



Full wwPDB X-ray Structure Validation Report ⓘ

Mar 9, 2018 – 08:28 am GMT

PDB ID : 3NT5
Title : Crystal structure of myo-inositol dehydrogenase from *Bacillus subtilis* with bound cofactor and product inosose
Authors : Van Straaten, K.E.; Palmer, D.R.J.; Sanders, D.A.R.
Deposited on : 2010-07-02
Resolution : 2.90 Å(reported)

This is a Full wwPDB X-ray Structure Validation Report for a publicly released PDB entry.

We welcome your comments at validation@mail.wwpdb.org

A user guide is available at

<https://www.wwpdb.org/validation/2017/XrayValidationReportHelp>

with specific help available everywhere you see the ⓘ symbol.

The following versions of software and data (see [references ⓘ](#)) were used in the production of this report:

MolProbity : 4.02b-467
Mogul : 1.7.3 (157068), CSD as539be (2018)
Xtriage (Phenix) : 1.13
EDS : trunk30967
Percentile statistics : 20171227.v01 (using entries in the PDB archive December 27th 2017)
Refmac : 5.8.0158
CCP4 : 7.0 (Gargrove)
Ideal geometry (proteins) : Engh & Huber (2001)
Ideal geometry (DNA, RNA) : Parkinson et al. (1996)
Validation Pipeline (wwPDB-VP) : trunk30967

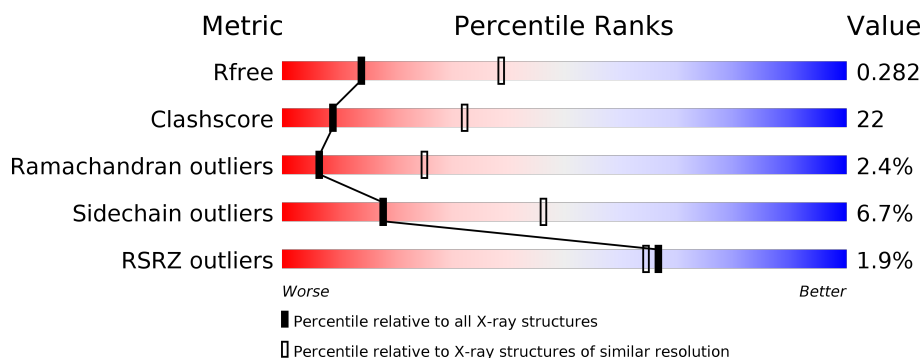
1 Overall quality at a glance

The following experimental techniques were used to determine the structure:

X-RAY DIFFRACTION

The reported resolution of this entry is 2.90 Å.

Percentile scores (ranging between 0-100) for global validation metrics of the entry are shown in the following graphic. The table shows the number of entries on which the scores are based.



Metric	Whole archive (#Entries)	Similar resolution (#Entries, resolution range(Å))
R_{free}	111664	1716 (2.90-2.90)
Clashscore	122126	1924 (2.90-2.90)
Ramachandran outliers	120053	1884 (2.90-2.90)
Sidechain outliers	120020	1886 (2.90-2.90)
RSRZ outliers	108989	1669 (2.90-2.90)

The table below summarises the geometric issues observed across the polymeric chains and their fit to the electron density. The red, orange, yellow and green segments on the lower bar indicate the fraction of residues that contain outliers for ≥ 3 , 2, 1 and 0 types of geometric quality criteria. A grey segment represents the fraction of residues that are not modelled. The numeric value for each fraction is indicated below the corresponding segment, with a dot representing fractions $\leq 5\%$. The upper red bar (where present) indicates the fraction of residues that have poor fit to the electron density. The numeric value is given above the bar.

Mol	Chain	Length	Quality of chain
1	A	344	<div> <div>%</div> <div> <div></div> <div>54%</div> <div>39%</div> <div>5%</div> </div> </div>
1	B	344	<div> <div>3%</div> <div> <div></div> <div>57%</div> <div>37%</div> <div></div> </div> </div>

The following table lists non-polymeric compounds, carbohydrate monomers and non-standard residues in protein, DNA, RNA chains that are outliers for geometric or electron-density-fit criteria:

Mol	Type	Chain	Res	Chirality	Geometry	Clashes	Electron density
4	NAI	B	400	X	-	-	-

2 Entry composition [i](#)

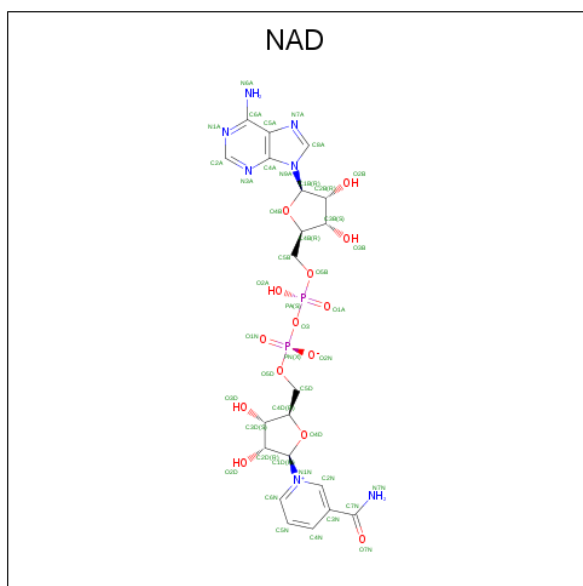
There are 4 unique types of molecules in this entry. The entry contains 5392 atoms, of which 0 are hydrogens and 0 are deuteriums.

In the tables below, the ZeroOcc column contains the number of atoms modelled with zero occupancy, the AltConf column contains the number of residues with at least one atom in alternate conformation and the Trace column contains the number of residues modelled with at most 2 atoms.

- Molecule 1 is a protein called Inositol 2-dehydrogenase/D-chiro-inositol 3-dehydrogenase.

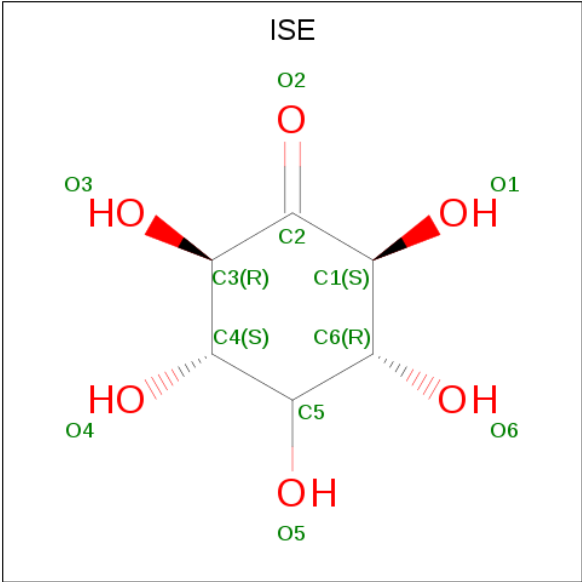
Mol	Chain	Residues	Atoms					ZeroOcc	AltConf	Trace
1	A	337	Total	C	N	O	S	0	0	0
			2640	1670	444	514	12			
1	B	337	Total	C	N	O	S	0	0	0
			2640	1670	444	514	12			

- Molecule 2 is NICOTINAMIDE-ADENINE-DINUCLEOTIDE (three-letter code: NAD) (formula: $C_{21}H_{27}N_7O_{14}P_2$).



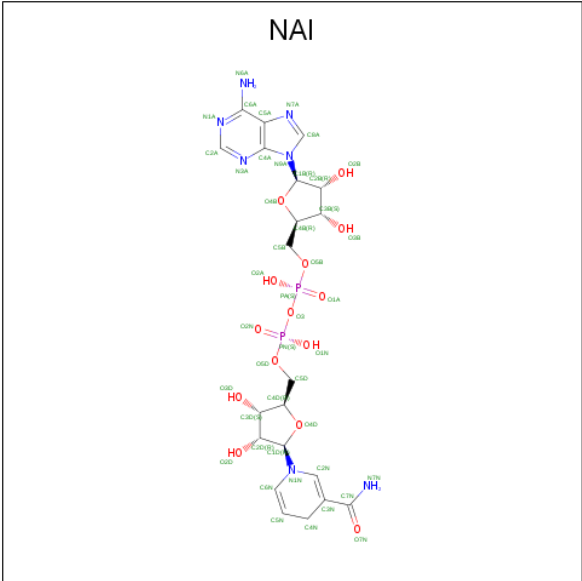
Mol	Chain	Residues	Atoms					ZeroOcc	AltConf
2	A	1	Total	C	N	O	P	0	0
			44	21	7	14	2		

- Molecule 3 is (2R,3S,4s,5R,6S)-2,3,4,5,6-pentahydroxycyclohexanone (three-letter code: ISE) (formula: $C_6H_{10}O_6$).



Mol	Chain	Residues	Atoms			ZeroOcc	AltConf
3	A	1	Total	C	O	0	0
			12	6	6		
3	B	1	Total	C	O	0	0
			12	6	6		

- Molecule 4 is 1,4-DIHYDRONICOTINAMIDE ADENINE DINUCLEOTIDE (three-letter code: NAI) (formula: C₂₁H₂₉N₇O₁₄P₂).

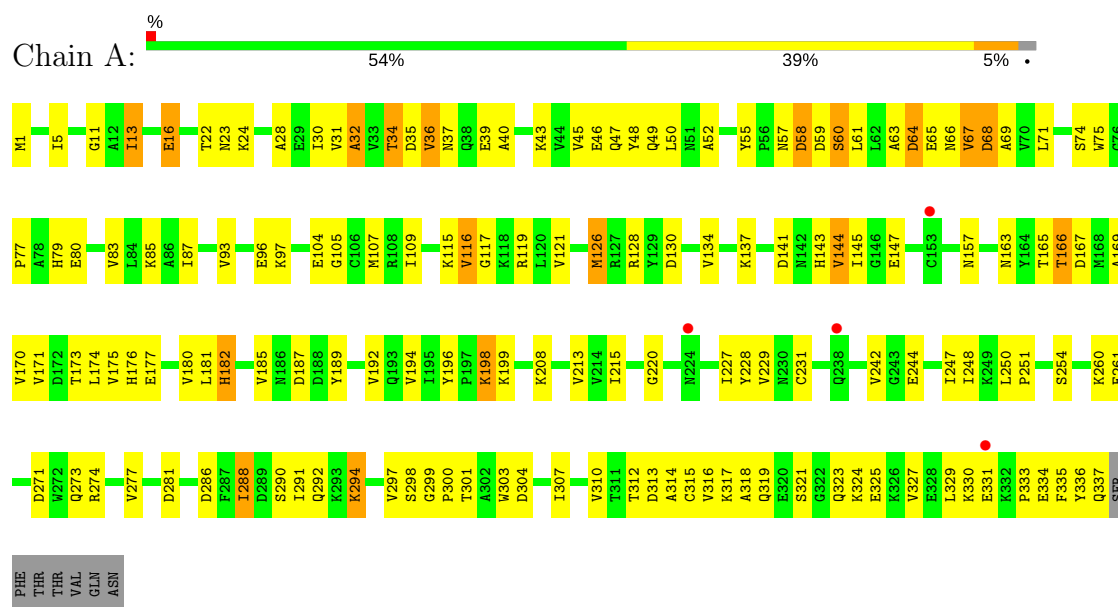


Mol	Chain	Residues	Atoms					ZeroOcc	AltConf
4	B	1	Total	C	N	O	P	0	0
			44	21	7	14	2		

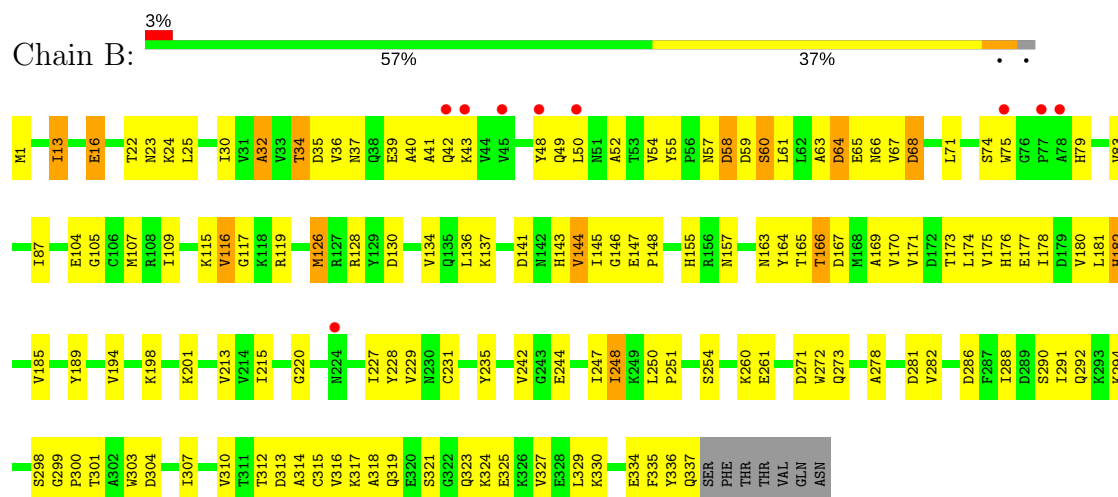
3 Residue-property plots

These plots are drawn for all protein, RNA and DNA chains in the entry. The first graphic for a chain summarises the proportions of the various outlier classes displayed in the second graphic. The second graphic shows the sequence view annotated by issues in geometry and electron density. Residues are color-coded according to the number of geometric quality criteria for which they contain at least one outlier: green = 0, yellow = 1, orange = 2 and red = 3 or more. A red dot above a residue indicates a poor fit to the electron density ($RSRZ > 2$). Stretches of 2 or more consecutive residues without any outlier are shown as a green connector. Residues present in the sample, but not in the model, are shown in grey.

- Molecule 1: Inositol 2-dehydrogenase/D-chiro-inositol 3-dehydrogenase



- Molecule 1: Inositol 2-dehydrogenase/D-chiro-inositol 3-dehydrogenase



4 Data and refinement statistics

Property	Value	Source
Space group	I 21 3	Depositor
Cell constants a, b, c, α , β , γ	183.50Å 183.50Å 183.50Å 90.00° 90.00° 90.00°	Depositor
Resolution (Å)	39.12 – 2.90 39.12 – 2.80	Depositor EDS
% Data completeness (in resolution range)	99.9 (39.12-2.90) 100.0 (39.12-2.80)	Depositor EDS
R_{merge}	0.13	Depositor
R_{sym}	(Not available)	Depositor
$\langle I/\sigma(I) \rangle$ ¹	1.69 (at 2.81Å)	Xtriage
Refinement program	PHENIX 1.5_2	Depositor
R, R_{free}	0.241 , 0.291 0.236 , 0.282	Depositor DCC
R_{free} test set	1308 reflections (5.15%)	wwPDB-VP
Wilson B-factor (Å ²)	99.8	Xtriage
Anisotropy	0.000	Xtriage
Bulk solvent k_{sol} (e/Å ³), B_{sol} (Å ²)	0.31 , 76.2	EDS
L-test for twinning ²	$\langle L \rangle = 0.53$, $\langle L^2 \rangle = 0.37$	Xtriage
Estimated twinning fraction	0.000 for -l,-k,-h	Xtriage
F_o, F_c correlation	0.95	EDS
Total number of atoms	5392	wwPDB-VP
Average B, all atoms (Å ²)	111.0	wwPDB-VP

Xtriage's analysis on translational NCS is as follows: *The largest off-origin peak in the Patterson function is 15.32% of the height of the origin peak. No significant pseudotranslation is detected.*

¹Intensities estimated from amplitudes.

²Theoretical values of $\langle |L| \rangle$, $\langle L^2 \rangle$ for acentric reflections are 0.5, 0.333 respectively for untwinned datasets, and 0.375, 0.2 for perfectly twinned datasets.

5 Model quality

5.1 Standard geometry

Bond lengths and bond angles in the following residue types are not validated in this section: NAI, NAD, ISE

The Z score for a bond length (or angle) is the number of standard deviations the observed value is removed from the expected value. A bond length (or angle) with $|Z| > 5$ is considered an outlier worth inspection. RMSZ is the root-mean-square of all Z scores of the bond lengths (or angles).

Mol	Chain	Bond lengths		Bond angles	
		RMSZ	$\# Z > 5$	RMSZ	$\# Z > 5$
1	A	0.55	0/2687	0.64	0/3644
1	B	0.49	0/2687	0.64	0/3644
All	All	0.52	0/5374	0.64	0/7288

There are no bond length outliers.

There are no bond angle outliers.

There are no chirality outliers.

There are no planarity outliers.

5.2 Too-close contacts

In the following table, the Non-H and H(model) columns list the number of non-hydrogen atoms and hydrogen atoms in the chain respectively. The H(added) column lists the number of hydrogen atoms added and optimized by MolProbity. The Clashes column lists the number of clashes within the asymmetric unit, whereas Symm-Clashes lists symmetry related clashes.

Mol	Chain	Non-H	H(model)	H(added)	Clashes	Symm-Clashes
1	A	2640	0	2635	117	0
1	B	2640	0	2635	115	0
2	A	44	0	26	7	0
3	A	12	0	10	2	0
3	B	12	0	10	5	0
4	B	44	0	27	16	0
All	All	5392	0	5343	231	0

The all-atom clashscore is defined as the number of clashes found per 1000 atoms (including hydrogen atoms). The all-atom clashscore for this structure is 22.

All (231) close contacts within the same asymmetric unit are listed below, sorted by their clash

magnitude.

Atom-1	Atom-2	Interatomic distance (Å)	Clash overlap (Å)
1:B:174:LEU:HD13	1:B:227:ILE:HD11	1.50	0.93
1:B:74:SER:HB2	4:B:400:NAI:C8A	1.98	0.93
1:A:174:LEU:HD13	1:A:227:ILE:HD11	1.54	0.90
1:A:75:TRP:HB2	2:A:400:NAD:H8A	1.57	0.87
1:B:176:HIS:NE2	3:B:345:ISE:O2	2.12	0.81
1:B:74:SER:HB2	4:B:400:NAI:N9A	1.98	0.78
1:B:35:ASP:C	4:B:400:NAI:H2A	2.06	0.76
1:B:147:GLU:HB2	1:B:244:GLU:CD	2.11	0.71
4:B:400:NAI:H4N	3:B:345:ISE:H1	1.72	0.71
1:B:310:VAL:HG11	1:B:329:LEU:HD23	1.72	0.70
1:B:35:ASP:CA	4:B:400:NAI:H2A	2.21	0.70
1:B:34:THR:HG22	1:B:61:LEU:HD13	1.75	0.69
1:B:167:ASP:O	1:B:171:VAL:HG23	1.95	0.67
1:B:22:THR:HG22	1:B:23:ASN:OD1	1.95	0.66
1:A:176:HIS:CD2	3:A:345:ISE:HO3	2.14	0.66
1:B:119:ARG:HH22	1:B:301:THR:HA	1.61	0.66
1:B:119:ARG:NH2	1:B:301:THR:HA	2.12	0.65
1:A:147:GLU:HB2	1:A:244:GLU:CD	2.17	0.65
1:B:35:ASP:HA	4:B:400:NAI:H2A	1.76	0.65
1:B:176:HIS:CD2	3:B:345:ISE:O2	2.52	0.63
1:B:310:VAL:O	1:B:313:ASP:HB2	1.97	0.63
1:A:75:TRP:HB2	2:A:400:NAD:C8A	2.26	0.63
1:A:242:VAL:HG22	1:A:247:ILE:HD13	1.80	0.62
1:A:119:ARG:HH22	1:A:301:THR:HA	1.63	0.62
1:B:75:TRP:HB2	4:B:400:NAI:H1B	1.81	0.62
1:A:83:VAL:O	1:A:87:ILE:HG13	2.00	0.61
1:B:314:ALA:CB	1:B:327:VAL:HG22	2.31	0.61
1:B:75:TRP:N	4:B:400:NAI:H52A	2.15	0.61
1:A:310:VAL:O	1:A:313:ASP:HB2	2.00	0.61
1:A:35:ASP:OD1	2:A:400:NAD:H1B	2.01	0.61
1:B:242:VAL:HG22	1:B:247:ILE:HD13	1.83	0.60
1:B:35:ASP:HB2	1:B:41:ALA:HB2	1.83	0.60
1:A:314:ALA:CB	1:A:327:VAL:HG22	2.32	0.60
1:A:22:THR:HG22	1:A:23:ASN:OD1	2.02	0.60
1:A:119:ARG:HG2	1:A:297:VAL:CG2	2.32	0.60
1:A:310:VAL:HG11	1:A:329:LEU:HD23	1.83	0.59
1:A:58:ASP:N	1:A:58:ASP:OD1	2.35	0.59
1:B:75:TRP:HB3	4:B:400:NAI:H8A	1.84	0.59
1:A:68:ASP:OD2	1:A:68:ASP:N	2.35	0.59
1:B:181:LEU:O	1:B:185:VAL:HG22	2.02	0.59
1:A:32:ALA:N	1:A:52:ALA:HB1	2.18	0.59

Continued on next page...

Continued from previous page...

Atom-1	Atom-2	Interatomic distance (Å)	Clash overlap (Å)
1:B:32:ALA:N	1:B:52:ALA:HB1	2.18	0.59
1:B:303:TRP:O	1:B:307:ILE:HG13	2.03	0.58
1:B:166:THR:HG22	1:B:166:THR:O	2.02	0.58
1:A:176:HIS:CD2	3:A:345:ISE:O3	2.55	0.58
1:B:75:TRP:CB	4:B:400:NAI:H8A	2.34	0.58
1:B:126:MET:SD	1:B:126:MET:N	2.75	0.57
1:A:167:ASP:O	1:A:171:VAL:HG23	2.04	0.57
1:B:157:ASN:HB2	1:B:229:VAL:HA	1.86	0.57
1:B:68:ASP:N	1:B:68:ASP:OD2	2.38	0.57
1:A:181:LEU:O	1:A:185:VAL:HG22	2.04	0.57
1:B:177:GLU:HA	1:B:180:VAL:HG12	1.85	0.57
1:A:130:ASP:O	1:A:134:VAL:HG23	2.05	0.56
1:B:115:LYS:O	1:B:117:GLY:N	2.38	0.56
1:A:119:ARG:NH2	1:A:301:THR:HA	2.20	0.56
1:A:194:VAL:HG22	1:A:213:VAL:HG22	1.88	0.56
1:A:64:ASP:OD1	1:A:65:GLU:N	2.38	0.56
1:B:194:VAL:HG22	1:B:213:VAL:HG22	1.86	0.56
1:A:182:HIS:HB3	1:A:189:TYR:CZ	2.41	0.56
1:A:34:THR:HG22	1:A:61:LEU:HD13	1.87	0.56
1:A:55:TYR:OH	1:A:64:ASP:OD2	2.23	0.56
1:A:60:SER:O	1:A:63:ALA:HB3	2.05	0.56
1:B:58:ASP:OD1	1:B:58:ASP:N	2.36	0.55
1:A:119:ARG:HG2	1:A:297:VAL:HG22	1.86	0.55
1:A:166:THR:O	1:A:166:THR:HG22	2.06	0.55
1:A:303:TRP:O	1:A:307:ILE:HG13	2.06	0.55
1:B:312:THR:O	1:B:316:VAL:HG23	2.05	0.55
1:A:11:GLY:HA3	2:A:400:NAD:H4B	1.87	0.55
1:A:145:ILE:HG21	1:A:248:ILE:HG23	1.87	0.55
4:B:400:NAI:C4N	3:B:345:ISE:H1	2.37	0.55
1:B:145:ILE:O	1:B:145:ILE:HG13	2.06	0.55
1:B:174:LEU:HD13	1:B:227:ILE:CD1	2.33	0.54
1:B:64:ASP:OD1	1:B:65:GLU:N	2.40	0.54
1:A:318:ALA:N	1:A:325:GLU:HG3	2.22	0.54
1:B:130:ASP:O	1:B:134:VAL:HG23	2.07	0.54
1:B:174:LEU:HB2	1:B:227:ILE:CD1	2.38	0.54
1:B:145:ILE:HG21	1:B:248:ILE:HG23	1.88	0.53
1:B:83:VAL:O	1:B:87:ILE:HG13	2.08	0.53
1:B:336:TYR:O	1:B:337:GLN:CB	2.57	0.53
1:B:60:SER:O	1:B:63:ALA:HB3	2.08	0.53
1:B:182:HIS:HB3	1:B:189:TYR:CZ	2.44	0.53
1:B:174:LEU:HG	1:B:174:LEU:O	2.08	0.53

Continued on next page...

Continued from previous page...

Atom-1	Atom-2	Interatomic distance (Å)	Clash overlap (Å)
1:A:312:THR:O	1:A:316:VAL:HG23	2.09	0.53
1:B:321:SER:OG	1:B:323:GLN:HB3	2.08	0.53
1:A:174:LEU:HB2	1:A:227:ILE:CD1	2.39	0.52
1:B:55:TYR:OH	1:B:64:ASP:OD2	2.24	0.52
1:A:115:LYS:O	1:A:117:GLY:N	2.42	0.52
1:B:48:TYR:O	1:B:50:LEU:HD23	2.10	0.52
1:B:318:ALA:HB2	1:B:325:GLU:HG2	1.90	0.52
1:B:318:ALA:N	1:B:325:GLU:HG3	2.25	0.52
1:A:16:GLU:HA	1:A:16:GLU:OE2	2.10	0.52
1:A:318:ALA:HB2	1:A:325:GLU:HG2	1.91	0.52
1:B:37:ASN:ND2	1:B:40:ALA:HB2	2.25	0.52
1:A:177:GLU:HA	1:A:180:VAL:HG12	1.90	0.52
1:B:74:SER:CB	4:B:400:NAI:C8A	2.83	0.51
1:A:157:ASN:HB2	1:A:229:VAL:HA	1.92	0.51
1:A:220:GLY:HA3	1:B:198:LYS:HB2	1.93	0.51
1:A:75:TRP:CE3	1:A:77:PRO:HD2	2.45	0.51
1:B:137:LYS:HE3	1:B:141:ASP:OD2	2.11	0.51
1:B:24:LYS:HE2	1:B:281:ASP:OD2	2.12	0.50
1:A:58:ASP:OD2	1:A:85:LYS:HD2	2.11	0.50
1:A:321:SER:OG	1:A:323:GLN:HB3	2.12	0.50
1:A:74:SER:O	1:A:79:HIS:NE2	2.41	0.50
1:A:174:LEU:HB2	1:A:227:ILE:HD11	1.94	0.50
1:A:30:ILE:HB	1:A:50:LEU:HD13	1.94	0.50
1:A:75:TRP:CD2	1:A:77:PRO:HD2	2.46	0.50
1:B:22:THR:HG22	1:B:23:ASN:CG	2.32	0.50
1:B:115:LYS:C	1:B:117:GLY:H	2.15	0.49
1:B:336:TYR:O	1:B:337:GLN:HG2	2.12	0.49
1:A:24:LYS:HE2	1:A:281:ASP:OD2	2.13	0.49
1:B:166:THR:O	1:B:166:THR:CG2	2.60	0.49
1:A:334:GLU:O	1:A:335:PHE:C	2.50	0.49
1:A:260:LYS:HG2	1:A:261:GLU:HG3	1.94	0.49
1:B:16:GLU:OE2	1:B:16:GLU:HA	2.11	0.49
1:A:126:MET:SD	1:A:126:MET:N	2.85	0.48
1:B:260:LYS:HG2	1:B:261:GLU:HG3	1.95	0.48
1:B:291:ILE:HG22	1:B:292:GLN:N	2.28	0.48
1:B:174:LEU:HB2	1:B:227:ILE:HD11	1.95	0.48
1:A:57:ASN:OD1	1:A:59:ASP:HB2	2.13	0.48
1:B:165:THR:O	1:B:167:ASP:N	2.46	0.48
1:A:48:TYR:O	1:A:50:LEU:HD23	2.14	0.48
1:B:39:GLU:HG2	1:B:43:LYS:HZ2	1.78	0.48
1:B:334:GLU:O	1:B:335:PHE:C	2.49	0.48

Continued on next page...

Continued from previous page...

Atom-1	Atom-2	Interatomic distance (Å)	Clash overlap (Å)
1:A:37:ASN:ND2	1:A:40:ALA:HB2	2.29	0.47
1:B:336:TYR:O	1:B:337:GLN:HB3	2.13	0.47
1:A:336:TYR:O	1:A:337:GLN:CB	2.62	0.47
1:A:119:ARG:HH12	1:A:301:THR:HA	1.79	0.47
1:A:174:LEU:HD13	1:A:227:ILE:CD1	2.35	0.47
1:A:74:SER:HB2	2:A:400:NAD:C4A	2.45	0.47
1:B:35:ASP:OD1	4:B:400:NAI:O2B	2.29	0.47
1:B:278:ALA:O	1:B:282:VAL:HG23	2.15	0.47
1:A:115:LYS:C	1:A:117:GLY:H	2.18	0.47
1:A:336:TYR:O	1:A:337:GLN:HG2	2.14	0.47
1:A:303:TRP:CD1	1:A:307:ILE:HD11	2.50	0.47
1:A:304:ASP:HA	1:A:307:ILE:HD12	1.97	0.47
1:B:290:SER:O	1:B:294:LYS:HB2	2.15	0.47
1:A:174:LEU:HG	1:A:174:LEU:O	2.15	0.46
1:A:291:ILE:HG22	1:A:292:GLN:N	2.30	0.46
1:A:97:LYS:O	2:A:400:NAD:H1D	2.14	0.46
1:B:104:GLU:HG2	1:B:105:GLY:N	2.31	0.46
1:A:104:GLU:HG2	1:A:105:GLY:N	2.31	0.46
1:A:290:SER:O	1:A:294:LYS:HB2	2.16	0.46
1:B:116:VAL:O	1:B:116:VAL:HG12	2.16	0.46
1:A:116:VAL:O	1:A:116:VAL:HG12	2.15	0.46
1:A:128:ARG:HD2	1:A:300:PRO:HG3	1.98	0.46
1:A:22:THR:HG22	1:A:23:ASN:CG	2.36	0.46
1:A:145:ILE:O	1:A:145:ILE:HG13	2.15	0.46
1:A:28:ALA:CB	1:A:288:ILE:HD13	2.46	0.46
1:B:155:HIS:ND1	1:B:177:GLU:OE2	2.46	0.46
1:A:166:THR:O	1:A:166:THR:CG2	2.63	0.46
1:A:169:ALA:O	1:A:173:THR:HB	2.16	0.46
1:B:105:GLY:O	1:B:109:ILE:HG13	2.16	0.46
1:B:166:THR:O	1:B:319:GLN:NE2	2.49	0.46
1:A:5:ILE:HA	1:A:69:ALA:O	2.16	0.46
1:A:228:TYR:CZ	1:A:231:CYS:HA	2.51	0.45
1:B:136:LEU:HD22	1:B:248:ILE:HG13	1.99	0.45
1:B:57:ASN:OD1	1:B:59:ASP:HB2	2.16	0.45
1:B:75:TRP:H	4:B:400:NAI:C1B	2.29	0.45
1:A:55:TYR:HB3	1:A:60:SER:HB2	1.97	0.45
1:B:35:ASP:CB	1:B:41:ALA:HB2	2.47	0.45
1:B:42:GLN:HG3	1:B:54:VAL:HG11	1.98	0.45
1:A:137:LYS:HE3	1:A:141:ASP:OD2	2.16	0.45
1:A:198:LYS:HB2	1:B:220:GLY:HA3	1.97	0.45
1:B:35:ASP:HA	4:B:400:NAI:C2A	2.46	0.45

Continued on next page...

Continued from previous page...

Atom-1	Atom-2	Interatomic distance (Å)	Clash overlap (Å)
1:B:228:TYR:CE2	1:B:231:CYS:HA	2.52	0.45
1:B:286:ASP:O	1:B:290:SER:CB	2.64	0.45
1:A:331:GLU:O	1:A:333:PRO:HD3	2.16	0.45
1:B:228:TYR:CZ	1:B:231:CYS:HA	2.52	0.45
1:A:119:ARG:HH11	1:A:119:ARG:HG3	1.82	0.44
1:A:119:ARG:NH1	1:A:301:THR:HA	2.32	0.44
1:B:213:VAL:HG12	1:B:215:ILE:HG13	1.99	0.44
1:B:30:ILE:HB	1:B:50:LEU:HD13	1.99	0.44
1:A:286:ASP:O	1:A:290:SER:CB	2.66	0.44
1:A:143:HIS:O	1:A:144:VAL:C	2.54	0.44
1:A:244:GLU:CD	1:B:201:LYS:HG2	2.38	0.44
1:B:317:LYS:HG2	1:B:325:GLU:OE2	2.17	0.44
1:B:271:ASP:OD2	1:B:273:GLN:HB2	2.17	0.44
1:A:166:THR:O	1:A:319:GLN:NE2	2.51	0.44
1:A:48:TYR:O	1:A:49:GLN:C	2.56	0.44
1:A:93:VAL:CG1	1:A:121:VAL:HG22	2.47	0.44
1:B:304:ASP:HA	1:B:307:ILE:HD12	1.99	0.44
1:B:74:SER:O	1:B:79:HIS:NE2	2.48	0.44
1:A:199:LYS:HD2	1:A:208:LYS:HA	1.99	0.44
1:A:35:ASP:CG	1:A:36:VAL:H	2.21	0.44
1:A:79:HIS:O	1:A:80:GLU:C	2.56	0.44
1:B:169:ALA:O	1:B:173:THR:HB	2.18	0.43
1:B:323:GLN:HG3	1:B:324:LYS:N	2.33	0.43
1:B:119:ARG:CZ	1:B:301:THR:HA	2.48	0.43
1:B:174:LEU:CD1	1:B:227:ILE:HD11	2.35	0.43
1:A:75:TRP:CZ3	1:A:77:PRO:HG2	2.53	0.43
1:B:143:HIS:O	1:B:144:VAL:C	2.56	0.43
1:A:39:GLU:OE2	1:A:43:LYS:HE3	2.19	0.43
1:B:146:GLY:O	1:B:148:PRO:HD3	2.18	0.43
1:A:228:TYR:CE2	1:A:231:CYS:HA	2.54	0.43
1:B:174:LEU:O	1:B:178:ILE:HG13	2.19	0.43
1:B:119:ARG:NH1	1:B:301:THR:HA	2.33	0.43
1:B:303:TRP:CD1	1:B:307:ILE:HD11	2.54	0.43
1:A:271:ASP:OD2	1:A:273:GLN:HB2	2.18	0.42
1:A:45:VAL:HG13	1:A:50:LEU:HB2	2.01	0.42
1:B:13:ILE:HD12	1:B:13:ILE:HA	1.67	0.42
1:B:176:HIS:CD2	3:B:345:ISE:O3	2.72	0.42
1:B:136:LEU:CD2	1:B:248:ILE:HG13	2.49	0.42
1:B:128:ARG:HD2	1:B:300:PRO:HG3	2.01	0.42
1:A:323:GLN:HG3	1:A:324:LYS:N	2.35	0.42
1:B:25:LEU:HD23	1:B:25:LEU:HA	1.72	0.42

Continued on next page...

Continued from previous page...

Atom-1	Atom-2	Interatomic distance (Å)	Clash overlap (Å)
1:A:105:GLY:O	1:A:109:ILE:HG13	2.20	0.41
1:A:13:ILE:HA	1:A:13:ILE:HD12	1.67	0.41
1:A:274:ARG:O	1:A:277:VAL:HG12	2.21	0.41
1:A:119:ARG:HG2	1:A:297:VAL:HG23	2.00	0.41
1:A:317:LYS:HG2	1:A:325:GLU:OE2	2.20	0.41
1:B:48:TYR:O	1:B:49:GLN:C	2.58	0.41
1:A:96:GLU:OE1	2:A:400:NAD:N7N	2.54	0.41
1:B:74:SER:HB2	4:B:400:NAI:C4A	2.50	0.41
1:A:182:HIS:HB2	1:A:187:ASP:O	2.21	0.41
1:A:170:VAL:HG11	1:A:315:CYS:HB3	2.03	0.41
1:B:250:LEU:HA	1:B:251:PRO:HD3	1.75	0.41
1:B:235:TYR:CE2	1:B:272:TRP:HB3	2.56	0.41
1:A:165:THR:O	1:A:167:ASP:N	2.54	0.41
1:A:336:TYR:O	1:A:337:GLN:HB3	2.20	0.41
1:A:181:LEU:HA	1:A:181:LEU:HD23	1.89	0.41
1:A:192:VAL:HG12	1:A:215:ILE:HG12	2.03	0.41
1:A:31:VAL:HG23	1:A:67:VAL:HG12	2.02	0.41
1:A:64:ASP:C	1:A:64:ASP:OD1	2.60	0.41
1:A:250:LEU:HA	1:A:251:PRO:HD3	1.74	0.40
1:A:30:ILE:O	1:A:52:ALA:HB2	2.22	0.40
1:B:164:TYR:OH	1:B:169:ALA:HA	2.21	0.40
1:B:170:VAL:HG11	1:B:315:CYS:HB3	2.03	0.40
1:B:55:TYR:CD1	1:B:60:SER:HB2	2.57	0.40
1:A:196:TYR:CE1	1:A:208:LYS:HD2	2.56	0.40
1:A:46:GLU:O	1:A:47:GLN:C	2.59	0.40
1:B:157:ASN:HB2	1:B:229:VAL:CA	2.49	0.40

There are no symmetry-related clashes.

5.3 Torsion angles

5.3.1 Protein backbone

In the following table, the Percentiles column shows the percent Ramachandran outliers of the chain as a percentile score with respect to all X-ray entries followed by that with respect to entries of similar resolution.

The Analysed column shows the number of residues for which the backbone conformation was analysed, and the total number of residues.

Mol	Chain	Analysed	Favoured	Allowed	Outliers	Percentiles	
1	A	335/344 (97%)	294 (88%)	32 (10%)	9 (3%)	5	22
1	B	335/344 (97%)	295 (88%)	33 (10%)	7 (2%)	8	29
All	All	670/688 (97%)	589 (88%)	65 (10%)	16 (2%)	6	25

All (16) Ramachandran outliers are listed below:

Mol	Chain	Res	Type
1	A	116	VAL
1	A	144	VAL
1	B	116	VAL
1	B	144	VAL
1	B	166	THR
1	B	299	GLY
1	A	64	ASP
1	A	166	THR
1	B	64	ASP
1	A	288	ILE
1	A	294	LYS
1	B	32	ALA
1	A	198	LYS
1	B	288	ILE
1	A	32	ALA
1	A	299	GLY

5.3.2 Protein sidechains ⓘ

In the following table, the Percentiles column shows the percent sidechain outliers of the chain as a percentile score with respect to all X-ray entries followed by that with respect to entries of similar resolution.

The Analysed column shows the number of residues for which the sidechain conformation was analysed, and the total number of residues.

Mol	Chain	Analysed	Rotameric	Outliers	Percentiles	
1	A	290/297 (98%)	271 (93%)	19 (7%)	18	47
1	B	290/297 (98%)	270 (93%)	20 (7%)	17	44
All	All	580/594 (98%)	541 (93%)	39 (7%)	18	46

All (39) residues with a non-rotameric sidechain are listed below:

Mol	Chain	Res	Type
1	A	1	MET
1	A	13	ILE
1	A	16	GLU
1	A	34	THR
1	A	36	VAL
1	A	58	ASP
1	A	60	SER
1	A	66	ASN
1	A	67	VAL
1	A	68	ASP
1	A	71	LEU
1	A	107	MET
1	A	126	MET
1	A	163	ASN
1	A	175	VAL
1	A	182	HIS
1	A	254	SER
1	A	298	SER
1	A	330	LYS
1	B	1	MET
1	B	13	ILE
1	B	16	GLU
1	B	34	THR
1	B	36	VAL
1	B	58	ASP
1	B	60	SER
1	B	66	ASN
1	B	67	VAL
1	B	68	ASP
1	B	71	LEU
1	B	107	MET
1	B	126	MET
1	B	163	ASN
1	B	175	VAL
1	B	182	HIS
1	B	248	ILE
1	B	254	SER
1	B	298	SER
1	B	330	LYS

Some sidechains can be flipped to improve hydrogen bonding and reduce clashes. There are no such sidechains identified.

5.3.3 RNA ⓘ

There are no RNA molecules in this entry.

5.4 Non-standard residues in protein, DNA, RNA chains ⓘ

There are no non-standard protein/DNA/RNA residues in this entry.

5.5 Carbohydrates ⓘ

There are no carbohydrates in this entry.

5.6 Ligand geometry ⓘ

4 ligands are modelled in this entry.

In the following table, the Counts columns list the number of bonds (or angles) for which Mogul statistics could be retrieved, the number of bonds (or angles) that are observed in the model and the number of bonds (or angles) that are defined in the Chemical Component Dictionary. The Link column lists molecule types, if any, to which the group is linked. The Z score for a bond length (or angle) is the number of standard deviations the observed value is removed from the expected value. A bond length (or angle) with $|Z| > 2$ is considered an outlier worth inspection. RMSZ is the root-mean-square of all Z scores of the bond lengths (or angles).

Mol	Type	Chain	Res	Link	Bond lengths			Bond angles		
					Counts	RMSZ	# $ Z > 2$	Counts	RMSZ	# $ Z > 2$
3	ISE	A	345	-	12,12,12	1.21	2 (16%)	16,18,18	1.65	5 (31%)
2	NAD	A	400	-	40,48,48	1.97	6 (15%)	44,73,73	1.92	2 (4%)
3	ISE	B	345	-	12,12,12	1.03	1 (8%)	16,18,18	1.16	1 (6%)
4	NAI	B	400	-	41,48,48	1.52	5 (12%)	45,73,73	1.67	10 (22%)

In the following table, the Chirals column lists the number of chiral outliers, the number of chiral centers analysed, the number of these observed in the model and the number defined in the Chemical Component Dictionary. Similar counts are reported in the Torsion and Rings columns. '-' means no outliers of that kind were identified.

Mol	Type	Chain	Res	Link	Chirals	Torsions	Rings
3	ISE	A	345	-	-	0/0/24/24	0/1/1/1
2	NAD	A	400	-	-	0/22/62/62	0/5/5/5
3	ISE	B	345	-	-	0/0/24/24	0/1/1/1
4	NAI	B	400	-	1/1/13/16	0/25/72/72	0/5/5/5

All (14) bond length outliers are listed below:

Mol	Chain	Res	Type	Atoms	Z	Observed(Å)	Ideal(Å)
4	B	400	NAI	C4N-C5N	-4.10	1.40	1.49
3	B	345	ISE	C6-C1	2.04	1.56	1.53
2	A	400	NAD	C2N-C3N	2.06	1.42	1.39
2	A	400	NAD	O4B-C1B	2.12	1.44	1.41
3	A	345	ISE	O1-C1	2.12	1.46	1.42
2	A	400	NAD	O4D-C1D	2.32	1.44	1.41
4	B	400	NAI	C2A-N3A	2.43	1.36	1.32
3	A	345	ISE	C6-C1	2.52	1.56	1.53
4	B	400	NAI	C2N-C3N	2.68	1.42	1.34
2	A	400	NAD	C2A-N1A	3.23	1.40	1.33
4	B	400	NAI	C5A-C4A	4.07	1.49	1.40
4	B	400	NAI	C6N-C5N	4.39	1.41	1.33
2	A	400	NAD	C2A-N3A	4.45	1.39	1.32
2	A	400	NAD	O7N-C7N	9.34	1.43	1.24

All (18) bond angle outliers are listed below:

Mol	Chain	Res	Type	Atoms	Z	Observed(°)	Ideal(°)
2	A	400	NAD	N3A-C2A-N1A	-10.39	119.97	128.86
4	B	400	NAI	N3A-C2A-N1A	-5.09	124.51	128.86
3	B	345	ISE	C6-C5-C4	-3.68	104.37	110.83
3	A	345	ISE	O3-C3-C4	-3.12	104.05	110.39
3	A	345	ISE	O6-C6-C5	-2.84	103.72	110.34
4	B	400	NAI	C3N-C2N-N1N	-2.65	119.27	123.09
2	A	400	NAD	C4B-O4B-C1B	-2.37	107.36	109.83
4	B	400	NAI	O4D-C1D-C2D	-2.30	101.58	106.62
4	B	400	NAI	C4A-C5A-N7A	-2.17	107.31	109.41
4	B	400	NAI	O7N-C7N-C3N	-2.11	116.93	120.90
3	A	345	ISE	O4-C4-C3	-2.09	105.78	109.56
3	A	345	ISE	O5-C5-C4	-2.02	105.64	110.34
3	A	345	ISE	O3-C3-C2	2.01	115.37	109.49
4	B	400	NAI	C2B-C3B-C4B	2.08	106.61	102.62
4	B	400	NAI	O2D-C2D-C1D	2.35	117.91	109.98
4	B	400	NAI	C2D-C1D-N1N	2.94	120.75	113.32
4	B	400	NAI	C3N-C7N-N7N	3.29	123.52	117.67
4	B	400	NAI	O4D-C1D-N1N	4.07	116.16	108.04

All (1) chirality outliers are listed below:

Mol	Chain	Res	Type	Atom
4	B	400	NAI	C1B

There are no torsion outliers.

There are no ring outliers.

4 monomers are involved in 28 short contacts:

Mol	Chain	Res	Type	Clashes	Symm-Clashes
3	A	345	ISE	2	0
2	A	400	NAD	7	0
3	B	345	ISE	5	0
4	B	400	NAI	16	0

5.7 Other polymers [i](#)

There are no such residues in this entry.

5.8 Polymer linkage issues [i](#)

There are no chain breaks in this entry.

6 Fit of model and data [i](#)

6.1 Protein, DNA and RNA chains [i](#)

In the following table, the column labelled ‘#RSRZ > 2’ contains the number (and percentage) of RSRZ outliers, followed by percent RSRZ outliers for the chain as percentile scores relative to all X-ray entries and entries of similar resolution. The OWAB column contains the minimum, median, 95th percentile and maximum values of the occupancy-weighted average B-factor per residue. The column labelled ‘Q < 0.9’ lists the number of (and percentage) of residues with an average occupancy less than 0.9.

Mol	Chain	Analysed	<RSRZ>	#RSRZ>2	OWAB(Å ²)	Q<0.9
1	A	337/344 (97%)	-0.11	4 (1%) 79 78	59, 98, 143, 195	0
1	B	337/344 (97%)	0.15	9 (2%) 54 50	73, 118, 164, 196	0
All	All	674/688 (97%)	0.02	13 (1%) 66 64	59, 108, 156, 196	0

All (13) RSRZ outliers are listed below:

Mol	Chain	Res	Type	RSRZ
1	B	42	GLN	4.2
1	B	78	ALA	2.8
1	A	224	ASN	2.8
1	B	224	ASN	2.8
1	A	153	CYS	2.7
1	B	45	VAL	2.7
1	A	331	GLU	2.7
1	B	75	TRP	2.2
1	B	77	PRO	2.2
1	B	43	LYS	2.1
1	A	238	GLN	2.1
1	B	50	LEU	2.1
1	B	48	TYR	2.0

6.2 Non-standard residues in protein, DNA, RNA chains [i](#)

There are no non-standard protein/DNA/RNA residues in this entry.

6.3 Carbohydrates [i](#)

There are no carbohydrates in this entry.

6.4 Ligands [i](#)

In the following table, the Atoms column lists the number of modelled atoms in the group and the number defined in the chemical component dictionary. The B-factors column lists the minimum, median, 95th percentile and maximum values of B factors of atoms in the group. The column labelled 'Q< 0.9' lists the number of atoms with occupancy less than 0.9.

Mol	Type	Chain	Res	Atoms	RSCC	RSR	B-factors(Å ²)	Q<0.9
3	ISE	B	345	12/12	0.79	0.21	115,115,115,115	0
3	ISE	A	345	12/12	0.80	0.28	115,115,115,115	0
2	NAD	A	400	44/44	0.84	0.51	115,115,115,115	0
4	NAI	B	400	44/44	0.84	0.25	115,115,115,115	0

6.5 Other polymers [i](#)

There are no such residues in this entry.