



Full wwPDB X-ray Structure Validation Report ⓘ

Mar 8, 2018 – 11:44 pm GMT

PDB ID : 2NXW
Title : Crystal structure of phenylpyruvate decarboxylase of *Azospirillum brasilense*
Authors : Versees, W.; Spaepen, S.; Vanderleyden, J.; Steyaert, J.
Deposited on : 2006-11-20
Resolution : 1.50 Å(reported)

This is a Full wwPDB X-ray Structure Validation Report for a publicly released PDB entry.

We welcome your comments at validation@mail.wwpdb.org

A user guide is available at

<https://www.wwpdb.org/validation/2017/XrayValidationReportHelp>

with specific help available everywhere you see the ⓘ symbol.

The following versions of software and data (see [references ⓘ](#)) were used in the production of this report:

MolProbity : 4.02b-467
Mogul : 1.7.3 (157068), CSD as539be (2018)
Xtriage (Phenix) : 1.13
EDS : trunk30967
Percentile statistics : 20171227.v01 (using entries in the PDB archive December 27th 2017)
Refmac : 5.8.0158
CCP4 : 7.0 (Gargrove)
Ideal geometry (proteins) : Engh & Huber (2001)
Ideal geometry (DNA, RNA) : Parkinson et al. (1996)
Validation Pipeline (wwPDB-VP) : trunk30967

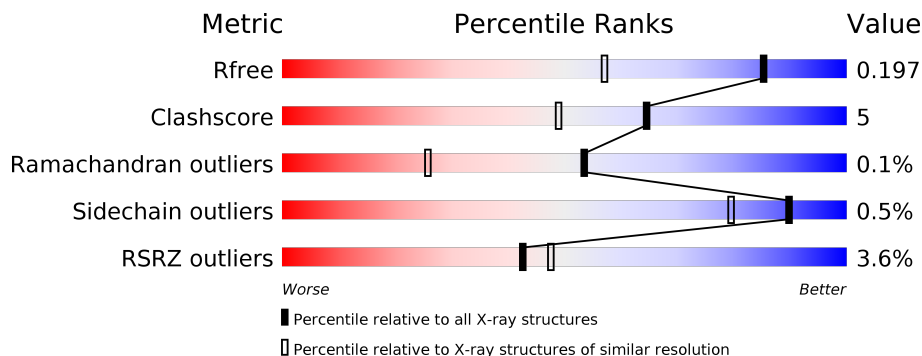
1 Overall quality at a glance

The following experimental techniques were used to determine the structure:

X-RAY DIFFRACTION

The reported resolution of this entry is 1.50 Å.

Percentile scores (ranging between 0-100) for global validation metrics of the entry are shown in the following graphic. The table shows the number of entries on which the scores are based.



Metric	Whole archive (#Entries)	Similar resolution (#Entries, resolution range(Å))
R_{free}	111664	2534 (1.50-1.50)
Clashscore	122126	2727 (1.50-1.50)
Ramachandran outliers	120053	2661 (1.50-1.50)
Sidechain outliers	120020	2659 (1.50-1.50)
RSRZ outliers	108989	2481 (1.50-1.50)

The table below summarises the geometric issues observed across the polymeric chains and their fit to the electron density. The red, orange, yellow and green segments on the lower bar indicate the fraction of residues that contain outliers for ≥ 3 , 2, 1 and 0 types of geometric quality criteria. A grey segment represents the fraction of residues that are not modelled. The numeric value for each fraction is indicated below the corresponding segment, with a dot representing fractions $\leq 5\%$. The upper red bar (where present) indicates the fraction of residues that have poor fit to the electron density. The numeric value is given above the bar.

Mol	Chain	Length	Quality of chain
1	A	565	<div> <div>4%</div> <div> <div></div> <div>87%</div> <div>7%</div> <div>5%</div> </div> </div>
1	B	565	<div> <div>3%</div> <div> <div></div> <div>85%</div> <div>8%</div> <div>6%</div> </div> </div>

2 Entry composition

There are 6 unique types of molecules in this entry. The entry contains 9305 atoms, of which 0 are hydrogens and 0 are deuteriums.

In the tables below, the ZeroOcc column contains the number of atoms modelled with zero occupancy, the AltConf column contains the number of residues with at least one atom in alternate conformation and the Trace column contains the number of residues modelled with at most 2 atoms.

- Molecule 1 is a protein called PHENYL-3-PYRUVATE DECARBOXYLASE.

Mol	Chain	Residues	Atoms					ZeroOcc	AltConf	Trace
1	A	537	Total	C	N	O	S	0	5	0
			3984	2526	695	738	25			
1	B	529	Total	C	N	O	S	0	2	0
			3910	2479	677	731	23			

There are 44 discrepancies between the modelled and reference sequences:

Chain	Residue	Modelled	Actual	Comment	Reference
A	-19	MET	-	CLONING ARTIFACT	UNP P51852
A	-18	GLY	-	CLONING ARTIFACT	UNP P51852
A	-17	SER	-	CLONING ARTIFACT	UNP P51852
A	-16	SER	-	CLONING ARTIFACT	UNP P51852
A	-15	HIS	-	EXPRESSION TAG	UNP P51852
A	-14	HIS	-	EXPRESSION TAG	UNP P51852
A	-13	HIS	-	EXPRESSION TAG	UNP P51852
A	-12	HIS	-	EXPRESSION TAG	UNP P51852
A	-11	HIS	-	EXPRESSION TAG	UNP P51852
A	-10	HIS	-	EXPRESSION TAG	UNP P51852
A	-9	SER	-	CLONING ARTIFACT	UNP P51852
A	-8	SER	-	CLONING ARTIFACT	UNP P51852
A	-7	GLY	-	CLONING ARTIFACT	UNP P51852
A	-6	LEU	-	CLONING ARTIFACT	UNP P51852
A	-5	VAL	-	CLONING ARTIFACT	UNP P51852
A	-4	PRO	-	CLONING ARTIFACT	UNP P51852
A	-3	ARG	-	CLONING ARTIFACT	UNP P51852
A	-2	GLY	-	CLONING ARTIFACT	UNP P51852
A	-1	SER	-	CLONING ARTIFACT	UNP P51852
A	0	HIS	-	CLONING ARTIFACT	UNP P51852
A	155	GLN	LEU	CLONING ARTIFACT	UNP P51852
A	327	ARG	GLY	SEE REMARK 999	UNP P51852
B	-19	MET	-	CLONING ARTIFACT	UNP P51852
B	-18	GLY	-	CLONING ARTIFACT	UNP P51852
B	-17	SER	-	CLONING ARTIFACT	UNP P51852

Continued on next page...

Continued from previous page...

Chain	Residue	Modelled	Actual	Comment	Reference
B	-16	SER	-	CLONING ARTIFACT	UNP P51852
B	-15	HIS	-	EXPRESSION TAG	UNP P51852
B	-14	HIS	-	EXPRESSION TAG	UNP P51852
B	-13	HIS	-	EXPRESSION TAG	UNP P51852
B	-12	HIS	-	EXPRESSION TAG	UNP P51852
B	-11	HIS	-	EXPRESSION TAG	UNP P51852
B	-10	HIS	-	EXPRESSION TAG	UNP P51852
B	-9	SER	-	CLONING ARTIFACT	UNP P51852
B	-8	SER	-	CLONING ARTIFACT	UNP P51852
B	-7	GLY	-	CLONING ARTIFACT	UNP P51852
B	-6	LEU	-	CLONING ARTIFACT	UNP P51852
B	-5	VAL	-	CLONING ARTIFACT	UNP P51852
B	-4	PRO	-	CLONING ARTIFACT	UNP P51852
B	-3	ARG	-	CLONING ARTIFACT	UNP P51852
B	-2	GLY	-	CLONING ARTIFACT	UNP P51852
B	-1	SER	-	CLONING ARTIFACT	UNP P51852
B	0	HIS	-	CLONING ARTIFACT	UNP P51852
B	155	GLN	LEU	CLONING ARTIFACT	UNP P51852
B	327	ARG	GLY	SEE REMARK 999	UNP P51852

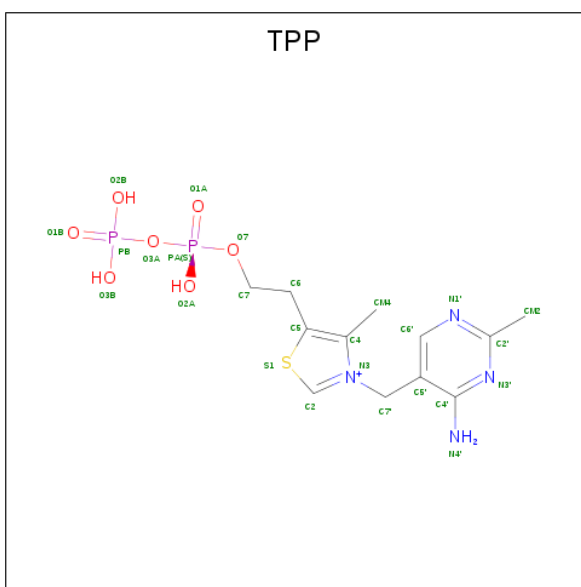
- Molecule 2 is MAGNESIUM ION (three-letter code: MG) (formula: Mg).

Mol	Chain	Residues	Atoms	ZeroOcc	AltConf
2	B	1	Total Mg 1 1	0	0
2	A	1	Total Mg 1 1	0	0

- Molecule 3 is CHLORIDE ION (three-letter code: CL) (formula: Cl).

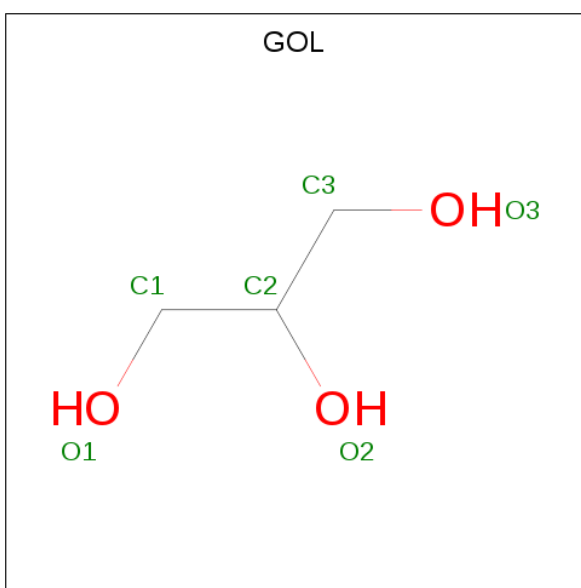
Mol	Chain	Residues	Atoms	ZeroOcc	AltConf
3	B	1	Total Cl 1 1	0	0
3	A	1	Total Cl 1 1	0	0

- Molecule 4 is THIAMINE DIPHOSPHATE (three-letter code: TPP) (formula: C₁₂H₁₉N₄O₇P₂S).



Mol	Chain	Residues	Atoms						ZeroOcc	AltConf
4	A	1	Total 26	C 12	N 4	O 7	P 2	S 1	0	0
4	B	1	Total 26	C 12	N 4	O 7	P 2	S 1	0	0

- Molecule 5 is GLYCEROL (three-letter code: GOL) (formula: $\text{C}_3\text{H}_8\text{O}_3$).



Mol	Chain	Residues	Atoms	ZeroOcc	AltConf
5	A	1	Total C O 6 3 3	0	0
5	B	1	Total C O 6 3 3	0	0

Continued on next page...

Continued from previous page...

Mol	Chain	Residues	Atoms			ZeroOcc	AltConf
5	B	1	Total	C	O	0	0
			6	3	3		

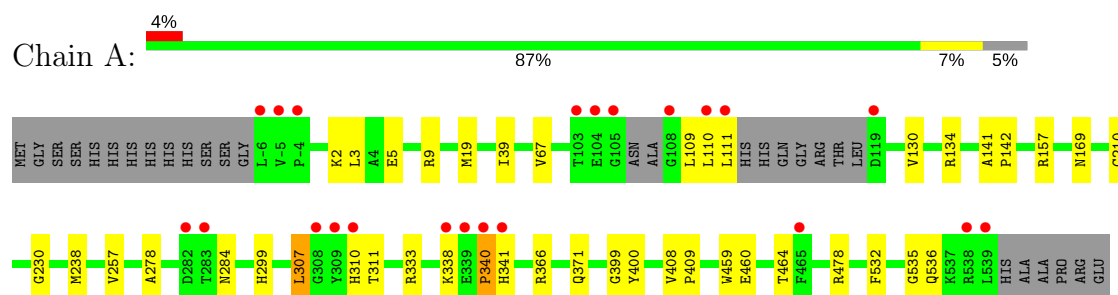
- Molecule 6 is water.

Mol	Chain	Residues	Atoms		ZeroOcc	AltConf
6	A	691	Total	O	0	0
			691	691		
6	B	646	Total	O	0	0
			646	646		

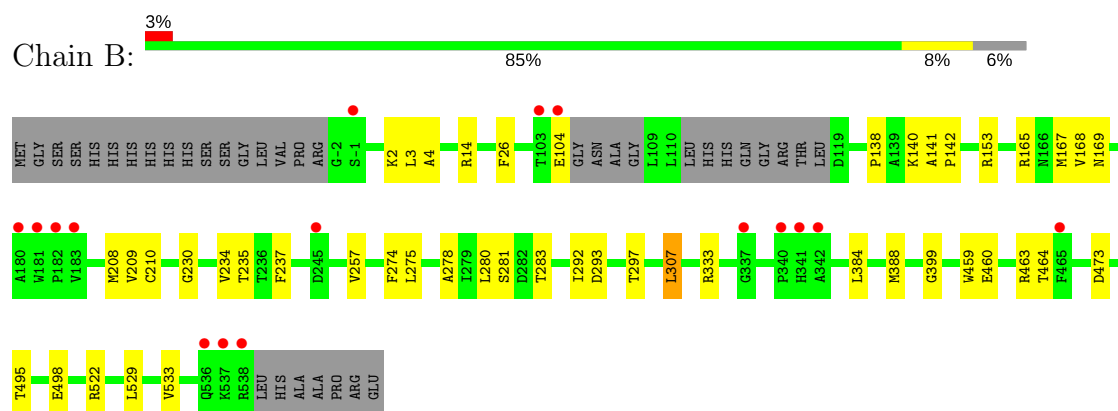
3 Residue-property plots [i](#)

These plots are drawn for all protein, RNA and DNA chains in the entry. The first graphic for a chain summarises the proportions of the various outlier classes displayed in the second graphic. The second graphic shows the sequence view annotated by issues in geometry and electron density. Residues are color-coded according to the number of geometric quality criteria for which they contain at least one outlier: green = 0, yellow = 1, orange = 2 and red = 3 or more. A red dot above a residue indicates a poor fit to the electron density ($RSRZ > 2$). Stretches of 2 or more consecutive residues without any outlier are shown as a green connector. Residues present in the sample, but not in the model, are shown in grey.

• Molecule 1: PHENYL-3-PYRUVATE DECARBOXYLASE



• Molecule 1: PHENYL-3-PYRUVATE DECARBOXYLASE



4 Data and refinement statistics

Property	Value	Source
Space group	C 2 2 21	Depositor
Cell constants a, b, c, α , β , γ	99.41Å 179.03Å 120.92Å 90.00° 90.00° 90.00°	Depositor
Resolution (Å)	50.00 – 1.50 31.66 – 1.50	Depositor EDS
% Data completeness (in resolution range)	99.4 (50.00-1.50) 99.5 (31.66-1.50)	Depositor EDS
R_{merge}	0.08	Depositor
R_{sym}	(Not available)	Depositor
$\langle I/\sigma(I) \rangle$ ¹	3.31 (at 1.50Å)	Xtriage
Refinement program	CNS 1.1	Depositor
R, R_{free}	0.175 , 0.196 0.176 , 0.197	Depositor DCC
R_{free} test set	8539 reflections (5.01%)	wwPDB-VP
Wilson B-factor (Å ²)	15.8	Xtriage
Anisotropy	0.334	Xtriage
Bulk solvent k_{sol} (e/Å ³), B_{sol} (Å ²)	0.34 , 55.2	EDS
L-test for twinning ²	$\langle L \rangle = 0.50$, $\langle L^2 \rangle = 0.34$	Xtriage
Estimated twinning fraction	0.008 for 1/2*h-1/2*k,-3/2*h-1/2*k,-l 0.014 for 1/2*h+1/2*k,3/2*h-1/2*k,-l	Xtriage
F_o, F_c correlation	0.97	EDS
Total number of atoms	9305	wwPDB-VP
Average B, all atoms (Å ²)	21.0	wwPDB-VP

Xtriage's analysis on translational NCS is as follows: *The largest off-origin peak in the Patterson function is 3.28% of the height of the origin peak. No significant pseudotranslation is detected.*

¹Intensities estimated from amplitudes.

²Theoretical values of $\langle |L| \rangle$, $\langle L^2 \rangle$ for acentric reflections are 0.5, 0.333 respectively for untwinned datasets, and 0.375, 0.2 for perfectly twinned datasets.

5 Model quality [i](#)

5.1 Standard geometry [i](#)

Bond lengths and bond angles in the following residue types are not validated in this section: GOL, MG, CL, TPP

The Z score for a bond length (or angle) is the number of standard deviations the observed value is removed from the expected value. A bond length (or angle) with $|Z| > 5$ is considered an outlier worth inspection. RMSZ is the root-mean-square of all Z scores of the bond lengths (or angles).

Mol	Chain	Bond lengths		Bond angles	
		RMSZ	$\# Z > 5$	RMSZ	$\# Z > 5$
1	A	0.36	0/4080	0.63	1/5547 (0.0%)
1	B	0.36	0/3991	0.64	2/5426 (0.0%)
All	All	0.36	0/8071	0.64	3/10973 (0.0%)

There are no bond length outliers.

All (3) bond angle outliers are listed below:

Mol	Chain	Res	Type	Atoms	Z	Observed(°)	Ideal(°)
1	B	307	LEU	CA-CB-CG	6.01	129.13	115.30
1	A	459	TRP	N-CA-C	-5.36	96.53	111.00
1	B	459	TRP	N-CA-C	-5.26	96.81	111.00

There are no chirality outliers.

There are no planarity outliers.

5.2 Too-close contacts [i](#)

In the following table, the Non-H and H(model) columns list the number of non-hydrogen atoms and hydrogen atoms in the chain respectively. The H(added) column lists the number of hydrogen atoms added and optimized by MolProbity. The Clashes column lists the number of clashes within the asymmetric unit, whereas Symm-Clashes lists symmetry related clashes.

Mol	Chain	Non-H	H(model)	H(added)	Clashes	Symm-Clashes
1	A	3984	0	3964	32	0
1	B	3910	0	3887	40	0
2	A	1	0	0	0	0
2	B	1	0	0	0	0
3	A	1	0	0	0	0
3	B	1	0	0	0	0

Continued on next page...

Continued from previous page...

Mol	Chain	Non-H	H(model)	H(added)	Clashes	Symm-Clashes
4	A	26	0	16	0	0
4	B	26	0	16	0	0
5	A	6	0	8	0	0
5	B	12	0	16	0	0
6	A	691	0	0	5	1
6	B	646	0	0	4	1
All	All	9305	0	7907	72	2

The all-atom clashscore is defined as the number of clashes found per 1000 atoms (including hydrogen atoms). The all-atom clashscore for this structure is 5.

All (72) close contacts within the same asymmetric unit are listed below, sorted by their clash magnitude.

Atom-1	Atom-2	Interatomic distance (Å)	Clash overlap (Å)
1:A:110:LEU:HB2	6:A:4626:HOH:O	1.83	0.77
1:B:104:GLU:OE1	1:B:165:ARG:HD3	1.85	0.77
1:B:460:GLU:O	1:B:464[B]:THR:HG23	1.88	0.72
1:B:463:ARG:HH12	1:B:522:ARG:HG2	1.56	0.71
1:B:230:GLY:HA2	1:B:333:ARG:NH2	2.05	0.70
1:A:110:LEU:O	1:A:111:LEU:HB2	1.91	0.69
1:A:366:ARG:HE	1:A:371:GLN:HE21	1.42	0.68
1:A:230:GLY:HA2	1:A:333:ARG:CZ	2.26	0.66
1:B:293:ASP:O	1:B:297:THR:HG23	1.98	0.64
1:B:281:SER:OG	1:B:283:THR:HG22	1.98	0.64
1:B:460:GLU:OE1	1:B:463:ARG:NH1	2.31	0.63
1:A:109:LEU:HB2	6:A:4638:HOH:O	1.98	0.63
1:A:278:ALA:O	1:A:299:HIS:HE1	1.83	0.61
1:A:230:GLY:HA2	1:A:333:ARG:NE	2.15	0.60
1:B:2:LYS:HD3	1:B:169:ASN:HD22	1.66	0.59
1:A:340:PRO:HG2	1:A:341:HIS:H	1.67	0.59
1:B:210:CYS:SG	1:B:278:ALA:HB2	2.42	0.58
1:B:237:PHE:CE2	1:B:399:GLY:HA3	2.38	0.58
1:A:210:CYS:SG	1:A:278:ALA:HB2	2.43	0.58
1:A:130:VAL:HG11	1:A:157:ARG:HG3	1.85	0.57
1:A:310[A]:HIS:CD2	1:A:311:THR:H	2.23	0.56
1:B:464[A]:THR:HG21	1:B:533:VAL:HG21	1.87	0.56
1:B:529:LEU:O	1:B:533:VAL:HG23	2.06	0.55
1:A:2:LYS:HB2	1:A:5:GLU:HG3	1.88	0.55
1:A:366:ARG:HE	1:A:371:GLN:NE2	2.04	0.55
1:A:257:VAL:HG21	1:A:535:GLY:HA3	1.90	0.54
1:B:292:ILE:HD12	1:B:297:THR:HG21	1.89	0.53

Continued on next page...

Continued from previous page...

Atom-1	Atom-2	Interatomic distance (Å)	Clash overlap (Å)
1:B:463:ARG:NH1	1:B:522:ARG:HB3	2.25	0.52
1:B:138:PRO:HD3	1:B:167:MET:HE1	1.90	0.52
1:B:138:PRO:HG3	1:B:167:MET:HE3	1.90	0.52
1:A:536:GLN:HE21	1:A:536:GLN:HA	1.75	0.51
1:A:9:ARG:HG3	1:A:39:ILE:HD13	1.92	0.51
1:B:209:VAL:CG2	1:B:235:THR:HG22	2.42	0.49
1:B:2:LYS:CD	1:B:169:ASN:HD22	2.25	0.49
1:B:495:THR:OG1	1:B:498:GLU:HG3	2.13	0.49
1:A:141:ALA:HB3	1:A:142:PRO:HD3	1.95	0.48
1:A:110:LEU:O	1:A:111:LEU:CB	2.62	0.48
1:A:408:VAL:HB	1:A:409:PRO:HD3	1.95	0.48
1:B:26:PHE:HD1	1:B:165:ARG:HD2	1.79	0.48
1:A:238:MET:HG3	1:A:400:TYR:CE2	2.48	0.48
1:B:463:ARG:HH12	1:B:522:ARG:CG	2.26	0.47
1:A:307:LEU:HD12	1:A:307:LEU:N	2.28	0.47
1:B:464[B]:THR:HG22	6:B:4204:HOH:O	2.13	0.47
1:B:2:LYS:HD3	1:B:169:ASN:ND2	2.30	0.47
1:B:275:LEU:HD13	1:B:280:LEU:HD21	1.96	0.47
1:A:532:PHE:O	1:A:536:GLN:HG2	2.15	0.46
1:B:257:VAL:HG12	6:B:4404:HOH:O	2.15	0.46
1:A:284:ASN:HB3	1:A:399:GLY:O	2.16	0.46
1:A:536:GLN:NE2	1:A:536:GLN:HA	2.31	0.46
1:B:140:LYS:HE3	6:B:4646:HOH:O	2.16	0.45
1:B:230:GLY:HA2	1:B:333:ARG:CZ	2.46	0.45
1:B:463:ARG:NH2	1:B:473:ASP:OD1	2.50	0.45
1:A:338:LYS:HG3	6:A:4289:HOH:O	2.16	0.45
1:A:460:GLU:O	1:A:464:THR:HG23	2.17	0.44
1:A:310[A]:HIS:CD2	1:A:311:THR:N	2.84	0.44
1:B:283:THR:HG23	6:B:4588:HOH:O	2.17	0.44
1:B:138:PRO:CD	1:B:167:MET:HE1	2.48	0.43
1:B:209:VAL:HG23	1:B:235:THR:HG22	2.00	0.43
1:B:464[A]:THR:HG21	1:B:533:VAL:CG2	2.46	0.43
1:B:463:ARG:NH1	1:B:522:ARG:CG	2.82	0.43
1:A:338:LYS:N	6:A:4289:HOH:O	2.52	0.42
1:B:14:ARG:HG2	1:B:153:ARG:NH1	2.34	0.42
1:B:141:ALA:HB3	1:B:142:PRO:HD3	2.02	0.42
1:B:4:ALA:HB2	1:B:168:VAL:HG13	2.02	0.42
1:A:134:ARG:NE	6:A:4640:HOH:O	2.52	0.42
1:A:19:MET:HG3	1:A:67:VAL:HG12	2.02	0.42
1:B:384:LEU:O	1:B:388:MET:HG3	2.20	0.42
1:A:2:LYS:HD3	1:A:169:ASN:OD1	2.20	0.42

Continued on next page...

Continued from previous page...

Atom-1	Atom-2	Interatomic distance (Å)	Clash overlap (Å)
1:B:208:MET:HA	1:B:234:VAL:O	2.21	0.41
1:A:3:LEU:HD23	1:A:3:LEU:C	2.41	0.40
1:B:138:PRO:HG3	1:B:167:MET:CE	2.51	0.40

All (2) symmetry-related close contacts are listed below. The label for Atom-2 includes the symmetry operator and encoded unit-cell translations to be applied.

Atom-1	Atom-2	Interatomic distance (Å)	Clash overlap (Å)
6:B:4495:HOH:O	6:B:4495:HOH:O[3_555]	2.06	0.14
6:A:4669:HOH:O	6:A:4669:HOH:O[4_556]	2.07	0.13

5.3 Torsion angles [i](#)

5.3.1 Protein backbone [i](#)

In the following table, the Percentiles column shows the percent Ramachandran outliers of the chain as a percentile score with respect to all X-ray entries followed by that with respect to entries of similar resolution.

The Analysed column shows the number of residues for which the backbone conformation was analysed, and the total number of residues.

Mol	Chain	Analysed	Favoured	Allowed	Outliers	Percentiles
1	A	536/565 (95%)	526 (98%)	9 (2%)	1 (0%)	49 24
1	B	525/565 (93%)	518 (99%)	7 (1%)	0	100 100
All	All	1061/1130 (94%)	1044 (98%)	16 (2%)	1 (0%)	53 26

All (1) Ramachandran outliers are listed below:

Mol	Chain	Res	Type
1	A	340	PRO

5.3.2 Protein sidechains [i](#)

In the following table, the Percentiles column shows the percent sidechain outliers of the chain as a percentile score with respect to all X-ray entries followed by that with respect to entries of similar resolution.

The Analysed column shows the number of residues for which the sidechain conformation was

analysed, and the total number of residues.

Mol	Chain	Analysed	Rotameric	Outliers	Percentiles	
1	A	396/426 (93%)	394 (100%)	2 (0%)	90	79
1	B	387/426 (91%)	385 (100%)	2 (0%)	90	79
All	All	783/852 (92%)	779 (100%)	4 (0%)	90	79

All (4) residues with a non-rotameric sidechain are listed below:

Mol	Chain	Res	Type
1	A	307	LEU
1	A	478	ARG
1	B	274	PHE
1	B	307	LEU

Some sidechains can be flipped to improve hydrogen bonding and reduce clashes. All (11) such sidechains are listed below:

Mol	Chain	Res	Type
1	A	284	ASN
1	A	299	HIS
1	A	371	GLN
1	A	415	GLN
1	A	472	ASN
1	A	536	GLN
1	B	169	ASN
1	B	310	HIS
1	B	415	GLN
1	B	441	ASN
1	B	472	ASN

5.3.3 RNA ⓘ

There are no RNA molecules in this entry.

5.4 Non-standard residues in protein, DNA, RNA chains ⓘ

There are no non-standard protein/DNA/RNA residues in this entry.

5.5 Carbohydrates ⓘ

There are no carbohydrates in this entry.

5.6 Ligand geometry

Of 9 ligands modelled in this entry, 4 are monoatomic - leaving 5 for Mogul analysis.

In the following table, the Counts columns list the number of bonds (or angles) for which Mogul statistics could be retrieved, the number of bonds (or angles) that are observed in the model and the number of bonds (or angles) that are defined in the Chemical Component Dictionary. The Link column lists molecule types, if any, to which the group is linked. The Z score for a bond length (or angle) is the number of standard deviations the observed value is removed from the expected value. A bond length (or angle) with $|Z| > 2$ is considered an outlier worth inspection. RMSZ is the root-mean-square of all Z scores of the bond lengths (or angles).

Mol	Type	Chain	Res	Link	Bond lengths			Bond angles		
					Counts	RMSZ	# Z > 2	Counts	RMSZ	# Z > 2
4	TPP	A	2002	2	21,27,27	1.54	3 (14%)	26,40,40	2.02	9 (34%)
5	GOL	A	3002	-	5,5,5	0.64	0	5,5,5	0.94	0
4	TPP	B	2001	2	21,27,27	1.79	5 (23%)	26,40,40	2.08	8 (30%)
5	GOL	B	3001	-	5,5,5	0.59	0	5,5,5	0.83	0
5	GOL	B	3003	-	5,5,5	0.75	0	5,5,5	0.85	0

In the following table, the Chirals column lists the number of chiral outliers, the number of chiral centers analysed, the number of these observed in the model and the number defined in the Chemical Component Dictionary. Similar counts are reported in the Torsion and Rings columns. '-' means no outliers of that kind were identified.

Mol	Type	Chain	Res	Link	Chirals	Torsions	Rings
4	TPP	A	2002	2	-	0/16/17/17	0/2/2/2
5	GOL	A	3002	-	-	0/4/4/4	0/0/0/0
4	TPP	B	2001	2	-	0/16/17/17	0/2/2/2
5	GOL	B	3001	-	-	0/4/4/4	0/0/0/0
5	GOL	B	3003	-	-	0/4/4/4	0/0/0/0

All (8) bond length outliers are listed below:

Mol	Chain	Res	Type	Atoms	Z	Observed(Å)	Ideal(Å)
4	B	2001	TPP	C4-N3	-3.90	1.36	1.39
4	B	2001	TPP	CM4-C4	2.06	1.54	1.49
4	B	2001	TPP	C7'-N3	2.66	1.53	1.48
4	A	2002	TPP	C7'-N3	2.76	1.53	1.48
4	A	2002	TPP	CM4-C4	2.81	1.55	1.49
4	B	2001	TPP	C7'-C5'	2.93	1.57	1.51
4	A	2002	TPP	PB-O3A	3.89	1.66	1.60
4	B	2001	TPP	PB-O3A	4.20	1.66	1.60

All (17) bond angle outliers are listed below:

Mol	Chain	Res	Type	Atoms	Z	Observed(°)	Ideal(°)
4	B	2001	TPP	PA-O3A-PB	-4.07	118.96	132.63
4	A	2002	TPP	PA-O3A-PB	-3.44	121.08	132.63
4	B	2001	TPP	CM4-C4-C5	-3.19	120.63	127.60
4	A	2002	TPP	CM4-C4-C5	-3.02	120.99	127.60
4	A	2002	TPP	N1'-C2'-N3'	-2.68	120.83	125.55
4	B	2001	TPP	N1'-C2'-N3'	-2.63	120.92	125.55
4	A	2002	TPP	C5'-C6'-N1'	-2.19	120.13	123.83
4	B	2001	TPP	C5'-C6'-N1'	-2.11	120.27	123.83
4	A	2002	TPP	CM2-C2'-N1'	2.14	119.44	117.07
4	B	2001	TPP	C2'-N3'-C4'	2.14	121.76	118.14
4	A	2002	TPP	C2'-N3'-C4'	2.31	122.06	118.14
4	A	2002	TPP	C6'-N1'-C2'	2.84	120.90	115.95
4	B	2001	TPP	C6'-N1'-C2'	3.01	121.19	115.95
4	A	2002	TPP	C5-C4-N3	4.26	116.10	107.57
4	B	2001	TPP	C6-C5-C4	4.46	131.01	127.43
4	B	2001	TPP	C5-C4-N3	4.61	116.80	107.57
4	A	2002	TPP	C6-C5-C4	4.87	131.34	127.43

There are no chirality outliers.

There are no torsion outliers.

There are no ring outliers.

No monomer is involved in short contacts.

5.7 Other polymers [i](#)

There are no such residues in this entry.

5.8 Polymer linkage issues [i](#)

There are no chain breaks in this entry.

6 Fit of model and data

6.1 Protein, DNA and RNA chains

In the following table, the column labelled ‘#RSRZ > 2’ contains the number (and percentage) of RSRZ outliers, followed by percent RSRZ outliers for the chain as percentile scores relative to all X-ray entries and entries of similar resolution. The OWAB column contains the minimum, median, 95th percentile and maximum values of the occupancy-weighted average B-factor per residue. The column labelled ‘Q < 0.9’ lists the number of (and percentage) of residues with an average occupancy less than 0.9.

Mol	Chain	Analysed	<RSRZ>	#RSRZ>2	OWAB(Å ²)	Q<0.9
1	A	537/565 (95%)	-0.00	22 (4%) 37 41	10, 17, 31, 48	0
1	B	529/565 (93%)	-0.04	16 (3%) 50 56	10, 18, 30, 51	0
All	All	1066/1130 (94%)	-0.02	38 (3%) 42 47	10, 17, 31, 51	0

All (38) RSRZ outliers are listed below:

Mol	Chain	Res	Type	RSRZ
1	A	539	LEU	8.7
1	A	309	TYR	8.0
1	A	111	LEU	7.9
1	A	308	GLY	6.9
1	A	340	PRO	6.4
1	A	-5	VAL	5.6
1	B	183	VAL	5.6
1	A	108	GLY	5.5
1	B	181	TRP	5.2
1	B	182	PRO	5.0
1	A	105	GLY	4.3
1	B	538	ARG	3.9
1	B	537	LYS	3.6
1	B	180	ALA	3.6
1	A	110	LEU	3.3
1	A	538	ARG	3.1
1	A	103	THR	2.9
1	A	-6	LEU	2.8
1	B	465	PHE	2.8
1	A	310[A]	HIS	2.8
1	A	119	ASP	2.7
1	A	465	PHE	2.7
1	B	103	THR	2.6
1	B	337	GLY	2.5

Continued on next page...

Continued from previous page...

Mol	Chain	Res	Type	RSRZ
1	B	245	ASP	2.4
1	A	283	THR	2.4
1	B	104	GLU	2.3
1	A	338	LYS	2.2
1	A	-4	PRO	2.2
1	B	-1	SER	2.2
1	B	342	ALA	2.2
1	A	341	HIS	2.1
1	B	536	GLN	2.1
1	B	341	HIS	2.0
1	A	104	GLU	2.0
1	A	282	ASP	2.0
1	A	339	GLU	2.0
1	B	340	PRO	2.0

6.2 Non-standard residues in protein, DNA, RNA chains [i](#)

There are no non-standard protein/DNA/RNA residues in this entry.

6.3 Carbohydrates [i](#)

There are no carbohydrates in this entry.

6.4 Ligands [i](#)

In the following table, the Atoms column lists the number of modelled atoms in the group and the number defined in the chemical component dictionary. The B-factors column lists the minimum, median, 95th percentile and maximum values of B factors of atoms in the group. The column labelled 'Q<0.9' lists the number of atoms with occupancy less than 0.9.

Mol	Type	Chain	Res	Atoms	RSCC	RSR	B-factors(\AA^2)	Q<0.9
5	GOL	B	3003	6/6	0.81	0.20	36,37,38,38	0
5	GOL	A	3002	6/6	0.86	0.15	21,29,32,33	0
5	GOL	B	3001	6/6	0.87	0.12	19,28,29,33	0
4	TPP	B	2001	26/26	0.98	0.08	11,14,16,18	0
2	MG	B	4001	1/1	0.98	0.05	14,14,14,14	0
4	TPP	A	2002	26/26	0.98	0.07	9,11,14,15	0
3	CL	B	4004	1/1	0.99	0.03	15,15,15,15	0
2	MG	A	4002	1/1	0.99	0.05	10,10,10,10	0
3	CL	A	4003	1/1	1.00	0.03	15,15,15,15	0

6.5 Other polymers [i](#)

There are no such residues in this entry.