



Full wwPDB X-ray Structure Validation Report ⓘ

Feb 3, 2020 – 01:12 PM EST

PDB ID : 6NX1
Title : STRUCTURE OF HUMAN PREGNANE X RECEPTOR LIGAND BINDING DOMAIN BOUND TETHERED WITH SRC CO-ACTIVATOR PEPTIDE AND COMPOUND-3 AKA 1,1,1,3,3,3-HEXAFLUORO-2-{4-[1-(4-LUOROBENZENESULFONYL)CYCLOPENTYL]PHENYL}PROPAN-2-OL
Authors : Khan, J.A.
Deposited on : 2019-02-07
Resolution : 2.27 Å(reported)

This is a Full wwPDB X-ray Structure Validation Report for a publicly released PDB entry.

We welcome your comments at validation@mail.wwpdb.org

A user guide is available at

<https://www.wwpdb.org/validation/2017/XrayValidationReportHelp>

with specific help available everywhere you see the ⓘ symbol.

The following versions of software and data (see [references ⓘ](#)) were used in the production of this report:

MolProbity : 4.02b-467
Mogul : 1.8.0 (224370), CSD as540be (2019)
Xtriage (Phenix) : 1.13
EDS : 2.4
buster-report : 1.1.7 (2018)
Percentile statistics : 20171227.v01 (using entries in the PDB archive December 27th 2017)
Refmac : 5.8.0158
CCP4 : 7.0 (Gargrove)
Ideal geometry (proteins) : Engh & Huber (2001)
Ideal geometry (DNA, RNA) : Parkinson et al. (1996)
Validation Pipeline (wwPDB-VP) : 2.4

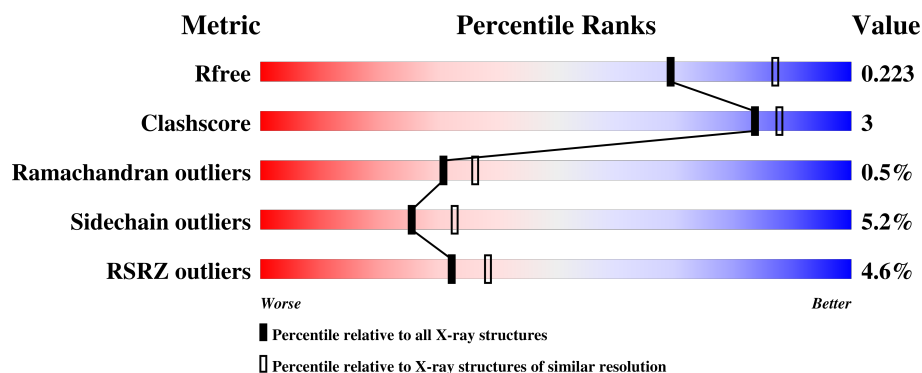
1 Overall quality at a glance

The following experimental techniques were used to determine the structure:

X-RAY DIFFRACTION

The reported resolution of this entry is 2.27 Å.

Percentile scores (ranging between 0-100) for global validation metrics of the entry are shown in the following graphic. The table shows the number of entries on which the scores are based.



Metric	Whole archive (#Entries)	Similar resolution (#Entries, resolution range(Å))
R_{free}	111664	6121 (2.30-2.26)
Clashscore	122126	6842 (2.30-2.26)
Ramachandran outliers	120053	6755 (2.30-2.26)
Sidechain outliers	120020	6755 (2.30-2.26)
RSRZ outliers	108989	5992 (2.30-2.26)

The table below summarises the geometric issues observed across the polymeric chains and their fit to the electron density. The red, orange, yellow and green segments on the lower bar indicate the fraction of residues that contain outliers for ≥ 3 , 2, 1 and 0 types of geometric quality criteria. A grey segment represents the fraction of residues that are not modelled. The numeric value for each fraction is indicated below the corresponding segment, with a dot representing fractions $\leq 5\%$. The upper red bar (where present) indicates the fraction of residues that have poor fit to the electron density. The numeric value is given above the bar.

Mol	Chain	Length	Quality of chain
1	A	351	<div> <div>3%</div> <div>73%</div> <div>9%</div> <div>18%</div> </div>
1	B	351	<div> <div>4%</div> <div>77%</div> <div>6%</div> <div>16%</div> </div>

2 Entry composition

There are 3 unique types of molecules in this entry. The entry contains 4686 atoms, of which 0 are hydrogens and 0 are deuteriums.

In the tables below, the ZeroOcc column contains the number of atoms modelled with zero occupancy, the AltConf column contains the number of residues with at least one atom in alternate conformation and the Trace column contains the number of residues modelled with at most 2 atoms.

- Molecule 1 is a protein called Nuclear receptor subfamily 1 group I member 2, Nuclear receptor coactivator 1 fusion.

Mol	Chain	Residues	Atoms					ZeroOcc	AltConf	Trace
1	A	288	Total	C	N	O	S	0	2	0
			2263	1464	380	399	20			
1	B	294	Total	C	N	O	S	0	1	0
			2275	1463	386	408	18			

There are 26 discrepancies between the modelled and reference sequences:

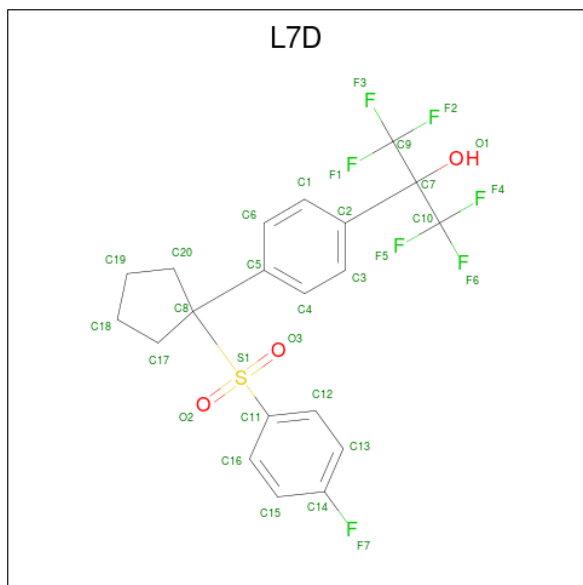
Chain	Residue	Modelled	Actual	Comment	Reference
A	123	HIS	-	expression tag	UNP O75469
A	124	HIS	-	expression tag	UNP O75469
A	125	HIS	-	expression tag	UNP O75469
A	126	HIS	-	expression tag	UNP O75469
A	127	HIS	-	expression tag	UNP O75469
A	128	HIS	-	expression tag	UNP O75469
A	129	GLY	-	expression tag	UNP O75469
A	432C	SER	-	linker	UNP O75469
A	432D	GLY	-	linker	UNP O75469
A	432E	GLY	-	linker	UNP O75469
A	432F	SER	-	linker	UNP O75469
A	432G	GLY	-	linker	UNP O75469
A	432H	GLY	-	linker	UNP O75469
B	123	HIS	-	expression tag	UNP O75469
B	124	HIS	-	expression tag	UNP O75469
B	125	HIS	-	expression tag	UNP O75469
B	126	HIS	-	expression tag	UNP O75469
B	127	HIS	-	expression tag	UNP O75469
B	128	HIS	-	expression tag	UNP O75469
B	129	GLY	-	expression tag	UNP O75469
B	432C	SER	-	linker	UNP O75469
B	432D	GLY	-	linker	UNP O75469
B	432E	GLY	-	linker	UNP O75469
B	432F	SER	-	linker	UNP O75469

Continued on next page...

Continued from previous page...

Chain	Residue	Modelled	Actual	Comment	Reference
B	432G	GLY	-	linker	UNP O75469
B	432H	GLY	-	linker	UNP O75469

- Molecule 2 is 1,1,1,3,3,3-hexafluoro-2-(4-{1-[(4-fluorophenyl)sulfonyl]cyclopentyl}phenyl)propan-2-ol (three-letter code: L7D) (formula: C₂₀H₁₇F₇O₃S).



Mol	Chain	Residues	Atoms					ZeroOcc	AltConf
2	A	1	Total	C	F	O	S	0	1
			62	40	14	6	2		
2	B	1	Total	C	F	O	S	0	0
			25	15	6	3	1		

- Molecule 3 is water.

Mol	Chain	Residues	Atoms		ZeroOcc	AltConf
3	A	32	Total	O	0	0
			32	32		
3	B	29	Total	O	0	0
			29	29		

4 Data and refinement statistics

Property	Value	Source
Space group	P 21 21 21	Depositor
Cell constants a, b, c, α , β , γ	84.19Å 89.61Å 106.16Å 90.00° 90.00° 90.00°	Depositor
Resolution (Å)	42.10 – 2.27 42.10 – 2.27	Depositor EDS
% Data completeness (in resolution range)	99.8 (42.10-2.27) 99.8 (42.10-2.27)	Depositor EDS
R_{merge}	0.05	Depositor
R_{sym}	0.02	Depositor
$\langle I/\sigma(I) \rangle$ ¹	3.23 (at 2.27Å)	Xtriage
Refinement program	BUSTER 2.11.2	Depositor
R, R_{free}	0.211 , 0.240 0.218 , 0.223	Depositor DCC
R_{free} test set	1842 reflections (4.87%)	wwPDB-VP
Wilson B-factor (Å ²)	53.2	Xtriage
Anisotropy	0.229	Xtriage
Bulk solvent k_{sol} (e/Å ³), B_{sol} (Å ²)	0.33 , 55.7	EDS
L-test for twinning ²	$\langle L \rangle = 0.48$, $\langle L^2 \rangle = 0.32$	Xtriage
Estimated twinning fraction	No twinning to report.	Xtriage
F_o, F_c correlation	0.95	EDS
Total number of atoms	4686	wwPDB-VP
Average B, all atoms (Å ²)	62.0	wwPDB-VP

Xtriage's analysis on translational NCS is as follows: *The largest off-origin peak in the Patterson function is 4.57% of the height of the origin peak. No significant pseudotranslation is detected.*

¹Intensities estimated from amplitudes.

²Theoretical values of $\langle |L| \rangle$, $\langle L^2 \rangle$ for acentric reflections are 0.5, 0.333 respectively for untwinned datasets, and 0.375, 0.2 for perfectly twinned datasets.

5 Model quality

5.1 Standard geometry

Bond lengths and bond angles in the following residue types are not validated in this section: L7D

The Z score for a bond length (or angle) is the number of standard deviations the observed value is removed from the expected value. A bond length (or angle) with $|Z| > 5$ is considered an outlier worth inspection. RMSZ is the root-mean-square of all Z scores of the bond lengths (or angles).

Mol	Chain	Bond lengths		Bond angles	
		RMSZ	# Z >5	RMSZ	# Z >5
1	A	0.49	0/2315	0.61	0/3130
1	B	0.50	0/2328	0.62	0/3151
All	All	0.49	0/4643	0.62	0/6281

There are no bond length outliers.

There are no bond angle outliers.

There are no chirality outliers.

There are no planarity outliers.

5.2 Too-close contacts

In the following table, the Non-H and H(model) columns list the number of non-hydrogen atoms and hydrogen atoms in the chain respectively. The H(added) column lists the number of hydrogen atoms added and optimized by MolProbity. The Clashes column lists the number of clashes within the asymmetric unit, whereas Symm-Clashes lists symmetry related clashes.

Mol	Chain	Non-H	H(model)	H(added)	Clashes	Symm-Clashes
1	A	2263	0	2204	13	0
1	B	2275	0	2176	10	0
2	A	62	0	0	0	0
2	B	25	0	0	0	0
3	A	32	0	0	0	0
3	B	29	0	0	0	0
All	All	4686	0	4380	23	0

The all-atom clashscore is defined as the number of clashes found per 1000 atoms (including hydrogen atoms). The all-atom clashscore for this structure is 3.

All (23) close contacts within the same asymmetric unit are listed below, sorted by their clash

magnitude.

Atom-1	Atom-2	Interatomic distance (Å)	Clash overlap (Å)
1:B:289:ASN:HD22	1:B:327:HIS:HD1	1.41	0.68
1:B:214:GLN:HE21	1:B:216:ARG:HH11	1.41	0.66
1:B:155:MET:HA	1:B:155:MET:CE	2.28	0.64
1:B:254:ILE:HD12	1:B:283:LEU:HB3	1.80	0.63
1:A:202:VAL:HG11	1:A:417:ILE:HD11	1.82	0.61
1:B:445:LEU:O	1:B:449:HIS:HD2	1.88	0.56
1:A:445:LEU:O	1:A:449:HIS:CD2	2.59	0.56
1:A:213:LEU:HD21	1:A:304:LEU:HD23	1.89	0.55
1:A:445:LEU:O	1:A:449:HIS:HD2	1.90	0.55
1:B:155:MET:HA	1:B:155:MET:HE3	1.88	0.54
1:B:254:ILE:HD11	1:B:287:ARG:HD2	1.89	0.54
1:A:214:GLN:HE21	1:A:216:ARG:HH11	1.57	0.53
1:A:289:ASN:HD22	1:A:327:HIS:HD1	1.56	0.53
1:B:202:VAL:HG11	1:B:417:ILE:HD11	1.90	0.53
1:A:254:ILE:HD11	1:A:287:ARG:HD2	1.91	0.52
1:A:254:ILE:HD12	1:A:283:LEU:HB3	1.95	0.48
1:A:279:ALA:HB1	1:A:283:LEU:HD13	1.98	0.45
1:A:277:LYS:HD2	1:A:449:HIS:CE1	2.51	0.45
1:A:163:ASP:OD2	1:A:249:TYR:OH	2.31	0.43
1:A:285:GLN:NE2	1:A:327:HIS:NE2	2.68	0.42
1:B:254:ILE:CD1	1:B:287:ARG:HD2	2.50	0.42
1:B:445:LEU:O	1:B:449:HIS:CD2	2.70	0.41
1:A:202:VAL:HG21	1:A:417:ILE:HG12	2.03	0.41

There are no symmetry-related clashes.

5.3 Torsion angles ⓘ

5.3.1 Protein backbone ⓘ

In the following table, the Percentiles column shows the percent Ramachandran outliers of the chain as a percentile score with respect to all X-ray entries followed by that with respect to entries of similar resolution.

The Analysed column shows the number of residues for which the backbone conformation was analysed, and the total number of residues.

Mol	Chain	Analysed	Favoured	Allowed	Outliers	Percentiles	
1	A	282/351 (80%)	271 (96%)	10 (4%)	1 (0%)	36	43
1	B	289/351 (82%)	277 (96%)	10 (4%)	2 (1%)	24	27

Continued on next page...

Continued from previous page...

Mol	Chain	Analysed	Favoured	Allowed	Outliers	Percentiles	
All	All	571/702 (81%)	548 (96%)	20 (4%)	3 (0%)	31	36

All (3) Ramachandran outliers are listed below:

Mol	Chain	Res	Type
1	B	234	LYS
1	A	230	ASP
1	B	315	PHE

5.3.2 Protein sidechains ⓘ

In the following table, the Percentiles column shows the percent sidechain outliers of the chain as a percentile score with respect to all X-ray entries followed by that with respect to entries of similar resolution.

The Analysed column shows the number of residues for which the sidechain conformation was analysed, and the total number of residues.

Mol	Chain	Analysed	Rotameric	Outliers	Percentiles	
1	A	235/310 (76%)	221 (94%)	14 (6%)	21	26
1	B	231/310 (74%)	221 (96%)	10 (4%)	32	41
All	All	466/620 (75%)	442 (95%)	24 (5%)	25	33

All (24) residues with a non-rotameric sidechain are listed below:

Mol	Chain	Res	Type
1	A	159	MET
1	A	178	LEU
1	A	207	CYS
1	A	213	LEU
1	A	235	GLU
1	A	243	MET
1	A	260	VAL
1	A	308	LEU
1	A	317	GLN
1	A	358	GLN
1	A	387	ARG
1	A	402	SER
1	A	406	GLN
1	A	444	SER
1	B	155	MET

Continued on next page...

Continued from previous page...

Mol	Chain	Res	Type
1	B	159	MET
1	B	167	SER
1	B	213	LEU
1	B	243	MET
1	B	269	ILE
1	B	308	LEU
1	B	341	VAL
1	B	381	ARG
1	B	460	SER

Some sidechains can be flipped to improve hydrogen bonding and reduce clashes. All (12) such sidechains are listed below:

Mol	Chain	Res	Type
1	A	214	GLN
1	A	272	GLN
1	A	285	GLN
1	A	449	HIS
1	B	214	GLN
1	B	224	ASN
1	B	272	GLN
1	B	285	GLN
1	B	383	GLN
1	B	449	HIS
1	B	453	HIS
1	B	457	GLN

5.3.3 RNA ⓘ

There are no RNA molecules in this entry.

5.4 Non-standard residues in protein, DNA, RNA chains ⓘ

There are no non-standard protein/DNA/RNA residues in this entry.

5.5 Carbohydrates ⓘ

There are no carbohydrates in this entry.

5.6 Ligand geometry

3 ligands are modelled in this entry.

In the following table, the Counts columns list the number of bonds (or angles) for which Mogul statistics could be retrieved, the number of bonds (or angles) that are observed in the model and the number of bonds (or angles) that are defined in the Chemical Component Dictionary. The Link column lists molecule types, if any, to which the group is linked. The Z score for a bond length (or angle) is the number of standard deviations the observed value is removed from the expected value. A bond length (or angle) with $|Z| > 2$ is considered an outlier worth inspection. RMSZ is the root-mean-square of all Z scores of the bond lengths (or angles).

Mol	Type	Chain	Res	Link	Bond lengths			Bond angles		
					Counts	RMSZ	# Z > 2	Counts	RMSZ	# Z > 2
2	L7D	A	501[A]	-	31,33,33	0.52	1 (3%)	48,54,54	0.84	1 (2%)
2	L7D	A	501[B]	-	31,33,33	0.34	0	48,54,54	0.68	1 (2%)
2	L7D	B	501	-	23,26,33	0.46	0	37,44,54	0.63	1 (2%)

In the following table, the Chirals column lists the number of chiral outliers, the number of chiral centers analysed, the number of these observed in the model and the number defined in the Chemical Component Dictionary. Similar counts are reported in the Torsion and Rings columns. '-' means no outliers of that kind were identified.

Mol	Type	Chain	Res	Link	Chirals	Torsions	Rings
2	L7D	A	501[A]	-	-	4/45/54/54	0/3/3/3
2	L7D	A	501[B]	-	-	11/45/54/54	0/3/3/3
2	L7D	B	501	-	-	4/36/48/54	0/2/2/3

All (1) bond length outliers are listed below:

Mol	Chain	Res	Type	Atoms	Z	Observed(Å)	Ideal(Å)
2	A	501[A]	L7D	C7-C2	2.34	1.57	1.53

All (3) bond angle outliers are listed below:

Mol	Chain	Res	Type	Atoms	Z	Observed(°)	Ideal(°)
2	A	501[B]	L7D	C9-C7-C2	3.41	115.89	110.30
2	A	501[A]	L7D	C9-C7-C2	3.24	115.61	110.30
2	B	501	L7D	C9-C7-C2	2.43	114.28	110.30

There are no chirality outliers.

All (19) torsion outliers are listed below:

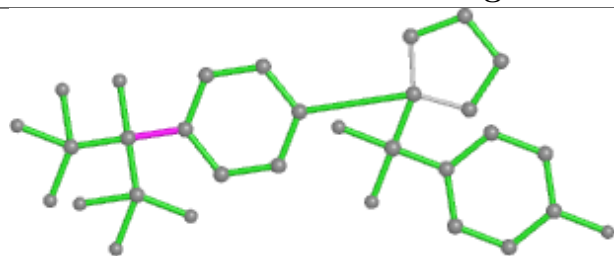
Mol	Chain	Res	Type	Atoms
2	A	501[B]	L7D	C5-C8-S1-O2
2	A	501[B]	L7D	C5-C8-S1-O3
2	A	501[B]	L7D	C17-C8-S1-O2
2	A	501[B]	L7D	C20-C8-S1-O2
2	A	501[B]	L7D	C20-C8-S1-O3
2	B	501	L7D	C6-C5-C8-C20
2	A	501[B]	L7D	C17-C8-S1-C11
2	A	501[B]	L7D	C20-C8-S1-C11
2	A	501[A]	L7D	C4-C5-C8-C20
2	A	501[A]	L7D	C4-C5-C8-C17
2	A	501[A]	L7D	C6-C5-C8-C17
2	B	501	L7D	C4-C5-C8-C17
2	B	501	L7D	C4-C5-C8-C20
2	B	501	L7D	C6-C5-C8-C17
2	A	501[A]	L7D	C6-C5-C8-S1
2	A	501[B]	L7D	C12-C11-S1-O2
2	A	501[B]	L7D	C1-C2-C7-O1
2	A	501[B]	L7D	C16-C11-S1-O2
2	A	501[B]	L7D	C1-C2-C7-C9

There are no ring outliers.

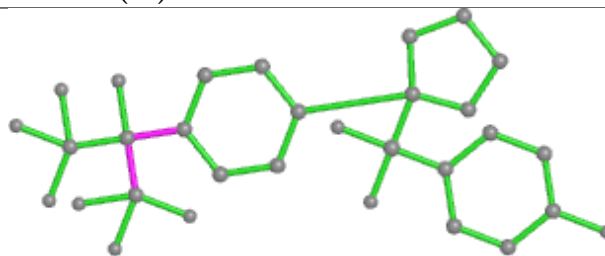
No monomer is involved in short contacts.

The following is a two-dimensional graphical depiction of Mogul quality analysis of bond lengths, bond angles, torsion angles, and ring geometry for all instances of the Ligand of Interest. In addition, ligands with molecular weight > 250 and outliers as shown on the validation Tables will also be included. For torsion angles, if less than 5% of the Mogul distribution of torsion angles is within 10 degrees of the torsion angle in question, then that torsion angle is considered an outlier. Any bond that is central to one or more torsion angles identified as an outlier by Mogul will be highlighted in the graph. For rings, the root-mean-square deviation (RMSD) between the ring in question and similar rings identified by Mogul is calculated over all ring torsion angles. If the average RMSD is greater than 60 degrees and the minimal RMSD between the ring in question and any Mogul-identified rings is also greater than 60 degrees, then that ring is considered an outlier. The outliers are highlighted in purple. The color gray indicates Mogul did not find sufficient equivalents in the CSD to analyse the geometry.

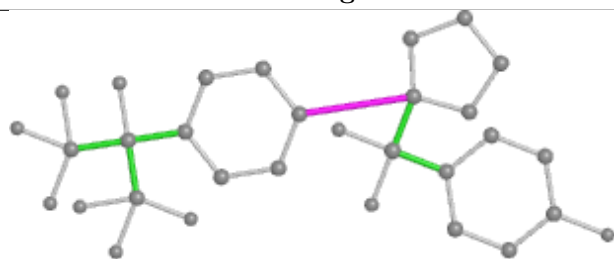
Ligand L7D A 501 (A)



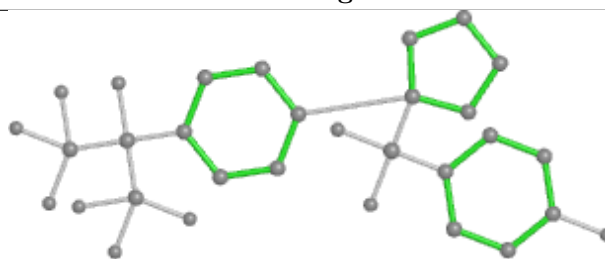
Bond lengths



Bond angles

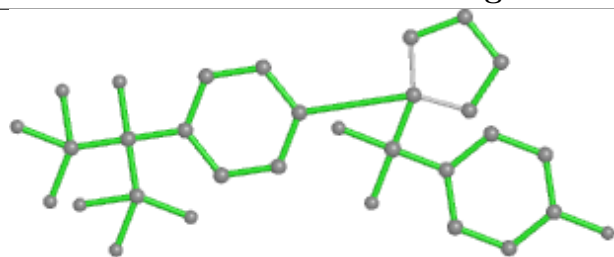


Torsions

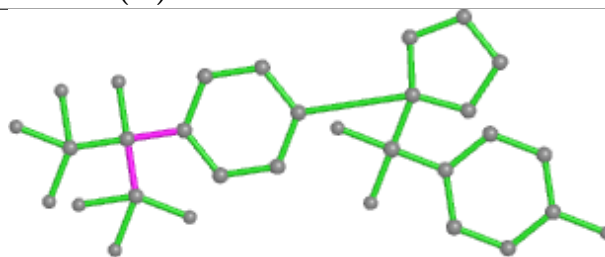


Rings

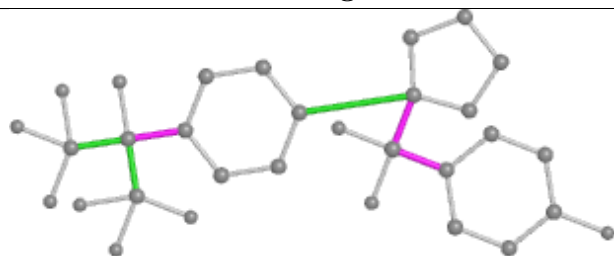
Ligand L7D A 501 (B)



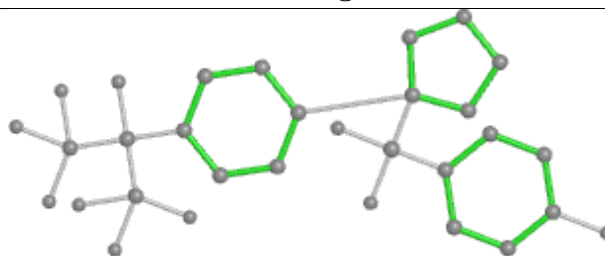
Bond lengths



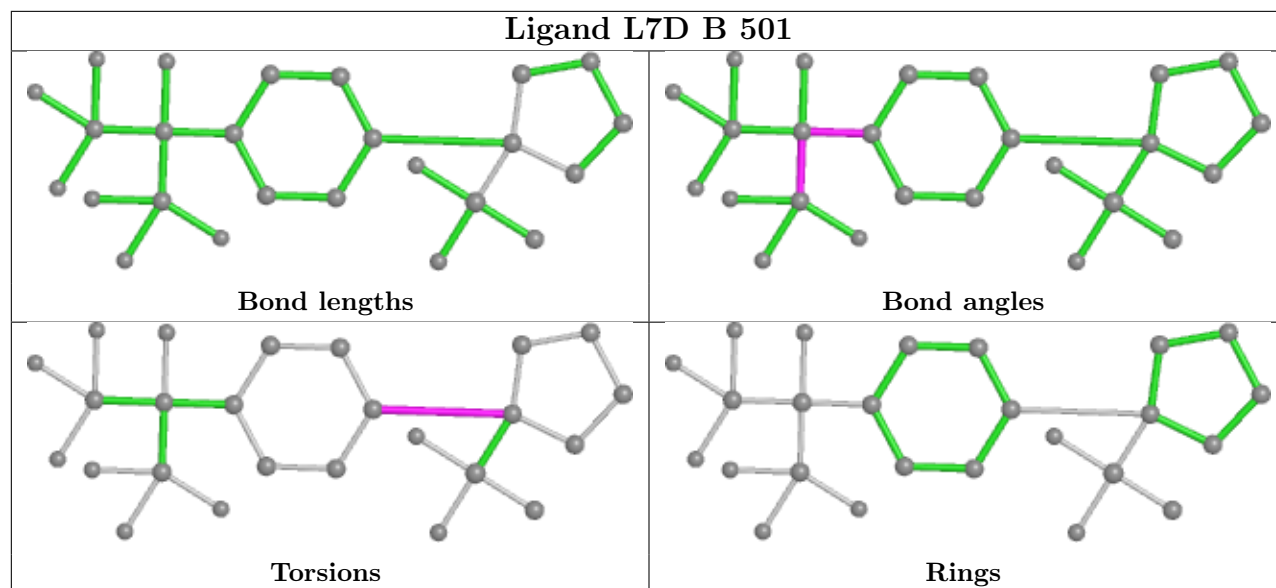
Bond angles



Torsions



Rings



5.7 Other polymers [i](#)

There are no such residues in this entry.

5.8 Polymer linkage issues [i](#)

There are no chain breaks in this entry.

6 Fit of model and data

6.1 Protein, DNA and RNA chains

In the following table, the column labelled ‘#RSRZ> 2’ contains the number (and percentage) of RSRZ outliers, followed by percent RSRZ outliers for the chain as percentile scores relative to all X-ray entries and entries of similar resolution. The OWAB column contains the minimum, median, 95th percentile and maximum values of the occupancy-weighted average B-factor per residue. The column labelled ‘Q< 0.9’ lists the number of (and percentage) of residues with an average occupancy less than 0.9.

Mol	Chain	Analysed	<RSRZ>	#RSRZ>2	OWAB(Å ²)	Q<0.9
1	A	288/351 (82%)	0.17	12 (4%) 36 42	37, 60, 95, 136	0
1	B	294/351 (83%)	0.21	15 (5%) 28 34	37, 61, 97, 119	0
All	All	582/702 (82%)	0.19	27 (4%) 32 38	37, 60, 96, 136	0

All (27) RSRZ outliers are listed below:

Mol	Chain	Res	Type	RSRZ
1	A	311	THR	8.8
1	A	312	ALA	8.3
1	B	312	ALA	6.2
1	A	318	LEU	6.2
1	A	178	LEU	6.0
1	B	231	SER	4.8
1	A	445	LEU	4.5
1	B	311	THR	4.4
1	B	310	ASP	3.6
1	B	460	SER	3.6
1	A	310	ASP	3.6
1	B	199	TRP	3.6
1	A	199	TRP	3.3
1	A	317	GLN	3.0
1	B	234	LYS	2.9
1	B	142	GLY	2.9
1	B	235	GLU	2.8
1	B	232	GLY	2.8
1	B	313	GLY	2.6
1	A	316	GLN	2.6
1	B	237	PHE	2.5
1	A	309	GLU	2.5
1	A	232	GLY	2.4
1	A	320	LEU	2.4

Continued on next page...

Continued from previous page...

Mol	Chain	Res	Type	RSRZ
1	B	362	VAL	2.1
1	B	229	ALA	2.1
1	B	193	ARG	2.1

6.2 Non-standard residues in protein, DNA, RNA chains [i](#)

There are no non-standard protein/DNA/RNA residues in this entry.

6.3 Carbohydrates [i](#)

There are no carbohydrates in this entry.

6.4 Ligands [i](#)

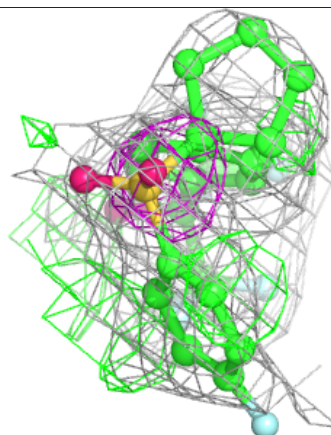
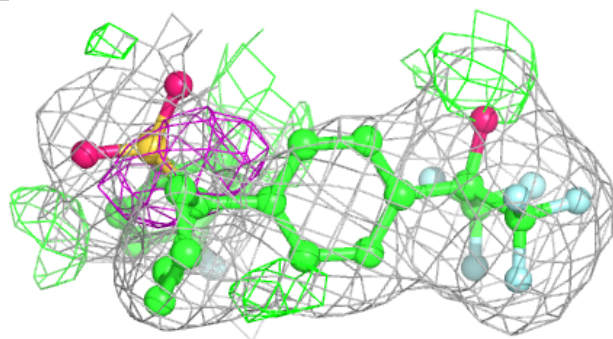
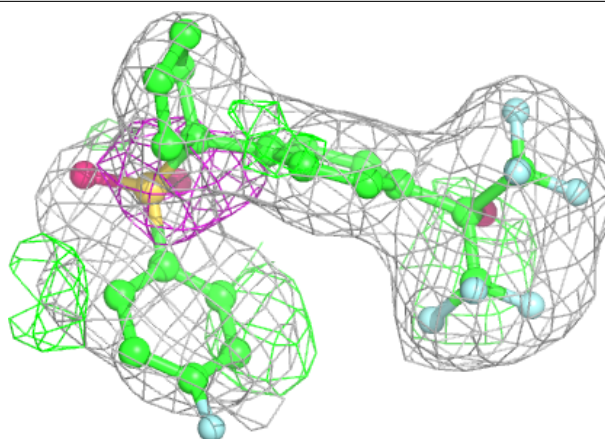
In the following table, the Atoms column lists the number of modelled atoms in the group and the number defined in the chemical component dictionary. The B-factors column lists the minimum, median, 95th percentile and maximum values of B factors of atoms in the group. The column labelled 'Q< 0.9' lists the number of atoms with occupancy less than 0.9.

Mol	Type	Chain	Res	Atoms	RSCC	RSR	B-factors(Å ²)	Q<0.9
2	L7D	A	501[A]	31/31	0.83	0.22	51,62,84,87	31
2	L7D	A	501[B]	31/31	0.83	0.22	91,95,96,96	31
2	L7D	B	501	25/31	0.91	0.15	60,67,94,96	0

The following is a graphical depiction of the model fit to experimental electron density of all instances of the Ligand of Interest. In addition, ligands with molecular weight > 250 and outliers as shown on the geometry validation Tables will also be included. Each fit is shown from different orientation to approximate a three-dimensional view.

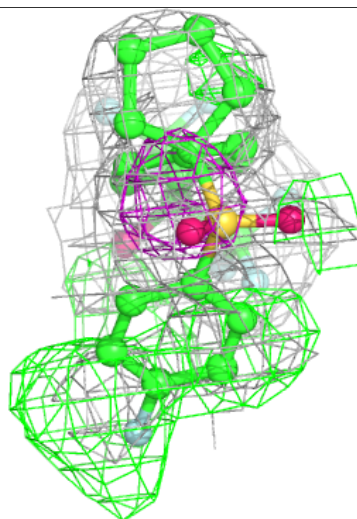
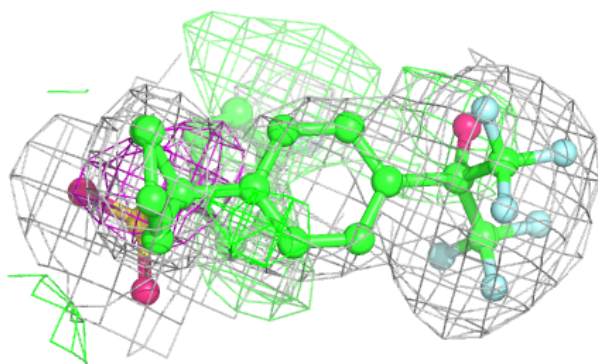
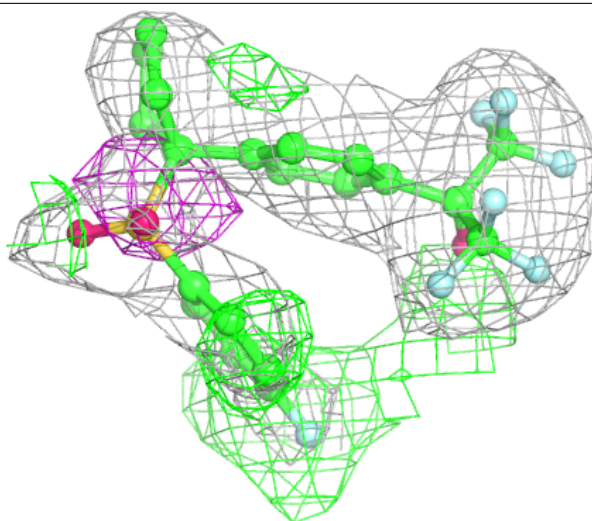
Electron density around L7D A 501 (A):

$2mF_o-DF_c$ (at 0.7 rmsd) in gray
 mF_o-DF_c (at 3 rmsd) in purple (negative)
and green (positive)



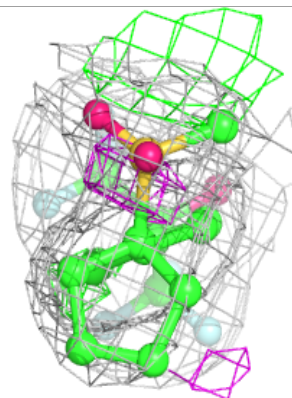
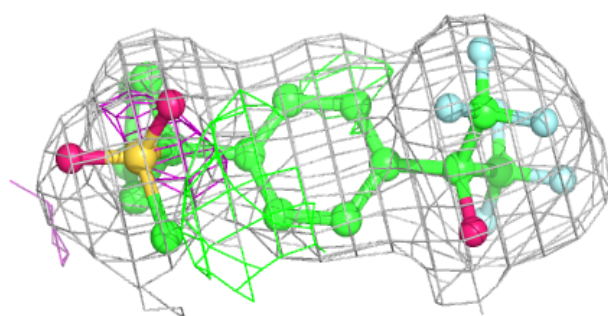
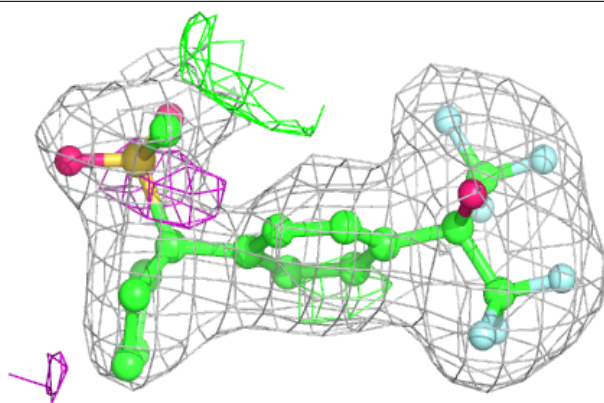
Electron density around L7D A 501 (B):

$2mF_o-DF_c$ (at 0.7 rmsd) in gray
 mF_o-DF_c (at 3 rmsd) in purple (negative)
and green (positive)



Electron density around L7D B 501:

$2mF_o-DF_c$ (at 0.7 rmsd) in gray
 mF_o-DF_c (at 3 rmsd) in purple (negative)
and green (positive)



6.5 Other polymers [i](#)

There are no such residues in this entry.