



wwPDB X-ray Structure Validation Summary Report ⓘ

Mar 9, 2018 – 01:56 pm GMT

PDB ID : 2O26
Title : Structure of a class III RTK signaling assembly
Authors : Liu, H.; Chen, X.; Focia, P.J.; He, X.
Deposited on : 2006-11-29
Resolution : 2.50 Å(reported)

This is a wwPDB X-ray Structure Validation Summary Report for a publicly released PDB entry.

We welcome your comments at validation@mail.wwpdb.org

A user guide is available at

<https://www.wwpdb.org/validation/2017/XrayValidationReportHelp>

with specific help available everywhere you see the ⓘ symbol.

The following versions of software and data (see [references ⓘ](#)) were used in the production of this report:

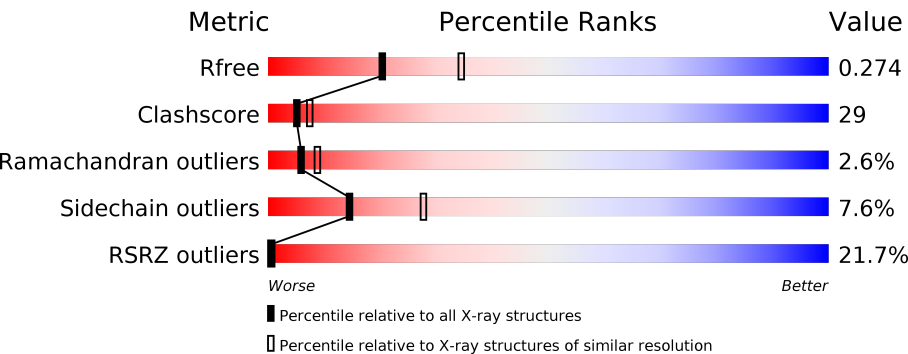
MolProbity : 4.02b-467
Mogul : 1.7.3 (157068), CSD as539be (2018)
Xtriage (Phenix) : 1.13
EDS : trunk30967
Percentile statistics : 20171227.v01 (using entries in the PDB archive December 27th 2017)
Refmac : 5.8.0158
CCP4 : 7.0 (Gargrove)
Ideal geometry (proteins) : Engh & Huber (2001)
Ideal geometry (DNA, RNA) : Parkinson et al. (1996)
Validation Pipeline (wwPDB-VP) : trunk30967

1 Overall quality at a glance ⓘ

The following experimental techniques were used to determine the structure:
X-RAY DIFFRACTION

The reported resolution of this entry is 2.50 Å.

Percentile scores (ranging between 0-100) for global validation metrics of the entry are shown in the following graphic. The table shows the number of entries on which the scores are based.



Metric	Whole archive (#Entries)	Similar resolution (#Entries, resolution range(Å))
R_{free}	111664	4155 (2.50-2.50)
Clashscore	122126	4827 (2.50-2.50)
Ramachandran outliers	120053	4735 (2.50-2.50)
Sidechain outliers	120020	4737 (2.50-2.50)
RSRZ outliers	108989	4058 (2.50-2.50)

The table below summarises the geometric issues observed across the polymeric chains and their fit to the electron density. The red, orange, yellow and green segments on the lower bar indicate the fraction of residues that contain outliers for ≥ 3 , 2, 1 and 0 types of geometric quality criteria. A grey segment represents the fraction of residues that are not modelled. The numeric value for each fraction is indicated below the corresponding segment, with a dot representing fractions $\leq 5\%$. The upper red bar (where present) indicates the fraction of residues that have poor fit to the electron density. The numeric value is given above the bar.

Mol	Chain	Length	Quality of chain
1	A	145	<div><div>9%</div><div><div></div><div>62%</div><div>30%</div><div>7%</div><div>..</div></div></div>
1	B	145	<div><div>19%</div><div><div></div><div>55%</div><div>33%</div><div>7%</div><div>..</div></div></div>
1	E	145	<div><div>15%</div><div><div></div><div>54%</div><div>36%</div><div>6%</div><div>..</div></div></div>
1	F	145	<div><div>21%</div><div><div></div><div>59%</div><div>30%</div><div>7%</div><div>.</div></div></div>
2	U	290	<div><div>21%</div><div><div></div><div>49%</div><div>39%</div><div>6%</div><div>5%</div></div></div>
2	W	290	<div><div>33%</div><div><div></div><div>56%</div><div>33%</div><div>6%</div><div>5%</div></div></div>

Continued on next page...

Continued from previous page...

Mol	Chain	Length	Quality of chain
2	X	290	<div><div></div><div>18%</div><div>47%</div><div>40%</div><div>8%</div><div>5%</div></div>
2	Y	290	<div><div></div><div>20%</div><div>53%</div><div>36%</div><div>6%</div><div>5%</div></div>

2 Entry composition

There are 7 unique types of molecules in this entry. The entry contains 15104 atoms, of which 0 are hydrogens and 0 are deuteriums.

In the tables below, the ZeroOcc column contains the number of atoms modelled with zero occupancy, the AltConf column contains the number of residues with at least one atom in alternate conformation and the Trace column contains the number of residues modelled with at most 2 atoms.

- Molecule 1 is a protein called Kit ligand.

Mol	Chain	Residues	Atoms					ZeroOcc	AltConf	Trace
1	A	144	Total	C	N	O	S	0	0	0
			1140	722	189	220	9			
1	B	139	Total	C	N	O	S	0	0	0
			1090	692	174	215	9			
1	E	139	Total	C	N	O	S	0	0	0
			1090	692	174	215	9			
1	F	139	Total	C	N	O	S	0	0	0
			1090	692	174	215	9			

There are 24 discrepancies between the modelled and reference sequences:

Chain	Residue	Modelled	Actual	Comment	Reference
A	142	HIS	-	EXPRESSION TAG	UNP P20826
A	143	HIS	-	EXPRESSION TAG	UNP P20826
A	144	HIS	-	EXPRESSION TAG	UNP P20826
A	145	HIS	-	EXPRESSION TAG	UNP P20826
A	146	HIS	-	EXPRESSION TAG	UNP P20826
A	147	HIS	-	EXPRESSION TAG	UNP P20826
B	142	HIS	-	EXPRESSION TAG	UNP P20826
B	143	HIS	-	EXPRESSION TAG	UNP P20826
B	144	HIS	-	EXPRESSION TAG	UNP P20826
B	145	HIS	-	EXPRESSION TAG	UNP P20826
B	146	HIS	-	EXPRESSION TAG	UNP P20826
B	147	HIS	-	EXPRESSION TAG	UNP P20826
E	142	HIS	-	EXPRESSION TAG	UNP P20826
E	143	HIS	-	EXPRESSION TAG	UNP P20826
E	144	HIS	-	EXPRESSION TAG	UNP P20826
E	145	HIS	-	EXPRESSION TAG	UNP P20826
E	146	HIS	-	EXPRESSION TAG	UNP P20826
E	147	HIS	-	EXPRESSION TAG	UNP P20826
F	142	HIS	-	EXPRESSION TAG	UNP P20826
F	143	HIS	-	EXPRESSION TAG	UNP P20826
F	144	HIS	-	EXPRESSION TAG	UNP P20826

Continued on next page...

Continued from previous page...

Chain	Residue	Modelled	Actual	Comment	Reference
F	145	HIS	-	EXPRESSION TAG	UNP P20826
F	146	HIS	-	EXPRESSION TAG	UNP P20826
F	147	HIS	-	EXPRESSION TAG	UNP P20826

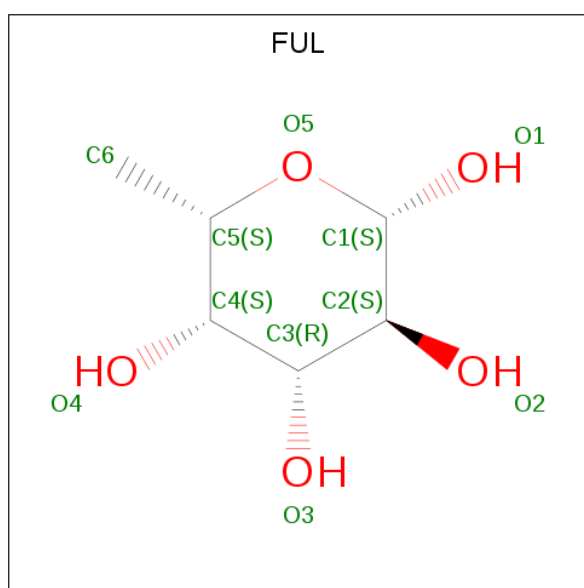
- Molecule 2 is a protein called Mast/stem cell growth factor receptor.

Mol	Chain	Residues	Atoms					ZeroOcc	AltConf	Trace
2	X	275	Total	C	N	O	S	0	0	0
			2164	1369	372	411	12			
2	Y	275	Total	C	N	O	S	0	0	0
			2164	1369	372	411	12			
2	U	275	Total	C	N	O	S	0	0	0
			2164	1369	372	411	12			
2	W	275	Total	C	N	O	S	0	0	0
			2164	1369	372	411	12			

There are 4 discrepancies between the modelled and reference sequences:

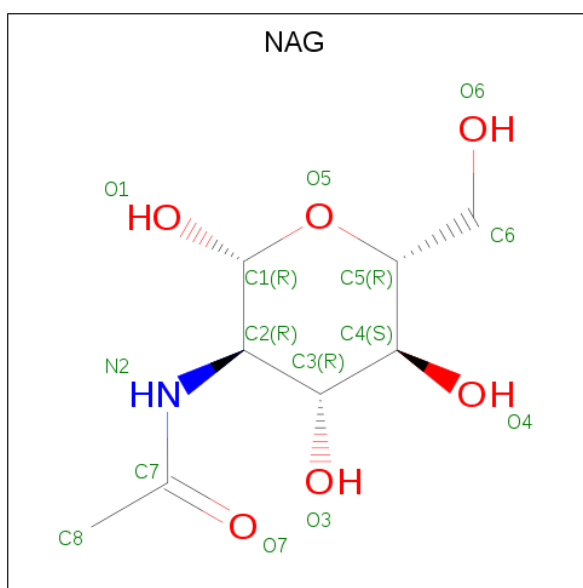
Chain	Residue	Modelled	Actual	Comment	Reference
U	146	GLN	ASN	ENGINEERED	UNP P05532
W	146	GLN	ASN	ENGINEERED	UNP P05532
X	146	GLN	ASN	ENGINEERED	UNP P05532
Y	146	GLN	ASN	ENGINEERED	UNP P05532

- Molecule 3 is BETA-L-FUCOSE (three-letter code: FUL) (formula: C₆H₁₂O₅).



Mol	Chain	Residues	Atoms			ZeroOcc	AltConf
3	X	1	Total	C	O	0	0
			10	6	4		
3	Y	1	Total	C	O	0	0
			10	6	4		
3	U	1	Total	C	O	0	0
			10	6	4		
3	W	1	Total	C	O	0	0
			10	6	4		

- Molecule 4 is N-ACETYL-D-GLUCOSAMINE (three-letter code: NAG) (formula: $C_8H_{15}NO_6$).



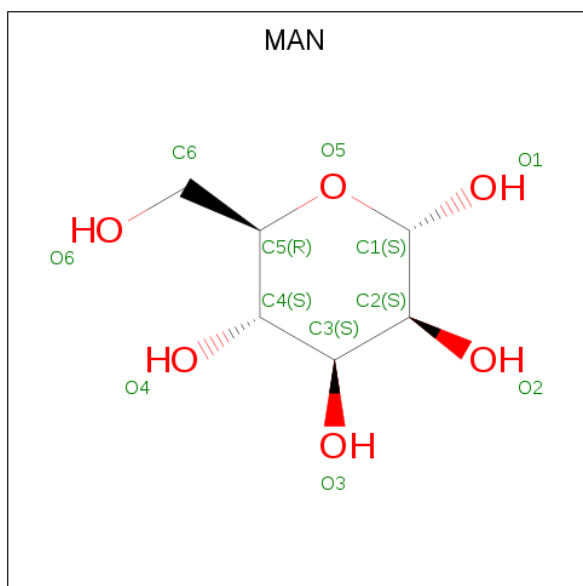
Mol	Chain	Residues	Atoms				ZeroOcc	AltConf
4	X	1	Total	C	N	O	0	0
			14	8	1	5		
4	X	1	Total	C	N	O	0	0
			14	8	1	5		
4	X	1	Total	C	N	O	0	0
			14	8	1	5		
4	X	1	Total	C	N	O	0	0
			14	8	1	5		
4	Y	1	Total	C	N	O	0	0
			14	8	1	5		
4	Y	1	Total	C	N	O	0	0
			14	8	1	5		
4	Y	1	Total	C	N	O	0	0
			14	8	1	5		
4	Y	1	Total	C	N	O	0	0
			14	8	1	5		

Continued on next page...

Continued from previous page...

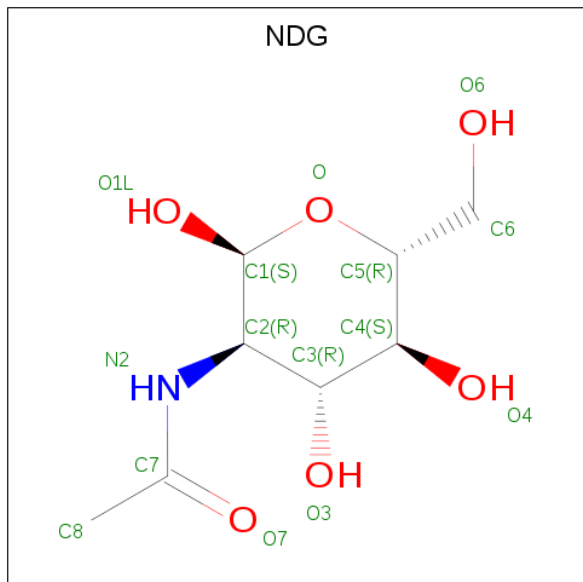
Mol	Chain	Residues	Atoms				ZeroOcc	AltConf
4	U	1	Total	C	N	O	0	0
			14	8	1	5		
4	U	1	Total	C	N	O	0	0
			14	8	1	5		
4	U	1	Total	C	N	O	0	0
			14	8	1	5		
4	U	1	Total	C	N	O	0	0
			14	8	1	5		
4	W	1	Total	C	N	O	0	0
			14	8	1	5		
4	W	1	Total	C	N	O	0	0
			14	8	1	5		
4	W	1	Total	C	N	O	0	0
			14	8	1	5		

- Molecule 5 is ALPHA-D-MANNOSE (three-letter code: MAN) (formula: C₆H₁₂O₆).



Mol	Chain	Residues	Atoms			ZeroOcc	AltConf
5	X	1	Total	C	O	0	0
			11	6	5		
5	Y	1	Total	C	O	0	0
			11	6	5		
5	U	1	Total	C	O	0	0
			11	6	5		
5	W	1	Total	C	O	0	0
			11	6	5		

- Molecule 6 is 2-(ACETYLAMINO)-2-DEOXY-A-D-GLUCOPYRANOSE (three-letter code: NDG) (formula: $C_8H_{15}NO_6$).



Mol	Chain	Residues	Atoms				ZeroOcc	AltConf
6	W	1	Total	C	N	O	0	0
			14	8	1	5		

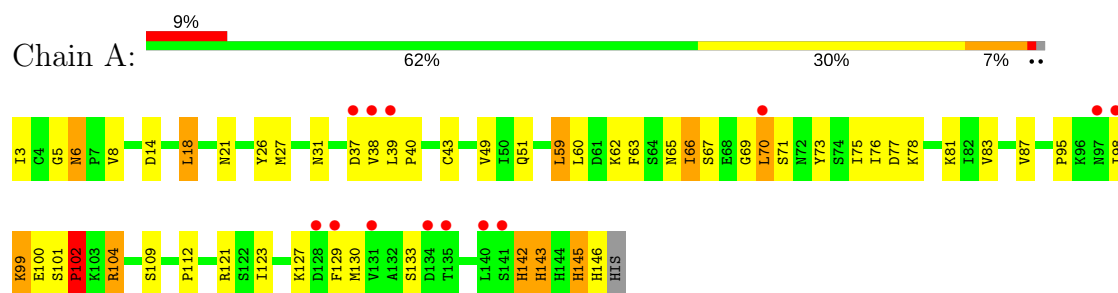
- Molecule 7 is water.

Mol	Chain	Residues	Atoms		ZeroOcc	AltConf
7	A	171	Total	O	0	0
			171	171		
7	B	144	Total	O	0	0
			144	144		
7	E	152	Total	O	0	0
			152	152		
7	F	143	Total	O	0	0
			143	143		
7	X	273	Total	O	0	0
			273	273		
7	Y	310	Total	O	0	0
			310	310		
7	U	270	Total	O	0	0
			270	270		
7	W	267	Total	O	0	0
			267	267		

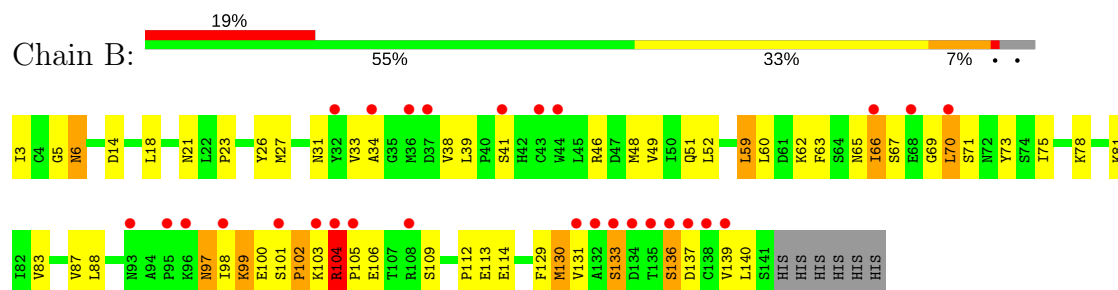
3 Residue-property plots [i](#)

These plots are drawn for all protein, RNA and DNA chains in the entry. The first graphic for a chain summarises the proportions of the various outlier classes displayed in the second graphic. The second graphic shows the sequence view annotated by issues in geometry and electron density. Residues are color-coded according to the number of geometric quality criteria for which they contain at least one outlier: green = 0, yellow = 1, orange = 2 and red = 3 or more. A red dot above a residue indicates a poor fit to the electron density ($RSRZ > 2$). Stretches of 2 or more consecutive residues without any outlier are shown as a green connector. Residues present in the sample, but not in the model, are shown in grey.

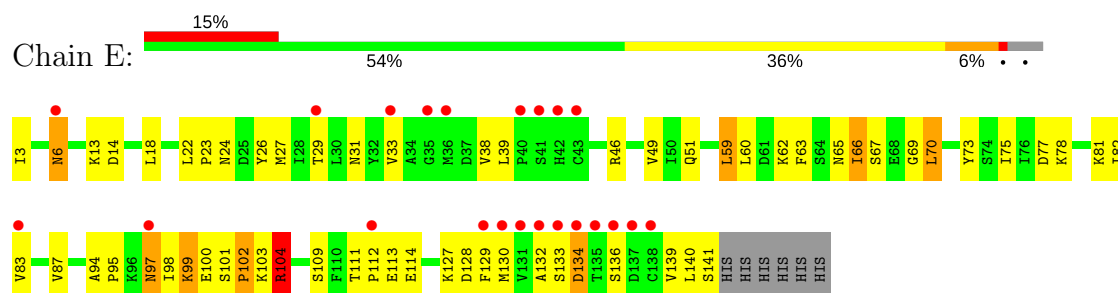
• Molecule 1: Kit ligand



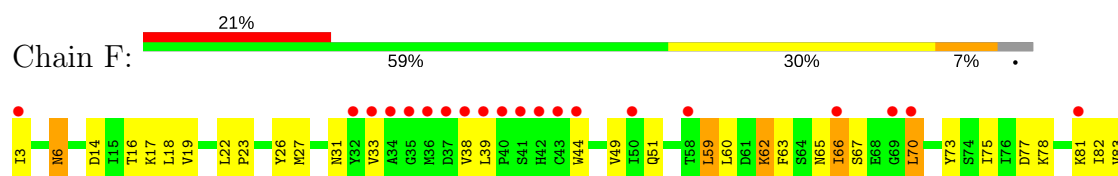
• Molecule 1: Kit ligand



• Molecule 1: Kit ligand

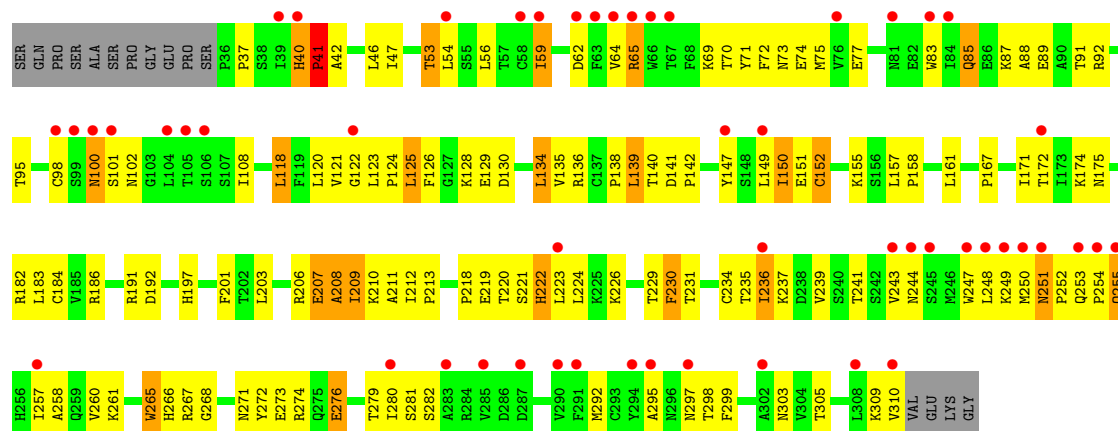


• Molecule 1: Kit ligand

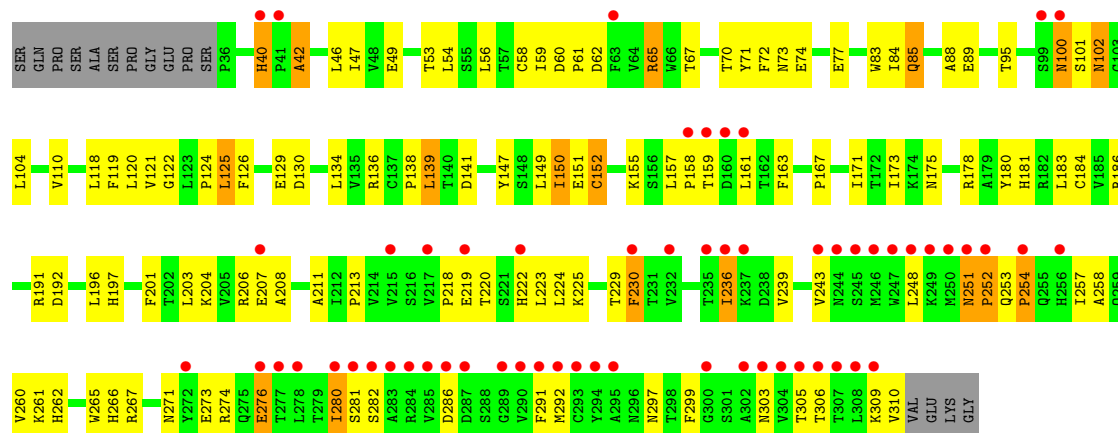




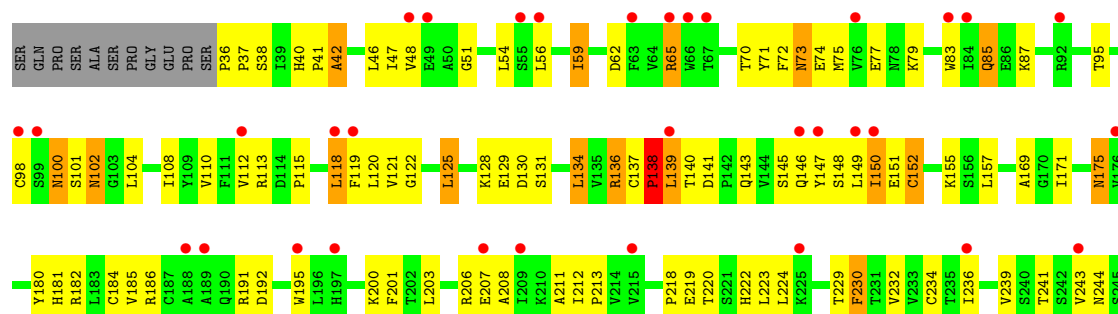
• Molecule 2: Mast/stem cell growth factor receptor

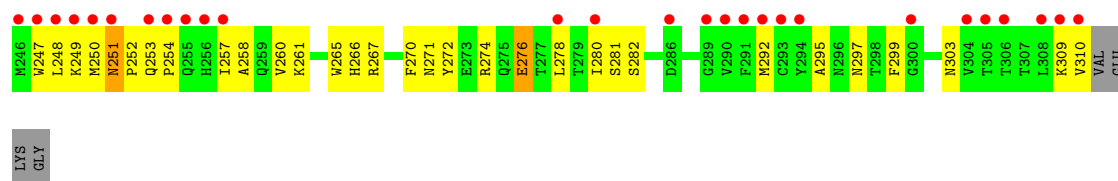


• Molecule 2: Mast/stem cell growth factor receptor

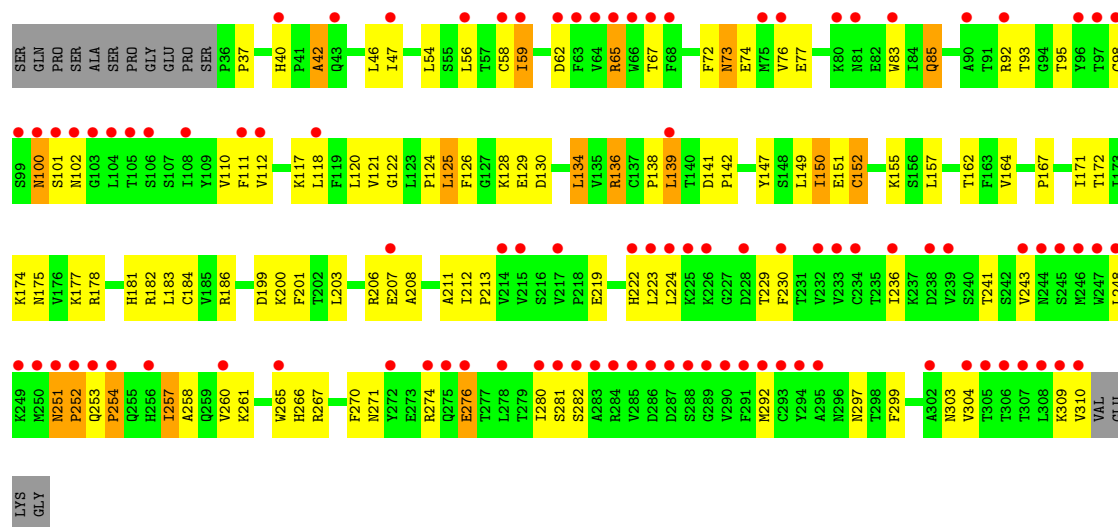


• Molecule 2: Mast/stem cell growth factor receptor





● Molecule 2: Mast/stem cell growth factor receptor



4 Data and refinement statistics

Property	Value	Source
Space group	P 1 21 1	Depositor
Cell constants a, b, c, α , β , γ	76.85Å 200.15Å 82.02Å 90.00° 91.42° 90.00°	Depositor
Resolution (Å)	19.93 – 2.50 48.46 – 2.50	Depositor EDS
% Data completeness (in resolution range)	96.7 (19.93-2.50) 96.8 (48.46-2.50)	Depositor EDS
R_{merge}	0.04	Depositor
R_{sym}	(Not available)	Depositor
$\langle I/\sigma(I) \rangle$ ¹	2.38 (at 2.51Å)	Xtriage
Refinement program	CNS 1.1	Depositor
R, R_{free}	0.237 , 0.270 0.242 , 0.274	Depositor DCC
R_{free} test set	4160 reflections (5.04%)	wwPDB-VP
Wilson B-factor (Å ²)	65.2	Xtriage
Anisotropy	0.303	Xtriage
Bulk solvent k_{sol} (e/Å ³), B_{sol} (Å ²)	0.28 , 87.8	EDS
L-test for twinning ²	$\langle L \rangle = 0.48$, $\langle L^2 \rangle = 0.31$	Xtriage
Estimated twinning fraction	0.034 for h,-k,-l	Xtriage
F_o, F_c correlation	0.91	EDS
Total number of atoms	15104	wwPDB-VP
Average B, all atoms (Å ²)	98.0	wwPDB-VP

Xtriage's analysis on translational NCS is as follows: *The largest off-origin peak in the Patterson function is 3.52% of the height of the origin peak. No significant pseudotranslation is detected.*

¹Intensities estimated from amplitudes.

²Theoretical values of $\langle |L| \rangle$, $\langle L^2 \rangle$ for acentric reflections are 0.5, 0.333 respectively for untwinned datasets, and 0.375, 0.2 for perfectly twinned datasets.

5 Model quality

5.1 Standard geometry

Bond lengths and bond angles in the following residue types are not validated in this section: FUL, NAG, NDG, MAN

The Z score for a bond length (or angle) is the number of standard deviations the observed value is removed from the expected value. A bond length (or angle) with $|Z| > 5$ is considered an outlier worth inspection. RMSZ is the root-mean-square of all Z scores of the bond lengths (or angles).

Mol	Chain	Bond lengths		Bond angles	
		RMSZ	$\# Z > 5$	RMSZ	$\# Z > 5$
1	A	0.40	0/1164	0.70	1/1579 (0.1%)
1	B	0.48	1/1109 (0.1%)	0.67	0/1504
1	E	0.40	0/1109	0.64	1/1504 (0.1%)
1	F	0.41	0/1109	0.65	1/1504 (0.1%)
2	U	0.38	0/2214	0.72	1/3011 (0.0%)
2	W	0.35	0/2214	0.64	0/3011
2	X	0.37	0/2214	0.69	2/3011 (0.1%)
2	Y	0.36	0/2214	0.65	0/3011
All	All	0.39	1/13347 (0.0%)	0.67	6/18135 (0.0%)

All (1) bond length outliers are listed below:

Mol	Chain	Res	Type	Atoms	Z	Observed(Å)	Ideal(Å)
1	B	133	SER	CA-CB	7.77	1.64	1.52

The worst 5 of 6 bond angle outliers are listed below:

Mol	Chain	Res	Type	Atoms	Z	Observed($^{\circ}$)	Ideal($^{\circ}$)
2	U	138	PRO	CA-N-CD	-14.78	90.81	111.50
2	X	41	PRO	CA-N-CD	-12.45	94.08	111.50
1	A	102	PRO	CA-N-CD	-8.86	99.09	111.50
1	F	134	ASP	C-N-CA	-5.22	108.64	121.70
2	X	208	ALA	N-CA-C	-5.22	96.92	111.00

There are no chirality outliers.

There are no planarity outliers.

5.2 Too-close contacts ⓘ

In the following table, the Non-H and H(model) columns list the number of non-hydrogen atoms and hydrogen atoms in the chain respectively. The H(added) column lists the number of hydrogen atoms added and optimized by MolProbity. The Clashes column lists the number of clashes within the asymmetric unit, whereas Symm-Clashes lists symmetry related clashes.

Mol	Chain	Non-H	H(model)	H(added)	Clashes	Symm-Clashes
1	A	1140	0	1121	62	0
1	B	1090	0	1086	68	0
1	E	1090	0	1086	65	0
1	F	1090	0	1086	54	0
2	U	2164	0	2140	139	0
2	W	2164	0	2140	117	0
2	X	2164	0	2140	145	0
2	Y	2164	0	2140	125	0
3	U	10	0	10	1	0
3	W	10	0	10	0	0
3	X	10	0	10	0	0
3	Y	10	0	10	0	0
4	U	56	0	48	3	0
4	W	42	0	36	1	0
4	X	56	0	48	2	0
4	Y	56	0	48	3	0
5	U	11	0	10	0	0
5	W	11	0	10	1	0
5	X	11	0	10	0	0
5	Y	11	0	10	0	0
6	W	14	0	12	1	0
7	A	171	0	0	24	0
7	B	144	0	0	32	0
7	E	152	0	0	24	0
7	F	143	0	0	23	0
7	U	270	0	0	37	0
7	W	267	0	0	35	0
7	X	273	0	0	50	0
7	Y	310	0	0	46	0
All	All	15104	0	13211	761	0

The all-atom clashscore is defined as the number of clashes found per 1000 atoms (including hydrogen atoms). The all-atom clashscore for this structure is 29.

The worst 5 of 761 close contacts within the same asymmetric unit are listed below, sorted by their clash magnitude.

Atom-1	Atom-2	Interatomic distance (Å)	Clash overlap (Å)
2:W:184:CYS:HB2	7:W:321:HOH:O	1.50	1.08
2:U:251:ASN:HB2	2:U:252:PRO:HD3	1.36	1.06
2:W:251:ASN:HB2	2:W:252:PRO:HD3	1.37	1.06
2:Y:251:ASN:HB2	2:Y:252:PRO:HD3	1.34	1.06
2:X:251:ASN:HB2	2:X:252:PRO:HD3	1.35	1.03

There are no symmetry-related clashes.

5.3 Torsion angles [i](#)

5.3.1 Protein backbone [i](#)

In the following table, the Percentiles column shows the percent Ramachandran outliers of the chain as a percentile score with respect to all X-ray entries followed by that with respect to entries of similar resolution.

The Analysed column shows the number of residues for which the backbone conformation was analysed, and the total number of residues.

Mol	Chain	Analysed	Favoured	Allowed	Outliers	Percentiles	
1	A	142/145 (98%)	124 (87%)	13 (9%)	5 (4%)	4	5
1	B	137/145 (94%)	122 (89%)	10 (7%)	5 (4%)	4	5
1	E	137/145 (94%)	124 (90%)	9 (7%)	4 (3%)	5	7
1	F	137/145 (94%)	121 (88%)	12 (9%)	4 (3%)	5	7
2	U	273/290 (94%)	252 (92%)	15 (6%)	6 (2%)	7	11
2	W	273/290 (94%)	255 (93%)	12 (4%)	6 (2%)	7	11
2	X	273/290 (94%)	253 (93%)	15 (6%)	5 (2%)	9	16
2	Y	273/290 (94%)	249 (91%)	16 (6%)	8 (3%)	5	7
All	All	1645/1740 (94%)	1500 (91%)	102 (6%)	43 (3%)	6	9

5 of 43 Ramachandran outliers are listed below:

Mol	Chain	Res	Type
1	B	102	PRO
1	E	102	PRO
1	F	102	PRO
2	X	73	ASN
2	Y	73	ASN

5.3.2 Protein sidechains

In the following table, the Percentiles column shows the percent sidechain outliers of the chain as a percentile score with respect to all X-ray entries followed by that with respect to entries of similar resolution.

The Analysed column shows the number of residues for which the sidechain conformation was analysed, and the total number of residues.

Mol	Chain	Analysed	Rotameric	Outliers	Percentiles	
1	A	135/136 (99%)	124 (92%)	11 (8%)	13	25
1	B	130/136 (96%)	119 (92%)	11 (8%)	12	22
1	E	130/136 (96%)	120 (92%)	10 (8%)	14	27
1	F	130/136 (96%)	120 (92%)	10 (8%)	14	27
2	U	247/259 (95%)	231 (94%)	16 (6%)	19	35
2	W	247/259 (95%)	230 (93%)	17 (7%)	17	32
2	X	247/259 (95%)	224 (91%)	23 (9%)	10	19
2	Y	247/259 (95%)	230 (93%)	17 (7%)	17	32
All	All	1513/1580 (96%)	1398 (92%)	115 (8%)	14	28

5 of 115 residues with a non-rotameric sidechain are listed below:

Mol	Chain	Res	Type
2	X	125	LEU
2	X	276	GLU
2	W	134	LEU
2	X	134	LEU
2	X	209	ILE

Some sidechains can be flipped to improve hydrogen bonding and reduce clashes. 5 of 38 such sidechains are listed below:

Mol	Chain	Res	Type
2	X	255	GLN
2	Y	100	ASN
2	W	251	ASN
2	X	297	ASN
2	Y	102	ASN

5.3.3 RNA

There are no RNA molecules in this entry.

5.4 Non-standard residues in protein, DNA, RNA chains [i](#)

There are no non-standard protein/DNA/RNA residues in this entry.

5.5 Carbohydrates [i](#)

There are no carbohydrates in this entry.

5.6 Ligand geometry [i](#)

24 ligands are modelled in this entry.

In the following table, the Counts columns list the number of bonds (or angles) for which Mogul statistics could be retrieved, the number of bonds (or angles) that are observed in the model and the number of bonds (or angles) that are defined in the Chemical Component Dictionary. The Link column lists molecule types, if any, to which the group is linked. The Z score for a bond length (or angle) is the number of standard deviations the observed value is removed from the expected value. A bond length (or angle) with $|Z| > 2$ is considered an outlier worth inspection. RMSZ is the root-mean-square of all Z scores of the bond lengths (or angles).

Mol	Type	Chain	Res	Link	Bond lengths			Bond angles		
					Counts	RMSZ	$\# Z > 2$	Counts	RMSZ	$\# Z > 2$
3	FUL	U	1	4	9,10,11	0.50	0	13,14,16	0.64	0
4	NAG	U	2	3,2,4	14,14,15	0.76	0	17,19,21	1.12	2 (11%)
4	NAG	U	3	4	14,14,15	0.59	0	17,19,21	0.71	0
4	NAG	U	4	2,4	14,14,15	0.78	0	17,19,21	1.37	2 (11%)
4	NAG	U	5	5,4	14,14,15	0.72	0	17,19,21	0.80	0
5	MAN	U	6	4	11,11,12	0.65	0	15,15,17	0.73	1 (6%)
3	FUL	W	1	4	9,10,11	0.44	0	13,14,16	0.39	0
4	NAG	W	2	3,2,4	14,14,15	0.59	0	17,19,21	0.95	1 (5%)
4	NAG	W	3	4	14,14,15	0.53	0	17,19,21	0.57	0
6	NDG	W	4	2,4	14,14,15	0.81	0	17,19,21	0.56	0
4	NAG	W	5	5,6	14,14,15	0.63	0	17,19,21	0.81	0
5	MAN	W	6	4	11,11,12	0.70	0	15,15,17	0.67	1 (6%)
3	FUL	X	1	4	9,10,11	0.41	0	13,14,16	0.55	0
4	NAG	X	2	3,2,4	14,14,15	0.60	0	17,19,21	1.04	2 (11%)
4	NAG	X	3	4	14,14,15	0.55	0	17,19,21	0.67	0
4	NAG	X	4	2,4	14,14,15	0.73	0	17,19,21	1.40	2 (11%)
4	NAG	X	5	5,4	14,14,15	0.70	0	17,19,21	0.77	0
5	MAN	X	6	4	11,11,12	0.64	0	15,15,17	0.65	0
3	FUL	Y	1	4	9,10,11	0.45	0	13,14,16	0.55	0
4	NAG	Y	2	3,2,4	14,14,15	0.72	0	17,19,21	1.19	3 (17%)
4	NAG	Y	3	4	14,14,15	0.62	0	17,19,21	0.59	0

Mol	Type	Chain	Res	Link	Bond lengths			Bond angles		
					Counts	RMSZ	# Z > 2	Counts	RMSZ	# Z > 2
4	NAG	Y	4	2,4	14,14,15	0.81	0	17,19,21	1.65	2 (11%)
4	NAG	Y	5	5,4	14,14,15	0.63	0	17,19,21	0.93	1 (5%)
5	MAN	Y	6	4	11,11,12	0.58	0	15,15,17	0.55	0

In the following table, the Chirals column lists the number of chiral outliers, the number of chiral centers analysed, the number of these observed in the model and the number defined in the Chemical Component Dictionary. Similar counts are reported in the Torsion and Rings columns. '-' means no outliers of that kind were identified.

Mol	Type	Chain	Res	Link	Chirals	Torsions	Rings
3	FUL	U	1	4	-	0/0/17/20	0/1/1/1
4	NAG	U	2	3,2,4	-	0/6/23/26	0/1/1/1
4	NAG	U	3	4	-	0/6/23/26	0/1/1/1
4	NAG	U	4	2,4	-	1/6/23/26	0/1/1/1
4	NAG	U	5	5,4	-	0/6/23/26	0/1/1/1
5	MAN	U	6	4	-	0/2/19/22	0/1/1/1
3	FUL	W	1	4	-	0/0/17/20	0/1/1/1
4	NAG	W	2	3,2,4	-	0/6/23/26	0/1/1/1
4	NAG	W	3	4	-	0/6/23/26	0/1/1/1
6	NDG	W	4	2,4	-	0/6/23/26	0/1/1/1
4	NAG	W	5	5,6	-	0/6/23/26	0/1/1/1
5	MAN	W	6	4	-	0/2/19/22	0/1/1/1
3	FUL	X	1	4	-	0/0/17/20	0/1/1/1
4	NAG	X	2	3,2,4	-	0/6/23/26	0/1/1/1
4	NAG	X	3	4	-	0/6/23/26	0/1/1/1
4	NAG	X	4	2,4	-	0/6/23/26	0/1/1/1
4	NAG	X	5	5,4	-	0/6/23/26	0/1/1/1
5	MAN	X	6	4	-	0/2/19/22	0/1/1/1
3	FUL	Y	1	4	-	0/0/17/20	0/1/1/1
4	NAG	Y	2	3,2,4	-	0/6/23/26	0/1/1/1
4	NAG	Y	3	4	-	0/6/23/26	0/1/1/1
4	NAG	Y	4	2,4	-	1/6/23/26	0/1/1/1
4	NAG	Y	5	5,4	-	0/6/23/26	0/1/1/1
5	MAN	Y	6	4	-	0/2/19/22	0/1/1/1

There are no bond length outliers.

The worst 5 of 17 bond angle outliers are listed below:

Mol	Chain	Res	Type	Atoms	Z	Observed(°)	Ideal(°)
4	U	2	NAG	C2-N2-C7	-2.47	119.34	122.94
4	X	2	NAG	C2-N2-C7	-2.22	119.70	122.94

Continued on next page...

Continued from previous page...

Mol	Chain	Res	Type	Atoms	Z	Observed(°)	Ideal(°)
4	Y	2	NAG	O5-C1-C2	-2.17	108.52	111.52
4	U	2	NAG	O5-C1-C2	-2.14	108.57	111.52
4	W	2	NAG	O5-C1-C2	-2.06	108.68	111.52

There are no chirality outliers.

All (2) torsion outliers are listed below:

Mol	Chain	Res	Type	Atoms
4	U	4	NAG	O7-C7-N2-C2
4	Y	4	NAG	O7-C7-N2-C2

There are no ring outliers.

10 monomers are involved in 10 short contacts:

Mol	Chain	Res	Type	Clashes	Symm-Clashes
3	U	1	FUL	1	0
4	U	3	NAG	3	0
6	W	4	NDG	1	0
4	W	5	NAG	1	0
5	W	6	MAN	1	0
4	X	2	NAG	1	0
4	X	3	NAG	1	0
4	X	5	NAG	1	0
4	Y	2	NAG	2	0
4	Y	5	NAG	1	0

5.7 Other polymers [i](#)

There are no such residues in this entry.

5.8 Polymer linkage issues [i](#)

There are no chain breaks in this entry.

6 Fit of model and data [i](#)

6.1 Protein, DNA and RNA chains [i](#)

In the following table, the column labelled ‘#RSRZ > 2’ contains the number (and percentage) of RSRZ outliers, followed by percent RSRZ outliers for the chain as percentile scores relative to all X-ray entries and entries of similar resolution. The OWAB column contains the minimum, median, 95th percentile and maximum values of the occupancy-weighted average B-factor per residue. The column labelled ‘Q < 0.9’ lists the number of (and percentage) of residues with an average occupancy less than 0.9.

Mol	Chain	Analysed	<RSRZ>	#RSRZ > 2	OWAB(Å ²)	Q < 0.9
1	A	144/145 (99%)	0.75	13 (9%) 9 9	42, 68, 170, 188	0
1	B	139/145 (95%)	1.31	28 (20%) 1 1	39, 76, 187, 194	0
1	E	139/145 (95%)	1.50	22 (15%) 2 1	39, 69, 184, 200	0
1	F	139/145 (95%)	1.57	30 (21%) 0 0	45, 86, 185, 197	0
2	U	275/290 (94%)	1.11	60 (21%) 0 0	44, 85, 168, 187	0
2	W	275/290 (94%)	2.12	97 (35%) 0 0	59, 104, 183, 193	0
2	X	275/290 (94%)	1.18	52 (18%) 1 1	49, 90, 162, 189	0
2	Y	275/290 (94%)	1.54	59 (21%) 1 0	46, 81, 180, 191	0
All	All	1661/1740 (95%)	1.42	361 (21%) 0 0	39, 87, 177, 200	0

The worst 5 of 361 RSRZ outliers are listed below:

Mol	Chain	Res	Type	RSRZ
1	F	36	MET	15.0
2	W	224	LEU	13.2
2	Y	247	TRP	13.0
1	B	133	SER	13.0
2	Y	248	LEU	12.7

6.2 Non-standard residues in protein, DNA, RNA chains [i](#)

There are no non-standard protein/DNA/RNA residues in this entry.

6.3 Carbohydrates [i](#)

There are no carbohydrates in this entry.

6.4 Ligands ⓘ

In the following table, the Atoms column lists the number of modelled atoms in the group and the number defined in the chemical component dictionary. The B-factors column lists the minimum, median, 95th percentile and maximum values of B factors of atoms in the group. The column labelled 'Q< 0.9' lists the number of atoms with occupancy less than 0.9.

Mol	Type	Chain	Res	Atoms	RSCC	RSR	B-factors(Å ²)	Q<0.9
5	MAN	W	6	11/12	0.50	0.29	190,196,198,198	0
4	NAG	X	5	14/15	0.67	0.20	183,193,195,196	0
4	NAG	W	5	14/15	0.68	0.31	187,195,198,198	0
3	FUL	W	1	10/11	0.72	0.26	160,171,172,173	0
4	NAG	W	2	14/15	0.73	0.14	145,156,169,178	0
4	NAG	Y	3	14/15	0.74	0.18	185,191,194,196	0
6	NDG	W	4	14/15	0.77	0.30	164,180,187,190	0
4	NAG	U	5	14/15	0.77	0.21	179,186,194,197	0
4	NAG	W	3	14/15	0.79	0.17	185,191,194,196	0
4	NAG	Y	5	14/15	0.79	0.15	180,190,198,198	0
4	NAG	X	4	14/15	0.80	0.19	112,143,156,171	0
5	MAN	X	6	11/12	0.81	0.12	193,197,198,198	0
5	MAN	Y	6	11/12	0.82	0.11	161,171,175,177	0
4	NAG	Y	2	14/15	0.82	0.27	156,169,179,192	0
4	NAG	U	3	14/15	0.84	0.15	170,189,193,194	0
3	FUL	U	1	10/11	0.84	0.31	124,131,139,141	0
5	MAN	U	6	11/12	0.84	0.10	191,196,198,198	0
3	FUL	Y	1	10/11	0.85	0.44	154,171,175,177	0
4	NAG	U	4	14/15	0.86	0.17	151,162,169,171	0
4	NAG	Y	4	14/15	0.88	0.24	137,150,160,170	0
4	NAG	U	2	14/15	0.91	0.14	97,118,131,148	0
4	NAG	X	3	14/15	0.91	0.14	156,163,170,171	0
3	FUL	X	1	10/11	0.93	0.18	112,119,127,129	0
4	NAG	X	2	14/15	0.93	0.13	111,124,133,143	0

6.5 Other polymers ⓘ

There are no such residues in this entry.