



# Full wwPDB X-ray Structure Validation Report ⓘ

Oct 7, 2019 – 02:30 PM EDT

PDB ID : 5O26  
Title : Crystal structure of WNK3 kinase domain in a diphosphorylated state and in complex with AMP-PNP/Mg2+  
Authors : Pinkas, D.M.; Bufton, J.C.; Newman, J.A.; Kopec, J.; Borkowska, O.; Chalk, R.; Burgess-Brown, N.A.; von Delft, F.; Arrowsmith, C.H.; Edwards, A.M.; Bountra, C.; Bullock, A.  
Deposited on : 2017-05-19  
Resolution : 2.38 Å(reported)

This is a Full wwPDB X-ray Structure Validation Report for a publicly released PDB entry.

We welcome your comments at [validation@mail.wwpdb.org](mailto:validation@mail.wwpdb.org)

A user guide is available at

<https://www.wwpdb.org/validation/2017/XrayValidationReportHelp>

with specific help available everywhere you see the ⓘ symbol.

---

The following versions of software and data (see [references ⓘ](#)) were used in the production of this report:

MolProbity : 4.02b-467  
Mogul : 1.8.0 (224370), CSD as540be (2019)  
Xtriage (Phenix) : 1.13  
EDS : 2.4  
buster-report : 1.1.7 (2018)  
Percentile statistics : 20171227.v01 (using entries in the PDB archive December 27th 2017)  
Refmac : 5.8.0158  
CCP4 : 7.0 (Gargrove)  
Ideal geometry (proteins) : Engh & Huber (2001)  
Ideal geometry (DNA, RNA) : Parkinson et al. (1996)  
Validation Pipeline (wwPDB-VP) : 2.4

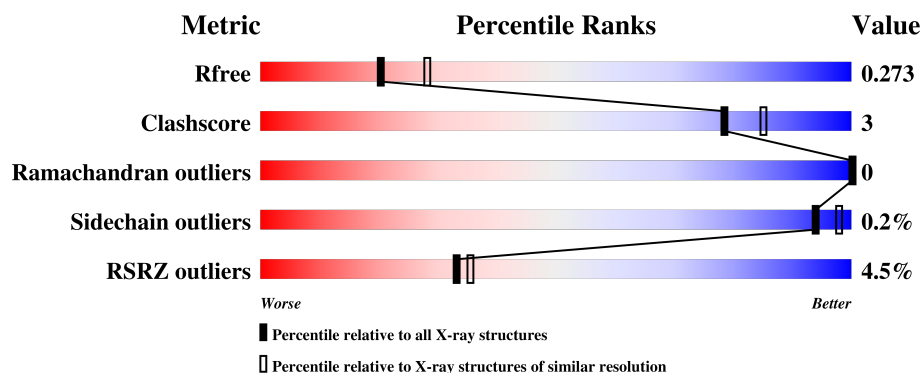
# 1 Overall quality at a glance

The following experimental techniques were used to determine the structure:

*X-RAY DIFFRACTION*

The reported resolution of this entry is 2.38 Å.

Percentile scores (ranging between 0-100) for global validation metrics of the entry are shown in the following graphic. The table shows the number of entries on which the scores are based.



Metric	Whole archive (#Entries)	Similar resolution (#Entries, resolution range(Å))
$R_{free}$	111664	4850 (2.40-2.36)
Clashscore	122126	5405 (2.40-2.36)
Ramachandran outliers	120053	5324 (2.40-2.36)
Sidechain outliers	120020	5326 (2.40-2.36)
RSRZ outliers	108989	4741 (2.40-2.36)

The table below summarises the geometric issues observed across the polymeric chains and their fit to the electron density. The red, orange, yellow and green segments on the lower bar indicate the fraction of residues that contain outliers for  $\geq 3$ , 2, 1 and 0 types of geometric quality criteria. A grey segment represents the fraction of residues that are not modelled. The numeric value for each fraction is indicated below the corresponding segment, with a dot representing fractions  $\leq 5\%$ . The upper red bar (where present) indicates the fraction of residues that have poor fit to the electron density. The numeric value is given above the bar.

Mol	Chain	Length	Quality of chain
1	A	284	<div> <div>4%</div> <div>88%</div> <div>8%</div> <div>.</div> </div>
1	B	284	<div> <div>5%</div> <div>86%</div> <div>8%</div> <div>6%</div> </div>

## 2 Entry composition [i](#)

There are 5 unique types of molecules in this entry. The entry contains 4489 atoms, of which 0 are hydrogens and 0 are deuteriums.

In the tables below, the ZeroOcc column contains the number of atoms modelled with zero occupancy, the AltConf column contains the number of residues with at least one atom in alternate conformation and the Trace column contains the number of residues modelled with at most 2 atoms.

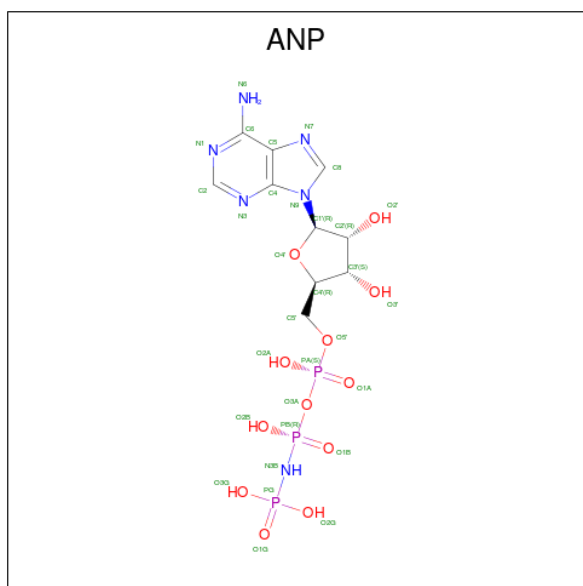
- Molecule 1 is a protein called Serine/threonine-protein kinase WNK3.

Mol	Chain	Residues	Atoms						ZeroOcc	AltConf	Trace
1	A	273	Total	C	N	O	P	S	0	0	0
			2143	1362	354	409	2	16			
1	B	267	Total	C	N	O	P	S	0	1	0
			2111	1342	352	399	2	16			

There are 4 discrepancies between the modelled and reference sequences:

Chain	Residue	Modelled	Actual	Comment	Reference
A	131	SER	-	expression tag	UNP Q9BYP7
A	132	MET	-	expression tag	UNP Q9BYP7
B	131	SER	-	expression tag	UNP Q9BYP7
B	132	MET	-	expression tag	UNP Q9BYP7

- Molecule 2 is PHOSPHOAMINOPHOSPHONIC ACID-ADENYLATE ESTER (three-letter code: ANP) (formula:  $C_{10}H_{17}N_6O_{12}P_3$ ).

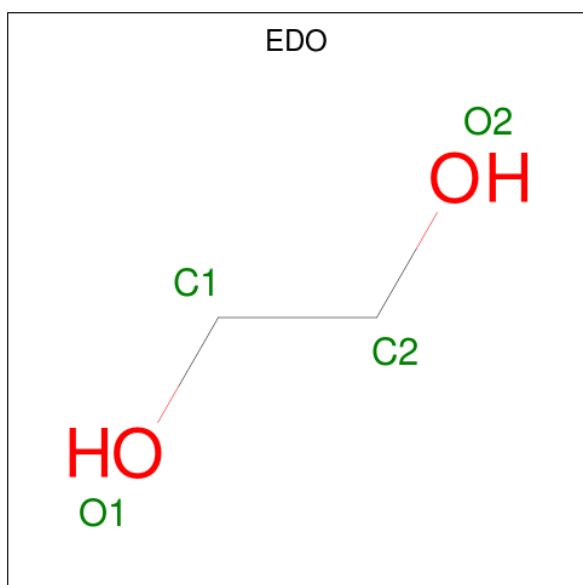


Mol	Chain	Residues	Atoms					ZeroOcc	AltConf
2	A	1	Total	C	N	O	P	0	0
			31	10	6	12	3		
2	B	1	Total	C	N	O	P	0	0
			31	10	6	12	3		

- Molecule 3 is MAGNESIUM ION (three-letter code: MG) (formula: Mg).

Mol	Chain	Residues	Atoms		ZeroOcc	AltConf
3	B	2	Total	Mg	0	0
			2	2		
3	A	2	Total	Mg	0	0
			2	2		

- Molecule 4 is 1,2-ETHANEDIOL (three-letter code: EDO) (formula: C<sub>2</sub>H<sub>6</sub>O<sub>2</sub>).



Mol	Chain	Residues	Atoms			ZeroOcc	AltConf
4	A	1	Total	C	O	0	0
			4	2	2		

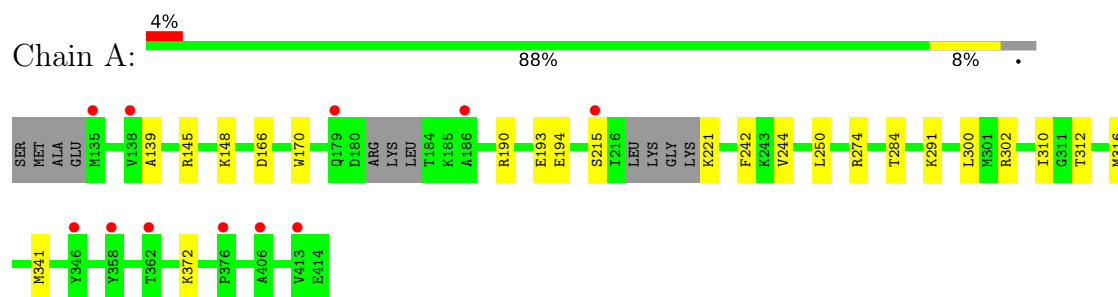
- Molecule 5 is water.

Mol	Chain	Residues	Atoms		ZeroOcc	AltConf
5	A	83	Total	O	0	0
			83	83		
5	B	82	Total	O	0	0
			82	82		

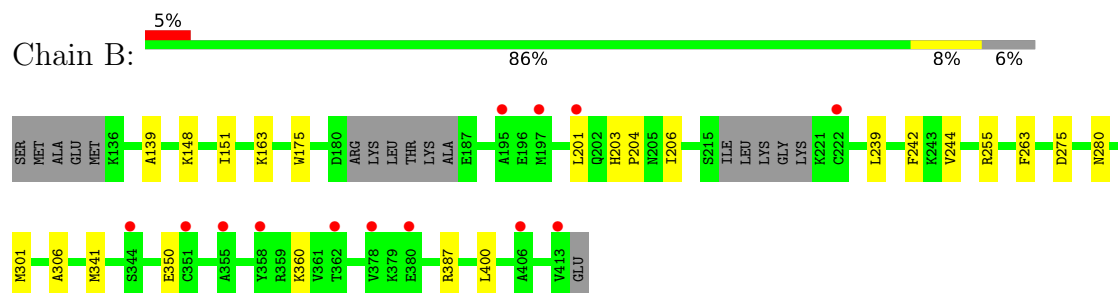
### 3 Residue-property plots [i](#)

These plots are drawn for all protein, RNA and DNA chains in the entry. The first graphic for a chain summarises the proportions of the various outlier classes displayed in the second graphic. The second graphic shows the sequence view annotated by issues in geometry and electron density. Residues are color-coded according to the number of geometric quality criteria for which they contain at least one outlier: green = 0, yellow = 1, orange = 2 and red = 3 or more. A red dot above a residue indicates a poor fit to the electron density ( $RSRZ > 2$ ). Stretches of 2 or more consecutive residues without any outlier are shown as a green connector. Residues present in the sample, but not in the model, are shown in grey.

- Molecule 1: Serine/threonine-protein kinase WNK3



- Molecule 1: Serine/threonine-protein kinase WNK3



## 4 Data and refinement statistics

Property	Value	Source
Space group	P 1	Depositor
Cell constants a, b, c, $\alpha$ , $\beta$ , $\gamma$	36.16Å 56.40Å 71.24Å 79.79° 80.73° 90.00°	Depositor
Resolution (Å)	47.66 – 2.38 55.48 – 2.38	Depositor EDS
% Data completeness (in resolution range)	98.0 (47.66-2.38) 98.0 (55.48-2.38)	Depositor EDS
$R_{merge}$	(Not available)	Depositor
$R_{sym}$	(Not available)	Depositor
$\langle I/\sigma(I) \rangle$ <sup>1</sup>	2.44 (at 2.37Å)	Xtriage
Refinement program	PHENIX (1.11.1 _2575: ???)	Depositor
R, $R_{free}$	0.228 , 0.278 0.227 , 0.273	Depositor DCC
$R_{free}$ test set	1083 reflections (5.03%)	wwPDB-VP
Wilson B-factor (Å <sup>2</sup> )	21.0	Xtriage
Anisotropy	0.713	Xtriage
Bulk solvent $k_{sol}$ (e/Å <sup>3</sup> ), $B_{sol}$ (Å <sup>2</sup> )	0.32 , 41.0	EDS
L-test for twinning <sup>2</sup>	$\langle  L  \rangle = 0.47$ , $\langle L^2 \rangle = 0.30$	Xtriage
Estimated twinning fraction	No twinning to report.	Xtriage
$F_o, F_c$ correlation	0.89	EDS
Total number of atoms	4489	wwPDB-VP
Average B, all atoms (Å <sup>2</sup> )	20.0	wwPDB-VP

Xtriage's analysis on translational NCS is as follows: *The largest off-origin peak in the Patterson function is 11.56% of the height of the origin peak. No significant pseudotranslation is detected.*

<sup>1</sup>Intensities estimated from amplitudes.

<sup>2</sup>Theoretical values of  $\langle |L| \rangle$ ,  $\langle L^2 \rangle$  for acentric reflections are 0.5, 0.333 respectively for untwinned datasets, and 0.375, 0.2 for perfectly twinned datasets.

## 5 Model quality

### 5.1 Standard geometry

Bond lengths and bond angles in the following residue types are not validated in this section: MG, ANP, EDO, SEP

The Z score for a bond length (or angle) is the number of standard deviations the observed value is removed from the expected value. A bond length (or angle) with  $|Z| > 5$  is considered an outlier worth inspection. RMSZ is the root-mean-square of all Z scores of the bond lengths (or angles).

Mol	Chain	Bond lengths		Bond angles	
		RMSZ	$\# Z  > 5$	RMSZ	$\# Z  > 5$
1	A	0.24	0/2165	0.42	0/2924
1	B	0.24	0/2132	0.42	0/2878
All	All	0.24	0/4297	0.42	0/5802

There are no bond length outliers.

There are no bond angle outliers.

There are no chirality outliers.

There are no planarity outliers.

### 5.2 Too-close contacts

In the following table, the Non-H and H(model) columns list the number of non-hydrogen atoms and hydrogen atoms in the chain respectively. The H(added) column lists the number of hydrogen atoms added and optimized by MolProbity. The Clashes column lists the number of clashes within the asymmetric unit, whereas Symm-Clashes lists symmetry related clashes.

Mol	Chain	Non-H	H(model)	H(added)	Clashes	Symm-Clashes
1	A	2143	0	2069	13	0
1	B	2111	0	2058	12	0
2	A	31	0	13	1	0
2	B	31	0	13	0	0
3	A	2	0	0	0	0
3	B	2	0	0	0	0
4	A	4	0	6	1	0
5	A	83	0	0	1	0
5	B	82	0	0	0	0
All	All	4489	0	4159	26	0

The all-atom clashscore is defined as the number of clashes found per 1000 atoms (including

hydrogen atoms). The all-atom clashscore for this structure is 3.

All (26) close contacts within the same asymmetric unit are listed below, sorted by their clash magnitude.

Atom-1	Atom-2	Interatomic distance (Å)	Clash overlap (Å)
1:B:239:LEU:HD11	1:B:341:MET:HA	1.72	0.72
1:B:203:HIS:HB3	1:B:206:ILE:HG22	1.83	0.61
1:A:190:ARG:NH2	1:A:300:LEU:O	2.36	0.58
1:A:194:GLU:HA	1:A:300:LEU:HD11	1.85	0.57
1:A:250:LEU:HG	1:A:341:MET:HE2	1.86	0.57
1:A:284:THR:HG21	1:A:291:LYS:HG3	1.87	0.55
1:B:151:ILE:HB	1:B:163:LYS:HB2	1.89	0.54
1:A:215:SER:O	1:A:221:LYS:N	2.42	0.53
2:A:501:ANP:O3G	2:A:501:ANP:O2B	2.26	0.53
1:A:139:ALA:HB3	1:A:148:LYS:HB3	1.92	0.52
1:B:350:GLU:OE1	1:B:360:LYS:NZ	2.42	0.52
1:A:193:GLU:HB2	1:A:302:ARG:HH22	1.77	0.50
1:B:139:ALA:HB3	1:B:148:LYS:HB3	1.94	0.50
1:A:274:ARG:NH2	1:A:310:ILE:HD11	2.27	0.49
1:B:148:LYS:HB2	1:B:175:TRP:CD2	2.48	0.48
1:A:242:PHE:O	1:A:244:VAL:N	2.45	0.47
1:B:255:ARG:NH2	1:B:400:LEU:O	2.47	0.47
1:A:145:ARG:HB2	4:A:504:EDO:H21	1.97	0.47
1:B:275:ASP:O	1:B:280:ASN:ND2	2.49	0.46
1:A:166:ASP:O	1:A:170:TRP:N	2.42	0.46
1:A:312:THR:O	1:A:316:MET:HG3	2.15	0.45
1:B:301:MET:HE1	1:B:306:ALA:HB2	1.97	0.45
1:B:203:HIS:CD2	1:B:204:PRO:HD2	2.53	0.44
1:B:201:LEU:HD13	1:B:263:PHE:HE2	1.84	0.43
1:A:372:LYS:NZ	5:A:611:HOH:O	2.47	0.43
1:B:242:PHE:C	1:B:244:VAL:H	2.22	0.42

There are no symmetry-related clashes.

## 5.3 Torsion angles [i](#)

### 5.3.1 Protein backbone [i](#)

In the following table, the Percentiles column shows the percent Ramachandran outliers of the chain as a percentile score with respect to all X-ray entries followed by that with respect to entries of similar resolution.

The Analysed column shows the number of residues for which the backbone conformation was



analysed, and the total number of residues.

Mol	Chain	Analysed	Favoured	Allowed	Outliers	Percentiles	
1	A	265/284 (93%)	253 (96%)	12 (4%)	0	100	100
1	B	260/284 (92%)	250 (96%)	10 (4%)	0	100	100
All	All	525/568 (92%)	503 (96%)	22 (4%)	0	100	100

There are no Ramachandran outliers to report.

### 5.3.2 Protein sidechains ⓘ

In the following table, the Percentiles column shows the percent sidechain outliers of the chain as a percentile score with respect to all X-ray entries followed by that with respect to entries of similar resolution.

The Analysed column shows the number of residues for which the sidechain conformation was analysed, and the total number of residues.

Mol	Chain	Analysed	Rotameric	Outliers	Percentiles	
1	A	225/248 (91%)	225 (100%)	0	100	100
1	B	224/248 (90%)	223 (100%)	1 (0%)	92	96
All	All	449/496 (90%)	448 (100%)	1 (0%)	94	98

All (1) residues with a non-rotameric sidechain are listed below:

Mol	Chain	Res	Type
1	B	387	ARG

Some sidechains can be flipped to improve hydrogen bonding and reduce clashes. There are no such sidechains identified.

### 5.3.3 RNA ⓘ

There are no RNA molecules in this entry.

## 5.4 Non-standard residues in protein, DNA, RNA chains ⓘ

4 non-standard protein/DNA/RNA residues are modelled in this entry.

In the following table, the Counts columns list the number of bonds (or angles) for which Mogul statistics could be retrieved, the number of bonds (or angles) that are observed in the model and

the number of bonds (or angles) that are defined in the Chemical Component Dictionary. The Link column lists molecule types, if any, to which the group is linked. The Z score for a bond length (or angle) is the number of standard deviations the observed value is removed from the expected value. A bond length (or angle) with  $|Z| > 2$  is considered an outlier worth inspection. RMSZ is the root-mean-square of all Z scores of the bond lengths (or angles).

Mol	Type	Chain	Res	Link	Bond lengths			Bond angles		
					Counts	RMSZ	$\# Z  > 2$	Counts	RMSZ	$\# Z  > 2$
1	SEP	A	304	1	9,9,10	1.56	1 (11%)	9,12,14	1.81	2 (22%)
1	SEP	A	308	1	9,9,10	1.65	2 (22%)	9,12,14	1.61	2 (22%)
1	SEP	B	304	1	9,9,10	1.61	2 (22%)	9,12,14	1.54	2 (22%)
1	SEP	B	308	1	9,9,10	1.61	2 (22%)	9,12,14	1.50	2 (22%)

In the following table, the Chirals column lists the number of chiral outliers, the number of chiral centers analysed, the number of these observed in the model and the number defined in the Chemical Component Dictionary. Similar counts are reported in the Torsion and Rings columns. '-' means no outliers of that kind were identified.

Mol	Type	Chain	Res	Link	Chirals	Torsions	Rings
1	SEP	A	304	1	-	0/5/8/10	-
1	SEP	A	308	1	-	3/5/8/10	-
1	SEP	B	304	1	-	1/5/8/10	-
1	SEP	B	308	1	-	1/5/8/10	-

All (7) bond length outliers are listed below:

Mol	Chain	Res	Type	Atoms	Z	Observed(Å)	Ideal(Å)
1	A	304	SEP	P-O1P	3.30	1.61	1.50
1	B	304	SEP	P-O1P	3.28	1.61	1.50
1	A	308	SEP	P-O1P	3.26	1.61	1.50
1	B	308	SEP	P-O1P	3.22	1.61	1.50
1	A	308	SEP	CA-C	2.55	1.53	1.50
1	B	308	SEP	CA-C	2.40	1.53	1.50
1	B	304	SEP	CA-C	2.25	1.53	1.50

All (8) bond angle outliers are listed below:

Mol	Chain	Res	Type	Atoms	Z	Observed(°)	Ideal(°)
1	A	304	SEP	P-OG-CB	-3.59	108.40	118.30
1	A	304	SEP	OG-CB-CA	3.34	111.39	108.14
1	B	304	SEP	P-OG-CB	-3.05	109.89	118.30
1	A	308	SEP	OG-CB-CA	3.00	111.06	108.14
1	A	308	SEP	P-OG-CB	-2.99	110.06	118.30

*Continued on next page...*

Continued from previous page...

Mol	Chain	Res	Type	Atoms	Z	Observed(°)	Ideal(°)
1	B	308	SEP	OG-CB-CA	2.74	110.82	108.14
1	B	308	SEP	P-OG-CB	-2.62	111.07	118.30
1	B	304	SEP	OG-CB-CA	2.44	110.52	108.14

There are no chirality outliers.

All (5) torsion outliers are listed below:

Mol	Chain	Res	Type	Atoms
1	A	308	SEP	CB-OG-P-O1P
1	A	308	SEP	CB-OG-P-O2P
1	A	308	SEP	CB-OG-P-O3P
1	B	308	SEP	CB-OG-P-O1P
1	B	304	SEP	CB-OG-P-O2P

There are no ring outliers.

No monomer is involved in short contacts.

## 5.5 Carbohydrates [i](#)

There are no carbohydrates in this entry.

## 5.6 Ligand geometry [i](#)

Of 7 ligands modelled in this entry, 4 are monoatomic - leaving 3 for Mogul analysis.

In the following table, the Counts columns list the number of bonds (or angles) for which Mogul statistics could be retrieved, the number of bonds (or angles) that are observed in the model and the number of bonds (or angles) that are defined in the Chemical Component Dictionary. The Link column lists molecule types, if any, to which the group is linked. The Z score for a bond length (or angle) is the number of standard deviations the observed value is removed from the expected value. A bond length (or angle) with  $|Z| > 2$  is considered an outlier worth inspection. RMSZ is the root-mean-square of all Z scores of the bond lengths (or angles).

Mol	Type	Chain	Res	Link	Bond lengths			Bond angles		
					Counts	RMSZ	$\# Z  > 2$	Counts	RMSZ	$\# Z  > 2$
2	ANP	A	501	3	28,33,33	1.30	4 (14%)	29,52,52	1.06	2 (6%)
4	EDO	A	504	-	3,3,3	0.49	0	2,2,2	0.34	0
2	ANP	B	501	3	28,33,33	2.79	7 (25%)	29,52,52	1.14	3 (10%)

In the following table, the Chirals column lists the number of chiral outliers, the number of chiral

centers analysed, the number of these observed in the model and the number defined in the Chemical Component Dictionary. Similar counts are reported in the Torsion and Rings columns. '-' means no outliers of that kind were identified.

Mol	Type	Chain	Res	Link	Chirals	Torsions	Rings
2	ANP	A	501	3	-	3/13/38/38	0/3/3/3
4	EDO	A	504	-	-	1/1/1/1	-
2	ANP	B	501	3	-	4/13/38/38	0/3/3/3

All (11) bond length outliers are listed below:

Mol	Chain	Res	Type	Atoms	Z	Observed(Å)	Ideal(Å)
2	B	501	ANP	PG-O1G	10.27	1.58	1.46
2	B	501	ANP	PB-O1B	8.62	1.56	1.46
2	A	501	ANP	PG-O1G	3.34	1.49	1.46
2	A	501	ANP	PB-O1B	3.33	1.49	1.46
2	B	501	ANP	PG-N3B	2.67	1.70	1.63
2	B	501	ANP	PB-O2B	-2.55	1.49	1.56
2	B	501	ANP	PG-O2G	-2.49	1.49	1.56
2	A	501	ANP	PG-N3B	2.48	1.69	1.63
2	A	501	ANP	PB-O3A	-2.35	1.56	1.59
2	B	501	ANP	PB-N3B	2.14	1.69	1.63
2	B	501	ANP	PB-O3A	-2.06	1.56	1.59

All (5) bond angle outliers are listed below:

Mol	Chain	Res	Type	Atoms	Z	Observed(°)	Ideal(°)
2	B	501	ANP	PA-O3A-PB	-3.84	119.02	132.46
2	A	501	ANP	PA-O3A-PB	-3.56	120.00	132.46
2	B	501	ANP	C5-C6-N6	2.25	123.92	120.38
2	A	501	ANP	C5-C6-N6	2.18	123.81	120.38
2	B	501	ANP	O1G-PG-N3B	-2.01	108.78	111.79

There are no chirality outliers.

All (8) torsion outliers are listed below:

Mol	Chain	Res	Type	Atoms
2	A	501	ANP	PB-N3B-PG-O1G
2	A	501	ANP	PG-N3B-PB-O1B
2	B	501	ANP	PB-N3B-PG-O1G
2	B	501	ANP	O4'-C4'-C5'-O5'
4	A	504	EDO	O1-C1-C2-O2
2	B	501	ANP	C4'-C5'-O5'-PA

*Continued on next page...*

*Continued from previous page...*

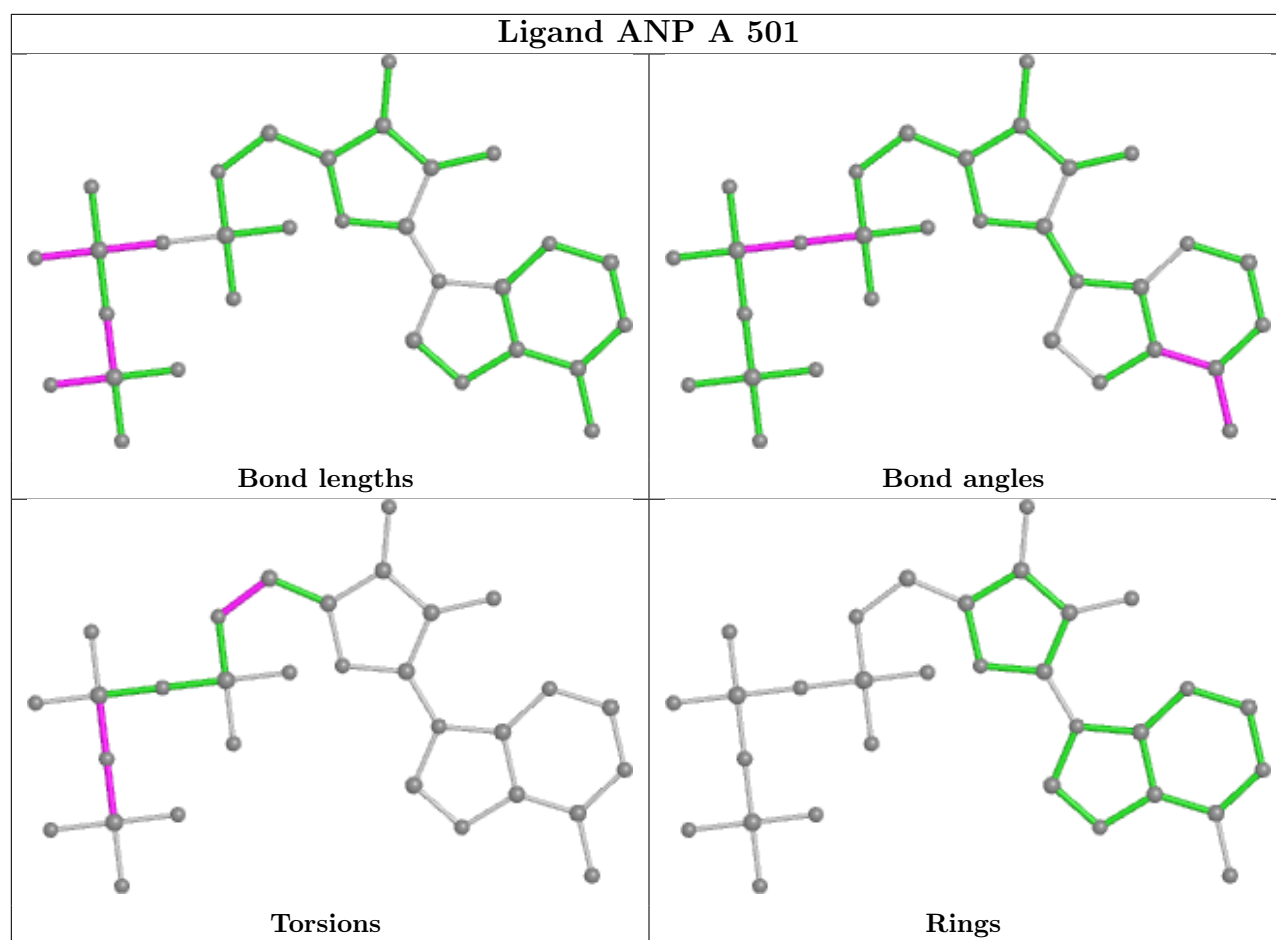
Mol	Chain	Res	Type	Atoms
2	B	501	ANP	PB-O3A-PA-O2A
2	A	501	ANP	C4'-C5'-O5'-PA

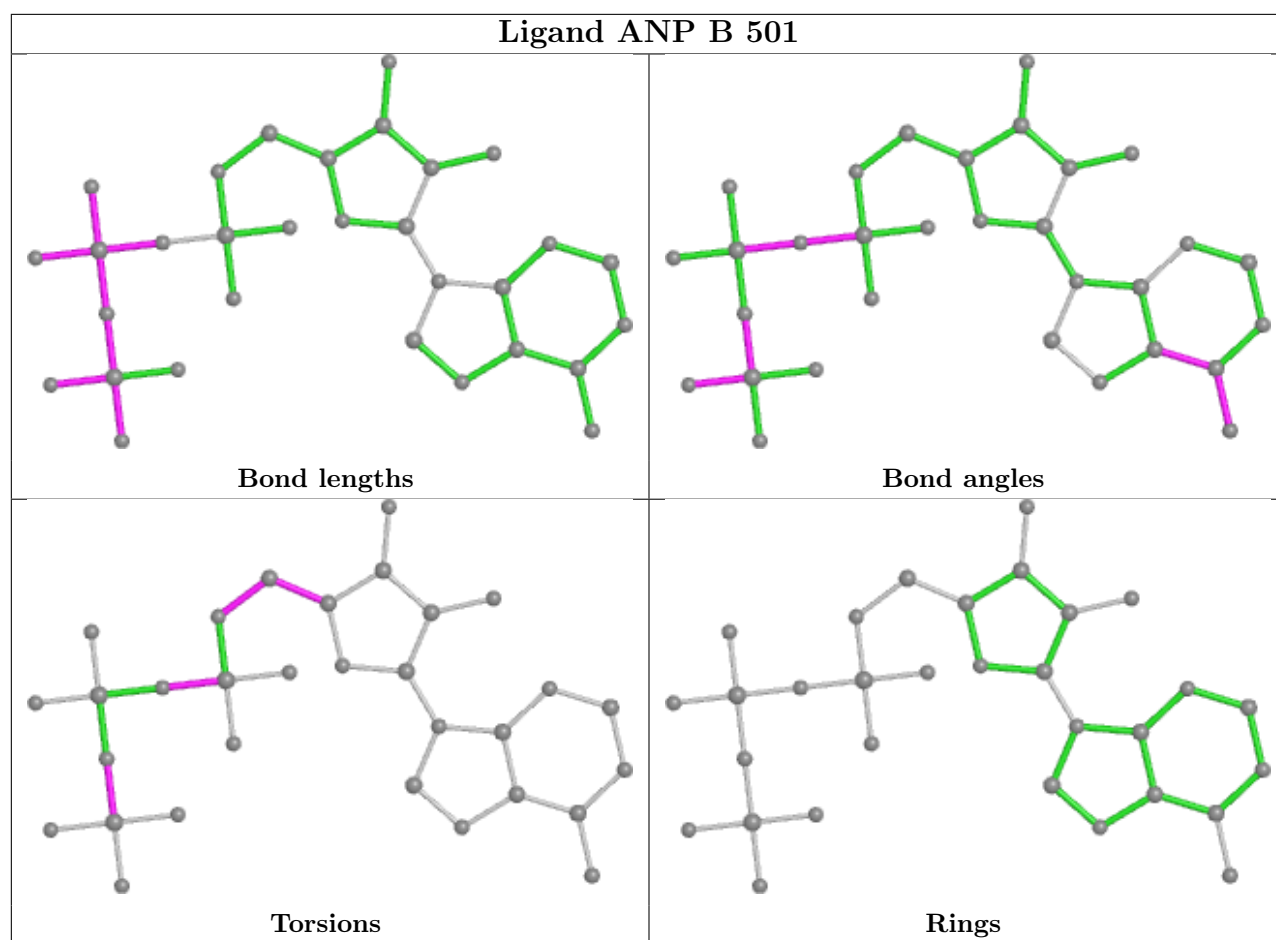
There are no ring outliers.

2 monomers are involved in 2 short contacts:

Mol	Chain	Res	Type	Clashes	Symm-Clashes
2	A	501	ANP	1	0
4	A	504	EDO	1	0

The following is a two-dimensional graphical depiction of Mogul quality analysis of bond lengths, bond angles, torsion angles, and ring geometry for all instances of the Ligand of Interest. In addition, ligands with molecular weight > 250 and outliers as shown on the validation Tables will also be included. For torsion angles, if less than 5% of the Mogul distribution of torsion angles is within 10 degrees of the torsion angle in question, then that torsion angle is considered an outlier. Any bond that is central to one or more torsion angles identified as an outlier by Mogul will be highlighted in the graph. For rings, the root-mean-square deviation (RMSD) between the ring in question and similar rings identified by Mogul is calculated over all ring torsion angles. If the average RMSD is greater than 60 degrees and the minimal RMSD between the ring in question and any Mogul-identified rings is also greater than 60 degrees, then that ring is considered an outlier. The outliers are highlighted in purple. The color gray indicates Mogul did not find sufficient equivalents in the CSD to analyse the geometry.





## 5.7 Other polymers [i](#)

There are no such residues in this entry.

## 5.8 Polymer linkage issues [i](#)

There are no chain breaks in this entry.

## 6 Fit of model and data

### 6.1 Protein, DNA and RNA chains

In the following table, the column labelled ‘#RSRZ > 2’ contains the number (and percentage) of RSRZ outliers, followed by percent RSRZ outliers for the chain as percentile scores relative to all X-ray entries and entries of similar resolution. The OWAB column contains the minimum, median, 95<sup>th</sup> percentile and maximum values of the occupancy-weighted average B-factor per residue. The column labelled ‘Q < 0.9’ lists the number of (and percentage) of residues with an average occupancy less than 0.9.

Mol	Chain	Analysed	<RSRZ>	#RSRZ>2	OWAB(Å <sup>2</sup> )	Q<0.9
1	A	271/284 (95%)	0.65	11 (4%) 37 40	11, 19, 32, 43	0
1	B	265/284 (93%)	0.71	13 (4%) 29 32	12, 20, 31, 37	0
All	All	536/568 (94%)	0.68	24 (4%) 33 35	11, 19, 32, 43	0

All (24) RSRZ outliers are listed below:

Mol	Chain	Res	Type	RSRZ
1	B	362	THR	3.9
1	A	346	TYR	3.4
1	B	195	ALA	3.1
1	B	222	CYS	2.9
1	B	378	VAL	2.9
1	B	413	VAL	2.7
1	B	201	LEU	2.7
1	A	376	PRO	2.7
1	B	197	MET	2.6
1	A	358	TYR	2.6
1	A	135	MET	2.5
1	B	351	CYS	2.4
1	A	215	SER	2.4
1	B	344	SER	2.4
1	B	355	ALA	2.4
1	A	362	THR	2.3
1	A	406	ALA	2.3
1	A	138	VAL	2.1
1	B	380	GLU	2.1
1	A	413	VAL	2.1
1	A	179	GLN	2.1
1	B	406	ALA	2.1
1	B	358	TYR	2.1
1	A	186	ALA	2.0



## 6.2 Non-standard residues in protein, DNA, RNA chains [i](#)

In the following table, the Atoms column lists the number of modelled atoms in the group and the number defined in the chemical component dictionary. The B-factors column lists the minimum, median, 95<sup>th</sup> percentile and maximum values of B factors of atoms in the group. The column labelled 'Q< 0.9' lists the number of atoms with occupancy less than 0.9.

Mol	Type	Chain	Res	Atoms	RSCC	RSR	B-factors(Å <sup>2</sup> )	Q<0.9
1	SEP	B	304	10/11	0.83	0.29	31,35,44,55	0
1	SEP	A	304	10/11	0.86	0.26	27,34,50,54	0
1	SEP	A	308	10/11	0.94	0.17	16,18,28,29	0
1	SEP	B	308	10/11	0.97	0.17	13,15,21,28	0

## 6.3 Carbohydrates [i](#)

There are no carbohydrates in this entry.

## 6.4 Ligands [i](#)

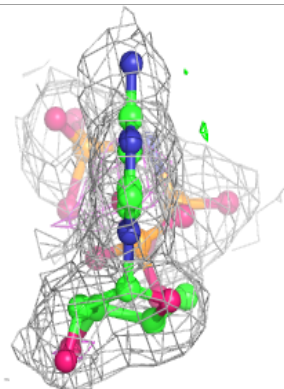
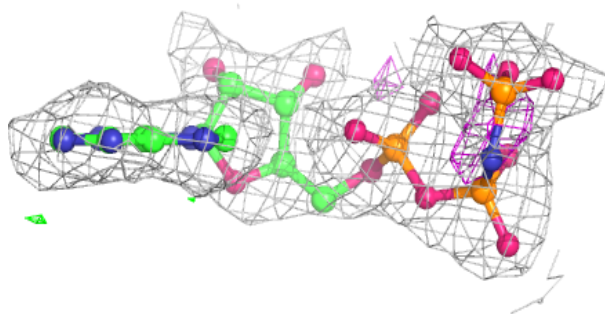
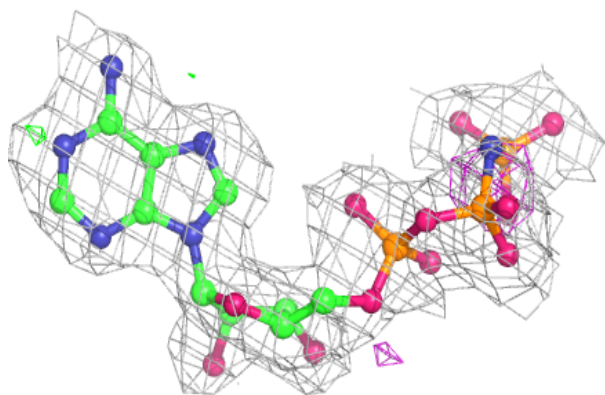
In the following table, the Atoms column lists the number of modelled atoms in the group and the number defined in the chemical component dictionary. The B-factors column lists the minimum, median, 95<sup>th</sup> percentile and maximum values of B factors of atoms in the group. The column labelled 'Q< 0.9' lists the number of atoms with occupancy less than 0.9.

Mol	Type	Chain	Res	Atoms	RSCC	RSR	B-factors(Å <sup>2</sup> )	Q<0.9
4	EDO	A	504	4/4	0.82	0.19	24,26,28,28	0
3	MG	B	503	1/1	0.84	0.13	17,17,17,17	0
3	MG	A	503	1/1	0.91	0.09	21,21,21,21	0
2	ANP	B	501	31/31	0.93	0.15	10,14,20,21	0
3	MG	A	502	1/1	0.95	0.07	11,11,11,11	0
2	ANP	A	501	31/31	0.95	0.16	15,18,22,26	0
3	MG	B	502	1/1	0.96	0.10	15,15,15,15	0

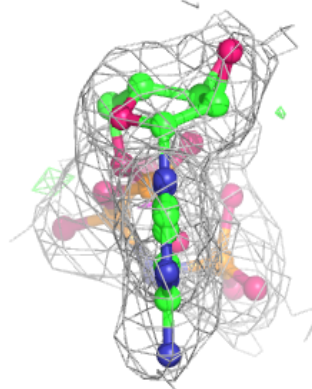
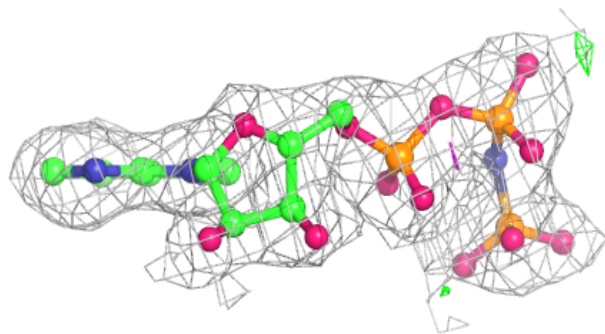
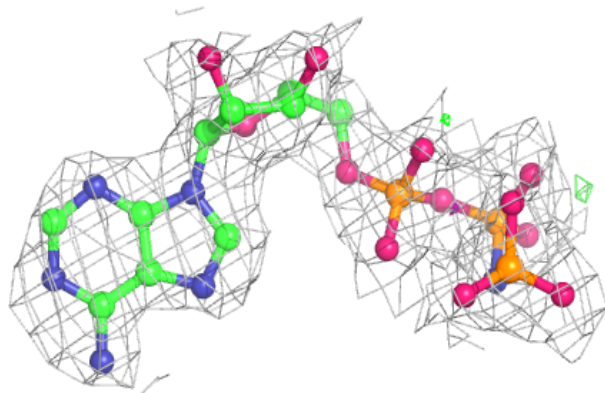
The following is a graphical depiction of the model fit to experimental electron density of all instances of the Ligand of Interest. In addition, ligands with molecular weight > 250 and outliers as shown on the geometry validation Tables will also be included. Each fit is shown from different orientation to approximate a three-dimensional view.

**Electron density around ANP B 501:**

$2mF_o-DF_c$  (at 0.7 rmsd) in gray  
 $mF_o-DF_c$  (at 3 rmsd) in purple (negative)  
and green (positive)

**Electron density around ANP A 501:**

$2mF_o-DF_c$  (at 0.7 rmsd) in gray  
 $mF_o-DF_c$  (at 3 rmsd) in purple (negative)  
and green (positive)



## 6.5 Other polymers [i](#)

There are no such residues in this entry.