



# Full wwPDB X-ray Structure Validation Report ⓘ

Oct 7, 2019 – 01:53 PM EDT

PDB ID : 5O2O  
Title : Lytic transglycosylase in action  
Authors : Williams, A.H.; Hoauz, A.; Boneca, I.G.  
Deposited on : 2017-05-22  
Resolution : 1.43 Å(reported)

This is a Full wwPDB X-ray Structure Validation Report for a publicly released PDB entry.

We welcome your comments at [validation@mail.wwpdb.org](mailto:validation@mail.wwpdb.org)

A user guide is available at

<https://www.wwpdb.org/validation/2017/XrayValidationReportHelp>

with specific help available everywhere you see the ⓘ symbol.

---

The following versions of software and data (see [references ⓘ](#)) were used in the production of this report:

MolProbity : 4.02b-467  
Mogul : 1.8.0 (224370), CSD as540be (2019)  
Xtriage (Phenix) : 1.13  
EDS : 2.4  
Percentile statistics : 20171227.v01 (using entries in the PDB archive December 27th 2017)  
Refmac : 5.8.0158  
CCP4 : 7.0 (Gargrove)  
Ideal geometry (proteins) : Engh & Huber (2001)  
Ideal geometry (DNA, RNA) : Parkinson et al. (1996)  
Validation Pipeline (wwPDB-VP) : 2.4

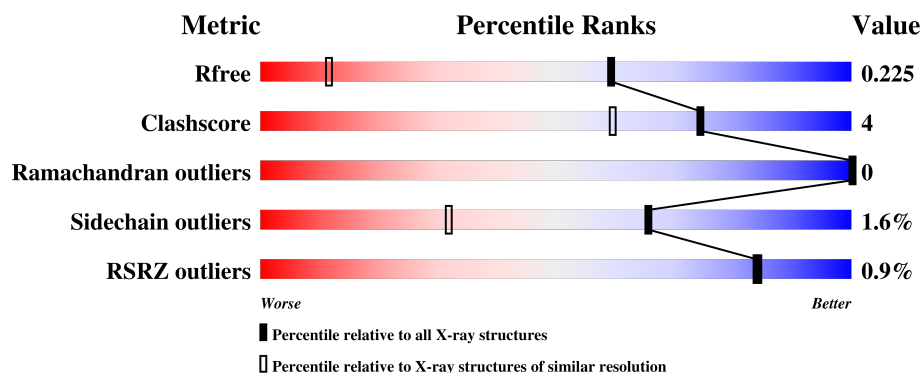
# 1 Overall quality at a glance

The following experimental techniques were used to determine the structure:

*X-RAY DIFFRACTION*

The reported resolution of this entry is 1.43 Å.

Percentile scores (ranging between 0-100) for global validation metrics of the entry are shown in the following graphic. The table shows the number of entries on which the scores are based.



Metric	Whole archive (#Entries)	Similar resolution (#Entries, resolution range(Å))
$R_{free}$	111664	1592 (1.46-1.42)
Clashscore	122126	1643 (1.46-1.42)
Ramachandran outliers	120053	1618 (1.46-1.42)
Sidechain outliers	120020	1618 (1.46-1.42)
RSRZ outliers	108989	1566 (1.46-1.42)

The table below summarises the geometric issues observed across the polymeric chains and their fit to the electron density. The red, orange, yellow and green segments on the lower bar indicate the fraction of residues that contain outliers for  $\geq 3$ , 2, 1 and 0 types of geometric quality criteria. A grey segment represents the fraction of residues that are not modelled. The numeric value for each fraction is indicated below the corresponding segment, with a dot representing fractions  $\leq 5\%$ . The upper red bar (where present) indicates the fraction of residues that have poor fit to the electron density. The numeric value is given above the bar.

Mol	Chain	Length	Quality of chain
1	A	616	<div> <div></div> <div>87%</div> <div>6%</div> <div>6%</div> </div>

## 2 Entry composition [i](#)

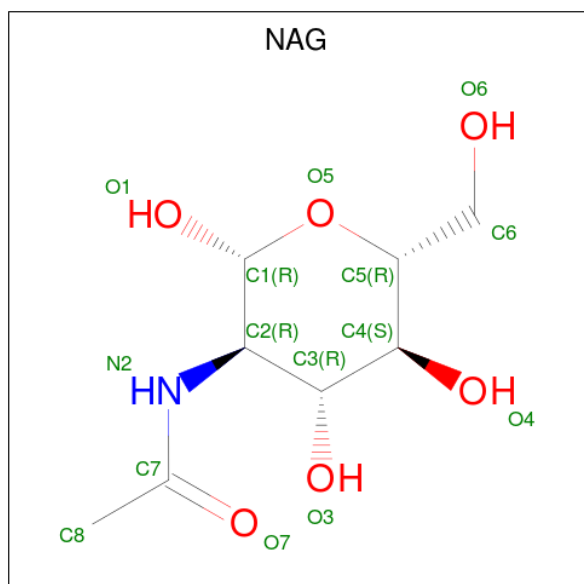
There are 4 unique types of molecules in this entry. The entry contains 5423 atoms, of which 0 are hydrogens and 0 are deuteriums.

In the tables below, the ZeroOcc column contains the number of atoms modelled with zero occupancy, the AltConf column contains the number of residues with at least one atom in alternate conformation and the Trace column contains the number of residues modelled with at most 2 atoms.

- Molecule 1 is a protein called Transglycosylase.

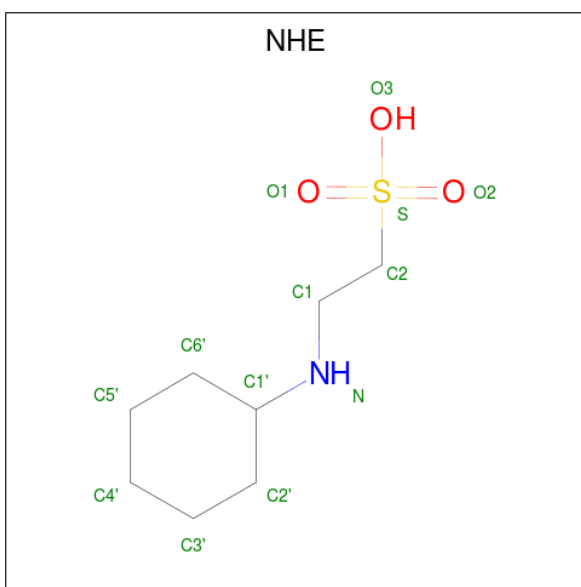
Mol	Chain	Residues	Atoms					ZeroOcc	AltConf	Trace
			Total	C	N	O	S			
1	A	576	4508	2805	838	850	15	0	5	0

- Molecule 2 is N-ACETYL-D-GLUCOSAMINE (three-letter code: NAG) (formula:  $C_8H_{15}NO_6$ ).



Mol	Chain	Residues	Atoms				ZeroOcc	AltConf
			Total	C	N	O		
2	A	1	15	8	1	6	0	0
2	A	1	14	8	1	5	0	0

- Molecule 3 is 2-[N-CYCLOHEXYLAMINO]ETHANE SULFONIC ACID (three-letter code: NHE) (formula:  $C_8H_{17}NO_3S$ ).



Mol	Chain	Residues	Atoms					ZeroOcc	AltConf
3	A	1	Total	C	N	O	S	0	0
			13	8	1	3	1		
3	A	1	Total	C	N	O	S	0	0
			13	8	1	3	1		
3	A	1	Total	C	N	O	S	0	0
			13	8	1	3	1		

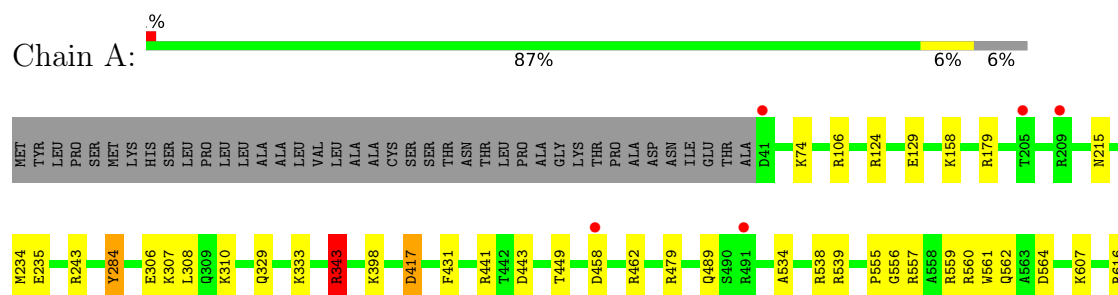
- Molecule 4 is water.

Mol	Chain	Residues	Atoms		ZeroOcc	AltConf
4	A	847	Total	O	0	0
			847	847		

### 3 Residue-property plots [i](#)

These plots are drawn for all protein, RNA and DNA chains in the entry. The first graphic for a chain summarises the proportions of the various outlier classes displayed in the second graphic. The second graphic shows the sequence view annotated by issues in geometry and electron density. Residues are color-coded according to the number of geometric quality criteria for which they contain at least one outlier: green = 0, yellow = 1, orange = 2 and red = 3 or more. A red dot above a residue indicates a poor fit to the electron density ( $RSRZ > 2$ ). Stretches of 2 or more consecutive residues without any outlier are shown as a green connector. Residues present in the sample, but not in the model, are shown in grey.

- Molecule 1: Transglycosylase



## 4 Data and refinement statistics

Property	Value	Source
Space group	P 21 21 21	Depositor
Cell constants a, b, c, $\alpha$ , $\beta$ , $\gamma$	66.71Å 72.68Å 124.92Å 90.00° 90.00° 90.00°	Depositor
Resolution (Å)	49.15 – 1.43 49.15 – 1.43	Depositor EDS
% Data completeness (in resolution range)	97.4 (49.15-1.43) 97.4 (49.15-1.43)	Depositor EDS
$R_{merge}$	(Not available)	Depositor
$R_{sym}$	(Not available)	Depositor
$\langle I/\sigma(I) \rangle$ <sup>1</sup>	1.08 (at 1.43Å)	Xtriage
Refinement program	REFMAC 5.8.0049	Depositor
R, $R_{free}$	0.191 , 0.226 0.190 , 0.225	Depositor DCC
$R_{free}$ test set	2002 reflections (1.82%)	wwPDB-VP
Wilson B-factor (Å <sup>2</sup> )	19.3	Xtriage
Anisotropy	0.235	Xtriage
Bulk solvent $k_{sol}$ (e/Å <sup>3</sup> ), $B_{sol}$ (Å <sup>2</sup> )	0.33 , 37.2	EDS
L-test for twinning <sup>2</sup>	$\langle  L  \rangle = 0.46$ , $\langle L^2 \rangle = 0.29$	Xtriage
Estimated twinning fraction	No twinning to report.	Xtriage
$F_o, F_c$ correlation	0.97	EDS
Total number of atoms	5423	wwPDB-VP
Average B, all atoms (Å <sup>2</sup> )	24.0	wwPDB-VP

Xtriage's analysis on translational NCS is as follows: *The largest off-origin peak in the Patterson function is 4.22% of the height of the origin peak. No significant pseudotranslation is detected.*

<sup>1</sup>Intensities estimated from amplitudes.

<sup>2</sup>Theoretical values of  $\langle |L| \rangle$ ,  $\langle L^2 \rangle$  for acentric reflections are 0.5, 0.333 respectively for untwinned datasets, and 0.375, 0.2 for perfectly twinned datasets.

## 5 Model quality [i](#)

### 5.1 Standard geometry [i](#)

Bond lengths and bond angles in the following residue types are not validated in this section: NHE, NAG

The Z score for a bond length (or angle) is the number of standard deviations the observed value is removed from the expected value. A bond length (or angle) with  $|Z| > 5$  is considered an outlier worth inspection. RMSZ is the root-mean-square of all Z scores of the bond lengths (or angles).

Mol	Chain	Bond lengths		Bond angles	
		RMSZ	$\# Z  > 5$	RMSZ	$\# Z  > 5$
1	A	0.83	1/4607 (0.0%)	0.84	6/6233 (0.1%)

All (1) bond length outliers are listed below:

Mol	Chain	Res	Type	Atoms	Z	Observed(Å)	Ideal(Å)
1	A	343	ARG	CD-NE	-5.27	1.37	1.46

All (6) bond angle outliers are listed below:

Mol	Chain	Res	Type	Atoms	Z	Observed(°)	Ideal(°)
1	A	343	ARG	NE-CZ-NH2	-13.17	113.71	120.30
1	A	343	ARG	NE-CZ-NH1	10.01	125.31	120.30
1	A	557	ARG	NE-CZ-NH2	-6.01	117.29	120.30
1	A	284	TYR	CB-CG-CD2	-5.54	117.68	121.00
1	A	479	ARG	NE-CZ-NH1	5.26	122.93	120.30
1	A	179	ARG	NE-CZ-NH1	5.21	122.91	120.30

There are no chirality outliers.

There are no planarity outliers.

### 5.2 Too-close contacts [i](#)

In the following table, the Non-H and H(model) columns list the number of non-hydrogen atoms and hydrogen atoms in the chain respectively. The H(added) column lists the number of hydrogen atoms added and optimized by MolProbity. The Clashes column lists the number of clashes within the asymmetric unit, whereas Symm-Clashes lists symmetry related clashes.

Mol	Chain	Non-H	H(model)	H(added)	Clashes	Symm-Clashes
1	A	4508	0	4439	31	0

*Continued on next page...*

*Continued from previous page...*

Mol	Chain	Non-H	H(model)	H(added)	Clashes	Symm-Clashes
2	A	29	0	27	5	0
3	A	39	0	47	2	0
4	A	847	0	0	15	6
All	All	5423	0	4513	32	6

The all-atom clashscore is defined as the number of clashes found per 1000 atoms (including hydrogen atoms). The all-atom clashscore for this structure is 4.

All (32) close contacts within the same asymmetric unit are listed below, sorted by their clash magnitude.

Atom-1	Atom-2	Interatomic distance (Å)	Clash overlap (Å)
1:A:616:ARG:O	4:A:801:HOH:O	1.76	1.02
1:A:556:GLY:H	2:A:702:NAG:H81	1.31	0.92
2:A:702:NAG:H82	2:A:702:NAG:O3	1.83	0.78
1:A:556:GLY:H	2:A:702:NAG:C8	2.00	0.74
1:A:564:ASP:OD1	4:A:802:HOH:O	2.05	0.73
1:A:74:LYS:HE3	1:A:106:ARG:HD3	1.71	0.72
1:A:556:GLY:N	2:A:702:NAG:H81	2.07	0.69
1:A:307:LYS:HZ2	1:A:308:LEU:HD13	1.67	0.60
1:A:616:ARG:HG2	4:A:1415:HOH:O	2.02	0.59
1:A:124[A]:ARG:HD2	4:A:853:HOH:O	2.02	0.59
1:A:398:LYS:NZ	4:A:817:HOH:O	2.37	0.57
1:A:417:ASP:OD1	4:A:803:HOH:O	2.17	0.57
1:A:306:GLU:OE2	1:A:310:LYS:NZ	2.37	0.57
1:A:538[A]:ARG:NH1	4:A:814:HOH:O	2.31	0.56
1:A:560:ARG:NH2	1:A:561:TRP:HE1	2.07	0.52
1:A:562:GLN:HB2	1:A:616:ARG:HG3	1.92	0.51
1:A:458:ASP:O	1:A:462:ARG:NH1	2.47	0.48
1:A:559:ARG:NH1	4:A:826:HOH:O	2.42	0.47
1:A:129:GLU:HG2	4:A:804:HOH:O	2.15	0.45
1:A:235:GLU:HG2	1:A:243:ARG:HD2	1.98	0.45
1:A:539:ARG:NH2	4:A:837:HOH:O	2.47	0.45
1:A:555:PRO:HD2	2:A:702:NAG:H83	1.99	0.45
1:A:215:ASN:HD21	1:A:234:MET:HE1	1.82	0.44
1:A:158:LYS:NZ	4:A:843:HOH:O	2.49	0.44
1:A:441:ARG:NH2	4:A:851:HOH:O	2.51	0.43
1:A:129:GLU:HG2	4:A:853:HOH:O	2.18	0.43
1:A:443:ASP:OD1	3:A:703:NHE:H2'1	2.19	0.43
1:A:333:LYS:HE3	4:A:1450:HOH:O	2.19	0.42
1:A:534:ALA:O	1:A:538[A]:ARG:HG3	2.20	0.41
1:A:343:ARG:HD2	3:A:703:NHE:O2	2.21	0.41

*Continued on next page...*



Continued from previous page...

Atom-1	Atom-2	Interatomic distance (Å)	Clash overlap (Å)
1:A:235:GLU:HG2	1:A:243:ARG:CD	2.50	0.41
1:A:329:GLN:OE1	4:A:805:HOH:O	2.22	0.40

All (6) symmetry-related close contacts are listed below. The label for Atom-2 includes the symmetry operator and encoded unit-cell translations to be applied.

Atom-1	Atom-2	Interatomic distance (Å)	Clash overlap (Å)
4:A:1384:HOH:O	4:A:1431:HOH:O[4_545]	1.72	0.48
4:A:1390:HOH:O	4:A:1457:HOH:O[4_555]	1.98	0.22
4:A:912:HOH:O	4:A:1191:HOH:O[3_554]	2.05	0.15
4:A:863:HOH:O	4:A:1164:HOH:O[3_544]	2.15	0.05
4:A:1543:HOH:O	4:A:1617:HOH:O[3_544]	2.19	0.01
4:A:1442:HOH:O	4:A:1528:HOH:O[3_644]	2.19	0.01

## 5.3 Torsion angles [i](#)

### 5.3.1 Protein backbone [i](#)

In the following table, the Percentiles column shows the percent Ramachandran outliers of the chain as a percentile score with respect to all X-ray entries followed by that with respect to entries of similar resolution.

The Analysed column shows the number of residues for which the backbone conformation was analysed, and the total number of residues.

Mol	Chain	Analysed	Favoured	Allowed	Outliers	Percentiles	
1	A	579/616 (94%)	572 (99%)	7 (1%)	0	100	100

There are no Ramachandran outliers to report.

### 5.3.2 Protein sidechains [i](#)

In the following table, the Percentiles column shows the percent sidechain outliers of the chain as a percentile score with respect to all X-ray entries followed by that with respect to entries of similar resolution.

The Analysed column shows the number of residues for which the sidechain conformation was analysed, and the total number of residues.

Mol	Chain	Analysed	Rotameric	Outliers	Percentiles
1	A	446/474 (94%)	438 (98%)	8 (2%)	62 26

All (8) residues with a non-rotameric sidechain are listed below:

Mol	Chain	Res	Type
1	A	284	TYR
1	A	343	ARG
1	A	417	ASP
1	A	431	PHE
1	A	449[A]	THR
1	A	449[B]	THR
1	A	489	GLN
1	A	607	LYS

Some sidechains can be flipped to improve hydrogen bonding and reduce clashes. All (1) such sidechains are listed below:

Mol	Chain	Res	Type
1	A	215	ASN

### 5.3.3 RNA ⓘ

There are no RNA molecules in this entry.

## 5.4 Non-standard residues in protein, DNA, RNA chains ⓘ

2 non-standard protein/DNA/RNA residues are modelled in this entry.

In the following table, the Counts columns list the number of bonds (or angles) for which Mogul statistics could be retrieved, the number of bonds (or angles) that are observed in the model and the number of bonds (or angles) that are defined in the Chemical Component Dictionary. The Link column lists molecule types, if any, to which the group is linked. The Z score for a bond length (or angle) is the number of standard deviations the observed value is removed from the expected value. A bond length (or angle) with  $|Z| > 2$  is considered an outlier worth inspection. RMSZ is the root-mean-square of all Z scores of the bond lengths (or angles).

Mol	Type	Chain	Res	Link	Bond lengths			Bond angles		
					Counts	RMSZ	$\# Z  > 2$	Counts	RMSZ	$\# Z  > 2$
2	NAG	A	701	2	15,15,15	0.77	0	21,21,21	3.34	11 (52%)
2	NAG	A	702	2	14,14,15	0.81	0	17,19,21	2.69	5 (29%)

In the following table, the Chirals column lists the number of chiral outliers, the number of chiral

centers analysed, the number of these observed in the model and the number defined in the Chemical Component Dictionary. Similar counts are reported in the Torsion and Rings columns. '-' means no outliers of that kind were identified.

Mol	Type	Chain	Res	Link	Chirals	Torsions	Rings
2	NAG	A	701	2	-	2/6/26/26	0/1/1/1
2	NAG	A	702	2	-	2/6/23/26	0/1/1/1

There are no bond length outliers.

All (16) bond angle outliers are listed below:

Mol	Chain	Res	Type	Atoms	Z	Observed(°)	Ideal(°)
2	A	702	NAG	C1-O5-C5	8.31	123.49	112.20
2	A	701	NAG	C1-C2-C3	-7.33	100.55	110.54
2	A	701	NAG	O3-C3-C2	7.09	123.88	109.65
2	A	701	NAG	C3-C4-C5	-6.34	98.83	110.23
2	A	701	NAG	C1-C2-N2	-4.43	105.59	110.73
2	A	702	NAG	C1-C2-N2	3.92	117.18	110.49
2	A	701	NAG	O3-C3-C4	3.73	119.01	110.34
2	A	701	NAG	C8-C7-N2	-3.45	110.16	116.10
2	A	702	NAG	O5-C1-C2	-3.24	106.27	111.36
2	A	701	NAG	O7-C7-N2	3.05	127.64	121.95
2	A	701	NAG	C3-C2-N2	3.02	116.34	110.58
2	A	701	NAG	O1-C1-C2	2.69	114.81	109.22
2	A	701	NAG	C4-C3-C2	-2.61	106.47	110.35
2	A	702	NAG	O3-C3-C4	-2.28	105.06	110.34
2	A	702	NAG	O4-C4-C5	2.12	114.60	109.29
2	A	701	NAG	C1-O5-C5	2.02	117.55	113.68

There are no chirality outliers.

All (4) torsion outliers are listed below:

Mol	Chain	Res	Type	Atoms
2	A	702	NAG	C8-C7-N2-C2
2	A	702	NAG	O7-C7-N2-C2
2	A	701	NAG	O5-C5-C6-O6
2	A	701	NAG	C4-C5-C6-O6

There are no ring outliers.

1 monomer is involved in 5 short contacts:

Mol	Chain	Res	Type	Clashes	Symm-Clashes
2	A	702	NAG	5	0

## 5.5 Carbohydrates [i](#)

There are no carbohydrates in this entry.

## 5.6 Ligand geometry [i](#)

5 ligands are modelled in this entry.

In the following table, the Counts columns list the number of bonds (or angles) for which Mogul statistics could be retrieved, the number of bonds (or angles) that are observed in the model and the number of bonds (or angles) that are defined in the Chemical Component Dictionary. The Link column lists molecule types, if any, to which the group is linked. The Z score for a bond length (or angle) is the number of standard deviations the observed value is removed from the expected value. A bond length (or angle) with  $|Z| > 2$  is considered an outlier worth inspection. RMSZ is the root-mean-square of all Z scores of the bond lengths (or angles).

Mol	Type	Chain	Res	Link	Bond lengths			Bond angles		
					Counts	RMSZ	# $ Z  > 2$	Counts	RMSZ	# $ Z  > 2$
2	NAG	A	701	2	15,15,15	0.77	0	21,21,21	3.34	11 (52%)
2	NAG	A	702	2	14,14,15	0.81	0	17,19,21	2.69	5 (29%)
3	NHE	A	703	-	13,13,13	1.52	2 (15%)	16,17,17	2.82	3 (18%)
3	NHE	A	704	-	13,13,13	2.05	2 (15%)	16,17,17	2.64	8 (50%)
3	NHE	A	705	-	13,13,13	1.68	2 (15%)	16,17,17	2.50	9 (56%)

In the following table, the Chirals column lists the number of chiral outliers, the number of chiral centers analysed, the number of these observed in the model and the number defined in the Chemical Component Dictionary. Similar counts are reported in the Torsion and Rings columns. '-' means no outliers of that kind were identified.

Mol	Type	Chain	Res	Link	Chirals	Torsions	Rings
2	NAG	A	701	2	-	2/6/26/26	0/1/1/1
2	NAG	A	702	2	-	2/6/23/26	0/1/1/1
3	NHE	A	703	-	-	1/7/15/15	0/1/1/1
3	NHE	A	704	-	-	1/7/15/15	0/1/1/1
3	NHE	A	705	-	-	2/7/15/15	0/1/1/1

All (6) bond length outliers are listed below:

Mol	Chain	Res	Type	Atoms	Z	Observed(Å)	Ideal(Å)
3	A	704	NHE	O2-S	6.22	1.63	1.45
3	A	705	NHE	O3-S	4.27	1.62	1.47
3	A	705	NHE	C2-S	-3.92	1.71	1.77
3	A	703	NHE	O1-S	3.91	1.56	1.45

*Continued on next page...*

*Continued from previous page...*

Mol	Chain	Res	Type	Atoms	Z	Observed(Å)	Ideal(Å)
3	A	704	NHE	C2-S	-3.01	1.73	1.77
3	A	703	NHE	C2-S	-2.90	1.73	1.77

All (36) bond angle outliers are listed below:

Mol	Chain	Res	Type	Atoms	Z	Observed(°)	Ideal(°)
2	A	702	NAG	C1-O5-C5	8.31	123.49	112.20
3	A	703	NHE	O1-S-C2	7.74	116.23	106.92
2	A	701	NAG	C1-C2-C3	-7.33	100.55	110.54
2	A	701	NAG	O3-C3-C2	7.09	123.88	109.65
3	A	704	NHE	C6'-C1'-C2'	6.74	122.78	110.84
3	A	703	NHE	C6'-C1'-C2'	6.50	122.36	110.84
2	A	701	NAG	C3-C4-C5	-6.34	98.83	110.23
3	A	705	NHE	C6'-C1'-C2'	4.85	119.44	110.84
2	A	701	NAG	C1-C2-N2	-4.43	105.59	110.73
3	A	705	NHE	O2-S-C2	4.17	111.94	106.92
2	A	702	NAG	C1-C2-N2	3.92	117.18	110.49
2	A	701	NAG	O3-C3-C4	3.73	119.01	110.34
3	A	704	NHE	O2-S-C2	3.67	111.33	106.92
2	A	701	NAG	C8-C7-N2	-3.45	110.16	116.10
2	A	702	NAG	O5-C1-C2	-3.24	106.27	111.36
3	A	704	NHE	O1-S-C2	3.19	110.76	106.92
3	A	705	NHE	O1-S-C2	3.19	110.76	106.92
3	A	704	NHE	C3'-C2'-C1'	3.15	117.11	111.11
2	A	701	NAG	O7-C7-N2	3.05	127.64	121.95
2	A	701	NAG	C3-C2-N2	3.02	116.34	110.58
3	A	704	NHE	O3-S-C2	2.96	110.56	105.77
3	A	705	NHE	O3-S-C2	2.79	110.28	105.77
3	A	705	NHE	C4'-C3'-C2'	2.78	117.13	111.42
2	A	701	NAG	O1-C1-C2	2.69	114.81	109.22
2	A	701	NAG	C4-C3-C2	-2.61	106.47	110.35
3	A	704	NHE	C1-N-C1'	2.60	119.23	114.14
3	A	704	NHE	O2-S-O1	-2.58	105.02	113.95
3	A	705	NHE	O2-S-O1	-2.51	105.25	113.95
3	A	705	NHE	O3-S-O1	-2.50	105.17	111.27
3	A	705	NHE	C2'-C1'-N	2.46	121.10	110.57
2	A	702	NAG	O3-C3-C4	-2.28	105.06	110.34
3	A	703	NHE	C2'-C1'-N	2.18	119.88	110.57
2	A	702	NAG	O4-C4-C5	2.12	114.60	109.29
3	A	705	NHE	C6'-C1'-N	2.06	119.38	110.57
3	A	704	NHE	C2'-C1'-N	2.04	119.30	110.57
2	A	701	NAG	C1-O5-C5	2.02	117.55	113.68

There are no chirality outliers.

All (8) torsion outliers are listed below:

Mol	Chain	Res	Type	Atoms
3	A	705	NHE	C6'-C1'-N-C1
3	A	705	NHE	N-C1-C2-S
3	A	704	NHE	C2'-C1'-N-C1
2	A	702	NAG	C8-C7-N2-C2
2	A	702	NAG	O7-C7-N2-C2
2	A	701	NAG	O5-C5-C6-O6
3	A	703	NHE	C2'-C1'-N-C1
2	A	701	NAG	C4-C5-C6-O6

There are no ring outliers.

2 monomers are involved in 7 short contacts:

Mol	Chain	Res	Type	Clashes	Symm-Clashes
2	A	702	NAG	5	0
3	A	703	NHE	2	0

## 5.7 Other polymers [i](#)

There are no such residues in this entry.

## 5.8 Polymer linkage issues [i](#)

There are no chain breaks in this entry.

## 6 Fit of model and data [i](#)

### 6.1 Protein, DNA and RNA chains [i](#)

In the following table, the column labelled ‘#RSRZ> 2’ contains the number (and percentage) of RSRZ outliers, followed by percent RSRZ outliers for the chain as percentile scores relative to all X-ray entries and entries of similar resolution. The OWAB column contains the minimum, median, 95<sup>th</sup> percentile and maximum values of the occupancy-weighted average B-factor per residue. The column labelled ‘Q< 0.9’ lists the number of (and percentage) of residues with an average occupancy less than 0.9.

Mol	Chain	Analysed	<RSRZ>	#RSRZ>2	OWAB(Å <sup>2</sup> )	Q<0.9
1	A	576/616 (93%)	-0.15	5 (0%) 84 84	13, 21, 36, 64	0

All (5) RSRZ outliers are listed below:

Mol	Chain	Res	Type	RSRZ
1	A	205	THR	3.5
1	A	491	ARG	3.2
1	A	41	ASP	3.2
1	A	458	ASP	2.2
1	A	209	ARG	2.1

### 6.2 Non-standard residues in protein, DNA, RNA chains [i](#)

In the following table, the Atoms column lists the number of modelled atoms in the group and the number defined in the chemical component dictionary. The B-factors column lists the minimum, median, 95<sup>th</sup> percentile and maximum values of B factors of atoms in the group. The column labelled ‘Q< 0.9’ lists the number of atoms with occupancy less than 0.9.

Mol	Type	Chain	Res	Atoms	RSCC	RSR	B-factors(Å <sup>2</sup> )	Q<0.9
2	NAG	A	702	14/15	0.56	0.37	28,51,56,62	0
2	NAG	A	701	15/15	0.81	0.29	22,38,49,50	0

### 6.3 Carbohydrates [i](#)

There are no carbohydrates in this entry.

### 6.4 Ligands [i](#)

In the following table, the Atoms column lists the number of modelled atoms in the group and the number defined in the chemical component dictionary. The B-factors column lists the minimum,

median, 95<sup>th</sup> percentile and maximum values of B factors of atoms in the group. The column labelled 'Q< 0.9' lists the number of atoms with occupancy less than 0.9.

Mol	Type	Chain	Res	Atoms	RSCC	RSR	B-factors(Å <sup>2</sup> )	Q<0.9
2	NAG	A	702	14/15	0.56	0.37	28,51,56,62	0
3	NHE	A	705	13/13	0.77	0.21	30,38,58,60	0
2	NAG	A	701	15/15	0.81	0.29	22,38,49,50	0
3	NHE	A	704	13/13	0.86	0.26	25,36,41,46	0
3	NHE	A	703	13/13	0.98	0.09	21,37,50,55	0

## 6.5 Other polymers [i](#)

There are no such residues in this entry.