



Full wwPDB X-ray Structure Validation Report ⓘ

May 8, 2018 – 01:52 PM EDT

PDB ID : 5OS7
Title : The crystal structure of CK2alpha in complex with compound 4
Authors : Brear, P.; De Fusco, C.; Iegre, J.; Yoshida, M.; Mitchell, S.; Rossmann, M.; Carro, L.; Sore, H.; Hyvonen, M.; Spring, D.
Deposited on : 2017-08-17
Resolution : 1.66 Å(reported)

This is a Full wwPDB X-ray Structure Validation Report for a publicly released PDB entry.

We welcome your comments at validation@mail.wwpdb.org

A user guide is available at

<https://www.wwpdb.org/validation/2017/XrayValidationReportHelp>

with specific help available everywhere you see the ⓘ symbol.

The following versions of software and data (see [references ⓘ](#)) were used in the production of this report:

MolProbity : 4.02b-467
Mogul : 1.7.3 (157068), CSD as539be (2018)
Xtriage (Phenix) : 1.13
EDS : rb-20031172
Percentile statistics : 20171227.v01 (using entries in the PDB archive December 27th 2017)
Refmac : 5.8.0158
CCP4 : 7.0 (Gargrove)
Ideal geometry (proteins) : Engh & Huber (2001)
Ideal geometry (DNA, RNA) : Parkinson et al. (1996)
Validation Pipeline (wwPDB-VP) : rb-20031172

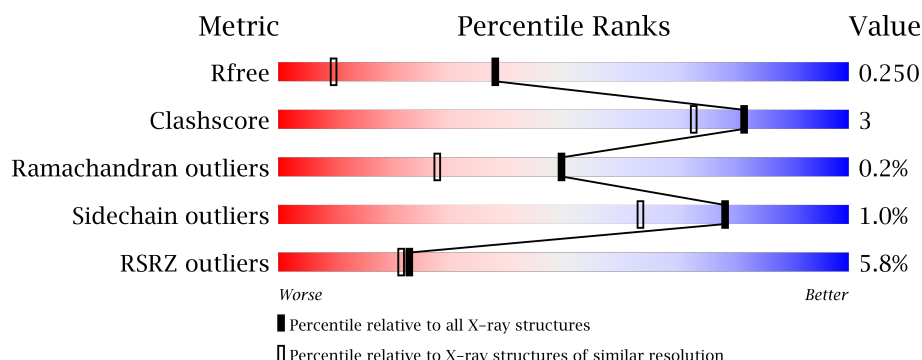
1 Overall quality at a glance

The following experimental techniques were used to determine the structure:

X-RAY DIFFRACTION



The reported resolution of this entry is 1.66 Å.

Percentile scores (ranging between 0-100) for global validation metrics of the entry are shown in the following graphic. The table shows the number of entries on which the scores are based.



Metric	Whole archive (#Entries)	Similar resolution (#Entries, resolution range(Å))
R_{free}	111664	1521 (1.66-1.66)
Clashscore	122126	1616 (1.66-1.66)
Ramachandran outliers	120053	1584 (1.66-1.66)
Sidechain outliers	120020	1584 (1.66-1.66)
RSRZ outliers	108989	1487 (1.66-1.66)

The table below summarises the geometric issues observed across the polymeric chains and their fit to the electron density. The red, orange, yellow and green segments on the lower bar indicate the fraction of residues that contain outliers for ≥ 3 , 2, 1 and 0 types of geometric quality criteria. A grey segment represents the fraction of residues that are not modelled. The numeric value for each fraction is indicated below the corresponding segment, with a dot representing fractions $\leq 5\%$. The upper red bar (where present) indicates the fraction of residues that have poor fit to the electron density. The numeric value is given above the bar.

Mol	Chain	Length	Quality of chain
1	A	352	 4% 88% 7%
1	B	352	 7% 84% 8% 8%

2 Entry composition [i](#)

There are 5 unique types of molecules in this entry. The entry contains 6053 atoms, of which 0 are hydrogens and 0 are deuteriums.

In the tables below, the ZeroOcc column contains the number of atoms modelled with zero occupancy, the AltConf column contains the number of residues with at least one atom in alternate conformation and the Trace column contains the number of residues modelled with at most 2 atoms.

- Molecule 1 is a protein called Casein kinase II subunit alpha.

Mol	Chain	Residues	Atoms					ZeroOcc	AltConf	Trace
1	B	325	Total	C	N	O	S	0	3	0
			2767	1772	486	498	11			
1	A	326	Total	C	N	O	S	0	3	0
			2774	1777	487	499	11			

There are 50 discrepancies between the modelled and reference sequences:

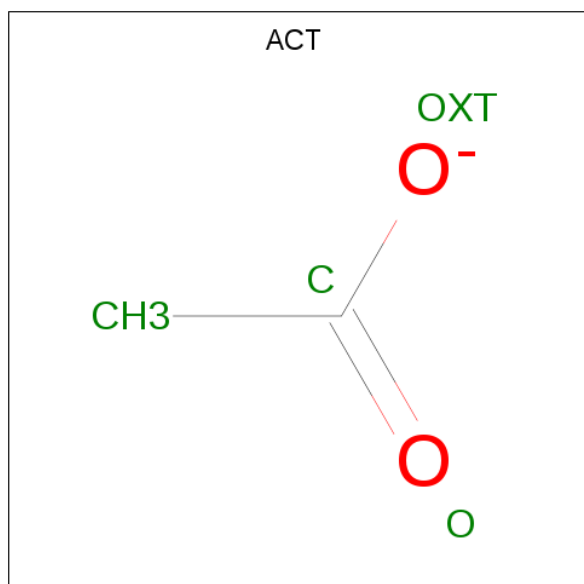
Chain	Residue	Modelled	Actual	Comment	Reference
B	-22	GLY	-	expression tag	UNP P68400
B	-21	SER	-	expression tag	UNP P68400
B	-20	MET	-	expression tag	UNP P68400
B	-19	ASP	-	expression tag	UNP P68400
B	-18	ILE	-	expression tag	UNP P68400
B	-17	GLU	-	expression tag	UNP P68400
B	-16	PHE	-	expression tag	UNP P68400
B	-15	ASP	-	expression tag	UNP P68400
B	-14	ASP	-	expression tag	UNP P68400
B	-13	ASP	-	expression tag	UNP P68400
B	-12	ALA	-	expression tag	UNP P68400
B	-11	ASP	-	expression tag	UNP P68400
B	-10	ASP	-	expression tag	UNP P68400
B	-9	ASP	-	expression tag	UNP P68400
B	-8	GLY	-	expression tag	UNP P68400
B	-7	SER	-	expression tag	UNP P68400
B	-6	GLY	-	expression tag	UNP P68400
B	-5	SER	-	expression tag	UNP P68400
B	-4	GLY	-	expression tag	UNP P68400
B	-3	SER	-	expression tag	UNP P68400
B	-2	GLY	-	expression tag	UNP P68400
B	-1	SER	-	expression tag	UNP P68400
B	0	GLY	-	expression tag	UNP P68400
B	1	SER	-	expression tag	UNP P68400
B	21	SER	ARG	engineered mutation	UNP P68400

Continued on next page...

Continued from previous page...

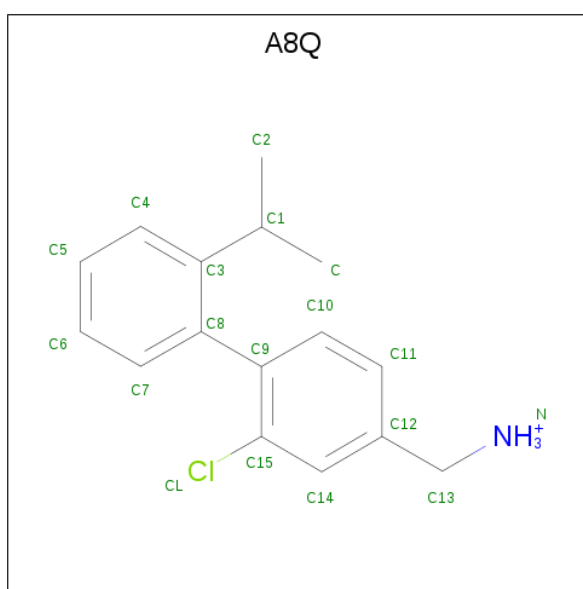
Chain	Residue	Modelled	Actual	Comment	Reference
A	-22	GLY	-	expression tag	UNP P68400
A	-21	SER	-	expression tag	UNP P68400
A	-20	MET	-	expression tag	UNP P68400
A	-19	ASP	-	expression tag	UNP P68400
A	-18	ILE	-	expression tag	UNP P68400
A	-17	GLU	-	expression tag	UNP P68400
A	-16	PHE	-	expression tag	UNP P68400
A	-15	ASP	-	expression tag	UNP P68400
A	-14	ASP	-	expression tag	UNP P68400
A	-13	ASP	-	expression tag	UNP P68400
A	-12	ALA	-	expression tag	UNP P68400
A	-11	ASP	-	expression tag	UNP P68400
A	-10	ASP	-	expression tag	UNP P68400
A	-9	ASP	-	expression tag	UNP P68400
A	-8	GLY	-	expression tag	UNP P68400
A	-7	SER	-	expression tag	UNP P68400
A	-6	GLY	-	expression tag	UNP P68400
A	-5	SER	-	expression tag	UNP P68400
A	-4	GLY	-	expression tag	UNP P68400
A	-3	SER	-	expression tag	UNP P68400
A	-2	GLY	-	expression tag	UNP P68400
A	-1	SER	-	expression tag	UNP P68400
A	0	GLY	-	expression tag	UNP P68400
A	1	SER	-	expression tag	UNP P68400
A	21	SER	ARG	engineered mutation	UNP P68400

- Molecule 2 is ACETATE ION (three-letter code: ACT) (formula: $C_2H_3O_2$).



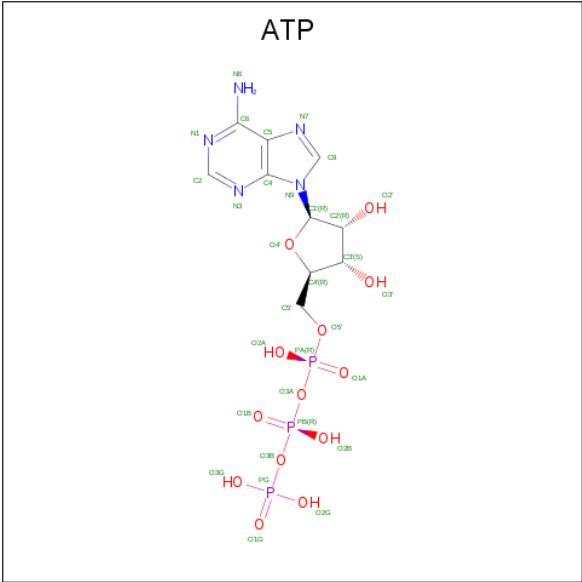
Mol	Chain	Residues	Atoms	ZeroOcc	AltConf
2	B	1	Total C O 4 2 2	0	0
2	A	1	Total C O 4 2 2	0	0
2	A	1	Total C O 4 2 2	0	0
2	A	1	Total C O 4 2 2	0	0

- Molecule 3 is [3-chloranyl-4-(2-propan-2-ylphenyl)phenyl]methyazanum (three-letter code: A8Q) (formula: C₁₆H₁₉ClN).



Mol	Chain	Residues	Atoms	ZeroOcc	AltConf
3	B	1	Total C Cl N 18 16 1 1	0	0
3	A	1	Total C Cl N 18 16 1 1	0	0
3	A	1	Total C Cl N 18 16 1 1	0	0

- Molecule 4 is ADENOSINE-5'-TRIPHOSPHATE (three-letter code: ATP) (formula: C₁₀H₁₆N₅O₁₃P₃).

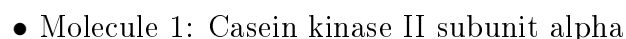


Mol	Chain	Residues	Atoms				ZeroOcc	AltConf
4	B	1	Total	C	N	O	0	0
			19	10	5	4		
4	A	1	Total	C	N	O	0	0
			18	10	5	3		

- Molecule 5 is water.

Mol	Chain	Residues	Atoms		ZeroOcc	AltConf
5	B	166	Total	O	0	0
			166	166		
5	A	239	Total	O	0	0
			239	239		

- Molecule 1: Casein kinase II subunit alpha



4 Data and refinement statistics

Property	Value	Source
Space group	C 2 2 21	Depositor
Cell constants a, b, c, α , β , γ	64.74Å 68.84Å 333.26Å 90.00° 90.00° 90.00°	Depositor
Resolution (Å)	55.54 – 1.66 47.16 – 1.66	Depositor EDS
% Data completeness (in resolution range)	99.3 (55.54-1.66) 99.3 (47.16-1.66)	Depositor EDS
R_{merge}	0.13	Depositor
R_{sym}	(Not available)	Depositor
$\langle I/\sigma(I) \rangle$ ¹	1.93 (at 1.66Å)	Xtriage
Refinement program	BUSTER 2.10.1	Depositor
R, R_{free}	0.221 , 0.247 0.230 , 0.250	Depositor DCC
R_{free} test set	4463 reflections (5.08%)	wwPDB-VP
Wilson B-factor (Å ²)	15.4	Xtriage
Anisotropy	0.660	Xtriage
Bulk solvent k_{sol} (e/Å ³), B_{sol} (Å ²)	0.32 , 26.0	EDS
L-test for twinning ²	$\langle L \rangle = 0.44$, $\langle L^2 \rangle = 0.27$	Xtriage
Estimated twinning fraction	No twinning to report.	Xtriage
F_o, F_c correlation	0.93	EDS
Total number of atoms	6053	wwPDB-VP
Average B, all atoms (Å ²)	25.0	wwPDB-VP

Xtriage's analysis on translational NCS is as follows: *The largest off-origin peak in the Patterson function is 5.59% of the height of the origin peak. No significant pseudotranslation is detected.*

¹Intensities estimated from amplitudes.

²Theoretical values of $\langle |L| \rangle$, $\langle L^2 \rangle$ for acentric reflections are 0.5, 0.333 respectively for untwinned datasets, and 0.375, 0.2 for perfectly twinned datasets.

5 Model quality

5.1 Standard geometry

Bond lengths and bond angles in the following residue types are not validated in this section: A8Q, ATP, ACT

The Z score for a bond length (or angle) is the number of standard deviations the observed value is removed from the expected value. A bond length (or angle) with $|Z| > 5$ is considered an outlier worth inspection. RMSZ is the root-mean-square of all Z scores of the bond lengths (or angles).

Mol	Chain	Bond lengths		Bond angles	
		RMSZ	$\# Z > 5$	RMSZ	$\# Z > 5$
1	A	0.60	0/2849	0.65	0/3855
1	B	0.56	0/2842	0.64	0/3845
All	All	0.58	0/5691	0.64	0/7700

There are no bond length outliers.

There are no bond angle outliers.

There are no chirality outliers.

There are no planarity outliers.

5.2 Too-close contacts

In the following table, the Non-H and H(model) columns list the number of non-hydrogen atoms and hydrogen atoms in the chain respectively. The H(added) column lists the number of hydrogen atoms added and optimized by MolProbity. The Clashes column lists the number of clashes within the asymmetric unit, whereas Symm-Clashes lists symmetry related clashes.

Mol	Chain	Non-H	H(model)	H(added)	Clashes	Symm-Clashes
1	A	2774	0	2713	11	0
1	B	2767	0	2704	20	0
2	A	12	0	9	0	0
2	B	4	0	3	0	0
3	A	36	0	0	0	0
3	B	18	0	0	0	0
4	A	18	0	10	1	0
4	B	19	0	12	2	0
5	A	239	0	0	1	1
5	B	166	0	0	2	0
All	All	6053	0	5451	31	1

The all-atom clashscore is defined as the number of clashes found per 1000 atoms (including hydrogen atoms). The all-atom clashscore for this structure is 3.

All (31) close contacts within the same asymmetric unit are listed below, sorted by their clash magnitude.

Atom-1	Atom-2	Interatomic distance (Å)	Clash overlap (Å)
1:B:133:ILE:HG12	1:B:225:MET:HG2	1.84	0.57
1:A:10:ARG:HD2	1:A:310:GLN:O	2.05	0.56
1:B:10:ARG:HD2	1:B:310:GLN:O	2.07	0.55
1:A:124:LEU:O	1:A:128:LEU:HG	2.07	0.55
1:B:228:ARG:HG2	1:B:289:ASN:HB3	1.89	0.53
1:B:102:LYS:HD3	5:A:645:HOH:O	2.08	0.53
1:B:251:THR:HB	1:B:255:TYR:CE2	2.46	0.51
1:A:121:PHE:CD1	1:A:121:PHE:C	2.85	0.50
1:B:228:ARG:HD3	1:B:288:GLU:HB3	1.94	0.49
1:A:258:ILE:HD11	1:A:265:LEU:HD13	1.95	0.48
1:A:46:GLY:HA3	4:A:406:ATP:H4'	1.94	0.48
1:A:121:PHE:HD1	1:A:121:PHE:C	2.17	0.48
1:B:118:ASN:HD22	1:B:164:ILE:H	1.61	0.48
1:B:43:ARG:HD3	5:B:637:HOH:O	2.14	0.47
1:A:118:ASN:HD22	1:A:164:ILE:H	1.62	0.46
1:A:303:LYS:HB3	1:A:313:LEU:HG	1.97	0.46
1:B:133:ILE:HG12	1:B:225:MET:CG	2.46	0.45
1:B:251:THR:O	1:B:255:TYR:CD2	2.69	0.45
1:B:303:LYS:HB3	1:B:313:LEU:HG	1.99	0.45
1:B:266:ASP:OD1	1:B:267:PRO:HD2	2.17	0.45
1:B:17:THR:HG22	5:B:554:HOH:O	2.15	0.44
1:B:53:VAL:HG21	4:B:403:ATP:O4'	2.18	0.44
1:B:269:PHE:HB3	1:B:273:LEU:HD12	2.00	0.43
1:A:121:PHE:HD1	1:A:121:PHE:O	2.00	0.43
1:B:266:ASP:HA	1:B:267:PRO:HD3	1.83	0.43
1:B:251:THR:HB	1:B:255:TYR:HE2	1.83	0.42
1:B:22:GLU:CD	1:B:22:GLU:H	2.24	0.41
1:B:66:VAL:HG21	4:B:403:ATP:C6	2.55	0.41
1:A:22:GLU:CD	1:A:22:GLU:H	2.24	0.41
1:A:33:TRP:CZ3	1:A:100:ILE:HG22	2.55	0.41
1:B:155:ARG:CZ	1:B:192:VAL:HG11	2.52	0.40

All (1) symmetry-related close contacts are listed below. The label for Atom-2 includes the symmetry operator and encoded unit-cell translations to be applied.

Atom-1	Atom-2	Interatomic distance (Å)	Clash overlap (Å)
5:A:501:HOH:O	5:A:501:HOH:O[4_597]	0.58	1.62

5.3 Torsion angles [i](#)

5.3.1 Protein backbone [i](#)

In the following table, the Percentiles column shows the percent Ramachandran outliers of the chain as a percentile score with respect to all X-ray entries followed by that with respect to entries of similar resolution.

The Analysed column shows the number of residues for which the backbone conformation was analysed, and the total number of residues.

Mol	Chain	Analysed	Favoured	Allowed	Outliers	Percentiles	
1	A	327/352 (93%)	320 (98%)	6 (2%)	1 (0%)	43	22
1	B	326/352 (93%)	318 (98%)	8 (2%)	0	100	100
All	All	653/704 (93%)	638 (98%)	14 (2%)	1 (0%)	49	28

All (1) Ramachandran outliers are listed below:

Mol	Chain	Res	Type
1	A	193	ALA

5.3.2 Protein sidechains [i](#)

In the following table, the Percentiles column shows the percent sidechain outliers of the chain as a percentile score with respect to all X-ray entries followed by that with respect to entries of similar resolution.

The Analysed column shows the number of residues for which the sidechain conformation was analysed, and the total number of residues.

Mol	Chain	Analysed	Rotameric	Outliers	Percentiles	
1	A	303/319 (95%)	300 (99%)	3 (1%)	78	63
1	B	302/319 (95%)	299 (99%)	3 (1%)	78	63
All	All	605/638 (95%)	599 (99%)	6 (1%)	78	63

All (6) residues with a non-rotameric sidechain are listed below:

Mol	Chain	Res	Type
1	B	21	SER
1	B	121	PHE
1	B	258	ILE
1	A	22	GLU
1	A	121	PHE
1	A	125	TYR

Some sidechains can be flipped to improve hydrogen bonding and reduce clashes. All (10) such sidechains are listed below:

Mol	Chain	Res	Type
1	B	118	ASN
1	B	160	HIS
1	B	262	ASN
1	B	286	HIS
1	A	118	ASN
1	A	126	GLN
1	A	168	HIS
1	A	236	HIS
1	A	262	ASN
1	A	270	ASN

5.3.3 RNA [i](#)

There are no RNA molecules in this entry.

5.4 Non-standard residues in protein, DNA, RNA chains [i](#)

There are no non-standard protein/DNA/RNA residues in this entry.

5.5 Carbohydrates [i](#)

There are no carbohydrates in this entry.

5.6 Ligand geometry [i](#)

9 ligands are modelled in this entry.

In the following table, the Counts columns list the number of bonds (or angles) for which Mogul statistics could be retrieved, the number of bonds (or angles) that are observed in the model and the number of bonds (or angles) that are defined in the Chemical Component Dictionary. The

Link column lists molecule types, if any, to which the group is linked. The Z score for a bond length (or angle) is the number of standard deviations the observed value is removed from the expected value. A bond length (or angle) with $|Z| > 2$ is considered an outlier worth inspection. RMSZ is the root-mean-square of all Z scores of the bond lengths (or angles).

Mol	Type	Chain	Res	Link	Bond lengths			Bond angles		
					Counts	RMSZ	$\# Z > 2$	Counts	RMSZ	$\# Z > 2$
2	ACT	A	401	-	1,3,3	5.47	1 (100%)	0,3,3	0.00	-
2	ACT	A	402	-	1,3,3	4.08	1 (100%)	0,3,3	0.00	-
2	ACT	A	403	-	1,3,3	3.52	1 (100%)	0,3,3	0.00	-
3	A8Q	A	404	-	19,19,19	0.37	0	26,26,26	0.40	0
3	A8Q	A	405	-	19,19,19	0.30	0	26,26,26	0.38	0
4	ATP	A	406	-	17,20,33	0.60	0	12,30,52	0.76	0
2	ACT	B	401	-	1,3,3	4.99	1 (100%)	0,3,3	0.00	-
3	A8Q	B	402	-	19,19,19	0.26	0	26,26,26	0.47	0
4	ATP	B	403	-	18,21,33	0.63	0	16,31,52	0.77	0

In the following table, the Chirals column lists the number of chiral outliers, the number of chiral centers analysed, the number of these observed in the model and the number defined in the Chemical Component Dictionary. Similar counts are reported in the Torsion and Rings columns. '-' means no outliers of that kind were identified.

Mol	Type	Chain	Res	Link	Chirals	Torsions	Rings
2	ACT	A	401	-	-	0/0/0/0	0/0/0/0
2	ACT	A	402	-	-	0/0/0/0	0/0/0/0
2	ACT	A	403	-	-	0/0/0/0	0/0/0/0
3	A8Q	A	404	-	-	0/10/10/10	0/2/2/2
3	A8Q	A	405	-	-	0/10/10/10	0/2/2/2
4	ATP	A	406	-	-	0/0/20/38	0/3/3/3
2	ACT	B	401	-	-	0/0/0/0	0/0/0/0
3	A8Q	B	402	-	-	0/10/10/10	0/2/2/2
4	ATP	B	403	-	-	0/2/22/38	0/3/3/3

All (4) bond length outliers are listed below:

Mol	Chain	Res	Type	Atoms	Z	Observed(Å)	Ideal(Å)
2	A	403	ACT	CH3-C	3.52	1.53	1.48
2	A	402	ACT	CH3-C	4.08	1.53	1.48
2	B	401	ACT	CH3-C	4.99	1.55	1.48
2	A	401	ACT	CH3-C	5.47	1.55	1.48

There are no bond angle outliers.

There are no chirality outliers.

There are no torsion outliers.

There are no ring outliers.

2 monomers are involved in 3 short contacts:

Mol	Chain	Res	Type	Clashes	Symm-Clashes
4	A	406	ATP	1	0
4	B	403	ATP	2	0

5.7 Other polymers [i](#)

There are no such residues in this entry.

5.8 Polymer linkage issues [i](#)

There are no chain breaks in this entry.

6 Fit of model and data

6.1 Protein, DNA and RNA chains

In the following table, the column labelled ‘#RSRZ> 2’ contains the number (and percentage) of RSRZ outliers, followed by percent RSRZ outliers for the chain as percentile scores relative to all X-ray entries and entries of similar resolution. The OWAB column contains the minimum, median, 95th percentile and maximum values of the occupancy-weighted average B-factor per residue. The column labelled ‘Q< 0.9’ lists the number of (and percentage) of residues with an average occupancy less than 0.9.

Mol	Chain	Analysed	<RSRZ>	#RSRZ>2	OWAB(Å ²)	Q<0.9
1	A	326/352 (92%)	0.03	14 (4%) 35 34	6, 17, 48, 83	0
1	B	325/352 (92%)	0.35	24 (7%) 14 14	9, 25, 58, 87	0
All	All	651/704 (92%)	0.19	38 (5%) 23 21	6, 21, 55, 87	0

All (38) RSRZ outliers are listed below:

Mol	Chain	Res	Type	RSRZ
1	B	50	TYR	14.7
1	A	50	TYR	7.7
1	A	121	PHE	6.5
1	B	73	VAL	5.4
1	A	120	ASP	5.3
1	B	273	LEU	5.2
1	A	127	THR	5.1
1	A	125	TYR	5.0
1	A	123	GLN	4.9
1	A	124	LEU	4.7
1	B	48	GLY	4.5
1	B	72	PRO	4.5
1	B	49	LYS	4.0
1	B	105	VAL	4.0
1	A	49	LYS	3.7
1	B	47	ARG	3.6
1	B	258	ILE	3.0
1	B	107	ARG	2.9
1	B	104	PRO	2.9
1	B	45	LEU	2.7
1	B	71	LYS	2.7
1	B	121	PHE	2.6
1	A	48	GLY	2.6
1	A	72	PRO	2.5

Continued on next page...

Continued from previous page...

Mol	Chain	Res	Type	RSRZ
1	B	286	HIS	2.4
1	A	73	VAL	2.4
1	B	33	TRP	2.4
1	B	75	LYS	2.4
1	A	126	GLN	2.3
1	B	255	TYR	2.3
1	B	267	PRO	2.2
1	B	280	ARG	2.2
1	A	122	LYS	2.1
1	B	283	ARG	2.1
1	A	47	ARG	2.1
1	B	278	ARG	2.1
1	B	123	GLN	2.0
1	B	252	GLU	2.0

6.2 Non-standard residues in protein, DNA, RNA chains ⓘ

There are no non-standard protein/DNA/RNA residues in this entry.

6.3 Carbohydrates ⓘ

There are no carbohydrates in this entry.

6.4 Ligands ⓘ

In the following table, the Atoms column lists the number of modelled atoms in the group and the number defined in the chemical component dictionary. The B-factors column lists the minimum, median, 95th percentile and maximum values of B factors of atoms in the group. The column labelled 'Q<0.9' lists the number of atoms with occupancy less than 0.9.

Mol	Type	Chain	Res	Atoms	RSCC	RSR	B-factors(Å ²)	Q<0.9
4	ATP	B	403	19/31	0.56	0.23	40,43,52,53	0
4	ATP	A	406	18/31	0.77	0.32	37,40,56,58	0
3	A8Q	B	402	18/18	0.81	0.14	18,24,34,46	0
3	A8Q	A	404	18/18	0.83	0.15	15,25,34,47	0
2	ACT	A	403	4/4	0.87	0.15	28,28,29,32	0
2	ACT	A	402	4/4	0.91	0.11	36,38,38,40	0
2	ACT	B	401	4/4	0.92	0.16	28,30,31,33	0
3	A8Q	A	405	18/18	0.92	0.12	19,24,30,37	0
2	ACT	A	401	4/4	0.97	0.08	24,25,27,28	0

6.5 Other polymers

There are no such residues in this entry.