



Full wwPDB X-ray Structure Validation Report ⓘ

Mar 8, 2018 – 11:30 pm GMT

PDB ID : 3P2K
Title : Structure of an antibiotic related Methyltransferase
Authors : Sivaraman, J.; Husain, N.
Deposited on : 2010-10-02
Resolution : 2.70 Å(reported)

This is a Full wwPDB X-ray Structure Validation Report for a publicly released PDB entry.

We welcome your comments at validation@mail.wwpdb.org

A user guide is available at

<https://www.wwpdb.org/validation/2017/XrayValidationReportHelp>

with specific help available everywhere you see the ⓘ symbol.

The following versions of software and data (see [references ⓘ](#)) were used in the production of this report:

MolProbity : 4.02b-467
Mogul : 1.7.3 (157068), CSD as539be (2018)
Xtriage (Phenix) : 1.13
EDS : trunk30967
Percentile statistics : 20171227.v01 (using entries in the PDB archive December 27th 2017)
Refmac : 5.8.0158
CCP4 : 7.0 (Gargrove)
Ideal geometry (proteins) : Engh & Huber (2001)
Ideal geometry (DNA, RNA) : Parkinson et al. (1996)
Validation Pipeline (wwPDB-VP) : trunk30967

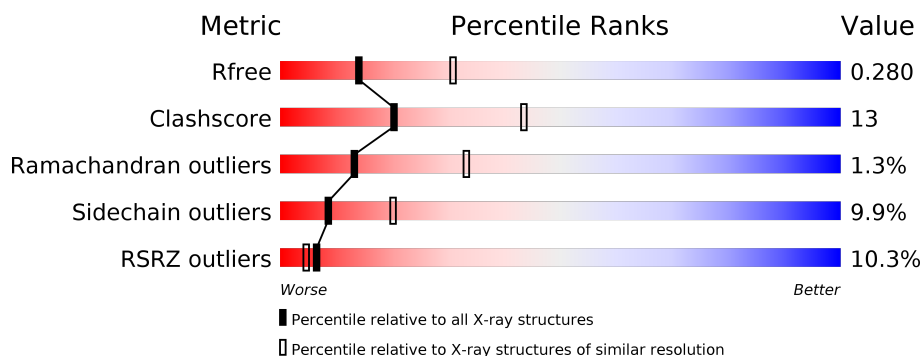
1 Overall quality at a glance

The following experimental techniques were used to determine the structure:

X-RAY DIFFRACTION

The reported resolution of this entry is 2.70 Å.

Percentile scores (ranging between 0-100) for global validation metrics of the entry are shown in the following graphic. The table shows the number of entries on which the scores are based.



Metric	Whole archive (#Entries)	Similar resolution (#Entries, resolution range(Å))
R_{free}	111664	2449 (2.70-2.70)
Clashscore	122126	2756 (2.70-2.70)
Ramachandran outliers	120053	2716 (2.70-2.70)
Sidechain outliers	120020	2716 (2.70-2.70)
RSRZ outliers	108989	2376 (2.70-2.70)

The table below summarises the geometric issues observed across the polymeric chains and their fit to the electron density. The red, orange, yellow and green segments on the lower bar indicate the fraction of residues that contain outliers for ≥ 3 , 2, 1 and 0 types of geometric quality criteria. A grey segment represents the fraction of residues that are not modelled. The numeric value for each fraction is indicated below the corresponding segment, with a dot representing fractions $\leq 5\%$. The upper red bar (where present) indicates the fraction of residues that have poor fit to the electron density. The numeric value is given above the bar.

Mol	Chain	Length	Quality of chain
1	A	225	<div> <div>2%</div> <div>62% 22% • 12%</div> </div>
1	B	225	<div> <div>4%</div> <div>58% 27% • 12%</div> </div>
1	C	225	<div> <div>3%</div> <div>58% 27% • 12%</div> </div>
1	D	225	<div> <div>27%</div> <div>61% 25% • 12%</div> </div>

2 Entry composition

There are 3 unique types of molecules in this entry. The entry contains 6461 atoms, of which 0 are hydrogens and 0 are deuteriums.

In the tables below, the ZeroOcc column contains the number of atoms modelled with zero occupancy, the AltConf column contains the number of residues with at least one atom in alternate conformation and the Trace column contains the number of residues modelled with at most 2 atoms.

- Molecule 1 is a protein called 16S rRNA methylase.

Mol	Chain	Residues	Atoms				ZeroOcc	AltConf	Trace
1	A	197	Total	C	N	O	0	0	0
			1571	1019	263	289			
1	B	197	Total	C	N	O	0	0	0
			1571	1019	263	289			
1	C	197	Total	C	N	O	0	0	0
			1571	1019	263	289			
1	D	197	Total	C	N	O	0	0	0
			1566	1015	262	289			

There are 24 discrepancies between the modelled and reference sequences:

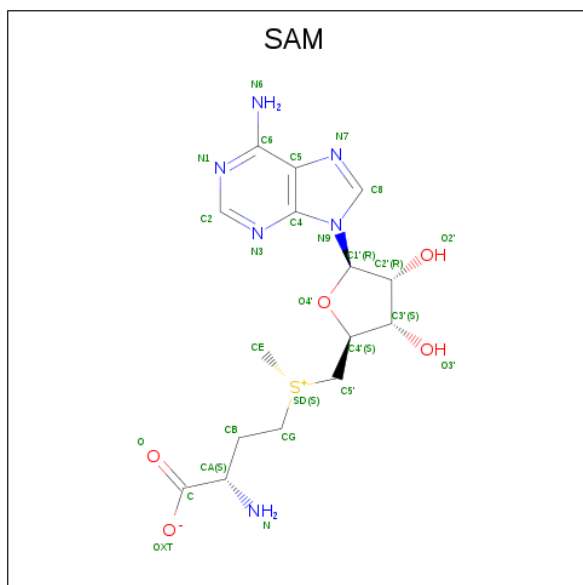
Chain	Residue	Modelled	Actual	Comment	Reference
A	220	HIS	-	EXPRESSION TAG	UNP A8C927
A	221	HIS	-	EXPRESSION TAG	UNP A8C927
A	222	HIS	-	EXPRESSION TAG	UNP A8C927
A	223	HIS	-	EXPRESSION TAG	UNP A8C927
A	224	HIS	-	EXPRESSION TAG	UNP A8C927
A	225	HIS	-	EXPRESSION TAG	UNP A8C927
B	220	HIS	-	EXPRESSION TAG	UNP A8C927
B	221	HIS	-	EXPRESSION TAG	UNP A8C927
B	222	HIS	-	EXPRESSION TAG	UNP A8C927
B	223	HIS	-	EXPRESSION TAG	UNP A8C927
B	224	HIS	-	EXPRESSION TAG	UNP A8C927
B	225	HIS	-	EXPRESSION TAG	UNP A8C927
C	220	HIS	-	EXPRESSION TAG	UNP A8C927
C	221	HIS	-	EXPRESSION TAG	UNP A8C927
C	222	HIS	-	EXPRESSION TAG	UNP A8C927
C	223	HIS	-	EXPRESSION TAG	UNP A8C927
C	224	HIS	-	EXPRESSION TAG	UNP A8C927
C	225	HIS	-	EXPRESSION TAG	UNP A8C927
D	220	HIS	-	EXPRESSION TAG	UNP A8C927
D	221	HIS	-	EXPRESSION TAG	UNP A8C927
D	222	HIS	-	EXPRESSION TAG	UNP A8C927

Continued on next page...

Continued from previous page...

Chain	Residue	Modelled	Actual	Comment	Reference
D	223	HIS	-	EXPRESSION TAG	UNP A8C927
D	224	HIS	-	EXPRESSION TAG	UNP A8C927
D	225	HIS	-	EXPRESSION TAG	UNP A8C927

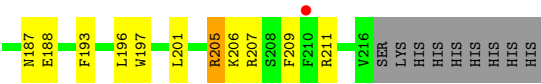
- Molecule 2 is S-ADENOSYLMETHIONINE (three-letter code: SAM) (formula: C₁₅H₂₂N₆O₅S).



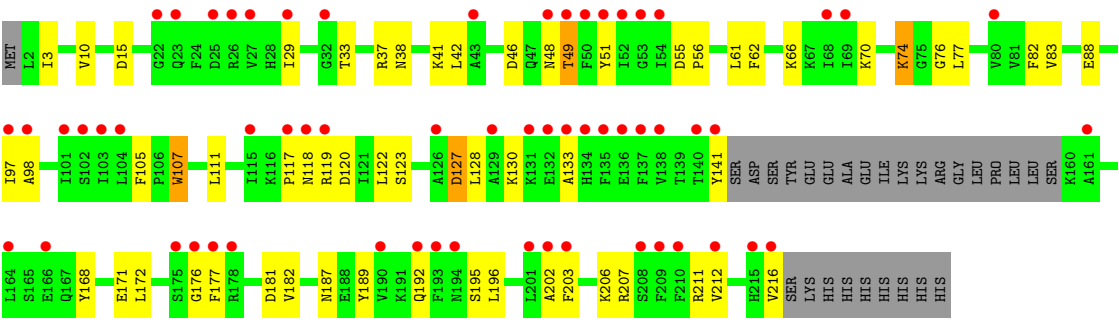
Mol	Chain	Residues	Atoms					ZeroOcc	AltConf
2	A	1	Total	C	N	O	S	0	0
			27	15	6	5	1		
2	B	1	Total	C	N	O	S	0	0
			27	15	6	5	1		
2	C	1	Total	C	N	O	S	0	0
			27	15	6	5	1		
2	D	1	Total	C	N	O	S	0	0
			27	15	6	5	1		

- Molecule 3 is water.

Mol	Chain	Residues	Atoms		ZeroOcc	AltConf
3	A	23	Total	O	0	0
			23	23		
3	B	20	Total	O	0	0
			20	20		
3	C	16	Total	O	0	0
			16	16		
3	D	15	Total	O	0	0
			15	15		



● Molecule 1: 16S rRNA methylase



4 Data and refinement statistics

Property	Value	Source
Space group	P 1 21 1	Depositor
Cell constants a, b, c, α , β , γ	75.78Å 64.42Å 104.05Å 90.00° 100.08° 90.00°	Depositor
Resolution (Å)	50.00 – 2.70 48.76 – 2.70	Depositor EDS
% Data completeness (in resolution range)	97.0 (50.00-2.70) 96.9 (48.76-2.70)	Depositor EDS
R_{merge}	0.13	Depositor
R_{sym}	(Not available)	Depositor
$\langle I/\sigma(I) \rangle$ ¹	2.95 (at 2.69Å)	Xtriage
Refinement program	REFMAC 5.5.0109	Depositor
R, R_{free}	0.252 , 0.284 0.247 , 0.280	Depositor DCC
R_{free} test set	2692 reflections (10.04%)	wwPDB-VP
Wilson B-factor (Å ²)	42.8	Xtriage
Anisotropy	0.180	Xtriage
Bulk solvent k_{sol} (e/Å ³), B_{sol} (Å ²)	0.31 , 50.6	EDS
L-test for twinning ²	$\langle L \rangle = 0.44$, $\langle L^2 \rangle = 0.27$	Xtriage
Estimated twinning fraction	No twinning to report.	Xtriage
F_o, F_c correlation	0.87	EDS
Total number of atoms	6461	wwPDB-VP
Average B, all atoms (Å ²)	59.0	wwPDB-VP

Xtriage's analysis on translational NCS is as follows: *The largest off-origin peak in the Patterson function is 15.90% of the height of the origin peak. No significant pseudotranslation is detected.*

¹Intensities estimated from amplitudes.

²Theoretical values of $\langle |L| \rangle$, $\langle L^2 \rangle$ for acentric reflections are 0.5, 0.333 respectively for untwinned datasets, and 0.375, 0.2 for perfectly twinned datasets.

5 Model quality [i](#)

5.1 Standard geometry [i](#)

Bond lengths and bond angles in the following residue types are not validated in this section: SAM

The Z score for a bond length (or angle) is the number of standard deviations the observed value is removed from the expected value. A bond length (or angle) with $|Z| > 5$ is considered an outlier worth inspection. RMSZ is the root-mean-square of all Z scores of the bond lengths (or angles).

Mol	Chain	Bond lengths		Bond angles	
		RMSZ	$\# Z > 5$	RMSZ	$\# Z > 5$
1	A	0.51	0/1602	0.67	0/2157
1	B	0.53	0/1602	0.66	0/2157
1	C	0.51	0/1602	0.65	0/2157
1	D	0.40	0/1597	0.55	0/2151
All	All	0.49	0/6403	0.64	0/8622

There are no bond length outliers.

There are no bond angle outliers.

There are no chirality outliers.

There are no planarity outliers.

5.2 Too-close contacts [i](#)

In the following table, the Non-H and H(model) columns list the number of non-hydrogen atoms and hydrogen atoms in the chain respectively. The H(added) column lists the number of hydrogen atoms added and optimized by MolProbity. The Clashes column lists the number of clashes within the asymmetric unit, whereas Symm-Clashes lists symmetry related clashes.

Mol	Chain	Non-H	H(model)	H(added)	Clashes	Symm-Clashes
1	A	1571	0	1586	43	0
1	B	1571	0	1586	46	0
1	C	1571	0	1586	45	0
1	D	1566	0	1574	34	0
2	A	27	0	22	5	0
2	B	27	0	22	6	0
2	C	27	0	22	3	0
2	D	27	0	22	6	0
3	A	23	0	0	2	0

Continued on next page...

Continued from previous page...

Mol	Chain	Non-H	H(model)	H(added)	Clashes	Symm-Clashes
3	B	20	0	0	7	0
3	C	16	0	0	4	0
3	D	15	0	0	4	0
All	All	6461	0	6420	171	0

The all-atom clashscore is defined as the number of clashes found per 1000 atoms (including hydrogen atoms). The all-atom clashscore for this structure is 13.

All (171) close contacts within the same asymmetric unit are listed below, sorted by their clash magnitude.

Atom-1	Atom-2	Interatomic distance (Å)	Clash overlap (Å)
1:B:101:ILE:HD11	1:B:129:ALA:HB2	1.40	1.03
1:D:41:LYS:HD2	3:D:238:HOH:O	1.64	0.97
1:A:13:SER:OG	1:A:16:GLU:HG3	1.64	0.96
1:D:118:ASN:O	1:D:122:LEU:HB2	1.67	0.94
1:B:89:SER:HB2	3:B:242:HOH:O	1.71	0.90
1:A:101:ILE:HD11	1:A:129:ALA:HB2	1.53	0.89
1:D:187:ASN:HD21	1:D:206:LYS:HA	1.34	0.89
1:B:4:LEU:HD13	1:B:84:ILE:HD11	1.56	0.84
1:A:21:ILE:CD1	1:A:97:ILE:HD11	2.08	0.83
1:C:4:LEU:HD22	1:C:84:ILE:HD11	1.60	0.82
1:B:21:ILE:HD13	1:B:27:VAL:HG21	1.62	0.80
1:A:2:LEU:N	3:A:247:HOH:O	2.16	0.76
1:B:136:GLU:HG3	1:B:211:ARG:HE	1.51	0.75
1:C:197:TRP:O	1:C:201:LEU:HD22	1.89	0.73
1:D:187:ASN:ND2	1:D:206:LYS:HA	2.04	0.72
1:A:4:LEU:HD13	1:A:84:ILE:HD11	1.71	0.71
1:B:33:THR:O	2:B:6735:SAM:HA	1.91	0.71
1:C:211:ARG:NH2	3:C:236:HOH:O	2.25	0.69
1:A:41:LYS:O	1:A:44:ILE:HG22	1.91	0.69
1:C:187:ASN:HD21	1:C:207:ARG:H	1.38	0.69
1:A:118:ASN:O	1:A:122:LEU:HB2	1.94	0.68
1:A:136:GLU:O	1:A:137:PHE:HD1	1.77	0.67
1:A:101:ILE:CD1	1:A:129:ALA:HB2	2.24	0.67
1:D:107:TRP:CD1	2:D:6735:SAM:H5'1	2.30	0.66
1:A:90:LEU:HD22	1:A:90:LEU:N	2.11	0.66
1:C:38:ASN:OD1	1:C:193:PHE:HB3	1.96	0.66
1:B:107:TRP:CD1	1:B:107:TRP:C	2.69	0.65
1:D:189:TYR:O	1:D:192:GLN:HG2	1.96	0.65
1:D:70:LYS:O	1:D:76:GLY:HA3	1.97	0.65
1:B:119:ARG:O	1:B:123:SER:HB2	1.97	0.64

Continued on next page...

Continued from previous page...

Atom-1	Atom-2	Interatomic distance (Å)	Clash overlap (Å)
1:C:104:LEU:O	2:C:6735:SAM:N	2.31	0.63
1:D:74:LYS:HA	1:D:74:LYS:HE2	1.81	0.63
1:D:107:TRP:NE1	2:D:6735:SAM:H5'1	2.14	0.63
1:A:90:LEU:HD22	1:A:90:LEU:H	1.64	0.62
1:B:199:LYS:CE	3:B:243:HOH:O	2.48	0.61
1:B:26:ARG:HH22	1:B:100:SER:HB3	1.65	0.61
1:C:119:ARG:HD3	1:C:174:ASN:HD22	1.65	0.60
1:A:21:ILE:HD11	1:A:97:ILE:HD11	1.84	0.60
1:C:35:ASP:HA	1:C:60:ASN:O	2.02	0.59
1:B:89:SER:O	1:B:89:SER:OG	2.18	0.59
1:D:182:VAL:O	1:D:182:VAL:HG12	2.01	0.59
1:D:172:LEU:HG	1:D:177:PHE:HB2	1.85	0.59
1:C:7:THR:CG2	1:C:66:LYS:HE2	2.34	0.58
1:B:187:ASN:HD21	1:B:207:ARG:H	1.51	0.58
1:C:107:TRP:C	1:C:107:TRP:CD1	2.76	0.58
1:A:203:PHE:HA	3:D:229:HOH:O	2.04	0.57
1:B:107:TRP:HD1	1:B:107:TRP:C	2.06	0.57
1:B:90:LEU:HD23	1:B:124:ASN:HB3	1.86	0.56
1:C:160:LYS:HD3	1:C:184:GLU:HB2	1.86	0.56
1:D:49:THR:HB	1:D:51:TYR:CE2	2.41	0.56
1:C:205:ARG:HB2	3:C:240:HOH:O	2.04	0.56
1:A:138:VAL:HA	1:A:210:PHE:O	2.07	0.55
1:B:199:LYS:HE2	3:B:243:HOH:O	2.07	0.55
1:A:201:LEU:HD13	1:A:207:ARG:HH11	1.71	0.54
1:B:199:LYS:HE3	3:B:243:HOH:O	2.05	0.54
1:D:207:ARG:HD3	3:D:228:HOH:O	2.07	0.54
1:D:202:ALA:HB2	3:D:240:HOH:O	2.08	0.54
1:C:13:SER:OG	1:C:16:GLU:HG3	2.09	0.53
1:C:136:GLU:HG3	1:C:211:ARG:HE	1.73	0.53
1:A:26:ARG:NH2	1:A:100:SER:OG	2.41	0.53
1:B:136:GLU:HG3	1:B:211:ARG:NE	2.23	0.53
1:B:8:LYS:HG3	3:B:235:HOH:O	2.07	0.53
1:D:33:THR:HG22	1:D:55:ASP:HB2	1.90	0.53
1:B:136:GLU:CG	1:B:211:ARG:HE	2.19	0.53
1:C:87:ALA:O	1:C:90:LEU:HD22	2.08	0.53
1:C:87:ALA:O	1:C:90:LEU:CD2	2.57	0.53
1:D:3:ILE:HG22	1:D:83:VAL:HG22	1.91	0.53
1:A:74:LYS:HE2	1:A:74:LYS:HA	1.91	0.53
1:C:117:PRO:HB2	1:C:122:LEU:HD22	1.90	0.53
1:A:201:LEU:HD13	1:A:207:ARG:NH1	2.24	0.53
1:C:7:THR:HG23	1:C:66:LYS:HE2	1.90	0.53

Continued on next page...

Continued from previous page...

Atom-1	Atom-2	Interatomic distance (Å)	Clash overlap (Å)
1:C:197:TRP:O	1:C:201:LEU:CD2	2.55	0.52
1:B:110:LEU:HB2	2:B:6735:SAM:C5	2.40	0.52
1:A:57:VAL:HG11	1:A:60:ASN:ND2	2.25	0.51
1:D:97:ILE:N	1:D:128:LEU:O	2.37	0.51
1:B:119:ARG:HH11	1:B:171:GLU:HG2	1.74	0.51
1:A:66:LYS:O	1:A:69:ILE:HG22	2.11	0.51
1:C:107:TRP:CE2	2:C:6735:SAM:H5'1	2.46	0.51
1:B:4:LEU:HD13	1:B:84:ILE:CD1	2.35	0.51
1:D:119:ARG:NH1	1:D:171:GLU:HG2	2.26	0.51
1:B:197:TRP:O	1:B:201:LEU:HD23	2.11	0.50
1:C:101:ILE:HD11	1:C:129:ALA:HB2	1.92	0.50
1:B:26:ARG:HB2	1:B:49:THR:HG23	1.94	0.50
1:A:136:GLU:C	1:A:137:PHE:HD1	2.14	0.50
1:D:176:GLY:O	1:D:216:VAL:HA	2.12	0.49
1:C:201:LEU:HB3	1:C:209:PHE:CZ	2.47	0.49
1:B:187:ASN:HD21	1:B:206:LYS:HA	1.76	0.49
1:C:62:PHE:O	1:C:66:LYS:HB2	2.13	0.49
1:B:100:SER:HA	1:B:134:HIS:O	2.13	0.49
1:B:26:ARG:HH22	1:B:100:SER:CB	2.25	0.48
1:C:56:PRO:HD3	2:C:6735:SAM:N3	2.28	0.48
1:A:100:SER:HA	1:A:134:HIS:O	2.14	0.48
1:A:107:TRP:CE3	2:A:6735:SAM:HE2	2.48	0.48
1:C:172:LEU:HG	1:C:177:PHE:HB2	1.96	0.48
1:C:107:TRP:C	1:C:107:TRP:HD1	2.16	0.48
1:B:38:ASN:OD1	1:B:193:PHE:HB3	2.14	0.47
1:D:29:ILE:HD12	1:D:98:ALA:HB2	1.95	0.47
1:A:55:ASP:OD2	1:A:56:PRO:HD2	2.14	0.47
1:C:33:THR:HG23	1:C:61:LEU:HD21	1.95	0.47
1:B:41:LYS:O	1:B:44:ILE:HG22	2.15	0.47
1:B:55:ASP:O	1:B:84:ILE:HA	2.16	0.46
1:C:56:PRO:HB3	1:C:86:ALA:HB2	1.97	0.46
1:B:96:ASN:OD1	1:B:130:LYS:HA	2.15	0.46
1:C:197:TRP:NE1	1:C:201:LEU:HD21	2.31	0.46
1:A:105:PHE:HD2	2:A:6735:SAM:O	1.99	0.46
1:D:98:ALA:N	1:D:128:LEU:O	2.42	0.46
1:D:62:PHE:O	1:D:66:LYS:HB2	2.16	0.46
1:D:38:ASN:ND2	2:D:6735:SAM:O	2.49	0.46
1:C:107:TRP:HD1	1:C:107:TRP:O	1.98	0.46
1:A:87:ALA:O	1:A:90:LEU:HD21	2.15	0.45
1:A:107:TRP:C	1:A:107:TRP:CD1	2.88	0.45
1:B:110:LEU:HB2	2:B:6735:SAM:N7	2.31	0.45

Continued on next page...

Continued from previous page...

Atom-1	Atom-2	Interatomic distance (Å)	Clash overlap (Å)
1:C:188:GLU:HG2	3:C:226:HOH:O	2.15	0.45
1:A:203:PHE:O	2:D:6735:SAM:H2'	2.16	0.45
1:C:110:LEU:O	1:C:111:LEU:C	2.55	0.45
1:C:5:LYS:HD3	1:C:69:ILE:CD1	2.47	0.45
1:B:107:TRP:CE3	2:B:6735:SAM:HE3	2.52	0.44
1:C:116:LYS:HB3	1:C:117:PRO:CA	2.47	0.44
1:C:5:LYS:HD3	1:C:69:ILE:HD11	1.97	0.44
1:C:201:LEU:HB3	1:C:209:PHE:HZ	1.82	0.44
1:B:107:TRP:CE2	2:B:6735:SAM:H5'1	2.52	0.44
1:B:201:LEU:HD13	1:B:207:ARG:HH11	1.82	0.44
1:C:40:TYR:OH	1:C:67:LYS:HE3	2.17	0.44
1:D:203:PHE:N	1:D:203:PHE:CD1	2.86	0.43
1:C:126:ALA:HB2	1:C:177:PHE:CE2	2.53	0.43
1:A:101:ILE:HG22	1:A:102:SER:N	2.32	0.43
1:C:26:ARG:NH2	1:C:100:SER:OG	2.46	0.43
1:B:169:LYS:HA	1:B:179:ILE:HD12	2.01	0.43
1:D:182:VAL:HG22	1:D:212:VAL:HG22	2.00	0.43
1:A:197:TRP:O	1:A:201:LEU:HD23	2.18	0.43
2:A:6735:SAM:H4'	2:A:6735:SAM:HG2	1.48	0.43
1:C:39:ILE:HD13	1:C:51:TYR:HB3	2.01	0.43
1:A:70:LYS:O	1:A:76:GLY:HA3	2.19	0.43
1:C:110:LEU:HA	1:C:113:TYR:CD2	2.54	0.43
1:D:37:ARG:HB2	1:D:195:SER:HA	2.01	0.43
1:B:44:ILE:HD12	1:B:77:LEU:HD11	2.00	0.42
1:B:77:LEU:HA	1:B:77:LEU:HD12	1.74	0.42
1:B:194:ASN:ND2	3:B:244:HOH:O	2.52	0.42
1:A:119:ARG:O	1:A:123:SER:HB2	2.19	0.42
1:A:57:VAL:CG1	1:A:60:ASN:ND2	2.83	0.42
1:D:42:LEU:HB3	1:D:51:TYR:CE1	2.54	0.42
1:A:117:PRO:HB2	1:A:122:LEU:HD22	2.01	0.42
1:A:201:LEU:CD2	1:A:201:LEU:N	2.83	0.42
1:A:5:LYS:CG	1:A:10:VAL:HG21	2.50	0.42
1:B:39:ILE:O	1:B:40:TYR:C	2.58	0.42
2:D:6735:SAM:HG1	2:D:6735:SAM:H4'	1.54	0.42
1:B:47:GLN:HA	1:B:47:GLN:OE1	2.19	0.42
2:B:6735:SAM:HB2	3:B:227:HOH:O	2.20	0.42
1:A:172:LEU:HD22	1:A:179:ILE:HD11	2.01	0.42
1:D:123:SER:O	1:D:127:ASP:HB2	2.19	0.42
1:D:168:TYR:CE2	1:D:172:LEU:HD13	2.55	0.42
1:A:173:SER:HB2	3:A:232:HOH:O	2.20	0.41
1:A:169:LYS:HA	1:A:179:ILE:HD12	2.01	0.41

Continued on next page...

Continued from previous page...

Atom-1	Atom-2	Interatomic distance (Å)	Clash overlap (Å)
1:C:187:ASN:H	1:C:187:ASN:HD22	1.68	0.41
1:B:104:LEU:O	1:B:105:PHE:C	2.58	0.41
1:C:77:LEU:HA	1:C:77:LEU:HD12	1.87	0.41
1:B:116:LYS:HB3	1:B:117:PRO:C	2.41	0.41
1:C:109:THR:HG23	3:C:233:HOH:O	2.19	0.41
1:A:55:ASP:OD2	2:A:6735:SAM:O2'	2.39	0.41
1:B:205:ARG:HG2	1:B:205:ARG:H	1.58	0.41
1:D:61:LEU:HD22	1:D:82:PHE:CE1	2.56	0.41
1:A:201:LEU:N	1:A:201:LEU:HD23	2.36	0.41
1:D:107:TRP:C	1:D:107:TRP:CD1	2.94	0.41
1:B:26:ARG:HA	1:B:99:ASP:OD2	2.21	0.41
1:A:90:LEU:CD2	1:A:90:LEU:H	2.30	0.40
1:B:180:ASP:HB2	1:B:214:GLY:HA2	2.04	0.40
1:D:88:GLU:OE1	2:D:6735:SAM:N6	2.48	0.40
1:A:107:TRP:CE3	2:A:6735:SAM:CE	3.04	0.40
1:C:41:LYS:O	1:C:44:ILE:HG22	2.22	0.40
1:D:111:LEU:HG	1:D:111:LEU:O	2.20	0.40
1:D:55:ASP:OD2	1:D:56:PRO:HD2	2.21	0.40

There are no symmetry-related clashes.

5.3 Torsion angles

5.3.1 Protein backbone

In the following table, the Percentiles column shows the percent Ramachandran outliers of the chain as a percentile score with respect to all X-ray entries followed by that with respect to entries of similar resolution.

The Analysed column shows the number of residues for which the backbone conformation was analysed, and the total number of residues.

Mol	Chain	Analysed	Favoured	Allowed	Outliers	Percentiles	
1	A	193/225 (86%)	178 (92%)	14 (7%)	1 (0%)	31	58
1	B	193/225 (86%)	184 (95%)	7 (4%)	2 (1%)	17	41
1	C	193/225 (86%)	176 (91%)	14 (7%)	3 (2%)	11	27
1	D	193/225 (86%)	176 (91%)	13 (7%)	4 (2%)	8	20
All	All	772/900 (86%)	714 (92%)	48 (6%)	10 (1%)	13	33

All (10) Ramachandran outliers are listed below:

Mol	Chain	Res	Type
1	A	131	LYS
1	B	132	GLU
1	D	46	ASP
1	D	130	LYS
1	B	131	LYS
1	C	132	GLU
1	C	206	LYS
1	D	117	PRO
1	C	133	ALA
1	D	133	ALA

5.3.2 Protein sidechains ⓘ

In the following table, the Percentiles column shows the percent sidechain outliers of the chain as a percentile score with respect to all X-ray entries followed by that with respect to entries of similar resolution.

The Analysed column shows the number of residues for which the sidechain conformation was analysed, and the total number of residues.

Mol	Chain	Analysed	Rotameric	Outliers	Percentiles	
1	A	170/199 (85%)	152 (89%)	18 (11%)	7	17
1	B	170/199 (85%)	149 (88%)	21 (12%)	5	12
1	C	170/199 (85%)	156 (92%)	14 (8%)	12	29
1	D	169/199 (85%)	155 (92%)	14 (8%)	12	28
All	All	679/796 (85%)	612 (90%)	67 (10%)	8	20

All (67) residues with a non-rotameric sidechain are listed below:

Mol	Chain	Res	Type
1	A	16	GLU
1	A	39	ILE
1	A	42	LEU
1	A	58	LYS
1	A	73	SER
1	A	90	LEU
1	A	97	ILE
1	A	102	SER
1	A	107	TRP
1	A	112	GLU
1	A	122	LEU
1	A	127	ASP

Continued on next page...

Continued from previous page...

Mol	Chain	Res	Type
1	A	141	TYR
1	A	172	LEU
1	A	183	LYS
1	A	196	LEU
1	A	201	LEU
1	A	205	ARG
1	B	11	ASP
1	B	15	ASP
1	B	16	GLU
1	B	25	ASP
1	B	39	ILE
1	B	42	LEU
1	B	71	LYS
1	B	73	SER
1	B	77	LEU
1	B	97	ILE
1	B	107	TRP
1	B	122	LEU
1	B	123	SER
1	B	127	ASP
1	B	141	TYR
1	B	172	LEU
1	B	175	SER
1	B	183	LYS
1	B	196	LEU
1	B	201	LEU
1	B	205	ARG
1	C	9	THR
1	C	11	ASP
1	C	39	ILE
1	C	42	LEU
1	C	44	ILE
1	C	48	ASN
1	C	73	SER
1	C	77	LEU
1	C	95	LYS
1	C	107	TRP
1	C	122	LEU
1	C	127	ASP
1	C	196	LEU
1	C	205	ARG
1	D	10	VAL

Continued on next page...

Continued from previous page...

Mol	Chain	Res	Type
1	D	15	ASP
1	D	48	ASN
1	D	49	THR
1	D	74	LYS
1	D	77	LEU
1	D	105	PHE
1	D	107	TRP
1	D	120	ASP
1	D	127	ASP
1	D	141	TYR
1	D	181	ASP
1	D	196	LEU
1	D	211	ARG

Some sidechains can be flipped to improve hydrogen bonding and reduce clashes. All (12) such sidechains are listed below:

Mol	Chain	Res	Type
1	A	60	ASN
1	A	187	ASN
1	A	192	GLN
1	B	48	ASN
1	B	187	ASN
1	B	194	ASN
1	C	48	ASN
1	C	174	ASN
1	C	187	ASN
1	D	48	ASN
1	D	96	ASN
1	D	187	ASN

5.3.3 RNA ⓘ

There are no RNA molecules in this entry.

5.4 Non-standard residues in protein, DNA, RNA chains ⓘ

There are no non-standard protein/DNA/RNA residues in this entry.

5.5 Carbohydrates ⓘ

There are no carbohydrates in this entry.

5.6 Ligand geometry ⓘ

4 ligands are modelled in this entry.

In the following table, the Counts columns list the number of bonds (or angles) for which Mogul statistics could be retrieved, the number of bonds (or angles) that are observed in the model and the number of bonds (or angles) that are defined in the Chemical Component Dictionary. The Link column lists molecule types, if any, to which the group is linked. The Z score for a bond length (or angle) is the number of standard deviations the observed value is removed from the expected value. A bond length (or angle) with $|Z| > 2$ is considered an outlier worth inspection. RMSZ is the root-mean-square of all Z scores of the bond lengths (or angles).

Mol	Type	Chain	Res	Link	Bond lengths			Bond angles		
					Counts	RMSZ	# Z > 2	Counts	RMSZ	# Z > 2
2	SAM	A	6735	-	21,29,29	1.27	3 (14%)	16,42,42	2.80	4 (25%)
2	SAM	B	6735	-	21,29,29	1.30	2 (9%)	16,42,42	2.88	1 (6%)
2	SAM	C	6735	-	21,29,29	1.32	2 (9%)	16,42,42	2.72	2 (12%)
2	SAM	D	6735	-	21,29,29	1.33	2 (9%)	16,42,42	3.58	4 (25%)

In the following table, the Chirals column lists the number of chiral outliers, the number of chiral centers analysed, the number of these observed in the model and the number defined in the Chemical Component Dictionary. Similar counts are reported in the Torsion and Rings columns. '-' means no outliers of that kind were identified.

Mol	Type	Chain	Res	Link	Chirals	Torsions	Rings
2	SAM	A	6735	-	-	0/8/33/33	0/3/3/3
2	SAM	B	6735	-	-	0/8/33/33	0/3/3/3
2	SAM	C	6735	-	-	0/8/33/33	0/3/3/3
2	SAM	D	6735	-	-	0/8/33/33	0/3/3/3

All (9) bond length outliers are listed below:

Mol	Chain	Res	Type	Atoms	Z	Observed(Å)	Ideal(Å)
2	A	6735	SAM	O4'-C4'	-2.03	1.40	1.45
2	A	6735	SAM	C2-N1	2.39	1.38	1.33
2	C	6735	SAM	C2-N1	2.67	1.38	1.33
2	D	6735	SAM	C2-N1	2.85	1.39	1.33
2	B	6735	SAM	C2-N1	3.21	1.39	1.33
2	B	6735	SAM	C2-N3	3.83	1.38	1.32

Continued on next page...

Continued from previous page...

Mol	Chain	Res	Type	Atoms	Z	Observed(Å)	Ideal(Å)
2	A	6735	SAM	C2-N3	4.08	1.38	1.32
2	D	6735	SAM	C2-N3	4.10	1.38	1.32
2	C	6735	SAM	C2-N3	4.18	1.38	1.32

All (11) bond angle outliers are listed below:

Mol	Chain	Res	Type	Atoms	Z	Observed(°)	Ideal(°)
2	D	6735	SAM	N3-C2-N1	-13.15	117.61	128.86
2	B	6735	SAM	N3-C2-N1	-11.13	119.33	128.86
2	C	6735	SAM	N3-C2-N1	-10.06	120.25	128.86
2	A	6735	SAM	N3-C2-N1	-9.63	120.62	128.86
2	D	6735	SAM	C1'-N9-C4	-3.45	120.67	126.64
2	A	6735	SAM	C4'-O4'-C1'	-3.22	106.47	109.83
2	A	6735	SAM	C1'-N9-C4	-3.01	121.44	126.64
2	C	6735	SAM	O3'-C3'-C4'	-2.82	102.91	111.06
2	A	6735	SAM	C4-C5-N7	-2.13	107.35	109.41
2	D	6735	SAM	C2-N1-C6	2.06	122.25	118.75
2	D	6735	SAM	O4'-C4'-C3'	2.34	109.79	105.15

There are no chirality outliers.

There are no torsion outliers.

There are no ring outliers.

4 monomers are involved in 20 short contacts:

Mol	Chain	Res	Type	Clashes	Symm-Clashes
2	A	6735	SAM	5	0
2	B	6735	SAM	6	0
2	C	6735	SAM	3	0
2	D	6735	SAM	6	0

5.7 Other polymers [i](#)

There are no such residues in this entry.

5.8 Polymer linkage issues [i](#)

There are no chain breaks in this entry.

6 Fit of model and data

6.1 Protein, DNA and RNA chains

In the following table, the column labelled ‘#RSRZ > 2’ contains the number (and percentage) of RSRZ outliers, followed by percent RSRZ outliers for the chain as percentile scores relative to all X-ray entries and entries of similar resolution. The OWAB column contains the minimum, median, 95th percentile and maximum values of the occupancy-weighted average B-factor per residue. The column labelled ‘Q < 0.9’ lists the number of (and percentage) of residues with an average occupancy less than 0.9.

Mol	Chain	Analysed	<RSRZ>	#RSRZ>2	OWAB(Å ²)	Q<0.9
1	A	197/225 (87%)	0.14	5 (2%) 57 58	20, 43, 63, 71	0
1	B	197/225 (87%)	0.29	10 (5%) 28 26	16, 41, 64, 81	0
1	C	197/225 (87%)	0.31	6 (3%) 50 50	18, 48, 70, 83	0
1	D	197/225 (87%)	1.59	60 (30%) 0 0	47, 108, 135, 142	0
All	All	788/900 (87%)	0.58	81 (10%) 6 5	16, 50, 125, 142	0

All (81) RSRZ outliers are listed below:

Mol	Chain	Res	Type	RSRZ
1	D	131	LYS	9.7
1	D	50	PHE	9.0
1	D	215	HIS	7.4
1	D	22	GLY	7.4
1	D	216	VAL	7.2
1	D	177	PHE	6.5
1	D	212	VAL	6.4
1	D	175	SER	6.2
1	D	136	GLU	5.9
1	D	98	ALA	5.5
1	D	68	ILE	5.3
1	D	161	ALA	4.9
1	D	135	PHE	4.7
1	D	51	TYR	4.7
1	D	141	TYR	4.6
1	D	101	ILE	4.5
1	C	101	ILE	4.2
1	D	132	GLU	4.2
1	D	104	LEU	4.1
1	D	115	ILE	3.8
1	D	49	THR	3.8

Continued on next page...

Continued from previous page...

Mol	Chain	Res	Type	RSRZ
1	D	52	ILE	3.7
1	D	192	GLN	3.7
1	D	26	ARG	3.6
1	D	140	THR	3.6
1	B	216	VAL	3.6
1	D	129	ALA	3.5
1	D	176	GLY	3.4
1	D	166	GLU	3.2
1	D	119	ARG	3.1
1	D	193	PHE	3.1
1	D	137	PHE	3.1
1	D	29	ILE	3.1
1	B	141	TYR	3.1
1	D	69	ILE	3.1
1	B	74	LYS	3.1
1	D	117	PRO	3.0
1	D	27	VAL	3.0
1	D	25	ASP	3.0
1	C	141	TYR	3.0
1	D	164	LEU	3.0
1	B	175	SER	2.9
1	D	80	VAL	2.8
1	A	141	TYR	2.7
1	D	202	ALA	2.7
1	D	97	ILE	2.7
1	D	210	PHE	2.7
1	D	23	GLN	2.6
1	D	48	ASN	2.6
1	D	118	ASN	2.6
1	B	215	HIS	2.5
1	B	173	SER	2.5
1	D	134	HIS	2.5
1	D	190	VAL	2.4
1	D	32	GLY	2.4
1	D	194	ASN	2.4
1	A	170	ALA	2.4
1	C	21	ILE	2.3
1	B	137	PHE	2.3
1	C	210	PHE	2.3
1	D	103	ILE	2.3
1	A	74	LYS	2.3
1	D	209	PHE	2.3

Continued on next page...

Continued from previous page...

Mol	Chain	Res	Type	RSRZ
1	B	172	LEU	2.3
1	B	174	ASN	2.3
1	D	54	ILE	2.3
1	D	133	ALA	2.2
1	D	53	GLY	2.2
1	D	178	ARG	2.2
1	D	138	VAL	2.2
1	C	96	ASN	2.1
1	D	208	SER	2.1
1	C	97	ILE	2.1
1	D	201	LEU	2.1
1	D	43	ALA	2.1
1	D	203	PHE	2.1
1	D	126	ALA	2.1
1	B	178	ARG	2.0
1	A	127	ASP	2.0
1	A	169	LYS	2.0
1	D	102	SER	2.0

6.2 Non-standard residues in protein, DNA, RNA chains [i](#)

There are no non-standard protein/DNA/RNA residues in this entry.

6.3 Carbohydrates [i](#)

There are no carbohydrates in this entry.

6.4 Ligands [i](#)

In the following table, the Atoms column lists the number of modelled atoms in the group and the number defined in the chemical component dictionary. The B-factors column lists the minimum, median, 95th percentile and maximum values of B factors of atoms in the group. The column labelled 'Q< 0.9' lists the number of atoms with occupancy less than 0.9.

Mol	Type	Chain	Res	Atoms	RSCC	RSR	B-factors(\AA^2)	Q<0.9
2	SAM	D	6735	27/27	0.94	0.14	27,45,49,50	0
2	SAM	C	6735	27/27	0.96	0.15	13,17,22,28	0
2	SAM	A	6735	27/27	0.97	0.11	12,18,21,28	0
2	SAM	B	6735	27/27	0.97	0.14	11,17,25,29	0

6.5 Other polymers [i](#)

There are no such residues in this entry.