



wwPDB X-ray Structure Validation Summary Report ⓘ

Mar 9, 2018 – 12:09 am GMT

PDB ID : 1PWP
Title : Crystal Structure of the Anthrax Lethal Factor complexed with Small Molecule Inhibitor NSC 12155
Authors : Wong, T.Y.; Schwarzenbacher, R.; Liddington, R.C.
Deposited on : 2003-07-02
Resolution : 2.90 Å(reported)

This is a wwPDB X-ray Structure Validation Summary Report for a publicly released PDB entry.

We welcome your comments at validation@mail.wwpdb.org

A user guide is available at

<https://www.wwpdb.org/validation/2017/XrayValidationReportHelp>

with specific help available everywhere you see the ⓘ symbol.

The following versions of software and data (see [references ⓘ](#)) were used in the production of this report:

MolProbity : 4.02b-467
Mogul : 1.7.3 (157068), CSD as539be (2018)
Xtriage (Phenix) : 1.13
EDS : trunk30967
Percentile statistics : 20171227.v01 (using entries in the PDB archive December 27th 2017)
Refmac : 5.8.0158
CCP4 : 7.0 (Gargrove)
Ideal geometry (proteins) : Engh & Huber (2001)
Ideal geometry (DNA, RNA) : Parkinson et al. (1996)
Validation Pipeline (wwPDB-VP) : trunk30967

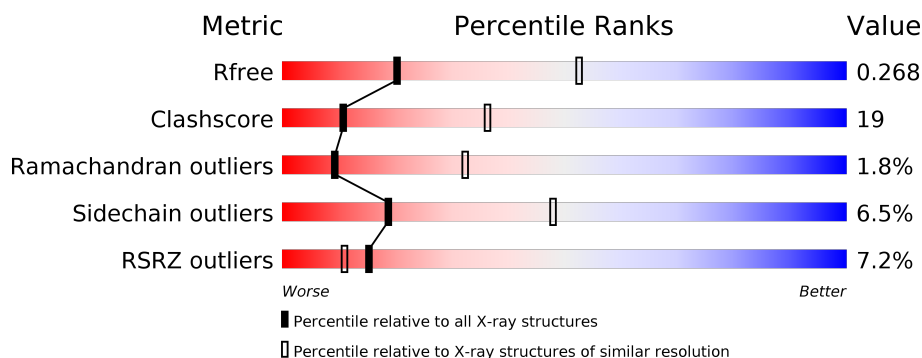
1 Overall quality at a glance

The following experimental techniques were used to determine the structure:

X-RAY DIFFRACTION

The reported resolution of this entry is 2.90 Å.

Percentile scores (ranging between 0-100) for global validation metrics of the entry are shown in the following graphic. The table shows the number of entries on which the scores are based.



Metric	Whole archive (#Entries)	Similar resolution (#Entries, resolution range(Å))
R_{free}	111664	1716 (2.90-2.90)
Clashscore	122126	1924 (2.90-2.90)
Ramachandran outliers	120053	1884 (2.90-2.90)
Sidechain outliers	120020	1886 (2.90-2.90)
RSRZ outliers	108989	1669 (2.90-2.90)

The table below summarises the geometric issues observed across the polymeric chains and their fit to the electron density. The red, orange, yellow and green segments on the lower bar indicate the fraction of residues that contain outliers for ≥ 3 , 2, 1 and 0 types of geometric quality criteria. A grey segment represents the fraction of residues that are not modelled. The numeric value for each fraction is indicated below the corresponding segment, with a dot representing fractions $\leq 5\%$. The upper red bar (where present) indicates the fraction of residues that have poor fit to the electron density. The numeric value is given above the bar.

Mol	Chain	Length	Quality of chain
1	A	776	<div> <div>6%</div> <div> <div></div> <div>55%</div> <div>35%</div> <div>• 6%</div> </div> </div>
1	B	776	<div> <div>7%</div> <div> <div></div> <div>60%</div> <div>32%</div> <div>• •</div> </div> </div>

The following table lists non-polymeric compounds, carbohydrate monomers and non-standard residues in protein, DNA, RNA chains that are outliers for geometric or electron-density-fit criteria:

Mol	Type	Chain	Res	Chirality	Geometry	Clashes	Electron density
3	NSC	A	9002	X	-	-	-
3	NSC	B	9003	X	-	-	X

2 Entry composition [i](#)

There are 3 unique types of molecules in this entry. The entry contains 12177 atoms, of which 0 are hydrogens and 0 are deuteriums.

In the tables below, the ZeroOcc column contains the number of atoms modelled with zero occupancy, the AltConf column contains the number of residues with at least one atom in alternate conformation and the Trace column contains the number of residues modelled with at most 2 atoms.

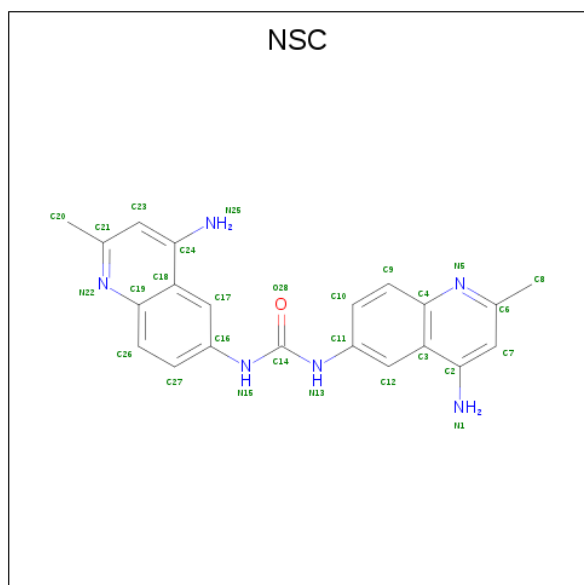
- Molecule 1 is a protein called Lethal factor.

Mol	Chain	Residues	Atoms					ZeroOcc	AltConf	Trace
1	A	732	Total	C	N	O	S	0	0	0
			6014	3825	1011	1171	7			
1	B	743	Total	C	N	O	S	0	0	0
			6105	3877	1026	1195	7			

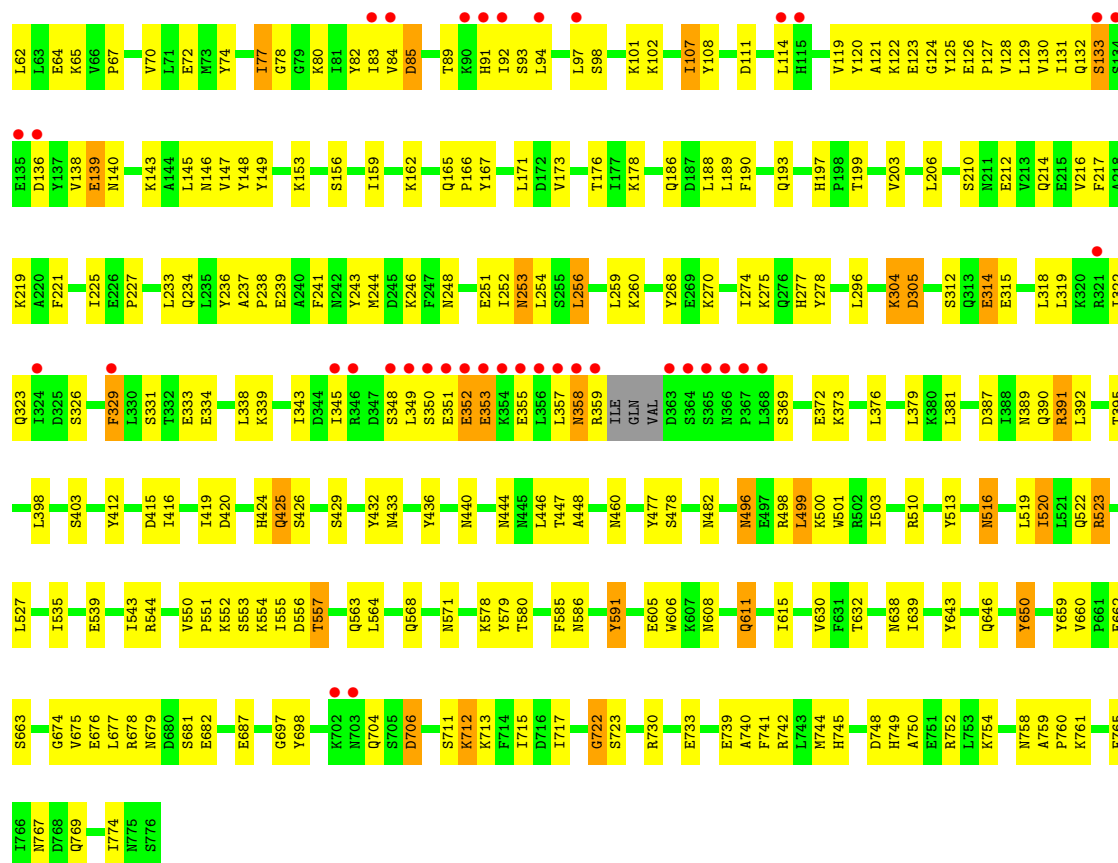
- Molecule 2 is ZINC ION (three-letter code: ZN) (formula: Zn).

Mol	Chain	Residues	Atoms		ZeroOcc	AltConf
2	B	1	Total	Zn	0	0
			1	1		
2	A	1	Total	Zn	0	0
			1	1		

- Molecule 3 is N,N'-BIS(4-AMINO-2-METHYLQUINOLIN-6-YL)UREA (three-letter code: NSC) (formula: C₂₁H₂₀N₆O).



Mol	Chain	Residues	Atoms				ZeroOcc	AltConf
3	A	1	Total	C	N	O	0	0
			28	21	6	1		
3	B	1	Total	C	N	O	0	0
			28	21	6	1		



4 Data and refinement statistics

Property	Value	Source
Space group	P 1 21 1	Depositor
Cell constants a, b, c, α , β , γ	96.70Å 137.40Å 98.30Å 90.00° 98.00° 90.00°	Depositor
Resolution (Å)	23.83 – 2.90 46.05 – 2.90	Depositor EDS
% Data completeness (in resolution range)	94.1 (23.83-2.90) 94.1 (46.05-2.90)	Depositor EDS
R_{merge}	0.11	Depositor
R_{sym}	0.50	Depositor
$\langle I/\sigma(I) \rangle$ ¹	3.08 (at 2.91Å)	Xtriage
Refinement program	CNS	Depositor
R, R_{free}	0.223 , 0.274 0.220 , 0.268	Depositor DCC
R_{free} test set	2595 reflections (4.61%)	wwPDB-VP
Wilson B-factor (Å ²)	40.4	Xtriage
Anisotropy	0.347	Xtriage
Bulk solvent k_{sol} (e/Å ³), B_{sol} (Å ²)	0.36 , 55.6	EDS
L-test for twinning ²	$\langle L \rangle = 0.48$, $\langle L^2 \rangle = 0.31$	Xtriage
Estimated twinning fraction	0.026 for l,-k,h	Xtriage
F_o, F_c correlation	0.91	EDS
Total number of atoms	12177	wwPDB-VP
Average B, all atoms (Å ²)	44.0	wwPDB-VP

Xtriage's analysis on translational NCS is as follows: *The largest off-origin peak in the Patterson function is 3.15% of the height of the origin peak. No significant pseudotranslation is detected.*

¹Intensities estimated from amplitudes.

²Theoretical values of $\langle |L| \rangle$, $\langle L^2 \rangle$ for acentric reflections are 0.5, 0.333 respectively for untwinned datasets, and 0.375, 0.2 for perfectly twinned datasets.

5 Model quality

5.1 Standard geometry

Bond lengths and bond angles in the following residue types are not validated in this section: ZN, NSC

The Z score for a bond length (or angle) is the number of standard deviations the observed value is removed from the expected value. A bond length (or angle) with $|Z| > 5$ is considered an outlier worth inspection. RMSZ is the root-mean-square of all Z scores of the bond lengths (or angles).

Mol	Chain	Bond lengths		Bond angles	
		RMSZ	$\# Z > 5$	RMSZ	$\# Z > 5$
1	A	0.38	0/6122	0.62	0/8246
1	B	0.39	0/6213	0.62	0/8368
All	All	0.39	0/12335	0.62	0/16614

There are no bond length outliers.

There are no bond angle outliers.

There are no chirality outliers.

There are no planarity outliers.

5.2 Too-close contacts

In the following table, the Non-H and H(model) columns list the number of non-hydrogen atoms and hydrogen atoms in the chain respectively. The H(added) column lists the number of hydrogen atoms added and optimized by MolProbity. The Clashes column lists the number of clashes within the asymmetric unit, whereas Symm-Clashes lists symmetry related clashes.

Mol	Chain	Non-H	H(model)	H(added)	Clashes	Symm-Clashes
1	A	6014	0	6003	253	0
1	B	6105	0	6082	218	0
2	A	1	0	0	0	0
2	B	1	0	0	0	0
3	A	28	0	20	8	0
3	B	28	0	20	7	0
All	All	12177	0	12125	473	0

The all-atom clashscore is defined as the number of clashes found per 1000 atoms (including hydrogen atoms). The all-atom clashscore for this structure is 19.

The worst 5 of 473 close contacts within the same asymmetric unit are listed below, sorted by

their clash magnitude.

Atom-1	Atom-2	Interatomic distance (Å)	Clash overlap (Å)
1:B:304:LYS:HD3	1:B:304:LYS:H	1.17	1.06
1:B:510:ARG:H	1:B:522:GLN:HE21	1.10	0.97
1:A:563:GLN:HE21	1:A:585:PHE:H	1.17	0.90
1:B:675:VAL:HG22	1:B:676:GLU:HG2	1.53	0.89
1:B:319:LEU:HD23	1:B:345:ILE:HG13	1.53	0.88

There are no symmetry-related clashes.

5.3 Torsion angles [i](#)

5.3.1 Protein backbone [i](#)

In the following table, the Percentiles column shows the percent Ramachandran outliers of the chain as a percentile score with respect to all X-ray entries followed by that with respect to entries of similar resolution.

The Analysed column shows the number of residues for which the backbone conformation was analysed, and the total number of residues.

Mol	Chain	Analysed	Favoured	Allowed	Outliers	Percentiles	
1	A	728/776 (94%)	643 (88%)	69 (10%)	16 (2%)	7	27
1	B	739/776 (95%)	652 (88%)	76 (10%)	11 (2%)	11	37
All	All	1467/1552 (94%)	1295 (88%)	145 (10%)	27 (2%)	9	32

5 of 27 Ramachandran outliers are listed below:

Mol	Chain	Res	Type
1	A	251	GLU
1	B	138	VAL
1	A	53	ALA
1	A	198	PRO
1	A	310	SER

5.3.2 Protein sidechains [i](#)

In the following table, the Percentiles column shows the percent sidechain outliers of the chain as a percentile score with respect to all X-ray entries followed by that with respect to entries of similar resolution.

The Analysed column shows the number of residues for which the sidechain conformation was analysed, and the total number of residues.

Mol	Chain	Analysed	Rotameric	Outliers	Percentiles	
1	A	671/710 (94%)	626 (93%)	45 (7%)	18	46
1	B	682/710 (96%)	639 (94%)	43 (6%)	20	50
All	All	1353/1420 (95%)	1265 (94%)	88 (6%)	19	48

5 of 88 residues with a non-rotameric sidechain are listed below:

Mol	Chain	Res	Type
1	A	626	ASN
1	B	107	ILE
1	B	608	ASN
1	A	636	LEU
1	A	712	LYS

Some sidechains can be flipped to improve hydrogen bonding and reduce clashes. 5 of 68 such sidechains are listed below:

Mol	Chain	Res	Type
1	B	42	HIS
1	B	242	ASN
1	B	645	HIS
1	B	91	HIS
1	B	209	ASN

5.3.3 RNA ⓘ

There are no RNA molecules in this entry.

5.4 Non-standard residues in protein, DNA, RNA chains ⓘ

There are no non-standard protein/DNA/RNA residues in this entry.

5.5 Carbohydrates ⓘ

There are no carbohydrates in this entry.

5.6 Ligand geometry

Of 4 ligands modelled in this entry, 2 are monoatomic - leaving 2 for Mogul analysis.

In the following table, the Counts columns list the number of bonds (or angles) for which Mogul statistics could be retrieved, the number of bonds (or angles) that are observed in the model and the number of bonds (or angles) that are defined in the Chemical Component Dictionary. The Link column lists molecule types, if any, to which the group is linked. The Z score for a bond length (or angle) is the number of standard deviations the observed value is removed from the expected value. A bond length (or angle) with $|Z| > 2$ is considered an outlier worth inspection. RMSZ is the root-mean-square of all Z scores of the bond lengths (or angles).

Mol	Type	Chain	Res	Link	Bond lengths			Bond angles		
					Counts	RMSZ	# Z > 2	Counts	RMSZ	# Z > 2
3	NSC	A	9002	-	31,31,31	1.46	6 (19%)	41,45,45	1.34	8 (19%)
3	NSC	B	9003	-	31,31,31	1.46	6 (19%)	41,45,45	1.34	7 (17%)

In the following table, the Chirals column lists the number of chiral outliers, the number of chiral centers analysed, the number of these observed in the model and the number defined in the Chemical Component Dictionary. Similar counts are reported in the Torsion and Rings columns. '-' means no outliers of that kind were identified.

Mol	Type	Chain	Res	Link	Chirals	Torsions	Rings
3	NSC	A	9002	-	6/6/1/3	0/8/8/8	0/4/4/4
3	NSC	B	9003	-	6/6/1/3	0/8/8/8	0/4/4/4

The worst 5 of 12 bond length outliers are listed below:

Mol	Chain	Res	Type	Atoms	Z	Observed(Å)	Ideal(Å)
3	B	9003	NSC	C16-N15	-2.92	1.35	1.41
3	A	9002	NSC	C11-N13	-2.90	1.35	1.41
3	A	9002	NSC	C16-N15	-2.89	1.35	1.41
3	B	9003	NSC	C11-N13	-2.77	1.36	1.41
3	A	9002	NSC	C26-C27	2.12	1.41	1.36

The worst 5 of 15 bond angle outliers are listed below:

Mol	Chain	Res	Type	Atoms	Z	Observed(°)	Ideal(°)
3	A	9002	NSC	C12-C3-C2	-2.57	120.98	123.10
3	B	9003	NSC	C3-C4-N5	-2.56	120.07	122.83
3	B	9003	NSC	C12-C3-C2	-2.56	120.98	123.10
3	A	9002	NSC	C3-C4-N5	-2.53	120.10	122.83
3	B	9003	NSC	C18-C19-N22	-2.48	120.16	122.83

5 of 12 chirality outliers are listed below:

Mol	Chain	Res	Type	Atom
3	B	9003	NSC	C6
3	B	9003	NSC	C24
3	B	9003	NSC	C18
3	B	9003	NSC	C19
3	B	9003	NSC	C16

There are no torsion outliers.

There are no ring outliers.

2 monomers are involved in 15 short contacts:

Mol	Chain	Res	Type	Clashes	Symm-Clashes
3	A	9002	NSC	8	0
3	B	9003	NSC	7	0

5.7 Other polymers [i](#)

There are no such residues in this entry.

5.8 Polymer linkage issues [i](#)

There are no chain breaks in this entry.

6 Fit of model and data [i](#)

6.1 Protein, DNA and RNA chains [i](#)

In the following table, the column labelled ‘#RSRZ> 2’ contains the number (and percentage) of RSRZ outliers, followed by percent RSRZ outliers for the chain as percentile scores relative to all X-ray entries and entries of similar resolution. The OWAB column contains the minimum, median, 95th percentile and maximum values of the occupancy-weighted average B-factor per residue. The column labelled ‘Q< 0.9’ lists the number of (and percentage) of residues with an average occupancy less than 0.9.

Mol	Chain	Analysed	<RSRZ>	#RSRZ>2	OWAB(Å ²)	Q<0.9
1	A	732/776 (94%)	0.16	50 (6%) 17 13	8, 39, 94, 125	0
1	B	743/776 (95%)	0.17	56 (7%) 14 10	9, 37, 91, 101	0
All	All	1475/1552 (95%)	0.17	106 (7%) 15 11	8, 39, 92, 125	0

The worst 5 of 106 RSRZ outliers are listed below:

Mol	Chain	Res	Type	RSRZ
1	A	319	LEU	6.2
1	B	352	GLU	6.1
1	B	358	ASN	5.7
1	B	349	LEU	5.7
1	B	37	LYS	5.5

6.2 Non-standard residues in protein, DNA, RNA chains [i](#)

There are no non-standard protein/DNA/RNA residues in this entry.

6.3 Carbohydrates [i](#)

There are no carbohydrates in this entry.

6.4 Ligands [i](#)

In the following table, the Atoms column lists the number of modelled atoms in the group and the number defined in the chemical component dictionary. The B-factors column lists the minimum, median, 95th percentile and maximum values of B factors of atoms in the group. The column labelled ‘Q< 0.9’ lists the number of atoms with occupancy less than 0.9.

Mol	Type	Chain	Res	Atoms	RSCC	RSR	B-factors(\AA^2)	Q<0.9
3	NSC	B	9003	28/28	0.70	0.50	76,80,88,88	0
3	NSC	A	9002	28/28	0.78	0.40	75,80,87,87	0
2	ZN	B	9002	1/1	1.00	0.14	27,27,27,27	0
2	ZN	A	9001	1/1	1.00	0.20	37,37,37,37	0

6.5 Other polymers [i](#)

There are no such residues in this entry.