



Full wwPDB X-ray Structure Validation Report ⓘ

Aug 28, 2019 – 09:38 AM EDT

PDB ID : 6PYR
Title : Human PI3Kdelta in complex with Compound 2-10 ((3S)-3-benzyl-3-methyl-5-[5-(2-methylpyrimidin-5-yl)pyrazolo[1,5-a]pyrimidin-3-yl]-1,3-dihydro-2H-indol-2-one)
Authors : Lesburg, C.A.; Augustin, M.A.
Deposited on : 2019-07-30
Resolution : 2.21 Å(reported)

This is a Full wwPDB X-ray Structure Validation Report for a publicly released PDB entry.

We welcome your comments at validation@mail.wwpdb.org

A user guide is available at

<https://www.wwpdb.org/validation/2017/XrayValidationReportHelp>

with specific help available everywhere you see the ⓘ symbol.

The following versions of software and data (see [references ⓘ](#)) were used in the production of this report:

MolProbity : 4.02b-467
Mogul : 1.8.0 (224370), CSD as540be (2019)
Xtriage (Phenix) : 1.13
EDS : 2.4
buster-report : 1.1.7 (2018)
Percentile statistics : 20171227.v01 (using entries in the PDB archive December 27th 2017)
Refmac : 5.8.0158
CCP4 : 7.0 (Gargrove)
Ideal geometry (proteins) : Engh & Huber (2001)
Ideal geometry (DNA, RNA) : Parkinson et al. (1996)
Validation Pipeline (wwPDB-VP) : 2.4

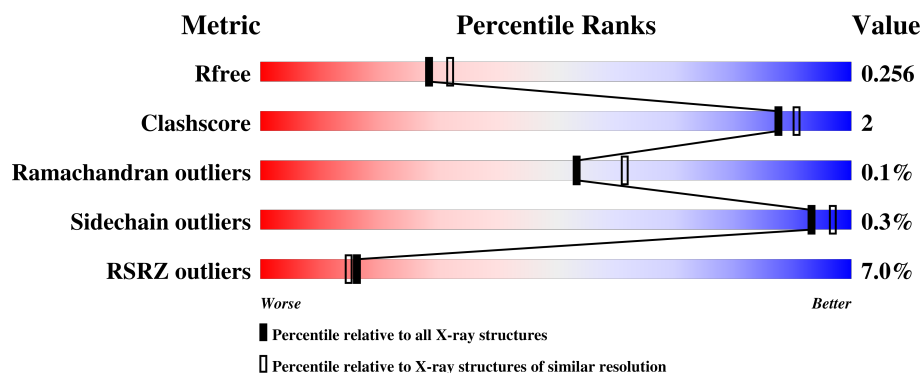
1 Overall quality at a glance

The following experimental techniques were used to determine the structure:

X-RAY DIFFRACTION

The reported resolution of this entry is 2.21 Å.

Percentile scores (ranging between 0-100) for global validation metrics of the entry are shown in the following graphic. The table shows the number of entries on which the scores are based.



Metric	Whole archive (#Entries)	Similar resolution (#Entries, resolution range(Å))
R_{free}	111664	5192 (2.24-2.20)
Clashscore	122126	5911 (2.24-2.20)
Ramachandran outliers	120053	5828 (2.24-2.20)
Sidechain outliers	120020	5829 (2.24-2.20)
RSRZ outliers	108989	5078 (2.24-2.20)

The table below summarises the geometric issues observed across the polymeric chains and their fit to the electron density. The red, orange, yellow and green segments on the lower bar indicate the fraction of residues that contain outliers for ≥ 3 , 2, 1 and 0 types of geometric quality criteria. A grey segment represents the fraction of residues that are not modelled. The numeric value for each fraction is indicated below the corresponding segment, with a dot representing fractions $\leq 5\%$. The upper red bar (where present) indicates the fraction of residues that have poor fit to the electron density. The numeric value is given above the bar.

Mol	Chain	Length	Quality of chain
1	A	1018	
2	B	169	

2 Entry composition

There are 4 unique types of molecules in this entry. The entry contains 9064 atoms, of which 0 are hydrogens and 0 are deuteriums.

In the tables below, the ZeroOcc column contains the number of atoms modelled with zero occupancy, the AltConf column contains the number of residues with at least one atom in alternate conformation and the Trace column contains the number of residues modelled with at most 2 atoms.

- Molecule 1 is a protein called Phosphatidylinositol 4,5-bisphosphate 3-kinase catalytic subunit delta isoform.

Mol	Chain	Residues	Atoms					ZeroOcc	AltConf	Trace
1	A	933	Total	C	N	O	S	325	1	0
			7547	4827	1287	1380	53			

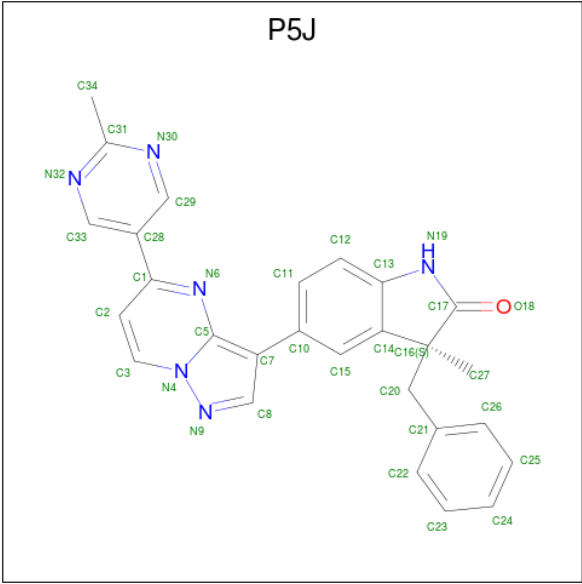
- Molecule 2 is a protein called Phosphatidylinositol 3-kinase regulatory subunit alpha.

Mol	Chain	Residues	Atoms					ZeroOcc	AltConf	Trace
2	B	163	Total	C	N	O	S	68	0	0
			1416	881	256	274	5			

There are 4 discrepancies between the modelled and reference sequences:

Chain	Residue	Modelled	Actual	Comment	Reference
B	469	ASP	GLU	conflict	UNP P27986
B	519	THR	LYS	conflict	UNP P27986
B	529	GLU	ASP	conflict	UNP P27986
B	539	VAL	ILE	conflict	UNP P27986

- Molecule 3 is (3S)-3-benzyl-3-methyl-5-[5-(2-methylpyrimidin-5-yl)pyrazolo[1,5-a]pyrimidin-3-yl]-1,3-dihydro-2H-indol-2-one (three-letter code: P5J) (formula: C₂₇H₂₂N₆O).



Mol	Chain	Residues	Atoms				ZeroOcc	AltConf
3	A	1	Total	C	N	O	0	0
			34	27	6	1		

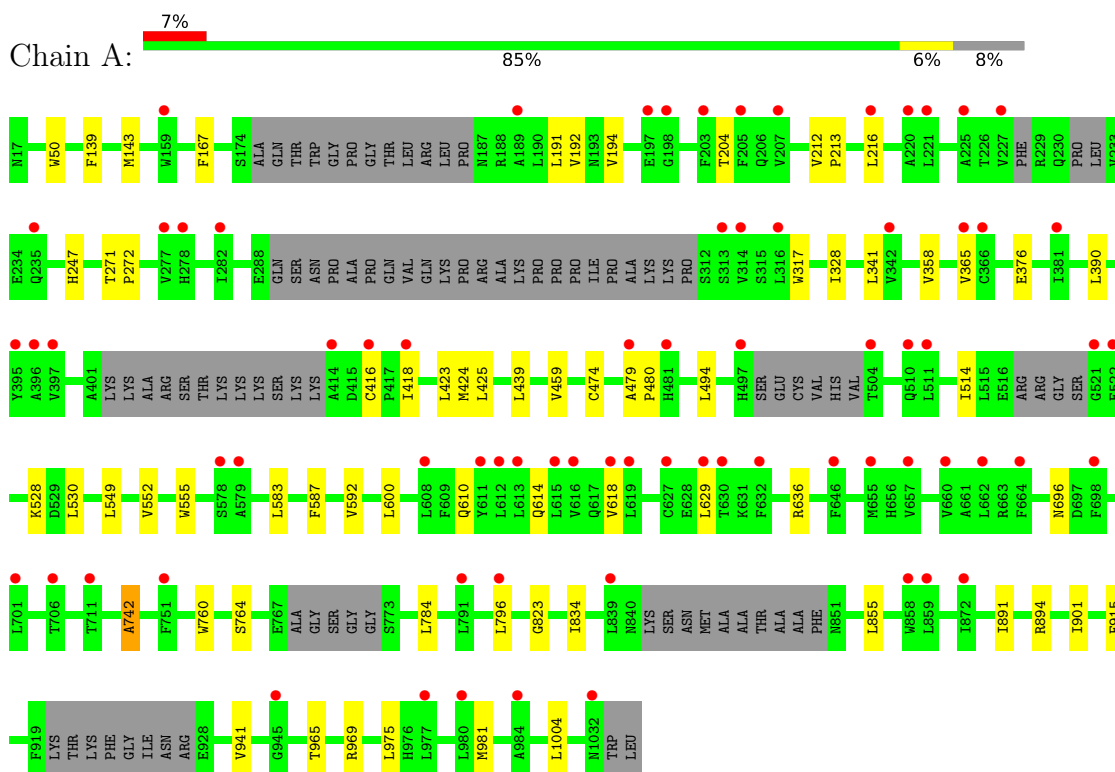
- Molecule 4 is water.

Mol	Chain	Residues	Atoms		ZeroOcc	AltConf
4	A	61	Total	O	0	0
			61	61		
4	B	6	Total	O	0	0
			6	6		

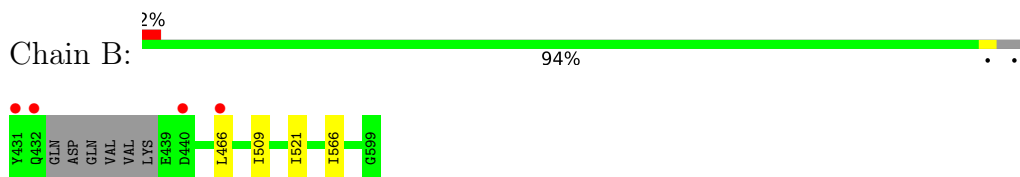
3 Residue-property plots [i](#)

These plots are drawn for all protein, RNA and DNA chains in the entry. The first graphic for a chain summarises the proportions of the various outlier classes displayed in the second graphic. The second graphic shows the sequence view annotated by issues in geometry and electron density. Residues are color-coded according to the number of geometric quality criteria for which they contain at least one outlier: green = 0, yellow = 1, orange = 2 and red = 3 or more. A red dot above a residue indicates a poor fit to the electron density ($RSRZ > 2$). Stretches of 2 or more consecutive residues without any outlier are shown as a green connector. Residues present in the sample, but not in the model, are shown in grey.

- Molecule 1: Phosphatidylinositol 4,5-bisphosphate 3-kinase catalytic subunit delta isoform



- Molecule 2: Phosphatidylinositol 3-kinase regulatory subunit alpha



4 Data and refinement statistics

Property	Value	Source
Space group	P 21 21 21	Depositor
Cell constants a, b, c, α , β , γ	90.47Å 108.08Å 142.35Å 90.00° 90.00° 90.00°	Depositor
Resolution (Å)	86.08 – 2.21 46.39 – 2.21	Depositor EDS
% Data completeness (in resolution range)	99.3 (86.08-2.21) 99.3 (46.39-2.21)	Depositor EDS
R_{merge}	0.04	Depositor
R_{sym}	(Not available)	Depositor
$\langle I/\sigma(I) \rangle$ ¹	1.71 (at 2.20Å)	Xtriage
Refinement program	REFMAC 5.6.0117	Depositor
R, R_{free}	0.221 , 0.259 0.223 , 0.256	Depositor DCC
R_{free} test set	1467 reflections (2.10%)	wwPDB-VP
Wilson B-factor (Å ²)	59.4	Xtriage
Anisotropy	0.429	Xtriage
Bulk solvent k_{sol} (e/Å ³), B_{sol} (Å ²)	0.31 , 55.7	EDS
L-test for twinning ²	$\langle L \rangle = 0.49$, $\langle L^2 \rangle = 0.32$	Xtriage
Estimated twinning fraction	No twinning to report.	Xtriage
F_o, F_c correlation	0.96	EDS
Total number of atoms	9064	wwPDB-VP
Average B, all atoms (Å ²)	78.0	wwPDB-VP

Xtriage's analysis on translational NCS is as follows: *The largest off-origin peak in the Patterson function is 3.26% of the height of the origin peak. No significant pseudotranslation is detected.*

¹Intensities estimated from amplitudes.

²Theoretical values of $\langle |L| \rangle$, $\langle L^2 \rangle$ for acentric reflections are 0.5, 0.333 respectively for untwinned datasets, and 0.375, 0.2 for perfectly twinned datasets.

5 Model quality [i](#)

5.1 Standard geometry [i](#)

Bond lengths and bond angles in the following residue types are not validated in this section: P5J

The Z score for a bond length (or angle) is the number of standard deviations the observed value is removed from the expected value. A bond length (or angle) with $|Z| > 5$ is considered an outlier worth inspection. RMSZ is the root-mean-square of all Z scores of the bond lengths (or angles).

Mol	Chain	Bond lengths		Bond angles	
		RMSZ	$\# Z > 5$	RMSZ	$\# Z > 5$
1	A	0.53	2/7708 (0.0%)	0.59	1/10417 (0.0%)
2	B	0.48	0/1435	0.58	0/1912
All	All	0.53	2/9143 (0.0%)	0.59	1/12329 (0.0%)

All (2) bond length outliers are listed below:

Mol	Chain	Res	Type	Atoms	Z	Observed(Å)	Ideal(Å)
1	A	760	TRP	CD2-CE2	5.19	1.47	1.41
1	A	555	TRP	CD2-CE2	5.14	1.47	1.41

All (1) bond angle outliers are listed below:

Mol	Chain	Res	Type	Atoms	Z	Observed(°)	Ideal(°)
1	A	636	ARG	NE-CZ-NH1	5.01	122.81	120.30

There are no chirality outliers.

There are no planarity outliers.

5.2 Too-close contacts [i](#)

In the following table, the Non-H and H(model) columns list the number of non-hydrogen atoms and hydrogen atoms in the chain respectively. The H(added) column lists the number of hydrogen atoms added and optimized by MolProbity. The Clashes column lists the number of clashes within the asymmetric unit, whereas Symm-Clashes lists symmetry related clashes.

Mol	Chain	Non-H	H(model)	H(added)	Clashes	Symm-Clashes
1	A	7547	0	7524	35	0
2	B	1416	0	1404	3	0
3	A	34	0	0	0	0

Continued on next page...

Continued from previous page...

Mol	Chain	Non-H	H(model)	H(added)	Clashes	Symm-Clashes
4	A	61	0	0	0	0
4	B	6	0	0	0	0
All	All	9064	0	8928	38	0

The all-atom clashscore is defined as the number of clashes found per 1000 atoms (including hydrogen atoms). The all-atom clashscore for this structure is 2.

All (38) close contacts within the same asymmetric unit are listed below, sorted by their clash magnitude.

Atom-1	Atom-2	Interatomic distance (Å)	Clash overlap (Å)
1:A:192:VAL:HG11	1:A:216:LEU:HD11	1.68	0.76
1:A:855:LEU:HD22	1:A:941:VAL:HG21	1.74	0.70
2:B:466:LEU:HD12	2:B:566:ILE:HD12	1.77	0.66
2:B:509:ILE:HD12	2:B:521:ILE:HG23	1.77	0.65
1:A:423:LEU:HD13	1:A:439:LEU:HD21	1.80	0.64
1:A:618:VAL:HG23	1:A:629:LEU:HD21	1.81	0.61
1:A:583:LEU:HD11	1:A:600:LEU:HD11	1.83	0.60
1:A:192:VAL:HG23	1:A:272:PRO:HB2	1.83	0.59
1:A:610:GLN:HG2	1:A:796:LEU:HD13	1.85	0.57
1:A:191:LEU:HD11	1:A:271:THR:HG21	1.88	0.55
1:A:587:PHE:HB3	1:A:592:VAL:HG11	1.91	0.51
1:A:891:ILE:HG22	1:A:894:ARG:HD3	1.95	0.49
1:A:834:ILE:CD1	1:A:901:ILE:HD11	2.43	0.49
1:A:614:GLN:HE21	1:A:981:MET:CG	2.26	0.48
1:A:194:VAL:HG21	1:A:216:LEU:HD21	1.96	0.48
1:A:784:LEU:HD12	1:A:823:GLY:HA3	1.95	0.47
1:A:618:VAL:HG23	1:A:629:LEU:CD2	2.44	0.47
1:A:191:LEU:HD13	1:A:204:THR:CG2	2.46	0.46
1:A:514:ILE:HD12	1:A:530:LEU:HD23	1.98	0.45
1:A:975:LEU:HD11	1:A:1004:LEU:HD12	1.99	0.45
1:A:341:LEU:HG	1:A:365:VAL:HG22	1.99	0.45
1:A:528:LYS:HG2	1:A:552:VAL:HG12	1.99	0.44
1:A:514:ILE:CD1	1:A:530:LEU:HD23	2.47	0.44
1:A:317:TRP:CZ3	1:A:494:LEU:HD22	2.52	0.44
1:A:328:ILE:HD11	1:A:474:CYS:HB2	2.00	0.44
1:A:390:LEU:HB2	1:A:425:LEU:HD21	2.01	0.43
1:A:212:VAL:HG13	1:A:213:PRO:HD2	2.00	0.43
2:B:466:LEU:CD1	2:B:566:ILE:HD12	2.45	0.43
1:A:167:PHE:CE1	1:A:247:HIS:HB3	2.55	0.42
1:A:194:VAL:CG2	1:A:216:LEU:HD21	2.50	0.42
1:A:549:LEU:O	1:A:552:VAL:HG22	2.20	0.41

Continued on next page...

Continued from previous page...

Atom-1	Atom-2	Interatomic distance (Å)	Clash overlap (Å)
1:A:424:MET:SD	1:A:459:VAL:HG11	2.60	0.41
1:A:742:ALA:HB3	1:A:764:SER:O	2.20	0.41
1:A:965:THR:HG22	1:A:969:ARG:NH1	2.36	0.41
1:A:479:ALA:HB1	1:A:480:PRO:HD2	2.03	0.41
1:A:139:PHE:CZ	1:A:143:MET:HG3	2.55	0.41
1:A:358:VAL:HG21	1:A:376:GLU:O	2.22	0.40
1:A:416:CYS:SG	1:A:418:ILE:HD13	2.62	0.40

There are no symmetry-related clashes.

5.3 Torsion angles [i](#)

5.3.1 Protein backbone [i](#)

In the following table, the Percentiles column shows the percent Ramachandran outliers of the chain as a percentile score with respect to all X-ray entries followed by that with respect to entries of similar resolution.

The Analysed column shows the number of residues for which the backbone conformation was analysed, and the total number of residues.

Mol	Chain	Analysed	Favoured	Allowed	Outliers	Percentiles	
1	A	912/1018 (90%)	892 (98%)	19 (2%)	1 (0%)	53	61
2	B	159/169 (94%)	159 (100%)	0	0	100	100
All	All	1071/1187 (90%)	1051 (98%)	19 (2%)	1 (0%)	53	61

All (1) Ramachandran outliers are listed below:

Mol	Chain	Res	Type
1	A	742	ALA

5.3.2 Protein sidechains [i](#)

In the following table, the Percentiles column shows the percent sidechain outliers of the chain as a percentile score with respect to all X-ray entries followed by that with respect to entries of similar resolution.

The Analysed column shows the number of residues for which the sidechain conformation was analysed, and the total number of residues.

Mol	Chain	Analysed	Rotameric	Outliers	Percentiles	
1	A	836/903 (93%)	833 (100%)	3 (0%)	92	96
2	B	154/160 (96%)	154 (100%)	0	100	100
All	All	990/1063 (93%)	987 (100%)	3 (0%)	93	97

All (3) residues with a non-rotameric sidechain are listed below:

Mol	Chain	Res	Type
1	A	50	TRP
1	A	696	ASN
1	A	915	PHE

Some sidechains can be flipped to improve hydrogen bonding and reduce clashes. All (7) such sidechains are listed below:

Mol	Chain	Res	Type
1	A	33	ASN
1	A	344	GLN
1	A	732	GLN
1	A	803	GLN
1	A	906	GLN
2	B	475	GLN
2	B	572	GLN

5.3.3 RNA [i](#)

There are no RNA molecules in this entry.

5.4 Non-standard residues in protein, DNA, RNA chains [i](#)

There are no non-standard protein/DNA/RNA residues in this entry.

5.5 Carbohydrates [i](#)

There are no carbohydrates in this entry.

5.6 Ligand geometry [i](#)

1 ligand is modelled in this entry.

In the following table, the Counts columns list the number of bonds (or angles) for which Mogul statistics could be retrieved, the number of bonds (or angles) that are observed in the model and the number of bonds (or angles) that are defined in the Chemical Component Dictionary. The Link column lists molecule types, if any, to which the group is linked. The Z score for a bond length (or angle) is the number of standard deviations the observed value is removed from the expected value. A bond length (or angle) with $|Z| > 2$ is considered an outlier worth inspection. RMSZ is the root-mean-square of all Z scores of the bond lengths (or angles).

Mol	Type	Chain	Res	Link	Bond lengths			Bond angles		
					Counts	RMSZ	$\# Z > 2$	Counts	RMSZ	$\# Z > 2$
3	P5J	A	1101	-	34,39,39	0.75	0	46,58,58	1.82	11 (23%)

In the following table, the Chirals column lists the number of chiral outliers, the number of chiral centers analysed, the number of these observed in the model and the number defined in the Chemical Component Dictionary. Similar counts are reported in the Torsion and Rings columns. '-' means no outliers of that kind were identified.

Mol	Type	Chain	Res	Link	Chirals	Torsions	Rings
3	P5J	A	1101	-	-	4/13/29/29	0/6/6/6

There are no bond length outliers.

All (11) bond angle outliers are listed below:

Mol	Chain	Res	Type	Atoms	Z	Observed($^{\circ}$)	Ideal($^{\circ}$)
3	A	1101	P5J	C8-N9-N4	6.76	108.62	103.70
3	A	1101	P5J	C34-C31-N32	3.43	120.91	117.14
3	A	1101	P5J	C12-C13-C14	-3.18	118.97	121.92
3	A	1101	P5J	C29-N30-C31	3.13	121.30	115.96
3	A	1101	P5J	C16-C14-C13	-3.13	106.29	109.35
3	A	1101	P5J	C33-N32-C31	3.01	121.08	115.96
3	A	1101	P5J	C28-C33-N32	-2.88	119.44	124.24
3	A	1101	P5J	C14-C16-C17	2.88	103.66	101.85
3	A	1101	P5J	C28-C29-N30	-2.65	119.82	124.24
3	A	1101	P5J	N32-C31-N30	-2.37	121.52	125.51
3	A	1101	P5J	C1-N6-C5	2.22	121.55	118.02

There are no chirality outliers.

All (4) torsion outliers are listed below:

Mol	Chain	Res	Type	Atoms
3	A	1101	P5J	C11-C10-C7-C5
3	A	1101	P5J	C15-C10-C7-C5
3	A	1101	P5J	C15-C10-C7-C8

Continued on next page...

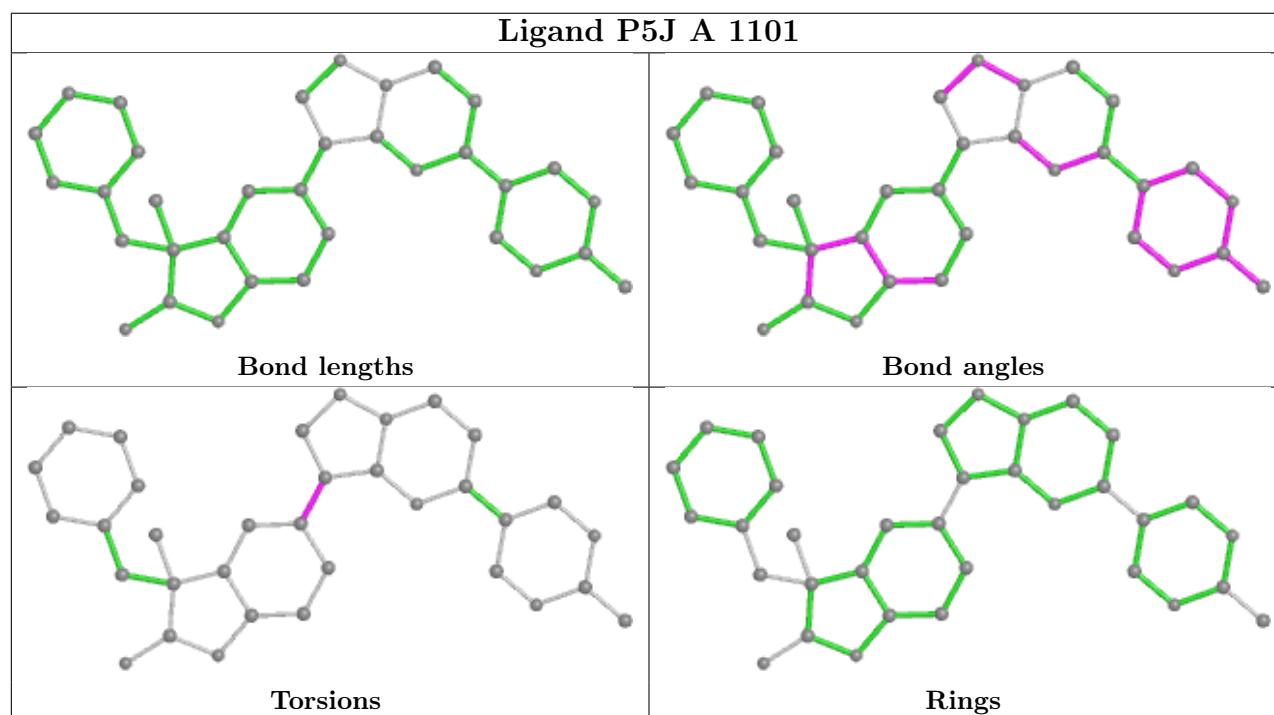
Continued from previous page...

Mol	Chain	Res	Type	Atoms
3	A	1101	P5J	C11-C10-C7-C8

There are no ring outliers.

No monomer is involved in short contacts.

The following is a two-dimensional graphical depiction of Mogul quality analysis of bond lengths, bond angles, torsion angles, and ring geometry for all instances of the Ligand of Interest. In addition, ligands with molecular weight > 250 and outliers as shown on the validation Tables will also be included. For torsion angles, if less than 5% of the Mogul distribution of torsion angles is within 10 degrees of the torsion angle in question, then that torsion angle is considered an outlier. Any bond that is central to one or more torsion angles identified as an outlier by Mogul will be highlighted in the graph. For rings, the root-mean-square deviation (RMSD) between the ring in question and similar rings identified by Mogul is calculated over all ring torsion angles. If the average RMSD is greater than 60 degrees and the minimal RMSD between the ring in question and any Mogul-identified rings is also greater than 60 degrees, then that ring is considered an outlier. The outliers are highlighted in purple. The color gray indicates Mogul did not find sufficient equivalents in the CSD to analyse the geometry.



5.7 Other polymers [i](#)

There are no such residues in this entry.

5.8 Polymer linkage issues

There are no chain breaks in this entry.

6 Fit of model and data

6.1 Protein, DNA and RNA chains

In the following table, the column labelled ‘#RSRZ> 2’ contains the number (and percentage) of RSRZ outliers, followed by percent RSRZ outliers for the chain as percentile scores relative to all X-ray entries and entries of similar resolution. The OWAB column contains the minimum, median, 95th percentile and maximum values of the occupancy-weighted average B-factor per residue. The column labelled ‘Q< 0.9’ lists the number of (and percentage) of residues with an average occupancy less than 0.9.

Mol	Chain	Analysed	<RSRZ>	#RSRZ>2	OWAB(Å ²)	Q<0.9
1	A	933/1018 (91%)	0.45	73 (7%) 13 11	45, 74, 124, 186	109 (11%)
2	B	163/169 (96%)	0.22	4 (2%) 57 55	54, 74, 104, 135	24 (14%)
All	All	1096/1187 (92%)	0.42	77 (7%) 16 15	45, 74, 121, 186	133 (12%)

All (77) RSRZ outliers are listed below:

Mol	Chain	Res	Type	RSRZ
1	A	198	GLY	6.1
1	A	227	VAL	5.5
1	A	416	CYS	4.8
1	A	701	LEU	4.7
1	A	839	LEU	4.6
1	A	313	SER	4.5
2	B	431	TYR	4.3
1	A	220	ALA	4.2
1	A	414	ALA	4.1
1	A	511	LEU	4.1
1	A	504	THR	4.0
1	A	316	LEU	3.8
1	A	203	PHE	3.5
2	B	466	LEU	3.2
1	A	205	PHE	3.2
1	A	613	LEU	3.1
1	A	342	VAL	3.1
2	B	432	GLN	3.0
1	A	977	LEU	3.0
1	A	608	LEU	2.9
1	A	381	ILE	2.8
1	A	314	VAL	2.8
1	A	616	VAL	2.8
1	A	611	TYR	2.8

Continued on next page...

Continued from previous page...

Mol	Chain	Res	Type	RSRZ
1	A	277	VAL	2.8
1	A	945	GLY	2.8
1	A	1032	ASN	2.7
1	A	618	VAL	2.7
1	A	282	ILE	2.6
1	A	706	THR	2.6
1	A	711	THR	2.6
1	A	225	ALA	2.6
1	A	395	TYR	2.6
1	A	366	CYS	2.6
1	A	216	LEU	2.6
1	A	521	GLY	2.5
1	A	858	TRP	2.5
1	A	481	HIS	2.5
1	A	872	ILE	2.4
1	A	396	ALA	2.4
1	A	522	GLU	2.4
1	A	479	ALA	2.4
1	A	207	VAL	2.4
1	A	796	LEU	2.4
1	A	630	THR	2.4
1	A	698	PHE	2.3
1	A	510	GLN	2.3
1	A	189	ALA	2.3
1	A	612	LEU	2.3
1	A	629	LEU	2.3
1	A	859	LEU	2.3
1	A	646	PHE	2.2
1	A	365	VAL	2.2
1	A	397	VAL	2.2
1	A	632	PHE	2.1
1	A	984	ALA	2.1
1	A	660	VAL	2.1
1	A	221	LEU	2.1
1	A	619	LEU	2.1
1	A	980	LEU	2.1
1	A	197	GLU	2.1
1	A	579	ALA	2.1
1	A	627	CYS	2.1
1	A	791	LEU	2.1
2	B	440	ASP	2.1
1	A	657	VAL	2.1

Continued on next page...

Continued from previous page...

Mol	Chain	Res	Type	RSRZ
1	A	159	TRP	2.1
1	A	751	PHE	2.1
1	A	662	LEU	2.0
1	A	578	SER	2.0
1	A	278	HIS	2.0
1	A	497	HIS	2.0
1	A	664	PHE	2.0
1	A	418	ILE	2.0
1	A	615	LEU	2.0
1	A	235	GLN	2.0
1	A	655	MET	2.0

6.2 Non-standard residues in protein, DNA, RNA chains [i](#)

There are no non-standard protein/DNA/RNA residues in this entry.

6.3 Carbohydrates [i](#)

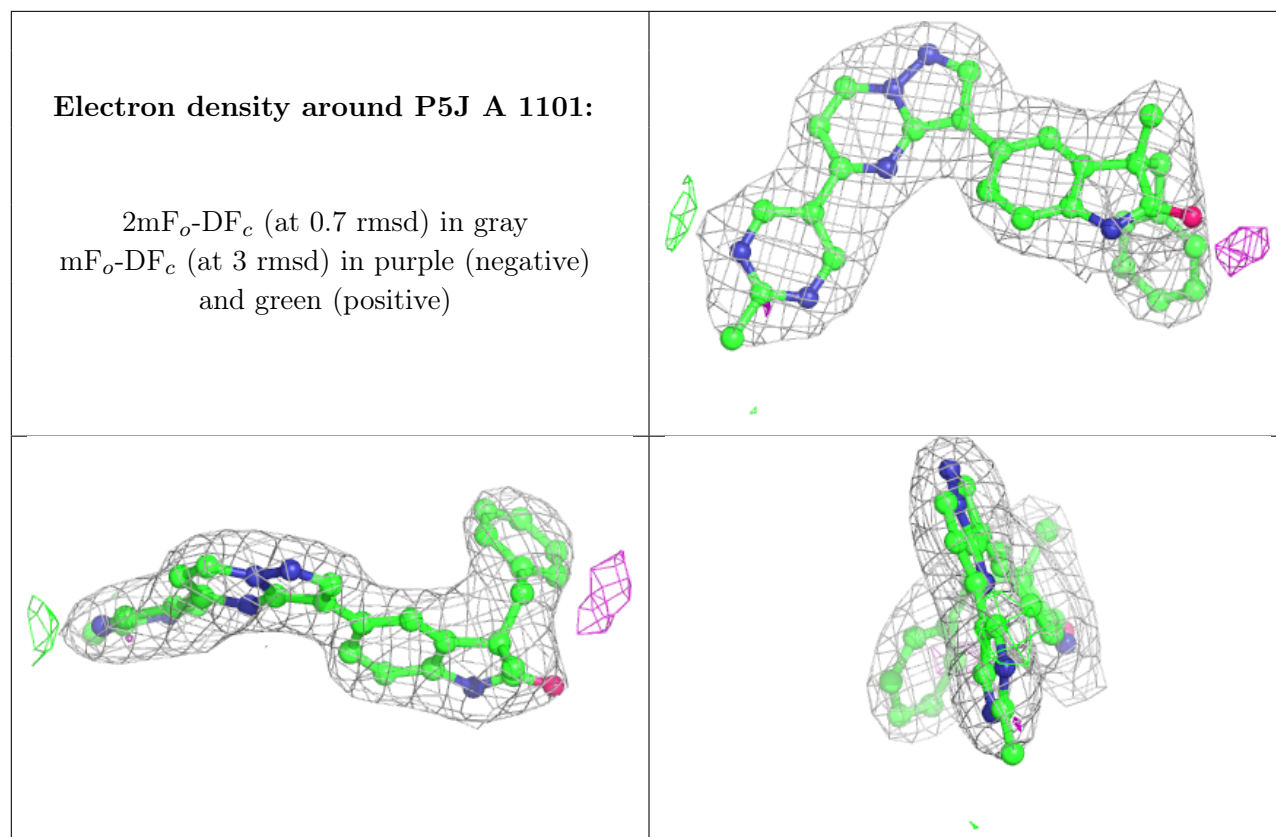
There are no carbohydrates in this entry.

6.4 Ligands [i](#)

In the following table, the Atoms column lists the number of modelled atoms in the group and the number defined in the chemical component dictionary. The B-factors column lists the minimum, median, 95th percentile and maximum values of B factors of atoms in the group. The column labelled 'Q<0.9' lists the number of atoms with occupancy less than 0.9.

Mol	Type	Chain	Res	Atoms	RSCC	RSR	B-factors(\AA^2)	Q<0.9
3	P5J	A	1101	34/34	0.95	0.13	42,56,75,86	0

The following is a graphical depiction of the model fit to experimental electron density of all instances of the Ligand of Interest. In addition, ligands with molecular weight > 250 and outliers as shown on the geometry validation Tables will also be included. Each fit is shown from different orientation to approximate a three-dimensional view.



6.5 Other polymers [i](#)

There are no such residues in this entry.