



# Full wwPDB X-ray Structure Validation Report ⓘ

Mar 9, 2018 – 04:58 am GMT

PDB ID : 1Q1Q  
Title : Crystal structure of human pregnenolone sulfotransferase (SULT2B1a) in the presence of PAP  
Authors : Lee, K.A.; Fuda, H.; Lee, Y.C.; Negishi, M.; Strott, C.A.; Pedersen, L.C.  
Deposited on : 2003-07-22  
Resolution : 2.91 Å(reported)

This is a Full wwPDB X-ray Structure Validation Report for a publicly released PDB entry.

We welcome your comments at [validation@mail.wwpdb.org](mailto:validation@mail.wwpdb.org)

A user guide is available at

<https://www.wwpdb.org/validation/2017/XrayValidationReportHelp>

with specific help available everywhere you see the ⓘ symbol.

---

The following versions of software and data (see [references ⓘ](#)) were used in the production of this report:

MolProbity : 4.02b-467  
Mogul : 1.7.3 (157068), CSD as539be (2018)  
Xtriage (Phenix) : 1.13  
EDS : trunk30967  
Percentile statistics : 20171227.v01 (using entries in the PDB archive December 27th 2017)  
Refmac : 5.8.0158  
CCP4 : 7.0 (Gargrove)  
Ideal geometry (proteins) : Engh & Huber (2001)  
Ideal geometry (DNA, RNA) : Parkinson et al. (1996)  
Validation Pipeline (wwPDB-VP) : trunk30967

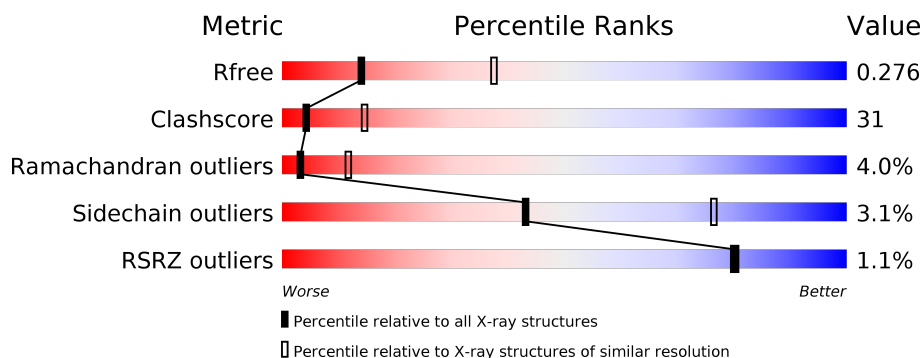
# 1 Overall quality at a glance

The following experimental techniques were used to determine the structure:

*X-RAY DIFFRACTION*

The reported resolution of this entry is 2.91 Å.

Percentile scores (ranging between 0-100) for global validation metrics of the entry are shown in the following graphic. The table shows the number of entries on which the scores are based.



Metric	Whole archive (#Entries)	Similar resolution (#Entries, resolution range(Å))
$R_{free}$	111664	1983 (2.94-2.90)
Clashscore	122126	2200 (2.94-2.90)
Ramachandran outliers	120053	2150 (2.94-2.90)
Sidechain outliers	120020	2152 (2.94-2.90)
RSRZ outliers	108989	1928 (2.94-2.90)

The table below summarises the geometric issues observed across the polymeric chains and their fit to the electron density. The red, orange, yellow and green segments on the lower bar indicate the fraction of residues that contain outliers for  $\geq 3$ , 2, 1 and 0 types of geometric quality criteria. A grey segment represents the fraction of residues that are not modelled. The numeric value for each fraction is indicated below the corresponding segment, with a dot representing fractions  $\leq 5\%$ . The upper red bar (where present) indicates the fraction of residues that have poor fit to the electron density. The numeric value is given above the bar.

Mol	Chain	Length	Quality of chain
1	A	350	<div> <div></div> <div>40%</div> <div>37%</div> <div>21%</div> </div>

The following table lists non-polymeric compounds, carbohydrate monomers and non-standard residues in protein, DNA, RNA chains that are outliers for geometric or electron-density-fit criteria:

Mol	Type	Chain	Res	Chirality	Geometry	Clashes	Electron density
4	NHE	A	354	-	-	-	X

## 2 Entry composition [i](#)

There are 5 unique types of molecules in this entry. The entry contains 2250 atoms, of which 0 are hydrogens and 0 are deuteriums.

In the tables below, the ZeroOcc column contains the number of atoms modelled with zero occupancy, the AltConf column contains the number of residues with at least one atom in alternate conformation and the Trace column contains the number of residues modelled with at most 2 atoms.

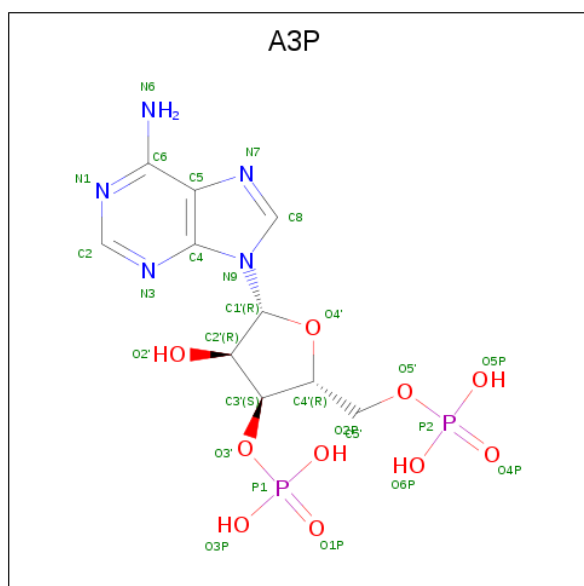
- Molecule 1 is a protein called sulfotransferase family, cytosolic, 2B, member 1 isoform a.

Mol	Chain	Residues	Atoms					ZeroOcc	AltConf	Trace
1	A	278	Total	C	N	O	S	0	0	0
			2189	1416	366	395	12			

- Molecule 2 is SODIUM ION (three-letter code: NA) (formula: Na).

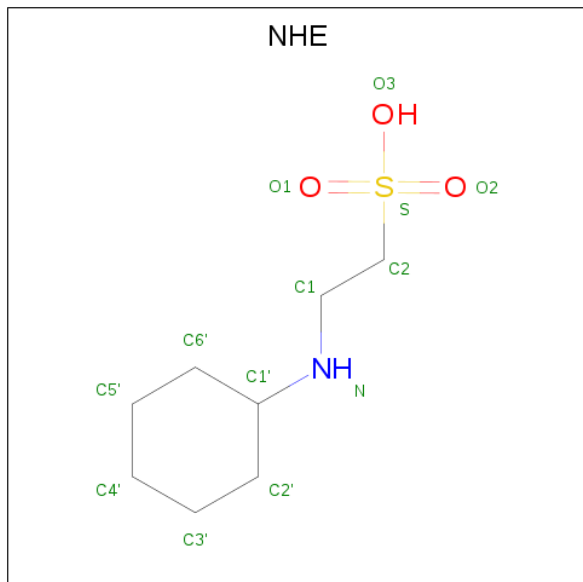
Mol	Chain	Residues	Atoms		ZeroOcc	AltConf
2	A	1	Total	Na	0	0
			1	1		

- Molecule 3 is ADENOSINE-3'-5'-DIPHOSPHATE (three-letter code: A3P) (formula: C<sub>10</sub>H<sub>15</sub>N<sub>5</sub>O<sub>10</sub>P<sub>2</sub>).



Mol	Chain	Residues	Atoms					ZeroOcc	AltConf
3	A	1	Total	C	N	O	P	0	0
			27	10	5	10	2		

- Molecule 4 is 2-[N-CYCLOHEXYLAMINO]ETHANE SULFONIC ACID (three-letter code: NHE) (formula:  $C_8H_{17}NO_3S$ ).



Mol	Chain	Residues	Atoms					ZeroOcc	AltConf
4	A	1	Total	C	N	O	S	0	0
			13	8	1	3	1		
4	A	1	Total	C	N	O	S	0	0
			13	8	1	3	1		

- Molecule 5 is water.

Mol	Chain	Residues	Atoms		ZeroOcc	AltConf
5	A	7	Total	O	0	0
			7	7		



## 4 Data and refinement statistics

Property	Value	Source
Space group	P 41 21 2	Depositor
Cell constants a, b, c, $\alpha$ , $\beta$ , $\gamma$	75.24Å 75.24Å 252.25Å 90.00° 90.00° 90.00°	Depositor
Resolution (Å)	21.94 – 2.91 24.96 – 2.91	Depositor EDS
% Data completeness (in resolution range)	94.3 (21.94-2.91) 96.8 (24.96-2.91)	Depositor EDS
$R_{merge}$	0.08	Depositor
$R_{sym}$	(Not available)	Depositor
$\langle I/\sigma(I) \rangle$ <sup>1</sup>	1.89 (at 2.89Å)	Xtriage
Refinement program	CNS 1.0	Depositor
R, $R_{free}$	0.249 , 0.269 0.257 , 0.276	Depositor DCC
$R_{free}$ test set	1460 reflections (4.89%)	wwPDB-VP
Wilson B-factor (Å <sup>2</sup> )	56.9	Xtriage
Anisotropy	0.204	Xtriage
Bulk solvent $k_{sol}$ (e/Å <sup>3</sup> ), $B_{sol}$ (Å <sup>2</sup> )	0.30 , 36.0	EDS
L-test for twinning <sup>2</sup>	$\langle  L  \rangle = 0.47$ , $\langle L^2 \rangle = 0.30$	Xtriage
Estimated twinning fraction	No twinning to report.	Xtriage
$F_o, F_c$ correlation	0.90	EDS
Total number of atoms	2250	wwPDB-VP
Average B, all atoms (Å <sup>2</sup> )	46.0	wwPDB-VP

Xtriage's analysis on translational NCS is as follows: *The largest off-origin peak in the Patterson function is 4.39% of the height of the origin peak. No significant pseudotranslation is detected.*

<sup>1</sup>Intensities estimated from amplitudes.

<sup>2</sup>Theoretical values of  $\langle |L| \rangle$ ,  $\langle L^2 \rangle$  for acentric reflections are 0.5, 0.333 respectively for untwinned datasets, and 0.375, 0.2 for perfectly twinned datasets.

## 5 Model quality [i](#)

### 5.1 Standard geometry [i](#)

Bond lengths and bond angles in the following residue types are not validated in this section: NHE, NA, A3P

The Z score for a bond length (or angle) is the number of standard deviations the observed value is removed from the expected value. A bond length (or angle) with  $|Z| > 5$  is considered an outlier worth inspection. RMSZ is the root-mean-square of all Z scores of the bond lengths (or angles).

Mol	Chain	Bond lengths		Bond angles	
		RMSZ	$\# Z  > 5$	RMSZ	$\# Z  > 5$
1	A	0.50	0/2254	0.69	1/3062 (0.0%)

There are no bond length outliers.

All (1) bond angle outliers are listed below:

Mol	Chain	Res	Type	Atoms	Z	Observed( $^{\circ}$ )	Ideal( $^{\circ}$ )
1	A	87	PRO	CA-N-CD	-9.15	98.69	111.50

There are no chirality outliers.

There are no planarity outliers.

### 5.2 Too-close contacts [i](#)

In the following table, the Non-H and H(model) columns list the number of non-hydrogen atoms and hydrogen atoms in the chain respectively. The H(added) column lists the number of hydrogen atoms added and optimized by MolProbity. The Clashes column lists the number of clashes within the asymmetric unit, whereas Symm-Clashes lists symmetry related clashes.

Mol	Chain	Non-H	H(model)	H(added)	Clashes	Symm-Clashes
1	A	2189	0	2091	136	0
2	A	1	0	0	0	0
3	A	27	0	11	0	0
4	A	26	0	32	4	0
5	A	7	0	0	0	0
All	All	2250	0	2134	136	0

The all-atom clashscore is defined as the number of clashes found per 1000 atoms (including hydrogen atoms). The all-atom clashscore for this structure is 31.

All (136) close contacts within the same asymmetric unit are listed below, sorted by their clash magnitude.

Atom-1	Atom-2	Interatomic distance (Å)	Clash overlap (Å)
1:A:67:LEU:HD21	1:A:77:ILE:HD13	1.45	0.98
1:A:28:LEU:HD21	1:A:249:LEU:HD11	1.52	0.89
1:A:202:LEU:O	1:A:206:VAL:HG23	1.73	0.86
1:A:25:PRO:HD2	1:A:29:TYR:CD2	2.13	0.84
1:A:279:ASP:HB3	1:A:283:ARG:NH2	1.93	0.84
1:A:247:PRO:HA	1:A:250:LEU:O	1.80	0.81
1:A:33:SER:HB2	1:A:90:GLU:O	1.84	0.78
1:A:77:ILE:HA	1:A:85:ARG:HE	1.49	0.75
1:A:77:ILE:HA	1:A:85:ARG:NE	2.02	0.74
1:A:25:PRO:HD2	1:A:29:TYR:HD2	1.51	0.74
1:A:12:LEU:CD2	1:A:150:GLN:HA	2.20	0.71
1:A:201:ASP:OD2	1:A:204:GLY:HA3	1.91	0.71
1:A:12:LEU:HD21	1:A:150:GLN:HA	1.73	0.71
1:A:183:ARG:HG2	1:A:183:ARG:HH11	1.55	0.70
1:A:60:TRP:O	1:A:64:ILE:HG13	1.93	0.69
1:A:72:GLY:O	1:A:74:PRO:HD3	1.93	0.69
1:A:67:LEU:HB2	1:A:225:VAL:HG13	1.75	0.68
1:A:170:GLN:O	1:A:171:PHE:HB2	1.96	0.65
1:A:81:PRO:O	1:A:85:ARG:HG3	1.98	0.64
1:A:67:LEU:CD1	1:A:225:VAL:HA	2.28	0.63
1:A:80:VAL:CG1	1:A:81:PRO:HD2	2.28	0.63
1:A:15:GLU:O	1:A:26:VAL:HG23	1.99	0.63
1:A:138:VAL:HG22	1:A:164:PHE:CE2	2.34	0.63
1:A:67:LEU:CD2	1:A:77:ILE:HD13	2.24	0.62
1:A:156:THR:HG23	1:A:159:GLN:CB	2.30	0.62
1:A:279:ASP:HB3	1:A:283:ARG:HH22	1.66	0.61
1:A:241:ASN:HD22	1:A:243:THR:H	1.48	0.60
1:A:198:LEU:HD23	1:A:205:SER:CB	2.31	0.60
1:A:272:VAL:O	1:A:276:GLU:HG3	2.01	0.60
1:A:161:LEU:HB2	4:A:353:NHE:H3'2	1.84	0.59
1:A:55:LYS:HD2	1:A:55:LYS:N	2.16	0.59
1:A:183:ARG:HG2	1:A:183:ARG:NH1	2.18	0.59
1:A:67:LEU:HD13	1:A:225:VAL:HA	1.85	0.59
1:A:65:ILE:HD11	1:A:128:ILE:HD12	1.84	0.58
1:A:80:VAL:HG12	1:A:81:PRO:HD2	1.85	0.58
1:A:49:PHE:HB2	1:A:127:VAL:HG22	1.85	0.58
1:A:139:VAL:HG21	1:A:266:TRP:HA	1.87	0.57
1:A:150:GLN:NE2	4:A:354:NHE:O3	2.38	0.56
1:A:187:LYS:HE3	1:A:189:ASN:OD1	2.05	0.56
1:A:217:LEU:HB3	1:A:221:ALA:HB3	1.88	0.56

*Continued on next page...*



*Continued from previous page...*

Atom-1	Atom-2	Interatomic distance (Å)	Clash overlap (Å)
1:A:156:THR:HG23	1:A:159:GLN:HB2	1.88	0.56
1:A:157:PRO:HB3	4:A:353:NHE:H2'2	1.88	0.56
1:A:51:ILE:HD13	1:A:181:TRP:CZ2	2.41	0.55
1:A:205:SER:O	1:A:209:ILE:HG13	2.05	0.55
1:A:82:ILE:HG13	1:A:85:ARG:NH1	2.22	0.55
1:A:118:LYS:O	1:A:120:PHE:N	2.41	0.54
1:A:130:MET:HA	1:A:193:ILE:O	2.07	0.54
1:A:216:PRO:O	1:A:217:LEU:HD23	2.07	0.53
1:A:95:ALA:HB3	1:A:107:MET:CE	2.39	0.53
1:A:133:ASN:HD22	1:A:294:TRP:HB2	1.74	0.53
1:A:67:LEU:HB3	1:A:225:VAL:HG22	1.90	0.53
1:A:241:ASN:ND2	1:A:243:THR:OG1	2.43	0.52
1:A:73:ASP:OD1	1:A:75:SER:HB2	2.08	0.52
1:A:198:LEU:HD23	1:A:205:SER:HB3	1.92	0.51
1:A:134:PRO:O	1:A:138:VAL:HG23	2.10	0.51
1:A:12:LEU:HD22	1:A:149:GLY:O	2.11	0.51
1:A:156:THR:HG23	1:A:159:GLN:HB3	1.91	0.51
1:A:28:LEU:O	1:A:92:ILE:HG12	2.11	0.51
1:A:65:ILE:HG21	1:A:106:LEU:CD1	2.41	0.51
1:A:126:LYS:HD2	1:A:213:LEU:HD23	1.93	0.51
1:A:86:ALA:HA	1:A:106:LEU:O	2.11	0.50
1:A:175:PHE:HE2	1:A:282:TYR:HD2	1.59	0.50
1:A:241:ASN:HD22	1:A:241:ASN:C	2.15	0.49
1:A:52:THR:O	1:A:110:HIS:HA	2.13	0.49
1:A:48:ILE:HD13	1:A:213:LEU:HD22	1.94	0.49
1:A:52:THR:HG22	1:A:130:MET:HB3	1.94	0.48
1:A:118:LYS:C	1:A:120:PHE:N	2.65	0.48
1:A:62:ILE:HD13	1:A:86:ALA:HB3	1.94	0.48
1:A:78:ARG:O	1:A:239:MET:HG3	2.13	0.48
1:A:86:ALA:N	1:A:87:PRO:CD	2.77	0.48
1:A:16:TYR:HA	1:A:24:PHE:O	2.14	0.48
1:A:282:TYR:CE2	1:A:286:MET:HG3	2.49	0.48
1:A:59:THR:HG23	1:A:82:ILE:HD13	1.95	0.48
1:A:203:GLN:HG3	1:A:226:VAL:HG21	1.96	0.47
1:A:203:GLN:O	1:A:207:GLU:HG3	2.14	0.47
1:A:139:VAL:HG13	1:A:269:HIS:CD2	2.49	0.47
1:A:67:LEU:HD12	1:A:225:VAL:HA	1.95	0.47
1:A:218:GLY:O	1:A:219:LYS:C	2.52	0.47
1:A:80:VAL:HG12	1:A:81:PRO:CD	2.44	0.47
1:A:247:PRO:C	1:A:249:LEU:H	2.18	0.47
1:A:118:LYS:C	1:A:120:PHE:H	2.18	0.46

*Continued on next page...*

*Continued from previous page...*

Atom-1	Atom-2	Interatomic distance (Å)	Clash overlap (Å)
1:A:82:ILE:HG13	1:A:85:ARG:HH12	1.79	0.46
1:A:95:ALA:HB3	1:A:107:MET:HE2	1.97	0.46
1:A:52:THR:CG2	1:A:130:MET:HB3	2.45	0.46
1:A:147:ILE:O	1:A:250:LEU:HA	2.17	0.45
1:A:231:PHE:CE1	1:A:258:LEU:HB3	2.52	0.45
1:A:22:VAL:HA	1:A:23:PRO:HD3	1.75	0.45
1:A:88:TRP:HA	1:A:108:SER:O	2.17	0.45
1:A:138:VAL:HG22	1:A:164:PHE:CZ	2.52	0.44
1:A:165:LEU:HD21	1:A:278:PHE:CD2	2.52	0.44
1:A:110:HIS:HB2	1:A:171:PHE:CZ	2.52	0.44
1:A:213:LEU:HB3	1:A:215:ARG:HD2	2.00	0.44
1:A:57:GLY:HA3	1:A:130:MET:HE1	1.99	0.44
1:A:126:LYS:CD	1:A:213:LEU:HD23	2.48	0.44
1:A:68:ILE:HD13	1:A:210:CYS:SG	2.57	0.44
1:A:207:GLU:O	1:A:210:CYS:HB2	2.18	0.43
1:A:17:PHE:C	1:A:17:PHE:CD1	2.92	0.43
1:A:15:GLU:C	1:A:26:VAL:HG23	2.39	0.43
1:A:243:THR:HA	1:A:252:HIS:CE1	2.53	0.43
1:A:88:TRP:CE3	4:A:354:NHE:H2'1	2.53	0.43
1:A:233:ALA:O	1:A:236:ALA:HB3	2.19	0.43
1:A:175:PHE:HE2	1:A:282:TYR:CD2	2.36	0.43
1:A:51:ILE:HD11	1:A:116:PHE:CZ	2.54	0.43
1:A:38:GLU:HG2	1:A:118:LYS:HE3	2.00	0.43
1:A:66:CYS:SG	1:A:85:ARG:HB3	2.59	0.43
1:A:198:LEU:CD2	1:A:205:SER:HB3	2.49	0.43
1:A:20:LYS:HE2	1:A:38:GLU:OE1	2.19	0.43
1:A:51:ILE:HG22	1:A:129:TYR:CD1	2.54	0.43
1:A:51:ILE:O	1:A:129:TYR:HA	2.19	0.42
1:A:81:PRO:HG2	1:A:84:GLU:HB2	2.00	0.42
1:A:142:TYR:CE2	1:A:154:PRO:HB3	2.55	0.42
1:A:147:ILE:HG13	1:A:250:LEU:HD12	2.01	0.42
1:A:48:ILE:CD1	1:A:213:LEU:HD22	2.50	0.42
1:A:74:PRO:O	1:A:75:SER:C	2.57	0.42
1:A:135:ARG:HG3	1:A:135:ARG:HH11	1.85	0.42
1:A:12:LEU:HD22	1:A:150:GLN:HA	1.98	0.42
1:A:63:GLU:O	1:A:64:ILE:C	2.58	0.42
1:A:241:ASN:ND2	1:A:243:THR:H	2.16	0.41
1:A:65:ILE:HG22	1:A:106:LEU:HD22	2.02	0.41
1:A:126:LYS:HD3	1:A:212:PHE:CE2	2.55	0.41
1:A:95:ALA:HB3	1:A:107:MET:HE3	2.03	0.41
1:A:231:PHE:HE1	1:A:258:LEU:HB3	1.85	0.41

*Continued on next page...*

*Continued from previous page...*

Atom-1	Atom-2	Interatomic distance (Å)	Clash overlap (Å)
1:A:24:PHE:HA	1:A:25:PRO:HD3	1.88	0.41
1:A:80:VAL:HG13	1:A:81:PRO:HD2	2.00	0.41
1:A:64:ILE:O	1:A:68:ILE:HG13	2.21	0.41
1:A:18:ARG:HA	1:A:22:VAL:O	2.20	0.41
1:A:30:SER:O	1:A:31:LEU:C	2.57	0.41
1:A:38:GLU:CG	1:A:118:LYS:HE3	2.50	0.41
1:A:116:PHE:CD2	1:A:181:TRP:CH2	3.08	0.41
1:A:55:LYS:HG3	1:A:141:LEU:HB2	2.03	0.41
1:A:61:MET:SD	1:A:209:ILE:HD13	2.61	0.41
1:A:235:LYS:HA	1:A:258:LEU:HD12	2.03	0.41
1:A:15:GLU:HB2	1:A:26:VAL:HG21	2.02	0.41
1:A:65:ILE:HG21	1:A:106:LEU:HD13	2.03	0.41
1:A:133:ASN:O	1:A:134:PRO:C	2.59	0.40
1:A:242:TYR:HD1	1:A:245:LEU:HD11	1.86	0.40

There are no symmetry-related clashes.

## 5.3 Torsion angles [i](#)

### 5.3.1 Protein backbone [i](#)

In the following table, the Percentiles column shows the percent Ramachandran outliers of the chain as a percentile score with respect to all X-ray entries followed by that with respect to entries of similar resolution.

The Analysed column shows the number of residues for which the backbone conformation was analysed, and the total number of residues.

Mol	Chain	Analysed	Favoured	Allowed	Outliers	Percentiles
1	A	274/350 (78%)	223 (81%)	40 (15%)	11 (4%)	<b>3</b> <b>12</b>

All (11) Ramachandran outliers are listed below:

Mol	Chain	Res	Type
1	A	287	ARG
1	A	71	GLU
1	A	119	ALA
1	A	259	ARG
1	A	121	PHE
1	A	54	PRO
1	A	116	PHE

*Continued on next page...*

*Continued from previous page...*

Mol	Chain	Res	Type
1	A	154	PRO
1	A	157	PRO
1	A	113	ILE
1	A	81	PRO

### 5.3.2 Protein sidechains ⓘ

In the following table, the Percentiles column shows the percent sidechain outliers of the chain as a percentile score with respect to all X-ray entries followed by that with respect to entries of similar resolution.

The Analysed column shows the number of residues for which the sidechain conformation was analysed, and the total number of residues.

Mol	Chain	Analysed	Rotameric	Outliers	Percentiles
1	A	229/310 (74%)	222 (97%)	7 (3%)	43 76

All (7) residues with a non-rotameric sidechain are listed below:

Mol	Chain	Res	Type
1	A	63	GLU
1	A	87	PRO
1	A	113	ILE
1	A	156	THR
1	A	170	GLN
1	A	241	ASN
1	A	263	CYS

Some sidechains can be flipped to improve hydrogen bonding and reduce clashes. All (3) such sidechains are listed below:

Mol	Chain	Res	Type
1	A	170	GLN
1	A	237	ASN
1	A	241	ASN

### 5.3.3 RNA ⓘ

There are no RNA molecules in this entry.

## 5.4 Non-standard residues in protein, DNA, RNA chains [i](#)

There are no non-standard protein/DNA/RNA residues in this entry.

## 5.5 Carbohydrates [i](#)

There are no carbohydrates in this entry.

## 5.6 Ligand geometry [i](#)

Of 4 ligands modelled in this entry, 1 is monoatomic - leaving 3 for Mogul analysis.

In the following table, the Counts columns list the number of bonds (or angles) for which Mogul statistics could be retrieved, the number of bonds (or angles) that are observed in the model and the number of bonds (or angles) that are defined in the Chemical Component Dictionary. The Link column lists molecule types, if any, to which the group is linked. The Z score for a bond length (or angle) is the number of standard deviations the observed value is removed from the expected value. A bond length (or angle) with  $|Z| > 2$  is considered an outlier worth inspection. RMSZ is the root-mean-square of all Z scores of the bond lengths (or angles).

Mol	Type	Chain	Res	Link	Bond lengths			Bond angles		
					Counts	RMSZ	$\# Z  > 2$	Counts	RMSZ	$\# Z  > 2$
3	A3P	A	352	-	26,29,29	1.05	1 (3%)	30,45,45	0.91	1 (3%)
4	NHE	A	353	-	13,13,13	4.14	8 (61%)	16,17,17	3.42	8 (50%)
4	NHE	A	354	-	13,13,13	3.68	6 (46%)	16,17,17	3.62	10 (62%)

In the following table, the Chirals column lists the number of chiral outliers, the number of chiral centers analysed, the number of these observed in the model and the number defined in the Chemical Component Dictionary. Similar counts are reported in the Torsion and Rings columns. '-' means no outliers of that kind were identified.

Mol	Type	Chain	Res	Link	Chirals	Torsions	Rings
3	A3P	A	352	-	-	0/11/31/31	0/3/3/3
4	NHE	A	353	-	-	0/7/15/15	0/1/1/1
4	NHE	A	354	-	-	0/7/15/15	0/1/1/1

All (15) bond length outliers are listed below:

Mol	Chain	Res	Type	Atoms	Z	Observed(Å)	Ideal(Å)
4	A	353	NHE	C5'-C6'	-3.86	1.43	1.53
4	A	353	NHE	C2'-C1'	-3.42	1.43	1.51
4	A	353	NHE	C3'-C2'	-3.26	1.44	1.53
4	A	353	NHE	C6'-C1'	-2.26	1.46	1.51

*Continued on next page...*

*Continued from previous page...*

Mol	Chain	Res	Type	Atoms	Z	Observed(Å)	Ideal(Å)
4	A	354	NHE	C3'-C2'	-2.15	1.47	1.53
4	A	354	NHE	C5'-C6'	-2.09	1.47	1.53
4	A	353	NHE	C4'-C5'	-2.00	1.43	1.51
3	A	352	A3P	C2-N3	2.83	1.36	1.32
4	A	354	NHE	C2-S	4.35	1.83	1.77
4	A	354	NHE	O3-S	5.83	1.68	1.47
4	A	353	NHE	O3-S	6.20	1.69	1.47
4	A	354	NHE	O2-S	7.37	1.66	1.45
4	A	354	NHE	O1-S	7.53	1.67	1.45
4	A	353	NHE	O1-S	8.03	1.68	1.45
4	A	353	NHE	O2-S	8.11	1.69	1.45

All (19) bond angle outliers are listed below:

Mol	Chain	Res	Type	Atoms	Z	Observed(°)	Ideal(°)
4	A	354	NHE	C2'-C1'-N	2.13	120.01	110.58
3	A	352	A3P	O2'-C2'-C3'	2.37	117.88	111.17
4	A	354	NHE	C6'-C1'-N	2.52	121.73	110.58
4	A	354	NHE	O3-S-C2	2.59	109.95	105.77
4	A	353	NHE	C6'-C1'-N	2.64	122.28	110.58
4	A	353	NHE	C5'-C4'-C3'	2.91	120.41	111.19
4	A	354	NHE	C5'-C4'-C3'	2.92	120.45	111.19
4	A	353	NHE	C4'-C3'-C2'	3.85	119.25	111.42
4	A	353	NHE	O1-S-C2	4.06	111.80	106.92
4	A	354	NHE	C4'-C5'-C6'	4.27	120.09	111.42
4	A	354	NHE	C4'-C3'-C2'	4.41	120.37	111.42
4	A	353	NHE	C4'-C5'-C6'	4.59	120.74	111.42
4	A	354	NHE	C6'-C1'-C2'	4.72	118.25	110.86
4	A	354	NHE	O1-S-C2	5.58	113.63	106.92
4	A	353	NHE	C6'-C1'-C2'	5.58	119.60	110.86
4	A	353	NHE	C5'-C6'-C1'	5.74	119.37	111.09
4	A	354	NHE	C3'-C2'-C1'	6.47	120.42	111.09
4	A	354	NHE	C5'-C6'-C1'	6.47	120.42	111.09
4	A	353	NHE	C3'-C2'-C1'	6.61	120.63	111.09

There are no chirality outliers.

There are no torsion outliers.

There are no ring outliers.

2 monomers are involved in 4 short contacts:

Mol	Chain	Res	Type	Clashes	Symm-Clashes
4	A	353	NHE	2	0
4	A	354	NHE	2	0

## 5.7 Other polymers [i](#)

There are no such residues in this entry.

## 5.8 Polymer linkage issues [i](#)

There are no chain breaks in this entry.

## 6 Fit of model and data [i](#)

### 6.1 Protein, DNA and RNA chains [i](#)

In the following table, the column labelled ‘#RSRZ > 2’ contains the number (and percentage) of RSRZ outliers, followed by percent RSRZ outliers for the chain as percentile scores relative to all X-ray entries and entries of similar resolution. The OWAB column contains the minimum, median, 95<sup>th</sup> percentile and maximum values of the occupancy-weighted average B-factor per residue. The column labelled ‘Q < 0.9’ lists the number of (and percentage) of residues with an average occupancy less than 0.9.

Mol	Chain	Analysed	<RSRZ>	#RSRZ>2	OWAB(Å <sup>2</sup> )	Q<0.9
1	A	278/350 (79%)	-0.15	3 (1%) 80 80	27, 46, 61, 69	0

All (3) RSRZ outliers are listed below:

Mol	Chain	Res	Type	RSRZ
1	A	248	SER	2.8
1	A	52	THR	2.5
1	A	12	LEU	2.3

### 6.2 Non-standard residues in protein, DNA, RNA chains [i](#)

There are no non-standard protein/DNA/RNA residues in this entry.

### 6.3 Carbohydrates [i](#)

There are no carbohydrates in this entry.

### 6.4 Ligands [i](#)

In the following table, the Atoms column lists the number of modelled atoms in the group and the number defined in the chemical component dictionary. The B-factors column lists the minimum, median, 95<sup>th</sup> percentile and maximum values of B factors of atoms in the group. The column labelled ‘Q < 0.9’ lists the number of atoms with occupancy less than 0.9.

Mol	Type	Chain	Res	Atoms	RSCC	RSR	B-factors(Å <sup>2</sup> )	Q<0.9
4	NHE	A	354	13/13	0.71	0.52	75,83,90,91	0
4	NHE	A	353	13/13	0.87	0.27	74,75,78,79	0
2	NA	A	351	1/1	0.89	0.22	30,30,30,30	0
3	A3P	A	352	27/27	0.94	0.19	32,35,38,40	0



## 6.5 Other polymers [i](#)

There are no such residues in this entry.