



# Full wwPDB X-ray Structure Validation Report ⓘ

Mar 8, 2018 – 09:12 pm GMT

PDB ID : 3Q1K  
Title : The Crystal Structure of the D-alanyl-alanine Synthetase A from Salmonella enterica Typhimurium Complexed with ADP  
Authors : Zhang, R.; Maltseva, N.; Papazisi, L.; Anderson, W.; Joachimiak, A.; Center for Structural Genomics of Infectious Diseases (CSGID)  
Deposited on : 2010-12-17  
Resolution : 2.20 Å(reported)

This is a Full wwPDB X-ray Structure Validation Report for a publicly released PDB entry.

We welcome your comments at [validation@mail.wwpdb.org](mailto:validation@mail.wwpdb.org)

A user guide is available at

<https://www.wwpdb.org/validation/2017/XrayValidationReportHelp>

with specific help available everywhere you see the ⓘ symbol.

---

The following versions of software and data (see [references ⓘ](#)) were used in the production of this report:

MolProbity	:	4.02b-467
Mogul	:	1.7.3 (157068), CSD as539be (2018)
Xtriage (Phenix)	:	1.13
EDS	:	trunk30967
Percentile statistics	:	20171227.v01 (using entries in the PDB archive December 27th 2017)
Refmac	:	5.8.0158
CCP4	:	7.0 (Gargrove)
Ideal geometry (proteins)	:	Engh & Huber (2001)
Ideal geometry (DNA, RNA)	:	Parkinson et al. (1996)
Validation Pipeline (wwPDB-VP)	:	trunk30967

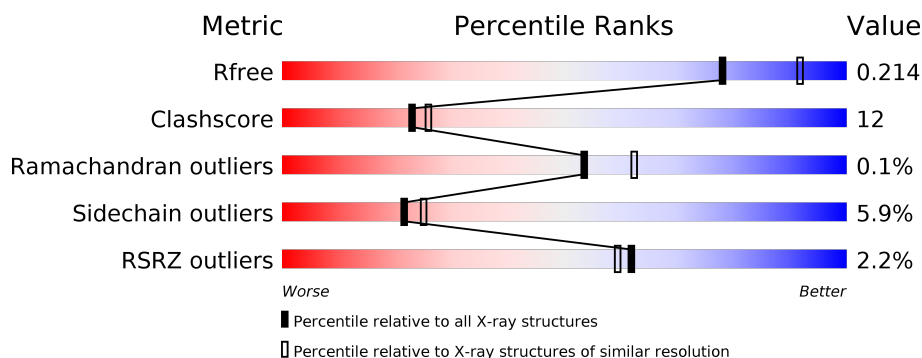
# 1 Overall quality at a glance

The following experimental techniques were used to determine the structure:

*X-RAY DIFFRACTION*

The reported resolution of this entry is 2.20 Å.

Percentile scores (ranging between 0-100) for global validation metrics of the entry are shown in the following graphic. The table shows the number of entries on which the scores are based.



Metric	Whole archive (#Entries)	Similar resolution (#Entries, resolution range(Å))
$R_{free}$	111664	4343 (2.20-2.20)
Clashscore	122126	5027 (2.20-2.20)
Ramachandran outliers	120053	4952 (2.20-2.20)
Sidechain outliers	120020	4953 (2.20-2.20)
RSRZ outliers	108989	4245 (2.20-2.20)

The table below summarises the geometric issues observed across the polymeric chains and their fit to the electron density. The red, orange, yellow and green segments on the lower bar indicate the fraction of residues that contain outliers for  $\geq 3$ , 2, 1 and 0 types of geometric quality criteria. A grey segment represents the fraction of residues that are not modelled. The numeric value for each fraction is indicated below the corresponding segment, with a dot representing fractions  $\leq 5\%$ . The upper red bar (where present) indicates the fraction of residues that have poor fit to the electron density. The numeric value is given above the bar.

Mol	Chain	Length	Quality of chain
1	A	367	<div> <div>2%</div> <div> <div></div> <div>78%</div> <div>17%</div> <div>• •</div> </div> </div>
1	B	367	<div> <div>%</div> <div> <div></div> <div>78%</div> <div>14%</div> <div>• 6%</div> </div> </div>
1	C	367	<div> <div>3%</div> <div> <div></div> <div>68%</div> <div>23%</div> <div>• 6%</div> </div> </div>
1	D	367	<div> <div>2%</div> <div> <div></div> <div>75%</div> <div>19%</div> <div>• •</div> </div> </div>

The following table lists non-polymeric compounds, carbohydrate monomers and non-standard residues in protein, DNA, RNA chains that are outliers for geometric or electron-density-fit crite-

ria:

Mol	Type	Chain	Res	Chirality	Geometry	Clashes	Electron density
5	GOL	C	372	-	-	X	-

## 2 Entry composition

There are 7 unique types of molecules in this entry. The entry contains 11376 atoms, of which 0 are hydrogens and 0 are deuteriums.

In the tables below, the ZeroOcc column contains the number of atoms modelled with zero occupancy, the AltConf column contains the number of residues with at least one atom in alternate conformation and the Trace column contains the number of residues modelled with at most 2 atoms.

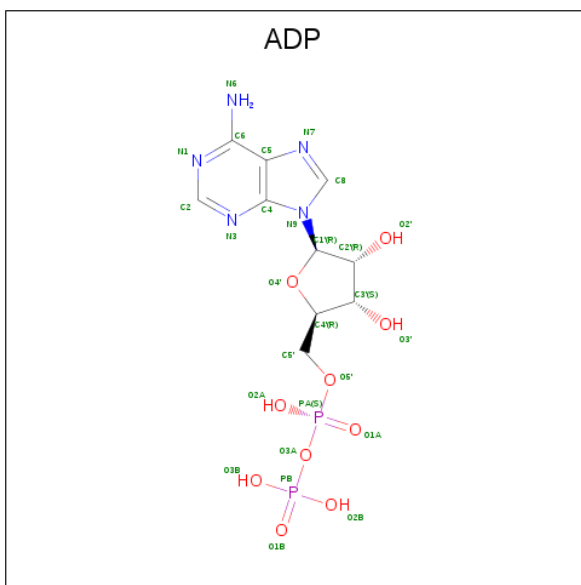
- Molecule 1 is a protein called D-alanine–D-alanine ligase A.

Mol	Chain	Residues	Atoms						ZeroOcc	AltConf	Trace
1	A	357	Total	C	N	O	S	Se	0	3	0
			2737	1726	480	522	4	5			
1	B	346	Total	C	N	O	S	Se	0	1	0
			2626	1655	464	498	4	5			
1	C	345	Total	C	N	O	S	Se	0	4	0
			2646	1669	468	499	4	6			
1	D	355	Total	C	N	O	S	Se	0	4	0
			2731	1718	481	524	4	4			

There are 12 discrepancies between the modelled and reference sequences:

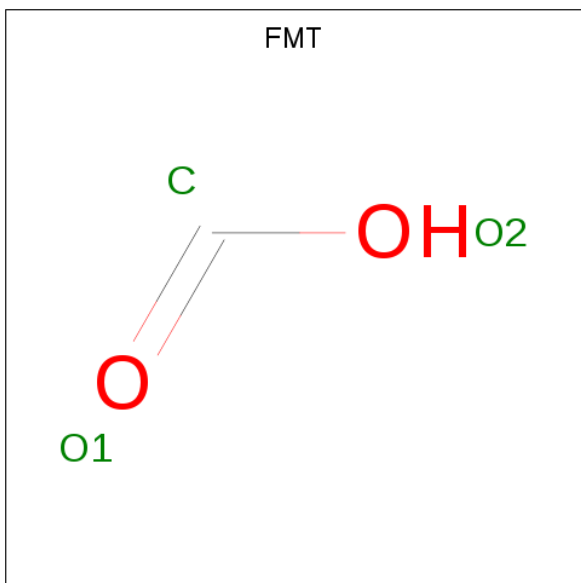
Chain	Residue	Modelled	Actual	Comment	Reference
A	-2	SER	-	EXPRESSION TAG	UNP P0A1F0
A	-1	ASN	-	EXPRESSION TAG	UNP P0A1F0
A	0	ALA	-	EXPRESSION TAG	UNP P0A1F0
B	-2	SER	-	EXPRESSION TAG	UNP P0A1F0
B	-1	ASN	-	EXPRESSION TAG	UNP P0A1F0
B	0	ALA	-	EXPRESSION TAG	UNP P0A1F0
C	-2	SER	-	EXPRESSION TAG	UNP P0A1F0
C	-1	ASN	-	EXPRESSION TAG	UNP P0A1F0
C	0	ALA	-	EXPRESSION TAG	UNP P0A1F0
D	-2	SER	-	EXPRESSION TAG	UNP P0A1F0
D	-1	ASN	-	EXPRESSION TAG	UNP P0A1F0
D	0	ALA	-	EXPRESSION TAG	UNP P0A1F0

- Molecule 2 is ADENOSINE-5'-DIPHOSPHATE (three-letter code: ADP) (formula:  $C_{10}H_{15}N_5O_{10}P_2$ ).



Mol	Chain	Residues	Atoms					ZeroOcc	AltConf
2	A	1	Total	C	N	O	P	0	0
			27	10	5	10	2		
2	B	1	Total	C	N	O	P	0	0
			27	10	5	10	2		
2	C	1	Total	C	N	O	P	0	0
			27	10	5	10	2		
2	D	1	Total	C	N	O	P	0	0
			27	10	5	10	2		

- Molecule 3 is FORMIC ACID (three-letter code: FMT) (formula:  $\text{CH}_2\text{O}_2$ ).

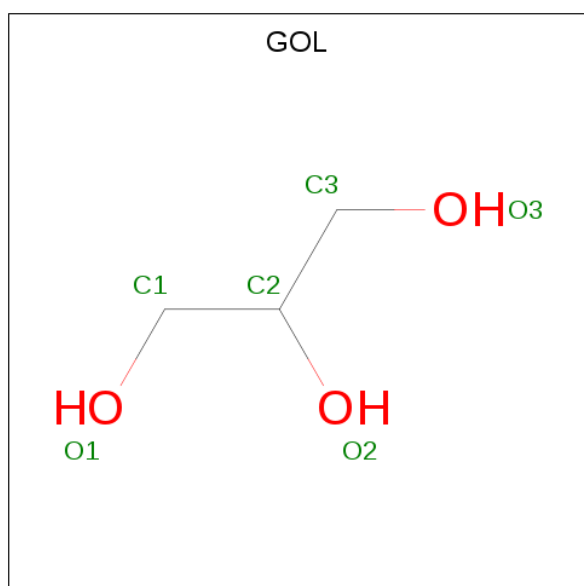


Mol	Chain	Residues	Atoms			ZeroOcc	AltConf
3	A	1	Total	C	O	0	0
			3	1	2		
3	B	1	Total	C	O	0	0
			3	1	2		
3	B	1	Total	C	O	0	0
			3	1	2		
3	B	1	Total	C	O	0	0
			3	1	2		
3	D	1	Total	C	O	0	0
			3	1	2		

- Molecule 4 is MAGNESIUM ION (three-letter code: MG) (formula: Mg).

Mol	Chain	Residues	Atoms		ZeroOcc	AltConf
4	B	1	Total	Mg	0	0
			1	1		
4	A	1	Total	Mg	0	0
			1	1		
4	D	1	Total	Mg	0	0
			1	1		

- Molecule 5 is GLYCEROL (three-letter code: GOL) (formula: C<sub>3</sub>H<sub>8</sub>O<sub>3</sub>).



Mol	Chain	Residues	Atoms			ZeroOcc	AltConf
5	A	1	Total	C	O	0	0
			6	3	3		
5	B	1	Total	C	O	0	0
			6	3	3		

*Continued on next page...*

Continued from previous page...

Mol	Chain	Residues	Atoms			ZeroOcc	AltConf
5	C	1	Total	C	O	0	0
			6	3	3		
5	C	1	Total	C	O	0	0
			6	3	3		

- Molecule 6 is SULFATE ION (three-letter code: SO4) (formula: O<sub>4</sub>S).



Mol	Chain	Residues	Atoms			ZeroOcc	AltConf
6	B	1	Total	O	S	0	0
			5	4	1		

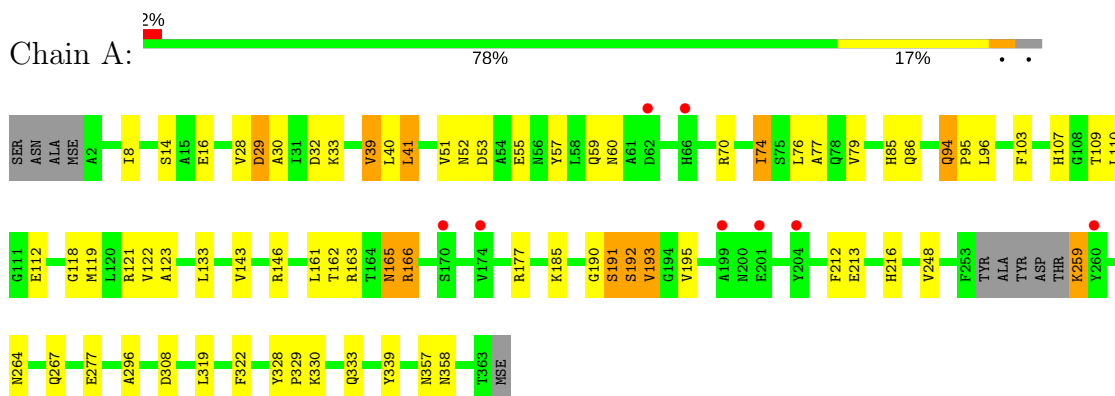
- Molecule 7 is water.

Mol	Chain	Residues	Atoms		ZeroOcc	AltConf
7	A	144	Total	O	0	0
			144	144		
7	B	113	Total	O	0	0
			113	113		
7	C	109	Total	O	0	0
			109	109		
7	D	115	Total	O	0	0
			115	115		

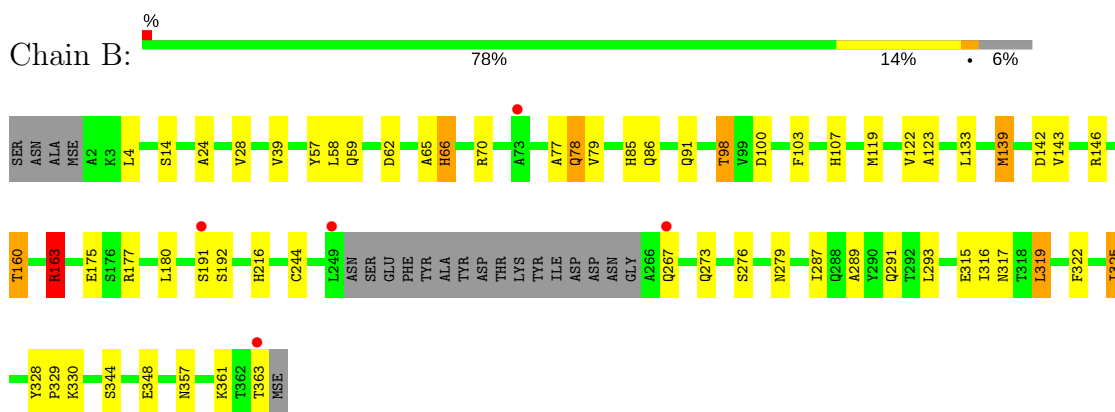
### 3 Residue-property plots [i](#)

These plots are drawn for all protein, RNA and DNA chains in the entry. The first graphic for a chain summarises the proportions of the various outlier classes displayed in the second graphic. The second graphic shows the sequence view annotated by issues in geometry and electron density. Residues are color-coded according to the number of geometric quality criteria for which they contain at least one outlier: green = 0, yellow = 1, orange = 2 and red = 3 or more. A red dot above a residue indicates a poor fit to the electron density ( $RSRZ > 2$ ). Stretches of 2 or more consecutive residues without any outlier are shown as a green connector. Residues present in the sample, but not in the model, are shown in grey.

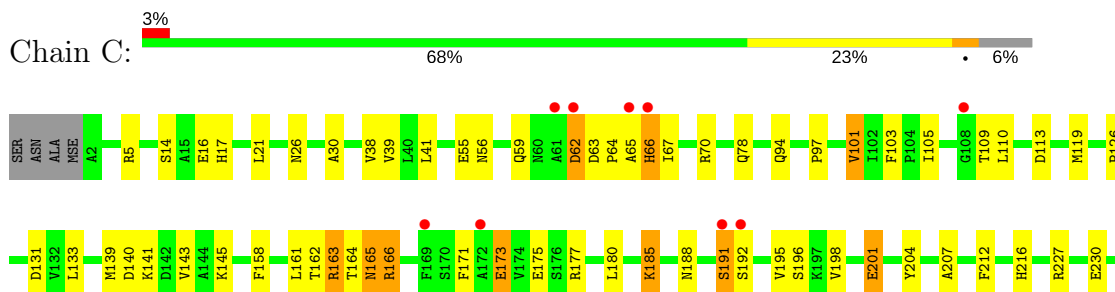
#### • Molecule 1: D-alanine–D-alanine ligase A



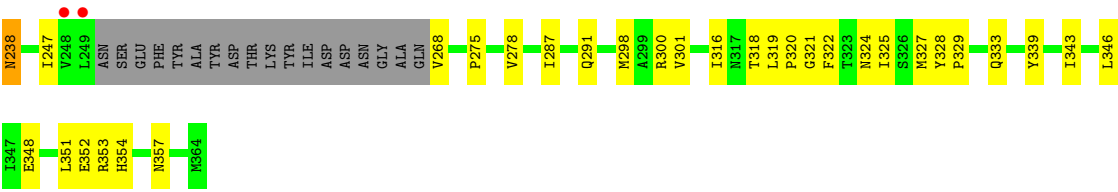
#### • Molecule 1: D-alanine–D-alanine ligase A



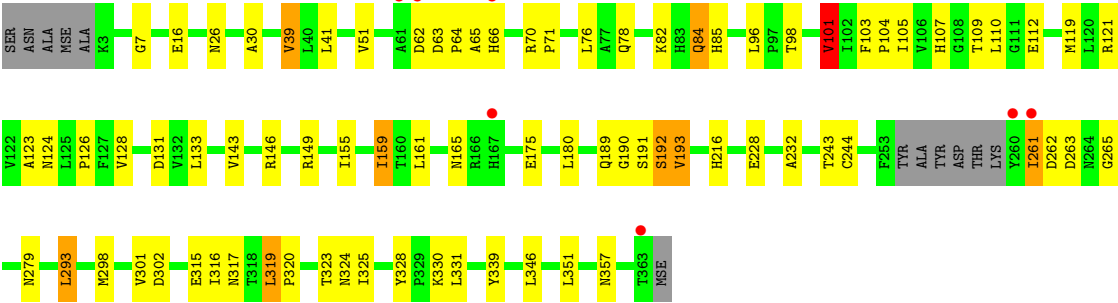
#### • Molecule 1: D-alanine–D-alanine ligase A







● Molecule 1: D-alanine–D-alanine ligase A



## 4 Data and refinement statistics

Property	Value	Source
Space group	P 21 21 21	Depositor
Cell constants a, b, c, $\alpha$ , $\beta$ , $\gamma$	85.15Å 85.81Å 230.89Å 90.00° 90.00° 90.00°	Depositor
Resolution (Å)	47.54 – 2.20 47.54 – 2.20	Depositor EDS
% Data completeness (in resolution range)	99.9 (47.54-2.20) 99.9 (47.54-2.20)	Depositor EDS
$R_{merge}$	(Not available)	Depositor
$R_{sym}$	0.09	Depositor
$\langle I/\sigma(I) \rangle$ <sup>1</sup>	2.58 (at 2.20Å)	Xtriage
Refinement program	PHENIX (phenix.refine: 1.6.4_486)	Depositor
R, $R_{free}$	0.176 , 0.221 0.169 , 0.214	Depositor DCC
$R_{free}$ test set	4332 reflections (5.01%)	wwPDB-VP
Wilson B-factor (Å <sup>2</sup> )	39.5	Xtriage
Anisotropy	0.194	Xtriage
Bulk solvent $k_{sol}$ (e/Å <sup>3</sup> ), $B_{sol}$ (Å <sup>2</sup> )	0.32 , 50.5	EDS
L-test for twinning <sup>2</sup>	$\langle  L  \rangle = 0.49$ , $\langle L^2 \rangle = 0.32$	Xtriage
Estimated twinning fraction	0.019 for k,h,-l	Xtriage
$F_o, F_c$ correlation	0.96	EDS
Total number of atoms	11376	wwPDB-VP
Average B, all atoms (Å <sup>2</sup> )	47.0	wwPDB-VP

Xtriage's analysis on translational NCS is as follows: *The largest off-origin peak in the Patterson function is 3.13% of the height of the origin peak. No significant pseudotranslation is detected.*

<sup>1</sup>Intensities estimated from amplitudes.

<sup>2</sup>Theoretical values of  $\langle |L| \rangle$ ,  $\langle L^2 \rangle$  for acentric reflections are 0.5, 0.333 respectively for untwinned datasets, and 0.375, 0.2 for perfectly twinned datasets.

## 5 Model quality [i](#)

### 5.1 Standard geometry [i](#)

Bond lengths and bond angles in the following residue types are not validated in this section: GOL, MG, FMT, ADP, SO4

The Z score for a bond length (or angle) is the number of standard deviations the observed value is removed from the expected value. A bond length (or angle) with  $|Z| > 5$  is considered an outlier worth inspection. RMSZ is the root-mean-square of all Z scores of the bond lengths (or angles).

Mol	Chain	Bond lengths		Bond angles	
		RMSZ	# Z  >5	RMSZ	# Z  >5
1	A	0.48	0/2779	0.60	0/3769
1	B	0.48	0/2665	0.62	1/3615 (0.0%)
1	C	0.43	0/2684	0.59	0/3639
1	D	0.48	0/2773	0.60	1/3763 (0.0%)
All	All	0.47	0/10901	0.60	2/14786 (0.0%)

There are no bond length outliers.

All (2) bond angle outliers are listed below:

Mol	Chain	Res	Type	Atoms	Z	Observed(°)	Ideal(°)
1	D	101	VAL	CB-CA-C	-5.29	101.34	111.40
1	B	163	ARG	NE-CZ-NH2	5.29	122.94	120.30

There are no chirality outliers.

There are no planarity outliers.

### 5.2 Too-close contacts [i](#)

In the following table, the Non-H and H(model) columns list the number of non-hydrogen atoms and hydrogen atoms in the chain respectively. The H(added) column lists the number of hydrogen atoms added and optimized by MolProbity. The Clashes column lists the number of clashes within the asymmetric unit, whereas Symm-Clashes lists symmetry related clashes.

Mol	Chain	Non-H	H(model)	H(added)	Clashes	Symm-Clashes
1	A	2737	0	2740	79	0
1	B	2626	0	2646	44	0
1	C	2646	0	2673	86	0
1	D	2731	0	2719	77	0
2	A	27	0	12	2	0

*Continued on next page...*

*Continued from previous page...*

Mol	Chain	Non-H	H(model)	H(added)	Clashes	Symm-Clashes
2	B	27	0	12	1	0
2	C	27	0	12	2	0
2	D	27	0	12	2	0
3	A	3	0	1	0	0
3	B	9	0	3	0	0
3	D	3	0	1	0	0
4	A	1	0	0	0	0
4	B	1	0	0	0	0
4	D	1	0	0	0	0
5	A	6	0	8	1	0
5	B	6	0	8	0	0
5	C	12	0	16	8	0
6	B	5	0	0	0	0
7	A	144	0	0	6	0
7	B	113	0	0	6	0
7	C	109	0	0	1	0
7	D	115	0	0	8	0
All	All	11376	0	10863	267	0

The all-atom clashscore is defined as the number of clashes found per 1000 atoms (including hydrogen atoms). The all-atom clashscore for this structure is 12.

All (267) close contacts within the same asymmetric unit are listed below, sorted by their clash magnitude.

Atom-1	Atom-2	Interatomic distance (Å)	Clash overlap (Å)
1:A:33:LYS:HE2	7:A:435:HOH:O	1.52	1.09
1:A:74:ILE:HD13	1:A:74:ILE:O	1.53	1.09
1:C:354:HIS:HB2	5:C:372:GOL:H32	1.40	1.03
1:C:268:VAL:HG13	1:C:327:MSE:HE1	1.48	0.95
1:D:85:HIS:H	1:D:98:THR:HG22	1.32	0.93
1:A:29:ASP:HB3	7:A:503:HOH:O	1.68	0.93
1:A:51:VAL:H	1:A:74:ILE:HD11	1.36	0.89
1:A:296:ALA:HB2	5:A:373:GOL:H2	1.53	0.89
1:D:244:CYS:H	1:D:279:ASN:HD21	1.19	0.87
1:A:33:LYS:CE	7:A:435:HOH:O	2.14	0.87
1:A:59:GLN:NE2	1:A:70:ARG:HD2	1.90	0.86
1:D:26:ASN:ND2	1:D:324:ASN:H	1.73	0.86
1:C:26:ASN:HD22	1:C:324:ASN:H	1.26	0.83
1:D:78:GLN:HE22	1:D:119:MSE:HG2	1.45	0.82
1:C:65:ALA:O	1:C:66:HIS:HB2	1.77	0.82
1:A:163:ARG:HH12	1:A:216:HIS:HD2	1.28	0.82

*Continued on next page...*

*Continued from previous page...*

Atom-1	Atom-2	Interatomic distance (Å)	Clash overlap (Å)
1:D:84:GLN:HB2	1:D:98:THR:HG21	1.60	0.82
1:A:74:ILE:O	1:A:74:ILE:CD1	2.30	0.80
1:A:59:GLN:HE21	1:A:70:ARG:HD2	1.46	0.79
1:C:298[B]:MSE:HE2	1:C:320:PRO:HD2	1.63	0.78
1:C:354:HIS:HB2	5:C:372:GOL:C3	2.14	0.78
1:C:26:ASN:ND2	1:C:324:ASN:H	1.81	0.78
1:C:354:HIS:CB	5:C:372:GOL:H32	2.15	0.76
1:A:163:ARG:NH1	1:A:216:HIS:HD2	1.84	0.75
1:D:159:ILE:HD11	1:D:161:LEU:CD2	2.17	0.74
1:A:119:MSE:CE	1:B:122:VAL:HG21	2.18	0.74
1:D:190:GLY:O	1:D:191:SER:HB2	1.88	0.74
1:C:109:THR:HG22	1:C:110:LEU:N	2.02	0.74
1:B:142:ASP:OD1	1:B:160:THR:HG21	1.89	0.73
1:A:162:THR:H	1:A:165:ASN:ND2	1.87	0.73
1:D:159:ILE:HD11	1:D:161:LEU:HD23	1.69	0.73
1:C:165:ASN:C	1:C:165:ASN:HD22	1.92	0.72
1:D:302:ASP:HB3	7:D:391:HOH:O	1.89	0.72
1:B:163:ARG:HH21	1:B:216:HIS:HD2	1.35	0.72
1:C:78:GLN:HE21	1:D:78:GLN:HE21	1.38	0.71
1:A:330:LYS:NZ	1:A:333:GLN:HE22	1.88	0.71
1:C:238:ASN:O	1:C:238:ASN:CG	2.30	0.70
1:C:65:ALA:O	1:C:66:HIS:CB	2.39	0.69
1:D:190:GLY:O	1:D:193:VAL:HG13	1.93	0.69
1:C:141:LYS:HE3	1:C:185:LYS:HD2	1.74	0.68
1:B:344:SER:O	1:B:348:GLU:HG3	1.93	0.68
1:A:277:GLU:HB2	7:A:490:HOH:O	1.93	0.68
1:A:121:ARG:HD2	7:A:466:HOH:O	1.93	0.68
1:D:26:ASN:HD22	1:D:324:ASN:H	1.40	0.67
1:B:276:SER:H	1:C:94:GLN:HE22	1.42	0.67
1:C:101[B]:VAL:CG2	1:C:351:LEU:HD21	2.24	0.67
1:B:244:CYS:H	1:B:279:ASN:HD21	1.44	0.66
1:D:191:SER:O	1:D:192:SER:HB2	1.96	0.66
1:A:163:ARG:HH12	1:A:216:HIS:CD2	2.10	0.66
1:A:30:ALA:HB2	1:A:339[B]:TYR:CD2	2.31	0.66
1:C:113:ASP:OD2	1:D:121:ARG:NH1	2.29	0.66
1:A:51:VAL:H	1:A:74:ILE:CD1	2.08	0.65
1:C:238:ASN:ND2	1:C:238:ASN:O	2.30	0.65
1:B:65:ALA:O	1:B:66:HIS:HB2	1.95	0.64
1:C:163:ARG:HH11	1:C:216:HIS:HD2	1.44	0.64
1:C:192:SER:HB3	2:C:370:ADP:O2B	1.97	0.64
1:A:59:GLN:HE21	1:A:70:ARG:HH11	1.45	0.64

*Continued on next page...*

*Continued from previous page...*

Atom-1	Atom-2	Interatomic distance (Å)	Clash overlap (Å)
1:A:119:MSE:HE1	1:B:122:VAL:HG11	1.78	0.64
1:C:101[B]:VAL:HG22	1:C:351:LEU:HD21	1.79	0.64
1:A:161:LEU:HA	1:A:165:ASN:HD21	1.63	0.64
1:C:162:THR:H	1:C:165:ASN:ND2	1.96	0.64
1:B:293:LEU:HD13	1:B:316:ILE:HD12	1.80	0.63
1:D:62:ASP:O	1:D:64:PRO:HD3	1.99	0.63
1:A:112:GLU:HG3	1:A:319:LEU:HB2	1.80	0.62
1:C:5:ARG:NH2	1:C:97:PRO:HB2	2.15	0.62
1:A:59:GLN:HE21	1:A:70:ARG:CD	2.11	0.62
1:A:119:MSE:HE1	1:B:122:VAL:HG21	1.81	0.62
1:C:26:ASN:HD22	1:C:324:ASN:N	1.95	0.61
1:D:189:GLN:HG3	1:D:190:GLY:H	1.64	0.61
1:A:185:LYS:HB3	1:A:195:VAL:HG22	1.82	0.61
1:A:59:GLN:CG	1:A:70:ARG:HD3	2.30	0.60
1:C:298[B]:MSE:HE2	1:C:320:PRO:CD	2.31	0.60
1:A:190:GLY:O	1:A:193:VAL:HG13	2.02	0.59
1:C:247:ILE:HG22	1:C:268:VAL:HG22	1.85	0.59
1:A:51:VAL:HG22	1:A:76:LEU:HD11	1.84	0.59
1:B:65:ALA:O	1:B:66:HIS:CB	2.51	0.59
1:D:78:GLN:NE2	1:D:119:MSE:HG2	2.17	0.58
1:C:191:SER:O	1:C:192:SER:CB	2.51	0.58
1:B:328:TYR:HB3	1:B:329:PRO:HD3	1.85	0.58
1:D:85:HIS:N	1:D:98:THR:HG22	2.12	0.58
1:D:85:HIS:HE1	7:D:447:HOH:O	1.85	0.58
1:B:315:GLU:OE2	2:B:370:ADP:O2B	2.21	0.58
1:C:126:PRO:HA	5:C:372:GOL:H31	1.85	0.58
1:B:276:SER:H	1:C:94:GLN:NE2	2.00	0.57
1:C:301:VAL:HG22	1:C:316:ILE:HD12	1.85	0.57
1:A:85:HIS:HD2	1:A:96:LEU:O	1.88	0.57
1:B:78:GLN:HG2	1:B:79:VAL:N	2.19	0.56
1:C:322:PHE:HE1	1:C:343[A]:ILE:HD11	1.71	0.56
1:A:30:ALA:HB2	1:A:339[B]:TYR:HD2	1.70	0.56
1:C:162:THR:H	1:C:165:ASN:HD21	1.54	0.56
1:A:107:HIS:HD2	1:A:319:LEU:O	1.89	0.56
1:C:165:ASN:HD22	1:C:166:ARG:N	2.04	0.56
1:A:59:GLN:NE2	1:A:70:ARG:HH11	2.04	0.55
1:B:107:HIS:HD2	1:B:319:LEU:O	1.88	0.55
1:C:165:ASN:C	1:C:165:ASN:ND2	2.59	0.55
1:A:216:HIS:HE1	1:B:357:ASN:OD1	1.88	0.55
1:C:185:LYS:HB3	1:C:195:VAL:HG22	1.88	0.55
1:C:216:HIS:HE1	1:D:357:ASN:OD1	1.89	0.55

*Continued on next page...*

*Continued from previous page...*

Atom-1	Atom-2	Interatomic distance (Å)	Clash overlap (Å)
1:D:51:VAL:CG2	1:D:96:LEU:HD21	2.37	0.55
1:D:190:GLY:O	1:D:193:VAL:CG1	2.54	0.55
1:A:165:ASN:C	1:A:165:ASN:HD22	2.09	0.55
1:B:78:GLN:HE22	1:B:119:MSE:HG2	1.72	0.55
1:D:121:ARG:HD3	7:D:399:HOH:O	2.08	0.54
1:A:191:SER:O	1:A:192:SER:HB2	2.07	0.54
1:C:62:ASP:OD2	1:C:62:ASP:N	2.40	0.54
1:D:26:ASN:HD22	1:D:324:ASN:N	2.05	0.54
1:D:30:ALA:CB	1:D:339[A]:TYR:CD2	2.90	0.54
1:B:139[A]:MSE:HG3	1:B:139[A]:MSE:O	2.07	0.54
1:C:198:VAL:HG11	1:C:204:TYR:HB2	1.89	0.54
1:A:192:SER:N	2:A:370:ADP:O2B	2.34	0.54
1:A:133:LEU:HD21	1:B:143:VAL:HG21	1.89	0.54
1:B:59:GLN:HG2	1:B:70:ARG:NH2	2.22	0.54
1:C:171:PHE:CD2	1:C:201:GLU:HG2	2.43	0.54
1:C:62:ASP:O	1:C:64:PRO:HD3	2.08	0.54
1:A:30:ALA:CB	1:A:339[B]:TYR:CD2	2.91	0.53
1:A:28:VAL:HG21	1:A:40:LEU:HD21	1.90	0.53
1:D:189:GLN:HG3	1:D:190:GLY:N	2.23	0.53
1:C:298[B]:MSE:HE1	1:C:322:PHE:CD2	2.43	0.53
1:A:330:LYS:HZ2	1:A:333:GLN:HE22	1.55	0.53
1:B:163:ARG:HG3	7:B:392:HOH:O	2.08	0.53
1:C:17:HIS:O	1:C:21:LEU:HG	2.10	0.52
1:C:133:LEU:HD21	1:D:143:VAL:HG21	1.90	0.52
7:C:384:HOH:O	1:D:146:ARG:HD2	2.09	0.52
1:C:131:ASP:OD1	1:C:353:ARG:NH2	2.33	0.52
1:C:328:TYR:HB3	1:C:329:PRO:HD3	1.92	0.52
1:C:275:PRO:HB2	1:C:278:VAL:HG23	1.92	0.52
1:A:190:GLY:O	1:A:193:VAL:CG1	2.58	0.51
1:A:330:LYS:HZ3	1:A:333:GLN:HE22	1.55	0.51
1:A:59:GLN:HG3	1:A:70:ARG:HD3	1.92	0.51
1:A:59:GLN:NE2	1:A:70:ARG:CD	2.68	0.51
1:D:262:ASP:O	1:D:263:ASP:HB2	2.11	0.51
1:A:165:ASN:C	1:A:165:ASN:ND2	2.63	0.51
1:C:163:ARG:NH2	1:C:212:PHE:HB3	2.26	0.51
1:A:8[B]:ILE:O	1:A:8[B]:ILE:HG13	2.09	0.51
1:C:78:GLN:HE21	1:D:78:GLN:NE2	2.06	0.51
1:C:63:ASP:CG	1:C:65:ALA:O	2.50	0.51
1:A:163:ARG:NH1	1:A:216:HIS:CD2	2.72	0.50
1:D:7:GLY:HA2	1:D:39:VAL:HG22	1.92	0.50
1:C:298[B]:MSE:HE2	1:C:320:PRO:CG	2.41	0.50

*Continued on next page...*

*Continued from previous page...*

Atom-1	Atom-2	Interatomic distance (Å)	Clash overlap (Å)
1:B:14:SER:HB2	7:B:457:HOH:O	2.12	0.49
1:C:63:ASP:OD1	1:C:65:ALA:O	2.30	0.49
1:C:143:VAL:HG21	1:D:133:LEU:HD21	1.93	0.49
1:C:300:ARG:NH1	5:C:371:GOL:H31	2.27	0.49
1:D:293:LEU:CD2	1:D:316:ILE:HG13	2.41	0.49
1:C:348:GLU:O	1:C:352:GLU:HG3	2.12	0.49
1:A:51:VAL:HG23	1:A:74:ILE:HD11	1.94	0.49
1:D:16:GLU:OE2	1:D:191:SER:OG	2.25	0.49
1:B:287:ILE:O	1:B:291:GLN:HG3	2.13	0.48
1:D:124:ASN:HB3	7:D:379:HOH:O	2.13	0.48
1:A:33:LYS:HE3	7:A:435:HOH:O	1.98	0.48
1:C:329:PRO:O	1:C:333:GLN:HG3	2.14	0.48
1:D:26:ASN:HD22	1:D:323:THR:HA	1.78	0.48
1:C:354:HIS:CA	5:C:372:GOL:H32	2.42	0.48
1:C:161:LEU:HA	1:C:165:ASN:HD21	1.79	0.48
1:C:173:GLU:HG2	1:C:177:ARG:NH2	2.28	0.48
1:C:14:SER:OG	1:C:16:GLU:HG2	2.14	0.48
1:D:192:SER:N	2:D:370:ADP:O2B	2.44	0.47
1:C:101[A]:VAL:HG13	1:C:351:LEU:HD21	1.96	0.47
1:B:163:ARG:NH1	7:B:461:HOH:O	2.46	0.47
1:D:109:THR:O	1:D:110:LEU:HB3	2.13	0.47
1:C:318:THR:O	1:C:319:LEU:HD23	2.14	0.47
1:D:112:GLU:OE2	1:D:317[B]:ASN:OD1	2.32	0.47
1:D:112:GLU:CG	1:D:319:LEU:HB2	2.45	0.47
1:C:191:SER:O	1:C:192:SER:OG	2.30	0.47
1:C:357:ASN:OD1	1:D:216:HIS:HE1	1.97	0.47
1:C:175:GLU:OE1	1:C:180:LEU:HD11	2.16	0.46
1:C:230:GLU:OE2	1:C:327:MSE:HG2	2.16	0.46
1:D:232:ALA:HB1	1:D:328:TYR:CE1	2.50	0.46
1:D:330:LYS:HD3	1:D:339[B]:TYR:OH	2.15	0.46
1:A:74:ILE:O	1:A:74:ILE:CG1	2.61	0.46
1:B:86:GLN:HG2	1:B:123:ALA:O	2.16	0.46
1:D:112:GLU:HG3	1:D:319:LEU:HB2	1.98	0.46
1:C:139:MSE:HA	1:C:139:MSE:HE2	1.97	0.46
1:C:321:GLY:HA3	5:C:371:GOL:H2	1.98	0.46
1:A:118:GLY:O	1:A:122:VAL:HG23	2.16	0.46
1:D:243:THR:O	1:D:331:LEU:HD22	2.16	0.46
1:A:259:LYS:HA	1:A:264:ASN:ND2	2.32	0.45
1:C:298[B]:MSE:HE2	1:C:320:PRO:HG2	1.98	0.45
1:A:51:VAL:N	1:A:74:ILE:HD11	2.18	0.45
1:A:94:GLN:HA	1:A:95:PRO:HD3	1.79	0.45

*Continued on next page...*



*Continued from previous page...*

Atom-1	Atom-2	Interatomic distance (Å)	Clash overlap (Å)
1:B:4:LEU:HD22	1:B:100:ASP:CB	2.47	0.45
1:B:289:ALA:HB1	1:B:316:ILE:HD11	1.98	0.45
1:D:165:ASN:C	1:D:165:ASN:OD1	2.55	0.45
1:B:59:GLN:HG2	1:B:70:ARG:CZ	2.47	0.45
1:A:248:VAL:HB	1:A:267:GLN:HB3	1.99	0.44
1:A:213:GLU:HG2	1:B:361:LYS:HZ1	1.82	0.44
1:D:228:GLU:HG3	7:D:391:HOH:O	2.16	0.44
1:D:26:ASN:HD22	1:D:323:THR:CA	2.29	0.44
1:D:149:ARG:HB2	1:D:155:ILE:HD11	1.99	0.44
1:A:163:ARG:HH11	1:A:163:ARG:HG3	1.82	0.44
1:C:166:ARG:HG3	1:C:212:PHE:CE1	2.52	0.44
1:D:107:HIS:HD2	1:D:319:LEU:O	2.00	0.44
1:D:30:ALA:HB2	1:D:339[A]:TYR:CD2	2.52	0.44
1:A:357:ASN:OD1	1:B:216:HIS:HE1	2.01	0.44
1:C:301:VAL:HG13	1:C:316:ILE:CD1	2.48	0.44
1:A:162:THR:H	1:A:165:ASN:HD21	1.63	0.44
1:A:51:VAL:HG23	1:A:76:LEU:HD21	1.99	0.44
1:C:119:MSE:HG3	1:D:119:MSE:HG3	1.99	0.44
1:C:67:ILE:O	1:C:67:ILE:HG23	2.16	0.44
1:D:51:VAL:HG23	1:D:76:LEU:HD21	2.00	0.44
1:D:104:PRO:HD2	1:D:128:VAL:HB	1.99	0.44
1:D:261:ILE:HG22	1:D:261:ILE:O	2.17	0.43
1:D:84:GLN:HB2	1:D:98:THR:CG2	2.41	0.43
1:B:119:MSE:HB3	1:B:119:MSE:HE2	1.92	0.43
1:B:363:THR:HG22	7:B:480:HOH:O	2.18	0.43
1:C:196:SER:HB2	1:C:207:ALA:HB1	2.00	0.43
1:C:298[B]:MSE:HE1	1:C:322:PHE:HD2	1.82	0.43
1:D:30:ALA:CB	1:D:339[A]:TYR:HD2	2.28	0.43
1:D:30:ALA:HB2	1:D:339[A]:TYR:HD2	1.83	0.43
1:B:24:ALA:O	1:B:28:VAL:HG23	2.18	0.43
1:D:123:ALA:HA	7:D:425:HOH:O	2.19	0.43
1:D:301:VAL:HG13	1:D:316:ILE:CD1	2.48	0.43
1:D:317[B]:ASN:ND2	1:D:320:PRO:HA	2.33	0.43
1:A:53:ASP:O	1:A:57:TYR:HB3	2.19	0.43
1:D:51:VAL:HG21	1:D:96:LEU:HD21	2.00	0.43
1:A:86:GLN:HG2	1:A:123:ALA:O	2.19	0.43
1:C:140:ASP:HB2	1:C:188:ASN:HD21	1.83	0.43
1:C:56:ASN:O	1:C:70[A]:ARG:HD2	2.17	0.43
1:A:146:ARG:HD2	7:B:408:HOH:O	2.17	0.43
1:D:121:ARG:CD	7:D:399:HOH:O	2.67	0.43
1:A:59:GLN:HG3	1:A:70:ARG:CD	2.49	0.43

*Continued on next page...*

*Continued from previous page...*

Atom-1	Atom-2	Interatomic distance (Å)	Clash overlap (Å)
1:C:63:ASP:C	1:C:63:ASP:OD1	2.57	0.43
1:D:261:ILE:CG2	1:D:265:GLY:N	2.82	0.43
1:A:39:VAL:HG22	1:A:41:LEU:HD13	2.01	0.42
1:A:59:GLN:CG	1:A:70:ARG:CD	2.97	0.42
1:A:52:ASN:HB3	1:A:57:TYR:HB2	2.01	0.42
1:B:57:TYR:CD1	1:B:58:LEU:HG	2.54	0.42
1:A:109:THR:O	1:A:110:LEU:HB2	2.19	0.42
1:A:77:ALA:HB2	1:B:79:VAL:HG22	2.01	0.42
1:C:5:ARG:CZ	1:C:97:PRO:HB2	2.49	0.42
1:D:70:ARG:HG3	1:D:71:PRO:HD2	2.01	0.42
1:B:293:LEU:CD1	1:B:316:ILE:HD12	2.48	0.42
1:A:322:PHE:O	1:A:339[B]:TYR:OH	2.35	0.42
1:B:146:ARG:HD2	7:B:404:HOH:O	2.19	0.42
1:D:301:VAL:HG22	1:D:316:ILE:HD12	2.01	0.42
1:D:101:VAL:HG13	1:D:351:LEU:HD21	2.01	0.42
1:B:175:GLU:HG3	1:B:180:LEU:HG	2.01	0.41
1:C:287:ILE:O	1:C:291:GLN:HG3	2.19	0.41
1:A:32:ASP:C	1:A:32:ASP:OD1	2.57	0.41
1:A:60:ASN:N	1:A:60:ASN:ND2	2.67	0.41
1:B:191:SER:O	1:B:192:SER:OG	2.30	0.41
1:B:325:ILE:O	1:B:330:LYS:HD2	2.20	0.41
1:C:353:ARG:NH1	5:C:372:GOL:O2	2.53	0.41
1:D:105:ILE:HD12	1:D:105:ILE:HA	1.89	0.41
1:C:325:ILE:HD12	1:C:325:ILE:O	2.20	0.41
1:D:101:VAL:HG12	1:D:126:PRO:HB2	2.02	0.41
1:A:166:ARG:HG3	1:A:212:PHE:CE1	2.55	0.41
1:C:322:PHE:HE1	1:C:343[A]:ILE:CD1	2.34	0.41
2:C:370:ADP:O1A	2:C:370:ADP:O1B	2.38	0.41
1:A:143:VAL:HG21	1:B:133:LEU:HD21	2.01	0.41
1:A:51:VAL:CG2	1:A:76:LEU:HD11	2.48	0.41
1:D:315:GLU:OE2	2:D:370:ADP:O3B	2.39	0.41
1:C:105:ILE:HA	1:C:105:ILE:HD12	1.92	0.41
1:C:30:ALA:CB	1:C:339:TYR:HD2	2.33	0.41
1:D:82:LYS:NZ	7:D:396:HOH:O	2.53	0.41
1:A:192:SER:OG	2:A:370:ADP:H5'1	2.21	0.41
1:D:159:ILE:CD1	1:D:161:LEU:HD23	2.46	0.41
1:D:175:GLU:HG3	1:D:180:LEU:HG	2.02	0.41
1:A:79:VAL:HG22	1:B:77:ALA:HB2	2.02	0.40
1:B:85:HIS:H	1:B:98:THR:CG2	2.33	0.40
1:D:159:ILE:HD11	1:D:161:LEU:HD21	1.99	0.40
1:D:63:ASP:O	1:D:65:ALA:O	2.38	0.40

*Continued on next page...*

Continued from previous page...

Atom-1	Atom-2	Interatomic distance (Å)	Clash overlap (Å)
1:C:145:LYS:HE3	1:C:158:PHE:CD2	2.56	0.40
1:D:298:MSE:HB3	1:D:346:LEU:HD21	2.03	0.40
1:C:298[B]:MSE:HB3	1:C:346:LEU:HD21	2.03	0.40
1:D:244:CYS:HB2	1:D:279:ASN:ND2	2.37	0.40
1:A:328:TYR:HB3	1:A:329:PRO:HD3	2.03	0.40

There are no symmetry-related clashes.

## 5.3 Torsion angles [i](#)

### 5.3.1 Protein backbone [i](#)

In the following table, the Percentiles column shows the percent Ramachandran outliers of the chain as a percentile score with respect to all X-ray entries followed by that with respect to entries of similar resolution.

The Analysed column shows the number of residues for which the backbone conformation was analysed, and the total number of residues.

Mol	Chain	Analysed	Favoured	Allowed	Outliers	Percentiles	
1	A	356/367 (97%)	347 (98%)	9 (2%)	0	100	100
1	B	343/367 (94%)	329 (96%)	13 (4%)	1 (0%)	43	48
1	C	345/367 (94%)	335 (97%)	10 (3%)	0	100	100
1	D	355/367 (97%)	346 (98%)	9 (2%)	0	100	100
All	All	1399/1468 (95%)	1357 (97%)	41 (3%)	1 (0%)	53	62

All (1) Ramachandran outliers are listed below:

Mol	Chain	Res	Type
1	B	66	HIS

### 5.3.2 Protein sidechains [i](#)

In the following table, the Percentiles column shows the percent sidechain outliers of the chain as a percentile score with respect to all X-ray entries followed by that with respect to entries of similar resolution.

The Analysed column shows the number of residues for which the sidechain conformation was analysed, and the total number of residues.

Mol	Chain	Analysed	Rotameric	Outliers	Percentiles	
1	A	294/293 (100%)	276 (94%)	18 (6%)	20	23
1	B	282/293 (96%)	265 (94%)	17 (6%)	21	24
1	C	285/293 (97%)	265 (93%)	20 (7%)	16	18
1	D	294/293 (100%)	280 (95%)	14 (5%)	28	34
All	All	1155/1172 (98%)	1086 (94%)	69 (6%)	21	24

All (69) residues with a non-rotameric sidechain are listed below:

Mol	Chain	Res	Type
1	A	14	SER
1	A	16	GLU
1	A	29	ASP
1	A	39	VAL
1	A	41	LEU
1	A	55	GLU
1	A	74	ILE
1	A	94	GLN
1	A	103	PHE
1	A	165	ASN
1	A	166	ARG
1	A	177	ARG
1	A	191	SER
1	A	192	SER
1	A	193	VAL
1	A	259	LYS
1	A	308	ASP
1	A	358	ASN
1	B	39	VAL
1	B	62	ASP
1	B	78	GLN
1	B	91	GLN
1	B	98	THR
1	B	103	PHE
1	B	139[A]	MSE
1	B	139[C]	MSE
1	B	160	THR
1	B	163	ARG
1	B	177	ARG
1	B	267	GLN
1	B	273	GLN
1	B	317	ASN
1	B	319	LEU

*Continued on next page...*

*Continued from previous page...*

Mol	Chain	Res	Type
1	B	322	PHE
1	B	325	ILE
1	C	38	VAL
1	C	39	VAL
1	C	41	LEU
1	C	55	GLU
1	C	59	GLN
1	C	62	ASP
1	C	66	HIS
1	C	101[A]	VAL
1	C	101[B]	VAL
1	C	103	PHE
1	C	163	ARG
1	C	164	THR
1	C	165	ASN
1	C	166	ARG
1	C	173	GLU
1	C	185	LYS
1	C	191	SER
1	C	201	GLU
1	C	227	ARG
1	C	238	ASN
1	D	39	VAL
1	D	41	LEU
1	D	66	HIS
1	D	84	GLN
1	D	101	VAL
1	D	103	PHE
1	D	131	ASP
1	D	159	ILE
1	D	192	SER
1	D	193	VAL
1	D	261	ILE
1	D	293	LEU
1	D	319	LEU
1	D	325	ILE

Some sidechains can be flipped to improve hydrogen bonding and reduce clashes. All (31) such sidechains are listed below:

Mol	Chain	Res	Type
1	A	59	GLN
1	A	60	ASN

*Continued on next page...*

*Continued from previous page...*

Mol	Chain	Res	Type
1	A	85	HIS
1	A	107	HIS
1	A	165	ASN
1	A	188	ASN
1	A	189	GLN
1	A	216	HIS
1	A	264	ASN
1	A	333	GLN
1	B	78	GLN
1	B	107	HIS
1	B	216	HIS
1	B	279	ASN
1	C	26	ASN
1	C	52	ASN
1	C	94	GLN
1	C	165	ASN
1	C	188	ASN
1	C	189	GLN
1	C	216	HIS
1	C	238	ASN
1	D	26	ASN
1	D	48	GLN
1	D	78	GLN
1	D	91	GLN
1	D	107	HIS
1	D	189	GLN
1	D	206	GLN
1	D	216	HIS
1	D	279	ASN

### 5.3.3 RNA ⓘ

There are no RNA molecules in this entry.

### 5.4 Non-standard residues in protein, DNA, RNA chains ⓘ

There are no non-standard protein/DNA/RNA residues in this entry.

### 5.5 Carbohydrates ⓘ

There are no carbohydrates in this entry.

## 5.6 Ligand geometry

Of 17 ligands modelled in this entry, 3 are monoatomic - leaving 14 for Mogul analysis.

In the following table, the Counts columns list the number of bonds (or angles) for which Mogul statistics could be retrieved, the number of bonds (or angles) that are observed in the model and the number of bonds (or angles) that are defined in the Chemical Component Dictionary. The Link column lists molecule types, if any, to which the group is linked. The Z score for a bond length (or angle) is the number of standard deviations the observed value is removed from the expected value. A bond length (or angle) with  $|Z| > 2$  is considered an outlier worth inspection. RMSZ is the root-mean-square of all Z scores of the bond lengths (or angles).

Mol	Type	Chain	Res	Link	Bond lengths			Bond angles		
					Counts	RMSZ	# Z  > 2	Counts	RMSZ	# Z  > 2
2	ADP	A	370	4	25,29,29	1.15	3 (12%)	25,45,45	1.67	2 (8%)
3	FMT	A	371	-	0,2,2	0.00	-	0,1,1	0.00	-
5	GOL	A	373	-	5,5,5	0.33	0	5,5,5	0.79	0
2	ADP	B	370	4	25,29,29	1.08	2 (8%)	25,45,45	1.73	3 (12%)
3	FMT	B	372	-	0,2,2	0.00	-	0,1,1	0.00	-
3	FMT	B	373	-	0,2,2	0.00	-	0,1,1	0.00	-
3	FMT	B	374	-	0,2,2	0.00	-	0,1,1	0.00	-
6	SO4	B	375	-	4,4,4	0.16	0	6,6,6	0.21	0
5	GOL	B	376	-	5,5,5	0.39	0	5,5,5	0.32	0
2	ADP	C	370	-	25,29,29	1.12	2 (8%)	25,45,45	1.59	3 (12%)
5	GOL	C	371	-	5,5,5	0.39	0	5,5,5	0.74	0
5	GOL	C	372	-	5,5,5	0.49	0	5,5,5	0.70	0
2	ADP	D	370	4	25,29,29	1.18	2 (8%)	25,45,45	1.64	2 (8%)
3	FMT	D	371	-	0,2,2	0.00	-	0,1,1	0.00	-

In the following table, the Chirals column lists the number of chiral outliers, the number of chiral centers analysed, the number of these observed in the model and the number defined in the Chemical Component Dictionary. Similar counts are reported in the Torsion and Rings columns. '-' means no outliers of that kind were identified.

Mol	Type	Chain	Res	Link	Chirals	Torsions	Rings
2	ADP	A	370	4	-	0/12/32/32	0/3/3/3
3	FMT	A	371	-	-	0/0/0/0	0/0/0/0
5	GOL	A	373	-	-	0/4/4/4	0/0/0/0
2	ADP	B	370	4	-	0/12/32/32	0/3/3/3
3	FMT	B	372	-	-	0/0/0/0	0/0/0/0
3	FMT	B	373	-	-	0/0/0/0	0/0/0/0
3	FMT	B	374	-	-	0/0/0/0	0/0/0/0
6	SO4	B	375	-	-	0/0/0/0	0/0/0/0
5	GOL	B	376	-	-	0/4/4/4	0/0/0/0
2	ADP	C	370	-	-	0/12/32/32	0/3/3/3

*Continued on next page...*

*Continued from previous page...*

Mol	Type	Chain	Res	Link	Chirals	Torsions	Rings
5	GOL	C	371	-	-	0/4/4/4	0/0/0/0
5	GOL	C	372	-	-	0/4/4/4	0/0/0/0
2	ADP	D	370	4	-	0/12/32/32	0/3/3/3
3	FMT	D	371	-	-	0/0/0/0	0/0/0/0

All (9) bond length outliers are listed below:

Mol	Chain	Res	Type	Atoms	Z	Observed(Å)	Ideal(Å)
2	A	370	ADP	C2-N3	2.02	1.35	1.32
2	B	370	ADP	O4'-C1'	2.14	1.44	1.41
2	C	370	ADP	C2-N3	2.19	1.35	1.32
2	A	370	ADP	O4'-C1'	2.32	1.44	1.41
2	D	370	ADP	O4'-C1'	2.78	1.45	1.41
2	B	370	ADP	C5-C4	2.78	1.46	1.40
2	A	370	ADP	C5-C4	3.29	1.47	1.40
2	C	370	ADP	C5-C4	3.33	1.48	1.40
2	D	370	ADP	C5-C4	3.40	1.48	1.40

All (10) bond angle outliers are listed below:

Mol	Chain	Res	Type	Atoms	Z	Observed(°)	Ideal(°)
2	A	370	ADP	N3-C2-N1	-6.24	123.52	128.86
2	D	370	ADP	N3-C2-N1	-6.16	123.59	128.86
2	B	370	ADP	N3-C2-N1	-5.85	123.85	128.86
2	C	370	ADP	N3-C2-N1	-5.53	124.13	128.86
2	B	370	ADP	PA-O3A-PB	-3.36	121.33	132.63
2	D	370	ADP	C4-C5-N7	-3.22	106.30	109.41
2	A	370	ADP	C4-C5-N7	-3.03	106.48	109.41
2	C	370	ADP	C4-C5-N7	-2.94	106.57	109.41
2	C	370	ADP	PA-O3A-PB	-2.62	123.83	132.63
2	B	370	ADP	C4-C5-N7	-2.12	107.36	109.41

There are no chirality outliers.

There are no torsion outliers.

There are no ring outliers.

7 monomers are involved in 16 short contacts:

Mol	Chain	Res	Type	Clashes	Symm-Clashes
2	A	370	ADP	2	0
5	A	373	GOL	1	0

*Continued on next page...*



*Continued from previous page...*

Mol	Chain	Res	Type	Clashes	Symm-Clashes
2	B	370	ADP	1	0
2	C	370	ADP	2	0
5	C	371	GOL	2	0
5	C	372	GOL	6	0
2	D	370	ADP	2	0

## 5.7 Other polymers [i](#)

There are no such residues in this entry.

## 5.8 Polymer linkage issues [i](#)

There are no chain breaks in this entry.

## 6 Fit of model and data

### 6.1 Protein, DNA and RNA chains

In the following table, the column labelled ‘#RSRZ> 2’ contains the number (and percentage) of RSRZ outliers, followed by percent RSRZ outliers for the chain as percentile scores relative to all X-ray entries and entries of similar resolution. The OWAB column contains the minimum, median, 95<sup>th</sup> percentile and maximum values of the occupancy-weighted average B-factor per residue. The column labelled ‘Q< 0.9’ lists the number of (and percentage) of residues with an average occupancy less than 0.9.

Mol	Chain	Analysed	<RSRZ>	#RSRZ>2	OWAB(Å <sup>2</sup> )	Q<0.9
1	A	353/367 (96%)	-0.32	8 (2%) 60 58	24, 41, 88, 121	0
1	B	342/367 (93%)	-0.35	5 (1%) 73 72	22, 40, 73, 110	0
1	C	340/367 (92%)	-0.28	11 (3%) 47 45	26, 44, 88, 128	0
1	D	351/367 (95%)	-0.37	7 (1%) 65 63	25, 40, 79, 119	0
All	All	1386/1468 (94%)	-0.33	31 (2%) 62 59	22, 41, 84, 128	0

All (31) RSRZ outliers are listed below:

Mol	Chain	Res	Type	RSRZ
1	C	249	LEU	8.3
1	D	260	TYR	5.9
1	A	260	TYR	3.9
1	B	249	LEU	3.7
1	C	108	GLY	3.5
1	D	62	ASP	3.3
1	A	66	HIS	3.2
1	B	191	SER	3.2
1	C	62	ASP	3.0
1	C	172	ALA	2.9
1	D	66	HIS	2.9
1	C	169	PHE	2.8
1	D	61	ALA	2.6
1	C	248	VAL	2.6
1	D	363	THR	2.5
1	C	61	ALA	2.5
1	D	167	HIS	2.4
1	A	199	ALA	2.4
1	A	201	GLU	2.4
1	A	170	SER	2.4
1	C	191	SER	2.4

*Continued on next page...*

*Continued from previous page...*

Mol	Chain	Res	Type	RSRZ
1	C	66	HIS	2.3
1	B	73	ALA	2.2
1	A	62	ASP	2.2
1	B	267	GLN	2.2
1	D	261	ILE	2.1
1	A	174	VAL	2.1
1	C	65	ALA	2.0
1	A	204	TYR	2.0
1	B	363	THR	2.0
1	C	192	SER	2.0

## 6.2 Non-standard residues in protein, DNA, RNA chains [i](#)

There are no non-standard protein/DNA/RNA residues in this entry.

## 6.3 Carbohydrates [i](#)

There are no carbohydrates in this entry.

## 6.4 Ligands [i](#)

In the following table, the Atoms column lists the number of modelled atoms in the group and the number defined in the chemical component dictionary. The B-factors column lists the minimum, median, 95<sup>th</sup> percentile and maximum values of B factors of atoms in the group. The column labelled 'Q< 0.9' lists the number of atoms with occupancy less than 0.9.

Mol	Type	Chain	Res	Atoms	RSCC	RSR	B-factors(Å <sup>2</sup> )	Q<0.9
6	SO4	B	375	5/5	0.79	0.25	126,127,129,132	0
5	GOL	B	376	6/6	0.84	0.26	67,72,77,78	0
3	FMT	A	371	3/3	0.85	0.21	35,35,46,47	0
5	GOL	C	371	6/6	0.86	0.13	69,74,79,80	0
3	FMT	B	373	3/3	0.86	0.13	40,40,53,53	0
5	GOL	A	373	6/6	0.88	0.24	39,65,69,71	0
4	MG	B	371	1/1	0.91	0.43	85,85,85,85	0
5	GOL	C	372	6/6	0.93	0.19	43,63,66,71	0
3	FMT	B	372	3/3	0.94	0.11	48,48,52,57	0
2	ADP	B	370	27/27	0.94	0.11	34,51,116,120	0
2	ADP	C	370	27/27	0.94	0.12	43,65,149,158	0
3	FMT	B	374	3/3	0.95	0.17	55,55,60,60	0
2	ADP	A	370	27/27	0.96	0.10	36,48,54,58	0

*Continued on next page...*

*Continued from previous page...*

Mol	Type	Chain	Res	Atoms	RSCC	RSR	B-factors( $\text{\AA}^2$ )	Q<0.9
3	FMT	D	371	3/3	0.96	0.19	36,36,43,46	0
2	ADP	D	370	27/27	0.97	0.08	37,46,54,61	0
4	MG	A	372	1/1	0.97	0.16	35,35,35,35	0
4	MG	D	372	1/1	0.98	0.11	36,36,36,36	0

## 6.5 Other polymers [i](#)

There are no such residues in this entry.