



wwPDB X-ray Structure Validation Summary Report ⓘ

Mar 13, 2018 – 06:02 pm GMT

PDB ID : 2Q9B
Title : Structure of FTSY:GMPPNP Complex
Authors : Reyes, C.L.; Stroud, R.M.
Deposited on : 2007-06-12
Resolution : 2.30 Å(reported)

This is a wwPDB X-ray Structure Validation Summary Report for a publicly released PDB entry.

We welcome your comments at validation@mail.wwpdb.org

A user guide is available at

<https://www.wwpdb.org/validation/2017/XrayValidationReportHelp>

with specific help available everywhere you see the ⓘ symbol.

The following versions of software and data (see [references ⓘ](#)) were used in the production of this report:

MolProbity : 4.02b-467
Mogul : 1.7.3 (157068), CSD as539be (2018)
Xtriage (Phenix) : 1.13
EDS : trunk31020
Percentile statistics : 20171227.v01 (using entries in the PDB archive December 27th 2017)
Refmac : 5.8.0158
CCP4 : 7.0 (Gargrove)
Ideal geometry (proteins) : Engh & Huber (2001)
Ideal geometry (DNA, RNA) : Parkinson et al. (1996)
Validation Pipeline (wwPDB-VP) : trunk31020

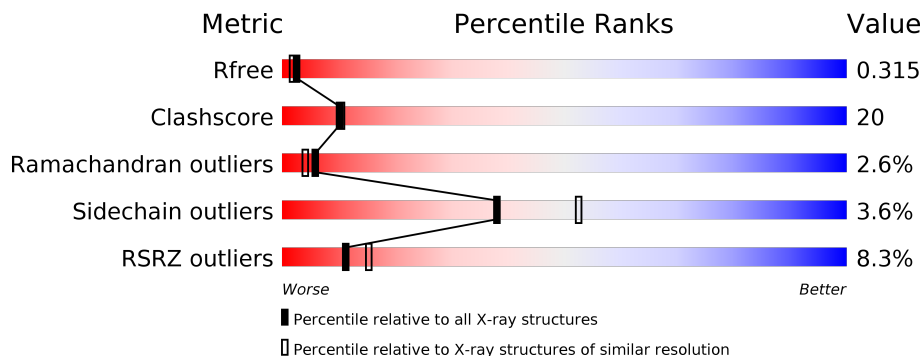
1 Overall quality at a glance ⓘ

The following experimental techniques were used to determine the structure:

X-RAY DIFFRACTION

The reported resolution of this entry is 2.30 Å.

Percentile scores (ranging between 0-100) for global validation metrics of the entry are shown in the following graphic. The table shows the number of entries on which the scores are based.



Metric	Whole archive (#Entries)	Similar resolution (#Entries, resolution range(Å))
R_{free}	111664	4477 (2.30-2.30)
Clashscore	122126	5072 (2.30-2.30)
Ramachandran outliers	120053	5022 (2.30-2.30)
Sidechain outliers	120020	5021 (2.30-2.30)
RSRZ outliers	108989	4374 (2.30-2.30)

The table below summarises the geometric issues observed across the polymeric chains and their fit to the electron density. The red, orange, yellow and green segments on the lower bar indicate the fraction of residues that contain outliers for ≥ 3 , 2, 1 and 0 types of geometric quality criteria. A grey segment represents the fraction of residues that are not modelled. The numeric value for each fraction is indicated below the corresponding segment, with a dot representing fractions $\leq 5\%$. The upper red bar (where present) indicates the fraction of residues that have poor fit to the electron density. The numeric value is given above the bar.

Mol	Chain	Length	Quality of chain
1	A	304	<div> <div>6%</div> <div>66%</div> <div>29%</div> <div>••</div> </div>
1	B	304	<div> <div>10%</div> <div>57%</div> <div>33%</div> <div>• 6%</div> </div>

The following table lists non-polymeric compounds, carbohydrate monomers and non-standard residues in protein, DNA, RNA chains that are outliers for geometric or electron-density-fit criteria:

Mol	Type	Chain	Res	Chirality	Geometry	Clashes	Electron density
2	SO4	A	956	-	X	-	X
3	EDO	A	905	-	-	-	X

2 Entry composition [i](#)

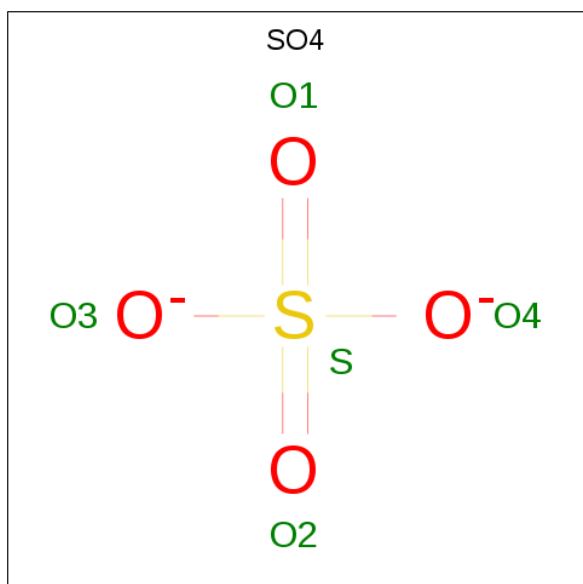
There are 5 unique types of molecules in this entry. The entry contains 4818 atoms, of which 0 are hydrogens and 0 are deuteriums.

In the tables below, the ZeroOcc column contains the number of atoms modelled with zero occupancy, the AltConf column contains the number of residues with at least one atom in alternate conformation and the Trace column contains the number of residues modelled with at most 2 atoms.

- Molecule 1 is a protein called Cell division protein ftsY.

Mol	Chain	Residues	Atoms					ZeroOcc	AltConf	Trace
1	A	303	Total	C	N	O	S	0	0	0
			2318	1481	404	426	7			
1	B	287	Total	C	N	O	S	0	0	0
			2181	1396	372	406	7			

- Molecule 2 is SULFATE ION (three-letter code: SO4) (formula: O₄S).



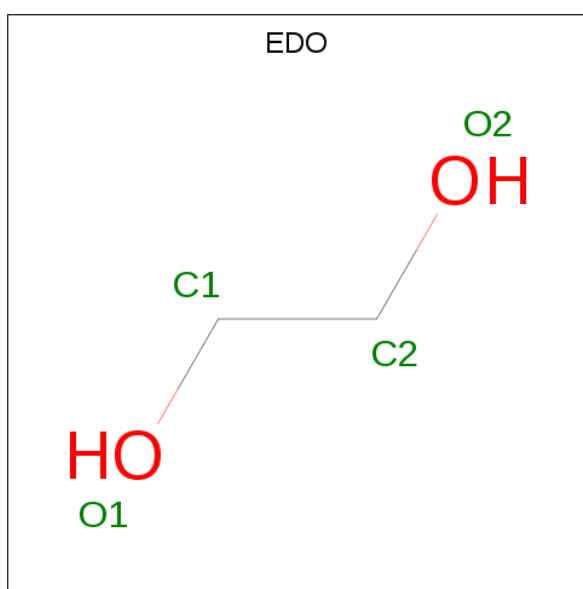
Mol	Chain	Residues	Atoms			ZeroOcc	AltConf
2	A	1	Total	O	S	0	0
			5	4	1		
2	A	1	Total	O	S	0	0
			5	4	1		
2	A	1	Total	O	S	0	0
			5	4	1		
2	A	1	Total	O	S	0	0
			5	4	1		

Continued on next page...

Continued from previous page...

Mol	Chain	Residues	Atoms			ZeroOcc	AltConf
2	A	1	Total	O	S	0	0
			5	4	1		
2	A	1	Total	O	S	0	0
			5	4	1		
2	B	1	Total	O	S	0	0
			5	4	1		
2	B	1	Total	O	S	0	0
			5	4	1		

- Molecule 3 is 1,2-ETHANEDIOL (three-letter code: EDO) (formula: C₂H₆O₂).



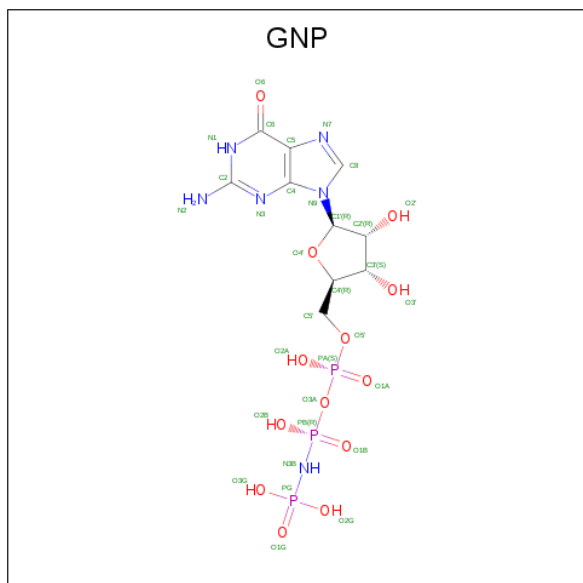
Mol	Chain	Residues	Atoms			ZeroOcc	AltConf
3	A	1	Total	C	O	0	0
			4	2	2		
3	A	1	Total	C	O	0	0
			4	2	2		
3	A	1	Total	C	O	0	0
			4	2	2		
3	B	1	Total	C	O	0	0
			4	2	2		
3	B	1	Total	C	O	0	0
			4	2	2		
3	B	1	Total	C	O	0	0
			4	2	2		
3	B	1	Total	C	O	0	0
			4	2	2		

Continued on next page...

Continued from previous page...

Mol	Chain	Residues	Atoms			ZeroOcc	AltConf
3	B	1	Total	C	O	0	0
			4	2	2		
3	B	1	Total	C	O	0	0
			4	2	2		

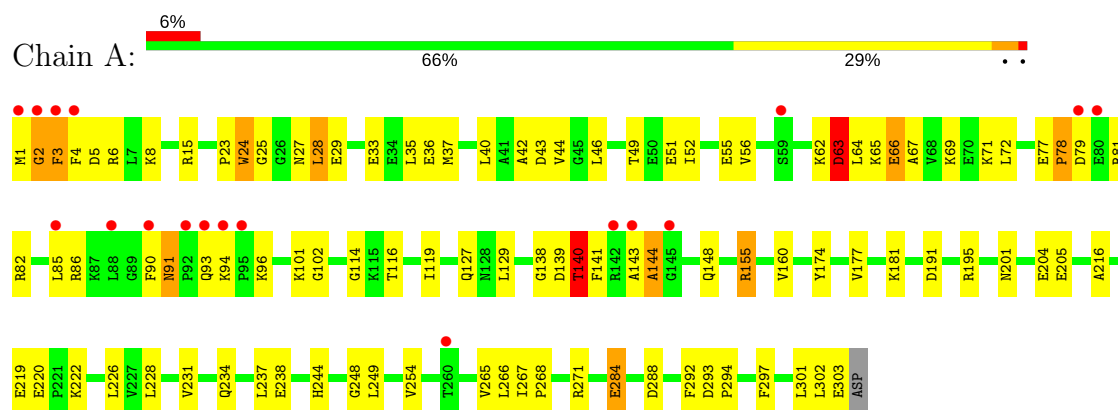
- Molecule 4 is PHOSPHOAMINOPHOSPHONIC ACID-GUANYLATE ESTER (three-letter code: GNP) (formula: $C_{10}H_{17}N_6O_{13}P_3$).



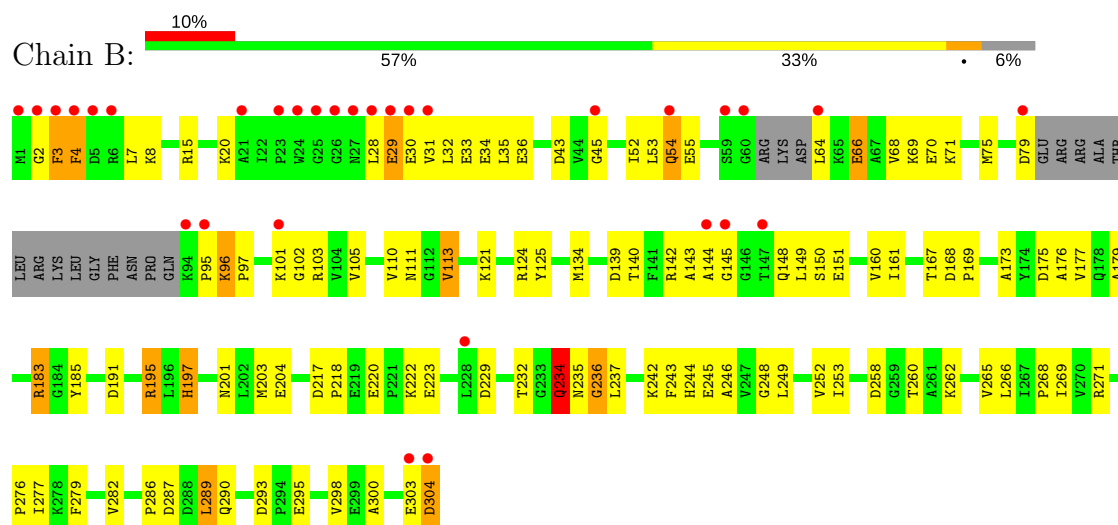
3 Residue-property plots [i](#)

These plots are drawn for all protein, RNA and DNA chains in the entry. The first graphic for a chain summarises the proportions of the various outlier classes displayed in the second graphic. The second graphic shows the sequence view annotated by issues in geometry and electron density. Residues are color-coded according to the number of geometric quality criteria for which they contain at least one outlier: green = 0, yellow = 1, orange = 2 and red = 3 or more. A red dot above a residue indicates a poor fit to the electron density ($RSRZ > 2$). Stretches of 2 or more consecutive residues without any outlier are shown as a green connector. Residues present in the sample, but not in the model, are shown in grey.

• Molecule 1: Cell division protein ftsY



• Molecule 1: Cell division protein ftsY



4 Data and refinement statistics

Property	Value	Source
Space group	P 21 21 21	Depositor
Cell constants a, b, c, α , β , γ	63.84Å 97.30Å 99.28Å 90.00° 90.00° 90.00°	Depositor
Resolution (Å)	36.35 – 2.30 36.35 – 2.30	Depositor EDS
% Data completeness (in resolution range)	89.9 (36.35-2.30) 90.0 (36.35-2.30)	Depositor EDS
R_{merge}	(Not available)	Depositor
R_{sym}	(Not available)	Depositor
$\langle I/\sigma(I) \rangle$ ¹	1.59 (at 2.29Å)	Xtriage
Refinement program	CNS 1.2	Depositor
R, R_{free}	0.208 , 0.269 0.248 , 0.315	Depositor DCC
R_{free} test set	1730 reflections (6.83%)	wwPDB-VP
Wilson B-factor (Å ²)	38.7	Xtriage
Anisotropy	0.329	Xtriage
Bulk solvent k_{sol} (e/Å ³), B_{sol} (Å ²)	0.32 , 49.3	EDS
L-test for twinning ²	$\langle L \rangle = 0.49$, $\langle L^2 \rangle = 0.33$	Xtriage
Estimated twinning fraction	0.018 for -h,l,k	Xtriage
F_o, F_c correlation	0.91	EDS
Total number of atoms	4818	wwPDB-VP
Average B, all atoms (Å ²)	35.0	wwPDB-VP

Xtriage's analysis on translational NCS is as follows: *The largest off-origin peak in the Patterson function is 5.27% of the height of the origin peak. No significant pseudotranslation is detected.*

¹Intensities estimated from amplitudes.

²Theoretical values of $\langle |L| \rangle$, $\langle L^2 \rangle$ for acentric reflections are 0.5, 0.333 respectively for untwinned datasets, and 0.375, 0.2 for perfectly twinned datasets.

5 Model quality [i](#)

5.1 Standard geometry [i](#)

Bond lengths and bond angles in the following residue types are not validated in this section: GNP, SO4, EDO

The Z score for a bond length (or angle) is the number of standard deviations the observed value is removed from the expected value. A bond length (or angle) with $|Z| > 5$ is considered an outlier worth inspection. RMSZ is the root-mean-square of all Z scores of the bond lengths (or angles).

Mol	Chain	Bond lengths		Bond angles	
		RMSZ	$\# Z > 5$	RMSZ	$\# Z > 5$
1	A	1.24	7/2356 (0.3%)	1.04	8/3178 (0.3%)
1	B	1.25	11/2215 (0.5%)	1.05	13/2987 (0.4%)
All	All	1.25	18/4571 (0.4%)	1.04	21/6165 (0.3%)

The worst 5 of 18 bond length outliers are listed below:

Mol	Chain	Res	Type	Atoms	Z	Observed(Å)	Ideal(Å)
1	B	245	GLU	CD-OE1	7.35	1.33	1.25
1	A	160	VAL	CB-CG1	6.70	1.67	1.52
1	B	185	TYR	CD2-CE2	6.60	1.49	1.39
1	B	282	VAL	CB-CG2	6.49	1.66	1.52
1	B	183	ARG	CZ-NH1	6.40	1.41	1.33

The worst 5 of 21 bond angle outliers are listed below:

Mol	Chain	Res	Type	Atoms	Z	Observed(°)	Ideal(°)
1	A	63	ASP	CB-CG-OD2	8.98	126.39	118.30
1	B	217	ASP	CB-CG-OD2	8.14	125.63	118.30
1	A	293	ASP	CB-CG-OD2	6.70	124.33	118.30
1	B	195	ARG	NE-CZ-NH2	-6.49	117.06	120.30
1	A	155	ARG	NE-CZ-NH1	6.02	123.31	120.30

There are no chirality outliers.

There are no planarity outliers.

5.2 Too-close contacts [i](#)

In the following table, the Non-H and H(model) columns list the number of non-hydrogen atoms and hydrogen atoms in the chain respectively. The H(added) column lists the number of hydrogen

atoms added and optimized by MolProbity. The Clashes column lists the number of clashes within the asymmetric unit, whereas Symm-Clashes lists symmetry related clashes.

Mol	Chain	Non-H	H(model)	H(added)	Clashes	Symm-Clashes
1	A	2318	0	2421	94	0
1	B	2181	0	2268	104	0
2	A	30	0	0	1	0
2	B	10	0	0	0	0
3	A	12	0	18	2	0
3	B	24	0	36	5	0
4	A	32	0	13	6	0
5	A	110	0	0	6	0
5	B	101	0	0	4	0
All	All	4818	0	4756	189	0

The all-atom clashscore is defined as the number of clashes found per 1000 atoms (including hydrogen atoms). The all-atom clashscore for this structure is 20.

The worst 5 of 189 close contacts within the same asymmetric unit are listed below, sorted by their clash magnitude.

Atom-1	Atom-2	Interatomic distance (Å)	Clash overlap (Å)
1:B:28:LEU:HD23	1:B:29:GLU:N	1.71	1.04
1:B:8:LYS:NZ	1:B:303:GLU:HG3	1.84	0.92
1:B:266:LEU:HG	1:B:277:ILE:HD13	1.55	0.89
1:B:28:LEU:CD2	1:B:29:GLU:HG3	2.04	0.87
1:A:86:ARG:HD2	5:A:982:HOH:O	1.75	0.85

There are no symmetry-related clashes.

5.3 Torsion angles [i](#)

5.3.1 Protein backbone [i](#)

In the following table, the Percentiles column shows the percent Ramachandran outliers of the chain as a percentile score with respect to all X-ray entries followed by that with respect to entries of similar resolution.

The Analysed column shows the number of residues for which the backbone conformation was analysed, and the total number of residues.

Mol	Chain	Analysed	Favoured	Allowed	Outliers	Percentiles
1	A	301/304 (99%)	274 (91%)	18 (6%)	9 (3%)	5 3

Continued on next page...

Continued from previous page...

Mol	Chain	Analysed	Favoured	Allowed	Outliers	Percentiles	
1	B	281/304 (92%)	257 (92%)	18 (6%)	6 (2%)	8	6
All	All	582/608 (96%)	531 (91%)	36 (6%)	15 (3%)	6	4

5 of 15 Ramachandran outliers are listed below:

Mol	Chain	Res	Type
1	A	24	TRP
1	A	63	ASP
1	A	2	GLY
1	A	28	LEU
1	A	93	GLN

5.3.2 Protein sidechains ⓘ

In the following table, the Percentiles column shows the percent sidechain outliers of the chain as a percentile score with respect to all X-ray entries followed by that with respect to entries of similar resolution.

The Analysed column shows the number of residues for which the sidechain conformation was analysed, and the total number of residues.

Mol	Chain	Analysed	Rotameric	Outliers	Percentiles	
1	A	241/242 (100%)	235 (98%)	6 (2%)	50	68
1	B	227/242 (94%)	216 (95%)	11 (5%)	28	39
All	All	468/484 (97%)	451 (96%)	17 (4%)	38	52

5 of 17 residues with a non-rotameric sidechain are listed below:

Mol	Chain	Res	Type
1	B	4	PHE
1	B	43	ASP
1	B	197	HIS
1	B	3	PHE
1	B	234	GLN

Some sidechains can be flipped to improve hydrogen bonding and reduce clashes. 5 of 14 such sidechains are listed below:

Mol	Chain	Res	Type
1	A	178	GLN
1	A	197	HIS

Continued on next page...

Continued from previous page...

Mol	Chain	Res	Type
1	B	111	ASN
1	A	148	GLN
1	B	54	GLN

5.3.3 RNA ⓘ

There are no RNA molecules in this entry.

5.4 Non-standard residues in protein, DNA, RNA chains ⓘ

There are no non-standard protein/DNA/RNA residues in this entry.

5.5 Carbohydrates ⓘ

There are no carbohydrates in this entry.

5.6 Ligand geometry ⓘ

18 ligands are modelled in this entry.

In the following table, the Counts columns list the number of bonds (or angles) for which Mogul statistics could be retrieved, the number of bonds (or angles) that are observed in the model and the number of bonds (or angles) that are defined in the Chemical Component Dictionary. The Link column lists molecule types, if any, to which the group is linked. The Z score for a bond length (or angle) is the number of standard deviations the observed value is removed from the expected value. A bond length (or angle) with $|Z| > 2$ is considered an outlier worth inspection. RMSZ is the root-mean-square of all Z scores of the bond lengths (or angles).

Mol	Type	Chain	Res	Link	Bond lengths			Bond angles		
					Counts	RMSZ	$\# Z > 2$	Counts	RMSZ	$\# Z > 2$
3	EDO	A	904	-	3,3,3	0.35	0	2,2,2	0.10	0
3	EDO	A	905	-	3,3,3	0.53	0	2,2,2	0.54	0
3	EDO	A	907	-	3,3,3	0.51	0	2,2,2	0.20	0
4	GNP	A	950	-	27,34,34	2.79	11 (40%)	30,54,54	3.19	12 (40%)
2	SO4	A	952	-	4,4,4	0.28	0	6,6,6	0.74	0
2	SO4	A	953	-	4,4,4	0.08	0	6,6,6	0.67	0
2	SO4	A	954	-	4,4,4	0.46	0	6,6,6	0.84	0
2	SO4	A	956	-	4,4,4	0.83	0	6,6,6	5.05	6 (100%)
2	SO4	A	958	-	4,4,4	0.41	0	6,6,6	0.56	0
2	SO4	A	959	-	4,4,4	0.29	0	6,6,6	0.66	0

Mol	Type	Chain	Res	Link	Bond lengths			Bond angles		
					Counts	RMSZ	# Z > 2	Counts	RMSZ	# Z > 2
3	EDO	B	900	-	3,3,3	0.55	0	2,2,2	0.33	0
3	EDO	B	901	-	3,3,3	0.57	0	2,2,2	0.88	0
3	EDO	B	902	-	3,3,3	0.32	0	2,2,2	0.16	0
3	EDO	B	903	-	3,3,3	0.42	0	2,2,2	0.07	0
3	EDO	B	906	-	3,3,3	0.70	0	2,2,2	0.37	0
3	EDO	B	908	-	3,3,3	0.39	0	2,2,2	0.67	0
2	SO4	B	955	-	4,4,4	0.29	0	6,6,6	0.89	0
2	SO4	B	957	-	4,4,4	0.38	0	6,6,6	1.08	0

In the following table, the Chirals column lists the number of chiral outliers, the number of chiral centers analysed, the number of these observed in the model and the number defined in the Chemical Component Dictionary. Similar counts are reported in the Torsion and Rings columns. '-' means no outliers of that kind were identified.

Mol	Type	Chain	Res	Link	Chirals	Torsions	Rings
3	EDO	A	904	-	-	0/1/1/1	0/0/0/0
3	EDO	A	905	-	-	0/1/1/1	0/0/0/0
3	EDO	A	907	-	-	0/1/1/1	0/0/0/0
4	GNP	A	950	-	-	0/16/38/38	0/3/3/3
2	SO4	A	952	-	-	0/0/0/0	0/0/0/0
2	SO4	A	953	-	-	0/0/0/0	0/0/0/0
2	SO4	A	954	-	-	0/0/0/0	0/0/0/0
2	SO4	A	956	-	-	0/0/0/0	0/0/0/0
2	SO4	A	958	-	-	0/0/0/0	0/0/0/0
2	SO4	A	959	-	-	0/0/0/0	0/0/0/0
3	EDO	B	900	-	-	0/1/1/1	0/0/0/0
3	EDO	B	901	-	-	0/1/1/1	0/0/0/0
3	EDO	B	902	-	-	0/1/1/1	0/0/0/0
3	EDO	B	903	-	-	0/1/1/1	0/0/0/0
3	EDO	B	906	-	-	0/1/1/1	0/0/0/0
3	EDO	B	908	-	-	0/1/1/1	0/0/0/0
2	SO4	B	955	-	-	0/0/0/0	0/0/0/0
2	SO4	B	957	-	-	0/0/0/0	0/0/0/0

The worst 5 of 11 bond length outliers are listed below:

Mol	Chain	Res	Type	Atoms	Z	Observed(Å)	Ideal(Å)
4	A	950	GNP	C4-N9	-4.65	1.41	1.47
4	A	950	GNP	PB-O3A	-4.48	1.53	1.59
4	A	950	GNP	PB-O2B	-4.40	1.44	1.56
4	A	950	GNP	PB-O1B	-3.36	1.42	1.46
4	A	950	GNP	C8-N9	-3.25	1.37	1.46

The worst 5 of 18 bond angle outliers are listed below:

Mol	Chain	Res	Type	Atoms	Z	Observed(°)	Ideal(°)
4	A	950	GNP	O6-C6-N1	-7.96	112.13	122.71
2	A	956	SO4	O4-S-O3	-6.22	81.16	108.83
4	A	950	GNP	O3A-PB-N3B	-6.07	89.75	106.59
2	A	956	SO4	O4-S-O2	-5.01	82.18	109.24
2	A	956	SO4	O3-S-O1	-4.52	84.83	109.24

There are no chirality outliers.

There are no torsion outliers.

There are no ring outliers.

6 monomers are involved in 14 short contacts:

Mol	Chain	Res	Type	Clashes	Symm-Clashes
3	A	905	EDO	2	0
4	A	950	GNP	6	0
2	A	952	SO4	1	0
3	B	901	EDO	1	0
3	B	902	EDO	1	0
3	B	908	EDO	3	0

5.7 Other polymers [i](#)

There are no such residues in this entry.

5.8 Polymer linkage issues [i](#)

There are no chain breaks in this entry.

6 Fit of model and data [i](#)

6.1 Protein, DNA and RNA chains [i](#)

In the following table, the column labelled ‘#RSRZ > 2’ contains the number (and percentage) of RSRZ outliers, followed by percent RSRZ outliers for the chain as percentile scores relative to all X-ray entries and entries of similar resolution. The OWAB column contains the minimum, median, 95th percentile and maximum values of the occupancy-weighted average B-factor per residue. The column labelled ‘Q < 0.9’ lists the number of (and percentage) of residues with an average occupancy less than 0.9.

Mol	Chain	Analysed	<RSRZ>	#RSRZ>2	OWAB(Å ²)	Q<0.9
1	A	303/304 (99%)	0.33	18 (5%) 22 29	22, 33, 42, 54	0
1	B	287/304 (94%)	0.43	31 (10%) 6 8	22, 34, 41, 51	0
All	All	590/608 (97%)	0.38	49 (8%) 11 15	22, 34, 42, 54	0

The worst 5 of 49 RSRZ outliers are listed below:

Mol	Chain	Res	Type	RSRZ
1	B	28	LEU	7.9
1	A	1	MET	6.2
1	B	1	MET	6.2
1	A	143	ALA	5.2
1	B	145	GLY	4.9

6.2 Non-standard residues in protein, DNA, RNA chains [i](#)

There are no non-standard protein/DNA/RNA residues in this entry.

6.3 Carbohydrates [i](#)

There are no carbohydrates in this entry.

6.4 Ligands [i](#)

In the following table, the Atoms column lists the number of modelled atoms in the group and the number defined in the chemical component dictionary. The B-factors column lists the minimum, median, 95th percentile and maximum values of B factors of atoms in the group. The column labelled ‘Q < 0.9’ lists the number of atoms with occupancy less than 0.9.

Mol	Type	Chain	Res	Atoms	RSCC	RSR	B-factors(\AA^2)	Q<0.9
3	EDO	B	906	4/4	0.55	0.25	65,68,70,72	0
3	EDO	A	905	4/4	0.57	0.43	68,69,72,73	0
3	EDO	B	903	4/4	0.69	0.36	70,70,72,73	0
3	EDO	B	900	4/4	0.70	0.21	57,58,58,60	0
2	SO4	A	956	5/5	0.75	0.41	74,78,78,83	0
3	EDO	A	907	4/4	0.81	0.17	72,72,73,75	0
4	GNP	A	950	32/32	0.81	0.29	54,72,78,80	0
3	EDO	B	902	4/4	0.82	0.28	49,56,59,68	0
3	EDO	B	901	4/4	0.83	0.40	47,54,59,59	0
3	EDO	A	904	4/4	0.85	0.13	57,62,63,66	0
2	SO4	A	958	5/5	0.88	0.19	73,76,76,78	0
3	EDO	B	908	4/4	0.90	0.24	52,53,54,54	0
2	SO4	A	953	5/5	0.96	0.15	53,55,59,59	0
2	SO4	A	954	5/5	0.96	0.11	50,57,62,62	0
2	SO4	A	959	5/5	0.97	0.12	57,59,61,61	0
2	SO4	B	955	5/5	0.97	0.18	47,53,54,56	0
2	SO4	B	957	5/5	0.97	0.16	46,47,49,50	0
2	SO4	A	952	5/5	0.98	0.18	49,50,52,54	0

6.5 Other polymers [i](#)

There are no such residues in this entry.