



# wwPDB X-ray Structure Validation Summary Report ⓘ

Mar 14, 2018 – 01:34 am GMT

PDB ID : 3QBK  
Title : Bromide-bound form of pharaonis halorhodopsin  
Authors : Kouyama, T.; Kanada, S.  
Deposited on : 2011-01-13  
Resolution : 2.20 Å(reported)

This is a wwPDB X-ray Structure Validation Summary Report for a publicly released PDB entry.

We welcome your comments at [validation@mail.wwpdb.org](mailto:validation@mail.wwpdb.org)

A user guide is available at

<https://www.wwpdb.org/validation/2017/XrayValidationReportHelp>

with specific help available everywhere you see the ⓘ symbol.

---

The following versions of software and data (see [references ⓘ](#)) were used in the production of this report:

MolProbity : 4.02b-467  
Mogul : 1.7.3 (157068), CSD as539be (2018)  
Xtriage (Phenix) : 1.13  
EDS : trunk31020  
Percentile statistics : 20171227.v01 (using entries in the PDB archive December 27th 2017)  
Refmac : 5.8.0158  
CCP4 : 7.0 (Gargrove)  
Ideal geometry (proteins) : Engh & Huber (2001)  
Ideal geometry (DNA, RNA) : Parkinson et al. (1996)  
Validation Pipeline (wwPDB-VP) : trunk31020

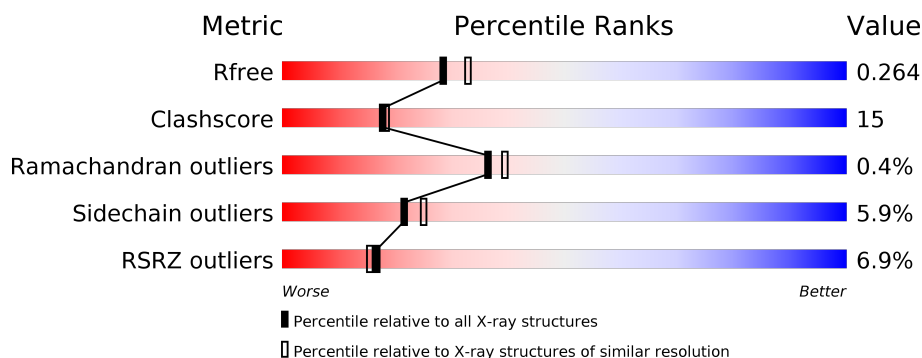
# 1 Overall quality at a glance

The following experimental techniques were used to determine the structure:

## *X-RAY DIFFRACTION*

The reported resolution of this entry is 2.20 Å.

Percentile scores (ranging between 0-100) for global validation metrics of the entry are shown in the following graphic. The table shows the number of entries on which the scores are based.



Metric	Whole archive (#Entries)	Similar resolution (#Entries, resolution range(Å))
$R_{free}$	111664	4343 (2.20-2.20)
Clashscore	122126	5027 (2.20-2.20)
Ramachandran outliers	120053	4952 (2.20-2.20)
Sidechain outliers	120020	4953 (2.20-2.20)
RSRZ outliers	108989	4245 (2.20-2.20)

The table below summarises the geometric issues observed across the polymeric chains and their fit to the electron density. The red, orange, yellow and green segments on the lower bar indicate the fraction of residues that contain outliers for  $\geq 3$ , 2, 1 and 0 types of geometric quality criteria. A grey segment represents the fraction of residues that are not modelled. The numeric value for each fraction is indicated below the corresponding segment, with a dot representing fractions  $\leq 5\%$ . The upper red bar (where present) indicates the fraction of residues that have poor fit to the electron density. The numeric value is given above the bar.

Mol	Chain	Length	Quality of chain
1	A	291	<div> <div>5%</div> <div> <div></div> <div>68%</div> <div>20%</div> <div>•</div> <div>10%</div> </div> </div>
1	B	291	<div> <div>3%</div> <div> <div></div> <div>68%</div> <div>18%</div> <div>•</div> <div>11%</div> </div> </div>
1	D	291	<div> <div>11%</div> <div> <div></div> <div>56%</div> <div>31%</div> <div>•</div> <div>11%</div> </div> </div>

## 2 Entry composition [i](#)

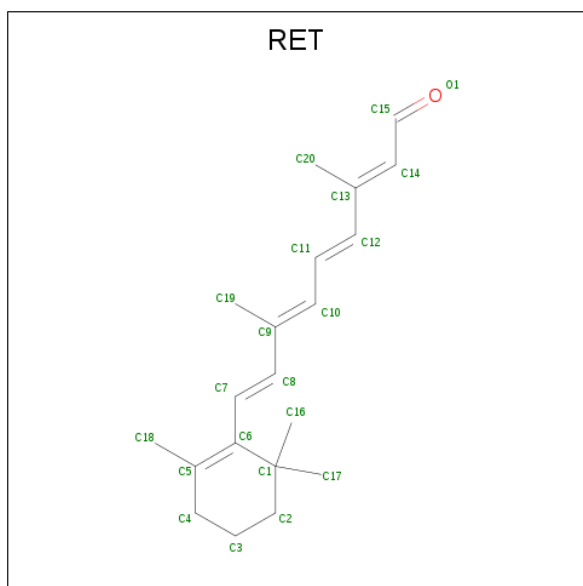
There are 5 unique types of molecules in this entry. The entry contains 6153 atoms, of which 0 are hydrogens and 0 are deuteriums.

In the tables below, the ZeroOcc column contains the number of atoms modelled with zero occupancy, the AltConf column contains the number of residues with at least one atom in alternate conformation and the Trace column contains the number of residues modelled with at most 2 atoms.

- Molecule 1 is a protein called Halorhodopsin.

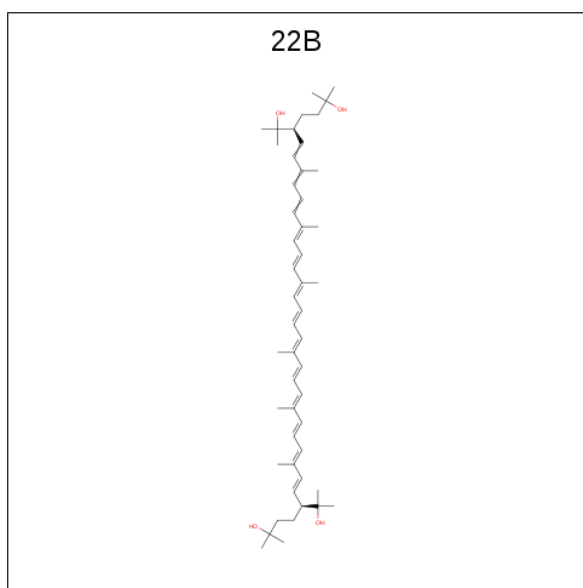
Mol	Chain	Residues	Atoms					ZeroOcc	AltConf	Trace
1	A	261	Total	C	N	O	S	0	0	0
			1968	1305	300	352	11			
1	B	259	Total	C	N	O	S	0	0	0
			1957	1299	298	349	11			
1	D	259	Total	C	N	O	S	0	0	0
			1957	1299	298	349	11			

- Molecule 2 is RETINAL (three-letter code: RET) (formula:  $C_{20}H_{28}O$ ).



Mol	Chain	Residues	Atoms		ZeroOcc	AltConf
2	A	1	Total	C	0	0
			20	20		
2	B	1	Total	C	0	0
			20	20		
2	D	1	Total	C	0	0
			20	20		

- Molecule 3 is BACTERIORUBERIN (three-letter code: 22B) (formula:  $C_{50}H_{76}O_4$ ).



Mol	Chain	Residues	Atoms			ZeroOcc	AltConf
3	A	1	Total	C	O	0	0
			27	25	2		
3	B	1	Total	C	O	0	0
			27	25	2		

- Molecule 4 is BROMIDE ION (three-letter code: BR) (formula: Br).

Mol	Chain	Residues	Atoms		ZeroOcc	AltConf
4	B	1	Total	Br	0	0
			1	1		
4	A	3	Total	Br	0	0
			3	3		
4	D	2	Total	Br	0	0
			2	2		

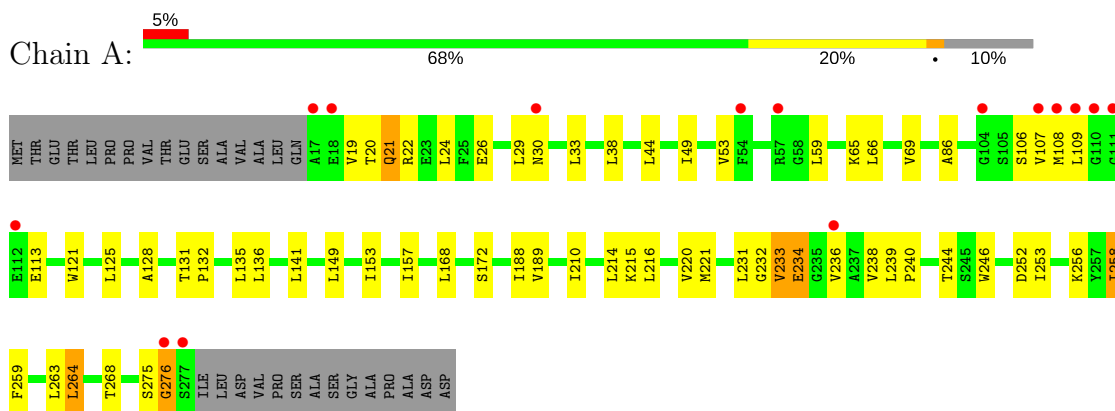
- Molecule 5 is water.

Mol	Chain	Residues	Atoms		ZeroOcc	AltConf
5	A	52	Total	O	0	0
			52	52		
5	B	65	Total	O	0	0
			65	65		
5	D	34	Total	O	0	0
			34	34		

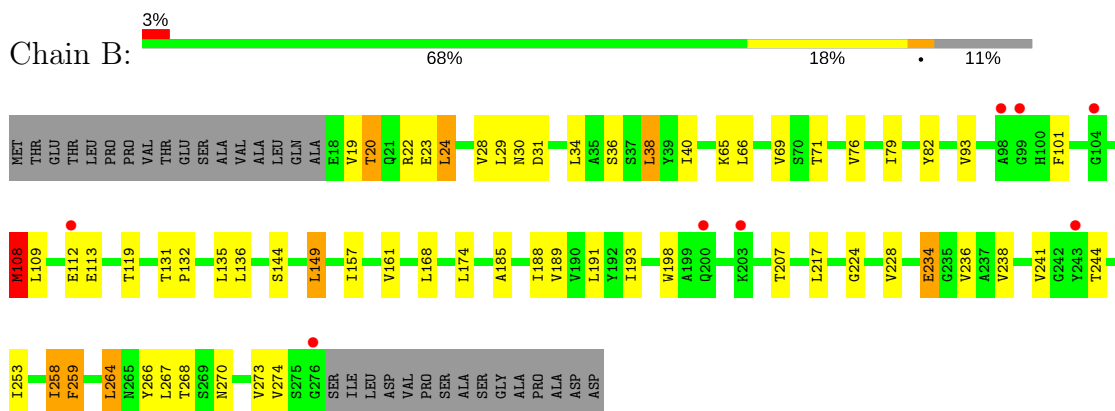
### 3 Residue-property plots

These plots are drawn for all protein, RNA and DNA chains in the entry. The first graphic for a chain summarises the proportions of the various outlier classes displayed in the second graphic. The second graphic shows the sequence view annotated by issues in geometry and electron density. Residues are color-coded according to the number of geometric quality criteria for which they contain at least one outlier: green = 0, yellow = 1, orange = 2 and red = 3 or more. A red dot above a residue indicates a poor fit to the electron density ( $RSRZ > 2$ ). Stretches of 2 or more consecutive residues without any outlier are shown as a green connector. Residues present in the sample, but not in the model, are shown in grey.

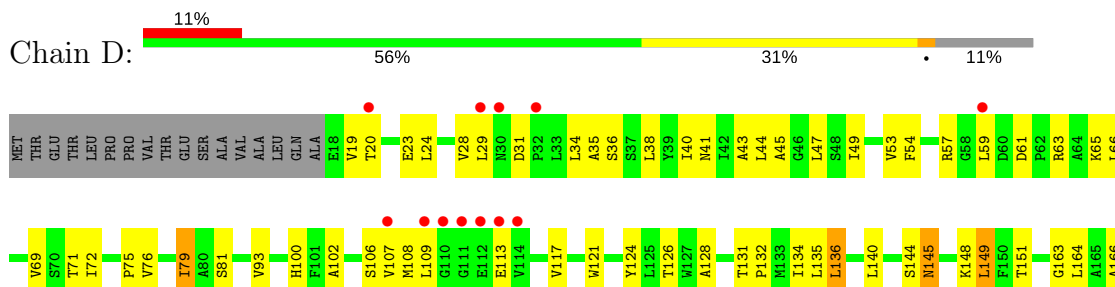
#### • Molecule 1: Halorhodopsin

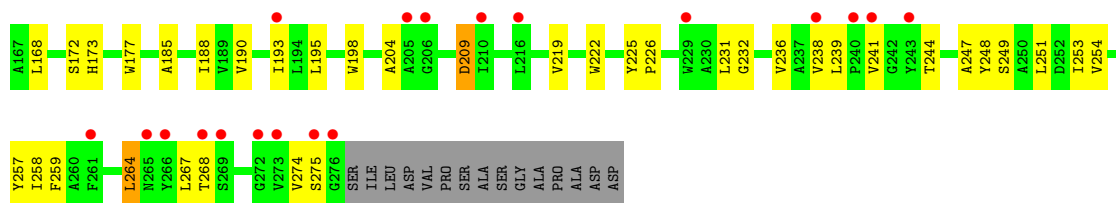


#### • Molecule 1: Halorhodopsin



#### • Molecule 1: Halorhodopsin





## 4 Data and refinement statistics

Property	Value	Source
Space group	C 1 2 1	Depositor
Cell constants a, b, c, $\alpha$ , $\beta$ , $\gamma$	152.15Å 99.72Å 99.97Å 90.00° 127.80° 90.00°	Depositor
Resolution (Å)	15.00 – 2.20 49.91 – 2.20	Depositor EDS
% Data completeness (in resolution range)	97.3 (15.00-2.20) 97.2 (49.91-2.20)	Depositor EDS
$R_{merge}$	0.10	Depositor
$R_{sym}$	(Not available)	Depositor
$\langle I/\sigma(I) \rangle$ <sup>1</sup>	2.54 (at 2.20Å)	Xtriage
Refinement program	CNS	Depositor
R, $R_{free}$	0.248 , 0.267 0.245 , 0.264	Depositor DCC
$R_{free}$ test set	2936 reflections (5.04%)	wwPDB-VP
Wilson B-factor (Å <sup>2</sup> )	33.2	Xtriage
Anisotropy	0.369	Xtriage
Bulk solvent $k_{sol}$ (e/Å <sup>3</sup> ), $B_{sol}$ (Å <sup>2</sup> )	0.40 , 80.8	EDS
L-test for twinning <sup>2</sup>	$\langle  L  \rangle = 0.49$ , $\langle L^2 \rangle = 0.32$	Xtriage
Estimated twinning fraction	No twinning to report.	Xtriage
$F_o, F_c$ correlation	0.92	EDS
Total number of atoms	6153	wwPDB-VP
Average B, all atoms (Å <sup>2</sup> )	42.0	wwPDB-VP

Xtriage's analysis on translational NCS is as follows: *The largest off-origin peak in the Patterson function is 5.38% of the height of the origin peak. No significant pseudotranslation is detected.*

<sup>1</sup>Intensities estimated from amplitudes.

<sup>2</sup>Theoretical values of  $\langle |L| \rangle$ ,  $\langle L^2 \rangle$  for acentric reflections are 0.5, 0.333 respectively for untwinned datasets, and 0.375, 0.2 for perfectly twinned datasets.

## 5 Model quality [i](#)

### 5.1 Standard geometry [i](#)

Bond lengths and bond angles in the following residue types are not validated in this section: RET, BR, 22B

The Z score for a bond length (or angle) is the number of standard deviations the observed value is removed from the expected value. A bond length (or angle) with  $|Z| > 5$  is considered an outlier worth inspection. RMSZ is the root-mean-square of all Z scores of the bond lengths (or angles).

Mol	Chain	Bond lengths		Bond angles	
		RMSZ	$\# Z  > 5$	RMSZ	$\# Z  > 5$
1	A	0.39	0/2014	0.59	0/2758
1	B	0.36	0/2003	0.56	0/2743
1	D	0.32	0/2003	0.54	0/2743
All	All	0.35	0/6020	0.56	0/8244

There are no bond length outliers.

There are no bond angle outliers.

There are no chirality outliers.

There are no planarity outliers.

### 5.2 Too-close contacts [i](#)

In the following table, the Non-H and H(model) columns list the number of non-hydrogen atoms and hydrogen atoms in the chain respectively. The H(added) column lists the number of hydrogen atoms added and optimized by MolProbity. The Clashes column lists the number of clashes within the asymmetric unit, whereas Symm-Clashes lists symmetry related clashes.

Mol	Chain	Non-H	H(model)	H(added)	Clashes	Symm-Clashes
1	A	1968	0	2019	46	0
1	B	1957	0	2009	50	0
1	D	1957	0	2009	79	0
2	A	20	0	27	1	0
2	B	20	0	27	1	0
2	D	20	0	27	2	0
3	A	27	0	37	2	0
3	B	27	0	37	1	0
4	A	3	0	0	0	0
4	B	1	0	0	0	0

*Continued on next page...*

*Continued from previous page...*

Mol	Chain	Non-H	H(model)	H(added)	Clashes	Symm-Clashes
4	D	2	0	0	0	0
5	A	52	0	0	2	1
5	B	65	0	0	2	0
5	D	34	0	0	2	0
All	All	6153	0	6192	178	1

The all-atom clashscore is defined as the number of clashes found per 1000 atoms (including hydrogen atoms). The all-atom clashscore for this structure is 15.

The worst 5 of 178 close contacts within the same asymmetric unit are listed below, sorted by their clash magnitude.

Atom-1	Atom-2	Interatomic distance (Å)	Clash overlap (Å)
1:A:238:VAL:HG23	1:A:239:LEU:HD13	1.47	0.96
1:B:236:VAL:HG13	1:B:238:VAL:HG13	1.56	0.88
1:D:145:ASN:HD21	1:D:148:LYS:HG3	1.49	0.78
1:D:254:VAL:HA	1:D:258:ILE:HG22	1.63	0.77
1:D:195:LEU:HD21	1:D:219:VAL:HG21	1.67	0.77

All (1) symmetry-related close contacts are listed below. The label for Atom-2 includes the symmetry operator and encoded unit-cell translations to be applied.

Atom-1	Atom-2	Interatomic distance (Å)	Clash overlap (Å)
5:A:600:HOH:O	5:A:600:HOH:O[2_656]	1.55	0.65

## 5.3 Torsion angles [i](#)

### 5.3.1 Protein backbone [i](#)

In the following table, the Percentiles column shows the percent Ramachandran outliers of the chain as a percentile score with respect to all X-ray entries followed by that with respect to entries of similar resolution.

The Analysed column shows the number of residues for which the backbone conformation was analysed, and the total number of residues.

Mol	Chain	Analysed	Favoured	Allowed	Outliers	Percentiles	
1	A	259/291 (89%)	249 (96%)	9 (4%)	1 (0%)	36	39
1	B	257/291 (88%)	248 (96%)	8 (3%)	1 (0%)	36	39

*Continued on next page...*

*Continued from previous page...*

Mol	Chain	Analysed	Favoured	Allowed	Outliers	Percentiles	
1	D	257/291 (88%)	247 (96%)	9 (4%)	1 (0%)	36	39
All	All	773/873 (88%)	744 (96%)	26 (3%)	3 (0%)	36	39

All (3) Ramachandran outliers are listed below:

Mol	Chain	Res	Type
1	A	276	GLY
1	D	209	ASP
1	B	108	MET

### 5.3.2 Protein sidechains [i](#)

In the following table, the Percentiles column shows the percent sidechain outliers of the chain as a percentile score with respect to all X-ray entries followed by that with respect to entries of similar resolution.

The Analysed column shows the number of residues for which the sidechain conformation was analysed, and the total number of residues.

Mol	Chain	Analysed	Rotameric	Outliers	Percentiles	
1	A	208/233 (89%)	194 (93%)	14 (7%)	18	20
1	B	207/233 (89%)	193 (93%)	14 (7%)	17	19
1	D	207/233 (89%)	198 (96%)	9 (4%)	32	39
All	All	622/699 (89%)	585 (94%)	37 (6%)	21	25

5 of 37 residues with a non-rotameric sidechain are listed below:

Mol	Chain	Res	Type
1	B	38	LEU
1	B	136	LEU
1	D	172	SER
1	B	66	LEU
1	B	108	MET

Some sidechains can be flipped to improve hydrogen bonding and reduce clashes. 5 of 6 such sidechains are listed below:

Mol	Chain	Res	Type
1	B	265	ASN
1	D	145	ASN

*Continued on next page...*

*Continued from previous page...*

Mol	Chain	Res	Type
1	D	41	ASN
1	B	41	ASN
1	D	100	HIS

### 5.3.3 RNA [i](#)

There are no RNA molecules in this entry.

## 5.4 Non-standard residues in protein, DNA, RNA chains [i](#)

There are no non-standard protein/DNA/RNA residues in this entry.

## 5.5 Carbohydrates [i](#)

There are no carbohydrates in this entry.

## 5.6 Ligand geometry [i](#)

Of 11 ligands modelled in this entry, 6 are monoatomic - leaving 5 for Mogul analysis.

In the following table, the Counts columns list the number of bonds (or angles) for which Mogul statistics could be retrieved, the number of bonds (or angles) that are observed in the model and the number of bonds (or angles) that are defined in the Chemical Component Dictionary. The Link column lists molecule types, if any, to which the group is linked. The Z score for a bond length (or angle) is the number of standard deviations the observed value is removed from the expected value. A bond length (or angle) with  $|Z| > 2$  is considered an outlier worth inspection. RMSZ is the root-mean-square of all Z scores of the bond lengths (or angles).

Mol	Type	Chain	Res	Link	Bond lengths			Bond angles		
					Counts	RMSZ	$\# Z  > 2$	Counts	RMSZ	$\# Z  > 2$
2	RET	A	292	1	20,20,21	2.29	7 (35%)	27,27,28	1.66	8 (29%)
3	22B	A	300	-	25,26,53	3.56	10 (40%)	29,35,72	2.35	10 (34%)
2	RET	B	292	1	20,20,21	2.29	5 (25%)	27,27,28	1.55	6 (22%)
3	22B	B	300	-	25,26,53	3.66	10 (40%)	29,35,72	2.47	10 (34%)
2	RET	D	292	1	20,20,21	2.08	5 (25%)	27,27,28	1.72	8 (29%)

In the following table, the Chirals column lists the number of chiral outliers, the number of chiral centers analysed, the number of these observed in the model and the number defined in the Chemical Component Dictionary. Similar counts are reported in the Torsion and Rings columns. '-' means no outliers of that kind were identified.

Mol	Type	Chain	Res	Link	Chirals	Torsions	Rings
2	RET	A	292	1	-	0/13/30/31	0/1/1/1
3	22B	A	300	-	-	0/31/31/65	0/0/0/0
2	RET	B	292	1	-	0/13/30/31	0/1/1/1
3	22B	B	300	-	-	0/31/31/65	0/0/0/0
2	RET	D	292	1	-	0/13/30/31	0/1/1/1

The worst 5 of 37 bond length outliers are listed below:

Mol	Chain	Res	Type	Atoms	Z	Observed(Å)	Ideal(Å)
2	A	292	RET	C2-C3	-2.55	1.46	1.52
2	B	292	RET	C2-C3	-2.48	1.46	1.52
2	D	292	RET	C2-C3	-2.42	1.46	1.52
2	A	292	RET	C10-C9	2.20	1.38	1.35
3	A	300	22B	C4-C3	2.28	1.37	1.32

The worst 5 of 42 bond angle outliers are listed below:

Mol	Chain	Res	Type	Atoms	Z	Observed(°)	Ideal(°)
3	B	300	22B	C17-C1-C16	-3.71	105.07	110.53
3	A	300	22B	C17-C1-C16	-3.53	105.34	110.53
3	B	300	22B	C4-C5-C6	-3.51	113.55	118.94
3	A	300	22B	C4-C5-C6	-3.48	113.60	118.94
2	D	292	RET	C1-C6-C5	-2.93	118.48	122.59

There are no chirality outliers.

There are no torsion outliers.

There are no ring outliers.

5 monomers are involved in 7 short contacts:

Mol	Chain	Res	Type	Clashes	Symm-Clashes
2	A	292	RET	1	0
3	A	300	22B	2	0
2	B	292	RET	1	0
3	B	300	22B	1	0
2	D	292	RET	2	0

## 5.7 Other polymers [i](#)

There are no such residues in this entry.

## 5.8 Polymer linkage issues ⓘ

There are no chain breaks in this entry.

## 6 Fit of model and data [i](#)

### 6.1 Protein, DNA and RNA chains [i](#)

In the following table, the column labelled ‘#RSRZ > 2’ contains the number (and percentage) of RSRZ outliers, followed by percent RSRZ outliers for the chain as percentile scores relative to all X-ray entries and entries of similar resolution. The OWAB column contains the minimum, median, 95<sup>th</sup> percentile and maximum values of the occupancy-weighted average B-factor per residue. The column labelled ‘Q < 0.9’ lists the number of (and percentage) of residues with an average occupancy less than 0.9.

Mol	Chain	Analysed	<RSRZ>	#RSRZ>2	OWAB(Å <sup>2</sup> )	Q<0.9
1	A	261/291 (89%)	0.07	15 (5%) 24 22	20, 33, 59, 79	0
1	B	259/291 (89%)	0.04	8 (3%) 49 46	25, 38, 52, 66	0
1	D	259/291 (89%)	0.74	31 (11%) 4 3	32, 50, 71, 92	0
All	All	779/873 (89%)	0.28	54 (6%) 17 15	20, 40, 65, 92	0

The worst 5 of 54 RSRZ outliers are listed below:

Mol	Chain	Res	Type	RSRZ
1	D	276	GLY	7.0
1	B	276	GLY	6.9
1	A	17	ALA	6.5
1	D	111	GLY	6.4
1	D	109	LEU	5.8

### 6.2 Non-standard residues in protein, DNA, RNA chains [i](#)

There are no non-standard protein/DNA/RNA residues in this entry.

### 6.3 Carbohydrates [i](#)

There are no carbohydrates in this entry.

### 6.4 Ligands [i](#)

In the following table, the Atoms column lists the number of modelled atoms in the group and the number defined in the chemical component dictionary. The B-factors column lists the minimum, median, 95<sup>th</sup> percentile and maximum values of B factors of atoms in the group. The column labelled ‘Q < 0.9’ lists the number of atoms with occupancy less than 0.9.

Mol	Type	Chain	Res	Atoms	RSCC	RSR	B-factors( $\text{\AA}^2$ )	Q<0.9
3	22B	A	300	27/54	0.61	0.32	72,77,85,86	0
3	22B	B	300	27/54	0.79	0.21	43,52,60,61	0
2	RET	D	292	20/21	0.84	0.19	40,42,44,46	0
4	BR	A	293	1/1	0.95	0.08	58,58,58,58	0
2	RET	B	292	20/21	0.96	0.11	25,28,30,30	0
2	RET	A	292	20/21	0.96	0.14	19,23,27,28	0
4	BR	D	401	1/1	0.98	0.10	50,50,50,50	0
4	BR	D	402	1/1	0.98	0.04	58,58,58,58	0
4	BR	A	402	1/1	0.99	0.07	43,43,43,43	0
4	BR	A	401	1/1	1.00	0.10	28,28,28,28	0
4	BR	B	401	1/1	1.00	0.12	32,32,32,32	0

## 6.5 Other polymers [i](#)

There are no such residues in this entry.