



# wwPDB X-ray Structure Validation Summary Report ⓘ

Mar 13, 2018 – 04:46 pm GMT

PDB ID : 4QB9  
Title : Crystal structure of Mycobacterium smegmatis Eis in complex with paromomycin  
Authors : Kim, K.H.; Ahn, D.R.; Yoon, H.J.; Yang, J.K.; Suh, S.W.  
Deposited on : 2014-05-06  
Resolution : 3.29 Å(reported)

This is a wwPDB X-ray Structure Validation Summary Report for a publicly released PDB entry.

We welcome your comments at [validation@mail.wwpdb.org](mailto:validation@mail.wwpdb.org)

A user guide is available at

<https://www.wwpdb.org/validation/2017/XrayValidationReportHelp>

with specific help available everywhere you see the ⓘ symbol.

---

The following versions of software and data (see [references ⓘ](#)) were used in the production of this report:

MolProbity : 4.02b-467  
Mogul : 1.7.3 (157068), CSD as539be (2018)  
Xtriage (Phenix) : 1.13  
EDS : trunk31020  
Percentile statistics : 20171227.v01 (using entries in the PDB archive December 27th 2017)  
Refmac : 5.8.0158  
CCP4 : 7.0 (Gargrove)  
Ideal geometry (proteins) : Engh & Huber (2001)  
Ideal geometry (DNA, RNA) : Parkinson et al. (1996)  
Validation Pipeline (wwPDB-VP) : trunk31020

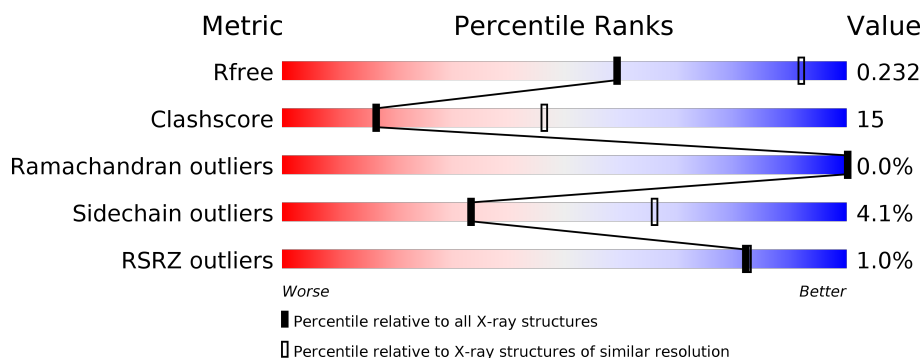
# 1 Overall quality at a glance

The following experimental techniques were used to determine the structure:

*X-RAY DIFFRACTION*

The reported resolution of this entry is 3.29 Å.

Percentile scores (ranging between 0-100) for global validation metrics of the entry are shown in the following graphic. The table shows the number of entries on which the scores are based.



Metric	Whole archive (#Entries)	Similar resolution (#Entries, resolution range(Å))
$R_{free}$	111664	1168 (3.36-3.24)
Clashscore	122126	1022 (3.34-3.26)
Ramachandran outliers	120053	1004 (3.34-3.26)
Sidechain outliers	120020	1003 (3.34-3.26)
RSRZ outliers	108989	1133 (3.36-3.24)

The table below summarises the geometric issues observed across the polymeric chains and their fit to the electron density. The red, orange, yellow and green segments on the lower bar indicate the fraction of residues that contain outliers for  $\geq 3$ , 2, 1 and 0 types of geometric quality criteria. A grey segment represents the fraction of residues that are not modelled. The numeric value for each fraction is indicated below the corresponding segment, with a dot representing fractions  $\leq 5\%$ . The upper red bar (where present) indicates the fraction of residues that have poor fit to the electron density. The numeric value is given above the bar.

Mol	Chain	Length	Quality of chain
1	A	422	<div> <div>68%</div> <div>25%</div> <div>• 5%</div> </div>
1	B	422	<div> <div>%</div> <div>70%</div> <div>24%</div> <div>• 5%</div> </div>
1	C	422	<div> <div>64%</div> <div>30%</div> <div>• 5%</div> </div>
1	D	422	<div> <div>%</div> <div>64%</div> <div>31%</div> <div>5%</div> </div>
1	E	422	<div> <div>%</div> <div>66%</div> <div>26%</div> <div>• • 5%</div> </div>
1	F	422	<div> <div>2%</div> <div>61%</div> <div>32%</div> <div>• 5%</div> </div>

## 2 Entry composition

There are 3 unique types of molecules in this entry. The entry contains 18910 atoms, of which 0 are hydrogens and 0 are deuteriums.

In the tables below, the ZeroOcc column contains the number of atoms modelled with zero occupancy, the AltConf column contains the number of residues with at least one atom in alternate conformation and the Trace column contains the number of residues modelled with at most 2 atoms.

- Molecule 1 is a protein called Enhanced intracellular survival protein.

Mol	Chain	Residues	Atoms					ZeroOcc	AltConf	Trace
1	A	402	Total	C	N	O	S	0	1	0
			3107	1951	570	578	8			
1	B	402	Total	C	N	O	S	0	0	0
			3100	1946	568	578	8			
1	C	402	Total	C	N	O	S	0	1	0
			3107	1951	570	578	8			
1	D	402	Total	C	N	O	S	0	0	0
			3100	1946	568	578	8			
1	E	402	Total	C	N	O	S	0	1	0
			3107	1951	570	578	8			
1	F	402	Total	C	N	O	S	0	1	0
			3107	1951	570	578	8			

There are 120 discrepancies between the modelled and reference sequences:

Chain	Residue	Modelled	Actual	Comment	Reference
A	-19	MET	-	EXPRESSION TAG	UNP A0QY29
A	-18	GLY	-	EXPRESSION TAG	UNP A0QY29
A	-17	SER	-	EXPRESSION TAG	UNP A0QY29
A	-16	SER	-	EXPRESSION TAG	UNP A0QY29
A	-15	HIS	-	EXPRESSION TAG	UNP A0QY29
A	-14	HIS	-	EXPRESSION TAG	UNP A0QY29
A	-13	HIS	-	EXPRESSION TAG	UNP A0QY29
A	-12	HIS	-	EXPRESSION TAG	UNP A0QY29
A	-11	HIS	-	EXPRESSION TAG	UNP A0QY29
A	-10	HIS	-	EXPRESSION TAG	UNP A0QY29
A	-9	SER	-	EXPRESSION TAG	UNP A0QY29
A	-8	SER	-	EXPRESSION TAG	UNP A0QY29
A	-7	GLY	-	EXPRESSION TAG	UNP A0QY29
A	-6	LEU	-	EXPRESSION TAG	UNP A0QY29
A	-5	VAL	-	EXPRESSION TAG	UNP A0QY29
A	-4	PRO	-	EXPRESSION TAG	UNP A0QY29
A	-3	ARG	-	EXPRESSION TAG	UNP A0QY29

*Continued on next page...*

*Continued from previous page...*

Chain	Residue	Modelled	Actual	Comment	Reference
A	-2	GLY	-	EXPRESSION TAG	UNP A0QY29
A	-1	SER	-	EXPRESSION TAG	UNP A0QY29
A	0	HIS	-	EXPRESSION TAG	UNP A0QY29
B	-19	MET	-	EXPRESSION TAG	UNP A0QY29
B	-18	GLY	-	EXPRESSION TAG	UNP A0QY29
B	-17	SER	-	EXPRESSION TAG	UNP A0QY29
B	-16	SER	-	EXPRESSION TAG	UNP A0QY29
B	-15	HIS	-	EXPRESSION TAG	UNP A0QY29
B	-14	HIS	-	EXPRESSION TAG	UNP A0QY29
B	-13	HIS	-	EXPRESSION TAG	UNP A0QY29
B	-12	HIS	-	EXPRESSION TAG	UNP A0QY29
B	-11	HIS	-	EXPRESSION TAG	UNP A0QY29
B	-10	HIS	-	EXPRESSION TAG	UNP A0QY29
B	-9	SER	-	EXPRESSION TAG	UNP A0QY29
B	-8	SER	-	EXPRESSION TAG	UNP A0QY29
B	-7	GLY	-	EXPRESSION TAG	UNP A0QY29
B	-6	LEU	-	EXPRESSION TAG	UNP A0QY29
B	-5	VAL	-	EXPRESSION TAG	UNP A0QY29
B	-4	PRO	-	EXPRESSION TAG	UNP A0QY29
B	-3	ARG	-	EXPRESSION TAG	UNP A0QY29
B	-2	GLY	-	EXPRESSION TAG	UNP A0QY29
B	-1	SER	-	EXPRESSION TAG	UNP A0QY29
B	0	HIS	-	EXPRESSION TAG	UNP A0QY29
C	-19	MET	-	EXPRESSION TAG	UNP A0QY29
C	-18	GLY	-	EXPRESSION TAG	UNP A0QY29
C	-17	SER	-	EXPRESSION TAG	UNP A0QY29
C	-16	SER	-	EXPRESSION TAG	UNP A0QY29
C	-15	HIS	-	EXPRESSION TAG	UNP A0QY29
C	-14	HIS	-	EXPRESSION TAG	UNP A0QY29
C	-13	HIS	-	EXPRESSION TAG	UNP A0QY29
C	-12	HIS	-	EXPRESSION TAG	UNP A0QY29
C	-11	HIS	-	EXPRESSION TAG	UNP A0QY29
C	-10	HIS	-	EXPRESSION TAG	UNP A0QY29
C	-9	SER	-	EXPRESSION TAG	UNP A0QY29
C	-8	SER	-	EXPRESSION TAG	UNP A0QY29
C	-7	GLY	-	EXPRESSION TAG	UNP A0QY29
C	-6	LEU	-	EXPRESSION TAG	UNP A0QY29
C	-5	VAL	-	EXPRESSION TAG	UNP A0QY29
C	-4	PRO	-	EXPRESSION TAG	UNP A0QY29
C	-3	ARG	-	EXPRESSION TAG	UNP A0QY29
C	-2	GLY	-	EXPRESSION TAG	UNP A0QY29
C	-1	SER	-	EXPRESSION TAG	UNP A0QY29

*Continued on next page...*

*Continued from previous page...*

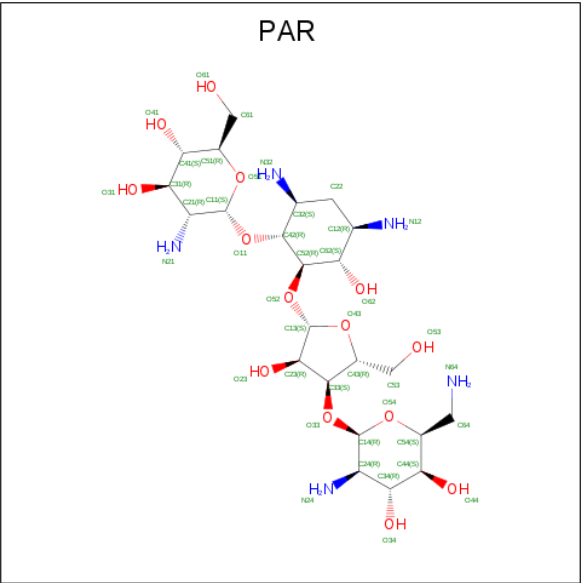
Chain	Residue	Modelled	Actual	Comment	Reference
C	0	HIS	-	EXPRESSION TAG	UNP A0QY29
D	-19	MET	-	EXPRESSION TAG	UNP A0QY29
D	-18	GLY	-	EXPRESSION TAG	UNP A0QY29
D	-17	SER	-	EXPRESSION TAG	UNP A0QY29
D	-16	SER	-	EXPRESSION TAG	UNP A0QY29
D	-15	HIS	-	EXPRESSION TAG	UNP A0QY29
D	-14	HIS	-	EXPRESSION TAG	UNP A0QY29
D	-13	HIS	-	EXPRESSION TAG	UNP A0QY29
D	-12	HIS	-	EXPRESSION TAG	UNP A0QY29
D	-11	HIS	-	EXPRESSION TAG	UNP A0QY29
D	-10	HIS	-	EXPRESSION TAG	UNP A0QY29
D	-9	SER	-	EXPRESSION TAG	UNP A0QY29
D	-8	SER	-	EXPRESSION TAG	UNP A0QY29
D	-7	GLY	-	EXPRESSION TAG	UNP A0QY29
D	-6	LEU	-	EXPRESSION TAG	UNP A0QY29
D	-5	VAL	-	EXPRESSION TAG	UNP A0QY29
D	-4	PRO	-	EXPRESSION TAG	UNP A0QY29
D	-3	ARG	-	EXPRESSION TAG	UNP A0QY29
D	-2	GLY	-	EXPRESSION TAG	UNP A0QY29
D	-1	SER	-	EXPRESSION TAG	UNP A0QY29
D	0	HIS	-	EXPRESSION TAG	UNP A0QY29
E	-19	MET	-	EXPRESSION TAG	UNP A0QY29
E	-18	GLY	-	EXPRESSION TAG	UNP A0QY29
E	-17	SER	-	EXPRESSION TAG	UNP A0QY29
E	-16	SER	-	EXPRESSION TAG	UNP A0QY29
E	-15	HIS	-	EXPRESSION TAG	UNP A0QY29
E	-14	HIS	-	EXPRESSION TAG	UNP A0QY29
E	-13	HIS	-	EXPRESSION TAG	UNP A0QY29
E	-12	HIS	-	EXPRESSION TAG	UNP A0QY29
E	-11	HIS	-	EXPRESSION TAG	UNP A0QY29
E	-10	HIS	-	EXPRESSION TAG	UNP A0QY29
E	-9	SER	-	EXPRESSION TAG	UNP A0QY29
E	-8	SER	-	EXPRESSION TAG	UNP A0QY29
E	-7	GLY	-	EXPRESSION TAG	UNP A0QY29
E	-6	LEU	-	EXPRESSION TAG	UNP A0QY29
E	-5	VAL	-	EXPRESSION TAG	UNP A0QY29
E	-4	PRO	-	EXPRESSION TAG	UNP A0QY29
E	-3	ARG	-	EXPRESSION TAG	UNP A0QY29
E	-2	GLY	-	EXPRESSION TAG	UNP A0QY29
E	-1	SER	-	EXPRESSION TAG	UNP A0QY29
E	0	HIS	-	EXPRESSION TAG	UNP A0QY29
F	-19	MET	-	EXPRESSION TAG	UNP A0QY29

*Continued on next page...*

Continued from previous page...

Chain	Residue	Modelled	Actual	Comment	Reference
F	-18	GLY	-	EXPRESSION TAG	UNP A0QY29
F	-17	SER	-	EXPRESSION TAG	UNP A0QY29
F	-16	SER	-	EXPRESSION TAG	UNP A0QY29
F	-15	HIS	-	EXPRESSION TAG	UNP A0QY29
F	-14	HIS	-	EXPRESSION TAG	UNP A0QY29
F	-13	HIS	-	EXPRESSION TAG	UNP A0QY29
F	-12	HIS	-	EXPRESSION TAG	UNP A0QY29
F	-11	HIS	-	EXPRESSION TAG	UNP A0QY29
F	-10	HIS	-	EXPRESSION TAG	UNP A0QY29
F	-9	SER	-	EXPRESSION TAG	UNP A0QY29
F	-8	SER	-	EXPRESSION TAG	UNP A0QY29
F	-7	GLY	-	EXPRESSION TAG	UNP A0QY29
F	-6	LEU	-	EXPRESSION TAG	UNP A0QY29
F	-5	VAL	-	EXPRESSION TAG	UNP A0QY29
F	-4	PRO	-	EXPRESSION TAG	UNP A0QY29
F	-3	ARG	-	EXPRESSION TAG	UNP A0QY29
F	-2	GLY	-	EXPRESSION TAG	UNP A0QY29
F	-1	SER	-	EXPRESSION TAG	UNP A0QY29
F	0	HIS	-	EXPRESSION TAG	UNP A0QY29

- Molecule 2 is PAROMOMYCIN (three-letter code: PAR) (formula: C<sub>23</sub>H<sub>45</sub>N<sub>5</sub>O<sub>14</sub>).



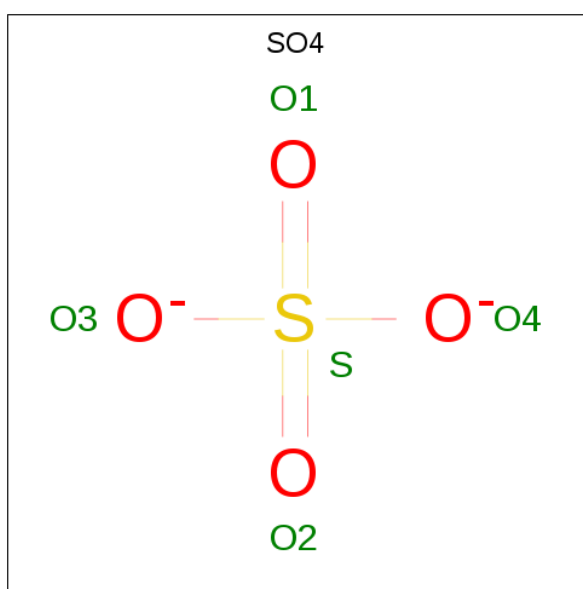
Mol	Chain	Residues	Atoms				ZeroOcc	AltConf
2	A	1	Total	C	N	O	0	0
			42	23	5	14		
2	B	1	Total	C	N	O	0	0
			42	23	5	14		

Continued on next page...

Continued from previous page...

Mol	Chain	Residues	Atoms				ZeroOcc	AltConf
2	C	1	Total	C	N	O	0	0
			42	23	5	14		
2	D	1	Total	C	N	O	0	0
			42	23	5	14		
2	E	1	Total	C	N	O	0	0
			42	23	5	14		
2	F	1	Total	C	N	O	0	0
			42	23	5	14		

- Molecule 3 is SULFATE ION (three-letter code: SO4) (formula: O<sub>4</sub>S).

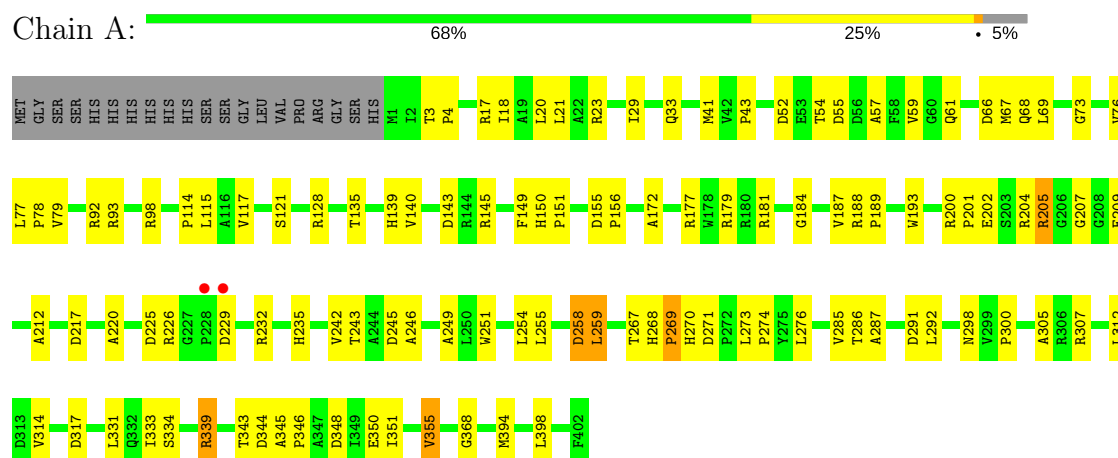


Mol	Chain	Residues	Atoms			ZeroOcc	AltConf
3	A	1	Total	O	S	0	0
			5	4	1		
3	B	1	Total	O	S	0	0
			5	4	1		
3	C	1	Total	O	S	0	0
			5	4	1		
3	D	1	Total	O	S	0	0
			5	4	1		
3	E	1	Total	O	S	0	0
			5	4	1		
3	F	1	Total	O	S	0	0
			5	4	1		

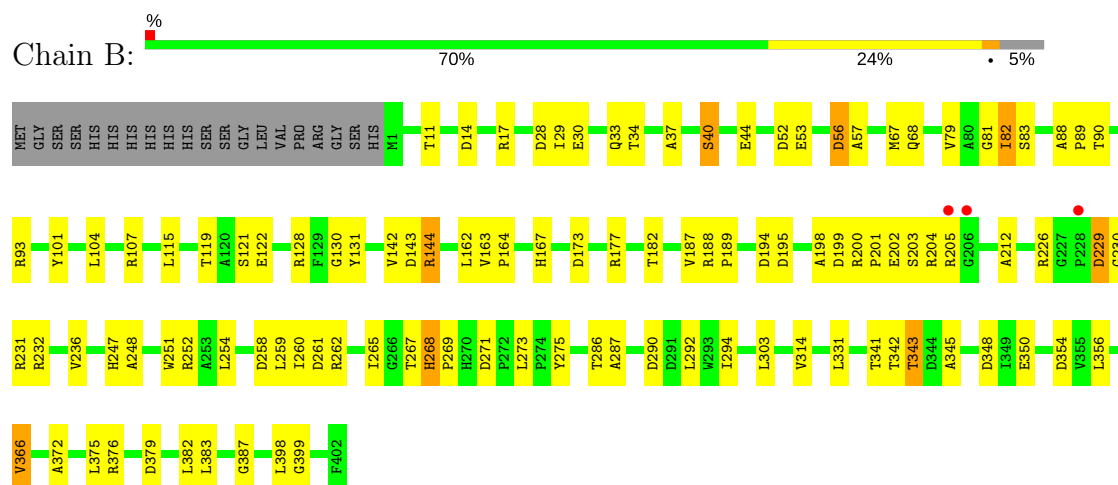
### 3 Residue-property plots

These plots are drawn for all protein, RNA and DNA chains in the entry. The first graphic for a chain summarises the proportions of the various outlier classes displayed in the second graphic. The second graphic shows the sequence view annotated by issues in geometry and electron density. Residues are color-coded according to the number of geometric quality criteria for which they contain at least one outlier: green = 0, yellow = 1, orange = 2 and red = 3 or more. A red dot above a residue indicates a poor fit to the electron density ( $RSRZ > 2$ ). Stretches of 2 or more consecutive residues without any outlier are shown as a green connector. Residues present in the sample, but not in the model, are shown in grey.

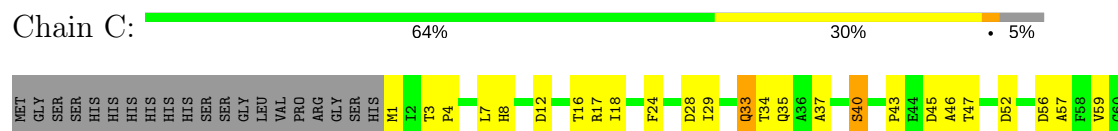
#### • Molecule 1: Enhanced intracellular survival protein



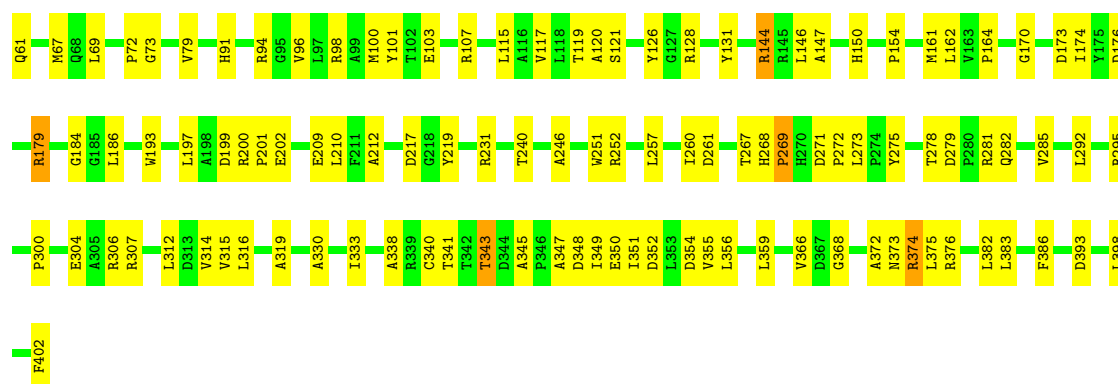
#### • Molecule 1: Enhanced intracellular survival protein



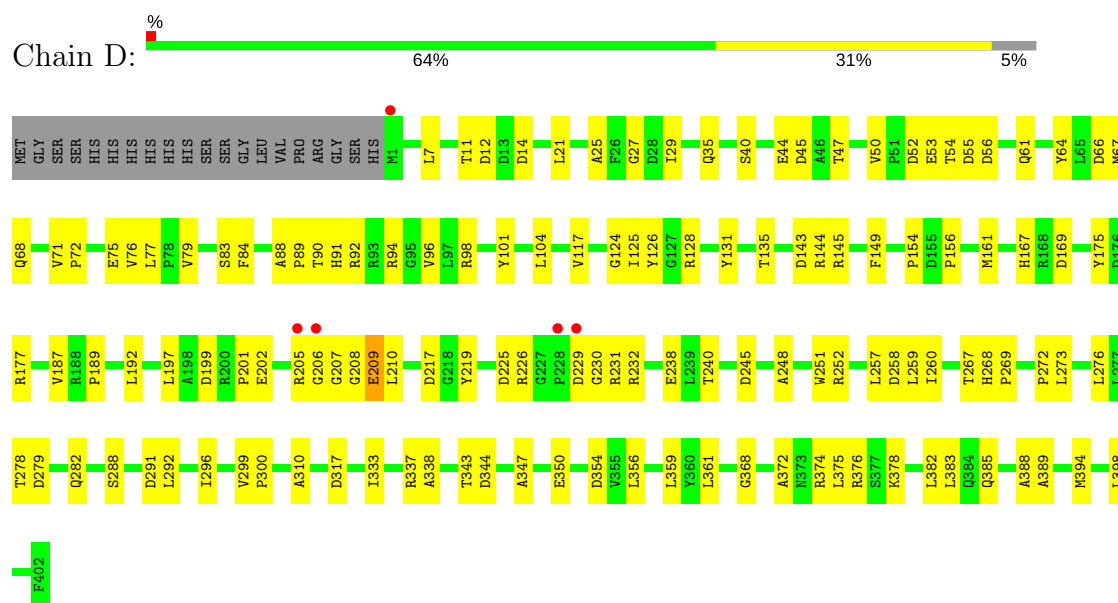
#### • Molecule 1: Enhanced intracellular survival protein



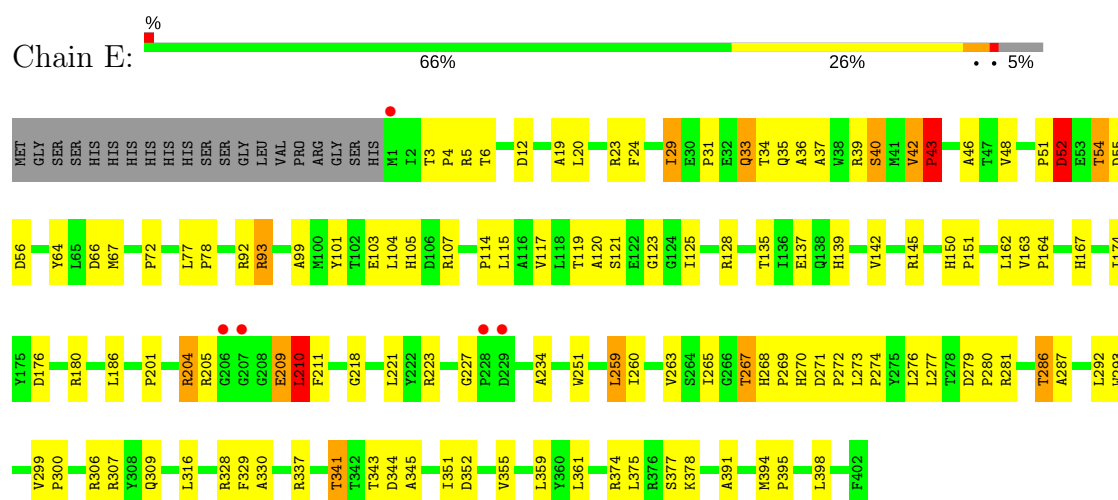




• Molecule 1: Enhanced intracellular survival protein

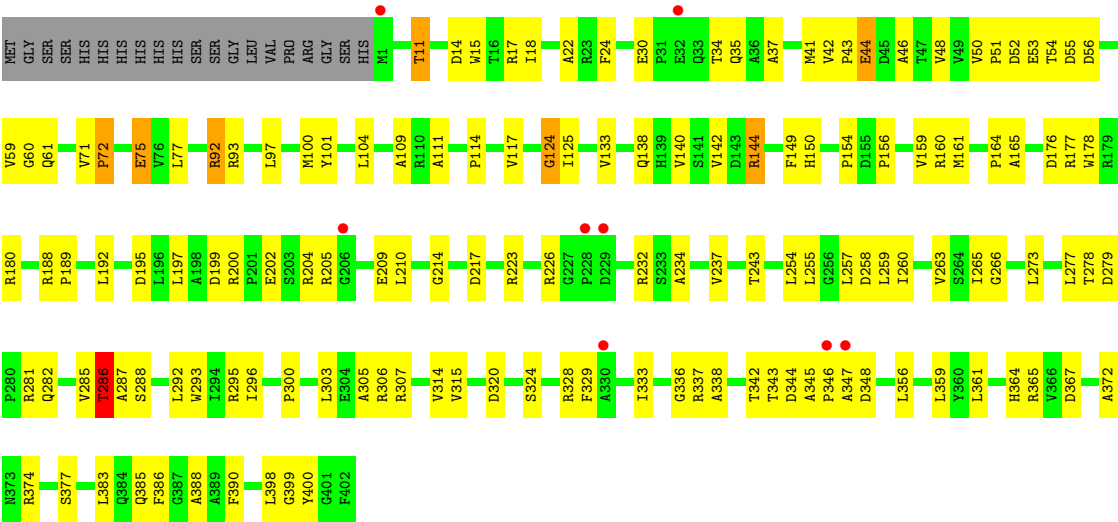


• Molecule 1: Enhanced intracellular survival protein



• Molecule 1: Enhanced intracellular survival protein





## 4 Data and refinement statistics

Property	Value	Source
Space group	P 21 21 21	Depositor
Cell constants a, b, c, $\alpha$ , $\beta$ , $\gamma$	107.27Å 126.54Å 236.64Å 90.00° 90.00° 90.00°	Depositor
Resolution (Å)	14.99 – 3.29 38.67 – 3.29	Depositor EDS
% Data completeness (in resolution range)	95.9 (14.99-3.29) 92.6 (38.67-3.29)	Depositor EDS
$R_{merge}$	(Not available)	Depositor
$R_{sym}$	(Not available)	Depositor
$\langle I/\sigma(I) \rangle$ <sup>1</sup>	7.16 (at 3.32Å)	Xtriage
Refinement program	PHENIX 1.8.4_1496	Depositor
R, $R_{free}$	0.151 , 0.234 0.161 , 0.232	Depositor DCC
$R_{free}$ test set	2413 reflections (5.08%)	wwPDB-VP
Wilson B-factor (Å <sup>2</sup> )	56.4	Xtriage
Anisotropy	0.404	Xtriage
Bulk solvent $k_{sol}$ (e/Å <sup>3</sup> ), $B_{sol}$ (Å <sup>2</sup> )	0.30 , 32.6	EDS
L-test for twinning <sup>2</sup>	$\langle  L  \rangle = 0.48$ , $\langle L^2 \rangle = 0.31$	Xtriage
Estimated twinning fraction	No twinning to report.	Xtriage
$F_o, F_c$ correlation	0.93	EDS
Total number of atoms	18910	wwPDB-VP
Average B, all atoms (Å <sup>2</sup> )	48.0	wwPDB-VP

Xtriage's analysis on translational NCS is as follows: *The largest off-origin peak in the Patterson function is 2.07% of the height of the origin peak. No significant pseudotranslation is detected.*

<sup>1</sup>Intensities estimated from amplitudes.

<sup>2</sup>Theoretical values of  $\langle |L| \rangle$ ,  $\langle L^2 \rangle$  for acentric reflections are 0.5, 0.333 respectively for untwinned datasets, and 0.375, 0.2 for perfectly twinned datasets.

## 5 Model quality

### 5.1 Standard geometry

Bond lengths and bond angles in the following residue types are not validated in this section: PAR, SO4

The Z score for a bond length (or angle) is the number of standard deviations the observed value is removed from the expected value. A bond length (or angle) with  $|Z| > 5$  is considered an outlier worth inspection. RMSZ is the root-mean-square of all Z scores of the bond lengths (or angles).

Mol	Chain	Bond lengths		Bond angles	
		RMSZ	$\# Z  > 5$	RMSZ	$\# Z  > 5$
1	A	0.69	0/3183	0.80	0/4336
1	B	0.72	0/3172	0.82	1/4321 (0.0%)
1	C	0.72	0/3183	0.79	0/4336
1	D	0.66	0/3172	0.79	1/4321 (0.0%)
1	E	0.64	0/3183	0.84	6/4336 (0.1%)
1	F	0.64	0/3183	0.79	4/4336 (0.1%)
All	All	0.68	0/19076	0.81	12/25986 (0.0%)

Chiral center outliers are detected by calculating the chiral volume of a chiral center and verifying if the center is modelled as a planar moiety or with the opposite hand. A planarity outlier is detected by checking planarity of atoms in a peptide group, atoms in a mainchain group or atoms of a sidechain that are expected to be planar.

Mol	Chain	#Chirality outliers	#Planarity outliers
1	B	0	2
1	E	0	1
All	All	0	3

There are no bond length outliers.

The worst 5 of 12 bond angle outliers are listed below:

Mol	Chain	Res	Type	Atoms	Z	Observed(°)	Ideal(°)
1	E	227	GLY	C-N-CD	-10.12	98.35	120.60
1	E	210	LEU	CA-CB-CG	8.99	135.97	115.30
1	F	286	THR	CB-CA-C	-8.32	89.13	111.60
1	F	124	GLY	N-CA-C	-6.23	97.52	113.10
1	D	209	GLU	N-CA-C	-6.12	94.49	111.00

There are no chirality outliers.

All (3) planarity outliers are listed below:

Mol	Chain	Res	Type	Group
1	B	144	ARG	Sidechain
1	B	28	ASP	Peptide
1	E	204	ARG	Peptide

## 5.2 Too-close contacts

In the following table, the Non-H and H(model) columns list the number of non-hydrogen atoms and hydrogen atoms in the chain respectively. The H(added) column lists the number of hydrogen atoms added and optimized by MolProbity. The Clashes column lists the number of clashes within the asymmetric unit, whereas Symm-Clashes lists symmetry related clashes.

Mol	Chain	Non-H	H(model)	H(added)	Clashes	Symm-Clashes
1	A	3107	0	3027	97	0
1	B	3100	0	3020	95	0
1	C	3107	0	3027	96	0
1	D	3100	0	3020	100	0
1	E	3107	0	3027	100	0
1	F	3107	0	3027	115	0
2	A	42	0	45	4	0
2	B	42	0	45	3	0
2	C	42	0	44	9	0
2	D	42	0	45	2	0
2	E	42	0	44	3	0
2	F	42	0	44	1	0
3	A	5	0	0	1	0
3	B	5	0	0	0	0
3	C	5	0	0	0	0
3	D	5	0	0	1	0
3	E	5	0	0	0	0
3	F	5	0	0	1	0
All	All	18910	0	18415	569	0

The all-atom clashscore is defined as the number of clashes found per 1000 atoms (including hydrogen atoms). The all-atom clashscore for this structure is 15.

The worst 5 of 569 close contacts within the same asymmetric unit are listed below, sorted by their clash magnitude.

Atom-1	Atom-2	Interatomic distance (Å)	Clash overlap (Å)
2:C:500:PAR:C12	2:C:500:PAR:N12	1.67	1.50
1:B:144:ARG:NH2	1:B:258:ASP:HA	1.56	1.21
1:B:201:PRO:HA	1:B:204:ARG:HD2	1.15	1.13

*Continued on next page...*

*Continued from previous page...*

Atom-1	Atom-2	Interatomic distance (Å)	Clash overlap (Å)
1:B:33:GLN:HG3	1:B:200:ARG:NH2	1.77	0.98
1:B:144:ARG:HH21	1:B:258:ASP:CA	1.74	0.98

There are no symmetry-related clashes.

## 5.3 Torsion angles [i](#)

### 5.3.1 Protein backbone [i](#)

In the following table, the Percentiles column shows the percent Ramachandran outliers of the chain as a percentile score with respect to all X-ray entries followed by that with respect to entries of similar resolution.

The Analysed column shows the number of residues for which the backbone conformation was analysed, and the total number of residues.

Mol	Chain	Analysed	Favoured	Allowed	Outliers	Percentiles	
1	A	401/422 (95%)	364 (91%)	37 (9%)	0	100	100
1	B	400/422 (95%)	361 (90%)	39 (10%)	0	100	100
1	C	401/422 (95%)	377 (94%)	24 (6%)	0	100	100
1	D	400/422 (95%)	360 (90%)	40 (10%)	0	100	100
1	E	401/422 (95%)	376 (94%)	24 (6%)	1 (0%)	49	80
1	F	401/422 (95%)	358 (89%)	43 (11%)	0	100	100
All	All	2404/2532 (95%)	2196 (91%)	207 (9%)	1 (0%)	100	100

All (1) Ramachandran outliers are listed below:

Mol	Chain	Res	Type
1	E	52	ASP

### 5.3.2 Protein sidechains [i](#)

In the following table, the Percentiles column shows the percent sidechain outliers of the chain as a percentile score with respect to all X-ray entries followed by that with respect to entries of similar resolution.

The Analysed column shows the number of residues for which the sidechain conformation was analysed, and the total number of residues.

Mol	Chain	Analysed	Rotameric	Outliers	Percentiles	
1	A	312/328 (95%)	302 (97%)	10 (3%)	42	72
1	B	311/328 (95%)	292 (94%)	19 (6%)	20	53
1	C	312/328 (95%)	300 (96%)	12 (4%)	36	67
1	D	311/328 (95%)	301 (97%)	10 (3%)	42	72
1	E	312/328 (95%)	297 (95%)	15 (5%)	28	62
1	F	312/328 (95%)	301 (96%)	11 (4%)	39	69
All	All	1870/1968 (95%)	1793 (96%)	77 (4%)	33	66

5 of 77 residues with a non-rotameric sidechain are listed below:

Mol	Chain	Res	Type
1	C	144	ARG
1	D	101	TYR
1	F	101	TYR
1	C	173	ASP
1	C	354	ASP

Some sidechains can be flipped to improve hydrogen bonding and reduce clashes. All (4) such sidechains are listed below:

Mol	Chain	Res	Type
1	B	247	HIS
1	C	268	HIS
1	E	270	HIS
1	F	282	GLN

### 5.3.3 RNA ⓘ

There are no RNA molecules in this entry.

## 5.4 Non-standard residues in protein, DNA, RNA chains ⓘ

There are no non-standard protein/DNA/RNA residues in this entry.

## 5.5 Carbohydrates ⓘ

There are no carbohydrates in this entry.

## 5.6 Ligand geometry

12 ligands are modelled in this entry.

In the following table, the Counts columns list the number of bonds (or angles) for which Mogul statistics could be retrieved, the number of bonds (or angles) that are observed in the model and the number of bonds (or angles) that are defined in the Chemical Component Dictionary. The Link column lists molecule types, if any, to which the group is linked. The Z score for a bond length (or angle) is the number of standard deviations the observed value is removed from the expected value. A bond length (or angle) with  $|Z| > 2$  is considered an outlier worth inspection. RMSZ is the root-mean-square of all Z scores of the bond lengths (or angles).

Mol	Type	Chain	Res	Link	Bond lengths			Bond angles		
					Counts	RMSZ	# Z  > 2	Counts	RMSZ	# Z  > 2
2	PAR	A	500	-	44,45,45	3.62	20 (45%)	62,67,67	2.14	19 (30%)
3	SO4	A	501	-	4,4,4	0.41	0	6,6,6	0.31	0
2	PAR	B	500	-	44,45,45	3.60	20 (45%)	62,67,67	2.41	25 (40%)
3	SO4	B	501	-	4,4,4	0.41	0	6,6,6	0.51	0
2	PAR	C	500	-	44,45,45	3.49	19 (43%)	62,67,67	2.09	20 (32%)
3	SO4	C	501	-	4,4,4	0.33	0	6,6,6	0.48	0
2	PAR	D	500	-	44,45,45	3.52	21 (47%)	62,67,67	2.10	19 (30%)
3	SO4	D	501	-	4,4,4	0.24	0	6,6,6	0.50	0
2	PAR	E	500	-	44,45,45	3.58	19 (43%)	62,67,67	1.97	11 (17%)
3	SO4	E	501	-	4,4,4	0.33	0	6,6,6	0.34	0
2	PAR	F	500	-	44,45,45	3.54	19 (43%)	62,67,67	2.19	21 (33%)
3	SO4	F	501	-	4,4,4	0.25	0	6,6,6	0.28	0

In the following table, the Chirals column lists the number of chiral outliers, the number of chiral centers analysed, the number of these observed in the model and the number defined in the Chemical Component Dictionary. Similar counts are reported in the Torsion and Rings columns. '-' means no outliers of that kind were identified.

Mol	Type	Chain	Res	Link	Chirals	Torsions	Rings
2	PAR	A	500	-	-	0/18/94/94	0/4/4/4
3	SO4	A	501	-	-	0/0/0/0	0/0/0/0
2	PAR	B	500	-	-	0/18/94/94	0/4/4/4
3	SO4	B	501	-	-	0/0/0/0	0/0/0/0
2	PAR	C	500	-	-	0/18/94/94	0/4/4/4
3	SO4	C	501	-	-	0/0/0/0	0/0/0/0
2	PAR	D	500	-	-	0/18/94/94	0/4/4/4
3	SO4	D	501	-	-	0/0/0/0	0/0/0/0
2	PAR	E	500	-	-	0/18/94/94	0/4/4/4
3	SO4	E	501	-	-	0/0/0/0	0/0/0/0
2	PAR	F	500	-	-	0/18/94/94	0/4/4/4

*Continued on next page...*



*Continued from previous page...*

Mol	Type	Chain	Res	Link	Chirals	Torsions	Rings
3	SO4	F	501	-	-	0/0/0/0	0/0/0/0

The worst 5 of 118 bond length outliers are listed below:

Mol	Chain	Res	Type	Atoms	Z	Observed(Å)	Ideal(Å)
2	B	500	PAR	C23-C33	-10.41	1.30	1.53
2	C	500	PAR	C23-C33	-9.64	1.31	1.53
2	A	500	PAR	C23-C33	-9.62	1.32	1.53
2	D	500	PAR	C23-C33	-9.21	1.32	1.53
2	E	500	PAR	C23-C33	-8.96	1.33	1.53

The worst 5 of 115 bond angle outliers are listed below:

Mol	Chain	Res	Type	Atoms	Z	Observed(°)	Ideal(°)
2	E	500	PAR	C52-C42-C32	-5.43	100.67	111.20
2	B	500	PAR	C52-C42-C32	-5.12	101.27	111.20
2	B	500	PAR	C14-O54-C54	-4.86	104.12	113.71
2	A	500	PAR	C14-O54-C54	-4.44	104.97	113.71
2	A	500	PAR	C52-C42-C32	-4.35	102.78	111.20

There are no chirality outliers.

There are no torsion outliers.

There are no ring outliers.

9 monomers are involved in 22 short contacts:

Mol	Chain	Res	Type	Clashes	Symm-Clashes
2	A	500	PAR	4	0
3	A	501	SO4	1	0
2	B	500	PAR	3	0
2	C	500	PAR	9	0
2	D	500	PAR	2	0
3	D	501	SO4	1	0
2	E	500	PAR	3	0
2	F	500	PAR	1	0
3	F	501	SO4	1	0

## 5.7 Other polymers [i](#)

There are no such residues in this entry.

## 5.8 Polymer linkage issues ⓘ

There are no chain breaks in this entry.

## 6 Fit of model and data [i](#)

### 6.1 Protein, DNA and RNA chains [i](#)

In the following table, the column labelled ‘#RSRZ> 2’ contains the number (and percentage) of RSRZ outliers, followed by percent RSRZ outliers for the chain as percentile scores relative to all X-ray entries and entries of similar resolution. The OWAB column contains the minimum, median, 95<sup>th</sup> percentile and maximum values of the occupancy-weighted average B-factor per residue. The column labelled ‘Q< 0.9’ lists the number of (and percentage) of residues with an average occupancy less than 0.9.

Mol	Chain	Analysed	<RSRZ>	#RSRZ>2	OWAB(Å <sup>2</sup> )	Q<0.9
1	A	402/422 (95%)	-0.36	2 (0%) 90 90	21, 38, 81, 106	0
1	B	402/422 (95%)	-0.34	3 (0%) 87 88	23, 39, 83, 114	0
1	C	402/422 (95%)	-0.37	0 100 100	21, 40, 75, 103	0
1	D	402/422 (95%)	-0.34	5 (1%) 79 78	24, 43, 80, 113	0
1	E	402/422 (95%)	-0.29	5 (1%) 79 78	31, 49, 89, 121	0
1	F	402/422 (95%)	-0.20	8 (1%) 65 64	29, 54, 87, 108	0
All	All	2412/2532 (95%)	-0.32	23 (0%) 82 82	21, 44, 85, 121	0

The worst 5 of 23 RSRZ outliers are listed below:

Mol	Chain	Res	Type	RSRZ
1	B	206	GLY	4.8
1	D	228	PRO	4.1
1	E	207	GLY	4.1
1	B	205	ARG	3.6
1	D	205	ARG	3.6

### 6.2 Non-standard residues in protein, DNA, RNA chains [i](#)

There are no non-standard protein/DNA/RNA residues in this entry.

### 6.3 Carbohydrates [i](#)

There are no carbohydrates in this entry.

## 6.4 Ligands [i](#)

In the following table, the Atoms column lists the number of modelled atoms in the group and the number defined in the chemical component dictionary. The B-factors column lists the minimum, median, 95<sup>th</sup> percentile and maximum values of B factors of atoms in the group. The column labelled 'Q< 0.9' lists the number of atoms with occupancy less than 0.9.

Mol	Type	Chain	Res	Atoms	RSCC	RSR	B-factors(Å <sup>2</sup> )	Q<0.9
3	SO4	A	501	5/5	0.91	0.21	64,65,67,94	0
3	SO4	F	501	5/5	0.91	0.22	76,77,82,100	0
2	PAR	F	500	42/42	0.92	0.19	51,65,76,79	0
3	SO4	C	501	5/5	0.93	0.17	68,76,82,104	0
3	SO4	D	501	5/5	0.93	0.25	69,83,88,106	0
3	SO4	E	501	5/5	0.93	0.20	73,82,85,105	0
2	PAR	A	500	42/42	0.94	0.21	30,45,55,62	0
2	PAR	C	500	42/42	0.94	0.15	38,52,62,64	0
2	PAR	E	500	42/42	0.94	0.19	46,56,65,70	0
2	PAR	D	500	42/42	0.95	0.16	40,53,62,67	0
3	SO4	B	501	5/5	0.95	0.15	68,69,78,110	0
2	PAR	B	500	42/42	0.95	0.18	28,40,51,54	0

## 6.5 Other polymers [i](#)

There are no such residues in this entry.