



wwPDB X-ray Structure Validation Summary Report ⓘ

Mar 8, 2018 – 08:46 pm GMT

PDB ID : 3QW0
Title : Crystal structure of the Zn-RIDC1 complex stabilized by BMB crosslinks
Authors : Salgado, E.N.; Tezcan, F.A.
Deposited on : 2011-02-26
Resolution : 1.84 Å(reported)

This is a wwPDB X-ray Structure Validation Summary Report for a publicly released PDB entry.

We welcome your comments at validation@mail.wwpdb.org

A user guide is available at

<https://www.wwpdb.org/validation/2017/XrayValidationReportHelp>

with specific help available everywhere you see the ⓘ symbol.

The following versions of software and data (see [references ⓘ](#)) were used in the production of this report:

MolProbity	:	4.02b-467
Mogul	:	1.7.3 (157068), CSD as539be (2018)
Xtriage (Phenix)	:	1.13
EDS	:	trunk30967
Percentile statistics	:	20171227.v01 (using entries in the PDB archive December 27th 2017)
Refmac	:	5.8.0158
CCP4	:	7.0 (Gargrove)
Ideal geometry (proteins)	:	Engh & Huber (2001)
Ideal geometry (DNA, RNA)	:	Parkinson et al. (1996)
Validation Pipeline (wwPDB-VP)	:	trunk30967

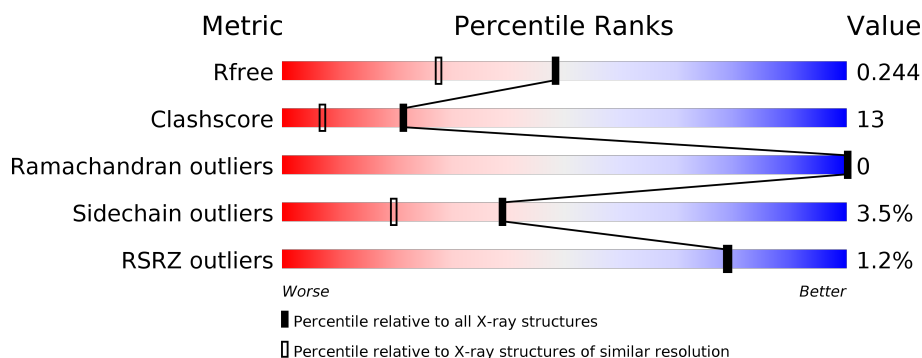
1 Overall quality at a glance

The following experimental techniques were used to determine the structure:

X-RAY DIFFRACTION

The reported resolution of this entry is 1.84 Å.

Percentile scores (ranging between 0-100) for global validation metrics of the entry are shown in the following graphic. The table shows the number of entries on which the scores are based.



Metric	Whole archive (#Entries)	Similar resolution (#Entries, resolution range(Å))
R_{free}	111664	3313 (1.86-1.82)
Clashscore	122126	3530 (1.86-1.82)
Ramachandran outliers	120053	3495 (1.86-1.82)
Sidechain outliers	120020	3496 (1.86-1.82)
RSRZ outliers	108989	3265 (1.86-1.82)

The table below summarises the geometric issues observed across the polymeric chains and their fit to the electron density. The red, orange, yellow and green segments on the lower bar indicate the fraction of residues that contain outliers for ≥ 3 , 2, 1 and 0 types of geometric quality criteria. A grey segment represents the fraction of residues that are not modelled. The numeric value for each fraction is indicated below the corresponding segment, with a dot representing fractions $\leq 5\%$. The upper red bar (where present) indicates the fraction of residues that have poor fit to the electron density. The numeric value is given above the bar.

Mol	Chain	Length	Quality of chain
1	A	106	<div> <div></div> <div>86%14%</div> </div>
1	B	106	<div> <div></div> <div>89%10%</div> </div>
1	C	106	<div> <div></div> <div>84%15%</div> </div>
1	D	106	<div> <div></div> <div>77%21%</div> </div>

The following table lists non-polymeric compounds, carbohydrate monomers and non-standard residues in protein, DNA, RNA chains that are outliers for geometric or electron-density-fit crite-

ria:

Mol	Type	Chain	Res	Chirality	Geometry	Clashes	Electron density
5	BTB	A	107	-	-	X	-

2 Entry composition [i](#)

There are 6 unique types of molecules in this entry. The entry contains 3966 atoms, of which 0 are hydrogens and 0 are deuteriums.

In the tables below, the ZeroOcc column contains the number of atoms modelled with zero occupancy, the AltConf column contains the number of residues with at least one atom in alternate conformation and the Trace column contains the number of residues modelled with at most 2 atoms.

- Molecule 1 is a protein called Cytochrome cb562.

Mol	Chain	Residues	Atoms					ZeroOcc	AltConf	Trace
1	A	106	Total	C	N	O	S	0	1	0
			825	510	145	164	6			
1	B	106	Total	C	N	O	S	0	2	0
			830	513	145	166	6			
1	C	106	Total	C	N	O	S	0	0	0
			821	507	145	163	6			
1	D	106	Total	C	N	O	S	0	1	0
			824	509	145	164	6			

- Molecule 2 is PROTOPORPHYRIN IX CONTAINING FE (three-letter code: HEM) (formula: $C_{34}H_{32}FeN_4O_4$).



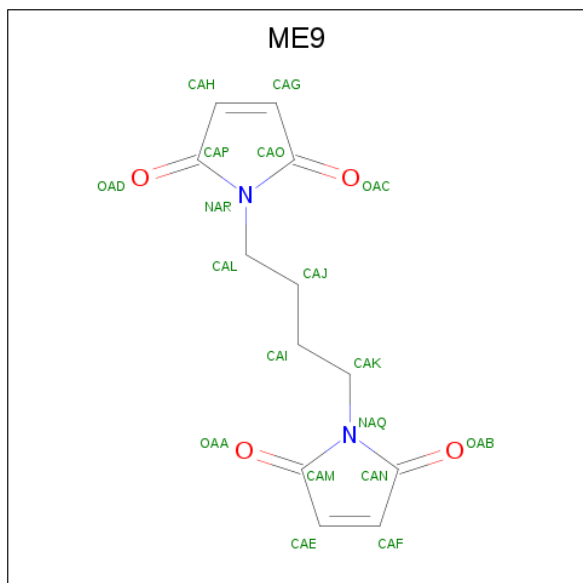
Mol	Chain	Residues	Atoms				ZeroOcc	AltConf
2	A	1	Total	C	Fe	N O	0	0
			43	34	1	4 4		
2	B	1	Total	C	Fe	N O	0	0
			43	34	1	4 4		

Continued on next page...

Continued from previous page...

Mol	Chain	Residues	Atoms					ZeroOcc	AltConf
2	C	1	Total	C	Fe	N	O	0	0
			43	34	1	4	4		
2	D	1	Total	C	Fe	N	O	0	0
			43	34	1	4	4		

- Molecule 3 is 1,1'-butane-1,4-diylbis(1H-pyrrole-2,5-dione) (three-letter code: ME9) (formula: C₁₂H₁₂N₂O₄).

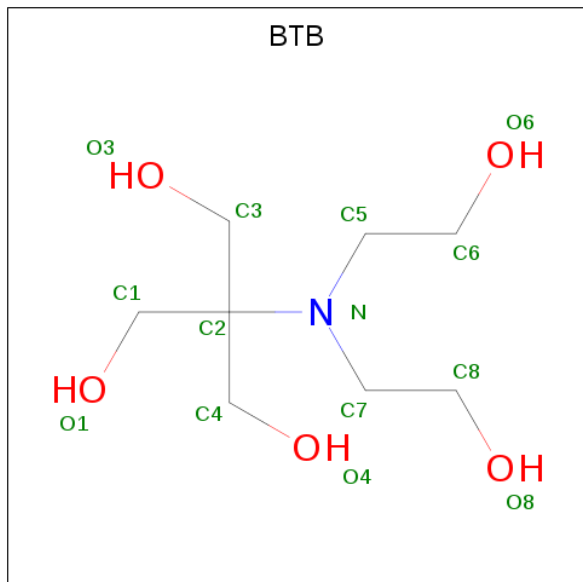


Mol	Chain	Residues	Atoms				ZeroOcc	AltConf
3	A	1	Total	C	N	O	0	0
			18	12	2	4		
3	B	1	Total	C	N	O	0	0
			18	12	2	4		

- Molecule 4 is ZINC ION (three-letter code: ZN) (formula: Zn).

Mol	Chain	Residues	Atoms		ZeroOcc	AltConf
4	B	1	Total	Zn	0	0
			1	1		
4	A	1	Total	Zn	0	0
			1	1		
4	D	1	Total	Zn	0	0
			1	1		
4	C	1	Total	Zn	0	0
			1	1		

- Molecule 5 is 2-[BIS-(2-HYDROXY-ETHYL)-AMINO]-2-HYDROXYMETHYL-PROPAN E-1,3-DIOL (three-letter code: BTB) (formula: $C_8H_{19}NO_5$).



Mol	Chain	Residues	Atoms				ZeroOcc	AltConf
5	A	1	Total	C	N	O	0	0
			14	8	1	5		
5	B	1	Total	C	N	O	0	0
			14	8	1	5		

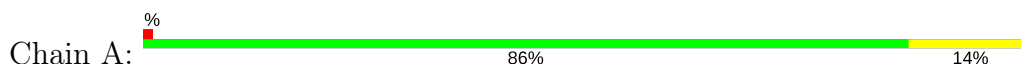
- Molecule 6 is water.

Mol	Chain	Residues	Atoms		ZeroOcc	AltConf
6	A	140	Total	O	0	0
			140	140		
6	B	113	Total	O	0	0
			113	113		
6	C	80	Total	O	0	0
			80	80		
6	D	93	Total	O	0	0
			93	93		

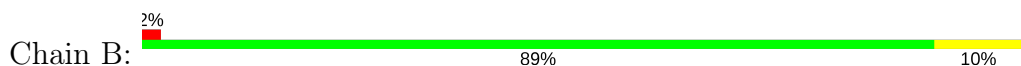
3 Residue-property plots [i](#)

These plots are drawn for all protein, RNA and DNA chains in the entry. The first graphic for a chain summarises the proportions of the various outlier classes displayed in the second graphic. The second graphic shows the sequence view annotated by issues in geometry and electron density. Residues are color-coded according to the number of geometric quality criteria for which they contain at least one outlier: green = 0, yellow = 1, orange = 2 and red = 3 or more. A red dot above a residue indicates a poor fit to the electron density ($RSRZ > 2$). Stretches of 2 or more consecutive residues without any outlier are shown as a green connector. Residues present in the sample, but not in the model, are shown in grey.

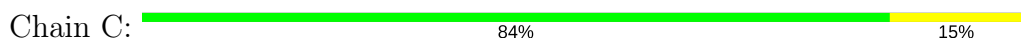
- Molecule 1: Cytochrome cb562



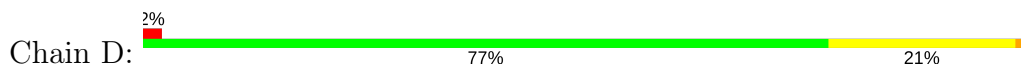
- Molecule 1: Cytochrome cb562



- Molecule 1: Cytochrome cb562



- Molecule 1: Cytochrome cb562



4 Data and refinement statistics

Property	Value	Source
Space group	P 21 21 21	Depositor
Cell constants a, b, c, α , β , γ	63.63Å 76.40Å 93.27Å 90.00° 90.00° 90.00°	Depositor
Resolution (Å)	22.50 – 1.84 22.55 – 1.84	Depositor EDS
% Data completeness (in resolution range)	99.4 (22.50-1.84) 99.4 (22.55-1.84)	Depositor EDS
R_{merge}	(Not available)	Depositor
R_{sym}	(Not available)	Depositor
$\langle I/\sigma(I) \rangle$ ¹	1.98 (at 1.84Å)	Xtriage
Refinement program	REFMAC	Depositor
R, R_{free}	0.190 , 0.243 0.191 , 0.244	Depositor DCC
R_{free} test set	2867 reflections (7.18%)	wwPDB-VP
Wilson B-factor (Å ²)	17.8	Xtriage
Anisotropy	0.099	Xtriage
Bulk solvent k_{sol} (e/Å ³), B_{sol} (Å ²)	0.36 , 43.1	EDS
L-test for twinning ²	$\langle L \rangle = 0.50$, $\langle L^2 \rangle = 0.33$	Xtriage
Estimated twinning fraction	No twinning to report.	Xtriage
F_o, F_c correlation	0.95	EDS
Total number of atoms	3966	wwPDB-VP
Average B, all atoms (Å ²)	19.0	wwPDB-VP

Xtriage's analysis on translational NCS is as follows: *The largest off-origin peak in the Patterson function is 6.10% of the height of the origin peak. No significant pseudotranslation is detected.*

¹Intensities estimated from amplitudes.

²Theoretical values of $\langle |L| \rangle$, $\langle L^2 \rangle$ for acentric reflections are 0.5, 0.333 respectively for untwinned datasets, and 0.375, 0.2 for perfectly twinned datasets.

5 Model quality

5.1 Standard geometry

Bond lengths and bond angles in the following residue types are not validated in this section: HEM, ZN, ME9, BTB

The Z score for a bond length (or angle) is the number of standard deviations the observed value is removed from the expected value. A bond length (or angle) with $|Z| > 5$ is considered an outlier worth inspection. RMSZ is the root-mean-square of all Z scores of the bond lengths (or angles).

Mol	Chain	Bond lengths		Bond angles	
		RMSZ	$\# Z > 5$	RMSZ	$\# Z > 5$
1	A	1.11	0/843	0.91	1/1140 (0.1%)
1	B	1.02	0/851	0.88	1/1151 (0.1%)
1	C	0.98	0/836	0.85	0/1130
1	D	1.01	3/842 (0.4%)	0.86	0/1138
All	All	1.03	3/3372 (0.1%)	0.88	2/4559 (0.0%)

Chiral center outliers are detected by calculating the chiral volume of a chiral center and verifying if the center is modelled as a planar moiety or with the opposite hand. A planarity outlier is detected by checking planarity of atoms in a peptide group, atoms in a mainchain group or atoms of a sidechain that are expected to be planar.

Mol	Chain	#Chirality outliers	#Planarity outliers
1	D	0	1

All (3) bond length outliers are listed below:

Mol	Chain	Res	Type	Atoms	Z	Observed(Å)	Ideal(Å)
1	D	86	GLU	CB-CG	5.52	1.62	1.52
1	D	18	GLU	CB-CG	-5.12	1.42	1.52
1	D	101	CYS	CB-SG	5.06	1.90	1.82

All (2) bond angle outliers are listed below:

Mol	Chain	Res	Type	Atoms	Z	Observed(°)	Ideal(°)
1	B	7	MET	CG-SD-CE	-5.39	91.58	100.20
1	A	101	CYS	CA-CB-SG	-5.32	104.42	114.00

There are no chirality outliers.

All (1) planarity outliers are listed below:

Mol	Chain	Res	Type	Group
1	D	42[A]	SER	Mainchain

5.2 Too-close contacts ⓘ

In the following table, the Non-H and H(model) columns list the number of non-hydrogen atoms and hydrogen atoms in the chain respectively. The H(added) column lists the number of hydrogen atoms added and optimized by MolProbity. The Clashes column lists the number of clashes within the asymmetric unit, whereas Symm-Clashes lists symmetry related clashes.

Mol	Chain	Non-H	H(model)	H(added)	Clashes	Symm-Clashes
1	A	825	0	799	22	0
1	B	830	0	803	12	0
1	C	821	0	792	15	0
1	D	824	0	798	24	0
2	A	43	0	30	3	0
2	B	43	0	30	3	0
2	C	43	0	30	2	0
2	D	43	0	30	10	0
3	A	18	0	10	1	0
3	B	18	0	10	0	0
4	A	1	0	0	0	0
4	B	1	0	0	0	0
4	C	1	0	0	0	0
4	D	1	0	0	0	0
5	A	14	0	17	15	0
5	B	14	0	19	6	0
6	A	140	0	0	2	0
6	B	113	0	0	3	0
6	C	80	0	0	3	0
6	D	93	0	0	2	0
All	All	3966	0	3368	87	0

The all-atom clashscore is defined as the number of clashes found per 1000 atoms (including hydrogen atoms). The all-atom clashscore for this structure is 13.

The worst 5 of 87 close contacts within the same asymmetric unit are listed below, sorted by their clash magnitude.

Atom-1	Atom-2	Interatomic distance (Å)	Clash overlap (Å)
1:D:101:CYS:SG	2:D:150:HEM:HAC	1.68	1.27
1:B:98:CYS:SG	2:B:150:HEM:HAB	1.67	1.26
1:D:101:CYS:HG	2:D:150:HEM:CAC	1.49	1.20

Continued on next page...

Continued from previous page...

Atom-1	Atom-2	Interatomic distance (Å)	Clash overlap (Å)
5:B:107:BTB:O8	5:B:107:BTB:H41	1.53	1.09
1:C:22:ASN:HD21	1:C:25:GLN:HG3	1.14	1.07

There are no symmetry-related clashes.

5.3 Torsion angles [i](#)

5.3.1 Protein backbone [i](#)

In the following table, the Percentiles column shows the percent Ramachandran outliers of the chain as a percentile score with respect to all X-ray entries followed by that with respect to entries of similar resolution.

The Analysed column shows the number of residues for which the backbone conformation was analysed, and the total number of residues.

Mol	Chain	Analysed	Favoured	Allowed	Outliers	Percentiles	
1	A	105/106 (99%)	105 (100%)	0	0	100	100
1	B	106/106 (100%)	106 (100%)	0	0	100	100
1	C	104/106 (98%)	104 (100%)	0	0	100	100
1	D	105/106 (99%)	105 (100%)	0	0	100	100
All	All	420/424 (99%)	420 (100%)	0	0	100	100

There are no Ramachandran outliers to report.

5.3.2 Protein sidechains [i](#)

In the following table, the Percentiles column shows the percent sidechain outliers of the chain as a percentile score with respect to all X-ray entries followed by that with respect to entries of similar resolution.

The Analysed column shows the number of residues for which the sidechain conformation was analysed, and the total number of residues.

Mol	Chain	Analysed	Rotameric	Outliers	Percentiles	
1	A	86/85 (101%)	85 (99%)	1 (1%)	74	64
1	B	87/85 (102%)	85 (98%)	2 (2%)	53	36
1	C	85/85 (100%)	80 (94%)	5 (6%)	21	6

Continued on next page...

Continued from previous page...

Mol	Chain	Analysed	Rotameric	Outliers	Percentiles	
1	D	86/85 (101%)	82 (95%)	4 (5%)	29	11
All	All	344/340 (101%)	332 (96%)	12 (4%)	39	20

5 of 12 residues with a non-rotameric sidechain are listed below:

Mol	Chain	Res	Type
1	C	22	ASN
1	C	46	PRO
1	D	46	PRO
1	C	21	ASP
1	D	22	ASN

Some sidechains can be flipped to improve hydrogen bonding and reduce clashes. 5 of 14 such sidechains are listed below:

Mol	Chain	Res	Type
1	C	59	HIS
1	C	71	GLN
1	D	25	GLN
1	C	22	ASN
1	D	22	ASN

5.3.3 RNA [i](#)

There are no RNA molecules in this entry.

5.4 Non-standard residues in protein, DNA, RNA chains [i](#)

There are no non-standard protein/DNA/RNA residues in this entry.

5.5 Carbohydrates [i](#)

There are no carbohydrates in this entry.

5.6 Ligand geometry [i](#)

Of 12 ligands modelled in this entry, 4 are monoatomic - leaving 8 for Mogul analysis.

In the following table, the Counts columns list the number of bonds (or angles) for which Mogul statistics could be retrieved, the number of bonds (or angles) that are observed in the model and

the number of bonds (or angles) that are defined in the Chemical Component Dictionary. The Link column lists molecule types, if any, to which the group is linked. The Z score for a bond length (or angle) is the number of standard deviations the observed value is removed from the expected value. A bond length (or angle) with $|Z| > 2$ is considered an outlier worth inspection. RMSZ is the root-mean-square of all Z scores of the bond lengths (or angles).

Mol	Type	Chain	Res	Link	Bond lengths			Bond angles		
					Counts	RMSZ	$\# Z > 2$	Counts	RMSZ	$\# Z > 2$
5	BTB	A	107	-	13,13,13	2.84	5 (38%)	7,16,16	3.34	3 (42%)
2	HEM	A	150	1	27,50,50	2.45	10 (37%)	17,82,82	2.32	6 (35%)
3	ME9	A	501	1	19,19,19	3.59	8 (42%)	26,26,26	2.74	8 (30%)
5	BTB	B	107	-	13,13,13	1.60	1 (7%)	7,16,16	1.48	1 (14%)
2	HEM	B	150	1	27,50,50	1.98	6 (22%)	17,82,82	2.29	6 (35%)
3	ME9	B	501	1	19,19,19	3.98	8 (42%)	26,26,26	1.73	8 (30%)
2	HEM	C	150	1	27,50,50	2.07	7 (25%)	17,82,82	1.98	5 (29%)
2	HEM	D	150	1	27,50,50	2.20	9 (33%)	17,82,82	2.53	7 (41%)

In the following table, the Chirals column lists the number of chiral outliers, the number of chiral centers analysed, the number of these observed in the model and the number defined in the Chemical Component Dictionary. Similar counts are reported in the Torsion and Rings columns. '-' means no outliers of that kind were identified.

Mol	Type	Chain	Res	Link	Chirals	Torsions	Rings
5	BTB	A	107	-	-	0/21/21/21	0/0/0/0
2	HEM	A	150	1	-	0/6/54/54	0/0/8/8
3	ME9	A	501	1	-	0/7/33/33	0/2/2/2
5	BTB	B	107	-	-	0/21/21/21	0/0/0/0
2	HEM	B	150	1	-	0/6/54/54	0/0/8/8
3	ME9	B	501	1	-	0/7/33/33	0/2/2/2
2	HEM	C	150	1	-	0/6/54/54	0/0/8/8
2	HEM	D	150	1	-	0/6/54/54	0/0/8/8

The worst 5 of 54 bond length outliers are listed below:

Mol	Chain	Res	Type	Atoms	Z	Observed(Å)	Ideal(Å)
3	B	501	ME9	CAF-CAN	-8.39	1.33	1.48
3	B	501	ME9	CAG-CAO	-7.95	1.33	1.48
3	B	501	ME9	CAE-CAM	-7.70	1.34	1.48
3	A	501	ME9	CAE-CAM	-7.52	1.34	1.48
3	B	501	ME9	CAH-CAP	-7.39	1.34	1.48

The worst 5 of 44 bond angle outliers are listed below:

Mol	Chain	Res	Type	Atoms	Z	Observed(°)	Ideal(°)
5	A	107	BTB	O1-C1-C2	-7.08	91.46	111.37
3	A	501	ME9	CAN-NAQ-CAM	-5.38	105.47	109.95
2	B	150	HEM	CBD-CAD-C3D	-5.20	102.54	112.47
2	A	150	HEM	CBD-CAD-C3D	-4.98	102.96	112.47
3	A	501	ME9	CAP-NAR-CAO	-4.70	106.03	109.95

There are no chirality outliers.

There are no torsion outliers.

There are no ring outliers.

7 monomers are involved in 40 short contacts:

Mol	Chain	Res	Type	Clashes	Symm-Clashes
5	A	107	BTB	15	0
2	A	150	HEM	3	0
3	A	501	ME9	1	0
5	B	107	BTB	6	0
2	B	150	HEM	3	0
2	C	150	HEM	2	0
2	D	150	HEM	10	0

5.7 Other polymers [i](#)

There are no such residues in this entry.

5.8 Polymer linkage issues [i](#)

There are no chain breaks in this entry.

6 Fit of model and data [i](#)

6.1 Protein, DNA and RNA chains [i](#)

In the following table, the column labelled ‘#RSRZ> 2’ contains the number (and percentage) of RSRZ outliers, followed by percent RSRZ outliers for the chain as percentile scores relative to all X-ray entries and entries of similar resolution. The OWAB column contains the minimum, median, 95th percentile and maximum values of the occupancy-weighted average B-factor per residue. The column labelled ‘Q< 0.9’ lists the number of (and percentage) of residues with an average occupancy less than 0.9.

Mol	Chain	Analysed	<RSRZ>	#RSRZ>2	OWAB(Å ²)	Q<0.9
1	A	106/106 (100%)	-0.31	1 (0%) 84 84	9, 14, 21, 26	1 (0%)
1	B	106/106 (100%)	-0.14	2 (1%) 66 65	9, 16, 35, 43	0
1	C	106/106 (100%)	-0.09	0 100 100	9, 22, 33, 39	0
1	D	106/106 (100%)	-0.11	2 (1%) 66 65	10, 19, 32, 41	0
All	All	424/424 (100%)	-0.16	5 (1%) 79 79	9, 18, 32, 43	1 (0%)

All (5) RSRZ outliers are listed below:

Mol	Chain	Res	Type	RSRZ
1	B	54	ASP	5.5
1	D	21	ASP	3.1
1	B	50	ASP	2.5
1	D	8	GLU	2.1
1	A	8	GLU	2.0

6.2 Non-standard residues in protein, DNA, RNA chains [i](#)

There are no non-standard protein/DNA/RNA residues in this entry.

6.3 Carbohydrates [i](#)

There are no carbohydrates in this entry.

6.4 Ligands [i](#)

In the following table, the Atoms column lists the number of modelled atoms in the group and the number defined in the chemical component dictionary. The B-factors column lists the minimum,

median, 95th percentile and maximum values of B factors of atoms in the group. The column labelled 'Q< 0.9' lists the number of atoms with occupancy less than 0.9.

Mol	Type	Chain	Res	Atoms	RSCC	RSR	B-factors(Å ²)	Q<0.9
5	BTB	A	107	14/14	0.70	0.27	19,35,41,44	0
5	BTB	B	107	14/14	0.71	0.21	42,45,48,48	0
3	ME9	B	501	18/18	0.82	0.23	37,45,52,54	0
3	ME9	A	501	18/18	0.89	0.16	16,28,33,35	0
2	HEM	C	150	43/43	0.94	0.12	8,19,36,45	0
2	HEM	D	150	43/43	0.95	0.10	9,14,36,47	0
2	HEM	A	150	43/43	0.96	0.12	7,10,24,37	0
2	HEM	B	150	43/43	0.97	0.10	7,12,33,38	0
4	ZN	C	500	1/1	1.00	0.02	12,12,12,12	0
4	ZN	B	500	1/1	1.00	0.06	15,15,15,15	0
4	ZN	D	500	1/1	1.00	0.06	13,13,13,13	0
4	ZN	A	500	1/1	1.00	0.04	12,12,12,12	0

6.5 Other polymers [i](#)

There are no such residues in this entry.