



Full wwPDB X-ray Structure Validation Report ⓘ

Mar 7, 2018 – 05:57 pm GMT

PDB ID : 3QX9
Title : Crystal structure of MID domain from hAGO2 in complex with ATP
Authors : Frank, F.; Fabian, M.R.; Stepinski, J.; Jemielity, J.; Darzynkiewicz, E.; Sonnenberg, N.; Nagar, B.
Deposited on : 2011-03-01
Resolution : 2.00 Å(reported)

This is a Full wwPDB X-ray Structure Validation Report for a publicly released PDB entry.

We welcome your comments at validation@mail.wwpdb.org

A user guide is available at

<https://www.wwpdb.org/validation/2017/XrayValidationReportHelp>

with specific help available everywhere you see the ⓘ symbol.

The following versions of software and data (see [references ⓘ](#)) were used in the production of this report:

MolProbity : 4.02b-467
Mogul : 1.7.3 (157068), CSD as539be (2018)
Xtriage (Phenix) : 1.13
EDS : trunk30967
Percentile statistics : (not set)
Refmac : 5.8.0158
CCP4 : 7.0 (Gargrove)
Ideal geometry (proteins) : Engh & Huber (2001)
Ideal geometry (DNA, RNA) : Parkinson et al. (1996)
Validation Pipeline (wwPDB-VP) : trunk30967

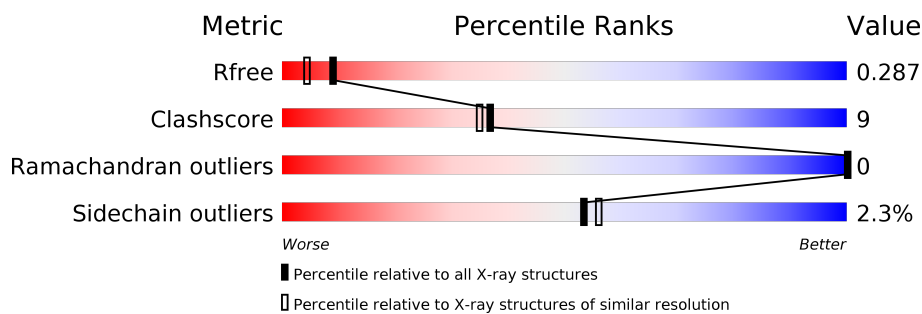
1 Overall quality at a glance

The following experimental techniques were used to determine the structure:

X-RAY DIFFRACTION




The reported resolution of this entry is 2.00 Å.

Percentile scores (ranging between 0-100) for global validation metrics of the entry are shown in the following graphic. The table shows the number of entries on which the scores are based.



Metric	Whole archive (#Entries)	Similar resolution (#Entries, resolution range(Å))
R_{free}	111664	7193 (2.00-2.00)
Clashscore	122126	8267 (2.00-2.00)
Ramachandran outliers	120053	8166 (2.00-2.00)
Sidechain outliers	120020	8165 (2.00-2.00)

The table below summarises the geometric issues observed across the polymeric chains and their fit to the electron density. The red, orange, yellow and green segments on the lower bar indicate the fraction of residues that contain outliers for ≥ 3 , 2, 1 and 0 types of geometric quality criteria. A grey segment represents the fraction of residues that are not modelled. The numeric value for each fraction is indicated below the corresponding segment, with a dot representing fractions $\leq 5\%$.

Mol	Chain	Length	Quality of chain
1	A	138	
1	B	138	
1	C	138	

2 Entry composition [i](#)

There are 3 unique types of molecules in this entry. The entry contains 3429 atoms, of which 0 are hydrogens and 0 are deuteriums.

In the tables below, the ZeroOcc column contains the number of atoms modelled with zero occupancy, the AltConf column contains the number of residues with at least one atom in alternate conformation and the Trace column contains the number of residues modelled with at most 2 atoms.

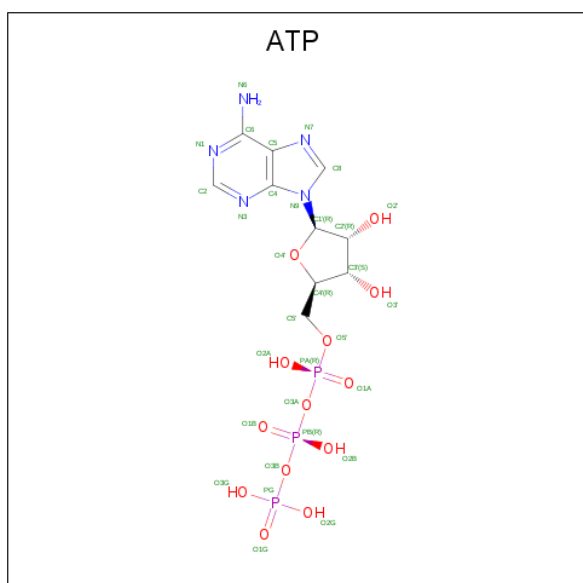
- Molecule 1 is a protein called Protein argonaute-2.

Mol	Chain	Residues	Atoms					ZeroOcc	AltConf	Trace
1	A	135	Total	C	N	O	S	0	0	0
			1047	666	187	184	10			
1	B	132	Total	C	N	O	S	0	0	0
			1027	653	183	181	10			
1	C	133	Total	C	N	O	S	0	0	0
			1036	659	185	182	10			

There are 3 discrepancies between the modelled and reference sequences:

Chain	Residue	Modelled	Actual	Comment	Reference
A	438	SER	-	EXPRESSION TAG	UNP Q9UKV8
B	438	SER	-	EXPRESSION TAG	UNP Q9UKV8
C	438	SER	-	EXPRESSION TAG	UNP Q9UKV8

- Molecule 2 is ADENOSINE-5'-TRIPHOSPHATE (three-letter code: ATP) (formula: $C_{10}H_{16}N_5O_{13}P_3$).



Mol	Chain	Residues	Atoms					ZeroOcc	AltConf
2	A	1	Total	C	N	O	P	0	0
			31	10	5	13	3		
2	B	1	Total	C	N	O	P	3	0
			31	10	5	13	3		
2	C	1	Total	C	N	O	P	2	0
			31	10	5	13	3		


- Molecule 3 is water.

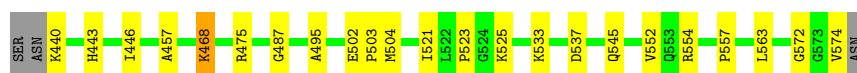
Mol	Chain	Residues	Atoms		ZeroOcc	AltConf
3	A	102	Total	O	0	0
			102	102		
3	B	54	Total	O	0	0
			54	54		
3	C	70	Total	O	0	0
			70	70		

3 Residue-property plots [i](#)

These plots are drawn for all protein, RNA and DNA chains in the entry. The first graphic for a chain summarises the proportions of the various outlier classes displayed in the second graphic. The second graphic shows the sequence view annotated by issues in geometry. Residues are color-coded according to the number of geometric quality criteria for which they contain at least one outlier: green = 0, yellow = 1, orange = 2 and red = 3 or more. Stretches of 2 or more consecutive residues without any outlier are shown as a green connector. Residues present in the sample, but not in the model, are shown in grey.

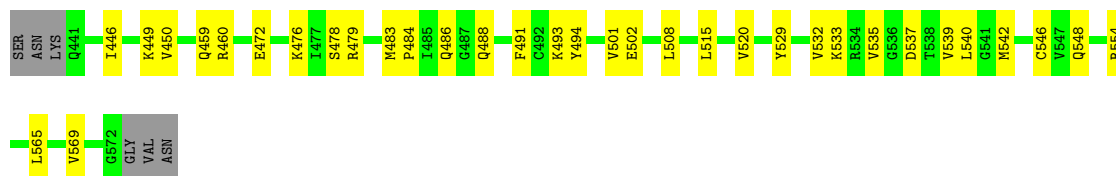
- Molecule 1: Protein argonaute-2

Chain A:  81% 16% ..




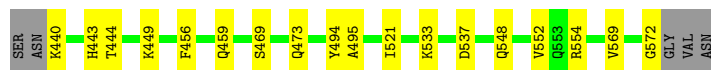
- Molecule 1: Protein argonaute-2

Chain B:  71% 25% .



- Molecule 1: Protein argonaute-2

Chain C:  83% 13% .



4 Data and refinement statistics

Property	Value	Source
Space group	P 1	Depositor
Cell constants a, b, c, α , β , γ	40.49Å 46.51Å 65.82Å 87.14° 73.56° 84.56°	Depositor
Resolution (Å)	28.70 – 2.00 37.76 – 1.67	Depositor EDS
% Data completeness (in resolution range)	84.8 (28.70-2.00) 81.2 (37.76-1.67)	Depositor EDS
R_{merge}	(Not available)	Depositor
R_{sym}	(Not available)	Depositor
$\langle I/\sigma(I) \rangle$ ¹	0.00 (at 1.67Å)	Xtriage
Refinement program	PHENIX (phenix.refine: 1.5_2)	Depositor
R, R_{free}	0.197 , 0.250 0.268 , 0.287	Depositor DCC
R_{free} test set	2776 reflections (5.92%)	wwPDB-VP
Wilson B-factor (Å ²)	28.1	Xtriage
Anisotropy	0.300	Xtriage
Bulk solvent k_{sol} (e/Å ³), B_{sol} (Å ²)	0.36 , 38.5	EDS
L-test for twinning ²	$\langle L \rangle = 0.50$, $\langle L^2 \rangle = 0.33$	Xtriage
Estimated twinning fraction	0.000 for -h,-k,-h+l	Xtriage
F_o, F_c correlation	0.89	EDS
Total number of atoms	3429	wwPDB-VP
Average B, all atoms (Å ²)	37.0	wwPDB-VP

Xtriage's analysis on translational NCS is as follows: *The largest off-origin peak in the Patterson function is 8.51% of the height of the origin peak. No significant pseudotranslation is detected.*

¹Intensities estimated from amplitudes.

²Theoretical values of $\langle |L| \rangle$, $\langle L^2 \rangle$ for acentric reflections are 0.5, 0.333 respectively for untwinned datasets, and 0.375, 0.2 for perfectly twinned datasets.

5 Model quality

5.1 Standard geometry

Bond lengths and bond angles in the following residue types are not validated in this section: ATP

The Z score for a bond length (or angle) is the number of standard deviations the observed value is removed from the expected value. A bond length (or angle) with $|Z| > 5$ is considered an outlier worth inspection. RMSZ is the root-mean-square of all Z scores of the bond lengths (or angles).

Mol	Chain	Bond lengths		Bond angles	
		RMSZ	# Z >5	RMSZ	# Z >5
1	A	0.70	0/1066	0.73	0/1440
1	B	0.80	0/1046	0.79	0/1414
1	C	0.76	0/1055	0.76	0/1425
All	All	0.76	0/3167	0.76	0/4279

There are no bond length outliers.

There are no bond angle outliers.

There are no chirality outliers.

There are no planarity outliers.

5.2 Too-close contacts

In the following table, the Non-H and H(model) columns list the number of non-hydrogen atoms and hydrogen atoms in the chain respectively. The H(added) column lists the number of hydrogen atoms added and optimized by MolProbity. The Clashes column lists the number of clashes within the asymmetric unit, whereas Symm-Clashes lists symmetry related clashes.

Mol	Chain	Non-H	H(model)	H(added)	Clashes	Symm-Clashes
1	A	1047	0	1089	15	0
1	B	1027	0	1064	29	0
1	C	1036	0	1077	12	0
2	A	31	0	12	1	0
2	B	31	0	12	5	0
2	C	31	0	12	2	0
3	A	102	0	0	0	0
3	B	54	0	0	1	0
3	C	70	0	0	0	0
All	All	3429	0	3266	55	0

The all-atom clashscore is defined as the number of clashes found per 1000 atoms (including hydrogen atoms). The all-atom clashscore for this structure is 9.

All (55) close contacts within the same asymmetric unit are listed below, sorted by their clash magnitude.

Atom-1	Atom-2	Interatomic distance (Å)	Clash overlap (Å)
1:B:548:GLN:HE22	2:B:1:ATP:H8	1.11	0.95
1:C:440:LYS:HE3	1:C:443:HIS:NE2	1.99	0.76
1:B:548:GLN:NE2	2:B:1:ATP:H8	1.86	0.74
1:B:548:GLN:HE21	2:B:1:ATP:H1'	1.54	0.71
1:B:548:GLN:NE2	2:B:1:ATP:C8	2.59	0.70
1:B:533:LYS:O	1:B:537:ASP:HB2	1.91	0.69
1:B:548:GLN:NE2	2:B:1:ATP:H1'	2.09	0.67
1:C:548:GLN:HE21	2:C:1:ATP:H1'	1.62	0.65
1:A:533:LYS:O	1:A:537:ASP:HB2	1.98	0.63
1:B:491:PHE:CD2	1:B:508:LEU:HD21	2.34	0.63
1:A:443:HIS:CE1	1:A:574:VAL:HB	2.36	0.61
1:A:521:ILE:HD13	1:A:552:VAL:HG21	1.84	0.60
1:B:446:ILE:O	1:B:484:PRO:HD2	2.02	0.60
1:B:450:VAL:HG12	1:B:515:LEU:HA	1.85	0.58
1:B:529:TYR:CE1	1:B:533:LYS:HD2	2.39	0.57
1:C:548:GLN:NE2	2:C:1:ATP:H1'	2.22	0.55
1:B:460:ARG:NH2	3:B:139:HOH:O	2.42	0.53
1:A:443:HIS:HE1	1:A:574:VAL:HB	1.73	0.53
1:B:486:GLN:HG2	1:B:488:GLN:H	1.72	0.53
1:B:502:GLU:HG3	1:B:535:VAL:HG22	1.89	0.52
1:B:478:SER:HB2	1:B:483:MET:O	2.10	0.51
1:A:502:GLU:N	1:A:503:PRO:CD	2.75	0.50
1:B:459:GLN:HG3	1:B:494:TYR:CZ	2.46	0.50
1:B:483:MET:O	1:B:483:MET:HG3	2.11	0.50
1:C:440:LYS:HE2	1:C:569:VAL:HA	1.94	0.49
1:B:565:LEU:O	1:B:569:VAL:HG23	2.12	0.49
1:C:533:LYS:O	1:C:537:ASP:HB2	2.11	0.49
1:B:539:VAL:HG12	1:B:540:LEU:CD1	2.42	0.49
1:B:459:GLN:HA	1:B:494:TYR:CE1	2.47	0.49
1:A:495:ALA:HB2	1:A:504:MET:CE	2.44	0.48
1:A:457:ALA:HA	1:A:523:PRO:HG3	1.96	0.45
1:A:525:LYS:HA	2:A:1:ATP:C2	2.51	0.45
1:C:521:ILE:HD12	1:C:552:VAL:HG21	1.98	0.45
1:A:502:GLU:N	1:A:503:PRO:HD2	2.32	0.45
1:B:539:VAL:HG12	1:B:540:LEU:HD13	1.99	0.44
1:C:456:PHE:HA	1:C:495:ALA:O	2.17	0.44
1:A:475:ARG:HD3	1:A:487:GLY:HA3	1.99	0.44

Continued on next page...

Continued from previous page...

Atom-1	Atom-2	Interatomic distance (Å)	Clash overlap (Å)
1:B:476:LYS:HE2	1:B:476:LYS:HB3	1.88	0.44
1:A:495:ALA:HB2	1:A:504:MET:HE3	1.99	0.43
1:C:443:HIS:CD2	1:C:572:GLY:HA3	2.53	0.43
1:C:459:GLN:HA	1:C:494:TYR:CE1	2.54	0.43
1:A:446:ILE:HD11	1:A:572:GLY:HA2	2.00	0.43
1:B:472:GLU:HG2	1:C:444:THR:HG23	1.99	0.43
1:B:449:LYS:HD2	1:B:486:GLN:OE1	2.19	0.43
1:A:533:LYS:HA	1:A:533:LYS:HD3	1.73	0.42
1:B:450:VAL:CG1	1:B:515:LEU:HA	2.50	0.42
1:B:540:LEU:HB3	1:B:542:MET:HG3	2.02	0.42
1:B:491:PHE:CZ	1:B:493:LYS:HG3	2.55	0.42
1:C:440:LYS:CE	1:C:443:HIS:NE2	2.77	0.41
1:C:469:SER:O	1:C:473:GLN:HG3	2.20	0.41
1:B:501:VAL:HG11	1:B:532:VAL:HA	2.02	0.41
1:A:545:GLN:CG	1:A:563:LEU:HD11	2.50	0.41
1:B:520:VAL:O	1:B:546:CYS:HA	2.21	0.41
1:A:468:LYS:HD2	1:A:468:LYS:HA	1.46	0.40
1:B:491:PHE:CG	1:B:508:LEU:HD21	2.56	0.40

There are no symmetry-related clashes.

5.3 Torsion angles ⓘ

5.3.1 Protein backbone ⓘ

In the following table, the Percentiles column shows the percent Ramachandran outliers of the chain as a percentile score with respect to all X-ray entries followed by that with respect to entries of similar resolution.

The Analysed column shows the number of residues for which the backbone conformation was analysed, and the total number of residues.

Mol	Chain	Analysed	Favoured	Allowed	Outliers	Percentiles	
1	A	133/138 (96%)	130 (98%)	3 (2%)	0	100	100
1	B	130/138 (94%)	124 (95%)	6 (5%)	0	100	100
1	C	131/138 (95%)	128 (98%)	3 (2%)	0	100	100
All	All	394/414 (95%)	382 (97%)	12 (3%)	0	100	100

There are no Ramachandran outliers to report.

5.3.2 Protein sidechains [i](#)

In the following table, the Percentiles column shows the percent sidechain outliers of the chain as a percentile score with respect to all X-ray entries followed by that with respect to entries of similar resolution.

The Analysed column shows the number of residues for which the sidechain conformation was analysed, and the total number of residues.

Mol	Chain	Analysed	Rotameric	Outliers	Percentiles	
1	A	116/119 (98%)	112 (97%)	4 (3%)	40	38
1	B	114/119 (96%)	112 (98%)	2 (2%)	62	66
1	C	115/119 (97%)	113 (98%)	2 (2%)	63	68
All	All	345/357 (97%)	337 (98%)	8 (2%)	53	56

All (8) residues with a non-rotameric sidechain are listed below:

Mol	Chain	Res	Type
1	A	440	LYS
1	A	468	LYS
1	A	554	ARG
1	A	557	PRO
1	B	479	ARG
1	B	554	ARG
1	C	449	LYS
1	C	554	ARG

Some sidechains can be flipped to improve hydrogen bonding and reduce clashes. All (7) such sidechains are listed below:

Mol	Chain	Res	Type
1	A	443	HIS
1	B	441	GLN
1	B	496	GLN
1	B	548	GLN
1	C	488	GLN
1	C	548	GLN
1	C	551	ASN

5.3.3 RNA [i](#)

There are no RNA molecules in this entry.

5.4 Non-standard residues in protein, DNA, RNA chains [i](#)

There are no non-standard protein/DNA/RNA residues in this entry.

5.5 Carbohydrates [i](#)

There are no carbohydrates in this entry.

5.6 Ligand geometry [i](#)

3 ligands are modelled in this entry.

In the following table, the Counts columns list the number of bonds (or angles) for which Mogul statistics could be retrieved, the number of bonds (or angles) that are observed in the model and the number of bonds (or angles) that are defined in the Chemical Component Dictionary. The Link column lists molecule types, if any, to which the group is linked. The Z score for a bond length (or angle) is the number of standard deviations the observed value is removed from the expected value. A bond length (or angle) with $|Z| > 2$ is considered an outlier worth inspection. RMSZ is the root-mean-square of all Z scores of the bond lengths (or angles).

Mol	Type	Chain	Res	Link	Bond lengths			Bond angles		
					Counts	RMSZ	$\# Z > 2$	Counts	RMSZ	$\# Z > 2$
2	ATP	A	1	-	27,33,33	0.97	1 (3%)	27,52,52	1.76	4 (14%)
2	ATP	B	1	-	27,33,33	1.00	1 (3%)	27,52,52	1.80	4 (14%)
2	ATP	C	1	-	27,33,33	1.07	1 (3%)	27,52,52	1.99	5 (18%)

In the following table, the Chirals column lists the number of chiral outliers, the number of chiral centers analysed, the number of these observed in the model and the number defined in the Chemical Component Dictionary. Similar counts are reported in the Torsion and Rings columns. '-' means no outliers of that kind were identified.

Mol	Type	Chain	Res	Link	Chirals	Torsions	Rings
2	ATP	A	1	-	-	0/18/38/38	0/3/3/3
2	ATP	B	1	-	-	0/18/38/38	0/3/3/3
2	ATP	C	1	-	-	0/18/38/38	0/3/3/3

All (3) bond length outliers are listed below:

Mol	Chain	Res	Type	Atoms	Z	Observed(Å)	Ideal(Å)
2	A	1	ATP	C5-C4	3.08	1.47	1.40
2	B	1	ATP	C5-C4	3.34	1.48	1.40
2	C	1	ATP	C5-C4	3.45	1.48	1.40

All (13) bond angle outliers are listed below:

Mol	Chain	Res	Type	Atoms	Z	Observed(°)	Ideal(°)
2	C	1	ATP	N3-C2-N1	-6.29	123.48	128.86
2	A	1	ATP	N3-C2-N1	-5.71	123.97	128.86
2	B	1	ATP	N3-C2-N1	-5.50	124.15	128.86
2	C	1	ATP	C4'-O4'-C1'	-3.96	105.70	109.83
2	C	1	ATP	PA-O3A-PB	-3.71	120.17	132.63
2	B	1	ATP	PB-O3B-PG	-3.60	120.54	132.63
2	B	1	ATP	PA-O3A-PB	-3.49	120.90	132.63
2	A	1	ATP	PA-O3A-PB	-3.30	121.53	132.63
2	C	1	ATP	PB-O3B-PG	-3.19	121.91	132.63
2	A	1	ATP	C4-C5-N7	-3.16	106.35	109.41
2	A	1	ATP	PB-O3B-PG	-3.14	122.08	132.63
2	B	1	ATP	C4-C5-N7	-2.38	107.11	109.41
2	C	1	ATP	C4-C5-N7	-2.18	107.30	109.41

There are no chirality outliers.

There are no torsion outliers.

There are no ring outliers.

3 monomers are involved in 8 short contacts:

Mol	Chain	Res	Type	Clashes	Symm-Clashes
2	A	1	ATP	1	0
2	B	1	ATP	5	0
2	C	1	ATP	2	0

5.7 Other polymers [i](#)

There are no such residues in this entry.

5.8 Polymer linkage issues [i](#)

There are no chain breaks in this entry.

6 Fit of model and data [i](#)

6.1 Protein, DNA and RNA chains [i](#)

Unable to reproduce the depositors R factor - this section is therefore empty.

6.2 Non-standard residues in protein, DNA, RNA chains [i](#)

Unable to reproduce the depositors R factor - this section is therefore empty.

6.3 Carbohydrates [i](#)

Unable to reproduce the depositors R factor - this section is therefore empty.

6.4 Ligands [i](#)

Unable to reproduce the depositors R factor - this section is therefore empty.

6.5 Other polymers [i](#)

Unable to reproduce the depositors R factor - this section is therefore empty.