



Full wwPDB X-ray Structure Validation Report ⓘ

Mar 23, 2020 – 02:13 PM EDT

PDB ID : 6R2F
Title : Crystal structure of TEX12 F102A F109E V116A in an alternative conformation
Authors : Duncce, J.M.; Davies, O.R.
Deposited on : 2019-03-17
Resolution : 2.29 Å(reported)

This is a Full wwPDB X-ray Structure Validation Report for a publicly released PDB entry.

We welcome your comments at validation@mail.wwpdb.org

A user guide is available at

<https://www.wwpdb.org/validation/2017/XrayValidationReportHelp>

with specific help available everywhere you see the ⓘ symbol.

The following versions of software and data (see [references ⓘ](#)) were used in the production of this report:

MolProbity : 4.02b-467
Mogul : 1.8.0 (224370), CSD as540be (2019)
Xtriage (Phenix) : 1.13
EDS : 2.8
Percentile statistics : 20171227.v01 (using entries in the PDB archive December 27th 2017)
Refmac : 5.8.0158
CCP4 : 7.0.044 (Gargrove)
Ideal geometry (proteins) : Engh & Huber (2001)
Ideal geometry (DNA, RNA) : Parkinson et al. (1996)
Validation Pipeline (wwPDB-VP) : 2.8

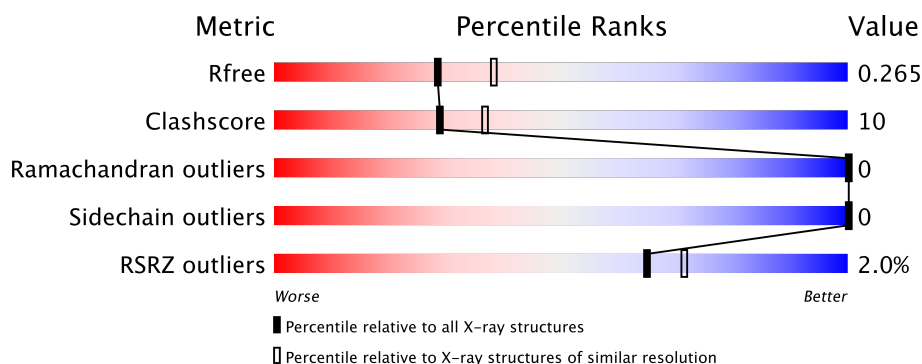
1 Overall quality at a glance

The following experimental techniques were used to determine the structure:

X-RAY DIFFRACTION

The reported resolution of this entry is 2.29 Å.

Percentile scores (ranging between 0-100) for global validation metrics of the entry are shown in the following graphic. The table shows the number of entries on which the scores are based.



Metric	Whole archive (#Entries)	Similar resolution (#Entries, resolution range(Å))
R_{free}	111664	4477 (2.30-2.30)
Clashscore	122126	5072 (2.30-2.30)
Ramachandran outliers	120053	5022 (2.30-2.30)
Sidechain outliers	120020	5021 (2.30-2.30)
RSRZ outliers	108989	4374 (2.30-2.30)

The table below summarises the geometric issues observed across the polymeric chains and their fit to the electron density. The red, orange, yellow and green segments on the lower bar indicate the fraction of residues that contain outliers for ≥ 3 , 2, 1 and 0 types of geometric quality criteria respectively. A grey segment represents the fraction of residues that are not modelled. The numeric value for each fraction is indicated below the corresponding segment, with a dot representing fractions $\leq 5\%$. The upper red bar (where present) indicates the fraction of residues that have poor fit to the electron density. The numeric value is given above the bar.

Mol	Chain	Length	Quality of chain
1	A	79	<div> <div>3%</div> <div>71%10%19%</div> </div>
1	B	79	<div> <div>3%</div> <div>72%9%19%</div> </div>
1	C	79	<div> <div>%</div> <div>67%6%27%</div> </div>
1	D	79	<div> <div></div> <div>63%11%25%</div> </div>

2 Entry composition

There are 4 unique types of molecules in this entry. The entry contains 2226 atoms, of which 0 are hydrogens and 0 are deuteriums.

In the tables below, the ZeroOcc column contains the number of atoms modelled with zero occupancy, the AltConf column contains the number of residues with at least one atom in alternate conformation and the Trace column contains the number of residues modelled with at most 2 atoms.

- Molecule 1 is a protein called Testis-expressed protein 12.

Mol	Chain	Residues	Atoms					ZeroOcc	AltConf	Trace
1	A	64	Total	C	N	O	S	0	0	0
			518	324	87	106	1			
1	B	64	Total	C	N	O	S	0	1	0
			526	330	88	107	1			
1	C	58	Total	C	N	O	S	0	0	0
			471	294	80	96	1			
1	D	59	Total	C	N	O	S	0	0	0
			476	297	81	97	1			

There are 28 discrepancies between the modelled and reference sequences:

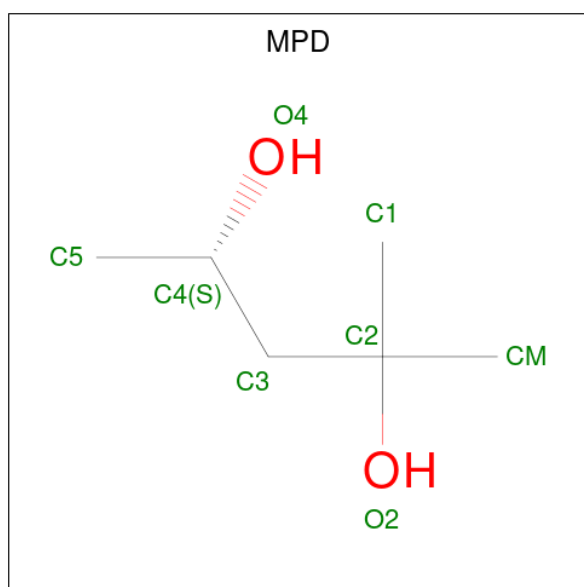
Chain	Residue	Modelled	Actual	Comment	Reference
A	45	GLY	-	expression tag	UNP Q9BXU0
A	46	SER	-	expression tag	UNP Q9BXU0
A	47	MET	-	expression tag	UNP Q9BXU0
A	48	GLY	-	expression tag	UNP Q9BXU0
A	102	ALA	PHE	engineered mutation	UNP Q9BXU0
A	109	GLU	PHE	engineered mutation	UNP Q9BXU0
A	116	ALA	VAL	engineered mutation	UNP Q9BXU0
B	45	GLY	-	expression tag	UNP Q9BXU0
B	46	SER	-	expression tag	UNP Q9BXU0
B	47	MET	-	expression tag	UNP Q9BXU0
B	48	GLY	-	expression tag	UNP Q9BXU0
B	102	ALA	PHE	engineered mutation	UNP Q9BXU0
B	109	GLU	PHE	engineered mutation	UNP Q9BXU0
B	116	ALA	VAL	engineered mutation	UNP Q9BXU0
C	45	GLY	-	expression tag	UNP Q9BXU0
C	46	SER	-	expression tag	UNP Q9BXU0
C	47	MET	-	expression tag	UNP Q9BXU0
C	48	GLY	-	expression tag	UNP Q9BXU0
C	102	ALA	PHE	engineered mutation	UNP Q9BXU0
C	109	GLU	PHE	engineered mutation	UNP Q9BXU0
C	116	ALA	VAL	engineered mutation	UNP Q9BXU0

Continued on next page...

Continued from previous page...

Chain	Residue	Modelled	Actual	Comment	Reference
D	45	GLY	-	expression tag	UNP Q9BXU0
D	46	SER	-	expression tag	UNP Q9BXU0
D	47	MET	-	expression tag	UNP Q9BXU0
D	48	GLY	-	expression tag	UNP Q9BXU0
D	102	ALA	PHE	engineered mutation	UNP Q9BXU0
D	109	GLU	PHE	engineered mutation	UNP Q9BXU0
D	116	ALA	VAL	engineered mutation	UNP Q9BXU0

- Molecule 2 is (4S)-2-METHYL-2,4-PENTANEDIOL (three-letter code: MPD) (formula: $C_6H_{14}O_2$).



Mol	Chain	Residues	Atoms	ZeroOcc	AltConf
2	A	1	Total C O 8 6 2	0	0
2	B	1	Total C O 8 6 2	0	0
2	B	1	Total C O 8 6 2	0	0
2	C	1	Total C O 8 6 2	0	0
2	C	1	Total C O 8 6 2	0	0
2	C	1	Total C O 8 6 2	0	0
2	C	1	Total C O 8 6 2	0	0

Continued on next page...

Continued from previous page...

Mol	Chain	Residues	Atoms			ZeroOcc	AltConf
2	D	1	Total	C	O	0	0
			8	6	2		
2	D	1	Total	C	O	0	0
			8	6	2		
2	D	1	Total	C	O	0	0
			8	6	2		
2	D	1	Total	C	O	0	0
			8	6	2		

- Molecule 3 is CHLORIDE ION (three-letter code: CL) (formula: Cl).

Mol	Chain	Residues	Atoms		ZeroOcc	AltConf
3	A	1	Total	Cl	0	0
			1	1		
3	D	1	Total	Cl	0	0
			1	1		

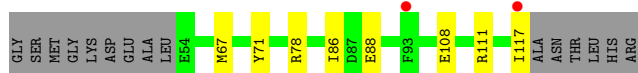
- Molecule 4 is water.

Mol	Chain	Residues	Atoms		ZeroOcc	AltConf
4	A	43	Total	O	0	0
			43	43		
4	B	42	Total	O	0	0
			42	42		
4	C	27	Total	O	0	0
			27	27		
4	D	33	Total	O	0	0
			33	33		

3 Residue-property plots [i](#)

These plots are drawn for all protein, RNA and DNA chains in the entry. The first graphic for a chain summarises the proportions of the various outlier classes displayed in the second graphic. The second graphic shows the sequence view annotated by issues in geometry and electron density. Residues are color-coded according to the number of geometric quality criteria for which they contain at least one outlier: green = 0, yellow = 1, orange = 2 and red = 3 or more. A red dot above a residue indicates a poor fit to the electron density ($RSRZ > 2$). Stretches of 2 or more consecutive residues without any outlier are shown as a green connector. Residues present in the sample, but not in the model, are shown in grey.

- Molecule 1: Testis-expressed protein 12



- Molecule 1: Testis-expressed protein 12



- Molecule 1: Testis-expressed protein 12



- Molecule 1: Testis-expressed protein 12



4 Data and refinement statistics

Property	Value	Source
Space group	I 21 21 21	Depositor
Cell constants a, b, c, α , β , γ	59.86Å 104.51Å 127.51Å 90.00° 90.00° 90.00°	Depositor
Resolution (Å)	40.41 – 2.29 40.41 – 2.29	Depositor EDS
% Data completeness (in resolution range)	99.2 (40.41-2.29) 99.4 (40.41-2.29)	Depositor EDS
R_{merge}	0.13	Depositor
R_{sym}	(Not available)	Depositor
$\langle I/\sigma(I) \rangle$ ¹	2.12 (at 2.29Å)	Xtriage
Refinement program	PHENIX (1.14_3260: ???)	Depositor
R, R_{free}	0.238 , 0.262 0.238 , 0.265	Depositor DCC
R_{free} test set	870 reflections (4.75%)	wwPDB-VP
Wilson B-factor (Å ²)	37.9	Xtriage
Anisotropy	0.287	Xtriage
Bulk solvent k_{sol} (e/Å ³), B_{sol} (Å ²)	0.35 , 65.7	EDS
L-test for twinning ²	$\langle L \rangle = 0.49$, $\langle L^2 \rangle = 0.32$	Xtriage
Estimated twinning fraction	No twinning to report.	Xtriage
F_o, F_c correlation	0.94	EDS
Total number of atoms	2226	wwPDB-VP
Average B, all atoms (Å ²)	54.0	wwPDB-VP

Xtriage's analysis on translational NCS is as follows: *The analyses of the Patterson function reveals a significant off-origin peak that is 56.35 % of the origin peak, indicating pseudo-translational symmetry. The chance of finding a peak of this or larger height randomly in a structure without pseudo-translational symmetry is equal to 2.7732e-05. The detected translational NCS is most likely also responsible for the elevated intensity ratio.*

¹Intensities estimated from amplitudes.

²Theoretical values of $\langle |L| \rangle$, $\langle L^2 \rangle$ for acentric reflections are 0.5, 0.333 respectively for untwinned datasets, and 0.375, 0.2 for perfectly twinned datasets.

5 Model quality [i](#)

5.1 Standard geometry [i](#)

Bond lengths and bond angles in the following residue types are not validated in this section: MPD, CL

The Z score for a bond length (or angle) is the number of standard deviations the observed value is removed from the expected value. A bond length (or angle) with $|Z| > 5$ is considered an outlier worth inspection. RMSZ is the root-mean-square of all Z scores of the bond lengths (or angles).

Mol	Chain	Bond lengths		Bond angles	
		RMSZ	$\# Z > 5$	RMSZ	$\# Z > 5$
1	A	0.36	0/521	0.50	0/699
1	B	0.39	0/528	0.50	0/707
1	C	0.39	0/474	0.51	0/636
1	D	0.37	0/479	0.49	0/643
All	All	0.38	0/2002	0.50	0/2685

There are no bond length outliers.

There are no bond angle outliers.

There are no chirality outliers.

There are no planarity outliers.

5.2 Too-close contacts [i](#)

In the following table, the Non-H and H(model) columns list the number of non-hydrogen atoms and hydrogen atoms in the chain respectively. The H(added) column lists the number of hydrogen atoms added and optimized by MolProbity. The Clashes column lists the number of clashes within the asymmetric unit, whereas Symm-Clashes lists symmetry related clashes.

Mol	Chain	Non-H	H(model)	H(added)	Clashes	Symm-Clashes
1	A	518	0	521	10	0
1	B	526	0	532	16	0
1	C	471	0	471	5	0
1	D	476	0	476	12	0
2	A	8	0	14	3	0
2	B	16	0	28	1	0
2	C	32	0	56	0	0
2	D	32	0	56	5	0
3	A	1	0	0	0	0

Continued on next page...

Continued from previous page...

Mol	Chain	Non-H	H(model)	H(added)	Clashes	Symm-Clashes
3	D	1	0	0	0	0
4	A	43	0	0	5	1
4	B	42	0	0	12	1
4	C	27	0	0	5	2
4	D	33	0	0	5	0
All	All	2226	0	2154	44	2

The all-atom clashscore is defined as the number of clashes found per 1000 atoms (including hydrogen atoms). The all-atom clashscore for this structure is 10.

All (44) close contacts within the same asymmetric unit are listed below, sorted by their clash magnitude.

Atom-1	Atom-2	Interatomic distance (Å)	Clash overlap (Å)
1:B:114:PHE:O	1:B:117[B]:ILE:HG12	1.27	1.30
1:C:87:ASP:OD2	4:C:301:HOH:O	1.68	1.11
1:C:106:LYS:NZ	4:C:303:HOH:O	1.86	1.08
1:A:117:ILE:C	4:A:306:HOH:O	1.90	1.06
1:B:114:PHE:O	1:B:117[B]:ILE:CG1	2.04	1.04
1:D:87:ASP:OD1	4:D:301:HOH:O	1.77	1.03
1:C:65:ASN:ND2	4:C:302:HOH:O	1.85	0.99
1:B:117[A]:ILE:C	4:B:305:HOH:O	2.01	0.98
1:D:87:ASP:CB	4:D:301:HOH:O	2.14	0.95
1:B:117[B]:ILE:C	4:B:305:HOH:O	2.10	0.88
1:D:87:ASP:HB2	4:D:301:HOH:O	1.75	0.85
1:B:115:THR:HG23	4:B:303:HOH:O	1.80	0.81
1:B:88:GLU:OE1	4:B:301:HOH:O	1.96	0.81
1:A:108:GLU:OE1	4:A:301:HOH:O	1.99	0.80
1:B:108:GLU:OE2	4:B:302:HOH:O	2.04	0.74
1:A:88:GLU:OE1	4:A:302:HOH:O	2.06	0.73
1:B:115:THR:OG1	4:B:303:HOH:O	2.06	0.73
1:B:114:PHE:C	1:B:117[B]:ILE:HG12	2.08	0.71
1:D:87:ASP:CG	4:D:301:HOH:O	2.17	0.70
1:D:108:GLU:OE2	1:D:111:ARG:NH2	2.26	0.63
1:B:88:GLU:CD	4:B:301:HOH:O	2.35	0.62
1:C:94:LYS:NZ	4:C:305:HOH:O	2.30	0.61
1:D:76:SER:OG	2:D:201:MPD:HM2	2.01	0.61
1:B:115:THR:CG2	4:B:303:HOH:O	2.41	0.60
1:A:71:TYR:CZ	2:A:201:MPD:HM1	2.37	0.59
1:B:77:GLU:OE1	4:B:304:HOH:O	2.17	0.56
2:D:204:MPD:O2	2:D:204:MPD:O4	2.25	0.53
1:D:71:TYR:CZ	2:D:204:MPD:H32	2.45	0.52

Continued on next page...

Continued from previous page...

Atom-1	Atom-2	Interatomic distance (Å)	Clash overlap (Å)
1:A:78:ARG:NH1	2:A:201:MPD:H51	2.26	0.51
1:A:86:ILE:HD12	1:D:111:ARG:HD3	1.92	0.51
1:B:88:GLU:HG3	4:B:301:HOH:O	2.10	0.50
1:B:115:THR:CB	4:B:303:HOH:O	2.57	0.50
1:D:99:ILE:HD13	2:D:203:MPD:H52	1.93	0.50
4:C:306:HOH:O	1:D:106:LYS:HE3	2.14	0.46
1:C:100:GLU:HB2	2:D:204:MPD:H51	1.97	0.46
1:A:67:MET:HB2	1:A:67:MET:HE3	1.74	0.45
1:D:58:ASN:N	4:D:306:HOH:O	2.49	0.44
1:A:117:ILE:C	4:A:324:HOH:O	2.56	0.44
2:B:201:MPD:HM3	1:D:92:LEU:HB3	2.00	0.43
1:B:108:GLU:OE1	1:B:111:ARG:NH2	2.49	0.43
1:A:117:ILE:HB	4:A:324:HOH:O	2.18	0.43
2:A:201:MPD:H4	2:A:201:MPD:H13	1.62	0.42
1:A:108:GLU:OE2	1:A:111:ARG:NH2	2.50	0.42
1:B:88:GLU:CG	4:B:301:HOH:O	2.63	0.41

All (2) symmetry-related close contacts are listed below. The label for Atom-2 includes the symmetry operator and encoded unit-cell translations to be applied.

Atom-1	Atom-2	Interatomic distance (Å)	Clash overlap (Å)
4:B:317:HOH:O	4:C:317:HOH:O[2_564]	1.71	0.49
4:A:309:HOH:O	4:C:311:HOH:O[6_665]	2.12	0.08

5.3 Torsion angles [i](#)

5.3.1 Protein backbone [i](#)

In the following table, the Percentiles column shows the percent Ramachandran outliers of the chain as a percentile score with respect to all X-ray entries followed by that with respect to entries of similar resolution.

The Analysed column shows the number of residues for which the backbone conformation was analysed, and the total number of residues.

Mol	Chain	Analysed	Favoured	Allowed	Outliers	Percentiles	
1	A	62/79 (78%)	62 (100%)	0	0	100	100
1	B	62/79 (78%)	62 (100%)	0	0	100	100
1	C	56/79 (71%)	56 (100%)	0	0	100	100

Continued on next page...

Continued from previous page...

Mol	Chain	Analysed	Favoured	Allowed	Outliers	Percentiles	
1	D	57/79 (72%)	57 (100%)	0	0	100	100
All	All	237/316 (75%)	237 (100%)	0	0	100	100

There are no Ramachandran outliers to report.

5.3.2 Protein sidechains [i](#)

In the following table, the Percentiles column shows the percent sidechain outliers of the chain as a percentile score with respect to all X-ray entries followed by that with respect to entries of similar resolution.

The Analysed column shows the number of residues for which the sidechain conformation was analysed, and the total number of residues.

Mol	Chain	Analysed	Rotameric	Outliers	Percentiles	
1	A	56/67 (84%)	56 (100%)	0	100	100
1	B	57/67 (85%)	57 (100%)	0	100	100
1	C	51/67 (76%)	51 (100%)	0	100	100
1	D	51/67 (76%)	51 (100%)	0	100	100
All	All	215/268 (80%)	215 (100%)	0	100	100

There are no protein residues with a non-rotameric sidechain to report.

Some sidechains can be flipped to improve hydrogen bonding and reduce clashes. There are no such sidechains identified.

5.3.3 RNA [i](#)

There are no RNA molecules in this entry.

5.4 Non-standard residues in protein, DNA, RNA chains [i](#)

There are no non-standard protein/DNA/RNA residues in this entry.

5.5 Carbohydrates [i](#)

There are no carbohydrates in this entry.

5.6 Ligand geometry

Of 13 ligands modelled in this entry, 2 are monoatomic - leaving 11 for Mogul analysis.

In the following table, the Counts columns list the number of bonds (or angles) for which Mogul statistics could be retrieved, the number of bonds (or angles) that are observed in the model and the number of bonds (or angles) that are defined in the Chemical Component Dictionary. The Link column lists molecule types, if any, to which the group is linked. The Z score for a bond length (or angle) is the number of standard deviations the observed value is removed from the expected value. A bond length (or angle) with $|Z| > 2$ is considered an outlier worth inspection. RMSZ is the root-mean-square of all Z scores of the bond lengths (or angles).

Mol	Type	Chain	Res	Link	Bond lengths			Bond angles		
					Counts	RMSZ	# Z > 2	Counts	RMSZ	# Z > 2
2	MPD	A	201	-	7,7,7	0.38	0	9,10,10	1.01	1 (11%)
2	MPD	B	201	-	7,7,7	0.23	0	9,10,10	0.47	0
2	MPD	B	202	-	7,7,7	0.27	0	9,10,10	0.39	0
2	MPD	C	201	-	7,7,7	0.27	0	9,10,10	0.26	0
2	MPD	C	202	-	7,7,7	0.24	0	9,10,10	0.30	0
2	MPD	C	203	-	7,7,7	0.27	0	9,10,10	0.64	0
2	MPD	C	204	-	7,7,7	0.49	0	9,10,10	0.81	1 (11%)
2	MPD	D	201	-	7,7,7	0.32	0	9,10,10	0.40	0
2	MPD	D	202	-	7,7,7	0.29	0	9,10,10	0.36	0
2	MPD	D	203	-	7,7,7	0.57	0	9,10,10	1.17	1 (11%)
2	MPD	D	204	-	7,7,7	0.30	0	9,10,10	0.29	0

In the following table, the Chirals column lists the number of chiral outliers, the number of chiral centers analysed, the number of these observed in the model and the number defined in the Chemical Component Dictionary. Similar counts are reported in the Torsion and Rings columns. '-' means no outliers of that kind were identified.

Mol	Type	Chain	Res	Link	Chirals	Torsions	Rings
2	MPD	A	201	-	-	2/5/5/5	-
2	MPD	B	201	-	-	0/5/5/5	-
2	MPD	B	202	-	-	1/5/5/5	-
2	MPD	C	201	-	-	5/5/5/5	-
2	MPD	C	202	-	-	0/5/5/5	-
2	MPD	C	203	-	-	0/5/5/5	-
2	MPD	C	204	-	-	2/5/5/5	-
2	MPD	D	201	-	-	3/5/5/5	-
2	MPD	D	202	-	-	3/5/5/5	-
2	MPD	D	203	-	-	2/5/5/5	-
2	MPD	D	204	-	-	3/5/5/5	-

There are no bond length outliers.

All (3) bond angle outliers are listed below:

Mol	Chain	Res	Type	Atoms	Z	Observed($^{\circ}$)	Ideal($^{\circ}$)
2	D	203	MPD	O2-C2-C1	-2.49	100.01	108.06
2	A	201	MPD	CM-C2-C1	-2.20	105.94	110.57
2	C	204	MPD	CM-C2-C1	-2.03	106.30	110.57

There are no chirality outliers.

All (21) torsion outliers are listed below:

Mol	Chain	Res	Type	Atoms
2	C	201	MPD	C2-C3-C4-O4
2	D	201	MPD	CM-C2-C3-C4
2	C	204	MPD	CM-C2-C3-C4
2	C	201	MPD	O2-C2-C3-C4
2	D	201	MPD	O2-C2-C3-C4
2	D	202	MPD	O2-C2-C3-C4
2	A	201	MPD	C2-C3-C4-C5
2	C	201	MPD	C1-C2-C3-C4
2	C	201	MPD	CM-C2-C3-C4
2	D	204	MPD	C1-C2-C3-C4
2	D	201	MPD	C1-C2-C3-C4
2	D	202	MPD	C1-C2-C3-C4
2	D	202	MPD	CM-C2-C3-C4
2	C	204	MPD	O2-C2-C3-C4
2	C	201	MPD	C2-C3-C4-C5
2	D	204	MPD	C2-C3-C4-C5
2	B	202	MPD	C2-C3-C4-C5
2	D	203	MPD	C2-C3-C4-C5
2	D	204	MPD	C2-C3-C4-O4
2	D	203	MPD	C2-C3-C4-O4
2	A	201	MPD	C2-C3-C4-O4

There are no ring outliers.

5 monomers are involved in 9 short contacts:

Mol	Chain	Res	Type	Clashes	Symm-Clashes
2	A	201	MPD	3	0
2	B	201	MPD	1	0
2	D	201	MPD	1	0
2	D	203	MPD	1	0
2	D	204	MPD	3	0

5.7 Other polymers [i](#)

There are no such residues in this entry.

5.8 Polymer linkage issues [i](#)

There are no chain breaks in this entry.

6 Fit of model and data [i](#)

6.1 Protein, DNA and RNA chains [i](#)

In the following table, the column labelled ‘#RSRZ> 2’ contains the number (and percentage) of RSRZ outliers, followed by percent RSRZ outliers for the chain as percentile scores relative to all X-ray entries and entries of similar resolution. The OWAB column contains the minimum, median, 95th percentile and maximum values of the occupancy-weighted average B-factor per residue. The column labelled ‘Q< 0.9’ lists the number of (and percentage) of residues with an average occupancy less than 0.9.

Mol	Chain	Analysed	<RSRZ>	#RSRZ>2	OWAB(Å ²)	Q<0.9
1	A	64/79 (81%)	0.17	2 (3%) 49 56	35, 51, 73, 93	0
1	B	64/79 (81%)	0.16	2 (3%) 49 56	36, 51, 70, 94	0
1	C	58/79 (73%)	0.13	1 (1%) 70 76	32, 54, 79, 106	0
1	D	59/79 (74%)	0.07	0 100 100	36, 47, 78, 108	0
All	All	245/316 (77%)	0.14	5 (2%) 65 71	32, 51, 77, 108	0

All (5) RSRZ outliers are listed below:

Mol	Chain	Res	Type	RSRZ
1	A	93	PHE	4.3
1	B	117[A]	ILE	4.0
1	C	58	ASN	2.5
1	B	93	PHE	2.4
1	A	117	ILE	2.3

6.2 Non-standard residues in protein, DNA, RNA chains [i](#)

There are no non-standard protein/DNA/RNA residues in this entry.

6.3 Carbohydrates [i](#)

There are no carbohydrates in this entry.

6.4 Ligands [i](#)

In the following table, the Atoms column lists the number of modelled atoms in the group and the number defined in the chemical component dictionary. The B-factors column lists the minimum,

median, 95th percentile and maximum values of B factors of atoms in the group. The column labelled 'Q< 0.9' lists the number of atoms with occupancy less than 0.9.

Mol	Type	Chain	Res	Atoms	RSCC	RSR	B-factors(Å ²)	Q<0.9
2	MPD	D	203	8/8	0.78	0.39	67,69,74,77	8
2	MPD	C	202	8/8	0.80	0.25	64,68,70,75	8
3	CL	D	205	1/1	0.89	0.19	68,68,68,68	0
2	MPD	A	201	8/8	0.89	0.33	51,57,61,62	8
2	MPD	B	202	8/8	0.90	0.32	87,92,96,100	0
2	MPD	D	204	8/8	0.90	0.17	56,63,65,69	0
2	MPD	C	203	8/8	0.91	0.29	58,62,65,70	0
2	MPD	C	204	8/8	0.91	0.22	29,44,51,57	0
2	MPD	C	201	8/8	0.92	0.16	62,65,66,71	0
3	CL	A	202	1/1	0.93	0.12	63,63,63,63	1
2	MPD	D	201	8/8	0.93	0.24	30,36,40,51	0
2	MPD	B	201	8/8	0.94	0.15	36,50,55,60	0
2	MPD	D	202	8/8	0.96	0.14	43,48,51,52	0

6.5 Other polymers [i](#)

There are no such residues in this entry.