



wwPDB X-ray Structure Validation Summary Report ⓘ

Mar 8, 2018 – 08:54 pm GMT

PDB ID : 4R3U
Title : Crystal structure of 2-Hydroxyisobutyryl-CoA Mutase
Authors : Zahn, M.; Kurteva-Yaneva, N.; Rohwerder, T.; Straeter, N.
Deposited on : 2014-08-18
Resolution : 2.50 Å(reported)

This is a wwPDB X-ray Structure Validation Summary Report for a publicly released PDB entry.

We welcome your comments at validation@mail.wwpdb.org

A user guide is available at

<https://www.wwpdb.org/validation/2017/XrayValidationReportHelp>

with specific help available everywhere you see the ⓘ symbol.

The following versions of software and data (see [references ⓘ](#)) were used in the production of this report:

MolProbity : 4.02b-467
Mogul : 1.7.3 (157068), CSD as539be (2018)
Xtriage (Phenix) : 1.13
EDS : trunk30967
Percentile statistics : 20171227.v01 (using entries in the PDB archive December 27th 2017)
Refmac : 5.8.0158
CCP4 : 7.0 (Gargrove)
Ideal geometry (proteins) : Engh & Huber (2001)
Ideal geometry (DNA, RNA) : Parkinson et al. (1996)
Validation Pipeline (wwPDB-VP) : trunk30967

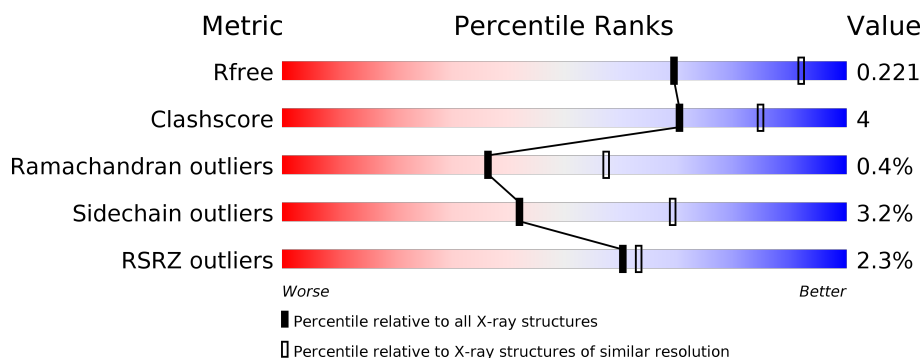
1 Overall quality at a glance

The following experimental techniques were used to determine the structure:

X-RAY DIFFRACTION

The reported resolution of this entry is 2.50 Å.

Percentile scores (ranging between 0-100) for global validation metrics of the entry are shown in the following graphic. The table shows the number of entries on which the scores are based.



Metric	Whole archive (#Entries)	Similar resolution (#Entries, resolution range(Å))
R_{free}	111664	4155 (2.50-2.50)
Clashscore	122126	4827 (2.50-2.50)
Ramachandran outliers	120053	4735 (2.50-2.50)
Sidechain outliers	120020	4737 (2.50-2.50)
RSRZ outliers	108989	4058 (2.50-2.50)

The table below summarises the geometric issues observed across the polymeric chains and their fit to the electron density. The red, orange, yellow and green segments on the lower bar indicate the fraction of residues that contain outliers for ≥ 3 , 2, 1 and 0 types of geometric quality criteria. A grey segment represents the fraction of residues that are not modelled. The numeric value for each fraction is indicated below the corresponding segment, with a dot representing fractions $\leq 5\%$. The upper red bar (where present) indicates the fraction of residues that have poor fit to the electron density. The numeric value is given above the bar.

Mol	Chain	Length	Quality of chain
1	A	584	<div> <div style="width: 100%; height: 10px; background: linear-gradient(to right, red 1%, orange 1%, yellow 87%, green 87%, grey 95%);"></div> <div style="display: flex; justify-content: space-between; width: 100%;"> % 87% 8% 5% </div> </div>
1	B	584	<div> <div style="width: 100%; height: 10px; background: linear-gradient(to right, red 2%, orange 2%, yellow 84%, green 84%, grey 95%);"></div> <div style="display: flex; justify-content: space-between; width: 100%;"> 2% 84% 11% 5% </div> </div>
2	C	158	<div> <div style="width: 100%; height: 10px; background: linear-gradient(to right, red 1%, orange 1%, yellow 72%, green 72%, grey 95%);"></div> <div style="display: flex; justify-content: space-between; width: 100%;"> % 72% 10% 17% </div> </div>
2	D	158	<div> <div style="width: 100%; height: 10px; background: linear-gradient(to right, red 9%, orange 9%, yellow 71%, green 71%, grey 95%);"></div> <div style="display: flex; justify-content: space-between; width: 100%;"> 9% 71% 11% 18% </div> </div>

2 Entry composition

There are 7 unique types of molecules in this entry. The entry contains 11404 atoms, of which 0 are hydrogens and 0 are deuteriums.

In the tables below, the ZeroOcc column contains the number of atoms modelled with zero occupancy, the AltConf column contains the number of residues with at least one atom in alternate conformation and the Trace column contains the number of residues modelled with at most 2 atoms.

- Molecule 1 is a protein called 2-hydroxyisobutyryl-CoA mutase large subunit.

Mol	Chain	Residues	Atoms					ZeroOcc	AltConf	Trace
1	A	557	Total	C	N	O	S	0	0	0
			4423	2804	755	845	19			
1	B	555	Total	C	N	O	S	0	0	0
			4406	2795	753	839	19			

There are 44 discrepancies between the modelled and reference sequences:

Chain	Residue	Modelled	Actual	Comment	Reference
A	-10	MET	-	EXPRESSION TAG	UNP I3VE77
A	-9	ALA	-	EXPRESSION TAG	UNP I3VE77
A	-8	SER	-	EXPRESSION TAG	UNP I3VE77
A	-7	HIS	-	EXPRESSION TAG	UNP I3VE77
A	-6	HIS	-	EXPRESSION TAG	UNP I3VE77
A	-5	HIS	-	EXPRESSION TAG	UNP I3VE77
A	-4	HIS	-	EXPRESSION TAG	UNP I3VE77
A	-3	HIS	-	EXPRESSION TAG	UNP I3VE77
A	-2	HIS	-	EXPRESSION TAG	UNP I3VE77
A	-1	SER	-	EXPRESSION TAG	UNP I3VE77
A	0	GLY	-	EXPRESSION TAG	UNP I3VE77
A	563	GLY	-	EXPRESSION TAG	UNP I3VE77
A	564	SER	-	EXPRESSION TAG	UNP I3VE77
A	565	ALA	-	EXPRESSION TAG	UNP I3VE77
A	566	TRP	-	EXPRESSION TAG	UNP I3VE77
A	567	SER	-	EXPRESSION TAG	UNP I3VE77
A	568	HIS	-	EXPRESSION TAG	UNP I3VE77
A	569	PRO	-	EXPRESSION TAG	UNP I3VE77
A	570	GLN	-	EXPRESSION TAG	UNP I3VE77
A	571	PHE	-	EXPRESSION TAG	UNP I3VE77
A	572	GLU	-	EXPRESSION TAG	UNP I3VE77
A	573	LYS	-	EXPRESSION TAG	UNP I3VE77
B	-10	MET	-	EXPRESSION TAG	UNP I3VE77
B	-9	ALA	-	EXPRESSION TAG	UNP I3VE77
B	-8	SER	-	EXPRESSION TAG	UNP I3VE77

Continued on next page...

Continued from previous page...

Chain	Residue	Modelled	Actual	Comment	Reference
B	-7	HIS	-	EXPRESSION TAG	UNP I3VE77
B	-6	HIS	-	EXPRESSION TAG	UNP I3VE77
B	-5	HIS	-	EXPRESSION TAG	UNP I3VE77
B	-4	HIS	-	EXPRESSION TAG	UNP I3VE77
B	-3	HIS	-	EXPRESSION TAG	UNP I3VE77
B	-2	HIS	-	EXPRESSION TAG	UNP I3VE77
B	-1	SER	-	EXPRESSION TAG	UNP I3VE77
B	0	GLY	-	EXPRESSION TAG	UNP I3VE77
B	563	GLY	-	EXPRESSION TAG	UNP I3VE77
B	564	SER	-	EXPRESSION TAG	UNP I3VE77
B	565	ALA	-	EXPRESSION TAG	UNP I3VE77
B	566	TRP	-	EXPRESSION TAG	UNP I3VE77
B	567	SER	-	EXPRESSION TAG	UNP I3VE77
B	568	HIS	-	EXPRESSION TAG	UNP I3VE77
B	569	PRO	-	EXPRESSION TAG	UNP I3VE77
B	570	GLN	-	EXPRESSION TAG	UNP I3VE77
B	571	PHE	-	EXPRESSION TAG	UNP I3VE77
B	572	GLU	-	EXPRESSION TAG	UNP I3VE77
B	573	LYS	-	EXPRESSION TAG	UNP I3VE77

- Molecule 2 is a protein called 2-hydroxyisobutyryl-CoA mutase small subunit.

Mol	Chain	Residues	Atoms					ZeroOcc	AltConf	Trace
2	C	131	Total	C	N	O	S	0	0	0
			982	620	176	184	2			
2	D	129	Total	C	N	O	S	0	0	0
			962	609	170	181	2			

There are 44 discrepancies between the modelled and reference sequences:

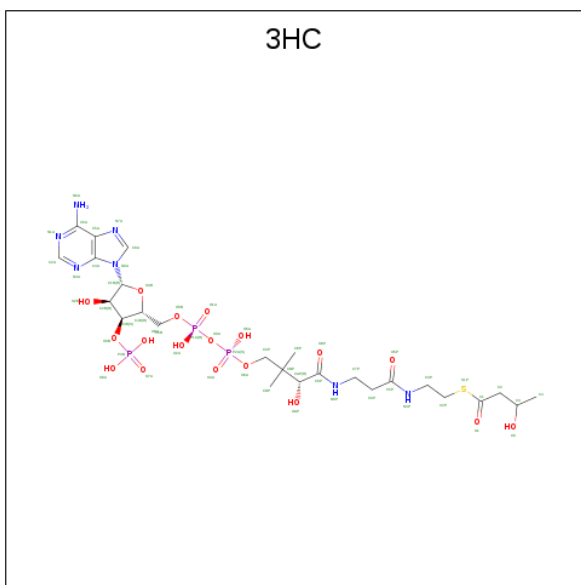
Chain	Residue	Modelled	Actual	Comment	Reference
C	-10	MET	-	EXPRESSION TAG	UNP I3VE74
C	-9	ALA	-	EXPRESSION TAG	UNP I3VE74
C	-8	SER	-	EXPRESSION TAG	UNP I3VE74
C	-7	HIS	-	EXPRESSION TAG	UNP I3VE74
C	-6	HIS	-	EXPRESSION TAG	UNP I3VE74
C	-5	HIS	-	EXPRESSION TAG	UNP I3VE74
C	-4	HIS	-	EXPRESSION TAG	UNP I3VE74
C	-3	HIS	-	EXPRESSION TAG	UNP I3VE74
C	-2	HIS	-	EXPRESSION TAG	UNP I3VE74
C	-1	SER	-	EXPRESSION TAG	UNP I3VE74
C	0	GLY	-	EXPRESSION TAG	UNP I3VE74

Continued on next page...

Continued from previous page...

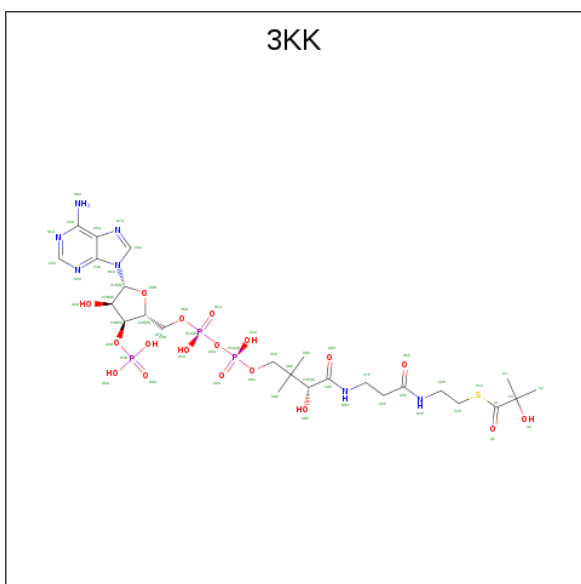
Chain	Residue	Modelled	Actual	Comment	Reference
C	137	GLY	-	EXPRESSION TAG	UNP I3VE74
C	138	SER	-	EXPRESSION TAG	UNP I3VE74
C	139	ALA	-	EXPRESSION TAG	UNP I3VE74
C	140	TRP	-	EXPRESSION TAG	UNP I3VE74
C	141	SER	-	EXPRESSION TAG	UNP I3VE74
C	142	HIS	-	EXPRESSION TAG	UNP I3VE74
C	143	PRO	-	EXPRESSION TAG	UNP I3VE74
C	144	GLN	-	EXPRESSION TAG	UNP I3VE74
C	145	PHE	-	EXPRESSION TAG	UNP I3VE74
C	146	GLU	-	EXPRESSION TAG	UNP I3VE74
C	147	LYS	-	EXPRESSION TAG	UNP I3VE74
D	-10	MET	-	EXPRESSION TAG	UNP I3VE74
D	-9	ALA	-	EXPRESSION TAG	UNP I3VE74
D	-8	SER	-	EXPRESSION TAG	UNP I3VE74
D	-7	HIS	-	EXPRESSION TAG	UNP I3VE74
D	-6	HIS	-	EXPRESSION TAG	UNP I3VE74
D	-5	HIS	-	EXPRESSION TAG	UNP I3VE74
D	-4	HIS	-	EXPRESSION TAG	UNP I3VE74
D	-3	HIS	-	EXPRESSION TAG	UNP I3VE74
D	-2	HIS	-	EXPRESSION TAG	UNP I3VE74
D	-1	SER	-	EXPRESSION TAG	UNP I3VE74
D	0	GLY	-	EXPRESSION TAG	UNP I3VE74
D	137	GLY	-	EXPRESSION TAG	UNP I3VE74
D	138	SER	-	EXPRESSION TAG	UNP I3VE74
D	139	ALA	-	EXPRESSION TAG	UNP I3VE74
D	140	TRP	-	EXPRESSION TAG	UNP I3VE74
D	141	SER	-	EXPRESSION TAG	UNP I3VE74
D	142	HIS	-	EXPRESSION TAG	UNP I3VE74
D	143	PRO	-	EXPRESSION TAG	UNP I3VE74
D	144	GLN	-	EXPRESSION TAG	UNP I3VE74
D	145	PHE	-	EXPRESSION TAG	UNP I3VE74
D	146	GLU	-	EXPRESSION TAG	UNP I3VE74
D	147	LYS	-	EXPRESSION TAG	UNP I3VE74

- Molecule 3 is 3-HYDROXYBUTANOYL-COENZYME A (three-letter code: 3HC) (formula: C₂₅H₄₂N₇O₁₈P₃S).



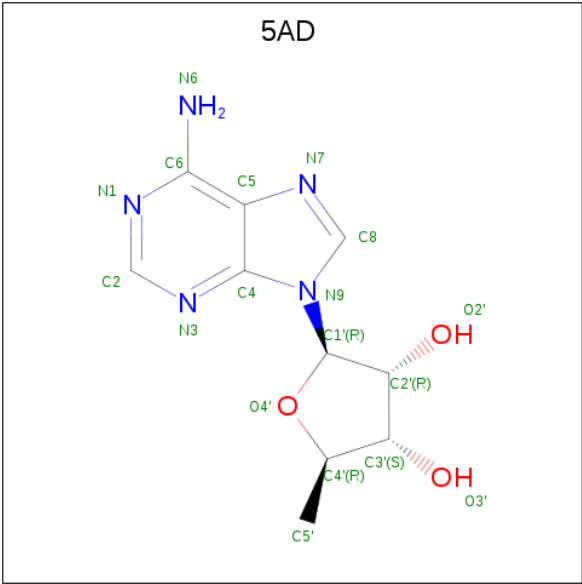
Mol	Chain	Residues	Atoms						ZeroOcc	AltConf
3	A	1	Total	C	N	O	P	S	0	1
			54	25	7	18	3	1		
3	B	1	Total	C	N	O	P	S	0	1
			54	25	7	18	3	1		

- Molecule 4 is S-{(3R,5R,9R)-1-[(2R,3S,4R,5R)-5-(6-amino-9H-purin-9-yl)-4-hydroxy-3-(phosphonoxy)tetrahydrofuran-2-yl]-3,5,9-trihydroxy-8,8-dimethyl-3,5-dioxido-10,14-dioxo-2,4,6-trioxa-11,15-diaza-3lambda 5 ,5lambda 5 -diphosphaheptadecan-17-yl} 2-hydroxy-2-methylpropanethioate (three-letter code: 3KK) (formula: C₂₅H₄₂N₇O₁₈P₃S).



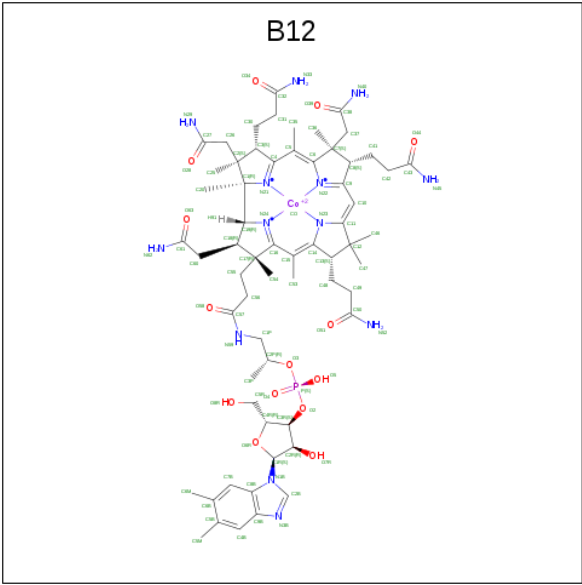
Mol	Chain	Residues	Atoms						ZeroOcc	AltConf
4	A	1	Total	C	N	O	P	S	0	1
			54	25	7	18	3	1		
4	B	1	Total	C	N	O	P	S	0	1
			54	25	7	18	3	1		

- Molecule 5 is 5'-DEOXYADENOSINE (three-letter code: 5AD) (formula: C₁₀H₁₃N₅O₃).



Mol	Chain	Residues	Atoms				ZeroOcc	AltConf
5	A	1	Total	C	N	O	0	1
			18	10	5	3		

- Molecule 6 is COBALAMIN (three-letter code: B12) (formula: C₆₂H₈₉CoN₁₃O₁₄P).



Mol	Chain	Residues	Atoms						ZeroOcc	AltConf
6	C	1	Total 91	C 62	Co 1	N 13	O 14	P 1	0	0
6	D	1	Total 91	C 62	Co 1	N 13	O 14	P 1	0	0

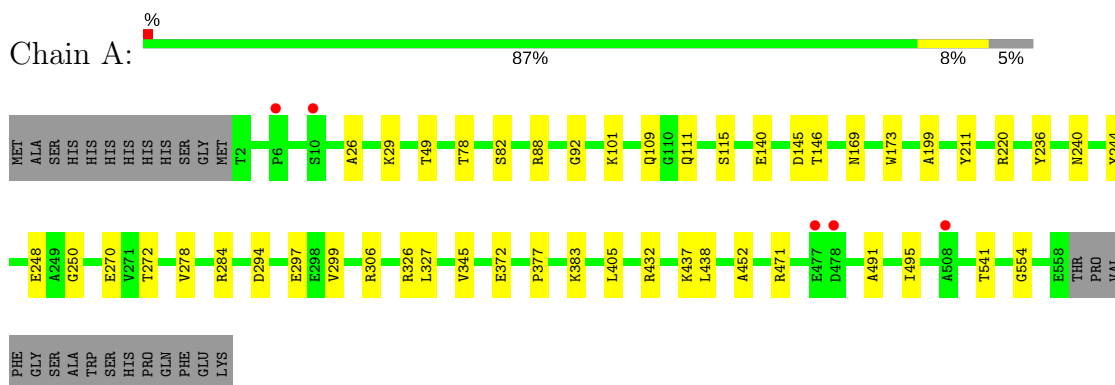
- Molecule 7 is water.

Mol	Chain	Residues	Atoms		ZeroOcc	AltConf
7	A	158	Total 158	O 158	0	5
7	B	16	Total 16	O 16	0	0
7	C	38	Total 38	O 38	0	1
7	D	3	Total 3	O 3	0	0

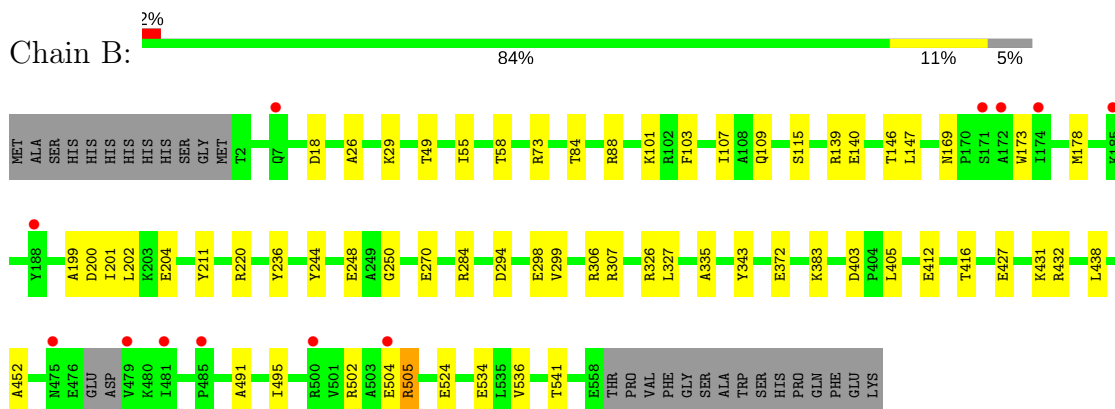
3 Residue-property plots [i](#)

These plots are drawn for all protein, RNA and DNA chains in the entry. The first graphic for a chain summarises the proportions of the various outlier classes displayed in the second graphic. The second graphic shows the sequence view annotated by issues in geometry and electron density. Residues are color-coded according to the number of geometric quality criteria for which they contain at least one outlier: green = 0, yellow = 1, orange = 2 and red = 3 or more. A red dot above a residue indicates a poor fit to the electron density ($RSRZ > 2$). Stretches of 2 or more consecutive residues without any outlier are shown as a green connector. Residues present in the sample, but not in the model, are shown in grey.

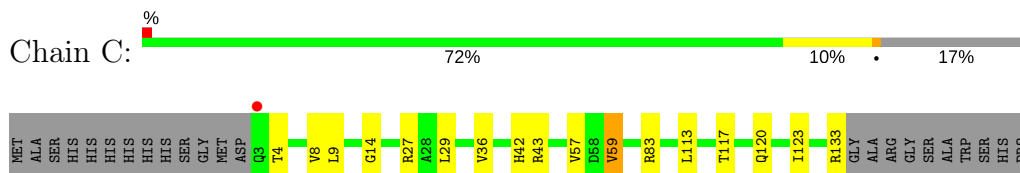
- Molecule 1: 2-hydroxyisobutyryl-CoA mutase large subunit



- Molecule 1: 2-hydroxyisobutyryl-CoA mutase large subunit

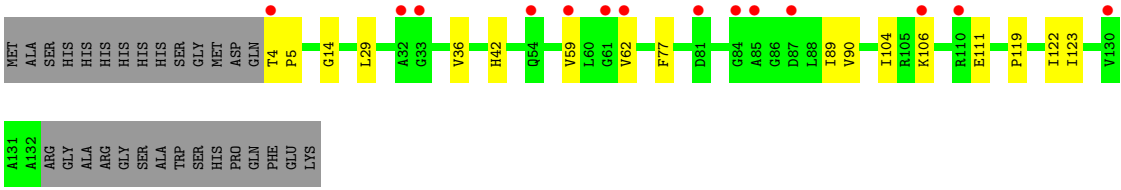


- Molecule 2: 2-hydroxyisobutyryl-CoA mutase small subunit



- Molecule 2: 2-hydroxyisobutyryl-CoA mutase small subunit





4 Data and refinement statistics

Property	Value	Source
Space group	C 1 2 1	Depositor
Cell constants a, b, c, α , β , γ	69.03Å 119.56Å 173.94Å 90.00° 91.23° 90.00°	Depositor
Resolution (Å)	24.63 – 2.50 24.63 – 2.50	Depositor EDS
% Data completeness (in resolution range)	100.0 (24.63-2.50) 100.0 (24.63-2.50)	Depositor EDS
R_{merge}	(Not available)	Depositor
R_{sym}	(Not available)	Depositor
$\langle I/\sigma(I) \rangle$ ¹	3.40 (at 2.50Å)	Xtriage
Refinement program	BUSTER 2.10.0	Depositor
R, R_{free}	0.168 , 0.217 0.172 , 0.221	Depositor DCC
R_{free} test set	1519 reflections (3.11%)	wwPDB-VP
Wilson B-factor (Å ²)	31.0	Xtriage
Anisotropy	0.857	Xtriage
Bulk solvent k_{sol} (e/Å ³), B_{sol} (Å ²)	0.31 , 52.2	EDS
L-test for twinning ²	$\langle L \rangle = 0.48$, $\langle L^2 \rangle = 0.32$	Xtriage
Estimated twinning fraction	0.020 for -1/2*h+1/2*k,3/2*h+1/2*k,-l 0.017 for -1/2*h-1/2*k,-3/2*h+1/2*k,-l 0.010 for 1/2*h+1/2*k,3/2*h-1/2*k,-l 0.011 for 1/2*h-1/2*k,-3/2*h-1/2*k,-l 0.028 for -h,-k,l	Xtriage
F_o, F_c correlation	0.95	EDS
Total number of atoms	11404	wwPDB-VP
Average B, all atoms (Å ²)	48.0	wwPDB-VP

Xtriage's analysis on translational NCS is as follows: *The largest off-origin peak in the Patterson function is 4.32% of the height of the origin peak. No significant pseudotranslation is detected.*

¹Intensities estimated from amplitudes.

²Theoretical values of $\langle |L| \rangle$, $\langle L^2 \rangle$ for acentric reflections are 0.5, 0.333 respectively for untwinned datasets, and 0.375, 0.2 for perfectly twinned datasets.

5 Model quality [i](#)

5.1 Standard geometry [i](#)

Bond lengths and bond angles in the following residue types are not validated in this section: 3HC, B12, 5AD, 3KK

The Z score for a bond length (or angle) is the number of standard deviations the observed value is removed from the expected value. A bond length (or angle) with $|Z| > 5$ is considered an outlier worth inspection. RMSZ is the root-mean-square of all Z scores of the bond lengths (or angles).

Mol	Chain	Bond lengths		Bond angles	
		RMSZ	$\# Z > 5$	RMSZ	$\# Z > 5$
1	A	0.54	0/4511	0.71	0/6100
1	B	0.48	0/4493	0.69	0/6074
2	C	0.56	0/992	0.70	0/1346
2	D	0.47	0/972	0.72	0/1320
All	All	0.51	0/10968	0.70	0/14840

There are no bond length outliers.

There are no bond angle outliers.

There are no chirality outliers.

There are no planarity outliers.

5.2 Too-close contacts [i](#)

In the following table, the Non-H and H(model) columns list the number of non-hydrogen atoms and hydrogen atoms in the chain respectively. The H(added) column lists the number of hydrogen atoms added and optimized by MolProbity. The Clashes column lists the number of clashes within the asymmetric unit, whereas Symm-Clashes lists symmetry related clashes.

Mol	Chain	Non-H	H(model)	H(added)	Clashes	Symm-Clashes
1	A	4423	0	4391	28	0
1	B	4406	0	4380	31	0
2	C	982	0	1034	8	0
2	D	962	0	1013	9	0
3	A	54	0	38	4	0
3	B	54	0	38	0	0
4	A	54	0	38	3	0
4	B	54	0	38	0	0
5	A	18	0	13	6	0

Continued on next page...

Continued from previous page...

Mol	Chain	Non-H	H(model)	H(added)	Clashes	Symm-Clashes
6	C	91	0	88	9	0
6	D	91	0	88	7	0
7	A	158	0	0	3	0
7	B	16	0	0	1	0
7	C	38	0	0	0	0
7	D	3	0	0	0	0
All	All	11404	0	11159	88	0

The all-atom clashscore is defined as the number of clashes found per 1000 atoms (including hydrogen atoms). The all-atom clashscore for this structure is 4.

The worst 5 of 88 close contacts within the same asymmetric unit are listed below, sorted by their clash magnitude.

Atom-1	Atom-2	Interatomic distance (Å)	Clash overlap (Å)
1:B:307:ARG:HH22	1:B:416:THR:HG22	1.32	0.95
1:B:178:MET:HG2	1:B:536:VAL:HG21	1.49	0.94
1:B:178:MET:CG	1:B:536:VAL:HG21	2.01	0.90
6:C:800:B12:H531	6:C:800:B12:H552	1.60	0.83
1:A:78:THR:HG21	7:A:939:HOH:O	1.82	0.79

There are no symmetry-related clashes.

5.3 Torsion angles ⓘ

5.3.1 Protein backbone ⓘ

In the following table, the Percentiles column shows the percent Ramachandran outliers of the chain as a percentile score with respect to all X-ray entries followed by that with respect to entries of similar resolution.

The Analysed column shows the number of residues for which the backbone conformation was analysed, and the total number of residues.

Mol	Chain	Analysed	Favoured	Allowed	Outliers	Percentiles	
1	A	555/584 (95%)	533 (96%)	20 (4%)	2 (0%)	36	57
1	B	551/584 (94%)	531 (96%)	16 (3%)	4 (1%)	24	42
2	C	129/158 (82%)	125 (97%)	4 (3%)	0	100	100
2	D	127/158 (80%)	123 (97%)	4 (3%)	0	100	100
All	All	1362/1484 (92%)	1312 (96%)	44 (3%)	6 (0%)	36	57

5 of 6 Ramachandran outliers are listed below:

Mol	Chain	Res	Type
1	A	169	ASN
1	B	169	ASN
1	A	199	ALA
1	B	199	ALA
1	B	343	TYR

5.3.2 Protein sidechains ⓘ

In the following table, the Percentiles column shows the percent sidechain outliers of the chain as a percentile score with respect to all X-ray entries followed by that with respect to entries of similar resolution.

The Analysed column shows the number of residues for which the sidechain conformation was analysed, and the total number of residues.

Mol	Chain	Analysed	Rotameric	Outliers	Percentiles	
1	A	467/490 (95%)	456 (98%)	11 (2%)	52	78
1	B	465/490 (95%)	449 (97%)	16 (3%)	40	67
2	C	106/127 (84%)	101 (95%)	5 (5%)	29	52
2	D	104/127 (82%)	100 (96%)	4 (4%)	36	62
All	All	1142/1234 (92%)	1106 (97%)	36 (3%)	42	69

5 of 36 residues with a non-rotameric sidechain are listed below:

Mol	Chain	Res	Type
1	B	173	TRP
1	B	270	GLU
2	D	104	ILE
1	B	211	TYR
1	B	326	ARG

Some sidechains can be flipped to improve hydrogen bonding and reduce clashes. All (2) such sidechains are listed below:

Mol	Chain	Res	Type
1	A	240	ASN
1	B	240	ASN

5.3.3 RNA ⓘ

There are no RNA molecules in this entry.

5.4 Non-standard residues in protein, DNA, RNA chains ⓘ

There are no non-standard protein/DNA/RNA residues in this entry.

5.5 Carbohydrates ⓘ

There are no carbohydrates in this entry.

5.6 Ligand geometry ⓘ

7 ligands are modelled in this entry.

In the following table, the Counts columns list the number of bonds (or angles) for which Mogul statistics could be retrieved, the number of bonds (or angles) that are observed in the model and the number of bonds (or angles) that are defined in the Chemical Component Dictionary. The Link column lists molecule types, if any, to which the group is linked. The Z score for a bond length (or angle) is the number of standard deviations the observed value is removed from the expected value. A bond length (or angle) with $|Z| > 2$ is considered an outlier worth inspection. RMSZ is the root-mean-square of all Z scores of the bond lengths (or angles).

Mol	Type	Chain	Res	Link	Bond lengths			Bond angles		
					Counts	RMSZ	$\# Z > 2$	Counts	RMSZ	$\# Z > 2$
3	3HC	A	801[A]	-	47,56,56	2.06	5 (10%)	59,83,83	2.76	6 (10%)
4	3KK	A	802[B]	-	47,56,56	1.56	6 (12%)	58,85,85	2.20	6 (10%)
5	5AD	A	803[C]	-	17,20,20	2.07	5 (29%)	12,30,30	3.92	4 (33%)
3	3HC	B	801[A]	-	47,56,56	2.04	5 (10%)	59,83,83	2.74	6 (10%)
4	3KK	B	802[B]	-	47,56,56	1.52	6 (12%)	58,85,85	2.20	4 (6%)
6	B12	C	800	2	82,101,101	0.70	2 (2%)	100,166,166	1.12	9 (9%)
6	B12	D	800	2	82,101,101	0.71	3 (3%)	100,166,166	1.14	11 (11%)

In the following table, the Chirals column lists the number of chiral outliers, the number of chiral centers analysed, the number of these observed in the model and the number defined in the Chemical Component Dictionary. Similar counts are reported in the Torsion and Rings columns. '-' means no outliers of that kind were identified.

Mol	Type	Chain	Res	Link	Chirals	Torsions	Rings
3	3HC	A	801[A]	-	-	0/51/71/71	0/3/3/3
4	3KK	A	802[B]	-	-	0/52/73/73	0/3/3/3

Continued on next page...

Continued from previous page...

Mol	Type	Chain	Res	Link	Chirals	Torsions	Rings
5	5AD	A	803[C]	-	-	0/0/20/20	0/3/3/3
3	3HC	B	801[A]	-	-	0/51/71/71	0/3/3/3
4	3KK	B	802[B]	-	-	0/52/73/73	0/3/3/3
6	B12	C	800	2	-	0/51/223/223	0/3/11/11
6	B12	D	800	2	-	0/51/223/223	0/3/11/11

The worst 5 of 32 bond length outliers are listed below:

Mol	Chain	Res	Type	Atoms	Z	Observed(Å)	Ideal(Å)
3	A	801[A]	3HC	C8A-N9A	-2.93	1.33	1.36
4	A	802[B]	3KK	C8A-N9A	-2.75	1.33	1.36
3	B	801[A]	3HC	C8A-N9A	-2.72	1.33	1.36
4	B	802[B]	3KK	C8A-N9A	-2.59	1.33	1.36
5	A	803[C]	5AD	C8-N9	-2.39	1.34	1.36

The worst 5 of 46 bond angle outliers are listed below:

Mol	Chain	Res	Type	Atoms	Z	Observed(°)	Ideal(°)
3	B	801[A]	3HC	N3A-C2A-N1A	-19.45	112.22	128.86
3	A	801[A]	3HC	N3A-C2A-N1A	-19.44	112.22	128.86
4	B	802[B]	3KK	N3A-C2A-N1A	-14.74	116.25	128.86
4	A	802[B]	3KK	N3A-C2A-N1A	-14.71	116.27	128.86
5	A	803[C]	5AD	N3-C2-N1	-11.59	118.94	128.86

There are no chirality outliers.

There are no torsion outliers.

There are no ring outliers.

5 monomers are involved in 26 short contacts:

Mol	Chain	Res	Type	Clashes	Symm-Clashes
3	A	801[A]	3HC	4	0
4	A	802[B]	3KK	3	0
5	A	803[C]	5AD	6	0
6	C	800	B12	9	0
6	D	800	B12	7	0

5.7 Other polymers ⓘ

There are no such residues in this entry.

5.8 Polymer linkage issues ⓘ

There are no chain breaks in this entry.

6 Fit of model and data [i](#)

6.1 Protein, DNA and RNA chains [i](#)

In the following table, the column labelled ‘#RSRZ> 2’ contains the number (and percentage) of RSRZ outliers, followed by percent RSRZ outliers for the chain as percentile scores relative to all X-ray entries and entries of similar resolution. The OWAB column contains the minimum, median, 95th percentile and maximum values of the occupancy-weighted average B-factor per residue. The column labelled ‘Q< 0.9’ lists the number of (and percentage) of residues with an average occupancy less than 0.9.

Mol	Chain	Analysed	<RSRZ>	#RSRZ>2	OWAB(Å ²)	Q<0.9
1	A	557/584 (95%)	-0.49	5 (0%) 84 85	16, 34, 62, 97	0
1	B	555/584 (95%)	-0.06	12 (2%) 62 64	42, 56, 81, 101	0
2	C	131/158 (82%)	-0.46	1 (0%) 86 87	19, 36, 61, 73	0
2	D	129/158 (81%)	0.54	14 (10%) 5 5	54, 77, 97, 105	0
All	All	1372/1484 (92%)	-0.22	32 (2%) 60 63	16, 49, 82, 105	0

The worst 5 of 32 RSRZ outliers are listed below:

Mol	Chain	Res	Type	RSRZ
2	D	81	ASP	4.8
1	A	478	ASP	4.8
2	D	61	GLY	4.3
2	D	62	VAL	4.3
1	B	475	ASN	3.7

6.2 Non-standard residues in protein, DNA, RNA chains [i](#)

There are no non-standard protein/DNA/RNA residues in this entry.

6.3 Carbohydrates [i](#)

There are no carbohydrates in this entry.

6.4 Ligands [i](#)

In the following table, the Atoms column lists the number of modelled atoms in the group and the number defined in the chemical component dictionary. The B-factors column lists the minimum, median, 95th percentile and maximum values of B factors of atoms in the group. The column labelled ‘Q< 0.9’ lists the number of atoms with occupancy less than 0.9.

Mol	Type	Chain	Res	Atoms	RSCC	RSR	B-factors(\AA^2)	Q<0.9
5	5AD	A	803[C]	18/18	0.94	0.20	17,27,31,32	18
3	3HC	B	801[A]	54/54	0.94	0.14	45,55,63,65	54
4	3KK	B	802[B]	54/54	0.94	0.14	45,56,63,65	54
4	3KK	A	802[B]	54/54	0.96	0.12	6,32,45,47	54
3	3HC	A	801[A]	54/54	0.96	0.12	20,33,45,47	54
6	B12	D	800	91/91	0.96	0.14	29,44,66,70	0
6	B12	C	800	91/91	0.98	0.13	14,24,35,38	0

6.5 Other polymers [i](#)

There are no such residues in this entry.