



# Full wwPDB X-ray Structure Validation Report ⓘ

Aug 20, 2019 – 02:51 PM EDT

PDB ID : 6R3F  
Title : Aspergillus niger ferulic acid decarboxylase (Fdc) E282Q variant in complex with the covalent adduct formed between prFMN cofactor and cinnamic acid (Int2)  
Authors : Bailey, S.S.; Leys, D.  
Deposited on : 2019-03-20  
Resolution : 1.25 Å(reported)

This is a Full wwPDB X-ray Structure Validation Report for a publicly released PDB entry.

We welcome your comments at [validation@mail.wwpdb.org](mailto:validation@mail.wwpdb.org)

A user guide is available at

<https://www.wwpdb.org/validation/2017/XrayValidationReportHelp>

with specific help available everywhere you see the ⓘ symbol.

---

The following versions of software and data (see [references ⓘ](#)) were used in the production of this report:

MolProbity : 4.02b-467  
Mogul : 1.8.0 (224370), CSD as540be (2019)  
Xtriage (Phenix) : 1.13  
EDS : 2.4  
buster-report : 1.1.7 (2018)  
Percentile statistics : 20171227.v01 (using entries in the PDB archive December 27th 2017)  
Refmac : 5.8.0158  
CCP4 : 7.0 (Gargrove)  
Ideal geometry (proteins) : Engh & Huber (2001)  
Ideal geometry (DNA, RNA) : Parkinson et al. (1996)  
Validation Pipeline (wwPDB-VP) : 2.4

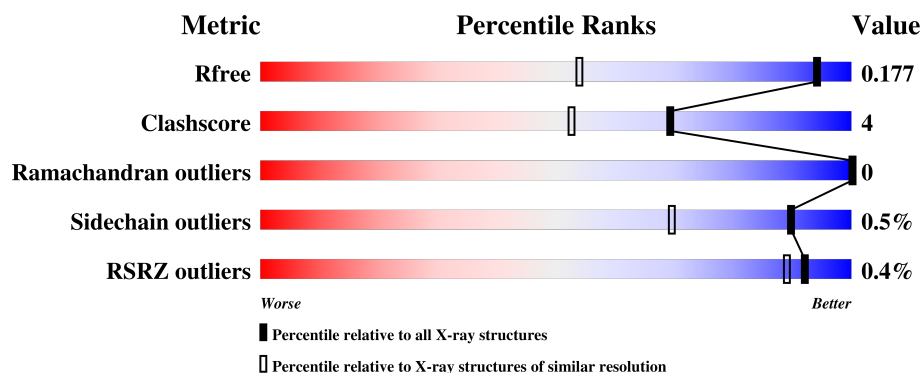
# 1 Overall quality at a glance

The following experimental techniques were used to determine the structure:

*X-RAY DIFFRACTION*


The reported resolution of this entry is 1.25 Å.

Percentile scores (ranging between 0-100) for global validation metrics of the entry are shown in the following graphic. The table shows the number of entries on which the scores are based.



Metric	Whole archive (#Entries)	Similar resolution (#Entries, resolution range(Å))
$R_{free}$	111664	1924 (1.30-1.22)
Clashscore	122126	2002 (1.30-1.22)
Ramachandran outliers	120053	1934 (1.30-1.22)
Sidechain outliers	120020	1932 (1.30-1.22)
RSRZ outliers	108989	1874 (1.30-1.22)

The table below summarises the geometric issues observed across the polymeric chains and their fit to the electron density. The red, orange, yellow and green segments on the lower bar indicate the fraction of residues that contain outliers for  $\geq 3$ , 2, 1 and 0 types of geometric quality criteria. A grey segment represents the fraction of residues that are not modelled. The numeric value for each fraction is indicated below the corresponding segment, with a dot representing fractions  $\leq 5\%$ . The upper red bar (where present) indicates the fraction of residues that have poor fit to the electron density. The numeric value is given above the bar.

Mol	Chain	Length	Quality of chain
1	A	508	 82% 15% ..

## 2 Entry composition

There are 5 unique types of molecules in this entry. The entry contains 4610 atoms, of which 0 are hydrogens and 0 are deuteriums.

In the tables below, the ZeroOcc column contains the number of atoms modelled with zero occupancy, the AltConf column contains the number of residues with at least one atom in alternate conformation and the Trace column contains the number of residues modelled with at most 2 atoms.

- Molecule 1 is a protein called Ferulic acid decarboxylase 1.

Mol	Chain	Residues	Atoms					ZeroOcc	AltConf	Trace
1	A	500	Total	C	N	O	S	0	35	1
			4122	2608	711	772	31			

There are 9 discrepancies between the modelled and reference sequences:

Chain	Residue	Modelled	Actual	Comment	Reference
A	282	GLN	GLU	engineered mutation	UNP A2QHE5
A	499B	LEU	-	expression tag	UNP A2QHE5
A	499C	GLU	-	expression tag	UNP A2QHE5
A	502	HIS	-	expression tag	UNP A2QHE5
A	503	HIS	-	expression tag	UNP A2QHE5
A	504	HIS	-	expression tag	UNP A2QHE5
A	505	HIS	-	expression tag	UNP A2QHE5
A	506	HIS	-	expression tag	UNP A2QHE5
A	507	HIS	-	expression tag	UNP A2QHE5

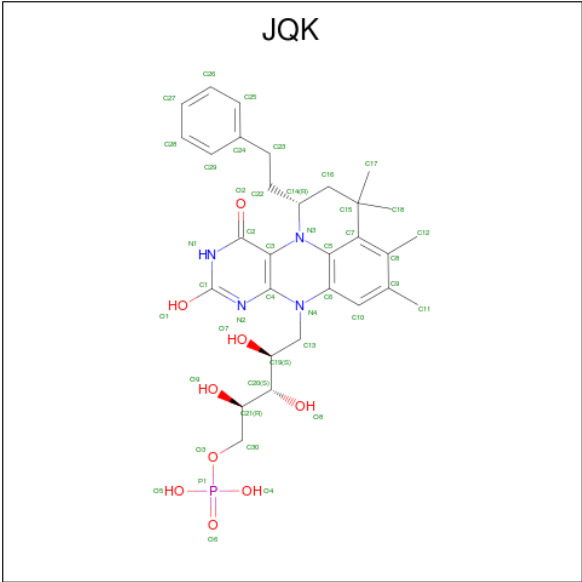
- Molecule 2 is MANGANESE (II) ION (three-letter code: MN) (formula: Mn).

Mol	Chain	Residues	Atoms		ZeroOcc	AltConf
2	A	1	Total	Mn	0	0
			1	1		

- Molecule 3 is POTASSIUM ION (three-letter code: K) (formula: K).

Mol	Chain	Residues	Atoms		ZeroOcc	AltConf
3	A	2	Total	K	0	0
			2	2		

- Molecule 4 is [(2 {R},3 {S},4 {S})-2,3,4-tris(oxidanyl)-5-[(16 {R})-11,12,14,14-tetramethyl-5-oxidanyl-3-oxidanylidene-16-(2-phenylethyl)-1,4,6,8-tetrazatetracyclo[7.7.1.0<sup>2,7</sup>.0<sup>13,17</sup>]]heptadeca-2(7),5,9(17),10,12-pentaen-8-yl]pentyl dihydrogen phosphate (three-letter code: JQK) (formula: C<sub>30</sub>H<sub>39</sub>N<sub>4</sub>O<sub>9</sub>P) (labeled as "Ligand of Interest" by author).



Mol	Chain	Residues	Atoms					ZeroOcc	AltConf
4	A	1	Total	C	N	O	P	0	0
			44	30	4	9	1		

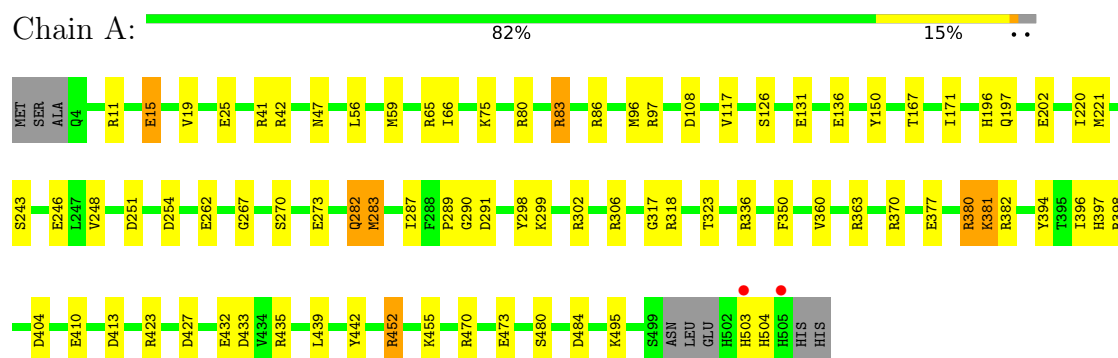
- Molecule 5 is water.

Mol	Chain	Residues	Atoms		ZeroOcc	AltConf
5	A	441	Total	O	0	0
			441	441		

### 3 Residue-property plots

These plots are drawn for all protein, RNA and DNA chains in the entry. The first graphic for a chain summarises the proportions of the various outlier classes displayed in the second graphic. The second graphic shows the sequence view annotated by issues in geometry and electron density. Residues are color-coded according to the number of geometric quality criteria for which they contain at least one outlier: green = 0, yellow = 1, orange = 2 and red = 3 or more. A red dot above a residue indicates a poor fit to the electron density ( $RSRZ > 2$ ). Stretches of 2 or more consecutive residues without any outlier are shown as a green connector. Residues present in the sample, but not in the model, are shown in grey.

- Molecule 1: Ferulic acid decarboxylase 1



## 4 Data and refinement statistics

Property	Value	Source
Space group	P 21 21 2	Depositor
Cell constants a, b, c, $\alpha$ , $\beta$ , $\gamma$	96.12Å 64.14Å 87.65Å 90.00° 90.00° 90.00°	Depositor
Resolution (Å)	87.65 – 1.25 87.65 – 1.25	Depositor EDS
% Data completeness (in resolution range)	76.6 (87.65-1.25) 76.6 (87.65-1.25)	Depositor EDS
$R_{merge}$	(Not available)	Depositor
$R_{sym}$	(Not available)	Depositor
$\langle I/\sigma(I) \rangle$ <sup>1</sup>	1.95 (at 1.25Å)	Xtriage
Refinement program	REFMAC 5.8.0189	Depositor
R, $R_{free}$	0.135 , 0.170 0.143 , 0.177	Depositor DCC
$R_{free}$ test set	5848 reflections (5.09%)	wwPDB-VP
Wilson B-factor (Å <sup>2</sup> )	4.6	Xtriage
Anisotropy	2.047	Xtriage
Bulk solvent $k_{sol}$ (e/Å <sup>3</sup> ), $B_{sol}$ (Å <sup>2</sup> )	0.36 , 45.1	EDS
L-test for twinning <sup>2</sup>	$\langle  L  \rangle = 0.50$ , $\langle L^2 \rangle = 0.33$	Xtriage
Estimated twinning fraction	No twinning to report.	Xtriage
$F_o, F_c$ correlation	0.97	EDS
Total number of atoms	4610	wwPDB-VP
Average B, all atoms (Å <sup>2</sup> )	13.0	wwPDB-VP

Xtriage's analysis on translational NCS is as follows: *The largest off-origin peak in the Patterson function is 4.77% of the height of the origin peak. No significant pseudotranslation is detected.*

<sup>1</sup>Intensities estimated from amplitudes.

<sup>2</sup>Theoretical values of  $\langle |L| \rangle$ ,  $\langle L^2 \rangle$  for acentric reflections are 0.5, 0.333 respectively for untwinned datasets, and 0.375, 0.2 for perfectly twinned datasets.

## 5 Model quality

### 5.1 Standard geometry

Bond lengths and bond angles in the following residue types are not validated in this section: K, MN, JQK

The Z score for a bond length (or angle) is the number of standard deviations the observed value is removed from the expected value. A bond length (or angle) with  $|Z| > 5$  is considered an outlier worth inspection. RMSZ is the root-mean-square of all Z scores of the bond lengths (or angles).

Mol	Chain	Bond lengths		Bond angles	
		RMSZ	$\# Z  > 5$	RMSZ	$\# Z  > 5$
1	A	1.53	37/4224 (0.9%)	1.49	57/5738 (1.0%)

Chiral center outliers are detected by calculating the chiral volume of a chiral center and verifying if the center is modelled as a planar moiety or with the opposite hand. A planarity outlier is detected by checking planarity of atoms in a peptide group, atoms in a mainchain group or atoms of a sidechain that are expected to be planar.

Mol	Chain	#Chirality outliers	#Planarity outliers
1	A	0	3

All (37) bond length outliers are listed below:

Mol	Chain	Res	Type	Atoms	Z	Observed(Å)	Ideal(Å)
1	A	202	GLU	CD-OE2	10.91	1.37	1.25
1	A	273	GLU	CD-OE1	-10.83	1.13	1.25
1	A	65	ARG	CZ-NH1	-10.75	1.19	1.33
1	A	202	GLU	CD-OE1	9.94	1.36	1.25
1	A	473	GLU	CD-OE1	8.13	1.34	1.25
1	A	273	GLU	CD-OE2	7.84	1.34	1.25
1	A	370	ARG	CZ-NH2	7.74	1.43	1.33
1	A	83	ARG	CB-CG	-7.46	1.32	1.52
1	A	503	HIS	C-O	7.15	1.36	1.23
1	A	243	SER	CB-OG	7.10	1.51	1.42
1	A	452	ARG	CZ-NH1	7.05	1.42	1.33
1	A	126	SER	CB-OG	-6.32	1.34	1.42
1	A	131	GLU	CD-OE2	-6.15	1.18	1.25
1	A	381	LYS	CE-NZ	6.11	1.64	1.49
1	A	480[A]	SER	CB-OG	6.02	1.50	1.42
1	A	480[B]	SER	CB-OG	6.02	1.50	1.42
1	A	410	GLU	CD-OE1	5.87	1.32	1.25
1	A	433	ASP	CB-CG	5.84	1.64	1.51

*Continued on next page...*

*Continued from previous page...*

Mol	Chain	Res	Type	Atoms	Z	Observed(Å)	Ideal(Å)
1	A	246	GLU	CD-OE1	-5.84	1.19	1.25
1	A	495	LYS	C-O	-5.63	1.12	1.23
1	A	398	ARG	CZ-NH2	-5.60	1.25	1.33
1	A	370	ARG	CD-NE	-5.57	1.36	1.46
1	A	504	HIS	N-CA	5.46	1.57	1.46
1	A	150	TYR	CE1-CZ	-5.42	1.31	1.38
1	A	318	ARG	NE-CZ	5.42	1.40	1.33
1	A	413	ASP	CB-CG	5.38	1.63	1.51
1	A	15[A]	GLU	CD-OE2	5.35	1.31	1.25
1	A	15[B]	GLU	CD-OE2	5.35	1.31	1.25
1	A	282[A]	GLN	CG-CD	-5.34	1.38	1.51
1	A	282[B]	GLN	CG-CD	-5.34	1.38	1.51
1	A	394	TYR	CD2-CE2	-5.29	1.31	1.39
1	A	25	GLU	CD-OE2	-5.25	1.19	1.25
1	A	202	GLU	CB-CG	-5.21	1.42	1.52
1	A	254	ASP	CB-CG	5.07	1.62	1.51
1	A	197	GLN	CD-NE2	5.06	1.45	1.32
1	A	432	GLU	CD-OE1	-5.05	1.20	1.25
1	A	273	GLU	CG-CD	5.03	1.59	1.51

All (57) bond angle outliers are listed below:

Mol	Chain	Res	Type	Atoms	Z	Observed(°)	Ideal(°)
1	A	435	ARG	NE-CZ-NH2	-16.02	112.29	120.30
1	A	381	LYS	CD-CE-NZ	-14.49	78.37	111.70
1	A	42[A]	ARG	NE-CZ-NH2	-11.98	114.31	120.30
1	A	42[B]	ARG	NE-CZ-NH2	-11.98	114.31	120.30
1	A	306	ARG	NE-CZ-NH1	10.77	125.68	120.30
1	A	435	ARG	NE-CZ-NH1	9.94	125.27	120.30
1	A	380	ARG	NE-CZ-NH1	9.47	125.03	120.30
1	A	306	ARG	NE-CZ-NH2	-9.22	115.69	120.30
1	A	291	ASP	CB-CG-OD1	-9.07	110.14	118.30
1	A	298	TYR	CG-CD2-CE2	8.97	128.47	121.30
1	A	302	ARG	NE-CZ-NH2	-8.83	115.88	120.30
1	A	377[A]	GLU	CG-CD-OE2	-8.72	100.85	118.30
1	A	377[B]	GLU	CG-CD-OE2	-8.72	100.85	118.30
1	A	150	TYR	CB-CG-CD1	8.43	126.06	121.00
1	A	484[A]	ASP	CB-CG-OD1	8.32	125.79	118.30
1	A	484[B]	ASP	CB-CG-OD1	8.32	125.79	118.30
1	A	318	ARG	NE-CZ-NH2	-7.93	116.33	120.30
1	A	452	ARG	NE-CZ-NH2	-7.64	116.48	120.30
1	A	377[A]	GLU	CG-CD-OE1	7.45	133.19	118.30

*Continued on next page...*



*Continued from previous page...*

Mol	Chain	Res	Type	Atoms	Z	Observed(°)	Ideal(°)
1	A	377[B]	GLU	CG-CD-OE1	7.45	133.19	118.30
1	A	427	ASP	CB-CG-OD1	7.15	124.73	118.30
1	A	97	ARG	NE-CZ-NH1	7.12	123.86	120.30
1	A	262	GLU	OE1-CD-OE2	7.08	131.80	123.30
1	A	86	ARG	NE-CZ-NH1	7.03	123.82	120.30
1	A	86	ARG	NE-CZ-NH2	-6.98	116.81	120.30
1	A	413	ASP	CB-CG-OD2	-6.92	112.07	118.30
1	A	413	ASP	CB-CG-OD1	6.65	124.28	118.30
1	A	65	ARG	CD-NE-CZ	6.64	132.89	123.60
1	A	80	ARG	NE-CZ-NH2	-6.30	117.15	120.30
1	A	283[A]	MET	CG-SD-CE	6.30	110.27	100.20
1	A	283[B]	MET	CG-SD-CE	6.30	110.27	100.20
1	A	495	LYS	N-CA-CB	6.30	121.93	110.60
1	A	404	ASP	CB-CG-OD2	6.29	123.96	118.30
1	A	398	ARG	CD-NE-CZ	6.21	132.30	123.60
1	A	298	TYR	CD1-CE1-CZ	6.20	125.38	119.80
1	A	251	ASP	CB-CG-OD1	6.15	123.83	118.30
1	A	394	TYR	CB-CG-CD1	6.08	124.65	121.00
1	A	423	ARG	NE-CZ-NH2	-5.89	117.35	120.30
1	A	11	ARG	NE-CZ-NH2	5.87	123.24	120.30
1	A	167	THR	O-C-N	5.87	132.09	122.70
1	A	83	ARG	CB-CG-CD	5.67	126.35	111.60
1	A	380	ARG	CG-CD-NE	5.67	123.71	111.80
1	A	150	TYR	CD1-CE1-CZ	5.58	124.82	119.80
1	A	221[A]	MET	CG-SD-CE	5.54	109.06	100.20
1	A	221[B]	MET	CG-SD-CE	5.54	109.06	100.20
1	A	254	ASP	CB-CG-OD2	-5.49	113.36	118.30
1	A	80	ARG	NE-CZ-NH1	5.47	123.03	120.30
1	A	336	ARG	NE-CZ-NH1	-5.42	117.59	120.30
1	A	442	TYR	CA-CB-CG	5.42	123.69	113.40
1	A	83	ARG	NE-CZ-NH1	5.38	122.99	120.30
1	A	382	ARG	NE-CZ-NH2	-5.32	117.64	120.30
1	A	427	ASP	CB-CG-OD2	-5.24	113.59	118.30
1	A	136	GLU	CG-CD-OE1	5.16	128.62	118.30
1	A	42[A]	ARG	NH1-CZ-NH2	5.07	124.98	119.40
1	A	42[B]	ARG	NH1-CZ-NH2	5.07	124.98	119.40
1	A	41	ARG	CD-NE-CZ	5.07	130.70	123.60
1	A	136	GLU	CG-CD-OE2	-5.07	108.17	118.30

There are no chirality outliers.

All (3) planarity outliers are listed below:

Mol	Chain	Res	Type	Group
1	A	290[B]	GLY	Peptide
1	A	380	ARG	Sidechain
1	A	83	ARG	Sidechain

## 5.2 Too-close contacts

In the following table, the Non-H and H(model) columns list the number of non-hydrogen atoms and hydrogen atoms in the chain respectively. The H(added) column lists the number of hydrogen atoms added and optimized by MolProbity. The Clashes column lists the number of clashes within the asymmetric unit, whereas Symm-Clashes lists symmetry related clashes.

Mol	Chain	Non-H	H(model)	H(added)	Clashes	Symm-Clashes
1	A	4122	0	4004	30	0
2	A	1	0	0	0	0
3	A	2	0	0	0	0
4	A	44	0	0	3	0
5	A	441	0	0	8	0
All	All	4610	0	4004	33	0

The all-atom clashscore is defined as the number of clashes found per 1000 atoms (including hydrogen atoms). The all-atom clashscore for this structure is 4.

All (33) close contacts within the same asymmetric unit are listed below, sorted by their clash magnitude.

Atom-1	Atom-2	Interatomic distance (Å)	Clash overlap (Å)
1:A:59[A]:MET:SD	5:A:943:HOH:O	2.35	0.84
1:A:283[B]:MET:HG2	1:A:323:THR:HB	1.66	0.77
1:A:381:LYS:HG3	5:A:722:HOH:O	1.87	0.74
1:A:381:LYS:HE3	5:A:722:HOH:O	1.95	0.65
4:A:604:JQK:C23	4:A:604:JQK:C3	2.76	0.63
1:A:282[B]:GLN:HE21	1:A:283[B]:MET:HB2	1.64	0.63
1:A:363:ARG:NH1	5:A:703:HOH:O	2.33	0.61
1:A:15[B]:GLU:O	1:A:19[B]:VAL:HG13	2.03	0.58
1:A:196[B]:HIS:HE1	1:A:270:SER:O	1.86	0.58
1:A:59[A]:MET:CE	5:A:943:HOH:O	2.54	0.55
1:A:470:ARG:NE	5:A:705:HOH:O	2.41	0.53
1:A:96[B]:MET:HG2	1:A:350:PHE:CE1	2.48	0.47
1:A:381:LYS:CG	5:A:722:HOH:O	2.52	0.47
1:A:282[A]:GLN:HG2	1:A:283[A]:MET:H	1.79	0.46
1:A:108[A]:ASP:O	1:A:108[A]:ASP:CG	2.54	0.46
1:A:282[B]:GLN:O	1:A:283[B]:MET:CB	2.61	0.45

*Continued on next page...*

Continued from previous page...

Atom-1	Atom-2	Interatomic distance (Å)	Clash overlap (Å)
1:A:267:GLY:HA3	1:A:299:LYS:O	2.16	0.45
1:A:117:VAL:HG23	1:A:248[B]:VAL:HG22	1.97	0.45
1:A:282[B]:GLN:HG2	1:A:283[B]:MET:N	2.24	0.45
1:A:282[B]:GLN:O	1:A:283[B]:MET:HB2	2.16	0.44
4:A:604:JQK:C17	4:A:604:JQK:C12	2.95	0.44
1:A:287:ILE:O	1:A:289[A]:PRO:HD3	2.18	0.44
1:A:282[A]:GLN:O	1:A:317:GLY:HA2	2.19	0.42
1:A:196[A]:HIS:HE1	1:A:270:SER:O	2.03	0.41
1:A:47:ASN:O	1:A:75:LYS:CG	2.69	0.41
1:A:196[B]:HIS:CE1	1:A:270:SER:O	2.71	0.41
1:A:56[B]:LEU:HD11	1:A:66:ILE:HD12	2.02	0.41
1:A:59[A]:MET:HE2	5:A:1039:HOH:O	2.21	0.41
1:A:360:VAL:HG23	1:A:396:ILE:HD12	2.03	0.41
1:A:56[B]:LEU:HD11	1:A:66:ILE:CG1	2.51	0.41
1:A:397:HIS:CD2	1:A:455:LYS:HE2	2.57	0.40
1:A:171:ILE:HD11	1:A:220:ILE:HG13	2.04	0.40
4:A:604:JQK:C23	4:A:604:JQK:C2	3.00	0.40

There are no symmetry-related clashes.

## 5.3 Torsion angles

### 5.3.1 Protein backbone

In the following table, the Percentiles column shows the percent Ramachandran outliers of the chain as a percentile score with respect to all X-ray entries followed by that with respect to entries of similar resolution.

The Analysed column shows the number of residues for which the backbone conformation was analysed, and the total number of residues.

Mol	Chain	Analysed	Favoured	Allowed	Outliers	Percentiles	
1	A	531/508 (104%)	512 (96%)	19 (4%)	0	100	100

There are no Ramachandran outliers to report.

### 5.3.2 Protein sidechains

In the following table, the Percentiles column shows the percent sidechain outliers of the chain as a percentile score with respect to all X-ray entries followed by that with respect to entries of similar resolution.

The Analysed column shows the number of residues for which the sidechain conformation was analysed, and the total number of residues.

Mol	Chain	Analysed	Rotameric	Outliers	Percentiles	
1	A	445/430 (104%)	442 (99%)	3 (1%)	85	62

All (3) residues with a non-rotameric sidechain are listed below:

Mol	Chain	Res	Type
1	A	439[A]	LEU
1	A	439[B]	LEU
1	A	452	ARG

Some sidechains can be flipped to improve hydrogen bonding and reduce clashes. All (1) such sidechains are listed below:

Mol	Chain	Res	Type
1	A	293	HIS

### 5.3.3 RNA [i](#)

There are no RNA molecules in this entry.

## 5.4 Non-standard residues in protein, DNA, RNA chains [i](#)

There are no non-standard protein/DNA/RNA residues in this entry.

## 5.5 Carbohydrates [i](#)

There are no carbohydrates in this entry.

## 5.6 Ligand geometry [i](#)

Of 4 ligands modelled in this entry, 3 are monoatomic - leaving 1 for Mogul analysis.

In the following table, the Counts columns list the number of bonds (or angles) for which Mogul statistics could be retrieved, the number of bonds (or angles) that are observed in the model and the number of bonds (or angles) that are defined in the Chemical Component Dictionary. The Link column lists molecule types, if any, to which the group is linked. The Z score for a bond length (or angle) is the number of standard deviations the observed value is removed from the expected value. A bond length (or angle) with  $|Z| > 2$  is considered an outlier worth inspection. RMSZ is the root-mean-square of all Z scores of the bond lengths (or angles).

Mol	Type	Chain	Res	Link	Bond lengths			Bond angles		
					Counts	RMSZ	# Z  > 2	Counts	RMSZ	# Z  > 2
4	JQK	A	604	3,2	42,48,48	2.49	13 (30%)	54,74,74	2.69	19 (35%)

In the following table, the Chirals column lists the number of chiral outliers, the number of chiral centers analysed, the number of these observed in the model and the number defined in the Chemical Component Dictionary. Similar counts are reported in the Torsion and Rings columns. '-' means no outliers of that kind were identified.

Mol	Type	Chain	Res	Link	Chirals	Torsions	Rings
4	JQK	A	604	3,2	-	4/23/38/38	0/4/5/5

All (13) bond length outliers are listed below:

Mol	Chain	Res	Type	Atoms	Z	Observed(Å)	Ideal(Å)
4	A	604	JQK	C13-N4	-9.03	1.39	1.48
4	A	604	JQK	C6-N4	6.38	1.47	1.38
4	A	604	JQK	C2-N1	4.71	1.41	1.33
4	A	604	JQK	C22-C14	3.90	1.58	1.52
4	A	604	JQK	C23-C24	-3.80	1.40	1.51
4	A	604	JQK	C7-C5	3.30	1.48	1.43
4	A	604	JQK	C29-C24	3.17	1.45	1.38
4	A	604	JQK	C22-C23	-2.89	1.39	1.52
4	A	604	JQK	O8-C20	2.76	1.49	1.43
4	A	604	JQK	O7-C19	2.47	1.48	1.43
4	A	604	JQK	C25-C24	-2.46	1.33	1.38
4	A	604	JQK	C30-C21	2.20	1.54	1.51
4	A	604	JQK	C10-C9	2.08	1.43	1.37

All (19) bond angle outliers are listed below:

Mol	Chain	Res	Type	Atoms	Z	Observed(°)	Ideal(°)
4	A	604	JQK	C3-C2-N1	-7.87	112.51	123.47
4	A	604	JQK	C13-N4-C4	7.36	125.67	118.46
4	A	604	JQK	C3-N3-C5	-6.80	115.42	121.76
4	A	604	JQK	C6-N4-C4	-5.61	114.47	121.77
4	A	604	JQK	C17-C15-C7	4.67	116.29	111.72
4	A	604	JQK	C22-C23-C24	4.44	128.88	113.21
4	A	604	JQK	C9-C8-C7	4.02	122.96	119.39
4	A	604	JQK	C26-C25-C24	3.32	125.78	120.63
4	A	604	JQK	C2-C3-N3	-3.11	117.77	123.11
4	A	604	JQK	C11-C9-C8	3.10	126.06	121.17
4	A	604	JQK	C3-C4-N4	3.03	123.41	120.30
4	A	604	JQK	C12-C8-C9	-2.80	114.50	119.70

Continued on next page...

*Continued from previous page...*

Mol	Chain	Res	Type	Atoms	Z	Observed(°)	Ideal(°)
4	A	604	JQK	C18-C15-C17	-2.77	102.37	108.66
4	A	604	JQK	C27-C26-C25	-2.67	116.08	120.19
4	A	604	JQK	C8-C7-C5	-2.62	116.51	119.10
4	A	604	JQK	C2-N1-C1	2.52	121.08	115.56
4	A	604	JQK	C15-C7-C8	2.51	131.38	126.05
4	A	604	JQK	C28-C29-C24	-2.45	116.84	120.63
4	A	604	JQK	C27-C28-C29	2.03	123.32	120.19

There are no chirality outliers.

All (4) torsion outliers are listed below:

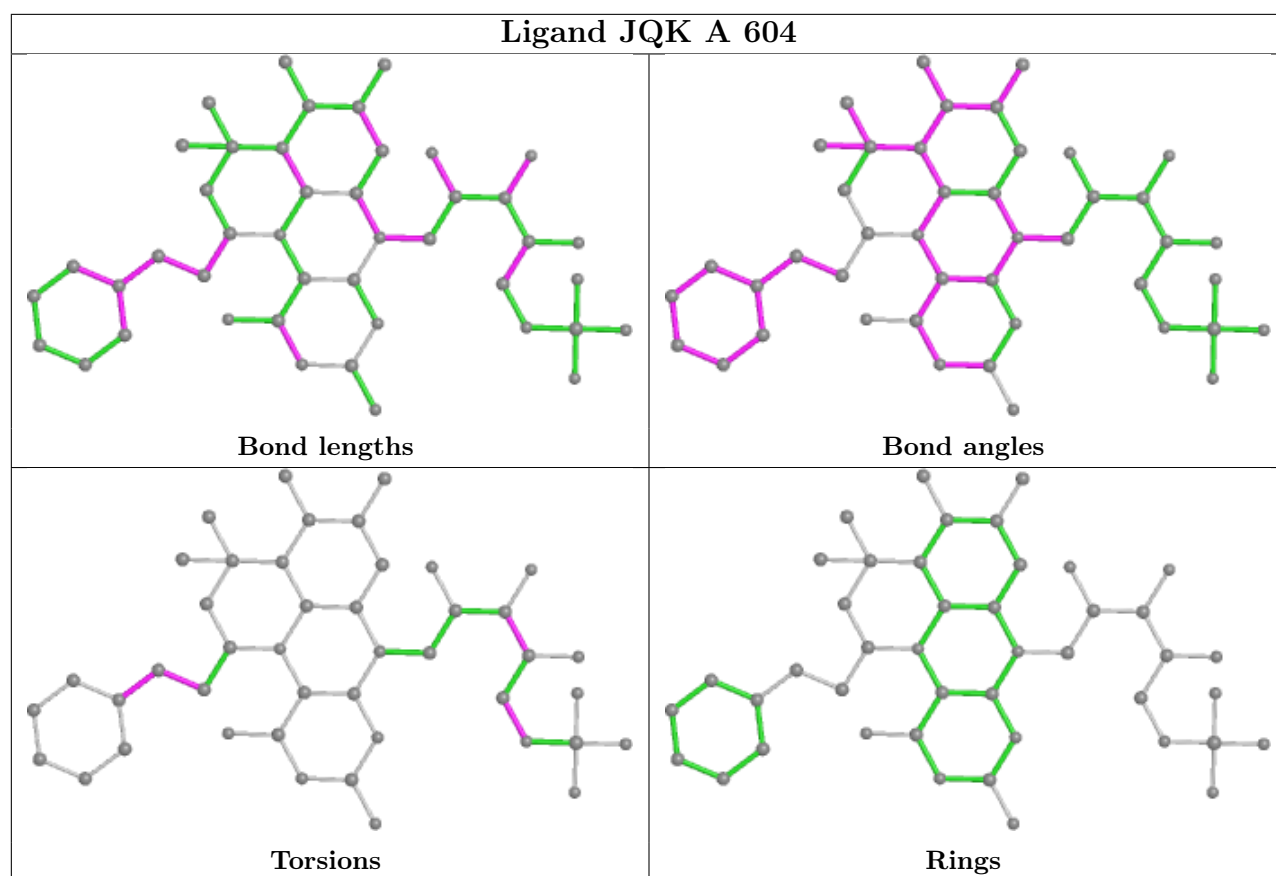
Mol	Chain	Res	Type	Atoms
4	A	604	JQK	C14-C22-C23-C24
4	A	604	JQK	C19-C20-C21-C30
4	A	604	JQK	C22-C23-C24-C25
4	A	604	JQK	C21-C30-O3-P1

There are no ring outliers.

1 monomer is involved in 3 short contacts:

Mol	Chain	Res	Type	Clashes	Symm-Clashes
4	A	604	JQK	3	0

The following is a two-dimensional graphical depiction of Mogul quality analysis of bond lengths, bond angles, torsion angles, and ring geometry for all instances of the Ligand of Interest. In addition, ligands with molecular weight > 250 and outliers as shown on the validation Tables will also be included. For torsion angles, if less than 5% of the Mogul distribution of torsion angles is within 10 degrees of the torsion angle in question, then that torsion angle is considered an outlier. Any bond that is central to one or more torsion angles identified as an outlier by Mogul will be highlighted in the graph. For rings, the root-mean-square deviation (RMSD) between the ring in question and similar rings identified by Mogul is calculated over all ring torsion angles. If the average RMSD is greater than 60 degrees and the minimal RMSD between the ring in question and any Mogul-identified rings is also greater than 60 degrees, then that ring is considered an outlier. The outliers are highlighted in purple. The color gray indicates Mogul did not find sufficient equivalents in the CSD to analyse the geometry.



## 5.7 Other polymers [i](#)

There are no such residues in this entry.

## 5.8 Polymer linkage issues [i](#)

There are no chain breaks in this entry.

## 6 Fit of model and data [i](#)

### 6.1 Protein, DNA and RNA chains [i](#)

In the following table, the column labelled ‘#RSRZ> 2’ contains the number (and percentage) of RSRZ outliers, followed by percent RSRZ outliers for the chain as percentile scores relative to all X-ray entries and entries of similar resolution. The OWAB column contains the minimum, median, 95<sup>th</sup> percentile and maximum values of the occupancy-weighted average B-factor per residue. The column labelled ‘Q< 0.9’ lists the number of (and percentage) of residues with an average occupancy less than 0.9.

Mol	Chain	Analysed	<RSRZ>	#RSRZ>2	OWAB(Å <sup>2</sup> )	Q<0.9
1	A	500/508 (98%)	-0.25	2 (0%) 92 89	7, 11, 24, 58	0

All (2) RSRZ outliers are listed below:

Mol	Chain	Res	Type	RSRZ
1	A	503	HIS	2.6
1	A	505	HIS	2.2

### 6.2 Non-standard residues in protein, DNA, RNA chains [i](#)

There are no non-standard protein/DNA/RNA residues in this entry.

### 6.3 Carbohydrates [i](#)

There are no carbohydrates in this entry.

### 6.4 Ligands [i](#)

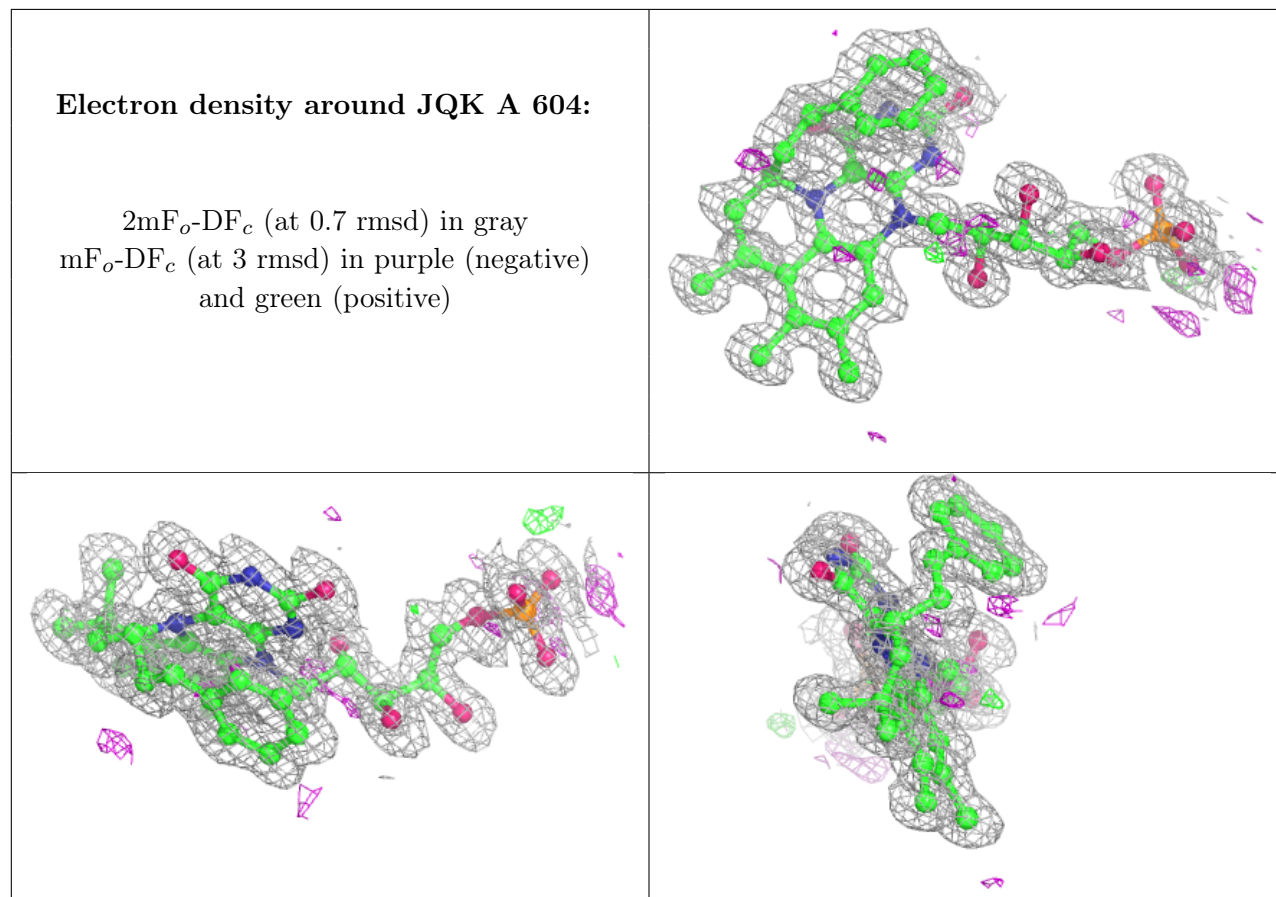
In the following table, the Atoms column lists the number of modelled atoms in the group and the number defined in the chemical component dictionary. The B-factors column lists the minimum, median, 95<sup>th</sup> percentile and maximum values of B factors of atoms in the group. The column labelled ‘Q< 0.9’ lists the number of atoms with occupancy less than 0.9.

Mol	Type	Chain	Res	Atoms	RSCC	RSR	B-factors(Å <sup>2</sup> )	Q<0.9
4	JQK	A	604	44/44	0.99	0.07	5,7,14,21	0
3	K	A	603	1/1	1.00	0.07	8,8,8,8	0
3	K	A	602	1/1	1.00	0.09	7,7,7,7	0
2	MN	A	601	1/1	1.00	0.08	8,8,8,8	0

The following is a graphical depiction of the model fit to experimental electron density of all



instances of the Ligand of Interest. In addition, ligands with molecular weight > 250 and outliers as shown on the geometry validation Tables will also be included. Each fit is shown from different orientation to approximate a three-dimensional view.



## 6.5 Other polymers [i](#)

There are no such residues in this entry.