



# Full wwPDB X-ray Structure Validation Report ⓘ

Mar 13, 2018 – 05:19 pm GMT

PDB ID : 3R6C  
Title : Anthranilate phosphoribosyltransferase (trpD) from Mycobacterium tuberculosis (complex with inhibitor ACS179)  
Authors : Castell, A.; Short, F.L.; Lott, J.S.; TB Structural Genomics Consortium (TB-SGC)  
Deposited on : 2011-03-21  
Resolution : 1.83 Å(reported)

This is a Full wwPDB X-ray Structure Validation Report for a publicly released PDB entry.

We welcome your comments at [validation@mail.wwpdb.org](mailto:validation@mail.wwpdb.org)

A user guide is available at

<https://www.wwpdb.org/validation/2017/XrayValidationReportHelp>

with specific help available everywhere you see the ⓘ symbol.

---

The following versions of software and data (see [references ⓘ](#)) were used in the production of this report:

MolProbity : 4.02b-467  
Mogul : 1.7.3 (157068), CSD as539be (2018)  
Xtriage (Phenix) : 1.13  
EDS : trunk31020  
Percentile statistics : 20171227.v01 (using entries in the PDB archive December 27th 2017)  
Refmac : 5.8.0158  
CCP4 : 7.0 (Gargrove)  
Ideal geometry (proteins) : Engh & Huber (2001)  
Ideal geometry (DNA, RNA) : Parkinson et al. (1996)  
Validation Pipeline (wwPDB-VP) : trunk31020

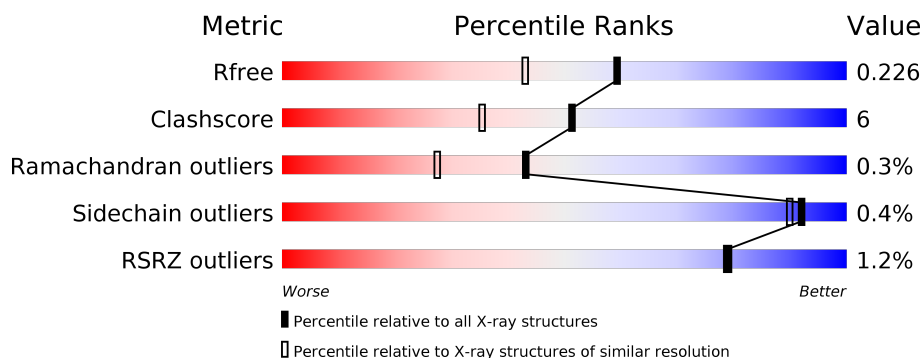
# 1 Overall quality at a glance

The following experimental techniques were used to determine the structure:

*X-RAY DIFFRACTION*

The reported resolution of this entry is 1.83 Å.

Percentile scores (ranging between 0-100) for global validation metrics of the entry are shown in the following graphic. The table shows the number of entries on which the scores are based.



Metric	Whole archive (#Entries)	Similar resolution (#Entries, resolution range(Å))
$R_{free}$	111664	3313 (1.86-1.82)
Clashscore	122126	3530 (1.86-1.82)
Ramachandran outliers	120053	3495 (1.86-1.82)
Sidechain outliers	120020	3496 (1.86-1.82)
RSRZ outliers	108989	3265 (1.86-1.82)

The table below summarises the geometric issues observed across the polymeric chains and their fit to the electron density. The red, orange, yellow and green segments on the lower bar indicate the fraction of residues that contain outliers for  $\geq 3$ , 2, 1 and 0 types of geometric quality criteria. A grey segment represents the fraction of residues that are not modelled. The numeric value for each fraction is indicated below the corresponding segment, with a dot representing fractions  $\leq 5\%$ . The upper red bar (where present) indicates the fraction of residues that have poor fit to the electron density. The numeric value is given above the bar.

Mol	Chain	Length	Quality of chain
1	A	377	 % 84% 7% 8%
1	B	377	 2% 83% 8% 8%

## 2 Entry composition

There are 6 unique types of molecules in this entry. The entry contains 5711 atoms, of which 0 are hydrogens and 0 are deuteriums.

In the tables below, the ZeroOcc column contains the number of atoms modelled with zero occupancy, the AltConf column contains the number of residues with at least one atom in alternate conformation and the Trace column contains the number of residues modelled with at most 2 atoms.

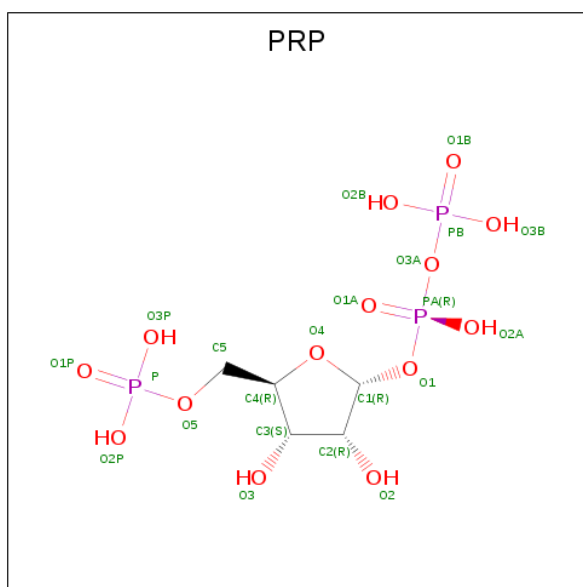
- Molecule 1 is a protein called Anthranilate phosphoribosyltransferase.

Mol	Chain	Residues	Atoms					ZeroOcc	AltConf	Trace
1	A	346	Total	C	N	O	S	0	0	0
			2505	1566	465	465	9			
1	B	346	Total	C	N	O	S	0	0	0
			2505	1566	465	465	9			

There are 16 discrepancies between the modelled and reference sequences:

Chain	Residue	Modelled	Actual	Comment	Reference
A	371	LEU	-	EXPRESSION TAG	UNP P66992
A	372	GLU	-	EXPRESSION TAG	UNP P66992
A	373	HIS	-	EXPRESSION TAG	UNP P66992
A	374	HIS	-	EXPRESSION TAG	UNP P66992
A	375	HIS	-	EXPRESSION TAG	UNP P66992
A	376	HIS	-	EXPRESSION TAG	UNP P66992
A	377	HIS	-	EXPRESSION TAG	UNP P66992
A	378	HIS	-	EXPRESSION TAG	UNP P66992
B	371	LEU	-	EXPRESSION TAG	UNP P66992
B	372	GLU	-	EXPRESSION TAG	UNP P66992
B	373	HIS	-	EXPRESSION TAG	UNP P66992
B	374	HIS	-	EXPRESSION TAG	UNP P66992
B	375	HIS	-	EXPRESSION TAG	UNP P66992
B	376	HIS	-	EXPRESSION TAG	UNP P66992
B	377	HIS	-	EXPRESSION TAG	UNP P66992
B	378	HIS	-	EXPRESSION TAG	UNP P66992

- Molecule 2 is ALPHA-PHOSPHORIBOSYLPYROPHOSPHORIC ACID (three-letter code: PRP) (formula: C<sub>5</sub>H<sub>13</sub>O<sub>14</sub>P<sub>3</sub>).

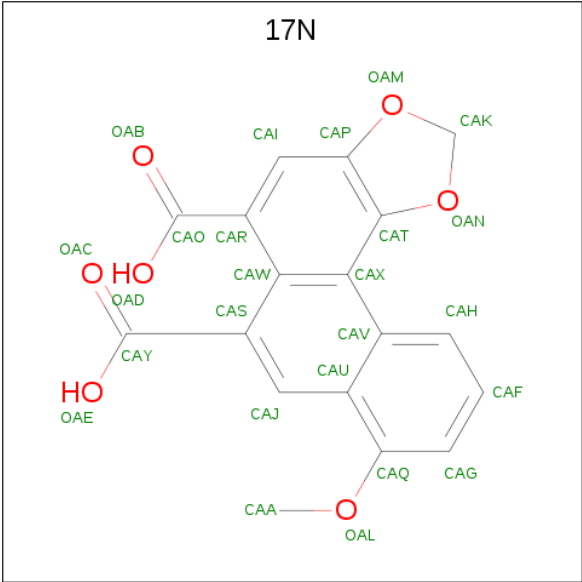


Mol	Chain	Residues	Atoms				ZeroOcc	AltConf
2	A	1	Total	C	O	P	0	0
			22	5	14	3		
2	B	1	Total	C	O	P	0	0
			22	5	14	3		

- Molecule 3 is MAGNESIUM ION (three-letter code: MG) (formula: Mg).

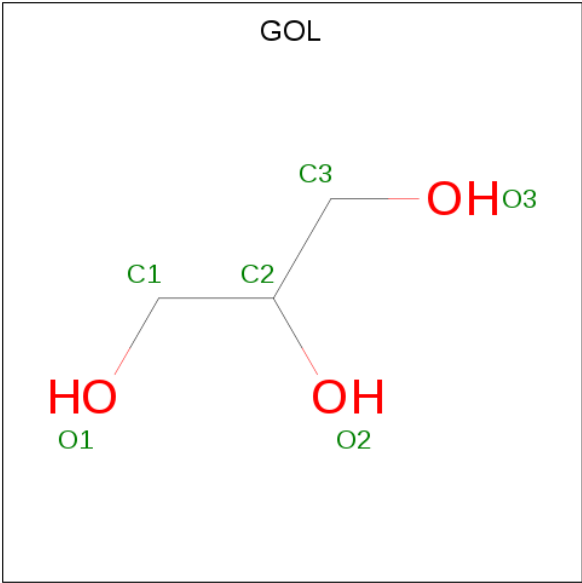
Mol	Chain	Residues	Atoms		ZeroOcc	AltConf
3	B	2	Total	Mg	0	0
			2	2		
3	A	2	Total	Mg	0	0
			2	2		

- Molecule 4 is 8-methoxyphenanthro[3,4-d][1,3]dioxole-5,6-dicarboxylic acid (three-letter code: 17N) (formula: C<sub>18</sub>H<sub>12</sub>O<sub>7</sub>).



Mol	Chain	Residues	Atoms			ZeroOcc	AltConf
4	A	1	Total	C	O	0	0
			25	18	7		
4	A	1	Total	C	O	0	0
			25	18	7		
4	B	1	Total	C	O	0	0
			25	18	7		

- Molecule 5 is GLYCEROL (three-letter code: GOL) (formula: C<sub>3</sub>H<sub>8</sub>O<sub>3</sub>).



Mol	Chain	Residues	Atoms			ZeroOcc	AltConf
5	B	1	Total	C	O	0	0
			6	3	3		

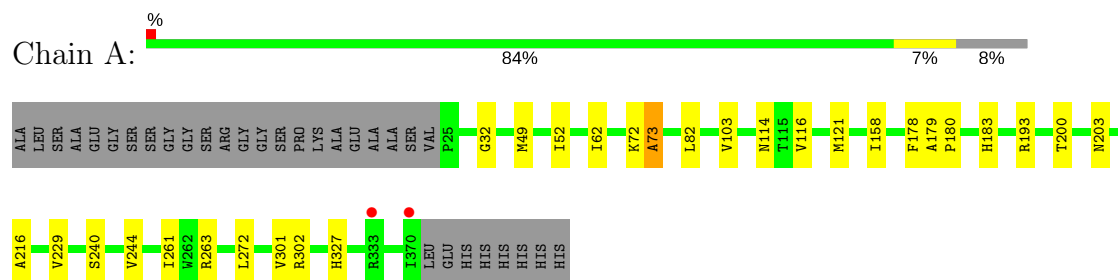
- Molecule 6 is water.

Mol	Chain	Residues	Atoms		ZeroOcc	AltConf
6	A	309	Total 309	O 309	0	0
6	B	263	Total 263	O 263	0	0

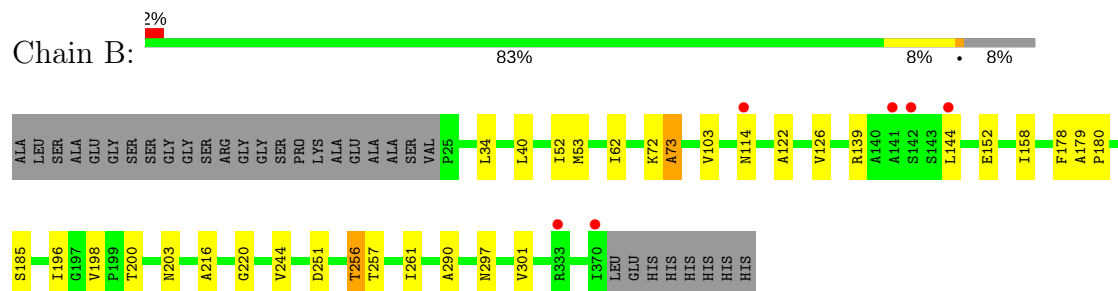
### 3 Residue-property plots [i](#)

These plots are drawn for all protein, RNA and DNA chains in the entry. The first graphic for a chain summarises the proportions of the various outlier classes displayed in the second graphic. The second graphic shows the sequence view annotated by issues in geometry and electron density. Residues are color-coded according to the number of geometric quality criteria for which they contain at least one outlier: green = 0, yellow = 1, orange = 2 and red = 3 or more. A red dot above a residue indicates a poor fit to the electron density ( $RSRZ > 2$ ). Stretches of 2 or more consecutive residues without any outlier are shown as a green connector. Residues present in the sample, but not in the model, are shown in grey.

- Molecule 1: Anthranilate phosphoribosyltransferase



- Molecule 1: Anthranilate phosphoribosyltransferase



## 4 Data and refinement statistics

Property	Value	Source
Space group	C 1 2 1	Depositor
Cell constants a, b, c, $\alpha$ , $\beta$ , $\gamma$	93.98Å 77.93Å 99.80Å 90.00° 110.18° 90.00°	Depositor
Resolution (Å)	93.68 – 1.83 58.40 – 1.83	Depositor EDS
% Data completeness (in resolution range)	97.9 (93.68-1.83) 98.0 (58.40-1.83)	Depositor EDS
$R_{merge}$	(Not available)	Depositor
$R_{sym}$	0.06	Depositor
$\langle I/\sigma(I) \rangle$ <sup>1</sup>	1.18 (at 1.83Å)	Xtriage
Refinement program	REFMAC	Depositor
R, $R_{free}$	0.186 , 0.227 0.186 , 0.226	Depositor DCC
$R_{free}$ test set	2822 reflections (4.86%)	wwPDB-VP
Wilson B-factor (Å <sup>2</sup> )	19.1	Xtriage
Anisotropy	0.261	Xtriage
Bulk solvent $k_{sol}$ (e/Å <sup>3</sup> ), $B_{sol}$ (Å <sup>2</sup> )	0.37 , 39.3	EDS
L-test for twinning <sup>2</sup>	$\langle  L  \rangle = 0.49$ , $\langle L^2 \rangle = 0.32$	Xtriage
Estimated twinning fraction	No twinning to report.	Xtriage
$F_o, F_c$ correlation	0.95	EDS
Total number of atoms	5711	wwPDB-VP
Average B, all atoms (Å <sup>2</sup> )	22.0	wwPDB-VP

Xtriage's analysis on translational NCS is as follows: *The largest off-origin peak in the Patterson function is 7.07% of the height of the origin peak. No significant pseudotranslation is detected.*

<sup>1</sup>Intensities estimated from amplitudes.

<sup>2</sup>Theoretical values of  $\langle |L| \rangle$ ,  $\langle L^2 \rangle$  for acentric reflections are 0.5, 0.333 respectively for untwinned datasets, and 0.375, 0.2 for perfectly twinned datasets.



## 5 Model quality

### 5.1 Standard geometry

Bond lengths and bond angles in the following residue types are not validated in this section: GOL, MG, PRP, 17N

The Z score for a bond length (or angle) is the number of standard deviations the observed value is removed from the expected value. A bond length (or angle) with  $|Z| > 5$  is considered an outlier worth inspection. RMSZ is the root-mean-square of all Z scores of the bond lengths (or angles).

Mol	Chain	Bond lengths		Bond angles	
		RMSZ	# Z  >5	RMSZ	# Z  >5
1	A	0.46	0/2553	0.59	0/3483
1	B	0.42	0/2553	0.57	0/3483
All	All	0.44	0/5106	0.58	0/6966

There are no bond length outliers.

There are no bond angle outliers.

There are no chirality outliers.

There are no planarity outliers.

### 5.2 Too-close contacts

In the following table, the Non-H and H(model) columns list the number of non-hydrogen atoms and hydrogen atoms in the chain respectively. The H(added) column lists the number of hydrogen atoms added and optimized by MolProbity. The Clashes column lists the number of clashes within the asymmetric unit, whereas Symm-Clashes lists symmetry related clashes.

Mol	Chain	Non-H	H(model)	H(added)	Clashes	Symm-Clashes
1	A	2505	0	2500	31	0
1	B	2505	0	2500	24	0
2	A	22	0	8	1	0
2	B	22	0	8	0	0
3	A	2	0	0	0	0
3	B	2	0	0	0	0
4	A	50	0	22	10	0
4	B	25	0	11	2	0
5	B	6	0	8	0	0
6	A	309	0	0	8	0
6	B	263	0	0	2	0
All	All	5711	0	5057	62	0

The all-atom clashscore is defined as the number of clashes found per 1000 atoms (including hydrogen atoms). The all-atom clashscore for this structure is 6.

All (62) close contacts within the same asymmetric unit are listed below, sorted by their clash magnitude.

Atom-1	Atom-2	Interatomic distance (Å)	Clash overlap (Å)
1:B:196:ILE:HG22	1:B:198:VAL:HG12	1.65	0.78
2:A:401:PRP:O1B	6:A:742:HOH:O	2.07	0.71
1:B:196:ILE:CG2	1:B:198:VAL:HG12	2.23	0.67
1:B:256:THR:HG23	6:B:760:HOH:O	1.97	0.65
1:A:103:VAL:HG12	1:A:216:ALA:HB3	1.77	0.64
1:A:180:PRO:HA	4:A:404:17N:CAF	2.28	0.64
4:B:404:17N:CAO	4:B:404:17N:CAY	2.76	0.63
1:B:200:THR:H	1:B:203:ASN:ND2	1.97	0.61
4:A:404:17N:HAH	4:A:404:17N:OAN	2.01	0.60
1:A:114:ASN:HA	6:A:637:HOH:O	2.00	0.60
4:A:405:17N:CAY	4:A:405:17N:CAO	2.80	0.59
1:A:180:PRO:HA	4:A:404:17N:HAF	1.85	0.58
1:B:256:THR:CG2	6:B:760:HOH:O	2.49	0.57
1:A:263:ARG:CZ	1:A:272:LEU:HD11	2.35	0.56
4:A:404:17N:CAY	4:A:404:17N:CAO	2.83	0.56
1:B:103:VAL:HG12	1:B:216:ALA:HB3	1.87	0.56
1:B:114:ASN:HD21	1:B:144:LEU:HD12	1.71	0.55
1:B:72:LYS:O	1:B:73:ALA:HB3	2.07	0.55
1:A:49:MET:CE	1:A:82:LEU:HD22	2.38	0.54
1:A:116:VAL:CG2	6:A:634:HOH:O	2.55	0.53
1:B:179:ALA:HB3	1:B:180:PRO:HD3	1.91	0.51
1:A:103:VAL:HG11	1:A:327:HIS:HB2	1.93	0.51
4:B:404:17N:OAN	4:B:404:17N:HAH	2.10	0.51
1:B:256:THR:HG22	1:B:257:THR:HG22	1.92	0.51
1:A:263:ARG:HG2	4:A:405:17N:OAN	2.11	0.50
1:B:53:MET:O	1:B:185:SER:HB3	2.11	0.50
1:A:200:THR:H	1:A:203:ASN:ND2	2.10	0.49
4:A:405:17N:HAH	4:A:405:17N:OAN	2.12	0.49
1:A:244:VAL:HG12	1:A:261:ILE:HG12	1.94	0.49
1:B:72:LYS:O	1:B:73:ALA:CB	2.61	0.49
1:A:263:ARG:HD2	4:A:405:17N:CAV	2.43	0.49
1:A:116:VAL:HG22	6:A:634:HOH:O	2.14	0.47
1:A:179:ALA:HB3	1:A:180:PRO:HD3	1.97	0.46
1:B:52:ILE:HG12	1:B:62:ILE:HG12	1.96	0.46
1:A:183:HIS:HD2	6:A:529:HOH:O	1.98	0.46
4:A:404:17N:CAO	4:A:404:17N:OAC	2.64	0.46
1:B:196:ILE:HG22	1:B:198:VAL:CG1	2.43	0.46

*Continued on next page...*

Continued from previous page...

Atom-1	Atom-2	Interatomic distance (Å)	Clash overlap (Å)
1:A:52:ILE:HG12	1:A:62:ILE:HG12	1.98	0.45
1:A:72:LYS:O	1:A:73:ALA:HB3	2.15	0.45
1:A:49:MET:HE3	1:A:82:LEU:HD22	1.99	0.45
1:A:49:MET:HE2	1:A:82:LEU:HD22	1.98	0.45
1:A:229:VAL:HG23	6:A:693:HOH:O	2.16	0.45
1:A:216:ALA:HA	1:A:240:SER:O	2.17	0.45
1:B:244:VAL:HG12	1:B:261:ILE:HG12	1.99	0.45
1:B:220:GLY:HA3	1:B:251:ASP:O	2.18	0.44
1:A:263:ARG:HG2	4:A:405:17N:HAH	1.99	0.44
1:B:158:ILE:O	1:B:178:PHE:HB2	2.17	0.43
1:A:116:VAL:HG23	6:A:634:HOH:O	2.18	0.43
1:A:302:ARG:NH1	6:A:701:HOH:O	2.51	0.43
1:B:122:ALA:O	1:B:126:VAL:HG23	2.18	0.43
1:A:121:MET:HG2	1:A:301:VAL:HG22	2.00	0.43
1:B:114:ASN:O	1:B:290:ALA:HA	2.18	0.42
1:B:34:LEU:HG	1:B:40:LEU:HD21	2.01	0.42
1:B:196:ILE:CG2	1:B:198:VAL:CG1	2.96	0.42
1:A:72:LYS:O	1:A:73:ALA:CB	2.68	0.42
1:B:297:ASN:O	1:B:301:VAL:HG23	2.20	0.42
1:A:121:MET:CG	1:A:301:VAL:HG22	2.50	0.42
1:A:72:LYS:HB3	1:A:72:LYS:HE3	1.85	0.42
1:A:32:GLY:HA2	1:B:198:VAL:HG21	2.03	0.41
1:B:139:ARG:NH2	1:B:152:GLU:OE1	2.52	0.41
1:A:49:MET:HE3	1:A:82:LEU:HB3	2.02	0.41
1:A:158:ILE:O	1:A:178:PHE:HB2	2.20	0.41

There are no symmetry-related clashes.

## 5.3 Torsion angles

### 5.3.1 Protein backbone

In the following table, the Percentiles column shows the percent Ramachandran outliers of the chain as a percentile score with respect to all X-ray entries followed by that with respect to entries of similar resolution.

The Analysed column shows the number of residues for which the backbone conformation was analysed, and the total number of residues.

Mol	Chain	Analysed	Favoured	Allowed	Outliers	Percentiles
1	A	344/377 (91%)	340 (99%)	3 (1%)	1 (0%)	43 27

Continued on next page...

*Continued from previous page...*

Mol	Chain	Analysed	Favoured	Allowed	Outliers	Percentiles	
1	B	344/377 (91%)	338 (98%)	5 (2%)	1 (0%)	43	27
All	All	688/754 (91%)	678 (98%)	8 (1%)	2 (0%)	43	27

All (2) Ramachandran outliers are listed below:

Mol	Chain	Res	Type
1	A	73	ALA
1	B	73	ALA

### 5.3.2 Protein sidechains [i](#)

In the following table, the Percentiles column shows the percent sidechain outliers of the chain as a percentile score with respect to all X-ray entries followed by that with respect to entries of similar resolution.

The Analysed column shows the number of residues for which the sidechain conformation was analysed, and the total number of residues.

Mol	Chain	Analysed	Rotameric	Outliers	Percentiles	
1	A	243/264 (92%)	242 (100%)	1 (0%)	92	90
1	B	243/264 (92%)	242 (100%)	1 (0%)	92	90
All	All	486/528 (92%)	484 (100%)	2 (0%)	92	90

All (2) residues with a non-rotameric sidechain are listed below:

Mol	Chain	Res	Type
1	A	193	ARG
1	B	256	THR

Some sidechains can be flipped to improve hydrogen bonding and reduce clashes. All (4) such sidechains are listed below:

Mol	Chain	Res	Type
1	A	183	HIS
1	A	203	ASN
1	B	56	ASN
1	B	203	ASN

### 5.3.3 RNA [i](#)

There are no RNA molecules in this entry.

## 5.4 Non-standard residues in protein, DNA, RNA chains [i](#)

There are no non-standard protein/DNA/RNA residues in this entry.

## 5.5 Carbohydrates [i](#)

There are no carbohydrates in this entry.

## 5.6 Ligand geometry [i](#)

Of 10 ligands modelled in this entry, 4 are monoatomic - leaving 6 for Mogul analysis.

In the following table, the Counts columns list the number of bonds (or angles) for which Mogul statistics could be retrieved, the number of bonds (or angles) that are observed in the model and the number of bonds (or angles) that are defined in the Chemical Component Dictionary. The Link column lists molecule types, if any, to which the group is linked. The Z score for a bond length (or angle) is the number of standard deviations the observed value is removed from the expected value. A bond length (or angle) with  $|Z| > 2$  is considered an outlier worth inspection. RMSZ is the root-mean-square of all Z scores of the bond lengths (or angles).

Mol	Type	Chain	Res	Link	Bond lengths			Bond angles		
					Counts	RMSZ	# $ Z  > 2$	Counts	RMSZ	# $ Z  > 2$
2	PRP	A	401	3	20,22,22	1.22	2 (10%)	31,35,35	2.80	7 (22%)
4	17N	A	404	-	21,28,28	1.06	0	33,42,42	1.88	8 (24%)
4	17N	A	405	-	21,28,28	0.84	0	33,42,42	1.76	7 (21%)
2	PRP	B	401	3	20,22,22	1.50	3 (15%)	31,35,35	1.36	5 (16%)
4	17N	B	404	-	21,28,28	0.89	0	33,42,42	1.82	10 (30%)
5	GOL	B	405	-	5,5,5	0.31	0	5,5,5	0.41	0

In the following table, the Chirals column lists the number of chiral outliers, the number of chiral centers analysed, the number of these observed in the model and the number defined in the Chemical Component Dictionary. Similar counts are reported in the Torsion and Rings columns. '-' means no outliers of that kind were identified.

Mol	Type	Chain	Res	Link	Chirals	Torsions	Rings
2	PRP	A	401	3	-	0/16/33/33	0/1/1/1
4	17N	A	404	-	-	0/2/16/16	0/4/4/4
4	17N	A	405	-	-	0/2/16/16	0/4/4/4

*Continued on next page...*

*Continued from previous page...*

Mol	Type	Chain	Res	Link	Chirals	Torsions	Rings
2	PRP	B	401	3	-	0/16/33/33	0/1/1/1
4	17N	B	404	-	-	0/2/16/16	0/4/4/4
5	GOL	B	405	-	-	0/4/4/4	0/0/0/0

All (5) bond length outliers are listed below:

Mol	Chain	Res	Type	Atoms	Z	Observed(Å)	Ideal(Å)
2	A	401	PRP	P-O1P	2.65	1.59	1.50
2	B	401	PRP	O4-C1	2.81	1.46	1.41
2	B	401	PRP	PB-O1B	2.87	1.60	1.50
2	A	401	PRP	PB-O1B	3.28	1.61	1.50
2	B	401	PRP	P-O1P	3.48	1.62	1.50

All (37) bond angle outliers are listed below:

Mol	Chain	Res	Type	Atoms	Z	Observed(°)	Ideal(°)
2	A	401	PRP	O3B-PB-O1B	-8.65	76.86	110.60
2	A	401	PRP	O3B-PB-O2B	-5.39	86.28	107.59
4	A	404	17N	OAM-CAK-OAN	-3.50	102.73	108.12
4	A	404	17N	CAT-CAX-CAV	-3.32	120.03	124.01
4	A	405	17N	OAN-CAT-CAP	-2.84	106.48	109.75
4	B	404	17N	OAN-CAT-CAP	-2.77	106.57	109.75
4	B	404	17N	OAM-CAK-OAN	-2.74	103.91	108.12
4	B	404	17N	CAA-OAL-CAQ	-2.68	113.96	117.76
4	B	404	17N	CAS-CAW-CAR	-2.65	122.52	125.88
2	B	401	PRP	O4-C1-C2	-2.54	101.70	104.98
4	A	405	17N	CAS-CAW-CAR	-2.38	122.85	125.88
2	B	401	PRP	C5-C4-C3	-2.37	106.38	115.29
4	B	404	17N	CAT-CAX-CAV	-2.30	121.25	124.01
2	B	401	PRP	O3A-PB-O1B	-2.16	98.47	111.48
4	A	405	17N	CAT-CAX-CAV	-2.15	121.44	124.01
4	A	405	17N	OAM-CAK-OAN	-2.15	104.82	108.12
4	B	404	17N	OAL-CAQ-CAG	-2.11	120.73	124.18
4	A	404	17N	OAN-CAT-CAP	-2.03	107.42	109.75
4	A	404	17N	CAJ-CAU-CAQ	-2.02	118.04	121.82
4	A	404	17N	OAM-CAP-CAI	2.02	130.58	127.86
4	B	404	17N	CAJ-CAS-CAW	2.02	120.94	118.56
2	B	401	PRP	O3B-PB-O2B	2.23	116.41	107.59
2	A	401	PRP	O3P-P-O5	2.24	112.70	106.73
2	A	401	PRP	PA-O1-C1	2.28	128.54	119.74
4	B	404	17N	CAI-CAR-CAW	2.51	120.60	118.01
4	A	405	17N	CAI-CAR-CAW	2.81	120.91	118.01

*Continued on next page...*

*Continued from previous page...*

Mol	Chain	Res	Type	Atoms	Z	Observed(°)	Ideal(°)
2	B	401	PRP	PA-O1-C1	3.00	131.34	119.74
4	A	404	17N	CAI-CAR-CAW	3.21	121.33	118.01
4	B	404	17N	CAQ-CAU-CAV	3.64	121.48	118.95
2	A	401	PRP	O3A-PB-O1B	3.92	135.15	111.48
2	A	401	PRP	PA-O3A-PB	4.03	146.18	132.63
4	A	405	17N	CAQ-CAU-CAV	4.04	121.76	118.95
4	A	404	17N	OAL-CAQ-CAU	4.46	118.79	114.48
4	A	404	17N	CAQ-CAU-CAV	4.85	122.33	118.95
4	A	405	17N	OAL-CAQ-CAU	5.08	119.39	114.48
4	B	404	17N	OAL-CAQ-CAU	5.49	119.78	114.48
2	A	401	PRP	O3A-PA-O1	8.75	120.40	102.53

There are no chirality outliers.

There are no torsion outliers.

There are no ring outliers.

4 monomers are involved in 13 short contacts:

Mol	Chain	Res	Type	Clashes	Symm-Clashes
2	A	401	PRP	1	0
4	A	404	17N	5	0
4	A	405	17N	5	0
4	B	404	17N	2	0

## 5.7 Other polymers [i](#)

There are no such residues in this entry.

## 5.8 Polymer linkage issues [i](#)

There are no chain breaks in this entry.

## 6 Fit of model and data [i](#)

### 6.1 Protein, DNA and RNA chains [i](#)

In the following table, the column labelled ‘#RSRZ > 2’ contains the number (and percentage) of RSRZ outliers, followed by percent RSRZ outliers for the chain as percentile scores relative to all X-ray entries and entries of similar resolution. The OWAB column contains the minimum, median, 95<sup>th</sup> percentile and maximum values of the occupancy-weighted average B-factor per residue. The column labelled ‘Q < 0.9’ lists the number of (and percentage) of residues with an average occupancy less than 0.9.

Mol	Chain	Analysed	<RSRZ>	#RSRZ>2	OWAB(Å <sup>2</sup> )	Q<0.9
1	A	346/377 (91%)	-0.48	2 (0%) 89 89	10, 18, 30, 43	0
1	B	346/377 (91%)	-0.35	6 (1%) 70 69	13, 21, 34, 43	0
All	All	692/754 (91%)	-0.41	8 (1%) 79 79	10, 20, 32, 43	0

All (8) RSRZ outliers are listed below:

Mol	Chain	Res	Type	RSRZ
1	B	144	LEU	3.9
1	B	114	ASN	3.8
1	A	333	ARG	3.5
1	B	333	ARG	3.0
1	A	370	ILE	2.5
1	B	141	ALA	2.5
1	B	142	SER	2.3
1	B	370	ILE	2.3

### 6.2 Non-standard residues in protein, DNA, RNA chains [i](#)

There are no non-standard protein/DNA/RNA residues in this entry.

### 6.3 Carbohydrates [i](#)

There are no carbohydrates in this entry.

### 6.4 Ligands [i](#)

In the following table, the Atoms column lists the number of modelled atoms in the group and the number defined in the chemical component dictionary. The B-factors column lists the minimum,



median, 95<sup>th</sup> percentile and maximum values of B factors of atoms in the group. The column labelled 'Q< 0.9' lists the number of atoms with occupancy less than 0.9.

Mol	Type	Chain	Res	Atoms	RSCC	RSR	B-factors(Å <sup>2</sup> )	Q<0.9
4	17N	A	405	25/25	0.62	0.27	52,58,60,60	0
4	17N	B	404	25/25	0.70	0.19	45,48,51,53	0
4	17N	A	404	25/25	0.81	0.19	25,28,34,38	0
5	GOL	B	405	6/6	0.85	0.13	40,41,42,43	0
3	MG	B	402	1/1	0.95	0.06	33,33,33,33	0
2	PRP	B	401	22/22	0.96	0.12	18,28,33,34	0
2	PRP	A	401	22/22	0.98	0.10	10,18,20,21	0
3	MG	A	403	1/1	0.99	0.07	22,22,22,22	0
3	MG	A	402	1/1	0.99	0.07	15,15,15,15	0
3	MG	B	403	1/1	0.99	0.05	16,16,16,16	0

## 6.5 Other polymers ⓘ

There are no such residues in this entry.