



# Full wwPDB X-ray Structure Validation Report ⓘ

Mar 14, 2018 – 05:06 am GMT

PDB ID : 4RDK  
Title : Crystal structure of Norovirus Boxer P domain in complex with Lewis b tetrasaccharide  
Authors : Hao, N.; Chen, Y.; Xia, M.; Liu, W.; Tan, M.; Jiang, X.; Li, X.  
Deposited on : 2014-09-19  
Resolution : 1.63 Å(reported)

This is a Full wwPDB X-ray Structure Validation Report for a publicly released PDB entry.

We welcome your comments at [validation@mail.wwpdb.org](mailto:validation@mail.wwpdb.org)

A user guide is available at

<https://www.wwpdb.org/validation/2017/XrayValidationReportHelp>

with specific help available everywhere you see the ⓘ symbol.

---

The following versions of software and data (see [references ⓘ](#)) were used in the production of this report:

MolProbity	:	4.02b-467
Mogul	:	1.7.3 (157068), CSD as539be (2018)
Xtriage (Phenix)	:	1.13
EDS	:	trunk31020
Percentile statistics	:	20171227.v01 (using entries in the PDB archive December 27th 2017)
Refmac	:	5.8.0158
CCP4	:	7.0 (Gargrove)
Ideal geometry (proteins)	:	Engh & Huber (2001)
Ideal geometry (DNA, RNA)	:	Parkinson et al. (1996)
Validation Pipeline (wwPDB-VP)	:	trunk31020

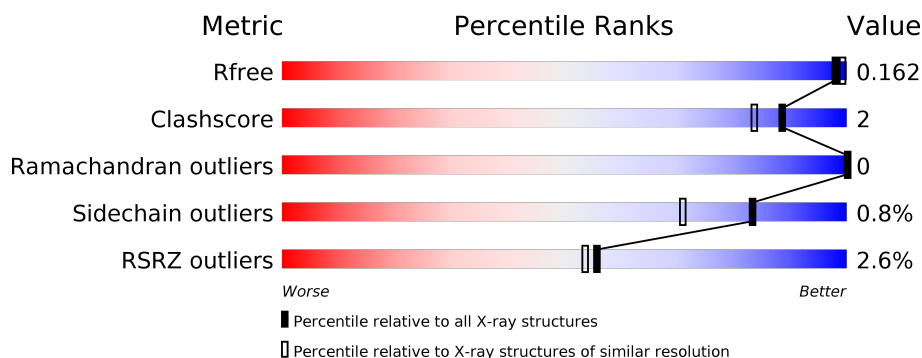
# 1 Overall quality at a glance

The following experimental techniques were used to determine the structure:

## *X-RAY DIFFRACTION*

The reported resolution of this entry is 1.63 Å.

Percentile scores (ranging between 0-100) for global validation metrics of the entry are shown in the following graphic. The table shows the number of entries on which the scores are based.



Metric	Whole archive (#Entries)	Similar resolution (#Entries, resolution range(Å))
$R_{free}$	111664	3975 (1.64-1.60)
Clashscore	122126	4258 (1.64-1.60)
Ramachandran outliers	120053	4162 (1.64-1.60)
Sidechain outliers	120020	4161 (1.64-1.60)
RSRZ outliers	108989	3894 (1.64-1.60)

The table below summarises the geometric issues observed across the polymeric chains and their fit to the electron density. The red, orange, yellow and green segments on the lower bar indicate the fraction of residues that contain outliers for  $\geq 3$ , 2, 1 and 0 types of geometric quality criteria. A grey segment represents the fraction of residues that are not modelled. The numeric value for each fraction is indicated below the corresponding segment, with a dot representing fractions  $\leq 5\%$ . The upper red bar (where present) indicates the fraction of residues that have poor fit to the electron density. The numeric value is given above the bar.

Mol	Chain	Length	Quality of chain
1	A	308	<div> <div>2%</div> <div> <div></div> <div>91%</div> <div>5%</div> </div> </div>
1	B	308	<div> <div>3%</div> <div> <div></div> <div>90%</div> <div>6%</div> <div>5%</div> </div> </div>

## 2 Entry composition

There are 5 unique types of molecules in this entry. The entry contains 5338 atoms, of which 0 are hydrogens and 0 are deuteriums.

In the tables below, the ZeroOcc column contains the number of atoms modelled with zero occupancy, the AltConf column contains the number of residues with at least one atom in alternate conformation and the Trace column contains the number of residues modelled with at most 2 atoms.

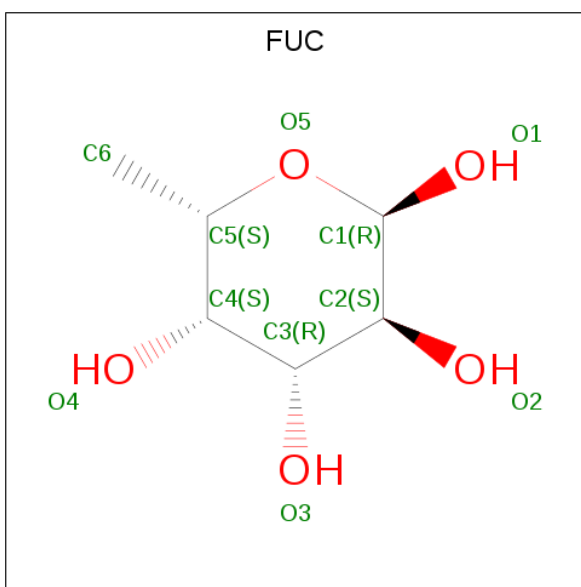
- Molecule 1 is a protein called Capsid.

Mol	Chain	Residues	Atoms					ZeroOcc	AltConf	Trace
1	A	293	Total	C	N	O	S	0	0	0
			2270	1448	380	429	13			
1	B	294	Total	C	N	O	S	0	0	0
			2282	1454	383	432	13			

There are 16 discrepancies between the modelled and reference sequences:

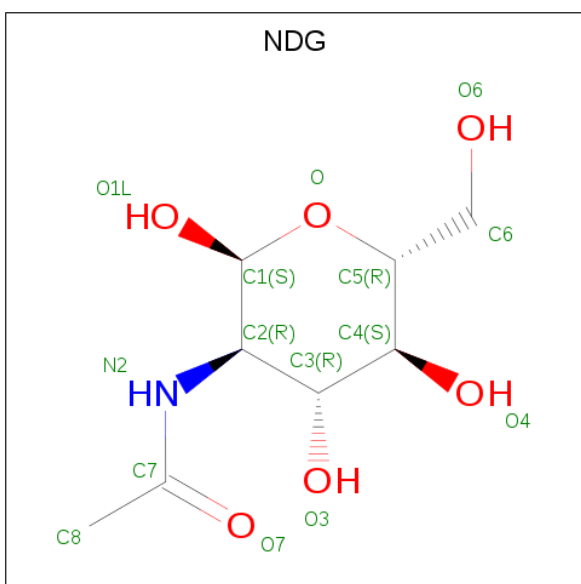
Chain	Residue	Modelled	Actual	Comment	Reference
A	219	GLY	-	EXPRESSION TAG	UNP Q8BCA3
A	220	PRO	-	EXPRESSION TAG	UNP Q8BCA3
A	221	LEU	-	EXPRESSION TAG	UNP Q8BCA3
A	222	GLY	-	EXPRESSION TAG	UNP Q8BCA3
A	223	SER	-	EXPRESSION TAG	UNP Q8BCA3
A	224	PRO	-	EXPRESSION TAG	UNP Q8BCA3
A	225	GLU	-	EXPRESSION TAG	UNP Q8BCA3
A	226	PHE	-	EXPRESSION TAG	UNP Q8BCA3
B	219	GLY	-	EXPRESSION TAG	UNP Q8BCA3
B	220	PRO	-	EXPRESSION TAG	UNP Q8BCA3
B	221	LEU	-	EXPRESSION TAG	UNP Q8BCA3
B	222	GLY	-	EXPRESSION TAG	UNP Q8BCA3
B	223	SER	-	EXPRESSION TAG	UNP Q8BCA3
B	224	PRO	-	EXPRESSION TAG	UNP Q8BCA3
B	225	GLU	-	EXPRESSION TAG	UNP Q8BCA3
B	226	PHE	-	EXPRESSION TAG	UNP Q8BCA3

- Molecule 2 is ALPHA-L-FUCOSE (three-letter code: FUC) (formula: C<sub>6</sub>H<sub>12</sub>O<sub>5</sub>).



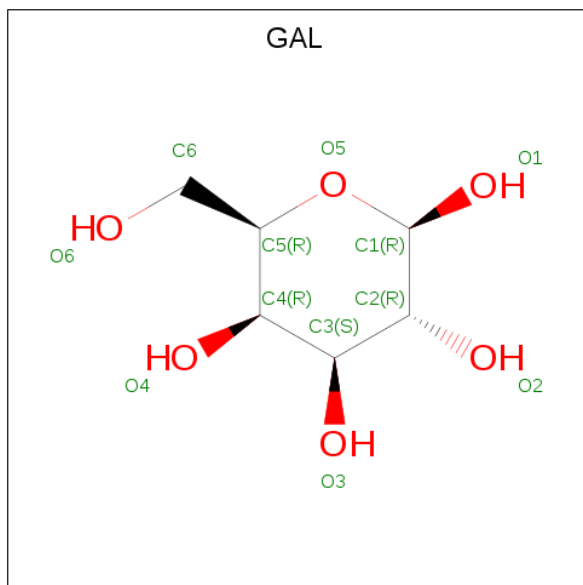
Mol	Chain	Residues	Atoms			ZeroOcc	AltConf
2	A	1	Total	C	O	0	0
			10	6	4		
2	A	1	Total	C	O	0	0
			10	6	4		
2	B	1	Total	C	O	0	0
			10	6	4		
2	B	1	Total	C	O	0	0
			10	6	4		

- Molecule 3 is 2-(ACETYLAMINO)-2-DEOXY-A-D-GLUCOPYRANOSE (three-letter code: NDG) (formula:  $C_8H_{15}NO_6$ ).



Mol	Chain	Residues	Atoms				ZeroOcc	AltConf
3	A	1	Total	C	N	O	0	0
			15	8	1	6		
3	B	1	Total	C	N	O	0	0
			15	8	1	6		

- Molecule 4 is BETA-D-GALACTOSE (three-letter code: GAL) (formula: C<sub>6</sub>H<sub>12</sub>O<sub>6</sub>).



Mol	Chain	Residues	Atoms			ZeroOcc	AltConf
4	A	1	Total	C	O	0	0
			11	6	5		
4	B	1	Total	C	O	0	0
			11	6	5		

- Molecule 5 is water.

Mol	Chain	Residues	Atoms		ZeroOcc	AltConf
5	A	352	Total	O	0	0
			352	352		
5	B	342	Total	O	0	0
			342	342		

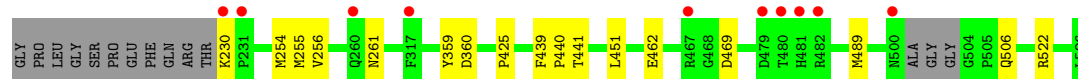
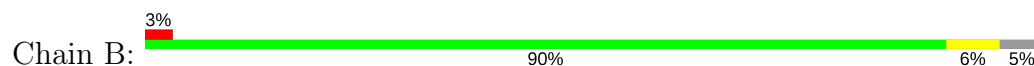
### 3 Residue-property plots [i](#)

These plots are drawn for all protein, RNA and DNA chains in the entry. The first graphic for a chain summarises the proportions of the various outlier classes displayed in the second graphic. The second graphic shows the sequence view annotated by issues in geometry and electron density. Residues are color-coded according to the number of geometric quality criteria for which they contain at least one outlier: green = 0, yellow = 1, orange = 2 and red = 3 or more. A red dot above a residue indicates a poor fit to the electron density ( $RSRZ > 2$ ). Stretches of 2 or more consecutive residues without any outlier are shown as a green connector. Residues present in the sample, but not in the model, are shown in grey.

#### • Molecule 1: Capsid



#### • Molecule 1: Capsid



## 4 Data and refinement statistics

Property	Value	Source
Space group	P 61	Depositor
Cell constants a, b, c, $\alpha$ , $\beta$ , $\gamma$	139.87Å 139.87Å 64.79Å 90.00° 90.00° 120.00°	Depositor
Resolution (Å)	31.30 – 1.63 31.29 – 1.63	Depositor EDS
% Data completeness (in resolution range)	100.0 (31.30-1.63) 100.0 (31.29-1.63)	Depositor EDS
$R_{merge}$	0.08	Depositor
$R_{sym}$	(Not available)	Depositor
$\langle I/\sigma(I) \rangle$ <sup>1</sup>	3.24 (at 1.63Å)	Xtriage
Refinement program	PHENIX (phenix.refine: 1.7_650)	Depositor
R, $R_{free}$	0.131 , 0.167 0.127 , 0.162	Depositor DCC
$R_{free}$ test set	4527 reflections (5.02%)	wwPDB-VP
Wilson B-factor (Å <sup>2</sup> )	21.7	Xtriage
Anisotropy	0.122	Xtriage
Bulk solvent $k_{sol}$ (e/Å <sup>3</sup> ), $B_{sol}$ (Å <sup>2</sup> )	0.33 , 45.6	EDS
L-test for twinning <sup>2</sup>	$\langle  L  \rangle = 0.50$ , $\langle L^2 \rangle = 0.33$	Xtriage
Estimated twinning fraction	0.022 for h,-h-k,-l	Xtriage
$F_o, F_c$ correlation	0.98	EDS
Total number of atoms	5338	wwPDB-VP
Average B, all atoms (Å <sup>2</sup> )	27.0	wwPDB-VP

Xtriage's analysis on translational NCS is as follows: *The largest off-origin peak in the Patterson function is 3.22% of the height of the origin peak. No significant pseudotranslation is detected.*

<sup>1</sup>Intensities estimated from amplitudes.

<sup>2</sup>Theoretical values of  $\langle |L| \rangle$ ,  $\langle L^2 \rangle$  for acentric reflections are 0.5, 0.333 respectively for untwinned datasets, and 0.375, 0.2 for perfectly twinned datasets.

## 5 Model quality

### 5.1 Standard geometry

Bond lengths and bond angles in the following residue types are not validated in this section: GAL, FUC, NDG

The Z score for a bond length (or angle) is the number of standard deviations the observed value is removed from the expected value. A bond length (or angle) with  $|Z| > 5$  is considered an outlier worth inspection. RMSZ is the root-mean-square of all Z scores of the bond lengths (or angles).

Mol	Chain	Bond lengths		Bond angles	
		RMSZ	# Z  >5	RMSZ	# Z  >5
1	A	0.33	0/2335	0.52	0/3192
1	B	0.30	0/2348	0.50	0/3211
All	All	0.31	0/4683	0.51	0/6403

There are no bond length outliers.

There are no bond angle outliers.

There are no chirality outliers.

There are no planarity outliers.

### 5.2 Too-close contacts

In the following table, the Non-H and H(model) columns list the number of non-hydrogen atoms and hydrogen atoms in the chain respectively. The H(added) column lists the number of hydrogen atoms added and optimized by MolProbity. The Clashes column lists the number of clashes within the asymmetric unit, whereas Symm-Clashes lists symmetry related clashes.

Mol	Chain	Non-H	H(model)	H(added)	Clashes	Symm-Clashes
1	A	2270	0	2182	7	0
1	B	2282	0	2192	12	0
2	A	20	0	20	0	0
2	B	20	0	20	0	0
3	A	15	0	13	0	0
3	B	15	0	13	0	0
4	A	11	0	9	0	0
4	B	11	0	9	0	0
5	A	352	0	0	0	0
5	B	342	0	0	1	0
All	All	5338	0	4458	19	0



The all-atom clashscore is defined as the number of clashes found per 1000 atoms (including hydrogen atoms). The all-atom clashscore for this structure is 2.

All (19) close contacts within the same asymmetric unit are listed below, sorted by their clash magnitude.

Atom-1	Atom-2	Interatomic distance (Å)	Clash overlap (Å)
1:B:506:GLN:HG2	5:B:1013:HOH:O	1.94	0.68
1:B:255:MET:HA	1:B:506:GLN:HG3	1.77	0.66
1:A:259:ASP:C	1:A:259:ASP:OD2	2.38	0.61
1:B:230:LYS:HD2	1:B:462:GLU:O	2.07	0.55
1:B:451:LEU:HD21	1:B:489:MET:HE2	1.92	0.52
1:B:439:PHE:CG	1:B:440:PRO:HD2	2.47	0.49
1:B:261:ASN:HA	1:B:425:PRO:HG2	1.94	0.48
1:B:254:MET:O	1:B:506:GLN:HG3	2.14	0.48
1:A:489:MET:HG2	1:A:495:MET:HB3	1.98	0.46
1:B:469:ASP:HB3	1:B:522:ARG:HB2	1.97	0.46
1:B:451:LEU:HD21	1:B:489:MET:CE	2.45	0.45
1:A:439:PHE:CG	1:A:440:PRO:HD2	2.51	0.45
1:A:498:VAL:HG23	1:A:526:LEU:HB2	1.97	0.45
1:B:359:TYR:O	1:B:360:ASP:HB2	2.18	0.43
1:A:320:PRO:HA	1:A:416:ALA:HB1	2.01	0.42
1:B:256:VAL:H	1:B:506:GLN:NE2	2.18	0.41
1:A:474:HIS:CD2	1:A:486:GLU:HG2	2.56	0.40
1:B:439:PHE:CD1	1:B:440:PRO:HD2	2.56	0.40
1:A:473:LEU:HD11	1:A:489:MET:HG3	2.04	0.40

There are no symmetry-related clashes.

## 5.3 Torsion angles [i](#)

### 5.3.1 Protein backbone [i](#)

In the following table, the Percentiles column shows the percent Ramachandran outliers of the chain as a percentile score with respect to all X-ray entries followed by that with respect to entries of similar resolution.

The Analysed column shows the number of residues for which the backbone conformation was analysed, and the total number of residues.

Mol	Chain	Analysed	Favoured	Allowed	Outliers	Percentiles	
1	A	287/308 (93%)	278 (97%)	9 (3%)	0	100	100
1	B	290/308 (94%)	282 (97%)	8 (3%)	0	100	100

*Continued on next page...*

*Continued from previous page...*

Mol	Chain	Analysed	Favoured	Allowed	Outliers	Percentiles	
All	All	577/616 (94%)	560 (97%)	17 (3%)	0	100	100

There are no Ramachandran outliers to report.

### 5.3.2 Protein sidechains ⓘ

In the following table, the Percentiles column shows the percent sidechain outliers of the chain as a percentile score with respect to all X-ray entries followed by that with respect to entries of similar resolution.

The Analysed column shows the number of residues for which the sidechain conformation was analysed, and the total number of residues.

Mol	Chain	Analysed	Rotameric	Outliers	Percentiles	
1	A	253/264 (96%)	250 (99%)	3 (1%)	74	54
1	B	255/264 (97%)	254 (100%)	1 (0%)	92	85
All	All	508/528 (96%)	504 (99%)	4 (1%)	83	71

All (4) residues with a non-rotameric sidechain are listed below:

Mol	Chain	Res	Type
1	A	259	ASP
1	A	418	GLN
1	A	441	THR
1	B	441	THR

Some sidechains can be flipped to improve hydrogen bonding and reduce clashes. All (2) such sidechains are listed below:

Mol	Chain	Res	Type
1	A	418	GLN
1	B	474	HIS

### 5.3.3 RNA ⓘ

There are no RNA molecules in this entry.

## 5.4 Non-standard residues in protein, DNA, RNA chains [i](#)

There are no non-standard protein/DNA/RNA residues in this entry.

## 5.5 Carbohydrates [i](#)

There are no carbohydrates in this entry.

## 5.6 Ligand geometry [i](#)

8 ligands are modelled in this entry.

In the following table, the Counts columns list the number of bonds (or angles) for which Mogul statistics could be retrieved, the number of bonds (or angles) that are observed in the model and the number of bonds (or angles) that are defined in the Chemical Component Dictionary. The Link column lists molecule types, if any, to which the group is linked. The Z score for a bond length (or angle) is the number of standard deviations the observed value is removed from the expected value. A bond length (or angle) with  $|Z| > 2$  is considered an outlier worth inspection. RMSZ is the root-mean-square of all Z scores of the bond lengths (or angles).

Mol	Type	Chain	Res	Link	Bond lengths			Bond angles		
					Counts	RMSZ	# $ Z  > 2$	Counts	RMSZ	# $ Z  > 2$
2	FUC	A	601	3	9,10,11	2.43	2 (22%)	13,14,16	0.74	0
3	NDG	A	602	2,4	15,15,15	2.03	7 (46%)	21,21,21	1.11	1 (4%)
4	GAL	A	603	3,2	11,11,12	2.26	3 (27%)	15,15,17	0.96	1 (6%)
2	FUC	A	604	4	9,10,11	1.82	2 (22%)	13,14,16	0.55	0
2	FUC	B	601	3	9,10,11	2.55	2 (22%)	13,14,16	0.74	0
3	NDG	B	602	2,4	15,15,15	2.03	7 (46%)	21,21,21	1.14	2 (9%)
4	GAL	B	603	3,2	11,11,12	2.37	3 (27%)	15,15,17	0.86	0
2	FUC	B	604	4	9,10,11	1.88	2 (22%)	13,14,16	0.72	0

In the following table, the Chirals column lists the number of chiral outliers, the number of chiral centers analysed, the number of these observed in the model and the number defined in the Chemical Component Dictionary. Similar counts are reported in the Torsion and Rings columns. '-' means no outliers of that kind were identified.

Mol	Type	Chain	Res	Link	Chirals	Torsions	Rings
2	FUC	A	601	3	-	0/0/17/20	0/1/1/1
3	NDG	A	602	2,4	-	0/6/26/26	0/1/1/1
4	GAL	A	603	3,2	-	0/2/19/22	0/1/1/1
2	FUC	A	604	4	-	0/0/17/20	0/1/1/1
2	FUC	B	601	3	-	0/0/17/20	0/1/1/1

*Continued on next page...*

*Continued from previous page...*

Mol	Type	Chain	Res	Link	Chirals	Torsions	Rings
3	NDG	B	602	2,4	-	0/6/26/26	0/1/1/1
4	GAL	B	603	3,2	-	0/2/19/22	0/1/1/1
2	FUC	B	604	4	-	0/0/17/20	0/1/1/1

All (28) bond length outliers are listed below:

Mol	Chain	Res	Type	Atoms	Z	Observed(Å)	Ideal(Å)
4	B	603	GAL	C2-C3	-6.18	1.43	1.52
2	B	601	FUC	C2-C3	-5.86	1.43	1.52
4	A	603	GAL	C2-C3	-5.82	1.43	1.52
2	A	601	FUC	C2-C3	-5.61	1.44	1.52
3	B	602	NDG	C4-C3	-3.62	1.43	1.52
3	A	602	NDG	C4-C3	-3.51	1.43	1.52
2	B	604	FUC	C4-C3	-3.34	1.43	1.52
2	A	604	FUC	C4-C3	-3.27	1.43	1.52
3	B	602	NDG	C3-C2	-3.10	1.47	1.53
3	A	602	NDG	C3-C2	-2.98	1.47	1.53
2	B	604	FUC	C2-C3	-2.43	1.48	1.52
2	A	604	FUC	C2-C3	-2.39	1.49	1.52
3	A	602	NDG	C1-C2	-2.23	1.50	1.52
3	B	602	NDG	C1-C2	-2.08	1.50	1.52
4	A	603	GAL	O2-C2	2.02	1.47	1.43
4	B	603	GAL	O2-C2	2.13	1.48	1.43
3	B	602	NDG	O4-C4	2.46	1.49	1.43
3	A	602	NDG	C7-N2	2.59	1.43	1.34
3	A	602	NDG	O4-C4	2.60	1.49	1.43
3	B	602	NDG	C7-N2	2.64	1.43	1.34
3	A	602	NDG	C2-N2	2.65	1.50	1.45
3	B	602	NDG	C2-N2	2.73	1.50	1.45
3	A	602	NDG	O3-C3	2.96	1.50	1.43
3	B	602	NDG	O3-C3	2.97	1.50	1.43
4	A	603	GAL	O5-C1	3.36	1.49	1.43
4	B	603	GAL	O5-C1	3.46	1.49	1.43
2	A	601	FUC	O5-C1	3.69	1.49	1.43
2	B	601	FUC	O5-C1	4.00	1.50	1.43

All (4) bond angle outliers are listed below:

Mol	Chain	Res	Type	Atoms	Z	Observed(°)	Ideal(°)
3	B	602	NDG	C1-C2-N2	-2.02	108.39	110.73
3	B	602	NDG	C1-C2-C3	2.02	113.30	110.54
4	A	603	GAL	C1-C2-C3	2.20	112.44	109.66

*Continued on next page...*

*Continued from previous page...*

Mol	Chain	Res	Type	Atoms	Z	Observed(°)	Ideal(°)
3	A	602	NDG	O-C1-C2	2.48	112.01	109.52

There are no chirality outliers.

There are no torsion outliers.

There are no ring outliers.

No monomer is involved in short contacts.

## 5.7 Other polymers [i](#)

There are no such residues in this entry.

## 5.8 Polymer linkage issues [i](#)

There are no chain breaks in this entry.

## 6 Fit of model and data [i](#)

### 6.1 Protein, DNA and RNA chains [i](#)

In the following table, the column labelled ‘#RSRZ > 2’ contains the number (and percentage) of RSRZ outliers, followed by percent RSRZ outliers for the chain as percentile scores relative to all X-ray entries and entries of similar resolution. The OWAB column contains the minimum, median, 95<sup>th</sup> percentile and maximum values of the occupancy-weighted average B-factor per residue. The column labelled ‘Q < 0.9’ lists the number of (and percentage) of residues with an average occupancy less than 0.9.

Mol	Chain	Analysed	<RSRZ>	#RSRZ>2	OWAB(Å <sup>2</sup> )	Q<0.9
1	A	293/308 (95%)	-0.41	5 (1%) 70 68	16, 21, 42, 70	0
1	B	294/308 (95%)	-0.30	10 (3%) 45 41	16, 23, 42, 70	0
All	All	587/616 (95%)	-0.35	15 (2%) 56 54	16, 22, 42, 70	0

All (15) RSRZ outliers are listed below:

Mol	Chain	Res	Type	RSRZ
1	A	317	PHE	6.1
1	A	504	GLY	5.6
1	B	480	THR	4.7
1	B	230	LYS	4.4
1	B	500	ASN	4.4
1	B	317	PHE	4.3
1	B	479	ASP	4.1
1	B	482	ARG	3.6
1	A	505	PRO	3.2
1	A	506	GLN	2.6
1	B	467	ARG	2.6
1	B	481	HIS	2.5
1	B	231	PRO	2.3
1	A	300	GLY	2.1
1	B	260	GLN	2.1

### 6.2 Non-standard residues in protein, DNA, RNA chains [i](#)

There are no non-standard protein/DNA/RNA residues in this entry.

### 6.3 Carbohydrates [i](#)

There are no carbohydrates in this entry.

## 6.4 Ligands [i](#)

In the following table, the Atoms column lists the number of modelled atoms in the group and the number defined in the chemical component dictionary. The B-factors column lists the minimum, median, 95<sup>th</sup> percentile and maximum values of B factors of atoms in the group. The column labelled 'Q< 0.9' lists the number of atoms with occupancy less than 0.9.

Mol	Type	Chain	Res	Atoms	RSCC	RSR	B-factors( $\text{\AA}^2$ )	Q<0.9
2	FUC	B	601	10/11	0.87	0.11	24,27,30,30	0
3	NDG	B	602	15/15	0.92	0.17	28,36,38,43	0
2	FUC	A	601	10/11	0.92	0.07	21,22,24,24	0
3	NDG	A	602	15/15	0.93	0.13	22,29,38,38	0
4	GAL	B	603	11/12	0.95	0.10	24,26,28,33	0
2	FUC	B	604	10/11	0.95	0.08	28,29,31,31	0
2	FUC	A	604	10/11	0.96	0.08	23,25,26,28	0
4	GAL	A	603	11/12	0.96	0.06	21,23,25,28	0

## 6.5 Other polymers [i](#)

There are no such residues in this entry.