



# wwPDB X-ray Structure Validation Summary Report ⓘ

Mar 14, 2018 – 08:17 am GMT

PDB ID : 3RV7  
Title : Structure of a M. tuberculosis Salicylate Synthase, MbtI, in Complex with an Inhibitor with Isopropyl R-Group  
Authors : Chi, G.; Bulloch, E.M.M.; Manos-Turvey, A.; Payne, R.J.; Lott, J.S.; TB Structural Genomics Consortium (TBSGC)  
Deposited on : 2011-05-06  
Resolution : 2.50 Å(reported)

This is a wwPDB X-ray Structure Validation Summary Report for a publicly released PDB entry.

We welcome your comments at [validation@mail.wwpdb.org](mailto:validation@mail.wwpdb.org)

A user guide is available at

<https://www.wwpdb.org/validation/2017/XrayValidationReportHelp>

with specific help available everywhere you see the ⓘ symbol.

---

The following versions of software and data (see [references ⓘ](#)) were used in the production of this report:

MolProbity	:	4.02b-467
Mogul	:	1.7.3 (157068), CSD as539be (2018)
Xtriage (Phenix)	:	1.13
EDS	:	trunk31020
Percentile statistics	:	20171227.v01 (using entries in the PDB archive December 27th 2017)
Refmac	:	5.8.0158
CCP4	:	7.0 (Gargrove)
Ideal geometry (proteins)	:	Engh & Huber (2001)
Ideal geometry (DNA, RNA)	:	Parkinson et al. (1996)
Validation Pipeline (wwPDB-VP)	:	trunk31020

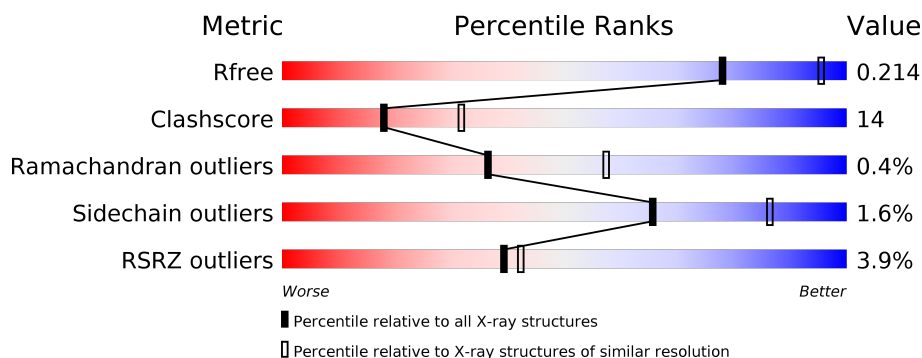
# 1 Overall quality at a glance

The following experimental techniques were used to determine the structure:

*X-RAY DIFFRACTION*

The reported resolution of this entry is 2.50 Å.

Percentile scores (ranging between 0-100) for global validation metrics of the entry are shown in the following graphic. The table shows the number of entries on which the scores are based.



Metric	Whole archive (#Entries)	Similar resolution (#Entries, resolution range(Å))
$R_{free}$	111664	4155 (2.50-2.50)
Clashscore	122126	4827 (2.50-2.50)
Ramachandran outliers	120053	4735 (2.50-2.50)
Sidechain outliers	120020	4737 (2.50-2.50)
RSRZ outliers	108989	4058 (2.50-2.50)

The table below summarises the geometric issues observed across the polymeric chains and their fit to the electron density. The red, orange, yellow and green segments on the lower bar indicate the fraction of residues that contain outliers for  $\geq 3$ , 2, 1 and 0 types of geometric quality criteria. A grey segment represents the fraction of residues that are not modelled. The numeric value for each fraction is indicated below the corresponding segment, with a dot representing fractions  $\leq 5\%$ . The upper red bar (where present) indicates the fraction of residues that have poor fit to the electron density. The numeric value is given above the bar.

Mol	Chain	Length	Quality of chain
1	A	450	<div> <div>2%</div> <div>68% 23% 8%</div> </div>
1	B	450	<div> <div>3%</div> <div>71% 22% 6%</div> </div>
1	C	450	<div> <div>5%</div> <div>68% 26% 5%</div> </div>
1	D	450	<div> <div>5%</div> <div>74% 19% 5%</div> </div>

The following table lists non-polymeric compounds, carbohydrate monomers and non-standard residues in protein, DNA, RNA chains that are outliers for geometric or electron-density-fit crite-

ria:

Mol	Type	Chain	Res	Chirality	Geometry	Clashes	Electron density
2	RVB	A	451	-	-	X	-

## 2 Entry composition

There are 3 unique types of molecules in this entry. The entry contains 13371 atoms, of which 0 are hydrogens and 0 are deuteriums.

In the tables below, the ZeroOcc column contains the number of atoms modelled with zero occupancy, the AltConf column contains the number of residues with at least one atom in alternate conformation and the Trace column contains the number of residues modelled with at most 2 atoms.

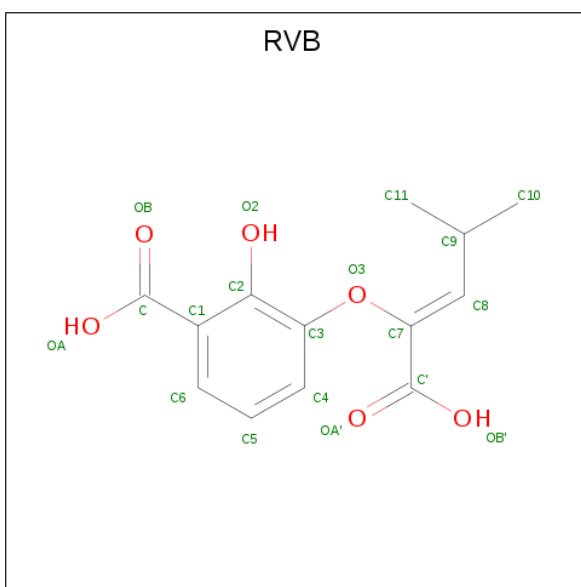
- Molecule 1 is a protein called Isochorismate synthase/isochorismate-pyruvate lyase mbtI.

Mol	Chain	Residues	Atoms					ZeroOcc	AltConf	Trace
1	A	416	Total	C	N	O	S	0	2	0
			3151	1981	559	601	10			
1	B	423	Total	C	N	O	S	0	1	0
			3211	2012	580	609	10			
1	C	431	Total	C	N	O	S	0	0	0
			3254	2036	588	620	10			
1	D	428	Total	C	N	O	S	0	0	0
			3222	2021	571	620	10			

There are 4 discrepancies between the modelled and reference sequences:

Chain	Residue	Modelled	Actual	Comment	Reference
A	1	VAL	-	EXPRESSION TAG	UNP Q7D785
B	1	VAL	-	EXPRESSION TAG	UNP Q7D785
C	1	VAL	-	EXPRESSION TAG	UNP Q7D785
D	1	VAL	-	EXPRESSION TAG	UNP Q7D785

- Molecule 2 is 3-([(1Z)-1-carboxy-3-methylbut-1-en-1-yl]oxy}-2-hydroxybenzoic acid (three-letter code: RVB) (formula: C<sub>13</sub>H<sub>14</sub>O<sub>6</sub>).



Mol	Chain	Residues	Atoms			ZeroOcc	AltConf
2	A	1	Total	C	O	0	0
			19	13	6		
2	B	1	Total	C	O	0	0
			19	13	6		
2	C	1	Total	C	O	4	0
			19	13	6		
2	D	1	Total	C	O	0	0
			19	13	6		

- Molecule 3 is water.

Mol	Chain	Residues	Atoms		ZeroOcc	AltConf
3	A	121	Total	O	0	0
			121	121		
3	B	118	Total	O	0	0
			118	118		
3	C	115	Total	O	0	0
			115	115		
3	D	103	Total	O	0	0
			103	103		

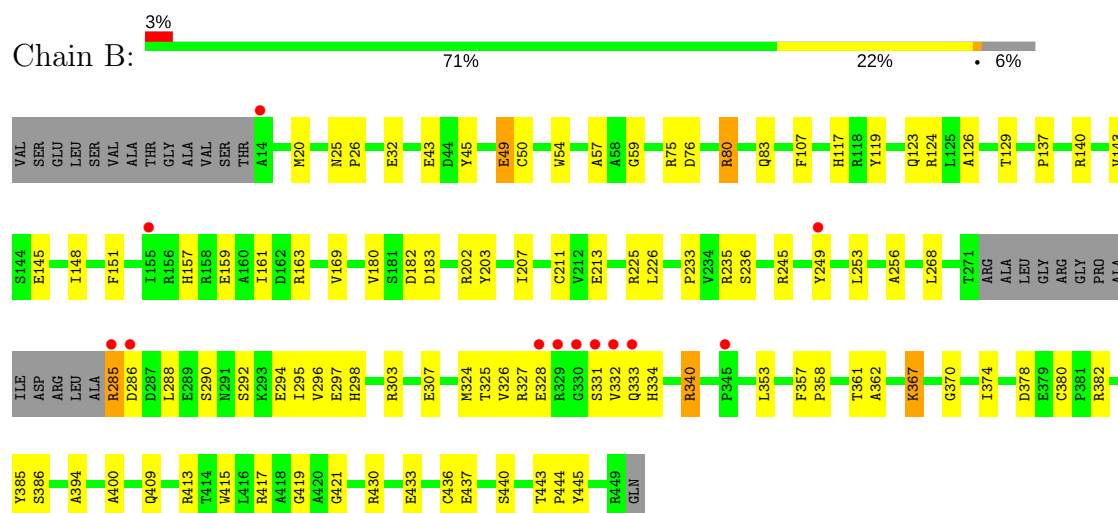
### 3 Residue-property plots

These plots are drawn for all protein, RNA and DNA chains in the entry. The first graphic for a chain summarises the proportions of the various outlier classes displayed in the second graphic. The second graphic shows the sequence view annotated by issues in geometry and electron density. Residues are color-coded according to the number of geometric quality criteria for which they contain at least one outlier: green = 0, yellow = 1, orange = 2 and red = 3 or more. A red dot above a residue indicates a poor fit to the electron density ( $RSRZ > 2$ ). Stretches of 2 or more consecutive residues without any outlier are shown as a green connector. Residues present in the sample, but not in the model, are shown in grey.

- Molecule 1: Isochorismate synthase/isochorismate-pyruvate lyase mbtI



- Molecule 1: Isochorismate synthase/isochorismate-pyruvate lyase mbtI



- Molecule 1: Isochorismate synthase/isochorismate-pyruvate lyase mbtI





## 4 Data and refinement statistics

Property	Value	Source
Space group	P 1 21 1	Depositor
Cell constants a, b, c, $\alpha$ , $\beta$ , $\gamma$	86.67Å 113.94Å 95.23Å 90.00° 91.41° 90.00°	Depositor
Resolution (Å)	19.78 – 2.50 19.78 – 2.50	Depositor EDS
% Data completeness (in resolution range)	(Not available) (19.78-2.50) 99.7 (19.78-2.50)	Depositor EDS
$R_{merge}$	(Not available)	Depositor
$R_{sym}$	(Not available)	Depositor
$\langle I/\sigma(I) \rangle$ <sup>1</sup>	2.48 (at 2.50Å)	Xtriage
Refinement program	BUSTER 2.8.0	Depositor
R, $R_{free}$	0.184 , 0.222 0.198 , 0.214	Depositor DCC
$R_{free}$ test set	3224 reflections (5.06%)	wwPDB-VP
Wilson B-factor (Å <sup>2</sup> )	38.0	Xtriage
Anisotropy	0.471	Xtriage
Bulk solvent $k_{sol}$ (e/Å <sup>3</sup> ), $B_{sol}$ (Å <sup>2</sup> )	0.36 , 67.7	EDS
L-test for twinning <sup>2</sup>	$\langle  L  \rangle = 0.48$ , $\langle L^2 \rangle = 0.31$	Xtriage
Estimated twinning fraction	0.034 for h,-k,-l	Xtriage
$F_o, F_c$ correlation	0.94	EDS
Total number of atoms	13371	wwPDB-VP
Average B, all atoms (Å <sup>2</sup> )	43.0	wwPDB-VP

Xtriage's analysis on translational NCS is as follows: *The largest off-origin peak in the Patterson function is 3.27% of the height of the origin peak. No significant pseudotranslation is detected.*

<sup>1</sup>Intensities estimated from amplitudes.

<sup>2</sup>Theoretical values of  $\langle |L| \rangle$ ,  $\langle L^2 \rangle$  for acentric reflections are 0.5, 0.333 respectively for untwinned datasets, and 0.375, 0.2 for perfectly twinned datasets.



## 5 Model quality [i](#)

### 5.1 Standard geometry [i](#)

Bond lengths and bond angles in the following residue types are not validated in this section: RVB

The Z score for a bond length (or angle) is the number of standard deviations the observed value is removed from the expected value. A bond length (or angle) with  $|Z| > 5$  is considered an outlier worth inspection. RMSZ is the root-mean-square of all Z scores of the bond lengths (or angles).

Mol	Chain	Bond lengths		Bond angles	
		RMSZ	$\# Z  > 5$	RMSZ	$\# Z  > 5$
1	A	1.59	7/3213 (0.2%)	0.80	0/4370
1	B	1.53	6/3270 (0.2%)	0.79	1/4444 (0.0%)
1	C	1.51	6/3311 (0.2%)	0.77	2/4501 (0.0%)
1	D	1.49	4/3278 (0.1%)	0.78	0/4459
All	All	1.53	23/13072 (0.2%)	0.78	3/17774 (0.0%)

Chiral center outliers are detected by calculating the chiral volume of a chiral center and verifying if the center is modelled as a planar moiety or with the opposite hand. A planarity outlier is detected by checking planarity of atoms in a peptide group, atoms in a mainchain group or atoms of a sidechain that are expected to be planar.

Mol	Chain	#Chirality outliers	#Planarity outliers
1	A	0	2

The worst 5 of 23 bond length outliers are listed below:

Mol	Chain	Res	Type	Atoms	Z	Observed(Å)	Ideal(Å)
1	C	249	TYR	CD1-CE1	-6.39	1.29	1.39
1	B	119	TYR	CD1-CE1	-5.96	1.30	1.39
1	C	380	CYS	CB-SG	-5.91	1.72	1.81
1	B	50	CYS	CB-SG	-5.91	1.72	1.81
1	B	45	TYR	CD1-CE1	-5.78	1.30	1.39

All (3) bond angle outliers are listed below:

Mol	Chain	Res	Type	Atoms	Z	Observed(°)	Ideal(°)
1	B	124	ARG	NE-CZ-NH1	5.22	122.91	120.30
1	C	20	MET	C-N-CD	-5.21	109.15	120.60
1	C	44	ASP	CB-CG-OD1	5.04	122.84	118.30

There are no chirality outliers.

All (2) planarity outliers are listed below:

Mol	Chain	Res	Type	Group
1	A	182[A]	ASP	Mainchain
1	A	182[B]	ASP	Mainchain

## 5.2 Too-close contacts

In the following table, the Non-H and H(model) columns list the number of non-hydrogen atoms and hydrogen atoms in the chain respectively. The H(added) column lists the number of hydrogen atoms added and optimized by MolProbity. The Clashes column lists the number of clashes within the asymmetric unit, whereas Symm-Clashes lists symmetry related clashes.

Mol	Chain	Non-H	H(model)	H(added)	Clashes	Symm-Clashes
1	A	3151	0	3107	90	0
1	B	3211	0	3191	89	0
1	C	3254	0	3209	110	0
1	D	3222	0	3164	82	0
2	A	19	0	11	11	0
2	B	19	0	11	4	0
2	C	19	0	11	2	0
2	D	19	0	11	6	0
3	A	121	0	0	4	0
3	B	118	0	0	5	0
3	C	115	0	0	0	0
3	D	103	0	0	0	0
All	All	13371	0	12715	371	0

The all-atom clashscore is defined as the number of clashes found per 1000 atoms (including hydrogen atoms). The all-atom clashscore for this structure is 14.

The worst 5 of 371 close contacts within the same asymmetric unit are listed below, sorted by their clash magnitude.

Atom-1	Atom-2	Interatomic distance (Å)	Clash overlap (Å)
1:A:361:THR:HG21	2:A:451:RVB:C10	1.62	1.27
1:A:361:THR:CG2	2:A:451:RVB:H10	1.69	1.21
1:C:291:ASN:HD22	1:C:294:GLU:HG2	1.05	1.17
1:C:272:ARG:HG3	1:C:284:ALA:HB1	1.24	1.16
1:A:291:ASN:HD22	1:A:294:GLU:HG2	1.12	1.13

There are no symmetry-related clashes.

## 5.3 Torsion angles

### 5.3.1 Protein backbone

In the following table, the Percentiles column shows the percent Ramachandran outliers of the chain as a percentile score with respect to all X-ray entries followed by that with respect to entries of similar resolution.

The Analysed column shows the number of residues for which the backbone conformation was analysed, and the total number of residues.

Mol	Chain	Analysed	Favoured	Allowed	Outliers	Percentiles	
1	A	412/450 (92%)	405 (98%)	4 (1%)	3 (1%)	24	42
1	B	420/450 (93%)	411 (98%)	9 (2%)	0	100	100
1	C	427/450 (95%)	421 (99%)	4 (1%)	2 (0%)	31	51
1	D	424/450 (94%)	415 (98%)	7 (2%)	2 (0%)	31	51
All	All	1683/1800 (94%)	1652 (98%)	24 (1%)	7 (0%)	36	57

5 of 7 Ramachandran outliers are listed below:

Mol	Chain	Res	Type
1	C	271	THR
1	D	329	ARG
1	A	19	PRO
1	C	278	PRO
1	A	271	THR

### 5.3.2 Protein sidechains

In the following table, the Percentiles column shows the percent sidechain outliers of the chain as a percentile score with respect to all X-ray entries followed by that with respect to entries of similar resolution.

The Analysed column shows the number of residues for which the sidechain conformation was analysed, and the total number of residues.

Mol	Chain	Analysed	Rotameric	Outliers	Percentiles	
1	A	324/358 (90%)	318 (98%)	6 (2%)	60	83
1	B	332/358 (93%)	327 (98%)	5 (2%)	67	87
1	C	332/358 (93%)	325 (98%)	7 (2%)	56	81
1	D	329/358 (92%)	326 (99%)	3 (1%)	81	93
All	All	1317/1432 (92%)	1296 (98%)	21 (2%)	65	86

5 of 21 residues with a non-rotameric sidechain are listed below:

Mol	Chain	Res	Type
1	B	340	ARG
1	C	258	ARG
1	C	434	GLU
1	B	285	ARG
1	D	24	VAL

Some sidechains can be flipped to improve hydrogen bonding and reduce clashes. 5 of 14 such sidechains are listed below:

Mol	Chain	Res	Type
1	B	334	HIS
1	C	61	GLN
1	D	230	HIS
1	B	230	HIS
1	C	409	GLN

### 5.3.3 RNA [i](#)

There are no RNA molecules in this entry.

## 5.4 Non-standard residues in protein, DNA, RNA chains [i](#)

There are no non-standard protein/DNA/RNA residues in this entry.

## 5.5 Carbohydrates [i](#)

There are no carbohydrates in this entry.

## 5.6 Ligand geometry [i](#)

4 ligands are modelled in this entry.

In the following table, the Counts columns list the number of bonds (or angles) for which Mogul statistics could be retrieved, the number of bonds (or angles) that are observed in the model and the number of bonds (or angles) that are defined in the Chemical Component Dictionary. The Link column lists molecule types, if any, to which the group is linked. The Z score for a bond length (or angle) is the number of standard deviations the observed value is removed from the expected value. A bond length (or angle) with  $|Z| > 2$  is considered an outlier worth inspection. RMSZ is the root-mean-square of all Z scores of the bond lengths (or angles).

Mol	Type	Chain	Res	Link	Bond lengths			Bond angles		
					Counts	RMSZ	# Z  > 2	Counts	RMSZ	# Z  > 2
2	RVB	A	451	-	12,19,19	1.26	1 (8%)	14,26,26	2.27	2 (14%)
2	RVB	B	451	-	12,19,19	1.54	3 (25%)	14,26,26	2.09	1 (7%)
2	RVB	C	451	-	12,19,19	1.45	3 (25%)	14,26,26	1.53	1 (7%)
2	RVB	D	451	-	12,19,19	1.62	3 (25%)	14,26,26	1.08	1 (7%)

In the following table, the Chirals column lists the number of chiral outliers, the number of chiral centers analysed, the number of these observed in the model and the number defined in the Chemical Component Dictionary. Similar counts are reported in the Torsion and Rings columns. '-' means no outliers of that kind were identified.

Mol	Type	Chain	Res	Link	Chirals	Torsions	Rings
2	RVB	A	451	-	-	0/8/16/16	0/1/1/1
2	RVB	B	451	-	-	0/8/16/16	0/1/1/1
2	RVB	C	451	-	-	0/8/16/16	0/1/1/1
2	RVB	D	451	-	-	0/8/16/16	0/1/1/1

The worst 5 of 10 bond length outliers are listed below:

Mol	Chain	Res	Type	Atoms	Z	Observed(Å)	Ideal(Å)
2	D	451	RVB	C8-C7	-3.40	1.28	1.33
2	C	451	RVB	O3-C3	-3.11	1.34	1.41
2	B	451	RVB	O3-C3	-2.89	1.35	1.41
2	A	451	RVB	C3-C2	-2.88	1.36	1.40
2	D	451	RVB	O3-C3	-2.68	1.35	1.41

All (5) bond angle outliers are listed below:

Mol	Chain	Res	Type	Atoms	Z	Observed(°)	Ideal(°)
2	D	451	RVB	C1-C2-C3	2.55	121.56	120.30
2	A	451	RVB	O3-C3-C4	3.45	127.46	118.81
2	C	451	RVB	C1-C2-C3	4.86	122.70	120.30
2	A	451	RVB	C1-C2-C3	6.90	123.71	120.30
2	B	451	RVB	C1-C2-C3	6.98	123.75	120.30

There are no chirality outliers.

There are no torsion outliers.

There are no ring outliers.

4 monomers are involved in 23 short contacts:

Mol	Chain	Res	Type	Clashes	Symm-Clashes
2	A	451	RVB	11	0
2	B	451	RVB	4	0
2	C	451	RVB	2	0
2	D	451	RVB	6	0

## 5.7 Other polymers [i](#)

There are no such residues in this entry.

## 5.8 Polymer linkage issues [i](#)

There are no chain breaks in this entry.

## 6 Fit of model and data [i](#)

### 6.1 Protein, DNA and RNA chains [i](#)

In the following table, the column labelled ‘#RSRZ > 2’ contains the number (and percentage) of RSRZ outliers, followed by percent RSRZ outliers for the chain as percentile scores relative to all X-ray entries and entries of similar resolution. The OWAB column contains the minimum, median, 95<sup>th</sup> percentile and maximum values of the occupancy-weighted average B-factor per residue. The column labelled ‘Q < 0.9’ lists the number of (and percentage) of residues with an average occupancy less than 0.9.

Mol	Chain	Analysed	<RSRZ>	#RSRZ>2	OWAB(Å <sup>2</sup> )	Q<0.9
1	A	416/450 (92%)	-0.21	8 (1%) 66 69	19, 37, 62, 74	8 (1%)
1	B	423/450 (94%)	-0.18	12 (2%) 53 56	20, 39, 66, 89	8 (1%)
1	C	431/450 (95%)	0.03	24 (5%) 24 26	18, 42, 77, 105	8 (1%)
1	D	428/450 (95%)	0.00	22 (5%) 28 30	22, 44, 74, 88	8 (1%)
All	All	1698/1800 (94%)	-0.09	66 (3%) 39 42	18, 40, 71, 105	32 (1%)

The worst 5 of 66 RSRZ outliers are listed below:

Mol	Chain	Res	Type	RSRZ
1	B	331	SER	6.4
1	C	280	ILE	6.1
1	C	276	ARG	5.9
1	D	79	THR	5.3
1	D	330	GLY	4.9

### 6.2 Non-standard residues in protein, DNA, RNA chains [i](#)

There are no non-standard protein/DNA/RNA residues in this entry.

### 6.3 Carbohydrates [i](#)

There are no carbohydrates in this entry.

### 6.4 Ligands [i](#)

In the following table, the Atoms column lists the number of modelled atoms in the group and the number defined in the chemical component dictionary. The B-factors column lists the minimum, median, 95<sup>th</sup> percentile and maximum values of B factors of atoms in the group. The column labelled ‘Q < 0.9’ lists the number of atoms with occupancy less than 0.9.

Mol	Type	Chain	Res	Atoms	RSCC	RSR	B-factors( $\text{\AA}^2$ )	Q<0.9
2	RVB	D	451	19/19	0.87	0.25	20,20,20,20	0
2	RVB	C	451	19/19	0.90	0.18	20,20,20,20	6
2	RVB	A	451	19/19	0.92	0.23	39,46,64,64	0
2	RVB	B	451	19/19	0.95	0.16	38,45,62,63	0

## 6.5 Other polymers [i](#)

There are no such residues in this entry.