



wwPDB X-ray Structure Validation Summary Report ⓘ

Mar 8, 2018 – 09:51 pm GMT

PDB ID : 3RV8
Title : Structure of a M. tuberculosis Salicylate Synthase, MbtI, in Complex with an Inhibitor with Cyclopropyl R-Group
Authors : Chi, G.; Bulloch, E.M.M.; Manos-Turvey, A.; Payne, R.J.; Lott, J.S.; TB Structural Genomics Consortium (TBSGC)
Deposited on : 2011-05-06
Resolution : 2.29 Å(reported)

This is a wwPDB X-ray Structure Validation Summary Report for a publicly released PDB entry.

We welcome your comments at validation@mail.wwpdb.org

A user guide is available at

<https://www.wwpdb.org/validation/2017/XrayValidationReportHelp>

with specific help available everywhere you see the ⓘ symbol.

The following versions of software and data (see [references ⓘ](#)) were used in the production of this report:

MolProbity	:	4.02b-467
Mogul	:	1.7.3 (157068), CSD as539be (2018)
Xtriage (Phenix)	:	1.13
EDS	:	trunk30967
Percentile statistics	:	20171227.v01 (using entries in the PDB archive December 27th 2017)
Refmac	:	5.8.0158
CCP4	:	7.0 (Gargrove)
Ideal geometry (proteins)	:	Engh & Huber (2001)
Ideal geometry (DNA, RNA)	:	Parkinson et al. (1996)
Validation Pipeline (wwPDB-VP)	:	trunk30967

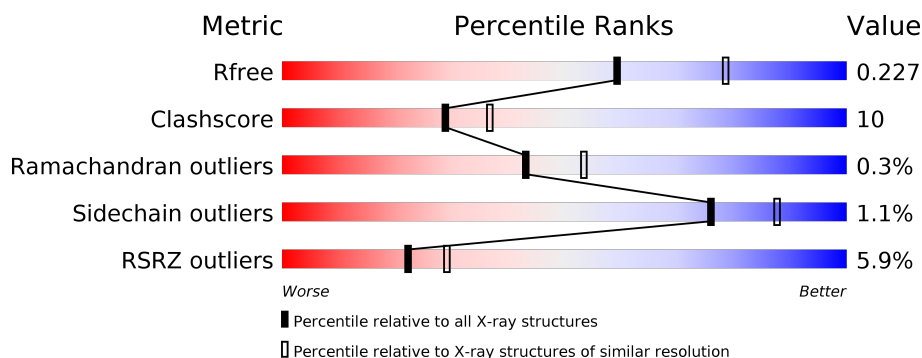
1 Overall quality at a glance

The following experimental techniques were used to determine the structure:

X-RAY DIFFRACTION

The reported resolution of this entry is 2.29 Å.

Percentile scores (ranging between 0-100) for global validation metrics of the entry are shown in the following graphic. The table shows the number of entries on which the scores are based.



Metric	Whole archive (#Entries)	Similar resolution (#Entries, resolution range(Å))
R_{free}	111664	4477 (2.30-2.30)
Clashscore	122126	5072 (2.30-2.30)
Ramachandran outliers	120053	5022 (2.30-2.30)
Sidechain outliers	120020	5021 (2.30-2.30)
RSRZ outliers	108989	4374 (2.30-2.30)

The table below summarises the geometric issues observed across the polymeric chains and their fit to the electron density. The red, orange, yellow and green segments on the lower bar indicate the fraction of residues that contain outliers for ≥ 3 , 2, 1 and 0 types of geometric quality criteria. A grey segment represents the fraction of residues that are not modelled. The numeric value for each fraction is indicated below the corresponding segment, with a dot representing fractions $\leq 5\%$. The upper red bar (where present) indicates the fraction of residues that have poor fit to the electron density. The numeric value is given above the bar.

Mol	Chain	Length	Quality of chain
1	A	450	<div> <div>4%</div> <div> <div></div> <div>76%</div> <div>17%</div> <div>• 7%</div> </div> </div>
1	B	450	<div> <div>4%</div> <div> <div></div> <div>80%</div> <div>16%</div> <div>• •</div> </div> </div>
1	C	450	<div> <div>5%</div> <div> <div></div> <div>75%</div> <div>20%</div> <div>• •</div> </div> </div>
1	D	450	<div> <div>10%</div> <div> <div></div> <div>74%</div> <div>19%</div> <div>• 7%</div> </div> </div>

2 Entry composition (i)

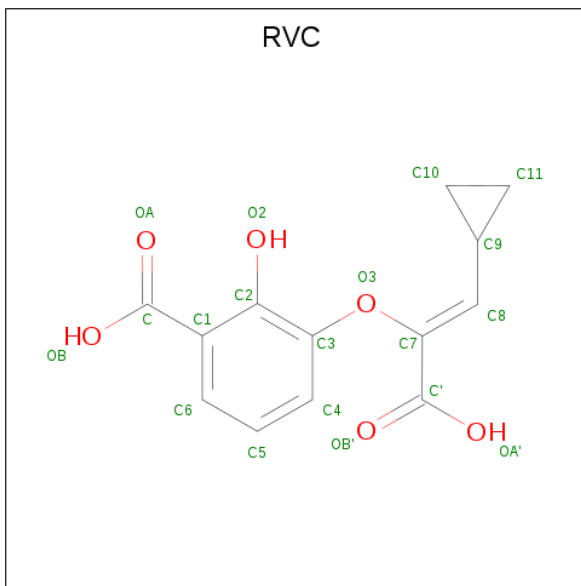
There are 4 unique types of molecules in this entry. The entry contains 13158 atoms, of which 0 are hydrogens and 0 are deuteriums.

In the tables below, the ZeroOcc column contains the number of atoms modelled with zero occupancy, the AltConf column contains the number of residues with at least one atom in alternate conformation and the Trace column contains the number of residues modelled with at most 2 atoms.

- Molecule 1 is a protein called Isochorismate synthase/isochorismate-pyruvate lyase mbtI.

Mol	Chain	Residues	Atoms					ZeroOcc	AltConf	Trace
1	A	418	Total 3143	C 1977	N 559	O 597	S 10	0	1	0
1	B	432	Total 3231	C 2027	N 580	O 614	S 10	0	0	0
1	C	430	Total 3241	C 2035	N 579	O 617	S 10	0	0	0
1	D	420	Total 3130	C 1971	N 552	O 597	S 10	0	0	0

- Molecule 2 is 3- $\{[(Z)\text{-}1\text{-carboxy-}2\text{-cyclopropylethenyl}]\text{oxy}\}$ -2-hydroxybenzoic acid (three-letter code: RVC) (formula: $\text{C}_{13}\text{H}_{12}\text{O}_6$).



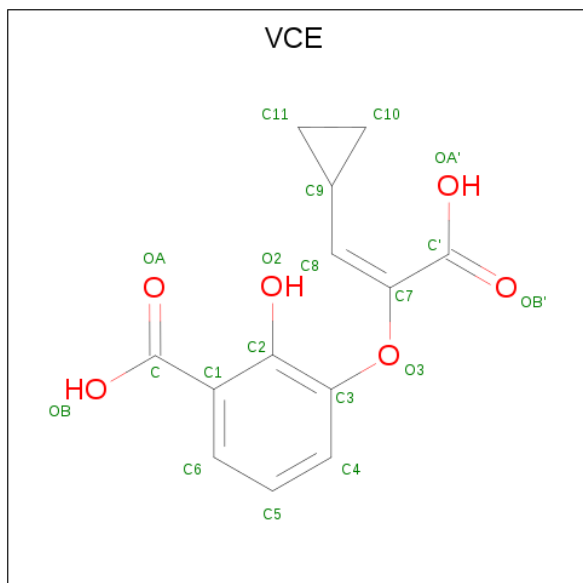
Mol	Chain	Residues	Atoms			ZeroOcc	AltConf
2	A	1	Total 19	C 13	O 6	0	0
2	B	1	Total 19	C 13	O 6	0	0

Continued on next page...

Continued from previous page...

Mol	Chain	Residues	Atoms			ZeroOcc	AltConf
2	C	1	Total	C	O	0	1
			19	13	6		
2	D	1	Total	C	O	0	0
			19	13	6		

- Molecule 3 is 3-{[(E)-1-carboxy-2-cyclopropylethenyl]oxy}-2-hydroxybenzoic acid (three-letter code: VCE) (formula: C₁₃H₁₂O₆).



Mol	Chain	Residues	Atoms			ZeroOcc	AltConf
3	C	1	Total	C	O	0	1
			19	13	6		

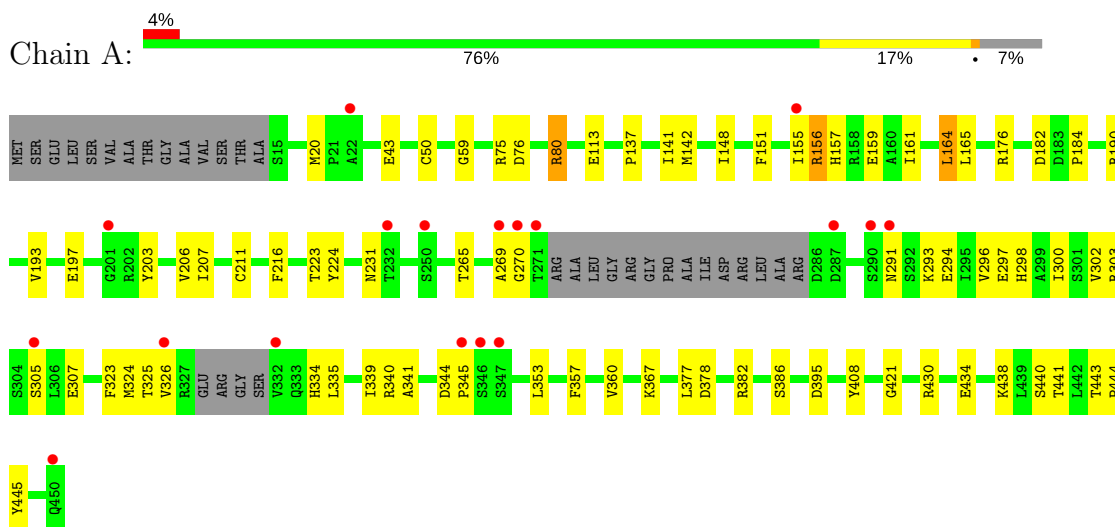
- Molecule 4 is water.

Mol	Chain	Residues	Atoms		ZeroOcc	AltConf
4	A	70	Total	O	0	0
			70	70		
4	B	89	Total	O	0	0
			89	89		
4	C	109	Total	O	0	0
			109	109		
4	D	50	Total	O	0	0
			50	50		

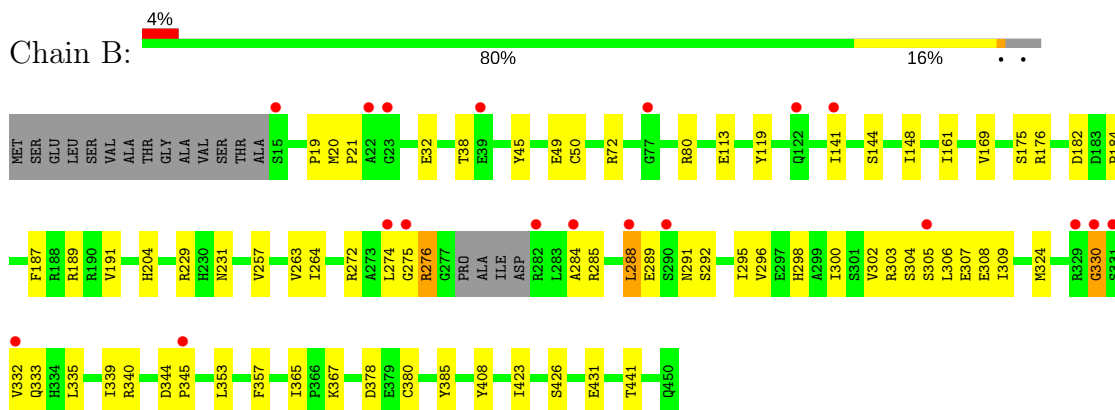
3 Residue-property plots

These plots are drawn for all protein, RNA and DNA chains in the entry. The first graphic for a chain summarises the proportions of the various outlier classes displayed in the second graphic. The second graphic shows the sequence view annotated by issues in geometry and electron density. Residues are color-coded according to the number of geometric quality criteria for which they contain at least one outlier: green = 0, yellow = 1, orange = 2 and red = 3 or more. A red dot above a residue indicates a poor fit to the electron density ($RSRZ > 2$). Stretches of 2 or more consecutive residues without any outlier are shown as a green connector. Residues present in the sample, but not in the model, are shown in grey.

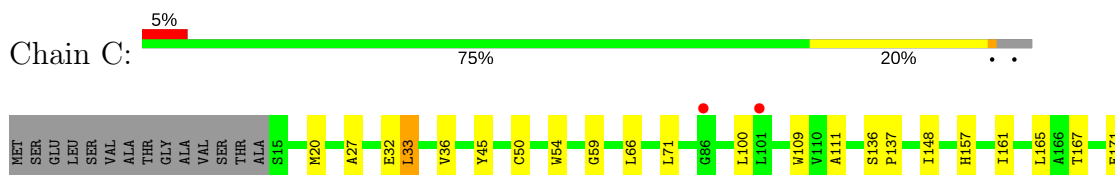
- Molecule 1: Isochorismate synthase/isochorismate-pyruvate lyase mbtI

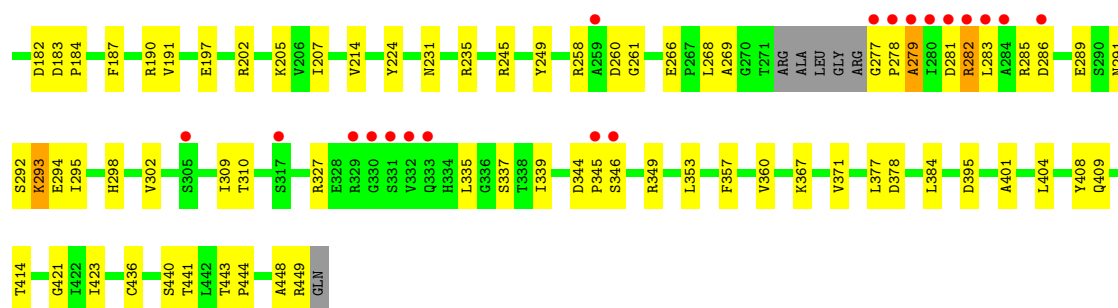


- Molecule 1: Isochorismate synthase/isochorismate-pyruvate lyase mbtI

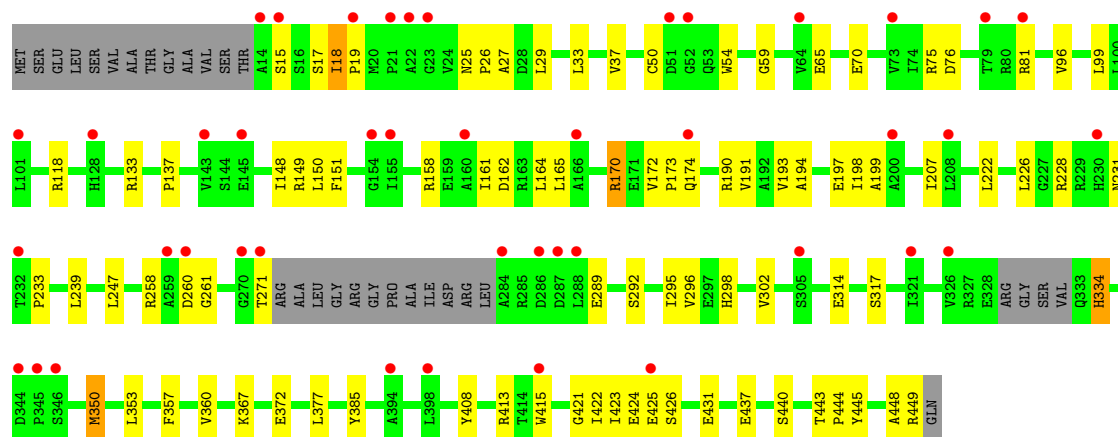
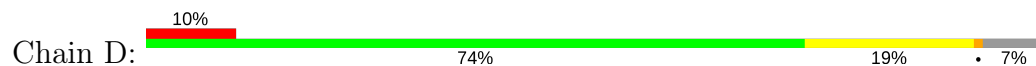


- Molecule 1: Isochorismate synthase/isochorismate-pyruvate lyase mbtI





• Molecule 1: Isochorismate synthase/ischorismate-pyruvate lyase mbtI



4 Data and refinement statistics

Property	Value	Source
Space group	P 1 21 1	Depositor
Cell constants a, b, c, α , β , γ	87.15Å 115.94Å 95.85Å 90.00° 91.44° 90.00°	Depositor
Resolution (Å)	19.73 – 2.29 19.64 – 2.29	Depositor EDS
% Data completeness (in resolution range)	(Not available) (19.73-2.29) 99.1 (19.64-2.29)	Depositor EDS
R_{merge}	(Not available)	Depositor
R_{sym}	(Not available)	Depositor
$\langle I/\sigma(I) \rangle$ ¹	1.58 (at 2.30Å)	Xtriage
Refinement program	BUSTER 2.8.0	Depositor
R, R_{free}	0.199 , 0.231 0.212 , 0.227	Depositor DCC
R_{free} test set	4239 reflections (5.01%)	wwPDB-VP
Wilson B-factor (Å ²)	37.7	Xtriage
Anisotropy	0.063	Xtriage
Bulk solvent k_{sol} (e/Å ³), B_{sol} (Å ²)	0.31 , 57.3	EDS
L-test for twinning ²	$\langle L \rangle = 0.53$, $\langle L^2 \rangle = 0.38$	Xtriage
Estimated twinning fraction	0.012 for h,-k,-l	Xtriage
F_o, F_c correlation	0.95	EDS
Total number of atoms	13158	wwPDB-VP
Average B, all atoms (Å ²)	42.0	wwPDB-VP

Xtriage's analysis on translational NCS is as follows: *The largest off-origin peak in the Patterson function is 3.73% of the height of the origin peak. No significant pseudotranslation is detected.*

¹Intensities estimated from amplitudes.

²Theoretical values of $\langle |L| \rangle$, $\langle L^2 \rangle$ for acentric reflections are 0.5, 0.333 respectively for untwinned datasets, and 0.375, 0.2 for perfectly twinned datasets.

5 Model quality [i](#)

5.1 Standard geometry [i](#)

Bond lengths and bond angles in the following residue types are not validated in this section: RVC, VCE

The Z score for a bond length (or angle) is the number of standard deviations the observed value is removed from the expected value. A bond length (or angle) with $|Z| > 5$ is considered an outlier worth inspection. RMSZ is the root-mean-square of all Z scores of the bond lengths (or angles).

Mol	Chain	Bond lengths		Bond angles	
		RMSZ	$\# Z > 5$	RMSZ	$\# Z > 5$
1	A	1.50	5/3198 (0.2%)	0.79	1/4350 (0.0%)
1	B	1.51	8/3287 (0.2%)	0.79	1/4472 (0.0%)
1	C	1.54	7/3298 (0.2%)	0.80	1/4483 (0.0%)
1	D	1.37	6/3185 (0.2%)	0.76	0/4335
All	All	1.48	26/12968 (0.2%)	0.79	3/17640 (0.0%)

Chiral center outliers are detected by calculating the chiral volume of a chiral center and verifying if the center is modelled as a planar moiety or with the opposite hand. A planarity outlier is detected by checking planarity of atoms in a peptide group, atoms in a mainchain group or atoms of a sidechain that are expected to be planar.

Mol	Chain	#Chirality outliers	#Planarity outliers
1	A	0	1

The worst 5 of 26 bond length outliers are listed below:

Mol	Chain	Res	Type	Atoms	Z	Observed(Å)	Ideal(Å)
1	B	408	TYR	CD1-CE1	-6.34	1.29	1.39
1	C	436	CYS	CB-SG	-6.11	1.71	1.82
1	C	50	CYS	CB-SG	-6.05	1.72	1.82
1	D	50	CYS	CB-SG	-5.87	1.72	1.81
1	C	408	TYR	CD1-CE1	-5.84	1.30	1.39

All (3) bond angle outliers are listed below:

Mol	Chain	Res	Type	Atoms	Z	Observed(°)	Ideal(°)
1	C	395	ASP	CB-CG-OD1	5.55	123.30	118.30
1	A	395	ASP	CB-CG-OD1	5.42	123.18	118.30
1	B	189	ARG	NE-CZ-NH1	-5.07	117.76	120.30

There are no chirality outliers.

All (1) planarity outliers are listed below:

Mol	Chain	Res	Type	Group
1	A	80[A]	ARG	Mainchain

5.2 Too-close contacts ⓘ

In the following table, the Non-H and H(model) columns list the number of non-hydrogen atoms and hydrogen atoms in the chain respectively. The H(added) column lists the number of hydrogen atoms added and optimized by MolProbity. The Clashes column lists the number of clashes within the asymmetric unit, whereas Symm-Clashes lists symmetry related clashes.

Mol	Chain	Non-H	H(model)	H(added)	Clashes	Symm-Clashes
1	A	3143	0	3087	66	0
1	B	3231	0	3174	49	0
1	C	3241	0	3210	75	0
1	D	3130	0	3061	75	0
2	A	19	0	9	1	0
2	B	19	0	9	0	0
2	C	19	0	9	2	0
2	D	19	0	9	0	0
3	C	19	0	9	1	0
4	A	70	0	0	0	0
4	B	89	0	0	2	0
4	C	109	0	0	2	0
4	D	50	0	0	3	0
All	All	13158	0	12577	264	0

The all-atom clashscore is defined as the number of clashes found per 1000 atoms (including hydrogen atoms). The all-atom clashscore for this structure is 10.

The worst 5 of 264 close contacts within the same asymmetric unit are listed below, sorted by their clash magnitude.

Atom-1	Atom-2	Interatomic distance (Å)	Clash overlap (Å)
1:A:80[B]:ARG:HG2	1:A:80[B]:ARG:HH11	1.00	1.09
1:D:271:THR:H	1:D:334:HIS:HB3	1.17	1.02
1:D:174:GLN:HG3	4:D:501:HOH:O	1.59	1.01
1:A:80[B]:ARG:CG	1:A:80[B]:ARG:HH11	1.72	1.00
1:A:80[B]:ARG:HG2	1:A:80[B]:ARG:NH1	1.66	0.93

There are no symmetry-related clashes.

5.3 Torsion angles ⓘ

5.3.1 Protein backbone ⓘ

In the following table, the Percentiles column shows the percent Ramachandran outliers of the chain as a percentile score with respect to all X-ray entries followed by that with respect to entries of similar resolution.

The Analysed column shows the number of residues for which the backbone conformation was analysed, and the total number of residues.

Mol	Chain	Analysed	Favoured	Allowed	Outliers	Percentiles	
1	A	413/450 (92%)	410 (99%)	3 (1%)	0	100	100
1	B	428/450 (95%)	421 (98%)	5 (1%)	2 (0%)	31	38
1	C	426/450 (95%)	418 (98%)	6 (1%)	2 (0%)	31	38
1	D	414/450 (92%)	408 (99%)	5 (1%)	1 (0%)	49	61
All	All	1681/1800 (93%)	1657 (99%)	19 (1%)	5 (0%)	43	53

All (5) Ramachandran outliers are listed below:

Mol	Chain	Res	Type
1	B	276	ARG
1	C	282	ARG
1	B	330	GLY
1	C	279	ALA
1	D	233	PRO

5.3.2 Protein sidechains ⓘ

In the following table, the Percentiles column shows the percent sidechain outliers of the chain as a percentile score with respect to all X-ray entries followed by that with respect to entries of similar resolution.

The Analysed column shows the number of residues for which the sidechain conformation was analysed, and the total number of residues.

Mol	Chain	Analysed	Rotameric	Outliers	Percentiles	
1	A	318/358 (89%)	314 (99%)	4 (1%)	71	84
1	B	326/358 (91%)	324 (99%)	2 (1%)	87	94
1	C	332/358 (93%)	328 (99%)	4 (1%)	74	86
1	D	314/358 (88%)	310 (99%)	4 (1%)	71	84
All	All	1290/1432 (90%)	1276 (99%)	14 (1%)	76	87

5 of 14 residues with a non-rotameric sidechain are listed below:

Mol	Chain	Res	Type
1	C	33	LEU
1	C	268	LEU
1	D	170	ARG
1	B	378	ASP
1	D	18	ILE

Some sidechains can be flipped to improve hydrogen bonding and reduce clashes. All (1) such sidechains are listed below:

Mol	Chain	Res	Type
1	A	291	ASN

5.3.3 RNA [i](#)

There are no RNA molecules in this entry.

5.4 Non-standard residues in protein, DNA, RNA chains [i](#)

There are no non-standard protein/DNA/RNA residues in this entry.

5.5 Carbohydrates [i](#)

There are no carbohydrates in this entry.

5.6 Ligand geometry [i](#)

5 ligands are modelled in this entry.

In the following table, the Counts columns list the number of bonds (or angles) for which Mogul statistics could be retrieved, the number of bonds (or angles) that are observed in the model and the number of bonds (or angles) that are defined in the Chemical Component Dictionary. The Link column lists molecule types, if any, to which the group is linked. The Z score for a bond length (or angle) is the number of standard deviations the observed value is removed from the expected value. A bond length (or angle) with $|Z| > 2$ is considered an outlier worth inspection. RMSZ is the root-mean-square of all Z scores of the bond lengths (or angles).

Mol	Type	Chain	Res	Link	Bond lengths			Bond angles		
					Counts	RMSZ	# Z > 2	Counts	RMSZ	# Z > 2
2	RVC	A	451	-	13,20,20	2.76	8 (61%)	16,28,28	3.07	8 (50%)
2	RVC	B	451	-	13,20,20	2.36	6 (46%)	16,28,28	2.10	3 (18%)

Mol	Type	Chain	Res	Link	Bond lengths			Bond angles		
					Counts	RMSZ	# Z > 2	Counts	RMSZ	# Z > 2
3	VCE	C	1451[B]	-	13,20,20	2.78	7 (53%)	16,28,28	2.78	6 (37%)
2	RVC	C	451[A]	-	13,20,20	2.22	7 (53%)	16,28,28	2.87	3 (18%)
2	RVC	D	451	-	13,20,20	1.76	3 (23%)	16,28,28	1.23	3 (18%)

In the following table, the Chirals column lists the number of chiral outliers, the number of chiral centers analysed, the number of these observed in the model and the number defined in the Chemical Component Dictionary. Similar counts are reported in the Torsion and Rings columns. '-' means no outliers of that kind were identified.

Mol	Type	Chain	Res	Link	Chirals	Torsions	Rings
2	RVC	A	451	-	-	0/8/18/18	0/1/2/2
2	RVC	B	451	-	-	0/8/18/18	0/1/2/2
3	VCE	C	1451[B]	-	-	0/8/18/18	0/1/2/2
2	RVC	C	451[A]	-	-	0/8/18/18	0/1/2/2
2	RVC	D	451	-	-	0/8/18/18	0/1/2/2

The worst 5 of 31 bond length outliers are listed below:

Mol	Chain	Res	Type	Atoms	Z	Observed(Å)	Ideal(Å)
3	C	1451[B]	VCE	O3-C3	-5.35	1.30	1.41
3	C	1451[B]	VCE	C3-C2	-4.60	1.34	1.40
2	A	451	RVC	C10-C9	-4.51	1.45	1.51
2	B	451	RVC	C10-C9	-4.35	1.45	1.51
2	A	451	RVC	O3-C3	-3.97	1.32	1.41

The worst 5 of 23 bond angle outliers are listed below:

Mol	Chain	Res	Type	Atoms	Z	Observed(°)	Ideal(°)
3	C	1451[B]	VCE	C10-C9-C8	-5.99	110.04	118.53
2	A	451	RVC	C10-C9-C8	-5.56	110.66	118.53
2	C	451[A]	RVC	C10-C9-C8	-4.98	111.47	118.53
3	C	1451[B]	VCE	C11-C9-C8	-4.18	112.61	118.53
2	B	451	RVC	C10-C9-C8	-3.95	112.93	118.53

There are no chirality outliers.

There are no torsion outliers.

There are no ring outliers.

3 monomers are involved in 4 short contacts:

Mol	Chain	Res	Type	Clashes	Symm-Clashes
2	A	451	RVC	1	0
3	C	1451[B]	VCE	1	0
2	C	451[A]	RVC	2	0

5.7 Other polymers [i](#)

There are no such residues in this entry.

5.8 Polymer linkage issues [i](#)

There are no chain breaks in this entry.

6 Fit of model and data [i](#)

6.1 Protein, DNA and RNA chains [i](#)

In the following table, the column labelled ‘#RSRZ> 2’ contains the number (and percentage) of RSRZ outliers, followed by percent RSRZ outliers for the chain as percentile scores relative to all X-ray entries and entries of similar resolution. The OWAB column contains the minimum, median, 95th percentile and maximum values of the occupancy-weighted average B-factor per residue. The column labelled ‘Q< 0.9’ lists the number of (and percentage) of residues with an average occupancy less than 0.9.

Mol	Chain	Analysed	<RSRZ>	#RSRZ>2			OWAB(Å ²)	Q<0.9
1	A	418/450 (92%)	0.10	18 (4%)	35	42	19, 39, 62, 88	8 (1%)
1	B	432/450 (96%)	0.11	19 (4%)	34	41	20, 37, 67, 77	8 (1%)
1	C	430/450 (95%)	0.06	21 (4%)	29	37	20, 36, 62, 91	8 (1%)
1	D	420/450 (93%)	0.44	43 (10%)	7	9	23, 49, 80, 90	7 (1%)
All	All	1700/1800 (94%)	0.18	101 (5%)	22	29	19, 40, 69, 91	31 (1%)

The worst 5 of 101 RSRZ outliers are listed below:

Mol	Chain	Res	Type	RSRZ
1	D	22	ALA	6.6
1	C	283	LEU	6.2
1	A	155	ILE	6.1
1	D	345	PRO	5.4
1	D	79	THR	4.8

6.2 Non-standard residues in protein, DNA, RNA chains [i](#)

There are no non-standard protein/DNA/RNA residues in this entry.

6.3 Carbohydrates [i](#)

There are no carbohydrates in this entry.

6.4 Ligands [i](#)

In the following table, the Atoms column lists the number of modelled atoms in the group and the number defined in the chemical component dictionary. The B-factors column lists the minimum, median, 95th percentile and maximum values of B factors of atoms in the group. The column labelled ‘Q< 0.9’ lists the number of atoms with occupancy less than 0.9.

Mol	Type	Chain	Res	Atoms	RSCC	RSR	B-factors(\AA^2)	Q<0.9
3	VCE	C	1451[B]	19/19	0.88	0.14	29,36,45,46	19
2	RVC	C	451[A]	19/19	0.89	0.13	29,36,45,46	19
2	RVC	A	451	19/19	0.90	0.15	24,27,31,34	0
2	RVC	D	451	19/19	0.90	0.16	32,44,62,63	0
2	RVC	B	451	19/19	0.95	0.09	22,31,44,48	0

6.5 Other polymers [i](#)

There are no such residues in this entry.