



Full wwPDB X-ray Structure Validation Report ⓘ

Mar 8, 2018 – 08:45 pm GMT

PDB ID : 1S1C
Title : Crystal structure of the complex between the human RhoA and Rho-binding domain of human ROCKI
Authors : Dvorsky, R.; Blumenstein, L.; Vetter, I.R.; Ahmadian, M.R.
Deposited on : 2004-01-06
Resolution : 2.60 Å(reported)

This is a Full wwPDB X-ray Structure Validation Report for a publicly released PDB entry.

We welcome your comments at validation@mail.wwpdb.org

A user guide is available at

<https://www.wwpdb.org/validation/2017/XrayValidationReportHelp>

with specific help available everywhere you see the ⓘ symbol.

The following versions of software and data (see [references ⓘ](#)) were used in the production of this report:

MolProbity : 4.02b-467
Mogul : 1.7.3 (157068), CSD as539be (2018)
Xtriage (Phenix) : 1.13
EDS : trunk30967
Percentile statistics : 20171227.v01 (using entries in the PDB archive December 27th 2017)
Refmac : 5.8.0158
CCP4 : 7.0 (Gargrove)
Ideal geometry (proteins) : Engh & Huber (2001)
Ideal geometry (DNA, RNA) : Parkinson et al. (1996)
Validation Pipeline (wwPDB-VP) : trunk30967

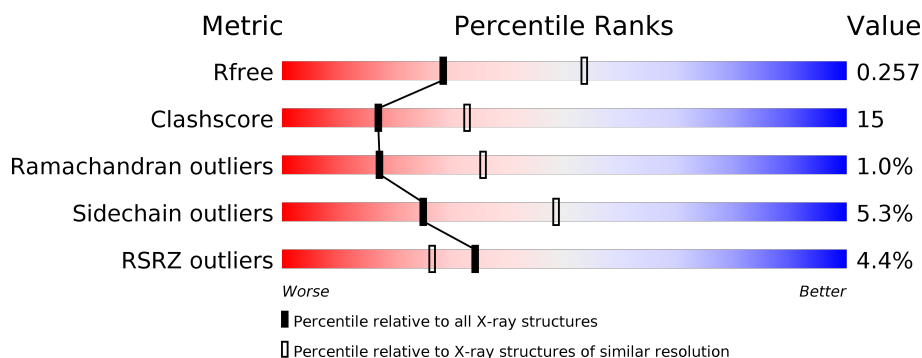
1 Overall quality at a glance

The following experimental techniques were used to determine the structure:

X-RAY DIFFRACTION

The reported resolution of this entry is 2.60 Å.

Percentile scores (ranging between 0-100) for global validation metrics of the entry are shown in the following graphic. The table shows the number of entries on which the scores are based.



Metric	Whole archive (#Entries)	Similar resolution (#Entries, resolution range(Å))
R_{free}	111664	2767 (2.60-2.60)
Clashscore	122126	3110 (2.60-2.60)
Ramachandran outliers	120053	3062 (2.60-2.60)
Sidechain outliers	120020	3062 (2.60-2.60)
RSRZ outliers	108989	2706 (2.60-2.60)

The table below summarises the geometric issues observed across the polymeric chains and their fit to the electron density. The red, orange, yellow and green segments on the lower bar indicate the fraction of residues that contain outliers for ≥ 3 , 2, 1 and 0 types of geometric quality criteria. A grey segment represents the fraction of residues that are not modelled. The numeric value for each fraction is indicated below the corresponding segment, with a dot representing fractions $\leq 5\%$. The upper red bar (where present) indicates the fraction of residues that have poor fit to the electron density. The numeric value is given above the bar.

Mol	Chain	Length	Quality of chain
1	A	183	<div> <div>0%</div> <div> <div></div> <div>69%</div> <div>27%</div> <div>..</div> </div> </div>
1	B	183	<div> <div>2%</div> <div> <div></div> <div>72%</div> <div>25%</div> <div>..</div> </div> </div>
2	X	71	<div> <div>14%</div> <div> <div></div> <div>61%</div> <div>34%</div> <div>..</div> </div> </div>
2	Y	71	<div> <div>8%</div> <div> <div></div> <div>56%</div> <div>37%</div> <div>6%</div> <div>.</div> </div> </div>

2 Entry composition

There are 5 unique types of molecules in this entry. The entry contains 4072 atoms, of which 0 are hydrogens and 0 are deuteriums.

In the tables below, the ZeroOcc column contains the number of atoms modelled with zero occupancy, the AltConf column contains the number of residues with at least one atom in alternate conformation and the Trace column contains the number of residues modelled with at most 2 atoms.

- Molecule 1 is a protein called Transforming protein RhoA.

Mol	Chain	Residues	Atoms					ZeroOcc	AltConf	Trace
1	A	179	Total	C	N	O	S	0	0	0
			1410	891	237	272	10			
1	B	179	Total	C	N	O	S	0	0	0
			1410	891	237	272	10			

There are 4 discrepancies between the modelled and reference sequences:

Chain	Residue	Modelled	Actual	Comment	Reference
A	-1	GLY	-	CLONING ARTIFACT	UNP P61586
A	0	SER	-	CLONING ARTIFACT	UNP P61586
B	-1	GLY	-	CLONING ARTIFACT	UNP P61586
B	0	SER	-	CLONING ARTIFACT	UNP P61586

- Molecule 2 is a protein called Rho-associated, coiled-coil containing protein kinase 1.

Mol	Chain	Residues	Atoms					ZeroOcc	AltConf	Trace
2	X	69	Total	C	N	O	S	0	0	0
			558	346	98	111	3			
2	Y	70	Total	C	N	O	S	0	0	0
			573	353	100	117	3			

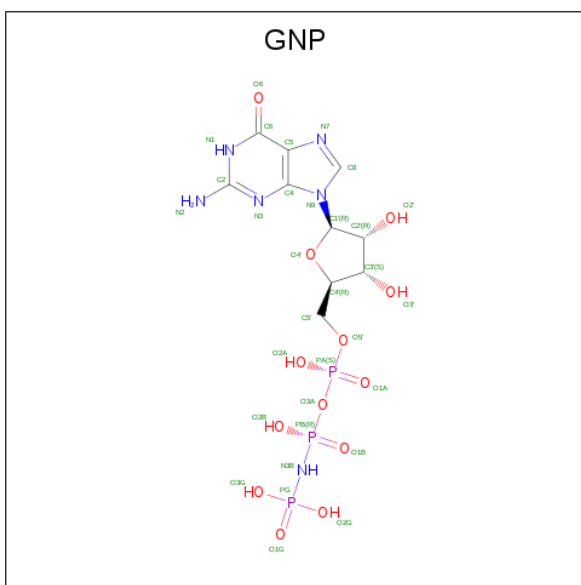
There are 4 discrepancies between the modelled and reference sequences:

Chain	Residue	Modelled	Actual	Comment	Reference
X	945	GLY	-	CLONING ARTIFACT	UNP Q13464
X	946	SER	-	CLONING ARTIFACT	UNP Q13464
Y	945	GLY	-	CLONING ARTIFACT	UNP Q13464
Y	946	SER	-	CLONING ARTIFACT	UNP Q13464

- Molecule 3 is MAGNESIUM ION (three-letter code: MG) (formula: Mg).

Mol	Chain	Residues	Atoms	ZeroOcc	AltConf
3	B	1	Total Mg 1 1	0	0
3	A	1	Total Mg 1 1	0	0

- Molecule 4 is PHOSPHOAMINOPHOSPHONIC ACID-GUANYLATE ESTER (three-letter code: GNP) (formula: $\text{C}_{10}\text{H}_{17}\text{N}_6\text{O}_{13}\text{P}_3$).



Mol	Chain	Residues	Atoms				ZeroOcc	AltConf	
4	A	1	Total 32	C 10	N 6	O 13	P 3	0	0
4	B	1	Total 32	C 10	N 6	O 13	P 3	0	0

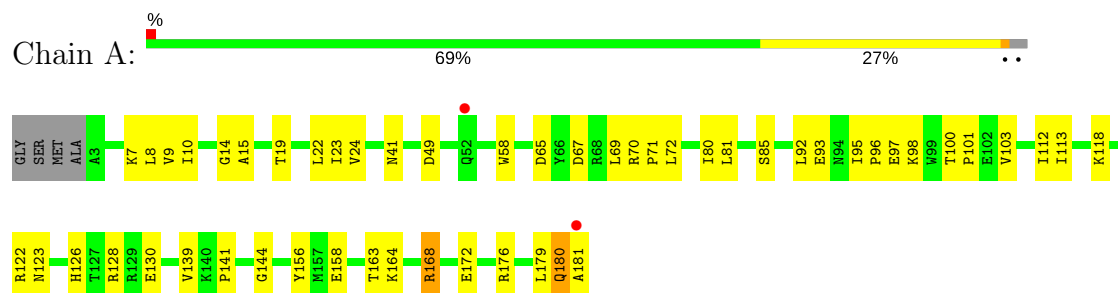
- Molecule 5 is water.

Mol	Chain	Residues	Atoms	ZeroOcc	AltConf
5	A	29	Total O 29 29	0	0
5	B	21	Total O 21 21	0	0
5	X	4	Total O 4 4	0	0
5	Y	1	Total O 1 1	0	0

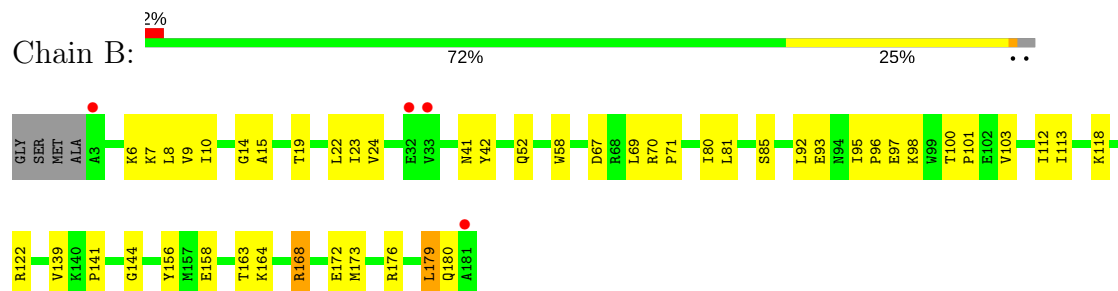
3 Residue-property plots [i](#)

These plots are drawn for all protein, RNA and DNA chains in the entry. The first graphic for a chain summarises the proportions of the various outlier classes displayed in the second graphic. The second graphic shows the sequence view annotated by issues in geometry and electron density. Residues are color-coded according to the number of geometric quality criteria for which they contain at least one outlier: green = 0, yellow = 1, orange = 2 and red = 3 or more. A red dot above a residue indicates a poor fit to the electron density ($RSRZ > 2$). Stretches of 2 or more consecutive residues without any outlier are shown as a green connector. Residues present in the sample, but not in the model, are shown in grey.

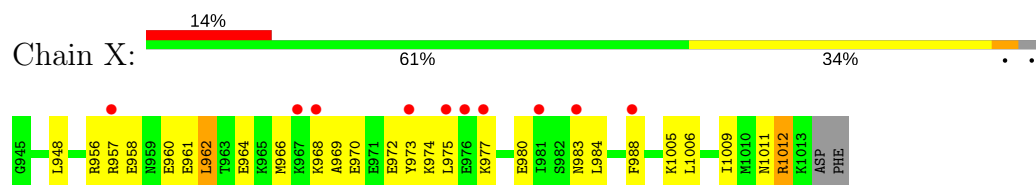
- Molecule 1: Transforming protein RhoA



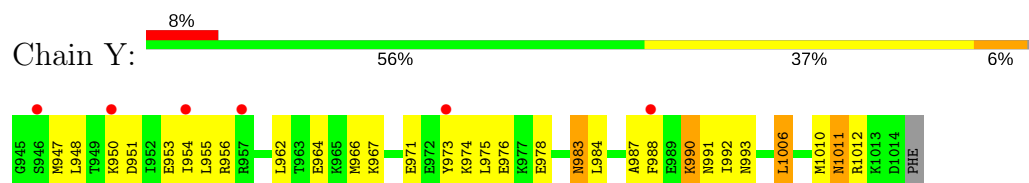
- Molecule 1: Transforming protein RhoA



- Molecule 2: Rho-associated, coiled-coil containing protein kinase 1



- Molecule 2: Rho-associated, coiled-coil containing protein kinase 1



4 Data and refinement statistics

Property	Value	Source
Space group	P 1 21 1	Depositor
Cell constants a, b, c, α , β , γ	34.40Å 89.54Å 98.11Å 90.00° 91.86° 90.00°	Depositor
Resolution (Å)	19.77 – 2.60 28.59 – 2.60	Depositor EDS
% Data completeness (in resolution range)	95.4 (19.77-2.60) 95.5 (28.59-2.60)	Depositor EDS
R_{merge}	(Not available)	Depositor
R_{sym}	(Not available)	Depositor
$\langle I/\sigma(I) \rangle$ ¹	3.76 (at 2.61Å)	Xtriage
Refinement program	CNS 1.1	Depositor
R, R_{free}	0.219 , 0.257 0.220 , 0.257	Depositor DCC
R_{free} test set	1733 reflections (9.91%)	wwPDB-VP
Wilson B-factor (Å ²)	32.4	Xtriage
Anisotropy	0.326	Xtriage
Bulk solvent k_{sol} (e/Å ³), B_{sol} (Å ²)	0.36 , 49.9	EDS
L-test for twinning ²	$\langle L \rangle = 0.47$, $\langle L^2 \rangle = 0.30$	Xtriage
Estimated twinning fraction	0.065 for h,-k,-l	Xtriage
F_o, F_c correlation	0.91	EDS
Total number of atoms	4072	wwPDB-VP
Average B, all atoms (Å ²)	37.0	wwPDB-VP

Xtriage's analysis on translational NCS is as follows: *The largest off-origin peak in the Patterson function is 5.58% of the height of the origin peak. No significant pseudotranslation is detected.*

¹Intensities estimated from amplitudes.

²Theoretical values of $\langle |L| \rangle$, $\langle L^2 \rangle$ for acentric reflections are 0.5, 0.333 respectively for untwinned datasets, and 0.375, 0.2 for perfectly twinned datasets.

5 Model quality [i](#)

5.1 Standard geometry [i](#)

Bond lengths and bond angles in the following residue types are not validated in this section: GNP, MG

The Z score for a bond length (or angle) is the number of standard deviations the observed value is removed from the expected value. A bond length (or angle) with $|Z| > 5$ is considered an outlier worth inspection. RMSZ is the root-mean-square of all Z scores of the bond lengths (or angles).

Mol	Chain	Bond lengths		Bond angles	
		RMSZ	$\# Z > 5$	RMSZ	$\# Z > 5$
1	A	0.38	0/1438	0.63	0/1945
1	B	0.38	0/1438	0.64	0/1945
2	X	0.36	0/559	0.51	0/741
2	Y	0.42	0/574	0.57	0/761
All	All	0.38	0/4009	0.61	0/5392

There are no bond length outliers.

There are no bond angle outliers.

There are no chirality outliers.

There are no planarity outliers.

5.2 Too-close contacts [i](#)

In the following table, the Non-H and H(model) columns list the number of non-hydrogen atoms and hydrogen atoms in the chain respectively. The H(added) column lists the number of hydrogen atoms added and optimized by MolProbity. The Clashes column lists the number of clashes within the asymmetric unit, whereas Symm-Clashes lists symmetry related clashes.

Mol	Chain	Non-H	H(model)	H(added)	Clashes	Symm-Clashes
1	A	1410	0	1389	35	0
1	B	1410	0	1390	31	0
2	X	558	0	579	30	0
2	Y	573	0	591	34	0
3	A	1	0	0	0	0
3	B	1	0	0	0	0
4	A	32	0	13	0	0
4	B	32	0	13	0	0
5	A	29	0	0	0	0

Continued on next page...

Continued from previous page...

Mol	Chain	Non-H	H(model)	H(added)	Clashes	Symm-Clashes
5	B	21	0	0	0	0
5	X	4	0	0	0	0
5	Y	1	0	0	0	0
All	All	4072	0	3975	120	0

The all-atom clashscore is defined as the number of clashes found per 1000 atoms (including hydrogen atoms). The all-atom clashscore for this structure is 15.

All (120) close contacts within the same asymmetric unit are listed below, sorted by their clash magnitude.

Atom-1	Atom-2	Interatomic distance (Å)	Clash overlap (Å)
2:X:1011:ASN:HD22	2:X:1012:ARG:HH21	1.11	0.91
2:X:964:GLU:HG2	2:X:968:LYS:HE2	1.50	0.90
1:A:123:ASN:HA	1:A:128:ARG:NH1	1.89	0.87
1:A:123:ASN:HA	1:A:128:ARG:HH12	1.45	0.79
2:X:962:LEU:HD13	2:Y:962:LEU:HD22	1.68	0.76
2:X:1011:ASN:HD22	2:X:1012:ARG:NH2	1.83	0.75
2:X:1011:ASN:HB3	2:X:1012:ARG:NH2	2.04	0.72
2:X:964:GLU:HG2	2:X:968:LYS:CE	2.21	0.70
2:Y:954:ILE:HG23	2:Y:955:LEU:HD12	1.76	0.68
1:B:163:THR:O	1:B:164:LYS:HB2	1.93	0.67
2:X:957:ARG:O	2:X:961:GLU:HG3	1.94	0.67
2:Y:983:ASN:N	2:Y:983:ASN:HD22	1.93	0.67
1:B:122:ARG:NH1	1:B:139:VAL:O	2.27	0.66
1:A:163:THR:O	1:A:164:LYS:HB2	1.95	0.65
1:A:122:ARG:NH1	1:A:139:VAL:O	2.31	0.62
2:X:1011:ASN:ND2	2:X:1012:ARG:HH21	1.92	0.60
1:A:80:ILE:HD12	1:A:103:VAL:HG13	1.84	0.59
1:B:80:ILE:HD12	1:B:103:VAL:HG13	1.85	0.58
2:Y:962:LEU:O	2:Y:962:LEU:HD23	2.04	0.58
2:Y:987:ALA:O	2:Y:991:ASN:HB2	2.05	0.57
2:Y:948:LEU:HD13	2:Y:953:GLU:OE1	2.05	0.56
2:Y:974:LYS:C	2:Y:976:GLU:H	2.07	0.56
2:X:977:LYS:HD2	2:Y:973:TYR:CE2	2.40	0.56
2:X:969:ALA:O	2:X:972:GLU:HB3	2.04	0.56
2:X:975:LEU:HD23	2:X:975:LEU:C	2.26	0.56
2:X:966:MET:O	2:X:970:GLU:HG2	2.05	0.56
1:B:8:LEU:C	1:B:8:LEU:HD23	2.27	0.55
2:Y:954:ILE:HG23	2:Y:955:LEU:CD1	2.36	0.55
2:X:1005:LYS:O	2:X:1009:ILE:HG12	2.06	0.55
1:A:7:LYS:HE3	1:A:58:TRP:CE2	2.42	0.54

Continued on next page...

Continued from previous page...

Atom-1	Atom-2	Interatomic distance (Å)	Clash overlap (Å)
2:X:984:LEU:O	2:X:988:PHE:HD1	1.91	0.54
2:X:962:LEU:O	2:X:966:MET:HG3	2.08	0.54
1:A:8:LEU:HD23	1:A:8:LEU:C	2.27	0.54
1:A:122:ARG:HH22	1:A:158:GLU:CD	2.10	0.54
1:A:126:HIS:O	1:A:130:GLU:HG2	2.09	0.53
2:Y:948:LEU:HD22	2:Y:956:ARG:HH21	1.74	0.53
1:B:8:LEU:HD23	1:B:9:VAL:N	2.24	0.53
2:Y:948:LEU:HD22	2:Y:956:ARG:NH2	2.24	0.53
1:B:100:THR:HB	1:B:101:PRO:HD3	1.89	0.53
1:A:72:LEU:HD13	2:Y:1010:MET:CB	2.39	0.53
1:A:100:THR:HB	1:A:101:PRO:HD3	1.91	0.52
1:B:80:ILE:CD1	1:B:103:VAL:HG13	2.40	0.52
2:Y:974:LYS:O	2:Y:976:GLU:N	2.43	0.52
1:A:8:LEU:HD23	1:A:9:VAL:N	2.23	0.52
2:Y:962:LEU:C	2:Y:962:LEU:HD23	2.30	0.52
1:A:72:LEU:HD13	2:Y:1010:MET:HB3	1.92	0.52
1:B:172:GLU:O	1:B:176:ARG:HG3	2.10	0.52
1:B:122:ARG:HH22	1:B:158:GLU:CD	2.14	0.52
2:X:962:LEU:HD22	2:Y:962:LEU:CD2	2.40	0.52
1:A:80:ILE:CD1	1:A:103:VAL:HG13	2.40	0.51
1:B:93:GLU:O	1:B:96:PRO:HD2	2.10	0.51
2:X:966:MET:SD	2:Y:966:MET:SD	3.09	0.51
1:A:172:GLU:O	1:A:176:ARG:HG3	2.11	0.51
1:A:93:GLU:O	1:A:96:PRO:HD2	2.11	0.51
1:A:168:ARG:O	1:A:172:GLU:HG3	2.11	0.50
2:X:972:GLU:O	2:X:974:LYS:N	2.44	0.50
1:B:67:ASP:OD1	1:B:70:ARG:NH2	2.41	0.50
1:A:144:GLY:HA3	1:A:156:TYR:CZ	2.47	0.50
1:B:23:ILE:HD11	1:B:42:TYR:CZ	2.47	0.50
1:A:180:GLN:O	1:A:181:ALA:HB2	2.12	0.49
1:B:168:ARG:O	1:B:172:GLU:HG3	2.12	0.49
1:B:41:ASN:HD22	1:B:58:TRP:HA	1.76	0.49
1:A:122:ARG:NH2	1:A:158:GLU:OE2	2.45	0.49
2:Y:984:LEU:HD23	2:Y:984:LEU:C	2.34	0.49
1:B:95:ILE:HB	1:B:96:PRO:HD3	1.95	0.48
1:A:95:ILE:HB	1:A:96:PRO:HD3	1.96	0.48
2:X:988:PHE:CD2	2:Y:988:PHE:HB3	2.49	0.48
1:B:85:SER:OG	1:B:118:LYS:HD2	2.14	0.47
1:B:7:LYS:HE3	1:B:58:TRP:CE2	2.49	0.47
2:X:972:GLU:C	2:X:974:LYS:H	2.18	0.47
1:A:85:SER:OG	1:A:118:LYS:HD2	2.15	0.47

Continued on next page...

Continued from previous page...

Atom-1	Atom-2	Interatomic distance (Å)	Clash overlap (Å)
2:Y:974:LYS:C	2:Y:976:GLU:N	2.68	0.46
2:Y:1011:ASN:HD22	2:Y:1012:ARG:N	2.14	0.46
2:X:966:MET:HG2	2:Y:966:MET:HG3	1.97	0.46
1:B:144:GLY:HA3	1:B:156:TYR:CZ	2.51	0.46
1:B:81:LEU:HD23	1:B:113:ILE:HB	1.98	0.46
2:X:956:ARG:O	2:X:960:GLU:HB2	2.17	0.45
1:A:81:LEU:HD23	1:A:113:ILE:HB	1.99	0.45
2:X:980:GLU:O	2:X:984:LEU:HB2	2.16	0.45
1:A:122:ARG:O	1:A:128:ARG:NH1	2.50	0.45
1:A:122:ARG:NH2	1:A:141:PRO:HG3	2.32	0.44
2:Y:951:ASP:O	2:Y:955:LEU:HD13	2.17	0.44
1:B:70:ARG:N	1:B:71:PRO:HD2	2.33	0.44
1:B:14:GLY:O	1:B:15:ALA:HB3	2.18	0.44
1:B:113:ILE:HD12	1:B:173:MET:HG2	1.99	0.43
1:B:6:LYS:HE3	1:B:179:LEU:HD12	2.01	0.43
2:Y:992:ILE:HG23	2:Y:993:ASN:N	2.34	0.43
1:B:122:ARG:NH2	1:B:141:PRO:HG3	2.34	0.43
1:A:41:ASN:HD22	1:A:58:TRP:HA	1.82	0.43
2:Y:983:ASN:N	2:Y:983:ASN:ND2	2.63	0.43
1:B:122:ARG:NH2	1:B:158:GLU:OE2	2.52	0.43
1:A:14:GLY:O	1:A:15:ALA:HB3	2.19	0.42
2:Y:1011:ASN:HD22	2:Y:1012:ARG:H	1.66	0.42
1:A:70:ARG:N	1:A:71:PRO:HD2	2.34	0.42
2:Y:951:ASP:O	2:Y:954:ILE:HG22	2.19	0.42
2:X:972:GLU:C	2:X:974:LYS:N	2.72	0.42
1:B:19:THR:O	1:B:23:ILE:HG12	2.20	0.42
1:A:98:LYS:O	1:A:101:PRO:HD2	2.20	0.42
1:A:49:ASP:OD2	1:A:176:ARG:NH1	2.52	0.42
2:Y:964:GLU:OE1	2:Y:967:LYS:HD3	2.20	0.42
2:X:1011:ASN:ND2	2:X:1012:ARG:NH2	2.60	0.41
2:Y:1006:LEU:O	2:Y:1010:MET:HG2	2.20	0.41
2:Y:987:ALA:HA	2:Y:990:LYS:HG3	2.01	0.41
1:A:67:ASP:OD1	1:A:70:ARG:NH2	2.45	0.41
1:A:10:ILE:HG21	1:A:22:LEU:HD11	2.02	0.41
1:B:10:ILE:HG21	1:B:22:LEU:HD11	2.02	0.41
2:X:964:GLU:O	2:X:968:LYS:HE2	2.21	0.41
1:A:103:VAL:HG11	1:A:112:ILE:CD1	2.50	0.41
2:X:958:GLU:O	2:X:962:LEU:HB2	2.20	0.41
1:B:103:VAL:HG11	1:B:112:ILE:CD1	2.50	0.41
2:X:966:MET:SD	2:Y:966:MET:CG	3.09	0.40
2:Y:987:ALA:O	2:Y:990:LYS:HG3	2.21	0.40

Continued on next page...

Continued from previous page...

Atom-1	Atom-2	Interatomic distance (Å)	Clash overlap (Å)
2:X:1011:ASN:HB3	2:X:1012:ARG:HH21	1.84	0.40
1:A:19:THR:O	1:A:23:ILE:HG12	2.22	0.40
1:B:98:LYS:O	1:B:101:PRO:HD2	2.21	0.40
1:B:52:GLN:OE1	1:B:52:GLN:HA	2.21	0.40
2:X:962:LEU:HD22	2:Y:962:LEU:HD21	2.03	0.40
1:A:24:VAL:HG13	1:A:164:LYS:HE3	2.03	0.40
1:B:24:VAL:HG13	1:B:164:LYS:HE3	2.03	0.40
2:Y:983:ASN:H	2:Y:983:ASN:HD22	1.68	0.40

There are no symmetry-related clashes.

5.3 Torsion angles [i](#)

5.3.1 Protein backbone [i](#)

In the following table, the Percentiles column shows the percent Ramachandran outliers of the chain as a percentile score with respect to all X-ray entries followed by that with respect to entries of similar resolution.

The Analysed column shows the number of residues for which the backbone conformation was analysed, and the total number of residues.

Mol	Chain	Analysed	Favoured	Allowed	Outliers	Percentiles	
1	A	177/183 (97%)	169 (96%)	7 (4%)	1 (1%)	27	51
1	B	177/183 (97%)	167 (94%)	9 (5%)	1 (1%)	27	51
2	X	67/71 (94%)	64 (96%)	2 (3%)	1 (2%)	11	23
2	Y	68/71 (96%)	60 (88%)	6 (9%)	2 (3%)	5	8
All	All	489/508 (96%)	460 (94%)	24 (5%)	5 (1%)	17	35

All (5) Ramachandran outliers are listed below:

Mol	Chain	Res	Type
1	A	180	GLN
1	B	180	GLN
2	X	973	TYR
2	Y	975	LEU
2	Y	950	LYS

5.3.2 Protein sidechains ⓘ

In the following table, the Percentiles column shows the percent sidechain outliers of the chain as a percentile score with respect to all X-ray entries followed by that with respect to entries of similar resolution.

The Analysed column shows the number of residues for which the sidechain conformation was analysed, and the total number of residues.

Mol	Chain	Analysed	Rotameric	Outliers	Percentiles	
1	A	154/158 (98%)	148 (96%)	6 (4%)	35	62
1	B	154/158 (98%)	149 (97%)	5 (3%)	42	69
2	X	60/65 (92%)	55 (92%)	5 (8%)	12	24
2	Y	63/65 (97%)	56 (89%)	7 (11%)	7	12
All	All	431/446 (97%)	408 (95%)	23 (5%)	25	48

All (23) residues with a non-rotameric sidechain are listed below:

Mol	Chain	Res	Type
1	A	65	ASP
1	A	69	LEU
1	A	92	LEU
1	A	97	GLU
1	A	168	ARG
1	A	179	LEU
1	B	69	LEU
1	B	92	LEU
1	B	97	GLU
1	B	168	ARG
1	B	179	LEU
2	X	948	LEU
2	X	962	LEU
2	X	983	ASN
2	X	1006	LEU
2	X	1012	ARG
2	Y	947	MET
2	Y	971	GLU
2	Y	978	GLU
2	Y	983	ASN
2	Y	990	LYS
2	Y	1006	LEU
2	Y	1011	ASN

Some sidechains can be flipped to improve hydrogen bonding and reduce clashes. All (12) such sidechains are listed below:

Mol	Chain	Res	Type
1	A	29	GLN
1	A	41	ASN
1	A	126	HIS
1	A	149	ASN
1	B	41	ASN
1	B	149	ASN
2	X	959	ASN
2	X	983	ASN
2	X	1011	ASN
2	Y	959	ASN
2	Y	983	ASN
2	Y	1011	ASN

5.3.3 RNA [i](#)

There are no RNA molecules in this entry.

5.4 Non-standard residues in protein, DNA, RNA chains [i](#)

There are no non-standard protein/DNA/RNA residues in this entry.

5.5 Carbohydrates [i](#)

There are no carbohydrates in this entry.

5.6 Ligand geometry [i](#)

Of 4 ligands modelled in this entry, 2 are monoatomic - leaving 2 for Mogul analysis.

In the following table, the Counts columns list the number of bonds (or angles) for which Mogul statistics could be retrieved, the number of bonds (or angles) that are observed in the model and the number of bonds (or angles) that are defined in the Chemical Component Dictionary. The Link column lists molecule types, if any, to which the group is linked. The Z score for a bond length (or angle) is the number of standard deviations the observed value is removed from the expected value. A bond length (or angle) with $|Z| > 2$ is considered an outlier worth inspection. RMSZ is the root-mean-square of all Z scores of the bond lengths (or angles).

Mol	Type	Chain	Res	Link	Bond lengths			Bond angles		
					Counts	RMSZ	# Z > 2	Counts	RMSZ	# Z > 2
4	GNP	A	200	3	27,34,34	2.51	7 (25%)	30,54,54	1.92	4 (13%)
4	GNP	B	1200	3	27,34,34	2.59	7 (25%)	30,54,54	1.93	4 (13%)

In the following table, the Chirals column lists the number of chiral outliers, the number of chiral centers analysed, the number of these observed in the model and the number defined in the Chemical Component Dictionary. Similar counts are reported in the Torsion and Rings columns. '-' means no outliers of that kind were identified.

Mol	Type	Chain	Res	Link	Chirals	Torsions	Rings
4	GNP	A	200	3	-	0/16/38/38	0/3/3/3
4	GNP	B	1200	3	-	0/16/38/38	0/3/3/3

All (14) bond length outliers are listed below:

Mol	Chain	Res	Type	Atoms	Z	Observed(Å)	Ideal(Å)
4	B	1200	GNP	C4-N9	-7.91	1.37	1.47
4	A	200	GNP	C4-N9	-7.73	1.37	1.47
4	B	1200	GNP	C5-C6	-5.59	1.43	1.52
4	A	200	GNP	C5-C6	-5.12	1.43	1.52
4	A	200	GNP	PG-O2G	-4.85	1.43	1.56
4	B	1200	GNP	PG-O2G	-4.55	1.44	1.56
4	B	1200	GNP	PB-O2B	-3.05	1.48	1.56
4	A	200	GNP	PB-O2B	-2.90	1.48	1.56
4	A	200	GNP	C8-N9	-2.75	1.38	1.46
4	B	1200	GNP	C8-N9	-2.74	1.38	1.46
4	B	1200	GNP	C5-C4	-2.15	1.39	1.52
4	A	200	GNP	C5-C4	-2.11	1.39	1.52
4	A	200	GNP	C6-N1	5.24	1.41	1.33
4	B	1200	GNP	C6-N1	5.68	1.42	1.33

All (8) bond angle outliers are listed below:

Mol	Chain	Res	Type	Atoms	Z	Observed(°)	Ideal(°)
4	A	200	GNP	C5-C6-N1	-5.45	111.78	118.27
4	B	1200	GNP	C5-C6-N1	-5.40	111.84	118.27
4	B	1200	GNP	O3G-PG-O2G	-2.54	100.69	107.61
4	A	200	GNP	O3G-PG-O2G	-2.38	101.12	107.61
4	B	1200	GNP	O6-C6-C5	3.70	127.46	119.82
4	A	200	GNP	O6-C6-C5	3.82	127.70	119.82
4	A	200	GNP	C4-C5-N7	6.15	110.61	102.46
4	B	1200	GNP	C4-C5-N7	6.30	110.81	102.46

There are no chirality outliers.

There are no torsion outliers.

There are no ring outliers.

No monomer is involved in short contacts.

5.7 Other polymers

There are no such residues in this entry.

5.8 Polymer linkage issues

There are no chain breaks in this entry.

6 Fit of model and data ⓘ

6.1 Protein, DNA and RNA chains ⓘ

In the following table, the column labelled ‘#RSRZ> 2’ contains the number (and percentage) of RSRZ outliers, followed by percent RSRZ outliers for the chain as percentile scores relative to all X-ray entries and entries of similar resolution. The OWAB column contains the minimum, median, 95th percentile and maximum values of the occupancy-weighted average B-factor per residue. The column labelled ‘Q< 0.9’ lists the number of (and percentage) of residues with an average occupancy less than 0.9.

Mol	Chain	Analysed	<RSRZ>	#RSRZ>2	OWAB(Å ²)	Q<0.9
1	A	179/183 (97%)	0.04	2 (1%) 80 77	15, 26, 46, 60	0
1	B	179/183 (97%)	0.06	4 (2%) 62 56	16, 29, 51, 67	0
2	X	69/71 (97%)	0.73	10 (14%) 2 1	20, 52, 85, 89	0
2	Y	70/71 (98%)	0.62	6 (8%) 10 7	21, 57, 67, 74	0
All	All	497/508 (97%)	0.22	22 (4%) 34 26	15, 31, 69, 89	0

All (22) RSRZ outliers are listed below:

Mol	Chain	Res	Type	RSRZ
1	A	181	ALA	4.9
1	B	181	ALA	4.4
2	X	975	LEU	4.0
2	X	973	TYR	3.9
2	Y	957	ARG	3.7
1	B	32	GLU	3.2
2	Y	946	SER	3.0
1	B	3	ALA	2.9
2	X	968	LYS	2.8
2	Y	988	PHE	2.8
2	X	988	PHE	2.8
2	X	977	LYS	2.7
2	X	983	ASN	2.6
2	X	967	LYS	2.5
1	A	52	GLN	2.5
2	Y	954	ILE	2.4
2	X	957	ARG	2.2
2	X	981	ILE	2.2
1	B	33	VAL	2.1
2	Y	950	LYS	2.1
2	X	976	GLU	2.1
2	Y	973	TYR	2.0

6.2 Non-standard residues in protein, DNA, RNA chains [i](#)

There are no non-standard protein/DNA/RNA residues in this entry.

6.3 Carbohydrates [i](#)

There are no carbohydrates in this entry.

6.4 Ligands [i](#)

In the following table, the Atoms column lists the number of modelled atoms in the group and the number defined in the chemical component dictionary. The B-factors column lists the minimum, median, 95th percentile and maximum values of B factors of atoms in the group. The column labelled 'Q< 0.9' lists the number of atoms with occupancy less than 0.9.

Mol	Type	Chain	Res	Atoms	RSCC	RSR	B-factors(\AA^2)	Q<0.9
3	MG	A	300	1/1	0.89	0.17	24,24,24,24	0
3	MG	B	1300	1/1	0.94	0.13	30,30,30,30	0
4	GNP	B	1200	32/32	0.97	0.14	22,28,31,36	0
4	GNP	A	200	32/32	0.98	0.13	13,20,24,27	0

6.5 Other polymers [i](#)

There are no such residues in this entry.