



# Full wwPDB X-ray Structure Validation Report ⓘ

Mar 13, 2018 – 02:14 pm GMT

PDB ID : 3S3K  
Title : Crystal structure of the catalytic domain of PTP10D from *Drosophila melanogaster* with a small molecular inhibitor para-NitroCatechol Sulphate  
Authors : Madan, L.L.; Gopal, B.  
Deposited on : 2011-05-18  
Resolution : 3.20 Å(reported)

This is a Full wwPDB X-ray Structure Validation Report for a publicly released PDB entry.

We welcome your comments at [validation@mail.wwpdb.org](mailto:validation@mail.wwpdb.org)

A user guide is available at

<https://www.wwpdb.org/validation/2017/XrayValidationReportHelp>

with specific help available everywhere you see the ⓘ symbol.

---

The following versions of software and data (see [references ⓘ](#)) were used in the production of this report:

MolProbity : 4.02b-467  
Mogul : 1.7.3 (157068), CSD as539be (2018)  
Xtriage (Phenix) : 1.13  
EDS : trunk31020  
Percentile statistics : 20171227.v01 (using entries in the PDB archive December 27th 2017)  
Refmac : 5.8.0158  
CCP4 : 7.0 (Gargrove)  
Ideal geometry (proteins) : Engh & Huber (2001)  
Ideal geometry (DNA, RNA) : Parkinson et al. (1996)  
Validation Pipeline (wwPDB-VP) : trunk31020

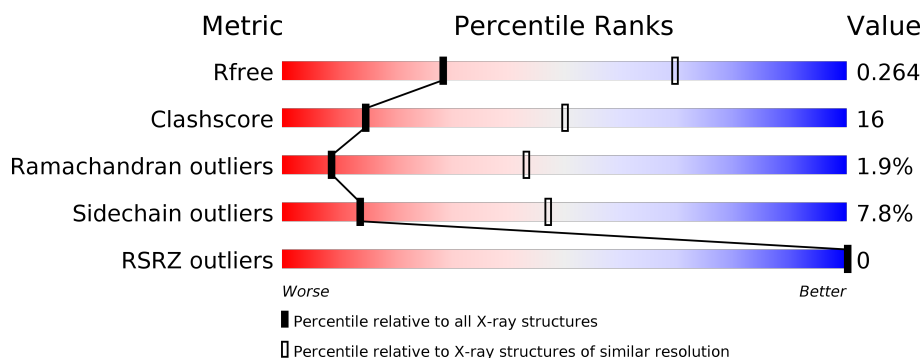
# 1 Overall quality at a glance

The following experimental techniques were used to determine the structure:

## *X-RAY DIFFRACTION*

The reported resolution of this entry is 3.20 Å.

Percentile scores (ranging between 0-100) for global validation metrics of the entry are shown in the following graphic. The table shows the number of entries on which the scores are based.



Metric	Whole archive (#Entries)	Similar resolution (#Entries, resolution range(Å))
$R_{free}$	111664	1121 (3.22-3.18)
Clashscore	122126	1091 (3.20-3.20)
Ramachandran outliers	120053	1074 (3.20-3.20)
Sidechain outliers	120020	1073 (3.20-3.20)
RSRZ outliers	108989	1083 (3.22-3.18)

The table below summarises the geometric issues observed across the polymeric chains and their fit to the electron density. The red, orange, yellow and green segments on the lower bar indicate the fraction of residues that contain outliers for  $\geq 3$ , 2, 1 and 0 types of geometric quality criteria. A grey segment represents the fraction of residues that are not modelled. The numeric value for each fraction is indicated below the corresponding segment, with a dot representing fractions  $\leq 5\%$ . The upper red bar (where present) indicates the fraction of residues that have poor fit to the electron density. The numeric value is given above the bar.

Mol	Chain	Length	Quality of chain
1	A	307	
1	B	307	

## 2 Entry composition

There are 3 unique types of molecules in this entry. The entry contains 4704 atoms, of which 0 are hydrogens and 0 are deuteriums.

In the tables below, the ZeroOcc column contains the number of atoms modelled with zero occupancy, the AltConf column contains the number of residues with at least one atom in alternate conformation and the Trace column contains the number of residues modelled with at most 2 atoms.

- Molecule 1 is a protein called Tyrosine-protein phosphatase 10D.

Mol	Chain	Residues	Atoms					ZeroOcc	AltConf	Trace
1	A	287	Total	C	N	O	S	0	0	0
			2345	1490	420	418	17			
1	B	285	Total	C	N	O	S	0	0	0
			2318	1469	414	418	17			

There are 46 discrepancies between the modelled and reference sequences:

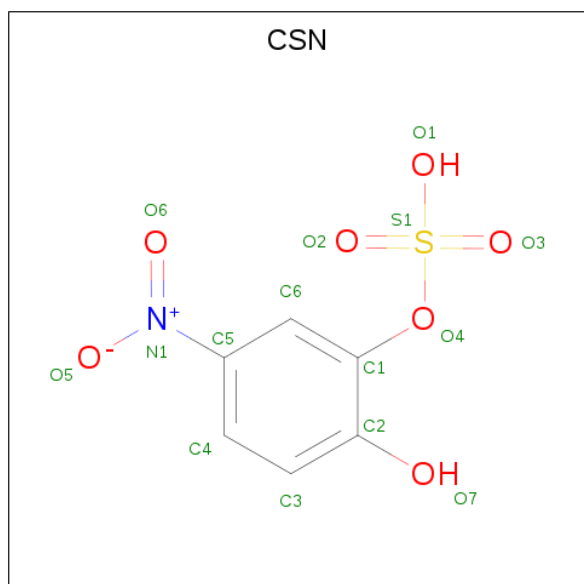
Chain	Residue	Modelled	Actual	Comment	Reference
A	1	MET	-	EXPRESSION TAG	UNP P35992
A	2	GLY	-	EXPRESSION TAG	UNP P35992
A	3	SER	-	EXPRESSION TAG	UNP P35992
A	4	SER	-	EXPRESSION TAG	UNP P35992
A	5	HIS	-	EXPRESSION TAG	UNP P35992
A	6	HIS	-	EXPRESSION TAG	UNP P35992
A	7	HIS	-	EXPRESSION TAG	UNP P35992
A	8	HIS	-	EXPRESSION TAG	UNP P35992
A	9	HIS	-	EXPRESSION TAG	UNP P35992
A	10	HIS	-	EXPRESSION TAG	UNP P35992
A	11	SER	-	EXPRESSION TAG	UNP P35992
A	12	SER	-	EXPRESSION TAG	UNP P35992
A	13	GLY	-	EXPRESSION TAG	UNP P35992
A	14	LEU	-	EXPRESSION TAG	UNP P35992
A	15	VAL	-	EXPRESSION TAG	UNP P35992
A	16	PRO	-	EXPRESSION TAG	UNP P35992
A	17	ARG	-	EXPRESSION TAG	UNP P35992
A	18	GLY	-	EXPRESSION TAG	UNP P35992
A	19	SER	-	EXPRESSION TAG	UNP P35992
A	20	HIS	-	EXPRESSION TAG	UNP P35992
A	21	MET	-	EXPRESSION TAG	UNP P35992
A	22	ALA	-	EXPRESSION TAG	UNP P35992
A	23	SER	-	EXPRESSION TAG	UNP P35992
B	1	MET	-	EXPRESSION TAG	UNP P35992
B	2	GLY	-	EXPRESSION TAG	UNP P35992

*Continued on next page...*

Continued from previous page...

Chain	Residue	Modelled	Actual	Comment	Reference
B	3	SER	-	EXPRESSION TAG	UNP P35992
B	4	SER	-	EXPRESSION TAG	UNP P35992
B	5	HIS	-	EXPRESSION TAG	UNP P35992
B	6	HIS	-	EXPRESSION TAG	UNP P35992
B	7	HIS	-	EXPRESSION TAG	UNP P35992
B	8	HIS	-	EXPRESSION TAG	UNP P35992
B	9	HIS	-	EXPRESSION TAG	UNP P35992
B	10	HIS	-	EXPRESSION TAG	UNP P35992
B	11	SER	-	EXPRESSION TAG	UNP P35992
B	12	SER	-	EXPRESSION TAG	UNP P35992
B	13	GLY	-	EXPRESSION TAG	UNP P35992
B	14	LEU	-	EXPRESSION TAG	UNP P35992
B	15	VAL	-	EXPRESSION TAG	UNP P35992
B	16	PRO	-	EXPRESSION TAG	UNP P35992
B	17	ARG	-	EXPRESSION TAG	UNP P35992
B	18	GLY	-	EXPRESSION TAG	UNP P35992
B	19	SER	-	EXPRESSION TAG	UNP P35992
B	20	HIS	-	EXPRESSION TAG	UNP P35992
B	21	MET	-	EXPRESSION TAG	UNP P35992
B	22	ALA	-	EXPRESSION TAG	UNP P35992
B	23	SER	-	EXPRESSION TAG	UNP P35992

- Molecule 2 is N,4-DIHYDROXY-N-OXO-3-(SULFOOXY)BENZENAMINIUM (three-letter code: CSN) (formula: C<sub>6</sub>H<sub>5</sub>NO<sub>7</sub>S).



Mol	Chain	Residues	Atoms					ZeroOcc	AltConf
2	B	1	Total	C	N	O	S	0	0
			15	6	1	7	1		

- Molecule 3 is water.

Mol	Chain	Residues	Atoms		ZeroOcc	AltConf
3	A	7	Total	O	0	0
			7	7		
3	B	19	Total	O	0	0
			19	19		

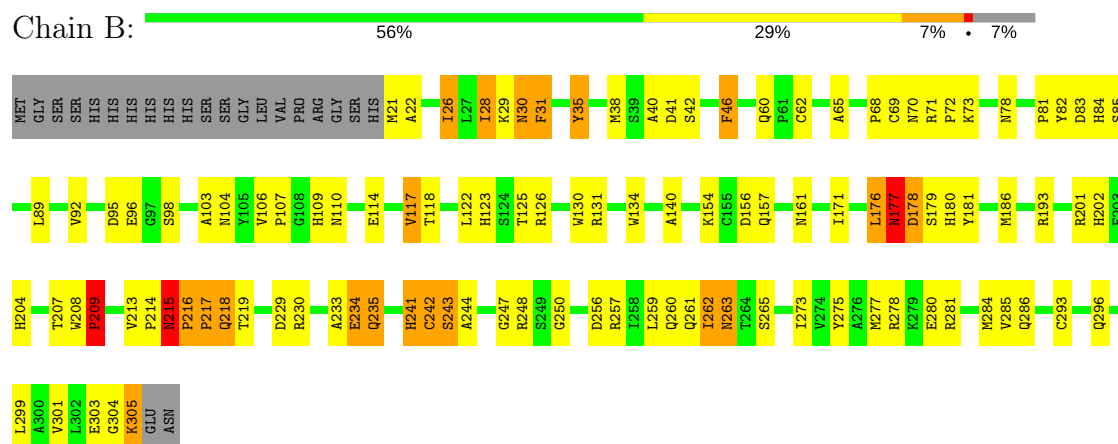
### 3 Residue-property plots

These plots are drawn for all protein, RNA and DNA chains in the entry. The first graphic for a chain summarises the proportions of the various outlier classes displayed in the second graphic. The second graphic shows the sequence view annotated by issues in geometry and electron density. Residues are color-coded according to the number of geometric quality criteria for which they contain at least one outlier: green = 0, yellow = 1, orange = 2 and red = 3 or more. A red dot above a residue indicates a poor fit to the electron density ( $RSRZ > 2$ ). Stretches of 2 or more consecutive residues without any outlier are shown as a green connector. Residues present in the sample, but not in the model, are shown in grey.

#### • Molecule 1: Tyrosine-protein phosphatase 10D



#### • Molecule 1: Tyrosine-protein phosphatase 10D



## 4 Data and refinement statistics

Property	Value	Source
Space group	P 31 2 1	Depositor
Cell constants a, b, c, $\alpha$ , $\beta$ , $\gamma$	102.51Å 102.51Å 172.80Å 90.00° 90.00° 120.00°	Depositor
Resolution (Å)	44.08 – 3.20 44.08 – 3.20	Depositor EDS
% Data completeness (in resolution range)	96.2 (44.08-3.20) 96.2 (44.08-3.20)	Depositor EDS
$R_{merge}$	0.16	Depositor
$R_{sym}$	(Not available)	Depositor
$\langle I/\sigma(I) \rangle$ <sup>1</sup>	2.37 (at 3.19Å)	Xtriage
Refinement program	REFMAC 5.5.0109	Depositor
R, $R_{free}$	0.253 , 0.309 0.222 , 0.264	Depositor DCC
$R_{free}$ test set	880 reflections (5.11%)	wwPDB-VP
Wilson B-factor (Å <sup>2</sup> )	39.1	Xtriage
Anisotropy	0.027	Xtriage
Bulk solvent $k_{sol}$ (e/Å <sup>3</sup> ), $B_{sol}$ (Å <sup>2</sup> )	0.33 , 56.6	EDS
L-test for twinning <sup>2</sup>	$\langle  L  \rangle = 0.46$ , $\langle L^2 \rangle = 0.29$	Xtriage
Estimated twinning fraction	0.047 for -h,-k,l	Xtriage
$F_o, F_c$ correlation	0.86	EDS
Total number of atoms	4704	wwPDB-VP
Average B, all atoms (Å <sup>2</sup> )	53.0	wwPDB-VP

Xtriage's analysis on translational NCS is as follows: *The largest off-origin peak in the Patterson function is 3.56% of the height of the origin peak. No significant pseudotranslation is detected.*

<sup>1</sup>Intensities estimated from amplitudes.

<sup>2</sup>Theoretical values of  $\langle |L| \rangle$ ,  $\langle L^2 \rangle$  for acentric reflections are 0.5, 0.333 respectively for untwinned datasets, and 0.375, 0.2 for perfectly twinned datasets.

## 5 Model quality

### 5.1 Standard geometry

Bond lengths and bond angles in the following residue types are not validated in this section: CSN

The Z score for a bond length (or angle) is the number of standard deviations the observed value is removed from the expected value. A bond length (or angle) with  $|Z| > 5$  is considered an outlier worth inspection. RMSZ is the root-mean-square of all Z scores of the bond lengths (or angles).

Mol	Chain	Bond lengths		Bond angles	
		RMSZ	$\# Z  > 5$	RMSZ	$\# Z  > 5$
1	A	0.70	5/2412 (0.2%)	0.65	1/3272 (0.0%)
1	B	0.74	4/2383 (0.2%)	0.66	1/3236 (0.0%)
All	All	0.72	9/4795 (0.2%)	0.65	2/6508 (0.0%)

All (9) bond length outliers are listed below:

Mol	Chain	Res	Type	Atoms	Z	Observed(Å)	Ideal(Å)
1	B	242	CYS	CB-SG	-11.89	1.62	1.82
1	A	158	TYR	CE1-CZ	-8.18	1.27	1.38
1	A	242	CYS	CB-SG	-6.27	1.71	1.82
1	A	158	TYR	CE2-CZ	-5.92	1.30	1.38
1	A	283	TRP	CB-CG	-5.44	1.40	1.50
1	A	282	VAL	CB-CG2	-5.41	1.41	1.52
1	B	35	TYR	CE2-CZ	-5.23	1.31	1.38
1	B	31	PHE	CD2-CE2	-5.22	1.28	1.39
1	B	35	TYR	CD1-CE1	-5.09	1.31	1.39

All (2) bond angle outliers are listed below:

Mol	Chain	Res	Type	Atoms	Z	Observed(°)	Ideal(°)
1	A	198	ARG	NE-CZ-NH2	-6.66	116.97	120.30
1	B	176	LEU	CA-CB-CG	6.18	129.52	115.30

There are no chirality outliers.

There are no planarity outliers.



## 5.2 Too-close contacts ⓘ

In the following table, the Non-H and H(model) columns list the number of non-hydrogen atoms and hydrogen atoms in the chain respectively. The H(added) column lists the number of hydrogen atoms added and optimized by MolProbity. The Clashes column lists the number of clashes within the asymmetric unit, whereas Symm-Clashes lists symmetry related clashes.

Mol	Chain	Non-H	H(model)	H(added)	Clashes	Symm-Clashes
1	A	2345	0	2225	62	0
1	B	2318	0	2195	87	0
2	B	15	0	5	2	0
3	A	7	0	0	0	0
3	B	19	0	0	0	0
All	All	4704	0	4425	148	0

The all-atom clashscore is defined as the number of clashes found per 1000 atoms (including hydrogen atoms). The all-atom clashscore for this structure is 16.

All (148) close contacts within the same asymmetric unit are listed below, sorted by their clash magnitude.

Atom-1	Atom-2	Interatomic distance (Å)	Clash overlap (Å)
1:B:29:LYS:C	1:B:30:ASN:HD22	1.46	1.18
1:B:304:GLY:O	1:B:305:LYS:HB2	1.41	1.12
1:B:176:LEU:O	1:B:177:ASN:HB2	1.51	1.04
1:A:95:ASP:HB3	1:A:98:SER:HB3	1.39	1.04
1:B:28:ILE:HD11	1:B:262:ILE:HG22	1.45	0.96
1:B:29:LYS:C	1:B:30:ASN:ND2	2.30	0.85
1:B:30:ASN:N	1:B:30:ASN:HD22	1.72	0.83
1:B:244:ALA:HB2	2:B:308:CSN:H6	1.61	0.82
1:B:179:SER:HB2	1:B:186:MET:HB3	1.67	0.77
1:B:235:GLN:O	1:B:235:GLN:HG3	1.89	0.71
1:B:176:LEU:O	1:B:177:ASN:CB	2.30	0.69
1:B:215:ASN:ND2	1:B:216:PRO:HD3	2.09	0.68
1:B:304:GLY:O	1:B:305:LYS:CB	2.29	0.67
1:B:233:ALA:HA	1:B:234:GLU:HG2	1.76	0.66
1:B:35:TYR:OH	1:B:296:GLN:HG2	1.96	0.66
1:A:199:ILE:HG22	1:A:200:LEU:N	2.11	0.66
1:B:70:ASN:HA	1:B:73:LYS:HD2	1.77	0.65
1:B:299:LEU:O	1:B:303:GLU:HG3	1.95	0.64
1:B:29:LYS:O	1:B:30:ASN:ND2	2.30	0.64
1:A:246:VAL:O	1:A:284:MET:O	2.17	0.63
1:A:269:ASP:O	1:A:273:ILE:HG12	1.99	0.63
1:A:228:ARG:NH2	1:A:256:ASP:OD2	2.33	0.62

*Continued on next page...*

*Continued from previous page...*

Atom-1	Atom-2	Interatomic distance (Å)	Clash overlap (Å)
1:A:282:VAL:O	1:A:283:TRP:C	2.36	0.62
1:A:85:SER:C	1:A:104:ASN:HD22	2.04	0.61
1:A:246:VAL:HG23	1:A:247:GLY:H	1.65	0.61
1:A:54:LYS:HG3	1:A:55:HIS:CD2	2.35	0.61
1:A:70:ASN:HA	1:A:73:LYS:HD2	1.83	0.60
1:A:256:ASP:O	1:A:260:GLN:HG3	2.02	0.60
1:B:233:ALA:CB	1:B:235:GLN:H	2.15	0.60
1:B:233:ALA:HA	1:B:235:GLN:H	1.67	0.60
1:B:28:ILE:HD11	1:B:262:ILE:CG2	2.28	0.60
1:B:277:MET:HB3	1:B:284:MET:HG3	1.84	0.59
1:A:253:ILE:HG22	1:A:277:MET:HE1	1.84	0.59
1:A:253:ILE:HG22	1:A:277:MET:CE	2.33	0.59
1:B:241:HIS:C	1:B:241:HIS:ND1	2.56	0.59
1:B:278:ARG:NH2	1:B:285:VAL:O	2.35	0.59
1:A:90:GLN:O	1:A:131:ARG:NH2	2.37	0.58
1:A:246:VAL:HG23	1:A:247:GLY:N	2.19	0.58
1:A:208:TRP:HB3	1:A:248:ARG:NH2	2.19	0.57
1:B:30:ASN:ND2	1:B:30:ASN:N	2.46	0.57
1:A:95:ASP:CB	1:A:98:SER:HB3	2.24	0.57
1:B:233:ALA:CA	1:B:235:GLN:H	2.18	0.57
1:B:216:PRO:O	1:B:218:GLN:N	2.37	0.56
1:B:71:ARG:N	1:B:72:PRO:HD2	2.21	0.56
1:A:199:ILE:CG2	1:A:200:LEU:N	2.69	0.56
1:A:208:TRP:CD2	1:A:248:ARG:HD3	2.41	0.55
1:B:107:PRO:HD3	1:B:280:GLU:HG3	1.87	0.55
1:A:259:LEU:HD21	1:A:301:VAL:HG21	1.89	0.55
1:B:244:ALA:CB	2:B:308:CSN:H6	2.35	0.55
1:A:273:ILE:O	1:A:277:MET:HG3	2.08	0.54
1:B:109:HIS:HB2	1:B:257:ARG:HG3	1.88	0.54
1:B:92:VAL:H	1:B:98:SER:HB2	1.73	0.54
1:A:85:SER:HB3	1:A:104:ASN:HD22	1.71	0.54
1:A:103:ALA:HB2	1:A:118:THR:HB	1.90	0.53
1:A:282:VAL:HG22	1:A:283:TRP:N	2.24	0.53
1:B:41:ASP:O	1:B:42:SER:C	2.46	0.53
1:B:118:THR:O	1:B:241:HIS:HB2	2.09	0.53
1:B:81:PRO:HA	1:B:104:ASN:HD21	1.74	0.53
1:A:85:SER:CB	1:A:104:ASN:HD22	2.22	0.53
1:B:122:LEU:HB2	1:B:125:THR:HG23	1.91	0.53
1:B:247:GLY:N	1:B:284:MET:O	2.32	0.53
1:A:89:LEU:HB3	1:A:131:ARG:NH2	2.24	0.52
1:A:90:GLN:HB2	1:A:135:GLU:OE2	2.10	0.52

*Continued on next page...*

*Continued from previous page...*

Atom-1	Atom-2	Interatomic distance (Å)	Clash overlap (Å)
1:B:103:ALA:HB2	1:B:118:THR:HB	1.93	0.51
1:A:220:LEU:O	1:A:224:VAL:HG23	2.11	0.51
1:B:95:ASP:OD1	1:B:95:ASP:C	2.50	0.50
1:B:104:ASN:HD22	1:B:281:ARG:HD2	1.75	0.50
1:A:33:GLU:OE1	1:A:36:ARG:NH1	2.44	0.50
1:B:181:TYR:OH	1:B:230:ARG:NH2	2.45	0.50
1:A:34:HIS:O	1:A:38:MET:HG2	2.11	0.50
1:A:26:ILE:HG12	1:A:34:HIS:CD2	2.47	0.50
1:A:253:ILE:CG2	1:A:277:MET:CE	2.90	0.49
1:B:208:TRP:O	1:B:209:PRO:O	2.30	0.49
1:B:104:ASN:HD22	1:B:281:ARG:HH11	1.59	0.49
1:B:207:THR:O	1:B:208:TRP:C	2.51	0.49
1:B:21:MET:CG	1:B:22:ALA:H	2.26	0.49
1:A:246:VAL:HB	1:A:283:TRP:O	2.13	0.49
1:B:69:CYS:SG	1:B:96:GLU:HB2	2.53	0.49
1:A:71:ARG:N	1:A:72:PRO:HD2	2.27	0.49
1:B:247:GLY:HA2	1:B:286:GLN:H	1.78	0.49
1:A:79:ILE:HD12	1:A:246:VAL:HG11	1.95	0.48
1:A:134:TRP:CZ2	1:A:193:ARG:HB3	2.49	0.48
1:B:38:MET:HB3	1:B:46:PHE:CE2	2.49	0.48
1:B:21:MET:HG3	1:B:22:ALA:H	1.79	0.47
1:B:233:ALA:HA	1:B:235:GLN:N	2.28	0.47
1:B:106:VAL:CG2	1:B:117:VAL:HG13	2.44	0.47
1:B:171:ILE:HD13	1:B:193:ARG:HD2	1.95	0.47
1:B:261:GLN:O	1:B:263:ASN:N	2.48	0.47
1:B:259:LEU:HD21	1:B:301:VAL:HG21	1.97	0.47
1:B:65:ALA:HB2	1:B:81:PRO:HD2	1.96	0.47
1:A:47:SER:HA	1:A:288:GLU:OE1	2.15	0.47
1:B:123:HIS:CE1	1:B:126:ARG:NH2	2.84	0.46
1:B:60:GLN:HB2	1:B:82:TYR:CD1	2.50	0.46
1:A:261:GLN:C	1:A:263:ASN:H	2.19	0.46
1:A:253:ILE:CG2	1:A:277:MET:HE1	2.45	0.46
1:B:213:VAL:HG21	1:B:293:CYS:HB2	1.97	0.46
1:A:28:ILE:HG12	1:A:268:VAL:HG23	1.98	0.46
1:A:144:LEU:HD11	1:A:252:PHE:CB	2.46	0.45
1:A:281:ARG:HG3	1:A:282:VAL:N	2.31	0.45
1:B:104:ASN:ND2	1:B:281:ARG:HH11	2.14	0.45
1:B:208:TRP:C	1:B:209:PRO:O	2.54	0.45
1:B:89:LEU:HD22	1:B:131:ARG:HG2	1.99	0.45
1:B:126:ARG:HD3	1:B:156:ASP:OD2	2.16	0.45
1:A:282:VAL:O	1:A:284:MET:N	2.50	0.45

*Continued on next page...*

*Continued from previous page...*

Atom-1	Atom-2	Interatomic distance (Å)	Clash overlap (Å)
1:A:85:SER:CB	1:A:104:ASN:ND2	2.80	0.45
1:B:233:ALA:HA	1:B:234:GLU:CG	2.43	0.44
1:A:111:SER:HB3	1:A:114:GLU:HB2	1.99	0.44
1:B:26:ILE:HD13	1:B:26:ILE:C	2.38	0.44
1:B:178:ASP:HB2	1:B:180:HIS:CE1	2.52	0.44
1:B:202:HIS:CE1	1:B:204:HIS:HB2	2.53	0.44
1:A:85:SER:HB3	1:A:104:ASN:ND2	2.33	0.44
1:B:130:TRP:HB3	1:B:171:ILE:HG21	1.98	0.44
1:B:134:TRP:CZ2	1:B:193:ARG:HB3	2.53	0.44
1:B:71:ARG:N	1:B:72:PRO:CD	2.81	0.44
1:A:217:PRO:HB2	1:A:297:CYS:SG	2.58	0.43
1:A:231:ILE:HA	1:A:231:ILE:HD12	1.80	0.43
1:B:217:PRO:HG2	1:B:296:GLN:OE1	2.18	0.43
1:B:256:ASP:O	1:B:260:GLN:HG3	2.19	0.43
1:A:208:TRP:CD1	1:A:209:PRO:HD2	2.54	0.43
1:A:27:LEU:HD23	1:A:267:TYR:CZ	2.54	0.43
1:B:275:TYR:CD2	1:B:275:TYR:C	2.92	0.43
1:A:77:THR:HG23	1:B:68:PRO:HG3	2.00	0.43
1:B:92:VAL:H	1:B:98:SER:CB	2.30	0.43
1:B:110:ASN:N	1:B:114:GLU:OE1	2.48	0.43
1:B:208:TRP:CZ2	1:B:248:ARG:HG2	2.54	0.43
1:A:115:PHE:CE2	1:A:253:ILE:HG23	2.54	0.42
1:A:143:MET:HG3	1:A:241:HIS:CE1	2.53	0.42
1:B:178:ASP:N	1:B:178:ASP:OD2	2.52	0.42
1:A:148:PHE:CE1	1:A:153:GLU:HB2	2.54	0.42
1:A:109:HIS:HB2	1:A:257:ARG:HG3	2.00	0.42
1:B:273:ILE:O	1:B:277:MET:HG3	2.19	0.42
1:A:28:ILE:HD12	1:A:266:ASP:HA	2.01	0.42
1:A:183:ASP:HB3	1:A:207:THR:HB	2.01	0.42
1:B:250:GLY:HA2	1:B:284:MET:HE3	2.02	0.41
1:A:70:ASN:HB3	1:A:100:TYR:CD2	2.55	0.41
1:A:24:ARG:HH22	1:A:52:GLU:CD	2.23	0.41
1:B:154:LYS:O	1:B:243:SER:OG	2.27	0.41
1:B:305:LYS:HA	1:B:305:LYS:HD3	1.59	0.41
1:A:145:THR:OG1	1:A:146:ARG:N	2.53	0.41
1:B:26:ILE:HD12	1:B:31:PHE:CD1	2.55	0.41
1:B:233:ALA:HA	1:B:234:GLU:CB	2.50	0.41
1:A:21:MET:HG3	1:A:21:MET:O	2.20	0.41
1:B:140:ALA:HA	1:B:201:ARG:O	2.21	0.41
1:B:234:GLU:HG2	1:B:235:GLN:N	2.36	0.41
1:A:224:VAL:HG21	1:A:255:LEU:HD23	2.02	0.41

*Continued on next page...*

*Continued from previous page...*

Atom-1	Atom-2	Interatomic distance (Å)	Clash overlap (Å)
1:B:84:HIS:CD2	1:B:84:HIS:O	2.74	0.40
1:B:26:ILE:HD12	1:B:31:PHE:HD1	1.86	0.40
1:B:62:CYS:HA	1:B:83:ASP:OD1	2.21	0.40

There are no symmetry-related clashes.

## 5.3 Torsion angles [i](#)

### 5.3.1 Protein backbone [i](#)

In the following table, the Percentiles column shows the percent Ramachandran outliers of the chain as a percentile score with respect to all X-ray entries followed by that with respect to entries of similar resolution.

The Analysed column shows the number of residues for which the backbone conformation was analysed, and the total number of residues.

Mol	Chain	Analysed	Favoured	Allowed	Outliers	Percentiles	
1	A	285/307 (93%)	258 (90%)	25 (9%)	2 (1%)	24	66
1	B	283/307 (92%)	248 (88%)	26 (9%)	9 (3%)	4	29
All	All	568/614 (92%)	506 (89%)	51 (9%)	11 (2%)	9	43

All (11) Ramachandran outliers are listed below:

Mol	Chain	Res	Type
1	B	40	ALA
1	B	177	ASN
1	A	283	TRP
1	B	216	PRO
1	B	218	GLN
1	B	262	ILE
1	A	262	ILE
1	B	209	PRO
1	B	217	PRO
1	B	214	PRO
1	B	215	ASN

### 5.3.2 Protein sidechains ⓘ

In the following table, the Percentiles column shows the percent sidechain outliers of the chain as a percentile score with respect to all X-ray entries followed by that with respect to entries of similar resolution.

The Analysed column shows the number of residues for which the sidechain conformation was analysed, and the total number of residues.

Mol	Chain	Analysed	Rotameric	Outliers	Percentiles	
1	A	251/278 (90%)	235 (94%)	16 (6%)	19	56
1	B	250/278 (90%)	227 (91%)	23 (9%)	10	36
All	All	501/556 (90%)	462 (92%)	39 (8%)	14	47

All (39) residues with a non-rotameric sidechain are listed below:

Mol	Chain	Res	Type
1	A	20	HIS
1	A	33	GLU
1	A	46	PHE
1	A	66	ASP
1	A	90	GLN
1	A	95	ASP
1	A	117	VAL
1	A	146	ARG
1	A	207	THR
1	A	241	HIS
1	A	243	SER
1	A	261	GLN
1	A	266	ASP
1	A	280	GLU
1	A	281	ARG
1	A	305	LYS
1	B	26	ILE
1	B	28	ILE
1	B	30	ASN
1	B	46	PHE
1	B	78	ASN
1	B	85	SER
1	B	117	VAL
1	B	157	GLN
1	B	161	ASN
1	B	177	ASN
1	B	178	ASP

*Continued on next page...*

*Continued from previous page...*

Mol	Chain	Res	Type
1	B	209	PRO
1	B	215	ASN
1	B	219	THR
1	B	229	ASP
1	B	234	GLU
1	B	235	GLN
1	B	241	HIS
1	B	242	CYS
1	B	243	SER
1	B	263	ASN
1	B	265	SER
1	B	305	LYS

Some sidechains can be flipped to improve hydrogen bonding and reduce clashes. All (12) such sidechains are listed below:

Mol	Chain	Res	Type
1	A	55	HIS
1	A	104	ASN
1	A	109	HIS
1	B	30	ASN
1	B	60	GLN
1	B	84	HIS
1	B	104	ASN
1	B	177	ASN
1	B	180	HIS
1	B	215	ASN
1	B	261	GLN
1	B	290	GLN

### 5.3.3 RNA ⓘ

There are no RNA molecules in this entry.

### 5.4 Non-standard residues in protein, DNA, RNA chains ⓘ

There are no non-standard protein/DNA/RNA residues in this entry.

### 5.5 Carbohydrates ⓘ

There are no carbohydrates in this entry.

## 5.6 Ligand geometry

1 ligand is modelled in this entry.

In the following table, the Counts columns list the number of bonds (or angles) for which Mogul statistics could be retrieved, the number of bonds (or angles) that are observed in the model and the number of bonds (or angles) that are defined in the Chemical Component Dictionary. The Link column lists molecule types, if any, to which the group is linked. The Z score for a bond length (or angle) is the number of standard deviations the observed value is removed from the expected value. A bond length (or angle) with  $|Z| > 2$  is considered an outlier worth inspection. RMSZ is the root-mean-square of all Z scores of the bond lengths (or angles).

Mol	Type	Chain	Res	Link	Bond lengths			Bond angles		
					Counts	RMSZ	$\# Z  > 2$	Counts	RMSZ	$\# Z  > 2$
2	CSN	B	308	-	13,15,15	4.81	6 (46%)	18,22,22	2.01	2 (11%)

In the following table, the Chirals column lists the number of chiral outliers, the number of chiral centers analysed, the number of these observed in the model and the number defined in the Chemical Component Dictionary. Similar counts are reported in the Torsion and Rings columns. '-' means no outliers of that kind were identified.

Mol	Type	Chain	Res	Link	Chirals	Torsions	Rings
2	CSN	B	308	-	-	0/7/9/9	0/1/1/1

All (6) bond length outliers are listed below:

Mol	Chain	Res	Type	Atoms	Z	Observed(Å)	Ideal(Å)
2	B	308	CSN	C5-N1	-5.21	1.35	1.45
2	B	308	CSN	O4-C1	-2.38	1.37	1.42
2	B	308	CSN	O3-S1	2.10	1.53	1.45
2	B	308	CSN	C6-C5	8.11	1.53	1.39
2	B	308	CSN	C6-C1	8.20	1.53	1.38
2	B	308	CSN	O6-N1	11.12	1.42	1.22

All (2) bond angle outliers are listed below:

Mol	Chain	Res	Type	Atoms	Z	Observed(°)	Ideal(°)
2	B	308	CSN	C5-C6-C1	-6.33	111.55	119.14
2	B	308	CSN	C6-C1-C2	4.29	124.21	120.04

There are no chirality outliers.

There are no torsion outliers.

There are no ring outliers.

1 monomer is involved in 2 short contacts:



Mol	Chain	Res	Type	Clashes	Symm-Clashes
2	B	308	CSN	2	0

## 5.7 Other polymers [i](#)

There are no such residues in this entry.

## 5.8 Polymer linkage issues [i](#)

There are no chain breaks in this entry.

## 6 Fit of model and data [i](#)

### 6.1 Protein, DNA and RNA chains [i](#)

In the following table, the column labelled ‘#RSRZ > 2’ contains the number (and percentage) of RSRZ outliers, followed by percent RSRZ outliers for the chain as percentile scores relative to all X-ray entries and entries of similar resolution. The OWAB column contains the minimum, median, 95<sup>th</sup> percentile and maximum values of the occupancy-weighted average B-factor per residue. The column labelled ‘Q < 0.9’ lists the number of (and percentage) of residues with an average occupancy less than 0.9.

Mol	Chain	Analysed	<RSRZ>	#RSRZ>2	OWAB(Å <sup>2</sup> )	Q<0.9
1	A	287/307 (93%)	-0.45	0 100 100	27, 53, 81, 104	0
1	B	285/307 (92%)	-0.39	0 100 100	27, 52, 87, 120	0
All	All	572/614 (93%)	-0.42	0 100 100	27, 52, 83, 120	0

There are no RSRZ outliers to report.

### 6.2 Non-standard residues in protein, DNA, RNA chains [i](#)

There are no non-standard protein/DNA/RNA residues in this entry.

### 6.3 Carbohydrates [i](#)

There are no carbohydrates in this entry.

### 6.4 Ligands [i](#)

In the following table, the Atoms column lists the number of modelled atoms in the group and the number defined in the chemical component dictionary. The B-factors column lists the minimum, median, 95<sup>th</sup> percentile and maximum values of B factors of atoms in the group. The column labelled ‘Q < 0.9’ lists the number of atoms with occupancy less than 0.9.

Mol	Type	Chain	Res	Atoms	RSCC	RSR	B-factors(Å <sup>2</sup> )	Q<0.9
2	CSN	B	308	15/15	0.91	0.34	38,38,38,38	0

### 6.5 Other polymers [i](#)

There are no such residues in this entry.