



Full wwPDB X-ray Structure Validation Report ⓘ

Mar 8, 2018 – 09:24 pm GMT

PDB ID : 1TC2
Title : TERNARY SUBSTRATE COMPLEX OF THE HYPOXANTHINE PHOSPHORIBOSYLTRANSFERASE FROM TRYPANOSOMA CRUZI
Authors : Focia, P.J.; Craig III, S.P.; Eakin, A.E.
Deposited on : 1998-11-04
Resolution : 1.81 Å(reported)

This is a Full wwPDB X-ray Structure Validation Report for a publicly released PDB entry.

We welcome your comments at validation@mail.wwpdb.org

A user guide is available at

<https://www.wwpdb.org/validation/2017/XrayValidationReportHelp>

with specific help available everywhere you see the ⓘ symbol.

The following versions of software and data (see [references ⓘ](#)) were used in the production of this report:

MolProbity : 4.02b-467
Mogul : 1.7.3 (157068), CSD as539be (2018)
Xtriage (Phenix) : 1.13
EDS : trunk30967
Percentile statistics : 20171227.v01 (using entries in the PDB archive December 27th 2017)
Refmac : 5.8.0158
CCP4 : 7.0 (Gargrove)
Ideal geometry (proteins) : Engh & Huber (2001)
Ideal geometry (DNA, RNA) : Parkinson et al. (1996)
Validation Pipeline (wwPDB-VP) : trunk30967

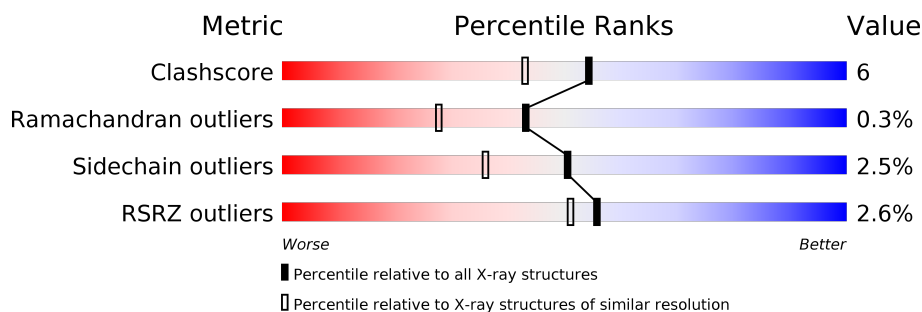
1 Overall quality at a glance

The following experimental techniques were used to determine the structure:

X-RAY DIFFRACTION

The reported resolution of this entry is 1.81 Å.

Percentile scores (ranging between 0-100) for global validation metrics of the entry are shown in the following graphic. The table shows the number of entries on which the scores are based.



Metric	Whole archive (#Entries)	Similar resolution (#Entries, resolution range(Å))
Clashscore	122126	7349 (1.84-1.80)
Ramachandran outliers	120053	7272 (1.84-1.80)
Sidechain outliers	120020	7272 (1.84-1.80)
RSRZ outliers	108989	6347 (1.84-1.80)

The table below summarises the geometric issues observed across the polymeric chains and their fit to the electron density. The red, orange, yellow and green segments on the lower bar indicate the fraction of residues that contain outliers for ≥ 3 , 2, 1 and 0 types of geometric quality criteria. A grey segment represents the fraction of residues that are not modelled. The numeric value for each fraction is indicated below the corresponding segment, with a dot representing fractions $\leq 5\%$. The upper red bar (where present) indicates the fraction of residues that have poor fit to the electron density. The numeric value is given above the bar.

Mol	Chain	Length	Quality of chain
1	A	221	
1	B	221	

2 Entry composition

There are 6 unique types of molecules in this entry. The entry contains 3300 atoms, of which 0 are hydrogens and 0 are deuteriums.

In the tables below, the ZeroOcc column contains the number of atoms modelled with zero occupancy, the AltConf column contains the number of residues with at least one atom in alternate conformation and the Trace column contains the number of residues modelled with at most 2 atoms.

- Molecule 1 is a protein called PROTEIN (HYPOXANTHINE PHOSPHORIBOSYLTRANSFERASE).

Mol	Chain	Residues	Atoms					ZeroOcc	AltConf	Trace
1	A	186	Total	C	N	O	S	0	0	0
			1465	946	246	266	7			
1	B	196	Total	C	N	O	S	0	0	0
			1574	1008	273	286	7			

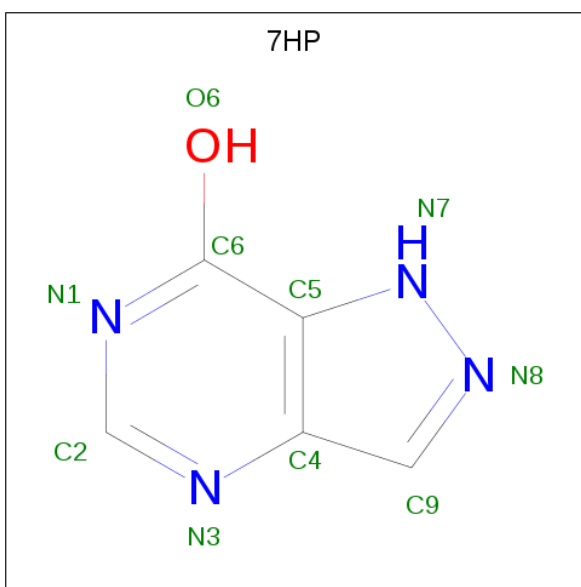
There are 6 discrepancies between the modelled and reference sequences:

Chain	Residue	Modelled	Actual	Comment	Reference
A	23	LYS	MET	VARIANT	UNP Q27796
A	66	CYS	SER	VARIANT	UNP Q27796
A	86	LEU	VAL	VARIANT	UNP Q27796
B	523	LYS	MET	VARIANT	UNP Q27796
B	566	CYS	SER	VARIANT	UNP Q27796
B	586	LEU	VAL	VARIANT	UNP Q27796

- Molecule 2 is MAGNESIUM ION (three-letter code: MG) (formula: Mg).

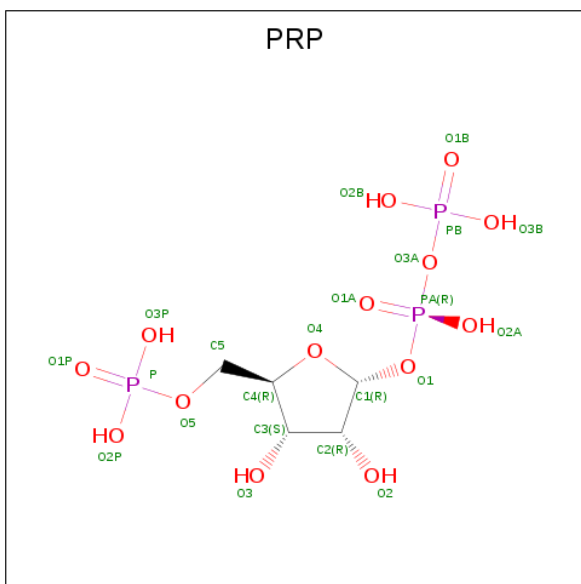
Mol	Chain	Residues	Atoms		ZeroOcc	AltConf
2	B	1	Total	Mg	0	0
			1	1		
2	A	2	Total	Mg	0	0
			2	2		

- Molecule 3 is 7-HYDROXY-PYRAZOLO[4,3-D]PYRIMIDINE (three-letter code: 7HP) (formula: C₅H₄N₄O).



Mol	Chain	Residues	Atoms				ZeroOcc	AltConf
3	A	1	Total	C	N	O	0	0
			10	5	4	1		
3	B	1	Total	C	N	O	0	0
			10	5	4	1		

- Molecule 4 is ALPHA-PHOSPHORIBOSYLPYROPHOSPHORIC ACID (three-letter code: PRP) (formula: $C_5H_{13}O_{14}P_3$).



Mol	Chain	Residues	Atoms				ZeroOcc	AltConf
4	A	1	Total	C	O	P	0	0
			22	5	14	3		

Continued on next page...

Continued from previous page...

Mol	Chain	Residues	Atoms				ZeroOcc	AltConf
4	B	1	Total	C	O	P	0	0
			22	5	14	3		

- Molecule 5 is MANGANESE (II) ION (three-letter code: MN) (formula: Mn).

Mol	Chain	Residues	Atoms		ZeroOcc	AltConf
5	B	1	Total	Mn	0	0
			1	1		

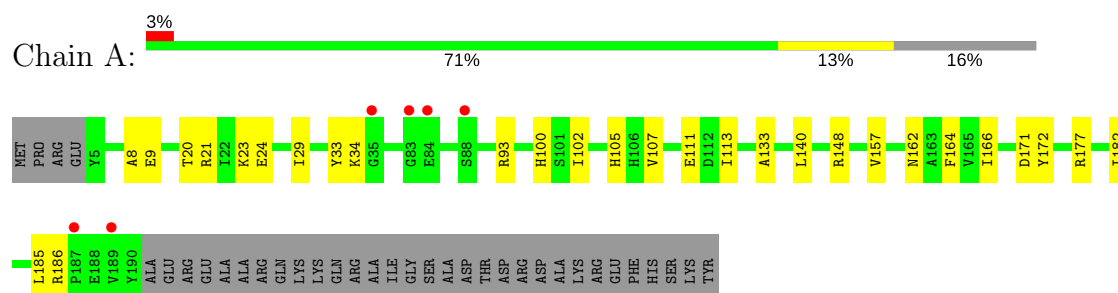
- Molecule 6 is water.

Mol	Chain	Residues	Atoms		ZeroOcc	AltConf
6	A	103	Total	O	0	0
			103	103		
6	B	90	Total	O	0	0
			90	90		

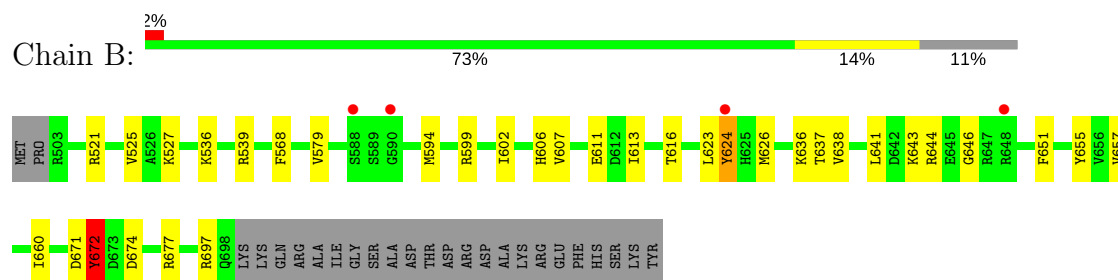
3 Residue-property plots [i](#)

These plots are drawn for all protein, RNA and DNA chains in the entry. The first graphic for a chain summarises the proportions of the various outlier classes displayed in the second graphic. The second graphic shows the sequence view annotated by issues in geometry and electron density. Residues are color-coded according to the number of geometric quality criteria for which they contain at least one outlier: green = 0, yellow = 1, orange = 2 and red = 3 or more. A red dot above a residue indicates a poor fit to the electron density ($RSRZ > 2$). Stretches of 2 or more consecutive residues without any outlier are shown as a green connector. Residues present in the sample, but not in the model, are shown in grey.

• Molecule 1: PROTEIN (HYPOXANTHINE PHOSPHORIBOSYLTRANSFERASE)



• Molecule 1: PROTEIN (HYPOXANTHINE PHOSPHORIBOSYLTRANSFERASE)



4 Data and refinement statistics

Property	Value	Source
Space group	P 1 21 1	Depositor
Cell constants a, b, c, α , β , γ	39.42Å 101.76Å 51.92Å 90.00° 94.23° 90.00°	Depositor
Resolution (Å)	6.00 – 1.81 20.58 – 1.81	Depositor EDS
% Data completeness (in resolution range)	(Not available) (6.00-1.81) 86.7 (20.58-1.81)	Depositor EDS
R_{merge}	(Not available)	Depositor
R_{sym}	0.05	Depositor
$\langle I/\sigma(I) \rangle$ ¹	3.43 (at 1.81Å)	Xtriage
Refinement program	X-PLOR 3.851	Depositor
R, R_{free}	0.183 , 0.232 0.183 , (Not available)	Depositor DCC
R_{free} test set	No test flags present.	wwPDB-VP
Wilson B-factor (Å ²)	19.6	Xtriage
Anisotropy	0.264	Xtriage
Bulk solvent k_{sol} (e/Å ³), B_{sol} (Å ²)	0.38 , 68.5	EDS
L-test for twinning ²	$\langle L \rangle = 0.49$, $\langle L^2 \rangle = 0.32$	Xtriage
Estimated twinning fraction	No twinning to report.	Xtriage
F_o, F_c correlation	0.96	EDS
Total number of atoms	3300	wwPDB-VP
Average B, all atoms (Å ²)	23.0	wwPDB-VP

Xtriage's analysis on translational NCS is as follows: *The largest off-origin peak in the Patterson function is 7.53% of the height of the origin peak. No significant pseudotranslation is detected.*

¹Intensities estimated from amplitudes.

²Theoretical values of $\langle |L| \rangle$, $\langle L^2 \rangle$ for acentric reflections are 0.5, 0.333 respectively for untwinned datasets, and 0.375, 0.2 for perfectly twinned datasets.

5 Model quality

5.1 Standard geometry

Bond lengths and bond angles in the following residue types are not validated in this section: MG, MN, 7HP, PRP

The Z score for a bond length (or angle) is the number of standard deviations the observed value is removed from the expected value. A bond length (or angle) with $|Z| > 5$ is considered an outlier worth inspection. RMSZ is the root-mean-square of all Z scores of the bond lengths (or angles).

Mol	Chain	Bond lengths		Bond angles	
		RMSZ	$\# Z > 5$	RMSZ	$\# Z > 5$
1	A	0.50	0/1495	0.72	0/2031
1	B	0.51	0/1605	0.76	1/2174 (0.0%)
All	All	0.50	0/3100	0.74	1/4205 (0.0%)

Chiral center outliers are detected by calculating the chiral volume of a chiral center and verifying if the center is modelled as a planar moiety or with the opposite hand. A planarity outlier is detected by checking planarity of atoms in a peptide group, atoms in a mainchain group or atoms of a sidechain that are expected to be planar.

Mol	Chain	#Chirality outliers	#Planarity outliers
1	B	0	1

There are no bond length outliers.

All (1) bond angle outliers are listed below:

Mol	Chain	Res	Type	Atoms	Z	Observed($^{\circ}$)	Ideal($^{\circ}$)
1	B	672	TYR	N-CA-C	-5.10	97.22	111.00

There are no chirality outliers.

All (1) planarity outliers are listed below:

Mol	Chain	Res	Type	Group
1	B	672	TYR	Sidechain

5.2 Too-close contacts

In the following table, the Non-H and H(model) columns list the number of non-hydrogen atoms and hydrogen atoms in the chain respectively. The H(added) column lists the number of hydrogen atoms added and optimized by MolProbity. The Clashes column lists the number of clashes within

the asymmetric unit, whereas Symm-Clashes lists symmetry related clashes.

Mol	Chain	Non-H	H(model)	H(added)	Clashes	Symm-Clashes
1	A	1465	0	1456	18	0
1	B	1574	0	1572	17	0
2	A	2	0	0	0	0
2	B	1	0	0	0	0
3	A	10	0	3	0	0
3	B	10	0	3	0	0
4	A	22	0	6	1	0
4	B	22	0	6	0	0
5	B	1	0	0	0	0
6	A	103	0	0	3	0
6	B	90	0	0	1	0
All	All	3300	0	3046	35	0

The all-atom clashscore is defined as the number of clashes found per 1000 atoms (including hydrogen atoms). The all-atom clashscore for this structure is 6.

All (35) close contacts within the same asymmetric unit are listed below, sorted by their clash magnitude.

Atom-1	Atom-2	Interatomic distance (Å)	Clash overlap (Å)
1:B:624:TYR:HE1	1:B:637:THR:OG1	1.75	0.69
1:A:21:ARG:HB3	1:A:157:VAL:HG13	1.81	0.63
1:A:113:ILE:HG23	4:A:801:PRP:H51	1.88	0.55
1:A:9:GLU:HB3	1:A:186:ARG:HG2	1.89	0.54
1:A:164:PHE:HE2	1:A:172:TYR:HB2	1.73	0.54
1:A:171:ASP:HB3	1:A:177:ARG:HG2	1.89	0.53
1:B:599:ARG:HA	1:B:599:ARG:NE	2.24	0.52
1:B:536:LYS:NZ	6:B:1254:HOH:O	2.42	0.52
1:B:579:VAL:HG21	1:B:623:LEU:HD21	1.91	0.52
1:A:100:HIS:HB2	6:A:1106:HOH:O	2.10	0.52
1:A:162:ASN:HB2	6:A:1134:HOH:O	2.09	0.52
1:A:148:ARG:HG2	1:A:148:ARG:HH11	1.75	0.51
1:A:148:ARG:HG2	1:A:148:ARG:NH1	2.26	0.51
1:B:602:ILE:HB	1:B:607:VAL:HG21	1.93	0.50
1:A:93:ARG:NH1	6:A:1217:HOH:O	2.45	0.49
1:A:29:ILE:O	1:A:33:TYR:HD1	1.96	0.49
1:B:616:THR:HA	1:B:646:GLY:O	2.14	0.48
1:B:536:LYS:HD2	1:B:606:HIS:CE1	2.50	0.47
1:A:8:ALA:C	1:A:186:ARG:HG3	2.35	0.47
1:B:525:VAL:HG21	1:B:657:VAL:HG22	1.97	0.46
1:A:102:ILE:HB	1:A:107:VAL:HG21	1.98	0.45

Continued on next page...

Continued from previous page...

Atom-1	Atom-2	Interatomic distance (Å)	Clash overlap (Å)
1:A:105:HIS:O	1:A:133:ALA:N	2.50	0.45
1:A:20:THR:HG22	1:A:24:GLU:OE2	2.16	0.44
1:B:624:TYR:CE1	1:B:651:PHE:HZ	2.35	0.44
1:B:521:ARG:HB3	1:B:657:VAL:HG13	2.00	0.44
1:B:613:ILE:HA	1:B:641:LEU:O	2.18	0.44
1:B:643:LYS:HG2	1:B:660:ILE:HG13	1.98	0.44
1:A:21:ARG:NH1	1:A:157:VAL:O	2.52	0.43
1:A:166:ILE:HD13	1:A:185:LEU:HD13	2.02	0.41
1:B:527:LYS:HD3	1:B:568:PHE:CE2	2.56	0.41
1:B:672:TYR:OH	1:B:697:ARG:NH1	2.54	0.41
1:A:140:LEU:HD21	1:A:182:ILE:HD11	2.03	0.41
1:B:594:MET:CE	1:B:626:MET:SD	3.09	0.41
1:B:638:VAL:HG23	1:B:655:TYR:HB2	2.03	0.40
1:B:671:ASP:HB3	1:B:677:ARG:HG2	2.02	0.40

There are no symmetry-related clashes.

5.3 Torsion angles [i](#)

5.3.1 Protein backbone [i](#)

In the following table, the Percentiles column shows the percent Ramachandran outliers of the chain as a percentile score with respect to all X-ray entries followed by that with respect to entries of similar resolution.

The Analysed column shows the number of residues for which the backbone conformation was analysed, and the total number of residues.

Mol	Chain	Analysed	Favoured	Allowed	Outliers	Percentiles	
1	A	184/221 (83%)	178 (97%)	5 (3%)	1 (0%)	31	16
1	B	194/221 (88%)	190 (98%)	4 (2%)	0	100	100
All	All	378/442 (86%)	368 (97%)	9 (2%)	1 (0%)	43	28

All (1) Ramachandran outliers are listed below:

Mol	Chain	Res	Type
1	A	34	LYS

5.3.2 Protein sidechains ⓘ

In the following table, the Percentiles column shows the percent sidechain outliers of the chain as a percentile score with respect to all X-ray entries followed by that with respect to entries of similar resolution.

The Analysed column shows the number of residues for which the sidechain conformation was analysed, and the total number of residues.

Mol	Chain	Analysed	Rotameric	Outliers	Percentiles	
1	A	157/194 (81%)	155 (99%)	2 (1%)	71	64
1	B	168/194 (87%)	162 (96%)	6 (4%)	38	21
All	All	325/388 (84%)	317 (98%)	8 (2%)	50	36

All (8) residues with a non-rotameric sidechain are listed below:

Mol	Chain	Res	Type
1	A	23	LYS
1	A	111	GLU
1	B	539	ARG
1	B	611	GLU
1	B	624	TYR
1	B	636	LYS
1	B	644	ARG
1	B	674	ASP

Some sidechains can be flipped to improve hydrogen bonding and reduce clashes. All (3) such sidechains are listed below:

Mol	Chain	Res	Type
1	A	121	ASN
1	A	162	ASN
1	B	662	ASN

5.3.3 RNA ⓘ

There are no RNA molecules in this entry.

5.4 Non-standard residues in protein, DNA, RNA chains ⓘ

There are no non-standard protein/DNA/RNA residues in this entry.

5.5 Carbohydrates [i](#)

There are no carbohydrates in this entry.

5.6 Ligand geometry [i](#)

Of 8 ligands modelled in this entry, 4 are monoatomic - leaving 4 for Mogul analysis.

In the following table, the Counts columns list the number of bonds (or angles) for which Mogul statistics could be retrieved, the number of bonds (or angles) that are observed in the model and the number of bonds (or angles) that are defined in the Chemical Component Dictionary. The Link column lists molecule types, if any, to which the group is linked. The Z score for a bond length (or angle) is the number of standard deviations the observed value is removed from the expected value. A bond length (or angle) with $|Z| > 2$ is considered an outlier worth inspection. RMSZ is the root-mean-square of all Z scores of the bond lengths (or angles).

Mol	Type	Chain	Res	Link	Bond lengths			Bond angles		
					Counts	RMSZ	# Z > 2	Counts	RMSZ	# Z > 2
3	7HP	A	800	-	11,11,11	1.97	3 (27%)	5,15,15	4.09	4 (80%)
4	PRP	A	801	2	20,22,22	1.81	4 (20%)	31,35,35	1.37	4 (12%)
3	7HP	B	810	-	11,11,11	1.95	3 (27%)	5,15,15	4.07	4 (80%)
4	PRP	B	811	2,5	20,22,22	1.65	3 (15%)	31,35,35	1.47	3 (9%)

In the following table, the Chirals column lists the number of chiral outliers, the number of chiral centers analysed, the number of these observed in the model and the number defined in the Chemical Component Dictionary. Similar counts are reported in the Torsion and Rings columns. '-' means no outliers of that kind were identified.

Mol	Type	Chain	Res	Link	Chirals	Torsions	Rings
3	7HP	A	800	-	-	0/0/0/0	0/2/2/2
4	PRP	A	801	2	-	0/16/33/33	0/1/1/1
3	7HP	B	810	-	-	0/0/0/0	0/2/2/2
4	PRP	B	811	2,5	-	0/16/33/33	0/1/1/1

All (13) bond length outliers are listed below:

Mol	Chain	Res	Type	Atoms	Z	Observed(Å)	Ideal(Å)
4	A	801	PRP	PB-O3A	-5.43	1.51	1.60
4	B	811	PRP	PB-O3A	-4.95	1.52	1.60
3	B	810	7HP	N8-N7	-4.60	1.29	1.37
3	A	800	7HP	N8-N7	-4.31	1.29	1.37
4	A	801	PRP	PB-O2B	-2.57	1.44	1.54
4	B	811	PRP	PB-O2B	-2.28	1.45	1.54

Continued on next page...

Continued from previous page...

Mol	Chain	Res	Type	Atoms	Z	Observed(Å)	Ideal(Å)
4	B	811	PRP	O4-C1	-2.05	1.38	1.41
3	B	810	7HP	C2-N1	2.29	1.38	1.33
4	A	801	PRP	O2-C2	2.31	1.48	1.43
3	A	800	7HP	C2-N1	2.41	1.38	1.33
3	B	810	7HP	C6-N1	2.68	1.43	1.36
4	A	801	PRP	P-O5	2.82	1.69	1.60
3	A	800	7HP	C2-N3	3.08	1.37	1.32

All (15) bond angle outliers are listed below:

Mol	Chain	Res	Type	Atoms	Z	Observed(°)	Ideal(°)
3	B	810	7HP	N3-C2-N1	-6.61	123.20	128.86
3	A	800	7HP	N3-C2-N1	-6.04	123.69	128.86
3	A	800	7HP	C2-N3-C4	-4.76	110.46	115.24
4	B	811	PRP	O3P-P-O5	-3.86	96.47	106.73
3	B	810	7HP	C2-N3-C4	-3.72	111.50	115.24
4	B	811	PRP	C5-C4-C3	-2.66	105.27	115.29
4	A	801	PRP	C1-C2-C3	-2.07	99.67	102.30
4	A	801	PRP	O5-C5-C4	2.18	116.58	109.00
3	A	800	7HP	C2-N1-C6	2.35	125.23	117.04
4	A	801	PRP	O4-C1-C2	2.95	108.78	104.98
3	B	810	7HP	C2-N1-C6	3.03	127.61	117.04
4	A	801	PRP	P-O5-C5	3.03	126.64	118.30
4	B	811	PRP	O1-C1-C2	3.92	113.58	106.76
3	B	810	7HP	O6-C6-C5	4.02	127.37	119.66
3	A	800	7HP	O6-C6-C5	4.28	127.86	119.66

There are no chirality outliers.

There are no torsion outliers.

There are no ring outliers.

1 monomer is involved in 1 short contact:

Mol	Chain	Res	Type	Clashes	Symm-Clashes
4	A	801	PRP	1	0

5.7 Other polymers

There are no such residues in this entry.

5.8 Polymer linkage issues ⓘ

There are no chain breaks in this entry.

6 Fit of model and data [i](#)

6.1 Protein, DNA and RNA chains [i](#)

In the following table, the column labelled ‘#RSRZ > 2’ contains the number (and percentage) of RSRZ outliers, followed by percent RSRZ outliers for the chain as percentile scores relative to all X-ray entries and entries of similar resolution. The OWAB column contains the minimum, median, 95th percentile and maximum values of the occupancy-weighted average B-factor per residue. The column labelled ‘Q < 0.9’ lists the number of (and percentage) of residues with an average occupancy less than 0.9.

Mol	Chain	Analysed	<RSRZ>	#RSRZ > 2		OWAB(Å ²)	Q < 0.9
1	A	186/221 (84%)	-0.10	6 (3%)	47 42	11, 20, 42, 61	0
1	B	196/221 (88%)	-0.20	4 (2%)	65 61	9, 20, 40, 59	0
All	All	382/442 (86%)	-0.15	10 (2%)	56 51	9, 20, 41, 61	0

All (10) RSRZ outliers are listed below:

Mol	Chain	Res	Type	RSRZ
1	A	88	SER	4.5
1	A	35	GLY	4.1
1	A	189	VAL	3.5
1	A	187	PRO	3.3
1	A	84	GLU	2.9
1	A	83	GLY	2.6
1	B	590	GLY	2.5
1	B	648	ARG	2.4
1	B	624	TYR	2.2
1	B	588	SER	2.1

6.2 Non-standard residues in protein, DNA, RNA chains [i](#)

There are no non-standard protein/DNA/RNA residues in this entry.

6.3 Carbohydrates [i](#)

There are no carbohydrates in this entry.

6.4 Ligands [i](#)

In the following table, the Atoms column lists the number of modelled atoms in the group and the number defined in the chemical component dictionary. The B-factors column lists the minimum, median, 95th percentile and maximum values of B factors of atoms in the group. The column labelled 'Q< 0.9' lists the number of atoms with occupancy less than 0.9.

Mol	Type	Chain	Res	Atoms	RSCC	RSR	B-factors(Å ²)	Q<0.9
2	MG	A	900	1/1	0.95	0.07	20,20,20,20	0
3	7HP	A	800	10/10	0.96	0.08	20,25,27,27	0
2	MG	A	902	1/1	0.96	0.05	19,19,19,19	0
3	7HP	B	810	10/10	0.96	0.08	16,19,21,21	0
2	MG	B	912	1/1	0.97	0.10	15,15,15,15	0
4	PRP	A	801	22/22	0.98	0.07	15,25,33,36	0
4	PRP	B	811	22/22	0.98	0.06	12,15,17,18	0
5	MN	B	910	1/1	0.99	0.06	17,17,17,17	0

6.5 Other polymers [i](#)

There are no such residues in this entry.