



# Full wwPDB X-ray Structure Validation Report ⓘ

May 8, 2018 – 03:52 PM EDT

PDB ID : 5TQ0  
Title : Crystal structure of amino terminal domains of the NMDA receptor subunit GluN1 and GluN2A in the presence of EDTA  
Authors : Romero-Hernandez, A.; Simorowski, N.; Karakas, E.; Furukawa, H.  
Deposited on : 2016-10-21  
Resolution : 2.70 Å(reported)

This is a Full wwPDB X-ray Structure Validation Report for a publicly released PDB entry.

We welcome your comments at [validation@mail.wwpdb.org](mailto:validation@mail.wwpdb.org)

A user guide is available at

<https://www.wwpdb.org/validation/2017/XrayValidationReportHelp>

with specific help available everywhere you see the ⓘ symbol.

---

The following versions of software and data (see [references ⓘ](#)) were used in the production of this report:

MolProbity : 4.02b-467  
Mogul : 1.7.3 (157068), CSD as539be (2018)  
Xtriage (Phenix) : 1.13  
EDS : rb-20031172  
Percentile statistics : 20171227.v01 (using entries in the PDB archive December 27th 2017)  
Refmac : 5.8.0158  
CCP4 : 7.0 (Gargrove)  
Ideal geometry (proteins) : Engh & Huber (2001)  
Ideal geometry (DNA, RNA) : Parkinson et al. (1996)  
Validation Pipeline (wwPDB-VP) : rb-20031172

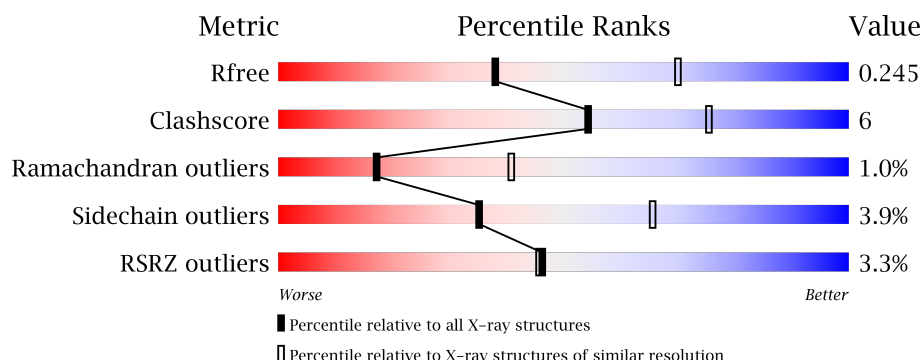
# 1 Overall quality at a glance

The following experimental techniques were used to determine the structure:

*X-RAY DIFFRACTION*

The reported resolution of this entry is 2.70 Å.

Percentile scores (ranging between 0-100) for global validation metrics of the entry are shown in the following graphic. The table shows the number of entries on which the scores are based.



Metric	Whole archive (#Entries)	Similar resolution (#Entries, resolution range(Å))
$R_{free}$	111664	2449 (2.70-2.70)
Clashscore	122126	2756 (2.70-2.70)
Ramachandran outliers	120053	2716 (2.70-2.70)
Sidechain outliers	120020	2716 (2.70-2.70)
RSRZ outliers	108989	2376 (2.70-2.70)

The table below summarises the geometric issues observed across the polymeric chains and their fit to the electron density. The red, orange, yellow and green segments on the lower bar indicate the fraction of residues that contain outliers for  $\geq 3$ , 2, 1 and 0 types of geometric quality criteria. A grey segment represents the fraction of residues that are not modelled. The numeric value for each fraction is indicated below the corresponding segment, with a dot representing fractions  $\leq 5\%$ . The upper red bar (where present) indicates the fraction of residues that have poor fit to the electron density. The numeric value is given above the bar.

Mol	Chain	Length	Quality of chain
1	A	391	<div> <div>0.5%</div> <div>79%</div> <div>12%</div> <div>7%</div> </div>
2	B	360	<div> <div>5%</div> <div>78%</div> <div>14%</div> <div>6%</div> </div>
3	H	221	<div> <div>0.5%</div> <div>83%</div> <div>12%</div> <div>0.5%</div> </div>
4	L	214	<div> <div>6%</div> <div>80%</div> <div>14%</div> <div>5%</div> </div>

## 2 Entry composition

There are 9 unique types of molecules in this entry. The entry contains 8351 atoms, of which 0 are hydrogens and 0 are deuteriums.

In the tables below, the ZeroOcc column contains the number of atoms modelled with zero occupancy, the AltConf column contains the number of residues with at least one atom in alternate conformation and the Trace column contains the number of residues modelled with at most 2 atoms.

- Molecule 1 is a protein called NMDA glutamate receptor subunit.

Mol	Chain	Residues	Atoms					ZeroOcc	AltConf	Trace
1	A	364	Total	C	N	O	S	0	0	0
			2729	1743	467	508	11			

There are 8 discrepancies between the modelled and reference sequences:

Chain	Residue	Modelled	Actual	Comment	Reference
A	61	GLN	ASN	engineered mutation	UNP Q91977
A	371	GLN	ASN	engineered mutation	UNP Q91977
A	409	GLY	-	expression tag	UNP Q91977
A	410	THR	-	expression tag	UNP Q91977
A	411	LEU	-	expression tag	UNP Q91977
A	412	VAL	-	expression tag	UNP Q91977
A	413	PRO	-	expression tag	UNP Q91977
A	414	ARG	-	expression tag	UNP Q91977

- Molecule 2 is a protein called Glutamate receptor ionotropic, NMDA 2A.

Mol	Chain	Residues	Atoms					ZeroOcc	AltConf	Trace
2	B	338	Total	C	N	O	S	0	0	0
			2449	1570	407	460	12			

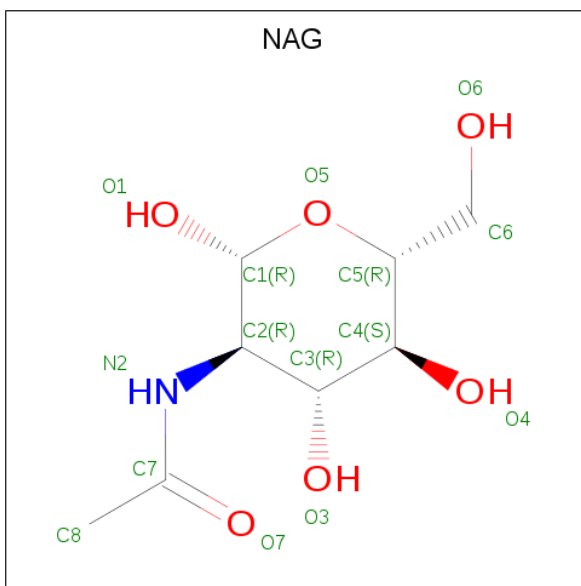
- Molecule 3 is a protein called FAB, HEAVY CHAIN.

Mol	Chain	Residues	Atoms					ZeroOcc	AltConf	Trace
3	H	212	Total	C	N	O	S	0	0	0
			1534	989	243	295	7			

- Molecule 4 is a protein called FAB, LIGHT CHAIN.

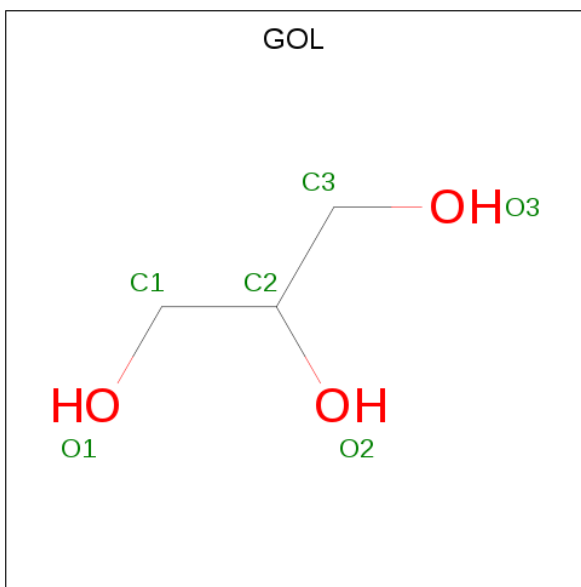
Mol	Chain	Residues	Atoms					ZeroOcc	AltConf	Trace
4	L	204	Total	C	N	O	S	0	0	0
			1485	933	252	293	7			

- Molecule 5 is N-ACETYL-D-GLUCOSAMINE (three-letter code: NAG) (formula:  $C_8H_{15}NO_6$ ).



Mol	Chain	Residues	Atoms				ZeroOcc	AltConf
5	A	1	Total	C	N	O	0	0
			14	8	1	5		
5	A	1	Total	C	N	O	0	0
			14	8	1	5		

- Molecule 6 is GLYCEROL (three-letter code: GOL) (formula:  $C_3H_8O_3$ ).



Mol	Chain	Residues	Atoms			ZeroOcc	AltConf
6	A	1	Total	C	O	0	0
			6	3	3		

*Continued on next page...*

*Continued from previous page...*

Mol	Chain	Residues	Atoms			ZeroOcc	AltConf
6	A	1	Total	C	O	0	0
			6	3	3		

- Molecule 7 is SULFATE ION (three-letter code: SO4) (formula: O<sub>4</sub>S).



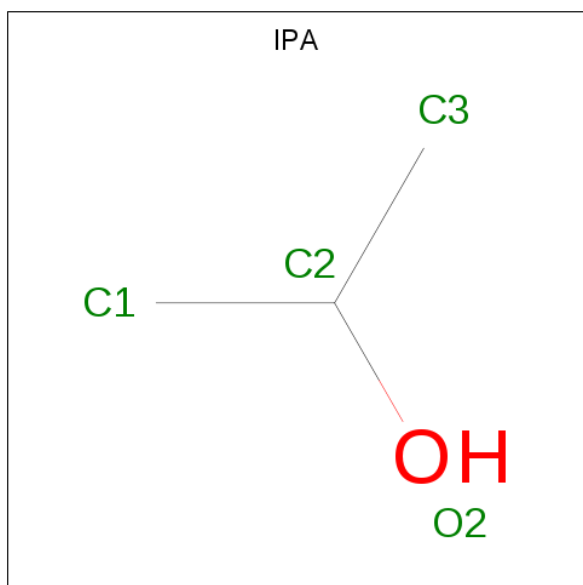
Mol	Chain	Residues	Atoms			ZeroOcc	AltConf
7	A	1	Total	O	S	0	0
			5	4	1		
7	A	1	Total	O	S	0	0
			5	4	1		
7	A	1	Total	O	S	0	0
			5	4	1		
7	A	1	Total	O	S	0	0
			5	4	1		
7	A	1	Total	O	S	0	0
			5	4	1		
7	B	1	Total	O	S	0	0
			5	4	1		
7	B	1	Total	O	S	0	0
			5	4	1		
7	B	1	Total	O	S	0	0
			5	4	1		
7	B	1	Total	O	S	0	0
			5	4	1		

*Continued on next page...*

Continued from previous page...

Mol	Chain	Residues	Atoms			ZeroOcc	AltConf
7	L	1	Total	O	S	0	0
			5	4	1		
7	L	1	Total	O	S	0	0
			5	4	1		

- Molecule 8 is ISOPROPYL ALCOHOL (three-letter code: IPA) (formula: C<sub>3</sub>H<sub>8</sub>O).



Mol	Chain	Residues	Atoms			ZeroOcc	AltConf
8	H	1	Total	C	O	0	0
			4	3	1		

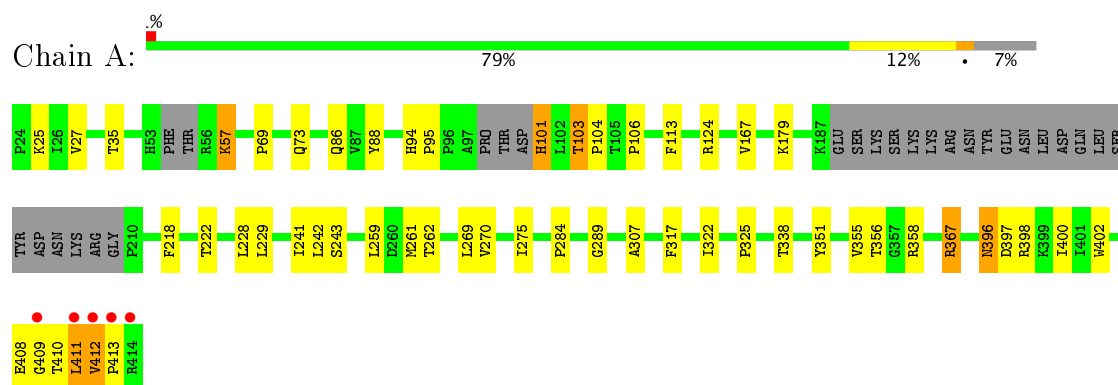
- Molecule 9 is water.

Mol	Chain	Residues	Atoms		ZeroOcc	AltConf
9	A	27	Total	O	0	0
			27	27		
9	B	12	Total	O	0	0
			12	12		
9	H	8	Total	O	0	0
			8	8		
9	L	3	Total	O	0	0
			3	3		

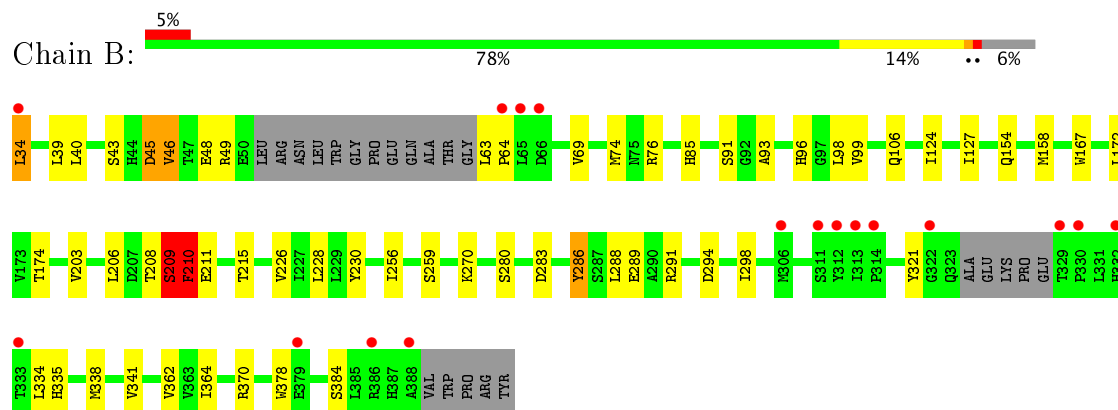
### 3 Residue-property plots [i](#)

These plots are drawn for all protein, RNA and DNA chains in the entry. The first graphic for a chain summarises the proportions of the various outlier classes displayed in the second graphic. The second graphic shows the sequence view annotated by issues in geometry and electron density. Residues are color-coded according to the number of geometric quality criteria for which they contain at least one outlier: green = 0, yellow = 1, orange = 2 and red = 3 or more. A red dot above a residue indicates a poor fit to the electron density ( $RSRZ > 2$ ). Stretches of 2 or more consecutive residues without any outlier are shown as a green connector. Residues present in the sample, but not in the model, are shown in grey.

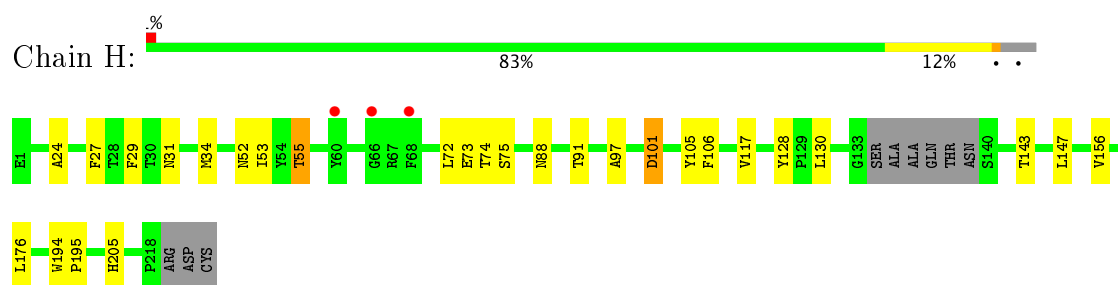
- Molecule 1: NMDA glutamate receptor subunit



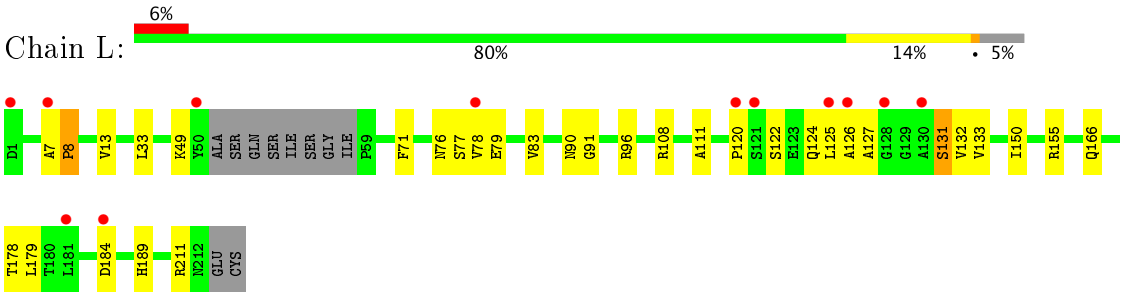
- Molecule 2: Glutamate receptor ionotropic, NMDA 2A



- Molecule 3: FAB, HEAVY CHAIN



- Molecule 4: FAB, LIGHT CHAIN





## 4 Data and refinement statistics

Property	Value	Source
Space group	P 21 21 21	Depositor
Cell constants a, b, c, $\alpha$ , $\beta$ , $\gamma$	79.98Å 118.35Å 156.20Å 90.00° 90.00° 90.00°	Depositor
Resolution (Å)	47.57 – 2.70 47.57 – 2.70	Depositor EDS
% Data completeness (in resolution range)	99.1 (47.57-2.70) 93.5 (47.57-2.70)	Depositor EDS
$R_{merge}$	0.13	Depositor
$R_{sym}$	(Not available)	Depositor
$\langle I/\sigma(I) \rangle$ <sup>1</sup>	1.18 (at 2.69Å)	Xtriage
Refinement program	PHENIX 1.10 _2155	Depositor
R, $R_{free}$	0.208 , 0.246 0.208 , 0.245	Depositor DCC
$R_{free}$ test set	4093 reflections (9.99%)	wwPDB-VP
Wilson B-factor (Å <sup>2</sup> )	62.6	Xtriage
Anisotropy	0.116	Xtriage
Bulk solvent $k_{sol}$ (e/Å <sup>3</sup> ), $B_{sol}$ (Å <sup>2</sup> )	0.33 , 56.8	EDS
L-test for twinning <sup>2</sup>	$\langle  L  \rangle = 0.46$ , $\langle L^2 \rangle = 0.29$	Xtriage
Estimated twinning fraction	No twinning to report.	Xtriage
$F_o, F_c$ correlation	0.93	EDS
Total number of atoms	8351	wwPDB-VP
Average B, all atoms (Å <sup>2</sup> )	66.0	wwPDB-VP

Xtriage's analysis on translational NCS is as follows: *The largest off-origin peak in the Patterson function is 3.84% of the height of the origin peak. No significant pseudotranslation is detected.*

<sup>1</sup>Intensities estimated from amplitudes.

<sup>2</sup>Theoretical values of  $\langle |L| \rangle$ ,  $\langle L^2 \rangle$  for acentric reflections are 0.5, 0.333 respectively for untwinned datasets, and 0.375, 0.2 for perfectly twinned datasets.

## 5 Model quality [i](#)

### 5.1 Standard geometry [i](#)

Bond lengths and bond angles in the following residue types are not validated in this section: GOL, IPA, NAG, SO4

The Z score for a bond length (or angle) is the number of standard deviations the observed value is removed from the expected value. A bond length (or angle) with  $|Z| > 5$  is considered an outlier worth inspection. RMSZ is the root-mean-square of all Z scores of the bond lengths (or angles).

Mol	Chain	Bond lengths		Bond angles	
		RMSZ	$\# Z  > 5$	RMSZ	$\# Z  > 5$
1	A	0.27	0/2783	0.45	0/3790
2	B	0.28	0/2500	0.48	0/3415
3	H	0.28	0/1582	0.51	0/2179
4	L	0.28	0/1521	0.50	0/2077
All	All	0.28	0/8386	0.48	0/11461

Chiral center outliers are detected by calculating the chiral volume of a chiral center and verifying if the center is modelled as a planar moiety or with the opposite hand. A planarity outlier is detected by checking planarity of atoms in a peptide group, atoms in a mainchain group or atoms of a sidechain that are expected to be planar.

Mol	Chain	#Chirality outliers	#Planarity outliers
2	B	0	2
3	H	0	1
All	All	0	3

There are no bond length outliers.

There are no bond angle outliers.

There are no chirality outliers.

All (3) planarity outliers are listed below:

Mol	Chain	Res	Type	Group
2	B	45	ASP	Peptide
2	B	48	GLU	Peptide
3	H	101	ASP	Peptide

## 5.2 Too-close contacts ⓘ

In the following table, the Non-H and H(model) columns list the number of non-hydrogen atoms and hydrogen atoms in the chain respectively. The H(added) column lists the number of hydrogen atoms added and optimized by MolProbity. The Clashes column lists the number of clashes within the asymmetric unit, whereas Symm-Clashes lists symmetry related clashes.

Mol	Chain	Non-H	H(model)	H(added)	Clashes	Symm-Clashes
1	A	2729	0	2652	30	0
2	B	2449	0	2250	33	0
3	H	1534	0	1366	13	0
4	L	1485	0	1310	18	0
5	A	28	0	26	0	0
6	A	12	0	16	2	0
7	A	25	0	0	1	0
7	B	25	0	0	0	0
7	L	10	0	0	0	0
8	H	4	0	8	0	0
9	A	27	0	0	0	0
9	B	12	0	0	0	0
9	H	8	0	0	0	0
9	L	3	0	0	0	0
All	All	8351	0	7628	90	0

The all-atom clashscore is defined as the number of clashes found per 1000 atoms (including hydrogen atoms). The all-atom clashscore for this structure is 6.

All (90) close contacts within the same asymmetric unit are listed below, sorted by their clash magnitude.

Atom-1	Atom-2	Interatomic distance (Å)	Clash overlap (Å)
3:H:72:LEU:HD13	3:H:74:THR:HG23	1.60	0.83
3:H:91:THR:HG22	3:H:117:VAL:H	1.44	0.80
2:B:206:LEU:HD23	2:B:215:THR:HG22	1.65	0.78
4:L:125:LEU:C	4:L:127:ALA:H	1.91	0.72
2:B:209:SER:O	2:B:211:GLU:N	2.24	0.70
3:H:130:LEU:HD21	3:H:147:LEU:HB2	1.74	0.68
1:A:229:LEU:HB3	1:A:261:MET:HE1	1.77	0.66
3:H:97:ALA:HB1	3:H:106:PHE:HB3	1.80	0.63
3:H:34:MET:HG2	3:H:53:ILE:HD11	1.81	0.62
4:L:150:ILE:HD11	4:L:179:LEU:HD21	1.82	0.62
2:B:40:LEU:HD13	2:B:288:LEU:HD23	1.83	0.61
1:A:167:VAL:HG12	1:A:243:SER:HB3	1.84	0.60
4:L:189:HIS:O	4:L:211:ARG:HD3	2.02	0.59

*Continued on next page...*

*Continued from previous page...*

Atom-1	Atom-2	Interatomic distance (Å)	Clash overlap (Å)
2:B:259:SER:HB3	2:B:280:SER:HA	1.84	0.59
2:B:127:ILE:HG23	2:B:291:ARG:HB3	1.84	0.59
1:A:94:HIS:ND1	1:A:95:PRO:O	2.31	0.57
1:A:242:LEU:HB3	1:A:270:VAL:HG12	1.88	0.56
1:A:262:THR:HB	1:A:284:PRO:HB3	1.86	0.56
2:B:298:ILE:HG23	2:B:341:VAL:HG11	1.88	0.56
1:A:356:THR:O	1:A:367:ARG:NH2	2.40	0.55
4:L:125:LEU:C	4:L:127:ALA:N	2.60	0.55
1:A:400:ILE:N	1:A:408:GLU:O	2.40	0.55
1:A:218:PHE:HB3	1:A:228:LEU:HD13	1.88	0.54
2:B:174:THR:HG22	2:B:230:TYR:HB3	1.90	0.53
4:L:7:ALA:HB3	4:L:8:PRO:HD3	1.91	0.53
1:A:322:ILE:HA	1:A:338:THR:HG21	1.91	0.53
2:B:74:MET:HG3	2:B:76:ARG:H	1.75	0.51
2:B:378:TRP:HD1	2:B:384:SER:HB2	1.76	0.51
1:A:27:VAL:HG13	1:A:88:TYR:CD1	2.46	0.51
1:A:101:HIS:CE1	1:A:124:ARG:H	2.29	0.50
1:A:35:THR:HB	6:A:503:GOL:H12	1.93	0.50
4:L:108:ARG:HH21	4:L:111:ALA:HB2	1.77	0.50
1:A:73:GLN:NE2	3:H:31:ASN:OD1	2.44	0.50
2:B:99:VAL:HG13	2:B:127:ILE:HG13	1.93	0.50
2:B:228:LEU:HD23	2:B:256:ILE:HB	1.93	0.50
2:B:286:TYR:OH	2:B:294:ASP:OD2	2.24	0.49
2:B:49:ARG:HA	2:B:69:VAL:HG21	1.94	0.49
2:B:63:LEU:CB	2:B:64:PRO:HD3	2.42	0.49
1:A:409:GLY:C	1:A:411:LEU:H	2.16	0.49
4:L:83:VAL:HG11	4:L:166:GLN:HB3	1.94	0.49
2:B:209:SER:O	2:B:210:PHE:C	2.52	0.48
4:L:124:GLN:HE22	4:L:131:SER:HB2	1.77	0.48
1:A:103:THR:O	1:A:106:PRO:HD2	2.13	0.48
1:A:402:TRP:HE1	1:A:408:GLU:HB2	1.79	0.48
1:A:103:THR:N	1:A:104:PRO:HD2	2.29	0.47
2:B:172:LEU:HB3	2:B:203:VAL:HG13	1.97	0.47
2:B:172:LEU:HD12	2:B:228:LEU:HB2	1.95	0.47
2:B:270:LYS:HA	2:B:370:ARG:HH21	1.80	0.47
3:H:128:TYR:CE2	4:L:124:GLN:HG3	2.49	0.47
4:L:76:ASN:OD1	4:L:77:SER:N	2.46	0.47
2:B:45:ASP:O	2:B:46:VAL:HG12	2.14	0.47
3:H:105:TYR:CZ	4:L:49:LYS:HD3	2.49	0.47
1:A:57:LYS:HD2	1:A:57:LYS:HA	1.55	0.46
4:L:133:VAL:HG13	4:L:178:THR:HG22	1.98	0.46

*Continued on next page...*

*Continued from previous page...*

Atom-1	Atom-2	Interatomic distance (Å)	Clash overlap (Å)
1:A:222:THR:HG23	7:A:508:SO4:O4	2.16	0.46
1:A:179:LYS:NZ	6:A:504:GOL:H32	2.31	0.45
1:A:86:GLN:HB3	1:A:325:PRO:HG2	1.98	0.45
4:L:125:LEU:O	4:L:127:ALA:N	2.50	0.45
1:A:307:ALA:HB1	1:A:351:TYR:CZ	2.52	0.45
2:B:74:MET:HG2	2:B:85:HIS:NE2	2.32	0.45
2:B:283:ASP:HB3	2:B:286:TYR:HB2	1.99	0.45
1:A:358:ARG:O	1:A:367:ARG:NH2	2.40	0.45
3:H:52:ASN:HB3	3:H:55:THR:O	2.16	0.45
4:L:33:LEU:HG	4:L:71:PHE:CD1	2.52	0.44
1:A:241:ILE:HA	1:A:269:LEU:O	2.18	0.44
4:L:91:GLY:HA2	4:L:96:ARG:HD3	1.98	0.44
3:H:73:GLU:O	3:H:74:THR:OG1	2.34	0.44
1:A:411:LEU:HA	1:A:411:LEU:HD22	1.60	0.43
2:B:209:SER:HB3	2:B:210:PHE:H	1.67	0.43
2:B:209:SER:C	2:B:211:GLU:N	2.72	0.43
4:L:13:VAL:HG11	4:L:78:VAL:HG21	1.99	0.43
1:A:259:LEU:HD12	1:A:261:MET:HE1	2.01	0.42
2:B:362:VAL:HG12	2:B:364:ILE:HG23	2.02	0.42
2:B:39:LEU:O	2:B:40:LEU:HD23	2.19	0.42
1:A:275:ILE:HD13	1:A:289:GLY:HA3	2.01	0.42
2:B:34:LEU:HB3	2:B:96:HIS:CE1	2.55	0.42
3:H:156:VAL:HG23	3:H:205:HIS:HD2	1.85	0.42
1:A:25:LYS:HB2	1:A:25:LYS:HE3	1.82	0.41
3:H:194:TRP:CG	3:H:195:PRO:HA	2.55	0.41
2:B:167:TRP:HB3	2:B:226:VAL:HG21	2.02	0.41
1:A:113:PHE:CZ	2:B:106:GLN:HG2	2.55	0.41
2:B:208:THR:C	2:B:209:SER:O	2.59	0.41
4:L:120:PRO:HD3	4:L:132:VAL:HG22	2.03	0.41
2:B:334:LEU:O	2:B:338:MET:HG2	2.21	0.41
4:L:124:GLN:NE2	4:L:131:SER:HB2	2.36	0.41
2:B:154:GLN:O	2:B:158:MET:HG3	2.21	0.41
1:A:25:LYS:HD3	1:A:317:PHE:HE2	1.86	0.40
2:B:370:ARG:HD2	2:B:370:ARG:HA	1.94	0.40
2:B:98:LEU:HB3	2:B:124:ILE:HG12	2.02	0.40
3:H:24:ALA:HB1	3:H:27:PHE:CZ	2.56	0.40

There are no symmetry-related clashes.

## 5.3 Torsion angles [i](#)

### 5.3.1 Protein backbone [i](#)

In the following table, the Percentiles column shows the percent Ramachandran outliers of the chain as a percentile score with respect to all X-ray entries followed by that with respect to entries of similar resolution.

The Analysed column shows the number of residues for which the backbone conformation was analysed, and the total number of residues.

Mol	Chain	Analysed	Favoured	Allowed	Outliers	Percentiles	
1	A	356/391 (91%)	335 (94%)	17 (5%)	4 (1%)	16	38
2	B	332/360 (92%)	316 (95%)	11 (3%)	5 (2%)	11	29
3	H	208/221 (94%)	196 (94%)	12 (6%)	0	100	100
4	L	200/214 (94%)	191 (96%)	7 (4%)	2 (1%)	17	41
All	All	1096/1186 (92%)	1038 (95%)	47 (4%)	11 (1%)	17	41

All (11) Ramachandran outliers are listed below:

Mol	Chain	Res	Type
1	A	412	VAL
1	A	413	PRO
2	B	46	VAL
2	B	209	SER
2	B	210	PHE
2	B	43	SER
2	B	93	ALA
4	L	8	PRO
4	L	126	ALA
1	A	396	ASN
1	A	69	PRO

### 5.3.2 Protein sidechains [i](#)

In the following table, the Percentiles column shows the percent sidechain outliers of the chain as a percentile score with respect to all X-ray entries followed by that with respect to entries of similar resolution.

The Analysed column shows the number of residues for which the sidechain conformation was analysed, and the total number of residues.

Mol	Chain	Analysed	Rotameric	Outliers	Percentiles	
1	A	280/336 (83%)	269 (96%)	11 (4%)	35	65
2	B	239/318 (75%)	231 (97%)	8 (3%)	41	71
3	H	149/188 (79%)	142 (95%)	7 (5%)	29	58
4	L	146/188 (78%)	140 (96%)	6 (4%)	33	63
All	All	814/1030 (79%)	782 (96%)	32 (4%)	35	65

All (32) residues with a non-rotameric sidechain are listed below:

Mol	Chain	Res	Type
1	A	57	LYS
1	A	101	HIS
1	A	103	THR
1	A	355	VAL
1	A	367	ARG
1	A	396	ASN
1	A	397	ASP
1	A	398	ARG
1	A	410	THR
1	A	411	LEU
1	A	412	VAL
2	B	34	LEU
2	B	91	SER
2	B	209	SER
2	B	210	PHE
2	B	286	TYR
2	B	289	GLU
2	B	321	TYR
2	B	335	HIS
3	H	29	PHE
3	H	55	THR
3	H	75	SER
3	H	88	ASN
3	H	101	ASP
3	H	143	THR
3	H	176	LEU
4	L	79	GLU
4	L	90	ASN
4	L	122	SER
4	L	131	SER
4	L	155	ARG
4	L	184	ASP

Some sidechains can be flipped to improve hydrogen bonding and reduce clashes. There are no such sidechains identified.

### 5.3.3 RNA [i](#)

There are no RNA molecules in this entry.

## 5.4 Non-standard residues in protein, DNA, RNA chains [i](#)

There are no non-standard protein/DNA/RNA residues in this entry.

## 5.5 Carbohydrates [i](#)

There are no carbohydrates in this entry.

## 5.6 Ligand geometry [i](#)

17 ligands are modelled in this entry.

In the following table, the Counts columns list the number of bonds (or angles) for which Mogul statistics could be retrieved, the number of bonds (or angles) that are observed in the model and the number of bonds (or angles) that are defined in the Chemical Component Dictionary. The Link column lists molecule types, if any, to which the group is linked. The Z score for a bond length (or angle) is the number of standard deviations the observed value is removed from the expected value. A bond length (or angle) with  $|Z| > 2$  is considered an outlier worth inspection. RMSZ is the root-mean-square of all Z scores of the bond lengths (or angles).

Mol	Type	Chain	Res	Link	Bond lengths			Bond angles		
					Counts	RMSZ	$\# Z  > 2$	Counts	RMSZ	$\# Z  > 2$
5	NAG	A	501	1	14,14,15	0.25	0	17,19,21	0.48	0
5	NAG	A	502	1	14,14,15	0.21	0	17,19,21	0.47	0
6	GOL	A	503	-	5,5,5	0.35	0	5,5,5	0.32	0
6	GOL	A	504	-	5,5,5	0.36	0	5,5,5	0.26	0
7	SO4	A	505	-	4,4,4	0.15	0	6,6,6	0.09	0
7	SO4	A	506	-	4,4,4	0.17	0	6,6,6	0.12	0
7	SO4	A	507	-	4,4,4	0.16	0	6,6,6	0.09	0
7	SO4	A	508	-	4,4,4	0.18	0	6,6,6	0.10	0
7	SO4	A	509	-	4,4,4	0.14	0	6,6,6	0.23	0
7	SO4	B	401	-	4,4,4	0.15	0	6,6,6	0.16	0
7	SO4	B	402	-	4,4,4	0.17	0	6,6,6	0.10	0
7	SO4	B	403	-	4,4,4	0.16	0	6,6,6	0.08	0
7	SO4	B	404	-	4,4,4	0.17	0	6,6,6	0.08	0
7	SO4	B	405	-	4,4,4	0.17	0	6,6,6	0.08	0



Mol	Type	Chain	Res	Link	Bond lengths			Bond angles		
					Counts	RMSZ	# Z  > 2	Counts	RMSZ	# Z  > 2
8	IPA	H	301	-	3,3,3	0.55	0	3,3,3	0.29	0
7	SO4	L	301	-	4,4,4	0.17	0	6,6,6	0.07	0
7	SO4	L	302	4	4,4,4	0.17	0	6,6,6	0.12	0

In the following table, the Chirals column lists the number of chiral outliers, the number of chiral centers analysed, the number of these observed in the model and the number defined in the Chemical Component Dictionary. Similar counts are reported in the Torsion and Rings columns. '-' means no outliers of that kind were identified.

Mol	Type	Chain	Res	Link	Chirals	Torsions	Rings
5	NAG	A	501	1	-	0/6/23/26	0/1/1/1
5	NAG	A	502	1	-	0/6/23/26	0/1/1/1
6	GOL	A	503	-	-	0/4/4/4	0/0/0/0
6	GOL	A	504	-	-	0/4/4/4	0/0/0/0
7	SO4	A	505	-	-	0/0/0/0	0/0/0/0
7	SO4	A	506	-	-	0/0/0/0	0/0/0/0
7	SO4	A	507	-	-	0/0/0/0	0/0/0/0
7	SO4	A	508	-	-	0/0/0/0	0/0/0/0
7	SO4	A	509	-	-	0/0/0/0	0/0/0/0
7	SO4	B	401	-	-	0/0/0/0	0/0/0/0
7	SO4	B	402	-	-	0/0/0/0	0/0/0/0
7	SO4	B	403	-	-	0/0/0/0	0/0/0/0
7	SO4	B	404	-	-	0/0/0/0	0/0/0/0
7	SO4	B	405	-	-	0/0/0/0	0/0/0/0
8	IPA	H	301	-	-	0/0/0/0	0/0/0/0
7	SO4	L	301	-	-	0/0/0/0	0/0/0/0
7	SO4	L	302	4	-	0/0/0/0	0/0/0/0

There are no bond length outliers.

There are no bond angle outliers.

There are no chirality outliers.

There are no torsion outliers.

There are no ring outliers.

3 monomers are involved in 3 short contacts:

Mol	Chain	Res	Type	Clashes	Symm-Clashes
6	A	503	GOL	1	0
6	A	504	GOL	1	0
7	A	508	SO4	1	0

## 5.7 Other polymers

There are no such residues in this entry.

## 5.8 Polymer linkage issues

There are no chain breaks in this entry.

## 6 Fit of model and data ⓘ

### 6.1 Protein, DNA and RNA chains ⓘ

In the following table, the column labelled ‘#RSRZ> 2’ contains the number (and percentage) of RSRZ outliers, followed by percent RSRZ outliers for the chain as percentile scores relative to all X-ray entries and entries of similar resolution. The OWAB column contains the minimum, median, 95<sup>th</sup> percentile and maximum values of the occupancy-weighted average B-factor per residue. The column labelled ‘Q< 0.9’ lists the number of (and percentage) of residues with an average occupancy less than 0.9.

Mol	Chain	Analysed	<RSRZ>	#RSRZ>2	OWAB(Å <sup>2</sup> )	Q<0.9
1	A	364/391 (93%)	-0.00	5 (1%) 75 76	34, 54, 88, 114	0
2	B	338/360 (93%)	0.25	17 (5%) 29 27	47, 72, 109, 123	0
3	H	212/221 (95%)	-0.04	3 (1%) 75 76	47, 65, 87, 99	0
4	L	204/214 (95%)	0.19	12 (5%) 22 21	47, 70, 97, 109	0
All	All	1118/1186 (94%)	0.10	37 (3%) 46 46	34, 64, 98, 123	0

All (37) RSRZ outliers are listed below:

Mol	Chain	Res	Type	RSRZ
2	B	379	GLU	5.4
1	A	411	LEU	4.1
2	B	329	THR	4.0
1	A	413	PRO	4.0
2	B	312	TYR	4.0
2	B	313	ILE	3.9
2	B	65	LEU	3.9
4	L	128	GLY	3.8
1	A	412	VAL	3.7
2	B	311	SER	3.5
2	B	322	GLY	3.2
2	B	306	MET	3.1
2	B	64	PRO	3.0
2	B	314	PRO	3.0
2	B	330	PRO	2.9
2	B	34	LEU	2.8
4	L	120	PRO	2.8
2	B	66	ASP	2.7
4	L	78	VAL	2.7
3	H	66	GLY	2.6
4	L	125	LEU	2.6

*Continued on next page...*

*Continued from previous page...*

Mol	Chain	Res	Type	RSRZ
3	H	60	TYR	2.6
4	L	7	ALA	2.6
4	L	126	ALA	2.5
2	B	333	THR	2.5
2	B	388	ALA	2.5
4	L	1	ASP	2.5
4	L	121	SER	2.4
4	L	184	ASP	2.4
1	A	409	GLY	2.4
3	H	68	PHE	2.3
2	B	332	HIS	2.2
4	L	50	TYR	2.2
1	A	414	ARG	2.2
2	B	386	ARG	2.2
4	L	181	LEU	2.1
4	L	130	ALA	2.0

## 6.2 Non-standard residues in protein, DNA, RNA chains [i](#)

There are no non-standard protein/DNA/RNA residues in this entry.

## 6.3 Carbohydrates [i](#)

There are no carbohydrates in this entry.

## 6.4 Ligands [i](#)

In the following table, the Atoms column lists the number of modelled atoms in the group and the number defined in the chemical component dictionary. The B-factors column lists the minimum, median, 95<sup>th</sup> percentile and maximum values of B factors of atoms in the group. The column labelled 'Q< 0.9' lists the number of atoms with occupancy less than 0.9.

Mol	Type	Chain	Res	Atoms	RSCC	RSR	B-factors(Å <sup>2</sup> )	Q<0.9
7	SO4	A	509	5/5	0.79	0.33	76,85,96,121	0
7	SO4	L	301	5/5	0.80	0.22	100,118,132,135	0
7	SO4	B	404	5/5	0.86	0.20	96,113,135,140	0
7	SO4	B	405	5/5	0.87	0.12	135,139,143,147	0
6	GOL	A	503	6/6	0.87	0.19	62,77,89,90	0
5	NAG	A	502	14/15	0.87	0.31	84,94,97,103	0
7	SO4	L	302	5/5	0.91	0.18	91,96,106,122	0

*Continued on next page...*

*Continued from previous page...*

Mol	Type	Chain	Res	Atoms	RSCC	RSR	B-factors( $\text{\AA}^2$ )	Q<0.9
6	GOL	A	504	6/6	0.91	0.22	66,73,74,75	0
5	NAG	A	501	14/15	0.91	0.18	56,73,79,84	0
7	SO4	B	403	5/5	0.94	0.21	92,103,105,110	0
7	SO4	A	508	5/5	0.94	0.08	88,99,113,143	0
8	IPA	H	301	4/4	0.95	0.41	64,65,69,79	0
7	SO4	A	507	5/5	0.96	0.11	84,93,104,115	0
7	SO4	A	506	5/5	0.96	0.17	81,85,95,96	0
7	SO4	B	401	5/5	0.97	0.09	68,78,82,83	0
7	SO4	A	505	5/5	0.97	0.14	65,66,68,68	0
7	SO4	B	402	5/5	0.98	0.20	66,68,79,86	0

## 6.5 Other polymers [i](#)

There are no such residues in this entry.