



Full wwPDB X-ray Structure Validation Report ⓘ

May 16, 2019 – 05:15 PM EDT

PDB ID : 1UXH
Title : Large improvement in the thermal stability of a tetrameric malate dehydrogenase by single point mutations at the dimer-dimer interface
Authors : Bjork, A.; Dalhus, B.; Mantzilas, D.; Eijsink, V.G.H.; Sirevag, R.
Deposited on : 2004-02-25
Resolution : 2.10 Å(reported)

This is a Full wwPDB X-ray Structure Validation Report for a publicly released PDB entry.

We welcome your comments at validation@mail.wwpdb.org

A user guide is available at

<https://www.wwpdb.org/validation/2017/XrayValidationReportHelp>

with specific help available everywhere you see the ⓘ symbol.

The following versions of software and data (see [references ⓘ](#)) were used in the production of this report:

MolProbity : 4.02b-467
Mogul : 1.8.0 (224370), CSD as540be (2019)
Xtriage (Phenix) : 1.13
EDS : rb-20031633
Percentile statistics : 20171227.v01 (using entries in the PDB archive December 27th 2017)
Refmac : 5.8.0158
CCP4 : 7.0 (Gargrove)
Ideal geometry (proteins) : Engh & Huber (2001)
Ideal geometry (DNA, RNA) : Parkinson et al. (1996)
Validation Pipeline (wwPDB-VP) : rb-20031633

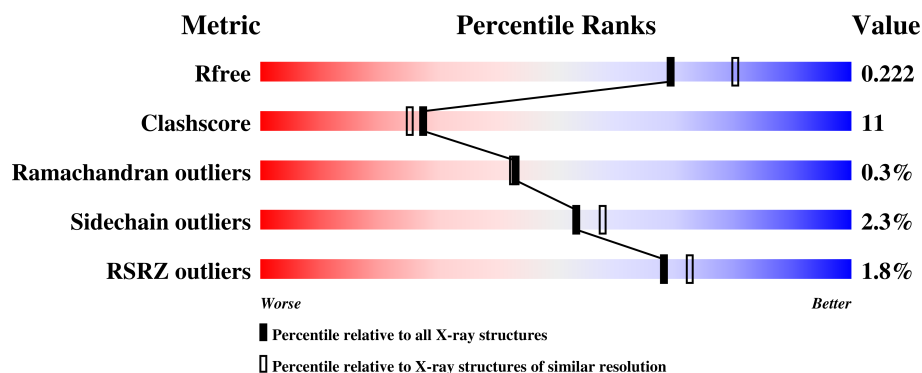
1 Overall quality at a glance

The following experimental techniques were used to determine the structure:

X-RAY DIFFRACTION

The reported resolution of this entry is 2.10 Å.

Percentile scores (ranging between 0-100) for global validation metrics of the entry are shown in the following graphic. The table shows the number of entries on which the scores are based.



Metric	Whole archive (#Entries)	Similar resolution (#Entries, resolution range(Å))
R_{free}	111664	4608 (2.10-2.10)
Clashscore	122126	5109 (2.10-2.10)
Ramachandran outliers	120053	5059 (2.10-2.10)
Sidechain outliers	120020	5060 (2.10-2.10)
RSRZ outliers	108989	4497 (2.10-2.10)

The table below summarises the geometric issues observed across the polymeric chains and their fit to the electron density. The red, orange, yellow and green segments on the lower bar indicate the fraction of residues that contain outliers for ≥ 3 , 2, 1 and 0 types of geometric quality criteria. A grey segment represents the fraction of residues that are not modelled. The numeric value for each fraction is indicated below the corresponding segment, with a dot representing fractions $\leq 5\%$. The upper red bar (where present) indicates the fraction of residues that have poor fit to the electron density. The numeric value is given above the bar.

Mol	Chain	Length	Quality of chain
1	A	309	<div> <div style="width: 100%; height: 10px; position: relative;"> <div style="position: absolute; top: -10px; left: 0; width: 100%;"></div> <div style="position: absolute; bottom: -10px; left: 0; width: 100%;"></div> <div style="position: absolute; top: 0; left: 0; width: 100%; height: 10px; background-color: red;"></div> <div style="position: absolute; top: 0; left: 82%; width: 16%; height: 10px; background-color: yellow;"></div> <div style="position: absolute; top: 0; left: 98%; width: 2%; height: 10px; background-color: orange;"></div> </div> <div style="display: flex; justify-content: space-between; width: 100%;"> 82% 16% • </div> </div>
1	B	309	<div> <div style="width: 100%; height: 10px; position: relative;"> <div style="position: absolute; top: -10px; left: 0; width: 100%;"></div> <div style="position: absolute; bottom: -10px; left: 0; width: 100%;"></div> <div style="position: absolute; top: 0; left: 0; width: 100%; height: 10px; background-color: red;"></div> <div style="position: absolute; top: 0; left: 3%; width: 75%; height: 10px; background-color: green;"></div> <div style="position: absolute; top: 0; left: 78%; width: 20%; height: 10px; background-color: yellow;"></div> <div style="position: absolute; top: 0; left: 98%; width: 2%; height: 10px; background-color: orange;"></div> </div> <div style="display: flex; justify-content: space-between; width: 100%;"> 3% 78% 20% • </div> </div>

2 Entry composition ⓘ

There are 4 unique types of molecules in this entry. The entry contains 5131 atoms, of which 0 are hydrogens and 0 are deuteriums.

In the tables below, the ZeroOcc column contains the number of atoms modelled with zero occupancy, the AltConf column contains the number of residues with at least one atom in alternate conformation and the Trace column contains the number of residues modelled with at most 2 atoms.

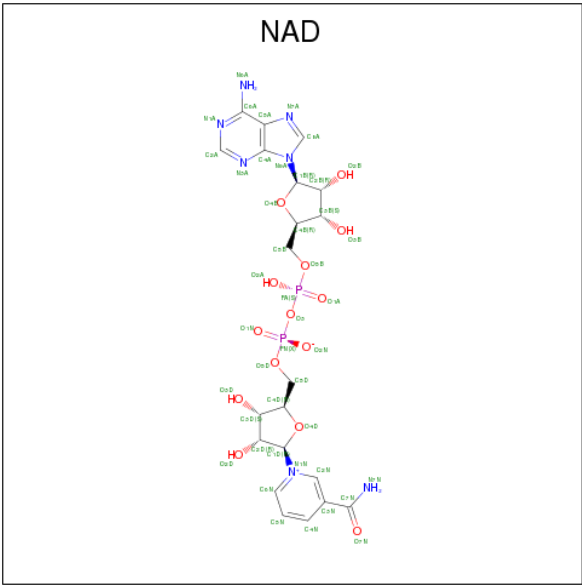
- Molecule 1 is a protein called MALATE DEHYDROGENASE.

Mol	Chain	Residues	Atoms					ZeroOcc	AltConf	Trace
1	A	308	Total	C	N	O	S	0	0	0
			2287	1450	389	437	11			
1	B	308	Total	C	N	O	S	0	0	0
			2287	1450	389	437	11			

There are 2 discrepancies between the modelled and reference sequences:

Chain	Residue	Modelled	Actual	Comment	Reference
A	165	GLN	GLU	engineered mutation	UNP P80040
B	165	GLN	GLU	engineered mutation	UNP P80040

- Molecule 2 is NICOTINAMIDE-ADENINE-DINUCLEOTIDE (three-letter code: NAD) (formula: C₂₁H₂₇N₇O₁₄P₂).



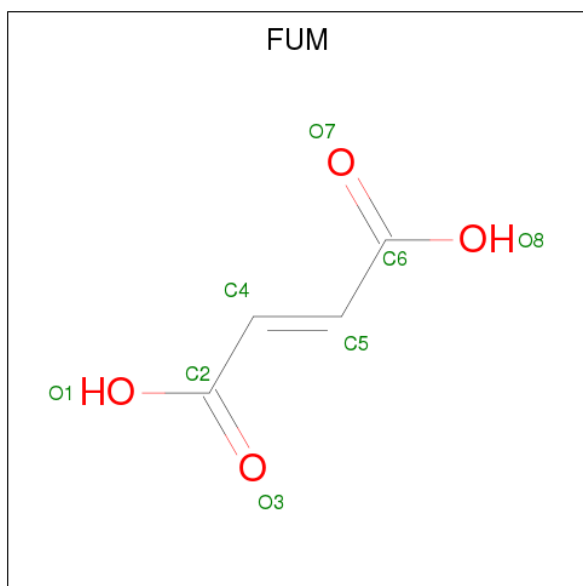
Mol	Chain	Residues	Atoms					ZeroOcc	AltConf
2	A	1	Total	C	N	O	P	0	0
			44	21	7	14	2		

Continued on next page...

Continued from previous page...

Mol	Chain	Residues	Atoms					ZeroOcc	AltConf
2	B	1	Total	C	N	O	P	0	0
			44	21	7	14	2		

- Molecule 3 is FUMARIC ACID (three-letter code: FUM) (formula: $C_4H_4O_4$).



Mol	Chain	Residues	Atoms			ZeroOcc	AltConf
3	A	1	Total	C	O	0	0
			8	4	4		
3	B	1	Total	C	O	0	0
			8	4	4		

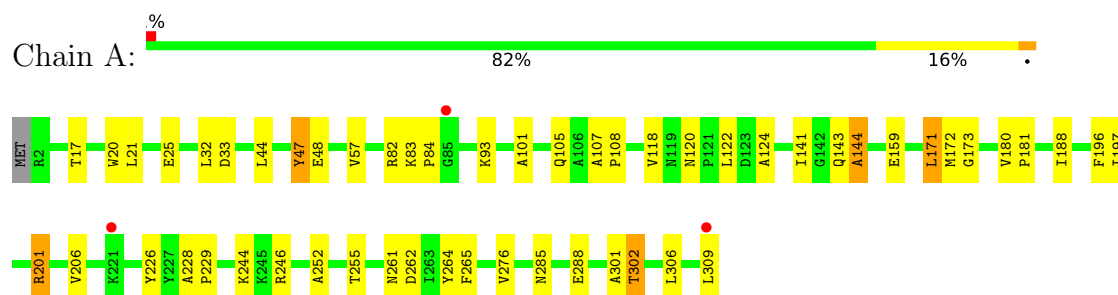
- Molecule 4 is water.

Mol	Chain	Residues	Atoms		ZeroOcc	AltConf
4	A	242	Total	O	0	0
			242	242		
4	B	211	Total	O	0	0
			211	211		

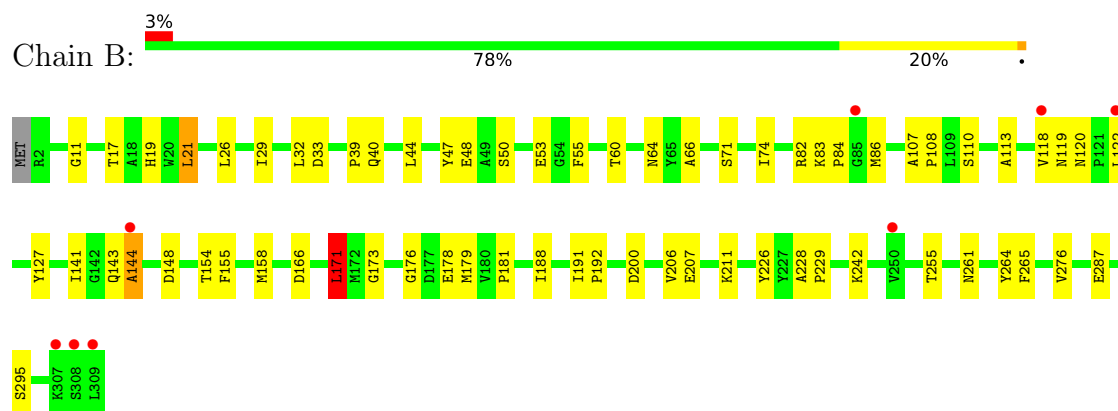
3 Residue-property plots [i](#)

These plots are drawn for all protein, RNA and DNA chains in the entry. The first graphic for a chain summarises the proportions of the various outlier classes displayed in the second graphic. The second graphic shows the sequence view annotated by issues in geometry and electron density. Residues are color-coded according to the number of geometric quality criteria for which they contain at least one outlier: green = 0, yellow = 1, orange = 2 and red = 3 or more. A red dot above a residue indicates a poor fit to the electron density ($RSRZ > 2$). Stretches of 2 or more consecutive residues without any outlier are shown as a green connector. Residues present in the sample, but not in the model, are shown in grey.

• Molecule 1: MALATE DEHYDROGENASE



• Molecule 1: MALATE DEHYDROGENASE



4 Data and refinement statistics

Property	Value	Source
Space group	P 43 21 2	Depositor
Cell constants a, b, c, α , β , γ	149.79Å 149.79Å 111.26Å 90.00° 90.00° 90.00°	Depositor
Resolution (Å)	30.00 – 2.10 29.96 – 2.10	Depositor EDS
% Data completeness (in resolution range)	92.1 (30.00-2.10) 91.9 (29.96-2.10)	Depositor EDS
R_{merge}	0.14	Depositor
R_{sym}	(Not available)	Depositor
$\langle I/\sigma(I) \rangle$ ¹	3.24 (at 2.10Å)	Xtriage
Refinement program	CNS 1.0	Depositor
R, R_{free}	0.235 , 0.262 0.200 , 0.222	Depositor DCC
R_{free} test set	7436 reflections (10.11%)	wwPDB-VP
Wilson B-factor (Å ²)	24.9	Xtriage
Anisotropy	0.732	Xtriage
Bulk solvent k_{sol} (e/Å ³), B_{sol} (Å ²)	0.37 , 76.5	EDS
L-test for twinning ²	$\langle L \rangle = 0.49$, $\langle L^2 \rangle = 0.32$	Xtriage
Estimated twinning fraction	No twinning to report.	Xtriage
F_o, F_c correlation	0.95	EDS
Total number of atoms	5131	wwPDB-VP
Average B, all atoms (Å ²)	28.0	wwPDB-VP

Xtriage's analysis on translational NCS is as follows: *The largest off-origin peak in the Patterson function is 3.73% of the height of the origin peak. No significant pseudotranslation is detected.*

¹Intensities estimated from amplitudes.

²Theoretical values of $\langle |L| \rangle$, $\langle L^2 \rangle$ for acentric reflections are 0.5, 0.333 respectively for untwinned datasets, and 0.375, 0.2 for perfectly twinned datasets.

5 Model quality [i](#)

5.1 Standard geometry [i](#)

Bond lengths and bond angles in the following residue types are not validated in this section: FUM, NAD

The Z score for a bond length (or angle) is the number of standard deviations the observed value is removed from the expected value. A bond length (or angle) with $|Z| > 5$ is considered an outlier worth inspection. RMSZ is the root-mean-square of all Z scores of the bond lengths (or angles).

Mol	Chain	Bond lengths		Bond angles	
		RMSZ	$\# Z > 5$	RMSZ	$\# Z > 5$
1	A	0.35	0/2322	0.61	0/3152
1	B	0.33	0/2322	0.60	1/3152 (0.0%)
All	All	0.34	0/4644	0.61	1/6304 (0.0%)

There are no bond length outliers.

All (1) bond angle outliers are listed below:

Mol	Chain	Res	Type	Atoms	Z	Observed(°)	Ideal(°)
1	B	171	LEU	CA-CB-CG	5.68	128.37	115.30

There are no chirality outliers.

There are no planarity outliers.

5.2 Too-close contacts [i](#)

In the following table, the Non-H and H(model) columns list the number of non-hydrogen atoms and hydrogen atoms in the chain respectively. The H(added) column lists the number of hydrogen atoms added and optimized by MolProbity. The Clashes column lists the number of clashes within the asymmetric unit, whereas Symm-Clashes lists symmetry related clashes.

Mol	Chain	Non-H	H(model)	H(added)	Clashes	Symm-Clashes
1	A	2287	0	2349	50	0
1	B	2287	0	2349	53	0
2	A	44	0	25	1	0
2	B	44	0	25	2	0
3	A	8	0	2	1	0
3	B	8	0	2	1	0
4	A	242	0	0	4	0
4	B	211	0	0	2	0

Continued on next page...

Continued from previous page...

Mol	Chain	Non-H	H(model)	H(added)	Clashes	Symm-Clashes
All	All	5131	0	4752	102	0

The all-atom clashscore is defined as the number of clashes found per 1000 atoms (including hydrogen atoms). The all-atom clashscore for this structure is 11.

All (102) close contacts within the same asymmetric unit are listed below, sorted by their clash magnitude.

Atom-1	Atom-2	Interatomic distance (Å)	Clash overlap (Å)
1:B:83:LYS:H	1:B:86:MET:HE2	1.33	0.91
1:B:255:THR:HA	1:B:261:ASN:HD22	1.36	0.91
1:A:17:THR:O	1:A:21:LEU:HD23	1.70	0.91
1:A:181:PRO:HG2	1:A:206:VAL:HG13	1.55	0.89
1:A:124:ALA:HB2	1:A:302:THR:HG23	1.57	0.87
1:B:83:LYS:H	1:B:86:MET:CE	1.95	0.79
1:B:171:LEU:HB2	1:B:181:PRO:HA	1.64	0.78
1:A:82:ARG:HD3	3:A:1311:FUM:O8	1.86	0.75
1:B:155:PHE:HD1	1:B:158:MET:HE3	1.50	0.75
1:A:124:ALA:HB2	1:A:302:THR:CG2	2.18	0.73
1:B:82:ARG:HD3	3:B:1311:FUM:O8	1.90	0.71
1:B:107:ALA:HB3	1:B:108:PRO:HD3	1.73	0.70
1:B:17:THR:HG22	1:B:21:LEU:HD22	1.74	0.69
1:A:93:LYS:HE3	4:A:2083:HOH:O	1.93	0.69
1:A:159:GLU:HG3	1:A:197:ILE:HD12	1.75	0.67
1:B:255:THR:HA	1:B:261:ASN:ND2	2.09	0.67
1:A:171:LEU:HD22	1:A:181:PRO:HB3	1.77	0.66
1:B:148:ASP:HB3	1:B:171:LEU:HD21	1.78	0.66
1:B:71:SER:O	1:B:113:ALA:HB2	1.95	0.66
1:B:83:LYS:N	1:B:86:MET:HE2	2.09	0.65
1:B:154:THR:HG22	1:B:158:MET:HE2	1.78	0.65
1:A:302:THR:HG21	4:A:2106:HOH:O	1.97	0.65
1:A:171:LEU:HD13	1:A:180:VAL:C	2.17	0.64
1:B:154:THR:HG22	1:B:158:MET:CE	2.28	0.64
1:B:181:PRO:HG2	1:B:206:VAL:HG13	1.80	0.64
1:B:287:GLU:HG3	4:B:2196:HOH:O	1.97	0.63
1:A:261:ASN:HD22	1:A:262:ASP:H	1.47	0.63
1:B:141:ILE:HG21	1:B:276:VAL:HG23	1.80	0.62
1:B:64:ASN:HD21	1:B:66:ALA:HB3	1.64	0.62
1:A:201:ARG:HH21	1:A:201:ARG:HG3	1.64	0.61
1:A:255:THR:HA	1:A:261:ASN:ND2	2.17	0.60
1:B:32:LEU:HD23	1:B:33:ASP:N	2.18	0.59
1:A:159:GLU:CG	1:A:197:ILE:HD12	2.34	0.58

Continued on next page...

Continued from previous page...

Atom-1	Atom-2	Interatomic distance (Å)	Clash overlap (Å)
1:B:64:ASN:ND2	1:B:66:ALA:HB3	2.17	0.58
1:A:32:LEU:HD23	1:A:33:ASP:N	2.21	0.55
1:A:107:ALA:HB3	1:A:108:PRO:HD3	1.90	0.54
1:A:118:VAL:O	2:A:1310:NAD:H2N	2.07	0.54
1:A:201:ARG:NH2	1:A:201:ARG:HG3	2.23	0.54
1:B:60:THR:HG23	4:B:2048:HOH:O	2.07	0.54
1:A:261:ASN:ND2	1:A:262:ASP:H	2.05	0.54
1:A:25:GLU:HA	1:A:57:VAL:HG11	1.90	0.53
1:A:261:ASN:ND2	1:A:262:ASP:N	2.57	0.52
1:A:171:LEU:HD12	1:A:172:MET:N	2.25	0.52
1:A:141:ILE:HG21	1:A:276:VAL:HG23	1.92	0.51
1:B:181:PRO:CG	1:B:206:VAL:HG13	2.40	0.51
1:A:101:ALA:O	1:A:105:GLN:HG3	2.11	0.51
1:B:171:LEU:HD12	1:B:171:LEU:C	2.31	0.51
1:B:44:LEU:O	1:B:48:GLU:HG3	2.11	0.51
1:A:181:PRO:CG	1:A:206:VAL:HG13	2.35	0.50
1:A:83:LYS:HB3	1:A:84:PRO:HD2	1.93	0.50
1:B:155:PHE:HD1	1:B:158:MET:CE	2.24	0.50
1:A:20:TRP:CZ3	1:B:53:GLU:HG3	2.48	0.49
1:B:228:ALA:HB3	1:B:229:PRO:HD3	1.94	0.49
1:B:122:LEU:HG	1:B:144:ALA:HB2	1.95	0.48
1:A:44:LEU:O	1:A:48:GLU:HG3	2.14	0.48
1:A:120:ASN:HA	1:A:122:LEU:N	2.29	0.48
1:A:122:LEU:HD13	1:A:122:LEU:C	2.34	0.48
1:A:171:LEU:HD13	1:A:180:VAL:O	2.15	0.47
1:B:228:ALA:N	1:B:229:PRO:CD	2.77	0.47
1:A:252:ALA:O	1:A:264:TYR:HA	2.15	0.47
1:A:47:TYR:HD1	1:A:47:TYR:O	1.97	0.46
1:A:228:ALA:HB3	1:A:229:PRO:HD3	1.96	0.46
1:A:196:PHE:O	1:A:197:ILE:HD13	2.15	0.46
1:A:261:ASN:HD22	1:A:262:ASP:N	2.11	0.46
1:B:173:GLY:HA2	1:B:265:PHE:CZ	2.50	0.45
1:B:32:LEU:HD23	1:B:32:LEU:C	2.36	0.45
1:A:32:LEU:HD23	1:A:32:LEU:C	2.37	0.45
1:B:155:PHE:CD1	1:B:158:MET:HE3	2.41	0.45
1:A:301:ALA:HA	4:A:2223:HOH:O	2.16	0.44
1:B:39:PRO:HG2	1:B:40:GLN:OE1	2.16	0.44
1:B:26:LEU:HD21	1:B:242:LYS:HD2	2.00	0.44
1:A:285:ASN:OD1	1:A:288:GLU:HG3	2.18	0.43
1:B:118:VAL:O	2:B:1310:NAD:H2N	2.19	0.43
1:B:74:ILE:HD11	1:B:110:SER:HB2	2.00	0.43

Continued on next page...

Continued from previous page...

Atom-1	Atom-2	Interatomic distance (Å)	Clash overlap (Å)
1:B:166:ASP:O	1:B:188:ILE:HA	2.17	0.43
1:B:83:LYS:N	1:B:86:MET:CE	2.71	0.43
1:A:255:THR:HA	1:A:261:ASN:HD22	1.83	0.43
1:B:83:LYS:HB3	1:B:84:PRO:HD2	2.01	0.43
1:B:11:GLY:HA3	2:B:1310:NAD:O5B	2.19	0.43
1:B:120:ASN:HA	1:B:122:LEU:N	2.34	0.42
1:B:19:HIS:C	1:B:19:HIS:CD2	2.93	0.42
1:B:83:LYS:HB2	1:B:86:MET:HE2	2.01	0.42
1:A:122:LEU:HG	1:A:144:ALA:HB2	2.01	0.42
1:B:207:GLU:OE2	1:B:211:LYS:HE3	2.20	0.42
1:A:25:GLU:HA	1:A:57:VAL:CG1	2.50	0.42
1:B:119:ASN:N	1:B:119:ASN:HD22	2.18	0.42
1:B:50:SER:HB2	1:B:55:PHE:O	2.20	0.42
1:A:244:LYS:HE3	1:A:246:ARG:HD3	2.02	0.42
1:B:141:ILE:HG21	1:B:276:VAL:CG2	2.47	0.41
1:B:127:TYR:HA	1:B:264:TYR:CD2	2.55	0.41
1:B:226:TYR:C	1:B:229:PRO:HD2	2.40	0.41
1:A:171:LEU:HD22	1:A:181:PRO:CB	2.47	0.41
1:A:173:GLY:HA2	1:A:265:PHE:CZ	2.56	0.41
1:B:176:GLY:O	1:B:179:MET:HB2	2.20	0.41
1:B:178:GLU:HB3	1:B:295:SER:HA	2.02	0.41
1:A:226:TYR:C	1:A:229:PRO:HD2	2.41	0.41
1:A:188:ILE:HD12	1:A:196:PHE:CD1	2.57	0.40
1:A:93:LYS:HG2	1:A:309:LEU:CD2	2.51	0.40
1:B:191:ILE:HA	1:B:192:PRO:HD3	2.00	0.40
1:B:21:LEU:HB3	1:B:29:ILE:HD11	2.03	0.40
1:A:201:ARG:HD2	1:A:201:ARG:HA	1.87	0.40
1:A:93:LYS:HB2	4:A:2084:HOH:O	2.21	0.40

There are no symmetry-related clashes.

5.3 Torsion angles [i](#)

5.3.1 Protein backbone [i](#)

In the following table, the Percentiles column shows the percent Ramachandran outliers of the chain as a percentile score with respect to all X-ray entries followed by that with respect to entries of similar resolution.

The Analysed column shows the number of residues for which the backbone conformation was analysed, and the total number of residues.

Mol	Chain	Analysed	Favoured	Allowed	Outliers	Percentiles	
1	A	306/309 (99%)	297 (97%)	8 (3%)	1 (0%)	43	43
1	B	306/309 (99%)	293 (96%)	12 (4%)	1 (0%)	43	43
All	All	612/618 (99%)	590 (96%)	20 (3%)	2 (0%)	43	43

All (2) Ramachandran outliers are listed below:

Mol	Chain	Res	Type
1	B	144	ALA
1	A	144	ALA

5.3.2 Protein sidechains ⓘ

In the following table, the Percentiles column shows the percent sidechain outliers of the chain as a percentile score with respect to all X-ray entries followed by that with respect to entries of similar resolution.

The Analysed column shows the number of residues for which the sidechain conformation was analysed, and the total number of residues.

Mol	Chain	Analysed	Rotameric	Outliers	Percentiles	
1	A	240/241 (100%)	234 (98%)	6 (2%)	50	55
1	B	240/241 (100%)	235 (98%)	5 (2%)	56	62
All	All	480/482 (100%)	469 (98%)	11 (2%)	53	58

All (11) residues with a non-rotameric sidechain are listed below:

Mol	Chain	Res	Type
1	A	47	TYR
1	A	143	GLN
1	A	171	LEU
1	A	201	ARG
1	A	302	THR
1	A	306	LEU
1	B	21	LEU
1	B	47	TYR
1	B	143	GLN
1	B	171	LEU
1	B	200	ASP

Some sidechains can be flipped to improve hydrogen bonding and reduce clashes. All (4) such sidechains are listed below:

Mol	Chain	Res	Type
1	A	261	ASN
1	B	64	ASN
1	B	119	ASN
1	B	261	ASN

5.3.3 RNA ⓘ

There are no RNA molecules in this entry.

5.4 Non-standard residues in protein, DNA, RNA chains ⓘ

There are no non-standard protein/DNA/RNA residues in this entry.

5.5 Carbohydrates ⓘ

There are no carbohydrates in this entry.

5.6 Ligand geometry ⓘ

4 ligands are modelled in this entry.

In the following table, the Counts columns list the number of bonds (or angles) for which Mogul statistics could be retrieved, the number of bonds (or angles) that are observed in the model and the number of bonds (or angles) that are defined in the Chemical Component Dictionary. The Link column lists molecule types, if any, to which the group is linked. The Z score for a bond length (or angle) is the number of standard deviations the observed value is removed from the expected value. A bond length (or angle) with $|Z| > 2$ is considered an outlier worth inspection. RMSZ is the root-mean-square of all Z scores of the bond lengths (or angles).

Mol	Type	Chain	Res	Link	Bond lengths			Bond angles		
					Counts	RMSZ	# Z > 2	Counts	RMSZ	# Z > 2
2	NAD	A	1310	-	39,48,48	2.50	10 (25%)	44,73,73	2.62	17 (38%)
3	FUM	A	1311	-	1,7,7	4.16	1 (100%)	2,8,8	5.98	2 (100%)
2	NAD	B	1310	-	39,48,48	2.39	12 (30%)	44,73,73	2.73	17 (38%)
3	FUM	B	1311	-	1,7,7	4.50	1 (100%)	2,8,8	5.78	2 (100%)

In the following table, the Chirals column lists the number of chiral outliers, the number of chiral centers analysed, the number of these observed in the model and the number defined in the Chemical Component Dictionary. Similar counts are reported in the Torsion and Rings columns. '-' means no outliers of that kind were identified.

Mol	Type	Chain	Res	Link	Chirals	Torsions	Rings
2	NAD	A	1310	-	-	0/22/62/62	0/5/5/5
3	FUM	A	1311	-	-	0/0/5/5	0/0/0/0
2	NAD	B	1310	-	-	0/22/62/62	0/5/5/5
3	FUM	B	1311	-	-	0/0/5/5	0/0/0/0

All (24) bond length outliers are listed below:

Mol	Chain	Res	Type	Atoms	Z	Observed(Å)	Ideal(Å)
2	B	1310	NAD	O2B-C2B	-3.42	1.34	1.43
2	A	1310	NAD	O2B-C2B	-3.38	1.35	1.43
2	B	1310	NAD	C2N-C3N	-2.07	1.35	1.39
2	B	1310	NAD	O4D-C4D	2.21	1.49	1.45
2	B	1310	NAD	C3B-C4B	2.24	1.58	1.53
2	A	1310	NAD	O4B-C4B	2.54	1.50	1.45
2	B	1310	NAD	O4B-C4B	2.55	1.50	1.45
2	A	1310	NAD	O4D-C4D	2.72	1.51	1.45
2	B	1310	NAD	O3B-C3B	3.41	1.51	1.43
2	B	1310	NAD	C6N-N1N	3.65	1.44	1.35
2	A	1310	NAD	O3B-C3B	3.70	1.51	1.43
2	B	1310	NAD	C4A-N3A	3.96	1.41	1.35
2	A	1310	NAD	C4A-N3A	4.00	1.41	1.35
2	A	1310	NAD	C6N-N1N	4.13	1.45	1.35
3	A	1311	FUM	C5-C4	4.16	1.52	1.31
3	B	1311	FUM	C5-C4	4.50	1.54	1.31
2	B	1310	NAD	C4N-C3N	4.90	1.47	1.39
2	B	1310	NAD	O4D-C1D	4.92	1.48	1.41
2	B	1310	NAD	C7N-N7N	5.32	1.43	1.33
2	A	1310	NAD	C4N-C3N	5.35	1.48	1.39
2	A	1310	NAD	O4D-C1D	5.66	1.49	1.41
2	A	1310	NAD	C7N-N7N	5.66	1.43	1.33
2	B	1310	NAD	C2A-N3A	6.27	1.42	1.32
2	A	1310	NAD	C2A-N3A	6.71	1.43	1.32

All (38) bond angle outliers are listed below:

Mol	Chain	Res	Type	Atoms	Z	Observed(°)	Ideal(°)
3	A	1311	FUM	C2-C4-C5	-8.16	106.07	123.50
3	B	1311	FUM	C2-C4-C5	-7.83	106.76	123.50
2	B	1310	NAD	C5N-C4N-C3N	-6.00	113.16	120.34
2	A	1310	NAD	C5N-C4N-C3N	-5.64	113.58	120.34
2	A	1310	NAD	N3A-C2A-N1A	-5.23	120.25	128.68
2	B	1310	NAD	C3N-C7N-N7N	-5.12	111.93	117.75
2	B	1310	NAD	N3A-C2A-N1A	-5.10	120.47	128.68

Continued on next page...

Continued from previous page...

Mol	Chain	Res	Type	Atoms	Z	Observed(°)	Ideal(°)
2	A	1310	NAD	C3N-C7N-N7N	-4.34	112.82	117.75
2	B	1310	NAD	C4B-O4B-C1B	-4.09	105.56	109.83
2	A	1310	NAD	C4B-O4B-C1B	-3.80	105.86	109.83
2	B	1310	NAD	C5A-C6A-N1A	-3.74	111.51	120.31
2	A	1310	NAD	C5A-C6A-N1A	-3.60	111.84	120.31
2	B	1310	NAD	C1B-N9A-C4A	-2.89	121.64	126.64
2	A	1310	NAD	C1B-N9A-C4A	-2.61	122.13	126.64
3	B	1311	FUM	C6-C5-C4	-2.33	118.53	123.50
2	B	1310	NAD	C5N-C6N-N1N	-2.28	117.00	120.39
3	A	1311	FUM	C6-C5-C4	-2.20	118.79	123.50
2	A	1310	NAD	C5N-C6N-N1N	-2.20	117.11	120.39
2	A	1310	NAD	C2D-C3D-C4D	2.01	106.44	102.60
2	A	1310	NAD	C5A-C6A-N6A	2.14	123.75	120.38
2	B	1310	NAD	C5A-C6A-N6A	2.31	124.00	120.38
2	B	1310	NAD	C2D-C3D-C4D	2.37	107.15	102.60
2	B	1310	NAD	PN-O3-PA	2.60	140.83	132.57
2	A	1310	NAD	PN-O3-PA	2.66	141.03	132.57
2	A	1310	NAD	N6A-C6A-N1A	2.81	124.41	118.57
2	B	1310	NAD	N6A-C6A-N1A	2.85	124.49	118.57
2	B	1310	NAD	C2B-C3B-C4B	2.89	108.14	102.60
2	A	1310	NAD	C2B-C3B-C4B	3.11	108.56	102.60
2	A	1310	NAD	O2B-C2B-C3B	3.24	122.32	111.80
2	B	1310	NAD	O2B-C2B-C3B	3.27	122.40	111.80
2	A	1310	NAD	C6N-C5N-C4N	4.15	125.58	119.43
2	B	1310	NAD	C6N-C5N-C4N	4.16	125.58	119.43
2	B	1310	NAD	C2N-C3N-C4N	4.27	123.17	118.26
2	A	1310	NAD	C2N-C3N-C4N	4.31	123.21	118.26
2	A	1310	NAD	O7N-C7N-C3N	5.42	126.17	119.62
2	B	1310	NAD	O7N-C7N-C3N	6.13	127.04	119.62
2	A	1310	NAD	C2A-N1A-C6A	6.49	130.02	118.77
2	B	1310	NAD	C2A-N1A-C6A	6.71	130.39	118.77

There are no chirality outliers.

There are no torsion outliers.

There are no ring outliers.

4 monomers are involved in 5 short contacts:

Mol	Chain	Res	Type	Clashes	Symm-Clashes
2	A	1310	NAD	1	0
3	A	1311	FUM	1	0
2	B	1310	NAD	2	0

Continued on next page...

Continued from previous page...

Mol	Chain	Res	Type	Clashes	Symm-Clashes
3	B	1311	FUM	1	0

5.7 Other polymers [i](#)

There are no such residues in this entry.

5.8 Polymer linkage issues [i](#)

There are no chain breaks in this entry.

6 Fit of model and data [i](#)

6.1 Protein, DNA and RNA chains [i](#)

In the following table, the column labelled ‘#RSRZ > 2’ contains the number (and percentage) of RSRZ outliers, followed by percent RSRZ outliers for the chain as percentile scores relative to all X-ray entries and entries of similar resolution. The OWAB column contains the minimum, median, 95th percentile and maximum values of the occupancy-weighted average B-factor per residue. The column labelled ‘Q < 0.9’ lists the number of (and percentage) of residues with an average occupancy less than 0.9.

Mol	Chain	Analysed	<RSRZ>	#RSRZ>2	OWAB(Å ²)	Q<0.9
1	A	308/309 (99%)	-0.31	3 (0%) 82 85	14, 25, 36, 47	7 (2%)
1	B	308/309 (99%)	-0.21	8 (2%) 56 62	17, 27, 38, 59	12 (3%)
All	All	616/618 (99%)	-0.26	11 (1%) 68 72	14, 26, 37, 59	19 (3%)

All (11) RSRZ outliers are listed below:

Mol	Chain	Res	Type	RSRZ
1	B	309	LEU	3.9
1	B	308	SER	2.8
1	B	307	LYS	2.5
1	A	309	LEU	2.4
1	B	85	GLY	2.3
1	B	122	LEU	2.2
1	B	144	ALA	2.2
1	B	118	VAL	2.1
1	A	85	GLY	2.1
1	A	221	LYS	2.0
1	B	250	VAL	2.0

6.2 Non-standard residues in protein, DNA, RNA chains [i](#)

There are no non-standard protein/DNA/RNA residues in this entry.

6.3 Carbohydrates [i](#)

There are no carbohydrates in this entry.

6.4 Ligands [i](#)

In the following table, the Atoms column lists the number of modelled atoms in the group and the number defined in the chemical component dictionary. The B-factors column lists the minimum, median, 95th percentile and maximum values of B factors of atoms in the group. The column labelled 'Q< 0.9' lists the number of atoms with occupancy less than 0.9.

Mol	Type	Chain	Res	Atoms	RSCC	RSR	B-factors(\AA^2)	Q<0.9
3	FUM	A	1311	8/8	0.86	0.20	26,30,33,34	0
2	NAD	B	1310	44/44	0.95	0.10	22,27,29,30	0
2	NAD	A	1310	44/44	0.96	0.10	20,26,29,31	0
3	FUM	B	1311	8/8	0.96	0.09	18,20,23,23	0

6.5 Other polymers [i](#)

There are no such residues in this entry.