



wwPDB X-ray Structure Validation Summary Report ⓘ

Jul 16, 2019 – 12:53 AM EDT

PDB ID : 2UX3
Title : X-ray high resolution structure of the photosynthetic reaction center from Rb. sphaeroides at pH 9 in the neutral state
Authors : Koepke, J.; Diehm, R.; Fritzsche, G.
Deposited on : 2007-03-26
Resolution : 2.50 Å(reported)

This is a wwPDB X-ray Structure Validation Summary Report for a publicly released PDB entry.

We welcome your comments at validation@mail.wwpdb.org

A user guide is available at

<https://www.wwpdb.org/validation/2017/XrayValidationReportHelp>

with specific help available everywhere you see the ⓘ symbol.

The following versions of software and data (see [references ⓘ](#)) were used in the production of this report:

MolProbity : 4.02b-467
Mogul : 1.8.0 (224370), CSD as540be (2019)
Xtriage (Phenix) : 1.13
EDS : 2.3.2
buster-report : 1.1.7 (2018)
Percentile statistics : 20171227.v01 (using entries in the PDB archive December 27th 2017)
Refmac : 5.8.0158
CCP4 : 7.0 (Gargrove)
Ideal geometry (proteins) : Engh & Huber (2001)
Ideal geometry (DNA, RNA) : Parkinson et al. (1996)
Validation Pipeline (wwPDB-VP) : 2.3.2

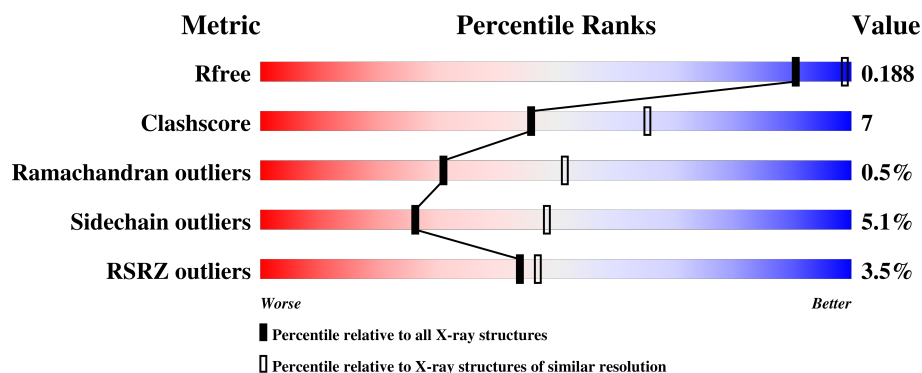
1 Overall quality at a glance

The following experimental techniques were used to determine the structure:

X-RAY DIFFRACTION

The reported resolution of this entry is 2.50 Å.

Percentile scores (ranging between 0-100) for global validation metrics of the entry are shown in the following graphic. The table shows the number of entries on which the scores are based.



Metric	Whole archive (#Entries)	Similar resolution (#Entries, resolution range(Å))
R_{free}	111664	4155 (2.50-2.50)
Clashscore	122126	4827 (2.50-2.50)
Ramachandran outliers	120053	4735 (2.50-2.50)
Sidechain outliers	120020	4737 (2.50-2.50)
RSRZ outliers	108989	4058 (2.50-2.50)

The table below summarises the geometric issues observed across the polymeric chains and their fit to the electron density. The red, orange, yellow and green segments on the lower bar indicate the fraction of residues that contain outliers for ≥ 3 , 2, 1 and 0 types of geometric quality criteria. A grey segment represents the fraction of residues that are not modelled. The numeric value for each fraction is indicated below the corresponding segment, with a dot representing fractions $\leq 5\%$. The upper red bar (where present) indicates the fraction of residues that have poor fit to the electron density. The numeric value is given above the bar.

Mol	Chain	Length	Quality of chain
1	H	260	<div> <div>3%</div> <div>82%</div> <div>9%</div> <div>7%</div> </div>
2	L	281	<div> <div>3%</div> <div>84%</div> <div>15%</div> <div>.</div> </div>
3	M	307	<div> <div>4%</div> <div>82%</div> <div>16%</div> <div>..</div> </div>

The following table lists non-polymeric compounds, carbohydrate monomers and non-standard residues in protein, DNA, RNA chains that are outliers for geometric or electron-density-fit criteria:

Mol	Type	Chain	Res	Chirality	Geometry	Clashes	Electron density
10	HTO	L	1288	-	-	-	X
14	CDL	M	1316	-	-	-	X
5	BCL	L	1282	X	-	-	-
5	BCL	L	1286	X	-	-	-
5	BCL	M	1303	X	-	-	-
5	BCL	M	1304	X	-	-	-
6	LDA	L	1711	-	-	-	X
6	LDA	M	1309	-	-	-	X
6	LDA	M	1310	-	-	-	X
6	LDA	M	1311	-	-	-	X

2 Entry composition [i](#)

There are 15 unique types of molecules in this entry. The entry contains 7606 atoms, of which 0 are hydrogens and 0 are deuteriums.

In the tables below, the ZeroOcc column contains the number of atoms modelled with zero occupancy, the AltConf column contains the number of residues with at least one atom in alternate conformation and the Trace column contains the number of residues modelled with at most 2 atoms.

- Molecule 1 is a protein called REACTION CENTER PROTEIN H CHAIN.

Mol	Chain	Residues	Atoms					ZeroOcc	AltConf	Trace
1	H	241	Total	C	N	O	S	0	3	1
			1846	1181	319	337	9			

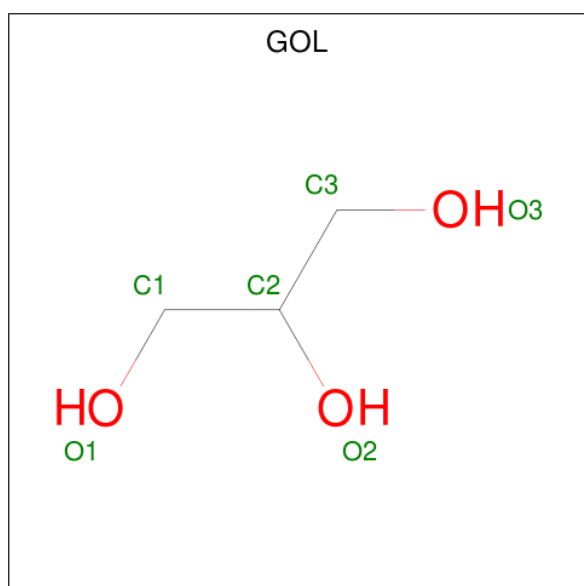
- Molecule 2 is a protein called REACTION CENTER PROTEIN L CHAIN.

Mol	Chain	Residues	Atoms					ZeroOcc	AltConf	Trace
2	L	281	Total	C	N	O	S	0	0	0
			2232	1507	355	362	8			

- Molecule 3 is a protein called REACTION CENTER PROTEIN M CHAIN.

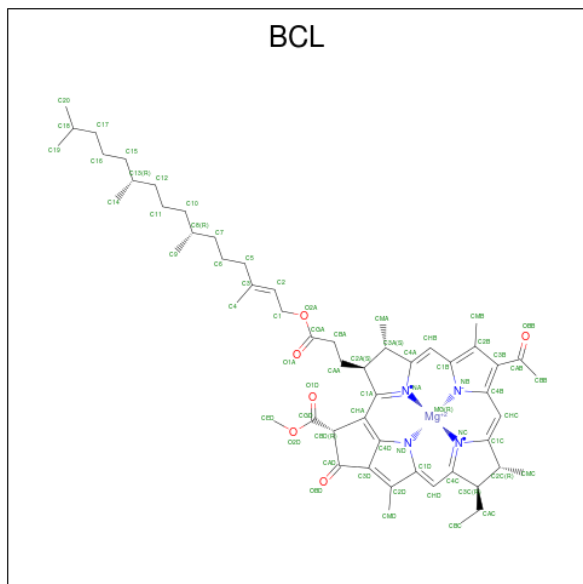
Mol	Chain	Residues	Atoms					ZeroOcc	AltConf	Trace
3	M	303	Total	C	N	O	S	0	1	1
			2419	1616	396	397	10			

- Molecule 4 is GLYCEROL (three-letter code: GOL) (formula: C₃H₈O₃).



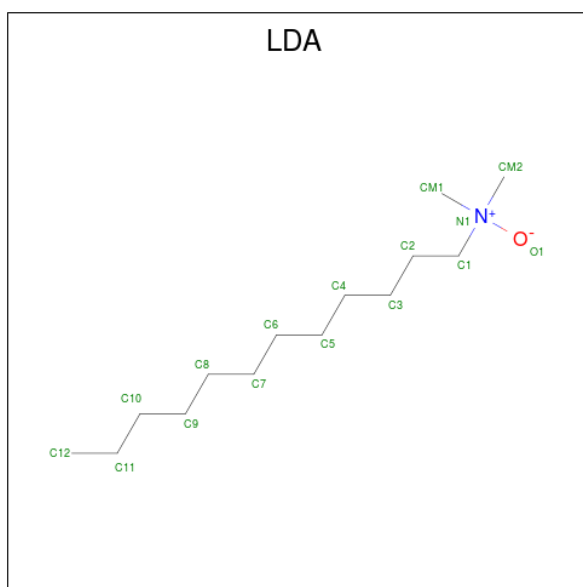
Mol	Chain	Residues	Atoms			ZeroOcc	AltConf
4	H	1	Total 6	C 3	O 3	0	0
4	H	1	Total 6	C 3	O 3	0	0
4	H	1	Total 6	C 3	O 3	0	0
4	H	1	Total 6	C 3	O 3	0	0
4	L	1	Total 6	C 3	O 3	0	0
4	L	1	Total 6	C 3	O 3	0	0

- Molecule 5 is BACTERIOCHLOROPHYLL A (three-letter code: BCL) (formula: $\text{C}_{55}\text{H}_{74}\text{MgN}_4\text{O}_6$).



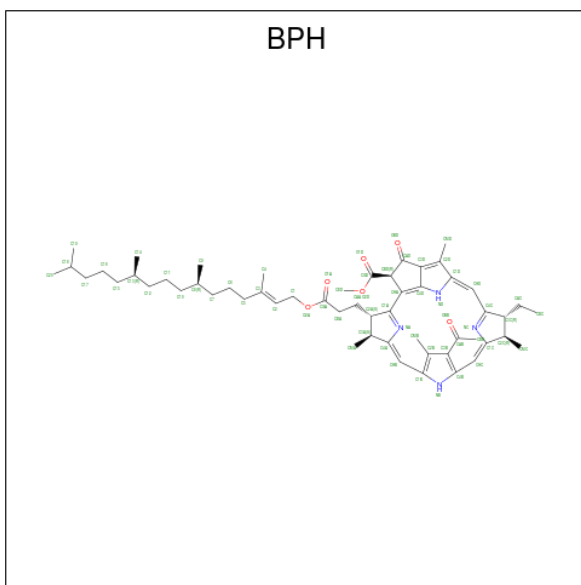
Mol	Chain	Residues	Atoms					ZeroOcc	AltConf
5	L	1	Total 66	C 55	Mg 1	N 4	O 6	0	0
5	L	1	Total 66	C 55	Mg 1	N 4	O 6	0	0
5	M	1	Total 66	C 55	Mg 1	N 4	O 6	0	0
5	M	1	Total 66	C 55	Mg 1	N 4	O 6	0	0

- Molecule 6 is LAURYL DIMETHYLAMINE-N-OXIDE (three-letter code: LDA) (formula: $C_{14}H_{31}NO$).



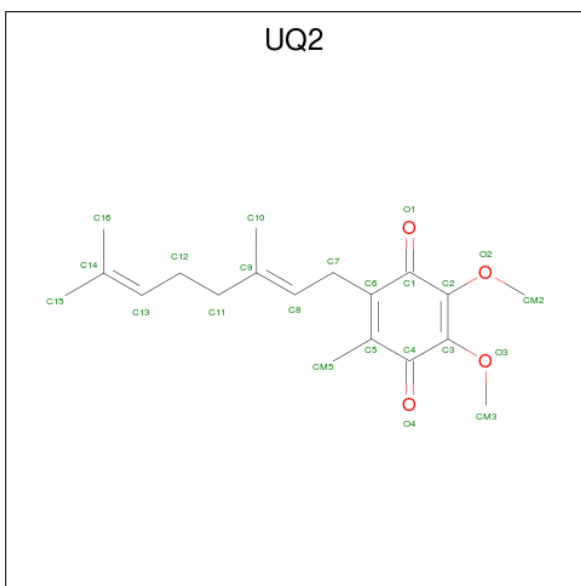
Mol	Chain	Residues	Atoms				ZeroOcc	AltConf
6	L	1	Total	C	N	O	0	0
			16	14	1	1		
6	L	1	Total	C	N	O	0	0
			16	14	1	1		
6	M	1	Total	C	N	O	0	0
			16	14	1	1		
6	M	1	Total	C	N	O	0	0
			16	14	1	1		
6	M	1	Total	C	N	O	0	0
			16	14	1	1		
6	M	1	Total	C	N	O	0	0
			16	14	1	1		
6	M	1	Total	C	N	O	0	0
			16	14	1	1		
6	M	1	Total	C	N	O	0	0
			16	14	1	1		

- Molecule 7 is BACTERIOPHEOPHYTIN A (three-letter code: BPH) (formula: C₅₅H₇₆N₄O₆).



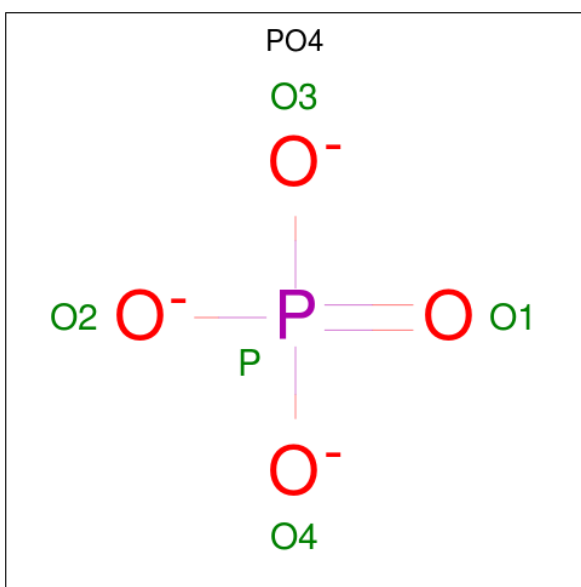
Mol	Chain	Residues	Atoms				ZeroOcc	AltConf
7	L	1	Total	C	N	O	0	0
			65	55	4	6		
7	M	1	Total	C	N	O	0	0
			65	55	4	6		

- Molecule 8 is UBIQUINONE-2 (three-letter code: UQ2) (formula: $C_{19}H_{26}O_4$).



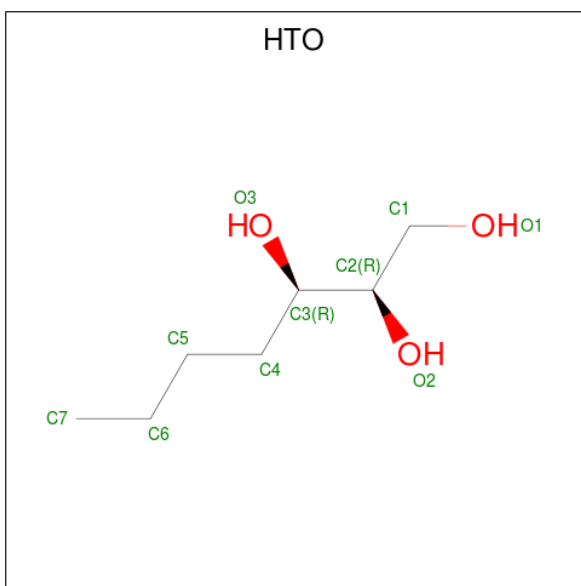
Mol	Chain	Residues	Atoms			ZeroOcc	AltConf
8	L	1	Total	C	O	0	1
			46	38	8		

- Molecule 9 is PHOSPHATE ION (three-letter code: PO4) (formula: O_4P).



Mol	Chain	Residues	Atoms			ZeroOcc	AltConf
9	L	1	Total	O	P	0	0
			5	4	1		

- Molecule 10 is HEPTANE-1,2,3-TRIOL (three-letter code: HTO) (formula: $C_7H_{16}O_3$).

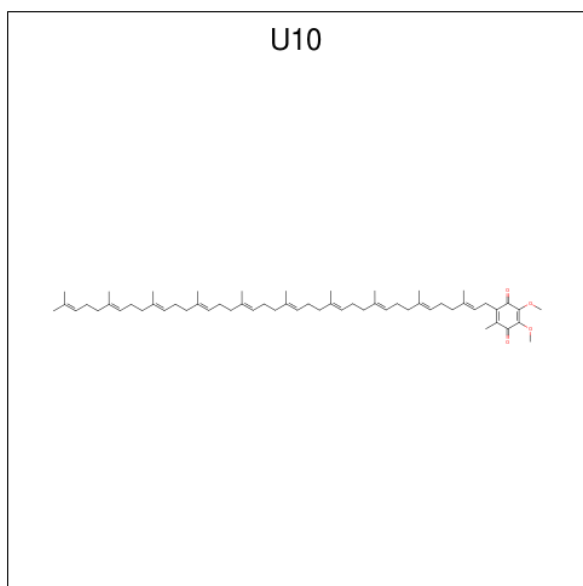


Mol	Chain	Residues	Atoms			ZeroOcc	AltConf
10	L	1	Total	C	O	0	0
			10	7	3		

- Molecule 11 is FE (III) ION (three-letter code: FE) (formula: Fe).

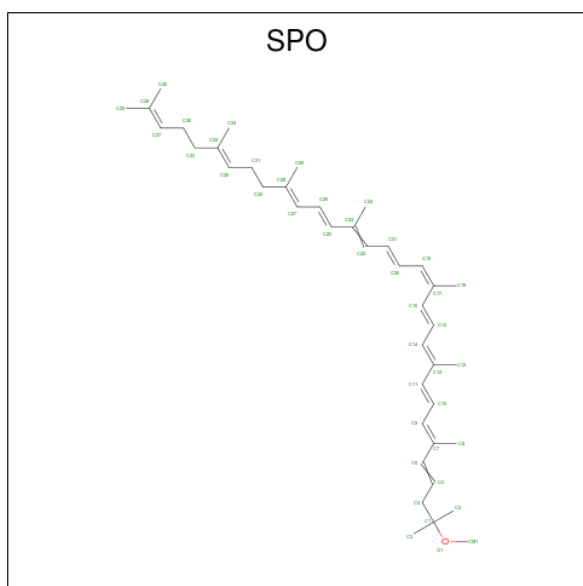
Mol	Chain	Residues	Atoms		ZeroOcc	AltConf
11	M	1	Total	Fe	0	0
			1	1		

- Molecule 12 is UBIQUINONE-10 (three-letter code: U10) (formula: $C_{59}H_{90}O_4$).



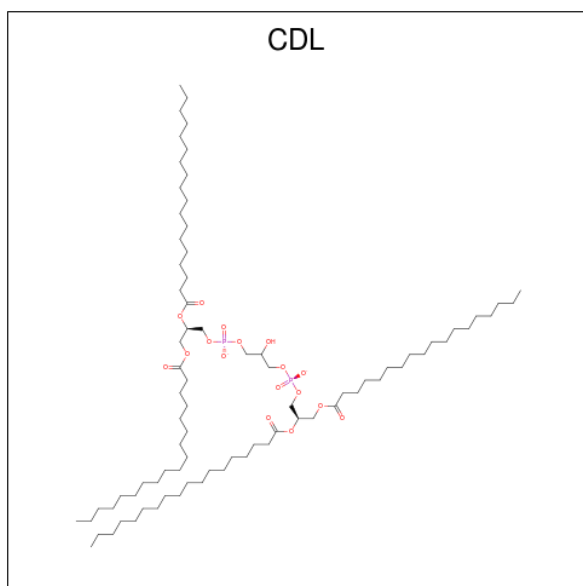
Mol	Chain	Residues	Atoms			ZeroOcc	AltConf
12	M	1	Total	C	O	0	0
			48	44	4		

- Molecule 13 is SPHEROIDENE (three-letter code: SPO) (formula: $C_{41}H_{60}O$).



Mol	Chain	Residues	Atoms			ZeroOcc	AltConf
13	M	1	Total	C	O	0	0
			42	41	1		

- Molecule 14 is CARDIOLIPIN (three-letter code: CDL) (formula: $C_{81}H_{156}O_{17}P_2$).



Mol	Chain	Residues	Atoms				ZeroOcc	AltConf
14	M	1	Total	C	O	P	0	0
			81	62	17	2		

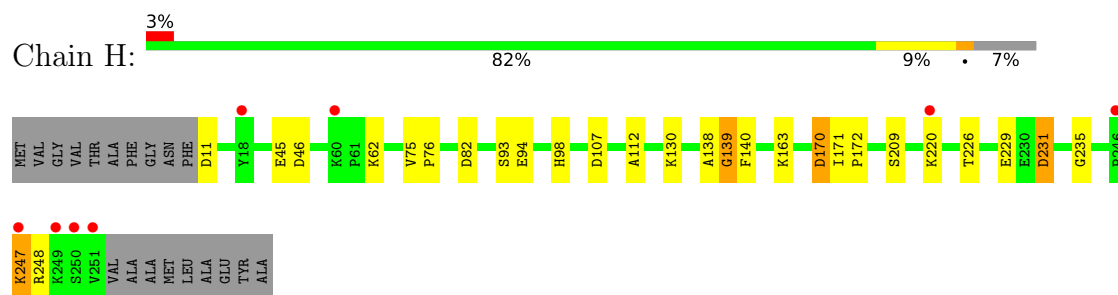
- Molecule 15 is water.

Mol	Chain	Residues	Atoms		ZeroOcc	AltConf
15	H	114	Total	O	0	0
			114	114		
15	L	92	Total	O	0	0
			92	92		
15	M	96	Total	O	0	0
			96	96		

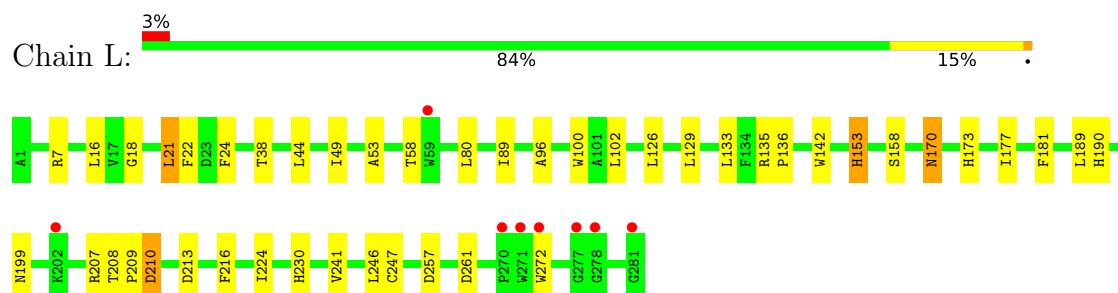
3 Residue-property plots

These plots are drawn for all protein, RNA and DNA chains in the entry. The first graphic for a chain summarises the proportions of the various outlier classes displayed in the second graphic. The second graphic shows the sequence view annotated by issues in geometry and electron density. Residues are color-coded according to the number of geometric quality criteria for which they contain at least one outlier: green = 0, yellow = 1, orange = 2 and red = 3 or more. A red dot above a residue indicates a poor fit to the electron density ($RSRZ > 2$). Stretches of 2 or more consecutive residues without any outlier are shown as a green connector. Residues present in the sample, but not in the model, are shown in grey.

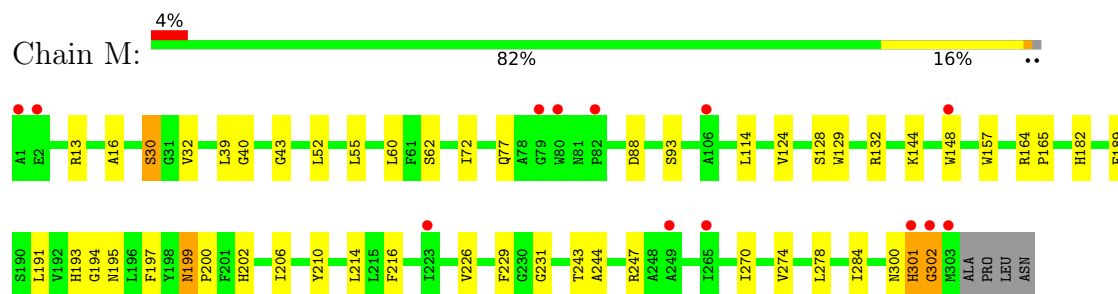
• Molecule 1: REACTION CENTER PROTEIN H CHAIN



• Molecule 2: REACTION CENTER PROTEIN L CHAIN



• Molecule 3: REACTION CENTER PROTEIN M CHAIN



4 Data and refinement statistics

Property	Value	Source
Space group	P 31 2 1	Depositor
Cell constants a, b, c, α , β , γ	139.45Å 139.45Å 184.58Å 90.00° 90.00° 120.00°	Depositor
Resolution (Å)	119.52 – 2.50 36.90 – 2.50	Depositor EDS
% Data completeness (in resolution range)	92.1 (119.52-2.50) 86.6 (36.90-2.50)	Depositor EDS
R_{merge}	0.04	Depositor
R_{sym}	(Not available)	Depositor
$\langle I/\sigma(I) \rangle$ ¹	2.79 (at 2.51Å)	Xtriage
Refinement program	REFMAC 5.1.24	Depositor
R, R_{free}	0.185 , 0.221 0.182 , 0.188	Depositor DCC
R_{free} test set	2004 reflections (3.01%)	wwPDB-VP
Wilson B-factor (Å ²)	44.7	Xtriage
Anisotropy	0.190	Xtriage
Bulk solvent k_{sol} (e/Å ³), B_{sol} (Å ²)	0.35 , 49.2	EDS
L-test for twinning ²	$\langle L \rangle = 0.48$, $\langle L^2 \rangle = 0.32$	Xtriage
Estimated twinning fraction	0.021 for -h,-k,l	Xtriage
F_o, F_c correlation	0.95	EDS
Total number of atoms	7606	wwPDB-VP
Average B, all atoms (Å ²)	51.0	wwPDB-VP

Xtriage's analysis on translational NCS is as follows: *The largest off-origin peak in the Patterson function is 2.99% of the height of the origin peak. No significant pseudotranslation is detected.*

¹Intensities estimated from amplitudes.

²Theoretical values of $\langle |L| \rangle$, $\langle L^2 \rangle$ for acentric reflections are 0.5, 0.333 respectively for untwinned datasets, and 0.375, 0.2 for perfectly twinned datasets.

5 Model quality

5.1 Standard geometry

Bond lengths and bond angles in the following residue types are not validated in this section: BCL, GOL, LDA, CDL, BPH, PO4, HTO, FE, SPO, U10, UQ2

The Z score for a bond length (or angle) is the number of standard deviations the observed value is removed from the expected value. A bond length (or angle) with $|Z| > 5$ is considered an outlier worth inspection. RMSZ is the root-mean-square of all Z scores of the bond lengths (or angles).

Mol	Chain	Bond lengths		Bond angles	
		RMSZ	$\# Z > 5$	RMSZ	$\# Z > 5$
1	H	0.63	0/1906	0.78	7/2591 (0.3%)
2	L	0.66	0/2320	0.68	4/3175 (0.1%)
3	M	0.61	0/2517	0.68	2/3438 (0.1%)
All	All	0.63	0/6743	0.71	13/9204 (0.1%)

Chiral center outliers are detected by calculating the chiral volume of a chiral center and verifying if the center is modelled as a planar moiety or with the opposite hand. A planarity outlier is detected by checking planarity of atoms in a peptide group, atoms in a mainchain group or atoms of a sidechain that are expected to be planar.

Mol	Chain	#Chirality outliers	#Planarity outliers
3	M	0	1

There are no bond length outliers.

The worst 5 of 13 bond angle outliers are listed below:

Mol	Chain	Res	Type	Atoms	Z	Observed(°)	Ideal(°)
1	H	82	ASP	CB-CG-OD2	7.62	125.16	118.30
1	H	11	ASP	CB-CG-OD2	7.00	124.60	118.30
2	L	213	ASP	CB-CG-OD2	6.80	124.42	118.30
1	H	139	GLY	N-CA-C	-5.99	98.13	113.10
2	L	210	ASP	CB-CG-OD1	5.96	123.67	118.30

There are no chirality outliers.

All (1) planarity outliers are listed below:

Mol	Chain	Res	Type	Group
3	M	300	ASN	Peptide

5.2 Too-close contacts

In the following table, the Non-H and H(model) columns list the number of non-hydrogen atoms and hydrogen atoms in the chain respectively. The H(added) column lists the number of hydrogen atoms added and optimized by MolProbity. The Clashes column lists the number of clashes within the asymmetric unit, whereas Symm-Clashes lists symmetry related clashes.

Mol	Chain	Non-H	H(model)	H(added)	Clashes	Symm-Clashes
1	H	1846	0	1861	13	0
2	L	2232	0	2187	28	0
3	M	2419	0	2327	28	0
4	H	24	0	32	1	0
4	L	12	0	16	1	0
5	L	132	0	148	8	0
5	M	132	0	148	18	0
6	L	32	0	62	2	0
6	M	112	0	217	2	0
7	L	65	0	76	9	0
7	M	65	0	76	14	0
8	L	46	0	52	8	0
9	L	5	0	0	0	0
10	L	10	0	16	2	0
11	M	1	0	0	0	0
12	M	48	0	63	2	0
13	M	42	0	60	3	0
14	M	81	0	82	3	0
15	H	114	0	0	0	1
15	L	92	0	0	0	0
15	M	96	0	0	0	0
All	All	7606	0	7423	101	1

The all-atom clashscore is defined as the number of clashes found per 1000 atoms (including hydrogen atoms). The all-atom clashscore for this structure is 7.

The worst 5 of 101 close contacts within the same asymmetric unit are listed below, sorted by their clash magnitude.

Atom-1	Atom-2	Interatomic distance (Å)	Clash overlap (Å)
2:L:224:ILE:HG22	8:L:1285[A]:UQ2:H8	1.61	0.83
8:L:1285[A]:UQ2:H161	6:L:1711:LDA:H121	1.62	0.81
3:M:197:PHE:HZ	5:M:1304:BCL:HBB2	1.46	0.79
2:L:181:PHE:CD2	7:M:1313:BPH:HBB1	2.18	0.78
3:M:197:PHE:CZ	5:M:1304:BCL:HBB2	2.18	0.78

All (1) symmetry-related close contacts are listed below. The label for Atom-2 includes the symmetry operator and encoded unit-cell translations to be applied.

Atom-1	Atom-2	Interatomic distance (Å)	Clash overlap (Å)
15:H:2033:HOH:O	15:H:2033:HOH:O[4_555]	2.10	0.10

5.3 Torsion angles [i](#)

5.3.1 Protein backbone [i](#)

In the following table, the Percentiles column shows the percent Ramachandran outliers of the chain as a percentile score with respect to all X-ray entries followed by that with respect to entries of similar resolution.

The Analysed column shows the number of residues for which the backbone conformation was analysed, and the total number of residues.

Mol	Chain	Analysed	Favoured	Allowed	Outliers	Percentiles	
1	H	242/260 (93%)	234 (97%)	7 (3%)	1 (0%)	36	57
2	L	279/281 (99%)	270 (97%)	9 (3%)	0	100	100
3	M	302/307 (98%)	286 (95%)	13 (4%)	3 (1%)	17	31
All	All	823/848 (97%)	790 (96%)	29 (4%)	4 (0%)	31	51

All (4) Ramachandran outliers are listed below:

Mol	Chain	Res	Type
3	M	301	HIS
1	H	248	ARG
3	M	30	SER
3	M	302	GLY

5.3.2 Protein sidechains [i](#)

In the following table, the Percentiles column shows the percent sidechain outliers of the chain as a percentile score with respect to all X-ray entries followed by that with respect to entries of similar resolution.

The Analysed column shows the number of residues for which the sidechain conformation was analysed, and the total number of residues.

Mol	Chain	Analysed	Rotameric	Outliers	Percentiles	
1	H	198/208 (95%)	192 (97%)	6 (3%)	44	71

Continued on next page...

Continued from previous page...

Mol	Chain	Analysed	Rotameric	Outliers	Percentiles	
2	L	220/220 (100%)	204 (93%)	16 (7%)	15	29
3	M	237/240 (99%)	225 (95%)	12 (5%)	26	48
All	All	655/668 (98%)	621 (95%)	34 (5%)	26	47

5 of 34 residues with a non-rotameric sidechain are listed below:

Mol	Chain	Res	Type
2	L	170	ASN
2	L	246	LEU
3	M	216	PHE
2	L	210	ASP
2	L	16	LEU

Some sidechains can be flipped to improve hydrogen bonding and reduce clashes. 5 of 8 such sidechains are listed below:

Mol	Chain	Res	Type
2	L	183	ASN
3	M	199	ASN
3	M	187	ASN
2	L	170	ASN
3	M	77	GLN

5.3.3 RNA [i](#)

There are no RNA molecules in this entry.

5.4 Non-standard residues in protein, DNA, RNA chains [i](#)

There are no non-standard protein/DNA/RNA residues in this entry.

5.5 Carbohydrates [i](#)

There are no carbohydrates in this entry.

5.6 Ligand geometry [i](#)

Of 29 ligands modelled in this entry, 1 is monoatomic - leaving 28 for Mogul analysis.

In the following table, the Counts columns list the number of bonds (or angles) for which Mogul statistics could be retrieved, the number of bonds (or angles) that are observed in the model and the number of bonds (or angles) that are defined in the Chemical Component Dictionary. The Link column lists molecule types, if any, to which the group is linked. The Z score for a bond length (or angle) is the number of standard deviations the observed value is removed from the expected value. A bond length (or angle) with $|Z| > 2$ is considered an outlier worth inspection. RMSZ is the root-mean-square of all Z scores of the bond lengths (or angles).

Mol	Type	Chain	Res	Link	Bond lengths			Bond angles		
					Counts	RMSZ	# $ Z > 2$	Counts	RMSZ	# $ Z > 2$
4	GOL	H	1251	-	5,5,5	0.56	0	5,5,5	0.62	0
4	GOL	H	1252	-	5,5,5	0.39	0	5,5,5	0.35	0
4	GOL	H	1253	-	5,5,5	0.36	0	5,5,5	0.29	0
4	GOL	H	1254	-	5,5,5	0.33	0	5,5,5	0.33	0
5	BCL	L	1282	2	56,74,74	2.18	6 (10%)	68,115,115	2.16	19 (27%)
6	LDA	L	1283	-	12,15,15	2.00	1 (8%)	14,17,17	0.46	0
7	BPH	L	1284	-	64,70,70	2.96	18 (28%)	74,101,101	1.75	14 (18%)
8	UQ2	L	1285[A]	-	23,23,23	2.59	8 (34%)	26,31,31	1.82	6 (23%)
8	UQ2	L	1285[B]	-	23,23,23	2.69	7 (30%)	26,31,31	1.12	1 (3%)
5	BCL	L	1286	2	56,74,74	2.10	6 (10%)	68,115,115	2.01	16 (23%)
9	PO4	L	1287	-	4,4,4	0.85	0	6,6,6	0.47	0
10	HTO	L	1288	-	9,9,9	0.39	0	10,10,10	0.81	0
4	GOL	L	1289	-	5,5,5	0.35	0	5,5,5	0.31	0
4	GOL	L	1290	-	5,5,5	0.36	0	5,5,5	0.28	0
6	LDA	L	1711	-	12,15,15	2.07	1 (8%)	14,17,17	0.57	0
5	BCL	M	1303	3	56,74,74	2.14	7 (12%)	68,115,115	1.96	17 (25%)
5	BCL	M	1304	3	56,74,74	2.12	6 (10%)	68,115,115	1.98	17 (25%)
6	LDA	M	1305	-	12,15,15	1.99	1 (8%)	14,17,17	0.62	0
6	LDA	M	1306	-	12,15,15	1.96	1 (8%)	14,17,17	0.56	0
6	LDA	M	1307	-	12,15,15	1.96	1 (8%)	14,17,17	0.66	0
6	LDA	M	1308	-	12,15,15	2.00	1 (8%)	14,17,17	0.45	0
6	LDA	M	1309	-	12,15,15	2.02	1 (8%)	14,17,17	0.52	0
6	LDA	M	1310	-	12,15,15	1.99	1 (8%)	14,17,17	0.46	0
6	LDA	M	1311	-	12,15,15	1.98	1 (8%)	14,17,17	0.46	0
7	BPH	M	1313	-	64,70,70	2.99	17 (26%)	74,101,101	1.84	14 (18%)
12	U10	M	1314	-	48,48,63	2.66	13 (27%)	56,61,79	1.59	15 (26%)
13	SPO	M	1315	-	40,41,41	4.13	12 (30%)	48,50,50	1.98	15 (31%)
14	CDL	M	1316	-	80,80,99	2.37	18 (22%)	86,92,111	3.78	16 (18%)

In the following table, the Chirals column lists the number of chiral outliers, the number of chiral centers analysed, the number of these observed in the model and the number defined in the

Chemical Component Dictionary. Similar counts are reported in the Torsion and Rings columns.
'-' means no outliers of that kind were identified.

Mol	Type	Chain	Res	Link	Chirals	Torsions	Rings
4	GOL	H	1251	-	-	2/4/4/4	-
4	GOL	H	1252	-	-	2/4/4/4	-
4	GOL	H	1253	-	-	2/4/4/4	-
4	GOL	H	1254	-	-	0/4/4/4	-
5	BCL	L	1282	2	2/2/21/25	12/37/137/137	-
6	LDA	L	1283	-	-	10/13/13/13	-
7	BPH	L	1284	-	-	11/54/105/105	0/5/6/6
8	UQ2	L	1285[A]	-	-	6/15/39/39	0/1/1/1
8	UQ2	L	1285[B]	-	-	9/15/39/39	0/1/1/1
5	BCL	L	1286	2	2/2/21/25	9/37/137/137	-
10	HTO	L	1288	-	-	8/10/10/10	-
4	GOL	L	1289	-	-	2/4/4/4	-
4	GOL	L	1290	-	-	4/4/4/4	-
6	LDA	L	1711	-	-	7/13/13/13	-
5	BCL	M	1303	3	2/2/21/25	17/37/137/137	-
5	BCL	M	1304	3	2/2/21/25	10/37/137/137	-
6	LDA	M	1305	-	-	6/13/13/13	-
6	LDA	M	1306	-	-	4/13/13/13	-
6	LDA	M	1307	-	-	4/13/13/13	-
6	LDA	M	1308	-	-	7/13/13/13	-
6	LDA	M	1309	-	-	9/13/13/13	-
6	LDA	M	1310	-	-	6/13/13/13	-
6	LDA	M	1311	-	-	7/13/13/13	-
7	BPH	M	1313	-	-	23/54/105/105	0/5/6/6
12	U10	M	1314	-	-	7/45/69/87	0/1/1/1
13	SPO	M	1315	-	-	18/47/47/47	-
14	CDL	M	1316	-	-	39/91/91/110	-

The worst 5 of 127 bond length outliers are listed below:

Mol	Chain	Res	Type	Atoms	Z	Observed(Å)	Ideal(Å)
5	L	1282	BCL	OBD-CAD	13.47	1.41	1.22
5	L	1286	BCL	OBD-CAD	13.00	1.40	1.22
7	M	1313	BPH	OBD-CAD	12.97	1.40	1.22
13	M	1315	SPO	C27-C28	12.91	1.47	1.34

Continued on next page...

Continued from previous page...

Mol	Chain	Res	Type	Atoms	Z	Observed(Å)	Ideal(Å)
5	M	1304	BCL	OBD-CAD	12.89	1.40	1.22

The worst 5 of 150 bond angle outliers are listed below:

Mol	Chain	Res	Type	Atoms	Z	Observed(°)	Ideal(°)
14	M	1316	CDL	C33-C32-C31	17.82	177.43	113.20
14	M	1316	CDL	C12-C11-CA5	13.24	161.41	113.62
14	M	1316	CDL	C17-C16-C15	11.61	174.41	114.44
14	M	1316	CDL	C20-C19-C18	11.34	173.01	114.44
14	M	1316	CDL	C13-C12-C11	10.85	152.29	113.20

5 of 8 chirality outliers are listed below:

Mol	Chain	Res	Type	Atom
5	M	1303	BCL	C8
5	M	1303	BCL	C13
5	M	1304	BCL	C8
5	M	1304	BCL	C13
5	L	1286	BCL	C8

5 of 241 torsion outliers are listed below:

Mol	Chain	Res	Type	Atoms
4	L	1290	GOL	O1-C1-C2-C3
4	L	1290	GOL	C1-C2-C3-O3
4	L	1290	GOL	O2-C2-C3-O3
4	L	1289	GOL	C1-C2-C3-O3
8	L	1285[A]	UQ2	C7-C8-C9-C10

There are no ring outliers.

17 monomers are involved in 62 short contacts:

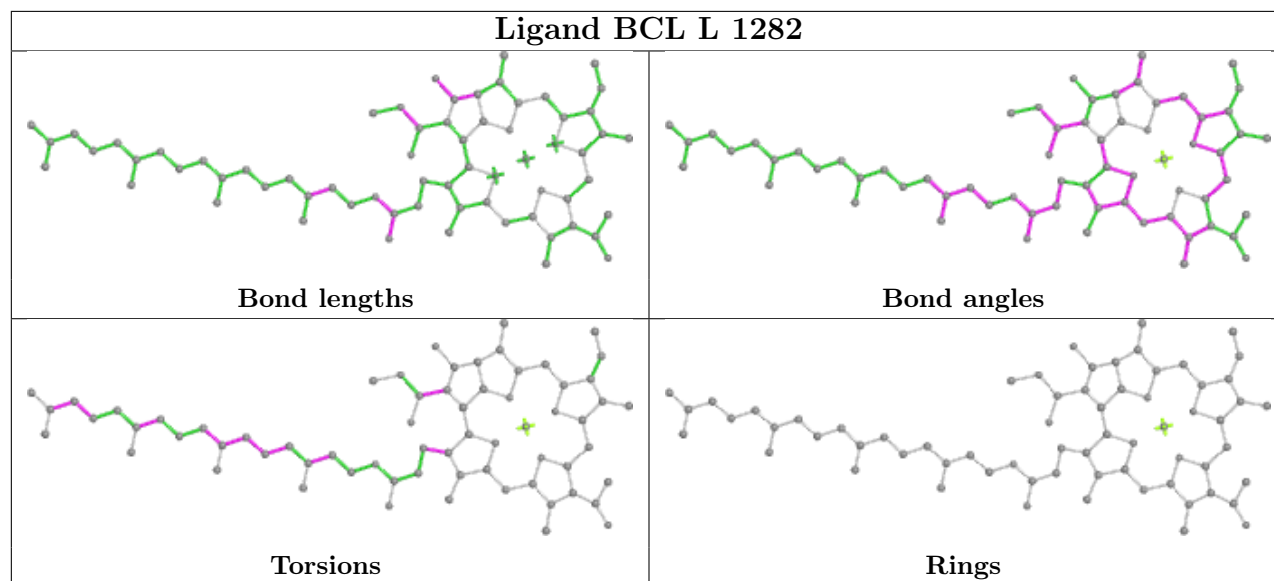
Mol	Chain	Res	Type	Clashes	Symm-Clashes
4	H	1251	GOL	1	0
5	L	1282	BCL	5	0
7	L	1284	BPH	9	0
8	L	1285[A]	UQ2	6	0
8	L	1285[B]	UQ2	2	0
5	L	1286	BCL	4	0
10	L	1288	HTO	2	0
4	L	1289	GOL	1	0

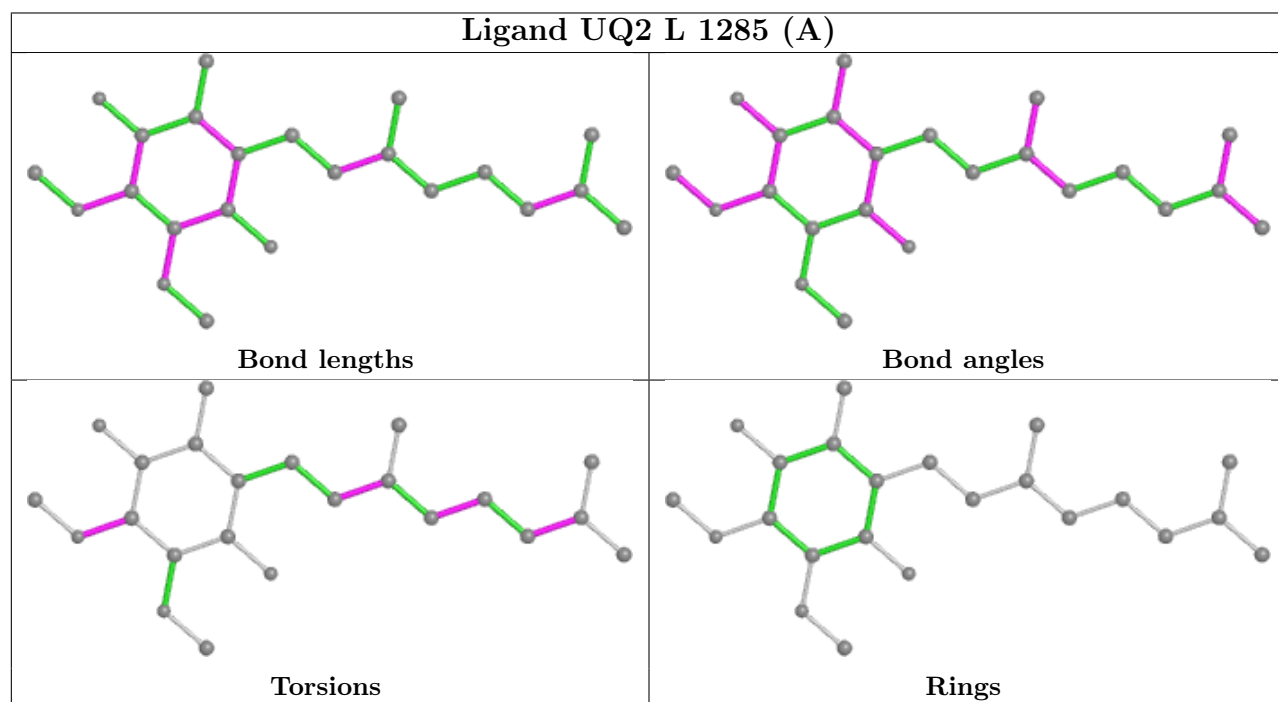
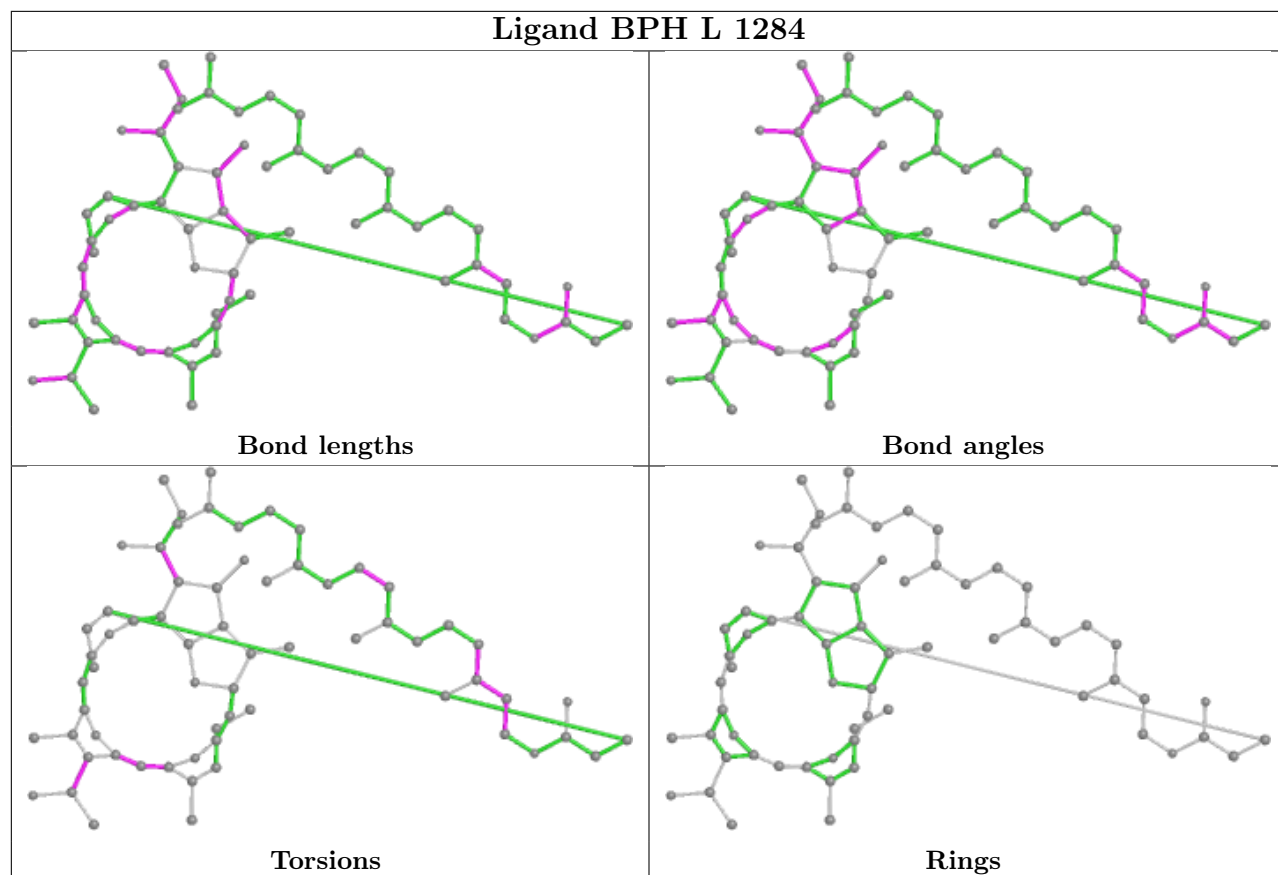
Continued on next page...

Continued from previous page...

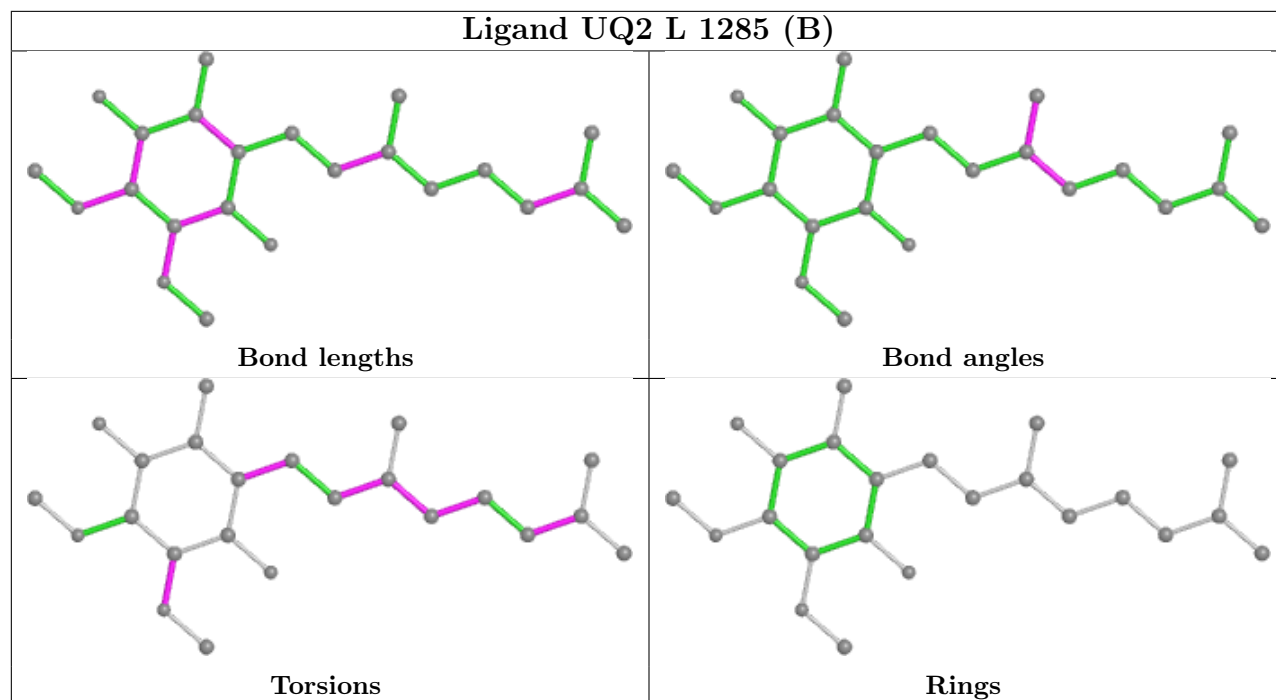
Mol	Chain	Res	Type	Clashes	Symm-Clashes
6	L	1711	LDA	2	0
5	M	1303	BCL	7	0
5	M	1304	BCL	12	0
6	M	1307	LDA	1	0
6	M	1308	LDA	1	0
7	M	1313	BPH	14	0
12	M	1314	U10	2	0
13	M	1315	SPO	3	0
14	M	1316	CDL	3	0

The following is a two-dimensional graphical depiction of Mogul quality analysis of bond lengths, bond angles, torsion angles, and ring geometry for all instances of the Ligand of Interest. In addition, ligands with molecular weight > 250 and outliers as shown on the validation Tables will also be included. For torsion angles, if less than 5% of the Mogul distribution of torsion angles is within 10 degrees of the torsion angle in question, then that torsion angle is considered an outlier. Any bond that is central to one or more torsion angles identified as an outlier by Mogul will be highlighted in the graph. For rings, the root-mean-square deviation (RMSD) between the ring in question and similar rings identified by Mogul is calculated over all ring torsion angles. If the average RMSD is greater than 60 degrees and the minimal RMSD between the ring in question and any Mogul-identified rings is also greater than 60 degrees, then that ring is considered an outlier. The outliers are highlighted in purple. The color gray indicates Mogul did not find sufficient equivalents in the CSD to analyse the geometry.

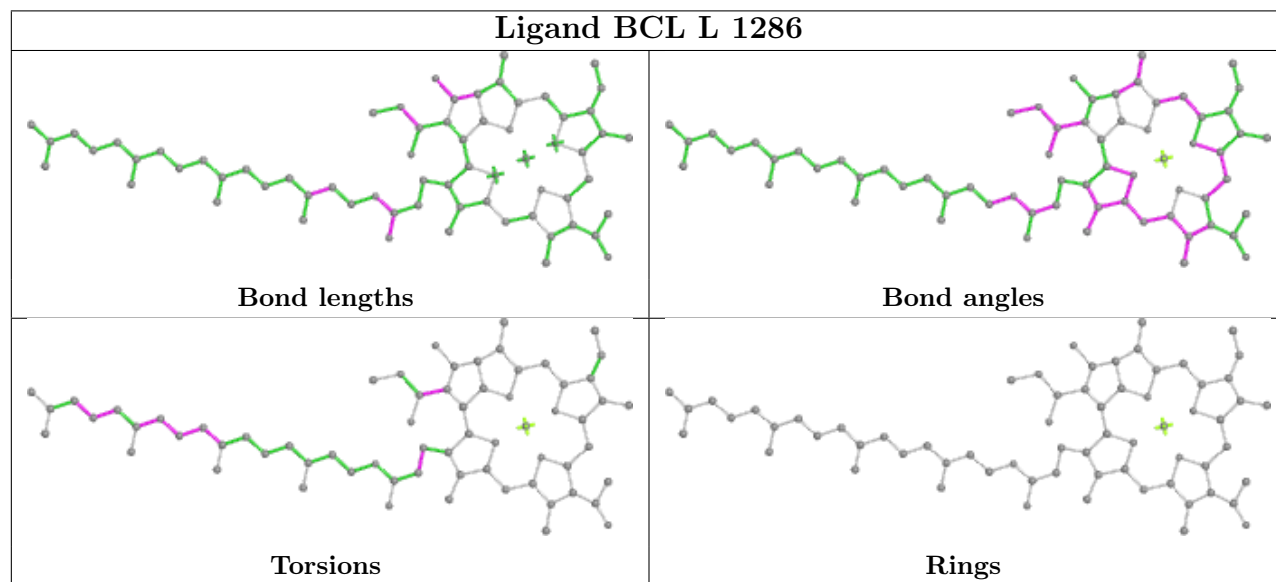


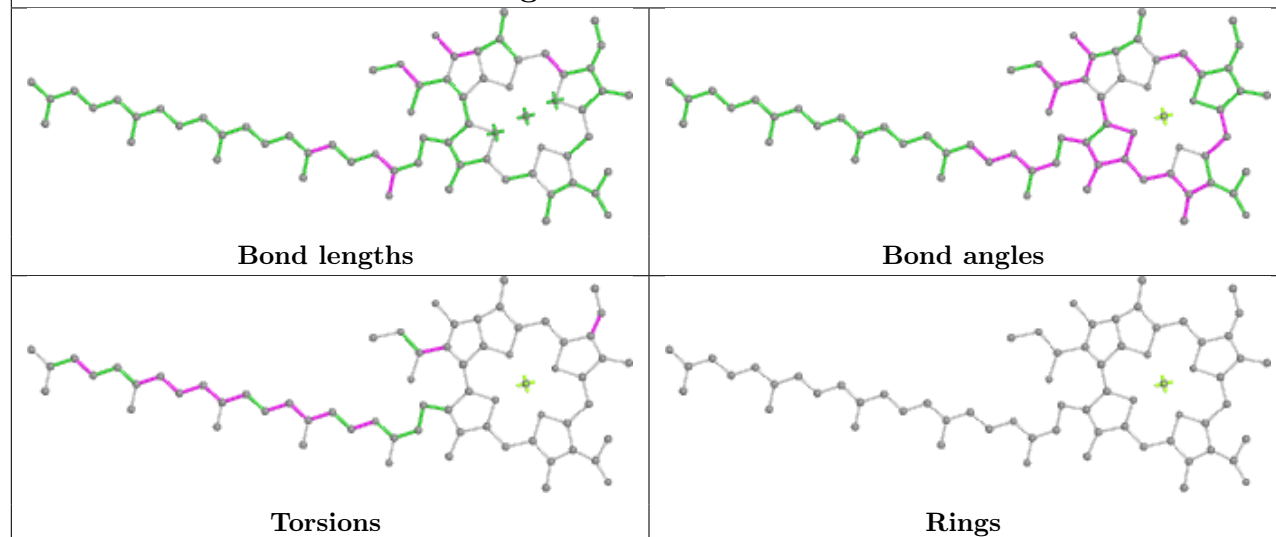
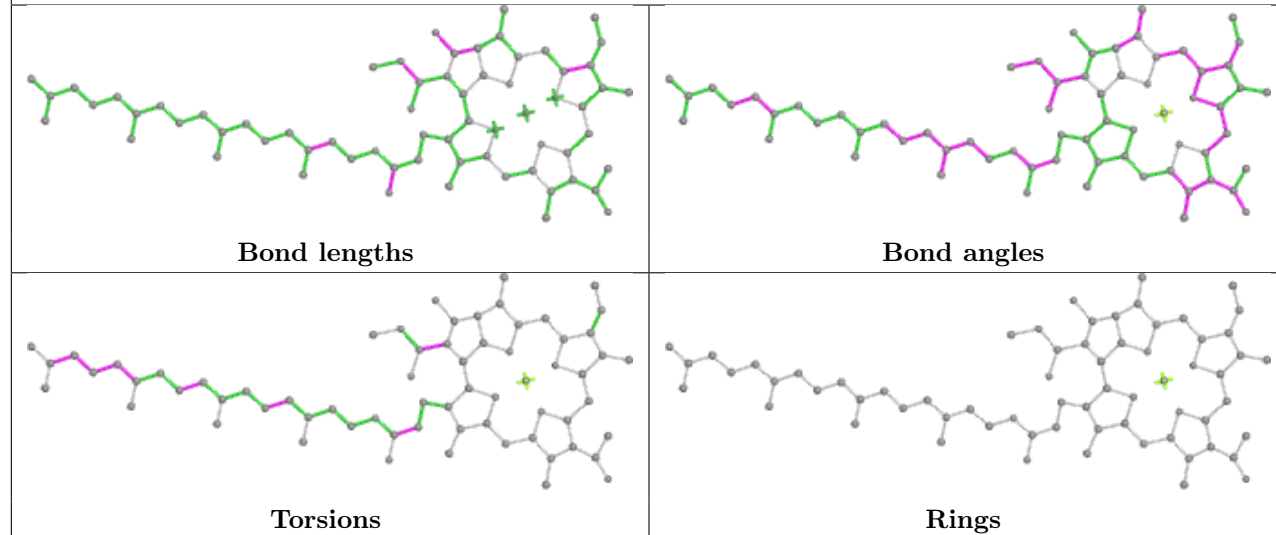


Ligand UQ2 L 1285 (B)

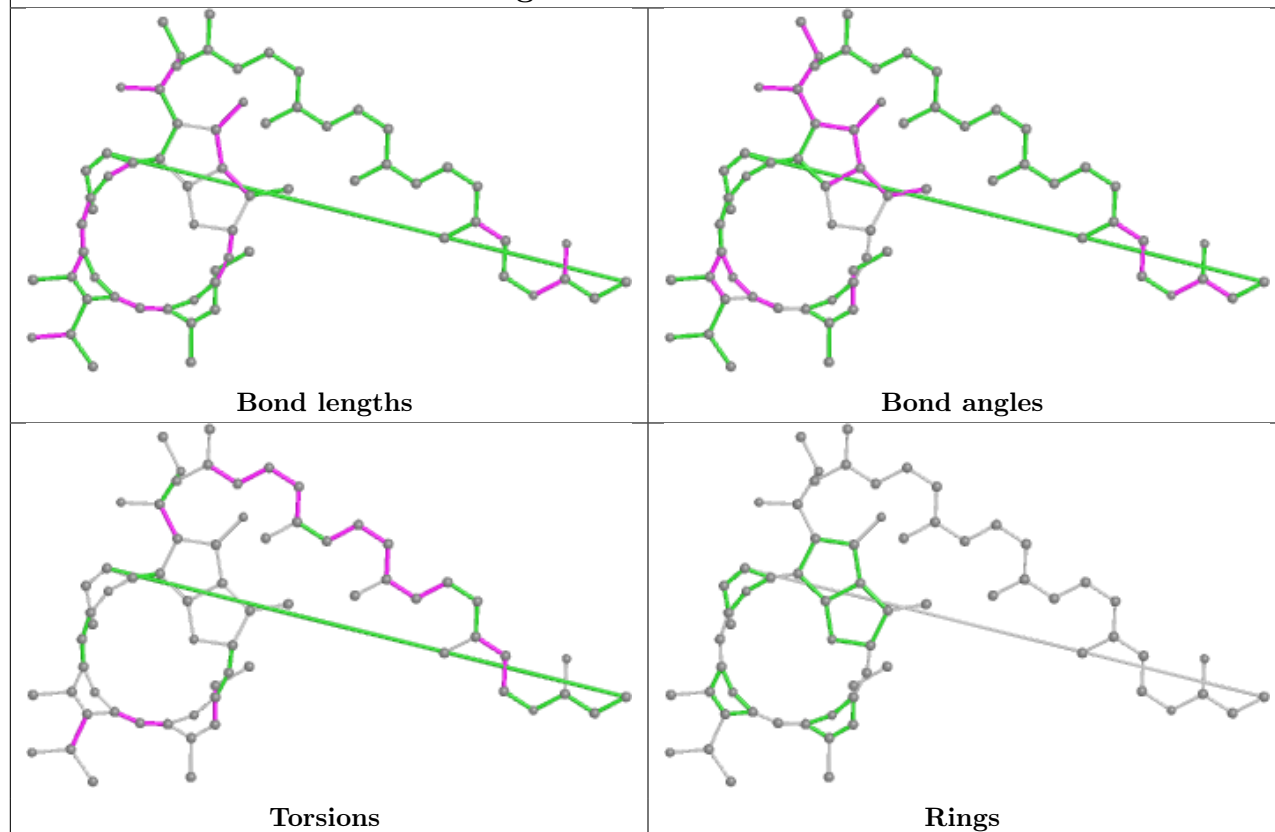


Ligand BCL L 1286

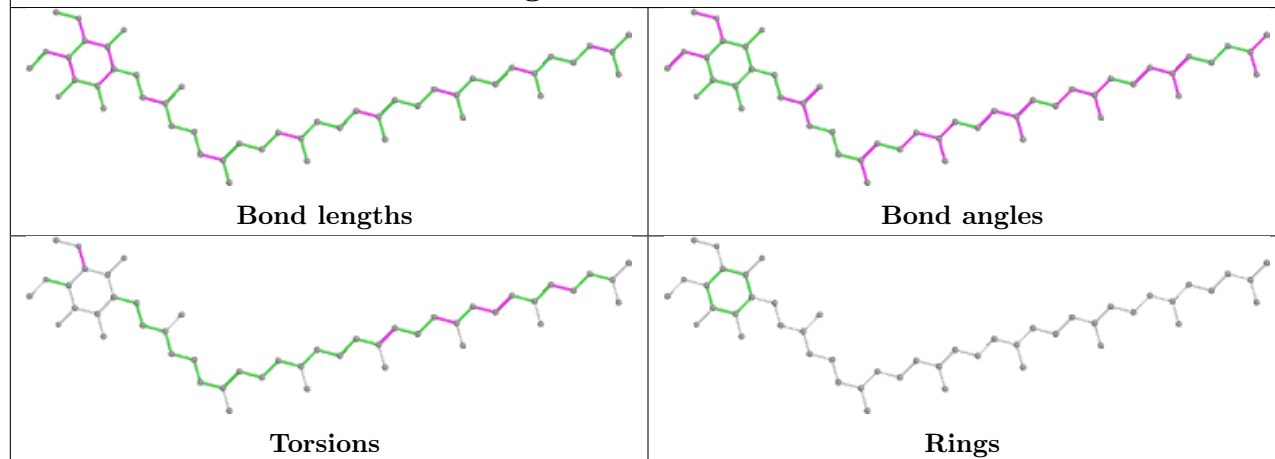


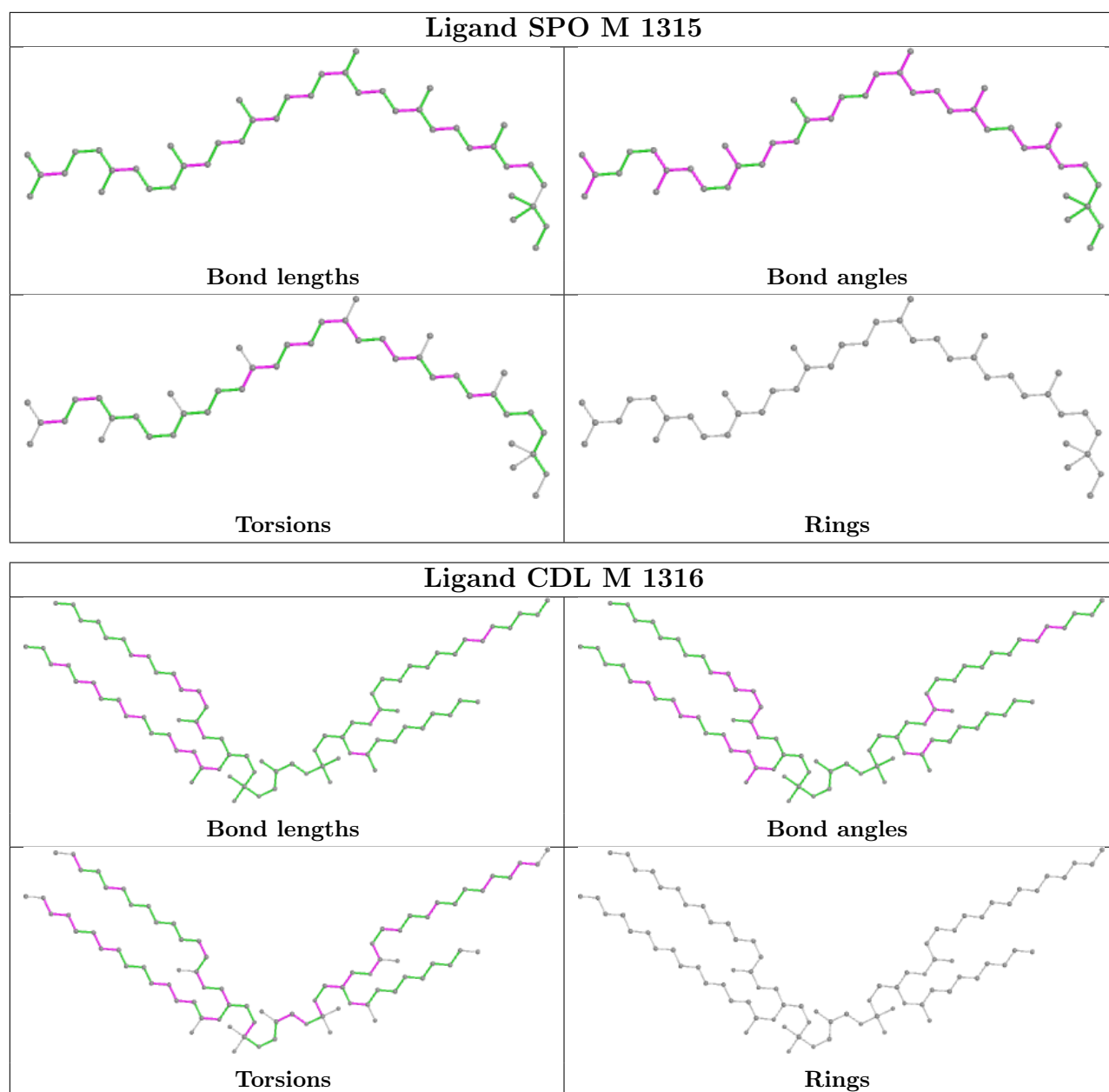
Ligand BCL M 1303**Ligand BCL M 1304**

Ligand BPH M 1313



Ligand U10 M 1314





5.7 Other polymers [i](#)

There are no such residues in this entry.

5.8 Polymer linkage issues [i](#)

There are no chain breaks in this entry.

6 Fit of model and data [i](#)

6.1 Protein, DNA and RNA chains [i](#)

In the following table, the column labelled ‘#RSRZ > 2’ contains the number (and percentage) of RSRZ outliers, followed by percent RSRZ outliers for the chain as percentile scores relative to all X-ray entries and entries of similar resolution. The OWAB column contains the minimum, median, 95th percentile and maximum values of the occupancy-weighted average B-factor per residue. The column labelled ‘Q < 0.9’ lists the number of (and percentage) of residues with an average occupancy less than 0.9.

Mol	Chain	Analysed	<RSRZ>	#RSRZ > 2			OWAB(Å ²)	Q < 0.9
1	H	241/260 (92%)	-0.26	8 (3%)	46	50	38, 48, 61, 105	0
2	L	281/281 (100%)	-0.31	8 (2%)	53	56	35, 44, 69, 77	0
3	M	303/307 (98%)	-0.02	13 (4%)	35	38	33, 50, 73, 86	0
All	All	825/848 (97%)	-0.19	29 (3%)	44	47	33, 47, 72, 105	0

The worst 5 of 29 RSRZ outliers are listed below:

Mol	Chain	Res	Type	RSRZ
3	M	1	ALA	7.1
1	H	250	SER	6.2
1	H	249	LYS	5.5
3	M	303	MET	5.1
1	H	246	PRO	4.2

6.2 Non-standard residues in protein, DNA, RNA chains [i](#)

There are no non-standard protein/DNA/RNA residues in this entry.

6.3 Carbohydrates [i](#)

There are no carbohydrates in this entry.

6.4 Ligands [i](#)

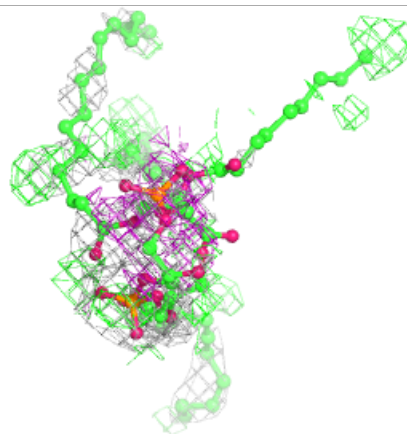
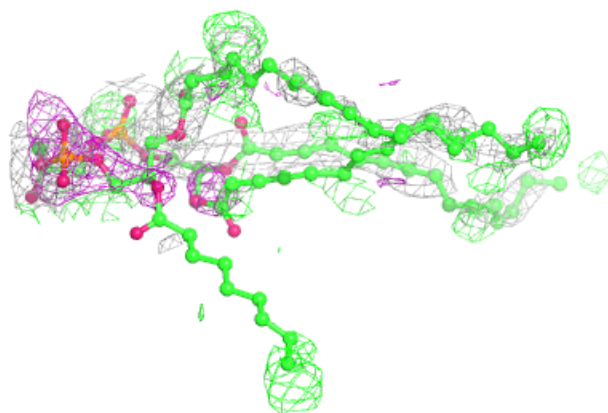
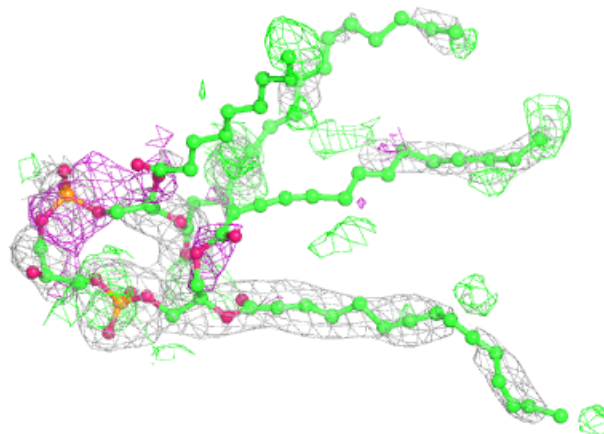
In the following table, the Atoms column lists the number of modelled atoms in the group and the number defined in the chemical component dictionary. The B-factors column lists the minimum, median, 95th percentile and maximum values of B factors of atoms in the group. The column labelled ‘Q < 0.9’ lists the number of atoms with occupancy less than 0.9.

Mol	Type	Chain	Res	Atoms	RSCC	RSR	B-factors(\AA^2)	Q<0.9
6	LDA	M	1311	16/16	0.08	0.62	115,118,122,122	0
6	LDA	M	1310	16/16	0.24	0.63	101,111,118,118	0
6	LDA	L	1711	16/16	0.51	0.47	108,112,117,117	0
6	LDA	M	1309	16/16	0.56	0.50	118,120,126,126	0
4	GOL	H	1253	6/6	0.59	0.36	103,104,106,106	0
6	LDA	L	1283	16/16	0.64	0.37	78,103,114,115	0
6	LDA	M	1308	16/16	0.67	0.36	96,99,107,108	0
14	CDL	M	1316	81/100	0.67	0.45	91,107,125,126	0
4	GOL	H	1252	6/6	0.77	0.32	93,94,94,95	0
10	HTO	L	1288	10/10	0.77	0.45	83,85,85,86	0
4	GOL	L	1290	6/6	0.79	0.37	98,99,99,100	0
6	LDA	M	1305	16/16	0.80	0.31	70,80,85,85	0
4	GOL	H	1251	6/6	0.80	0.31	70,75,76,76	0
4	GOL	H	1254	6/6	0.85	0.22	92,93,93,93	0
8	UQ2	L	1285[B]	23/23	0.86	0.32	42,47,53,54	23
8	UQ2	L	1285[A]	23/23	0.86	0.32	38,44,54,55	23
6	LDA	M	1307	16/16	0.87	0.21	68,70,76,77	0
6	LDA	M	1306	16/16	0.87	0.42	70,74,86,87	0
4	GOL	L	1289	6/6	0.88	0.25	65,69,70,73	0
12	U10	M	1314	48/63	0.89	0.26	36,47,75,78	0
13	SPO	M	1315	42/42	0.89	0.21	44,57,77,80	0
7	BPH	M	1313	65/65	0.92	0.21	38,45,98,99	0
5	BCL	L	1286	66/66	0.97	0.12	30,38,51,56	0
9	PO4	L	1287	5/5	0.97	0.12	100,100,101,101	0
5	BCL	L	1282	66/66	0.97	0.14	29,35,58,61	0
5	BCL	M	1304	66/66	0.98	0.17	30,36,58,65	0
5	BCL	M	1303	66/66	0.98	0.15	30,36,89,90	0
7	BPH	L	1284	65/65	0.98	0.14	29,36,45,48	0
11	FE	M	1312	1/1	0.99	0.09	34,34,34,34	0

The following is a graphical depiction of the model fit to experimental electron density of all instances of the Ligand of Interest. In addition, ligands with molecular weight > 250 and outliers as shown on the geometry validation Tables will also be included. Each fit is shown from different orientation to approximate a three-dimensional view.

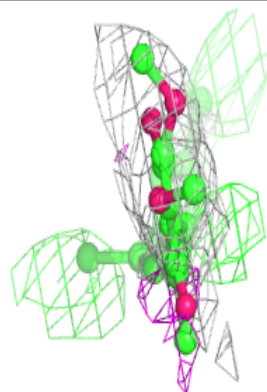
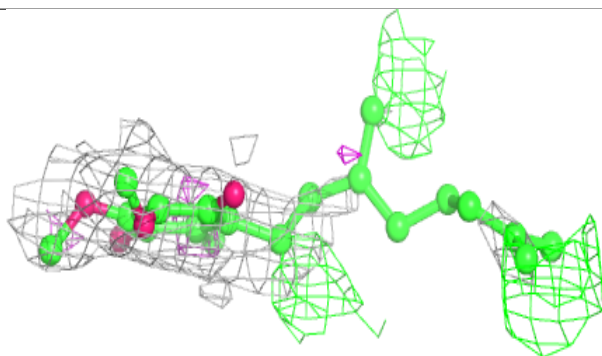
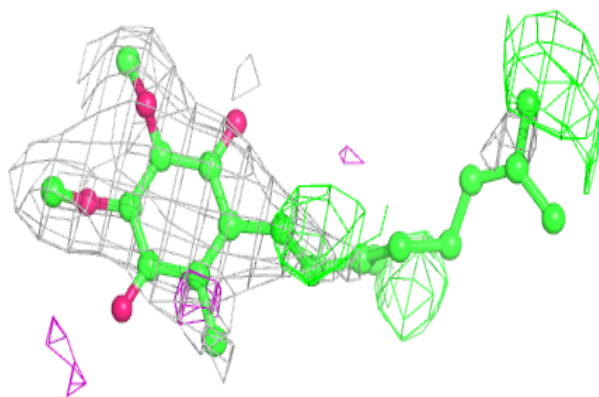
Electron density around CDL M 1316:

$2mF_o-DF_c$ (at 0.7 rmsd) in gray
 mF_o-DF_c (at 3 rmsd) in purple (negative)
and green (positive)

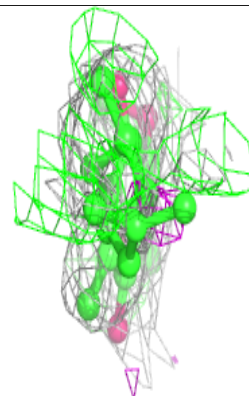
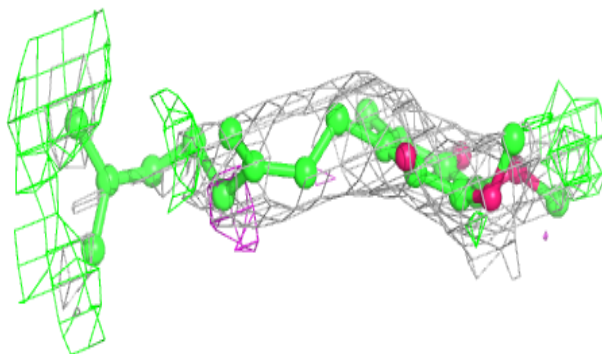
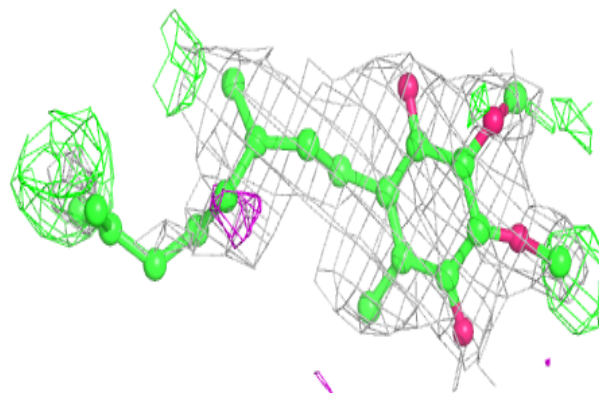


Electron density around UQ2 L 1285 (B):

$2mF_o-DF_c$ (at 0.7 rmsd) in gray
 mF_o-DF_c (at 3 rmsd) in purple (negative)
and green (positive)

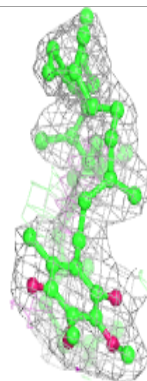
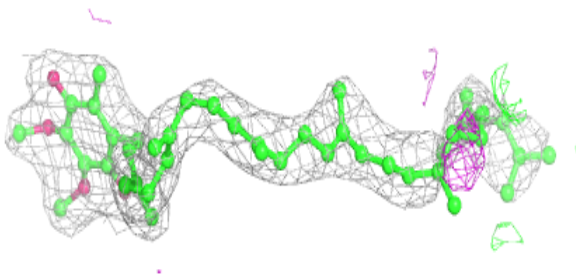
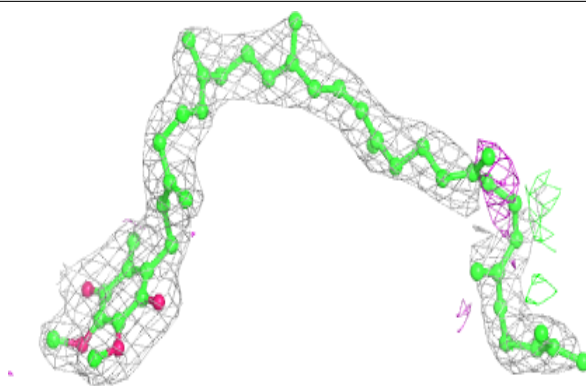
**Electron density around UQ2 L 1285 (A):**

$2mF_o-DF_c$ (at 0.7 rmsd) in gray
 mF_o-DF_c (at 3 rmsd) in purple (negative)
and green (positive)

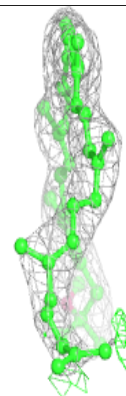
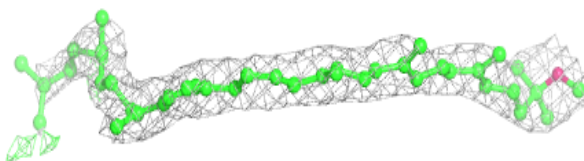
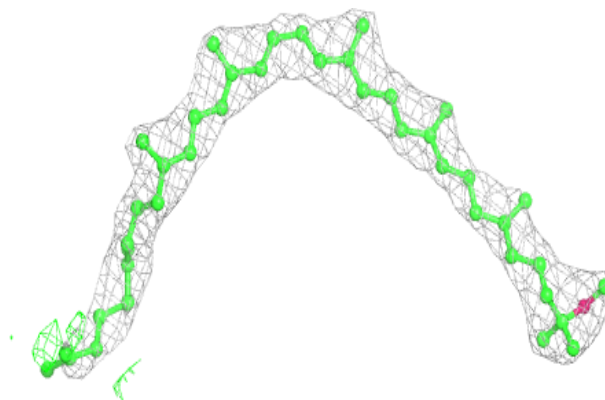


Electron density around U10 M 1314:

$2mF_o-DF_c$ (at 0.7 rmsd) in gray
 mF_o-DF_c (at 3 rmsd) in purple (negative)
and green (positive)

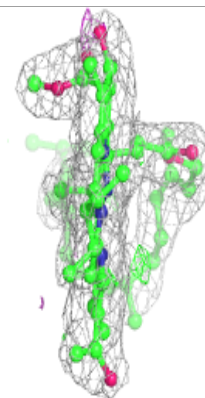
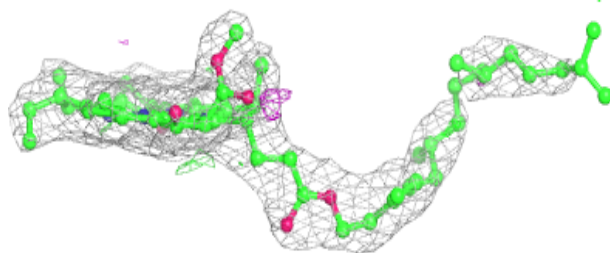
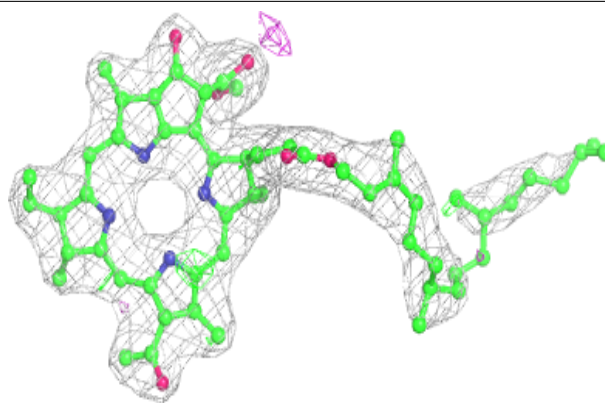
**Electron density around SPO M 1315:**

$2mF_o-DF_c$ (at 0.7 rmsd) in gray
 mF_o-DF_c (at 3 rmsd) in purple (negative)
and green (positive)

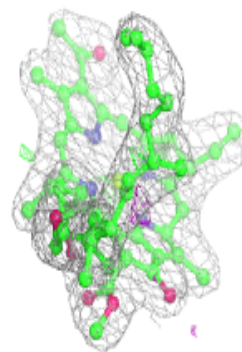
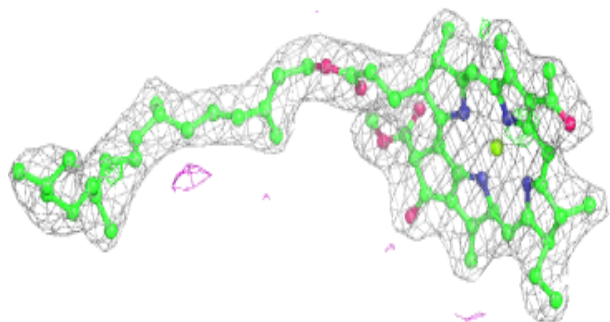
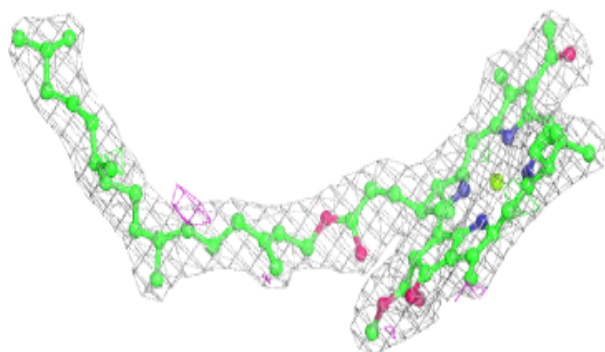


Electron density around BPH M 1313:

$2mF_o-DF_c$ (at 0.7 rmsd) in gray
 mF_o-DF_c (at 3 rmsd) in purple (negative)
and green (positive)

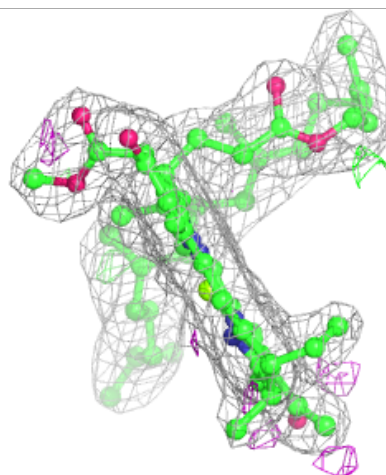
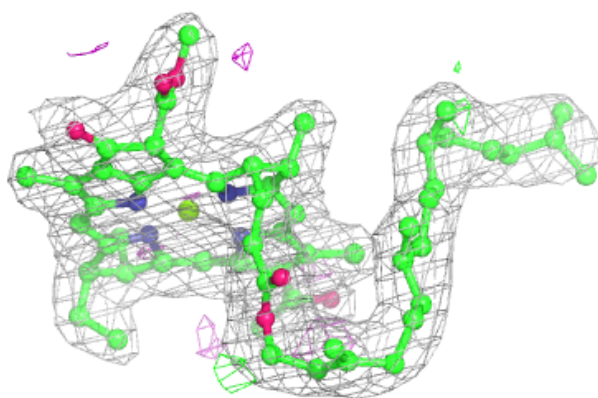
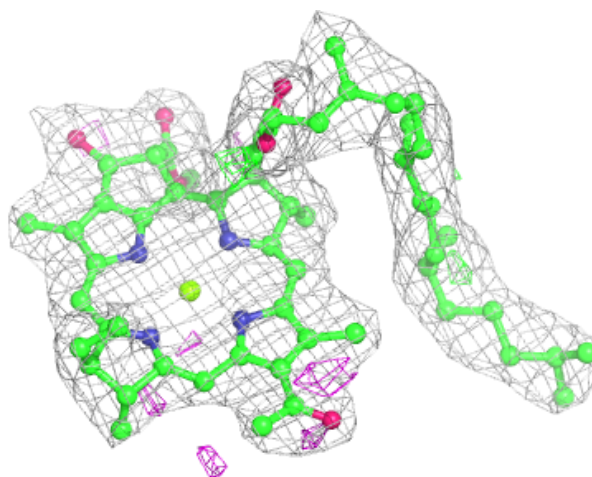
**Electron density around BCL L 1286:**

$2mF_o-DF_c$ (at 0.7 rmsd) in gray
 mF_o-DF_c (at 3 rmsd) in purple (negative)
and green (positive)



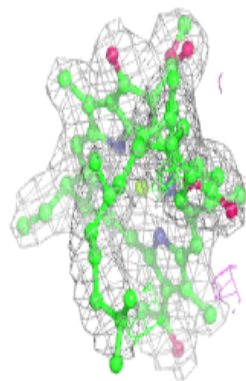
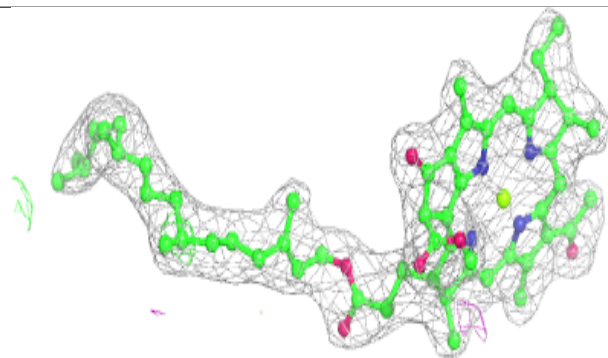
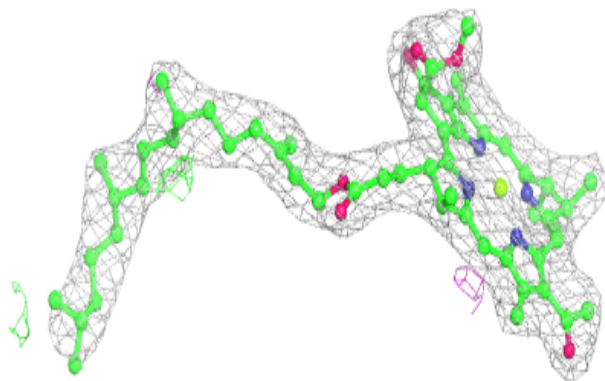
Electron density around BCL L 1282:

$2mF_o-DF_c$ (at 0.7 rmsd) in gray
 mF_o-DF_c (at 3 rmsd) in purple (negative)
and green (positive)



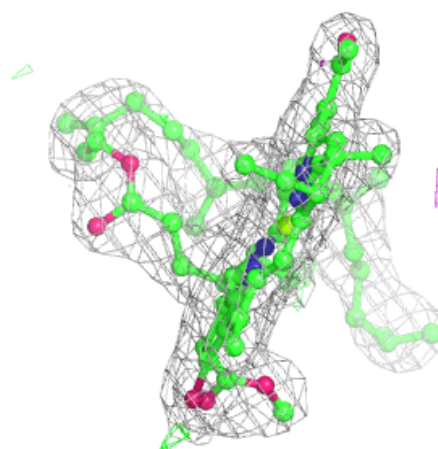
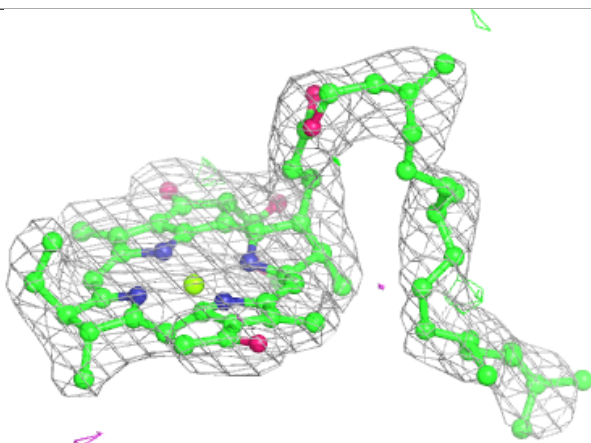
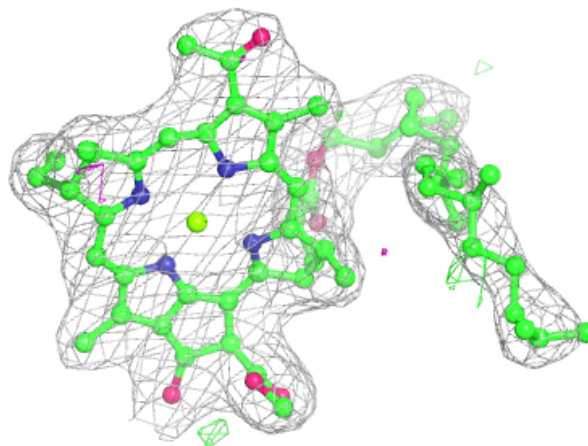
Electron density around BCL M 1304:

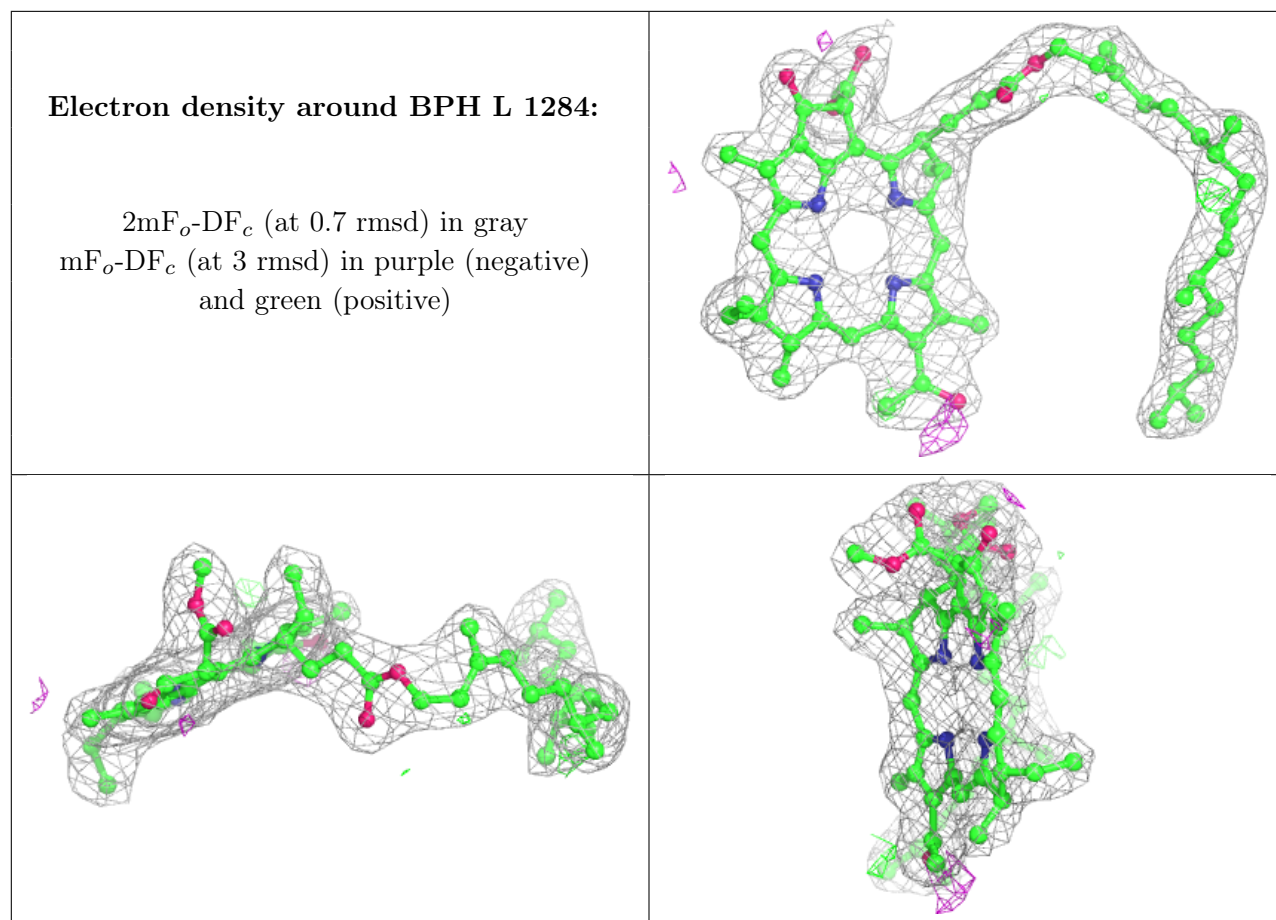
$2mF_o-DF_c$ (at 0.7 rmsd) in gray
 mF_o-DF_c (at 3 rmsd) in purple (negative)
and green (positive)



Electron density around BCL M 1303:

$2mF_o-DF_c$ (at 0.7 rmsd) in gray
 mF_o-DF_c (at 3 rmsd) in purple (negative)
and green (positive)





6.5 Other polymers [i](#)

There are no such residues in this entry.