



wwPDB X-ray Structure Validation Summary Report ⓘ

Mar 14, 2018 – 12:45 pm GMT

PDB ID : 2UXL
Title : X-ray high resolution structure of the photosynthetic reaction center from Rb. sphaeroides at pH 10 in the neutral state, 2nd dataset
Authors : Koepke, J.; Diehm, R.; Fritzsche, G.
Deposited on : 2007-03-28
Resolution : 2.88 Å(reported)

This is a wwPDB X-ray Structure Validation Summary Report for a publicly released PDB entry.

We welcome your comments at validation@mail.wwpdb.org

A user guide is available at

<https://www.wwpdb.org/validation/2017/XrayValidationReportHelp>

with specific help available everywhere you see the ⓘ symbol.

The following versions of software and data (see [references ⓘ](#)) were used in the production of this report:

MolProbity : 4.02b-467
Mogul : 1.7.3 (157068), CSD as539be (2018)
Xtriage (Phenix) : 1.13
EDS : trunk31020
Percentile statistics : 20171227.v01 (using entries in the PDB archive December 27th 2017)
Refmac : 5.8.0158
CCP4 : 7.0 (Gargrove)
Ideal geometry (proteins) : Engh & Huber (2001)
Ideal geometry (DNA, RNA) : Parkinson et al. (1996)
Validation Pipeline (wwPDB-VP) : trunk31020

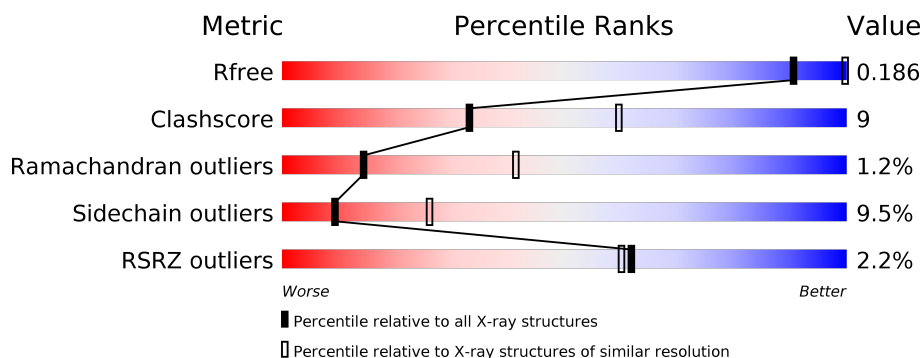
1 Overall quality at a glance

The following experimental techniques were used to determine the structure:

X-RAY DIFFRACTION

The reported resolution of this entry is 2.88 Å.

Percentile scores (ranging between 0-100) for global validation metrics of the entry are shown in the following graphic. The table shows the number of entries on which the scores are based.



Metric	Whole archive (#Entries)	Similar resolution (#Entries, resolution range(Å))
R_{free}	111664	2330 (2.90-2.86)
Clashscore	122126	2579 (2.90-2.86)
Ramachandran outliers	120053	2524 (2.90-2.86)
Sidechain outliers	120020	2527 (2.90-2.86)
RSRZ outliers	108989	2272 (2.90-2.86)

The table below summarises the geometric issues observed across the polymeric chains and their fit to the electron density. The red, orange, yellow and green segments on the lower bar indicate the fraction of residues that contain outliers for ≥ 3 , 2, 1 and 0 types of geometric quality criteria. A grey segment represents the fraction of residues that are not modelled. The numeric value for each fraction is indicated below the corresponding segment, with a dot representing fractions $\leq 5\%$. The upper red bar (where present) indicates the fraction of residues that have poor fit to the electron density. The numeric value is given above the bar.

Mol	Chain	Length	Quality of chain
1	H	260	<div> <div>2%</div> <div> <div></div> <div>70%</div> <div>19%</div> <div>• 7%</div> </div> </div>
2	L	281	<div> <div>2%</div> <div> <div></div> <div>81%</div> <div>16%</div> <div>•</div> </div> </div>
3	M	307	<div> <div>3%</div> <div> <div></div> <div>75%</div> <div>20%</div> <div>• •</div> </div> </div>

The following table lists non-polymeric compounds, carbohydrate monomers and non-standard residues in protein, DNA, RNA chains that are outliers for geometric or electron-density-fit criteria:

Mol	Type	Chain	Res	Chirality	Geometry	Clashes	Electron density
4	GOL	H	1253	-	-	-	X
5	BCL	L	1282	X	-	-	-
5	BCL	L	1285	X	-	-	-
5	BCL	M	1303	X	-	-	-
5	BCL	M	1304	X	-	-	-
7	UQ2	L	1284[B]	-	-	X	-

2 Entry composition [i](#)

There are 13 unique types of molecules in this entry. The entry contains 7302 atoms, of which 0 are hydrogens and 0 are deuteriums.

In the tables below, the ZeroOcc column contains the number of atoms modelled with zero occupancy, the AltConf column contains the number of residues with at least one atom in alternate conformation and the Trace column contains the number of residues modelled with at most 2 atoms.

- Molecule 1 is a protein called REACTION CENTER PROTEIN H CHAIN.

Mol	Chain	Residues	Atoms					ZeroOcc	AltConf	Trace
1	H	241	Total	C	N	O	S	0	3	1
			1846	1181	319	337	9			

- Molecule 2 is a protein called REACTION CENTER PROTEIN L CHAIN.

Mol	Chain	Residues	Atoms					ZeroOcc	AltConf	Trace
2	L	281	Total	C	N	O	S	0	0	0
			2232	1507	355	362	8			

- Molecule 3 is a protein called REACTION CENTER PROTEIN M CHAIN.

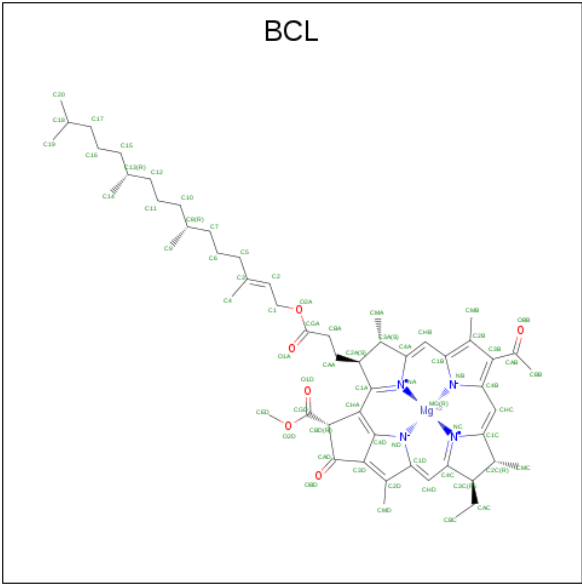
Mol	Chain	Residues	Atoms					ZeroOcc	AltConf	Trace
3	M	303	Total	C	N	O	S	0	0	1
			2409	1607	395	397	10			

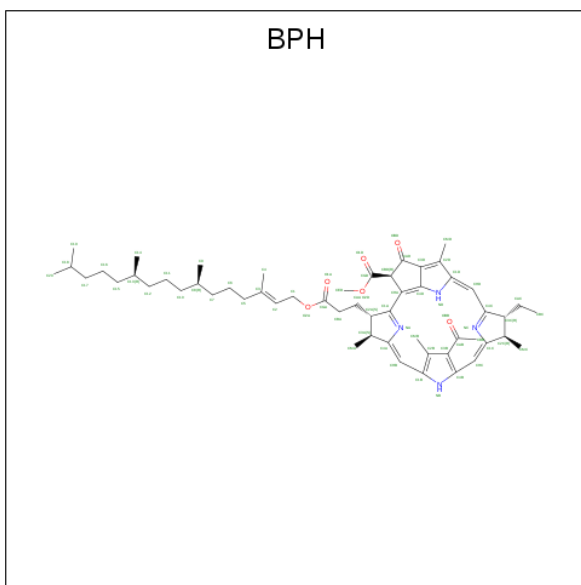
- Molecule 4 is GLYCEROL (three-letter code: GOL) (formula: C₃H₈O₃).



Mol	Chain	Residues	Atoms			ZeroOcc	AltConf
4	H	1	Total	C	O	0	0
			6	3	3		
4	H	1	Total	C	O	0	0
			6	3	3		
4	H	1	Total	C	O	0	0
			6	3	3		
4	L	1	Total	C	O	0	0
			6	3	3		

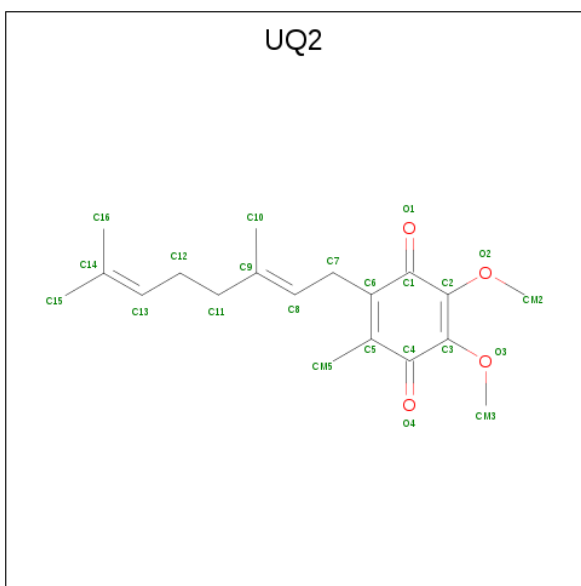
- Molecule 5 is BACTERIOCHLOROPHYLL A (three-letter code: BCL) (formula: C₅₅H₇₄MgN₄O₆).





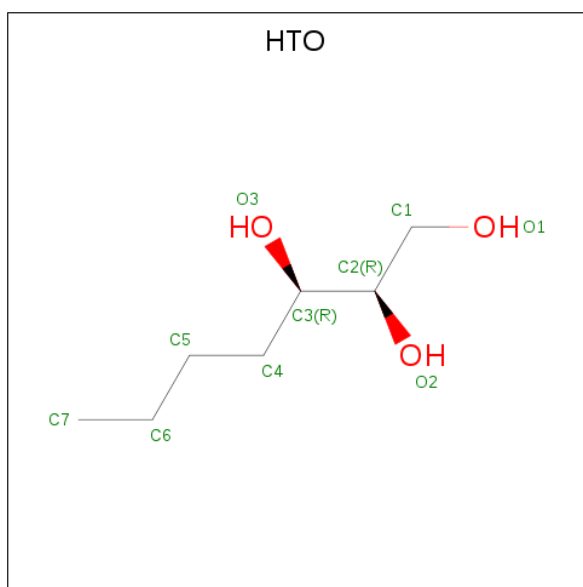
Mol	Chain	Residues	Atoms				ZeroOcc	AltConf
6	L	1	Total	C	N	O	0	0
			65	55	4	6		
6	M	1	Total	C	N	O	0	0
			65	55	4	6		

- Molecule 7 is UBIQUINONE-2 (three-letter code: UQ2) (formula: $C_{19}H_{26}O_4$).



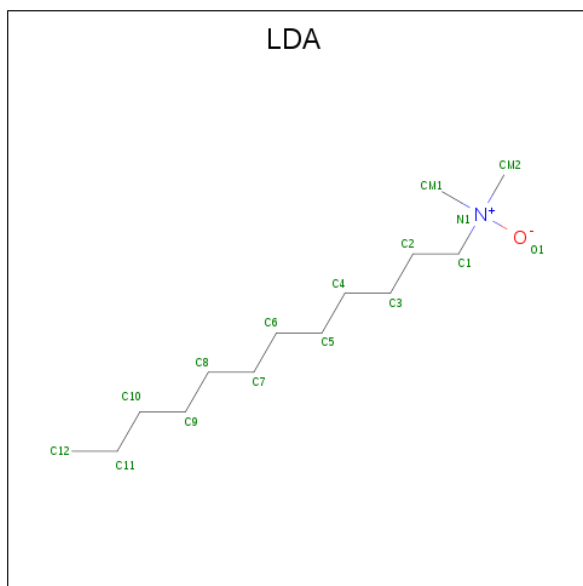
Mol	Chain	Residues	Atoms			ZeroOcc	AltConf
7	L	1	Total	C	O	0	1
			46	38	8		

- Molecule 8 is HEPTANE-1,2,3-TRIOL (three-letter code: HTO) (formula: $C_7H_{16}O_3$).



Mol	Chain	Residues	Atoms			ZeroOcc	AltConf
8	L	1	Total	C	O	0	0
			10	7	3		

- Molecule 9 is LAURYL DIMETHYLAMINE-N-OXIDE (three-letter code: LDA) (formula: $C_{14}H_{31}NO$).



Mol	Chain	Residues	Atoms				ZeroOcc	AltConf
9	M	1	Total	C	N	O	0	0
			16	14	1	1		
9	M	1	Total	C	N	O	0	0
			16	14	1	1		

Continued on next page...

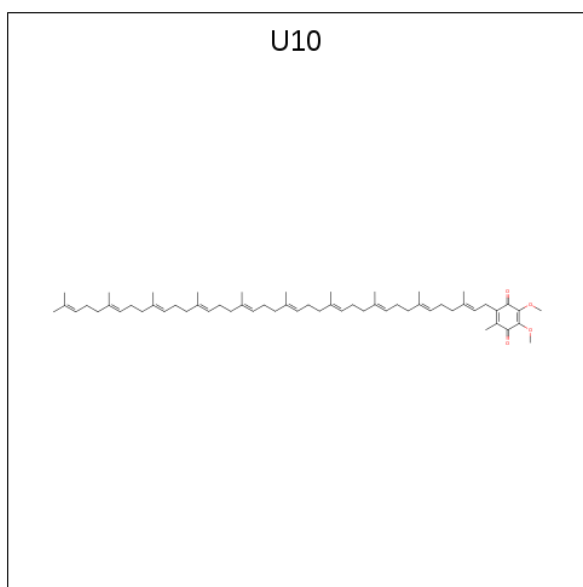
Continued from previous page...

Mol	Chain	Residues	Atoms				ZeroOcc	AltConf
9	M	1	Total	C	N	O	0	0
			16	14	1	1		

- Molecule 10 is FE (III) ION (three-letter code: FE) (formula: Fe).

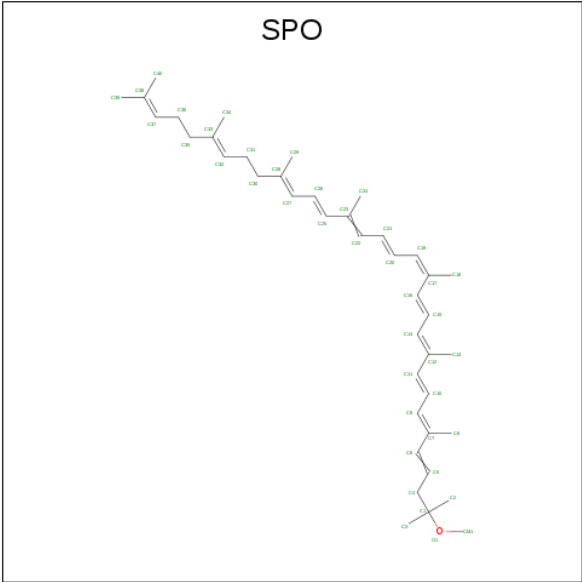
Mol	Chain	Residues	Atoms		ZeroOcc	AltConf
10	M	1	Total	Fe	0	0
			1	1		

- Molecule 11 is UBIQUINONE-10 (three-letter code: U10) (formula: C₅₉H₉₀O₄).



Mol	Chain	Residues	Atoms			ZeroOcc	AltConf
11	M	1	Total	C	O	0	0
			48	44	4		

- Molecule 12 is SPHEROIDENE (three-letter code: SPO) (formula: C₄₁H₆₀O).



Mol	Chain	Residues	Atoms			ZeroOcc	AltConf
12	M	1	Total	C	O	0	0
			42	41	1		

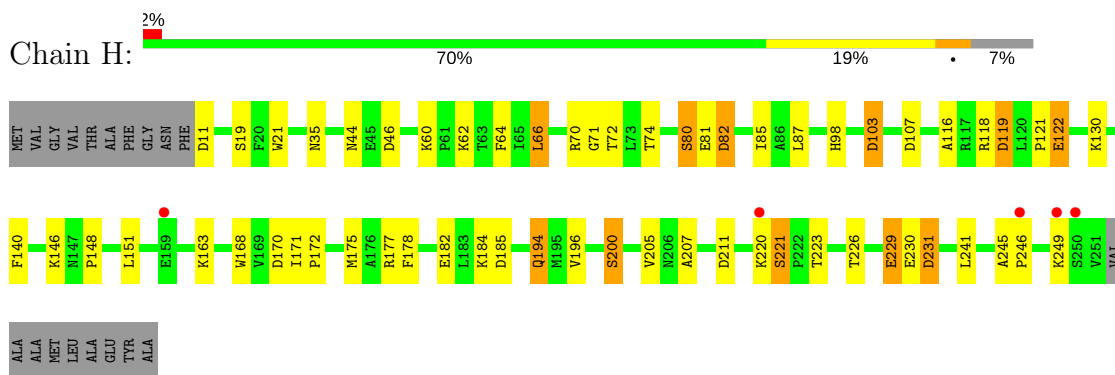
- Molecule 13 is water.

Mol	Chain	Residues	Atoms		ZeroOcc	AltConf
13	H	76	Total	O	0	0
			76	76		
13	L	68	Total	O	0	0
			68	68		
13	M	58	Total	O	0	0
			58	58		

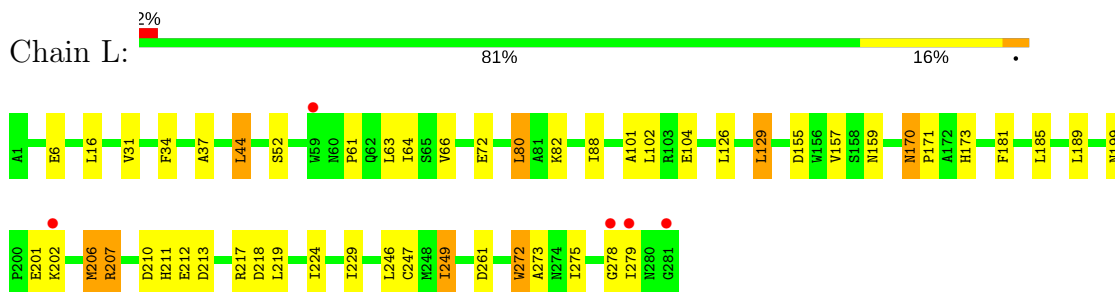
3 Residue-property plots

These plots are drawn for all protein, RNA and DNA chains in the entry. The first graphic for a chain summarises the proportions of the various outlier classes displayed in the second graphic. The second graphic shows the sequence view annotated by issues in geometry and electron density. Residues are color-coded according to the number of geometric quality criteria for which they contain at least one outlier: green = 0, yellow = 1, orange = 2 and red = 3 or more. A red dot above a residue indicates a poor fit to the electron density ($RSRZ > 2$). Stretches of 2 or more consecutive residues without any outlier are shown as a green connector. Residues present in the sample, but not in the model, are shown in grey.

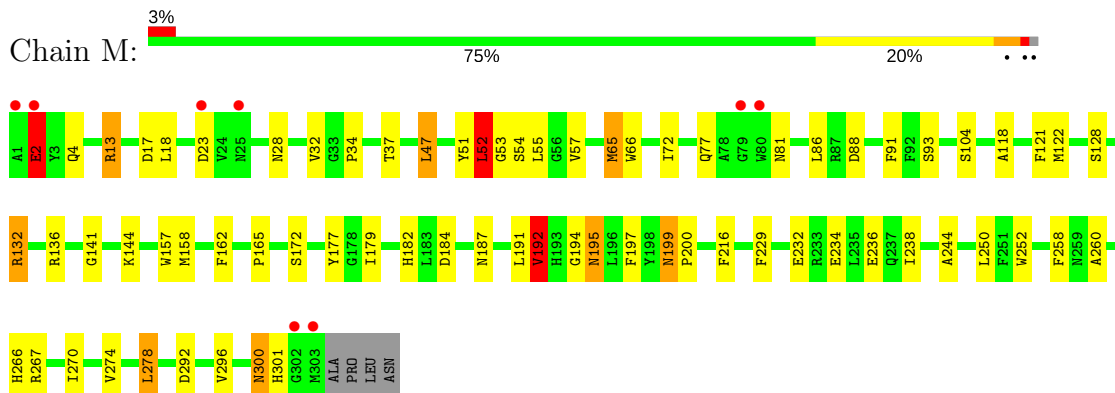
• Molecule 1: REACTION CENTER PROTEIN H CHAIN



• Molecule 2: REACTION CENTER PROTEIN L CHAIN



• Molecule 3: REACTION CENTER PROTEIN M CHAIN



4 Data and refinement statistics

Property	Value	Source
Space group	P 31 2 1	Depositor
Cell constants a, b, c, α , β , γ	139.00Å 139.00Å 183.55Å 90.00° 90.00° 120.00°	Depositor
Resolution (Å)	119.52 – 2.88 42.91 – 2.88	Depositor EDS
% Data completeness (in resolution range)	81.2 (119.52-2.88) 77.9 (42.91-2.88)	Depositor EDS
R_{merge}	0.10	Depositor
R_{sym}	(Not available)	Depositor
$\langle I/\sigma(I) \rangle$ ¹	2.41 (at 2.86Å)	Xtriage
Refinement program	REFMAC 5.1.24	Depositor
R, R_{free}	0.176 , 0.220 0.179 , 0.186	Depositor DCC
R_{free} test set	1906 reflections (4.98%)	wwPDB-VP
Wilson B-factor (Å ²)	54.3	Xtriage
Anisotropy	0.037	Xtriage
Bulk solvent k_{sol} (e/Å ³), B_{sol} (Å ²)	0.37 , 67.4	EDS
L-test for twinning ²	$\langle L \rangle = 0.47$, $\langle L^2 \rangle = 0.30$	Xtriage
Estimated twinning fraction	0.029 for -h,-k,l	Xtriage
F_o, F_c correlation	0.93	EDS
Total number of atoms	7302	wwPDB-VP
Average B, all atoms (Å ²)	51.0	wwPDB-VP

Xtriage's analysis on translational NCS is as follows: *The largest off-origin peak in the Patterson function is 2.68% of the height of the origin peak. No significant pseudotranslation is detected.*

¹Intensities estimated from amplitudes.

²Theoretical values of $\langle |L| \rangle$, $\langle L^2 \rangle$ for acentric reflections are 0.5, 0.333 respectively for untwinned datasets, and 0.375, 0.2 for perfectly twinned datasets.

5 Model quality

5.1 Standard geometry

Bond lengths and bond angles in the following residue types are not validated in this section: BCL, GOL, LDA, HTO, BPH, FE, SPO, U10, UQ2

The Z score for a bond length (or angle) is the number of standard deviations the observed value is removed from the expected value. A bond length (or angle) with $|Z| > 5$ is considered an outlier worth inspection. RMSZ is the root-mean-square of all Z scores of the bond lengths (or angles).

Mol	Chain	Bond lengths		Bond angles	
		RMSZ	$\# Z > 5$	RMSZ	$\# Z > 5$
1	H	0.83	2/1906 (0.1%)	0.92	7/2591 (0.3%)
2	L	0.80	0/2320	0.82	4/3175 (0.1%)
3	M	0.78	0/2501	0.81	5/3415 (0.1%)
All	All	0.80	2/6727 (0.0%)	0.85	16/9181 (0.2%)

All (2) bond length outliers are listed below:

Mol	Chain	Res	Type	Atoms	Z	Observed(Å)	Ideal(Å)
1	H	122	GLU	CG-CD	5.70	1.60	1.51
1	H	194	GLN	CG-CD	5.07	1.62	1.51

The worst 5 of 16 bond angle outliers are listed below:

Mol	Chain	Res	Type	Atoms	Z	Observed(°)	Ideal(°)
3	M	52	LEU	CA-CB-CG	8.47	134.77	115.30
2	L	261	ASP	CB-CG-OD2	7.19	124.77	118.30
1	H	107	ASP	CB-CG-OD2	5.88	123.59	118.30
3	M	23	ASP	CB-CG-OD2	5.83	123.55	118.30
1	H	103	ASP	CB-CG-OD2	5.79	123.51	118.30

There are no chirality outliers.

There are no planarity outliers.

5.2 Too-close contacts

In the following table, the Non-H and H(model) columns list the number of non-hydrogen atoms and hydrogen atoms in the chain respectively. The H(added) column lists the number of hydrogen atoms added and optimized by MolProbity. The Clashes column lists the number of clashes within the asymmetric unit, whereas Symm-Clashes lists symmetry related clashes.

Mol	Chain	Non-H	H(model)	H(added)	Clashes	Symm-Clashes
1	H	1846	0	1861	32	0
2	L	2232	0	2187	35	0
3	M	2409	0	2321	41	0
4	H	18	0	24	3	0
4	L	6	0	8	2	0
5	L	132	0	148	3	0
5	M	132	0	148	13	0
6	L	65	0	76	8	0
6	M	65	0	76	11	0
7	L	46	0	52	14	0
8	L	10	0	16	0	0
9	M	48	0	93	3	0
10	M	1	0	0	0	0
11	M	48	0	63	1	0
12	M	42	0	60	1	0
13	H	76	0	0	3	0
13	L	68	0	0	1	0
13	M	58	0	0	2	0
All	All	7302	0	7133	133	0

The all-atom clashscore is defined as the number of clashes found per 1000 atoms (including hydrogen atoms). The all-atom clashscore for this structure is 9.

The worst 5 of 133 close contacts within the same asymmetric unit are listed below, sorted by their clash magnitude.

Atom-1	Atom-2	Interatomic distance (Å)	Clash overlap (Å)
6:L:1283:BPH:HHC	6:L:1283:BPH:CBB	1.94	0.97
6:M:1309:BPH:CBB	6:M:1309:BPH:HHC	1.94	0.95
5:M:1303:BCL:H151	5:M:1303:BCL:H91	1.53	0.89
7:L:1284[B]:UQ2:C8	7:L:1284[B]:UQ2:H5M1	2.02	0.88
3:M:197:PHE:HZ	5:M:1304:BCL:HBB2	1.39	0.86

There are no symmetry-related clashes.

5.3 Torsion angles ⓘ

5.3.1 Protein backbone ⓘ

In the following table, the Percentiles column shows the percent Ramachandran outliers of the chain as a percentile score with respect to all X-ray entries followed by that with respect to entries of similar resolution.

The Analysed column shows the number of residues for which the backbone conformation was analysed, and the total number of residues.

Mol	Chain	Analysed	Favoured	Allowed	Outliers	Percentiles	
1	H	242/260 (93%)	226 (93%)	14 (6%)	2 (1%)	21	52
2	L	279/281 (99%)	265 (95%)	11 (4%)	3 (1%)	16	44
3	M	301/307 (98%)	277 (92%)	19 (6%)	5 (2%)	10	32
All	All	822/848 (97%)	768 (93%)	44 (5%)	10 (1%)	14	41

5 of 10 Ramachandran outliers are listed below:

Mol	Chain	Res	Type
3	M	2	GLU
3	M	52	LEU
1	H	116	ALA
2	L	273	ALA
1	H	245	ALA

5.3.2 Protein sidechains ⓘ

In the following table, the Percentiles column shows the percent sidechain outliers of the chain as a percentile score with respect to all X-ray entries followed by that with respect to entries of similar resolution.

The Analysed column shows the number of residues for which the sidechain conformation was analysed, and the total number of residues.

Mol	Chain	Analysed	Rotameric	Outliers	Percentiles	
1	H	198/208 (95%)	182 (92%)	16 (8%)	13	34
2	L	220/220 (100%)	200 (91%)	20 (9%)	10	28
3	M	236/240 (98%)	210 (89%)	26 (11%)	7	19
All	All	654/668 (98%)	592 (90%)	62 (10%)	9	26

5 of 62 residues with a non-rotameric sidechain are listed below:

Mol	Chain	Res	Type
2	L	185	LEU
2	L	249	ILE
3	M	258	PHE
2	L	207	ARG
3	M	2	GLU

Some sidechains can be flipped to improve hydrogen bonding and reduce clashes. 5 of 11 such sidechains are listed below:

Mol	Chain	Res	Type
2	L	264	GLN
3	M	4	GLN
3	M	193	HIS
2	L	170	ASN
3	M	187	ASN

5.3.3 RNA [i](#)

There are no RNA molecules in this entry.

5.4 Non-standard residues in protein, DNA, RNA chains [i](#)

There are no non-standard protein/DNA/RNA residues in this entry.

5.5 Carbohydrates [i](#)

There are no carbohydrates in this entry.

5.6 Ligand geometry [i](#)

Of 19 ligands modelled in this entry, 1 is monoatomic - leaving 18 for Mogul analysis.

In the following table, the Counts columns list the number of bonds (or angles) for which Mogul statistics could be retrieved, the number of bonds (or angles) that are observed in the model and the number of bonds (or angles) that are defined in the Chemical Component Dictionary. The Link column lists molecule types, if any, to which the group is linked. The Z score for a bond length (or angle) is the number of standard deviations the observed value is removed from the expected value. A bond length (or angle) with $|Z| > 2$ is considered an outlier worth inspection. RMSZ is the root-mean-square of all Z scores of the bond lengths (or angles).

Mol	Type	Chain	Res	Link	Bond lengths			Bond angles		
					Counts	RMSZ	$\# Z > 2$	Counts	RMSZ	$\# Z > 2$
4	GOL	H	1251	-	5,5,5	0.59	0	5,5,5	0.70	0
4	GOL	H	1252	-	5,5,5	0.25	0	5,5,5	0.57	0
4	GOL	H	1253	-	5,5,5	0.37	0	5,5,5	0.40	0
5	BCL	L	1282	2	58,74,74	2.44	9 (15%)	66,115,115	2.32	19 (28%)
6	BPH	L	1283	-	65,70,70	3.02	17 (26%)	75,101,101	1.91	19 (25%)
7	UQ2	L	1284[A]	-	23,23,23	2.79	8 (34%)	26,31,31	1.25	3 (11%)

Mol	Type	Chain	Res	Link	Bond lengths			Bond angles		
					Counts	RMSZ	# Z > 2	Counts	RMSZ	# Z > 2
7	UQ2	L	1284[B]	-	23,23,23	2.60	7 (30%)	26,31,31	1.39	4 (15%)
5	BCL	L	1285	2	58,74,74	2.24	10 (17%)	66,115,115	2.20	18 (27%)
8	HTO	L	1286	-	9,9,9	0.89	1 (11%)	9,10,10	1.38	2 (22%)
4	GOL	L	1287	-	5,5,5	0.40	0	5,5,5	0.44	0
5	BCL	M	1303	3	58,74,74	2.35	8 (13%)	66,115,115	2.05	18 (27%)
5	BCL	M	1304	3	58,74,74	2.28	9 (15%)	66,115,115	2.08	16 (24%)
9	LDA	M	1305	-	12,15,15	1.99	1 (8%)	14,17,17	0.73	1 (7%)
9	LDA	M	1306	-	12,15,15	1.83	1 (8%)	14,17,17	0.65	0
9	LDA	M	1307	-	12,15,15	1.99	1 (8%)	14,17,17	0.75	0
6	BPH	M	1309	-	65,70,70	2.90	17 (26%)	75,101,101	2.05	18 (24%)
11	U10	M	1310	-	48,48,63	2.69	13 (27%)	56,61,79	1.68	12 (21%)
12	SPO	M	1311	-	40,41,41	4.23	12 (30%)	49,50,50	1.97	11 (22%)

In the following table, the Chirals column lists the number of chiral outliers, the number of chiral centers analysed, the number of these observed in the model and the number defined in the Chemical Component Dictionary. Similar counts are reported in the Torsion and Rings columns. '-' means no outliers of that kind were identified.

Mol	Type	Chain	Res	Link	Chirals	Torsions	Rings
4	GOL	H	1251	-	-	0/4/4/4	0/0/0/0
4	GOL	H	1252	-	-	0/4/4/4	0/0/0/0
4	GOL	H	1253	-	-	0/4/4/4	0/0/0/0
5	BCL	L	1282	2	2/2/21/25	0/37/137/137	0/0/9/9
6	BPH	L	1283	-	-	0/52/105/105	0/5/6/6
7	UQ2	L	1284[A]	-	-	0/15/39/39	0/1/1/1
7	UQ2	L	1284[B]	-	-	0/15/39/39	0/1/1/1
5	BCL	L	1285	2	2/2/21/25	0/37/137/137	0/0/9/9
8	HTO	L	1286	-	-	0/10/10/10	0/0/0/0
4	GOL	L	1287	-	-	0/4/4/4	0/0/0/0
5	BCL	M	1303	3	2/2/21/25	0/37/137/137	0/0/9/9
5	BCL	M	1304	3	2/2/21/25	0/37/137/137	0/0/9/9
9	LDA	M	1305	-	-	0/13/13/13	0/0/0/0
9	LDA	M	1306	-	-	0/13/13/13	0/0/0/0
9	LDA	M	1307	-	-	0/13/13/13	0/0/0/0
6	BPH	M	1309	-	-	0/52/105/105	0/5/6/6
11	U10	M	1310	-	-	0/45/69/87	0/1/1/1
12	SPO	M	1311	-	-	0/47/47/47	0/0/0/0

The worst 5 of 114 bond length outliers are listed below:

Mol	Chain	Res	Type	Atoms	Z	Observed(Å)	Ideal(Å)
9	M	1307	LDA	O1-N1	-6.74	1.25	1.42
9	M	1305	LDA	O1-N1	-6.57	1.26	1.42
9	M	1306	LDA	O1-N1	-6.22	1.26	1.42
7	L	1284[A]	UQ2	O3-C3	-5.25	1.23	1.36
11	M	1310	U10	O3-C3	-4.69	1.25	1.36

The worst 5 of 141 bond angle outliers are listed below:

Mol	Chain	Res	Type	Atoms	Z	Observed(°)	Ideal(°)
6	M	1309	BPH	OBD-CAD-CBD	-8.46	113.48	125.91
5	L	1285	BCL	CMB-C2B-C1B	-6.95	117.78	128.46
5	L	1282	BCL	CMB-C2B-C1B	-6.82	117.98	128.46
5	M	1304	BCL	CMB-C2B-C1B	-6.63	118.27	128.46
5	L	1282	BCL	C4B-CHC-C1C	-6.34	117.57	130.12

5 of 8 chirality outliers are listed below:

Mol	Chain	Res	Type	Atom
5	M	1304	BCL	C8
5	M	1304	BCL	C13
5	L	1282	BCL	C8
5	L	1282	BCL	C13
5	M	1303	BCL	C8

There are no torsion outliers.

There are no ring outliers.

17 monomers are involved in 57 short contacts:

Mol	Chain	Res	Type	Clashes	Symm-Clashes
4	H	1251	GOL	1	0
4	H	1252	GOL	1	0
4	H	1253	GOL	1	0
5	L	1282	BCL	2	0
6	L	1283	BPH	8	0
7	L	1284[A]	UQ2	1	0
7	L	1284[B]	UQ2	13	0
5	L	1285	BCL	2	0
4	L	1287	GOL	2	0
5	M	1303	BCL	6	0
5	M	1304	BCL	9	0
9	M	1305	LDA	2	0
9	M	1306	LDA	2	0

Continued on next page...

Continued from previous page...

Mol	Chain	Res	Type	Clashes	Symm-Clashes
9	M	1307	LDA	1	0
6	M	1309	BPH	11	0
11	M	1310	U10	1	0
12	M	1311	SPO	1	0

5.7 Other polymers [i](#)

There are no such residues in this entry.

5.8 Polymer linkage issues [i](#)

There are no chain breaks in this entry.

6 Fit of model and data [i](#)

6.1 Protein, DNA and RNA chains [i](#)

In the following table, the column labelled ‘#RSRZ> 2’ contains the number (and percentage) of RSRZ outliers, followed by percent RSRZ outliers for the chain as percentile scores relative to all X-ray entries and entries of similar resolution. The OWAB column contains the minimum, median, 95th percentile and maximum values of the occupancy-weighted average B-factor per residue. The column labelled ‘Q< 0.9’ lists the number of (and percentage) of residues with an average occupancy less than 0.9.

Mol	Chain	Analysed	<RSRZ>	#RSRZ>2	OWAB(Å ²)	Q<0.9
1	H	241/260 (92%)	-0.42	5 (2%) 63 62	36, 51, 66, 102	0
2	L	281/281 (100%)	-0.65	5 (1%) 68 67	32, 44, 69, 84	0
3	M	303/307 (98%)	-0.45	8 (2%) 56 53	34, 51, 76, 104	0
All	All	825/848 (97%)	-0.51	18 (2%) 62 60	32, 49, 72, 104	0

The worst 5 of 18 RSRZ outliers are listed below:

Mol	Chain	Res	Type	RSRZ
3	M	1	ALA	4.1
2	L	281	GLY	3.6
1	H	249	LYS	3.4
1	H	220[A]	LYS	3.3
1	H	250	SER	3.3

6.2 Non-standard residues in protein, DNA, RNA chains [i](#)

There are no non-standard protein/DNA/RNA residues in this entry.

6.3 Carbohydrates [i](#)

There are no carbohydrates in this entry.

6.4 Ligands [i](#)

In the following table, the Atoms column lists the number of modelled atoms in the group and the number defined in the chemical component dictionary. The B-factors column lists the minimum, median, 95th percentile and maximum values of B factors of atoms in the group. The column labelled ‘Q< 0.9’ lists the number of atoms with occupancy less than 0.9.

Mol	Type	Chain	Res	Atoms	RSCC	RSR	B-factors(\AA^2)	Q<0.9
4	GOL	H	1253	6/6	0.67	0.45	113,114,115,116	0
4	GOL	H	1251	6/6	0.82	0.39	69,77,81,82	0
9	LDA	M	1307	16/16	0.83	0.32	98,102,114,115	0
7	UQ2	L	1284[A]	23/23	0.84	0.32	51,59,74,74	23
7	UQ2	L	1284[B]	23/23	0.84	0.32	31,35,43,45	23
4	GOL	L	1287	6/6	0.86	0.48	85,86,86,87	0
9	LDA	M	1305	16/16	0.87	0.26	74,83,86,87	0
4	GOL	H	1252	6/6	0.88	0.41	81,84,85,87	0
8	HTO	L	1286	10/10	0.88	0.48	71,83,83,84	0
9	LDA	M	1306	16/16	0.91	0.26	49,62,72,72	0
11	U10	M	1310	48/63	0.92	0.22	42,52,81,82	0
6	BPH	M	1309	65/65	0.94	0.21	39,48,109,110	0
12	SPO	M	1311	42/42	0.96	0.26	47,59,82,85	0
6	BPH	L	1283	65/65	0.97	0.15	25,35,53,55	0
5	BCL	M	1304	66/66	0.98	0.16	32,40,59,68	0
5	BCL	L	1282	66/66	0.98	0.13	31,40,64,75	0
5	BCL	L	1285	66/66	0.98	0.14	30,37,55,60	0
5	BCL	M	1303	66/66	0.98	0.15	29,41,93,96	0
10	FE	M	1308	1/1	0.99	0.07	41,41,41,41	0

6.5 Other polymers [i](#)

There are no such residues in this entry.