



Full wwPDB X-ray Structure Validation Report ⓘ

Mar 13, 2018 – 12:51 pm GMT

PDB ID : 2UXN
Title : Structural Basis of Histone Demethylation by LSD1 Revealed by Suicide In-activation
Authors : Yang, M.; Culhane, J.C.; Szewczuk, L.M.; Gocke, C.B.; Brautigam, C.A.; Tomchick, D.R.; Machius, M.; Cole, P.A.; Yu, H.
Deposited on : 2007-03-28
Resolution : 2.72 Å(reported)

This is a Full wwPDB X-ray Structure Validation Report for a publicly released PDB entry.

We welcome your comments at validation@mail.wwpdb.org

A user guide is available at

<https://www.wwpdb.org/validation/2017/XrayValidationReportHelp>

with specific help available everywhere you see the ⓘ symbol.

The following versions of software and data (see [references ⓘ](#)) were used in the production of this report:

MolProbity : 4.02b-467
Mogul : 1.7.3 (157068), CSD as539be (2018)
Xtriage (Phenix) : 1.13
EDS : trunk31020
Percentile statistics : 20171227.v01 (using entries in the PDB archive December 27th 2017)
Refmac : 5.8.0158
CCP4 : 7.0 (Gargrove)
Ideal geometry (proteins) : Engh & Huber (2001)
Ideal geometry (DNA, RNA) : Parkinson et al. (1996)
Validation Pipeline (wwPDB-VP) : trunk31020

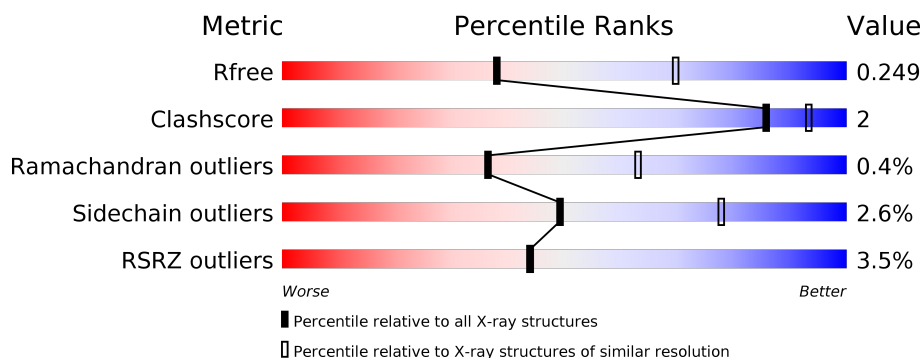
1 Overall quality at a glance

The following experimental techniques were used to determine the structure:

X-RAY DIFFRACTION

The reported resolution of this entry is 2.72 Å.

Percentile scores (ranging between 0-100) for global validation metrics of the entry are shown in the following graphic. The table shows the number of entries on which the scores are based.



Metric	Whole archive (#Entries)	Similar resolution (#Entries, resolution range(Å))
R_{free}	111664	2885 (2.74-2.70)
Clashscore	122126	3205 (2.74-2.70)
Ramachandran outliers	120053	3157 (2.74-2.70)
Sidechain outliers	120020	3158 (2.74-2.70)
RSRZ outliers	108989	2802 (2.74-2.70)

The table below summarises the geometric issues observed across the polymeric chains and their fit to the electron density. The red, orange, yellow and green segments on the lower bar indicate the fraction of residues that contain outliers for ≥ 3 , 2, 1 and 0 types of geometric quality criteria. A grey segment represents the fraction of residues that are not modelled. The numeric value for each fraction is indicated below the corresponding segment, with a dot representing fractions $\leq 5\%$. The upper red bar (where present) indicates the fraction of residues that have poor fit to the electron density. The numeric value is given above the bar.

Mol	Chain	Length	Quality of chain
1	A	666	<div> <div>2%</div> <div>93%</div> <div>6%</div> </div>
2	B	235	<div> <div>5%</div> <div>54%</div> <div>43%</div> </div>
3	E	21	<div> <div>10%</div> <div>24%</div> <div>5%</div> <div>5%</div> <div>67%</div> </div>

The following table lists non-polymeric compounds, carbohydrate monomers and non-standard residues in protein, DNA, RNA chains that are outliers for geometric or electron-density-fit criteria:

Mol	Type	Chain	Res	Chirality	Geometry	Clashes	Electron density
6	CL	A	1838	-	-	-	X

In the tables below, the ZeroOcc column contains the number of atoms modelled with zero occupancy, the AltConf column contains the number of residues with at least one atom in alternate conformation and the Trace column contains the number of residues modelled with at most 2 atoms.

- Molecule 1 is a protein called LYSINE-SPECIFIC HISTONE DEMETHYLASE 1.

Mol	Chain	Residues	Atoms					ZeroOcc	AltConf	Trace
1	A	664	Total	C	N	O	S	0	1	0
			5215	3322	908	965	20			

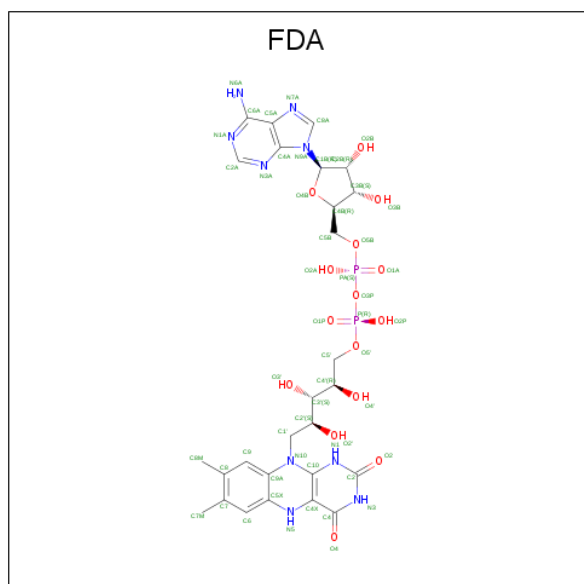
- Molecule 2 is a protein called REST COREPRESSOR 1.

Mol	Chain	Residues	Atoms					ZeroOcc	AltConf	Trace
2	B	133	Total	C	N	O	S	0	1	0
			1085	681	195	206	3			

- Molecule 3 is a protein called HISTONE H3.1.

Mol	Chain	Residues	Atoms				ZeroOcc	AltConf	Trace
3	E	7	Total	C	N	O	0	0	0
			57	35	12	10			

- Molecule 4 is DIHYDROFLAVINE-ADENINE DINUCLEOTIDE (three-letter code: FDA) (formula: $C_{27}H_{35}N_9O_{15}P_2$).



Mol	Chain	Residues	Atoms					ZeroOcc	AltConf
4	A	1	Total	C	N	O	P	0	0
			53	27	9	15	2		

- Molecule 5 is GLYCEROL (three-letter code: GOL) (formula: $C_3H_8O_3$).



Mol	Chain	Residues	Atoms			ZeroOcc	AltConf
5	A	1	Total	C	O	0	0
			6	3	3		

- Molecule 6 is CHLORIDE ION (three-letter code: CL) (formula: Cl).

Mol	Chain	Residues	Atoms		ZeroOcc	AltConf
6	A	2	Total	Cl	0	0
			2	2		

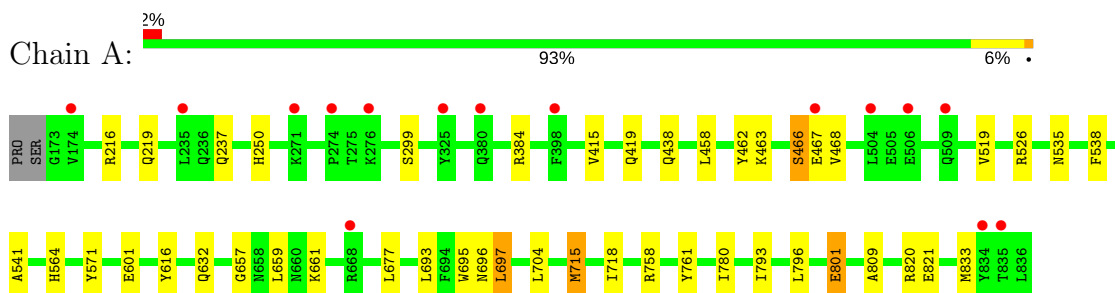
- Molecule 7 is water.

Mol	Chain	Residues	Atoms		ZeroOcc	AltConf
7	A	49	Total	O	0	0
			49	49		
7	B	1	Total	O	0	0
			1	1		
7	E	1	Total	O	0	0
			1	1		

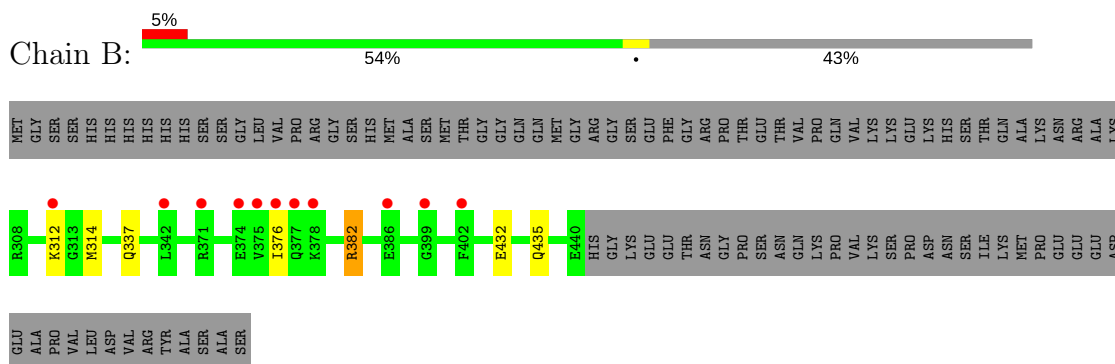
3 Residue-property plots [i](#)

These plots are drawn for all protein, RNA and DNA chains in the entry. The first graphic for a chain summarises the proportions of the various outlier classes displayed in the second graphic. The second graphic shows the sequence view annotated by issues in geometry and electron density. Residues are color-coded according to the number of geometric quality criteria for which they contain at least one outlier: green = 0, yellow = 1, orange = 2 and red = 3 or more. A red dot above a residue indicates a poor fit to the electron density ($RSRZ > 2$). Stretches of 2 or more consecutive residues without any outlier are shown as a green connector. Residues present in the sample, but not in the model, are shown in grey.

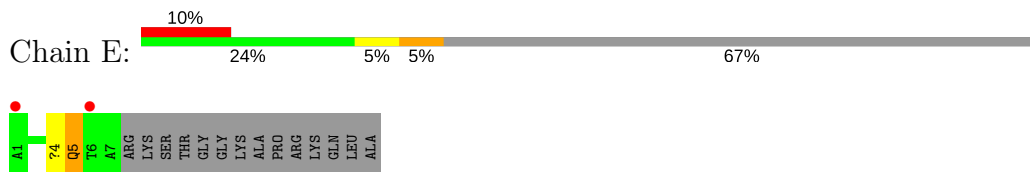
• Molecule 1: LYSINE-SPECIFIC HISTONE DEMETHYLASE 1



• Molecule 2: REST COREPRESSOR 1



• Molecule 3: HISTONE H3.1



4 Data and refinement statistics

Property	Value	Source
Space group	I 2 2 2	Depositor
Cell constants a, b, c, α , β , γ	119.95Å 178.65Å 234.93Å 90.00° 90.00° 90.00°	Depositor
Resolution (Å)	49.00 – 2.72 48.57 – 2.69	Depositor EDS
% Data completeness (in resolution range)	99.9 (49.00-2.72) 99.0 (48.57-2.69)	Depositor EDS
R_{merge}	0.05	Depositor
R_{sym}	(Not available)	Depositor
$\langle I/\sigma(I) \rangle$ ¹	1.91 (at 2.69Å)	Xtriage
Refinement program	REFMAC 5.2.0005	Depositor
R, R_{free}	0.241 , 0.272 0.231 , 0.249	Depositor DCC
R_{free} test set	1542 reflections (2.22%)	wwPDB-VP
Wilson B-factor (Å ²)	65.8	Xtriage
Anisotropy	0.620	Xtriage
Bulk solvent k_{sol} (e/Å ³), B_{sol} (Å ²)	0.32 , 51.2	EDS
L-test for twinning ²	$\langle L \rangle = 0.52$, $\langle L^2 \rangle = 0.36$	Xtriage
Estimated twinning fraction	No twinning to report.	Xtriage
F_o, F_c correlation	0.94	EDS
Total number of atoms	6469	wwPDB-VP
Average B, all atoms (Å ²)	75.0	wwPDB-VP

Xtriage's analysis on translational NCS is as follows: *The largest off-origin peak in the Patterson function is 2.92% of the height of the origin peak. No significant pseudotranslation is detected.*

¹Intensities estimated from amplitudes.

²Theoretical values of $\langle |L| \rangle$, $\langle L^2 \rangle$ for acentric reflections are 0.5, 0.333 respectively for untwinned datasets, and 0.375, 0.2 for perfectly twinned datasets.

5 Model quality

5.1 Standard geometry

Bond lengths and bond angles in the following residue types are not validated in this section: FDA, GOL, LYP, CL

The Z score for a bond length (or angle) is the number of standard deviations the observed value is removed from the expected value. A bond length (or angle) with $|Z| > 5$ is considered an outlier worth inspection. RMSZ is the root-mean-square of all Z scores of the bond lengths (or angles).

Mol	Chain	Bond lengths		Bond angles	
		RMSZ	$\# Z > 5$	RMSZ	$\# Z > 5$
1	A	0.37	0/5328	0.58	0/7227
2	B	0.38	0/1100	0.48	0/1483
3	E	0.61	0/42	0.68	0/54
All	All	0.38	0/6470	0.57	0/8764

There are no bond length outliers.

There are no bond angle outliers.

There are no chirality outliers.

There are no planarity outliers.

5.2 Too-close contacts

In the following table, the Non-H and H(model) columns list the number of non-hydrogen atoms and hydrogen atoms in the chain respectively. The H(added) column lists the number of hydrogen atoms added and optimized by MolProbity. The Clashes column lists the number of clashes within the asymmetric unit, whereas Symm-Clashes lists symmetry related clashes.

Mol	Chain	Non-H	H(model)	H(added)	Clashes	Symm-Clashes
1	A	5215	0	5251	29	0
2	B	1085	0	1096	5	0
3	E	57	0	64	2	0
4	A	53	0	32	0	0
5	A	6	0	8	0	0
6	A	2	0	0	0	0
7	A	49	0	0	0	0
7	B	1	0	0	0	0
7	E	1	0	0	0	0
All	All	6469	0	6451	31	0

The all-atom clashscore is defined as the number of clashes found per 1000 atoms (including hydrogen atoms). The all-atom clashscore for this structure is 2.

All (31) close contacts within the same asymmetric unit are listed below, sorted by their clash magnitude.

Atom-1	Atom-2	Interatomic distance (Å)	Clash overlap (Å)
1:A:384:ARG:HB3	2:B:314:MET:HE1	1.58	0.86
1:A:801:GLU:CG	1:A:809:ALA:H	1.88	0.84
1:A:801:GLU:HG2	1:A:809:ALA:H	1.41	0.83
1:A:801:GLU:HG3	1:A:809:ALA:HA	1.61	0.82
1:A:801:GLU:HG3	1:A:809:ALA:CA	2.18	0.73
1:A:801:GLU:HG3	1:A:809:ALA:N	2.12	0.64
1:A:801:GLU:CG	1:A:809:ALA:N	2.61	0.62
1:A:384:ARG:HB3	2:B:314:MET:CE	2.28	0.62
1:A:695:TRP:HE3	1:A:697:LEU:HD21	1.70	0.56
1:A:761:TYR:CD1	1:A:809:ALA:HB1	2.43	0.53
1:A:793:ILE:H	1:A:793:ILE:HD12	1.74	0.53
1:A:661:LYS:HD3	1:A:704:LEU:HD21	1.91	0.51
1:A:801:GLU:HG3	1:A:809:ALA:H	1.65	0.50
1:A:761:TYR:CZ	3:E:4:LYP:HCC2	2.47	0.50
1:A:715:MET:HA	1:A:718:ILE:HD12	1.93	0.49
1:A:216:ARG:NH1	1:A:219:GLN:OE1	2.46	0.49
2:B:432:GLU:O	2:B:435:GLN:HG2	2.14	0.47
1:A:780:ILE:HB	1:A:796:LEU:HB3	1.96	0.47
1:A:463:LYS:O	1:A:467:GLU:HG2	2.15	0.47
1:A:415:VAL:O	1:A:419:GLN:HG2	2.17	0.45
1:A:541:ALA:O	1:A:657:GLY:HA3	2.17	0.44
1:A:535:ASN:HD21	3:E:5:GLN:HE22	1.66	0.44
1:A:384:ARG:NH1	2:B:312:LYS:O	2.49	0.44
1:A:632:GLN:HG3	1:A:758[B]:ARG:CZ	2.49	0.43
1:A:820:ARG:NE	1:A:821:GLU:OE2	2.45	0.42
2:B:382:ARG:HB3	2:B:382:ARG:HE	1.58	0.42
1:A:601:GLU:HA	1:A:616:TYR:O	2.19	0.42
1:A:526:ARG:HD2	1:A:526:ARG:HA	1.91	0.42
1:A:462:TYR:O	1:A:466:SER:HB2	2.21	0.41
1:A:695:TRP:HB2	1:A:704:LEU:HB3	2.02	0.41
1:A:677:LEU:HB2	1:A:693:LEU:HD11	2.03	0.40

There are no symmetry-related clashes.

5.3 Torsion angles

5.3.1 Protein backbone

In the following table, the Percentiles column shows the percent Ramachandran outliers of the chain as a percentile score with respect to all X-ray entries followed by that with respect to entries of similar resolution.

The Analysed column shows the number of residues for which the backbone conformation was analysed, and the total number of residues.

Mol	Chain	Analysed	Favoured	Allowed	Outliers	Percentiles	
1	A	663/666 (100%)	645 (97%)	17 (3%)	1 (0%)	49	76
2	B	132/235 (56%)	126 (96%)	5 (4%)	1 (1%)	21	45
3	E	4/21 (19%)	1 (25%)	2 (50%)	1 (25%)	0	0
All	All	799/922 (87%)	772 (97%)	24 (3%)	3 (0%)	36	63

All (3) Ramachandran outliers are listed below:

Mol	Chain	Res	Type
1	A	468	VAL
2	B	376	ILE
3	E	5	GLN

5.3.2 Protein sidechains

In the following table, the Percentiles column shows the percent sidechain outliers of the chain as a percentile score with respect to all X-ray entries followed by that with respect to entries of similar resolution.

The Analysed column shows the number of residues for which the sidechain conformation was analysed, and the total number of residues.

Mol	Chain	Analysed	Rotameric	Outliers	Percentiles	
1	A	565/566 (100%)	549 (97%)	16 (3%)	47	75
2	B	118/203 (58%)	116 (98%)	2 (2%)	63	86
3	E	4/14 (29%)	4 (100%)	0	100	100
All	All	687/783 (88%)	669 (97%)	18 (3%)	49	78

All (18) residues with a non-rotameric sidechain are listed below:

Mol	Chain	Res	Type
1	A	237	GLN
1	A	250	HIS
1	A	299	SER
1	A	438	GLN
1	A	458	LEU
1	A	466	SER
1	A	519	VAL
1	A	538	PHE
1	A	564	HIS
1	A	571	TYR
1	A	659	LEU
1	A	696	ASN
1	A	697	LEU
1	A	715	MET
1	A	801	GLU
1	A	833	MET
2	B	337	GLN
2	B	382	ARG

Some sidechains can be flipped to improve hydrogen bonding and reduce clashes. All (3) such sidechains are listed below:

Mol	Chain	Res	Type
1	A	237	GLN
1	A	535	ASN
2	B	337	GLN

5.3.3 RNA ⓘ

There are no RNA molecules in this entry.

5.4 Non-standard residues in protein, DNA, RNA chains ⓘ

1 non-standard protein/DNA/RNA residue is modelled in this entry.

In the following table, the Counts columns list the number of bonds (or angles) for which Mogul statistics could be retrieved, the number of bonds (or angles) that are observed in the model and the number of bonds (or angles) that are defined in the Chemical Component Dictionary. The Link column lists molecule types, if any, to which the group is linked. The Z score for a bond length (or angle) is the number of standard deviations the observed value is removed from the expected value. A bond length (or angle) with $|Z| > 2$ is considered an outlier worth inspection. RMSZ is the root-mean-square of all Z scores of the bond lengths (or angles).

Mol	Type	Chain	Res	Link	Bond lengths			Bond angles		
					Counts	RMSZ	# Z > 2	Counts	RMSZ	# Z > 2
3	LYP	E	4	3,4	12,12,13	1.11	1 (8%)	10,13,15	0.96	1 (10%)

In the following table, the Chirals column lists the number of chiral outliers, the number of chiral centers analysed, the number of these observed in the model and the number defined in the Chemical Component Dictionary. Similar counts are reported in the Torsion and Rings columns. '-' means no outliers of that kind were identified.

Mol	Type	Chain	Res	Link	Chirals	Torsions	Rings
3	LYP	E	4	3,4	-	0/10/12/14	0/0/0/0

All (1) bond length outliers are listed below:

Mol	Chain	Res	Type	Atoms	Z	Observed(Å)	Ideal(Å)
3	E	4	LYP	CA-C	2.93	1.54	1.50

All (1) bond angle outliers are listed below:

Mol	Chain	Res	Type	Atoms	Z	Observed(°)	Ideal(°)
3	E	4	LYP	O-C-CA	-2.18	118.97	124.96

There are no chirality outliers.

There are no torsion outliers.

There are no ring outliers.

1 monomer is involved in 1 short contact:

Mol	Chain	Res	Type	Clashes	Symm-Clashes
3	E	4	LYP	1	0

5.5 Carbohydrates [i](#)

There are no carbohydrates in this entry.

5.6 Ligand geometry [i](#)

Of 4 ligands modelled in this entry, 2 are monoatomic - leaving 2 for Mogul analysis.

In the following table, the Counts columns list the number of bonds (or angles) for which Mogul statistics could be retrieved, the number of bonds (or angles) that are observed in the model and the number of bonds (or angles) that are defined in the Chemical Component Dictionary. The

Link column lists molecule types, if any, to which the group is linked. The Z score for a bond length (or angle) is the number of standard deviations the observed value is removed from the expected value. A bond length (or angle) with $|Z| > 2$ is considered an outlier worth inspection. RMSZ is the root-mean-square of all Z scores of the bond lengths (or angles).

Mol	Type	Chain	Res	Link	Bond lengths			Bond angles		
					Counts	RMSZ	# Z > 2	Counts	RMSZ	# Z > 2
5	GOL	A	1837	-	5,5,5	0.38	0	5,5,5	0.28	0
4	FDA	A	900	3	51,58,58	3.50	11 (21%)	57,89,89	2.03	11 (19%)

In the following table, the Chirals column lists the number of chiral outliers, the number of chiral centers analysed, the number of these observed in the model and the number defined in the Chemical Component Dictionary. Similar counts are reported in the Torsion and Rings columns. '-' means no outliers of that kind were identified.

Mol	Type	Chain	Res	Link	Chirals	Torsions	Rings
5	GOL	A	1837	-	-	0/4/4/4	0/0/0/0
4	FDA	A	900	3	-	0/28/50/50	0/6/6/6

All (11) bond length outliers are listed below:

Mol	Chain	Res	Type	Atoms	Z	Observed(Å)	Ideal(Å)
4	A	900	FDA	C5A-N7A	-2.08	1.32	1.39
4	A	900	FDA	P-O1P	2.62	1.60	1.50
4	A	900	FDA	PA-O1A	2.86	1.61	1.50
4	A	900	FDA	C2-N1	5.07	1.48	1.38
4	A	900	FDA	C2-N3	5.18	1.48	1.38
4	A	900	FDA	C4-C4X	5.76	1.51	1.41
4	A	900	FDA	C4-N3	8.26	1.47	1.33
4	A	900	FDA	C9A-N10	8.66	1.49	1.38
4	A	900	FDA	C5X-N5	8.82	1.48	1.35
4	A	900	FDA	C10-N1	11.53	1.48	1.33
4	A	900	FDA	C4X-N5	11.70	1.50	1.33

All (11) bond angle outliers are listed below:

Mol	Chain	Res	Type	Atoms	Z	Observed(°)	Ideal(°)
4	A	900	FDA	N3A-C2A-N1A	-9.98	120.32	128.86
4	A	900	FDA	C4B-O4B-C1B	-5.77	103.81	109.83
4	A	900	FDA	C9A-N10-C10	-3.92	116.55	121.77
4	A	900	FDA	C4X-N5-C5X	-3.58	113.01	116.76
4	A	900	FDA	C4X-C4-N3	-2.68	119.66	123.47
4	A	900	FDA	P-O3P-PA	-2.65	123.71	132.63
4	A	900	FDA	C4X-C10-N10	-2.60	117.98	120.40

Continued on next page...

Continued from previous page...

Mol	Chain	Res	Type	Atoms	Z	Observed(°)	Ideal(°)
4	A	900	FDA	C4-C4X-C10	-2.39	118.17	119.95
4	A	900	FDA	C4-N3-C2	-2.12	113.34	115.14
4	A	900	FDA	O4'-C4'-C3'	2.07	114.21	109.10
4	A	900	FDA	C1'-N10-C9A	2.92	120.91	118.31

There are no chirality outliers.

There are no torsion outliers.

There are no ring outliers.

No monomer is involved in short contacts.

5.7 Other polymers [i](#)

There are no such residues in this entry.

5.8 Polymer linkage issues [i](#)

There are no chain breaks in this entry.

6 Fit of model and data

6.1 Protein, DNA and RNA chains

In the following table, the column labelled ‘#RSRZ > 2’ contains the number (and percentage) of RSRZ outliers, followed by percent RSRZ outliers for the chain as percentile scores relative to all X-ray entries and entries of similar resolution. The OWAB column contains the minimum, median, 95th percentile and maximum values of the occupancy-weighted average B-factor per residue. The column labelled ‘Q < 0.9’ lists the number of (and percentage) of residues with an average occupancy less than 0.9.

Mol	Chain	Analysed	<RSRZ>	#RSRZ>2	OWAB(Å ²)	Q<0.9
1	A	664/666 (99%)	0.33	15 (2%) 60 61	40, 69, 96, 106	0
2	B	133/235 (56%)	0.65	11 (8%) 11 10	75, 100, 124, 136	0
3	E	6/21 (28%)	1.80	2 (33%) 0 0	112, 118, 121, 122	0
All	All	803/922 (87%)	0.39	28 (3%) 44 44	40, 74, 111, 136	0

All (28) RSRZ outliers are listed below:

Mol	Chain	Res	Type	RSRZ
2	B	376	ILE	5.3
3	E	1	ALA	5.1
1	A	834	TYR	3.6
2	B	399	GLY	3.5
2	B	378	LYS	3.0
1	A	274	PRO	2.9
1	A	835	THR	2.7
2	B	402	PHE	2.7
2	B	377	GLN	2.6
3	E	6	THR	2.6
2	B	374	GLU	2.5
1	A	398	PHE	2.5
1	A	504	LEU	2.4
2	B	375	VAL	2.4
1	A	325	TYR	2.4
1	A	467	GLU	2.3
1	A	668	ARG	2.3
1	A	506	GLU	2.3
1	A	509	GLN	2.2
2	B	312	LYS	2.2
2	B	371	ARG	2.2
2	B	386[A]	GLU	2.2
1	A	380	GLN	2.1

Continued on next page...

Continued from previous page...

Mol	Chain	Res	Type	RSRZ
2	B	342	LEU	2.1
1	A	276	LYS	2.1
1	A	271	LYS	2.1
1	A	235	LEU	2.1
1	A	174	VAL	2.0

6.2 Non-standard residues in protein, DNA, RNA chains [i](#)

In the following table, the Atoms column lists the number of modelled atoms in the group and the number defined in the chemical component dictionary. The B-factors column lists the minimum, median, 95th percentile and maximum values of B factors of atoms in the group. The column labelled 'Q<0.9' lists the number of atoms with occupancy less than 0.9.

Mol	Type	Chain	Res	Atoms	RSCC	RSR	B-factors(Å ²)	Q<0.9
3	LYP	E	4	13/14	0.76	0.32	65,91,111,111	0

6.3 Carbohydrates [i](#)

There are no carbohydrates in this entry.

6.4 Ligands [i](#)

In the following table, the Atoms column lists the number of modelled atoms in the group and the number defined in the chemical component dictionary. The B-factors column lists the minimum, median, 95th percentile and maximum values of B factors of atoms in the group. The column labelled 'Q<0.9' lists the number of atoms with occupancy less than 0.9.

Mol	Type	Chain	Res	Atoms	RSCC	RSR	B-factors(Å ²)	Q<0.9
6	CL	A	1838	1/1	0.73	0.41	109,109,109,109	0
6	CL	A	1839	1/1	0.84	0.24	87,87,87,87	0
5	GOL	A	1837	6/6	0.95	0.17	64,65,66,67	0
4	FDA	A	900	53/53	0.97	0.16	37,48,59,62	0

6.5 Other polymers [i](#)

There are no such residues in this entry.