



wwPDB X-ray Structure Validation Summary Report ⓘ

Mar 8, 2018 – 10:55 pm GMT

PDB ID : 1V0F
Title : Endosialidase of Bacteriophage K1F in complex with oligomeric alpha-2,8-sialic acid
Authors : Stummeyer, K.; Dickmanns, A.; Muehlenhoff, M.; Gerady-Schahn, R.; Ficner, R.
Deposited on : 2004-03-28
Resolution : 2.55 Å(reported)

This is a wwPDB X-ray Structure Validation Summary Report for a publicly released PDB entry.

We welcome your comments at validation@mail.wwpdb.org

A user guide is available at

<https://www.wwpdb.org/validation/2017/XrayValidationReportHelp>

with specific help available everywhere you see the ⓘ symbol.

The following versions of software and data (see [references ⓘ](#)) were used in the production of this report:

MolProbity : 4.02b-467
Mogul : 1.7.3 (157068), CSD as539be (2018)
Xtriage (Phenix) : 1.13
EDS : trunk30967
Percentile statistics : 20171227.v01 (using entries in the PDB archive December 27th 2017)
Refmac : 5.8.0158
CCP4 : 7.0 (Gargrove)
Ideal geometry (proteins) : Engh & Huber (2001)
Ideal geometry (DNA, RNA) : Parkinson et al. (1996)
Validation Pipeline (wwPDB-VP) : trunk30967

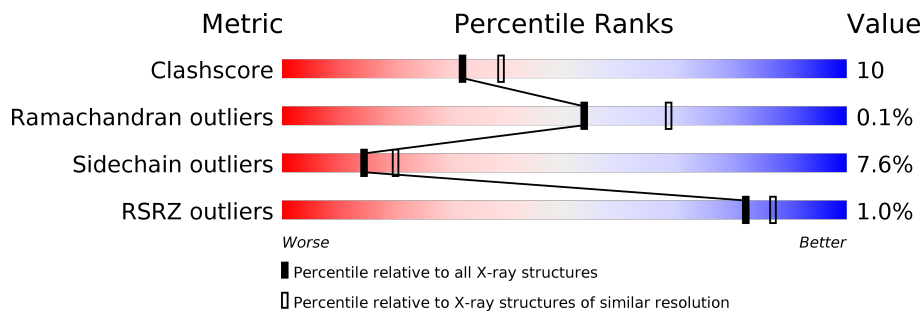
1 Overall quality at a glance

The following experimental techniques were used to determine the structure:

X-RAY DIFFRACTION

The reported resolution of this entry is 2.55 Å.

Percentile scores (ranging between 0-100) for global validation metrics of the entry are shown in the following graphic. The table shows the number of entries on which the scores are based.



Metric	Whole archive (#Entries)	Similar resolution (#Entries, resolution range(Å))
Clashscore	122126	1098 (2.56-2.52)
Ramachandran outliers	120053	1088 (2.56-2.52)
Sidechain outliers	120020	1088 (2.56-2.52)
RSRZ outliers	108989	1043 (2.56-2.52)

The table below summarises the geometric issues observed across the polymeric chains and their fit to the electron density. The red, orange, yellow and green segments on the lower bar indicate the fraction of residues that contain outliers for ≥ 3 , 2, 1 and 0 types of geometric quality criteria. A grey segment represents the fraction of residues that are not modelled. The numeric value for each fraction is indicated below the corresponding segment, with a dot representing fractions $\leq 5\%$. The upper red bar (where present) indicates the fraction of residues that have poor fit to the electron density. The numeric value is given above the bar.

Mol	Chain	Length	Quality of chain
1	A	666	<div> <div>76%</div> <div>21%</div> <div>.</div> </div>
1	B	666	<div> <div>76%</div> <div>20%</div> <div>.</div> </div>
1	C	666	<div> <div>72%</div> <div>24%</div> <div>..</div> </div>
1	D	666	<div> <div>76%</div> <div>20%</div> <div>.</div> </div>
1	E	666	<div> <div>2%</div> <div>74%</div> <div>21%</div> <div>.</div> </div>
1	F	666	<div> <div>76%</div> <div>21%</div> <div>..</div> </div>

2 Entry composition [i](#)

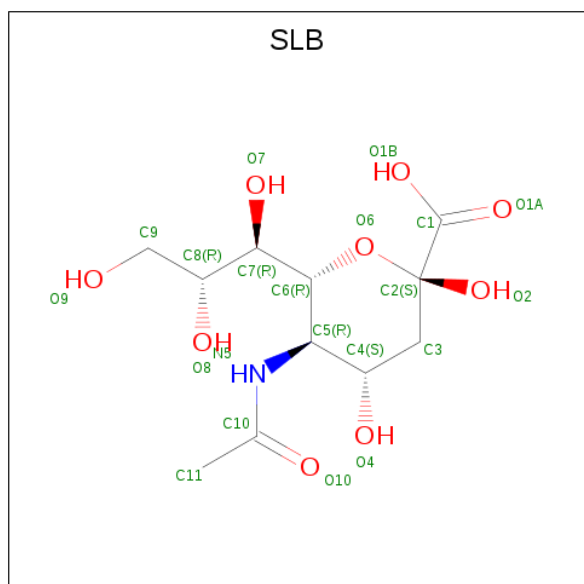
There are 5 unique types of molecules in this entry. The entry contains 32580 atoms, of which 0 are hydrogens and 0 are deuteriums.

In the tables below, the ZeroOcc column contains the number of atoms modelled with zero occupancy, the AltConf column contains the number of residues with at least one atom in alternate conformation and the Trace column contains the number of residues modelled with at most 2 atoms.

- Molecule 1 is a protein called ENDO-ALPHA-SIALIDASE.

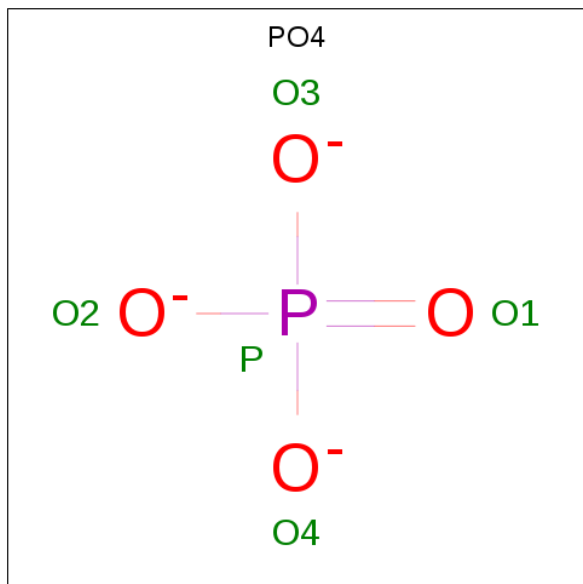
Mol	Chain	Residues	Atoms					ZeroOcc	AltConf	Trace
1	A	666	Total	C	N	O	S	0	0	0
			5230	3293	908	1010	19			
1	B	666	Total	C	N	O	S	0	0	0
			5230	3293	908	1010	19			
1	C	666	Total	C	N	O	S	0	0	0
			5230	3293	908	1010	19			
1	D	666	Total	C	N	O	S	0	0	0
			5230	3293	908	1010	19			
1	E	666	Total	C	N	O	S	0	0	0
			5230	3293	908	1010	19			
1	F	666	Total	C	N	O	S	0	0	0
			5230	3293	908	1010	19			

- Molecule 2 is 5-N-ACETYL-BETA-D-NEURAMINIC ACID (three-letter code: SLB) (formula: $C_{11}H_{19}NO_9$).



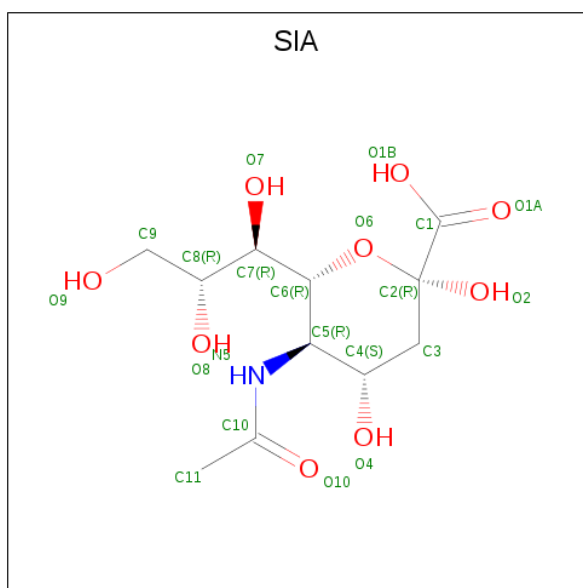
Mol	Chain	Residues	Atoms				ZeroOcc	AltConf
2	A	1	Total	C	N	O	0	0
			21	11	1	9		
2	B	1	Total	C	N	O	0	0
			21	11	1	9		
2	C	1	Total	C	N	O	0	0
			21	11	1	9		
2	D	1	Total	C	N	O	0	0
			21	11	1	9		
2	E	1	Total	C	N	O	0	0
			21	11	1	9		
2	F	1	Total	C	N	O	0	0
			21	11	1	9		

- Molecule 3 is PHOSPHATE ION (three-letter code: PO4) (formula: O₄P).



Mol	Chain	Residues	Atoms			ZeroOcc	AltConf
3	A	1	Total	O	P	0	0
			5	4	1		
3	B	1	Total	O	P	0	0
			5	4	1		
3	C	1	Total	O	P	0	0
			5	4	1		
3	D	1	Total	O	P	0	0
			5	4	1		
3	F	1	Total	O	P	0	0
			5	4	1		
3	F	1	Total	O	P	0	0
			5	4	1		

- Molecule 4 is O-SIALIC ACID (three-letter code: SIA) (formula: $C_{11}H_{19}NO_9$).



Mol	Chain	Residues	Atoms				ZeroOcc	AltConf
4	C	1	Total	C	N	O	0	0
			21	11	1	9		
4	C	1	Total	C	N	O	0	0
			20	11	1	8		
4	D	1	Total	C	N	O	0	0
			21	11	1	9		
4	D	1	Total	C	N	O	0	0
			20	11	1	8		
4	E	1	Total	C	N	O	0	0
			21	11	1	9		
4	E	1	Total	C	N	O	0	0
			20	11	1	8		

- Molecule 5 is water.

Mol	Chain	Residues	Atoms		ZeroOcc	AltConf
5	A	176	Total	O	0	0
			176	176		
5	B	178	Total	O	0	0
			178	178		
5	C	130	Total	O	0	0
			130	130		
5	D	167	Total	O	0	0
			167	167		
5	E	130	Total	O	0	0
			130	130		

Continued on next page...

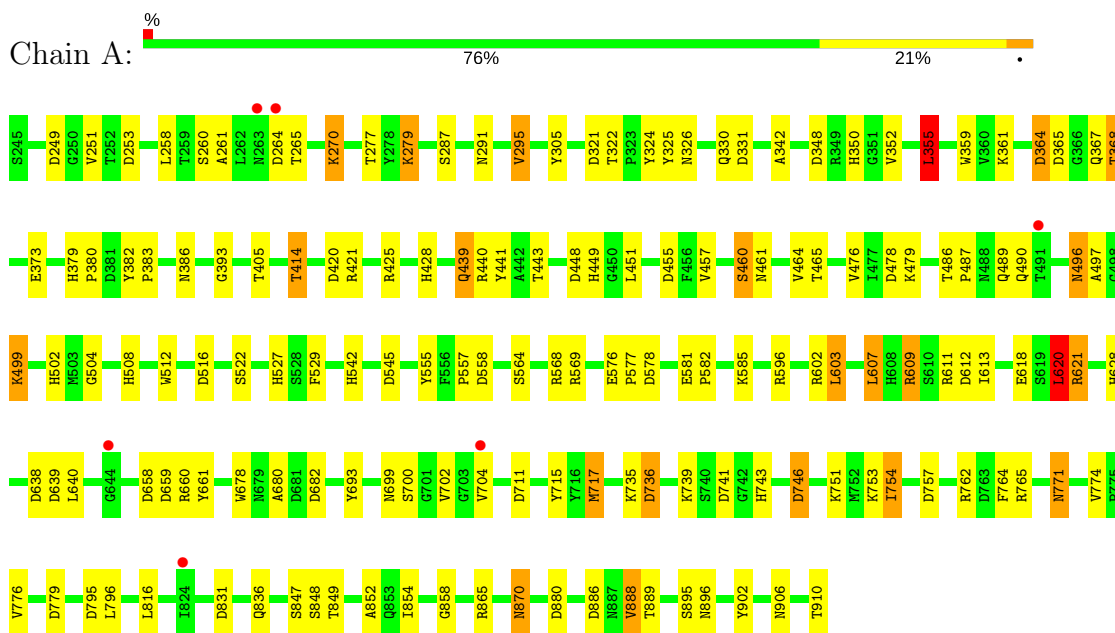
Continued from previous page...

Mol	Chain	Residues	Atoms		ZeroOcc	AltConf
5	F	140	Total	O	0	0
			140	140		

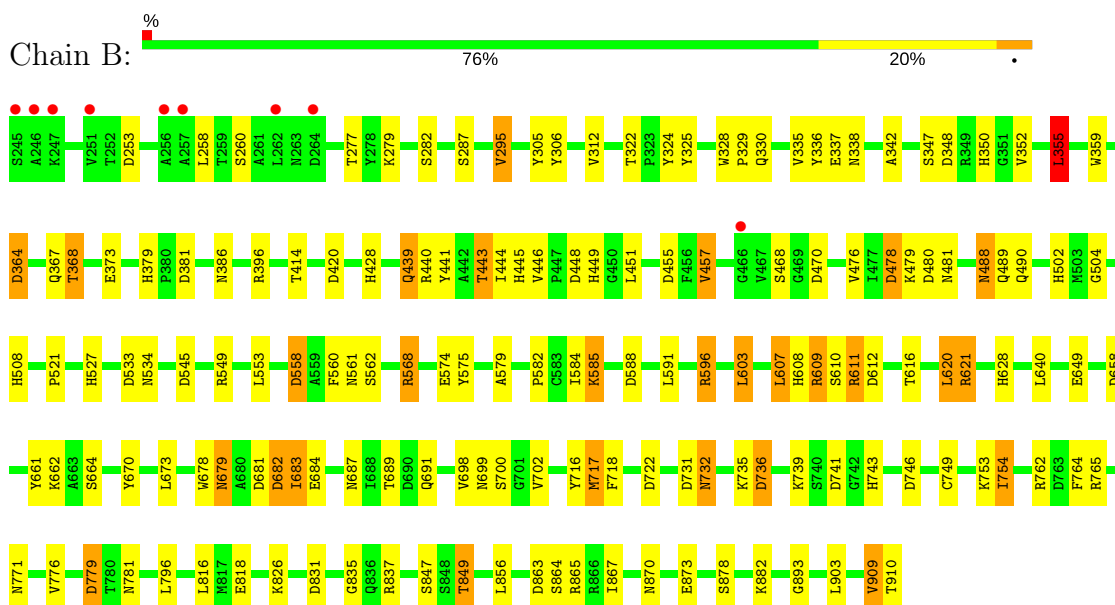
3 Residue-property plots

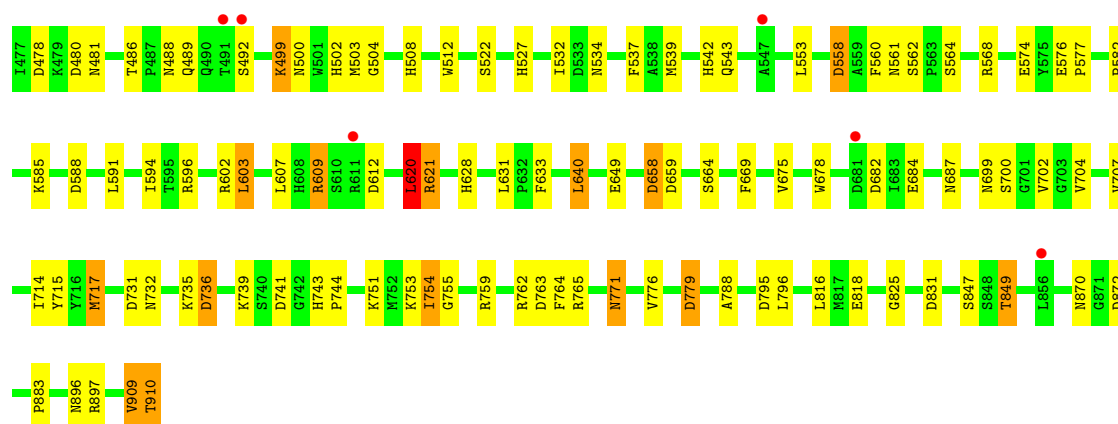
These plots are drawn for all protein, RNA and DNA chains in the entry. The first graphic for a chain summarises the proportions of the various outlier classes displayed in the second graphic. The second graphic shows the sequence view annotated by issues in geometry and electron density. Residues are color-coded according to the number of geometric quality criteria for which they contain at least one outlier: green = 0, yellow = 1, orange = 2 and red = 3 or more. A red dot above a residue indicates a poor fit to the electron density ($RSRZ > 2$). Stretches of 2 or more consecutive residues without any outlier are shown as a green connector. Residues present in the sample, but not in the model, are shown in grey.

• Molecule 1: ENDO-ALPHA-SIALIDASE

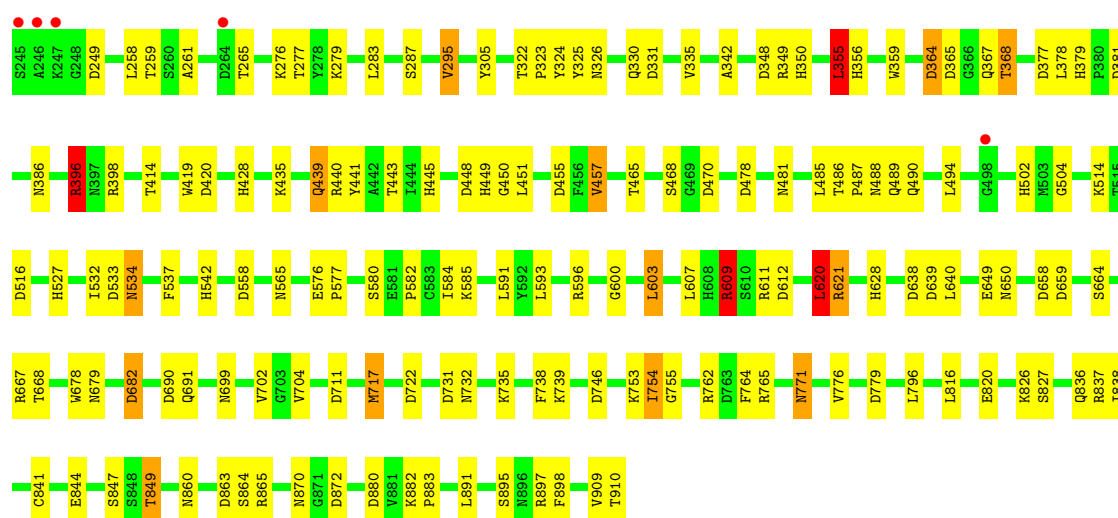
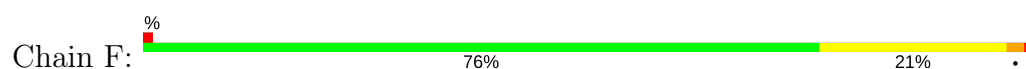


• Molecule 1: ENDO-ALPHA-SIALIDASE





● Molecule 1: ENDO-ALPHA-SIALIDASE



4 Data and refinement statistics

Property	Value	Source
Space group	P 2 2 21	Depositor
Cell constants a, b, c, α , β , γ	99.54Å 131.40Å 346.04Å 90.00° 90.00° 90.00°	Depositor
Resolution (Å)	30.00 – 2.55 30.00 – 2.55	Depositor EDS
% Data completeness (in resolution range)	88.4 (30.00-2.55) 88.1 (30.00-2.55)	Depositor EDS
R_{merge}	0.11	Depositor
R_{sym}	(Not available)	Depositor
$\langle I/\sigma(I) \rangle$ ¹	4.28 (at 2.54Å)	Xtriage
Refinement program	REFMAC	Depositor
R, R_{free}	0.180 , 0.232 0.198 , (Not available)	Depositor DCC
R_{free} test set	No test flags present.	wwPDB-VP
Wilson B-factor (Å ²)	29.6	Xtriage
Anisotropy	0.046	Xtriage
Bulk solvent k_{sol} (e/Å ³), B_{sol} (Å ²)	0.32 , 18.2	EDS
L-test for twinning ²	$\langle L \rangle = 0.46$, $\langle L^2 \rangle = 0.29$	Xtriage
Estimated twinning fraction	No twinning to report.	Xtriage
F_o, F_c correlation	0.93	EDS
Total number of atoms	32580	wwPDB-VP
Average B, all atoms (Å ²)	21.0	wwPDB-VP

Xtriage's analysis on translational NCS is as follows: *The largest off-origin peak in the Patterson function is 2.02% of the height of the origin peak. No significant pseudotranslation is detected.*

¹Intensities estimated from amplitudes.

²Theoretical values of $\langle |L| \rangle$, $\langle L^2 \rangle$ for acentric reflections are 0.5, 0.333 respectively for untwinned datasets, and 0.375, 0.2 for perfectly twinned datasets.

5 Model quality [i](#)

5.1 Standard geometry [i](#)

Bond lengths and bond angles in the following residue types are not validated in this section: PO4, SIA, SLB

The Z score for a bond length (or angle) is the number of standard deviations the observed value is removed from the expected value. A bond length (or angle) with $|Z| > 5$ is considered an outlier worth inspection. RMSZ is the root-mean-square of all Z scores of the bond lengths (or angles).

Mol	Chain	Bond lengths		Bond angles	
		RMSZ	$\# Z > 5$	RMSZ	$\# Z > 5$
1	A	0.72	0/5376	0.94	31/7325 (0.4%)
1	B	0.72	0/5376	0.94	28/7325 (0.4%)
1	C	0.70	0/5376	0.94	29/7325 (0.4%)
1	D	0.73	0/5376	0.95	31/7325 (0.4%)
1	E	0.69	0/5376	0.92	23/7325 (0.3%)
1	F	0.71	0/5376	0.94	33/7325 (0.5%)
All	All	0.71	0/32256	0.94	175/43950 (0.4%)

There are no bond length outliers.

The worst 5 of 175 bond angle outliers are listed below:

Mol	Chain	Res	Type	Atoms	Z	Observed(°)	Ideal(°)
1	A	364	ASP	CB-CG-OD2	9.56	126.91	118.30
1	E	355	LEU	CA-CB-CG	9.49	137.13	115.30
1	F	638	ASP	CB-CG-OD2	8.38	125.84	118.30
1	D	682	ASP	CB-CG-OD2	8.26	125.74	118.30
1	C	545	ASP	CB-CG-OD2	8.15	125.64	118.30

There are no chirality outliers.

There are no planarity outliers.

5.2 Too-close contacts [i](#)

In the following table, the Non-H and H(model) columns list the number of non-hydrogen atoms and hydrogen atoms in the chain respectively. The H(added) column lists the number of hydrogen atoms added and optimized by MolProbity. The Clashes column lists the number of clashes within the asymmetric unit, whereas Symm-Clashes lists symmetry related clashes.

Mol	Chain	Non-H	H(model)	H(added)	Clashes	Symm-Clashes
1	A	5230	0	4942	104	0
1	B	5230	0	4942	110	0
1	C	5230	0	4942	113	0
1	D	5230	0	4942	103	0
1	E	5230	0	4942	117	0
1	F	5230	0	4942	95	0
2	A	21	0	18	0	0
2	B	21	0	18	0	0
2	C	21	0	18	0	0
2	D	21	0	18	0	0
2	E	21	0	18	0	0
2	F	21	0	18	1	0
3	A	5	0	0	0	0
3	B	5	0	0	1	0
3	C	5	0	0	1	0
3	D	5	0	0	0	0
3	F	10	0	0	0	0
4	C	41	0	34	0	0
4	D	41	0	34	2	0
4	E	41	0	34	1	0
5	A	176	0	0	11	0
5	B	178	0	0	12	0
5	C	130	0	0	6	0
5	D	167	0	0	11	0
5	E	130	0	0	15	0
5	F	140	0	0	15	0
All	All	32580	0	29862	590	0

The all-atom clashscore is defined as the number of clashes found per 1000 atoms (including hydrogen atoms). The all-atom clashscore for this structure is 10.

The worst 5 of 590 close contacts within the same asymmetric unit are listed below, sorted by their clash magnitude.

Atom-1	Atom-2	Interatomic distance (Å)	Clash overlap (Å)
1:B:490:GLN:HG3	5:B:2041:HOH:O	1.51	1.09
1:E:499:LYS:HE2	1:E:500:ASN:H	1.21	1.04
1:A:765:ARG:HH12	1:C:367:GLN:HE21	1.07	0.98
1:F:449:HIS:HD2	1:F:451:LEU:H	1.07	0.98
1:C:449:HIS:HD2	1:C:451:LEU:H	1.00	0.96

There are no symmetry-related clashes.

5.3 Torsion angles

5.3.1 Protein backbone

In the following table, the Percentiles column shows the percent Ramachandran outliers of the chain as a percentile score with respect to all X-ray entries followed by that with respect to entries of similar resolution.

The Analysed column shows the number of residues for which the backbone conformation was analysed, and the total number of residues.

Mol	Chain	Analysed	Favoured	Allowed	Outliers	Percentiles	
1	A	664/666 (100%)	631 (95%)	31 (5%)	2 (0%)	43	56
1	B	664/666 (100%)	630 (95%)	34 (5%)	0	100	100
1	C	664/666 (100%)	629 (95%)	35 (5%)	0	100	100
1	D	664/666 (100%)	631 (95%)	32 (5%)	1 (0%)	49	64
1	E	664/666 (100%)	634 (96%)	28 (4%)	2 (0%)	43	56
1	F	664/666 (100%)	630 (95%)	34 (5%)	0	100	100
All	All	3984/3996 (100%)	3785 (95%)	194 (5%)	5 (0%)	53	68

All (5) Ramachandran outliers are listed below:

Mol	Chain	Res	Type
1	A	496	ASN
1	D	704	VAL
1	E	350	HIS
1	E	704	VAL
1	A	704	VAL

5.3.2 Protein sidechains

In the following table, the Percentiles column shows the percent sidechain outliers of the chain as a percentile score with respect to all X-ray entries followed by that with respect to entries of similar resolution.

The Analysed column shows the number of residues for which the sidechain conformation was analysed, and the total number of residues.

Mol	Chain	Analysed	Rotameric	Outliers	Percentiles	
1	A	564/564 (100%)	527 (93%)	37 (7%)	18	25
1	B	564/564 (100%)	519 (92%)	45 (8%)	13	17
1	C	564/564 (100%)	523 (93%)	41 (7%)	15	21

Continued on next page...

Continued from previous page...

Mol	Chain	Analysed	Rotameric	Outliers	Percentiles	
1	D	564/564 (100%)	523 (93%)	41 (7%)	15	21
1	E	564/564 (100%)	518 (92%)	46 (8%)	12	17
1	F	564/564 (100%)	518 (92%)	46 (8%)	12	17
All	All	3384/3384 (100%)	3128 (92%)	256 (8%)	14	20

5 of 256 residues with a non-rotameric sidechain are listed below:

Mol	Chain	Res	Type
1	C	754	ILE
1	D	585	LYS
1	F	609	ARG
1	C	816	LEU
1	D	359	TRP

Some sidechains can be flipped to improve hydrogen bonding and reduce clashes. 5 of 163 such sidechains are listed below:

Mol	Chain	Res	Type
1	C	650	ASN
1	D	461	ASN
1	F	508	HIS
1	C	691	GLN
1	D	263	ASN

5.3.3 RNA [i](#)

There are no RNA molecules in this entry.

5.4 Non-standard residues in protein, DNA, RNA chains [i](#)

There are no non-standard protein/DNA/RNA residues in this entry.

5.5 Carbohydrates [i](#)

There are no carbohydrates in this entry.

5.6 Ligand geometry

18 ligands are modelled in this entry.

In the following table, the Counts columns list the number of bonds (or angles) for which Mogul statistics could be retrieved, the number of bonds (or angles) that are observed in the model and the number of bonds (or angles) that are defined in the Chemical Component Dictionary. The Link column lists molecule types, if any, to which the group is linked. The Z score for a bond length (or angle) is the number of standard deviations the observed value is removed from the expected value. A bond length (or angle) with $|Z| > 2$ is considered an outlier worth inspection. RMSZ is the root-mean-square of all Z scores of the bond lengths (or angles).

Mol	Type	Chain	Res	Link	Bond lengths			Bond angles		
					Counts	RMSZ	# Z > 2	Counts	RMSZ	# Z > 2
2	SLB	A	1685	-	18,21,21	2.61	6 (33%)	19,31,31	1.28	2 (10%)
3	PO4	A	1686	-	4,4,4	0.78	0	6,6,6	0.85	0
2	SLB	B	1685	-	18,21,21	2.81	6 (33%)	19,31,31	1.86	3 (15%)
3	PO4	B	1686	-	4,4,4	1.21	0	6,6,6	0.84	0
2	SLB	C	1685	-	18,21,21	2.77	8 (44%)	19,31,31	1.19	3 (15%)
4	SIA	C	1686	4	18,21,21	2.69	7 (38%)	19,31,31	1.59	2 (10%)
3	PO4	C	1687	-	4,4,4	0.69	0	6,6,6	0.60	0
4	SIA	C	1688	4	17,20,21	1.75	4 (23%)	19,28,31	1.13	2 (10%)
2	SLB	D	1685	-	18,21,21	2.68	7 (38%)	19,31,31	1.23	2 (10%)
4	SIA	D	1686	4	18,21,21	3.13	6 (33%)	19,31,31	1.35	2 (10%)
3	PO4	D	1687	-	4,4,4	1.06	0	6,6,6	0.59	0
4	SIA	D	1688	4	17,20,21	1.61	3 (17%)	19,28,31	1.05	2 (10%)
2	SLB	E	1685	-	18,21,21	2.69	7 (38%)	19,31,31	1.45	2 (10%)
4	SIA	E	1686	4	18,21,21	3.64	6 (33%)	19,31,31	1.22	1 (5%)
4	SIA	E	1688	4	17,20,21	1.58	3 (17%)	19,28,31	1.40	3 (15%)
2	SLB	F	1685	-	18,21,21	2.31	5 (27%)	19,31,31	1.34	3 (15%)
3	PO4	F	1686	-	4,4,4	0.70	0	6,6,6	0.57	0
3	PO4	F	1687	-	4,4,4	0.74	0	6,6,6	0.79	0

In the following table, the Chirals column lists the number of chiral outliers, the number of chiral centers analysed, the number of these observed in the model and the number defined in the Chemical Component Dictionary. Similar counts are reported in the Torsion and Rings columns. '-' means no outliers of that kind were identified.

Mol	Type	Chain	Res	Link	Chirals	Torsions	Rings
2	SLB	A	1685	-	-	0/14/38/38	0/1/1/1
3	PO4	A	1686	-	-	0/0/0/0	0/0/0/0
2	SLB	B	1685	-	-	0/14/38/38	0/1/1/1
3	PO4	B	1686	-	-	0/0/0/0	0/0/0/0

Continued on next page...

Continued from previous page...

Mol	Type	Chain	Res	Link	Chirals	Torsions	Rings
2	SLB	C	1685	-	-	0/14/38/38	0/1/1/1
4	SIA	C	1686	4	-	0/14/38/38	0/1/1/1
3	PO4	C	1687	-	-	0/0/0/0	0/0/0/0
4	SIA	C	1688	4	-	0/14/34/38	0/1/1/1
2	SLB	D	1685	-	-	0/14/38/38	0/1/1/1
4	SIA	D	1686	4	-	0/14/38/38	0/1/1/1
3	PO4	D	1687	-	-	0/0/0/0	0/0/0/0
4	SIA	D	1688	4	-	0/14/34/38	0/1/1/1
2	SLB	E	1685	-	-	0/14/38/38	0/1/1/1
4	SIA	E	1686	4	-	0/14/38/38	0/1/1/1
4	SIA	E	1688	4	-	0/14/34/38	0/1/1/1
2	SLB	F	1685	-	-	0/14/38/38	0/1/1/1
3	PO4	F	1686	-	-	0/0/0/0	0/0/0/0
3	PO4	F	1687	-	-	0/0/0/0	0/0/0/0

The worst 5 of 68 bond length outliers are listed below:

Mol	Chain	Res	Type	Atoms	Z	Observed(Å)	Ideal(Å)
2	E	1685	SLB	O6-C6	-2.81	1.39	1.44
2	B	1685	SLB	C6-C5	2.07	1.56	1.53
2	E	1685	SLB	C11-C10	2.08	1.55	1.50
2	A	1685	SLB	C4-C5	2.20	1.55	1.53
4	E	1686	SIA	C5-N5	2.20	1.49	1.45

The worst 5 of 27 bond angle outliers are listed below:

Mol	Chain	Res	Type	Atoms	Z	Observed(°)	Ideal(°)
2	B	1685	SLB	O2-C2-C3	-5.10	102.48	109.33
2	E	1685	SLB	C6-C5-N5	-3.83	104.32	110.94
2	A	1685	SLB	C8-C7-C6	-2.92	107.42	113.03
4	E	1688	SIA	C5-N5-C10	-2.64	116.67	123.23
4	D	1688	SIA	C11-C10-N5	-2.19	112.26	116.10

There are no chirality outliers.

There are no torsion outliers.

There are no ring outliers.

5 monomers are involved in 6 short contacts:

Mol	Chain	Res	Type	Clashes	Symm-Clashes
3	B	1686	PO4	1	0
3	C	1687	PO4	1	0

Continued on next page...

Continued from previous page...

Mol	Chain	Res	Type	Clashes	Symm-Clashes
4	D	1688	SIA	2	0
4	E	1688	SIA	1	0
2	F	1685	SLB	1	0

5.7 Other polymers [i](#)

There are no such residues in this entry.

5.8 Polymer linkage issues [i](#)

There are no chain breaks in this entry.

6 Fit of model and data [i](#)

6.1 Protein, DNA and RNA chains [i](#)

In the following table, the column labelled ‘#RSRZ> 2’ contains the number (and percentage) of RSRZ outliers, followed by percent RSRZ outliers for the chain as percentile scores relative to all X-ray entries and entries of similar resolution. The OWAB column contains the minimum, median, 95th percentile and maximum values of the occupancy-weighted average B-factor per residue. The column labelled ‘Q< 0.9’ lists the number of (and percentage) of residues with an average occupancy less than 0.9.

Mol	Chain	Analysed	<RSRZ>	#RSRZ>2	OWAB(Å ²)	Q<0.9
1	A	666/666 (100%)	-0.22	6 (0%) 84 89	17, 21, 24, 30	0
1	B	666/666 (100%)	-0.17	9 (1%) 75 81	17, 21, 23, 30	0
1	C	666/666 (100%)	-0.13	7 (1%) 80 85	17, 21, 23, 29	0
1	D	666/666 (100%)	-0.28	2 (0%) 93 96	18, 21, 23, 31	0
1	E	666/666 (100%)	-0.17	10 (1%) 73 79	18, 21, 23, 30	0
1	F	666/666 (100%)	-0.24	5 (0%) 86 90	18, 21, 23, 29	0
All	All	3996/3996 (100%)	-0.20	39 (0%) 82 87	17, 21, 23, 31	0

The worst 5 of 39 RSRZ outliers are listed below:

Mol	Chain	Res	Type	RSRZ
1	B	245	SER	4.9
1	F	245	SER	4.9
1	E	246	ALA	4.5
1	F	246	ALA	4.3
1	C	245	SER	3.5

6.2 Non-standard residues in protein, DNA, RNA chains [i](#)

There are no non-standard protein/DNA/RNA residues in this entry.

6.3 Carbohydrates [i](#)

There are no carbohydrates in this entry.

6.4 Ligands [i](#)

In the following table, the Atoms column lists the number of modelled atoms in the group and the number defined in the chemical component dictionary. The B-factors column lists the minimum, median, 95th percentile and maximum values of B factors of atoms in the group. The column labelled 'Q< 0.9' lists the number of atoms with occupancy less than 0.9.

Mol	Type	Chain	Res	Atoms	RSCC	RSR	B-factors(\AA^2)	Q<0.9
4	SIA	D	1686	21/21	0.82	0.33	43,45,49,51	0
4	SIA	E	1686	21/21	0.85	0.27	38,41,47,49	0
4	SIA	C	1686	21/21	0.85	0.28	36,40,43,44	0
2	SLB	F	1685	21/21	0.89	0.21	33,40,46,49	0
2	SLB	D	1685	21/21	0.91	0.15	33,39,42,46	0
2	SLB	A	1685	21/21	0.91	0.21	37,42,47,48	0
2	SLB	C	1685	21/21	0.92	0.16	37,39,43,44	0
2	SLB	B	1685	21/21	0.92	0.19	30,37,43,44	0
2	SLB	E	1685	21/21	0.93	0.21	32,37,44,50	0
4	SIA	D	1688	20/21	0.93	0.20	35,40,42,44	0
4	SIA	E	1688	20/21	0.94	0.16	31,38,44,46	0
4	SIA	C	1688	20/21	0.94	0.18	35,38,43,45	0
3	PO4	F	1687	5/5	0.97	0.13	34,36,37,39	0
3	PO4	A	1686	5/5	0.97	0.11	33,36,38,39	0
3	PO4	B	1686	5/5	0.98	0.12	30,33,34,34	0
3	PO4	F	1686	5/5	0.98	0.08	38,39,39,40	0
3	PO4	D	1687	5/5	0.98	0.13	35,35,37,37	0
3	PO4	C	1687	5/5	0.98	0.10	36,37,38,40	0

6.5 Other polymers [i](#)

There are no such residues in this entry.