



# Full wwPDB X-ray Structure Validation Report ⓘ

Mar 14, 2018 – 02:16 pm GMT

PDB ID : 4V0S  
Title : Crystal structure of Mycobacterium tuberculosis Type II Dehydroquinase D88N mutant inhibited by a 3-dehydroquinic acid derivative  
Authors : Otero, J.M.; Llamas-Saiz, A.L.; Santiago, C.; Lamb, H.; Hawkins, A.R.; Maneiro, M.; Peon, A.; Gonzalez-Bello, C.; van Raaij, M.J.  
Deposited on : 2014-09-18  
Resolution : 1.55 Å(reported)

This is a Full wwPDB X-ray Structure Validation Report for a publicly released PDB entry.

We welcome your comments at [validation@mail.wwpdb.org](mailto:validation@mail.wwpdb.org)

A user guide is available at

<https://www.wwpdb.org/validation/2017/XrayValidationReportHelp>

with specific help available everywhere you see the ⓘ symbol.

---

The following versions of software and data (see [references ⓘ](#)) were used in the production of this report:

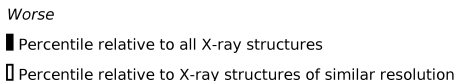
MolProbity	:	4.02b-467
Mogul	:	1.7.3 (157068), CSD as539be (2018)
Xtriage (Phenix)	:	1.13
EDS	:	trunk31020
Percentile statistics	:	20171227.v01 (using entries in the PDB archive December 27th 2017)
Refmac	:	5.8.0158
CCP4	:	7.0 (Gargrove)
Ideal geometry (proteins)	:	Engh & Huber (2001)
Ideal geometry (DNA, RNA)	:	Parkinson et al. (1996)
Validation Pipeline (wwPDB-VP)	:	trunk31020

**i**

## X-RAY DIFFRACTION

A.

the following graphic. The table shows the number of entries on which the scores are based.



Metric	Whole archive (#Entries)	Similar resolution (#Entries, resolution range(Å))
$R_{free}$	111664	1224 (1.56-1.56)
Clashscore	122126	1265 (1.56-1.56)
Ramachandran outliers	120053	1240 (1.56-1.56)
Sidechain outliers	120020	1238 (1.56-1.56)
RSRZ outliers	108989	1207 (1.56-1.56)

electron density. The numeric value is given above the bar.

Mol	Chain	Length	Quality of chain
1	A	146	<div> <div></div> <div>86%</div> <div>10%</div> <div>...</div> </div>
1	B	146	<div> <div>6%</div> <div>88%</div> <div>9%</div> <div>...</div> </div>

## 2 Entry composition [i](#)

There are 6 unique types of molecules in this entry. The entry contains 2423 atoms, of which 0 are hydrogens and 0 are deuteriums.

In the tables below, the ZeroOcc column contains the number of atoms modelled with zero occupancy, the AltConf column contains the number of residues with at least one atom in alternate conformation and the Trace column contains the number of residues modelled with at most 2 atoms.

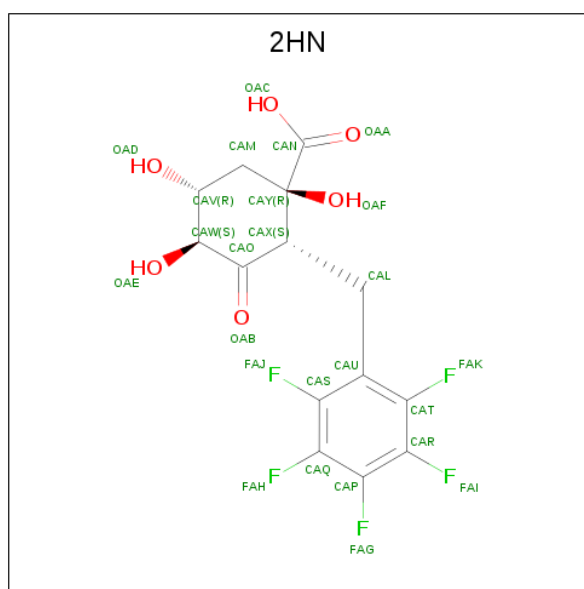
- Molecule 1 is a protein called 3-DEHYDROQUINATE DEHYDRATASE.

Mol	Chain	Residues	Atoms					ZeroOcc	AltConf	Trace
1	A	140	Total	C	N	O	S	0	5	0
			1068	678	187	202	1			
1	B	143	Total	C	N	O	S	0	3	0
			1104	699	201	203	1			

There are 2 discrepancies between the modelled and reference sequences:

Chain	Residue	Modelled	Actual	Comment	Reference
A	88	ASN	ASP	engineered mutation	UNP P9WPX6
B	88	ASN	ASP	engineered mutation	UNP P9WPX6

- Molecule 2 is (1R,2S,4S,5R)-2-(2,3,4,5,6-pentafluorophenyl)methyl-1,4,5-trihydroxy-3-oxocyclohexane-1-carboxylic acid (three-letter code: 2HN) (formula: C<sub>14</sub>H<sub>11</sub>F<sub>5</sub>O<sub>6</sub>).



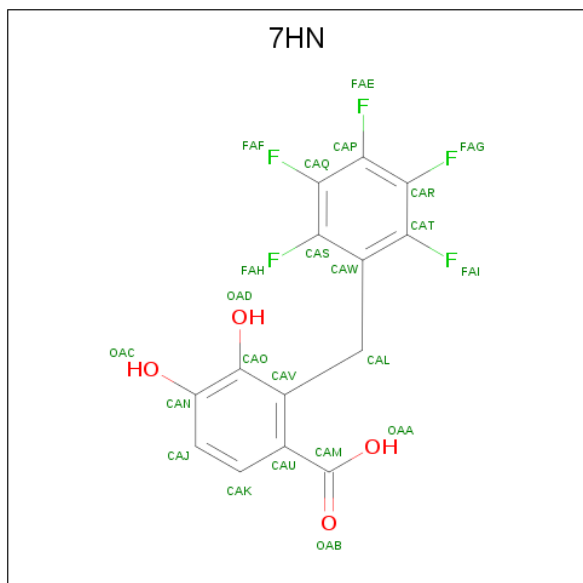
Mol	Chain	Residues	Atoms				ZeroOcc	AltConf
2	A	1	Total	C	F	O	0	0
			25	14	5	6		

Continued on next page...

Continued from previous page...

Mol	Chain	Residues	Atoms				ZeroOcc	AltConf
2	A	1	Total	C	F	O	0	0
			25	14	5	6		
2	B	1	Total	C	F	O	0	0
			25	14	5	6		

- Molecule 3 is 3,4-DIHYDROXY-2-[(2,3,4,5,6-PENTAFLUOROPHENYL)METHYL]BENZ OIC ACID (three-letter code: 7HN) (formula: C<sub>14</sub>H<sub>7</sub>F<sub>5</sub>O<sub>4</sub>).



Mol	Chain	Residues	Atoms				ZeroOcc	AltConf
3	A	1	Total	C	F	O	0	0
			23	14	5	4		

- Molecule 4 is CHLORIDE ION (three-letter code: CL) (formula: Cl).

Mol	Chain	Residues	Atoms		ZeroOcc	AltConf
4	B	1	Total	Cl	0	0
			1	1		
4	A	1	Total	Cl	0	0
			1	1		

- Molecule 5 is SODIUM ION (three-letter code: NA) (formula: Na).

Mol	Chain	Residues	Atoms		ZeroOcc	AltConf
5	A	1	Total	Na	0	0
			1	1		

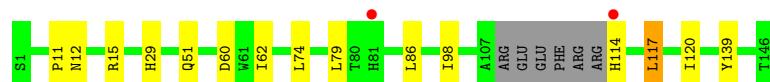
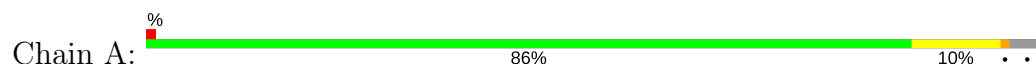
- Molecule 6 is water.

Mol	Chain	Residues	Atoms		ZeroOcc	AltConf
6	A	89	Total 89	O 89	0	0
6	B	61	Total 61	O 61	0	0

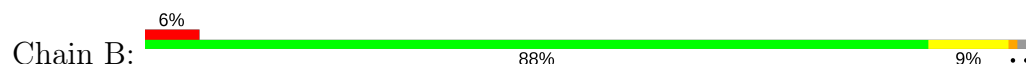
### 3 Residue-property plots [i](#)

These plots are drawn for all protein, RNA and DNA chains in the entry. The first graphic for a chain summarises the proportions of the various outlier classes displayed in the second graphic. The second graphic shows the sequence view annotated by issues in geometry and electron density. Residues are color-coded according to the number of geometric quality criteria for which they contain at least one outlier: green = 0, yellow = 1, orange = 2 and red = 3 or more. A red dot above a residue indicates a poor fit to the electron density ( $RSRZ > 2$ ). Stretches of 2 or more consecutive residues without any outlier are shown as a green connector. Residues present in the sample, but not in the model, are shown in grey.

#### • Molecule 1: 3-DEHYDROQUINATE DEHYDRATASE



#### • Molecule 1: 3-DEHYDROQUINATE DEHYDRATASE



## 4 Data and refinement statistics

Property	Value	Source
Space group	P 2 <sub>1</sub> 2 <sub>1</sub> 2 <sub>1</sub>	Depositor
Cell constants a, b, c, $\alpha$ , $\beta$ , $\gamma$	38.85Å 65.19Å 94.75Å 90.00° 90.00° 90.00°	Depositor
Resolution (Å)	53.71 – 1.55 53.71 – 1.55	Depositor EDS
% Data completeness (in resolution range)	95.2 (53.71-1.55) 95.2 (53.71-1.55)	Depositor EDS
$R_{merge}$	0.08	Depositor
$R_{sym}$	(Not available)	Depositor
$\langle I/\sigma(I) \rangle$ <sup>1</sup>	2.55 (at 1.55Å)	Xtriage
Refinement program	REFMAC 5.7.0029	Depositor
R, $R_{free}$	0.135 , 0.189 0.148 , 0.194	Depositor DCC
$R_{free}$ test set	1701 reflections (5.00%)	wwPDB-VP
Wilson B-factor (Å <sup>2</sup> )	16.5	Xtriage
Anisotropy	0.440	Xtriage
Bulk solvent $k_{sol}$ (e/Å <sup>3</sup> ), $B_{sol}$ (Å <sup>2</sup> )	0.38 , 47.1	EDS
L-test for twinning <sup>2</sup>	$\langle  L  \rangle = 0.49$ , $\langle L^2 \rangle = 0.32$	Xtriage
Estimated twinning fraction	No twinning to report.	Xtriage
$F_o, F_c$ correlation	0.97	EDS
Total number of atoms	2423	wwPDB-VP
Average B, all atoms (Å <sup>2</sup> )	20.0	wwPDB-VP

Xtriage's analysis on translational NCS is as follows: *The largest off-origin peak in the Patterson function is 8.47% of the height of the origin peak. No significant pseudotranslation is detected.*

<sup>1</sup>Intensities estimated from amplitudes.

<sup>2</sup>Theoretical values of  $\langle |L| \rangle$ ,  $\langle L^2 \rangle$  for acentric reflections are 0.5, 0.333 respectively for untwinned datasets, and 0.375, 0.2 for perfectly twinned datasets.

## 5 Model quality [i](#)

### 5.1 Standard geometry [i](#)

Bond lengths and bond angles in the following residue types are not validated in this section: NA, 7HN, CL, 2HN

The Z score for a bond length (or angle) is the number of standard deviations the observed value is removed from the expected value. A bond length (or angle) with  $|Z| > 5$  is considered an outlier worth inspection. RMSZ is the root-mean-square of all Z scores of the bond lengths (or angles).

Mol	Chain	Bond lengths		Bond angles	
		RMSZ	$\# Z  > 5$	RMSZ	$\# Z  > 5$
1	A	0.56	0/1099	0.75	1/1499 (0.1%)
1	B	0.57	0/1132	0.71	0/1542
All	All	0.56	0/2231	0.73	1/3041 (0.0%)

There are no bond length outliers.

All (1) bond angle outliers are listed below:

Mol	Chain	Res	Type	Atoms	Z	Observed(°)	Ideal(°)
1	A	15	ARG	NE-CZ-NH2	-5.47	117.56	120.30

There are no chirality outliers.

There are no planarity outliers.

### 5.2 Too-close contacts [i](#)

In the following table, the Non-H and H(model) columns list the number of non-hydrogen atoms and hydrogen atoms in the chain respectively. The H(added) column lists the number of hydrogen atoms added and optimized by MolProbity. The Clashes column lists the number of clashes within the asymmetric unit, whereas Symm-Clashes lists symmetry related clashes.

Mol	Chain	Non-H	H(model)	H(added)	Clashes	Symm-Clashes
1	A	1068	0	1096	15	0
1	B	1104	0	1125	14	0
2	A	50	0	20	0	0
2	B	25	0	10	0	0
3	A	23	0	4	0	0
4	A	1	0	0	0	0
4	B	1	0	0	0	0
5	A	1	0	0	0	0

*Continued on next page...*

*Continued from previous page...*

Mol	Chain	Non-H	H(model)	H(added)	Clashes	Symm-Clashes
6	A	89	0	0	1	0
6	B	61	0	0	2	0
All	All	2423	0	2255	29	0

The all-atom clashscore is defined as the number of clashes found per 1000 atoms (including hydrogen atoms). The all-atom clashscore for this structure is 6.

All (29) close contacts within the same asymmetric unit are listed below, sorted by their clash magnitude.

Atom-1	Atom-2	Interatomic distance (Å)	Clash overlap (Å)
1:B:97:LEU:HD21	1:B:117[B]:LEU:HD11	1.47	0.96
1:B:3:LEU:HD23	1:B:45:LEU:HD22	1.79	0.64
1:B:62:ILE:CD1	1:B:86[A]:LEU:HD11	2.31	0.60
1:A:117[B]:LEU:CD1	1:A:120:ILE:HD11	2.37	0.55
1:A:62:ILE:HD11	1:A:86[A]:LEU:HD11	1.88	0.54
1:A:98[B]:ILE:HD11	1:A:139:TYR:CD2	2.42	0.54
1:A:62:ILE:CD1	1:A:86[A]:LEU:CD1	2.88	0.52
1:B:62:ILE:HD11	1:B:86[A]:LEU:HD11	1.91	0.51
1:B:59:LEU:HD23	1:B:86[B]:LEU:HD23	1.92	0.51
1:B:142:GLU:HG2	6:B:2058:HOH:O	2.11	0.50
1:B:3:LEU:HB3	1:B:45:LEU:CD2	2.41	0.50
1:B:62:ILE:CD1	1:B:86[A]:LEU:CD1	2.89	0.50
1:A:117[B]:LEU:HD12	1:A:120:ILE:HD11	1.93	0.50
1:B:143:HIS:O	1:B:144:VAL:HG13	2.14	0.48
1:B:117[A]:LEU:HD12	6:B:2052:HOH:O	2.14	0.47
1:A:60[B]:ASP:OD2	6:A:2047:HOH:O	2.20	0.47
1:B:74:LEU:HD23	1:B:117[A]:LEU:HD13	1.97	0.46
1:A:11:PRO:HG2	1:A:79:LEU:HG	1.97	0.46
1:B:143:HIS:O	1:B:144:VAL:HG22	2.16	0.46
1:A:62:ILE:CD1	1:A:86[A]:LEU:HD11	2.46	0.45
1:B:3:LEU:HB3	1:B:45:LEU:HD22	1.98	0.45
1:A:74:LEU:HD23	1:A:117[A]:LEU:HD23	1.99	0.44
1:A:62:ILE:CD1	1:A:86[A]:LEU:HD12	2.47	0.44
1:B:59:LEU:CD2	1:B:86[B]:LEU:HD23	2.49	0.43
1:A:117[A]:LEU:HD12	1:A:117[A]:LEU:H	1.85	0.42
1:A:98[B]:ILE:HD11	1:A:139:TYR:HD2	1.85	0.41
1:A:29:HIS:CE1	1:A:51:GLN:HB2	2.55	0.41
1:A:114:HIS:HD1	1:A:114:HIS:N	2.20	0.40

There are no symmetry-related clashes.

## 5.3 Torsion angles

### 5.3.1 Protein backbone

In the following table, the Percentiles column shows the percent Ramachandran outliers of the chain as a percentile score with respect to all X-ray entries followed by that with respect to entries of similar resolution.

The Analysed column shows the number of residues for which the backbone conformation was analysed, and the total number of residues.

Mol	Chain	Analysed	Favoured	Allowed	Outliers	Percentiles	
1	A	141/146 (97%)	140 (99%)	0	1 (1%)	24	5
1	B	144/146 (99%)	142 (99%)	1 (1%)	1 (1%)	24	5
All	All	285/292 (98%)	282 (99%)	1 (0%)	2 (1%)	24	5

All (2) Ramachandran outliers are listed below:

Mol	Chain	Res	Type
1	A	12	ASN
1	B	12	ASN

### 5.3.2 Protein sidechains

In the following table, the Percentiles column shows the percent sidechain outliers of the chain as a percentile score with respect to all X-ray entries followed by that with respect to entries of similar resolution.

The Analysed column shows the number of residues for which the sidechain conformation was analysed, and the total number of residues.

Mol	Chain	Analysed	Rotameric	Outliers	Percentiles	
1	A	113/114 (99%)	111 (98%)	2 (2%)	62	32
1	B	115/114 (101%)	112 (97%)	3 (3%)	49	17
All	All	228/228 (100%)	223 (98%)	5 (2%)	62	24

All (5) residues with a non-rotameric sidechain are listed below:

Mol	Chain	Res	Type
1	A	117[A]	LEU
1	A	117[B]	LEU
1	B	108	ARG
1	B	109	GLU

*Continued on next page...*

*Continued from previous page...*

Mol	Chain	Res	Type
1	B	144	VAL

Some sidechains can be flipped to improve hydrogen bonding and reduce clashes. There are no such sidechains identified.

### 5.3.3 RNA ⓘ

There are no RNA molecules in this entry.

## 5.4 Non-standard residues in protein, DNA, RNA chains ⓘ

There are no non-standard protein/DNA/RNA residues in this entry.

## 5.5 Carbohydrates ⓘ

There are no carbohydrates in this entry.

## 5.6 Ligand geometry ⓘ

Of 7 ligands modelled in this entry, 3 are monoatomic - leaving 4 for Mogul analysis.

In the following table, the Counts columns list the number of bonds (or angles) for which Mogul statistics could be retrieved, the number of bonds (or angles) that are observed in the model and the number of bonds (or angles) that are defined in the Chemical Component Dictionary. The Link column lists molecule types, if any, to which the group is linked. The Z score for a bond length (or angle) is the number of standard deviations the observed value is removed from the expected value. A bond length (or angle) with  $|Z| > 2$  is considered an outlier worth inspection. RMSZ is the root-mean-square of all Z scores of the bond lengths (or angles).

Mol	Type	Chain	Res	Link	Bond lengths			Bond angles		
					Counts	RMSZ	# $ Z  > 2$	Counts	RMSZ	# $ Z  > 2$
2	2HN	A	1147	-	23,26,26	0.91	1 (4%)	27,41,41	1.13	2 (7%)
2	2HN	A	1148	-	23,26,26	1.08	0	27,41,41	1.03	0
3	7HN	A	1149	-	21,24,24	1.79	6 (28%)	31,36,36	1.48	3 (9%)
2	2HN	B	1145	-	23,26,26	0.90	0	27,41,41	0.78	1 (3%)

In the following table, the Chirals column lists the number of chiral outliers, the number of chiral centers analysed, the number of these observed in the model and the number defined in the Chemical Component Dictionary. Similar counts are reported in the Torsion and Rings columns. '-' means no outliers of that kind were identified.

Mol	Type	Chain	Res	Link	Chirals	Torsions	Rings
2	2HN	A	1147	-	-	0/4/33/33	0/2/2/2
2	2HN	A	1148	-	-	0/4/33/33	0/2/2/2
3	7HN	A	1149	-	-	0/4/8/8	0/2/2/2
2	2HN	B	1145	-	-	0/4/33/33	0/2/2/2

All (7) bond length outliers are listed below:

Mol	Chain	Res	Type	Atoms	Z	Observed(Å)	Ideal(Å)
3	A	1149	7HN	CAL-CAW	-4.05	1.43	1.52
3	A	1149	7HN	FAH-CAS	-4.00	1.28	1.35
3	A	1149	7HN	CAL-CAV	-3.23	1.45	1.52
3	A	1149	7HN	FAG-CAR	-2.69	1.30	1.35
3	A	1149	7HN	FAF-CAQ	-2.04	1.31	1.35
2	A	1147	2HN	OAE-CAW	2.06	1.46	1.42
3	A	1149	7HN	FAI-CAT	2.32	1.38	1.35

All (6) bond angle outliers are listed below:

Mol	Chain	Res	Type	Atoms	Z	Observed(°)	Ideal(°)
3	A	1149	7HN	CAK-CAU-CAM	-3.39	115.01	120.23
2	A	1147	2HN	CAL-CAU-CAT	-2.86	118.28	122.16
3	A	1149	7HN	CAK-CAJ-CAN	-2.33	118.15	120.51
2	B	1145	2HN	OAB-CAO-CAX	-2.11	119.37	122.76
2	A	1147	2HN	CAS-CAU-CAT	2.59	119.03	115.84
3	A	1149	7HN	CAL-CAV-CAU	4.97	125.92	120.69

There are no chirality outliers.

There are no torsion outliers.

There are no ring outliers.

No monomer is involved in short contacts.

## 5.7 Other polymers [i](#)

There are no such residues in this entry.

## 5.8 Polymer linkage issues [i](#)

There are no chain breaks in this entry.

## 6 Fit of model and data [i](#)

### 6.1 Protein, DNA and RNA chains [i](#)

In the following table, the column labelled ‘#RSRZ > 2’ contains the number (and percentage) of RSRZ outliers, followed by percent RSRZ outliers for the chain as percentile scores relative to all X-ray entries and entries of similar resolution. The OWAB column contains the minimum, median, 95<sup>th</sup> percentile and maximum values of the occupancy-weighted average B-factor per residue. The column labelled ‘Q < 0.9’ lists the number of (and percentage) of residues with an average occupancy less than 0.9.

Mol	Chain	Analysed	<RSRZ>	#RSRZ>2	OWAB(Å <sup>2</sup> )	Q<0.9
1	A	140/146 (95%)	-0.19	2 (1%) 75 80	9, 15, 30, 43	0
1	B	143/146 (97%)	0.03	9 (6%) 20 23	9, 17, 38, 68	0
All	All	283/292 (96%)	-0.08	11 (3%) 39 46	9, 16, 34, 68	0

All (11) RSRZ outliers are listed below:

Mol	Chain	Res	Type	RSRZ
1	B	109	GLU	7.0
1	B	111	PHE	5.3
1	A	114	HIS	4.4
1	B	108	ARG	3.9
1	B	117[A]	LEU	3.5
1	B	112	ARG	3.5
1	B	114[A]	HIS	3.4
1	A	81	HIS	2.8
1	B	107	ALA	2.5
1	B	2	GLU	2.1
1	B	18	ARG	2.0

### 6.2 Non-standard residues in protein, DNA, RNA chains [i](#)

There are no non-standard protein/DNA/RNA residues in this entry.

### 6.3 Carbohydrates [i](#)

There are no carbohydrates in this entry.

## 6.4 Ligands [i](#)

In the following table, the Atoms column lists the number of modelled atoms in the group and the number defined in the chemical component dictionary. The B-factors column lists the minimum, median, 95<sup>th</sup> percentile and maximum values of B factors of atoms in the group. The column labelled 'Q< 0.9' lists the number of atoms with occupancy less than 0.9.

Mol	Type	Chain	Res	Atoms	RSCC	RSR	B-factors( $\text{\AA}^2$ )	Q<0.9
3	7HN	A	1149	23/23	0.90	0.16	18,22,30,34	0
2	2HN	A	1148	25/25	0.96	0.07	12,14,18,19	0
2	2HN	A	1147	25/25	0.96	0.07	12,16,23,32	0
2	2HN	B	1145	25/25	0.98	0.06	10,12,22,24	0
4	CL	B	1146	1/1	0.99	0.04	28,28,28,28	0
4	CL	A	1150	1/1	0.99	0.04	24,24,24,24	0
5	NA	A	1151	1/1	0.99	0.06	20,20,20,20	0

## 6.5 Other polymers [i](#)

There are no such residues in this entry.