



Full wwPDB X-ray Structure Validation Report ⓘ

Jun 11, 2018 – 05:31 PM EDT

PDB ID : 4V1T
Title : Heterocyclase in complex with substrate and Cofactor
Authors : Koehnke, J.; Naismith, J.H.
Deposited on : 2014-10-02
Resolution : 2.14 Å(reported)

This is a Full wwPDB X-ray Structure Validation Report for a publicly released PDB entry.

We welcome your comments at validation@mail.wwpdb.org

A user guide is available at

<https://www.wwpdb.org/validation/2017/XrayValidationReportHelp>

with specific help available everywhere you see the ⓘ symbol.

The following versions of software and data (see [references ⓘ](#)) were used in the production of this report:

MolProbity : 4.02b-467
Mogul : 1.7.3 (157068), CSD as539be (2018)
Xtriage (Phenix) : 1.13
EDS : rb-20031172
Percentile statistics : 20171227.v01 (using entries in the PDB archive December 27th 2017)
Refmac : 5.8.0158
CCP4 : 7.0 (Gargrove)
Ideal geometry (proteins) : Engh & Huber (2001)
Ideal geometry (DNA, RNA) : Parkinson et al. (1996)
Validation Pipeline (wwPDB-VP) : rb-20031172

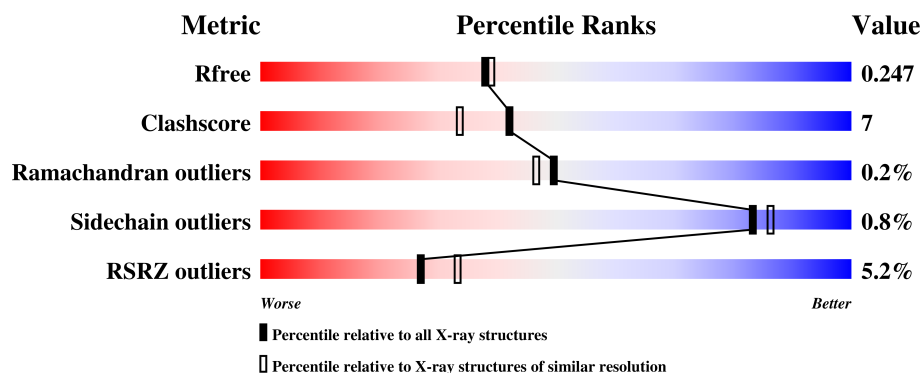
1 Overall quality at a glance

The following experimental techniques were used to determine the structure:

X-RAY DIFFRACTION

The reported resolution of this entry is 2.14 Å.

Percentile scores (ranging between 0-100) for global validation metrics of the entry are shown in the following graphic. The table shows the number of entries on which the scores are based.



Metric	Whole archive (#Entries)	Similar resolution (#Entries, resolution range(Å))
R_{free}	111664	2128 (2.16-2.12)
Clashscore	122126	2253 (2.16-2.12)
Ramachandran outliers	120053	2223 (2.16-2.12)
Sidechain outliers	120020	2222 (2.16-2.12)
RSRZ outliers	108989	2086 (2.16-2.12)

The table below summarises the geometric issues observed across the polymeric chains and their fit to the electron density. The red, orange, yellow and green segments on the lower bar indicate the fraction of residues that contain outliers for ≥ 3 , 2, 1 and 0 types of geometric quality criteria. A grey segment represents the fraction of residues that are not modelled. The numeric value for each fraction is indicated below the corresponding segment, with a dot representing fractions $\leq 5\%$. The upper red bar (where present) indicates the fraction of residues that have poor fit to the electron density. The numeric value is given above the bar.

Mol	Chain	Length	Quality of chain
1	A	775	<div> <div>7%</div> <div>86%</div> <div>10%</div> <div>.</div> </div>
1	B	775	<div> <div>2%</div> <div>83%</div> <div>14%</div> <div>.</div> </div>
2	C	64	<div> <div>5%</div> <div>22%</div> <div>77%</div> <div>.</div> </div>
2	D	64	<div> <div>3%</div> <div>19%</div> <div>78%</div> <div>.</div> </div>

2 Entry composition

There are 7 unique types of molecules in this entry. The entry contains 12653 atoms, of which 0 are hydrogens and 0 are deuteriums.

In the tables below, the ZeroOcc column contains the number of atoms modelled with zero occupancy, the AltConf column contains the number of residues with at least one atom in alternate conformation and the Trace column contains the number of residues modelled with at most 2 atoms.

- Molecule 1 is a protein called LYND.

Mol	Chain	Residues	Atoms					ZeroOcc	AltConf	Trace
1	A	748	Total	C	N	O	S	0	0	0
			5880	3743	1017	1104	16			
1	B	753	Total	C	N	O	S	0	0	0
			5914	3765	1020	1113	16			

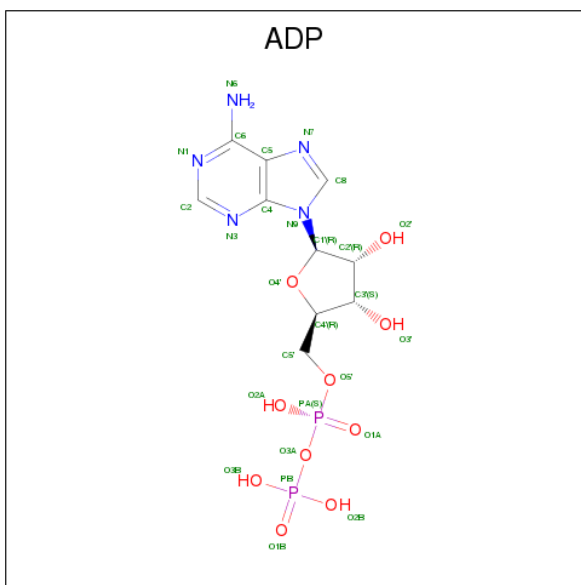
- Molecule 2 is a protein called PATE.

Mol	Chain	Residues	Atoms				ZeroOcc	AltConf	Trace
2	C	15	Total	C	N	O	0	0	0
			109	66	17	26			
2	D	14	Total	C	N	O	0	0	0
			105	64	16	25			

- Molecule 3 is ZINC ION (three-letter code: ZN) (formula: Zn).

Mol	Chain	Residues	Atoms		ZeroOcc	AltConf
3	B	1	Total	Zn	0	0
			1	1		
3	A	1	Total	Zn	0	0
			1	1		

- Molecule 4 is ADENOSINE-5'-DIPHOSPHATE (three-letter code: ADP) (formula: C₁₀H₁₅N₅O₁₀P₂).

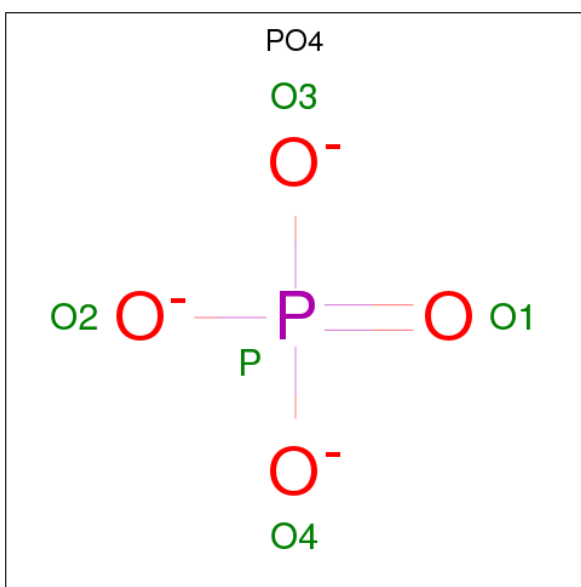


Mol	Chain	Residues	Atoms				ZeroOcc	AltConf	
4	A	1	Total 27	C 10	N 5	O 10	P 2	0	0
4	B	1	Total 27	C 10	N 5	O 10	P 2	0	0

- Molecule 5 is MAGNESIUM ION (three-letter code: MG) (formula: Mg).

Mol	Chain	Residues	Atoms	ZeroOcc	AltConf
5	B	3	Total Mg 3 3	0	0
5	A	3	Total Mg 3 3	0	0

- Molecule 6 is PHOSPHATE ION (three-letter code: PO4) (formula: O_4P).



Mol	Chain	Residues	Atoms			ZeroOcc	AltConf
6	A	1	Total	O	P	0	0
			5	4	1		
6	B	1	Total	O	P	0	0
			5	4	1		

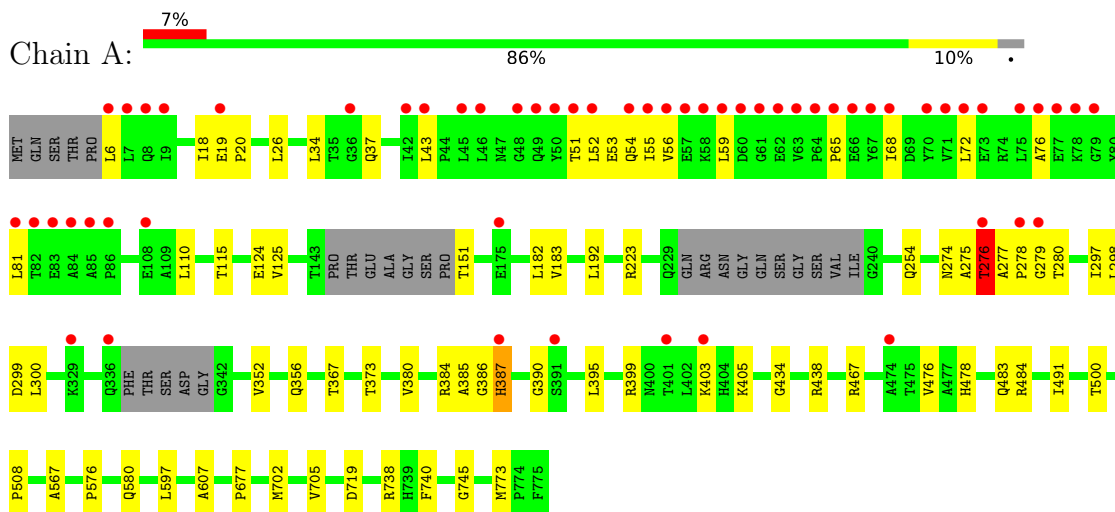
- Molecule 7 is water.

Mol	Chain	Residues	Atoms		ZeroOcc	AltConf
7	A	322	Total	O	0	0
			322	322		
7	B	245	Total	O	0	0
			245	245		
7	C	4	Total	O	0	0
			4	4		
7	D	2	Total	O	0	0
			2	2		

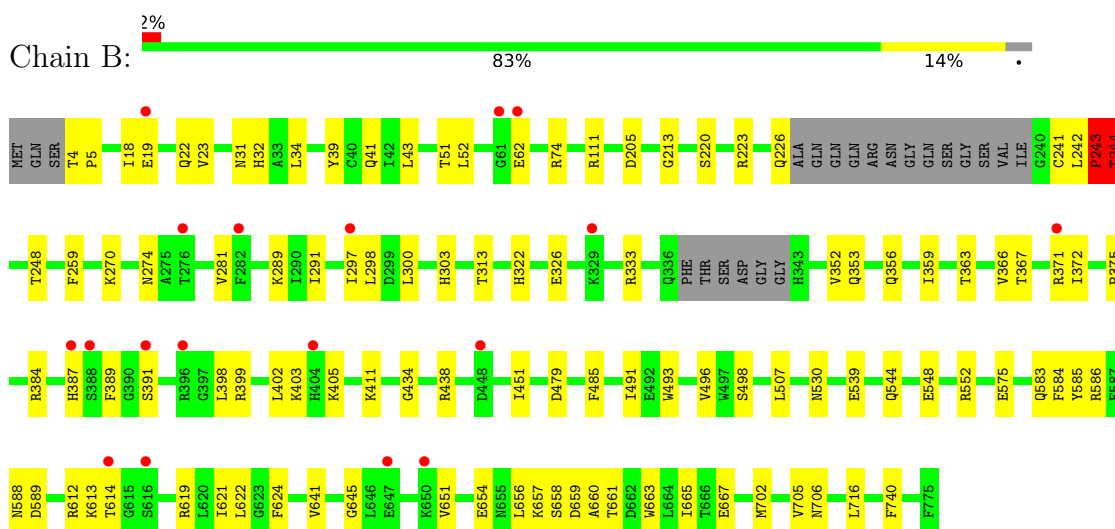
3 Residue-property plots

These plots are drawn for all protein, RNA and DNA chains in the entry. The first graphic for a chain summarises the proportions of the various outlier classes displayed in the second graphic. The second graphic shows the sequence view annotated by issues in geometry and electron density. Residues are color-coded according to the number of geometric quality criteria for which they contain at least one outlier: green = 0, yellow = 1, orange = 2 and red = 3 or more. A red dot above a residue indicates a poor fit to the electron density ($RSRZ > 2$). Stretches of 2 or more consecutive residues without any outlier are shown as a green connector. Residues present in the sample, but not in the model, are shown in grey.

• Molecule 1: LYND

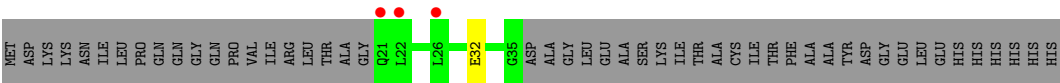


• Molecule 1: LYND



• Molecule 2: PATE





● Molecule 2: PATE



4 Data and refinement statistics

Property	Value	Source
Space group	P 21 21 21	Depositor
Cell constants a, b, c, α , β , γ	81.76Å 116.15Å 183.54Å 90.00° 90.00° 90.00°	Depositor
Resolution (Å)	47.35 – 2.14 47.35 – 2.14	Depositor EDS
% Data completeness (in resolution range)	98.5 (47.35-2.14) 98.5 (47.35-2.14)	Depositor EDS
R_{merge}	0.04	Depositor
R_{sym}	(Not available)	Depositor
$\langle I/\sigma(I) \rangle$ ¹	2.09 (at 2.14Å)	Xtriage
Refinement program	REFMAC 5.8.0049	Depositor
R, R_{free}	0.198 , 0.244 0.202 , 0.247	Depositor DCC
R_{free} test set	4791 reflections (5.01%)	wwPDB-VP
Wilson B-factor (Å ²)	37.6	Xtriage
Anisotropy	0.220	Xtriage
Bulk solvent k_{sol} (e/Å ³), B_{sol} (Å ²)	0.33 , 47.9	EDS
L-test for twinning ²	$\langle L \rangle = 0.48$, $\langle L^2 \rangle = 0.31$	Xtriage
Estimated twinning fraction	No twinning to report.	Xtriage
F_o, F_c correlation	0.95	EDS
Total number of atoms	12653	wwPDB-VP
Average B, all atoms (Å ²)	58.0	wwPDB-VP

Xtriage's analysis on translational NCS is as follows: *The largest off-origin peak in the Patterson function is 3.45% of the height of the origin peak. No significant pseudotranslation is detected.*

¹Intensities estimated from amplitudes.

²Theoretical values of $\langle |L| \rangle$, $\langle L^2 \rangle$ for acentric reflections are 0.5, 0.333 respectively for untwinned datasets, and 0.375, 0.2 for perfectly twinned datasets.

5 Model quality

5.1 Standard geometry

Bond lengths and bond angles in the following residue types are not validated in this section: PO4, MG, ZN, ADP

The Z score for a bond length (or angle) is the number of standard deviations the observed value is removed from the expected value. A bond length (or angle) with $|Z| > 5$ is considered an outlier worth inspection. RMSZ is the root-mean-square of all Z scores of the bond lengths (or angles).

Mol	Chain	Bond lengths		Bond angles	
		RMSZ	# Z >5	RMSZ	# Z >5
1	A	0.36	0/6021	0.51	0/8213
1	B	0.35	0/6059	0.51	2/8271 (0.0%)
2	C	0.37	0/108	0.44	0/144
2	D	0.48	0/104	0.47	0/139
All	All	0.36	0/12292	0.51	2/16767 (0.0%)

Chiral center outliers are detected by calculating the chiral volume of a chiral center and verifying if the center is modelled as a planar moiety or with the opposite hand. A planarity outlier is detected by checking planarity of atoms in a peptide group, atoms in a mainchain group or atoms of a sidechain that are expected to be planar.

Mol	Chain	#Chirality outliers	#Planarity outliers
1	A	0	4
1	B	0	1
All	All	0	5

There are no bond length outliers.

All (2) bond angle outliers are listed below:

Mol	Chain	Res	Type	Atoms	Z	Observed(°)	Ideal(°)
1	B	243	PRO	CA-N-CD	-6.46	102.45	111.50
1	B	19	GLU	C-N-CD	5.28	139.49	128.40

There are no chirality outliers.

All (5) planarity outliers are listed below:

Mol	Chain	Res	Type	Group
1	A	18	ILE	Peptide
1	A	385	ALA	Peptide

Continued on next page...

Continued from previous page...

Mol	Chain	Res	Type	Group
1	A	386	GLY	Peptide
1	A	390	GLY	Peptide
1	B	18	ILE	Peptide

5.2 Too-close contacts [i](#)

In the following table, the Non-H and H(model) columns list the number of non-hydrogen atoms and hydrogen atoms in the chain respectively. The H(added) column lists the number of hydrogen atoms added and optimized by MolProbity. The Clashes column lists the number of clashes within the asymmetric unit, whereas Symm-Clashes lists symmetry related clashes.

Mol	Chain	Non-H	H(model)	H(added)	Clashes	Symm-Clashes
1	A	5880	0	5834	73	0
1	B	5914	0	5870	112	0
2	C	109	0	105	1	0
2	D	105	0	102	2	0
3	A	1	0	0	0	0
3	B	1	0	0	0	0
4	A	27	0	12	0	0
4	B	27	0	12	0	0
5	A	3	0	0	0	0
5	B	3	0	0	0	0
6	A	5	0	0	0	0
6	B	5	0	0	0	0
7	A	322	0	0	15	0
7	B	245	0	0	8	0
7	C	4	0	0	0	0
7	D	2	0	0	0	0
All	All	12653	0	11935	179	0

The all-atom clashscore is defined as the number of clashes found per 1000 atoms (including hydrogen atoms). The all-atom clashscore for this structure is 7.

All (179) close contacts within the same asymmetric unit are listed below, sorted by their clash magnitude.

Atom-1	Atom-2	Interatomic distance (Å)	Clash overlap (Å)
1:A:367:THR:OG1	1:A:387:HIS:HB2	1.25	1.28
1:A:367:THR:OG1	1:A:387:HIS:CB	1.83	1.27
1:A:124:GLU:HG2	7:A:2035:HOH:O	1.37	1.21
1:B:23:VAL:HG11	1:B:43:LEU:HD22	1.32	1.05

Continued on next page...

Continued from previous page...

Atom-1	Atom-2	Interatomic distance (Å)	Clash overlap (Å)
1:B:223:ARG:NH1	1:B:391:SER:HA	1.72	1.03
1:B:111:ARG:HG2	1:B:111:ARG:HH11	1.20	1.03
1:B:372:ILE:CD1	1:B:384:ARG:HH11	1.71	1.03
1:B:372:ILE:HG12	1:B:384:ARG:NH1	1.75	1.02
1:A:367:THR:CB	1:A:387:HIS:HB2	1.89	1.01
1:B:23:VAL:HG11	1:B:43:LEU:CD2	1.90	1.01
1:B:399:ARG:O	1:B:403:LYS:HG3	1.61	1.00
1:B:39:TYR:O	1:B:43:LEU:HD13	1.62	0.99
1:A:399:ARG:O	1:A:403:LYS:HG3	1.65	0.96
1:A:51:THR:HG22	1:A:53:GLU:H	1.28	0.96
1:A:738:ARG:NH2	1:A:745:GLY:O	2.02	0.93
1:B:372:ILE:HD11	1:B:384:ARG:HH11	1.35	0.90
1:B:23:VAL:HG21	1:B:43:LEU:CD2	2.03	0.88
1:B:372:ILE:HD11	1:B:384:ARG:HD3	1.55	0.87
1:B:372:ILE:CG1	1:B:384:ARG:HH11	1.88	0.85
1:A:124:GLU:CG	7:A:2035:HOH:O	2.06	0.85
1:B:371:ARG:NH2	1:B:375:PRO:HA	1.92	0.85
1:A:367:THR:OG1	1:A:387:HIS:HB3	1.76	0.84
1:B:496:VAL:HG21	1:B:716:LEU:HD13	1.56	0.84
1:A:300:LEU:HB2	1:B:300:LEU:HD13	1.58	0.84
1:B:23:VAL:CG1	1:B:43:LEU:HD22	2.08	0.82
1:B:552:ARG:NH2	7:B:2189:HOH:O	2.11	0.82
1:B:371:ARG:CZ	1:B:375:PRO:HA	2.10	0.81
1:B:111:ARG:HH11	1:B:111:ARG:CG	1.93	0.81
1:B:589:ASP:OD2	1:B:612:ARG:NH1	2.16	0.79
1:B:372:ILE:CG1	1:B:384:ARG:NH1	2.43	0.79
1:B:372:ILE:HD11	1:B:384:ARG:CD	2.16	0.76
1:A:395:LEU:HD22	1:B:22:GLN:NE2	2.01	0.76
1:B:23:VAL:HG21	1:B:43:LEU:HD22	1.66	0.76
1:B:242:LEU:HD12	1:B:242:LEU:O	1.87	0.75
1:A:223:ARG:NH1	7:A:2085:HOH:O	2.18	0.75
1:B:23:VAL:HG21	1:B:43:LEU:HD23	1.69	0.74
1:B:399:ARG:NH1	2:C:32:GLU:OE2	2.21	0.74
1:A:399:ARG:O	1:A:403:LYS:CG	2.35	0.73
1:A:6:LEU:CD2	1:A:51:THR:OG1	2.38	0.72
1:A:125:VAL:O	7:A:2038:HOH:O	2.08	0.71
1:A:254:GLN:OE1	7:A:2101:HOH:O	2.09	0.71
1:A:395:LEU:HD22	1:B:22:GLN:HE22	1.56	0.70
1:B:39:TYR:C	1:B:43:LEU:HD13	2.12	0.70
1:B:372:ILE:HG12	1:B:384:ARG:HH12	1.53	0.69
1:B:223:ARG:HH11	1:B:391:SER:HA	1.57	0.69

Continued on next page...

Continued from previous page...

Atom-1	Atom-2	Interatomic distance (Å)	Clash overlap (Å)
1:B:387:HIS:HA	7:B:2135:HOH:O	1.93	0.69
1:B:411:LYS:NZ	1:B:575:GLU:OE2	2.26	0.68
1:B:613:LYS:O	1:B:614:THR:OG1	2.10	0.68
1:A:279:GLY:O	1:A:280:THR:OG1	2.11	0.68
1:B:23:VAL:CG1	1:B:43:LEU:CD2	2.67	0.67
1:A:738:ARG:NH1	7:A:2313:HOH:O	2.26	0.67
1:B:434:GLY:O	1:B:438:ARG:NH2	2.28	0.66
1:B:367:THR:OG1	7:B:2086:HOH:O	2.14	0.65
1:B:322:HIS:NE2	1:B:326:GLU:OE2	2.30	0.64
1:B:223:ARG:HH12	1:B:391:SER:HA	1.59	0.63
1:A:434:GLY:O	1:A:438:ARG:NH2	2.32	0.63
1:A:399:ARG:O	1:A:403:LYS:CD	2.47	0.63
1:B:451:ILE:CD1	1:B:716:LEU:HD11	2.28	0.63
1:A:300:LEU:CB	1:B:300:LEU:HD13	2.29	0.62
1:B:39:TYR:O	1:B:43:LEU:CD1	2.42	0.62
1:A:719:ASP:OD2	7:A:2308:HOH:O	2.15	0.62
1:A:51:THR:HG22	1:A:52:LEU:N	2.15	0.62
1:A:59:LEU:HD11	1:A:68:ILE:HD11	1.82	0.61
1:A:567:ALA:HB2	1:A:677:PRO:HB3	1.81	0.61
1:B:23:VAL:CG2	1:B:43:LEU:HD22	2.31	0.61
1:B:34:LEU:HD12	1:B:43:LEU:HD21	1.83	0.60
1:B:619:ARG:NH1	1:B:656:LEU:HD11	2.17	0.59
1:B:23:VAL:CG2	1:B:43:LEU:CD2	2.77	0.59
1:A:367:THR:HB	1:A:387:HIS:HB2	1.82	0.59
1:B:23:VAL:HG11	1:B:43:LEU:HD21	1.80	0.59
1:A:399:ARG:O	1:A:403:LYS:HE3	2.02	0.59
1:B:372:ILE:CD1	1:B:384:ARG:NH1	2.55	0.59
1:B:619:ARG:NH2	1:B:651:VAL:O	2.37	0.58
1:B:111:ARG:NH1	1:B:111:ARG:CG	2.58	0.58
1:B:270:LYS:HG3	1:B:281:VAL:HG11	1.86	0.58
1:B:372:ILE:HD11	1:B:384:ARG:CG	2.34	0.57
1:B:248:THR:O	7:B:2088:HOH:O	2.17	0.57
1:B:619:ARG:HH11	1:B:656:LEU:HD11	1.70	0.57
1:A:484:ARG:NH1	7:A:2205:HOH:O	2.26	0.55
1:A:51:THR:CG2	1:A:53:GLU:H	2.12	0.55
1:A:124:GLU:CD	7:A:2036:HOH:O	2.45	0.55
1:B:589:ASP:OD2	1:B:614:THR:OG1	2.25	0.55
1:A:403:LYS:HG3	7:A:2168:HOH:O	2.05	0.55
1:B:659:ASP:O	1:B:660:ALA:HB3	2.07	0.54
1:A:19:GLU:O	1:A:20:PRO:C	2.45	0.54
1:A:34:LEU:HD12	1:A:43:LEU:HD21	1.90	0.54

Continued on next page...

Continued from previous page...

Atom-1	Atom-2	Interatomic distance (Å)	Clash overlap (Å)
1:B:111:ARG:HG2	1:B:111:ARG:NH1	2.02	0.54
1:A:438:ARG:NH1	7:A:2189:HOH:O	2.41	0.54
1:B:622:LEU:HD13	1:B:624:PHE:CZ	2.43	0.54
1:A:124:GLU:OE1	7:A:2036:HOH:O	2.18	0.53
1:A:384:ARG:HD3	1:A:405:LYS:HD3	1.90	0.53
1:B:498:SER:HA	1:B:716:LEU:HD23	1.90	0.53
1:A:399:ARG:NH2	2:D:32:GLU:OE2	2.42	0.53
1:A:65:PRO:HA	1:A:68:ILE:HD12	1.91	0.53
1:B:479:ASP:O	7:B:2168:HOH:O	2.19	0.53
1:B:496:VAL:CG2	1:B:716:LEU:HD13	2.34	0.52
1:A:20:PRO:O	1:A:37:GLN:NE2	2.42	0.52
1:B:621:ILE:HD13	1:B:645:GLY:CA	2.40	0.52
1:B:661:THR:O	1:B:665:ILE:HG22	2.08	0.52
1:B:387:HIS:NE2	1:B:402:LEU:O	2.43	0.52
1:B:244:THR:O	1:B:244:THR:HG23	2.10	0.51
1:B:23:VAL:CB	1:B:43:LEU:HD22	2.40	0.51
1:B:544:GLN:NE2	7:B:2197:HOH:O	2.37	0.51
1:B:702:MET:O	1:B:706:ASN:ND2	2.43	0.51
1:B:387:HIS:HB3	1:B:405:LYS:HA	1.93	0.51
1:B:4:THR:N	1:B:5:PRO:CD	2.74	0.50
1:B:552:ARG:HD2	1:B:740:PHE:CE2	2.47	0.50
1:B:621:ILE:HD13	1:B:645:GLY:HA2	1.93	0.50
1:B:352:VAL:O	1:B:356:GLN:HG3	2.11	0.50
1:B:41:GLN:NE2	1:B:62:GLU:OE1	2.44	0.49
1:B:507:LEU:HD11	1:B:716:LEU:CD1	2.43	0.49
1:A:403:LYS:CG	7:A:2168:HOH:O	2.60	0.49
1:B:372:ILE:CD1	1:B:384:ARG:HD3	2.36	0.49
1:B:333:ARG:HG3	1:B:539:GLU:CG	2.43	0.48
1:B:548:GLU:O	1:B:552:ARG:HG2	2.13	0.48
1:B:322:HIS:CD2	1:B:326:GLU:OE2	2.66	0.48
1:A:399:ARG:O	1:A:403:LYS:CE	2.62	0.48
1:A:51:THR:HB	1:A:54:GLN:H	1.79	0.48
1:A:276:THR:HG22	1:A:277:ALA:N	2.29	0.47
1:B:398:LEU:O	1:B:402:LEU:N	2.48	0.47
1:A:367:THR:HG21	1:A:387:HIS:HD2	1.80	0.47
1:B:243:PRO:O	1:B:244:THR:HB	2.14	0.47
1:A:576:PRO:O	1:A:580:GLN:HG3	2.14	0.46
1:B:220:SER:N	1:B:223:ARG:HH21	2.13	0.46
1:B:702:MET:HA	1:B:705:VAL:HG12	1.97	0.46
1:A:51:THR:CG2	1:A:52:LEU:N	2.77	0.46
1:A:352:VAL:O	1:A:356:GLN:HG3	2.16	0.46

Continued on next page...

Continued from previous page...

Atom-1	Atom-2	Interatomic distance (Å)	Clash overlap (Å)
1:B:359:ILE:HA	1:B:366:VAL:HG22	1.95	0.46
1:B:583:GLN:OE1	1:B:586:ARG:NH1	2.49	0.46
1:A:124:GLU:OE2	7:A:2036:HOH:O	2.19	0.46
1:A:115:THR:HG23	1:A:151:THR:HG21	1.97	0.46
1:A:298:LEU:HD21	1:B:291:ILE:HG13	1.97	0.46
1:A:275:ALA:O	1:A:276:THR:CB	2.64	0.45
1:A:72:LEU:O	1:A:81:LEU:HD11	2.17	0.45
1:B:552:ARG:HD2	1:B:740:PHE:CD2	2.52	0.45
1:B:213:GLY:HA3	1:B:389:PHE:CE2	2.52	0.45
1:B:485:PHE:CE1	1:B:491:ILE:HD13	2.52	0.45
1:B:274:ASN:HD21	1:B:281:VAL:HG12	1.82	0.44
1:B:289:LYS:NZ	7:B:2097:HOH:O	2.50	0.44
1:A:6:LEU:HD21	1:A:51:THR:OG1	2.16	0.44
1:A:702:MET:HA	1:A:705:VAL:HG12	1.99	0.44
1:B:23:VAL:CG2	1:B:43:LEU:HD23	2.44	0.44
1:B:205:ASP:OD2	1:B:313:THR:OG1	2.35	0.43
1:A:274:ASN:O	1:A:278:PRO:HG3	2.18	0.43
1:B:303:HIS:HB3	1:B:363:THR:HG22	2.00	0.43
1:B:654:GLU:OE1	1:B:654:GLU:N	2.49	0.43
1:A:110:LEU:O	7:A:2027:HOH:O	2.21	0.42
1:A:275:ALA:O	1:A:276:THR:HB	2.18	0.42
1:B:491:ILE:HD11	1:B:493:TRP:CZ2	2.54	0.42
1:A:183:VAL:HG22	1:A:192:LEU:HD12	2.00	0.42
1:B:51:THR:HG22	1:B:52:LEU:N	2.35	0.42
1:B:663:TRP:CE3	1:B:667:GLU:HG3	2.53	0.42
1:A:299:ASP:OD1	1:A:300:LEU:N	2.52	0.42
1:A:51:THR:HG22	1:A:53:GLU:N	2.12	0.42
1:B:353:GLN:HA	1:B:356:GLN:HG3	2.02	0.42
1:A:597:LEU:HD11	1:A:607:ALA:HB2	2.01	0.42
1:A:476:VAL:HG11	1:A:478:HIS:CE1	2.54	0.41
1:A:491:ILE:HD12	1:A:508:PRO:HB3	2.02	0.41
1:B:585:TYR:OH	1:B:641:VAL:HG23	2.20	0.41
1:A:76:ALA:HB2	1:A:81:LEU:HD12	2.02	0.41
1:A:6:LEU:HD23	1:A:51:THR:OG1	2.19	0.41
1:B:32:HIS:CD2	2:D:33:ALA:HA	2.55	0.41
1:A:26:LEU:CD1	1:B:242:LEU:HD11	2.50	0.41
1:B:39:TYR:CA	1:B:43:LEU:HD13	2.51	0.41
1:B:584:PHE:CZ	1:B:588:ASN:ND2	2.89	0.41
1:B:530:ASN:OD1	1:B:552:ARG:HG3	2.21	0.41
1:A:297:ILE:HD11	1:A:299:ASP:HB3	2.03	0.41
1:A:467:ARG:HD2	1:A:483:GLN:HA	2.01	0.41

Continued on next page...

Continued from previous page...

Atom-1	Atom-2	Interatomic distance (Å)	Clash overlap (Å)
1:A:500:THR:HG22	1:A:705:VAL:CG2	2.51	0.41
1:B:657:LYS:O	1:B:658:SER:OG	2.25	0.41
1:B:372:ILE:HD11	1:B:384:ARG:NH1	2.18	0.41
1:B:31:ASN:OD1	7:B:2012:HOH:O	2.22	0.40
1:A:373:THR:HG21	1:A:380:VAL:HG12	2.03	0.40
1:B:274:ASN:ND2	1:B:281:VAL:HG12	2.37	0.40
1:B:23:VAL:HG13	1:B:34:LEU:HB2	2.03	0.40
1:B:387:HIS:CE1	1:B:402:LEU:HA	2.57	0.40
1:A:367:THR:OG1	1:A:387:HIS:CG	2.68	0.40
1:A:55:ILE:CG2	1:A:56:VAL:N	2.85	0.40
1:B:297:ILE:HG13	1:B:298:LEU:N	2.36	0.40

There are no symmetry-related clashes.

5.3 Torsion angles

5.3.1 Protein backbone

In the following table, the Percentiles column shows the percent Ramachandran outliers of the chain as a percentile score with respect to all X-ray entries followed by that with respect to entries of similar resolution.

The Analysed column shows the number of residues for which the backbone conformation was analysed, and the total number of residues.

Mol	Chain	Analysed	Favoured	Allowed	Outliers	Percentiles	
1	A	740/775 (96%)	713 (96%)	26 (4%)	1 (0%)	53	53
1	B	747/775 (96%)	723 (97%)	22 (3%)	2 (0%)	43	38
2	C	13/64 (20%)	13 (100%)	0	0	100	100
2	D	12/64 (19%)	12 (100%)	0	0	100	100
All	All	1512/1678 (90%)	1461 (97%)	48 (3%)	3 (0%)	49	47

All (3) Ramachandran outliers are listed below:

Mol	Chain	Res	Type
1	A	276	THR
1	B	243	PRO
1	B	244	THR

5.3.2 Protein sidechains ⓘ

In the following table, the Percentiles column shows the percent sidechain outliers of the chain as a percentile score with respect to all X-ray entries followed by that with respect to entries of similar resolution.

The Analysed column shows the number of residues for which the sidechain conformation was analysed, and the total number of residues.

Mol	Chain	Analysed	Rotameric	Outliers	Percentiles	
1	A	638/661 (96%)	633 (99%)	5 (1%)	83	86
1	B	644/661 (97%)	639 (99%)	5 (1%)	83	86
2	C	12/51 (24%)	12 (100%)	0	100	100
2	D	12/51 (24%)	12 (100%)	0	100	100
All	All	1306/1424 (92%)	1296 (99%)	10 (1%)	83	86

All (10) residues with a non-rotameric sidechain are listed below:

Mol	Chain	Res	Type
1	A	182	LEU
1	A	276	THR
1	A	387	HIS
1	A	740	PHE
1	A	773	MET
1	B	74	ARG
1	B	226	GLN
1	B	241	CYS
1	B	244	THR
1	B	259	PHE

Some sidechains can be flipped to improve hydrogen bonding and reduce clashes. All (13) such sidechains are listed below:

Mol	Chain	Res	Type
1	A	12	HIS
1	A	32	HIS
1	A	381	HIS
1	A	387	HIS
1	A	478	HIS
1	B	12	HIS
1	B	22	GLN
1	B	32	HIS
1	B	274	ASN

Continued on next page...

Continued from previous page...

Mol	Chain	Res	Type
1	B	356	GLN
1	B	404	HIS
1	B	522	HIS
1	B	739	HIS

5.3.3 RNA [i](#)

There are no RNA molecules in this entry.

5.4 Non-standard residues in protein, DNA, RNA chains [i](#)

There are no non-standard protein/DNA/RNA residues in this entry.

5.5 Carbohydrates [i](#)

There are no carbohydrates in this entry.

5.6 Ligand geometry [i](#)

Of 12 ligands modelled in this entry, 8 are monoatomic - leaving 4 for Mogul analysis.

In the following table, the Counts columns list the number of bonds (or angles) for which Mogul statistics could be retrieved, the number of bonds (or angles) that are observed in the model and the number of bonds (or angles) that are defined in the Chemical Component Dictionary. The Link column lists molecule types, if any, to which the group is linked. The Z score for a bond length (or angle) is the number of standard deviations the observed value is removed from the expected value. A bond length (or angle) with $|Z| > 2$ is considered an outlier worth inspection. RMSZ is the root-mean-square of all Z scores of the bond lengths (or angles).

Mol	Type	Chain	Res	Link	Bond lengths			Bond angles		
					Counts	RMSZ	$\# Z > 2$	Counts	RMSZ	$\# Z > 2$
6	PO4	A	1779	5	4,4,4	0.55	0	6,6,6	0.47	0
4	ADP	A	780	5	25,29,29	1.15	2 (8%)	25,45,45	1.81	3 (12%)
6	PO4	B	1779	5	4,4,4	0.81	0	6,6,6	0.61	0
4	ADP	B	780	5	25,29,29	1.07	2 (8%)	25,45,45	1.79	2 (8%)

In the following table, the Chirals column lists the number of chiral outliers, the number of chiral centers analysed, the number of these observed in the model and the number defined in the Chemical Component Dictionary. Similar counts are reported in the Torsion and Rings columns. '-' means no outliers of that kind were identified.

Mol	Type	Chain	Res	Link	Chirals	Torsions	Rings
6	PO4	A	1779	5	-	0/0/0/0	0/0/0/0
4	ADP	A	780	5	-	0/12/32/32	0/3/3/3
6	PO4	B	1779	5	-	0/0/0/0	0/0/0/0
4	ADP	B	780	5	-	0/12/32/32	0/3/3/3

All (4) bond length outliers are listed below:

Mol	Chain	Res	Type	Atoms	Z	Observed(Å)	Ideal(Å)
4	B	780	ADP	C2-N3	2.04	1.35	1.32
4	A	780	ADP	PB-O3A	2.39	1.63	1.60
4	B	780	ADP	C5-C4	2.98	1.47	1.40
4	A	780	ADP	C5-C4	3.02	1.47	1.40

All (5) bond angle outliers are listed below:

Mol	Chain	Res	Type	Atoms	Z	Observed(°)	Ideal(°)
4	A	780	ADP	N3-C2-N1	-7.14	122.75	128.86
4	B	780	ADP	N3-C2-N1	-6.93	122.93	128.86
4	A	780	ADP	C4-C5-N7	-2.72	106.78	109.41
4	B	780	ADP	C4-C5-N7	-2.32	107.17	109.41
4	A	780	ADP	C2-N1-C6	2.50	123.00	118.75

There are no chirality outliers.

There are no torsion outliers.

There are no ring outliers.

No monomer is involved in short contacts.

5.7 Other polymers [i](#)

There are no such residues in this entry.

5.8 Polymer linkage issues [i](#)

There are no chain breaks in this entry.

6 Fit of model and data

6.1 Protein, DNA and RNA chains

In the following table, the column labelled ‘#RSRZ > 2’ contains the number (and percentage) of RSRZ outliers, followed by percent RSRZ outliers for the chain as percentile scores relative to all X-ray entries and entries of similar resolution. The OWAB column contains the minimum, median, 95th percentile and maximum values of the occupancy-weighted average B-factor per residue. The column labelled ‘Q < 0.9’ lists the number of (and percentage) of residues with an average occupancy less than 0.9.

Mol	Chain	Analysed	<RSRZ>	#RSRZ>2	OWAB(Å ²)	Q<0.9
1	A	748/775 (96%)	0.29	57 (7%) 14 17	31, 52, 97, 145	0
1	B	753/775 (97%)	0.04	18 (2%) 59 65	34, 56, 86, 108	0
2	C	15/64 (23%)	1.60	3 (20%) 1 1	80, 88, 108, 119	0
2	D	14/64 (21%)	0.51	2 (14%) 2 3	57, 66, 88, 105	0
All	All	1530/1678 (91%)	0.18	80 (5%) 27 33	31, 54, 92, 145	0

All (80) RSRZ outliers are listed below:

Mol	Chain	Res	Type	RSRZ
1	A	50	TYR	6.4
1	A	7	LEU	6.1
1	A	54	GLN	6.0
2	C	21	GLN	5.9
1	B	282	PHE	5.5
1	A	77	GLU	5.0
1	A	71	VAL	4.9
1	A	55	ILE	4.8
1	A	59	LEU	4.8
1	A	81	LEU	4.7
1	B	388	SER	4.5
1	A	51	THR	4.4
1	B	404	HIS	4.3
1	A	49	GLN	4.1
1	A	56	VAL	4.0
1	A	52	LEU	3.9
1	A	403	LYS	3.9
1	B	387	HIS	3.9
2	D	21	GLN	3.9
1	A	68	ILE	3.9
1	A	387	HIS	3.9

Continued on next page...

Continued from previous page...

Mol	Chain	Res	Type	RSRZ
1	A	72	LEU	3.9
2	C	22	LEU	3.8
1	A	8	GLN	3.8
1	A	6	LEU	3.7
1	A	57	GLU	3.7
1	A	65	PRO	3.7
1	A	70	TYR	3.6
1	A	276	THR	3.6
1	A	474	ALA	3.5
1	A	86	PRO	3.4
1	A	67	TYR	3.4
1	A	73	GLU	3.3
1	B	61	GLY	3.2
1	A	84	ALA	3.2
2	D	22	LEU	3.2
1	A	83	GLU	3.1
1	A	82	THR	3.0
1	A	58	LYS	2.9
1	A	36	GLY	2.9
1	A	46	LEU	2.9
1	A	279	GLY	2.8
1	B	62	GLU	2.8
1	A	61	GLY	2.8
1	B	396	ARG	2.8
1	A	60	ASP	2.8
1	A	64	PRO	2.7
1	A	401	THR	2.7
1	B	297	ILE	2.7
1	A	43	LEU	2.7
1	A	62	GLU	2.7
1	A	9	ILE	2.7
1	B	19	GLU	2.7
1	A	108	GLU	2.6
1	B	614	THR	2.6
1	A	45	LEU	2.6
1	A	278	PRO	2.5
2	C	26	LEU	2.5
1	B	448	ASP	2.5
1	A	336	GLN	2.4
1	A	85	ALA	2.4
1	A	175	GLU	2.4
1	A	63	VAL	2.4

Continued on next page...

Continued from previous page...

Mol	Chain	Res	Type	RSRZ
1	B	391	SER	2.4
1	B	647	GLU	2.3
1	B	650	LYS	2.3
1	A	75	LEU	2.3
1	A	66	GLU	2.3
1	A	391	SER	2.2
1	B	371	ARG	2.2
1	A	329	LYS	2.2
1	B	329	LYS	2.2
1	A	42	ILE	2.2
1	A	79	GLY	2.2
1	B	276	THR	2.2
1	B	616	SER	2.2
1	A	78	LYS	2.1
1	A	48	GLY	2.1
1	A	19	GLU	2.1
1	A	76	ALA	2.1

6.2 Non-standard residues in protein, DNA, RNA chains [i](#)

There are no non-standard protein/DNA/RNA residues in this entry.

6.3 Carbohydrates [i](#)

There are no carbohydrates in this entry.

6.4 Ligands [i](#)

In the following table, the Atoms column lists the number of modelled atoms in the group and the number defined in the chemical component dictionary. The B-factors column lists the minimum, median, 95th percentile and maximum values of B factors of atoms in the group. The column labelled 'Q< 0.9' lists the number of atoms with occupancy less than 0.9.

Mol	Type	Chain	Res	Atoms	RSCC	RSR	B-factors(\AA^2)	Q<0.9
3	ZN	B	776	1/1	0.80	0.33	138,138,138,138	0
5	MG	A	1778	1/1	0.91	0.09	42,42,42,42	0
5	MG	B	1778	1/1	0.91	0.06	42,42,42,42	0
6	PO4	B	1779	5/5	0.93	0.12	53,57,62,73	0
4	ADP	B	780	27/27	0.95	0.11	46,56,65,66	0
5	MG	B	1776	1/1	0.96	0.05	55,55,55,55	0

Continued on next page...

Continued from previous page...

Mol	Type	Chain	Res	Atoms	RSCC	RSR	B-factors(\AA^2)	Q<0.9
4	ADP	A	780	27/27	0.96	0.12	32,43,53,57	0
5	MG	A	1777	1/1	0.97	0.11	40,40,40,40	0
5	MG	B	1777	1/1	0.97	0.08	56,56,56,56	0
6	PO4	A	1779	5/5	0.98	0.09	52,52,55,59	0
5	MG	A	1776	1/1	0.98	0.06	40,40,40,40	0
3	ZN	A	776	1/1	1.00	0.14	54,54,54,54	0

6.5 Other polymers [i](#)

There are no such residues in this entry.