



# Full wwPDB X-ray Structure Validation Report ⓘ

Dec 30, 2019 – 06:51 PM EST

PDB ID : 6V2T  
Title : X-ray structure of a sugar N-formyltransferase from Shewanella sp FDAAR-GOS\_354  
Authors : Girardi, N.M.; Thoden, J.B.; Holden, H.M.  
Deposited on : 2019-11-25  
Resolution : 1.90 Å(reported)

This is a Full wwPDB X-ray Structure Validation Report for a publicly released PDB entry.

We welcome your comments at [validation@mail.wwpdb.org](mailto:validation@mail.wwpdb.org)

A user guide is available at

<https://www.wwpdb.org/validation/2017/XrayValidationReportHelp>

with specific help available everywhere you see the ⓘ symbol.

---

The following versions of software and data (see [references ⓘ](#)) were used in the production of this report:

MolProbity : 4.02b-467  
Mogul : 1.8.0 (224370), CSD as540be (2019)  
Xtriage (Phenix) : 1.13  
EDS : 2.4  
buster-report : 1.1.7 (2018)  
Percentile statistics : 20171227.v01 (using entries in the PDB archive December 27th 2017)  
Refmac : 5.8.0158  
CCP4 : 7.0 (Gargrove)  
Ideal geometry (proteins) : Engh & Huber (2001)  
Ideal geometry (DNA, RNA) : Parkinson et al. (1996)  
Validation Pipeline (wwPDB-VP) : 2.4

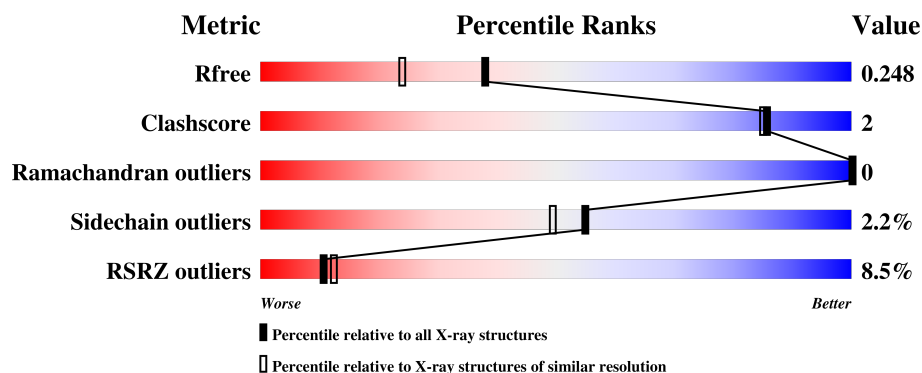
# 1 Overall quality at a glance

The following experimental techniques were used to determine the structure:

*X-RAY DIFFRACTION*

The reported resolution of this entry is 1.90 Å.

Percentile scores (ranging between 0-100) for global validation metrics of the entry are shown in the following graphic. The table shows the number of entries on which the scores are based.



Metric	Whole archive (#Entries)	Similar resolution (#Entries, resolution range(Å))
$R_{free}$	111664	5502 (1.90-1.90)
Clashscore	122126	6115 (1.90-1.90)
Ramachandran outliers	120053	6048 (1.90-1.90)
Sidechain outliers	120020	6048 (1.90-1.90)
RSRZ outliers	108989	5379 (1.90-1.90)

The table below summarises the geometric issues observed across the polymeric chains and their fit to the electron density. The red, orange, yellow and green segments on the lower bar indicate the fraction of residues that contain outliers for  $\geq 3$ , 2, 1 and 0 types of geometric quality criteria. A grey segment represents the fraction of residues that are not modelled. The numeric value for each fraction is indicated below the corresponding segment, with a dot representing fractions  $\leq 5\%$ . The upper red bar (where present) indicates the fraction of residues that have poor fit to the electron density. The numeric value is given above the bar.

Mol	Chain	Length	Quality of chain
1	A	267	<div> <div>7%</div> <div>86%</div> <div>6%</div> <div>8%</div> </div>
1	B	267	<div> <div>9%</div> <div>86%</div> <div>7%</div> <div>6%</div> </div>

## 2 Entry composition

There are 7 unique types of molecules in this entry. The entry contains 4441 atoms, of which 0 are hydrogens and 0 are deuteriums.

In the tables below, the ZeroOcc column contains the number of atoms modelled with zero occupancy, the AltConf column contains the number of residues with at least one atom in alternate conformation and the Trace column contains the number of residues modelled with at most 2 atoms.

- Molecule 1 is a protein called dTDP-4-amino-4,6-dideoxyglucose formyltransferase.

Mol	Chain	Residues	Atoms					ZeroOcc	AltConf	Trace
1	A	246	Total	C	N	O	S	0	3	0
			1985	1270	341	366	8			
1	B	251	Total	C	N	O	S	0	2	0
			2035	1305	348	374	8			

There are 44 discrepancies between the modelled and reference sequences:

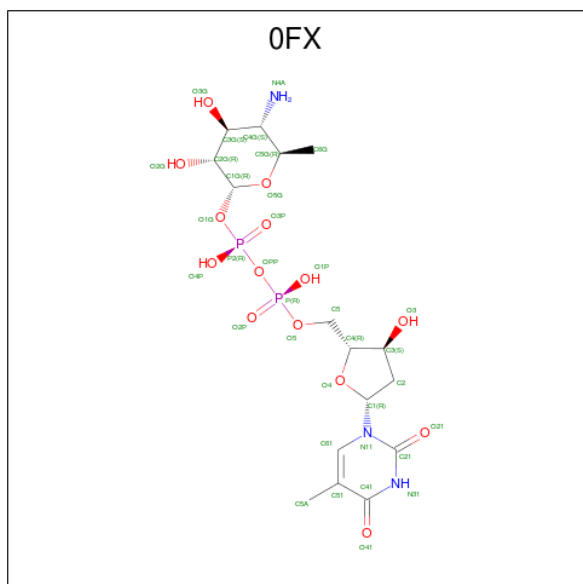
Chain	Residue	Modelled	Actual	Comment	Reference
A	-21	MET	-	initiating methionine	UNP A0A1Z4A6S6
A	-20	GLY	-	expression tag	UNP A0A1Z4A6S6
A	-19	SER	-	expression tag	UNP A0A1Z4A6S6
A	-18	SER	-	expression tag	UNP A0A1Z4A6S6
A	-17	HIS	-	expression tag	UNP A0A1Z4A6S6
A	-16	HIS	-	expression tag	UNP A0A1Z4A6S6
A	-15	HIS	-	expression tag	UNP A0A1Z4A6S6
A	-14	HIS	-	expression tag	UNP A0A1Z4A6S6
A	-13	HIS	-	expression tag	UNP A0A1Z4A6S6
A	-12	HIS	-	expression tag	UNP A0A1Z4A6S6
A	-11	SER	-	expression tag	UNP A0A1Z4A6S6
A	-10	SER	-	expression tag	UNP A0A1Z4A6S6
A	-9	GLU	-	expression tag	UNP A0A1Z4A6S6
A	-8	ASN	-	expression tag	UNP A0A1Z4A6S6
A	-7	LEU	-	expression tag	UNP A0A1Z4A6S6
A	-6	TYR	-	expression tag	UNP A0A1Z4A6S6
A	-5	PHE	-	expression tag	UNP A0A1Z4A6S6
A	-4	GLN	-	expression tag	UNP A0A1Z4A6S6
A	-3	GLY	-	expression tag	UNP A0A1Z4A6S6
A	-2	GLY	-	expression tag	UNP A0A1Z4A6S6
A	-1	GLY	-	expression tag	UNP A0A1Z4A6S6
A	0	HIS	-	expression tag	UNP A0A1Z4A6S6
B	-21	MET	-	initiating methionine	UNP A0A1Z4A6S6
B	-20	GLY	-	expression tag	UNP A0A1Z4A6S6
B	-19	SER	-	expression tag	UNP A0A1Z4A6S6

*Continued on next page...*

Continued from previous page...

Chain	Residue	Modelled	Actual	Comment	Reference
B	-18	SER	-	expression tag	UNP A0A1Z4A6S6
B	-17	HIS	-	expression tag	UNP A0A1Z4A6S6
B	-16	HIS	-	expression tag	UNP A0A1Z4A6S6
B	-15	HIS	-	expression tag	UNP A0A1Z4A6S6
B	-14	HIS	-	expression tag	UNP A0A1Z4A6S6
B	-13	HIS	-	expression tag	UNP A0A1Z4A6S6
B	-12	HIS	-	expression tag	UNP A0A1Z4A6S6
B	-11	SER	-	expression tag	UNP A0A1Z4A6S6
B	-10	SER	-	expression tag	UNP A0A1Z4A6S6
B	-9	GLU	-	expression tag	UNP A0A1Z4A6S6
B	-8	ASN	-	expression tag	UNP A0A1Z4A6S6
B	-7	LEU	-	expression tag	UNP A0A1Z4A6S6
B	-6	TYR	-	expression tag	UNP A0A1Z4A6S6
B	-5	PHE	-	expression tag	UNP A0A1Z4A6S6
B	-4	GLN	-	expression tag	UNP A0A1Z4A6S6
B	-3	GLY	-	expression tag	UNP A0A1Z4A6S6
B	-2	GLY	-	expression tag	UNP A0A1Z4A6S6
B	-1	GLY	-	expression tag	UNP A0A1Z4A6S6
B	0	HIS	-	expression tag	UNP A0A1Z4A6S6

- Molecule 2 is dTDP-4-amino-4,6-dideoxyglucose (three-letter code: 0FX) (formula:  $C_{16}H_{27}N_3O_{14}P_2$ ) (labeled as "Ligand of Interest" by author).



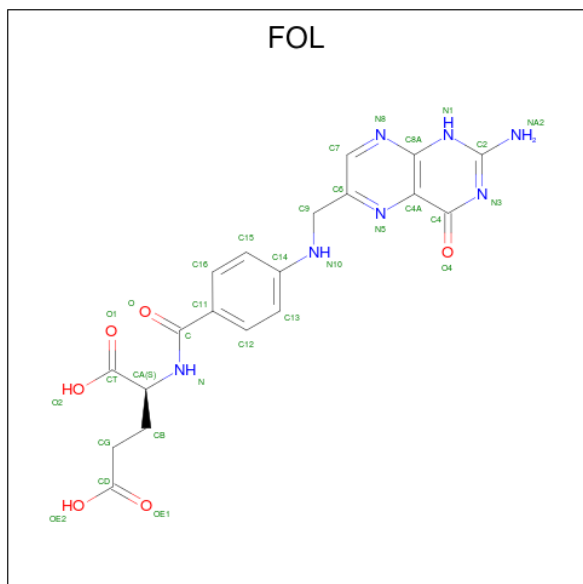
Mol	Chain	Residues	Atoms				ZeroOcc	AltConf
2	A	1	Total	C	N	O	P	
			35	16	3	14	2	

Continued on next page...

Continued from previous page...

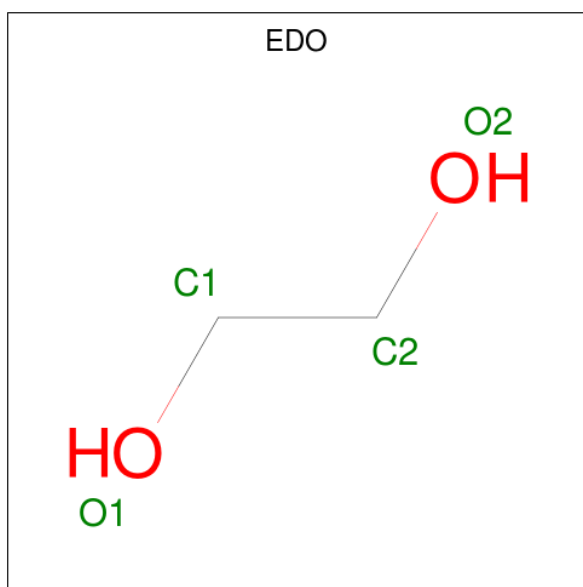
Mol	Chain	Residues	Atoms					ZeroOcc	AltConf
2	B	1	Total	C	N	O	P	0	0
			35	16	3	14	2		

- Molecule 3 is FOLIC ACID (three-letter code: FOL) (formula:  $C_{19}H_{19}N_7O_6$ ).



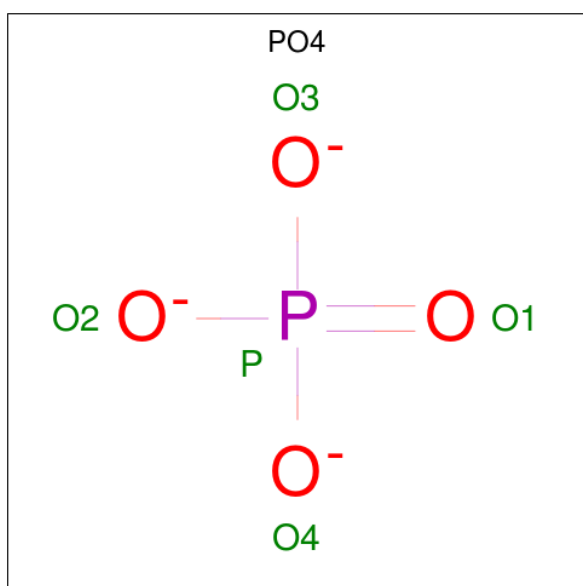
Mol	Chain	Residues	Atoms				ZeroOcc	AltConf
3	A	1	Total 23	C 14	N 7	O 2	0	0
3	B	1	Total 23	C 14	N 7	O 2	0	0

- Molecule 4 is 1,2-ETHANEDIOL (three-letter code: EDO) (formula:  $\text{C}_2\text{H}_6\text{O}_2$ ).



Mol	Chain	Residues	Atoms			ZeroOcc	AltConf
4	A	1	Total	C	O	0	0
			4	2	2		
4	B	1	Total	C	O	0	0
			4	2	2		

- Molecule 5 is PHOSPHATE ION (three-letter code: PO4) (formula:  $\text{O}_4\text{P}$ ).



Mol	Chain	Residues	Atoms			ZeroOcc	AltConf
5	A	1	Total	O	P	0	0
			5	4	1		

- Molecule 6 is SODIUM ION (three-letter code: NA) (formula: Na).

Mol	Chain	Residues	Atoms		ZeroOcc	AltConf
6	B	1	Total 1	Na 1	0	0

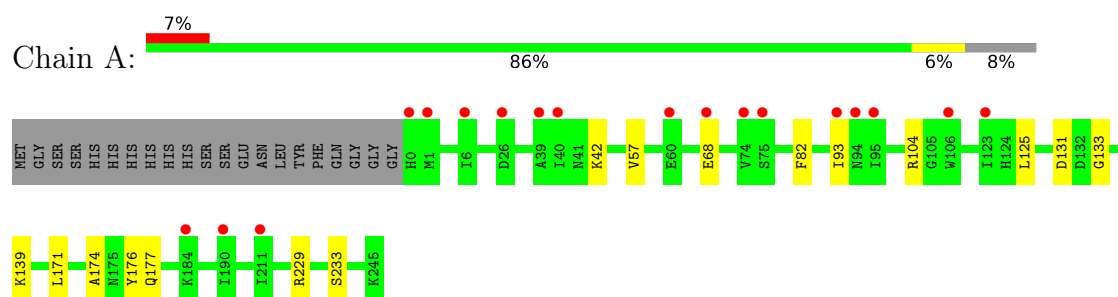
- Molecule 7 is water.

Mol	Chain	Residues	Atoms		ZeroOcc	AltConf
7	A	159	Total 159	O 159	0	0
7	B	132	Total 132	O 132	0	0

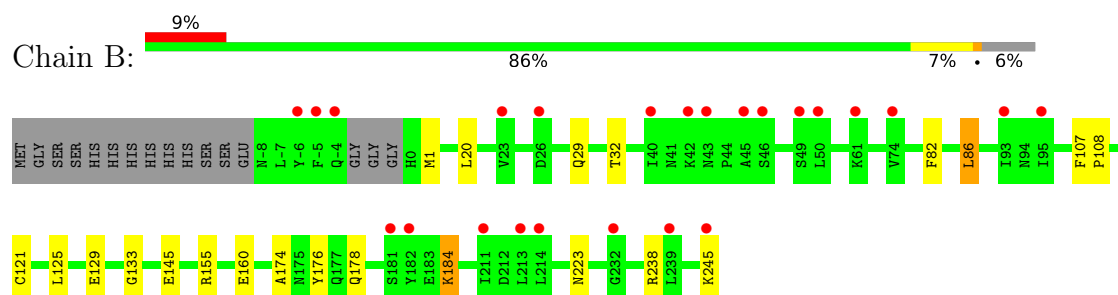
### 3 Residue-property plots [i](#)

These plots are drawn for all protein, RNA and DNA chains in the entry. The first graphic for a chain summarises the proportions of the various outlier classes displayed in the second graphic. The second graphic shows the sequence view annotated by issues in geometry and electron density. Residues are color-coded according to the number of geometric quality criteria for which they contain at least one outlier: green = 0, yellow = 1, orange = 2 and red = 3 or more. A red dot above a residue indicates a poor fit to the electron density ( $RSRZ > 2$ ). Stretches of 2 or more consecutive residues without any outlier are shown as a green connector. Residues present in the sample, but not in the model, are shown in grey.

- Molecule 1: dTDP-4-amino-4,6-dideoxyglucose formyltransferase



- Molecule 1: dTDP-4-amino-4,6-dideoxyglucose formyltransferase





## 4 Data and refinement statistics

Property	Value	Source
Space group	C 2 2 21	Depositor
Cell constants a, b, c, $\alpha$ , $\beta$ , $\gamma$	78.97Å 202.47Å 74.44Å 90.00° 90.00° 90.00°	Depositor
Resolution (Å)	27.10 – 1.90 27.08 – 1.90	Depositor EDS
% Data completeness (in resolution range)	94.6 (27.10-1.90) 94.6 (27.08-1.90)	Depositor EDS
$R_{merge}$	(Not available)	Depositor
$R_{sym}$	0.03	Depositor
$\langle I/\sigma(I) \rangle$ <sup>1</sup>	9.74 (at 1.89Å)	Xtriage
Refinement program	REFMAC 5.8.0238	Depositor
R, $R_{free}$	0.184 , 0.245 0.194 , 0.248	Depositor DCC
$R_{free}$ test set	2257 reflections (5.00%)	wwPDB-VP
Wilson B-factor (Å <sup>2</sup> )	32.8	Xtriage
Anisotropy	0.094	Xtriage
Bulk solvent $k_{sol}$ (e/Å <sup>3</sup> ), $B_{sol}$ (Å <sup>2</sup> )	0.36 , 46.4	EDS
L-test for twinning <sup>2</sup>	$\langle  L  \rangle = 0.48$ , $\langle L^2 \rangle = 0.31$	Xtriage
Estimated twinning fraction	No twinning to report.	Xtriage
$F_o, F_c$ correlation	0.96	EDS
Total number of atoms	4441	wwPDB-VP
Average B, all atoms (Å <sup>2</sup> )	40.0	wwPDB-VP

Xtriage's analysis on translational NCS is as follows: *The largest off-origin peak in the Patterson function is 4.83% of the height of the origin peak. No significant pseudotranslation is detected.*

<sup>1</sup>Intensities estimated from amplitudes.

<sup>2</sup>Theoretical values of  $\langle |L| \rangle$ ,  $\langle L^2 \rangle$  for acentric reflections are 0.5, 0.333 respectively for untwinned datasets, and 0.375, 0.2 for perfectly twinned datasets.

## 5 Model quality [i](#)

### 5.1 Standard geometry [i](#)

Bond lengths and bond angles in the following residue types are not validated in this section: FOL, NA, PO4, EDO, OFX

The Z score for a bond length (or angle) is the number of standard deviations the observed value is removed from the expected value. A bond length (or angle) with  $|Z| > 5$  is considered an outlier worth inspection. RMSZ is the root-mean-square of all Z scores of the bond lengths (or angles).

Mol	Chain	Bond lengths		Bond angles	
		RMSZ	$\# Z  > 5$	RMSZ	$\# Z  > 5$
1	A	0.71	0/2038	0.82	0/2765
1	B	0.71	0/2086	0.82	1/2825 (0.0%)
All	All	0.71	0/4124	0.82	1/5590 (0.0%)

There are no bond length outliers.

All (1) bond angle outliers are listed below:

Mol	Chain	Res	Type	Atoms	Z	Observed(°)	Ideal(°)
1	B	155	ARG	NE-CZ-NH1	5.09	122.85	120.30

There are no chirality outliers.

There are no planarity outliers.

### 5.2 Too-close contacts [i](#)

In the following table, the Non-H and H(model) columns list the number of non-hydrogen atoms and hydrogen atoms in the chain respectively. The H(added) column lists the number of hydrogen atoms added and optimized by MolProbity. The Clashes column lists the number of clashes within the asymmetric unit, whereas Symm-Clashes lists symmetry related clashes.

Mol	Chain	Non-H	H(model)	H(added)	Clashes	Symm-Clashes
1	A	1985	0	1977	7	0
1	B	2035	0	2025	13	0
2	A	35	0	26	0	0
2	B	35	0	26	0	0
3	A	23	0	11	1	0
3	B	23	0	11	1	0
4	A	4	0	6	0	0
4	B	4	0	6	0	0

*Continued on next page...*

*Continued from previous page...*

Mol	Chain	Non-H	H(model)	H(added)	Clashes	Symm-Clashes
5	A	5	0	0	0	0
6	B	1	0	0	0	0
7	A	159	0	0	1	0
7	B	132	0	0	2	0
All	All	4441	0	4088	20	0

The all-atom clashscore is defined as the number of clashes found per 1000 atoms (including hydrogen atoms). The all-atom clashscore for this structure is 2.

All (20) close contacts within the same asymmetric unit are listed below, sorted by their clash magnitude.

Atom-1	Atom-2	Interatomic distance (Å)	Clash overlap (Å)
1:B:82:PHE:H	3:B:302:FOL:HN1	1.21	0.87
1:A:82:PHE:H	3:A:302:FOL:HN1	1.25	0.83
1:A:229[A]:ARG:NH1	7:A:401:HOH:O	2.25	0.68
1:B:245:LYS:OXT	7:B:401:HOH:O	2.14	0.64
1:B:178:GLN:HG3	1:B:178:GLN:O	2.00	0.62
1:B:1:MET:SD	1:B:32:THR:HG23	2.40	0.62
1:B:178:GLN:HG3	7:B:403:HOH:O	2.00	0.60
1:B:121:CYS:SG	1:B:160:GLU:HG2	2.44	0.58
1:B:174:ALA:HA	1:B:176:TYR:CE2	2.44	0.52
1:B:82:PHE:CD2	1:B:86:LEU:HD13	2.47	0.50
1:B:125:LEU:O	1:B:133:GLY:HA3	2.12	0.49
1:A:93:ILE:HD13	1:A:171:LEU:HD22	1.95	0.48
1:A:125:LEU:O	1:A:133:GLY:HA3	2.14	0.48
1:B:129:GLU:OE1	1:B:184:LYS:NZ	2.46	0.48
1:A:104:ARG:HD2	1:A:131:ASP:O	2.17	0.45
1:B:178:GLN:CG	1:B:178:GLN:O	2.64	0.44
1:A:174:ALA:HA	1:A:176:TYR:CE2	2.54	0.43
1:A:229[A]:ARG:HB2	1:A:233[A]:SER:OG	2.19	0.43
1:B:107:PHE:N	1:B:108:PRO:HD3	2.36	0.41
1:B:223:ASN:OD1	1:B:238:ARG:NH1	2.54	0.40

There are no symmetry-related clashes.

## 5.3 Torsion angles

### 5.3.1 Protein backbone

In the following table, the Percentiles column shows the percent Ramachandran outliers of the chain as a percentile score with respect to all X-ray entries followed by that with respect to entries of similar resolution.

The Analysed column shows the number of residues for which the backbone conformation was analysed, and the total number of residues.

Mol	Chain	Analysed	Favoured	Allowed	Outliers	Percentiles	
1	A	247/267 (92%)	242 (98%)	5 (2%)	0	100	100
1	B	249/267 (93%)	241 (97%)	8 (3%)	0	100	100
All	All	496/534 (93%)	483 (97%)	13 (3%)	0	100	100

There are no Ramachandran outliers to report.

### 5.3.2 Protein sidechains

In the following table, the Percentiles column shows the percent sidechain outliers of the chain as a percentile score with respect to all X-ray entries followed by that with respect to entries of similar resolution.

The Analysed column shows the number of residues for which the sidechain conformation was analysed, and the total number of residues.

Mol	Chain	Analysed	Rotameric	Outliers	Percentiles	
1	A	224/240 (93%)	219 (98%)	5 (2%)	55	49
1	B	228/240 (95%)	222 (97%)	6 (3%)	49	42
All	All	452/480 (94%)	441 (98%)	11 (2%)	55	45

All (11) residues with a non-rotameric sidechain are listed below:

Mol	Chain	Res	Type
1	A	42	LYS
1	A	57	VAL
1	A	68	GLU
1	A	139	LYS
1	A	177	GLN
1	B	20	LEU
1	B	29	GLN
1	B	86	LEU

*Continued on next page...*

*Continued from previous page...*

Mol	Chain	Res	Type
1	B	145[A]	GLU
1	B	145[B]	GLU
1	B	184	LYS

Some sidechains can be flipped to improve hydrogen bonding and reduce clashes. All (7) such sidechains are listed below:

Mol	Chain	Res	Type
1	A	88	ASN
1	A	94	ASN
1	A	138	GLN
1	A	177	GLN
1	B	29	GLN
1	B	94	ASN
1	B	138	GLN

### 5.3.3 RNA [i](#)

There are no RNA molecules in this entry.

## 5.4 Non-standard residues in protein, DNA, RNA chains [i](#)

There are no non-standard protein/DNA/RNA residues in this entry.

## 5.5 Carbohydrates [i](#)

There are no carbohydrates in this entry.

## 5.6 Ligand geometry [i](#)

Of 8 ligands modelled in this entry, 1 is monoatomic - leaving 7 for Mogul analysis.

In the following table, the Counts columns list the number of bonds (or angles) for which Mogul statistics could be retrieved, the number of bonds (or angles) that are observed in the model and the number of bonds (or angles) that are defined in the Chemical Component Dictionary. The Link column lists molecule types, if any, to which the group is linked. The Z score for a bond length (or angle) is the number of standard deviations the observed value is removed from the expected value. A bond length (or angle) with  $|Z| > 2$  is considered an outlier worth inspection. RMSZ is the root-mean-square of all Z scores of the bond lengths (or angles).

Mol	Type	Chain	Res	Link	Bond lengths			Bond angles		
					Counts	RMSZ	# Z  > 2	Counts	RMSZ	# Z  > 2
2	0FX	A	301	-	29,37,37	1.07	2 (6%)	41,57,57	1.48	7 (17%)
3	FOL	A	302	-	25,25,34	3.29	4 (16%)	31,35,47	4.82	13 (41%)
4	EDO	A	303	-	3,3,3	0.34	0	2,2,2	0.07	0
5	PO4	A	304	-	4,4,4	0.90	0	6,6,6	0.46	0
2	0FX	B	301	-	29,37,37	1.28	1 (3%)	41,57,57	1.91	7 (17%)
3	FOL	B	302	-	25,25,34	2.95	4 (16%)	31,35,47	4.72	13 (41%)
4	EDO	B	303	-	3,3,3	0.20	0	2,2,2	0.39	0

In the following table, the Chirals column lists the number of chiral outliers, the number of chiral centers analysed, the number of these observed in the model and the number defined in the Chemical Component Dictionary. Similar counts are reported in the Torsion and Rings columns. '-' means no outliers of that kind were identified.

Mol	Type	Chain	Res	Link	Chirals	Torsions	Rings
2	0FX	A	301	-	-	2/17/53/53	0/3/3/3
3	FOL	A	302	-	-	0/9/9/22	0/3/3/3
4	EDO	A	303	-	-	0/1/1/1	-
2	0FX	B	301	-	-	4/17/53/53	0/3/3/3
3	FOL	B	302	-	-	1/9/9/22	0/3/3/3
4	EDO	B	303	-	-	0/1/1/1	-

All (11) bond length outliers are listed below:

Mol	Chain	Res	Type	Atoms	Z	Observed(Å)	Ideal(Å)
3	A	302	FOL	C7-N8	10.23	1.48	1.31
3	B	302	FOL	C7-C6	8.53	1.54	1.39
3	A	302	FOL	C6-N5	8.51	1.48	1.32
3	A	302	FOL	C7-C6	8.38	1.54	1.39
3	B	302	FOL	C6-N5	7.85	1.47	1.32
3	B	302	FOL	C7-N8	7.48	1.44	1.31
2	B	301	0FX	O41-C41	4.95	1.37	1.24
3	B	302	FOL	C9-C6	3.41	1.57	1.51
2	A	301	0FX	O41-C41	3.19	1.32	1.24
3	A	302	FOL	C9-C6	2.38	1.55	1.51
2	A	301	0FX	C21-N31	-2.29	1.33	1.38

All (40) bond angle outliers are listed below:

Mol	Chain	Res	Type	Atoms	Z	Observed(°)	Ideal(°)
3	A	302	FOL	C7-C6-N5	-21.24	106.98	120.85
3	B	302	FOL	C7-C6-N5	-20.61	107.39	120.85

*Continued on next page...*

*Continued from previous page...*

Mol	Chain	Res	Type	Atoms	Z	Observed(°)	Ideal(°)
3	A	302	FOL	C6-C7-N8	-11.87	111.50	123.13
3	B	302	FOL	C6-C7-N8	-10.04	113.30	123.13
2	B	301	0FX	P-OPP-P2	-6.08	113.24	132.57
3	B	302	FOL	C11-C-N	5.33	123.81	117.75
2	B	301	0FX	C41-N31-C21	5.21	119.54	115.14
2	A	301	0FX	C41-N31-C21	4.93	119.30	115.14
2	B	301	0FX	OPP-P2-O1G	4.90	112.36	102.48
3	B	302	FOL	N1-C2-N3	-4.51	121.15	127.25
3	A	302	FOL	N1-C2-N3	-4.44	121.24	127.25
3	B	302	FOL	C2-N1-C8A	4.28	120.25	115.36
3	A	302	FOL	C2-N1-C8A	4.01	119.94	115.36
3	B	302	FOL	C6-N5-C4A	4.00	123.23	118.44
3	B	302	FOL	C4-C4A-N5	3.93	122.92	118.59
3	A	302	FOL	C4-N3-C2	3.70	121.33	116.06
3	B	302	FOL	C8A-C4A-N5	-3.63	118.70	122.59
3	A	302	FOL	C4A-C4-N3	-3.38	118.77	123.47
3	A	302	FOL	N8-C8A-N1	3.38	119.83	115.83
2	A	301	0FX	C2-C1-N11	-3.23	106.81	114.27
3	A	302	FOL	C6-N5-C4A	3.06	122.11	118.44
3	B	302	FOL	O-C-C11	-2.90	116.10	119.62
3	B	302	FOL	C4A-C4-N3	-2.82	119.55	123.47
3	B	302	FOL	C4-N3-C2	2.80	120.05	116.06
2	B	301	0FX	C51-C61-N11	-2.75	119.18	122.15
3	A	302	FOL	C9-C6-N5	-2.65	111.91	116.67
2	A	301	0FX	O3G-C3G-C4G	2.53	114.75	110.22
2	A	301	0FX	O5G-C1G-C2G	-2.36	105.32	110.35
2	B	301	0FX	O5G-C5G-C6G	2.31	111.55	106.73
2	A	301	0FX	C51-C61-N11	-2.27	119.69	122.15
3	A	302	FOL	C11-C-N	2.26	120.32	117.75
3	B	302	FOL	C4-C4A-C8A	-2.24	118.30	119.95
2	A	301	0FX	O4-C1-N11	2.23	111.53	107.78
3	A	302	FOL	C12-C13-C14	2.22	122.90	120.30
3	A	302	FOL	C8A-C4A-N5	-2.13	120.31	122.59
2	B	301	0FX	O5-P-O2P	-2.12	100.77	109.07
2	B	301	0FX	C3G-C4G-C5G	2.11	115.07	110.67
3	A	302	FOL	C4-C4A-N5	2.10	120.91	118.59
2	A	301	0FX	O1G-C1G-C2G	2.08	112.19	108.38
3	B	302	FOL	C9-C6-N5	-2.07	112.94	116.67

There are no chirality outliers.

All (7) torsion outliers are listed below:

Mol	Chain	Res	Type	Atoms
2	B	301	0FX	P-OPP-P2-O1G
2	B	301	0FX	C5-O5-P-OPP
2	B	301	0FX	C5-O5-P-O2P
2	A	301	0FX	C1G-O1G-P2-OPP
3	B	302	FOL	C6-C9-N10-C14
2	B	301	0FX	C1G-O1G-P2-OPP
2	A	301	0FX	P2-OPP-P-O1P

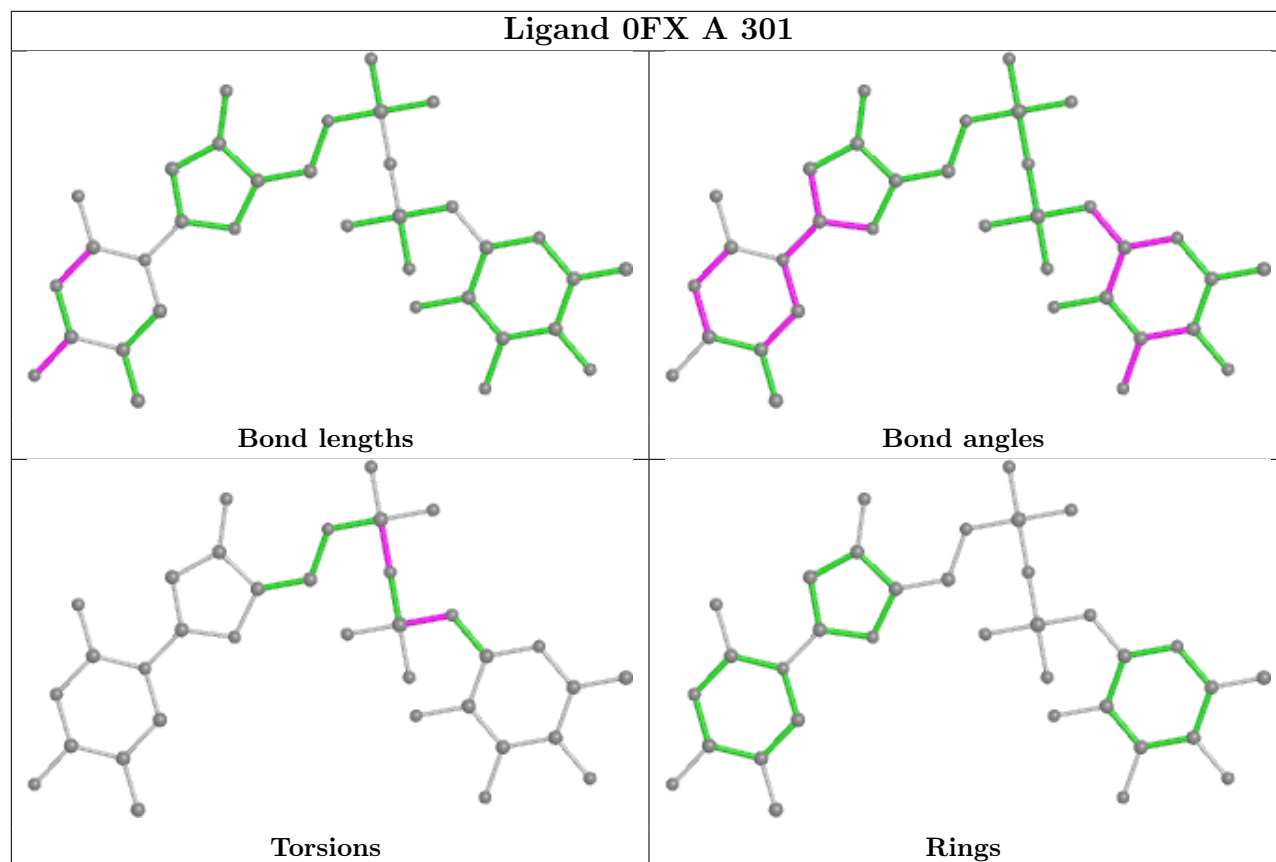
There are no ring outliers.

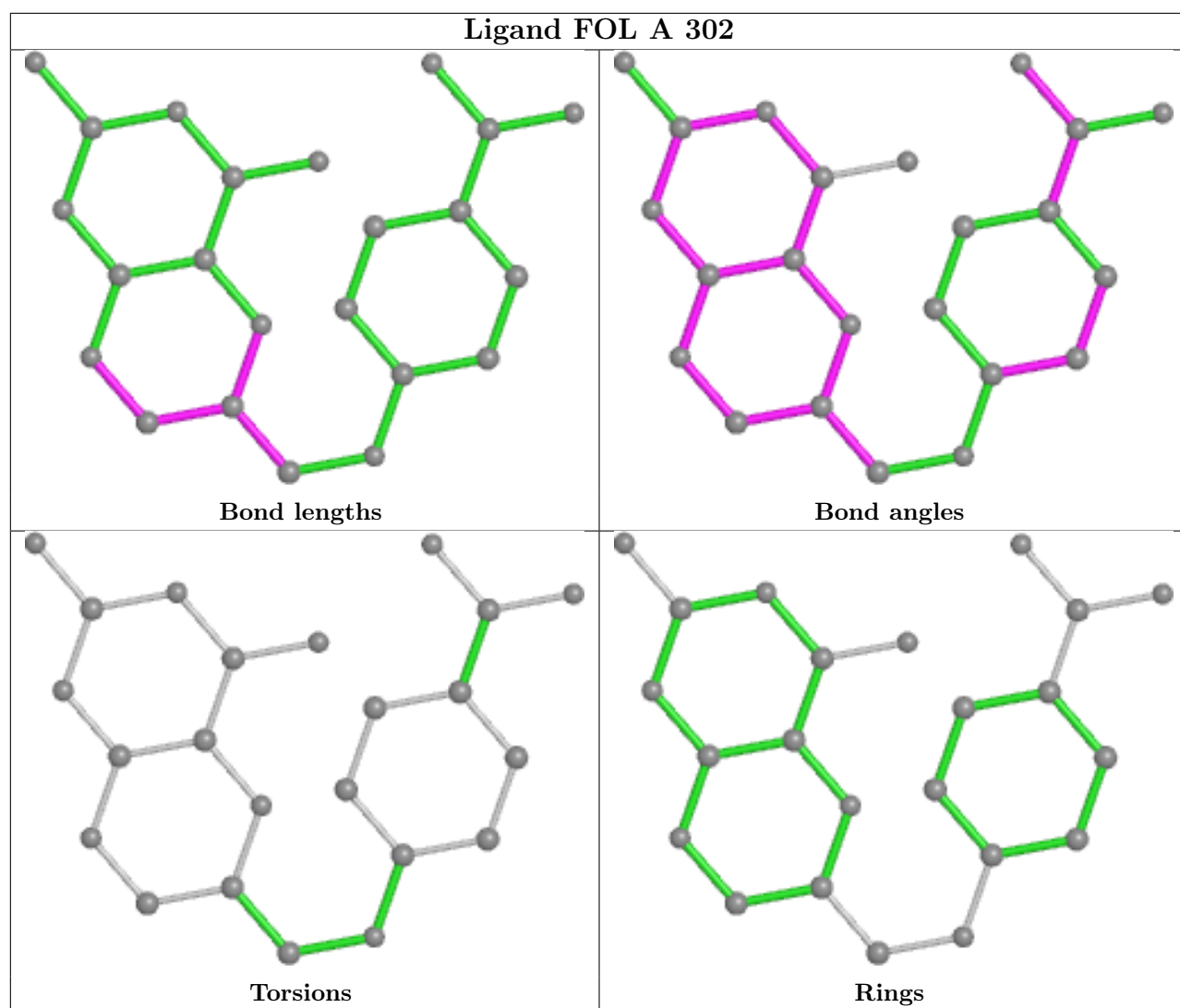
2 monomers are involved in 2 short contacts:

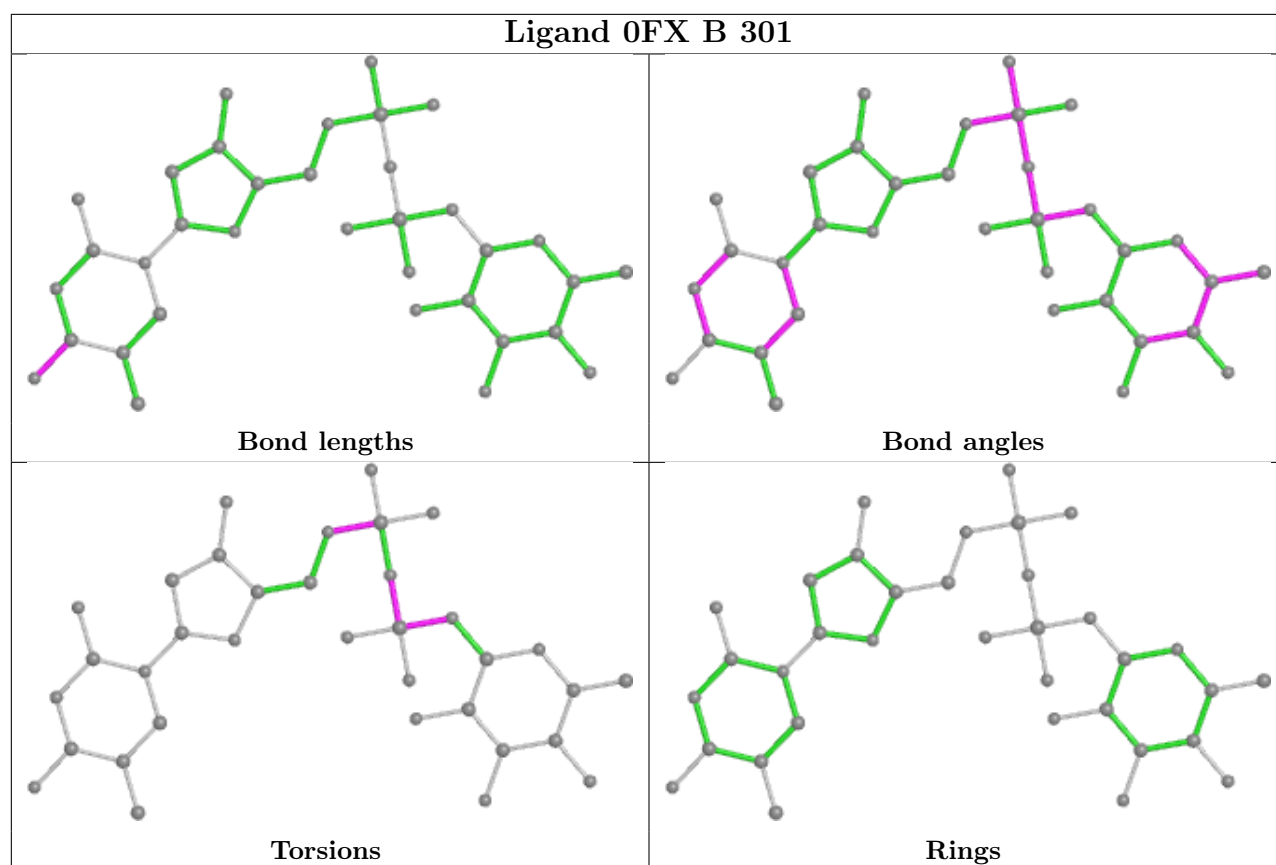
Mol	Chain	Res	Type	Clashes	Symm-Clashes
3	A	302	FOL	1	0
3	B	302	FOL	1	0

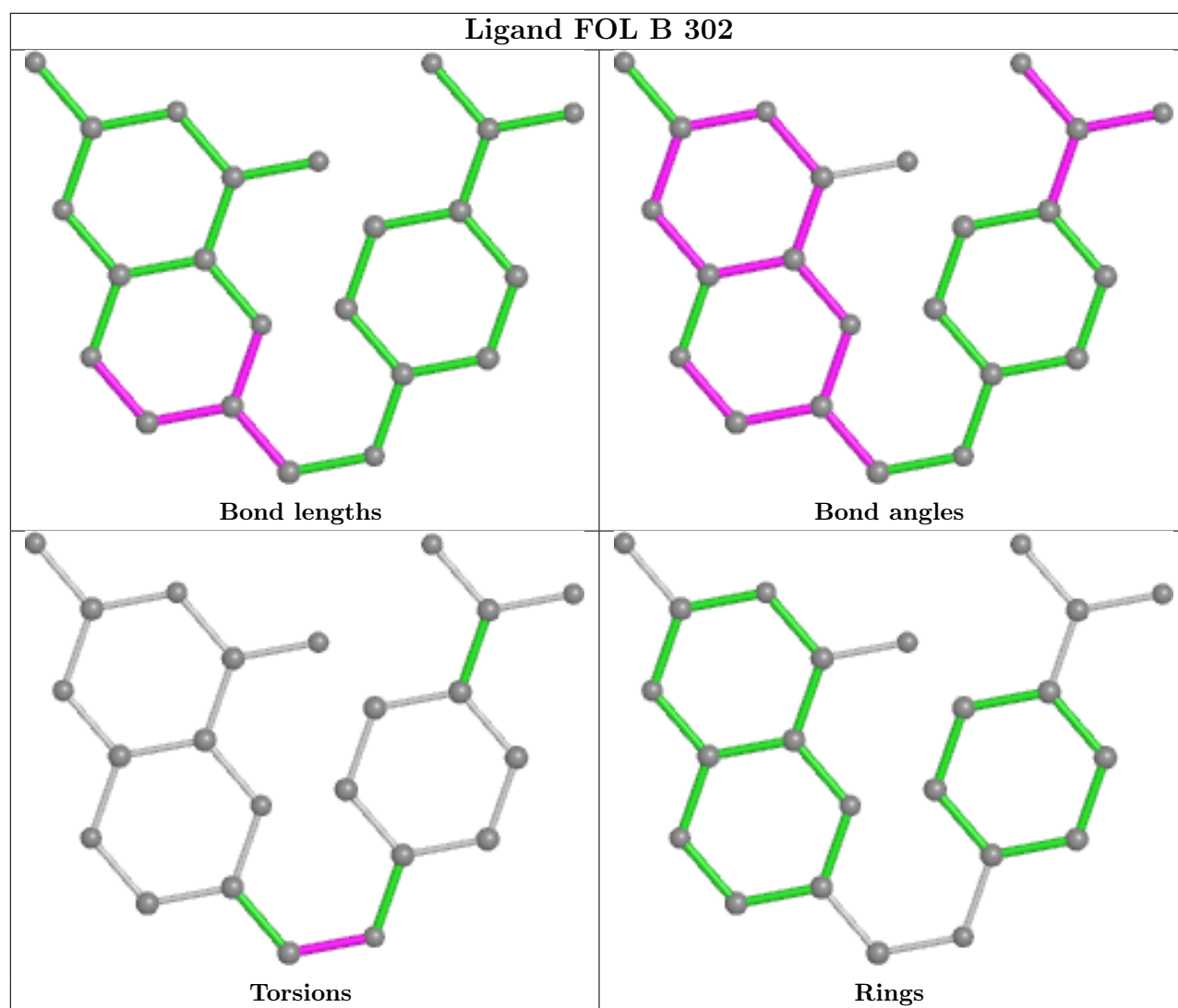
The following is a two-dimensional graphical depiction of Mogul quality analysis of bond lengths, bond angles, torsion angles, and ring geometry for all instances of the Ligand of Interest. In addition, ligands with molecular weight > 250 and outliers as shown on the validation Tables will also be included. For torsion angles, if less than 5% of the Mogul distribution of torsion angles is within 10 degrees of the torsion angle in question, then that torsion angle is considered an outlier. Any bond that is central to one or more torsion angles identified as an outlier by Mogul will be highlighted in the graph. For rings, the root-mean-square deviation (RMSD) between the ring in question and similar rings identified by Mogul is calculated over all ring torsion angles. If the average RMSD is greater than 60 degrees and the minimal RMSD between the ring in question and any Mogul-identified rings is also greater than 60 degrees, then that ring is considered an outlier. The outliers are highlighted in purple. The color gray indicates Mogul did not find sufficient equivalents in the CSD to analyse the geometry.











## 5.7 Other polymers [i](#)

There are no such residues in this entry.

## 5.8 Polymer linkage issues [i](#)

There are no chain breaks in this entry.

## 6 Fit of model and data

### 6.1 Protein, DNA and RNA chains

In the following table, the column labelled ‘#RSRZ > 2’ contains the number (and percentage) of RSRZ outliers, followed by percent RSRZ outliers for the chain as percentile scores relative to all X-ray entries and entries of similar resolution. The OWAB column contains the minimum, median, 95<sup>th</sup> percentile and maximum values of the occupancy-weighted average B-factor per residue. The column labelled ‘Q < 0.9’ lists the number of (and percentage) of residues with an average occupancy less than 0.9.

Mol	Chain	Analysed	<RSRZ>	#RSRZ>2	OWAB(Å <sup>2</sup> )	Q<0.9
1	A	246/267 (92%)	0.26	18 (7%) 15 17	26, 37, 59, 81	0
1	B	251/267 (94%)	0.43	24 (9%) 8 9	25, 37, 67, 92	0
All	All	497/534 (93%)	0.35	42 (8%) 11 12	25, 37, 64, 92	0

All (42) RSRZ outliers are listed below:

Mol	Chain	Res	Type	RSRZ
1	B	182	TYR	9.2
1	A	95	ILE	4.3
1	B	-5	PHE	4.2
1	A	1	MET	4.0
1	B	245	LYS	3.6
1	A	74	VAL	3.4
1	B	-4	GLN	3.3
1	B	42	LYS	3.3
1	A	123	ILE	3.1
1	B	95	ILE	3.0
1	B	93	ILE	2.9
1	B	214	LEU	2.9
1	B	26	ASP	2.9
1	B	-6	TYR	2.9
1	B	49	SER	2.7
1	B	211	ILE	2.6
1	A	93	ILE	2.6
1	A	184	LYS	2.5
1	B	74	VAL	2.5
1	A	106	TRP	2.5
1	B	61	LYS	2.5
1	A	0	HIS	2.5
1	A	94	ASN	2.5
1	B	23	VAL	2.4

*Continued on next page...*

*Continued from previous page...*

Mol	Chain	Res	Type	RSRZ
1	A	68	GLU	2.4
1	A	60	GLU	2.3
1	B	213	LEU	2.3
1	A	40	ILE	2.3
1	B	45	ALA	2.3
1	B	43	ASN	2.3
1	B	40	ILE	2.2
1	A	39	ALA	2.2
1	B	50	LEU	2.2
1	A	75	SER	2.2
1	B	181	SER	2.2
1	A	6	ILE	2.2
1	A	211	ILE	2.2
1	B	239	LEU	2.2
1	A	26	ASP	2.1
1	B	46	SER	2.1
1	B	232	GLY	2.0
1	A	190	ILE	2.0

## 6.2 Non-standard residues in protein, DNA, RNA chains [i](#)

There are no non-standard protein/DNA/RNA residues in this entry.

## 6.3 Carbohydrates [i](#)

There are no carbohydrates in this entry.

## 6.4 Ligands [i](#)

In the following table, the Atoms column lists the number of modelled atoms in the group and the number defined in the chemical component dictionary. The B-factors column lists the minimum, median, 95<sup>th</sup> percentile and maximum values of B factors of atoms in the group. The column labelled 'Q< 0.9' lists the number of atoms with occupancy less than 0.9.

Mol	Type	Chain	Res	Atoms	RSCC	RSR	B-factors(Å <sup>2</sup> )	Q<0.9
3	FOL	A	302	23/32	0.84	0.15	34,38,51,56	0
4	EDO	A	303	4/4	0.91	0.13	33,38,41,45	0
3	FOL	B	302	23/32	0.94	0.12	25,31,51,52	0
6	NA	B	304	1/1	0.95	0.11	36,36,36,36	0
2	0FX	B	301	35/35	0.95	0.10	28,36,61,62	0

*Continued on next page...*

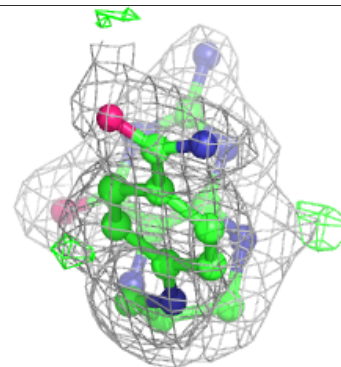
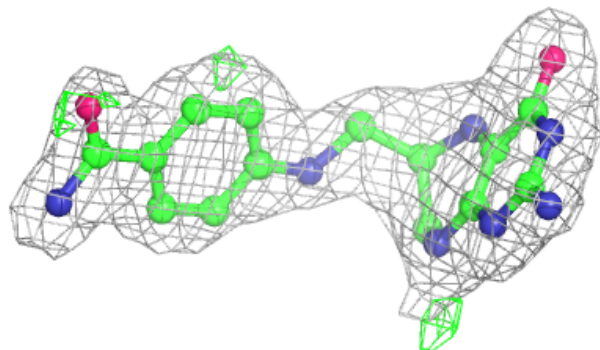
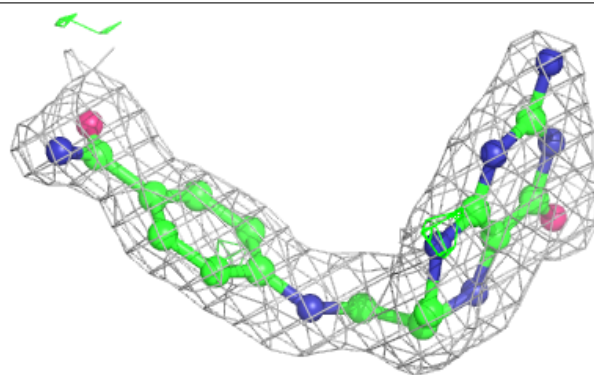
*Continued from previous page...*

Mol	Type	Chain	Res	Atoms	RSCC	RSR	B-factors( $\text{\AA}^2$ )	Q<0.9
5	PO4	A	304	5/5	0.95	0.27	63,64,71,75	0
2	0FX	A	301	35/35	0.96	0.09	29,38,52,54	0
4	EDO	B	303	4/4	0.97	0.06	32,39,39,39	0

The following is a graphical depiction of the model fit to experimental electron density of all instances of the Ligand of Interest. In addition, ligands with molecular weight > 250 and outliers as shown on the geometry validation Tables will also be included. Each fit is shown from different orientation to approximate a three-dimensional view.

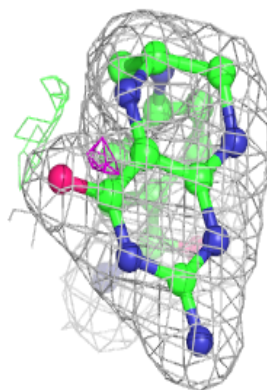
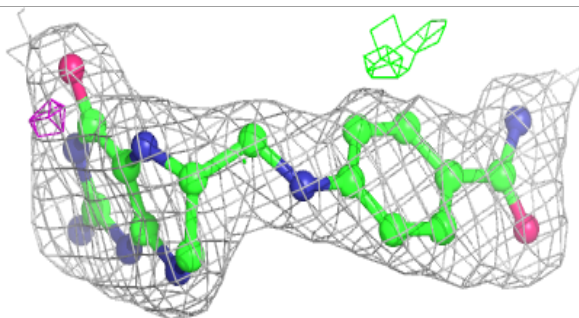
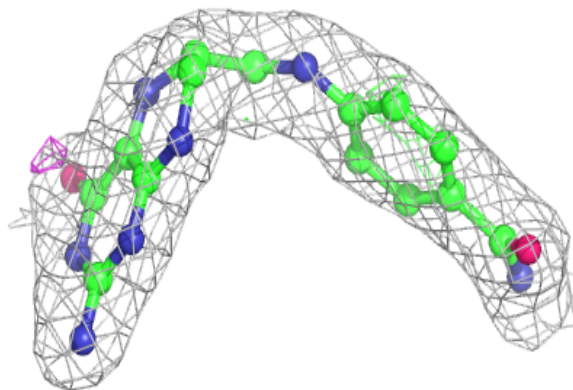
**Electron density around FOL A 302:**

2mF<sub>o</sub>-DF<sub>c</sub> (at 0.7 rmsd) in gray  
mF<sub>o</sub>-DF<sub>c</sub> (at 3 rmsd) in purple (negative)  
and green (positive)

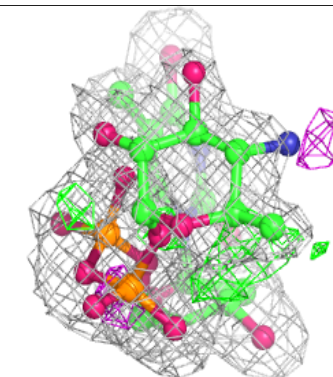
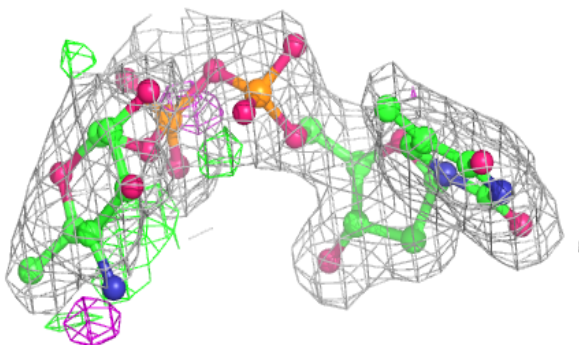
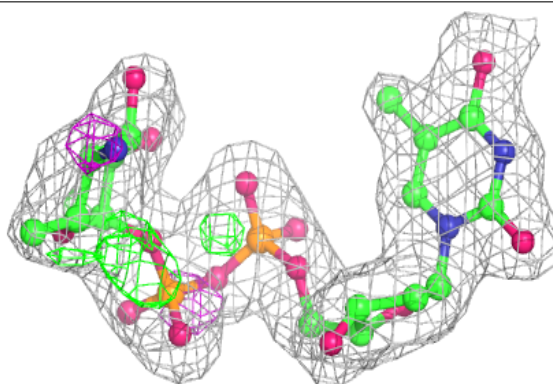


**Electron density around FOL B 302:**

$2mF_o-DF_c$  (at 0.7 rmsd) in gray  
 $mF_o-DF_c$  (at 3 rmsd) in purple (negative)  
and green (positive)

**Electron density around OFX B 301:**

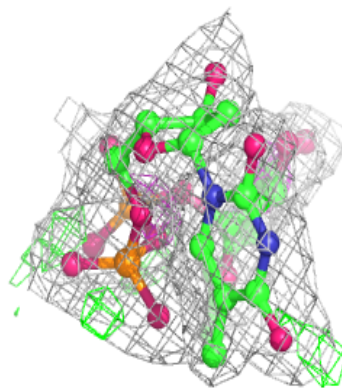
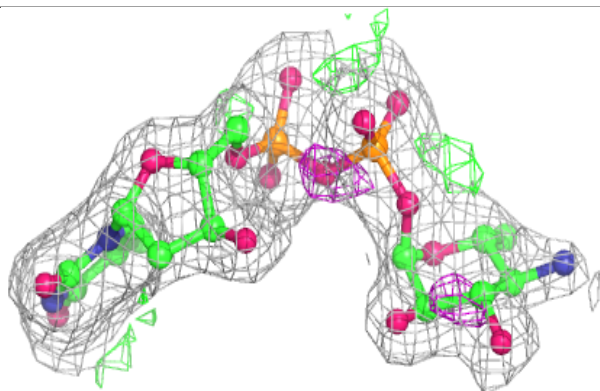
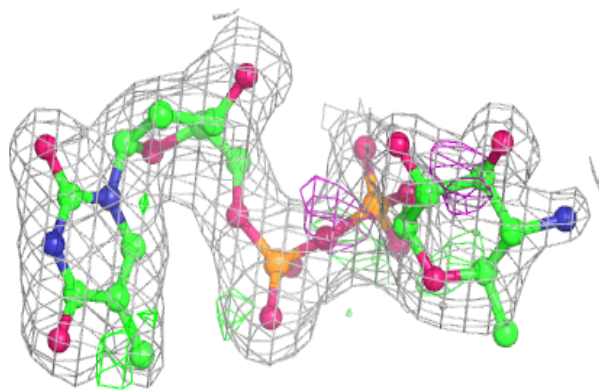
$2mF_o-DF_c$  (at 0.7 rmsd) in gray  
 $mF_o-DF_c$  (at 3 rmsd) in purple (negative)  
and green (positive)





**Electron density around 0FX A 301:**

$2mF_o - DF_c$  (at 0.7 rmsd) in gray  
 $mF_o - DF_c$  (at 3 rmsd) in purple (negative)  
and green (positive)



## 6.5 Other polymers [i](#)

There are no such residues in this entry.