



Full wwPDB X-ray Structure Validation Report ⓘ

Mar 13, 2018 – 12:11 pm GMT

PDB ID : 2V3D
Title : acid-beta-glucosidase with N-butyl-deoxynojirimycin
Authors : Brumshtein, B.; Greenblatt, H.M.; Butters, T.D.; Shaaltiel, Y.; Aviezer, D.;
Silman, I.; Futerman, A.H.; Sussman, J.L.
Deposited on : 2007-06-17
Resolution : 1.96 Å(reported)

This is a Full wwPDB X-ray Structure Validation Report for a publicly released PDB entry.

We welcome your comments at validation@mail.wwpdb.org

A user guide is available at

<https://www.wwpdb.org/validation/2017/XrayValidationReportHelp>

with specific help available everywhere you see the ⓘ symbol.

The following versions of software and data (see [references ⓘ](#)) were used in the production of this report:

MolProbity : 4.02b-467
Mogul : 1.7.3 (157068), CSD as539be (2018)
Xtriage (Phenix) : 1.13
EDS : trunk31020
Percentile statistics : 20171227.v01 (using entries in the PDB archive December 27th 2017)
Refmac : 5.8.0158
CCP4 : 7.0 (Gargrove)
Ideal geometry (proteins) : Engh & Huber (2001)
Ideal geometry (DNA, RNA) : Parkinson et al. (1996)
Validation Pipeline (wwPDB-VP) : trunk31020

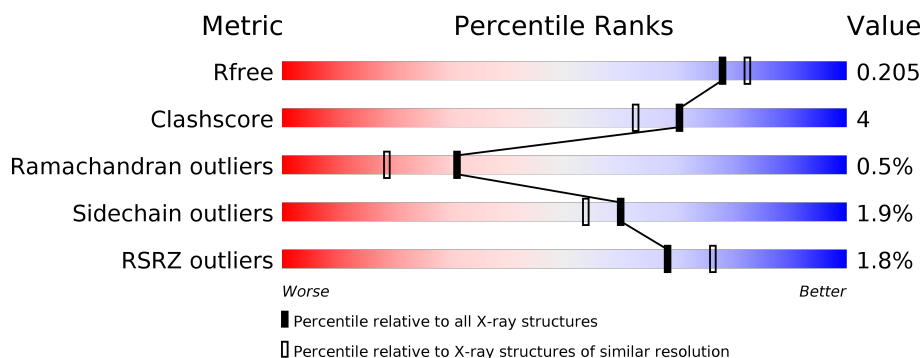
1 Overall quality at a glance

The following experimental techniques were used to determine the structure:

X-RAY DIFFRACTION

The reported resolution of this entry is 1.96 Å.

Percentile scores (ranging between 0-100) for global validation metrics of the entry are shown in the following graphic. The table shows the number of entries on which the scores are based.



Metric	Whole archive (#Entries)	Similar resolution (#Entries, resolution range(Å))
R_{free}	111664	2220 (1.96-1.96)
Clashscore	122126	2333 (1.96-1.96)
Ramachandran outliers	120053	2314 (1.96-1.96)
Sidechain outliers	120020	2314 (1.96-1.96)
RSRZ outliers	108989	2174 (1.96-1.96)

The table below summarises the geometric issues observed across the polymeric chains and their fit to the electron density. The red, orange, yellow and green segments on the lower bar indicate the fraction of residues that contain outliers for ≥ 3 , 2, 1 and 0 types of geometric quality criteria. A grey segment represents the fraction of residues that are not modelled. The numeric value for each fraction is indicated below the corresponding segment, with a dot representing fractions $\leq 5\%$. The upper red bar (where present) indicates the fraction of residues that have poor fit to the electron density. The numeric value is given above the bar.

Mol	Chain	Length	Quality of chain
1	A	505	<div> <div>2%</div> <div> <div></div> <div>88%</div> <div>10%</div> <div></div> </div> <div></div> </div>
1	B	505	<div> <div>2%</div> <div> <div></div> <div>92%</div> <div>6%</div> <div></div> </div> <div></div> </div>

The following table lists non-polymeric compounds, carbohydrate monomers and non-standard residues in protein, DNA, RNA chains that are outliers for geometric or electron-density-fit criteria:

Mol	Type	Chain	Res	Chirality	Geometry	Clashes	Electron density
3	BMA	B	1500	X	-	-	-

2 Entry composition [i](#)

There are 7 unique types of molecules in this entry. The entry contains 9008 atoms, of which 0 are hydrogens and 0 are deuteriums.

In the tables below, the ZeroOcc column contains the number of atoms modelled with zero occupancy, the AltConf column contains the number of residues with at least one atom in alternate conformation and the Trace column contains the number of residues modelled with at most 2 atoms.

- Molecule 1 is a protein called GLUCOSYLCERAMIDASE.

Mol	Chain	Residues	Atoms					ZeroOcc	AltConf	Trace
1	A	496	Total	C	N	O	S	0	7	1
			3936	2539	670	710	17			
1	B	497	Total	C	N	O	S	0	4	0
			3928	2535	663	712	18			

There are 2 discrepancies between the modelled and reference sequences:

Chain	Residue	Modelled	Actual	Comment	Reference
A	495	HIS	ARG	conflict	UNP P04062
B	495	HIS	ARG	conflict	UNP P04062

- Molecule 2 is N-ACETYL-D-GLUCOSAMINE (three-letter code: NAG) (formula: C₈H₁₅NO₆).



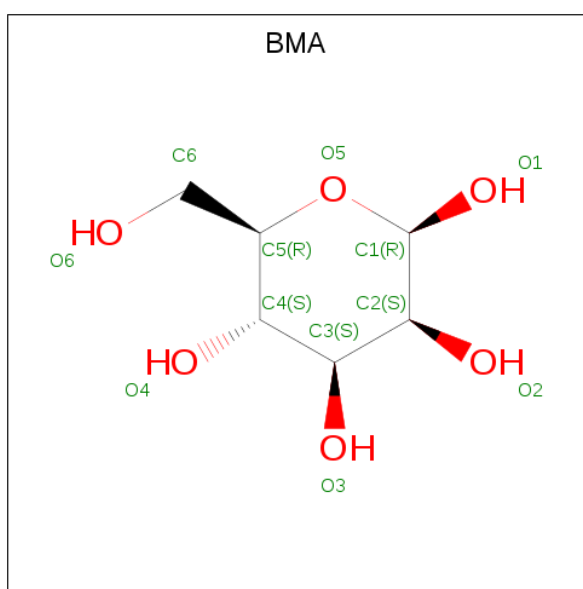
Mol	Chain	Residues	Atoms				ZeroOcc	AltConf
2	A	1	Total	C	N	O	0	0
			14	8	1	5		

Continued on next page...

Continued from previous page...

Mol	Chain	Residues	Atoms				ZeroOcc	AltConf
2	A	1	Total	C	N	O	0	0
			14	8	1	5		
2	B	1	Total	C	N	O	0	0
			14	8	1	5		
2	B	1	Total	C	N	O	0	0
			14	8	1	5		
2	B	1	Total	C	N	O	0	0
			14	8	1	5		

- Molecule 3 is BETA-D-MANNOSE (three-letter code: BMA) (formula: $C_6H_{12}O_6$).



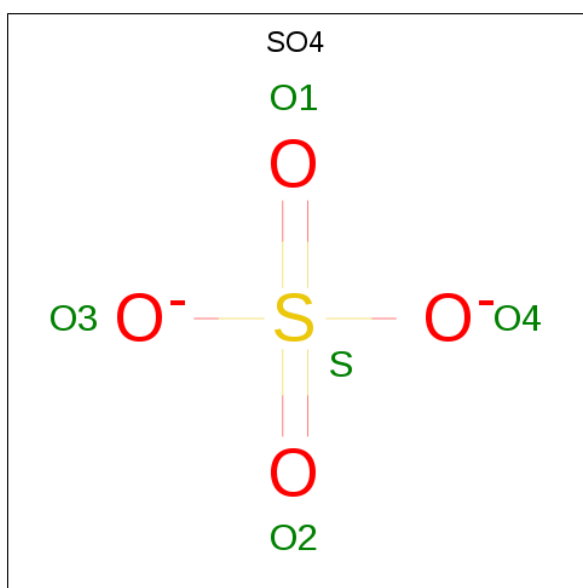
Mol	Chain	Residues	Atoms			ZeroOcc	AltConf
3	A	1	Total	C	O	0	0
			11	6	5		
3	B	1	Total	C	O	0	0
			11	6	5		

- Molecule 4 is ALPHA-L-FUCOSE (three-letter code: FUC) (formula: $C_6H_{12}O_5$).



Mol	Chain	Residues	Atoms			ZeroOcc	AltConf
4	A	1	Total	C	O	0	0
			10	6	4		
4	B	1	Total	C	O	0	0
			10	6	4		

- Molecule 5 is SULFATE ION (three-letter code: SO4) (formula: O₄S).



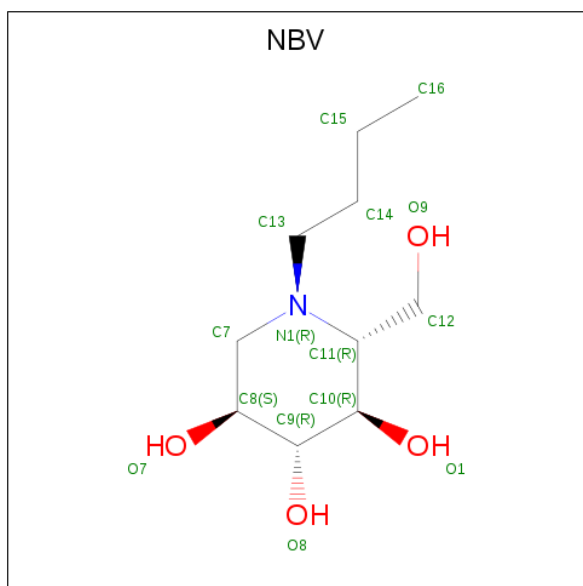
Mol	Chain	Residues	Atoms			ZeroOcc	AltConf
5	A	1	Total	O	S	0	0
			5	4	1		
5	A	1	Total	O	S	0	0
			5	4	1		

Continued on next page...

Continued from previous page...

Mol	Chain	Residues	Atoms			ZeroOcc	AltConf
5	A	1	Total	O	S	0	0
			5	4	1		
5	A	1	Total	O	S	0	0
			5	4	1		
5	B	1	Total	O	S	0	0
			5	4	1		
5	B	1	Total	O	S	0	0
			5	4	1		
5	B	1	Total	O	S	0	0
			5	4	1		

- Molecule 6 is (2R,3R,4R,5S)-1-BUTYL-2-(HYDROXYMETHYL)PIPERIDINE-3,4,5-TRIOL (three-letter code: NBV) (formula: C₁₀H₂₁NO₄).



Mol	Chain	Residues	Atoms				ZeroOcc	AltConf
6	A	1	Total	C	N	O	0	0
			15	10	1	4		
6	B	1	Total	C	N	O	0	0
			15	10	1	4		

- Molecule 7 is water.

Mol	Chain	Residues	Atoms		ZeroOcc	AltConf
7	A	505	Total	O	0	0
			505	505		

Continued on next page...

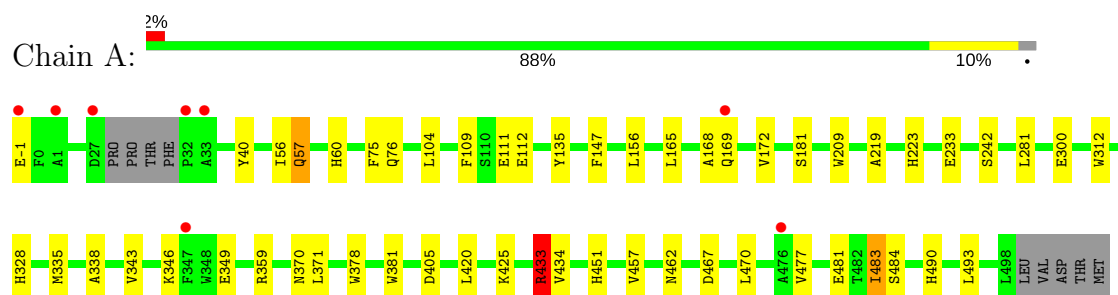
Continued from previous page...

Mol	Chain	Residues	Atoms		ZeroOcc	AltConf
7	B	457	Total 457	O 457	0	0

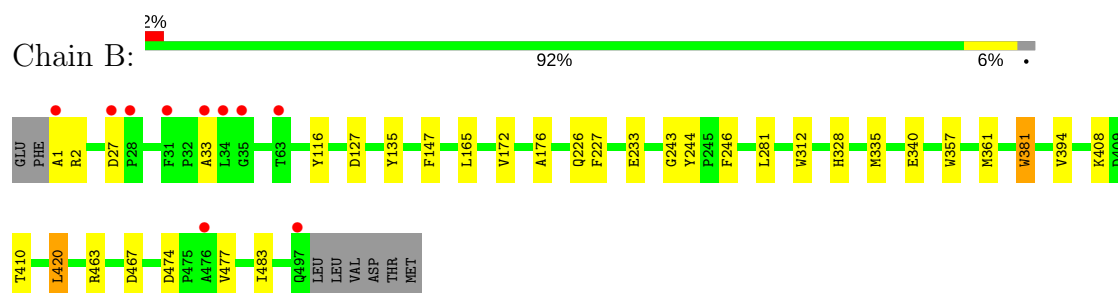
3 Residue-property plots [i](#)

These plots are drawn for all protein, RNA and DNA chains in the entry. The first graphic for a chain summarises the proportions of the various outlier classes displayed in the second graphic. The second graphic shows the sequence view annotated by issues in geometry and electron density. Residues are color-coded according to the number of geometric quality criteria for which they contain at least one outlier: green = 0, yellow = 1, orange = 2 and red = 3 or more. A red dot above a residue indicates a poor fit to the electron density ($RSRZ > 2$). Stretches of 2 or more consecutive residues without any outlier are shown as a green connector. Residues present in the sample, but not in the model, are shown in grey.

• Molecule 1: GLUCOSYLCERAMIDASE



• Molecule 1: GLUCOSYLCERAMIDASE



4 Data and refinement statistics

Property	Value	Source
Space group	P 1 21 1	Depositor
Cell constants a, b, c, α , β , γ	67.99Å 97.21Å 82.41Å 90.00° 102.91° 90.00°	Depositor
Resolution (Å)	25.22 – 1.96 25.22 – 1.96	Depositor EDS
% Data completeness (in resolution range)	100.0 (25.22-1.96) 96.6 (25.22-1.96)	Depositor EDS
R_{merge}	0.07	Depositor
R_{sym}	(Not available)	Depositor
$\langle I/\sigma(I) \rangle$ ¹	2.47 (at 1.96Å)	Xtriage
Refinement program	REFMAC 5.2.0019	Depositor
R, R_{free}	0.154 , 0.208 0.154 , 0.205	Depositor DCC
R_{free} test set	3608 reflections (5.02%)	wwPDB-VP
Wilson B-factor (Å ²)	20.2	Xtriage
Anisotropy	0.035	Xtriage
Bulk solvent k_{sol} (e/Å ³), B_{sol} (Å ²)	0.33 , 47.5	EDS
L-test for twinning ²	$\langle L \rangle = 0.49$, $\langle L^2 \rangle = 0.33$	Xtriage
Estimated twinning fraction	No twinning to report.	Xtriage
F_o, F_c correlation	0.96	EDS
Total number of atoms	9008	wwPDB-VP
Average B, all atoms (Å ²)	20.0	wwPDB-VP

Xtriage's analysis on translational NCS is as follows: *The largest off-origin peak in the Patterson function is 4.81% of the height of the origin peak. No significant pseudotranslation is detected.*

¹Intensities estimated from amplitudes.

²Theoretical values of $\langle |L| \rangle$, $\langle L^2 \rangle$ for acentric reflections are 0.5, 0.333 respectively for untwinned datasets, and 0.375, 0.2 for perfectly twinned datasets.

5 Model quality [i](#)

5.1 Standard geometry [i](#)

Bond lengths and bond angles in the following residue types are not validated in this section: FUC, SO4, BMA, NAG, NBV

The Z score for a bond length (or angle) is the number of standard deviations the observed value is removed from the expected value. A bond length (or angle) with $|Z| > 5$ is considered an outlier worth inspection. RMSZ is the root-mean-square of all Z scores of the bond lengths (or angles).

Mol	Chain	Bond lengths		Bond angles	
		RMSZ	$\# Z > 5$	RMSZ	$\# Z > 5$
1	A	0.77	0/4075	0.72	2/5555 (0.0%)
1	B	0.73	0/4058	0.70	0/5537
All	All	0.75	0/8133	0.71	2/11092 (0.0%)

Chiral center outliers are detected by calculating the chiral volume of a chiral center and verifying if the center is modelled as a planar moiety or with the opposite hand. A planarity outlier is detected by checking planarity of atoms in a peptide group, atoms in a mainchain group or atoms of a sidechain that are expected to be planar.

Mol	Chain	#Chirality outliers	#Planarity outliers
1	B	0	1

There are no bond length outliers.

All (2) bond angle outliers are listed below:

Mol	Chain	Res	Type	Atoms	Z	Observed($^{\circ}$)	Ideal($^{\circ}$)
1	A	433[A]	ARG	NE-CZ-NH1	5.63	123.11	120.30
1	A	433[B]	ARG	NE-CZ-NH1	5.63	123.11	120.30

There are no chirality outliers.

All (1) planarity outliers are listed below:

Mol	Chain	Res	Type	Group
1	B	33	ALA	Peptide

5.2 Too-close contacts [i](#)

In the following table, the Non-H and H(model) columns list the number of non-hydrogen atoms and hydrogen atoms in the chain respectively. The H(added) column lists the number of hydrogen

atoms added and optimized by MolProbity. The Clashes column lists the number of clashes within the asymmetric unit, whereas Symm-Clashes lists symmetry related clashes.

Mol	Chain	Non-H	H(model)	H(added)	Clashes	Symm-Clashes
1	A	3936	0	3840	35	0
1	B	3928	0	3815	25	0
2	A	28	0	23	0	0
2	B	42	0	36	0	0
3	A	11	0	10	0	0
3	B	11	0	10	0	0
4	A	10	0	10	0	0
4	B	10	0	10	0	0
5	A	20	0	0	1	0
5	B	20	0	0	0	0
6	A	15	0	21	0	0
6	B	15	0	21	1	0
7	A	505	0	0	12	0
7	B	457	0	0	3	0
All	All	9008	0	7796	61	0

The all-atom clashscore is defined as the number of clashes found per 1000 atoms (including hydrogen atoms). The all-atom clashscore for this structure is 4.

All (61) close contacts within the same asymmetric unit are listed below, sorted by their clash magnitude.

Atom-1	Atom-2	Interatomic distance (Å)	Clash overlap (Å)
1:B:1:ALA:HB2	1:B:27:ASP:OD1	1.43	1.15
1:A:457[B]:VAL:HG12	1:A:493:LEU:HD23	1.36	1.02
1:B:361[A]:MET:CE	1:B:463:ARG:HA	1.95	0.96
1:B:361[A]:MET:HE1	1:B:463:ARG:HA	1.49	0.91
1:A:457[B]:VAL:HG12	1:A:493:LEU:CD2	2.01	0.89
1:A:405:ASP:OD1	7:A:2429:HOH:O	1.93	0.87
1:A:371:LEU:O	1:A:433[A]:ARG:HD2	1.86	0.75
1:B:361[A]:MET:HE1	1:B:463:ARG:CG	2.16	0.75
1:B:361[A]:MET:HE3	1:B:463:ARG:HA	1.72	0.71
1:B:361[A]:MET:HE1	1:B:463:ARG:CA	2.20	0.70
1:B:410:THR:HG21	7:B:2382:HOH:O	1.93	0.69
1:B:467:ASP:HB3	1:B:483:ILE:HD11	1.75	0.67
1:A:57:GLN:HG3	7:A:2479:HOH:O	1.94	0.67
1:B:328:HIS:HD2	7:B:2322:HOH:O	1.79	0.66
5:A:1506:SO4:O3	7:A:2502:HOH:O	2.12	0.66
1:A:328:HIS:HD2	7:A:2368:HOH:O	1.80	0.65
1:B:165:LEU:HD22	1:B:172:VAL:HB	1.84	0.59

Continued on next page...

Continued from previous page...

Atom-1	Atom-2	Interatomic distance (Å)	Clash overlap (Å)
1:A:300:GLU:CG	7:A:2330:HOH:O	2.52	0.58
1:B:1:ALA:CB	1:B:27:ASP:OD1	2.36	0.57
1:A:60:HIS:HD2	1:A:481:GLU:OE2	1.87	0.57
1:B:474:ASP:HB3	1:B:477:VAL:HG22	1.89	0.54
1:B:361[A]:MET:HE1	1:B:463:ARG:CB	2.40	0.52
1:A:75:PHE:HB2	1:A:433[B]:ARG:HG2	1.93	0.51
1:A:57:GLN:NE2	7:A:2087:HOH:O	2.44	0.51
1:A:112:GLU:HG2	7:A:2155:HOH:O	2.11	0.51
1:A:451:HIS:ND1	7:A:2465:HOH:O	2.34	0.50
1:A:56:ILE:HG21	1:A:477:VAL:HG12	1.94	0.48
1:B:361[A]:MET:HE1	1:B:463:ARG:HG2	1.93	0.48
1:A:60:HIS:CD2	1:A:481:GLU:OE2	2.67	0.47
1:A:467:ASP:HB3	1:A:483:ILE:HD11	1.96	0.47
1:A:462:ASN:HB2	1:A:484:SER:OG	2.16	0.46
1:A:60:HIS:HE1	7:A:2099:HOH:O	1.97	0.46
1:B:408:LYS:O	1:B:410:THR:HG23	2.16	0.46
1:A:451:HIS:HE2	1:A:457[B]:VAL:HG11	1.81	0.45
1:A:451:HIS:CD2	1:A:457[A]:VAL:CG2	3.00	0.45
1:A:111:GLU:O	1:A:425:LYS:NZ	2.50	0.45
1:A:338:ALA:HB3	1:A:378:TRP:HA	1.99	0.45
1:A:343:VAL:HG21	1:A:359:ARG:CG	2.47	0.44
1:A:76:GLN:OE1	1:A:433[A]:ARG:HD3	2.17	0.44
1:A:165:LEU:CD2	1:A:172:VAL:HB	2.48	0.44
1:A:40:TYR:O	1:A:490:HIS:HA	2.18	0.44
1:B:176:ALA:HB2	1:B:227:PHE:CE2	2.53	0.43
1:A:433[B]:ARG:HG3	1:A:434:VAL:N	2.33	0.43
1:A:346:LYS:HB2	1:A:349:GLU:HG3	2.01	0.42
1:B:116:TYR:OH	1:B:420:LEU:HD13	2.20	0.42
1:B:361[A]:MET:HE1	1:B:463:ARG:HG3	1.99	0.42
1:A:-1:GLU:N	7:A:2001:HOH:O	2.53	0.42
1:B:2:ARG:NE	7:B:2003:HOH:O	2.52	0.41
1:B:357:TRP:O	1:B:361[A]:MET:HG3	2.20	0.41
1:B:361[A]:MET:CE	1:B:463:ARG:CG	2.94	0.41
1:A:104:LEU:C	1:A:104:LEU:HD23	2.41	0.41
1:B:243:GLY:O	1:B:244:TYR:C	2.59	0.41
1:A:109:PHE:O	1:A:168:ALA:HA	2.20	0.41
1:A:135:TYR:O	1:A:147:PHE:HA	2.20	0.41
1:B:340:GLU:OE2	6:B:1504:NBV:H7C1	2.21	0.41
1:B:127:ASP:HB3	1:B:246:PHE:CG	2.56	0.40
1:A:219:ALA:O	1:A:223:HIS:HD2	2.04	0.40
1:A:156:LEU:HD12	7:A:2123:HOH:O	2.22	0.40

Continued on next page...

Continued from previous page...

Atom-1	Atom-2	Interatomic distance (Å)	Clash overlap (Å)
1:A:181:SER:HA	1:A:209:TRP:CZ3	2.57	0.40
1:B:135:TYR:O	1:B:147:PHE:HA	2.21	0.40
1:A:169[B]:GLN:HG2	7:A:2229:HOH:O	2.22	0.40

There are no symmetry-related clashes.

5.3 Torsion angles [i](#)

5.3.1 Protein backbone [i](#)

In the following table, the Percentiles column shows the percent Ramachandran outliers of the chain as a percentile score with respect to all X-ray entries followed by that with respect to entries of similar resolution.

The Analysed column shows the number of residues for which the backbone conformation was analysed, and the total number of residues.

Mol	Chain	Analysed	Favoured	Allowed	Outliers	Percentiles	
1	A	499/505 (99%)	479 (96%)	18 (4%)	2 (0%)	36	24
1	B	499/505 (99%)	479 (96%)	17 (3%)	3 (1%)	27	15
All	All	998/1010 (99%)	958 (96%)	35 (4%)	5 (0%)	31	18

All (5) Ramachandran outliers are listed below:

Mol	Chain	Res	Type
1	B	233	GLU
1	A	233	GLU
1	A	281	LEU
1	B	281	LEU
1	B	381	TRP

5.3.2 Protein sidechains [i](#)

In the following table, the Percentiles column shows the percent sidechain outliers of the chain as a percentile score with respect to all X-ray entries followed by that with respect to entries of similar resolution.

The Analysed column shows the number of residues for which the sidechain conformation was analysed, and the total number of residues.

Mol	Chain	Analysed	Rotameric	Outliers	Percentiles	
1	A	422/432 (98%)	411 (97%)	11 (3%)	49	39
1	B	420/432 (97%)	414 (99%)	6 (1%)	69	65
All	All	842/864 (98%)	825 (98%)	17 (2%)	60	51

All (17) residues with a non-rotameric sidechain are listed below:

Mol	Chain	Res	Type
1	A	57	GLN
1	A	242	SER
1	A	312	TRP
1	A	335	MET
1	A	370	ASN
1	A	381	TRP
1	A	420	LEU
1	A	433[A]	ARG
1	A	433[B]	ARG
1	A	470	LEU
1	A	483	ILE
1	B	226	GLN
1	B	312	TRP
1	B	335	MET
1	B	381	TRP
1	B	394	VAL
1	B	420	LEU

Some sidechains can be flipped to improve hydrogen bonding and reduce clashes. All (12) such sidechains are listed below:

Mol	Chain	Res	Type
1	A	57	GLN
1	A	60	HIS
1	A	146	ASN
1	A	223	HIS
1	A	328	HIS
1	A	350	GLN
1	A	370	ASN
1	A	396	ASN
1	A	497	GLN
1	B	328	HIS
1	B	350	GLN
1	B	396	ASN

5.3.3 RNA ⓘ

There are no RNA molecules in this entry.

5.4 Non-standard residues in protein, DNA, RNA chains ⓘ

There are no non-standard protein/DNA/RNA residues in this entry.

5.5 Carbohydrates ⓘ

There are no carbohydrates in this entry.

5.6 Ligand geometry ⓘ

19 ligands are modelled in this entry.

In the following table, the Counts columns list the number of bonds (or angles) for which Mogul statistics could be retrieved, the number of bonds (or angles) that are observed in the model and the number of bonds (or angles) that are defined in the Chemical Component Dictionary. The Link column lists molecule types, if any, to which the group is linked. The Z score for a bond length (or angle) is the number of standard deviations the observed value is removed from the expected value. A bond length (or angle) with $|Z| > 2$ is considered an outlier worth inspection. RMSZ is the root-mean-square of all Z scores of the bond lengths (or angles).

Mol	Type	Chain	Res	Link	Bond lengths			Bond angles		
					Counts	RMSZ	$\# Z > 2$	Counts	RMSZ	$\# Z > 2$
2	NAG	A	1498	1,2,4	14,14,15	0.63	0	17,19,21	1.22	2 (11%)
2	NAG	A	1499	3,2	14,14,15	0.62	0	17,19,21	1.70	3 (17%)
3	BMA	A	1500	2	11,11,12	0.67	0	15,15,17	1.06	1 (6%)
4	FUC	A	1501	2	9,10,11	0.83	0	13,14,16	0.73	0
5	SO4	A	1502	-	4,4,4	0.10	0	6,6,6	0.71	0
6	NBV	A	1503	-	15,15,15	1.03	1 (6%)	17,20,20	1.06	1 (5%)
5	SO4	A	1504	-	4,4,4	0.22	0	6,6,6	0.48	0
5	SO4	A	1505	-	4,4,4	0.36	0	6,6,6	0.38	0
5	SO4	A	1506	-	4,4,4	0.15	0	6,6,6	0.19	0
2	NAG	B	1498	1,2,4	14,14,15	0.68	0	17,19,21	1.13	2 (11%)
2	NAG	B	1499	3,2	14,14,15	0.66	0	17,19,21	0.95	0
3	BMA	B	1500	2	11,11,12	0.59	0	15,15,17	0.95	0
4	FUC	B	1501	2	9,10,11	0.77	0	13,14,16	0.75	0
5	SO4	B	1502	-	4,4,4	0.27	0	6,6,6	0.65	0
2	NAG	B	1503	1	14,14,15	0.68	0	17,19,21	0.90	0
6	NBV	B	1504	-	15,15,15	0.90	1 (6%)	17,20,20	1.20	3 (17%)

Mol	Type	Chain	Res	Link	Bond lengths			Bond angles		
					Counts	RMSZ	# Z > 2	Counts	RMSZ	# Z > 2
5	SO4	B	1505	-	4,4,4	0.21	0	6,6,6	0.40	0
5	SO4	B	1506	-	4,4,4	0.28	0	6,6,6	0.32	0
5	SO4	B	1507	-	4,4,4	0.23	0	6,6,6	0.21	0

In the following table, the Chirals column lists the number of chiral outliers, the number of chiral centers analysed, the number of these observed in the model and the number defined in the Chemical Component Dictionary. Similar counts are reported in the Torsion and Rings columns. '-' means no outliers of that kind were identified.

Mol	Type	Chain	Res	Link	Chirals	Torsions	Rings
2	NAG	A	1498	1,2,4	-	0/6/23/26	0/1/1/1
2	NAG	A	1499	3,2	-	0/6/23/26	0/1/1/1
3	BMA	A	1500	2	-	0/2/19/22	0/1/1/1
4	FUC	A	1501	2	-	0/0/17/20	0/1/1/1
5	SO4	A	1502	-	-	0/0/0/0	0/0/0/0
6	NBV	A	1503	-	-	0/6/26/26	0/1/1/1
5	SO4	A	1504	-	-	0/0/0/0	0/0/0/0
5	SO4	A	1505	-	-	0/0/0/0	0/0/0/0
5	SO4	A	1506	-	-	0/0/0/0	0/0/0/0
2	NAG	B	1498	1,2,4	-	0/6/23/26	0/1/1/1
2	NAG	B	1499	3,2	-	0/6/23/26	0/1/1/1
3	BMA	B	1500	2	1/1/4/5	0/2/19/22	0/1/1/1
4	FUC	B	1501	2	-	0/0/17/20	0/1/1/1
5	SO4	B	1502	-	-	0/0/0/0	0/0/0/0
2	NAG	B	1503	1	-	0/6/23/26	0/1/1/1
6	NBV	B	1504	-	-	0/6/26/26	0/1/1/1
5	SO4	B	1505	-	-	0/0/0/0	0/0/0/0
5	SO4	B	1506	-	-	0/0/0/0	0/0/0/0
5	SO4	B	1507	-	-	0/0/0/0	0/0/0/0

All (2) bond length outliers are listed below:

Mol	Chain	Res	Type	Atoms	Z	Observed(Å)	Ideal(Å)
6	B	1504	NBV	C12-C11	2.26	1.55	1.52
6	A	1503	NBV	C12-C11	2.78	1.56	1.52

All (12) bond angle outliers are listed below:

Mol	Chain	Res	Type	Atoms	Z	Observed(°)	Ideal(°)
6	B	1504	NBV	O7-C8-C9	-2.47	105.36	110.19
2	A	1498	NAG	C2-N2-C7	-2.45	119.37	122.94
2	A	1498	NAG	O5-C1-C2	-2.24	108.44	111.52

Continued on next page...

Continued from previous page...

Mol	Chain	Res	Type	Atoms	Z	Observed(°)	Ideal(°)
2	A	1499	NAG	C4-C3-C2	-2.17	107.84	111.02
6	B	1504	NBV	O1-C10-C9	-2.08	105.49	110.34
2	B	1498	NAG	O7-C7-C8	-2.04	118.39	122.07
2	B	1498	NAG	C2-N2-C7	2.04	125.92	122.94
6	A	1503	NBV	C7-C8-C9	2.32	112.87	110.21
3	A	1500	BMA	C1-O5-C5	2.59	115.75	112.19
2	A	1499	NAG	C1-C2-N2	2.81	115.29	110.49
6	B	1504	NBV	O1-C10-C11	3.17	115.55	109.82
2	A	1499	NAG	C2-N2-C7	4.04	128.84	122.94

All (1) chirality outliers are listed below:

Mol	Chain	Res	Type	Atom
3	B	1500	BMA	C1

There are no torsion outliers.

There are no ring outliers.

2 monomers are involved in 2 short contacts:

Mol	Chain	Res	Type	Clashes	Symm-Clashes
5	A	1506	SO4	1	0
6	B	1504	NBV	1	0

5.7 Other polymers [i](#)

There are no such residues in this entry.

5.8 Polymer linkage issues [i](#)

There are no chain breaks in this entry.

6 Fit of model and data [i](#)

6.1 Protein, DNA and RNA chains [i](#)

In the following table, the column labelled ‘#RSRZ> 2’ contains the number (and percentage) of RSRZ outliers, followed by percent RSRZ outliers for the chain as percentile scores relative to all X-ray entries and entries of similar resolution. The OWAB column contains the minimum, median, 95th percentile and maximum values of the occupancy-weighted average B-factor per residue. The column labelled ‘Q< 0.9’ lists the number of (and percentage) of residues with an average occupancy less than 0.9.

Mol	Chain	Analysed	<RSRZ>	#RSRZ>2	OWAB(Å ²)	Q<0.9
1	A	496/505 (98%)	-0.36	8 (1%) 72 79	8, 16, 30, 50	0
1	B	497/505 (98%)	-0.34	10 (2%) 65 73	11, 19, 31, 49	0
All	All	993/1010 (98%)	-0.35	18 (1%) 68 76	8, 17, 31, 50	0

All (18) RSRZ outliers are listed below:

Mol	Chain	Res	Type	RSRZ
1	B	34	LEU	6.0
1	B	497	GLN	3.7
1	A	33	ALA	3.3
1	B	31	PHE	3.3
1	A	169[A]	GLN	3.2
1	B	28	PRO	3.2
1	A	347	PHE	3.2
1	B	1	ALA	3.1
1	A	476	ALA	2.7
1	B	476	ALA	2.5
1	A	1	ALA	2.4
1	A	32	PRO	2.4
1	B	33	ALA	2.4
1	B	27	ASP	2.3
1	A	-1	GLU	2.2
1	B	35	GLY	2.0
1	A	27	ASP	2.0
1	B	63	THR	2.0

6.2 Non-standard residues in protein, DNA, RNA chains [i](#)

There are no non-standard protein/DNA/RNA residues in this entry.

6.3 Carbohydrates [i](#)

There are no carbohydrates in this entry.

6.4 Ligands [i](#)

In the following table, the Atoms column lists the number of modelled atoms in the group and the number defined in the chemical component dictionary. The B-factors column lists the minimum, median, 95th percentile and maximum values of B factors of atoms in the group. The column labelled 'Q< 0.9' lists the number of atoms with occupancy less than 0.9.

Mol	Type	Chain	Res	Atoms	RSCC	RSR	B-factors(\AA^2)	Q<0.9
3	BMA	A	1500	11/12	0.60	0.29	65,69,70,70	0
2	NAG	B	1503	14/15	0.71	0.37	52,58,60,61	0
3	BMA	B	1500	11/12	0.71	0.36	65,69,70,70	0
4	FUC	A	1501	10/11	0.77	0.25	45,49,51,51	0
2	NAG	A	1499	14/15	0.82	0.20	42,47,51,55	0
2	NAG	B	1499	14/15	0.91	0.17	40,43,49,53	0
5	SO4	B	1507	5/5	0.92	0.22	44,49,50,50	0
4	FUC	B	1501	10/11	0.92	0.21	43,45,46,46	0
5	SO4	A	1506	5/5	0.92	0.26	51,53,55,55	0
2	NAG	B	1498	14/15	0.94	0.10	27,31,37,40	0
2	NAG	A	1498	14/15	0.94	0.13	25,32,37,38	0
6	NBV	B	1504	15/15	0.95	0.10	16,20,24,24	0
6	NBV	A	1503	15/15	0.96	0.08	9,14,18,19	0
5	SO4	A	1505	5/5	0.97	0.12	35,37,39,39	0
5	SO4	B	1506	5/5	0.97	0.13	39,41,42,42	0
5	SO4	A	1504	5/5	0.99	0.09	27,28,32,32	0
5	SO4	B	1505	5/5	0.99	0.08	32,33,34,35	0
5	SO4	A	1502	5/5	0.99	0.06	21,24,25,26	0
5	SO4	B	1502	5/5	0.99	0.05	21,22,23,23	0

6.5 Other polymers [i](#)

There are no such residues in this entry.