



# Full wwPDB X-ray Structure Validation Report ⓘ

Mar 8, 2018 – 07:38 pm GMT

PDB ID : 2V3V  
Title : A New Catalytic Mechanism of Periplasmic Nitrate Reductase from *Desulfovibrio desulfuricans* ATCC 27774 from Crystallographic and EPR Data and based on detailed analysis of the sixth ligand  
Authors : Najmudin, S.; Gonzalez, P.J.; Trincao, J.; Coelho, C.; Mukhopadhyay, A.; Romao, C.C.; Moura, I.; Moura, J.J.; Brondino, C.D.; Romao, M.J.  
Deposited on : 2007-06-22  
Resolution : 1.99 Å(reported)

This is a Full wwPDB X-ray Structure Validation Report for a publicly released PDB entry.

We welcome your comments at [validation@mail.wwpdb.org](mailto:validation@mail.wwpdb.org)

A user guide is available at

<https://www.wwpdb.org/validation/2017/XrayValidationReportHelp>

with specific help available everywhere you see the ⓘ symbol.

---

The following versions of software and data (see [references ⓘ](#)) were used in the production of this report:

MolProbity : 4.02b-467  
Mogul : 1.7.3 (157068), CSD as539be (2018)  
Xtriage (Phenix) : 1.13  
EDS : trunk30967  
Percentile statistics : 20171227.v01 (using entries in the PDB archive December 27th 2017)  
Refmac : 5.8.0158  
CCP4 : 7.0 (Gargrove)  
Ideal geometry (proteins) : Engh & Huber (2001)  
Ideal geometry (DNA, RNA) : Parkinson et al. (1996)  
Validation Pipeline (wwPDB-VP) : trunk30967

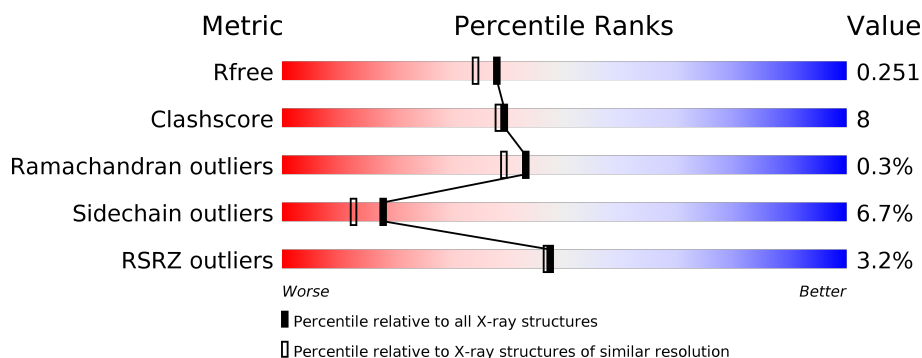
# 1 Overall quality at a glance

The following experimental techniques were used to determine the structure:

*X-RAY DIFFRACTION*

The reported resolution of this entry is 1.99 Å.

Percentile scores (ranging between 0-100) for global validation metrics of the entry are shown in the following graphic. The table shows the number of entries on which the scores are based.



Metric	Whole archive (#Entries)	Similar resolution (#Entries, resolution range(Å))
$R_{free}$	111664	7193 (2.00-2.00)
Clashscore	122126	8267 (2.00-2.00)
Ramachandran outliers	120053	8166 (2.00-2.00)
Sidechain outliers	120020	8165 (2.00-2.00)
RSRZ outliers	108989	7011 (2.00-2.00)

The table below summarises the geometric issues observed across the polymeric chains and their fit to the electron density. The red, orange, yellow and green segments on the lower bar indicate the fraction of residues that contain outliers for  $\geq 3$ , 2, 1 and 0 types of geometric quality criteria. A grey segment represents the fraction of residues that are not modelled. The numeric value for each fraction is indicated below the corresponding segment, with a dot representing fractions  $\leq 5\%$ . The upper red bar (where present) indicates the fraction of residues that have poor fit to the electron density. The numeric value is given above the bar.

Mol	Chain	Length	Quality of chain
1	A	723	<div> <div>3%</div> <div>84%</div> <div>12%</div> <div>.</div> </div>

The following table lists non-polymeric compounds, carbohydrate monomers and non-standard residues in protein, DNA, RNA chains that are outliers for geometric or electron-density-fit criteria:

Mol	Type	Chain	Res	Chirality	Geometry	Clashes	Electron density
6	LCP	A	814	-	X	X	-
6	LCP	A	815	-	X	X	-

*Continued on next page...*

*Continued from previous page...*

Mol	Type	Chain	Res	Chirality	Geometry	Clashes	Electron density
6	LCP	A	816	-	X	-	-
6	LCP	A	817	-	X	-	-

## 2 Entry composition [i](#)

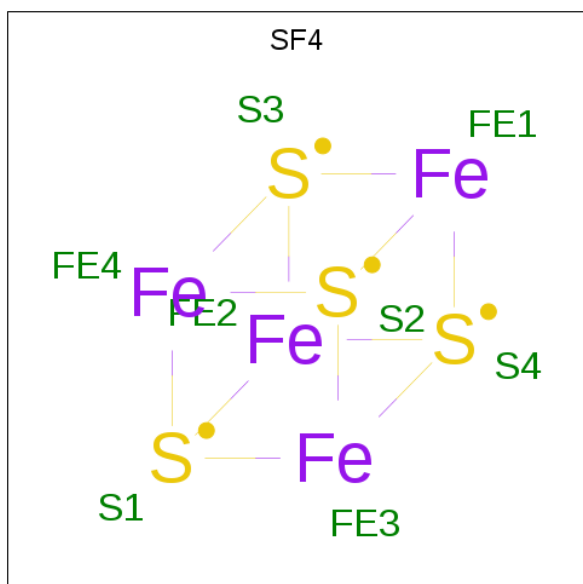
There are 7 unique types of molecules in this entry. The entry contains 6558 atoms, of which 0 are hydrogens and 0 are deuteriums.

In the tables below, the ZeroOcc column contains the number of atoms modelled with zero occupancy, the AltConf column contains the number of residues with at least one atom in alternate conformation and the Trace column contains the number of residues modelled with at most 2 atoms.

- Molecule 1 is a protein called PERIPLASMIC NITRATE REDUCTASE.

Mol	Chain	Residues	Atoms					ZeroOcc	AltConf	Trace
			Total	C	N	O	S			
1	A	721	5677	3588	1016	1030	43	0	10	0

- Molecule 2 is IRON/SULFUR CLUSTER (three-letter code: SF4) (formula: Fe<sub>4</sub>S<sub>4</sub>).



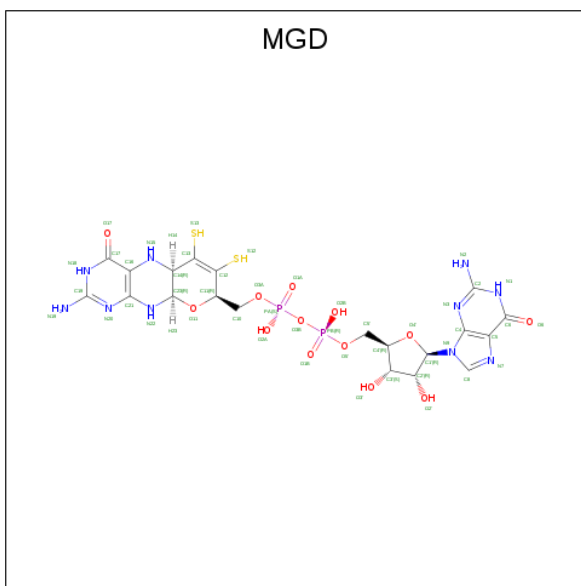
Mol	Chain	Residues	Atoms			ZeroOcc	AltConf
			Total	Fe	S		
2	A	1	8	4	4	0	0

- Molecule 3 is MOLYBDENUM ATOM (three-letter code: MO) (formula: Mo).

Mol	Chain	Residues	Atoms		ZeroOcc	AltConf
			Total	Mo		
3	A	1	1	1	0	0

- Molecule 4 is 2-AMINO-5,6-DIMERCAPTO-7-METHYL-3,7,8A,9-TETRAHYDRO-8-OXA-1,3,9,10-TETRAAZA-ANTHRACEN-4-ONE GUANOSINE DINUCLEOTIDE

(three-letter code: MGD) (formula: C<sub>20</sub>H<sub>26</sub>N<sub>10</sub>O<sub>13</sub>P<sub>2</sub>S<sub>2</sub>).

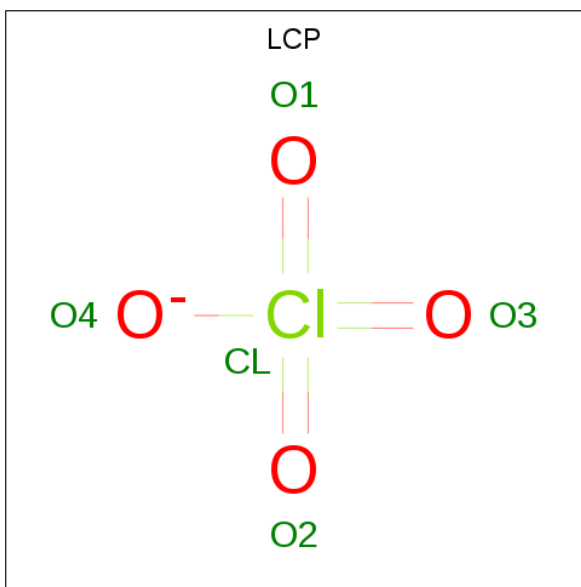


Mol	Chain	Residues	Atoms						ZeroOcc	AltConf
4	A	1	Total	C	N	O	P	S	0	0
			47	20	10	13	2	2		
4	A	1	Total	C	N	O	P	S	0	0
			47	20	10	13	2	2		

- Molecule 5 is UNKNOWN ATOM OR ION (three-letter code: UNX) (formula: X).

Mol	Chain	Residues	Atoms		ZeroOcc	AltConf
5	A	1	Total	X	0	0
			1	1		

- Molecule 6 is PERCHLORATE ION (three-letter code: LCP) (formula: ClO<sub>4</sub>).



Mol	Chain	Residues	Atoms			ZeroOcc	AltConf
6	A	1	Total	Cl	O	0	0
			5	1	4		
6	A	1	Total	Cl	O	0	0
			5	1	4		
6	A	1	Total	Cl	O	0	0
			5	1	4		
6	A	1	Total	Cl	O	0	0
			5	1	4		

- Molecule 7 is water.

Mol	Chain	Residues	Atoms		ZeroOcc	AltConf
7	A	757	Total	O	0	0
			757	757		



## 4 Data and refinement statistics

Property	Value	Source
Space group	P 31 2 1	Depositor
Cell constants a, b, c, $\alpha$ , $\beta$ , $\gamma$	106.57Å 106.57Å 135.48Å 90.00° 90.00° 120.00°	Depositor
Resolution (Å)	92.45 – 1.99 46.14 – 1.93	Depositor EDS
% Data completeness (in resolution range)	97.1 (92.45-1.99) 95.0 (46.14-1.93)	Depositor EDS
$R_{merge}$	0.11	Depositor
$R_{sym}$	(Not available)	Depositor
$\langle I/\sigma(I) \rangle$ <sup>1</sup>	1.51 (at 1.94Å)	Xtriage
Refinement program	REFMAC 5.2.0019	Depositor
R, $R_{free}$	0.182 , 0.246 0.193 , 0.251	Depositor DCC
$R_{free}$ test set	2587 reflections (4.05%)	wwPDB-VP
Wilson B-factor (Å <sup>2</sup> )	18.1	Xtriage
Anisotropy	0.269	Xtriage
Bulk solvent $k_{sol}$ (e/Å <sup>3</sup> ), $B_{sol}$ (Å <sup>2</sup> )	0.34 , 46.4	EDS
L-test for twinning <sup>2</sup>	$\langle  L  \rangle = 0.48$ , $\langle L^2 \rangle = 0.31$	Xtriage
Estimated twinning fraction	0.030 for -h,-k,l	Xtriage
$F_o, F_c$ correlation	0.94	EDS
Total number of atoms	6558	wwPDB-VP
Average B, all atoms (Å <sup>2</sup> )	19.0	wwPDB-VP

Xtriage's analysis on translational NCS is as follows: *The largest off-origin peak in the Patterson function is 3.06% of the height of the origin peak. No significant pseudotranslation is detected.*

<sup>1</sup>Intensities estimated from amplitudes.

<sup>2</sup>Theoretical values of  $\langle |L| \rangle$ ,  $\langle L^2 \rangle$  for acentric reflections are 0.5, 0.333 respectively for untwinned datasets, and 0.375, 0.2 for perfectly twinned datasets.



## 5 Model quality

### 5.1 Standard geometry

Bond lengths and bond angles in the following residue types are not validated in this section: UNX, MO, SF4, LCP, MGD

The Z score for a bond length (or angle) is the number of standard deviations the observed value is removed from the expected value. A bond length (or angle) with  $|Z| > 5$  is considered an outlier worth inspection. RMSZ is the root-mean-square of all Z scores of the bond lengths (or angles).

Mol	Chain	Bond lengths		Bond angles	
		RMSZ	$\# Z  > 5$	RMSZ	$\# Z  > 5$
1	A	0.66	2/5853 (0.0%)	0.78	14/7940 (0.2%)

All (2) bond length outliers are listed below:

Mol	Chain	Res	Type	Atoms	Z	Observed(Å)	Ideal(Å)
1	A	249[A]	ARG	CG-CD	12.52	1.83	1.51
1	A	249[B]	ARG	CG-CD	12.52	1.83	1.51

All (14) bond angle outliers are listed below:

Mol	Chain	Res	Type	Atoms	Z	Observed( $^{\circ}$ )	Ideal( $^{\circ}$ )
1	A	617	ARG	NE-CZ-NH2	-10.90	114.85	120.30
1	A	617	ARG	NE-CZ-NH1	9.55	125.08	120.30
1	A	67	LEU	CA-CB-CG	7.17	131.80	115.30
1	A	76	LEU	CA-CB-CG	6.29	129.75	115.30
1	A	249[A]	ARG	CG-CD-NE	6.28	124.98	111.80
1	A	249[B]	ARG	CG-CD-NE	6.28	124.98	111.80
1	A	209[A]	ASN	N-CA-CB	6.27	121.89	110.60
1	A	209[B]	ASN	N-CA-CB	6.27	121.89	110.60
1	A	339	THR	CB-CA-C	-5.96	95.51	111.60
1	A	335	ARG	NE-CZ-NH2	-5.63	117.49	120.30
1	A	617	ARG	CG-CD-NE	-5.53	100.20	111.80
1	A	184	LEU	CA-CB-CG	5.30	127.49	115.30
1	A	249[A]	ARG	CB-CG-CD	5.08	124.80	111.60
1	A	249[B]	ARG	CB-CG-CD	5.08	124.80	111.60

There are no chirality outliers.

There are no planarity outliers.

## 5.2 Too-close contacts ⓘ

In the following table, the Non-H and H(model) columns list the number of non-hydrogen atoms and hydrogen atoms in the chain respectively. The H(added) column lists the number of hydrogen atoms added and optimized by MolProbity. The Clashes column lists the number of clashes within the asymmetric unit, whereas Symm-Clashes lists symmetry related clashes.

Mol	Chain	Non-H	H(model)	H(added)	Clashes	Symm-Clashes
1	A	5677	0	5597	89	0
2	A	8	0	0	0	0
3	A	1	0	0	0	0
4	A	94	0	44	12	0
5	A	1	0	0	0	0
6	A	20	0	0	6	0
7	A	757	0	0	21	2
All	All	6558	0	5641	91	2

The all-atom clashscore is defined as the number of clashes found per 1000 atoms (including hydrogen atoms). The all-atom clashscore for this structure is 8.

All (91) close contacts within the same asymmetric unit are listed below, sorted by their clash magnitude.

Atom-1	Atom-2	Interatomic distance (Å)	Clash overlap (Å)
1:A:249[A]:ARG:CG	1:A:249[A]:ARG:CD	1.83	1.54
1:A:249[B]:ARG:CG	1:A:249[B]:ARG:CD	1.89	1.49
1:A:249[B]:ARG:CB	1:A:249[B]:ARG:CD	2.37	1.02
1:A:518:GLU:HG3	1:A:540:ARG:HG3	1.50	0.92
1:A:300:ALA:O	1:A:335:ARG:NH2	2.07	0.88
1:A:714:LYS:HE3	4:A:812:MGD:H5'2	1.57	0.84
1:A:714:LYS:HE3	4:A:812:MGD:C5'	2.09	0.82
1:A:121:ASN:HD22	1:A:133:VAL:HG11	1.45	0.80
1:A:102[B]:ASN:ND2	7:A:2159:HOH:O	2.15	0.78
1:A:168:THR:HG22	1:A:299:SER:HB3	1.67	0.76
1:A:373:LYS:HB3	7:A:2400:HOH:O	1.85	0.74
6:A:815:LCP:O2	7:A:2754:HOH:O	2.07	0.73
1:A:286:VAL:HG23	7:A:2344:HOH:O	1.89	0.72
1:A:339:THR:HG23	7:A:2372:HOH:O	1.90	0.71
1:A:714:LYS:CE	4:A:812:MGD:H5'2	2.21	0.71
1:A:657:HIS:HD2	1:A:676:VAL:H	1.35	0.70
1:A:221:ARG:HD2	7:A:2274:HOH:O	1.94	0.67
6:A:815:LCP:O3	7:A:2753:HOH:O	2.12	0.67
1:A:155:ASP:HB2	6:A:816:LCP:O4	1.96	0.65
1:A:277:LYS:O	1:A:280:GLU:HG3	1.97	0.63

*Continued on next page...*

*Continued from previous page...*

Atom-1	Atom-2	Interatomic distance (Å)	Clash overlap (Å)
1:A:518:GLU:CG	1:A:540:ARG:HG3	2.26	0.63
1:A:249[B]:ARG:CG	1:A:249[B]:ARG:NE	2.60	0.62
1:A:134:ASP:OD1	1:A:138:ARG:HD2	2.00	0.62
1:A:113:LEU:HD13	1:A:469:GLY:HA3	1.81	0.62
1:A:580:ARG:HD3	7:A:2308:HOH:O	2.00	0.61
1:A:249[B]:ARG:CD	1:A:249[B]:ARG:HB3	2.27	0.61
1:A:657:HIS:CD2	1:A:676:VAL:H	2.18	0.60
1:A:540:ARG:NH1	7:A:2557:HOH:O	2.05	0.60
1:A:359:LEU:HD21	6:A:814:LCP:O1	2.04	0.57
1:A:368:ALA:H	1:A:374:HIS:HD2	1.52	0.56
1:A:4:ARG:CG	1:A:5:PRO:HD3	2.36	0.56
1:A:500:GLU:OE1	1:A:504:ARG:HD2	2.06	0.56
1:A:556:GLU:HG3	7:A:2574:HOH:O	2.06	0.56
1:A:429:VAL:HG12	1:A:433:MET:CE	2.36	0.56
1:A:714:LYS:HE3	4:A:812:MGD:H5'1	1.88	0.55
1:A:540:ARG:NH2	7:A:2557:HOH:O	2.39	0.54
1:A:368:ALA:H	1:A:374:HIS:CD2	2.27	0.52
1:A:392:GLU:HB2	7:A:2186:HOH:O	2.09	0.52
1:A:429:VAL:HG12	1:A:433:MET:HE1	1.92	0.52
1:A:657:HIS:HD2	1:A:676:VAL:N	2.06	0.52
1:A:348:ASN:HB2	1:A:471:TYR:CD1	2.45	0.52
1:A:392:GLU:CB	7:A:2186:HOH:O	2.59	0.51
1:A:359:LEU:HD21	6:A:814:LCP:CL	2.47	0.51
1:A:121:ASN:HD21	1:A:125:LYS:NZ	2.09	0.51
1:A:646:ASN:HD22	1:A:649:ASP:H	1.59	0.51
1:A:168:THR:HG21	7:A:2363:HOH:O	2.10	0.51
1:A:345:GLY:HA3	4:A:812:MGD:C12	2.41	0.51
1:A:623:HIS:HD2	4:A:811:MGD:O2B	1.94	0.50
1:A:693:LYS:HE2	7:A:2725:HOH:O	2.12	0.50
1:A:617:ARG:NH2	4:A:811:MGD:O17	2.44	0.50
1:A:650:ALA:HA	1:A:653:THR:HG22	1.93	0.50
1:A:283:ARG:HD2	7:A:2342:HOH:O	2.11	0.50
1:A:666:ARG:NH1	7:A:2692:HOH:O	2.35	0.50
1:A:443:ILE:HG22	4:A:811:MGD:HN21	1.77	0.50
1:A:138:ARG:HD3	1:A:396:HIS:HB2	1.93	0.50
1:A:443:ILE:O	4:A:811:MGD:N2	2.34	0.49
1:A:4:ARG:HG3	1:A:5:PRO:HD3	1.94	0.49
1:A:249[B]:ARG:NH2	1:A:579:ASP:OD1	2.35	0.49
1:A:5:PRO:HG2	1:A:8:TRP:CZ2	2.48	0.48
1:A:168:THR:HG21	1:A:300:ALA:H	1.79	0.48
1:A:373:LYS:HE3	7:A:2395:HOH:O	2.13	0.48

*Continued on next page...*

Continued from previous page...

Atom-1	Atom-2	Interatomic distance (Å)	Clash overlap (Å)
1:A:136:ASN:ND2	1:A:417:THR:HG23	2.29	0.47
1:A:305:LEU:HA	1:A:341:PHE:O	2.14	0.47
1:A:136:ASN:OD1	1:A:137:PRO:HD3	2.13	0.47
1:A:93:ARG:HD2	1:A:505:ALA:O	2.15	0.46
1:A:121:ASN:HD21	1:A:125:LYS:HZ2	1.62	0.46
1:A:303:MET:HA	1:A:339:THR:O	2.17	0.45
1:A:4:ARG:CB	1:A:5:PRO:HD3	2.47	0.45
1:A:617:ARG:HH11	1:A:623:HIS:HE1	1.64	0.45
1:A:249[A]:ARG:HG2	1:A:250:TYR:CE1	2.52	0.44
1:A:518:GLU:HG3	1:A:540:ARG:CG	2.35	0.44
1:A:615:SER:HA	1:A:687:VAL:O	2.17	0.44
1:A:533:TYR:O	1:A:534:ASP:C	2.56	0.43
1:A:4:ARG:HH11	1:A:4:ARG:HG2	1.82	0.43
1:A:232:MET:O	1:A:236:ILE:HG13	2.18	0.43
1:A:141:MET:HB2	6:A:814:LCP:O4	2.19	0.43
1:A:155:ASP:OD1	1:A:156:GLU:N	2.50	0.43
1:A:443:ILE:C	4:A:811:MGD:HN22	2.21	0.43
1:A:379:GLU:HG3	1:A:389:ILE:HD12	2.01	0.42
1:A:140:CYS:O	1:A:710:GLU:OE2	2.37	0.42
1:A:442:CYS:SG	1:A:455:ALA:HB2	2.60	0.41
1:A:623:HIS:CE1	4:A:812:MGD:H15	2.38	0.41
1:A:50:GLY:HA2	1:A:53:LEU:HD22	2.03	0.41
1:A:618:VAL:HG13	7:A:2649:HOH:O	2.21	0.41
1:A:168:THR:CG2	7:A:2363:HOH:O	2.67	0.41
1:A:7:LYS:HB3	1:A:26:VAL:HG22	2.02	0.40
1:A:537:GLY:O	1:A:542:ARG:HD3	2.22	0.40
1:A:140:CYS:HB2	4:A:811:MGD:S13	2.61	0.40
1:A:487:PRO:HB2	1:A:491:CYS:HB2	2.02	0.40
1:A:217:HIS:CE1	1:A:219:ALA:HB2	2.57	0.40
1:A:7:LYS:HE2	7:A:2007:HOH:O	2.20	0.40

All (2) symmetry-related close contacts are listed below. The label for Atom-2 includes the symmetry operator and encoded unit-cell translations to be applied.

Atom-1	Atom-2	Interatomic distance (Å)	Clash overlap (Å)
7:A:2226:HOH:O	7:A:2227:HOH:O[6_765]	1.98	0.22
7:A:2226:HOH:O	7:A:2239:HOH:O[6_765]	2.06	0.14

## 5.3 Torsion angles [i](#)

### 5.3.1 Protein backbone [i](#)

In the following table, the Percentiles column shows the percent Ramachandran outliers of the chain as a percentile score with respect to all X-ray entries followed by that with respect to entries of similar resolution.

The Analysed column shows the number of residues for which the backbone conformation was analysed, and the total number of residues.

Mol	Chain	Analysed	Favoured	Allowed	Outliers	Percentiles	
1	A	729/723 (101%)	702 (96%)	25 (3%)	2 (0%)	43	39

All (2) Ramachandran outliers are listed below:

Mol	Chain	Res	Type
1	A	4	ARG
1	A	156	GLU

### 5.3.2 Protein sidechains [i](#)

In the following table, the Percentiles column shows the percent sidechain outliers of the chain as a percentile score with respect to all X-ray entries followed by that with respect to entries of similar resolution.

The Analysed column shows the number of residues for which the sidechain conformation was analysed, and the total number of residues.

Mol	Chain	Analysed	Rotameric	Outliers	Percentiles	
1	A	604/596 (101%)	562 (93%)	42 (7%)	16	11

All (42) residues with a non-rotameric sidechain are listed below:

Mol	Chain	Res	Type
1	A	7	LYS
1	A	22	VAL
1	A	45	LEU
1	A	53	LEU
1	A	67	LEU
1	A	76	LEU
1	A	79	VAL
1	A	82	ASP
1	A	134	ASP

*Continued on next page...*

*Continued from previous page...*

Mol	Chain	Res	Type
1	A	138	ARG
1	A	168	THR
1	A	176	ASN
1	A	177	THR
1	A	184	LEU
1	A	220	PHE
1	A	231	SER
1	A	249[A]	ARG
1	A	249[B]	ARG
1	A	280	GLU
1	A	339	THR
1	A	359	LEU
1	A	373	LYS
1	A	388	ARG
1	A	417	THR
1	A	467	ARG
1	A	471	TYR
1	A	498	LEU
1	A	510[A]	GLN
1	A	510[B]	GLN
1	A	511	LEU
1	A	520	VAL
1	A	540	ARG
1	A	543	LEU
1	A	580	ARG
1	A	616	MET
1	A	617	ARG
1	A	618	VAL
1	A	634	LEU
1	A	648	GLU
1	A	652	ARG
1	A	653	THR
1	A	656	LYS

Some sidechains can be flipped to improve hydrogen bonding and reduce clashes. All (9) such sidechains are listed below:

Mol	Chain	Res	Type
1	A	121	ASN
1	A	132	ASN
1	A	176	ASN
1	A	238	ASN
1	A	374	HIS

*Continued on next page...*

*Continued from previous page...*

Mol	Chain	Res	Type
1	A	490	GLN
1	A	623	HIS
1	A	646	ASN
1	A	657	HIS

### 5.3.3 RNA ⓘ

There are no RNA molecules in this entry.

### 5.4 Non-standard residues in protein, DNA, RNA chains ⓘ

There are no non-standard protein/DNA/RNA residues in this entry.

### 5.5 Carbohydrates ⓘ

There are no carbohydrates in this entry.

### 5.6 Ligand geometry ⓘ

Of 9 ligands modelled in this entry, 1 is unknown and 1 is monoatomic - leaving 7 for Mogul analysis.

In the following table, the Counts columns list the number of bonds (or angles) for which Mogul statistics could be retrieved, the number of bonds (or angles) that are observed in the model and the number of bonds (or angles) that are defined in the Chemical Component Dictionary. The Link column lists molecule types, if any, to which the group is linked. The Z score for a bond length (or angle) is the number of standard deviations the observed value is removed from the expected value. A bond length (or angle) with  $|Z| > 2$  is considered an outlier worth inspection. RMSZ is the root-mean-square of all Z scores of the bond lengths (or angles).

Mol	Type	Chain	Res	Link	Bond lengths			Bond angles		
					Counts	RMSZ	$\# Z  > 2$	Counts	RMSZ	$\# Z  > 2$
2	SF4	A	800	1	0,12,12	0.00	-	0,24,24	0.00	-
4	MGD	A	811	3	41,52,52	1.54	5 (12%)	39,81,81	2.02	11 (28%)
4	MGD	A	812	3	41,52,52	1.32	6 (14%)	39,81,81	2.63	19 (48%)
6	LCP	A	814	-	4,4,4	7.90	4 (100%)	6,6,6	0.46	0
6	LCP	A	815	-	4,4,4	8.00	4 (100%)	6,6,6	0.36	0
6	LCP	A	816	-	4,4,4	7.92	4 (100%)	6,6,6	0.73	0
6	LCP	A	817	-	4,4,4	7.89	4 (100%)	6,6,6	0.37	0

In the following table, the Chirals column lists the number of chiral outliers, the number of chiral centers analysed, the number of these observed in the model and the number defined in the Chemical Component Dictionary. Similar counts are reported in the Torsion and Rings columns. '-' means no outliers of that kind were identified.

Mol	Type	Chain	Res	Link	Chirals	Torsions	Rings
2	SF4	A	800	1	-	0/0/48/48	0/6/5/5
4	MGD	A	811	3	-	0/18/66/66	0/6/6/6
4	MGD	A	812	3	-	0/18/66/66	0/6/6/6
6	LCP	A	814	-	-	0/0/0/0	0/0/0/0
6	LCP	A	815	-	-	0/0/0/0	0/0/0/0
6	LCP	A	816	-	-	0/0/0/0	0/0/0/0
6	LCP	A	817	-	-	0/0/0/0	0/0/0/0

All (27) bond length outliers are listed below:

Mol	Chain	Res	Type	Atoms	Z	Observed(Å)	Ideal(Å)
4	A	812	MGD	O5'-C5'	-2.21	1.36	1.44
4	A	812	MGD	C6-N1	2.06	1.36	1.33
4	A	811	MGD	C23-C14	2.65	1.55	1.53
4	A	812	MGD	C5-C4	2.77	1.46	1.40
4	A	811	MGD	C5-C4	2.99	1.47	1.40
4	A	812	MGD	C16-C21	3.33	1.47	1.41
4	A	811	MGD	C16-C21	3.39	1.47	1.41
4	A	812	MGD	C17-C16	3.66	1.45	1.41
4	A	812	MGD	C6-C5	3.91	1.48	1.41
4	A	811	MGD	C6-C5	4.49	1.49	1.41
4	A	811	MGD	C17-C16	5.43	1.47	1.41
6	A	816	LCP	O4-CL	7.21	1.82	1.41
6	A	815	LCP	O4-CL	7.28	1.82	1.41
6	A	814	LCP	O4-CL	7.28	1.82	1.41
6	A	817	LCP	O4-CL	7.37	1.83	1.41
6	A	814	LCP	O1-CL	7.81	1.82	1.41
6	A	817	LCP	O1-CL	7.93	1.82	1.41
6	A	817	LCP	O2-CL	8.02	1.83	1.41
6	A	816	LCP	O3-CL	8.06	1.83	1.41
6	A	815	LCP	O2-CL	8.11	1.83	1.41
6	A	814	LCP	O3-CL	8.13	1.83	1.41
6	A	815	LCP	O3-CL	8.13	1.83	1.41
6	A	816	LCP	O1-CL	8.16	1.84	1.41
6	A	816	LCP	O2-CL	8.21	1.84	1.41
6	A	817	LCP	O3-CL	8.23	1.84	1.41
6	A	814	LCP	O2-CL	8.34	1.85	1.41
6	A	815	LCP	O1-CL	8.42	1.85	1.41



All (30) bond angle outliers are listed below:

Mol	Chain	Res	Type	Atoms	Z	Observed(°)	Ideal(°)
4	A	812	MGD	C6-C5-C4	-5.97	114.99	120.85
4	A	811	MGD	C6-C5-C4	-4.17	116.76	120.85
4	A	812	MGD	C5'-C4'-C3'	-4.17	99.60	115.29
4	A	811	MGD	C5-C6-N1	-4.05	117.71	123.47
4	A	812	MGD	N3-C2-N1	-3.91	121.68	127.41
4	A	812	MGD	O11-C23-C14	-3.66	106.53	108.96
4	A	812	MGD	O4'-C4'-C5'	-3.64	97.28	109.39
4	A	811	MGD	C4-C5-N7	-3.51	106.02	109.41
4	A	812	MGD	C21-N22-C23	-3.38	117.04	123.67
4	A	812	MGD	C5-C6-N1	-3.24	118.86	123.47
4	A	812	MGD	C4'-O4'-C1'	-2.89	106.81	109.83
4	A	812	MGD	N18-C19-N20	-2.64	121.23	125.43
4	A	811	MGD	N18-C19-N20	-2.18	121.97	125.43
4	A	811	MGD	C1'-N9-C4	-2.11	122.98	126.64
4	A	812	MGD	C1'-N9-C4	-2.10	123.00	126.64
4	A	812	MGD	N2-C2-N1	2.23	120.76	117.25
4	A	811	MGD	C17-C16-C21	2.27	116.62	114.56
4	A	812	MGD	O4'-C4'-C3'	2.29	109.67	105.15
4	A	812	MGD	C17-C16-C21	2.44	116.78	114.56
4	A	812	MGD	N22-C21-N20	2.98	122.67	116.90
4	A	811	MGD	N22-C21-N20	3.02	122.75	116.90
4	A	812	MGD	C19-N20-C21	3.06	121.37	114.50
4	A	812	MGD	N19-C19-N18	3.12	122.15	117.25
4	A	811	MGD	C19-N20-C21	3.26	121.82	114.50
4	A	811	MGD	C6-N1-C2	3.78	121.50	116.06
4	A	811	MGD	C2-N3-C4	4.03	119.87	115.16
4	A	811	MGD	C17-N18-C19	4.37	122.35	116.06
4	A	812	MGD	C6-N1-C2	4.60	122.68	116.06
4	A	812	MGD	C17-N18-C19	4.77	122.92	116.06
4	A	812	MGD	C2-N3-C4	4.87	120.84	115.16

There are no chirality outliers.

There are no torsion outliers.

There are no ring outliers.

5 monomers are involved in 18 short contacts:

Mol	Chain	Res	Type	Clashes	Symm-Clashes
4	A	811	MGD	6	0
4	A	812	MGD	6	0
6	A	814	LCP	3	0

*Continued on next page...*

*Continued from previous page...*

Mol	Chain	Res	Type	Clashes	Symm-Clashes
6	A	815	LCP	2	0
6	A	816	LCP	1	0

## 5.7 Other polymers [i](#)

There are no such residues in this entry.

## 5.8 Polymer linkage issues [i](#)

There are no chain breaks in this entry.

## 6 Fit of model and data ⓘ

### 6.1 Protein, DNA and RNA chains ⓘ

In the following table, the column labelled ‘#RSRZ> 2’ contains the number (and percentage) of RSRZ outliers, followed by percent RSRZ outliers for the chain as percentile scores relative to all X-ray entries and entries of similar resolution. The OWAB column contains the minimum, median, 95<sup>th</sup> percentile and maximum values of the occupancy-weighted average B-factor per residue. The column labelled ‘Q< 0.9’ lists the number of (and percentage) of residues with an average occupancy less than 0.9.

Mol	Chain	Analysed	<RSRZ>	#RSRZ>2		OWAB(Å <sup>2</sup> )	Q<0.9
1	A	721/723 (99%)	-0.01	23 (3%)	47 47	10, 18, 26, 51	0

All (23) RSRZ outliers are listed below:

Mol	Chain	Res	Type	RSRZ
1	A	3	ASN	4.6
1	A	654	GLY	4.1
1	A	652	ARG	4.0
1	A	4	ARG	3.5
1	A	651	ALA	3.3
1	A	306	TRP	3.0
1	A	473	CYS	2.8
1	A	575	ALA	2.8
1	A	28	ASP	2.7
1	A	653	THR	2.7
1	A	349	ALA	2.6
1	A	576	ASP	2.6
1	A	474	GLY	2.6
1	A	723	ALA	2.6
1	A	343	LEU	2.5
1	A	305	LEU	2.4
1	A	307	CYS	2.3
1	A	392	GLU	2.3
1	A	344	THR	2.2
1	A	257	GLU	2.2
1	A	557	ASP	2.2
1	A	341	PHE	2.1
1	A	173	ILE	2.1

## 6.2 Non-standard residues in protein, DNA, RNA chains [i](#)

There are no non-standard protein/DNA/RNA residues in this entry.

## 6.3 Carbohydrates [i](#)

There are no carbohydrates in this entry.

## 6.4 Ligands [i](#)

In the following table, the Atoms column lists the number of modelled atoms in the group and the number defined in the chemical component dictionary. The B-factors column lists the minimum, median, 95<sup>th</sup> percentile and maximum values of B factors of atoms in the group. The column labelled 'Q< 0.9' lists the number of atoms with occupancy less than 0.9.

Mol	Type	Chain	Res	Atoms	RSCC	RSR	B-factors( $\text{\AA}^2$ )	Q<0.9
6	LCP	A	815	5/5	0.79	0.22	39,41,41,41	5
6	LCP	A	816	5/5	0.84	0.37	27,28,28,31	5
6	LCP	A	817	5/5	0.90	0.31	33,35,36,36	5
5	UNX	A	813	1/1	0.93	0.74	16,16,16,16	0
4	MGD	A	811	47/47	0.96	0.09	8,13,20,21	0
4	MGD	A	812	47/47	0.97	0.11	9,11,14,16	0
6	LCP	A	814	5/5	0.97	0.16	18,21,23,25	5
2	SF4	A	800	8/8	0.98	0.06	14,16,17,18	0
3	MO	A	810	1/1	1.00	0.07	15,15,15,15	0

## 6.5 Other polymers [i](#)

There are no such residues in this entry.