



wwPDB X-ray Structure Validation Summary Report ⓘ

Mar 14, 2018 – 01:22 pm GMT

PDB ID : 2V3W
Title : Crystal structure of the benzoylformate decarboxylase variant L461A from *Pseudomonas putida*
Authors : Gocke, D.; Walter, L.; Gauchenova, K.; Kolter, G.; Knoll, M.; Berthold, C.L.; Schneider, G.; Pleiss, J.; Mueller, M.; Pohl, M.
Deposited on : 2007-06-25
Resolution : 2.20 Å(reported)

This is a wwPDB X-ray Structure Validation Summary Report for a publicly released PDB entry.

We welcome your comments at validation@mail.wwpdb.org

A user guide is available at

<https://www.wwpdb.org/validation/2017/XrayValidationReportHelp>

with specific help available everywhere you see the ⓘ symbol.

The following versions of software and data (see [references ⓘ](#)) were used in the production of this report:

MolProbity	:	4.02b-467
Mogul	:	1.7.3 (157068), CSD as539be (2018)
Xtriage (Phenix)	:	1.13
EDS	:	trunk31020
Percentile statistics	:	20171227.v01 (using entries in the PDB archive December 27th 2017)
Refmac	:	5.8.0158
CCP4	:	7.0 (Gargrove)
Ideal geometry (proteins)	:	Engh & Huber (2001)
Ideal geometry (DNA, RNA)	:	Parkinson et al. (1996)
Validation Pipeline (wwPDB-VP)	:	trunk31020

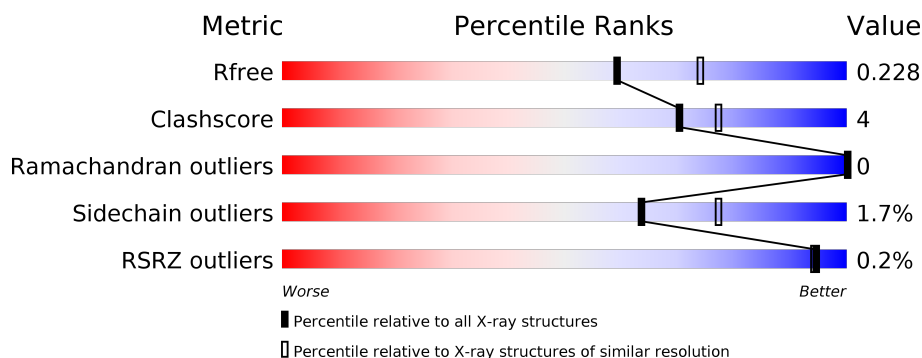
1 Overall quality at a glance

The following experimental techniques were used to determine the structure:

X-RAY DIFFRACTION

The reported resolution of this entry is 2.20 Å.

Percentile scores (ranging between 0-100) for global validation metrics of the entry are shown in the following graphic. The table shows the number of entries on which the scores are based.



Metric	Whole archive (#Entries)	Similar resolution (#Entries, resolution range(Å))
R_{free}	111664	4343 (2.20-2.20)
Clashscore	122126	5027 (2.20-2.20)
Ramachandran outliers	120053	4952 (2.20-2.20)
Sidechain outliers	120020	4953 (2.20-2.20)
RSRZ outliers	108989	4245 (2.20-2.20)

The table below summarises the geometric issues observed across the polymeric chains and their fit to the electron density. The red, orange, yellow and green segments on the lower bar indicate the fraction of residues that contain outliers for ≥ 3 , 2, 1 and 0 types of geometric quality criteria. A grey segment represents the fraction of residues that are not modelled. The numeric value for each fraction is indicated below the corresponding segment, with a dot representing fractions $\leq 5\%$. The upper red bar (where present) indicates the fraction of residues that have poor fit to the electron density. The numeric value is given above the bar.

Mol	Chain	Length	Quality of chain
1	A	528	<div> <div>91%</div> <div>9%</div> </div>
1	B	528	<div> <div>90%</div> <div>9%</div> <div>.</div> </div>
1	C	528	<div> <div>91%</div> <div>8%</div> </div>
1	D	528	<div> <div>90%</div> <div>9%</div> </div>

The following table lists non-polymeric compounds, carbohydrate monomers and non-standard residues in protein, DNA, RNA chains that are outliers for geometric or electron-density-fit crite-

ria:

Mol	Type	Chain	Res	Chirality	Geometry	Clashes	Electron density
3	SO4	C	1529	-	-	X	-

2 Entry composition

There are 5 unique types of molecules in this entry. The entry contains 16911 atoms, of which 0 are hydrogens and 0 are deuteriums.

In the tables below, the ZeroOcc column contains the number of atoms modelled with zero occupancy, the AltConf column contains the number of residues with at least one atom in alternate conformation and the Trace column contains the number of residues modelled with at most 2 atoms.

- Molecule 1 is a protein called BENZOYLFORMATE DECARBOXYLASE.

Mol	Chain	Residues	Atoms					ZeroOcc	AltConf	Trace
1	A	526	Total	C	N	O	S	0	2	0
			3956	2502	685	749	20			
1	B	526	Total	C	N	O	S	0	2	0
			3957	2503	686	748	20			
1	C	526	Total	C	N	O	S	0	2	0
			3956	2502	685	749	20			
1	D	526	Total	C	N	O	S	0	3	0
			3963	2507	687	749	20			

There are 4 discrepancies between the modelled and reference sequences:

Chain	Residue	Modelled	Actual	Comment	Reference
A	461	ALA	LEU	engineered mutation	UNP P20906
B	461	ALA	LEU	engineered mutation	UNP P20906
C	461	ALA	LEU	engineered mutation	UNP P20906
D	461	ALA	LEU	engineered mutation	UNP P20906

- Molecule 2 is MAGNESIUM ION (three-letter code: MG) (formula: Mg).

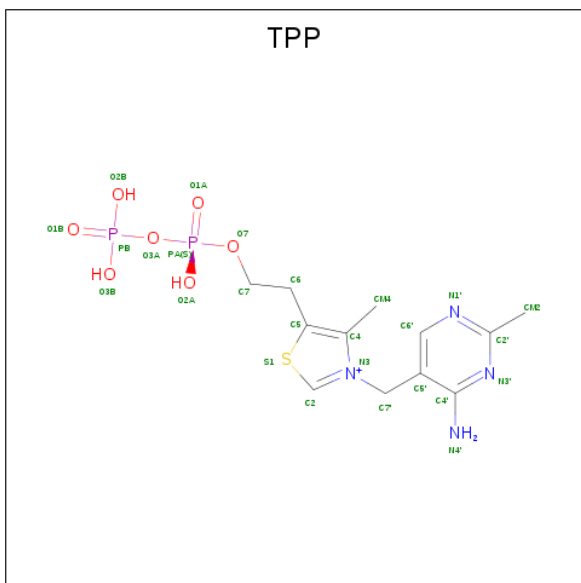
Mol	Chain	Residues	Atoms		ZeroOcc	AltConf
2	B	2	Total	Mg	0	0
			2	2		
2	A	2	Total	Mg	0	0
			2	2		
2	D	1	Total	Mg	0	0
			1	1		
2	C	1	Total	Mg	0	0
			1	1		

- Molecule 3 is SULFATE ION (three-letter code: SO4) (formula: O₄S).



Mol	Chain	Residues	Atoms			ZeroOcc	AltConf
3	A	1	Total	O	S	0	0
			5	4	1		
3	B	1	Total	O	S	0	0
			5	4	1		
3	C	1	Total	O	S	0	0
			5	4	1		
3	D	1	Total	O	S	0	0
			5	4	1		

- Molecule 4 is THIAMINE DIPHOSPHATE (three-letter code: TPP) (formula: $C_{12}H_{19}N_4O_7P_2S$).



Mol	Chain	Residues	Atoms						ZeroOcc	AltConf
4	A	1	Total 26	C 12	N 4	O 7	P 2	S 1	0	0
4	B	1	Total 26	C 12	N 4	O 7	P 2	S 1	0	0
4	C	1	Total 26	C 12	N 4	O 7	P 2	S 1	0	0
4	D	1	Total 26	C 12	N 4	O 7	P 2	S 1	0	0

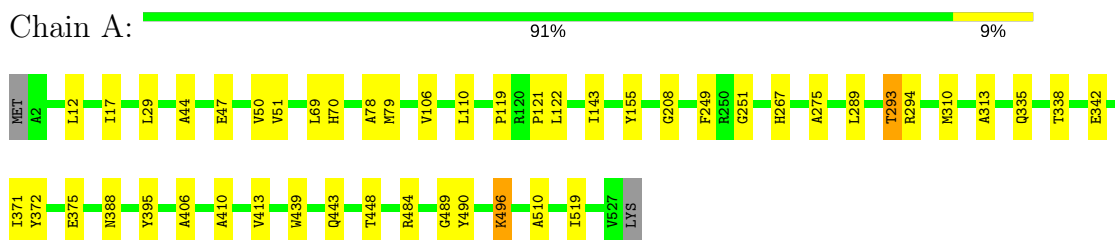
- Molecule 5 is water.

Mol	Chain	Residues	Atoms		ZeroOcc	AltConf
5	A	249	Total	O	0	0
			249	249		
5	B	240	Total	O	0	0
			240	240		
5	C	247	Total	O	0	0
			247	247		
5	D	213	Total	O	0	0
			213	213		

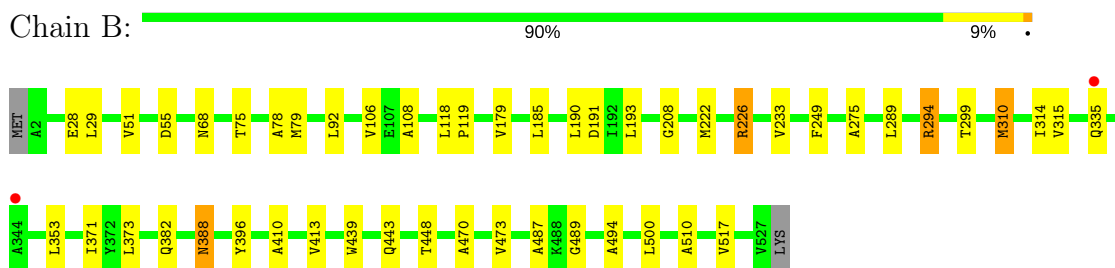
3 Residue-property plots [i](#)

These plots are drawn for all protein, RNA and DNA chains in the entry. The first graphic for a chain summarises the proportions of the various outlier classes displayed in the second graphic. The second graphic shows the sequence view annotated by issues in geometry and electron density. Residues are color-coded according to the number of geometric quality criteria for which they contain at least one outlier: green = 0, yellow = 1, orange = 2 and red = 3 or more. A red dot above a residue indicates a poor fit to the electron density ($RSRZ > 2$). Stretches of 2 or more consecutive residues without any outlier are shown as a green connector. Residues present in the sample, but not in the model, are shown in grey.

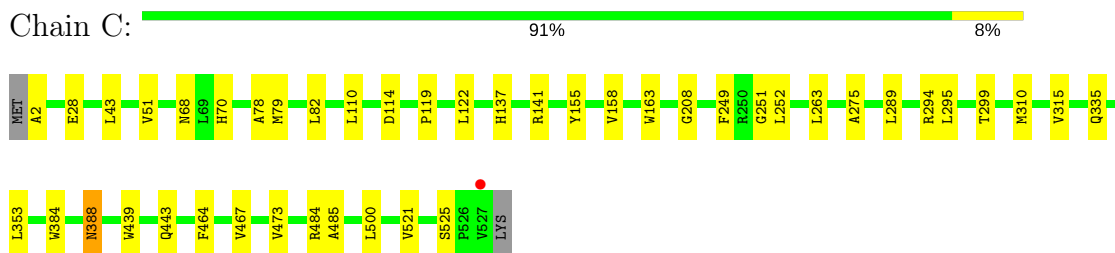
- Molecule 1: BENZOYLFORMATE DECARBOXYLASE



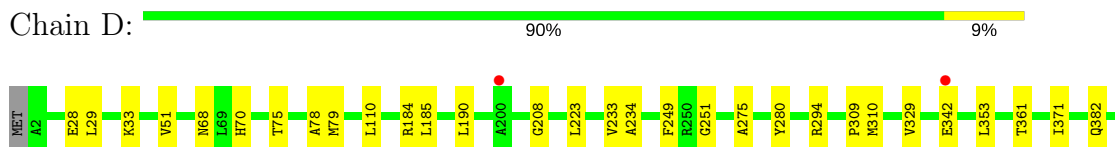
- Molecule 1: BENZOYLFORMATE DECARBOXYLASE



- Molecule 1: BENZOYLFORMATE DECARBOXYLASE



- Molecule 1: BENZOYLFORMATE DECARBOXYLASE



K388	K389	L407	P408	A409	V413	A437	L438	V439	Q443	V451	V463	F464	V467	V473	D482	F483	R484	K496	L507	V521	V527	LYS
------	------	------	------	------	------	------	------	------	------	------	------	------	------	------	------	------	------	------	------	------	------	-----

4 Data and refinement statistics

Property	Value	Source
Space group	P 21 21 21	Depositor
Cell constants a, b, c, α , β , γ	95.70Å 139.94Å 169.05Å 90.00° 90.00° 90.00°	Depositor
Resolution (Å)	35.00 – 2.20 79.00 – 2.20	Depositor EDS
% Data completeness (in resolution range)	96.5 (35.00-2.20) 86.7 (79.00-2.20)	Depositor EDS
R_{merge}	0.12	Depositor
R_{sym}	(Not available)	Depositor
$\langle I/\sigma(I) \rangle$ ¹	2.27 (at 2.20Å)	Xtriage
Refinement program	REFMAC 5.2.0019	Depositor
R, R_{free}	0.180 , 0.228 0.182 , 0.228	Depositor DCC
R_{free} test set	5050 reflections (5.04%)	wwPDB-VP
Wilson B-factor (Å ²)	26.1	Xtriage
Anisotropy	0.793	Xtriage
Bulk solvent k_{sol} (e/Å ³), B_{sol} (Å ²)	0.36 , 30.3	EDS
L-test for twinning ²	$\langle L \rangle = 0.49$, $\langle L^2 \rangle = 0.32$	Xtriage
Estimated twinning fraction	No twinning to report.	Xtriage
F_o, F_c correlation	0.95	EDS
Total number of atoms	16911	wwPDB-VP
Average B, all atoms (Å ²)	26.0	wwPDB-VP

Xtriage's analysis on translational NCS is as follows: *The largest off-origin peak in the Patterson function is 3.78% of the height of the origin peak. No significant pseudotranslation is detected.*

¹Intensities estimated from amplitudes.

²Theoretical values of $\langle |L| \rangle$, $\langle L^2 \rangle$ for acentric reflections are 0.5, 0.333 respectively for untwinned datasets, and 0.375, 0.2 for perfectly twinned datasets.

5 Model quality [i](#)

5.1 Standard geometry [i](#)

Bond lengths and bond angles in the following residue types are not validated in this section: MG, SO4, TPP

The Z score for a bond length (or angle) is the number of standard deviations the observed value is removed from the expected value. A bond length (or angle) with $|Z| > 5$ is considered an outlier worth inspection. RMSZ is the root-mean-square of all Z scores of the bond lengths (or angles).

Mol	Chain	Bond lengths		Bond angles	
		RMSZ	# $ Z > 5$	RMSZ	# $ Z > 5$
1	A	0.41	0/4058	0.55	0/5548
1	B	0.39	0/4060	0.55	0/5551
1	C	0.39	0/4058	0.55	0/5548
1	D	0.40	0/4069	0.55	0/5563
All	All	0.40	0/16245	0.55	0/22210

Chiral center outliers are detected by calculating the chiral volume of a chiral center and verifying if the center is modelled as a planar moiety or with the opposite hand. A planarity outlier is detected by checking planarity of atoms in a peptide group, atoms in a mainchain group or atoms of a sidechain that are expected to be planar.

Mol	Chain	#Chirality outliers	#Planarity outliers
1	A	1	0

There are no bond length outliers.

There are no bond angle outliers.

All (1) chirality outliers are listed below:

Mol	Chain	Res	Type	Atom
1	A	293	THR	CB

There are no planarity outliers.

5.2 Too-close contacts [i](#)

In the following table, the Non-H and H(model) columns list the number of non-hydrogen atoms and hydrogen atoms in the chain respectively. The H(added) column lists the number of hydrogen atoms added and optimized by MolProbity. The Clashes column lists the number of clashes within the asymmetric unit, whereas Symm-Clashes lists symmetry related clashes.

Mol	Chain	Non-H	H(model)	H(added)	Clashes	Symm-Clashes
1	A	3956	0	3890	34	0
1	B	3957	0	3889	37	0
1	C	3956	0	3890	33	0
1	D	3963	0	3897	34	0
2	A	2	0	0	0	0
2	B	2	0	0	0	0
2	C	1	0	0	0	0
2	D	1	0	0	0	0
3	A	5	0	0	1	0
3	B	5	0	0	0	0
3	C	5	0	0	2	0
3	D	5	0	0	1	0
4	A	26	0	16	0	0
4	B	26	0	16	0	0
4	C	26	0	16	0	0
4	D	26	0	16	0	0
5	A	249	0	0	1	0
5	B	240	0	0	2	0
5	C	247	0	0	2	0
5	D	213	0	0	2	0
All	All	16911	0	15630	124	0

The all-atom clashscore is defined as the number of clashes found per 1000 atoms (including hydrogen atoms). The all-atom clashscore for this structure is 4.

The worst 5 of 124 close contacts within the same asymmetric unit are listed below, sorted by their clash magnitude.

Atom-1	Atom-2	Interatomic distance (Å)	Clash overlap (Å)
1:D:75:THR:HG22	1:D:79[B]:MET:HE2	1.55	0.86
1:D:75:THR:HG22	1:D:79[B]:MET:CE	2.12	0.78
1:A:267:HIS:O	1:A:293:THR:HB	1.85	0.77
1:B:75:THR:HG22	1:B:79[B]:MET:CE	2.16	0.75
1:B:75:THR:HG22	1:B:79[B]:MET:HE2	1.67	0.74

There are no symmetry-related clashes.

5.3 Torsion angles

5.3.1 Protein backbone

In the following table, the Percentiles column shows the percent Ramachandran outliers of the chain as a percentile score with respect to all X-ray entries followed by that with respect to entries of similar resolution.

The Analysed column shows the number of residues for which the backbone conformation was analysed, and the total number of residues.

Mol	Chain	Analysed	Favoured	Allowed	Outliers	Percentiles	
1	A	526/528 (100%)	518 (98%)	8 (2%)	0	100	100
1	B	526/528 (100%)	517 (98%)	9 (2%)	0	100	100
1	C	526/528 (100%)	514 (98%)	12 (2%)	0	100	100
1	D	527/528 (100%)	519 (98%)	8 (2%)	0	100	100
All	All	2105/2112 (100%)	2068 (98%)	37 (2%)	0	100	100

There are no Ramachandran outliers to report.

5.3.2 Protein sidechains

In the following table, the Percentiles column shows the percent sidechain outliers of the chain as a percentile score with respect to all X-ray entries followed by that with respect to entries of similar resolution.

The Analysed column shows the number of residues for which the sidechain conformation was analysed, and the total number of residues.

Mol	Chain	Analysed	Rotameric	Outliers	Percentiles	
1	A	413/413 (100%)	405 (98%)	8 (2%)	60	74
1	B	413/413 (100%)	407 (98%)	6 (2%)	67	80
1	C	413/413 (100%)	407 (98%)	6 (2%)	67	80
1	D	414/413 (100%)	406 (98%)	8 (2%)	60	74
All	All	1653/1652 (100%)	1625 (98%)	28 (2%)	63	77

5 of 28 residues with a non-rotameric sidechain are listed below:

Mol	Chain	Res	Type
1	B	382	GLN
1	C	294	ARG
1	D	388	ASN

Continued on next page...

Continued from previous page...

Mol	Chain	Res	Type
1	B	388	ASN
1	C	263	LEU

Some sidechains can be flipped to improve hydrogen bonding and reduce clashes. 5 of 12 such sidechains are listed below:

Mol	Chain	Res	Type
1	B	388	ASN
1	B	443	GLN
1	C	508	GLN
1	B	68	ASN
1	C	388	ASN

5.3.3 RNA [i](#)

There are no RNA molecules in this entry.

5.4 Non-standard residues in protein, DNA, RNA chains [i](#)

There are no non-standard protein/DNA/RNA residues in this entry.

5.5 Carbohydrates [i](#)

There are no carbohydrates in this entry.

5.6 Ligand geometry [i](#)

Of 14 ligands modelled in this entry, 6 are monoatomic - leaving 8 for Mogul analysis.

In the following table, the Counts columns list the number of bonds (or angles) for which Mogul statistics could be retrieved, the number of bonds (or angles) that are observed in the model and the number of bonds (or angles) that are defined in the Chemical Component Dictionary. The Link column lists molecule types, if any, to which the group is linked. The Z score for a bond length (or angle) is the number of standard deviations the observed value is removed from the expected value. A bond length (or angle) with $|Z| > 2$ is considered an outlier worth inspection. RMSZ is the root-mean-square of all Z scores of the bond lengths (or angles).

Mol	Type	Chain	Res	Link	Bond lengths			Bond angles		
					Counts	RMSZ	$\# Z > 2$	Counts	RMSZ	$\# Z > 2$
3	SO4	A	1530	-	4,4,4	0.19	0	6,6,6	0.19	0

Mol	Type	Chain	Res	Link	Bond lengths			Bond angles		
					Counts	RMSZ	# Z > 2	Counts	RMSZ	# Z > 2
4	TPP	A	1531	2	21,27,27	1.52	4 (19%)	26,40,40	1.89	8 (30%)
3	SO4	B	1530	-	4,4,4	0.14	0	6,6,6	0.21	0
4	TPP	B	1531	2	21,27,27	1.51	5 (23%)	26,40,40	2.29	9 (34%)
3	SO4	C	1529	-	4,4,4	0.13	0	6,6,6	0.13	0
4	TPP	C	1530	2	21,27,27	1.46	5 (23%)	26,40,40	2.20	6 (23%)
3	SO4	D	1529	-	4,4,4	0.15	0	6,6,6	0.32	0
4	TPP	D	1530	2	21,27,27	1.55	4 (19%)	26,40,40	1.84	8 (30%)

In the following table, the Chirals column lists the number of chiral outliers, the number of chiral centers analysed, the number of these observed in the model and the number defined in the Chemical Component Dictionary. Similar counts are reported in the Torsion and Rings columns. '-' means no outliers of that kind were identified.

Mol	Type	Chain	Res	Link	Chirals	Torsions	Rings
3	SO4	A	1530	-	-	0/0/0/0	0/0/0/0
4	TPP	A	1531	2	-	0/16/17/17	0/2/2/2
3	SO4	B	1530	-	-	0/0/0/0	0/0/0/0
4	TPP	B	1531	2	-	0/16/17/17	0/2/2/2
3	SO4	C	1529	-	-	0/0/0/0	0/0/0/0
4	TPP	C	1530	2	-	0/16/17/17	0/2/2/2
3	SO4	D	1529	-	-	0/0/0/0	0/0/0/0
4	TPP	D	1530	2	-	0/16/17/17	0/2/2/2

The worst 5 of 18 bond length outliers are listed below:

Mol	Chain	Res	Type	Atoms	Z	Observed(Å)	Ideal(Å)
4	B	1531	TPP	C4-N3	-3.78	1.36	1.39
4	A	1531	TPP	C4-N3	-3.75	1.36	1.39
4	D	1530	TPP	C4-N3	-3.34	1.36	1.39
4	C	1530	TPP	C4-N3	-3.00	1.37	1.39
4	B	1531	TPP	C6'-N1'	2.02	1.38	1.34

The worst 5 of 31 bond angle outliers are listed below:

Mol	Chain	Res	Type	Atoms	Z	Observed(°)	Ideal(°)
4	B	1531	TPP	PA-O3A-PB	-3.80	119.85	132.63
4	B	1531	TPP	N1'-C2'-N3'	-3.80	118.86	125.55
4	C	1530	TPP	N1'-C2'-N3'	-3.45	119.47	125.55
4	D	1530	TPP	PA-O3A-PB	-2.93	122.78	132.63
4	A	1531	TPP	N1'-C2'-N3'	-2.85	120.52	125.55

There are no chirality outliers.

There are no torsion outliers.

There are no ring outliers.

3 monomers are involved in 4 short contacts:

Mol	Chain	Res	Type	Clashes	Symm-Clashes
3	A	1530	SO4	1	0
3	C	1529	SO4	2	0
3	D	1529	SO4	1	0

5.7 Other polymers [i](#)

There are no such residues in this entry.

5.8 Polymer linkage issues [i](#)

There are no chain breaks in this entry.

6 Fit of model and data [i](#)

6.1 Protein, DNA and RNA chains [i](#)

In the following table, the column labelled ‘#RSRZ> 2’ contains the number (and percentage) of RSRZ outliers, followed by percent RSRZ outliers for the chain as percentile scores relative to all X-ray entries and entries of similar resolution. The OWAB column contains the minimum, median, 95th percentile and maximum values of the occupancy-weighted average B-factor per residue. The column labelled ‘Q< 0.9’ lists the number of (and percentage) of residues with an average occupancy less than 0.9.

Mol	Chain	Analysed	<RSRZ>	#RSRZ>2	OWAB(Å ²)	Q<0.9
1	A	526/528 (99%)	-0.48	0 100 100	15, 23, 35, 45	0
1	B	526/528 (99%)	-0.27	2 (0%) 92 91	15, 25, 41, 53	0
1	C	526/528 (99%)	-0.49	1 (0%) 94 94	18, 25, 36, 47	0
1	D	526/528 (99%)	-0.21	2 (0%) 92 91	17, 27, 42, 54	0
All	All	2104/2112 (99%)	-0.36	5 (0%) 94 94	15, 25, 39, 54	0

All (5) RSRZ outliers are listed below:

Mol	Chain	Res	Type	RSRZ
1	C	527	VAL	2.4
1	B	335	GLN	2.3
1	B	344	ALA	2.1
1	D	200	ALA	2.1
1	D	342	GLU	2.0

6.2 Non-standard residues in protein, DNA, RNA chains [i](#)

There are no non-standard protein/DNA/RNA residues in this entry.

6.3 Carbohydrates [i](#)

There are no carbohydrates in this entry.

6.4 Ligands [i](#)

In the following table, the Atoms column lists the number of modelled atoms in the group and the number defined in the chemical component dictionary. The B-factors column lists the minimum,

median, 95th percentile and maximum values of B factors of atoms in the group. The column labelled 'Q< 0.9' lists the number of atoms with occupancy less than 0.9.

Mol	Type	Chain	Res	Atoms	RSCC	RSR	B-factors(\AA^2)	Q<0.9
2	MG	B	1528	1/1	0.97	0.05	23,23,23,23	0
4	TPP	C	1530	26/26	0.97	0.10	19,24,27,27	0
2	MG	D	1528	1/1	0.98	0.06	19,19,19,19	0
2	MG	C	1528	1/1	0.98	0.06	20,20,20,20	0
2	MG	B	1529	1/1	0.98	0.07	20,20,20,20	0
4	TPP	D	1530	26/26	0.98	0.11	22,26,29,30	0
4	TPP	B	1531	26/26	0.98	0.09	20,24,26,28	0
4	TPP	A	1531	26/26	0.98	0.11	20,24,27,27	0
3	SO4	B	1530	5/5	0.99	0.08	36,36,38,39	0
2	MG	A	1528	1/1	0.99	0.04	18,18,18,18	0
2	MG	A	1529	1/1	0.99	0.10	17,17,17,17	0
3	SO4	D	1529	5/5	0.99	0.07	31,31,33,33	0
3	SO4	A	1530	5/5	0.99	0.08	25,26,27,27	0
3	SO4	C	1529	5/5	0.99	0.09	30,32,32,32	0

6.5 Other polymers

There are no such residues in this entry.