



Full wwPDB X-ray Structure Validation Report ⓘ

Mar 8, 2018 – 10:11 pm GMT

PDB ID : 3V8W
Title : Crystal Structure of Interleukin-2 Inducible T-cell Kinase Itk Catalytic Domain with Thienopyrazolylindole Inhibitor 469
Authors : McLean, L.R.; Zhang, Y.
Deposited on : 2011-12-23
Resolution : 2.27 Å(reported)

This is a Full wwPDB X-ray Structure Validation Report for a publicly released PDB entry.

We welcome your comments at validation@mail.wwpdb.org

A user guide is available at

<https://www.wwpdb.org/validation/2017/XrayValidationReportHelp>

with specific help available everywhere you see the ⓘ symbol.

The following versions of software and data (see [references ⓘ](#)) were used in the production of this report:

MolProbity : 4.02b-467
Mogul : 1.7.3 (157068), CSD as539be (2018)
Xtriage (Phenix) : 1.13
EDS : trunk30967
Percentile statistics : 20171227.v01 (using entries in the PDB archive December 27th 2017)
Refmac : 5.8.0158
CCP4 : 7.0 (Gargrove)
Ideal geometry (proteins) : Engh & Huber (2001)
Ideal geometry (DNA, RNA) : Parkinson et al. (1996)
Validation Pipeline (wwPDB-VP) : trunk30967

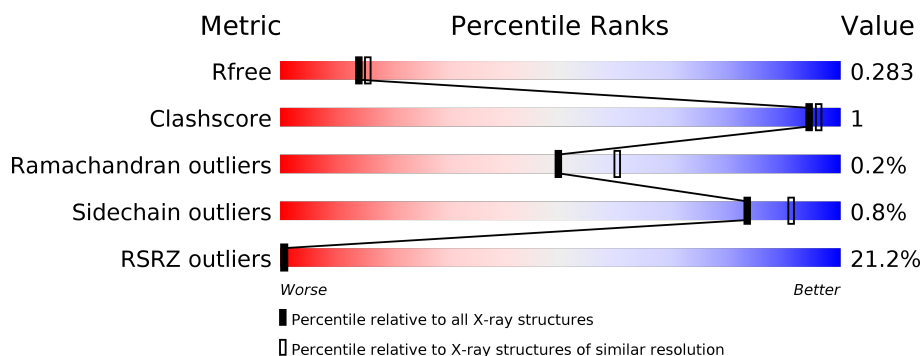
1 Overall quality at a glance

The following experimental techniques were used to determine the structure:

X-RAY DIFFRACTION

The reported resolution of this entry is 2.27 Å.

Percentile scores (ranging between 0-100) for global validation metrics of the entry are shown in the following graphic. The table shows the number of entries on which the scores are based.



Metric	Whole archive (#Entries)	Similar resolution (#Entries, resolution range(Å))
R_{free}	111664	6121 (2.30-2.26)
Clashscore	122126	6842 (2.30-2.26)
Ramachandran outliers	120053	6755 (2.30-2.26)
Sidechain outliers	120020	6755 (2.30-2.26)
RSRZ outliers	108989	5992 (2.30-2.26)

The table below summarises the geometric issues observed across the polymeric chains and their fit to the electron density. The red, orange, yellow and green segments on the lower bar indicate the fraction of residues that contain outliers for ≥ 3 , 2, 1 and 0 types of geometric quality criteria. A grey segment represents the fraction of residues that are not modelled. The numeric value for each fraction is indicated below the corresponding segment, with a dot representing fractions $\leq 5\%$. The upper red bar (where present) indicates the fraction of residues that have poor fit to the electron density. The numeric value is given above the bar.

Mol	Chain	Length	Quality of chain
1	A	266	
1	B	266	

In the tables below, the ZeroOcc column contains the number of atoms modelled with zero occupancy, the AltConf column contains the number of residues with at least one atom in alternate conformation and the Trace column contains the number of residues modelled with at most 2 atoms.

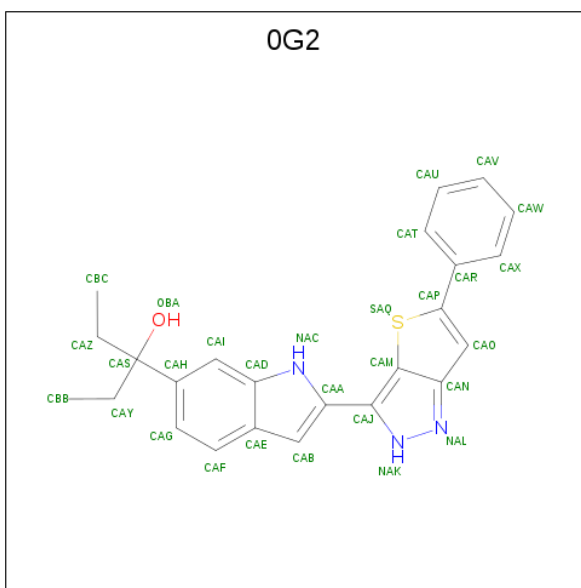
- Molecule 1 is a protein called Tyrosine-protein kinase ITK/TSK.

Mol	Chain	Residues	Atoms					ZeroOcc	AltConf	Trace
1	A	243	Total 1841	C 1179	N 311	O 336	S 15	0	0	0
1	B	242	Total 1839	C 1181	N 307	O 336	S 15	0	0	0

There are 4 discrepancies between the modelled and reference sequences:

Chain	Residue	Modelled	Actual	Comment	Reference
A	355	GLY	-	EXPRESSION TAG	UNP Q08881
A	356	SER	-	EXPRESSION TAG	UNP Q08881
B	355	GLY	-	EXPRESSION TAG	UNP Q08881
B	356	SER	-	EXPRESSION TAG	UNP Q08881

- Molecule 2 is 3-[2-(5-phenyl-2H-thieno[3,2-c]pyrazol-3-yl)-1H-indol-6-yl]pentan-3-ol (three-letter code: 0G2) (formula: $C_{24}H_{23}N_3OS$).



Mol	Chain	Residues	Atoms					ZeroOcc	AltConf
2	A	1	Total	C	N	O	S	0	0
			29	24	3	1	1		
2	B	1	Total	C	N	O	S	0	0
			29	24	3	1	1		

- Molecule 3 is SULFATE ION (three-letter code: SO4) (formula: O₄S).



Mol	Chain	Residues	Atoms			ZeroOcc	AltConf
3	B	1	Total	O	S	0	0
			5	4	1		

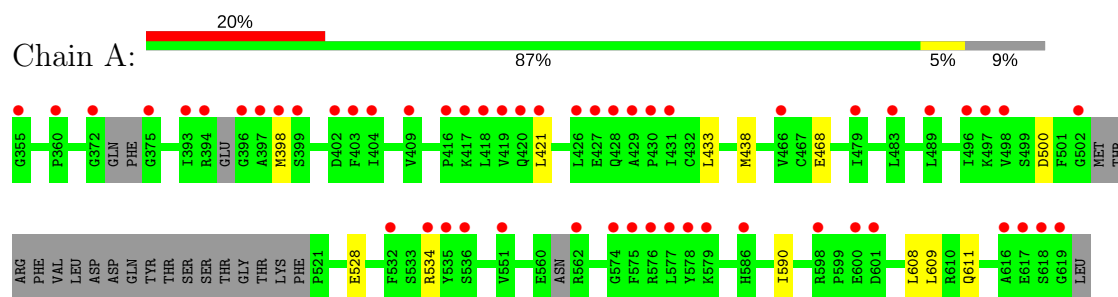
- Molecule 4 is water.

Mol	Chain	Residues	Atoms		ZeroOcc	AltConf
4	A	22	Total	O	0	0
			22	22		
4	B	27	Total	O	0	0
			27	27		

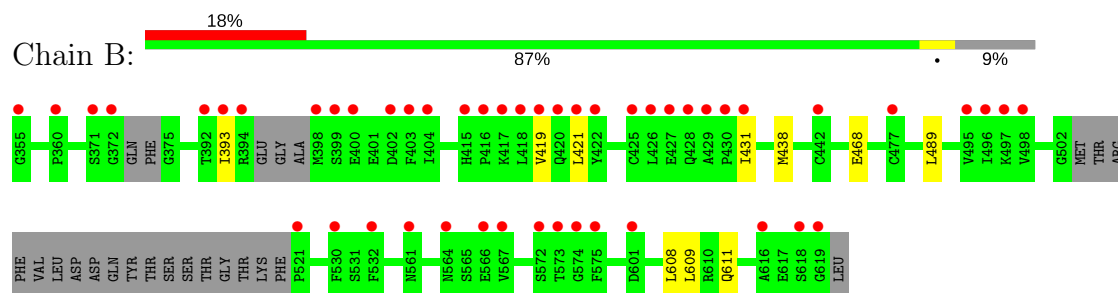
3 Residue-property plots [i](#)

These plots are drawn for all protein, RNA and DNA chains in the entry. The first graphic for a chain summarises the proportions of the various outlier classes displayed in the second graphic. The second graphic shows the sequence view annotated by issues in geometry and electron density. Residues are color-coded according to the number of geometric quality criteria for which they contain at least one outlier: green = 0, yellow = 1, orange = 2 and red = 3 or more. A red dot above a residue indicates a poor fit to the electron density ($RSRZ > 2$). Stretches of 2 or more consecutive residues without any outlier are shown as a green connector. Residues present in the sample, but not in the model, are shown in grey.

• Molecule 1: Tyrosine-protein kinase ITK/TSK



• Molecule 1: Tyrosine-protein kinase ITK/TSK



4 Data and refinement statistics

Property	Value	Source
Space group	C 1 2 1	Depositor
Cell constants a, b, c, α , β , γ	146.08Å 69.29Å 68.58Å 90.00° 108.04° 90.00°	Depositor
Resolution (Å)	38.50 – 2.27 38.50 – 2.27	Depositor EDS
% Data completeness (in resolution range)	99.7 (38.50-2.27) 99.7 (38.50-2.27)	Depositor EDS
R_{merge}	0.18	Depositor
R_{sym}	(Not available)	Depositor
$\langle I/\sigma(I) \rangle$ ¹	1.12 (at 2.27Å)	Xtriage
Refinement program	BUSTER-TNT BUSTER 2.9.1, BUSTER 2.9.1	Depositor
R, R_{free}	0.251 , 0.268 0.271 , 0.283	Depositor DCC
R_{free} test set	1521 reflections (5.04%)	wwPDB-VP
Wilson B-factor (Å ²)	45.7	Xtriage
Anisotropy	0.297	Xtriage
Bulk solvent k_{sol} (e/Å ³), B_{sol} (Å ²)	0.36 , 38.6	EDS
L-test for twinning ²	$\langle L \rangle = 0.48$, $\langle L^2 \rangle = 0.31$	Xtriage
Estimated twinning fraction	No twinning to report.	Xtriage
F_o, F_c correlation	0.92	EDS
Total number of atoms	3792	wwPDB-VP
Average B, all atoms (Å ²)	52.0	wwPDB-VP

Xtriage's analysis on translational NCS is as follows: *The largest off-origin peak in the Patterson function is 5.95% of the height of the origin peak. No significant pseudotranslation is detected.*

¹Intensities estimated from amplitudes.

²Theoretical values of $\langle |L| \rangle$, $\langle L^2 \rangle$ for acentric reflections are 0.5, 0.333 respectively for untwinned datasets, and 0.375, 0.2 for perfectly twinned datasets.

5 Model quality

5.1 Standard geometry

Bond lengths and bond angles in the following residue types are not validated in this section: 0G2, SO4

The Z score for a bond length (or angle) is the number of standard deviations the observed value is removed from the expected value. A bond length (or angle) with $|Z| > 5$ is considered an outlier worth inspection. RMSZ is the root-mean-square of all Z scores of the bond lengths (or angles).

Mol	Chain	Bond lengths		Bond angles	
		RMSZ	# Z >5	RMSZ	# Z >5
1	A	0.38	0/1879	0.56	0/2542
1	B	0.38	0/1879	0.55	0/2546
All	All	0.38	0/3758	0.56	0/5088

There are no bond length outliers.

There are no bond angle outliers.

There are no chirality outliers.

There are no planarity outliers.

5.2 Too-close contacts

In the following table, the Non-H and H(model) columns list the number of non-hydrogen atoms and hydrogen atoms in the chain respectively. The H(added) column lists the number of hydrogen atoms added and optimized by MolProbity. The Clashes column lists the number of clashes within the asymmetric unit, whereas Symm-Clashes lists symmetry related clashes.

Mol	Chain	Non-H	H(model)	H(added)	Clashes	Symm-Clashes
1	A	1841	0	1739	5	0
1	B	1839	0	1754	5	0
2	A	29	0	23	1	0
2	B	29	0	23	1	0
3	B	5	0	0	0	0
4	A	22	0	0	0	0
4	B	27	0	0	0	0
All	All	3792	0	3539	10	0

The all-atom clashscore is defined as the number of clashes found per 1000 atoms (including hydrogen atoms). The all-atom clashscore for this structure is 1.

All (10) close contacts within the same asymmetric unit are listed below, sorted by their clash magnitude.

Atom-1	Atom-2	Interatomic distance (Å)	Clash overlap (Å)
1:B:438:MET:H	2:B:702:OG2:H17	1.43	0.67
1:B:393:ILE:HG12	1:B:431:ILE:HG13	1.78	0.65
1:A:438:MET:H	2:A:701:OG2:H17	1.48	0.59
1:A:468:GLU:HG3	1:A:609:LEU:HD11	1.91	0.53
1:B:468:GLU:HG3	1:B:609:LEU:HD11	1.96	0.47
1:B:419:VAL:HG21	1:B:489:LEU:HD12	1.96	0.46
1:A:528:GLU:HB3	1:A:534:ARG:HB2	2.01	0.43
1:A:421:LEU:HD11	1:A:433:LEU:HB3	2.01	0.42
1:B:608:LEU:HA	1:B:611:GLN:HE21	1.84	0.41
1:A:608:LEU:HA	1:A:611:GLN:HE21	1.85	0.41

There are no symmetry-related clashes.

5.3 Torsion angles [i](#)

5.3.1 Protein backbone [i](#)

In the following table, the Percentiles column shows the percent Ramachandran outliers of the chain as a percentile score with respect to all X-ray entries followed by that with respect to entries of similar resolution.

The Analysed column shows the number of residues for which the backbone conformation was analysed, and the total number of residues.

Mol	Chain	Analysed	Favoured	Allowed	Outliers	Percentiles	
1	A	233/266 (88%)	226 (97%)	6 (3%)	1 (0%)	36	43
1	B	234/266 (88%)	228 (97%)	6 (3%)	0	100	100
All	All	467/532 (88%)	454 (97%)	12 (3%)	1 (0%)	49	60

All (1) Ramachandran outliers are listed below:

Mol	Chain	Res	Type
1	A	398	MET

5.3.2 Protein sidechains [i](#)

In the following table, the Percentiles column shows the percent sidechain outliers of the chain as a percentile score with respect to all X-ray entries followed by that with respect to entries of similar

resolution.

The Analysed column shows the number of residues for which the sidechain conformation was analysed, and the total number of residues.

Mol	Chain	Analysed	Rotameric	Outliers	Percentiles	
1	A	185/233 (79%)	183 (99%)	2 (1%)	76	86
1	B	190/233 (82%)	189 (100%)	1 (0%)	90	95
All	All	375/466 (80%)	372 (99%)	3 (1%)	83	91

All (3) residues with a non-rotameric sidechain are listed below:

Mol	Chain	Res	Type
1	A	500	ASP
1	A	590	ILE
1	B	421	LEU

Some sidechains can be flipped to improve hydrogen bonding and reduce clashes. All (3) such sidechains are listed below:

Mol	Chain	Res	Type
1	A	592	ASN
1	A	611	GLN
1	B	611	GLN

5.3.3 RNA ⓘ

There are no RNA molecules in this entry.

5.4 Non-standard residues in protein, DNA, RNA chains ⓘ

There are no non-standard protein/DNA/RNA residues in this entry.

5.5 Carbohydrates ⓘ

There are no carbohydrates in this entry.

5.6 Ligand geometry ⓘ

3 ligands are modelled in this entry.

In the following table, the Counts columns list the number of bonds (or angles) for which Mogul statistics could be retrieved, the number of bonds (or angles) that are observed in the model and the number of bonds (or angles) that are defined in the Chemical Component Dictionary. The Link column lists molecule types, if any, to which the group is linked. The Z score for a bond length (or angle) is the number of standard deviations the observed value is removed from the expected value. A bond length (or angle) with $|Z| > 2$ is considered an outlier worth inspection. RMSZ is the root-mean-square of all Z scores of the bond lengths (or angles).

Mol	Type	Chain	Res	Link	Bond lengths			Bond angles		
					Counts	RMSZ	$\# Z > 2$	Counts	RMSZ	$\# Z > 2$
2	OG2	A	701	-	25,33,33	2.88	5 (20%)	27,49,49	1.12	2 (7%)
3	SO4	B	701	-	4,4,4	0.22	0	6,6,6	0.05	0
2	OG2	B	702	-	25,33,33	2.88	6 (24%)	27,49,49	1.15	3 (11%)

In the following table, the Chirals column lists the number of chiral outliers, the number of chiral centers analysed, the number of these observed in the model and the number defined in the Chemical Component Dictionary. Similar counts are reported in the Torsion and Rings columns. '-' means no outliers of that kind were identified.

Mol	Type	Chain	Res	Link	Chirals	Torsions	Rings
2	OG2	A	701	-	-	0/16/20/20	0/5/5/5
3	SO4	B	701	-	-	0/0/0/0	0/0/0/0
2	OG2	B	702	-	-	0/16/20/20	0/5/5/5

All (11) bond length outliers are listed below:

Mol	Chain	Res	Type	Atoms	Z	Observed(Å)	Ideal(Å)
2	A	701	OG2	CAJ-CAA	-10.51	1.40	1.50
2	B	702	OG2	CAJ-CAA	-10.42	1.40	1.50
2	A	701	OG2	NAL-NAK	-7.39	1.24	1.37
2	B	702	OG2	NAL-NAK	-7.32	1.24	1.37
2	B	702	OG2	CAB-CAA	-3.30	1.33	1.39
2	A	701	OG2	CAB-CAA	-3.29	1.34	1.39
2	B	702	OG2	CAP-SAQ	-2.77	1.68	1.72
2	A	701	OG2	CAP-SAQ	-2.44	1.69	1.72
2	B	702	OG2	CAB-CAE	-2.18	1.33	1.41
2	A	701	OG2	CAB-CAE	-2.16	1.33	1.41
2	B	702	OG2	CAS-CAH	2.23	1.55	1.53

All (5) bond angle outliers are listed below:

Mol	Chain	Res	Type	Atoms	Z	Observed(°)	Ideal(°)
2	B	702	OG2	CAN-CAM-SAQ	-3.96	107.13	112.00
2	A	701	OG2	CAN-CAM-SAQ	-3.85	107.26	112.00

Continued on next page...

Continued from previous page...

Mol	Chain	Res	Type	Atoms	Z	Observed(°)	Ideal(°)
2	B	702	0G2	CAB-CAA-CAJ	-2.14	126.19	129.32
2	A	701	0G2	CAA-NAC-CAD	2.07	108.75	104.47
2	B	702	0G2	CAA-NAC-CAD	2.08	108.75	104.47

There are no chirality outliers.

There are no torsion outliers.

There are no ring outliers.

2 monomers are involved in 2 short contacts:

Mol	Chain	Res	Type	Clashes	Symm-Clashes
2	A	701	0G2	1	0
2	B	702	0G2	1	0

5.7 Other polymers [i](#)

There are no such residues in this entry.

5.8 Polymer linkage issues [i](#)

There are no chain breaks in this entry.

6 Fit of model and data

6.1 Protein, DNA and RNA chains

In the following table, the column labelled ‘#RSRZ > 2’ contains the number (and percentage) of RSRZ outliers, followed by percent RSRZ outliers for the chain as percentile scores relative to all X-ray entries and entries of similar resolution. The OWAB column contains the minimum, median, 95th percentile and maximum values of the occupancy-weighted average B-factor per residue. The column labelled ‘Q < 0.9’ lists the number of (and percentage) of residues with an average occupancy less than 0.9.

Mol	Chain	Analysed	<RSRZ>	#RSRZ>2	OWAB(Å ²)	Q<0.9
1	A	243/266 (91%)	1.25	54 (22%) 0 1	36, 52, 77, 88	0
1	B	242/266 (90%)	1.18	49 (20%) 1 1	35, 51, 74, 92	0
All	All	485/532 (91%)	1.21	103 (21%) 1 1	35, 52, 76, 92	0

All (103) RSRZ outliers are listed below:

Mol	Chain	Res	Type	RSRZ
1	B	429	ALA	8.6
1	A	393	ILE	6.4
1	A	397	ALA	6.3
1	A	398	MET	5.7
1	B	426	LEU	5.1
1	B	572	SER	5.1
1	A	532	PHE	4.9
1	B	402	ASP	4.8
1	A	396	GLY	4.7
1	B	427	GLU	4.5
1	B	393	ILE	4.4
1	B	400	GLU	4.4
1	A	426	LEU	4.2
1	B	618	SER	4.1
1	B	575	PHE	4.0
1	B	355	GLY	4.0
1	B	573	THR	4.0
1	B	431	ILE	3.8
1	B	619	GLY	3.7
1	B	430	PRO	3.7
1	A	403	PHE	3.6
1	A	575	PHE	3.6
1	B	418	LEU	3.6
1	A	421	LEU	3.6

Continued on next page...

Continued from previous page...

Mol	Chain	Res	Type	RSRZ
1	A	574	GLY	3.5
1	B	601	ASP	3.5
1	A	418	LEU	3.5
1	B	371	SER	3.5
1	A	416	PRO	3.4
1	A	502	GLY	3.4
1	B	398	MET	3.4
1	B	497	LYS	3.4
1	A	497	LYS	3.4
1	A	534	ARG	3.3
1	B	495	VAL	3.3
1	A	428	GLN	3.3
1	A	427	GLU	3.2
1	A	404	ILE	3.2
1	B	419	VAL	3.2
1	B	498	VAL	3.2
1	B	428	GLN	3.1
1	A	498	VAL	3.1
1	B	421	LEU	3.1
1	A	431	ILE	3.0
1	A	399	SER	3.0
1	A	479	ILE	3.0
1	A	618	SER	3.0
1	B	561	ASN	2.9
1	A	586	HIS	2.9
1	B	415	HIS	2.9
1	A	576	ARG	2.8
1	A	355	GLY	2.8
1	B	403	PHE	2.7
1	B	420	GLN	2.7
1	A	535	TYR	2.7
1	A	616	ALA	2.7
1	B	399	SER	2.7
1	A	429	ALA	2.7
1	A	577	LEU	2.7
1	A	430	PRO	2.7
1	B	530	PHE	2.6
1	B	574	GLY	2.6
1	B	496	ILE	2.6
1	B	532	PHE	2.5
1	A	360	PRO	2.5
1	A	578	TYR	2.5

Continued on next page...

Continued from previous page...

Mol	Chain	Res	Type	RSRZ
1	B	394	ARG	2.4
1	B	404	ILE	2.4
1	A	551	VAL	2.4
1	A	466	VAL	2.4
1	A	601	ASP	2.4
1	B	564	ASN	2.4
1	A	402	ASP	2.3
1	A	417	LYS	2.3
1	A	409	VAL	2.3
1	B	417	LYS	2.3
1	B	616	ALA	2.3
1	B	425	CYS	2.3
1	B	372	GLY	2.3
1	A	419	VAL	2.3
1	B	521	PRO	2.3
1	A	420	GLN	2.3
1	A	598	ARG	2.2
1	B	567	VAL	2.2
1	A	562	ARG	2.2
1	A	579	LYS	2.2
1	B	422	TYR	2.2
1	A	375	GLY	2.1
1	B	360	PRO	2.1
1	A	394	ARG	2.1
1	A	617	GLU	2.1
1	A	496	ILE	2.1
1	A	619	GLY	2.1
1	B	477	CYS	2.1
1	B	566	GLU	2.1
1	A	536	SER	2.1
1	A	372	GLY	2.1
1	B	416	PRO	2.1
1	B	392	THR	2.0
1	A	600	GLU	2.0
1	A	489	LEU	2.0
1	B	442	CYS	2.0
1	A	483	LEU	2.0

6.2 Non-standard residues in protein, DNA, RNA chains ⓘ

There are no non-standard protein/DNA/RNA residues in this entry.

6.3 Carbohydrates [i](#)

There are no carbohydrates in this entry.

6.4 Ligands [i](#)

In the following table, the Atoms column lists the number of modelled atoms in the group and the number defined in the chemical component dictionary. The B-factors column lists the minimum, median, 95th percentile and maximum values of B factors of atoms in the group. The column labelled 'Q< 0.9' lists the number of atoms with occupancy less than 0.9.

Mol	Type	Chain	Res	Atoms	RSCC	RSR	B-factors(\AA^2)	Q<0.9
2	OG2	A	701	29/29	0.95	0.16	25,39,75,121	0
3	SO4	B	701	5/5	0.96	0.13	52,56,57,57	0
2	OG2	B	702	29/29	0.97	0.16	24,41,71,80	0

6.5 Other polymers [i](#)

There are no such residues in this entry.