



Full wwPDB X-ray Structure Validation Report ⓘ

Mar 13, 2018 – 01:57 pm GMT

PDB ID : 3VBI
Title : Crystal Structure of AntD, an N-acyltransferase from *Bacillus cereus* in complex with dTDP-4-amino-4,6-dideoxyglucose and Coenzyme A
Authors : Kubiak, R.L.; Holden, H.M.
Deposited on : 2012-01-02
Resolution : 1.80 Å(reported)

This is a Full wwPDB X-ray Structure Validation Report for a publicly released PDB entry.

We welcome your comments at validation@mail.wwpdb.org

A user guide is available at

<https://www.wwpdb.org/validation/2017/XrayValidationReportHelp>

with specific help available everywhere you see the ⓘ symbol.

The following versions of software and data (see [references ⓘ](#)) were used in the production of this report:

MolProbity : 4.02b-467
Mogul : 1.7.3 (157068), CSD as539be (2018)
Xtriage (Phenix) : 1.13
EDS : trunk31020
Percentile statistics : 20171227.v01 (using entries in the PDB archive December 27th 2017)
Refmac : 5.8.0158
CCP4 : 7.0 (Gargrove)
Ideal geometry (proteins) : Engh & Huber (2001)
Ideal geometry (DNA, RNA) : Parkinson et al. (1996)
Validation Pipeline (wwPDB-VP) : trunk31020

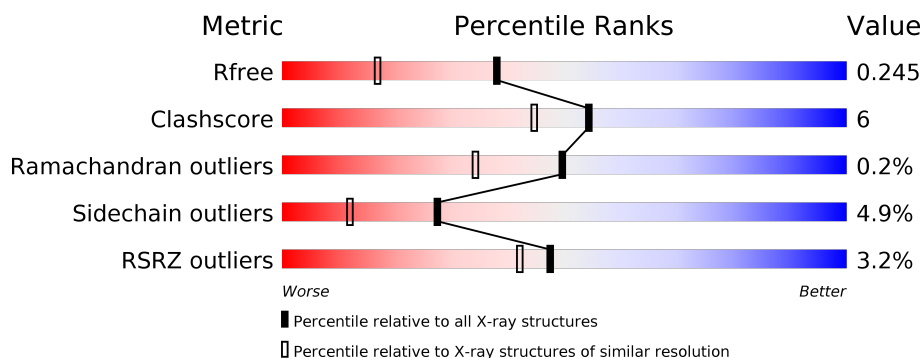
1 Overall quality at a glance

The following experimental techniques were used to determine the structure:

X-RAY DIFFRACTION

The reported resolution of this entry is 1.80 Å.

Percentile scores (ranging between 0-100) for global validation metrics of the entry are shown in the following graphic. The table shows the number of entries on which the scores are based.



Metric	Whole archive (#Entries)	Similar resolution (#Entries, resolution range(Å))
R_{free}	111664	5253 (1.80-1.80)
Clashscore	122126	6077 (1.80-1.80)
Ramachandran outliers	120053	6011 (1.80-1.80)
Sidechain outliers	120020	6010 (1.80-1.80)
RSRZ outliers	108989	5157 (1.80-1.80)

The table below summarises the geometric issues observed across the polymeric chains and their fit to the electron density. The red, orange, yellow and green segments on the lower bar indicate the fraction of residues that contain outliers for ≥ 3 , 2, 1 and 0 types of geometric quality criteria. A grey segment represents the fraction of residues that are not modelled. The numeric value for each fraction is indicated below the corresponding segment, with a dot representing fractions $\leq 5\%$. The upper red bar (where present) indicates the fraction of residues that have poor fit to the electron density. The numeric value is given above the bar.

Mol	Chain	Length	Quality of chain
1	A	205	<div> <div>2%</div> <div> <div></div> <div>75%</div> <div>13%</div> <div>•</div> <div>9%</div> </div> </div>
1	C	205	<div> <div>3%</div> <div> <div></div> <div>79%</div> <div>10%</div> <div>•</div> <div>9%</div> </div> </div>
1	E	205	<div> <div>4%</div> <div> <div></div> <div>80%</div> <div>11%</div> <div></div> <div>9%</div> </div> </div>

The following table lists non-polymeric compounds, carbohydrate monomers and non-standard residues in protein, DNA, RNA chains that are outliers for geometric or electron-density-fit criteria:

Mol	Type	Chain	Res	Chirality	Geometry	Clashes	Electron density
4	BCT	C	453	-	-	X	-
4	BCT	E	453	-	-	X	-

2 Entry composition

There are 6 unique types of molecules in this entry. The entry contains 4900 atoms, of which 0 are hydrogens and 0 are deuteriums.

In the tables below, the ZeroOcc column contains the number of atoms modelled with zero occupancy, the AltConf column contains the number of residues with at least one atom in alternate conformation and the Trace column contains the number of residues modelled with at most 2 atoms.

- Molecule 1 is a protein called Galactoside O-acetyltransferase.

Mol	Chain	Residues	Atoms					ZeroOcc	AltConf	Trace
1	A	186	Total	C	N	O	S	0	3	0
			1451	942	238	264	7			
1	C	186	Total	C	N	O	S	0	0	0
			1437	930	238	262	7			
1	E	186	Total	C	N	O	S	0	3	0
			1452	943	238	264	7			

There are 51 discrepancies between the modelled and reference sequences:

Chain	Residue	Modelled	Actual	Comment	Reference
A	-16	MET	-	EXPRESSION TAG	UNP D7WGJ0
A	-15	GLY	-	EXPRESSION TAG	UNP D7WGJ0
A	-14	SER	-	EXPRESSION TAG	UNP D7WGJ0
A	-13	HIS	-	EXPRESSION TAG	UNP D7WGJ0
A	-12	HIS	-	EXPRESSION TAG	UNP D7WGJ0
A	-11	HIS	-	EXPRESSION TAG	UNP D7WGJ0
A	-10	HIS	-	EXPRESSION TAG	UNP D7WGJ0
A	-9	HIS	-	EXPRESSION TAG	UNP D7WGJ0
A	-8	HIS	-	EXPRESSION TAG	UNP D7WGJ0
A	-7	GLU	-	EXPRESSION TAG	UNP D7WGJ0
A	-6	ASN	-	EXPRESSION TAG	UNP D7WGJ0
A	-5	LEU	-	EXPRESSION TAG	UNP D7WGJ0
A	-4	TYR	-	EXPRESSION TAG	UNP D7WGJ0
A	-3	PHE	-	EXPRESSION TAG	UNP D7WGJ0
A	-2	GLN	-	EXPRESSION TAG	UNP D7WGJ0
A	-1	GLY	-	EXPRESSION TAG	UNP D7WGJ0
A	0	HIS	-	EXPRESSION TAG	UNP D7WGJ0
C	-16	MET	-	EXPRESSION TAG	UNP D7WGJ0
C	-15	GLY	-	EXPRESSION TAG	UNP D7WGJ0
C	-14	SER	-	EXPRESSION TAG	UNP D7WGJ0
C	-13	HIS	-	EXPRESSION TAG	UNP D7WGJ0
C	-12	HIS	-	EXPRESSION TAG	UNP D7WGJ0
C	-11	HIS	-	EXPRESSION TAG	UNP D7WGJ0

Continued on next page...

Continued from previous page...

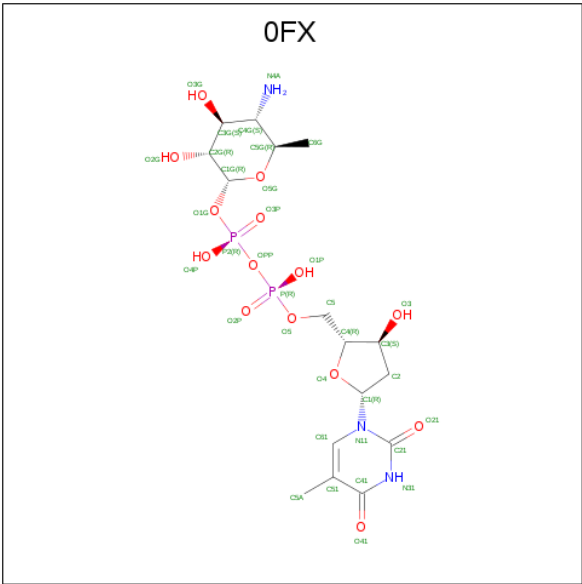
Chain	Residue	Modelled	Actual	Comment	Reference
C	-10	HIS	-	EXPRESSION TAG	UNP D7WGJ0
C	-9	HIS	-	EXPRESSION TAG	UNP D7WGJ0
C	-8	HIS	-	EXPRESSION TAG	UNP D7WGJ0
C	-7	GLU	-	EXPRESSION TAG	UNP D7WGJ0
C	-6	ASN	-	EXPRESSION TAG	UNP D7WGJ0
C	-5	LEU	-	EXPRESSION TAG	UNP D7WGJ0
C	-4	TYR	-	EXPRESSION TAG	UNP D7WGJ0
C	-3	PHE	-	EXPRESSION TAG	UNP D7WGJ0
C	-2	GLN	-	EXPRESSION TAG	UNP D7WGJ0
C	-1	GLY	-	EXPRESSION TAG	UNP D7WGJ0
C	0	HIS	-	EXPRESSION TAG	UNP D7WGJ0
E	-16	MET	-	EXPRESSION TAG	UNP D7WGJ0
E	-15	GLY	-	EXPRESSION TAG	UNP D7WGJ0
E	-14	SER	-	EXPRESSION TAG	UNP D7WGJ0
E	-13	HIS	-	EXPRESSION TAG	UNP D7WGJ0
E	-12	HIS	-	EXPRESSION TAG	UNP D7WGJ0
E	-11	HIS	-	EXPRESSION TAG	UNP D7WGJ0
E	-10	HIS	-	EXPRESSION TAG	UNP D7WGJ0
E	-9	HIS	-	EXPRESSION TAG	UNP D7WGJ0
E	-8	HIS	-	EXPRESSION TAG	UNP D7WGJ0
E	-7	GLU	-	EXPRESSION TAG	UNP D7WGJ0
E	-6	ASN	-	EXPRESSION TAG	UNP D7WGJ0
E	-5	LEU	-	EXPRESSION TAG	UNP D7WGJ0
E	-4	TYR	-	EXPRESSION TAG	UNP D7WGJ0
E	-3	PHE	-	EXPRESSION TAG	UNP D7WGJ0
E	-2	GLN	-	EXPRESSION TAG	UNP D7WGJ0
E	-1	GLY	-	EXPRESSION TAG	UNP D7WGJ0
E	0	HIS	-	EXPRESSION TAG	UNP D7WGJ0

- Molecule 2 is COENZYME A (three-letter code: COA) (formula: $C_{21}H_{36}N_7O_{16}P_3S$).



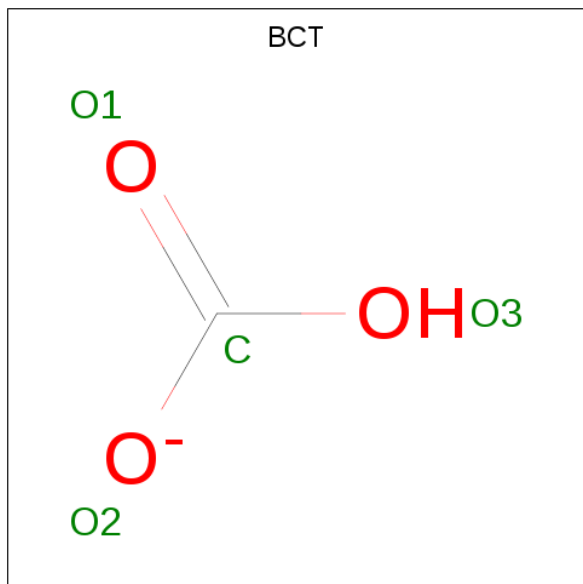
Mol	Chain	Residues	Atoms					ZeroOcc	AltConf	
2	A	1	Total	C	N	O	P	S	0	0
			48	21	7	16	3	1		
2	C	1	Total	C	N	O	P	S	0	0
			48	21	7	16	3	1		
2	E	1	Total	C	N	O	P	S	0	0
			48	21	7	16	3	1		

- Molecule 3 is dTDP-4-amino-4,6-dideoxyglucose (three-letter code: 0FX) (formula: C₁₆H₂₇N₃O₁₄P₂).



Mol	Chain	Residues	Atoms					ZeroOcc	AltConf
3	A	1	Total	C	N	O	P	0	0
			35	16	3	14	2		
3	C	1	Total	C	N	O	P	0	0
			35	16	3	14	2		
3	E	1	Total	C	N	O	P	0	0
			35	16	3	14	2		

- Molecule 4 is BICARBONATE ION (three-letter code: BCT) (formula: CHO_3^-).



Mol	Chain	Residues	Atoms			ZeroOcc	AltConf
4	A	1	Total	C	O	0	0
			4	1	3		
4	C	1	Total	C	O	0	0
			4	1	3		
4	E	1	Total	C	O	0	0
			4	1	3		

- Molecule 5 is CHLORIDE ION (three-letter code: CL) (formula: Cl).

Mol	Chain	Residues	Atoms		ZeroOcc	AltConf
5	E	1	Total	Cl	0	0
			1	1		

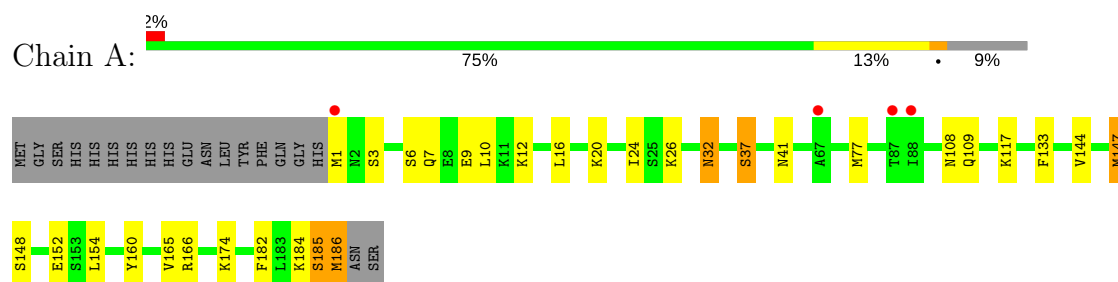
- Molecule 6 is water.

Mol	Chain	Residues	Atoms		ZeroOcc	AltConf
6	A	112	Total 112	O 112	0	0
6	C	97	Total 97	O 97	0	0
6	E	89	Total 89	O 89	0	0

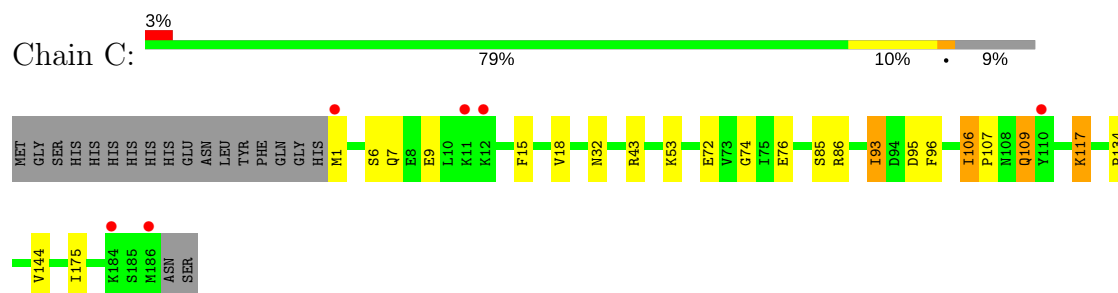
3 Residue-property plots [i](#)

These plots are drawn for all protein, RNA and DNA chains in the entry. The first graphic for a chain summarises the proportions of the various outlier classes displayed in the second graphic. The second graphic shows the sequence view annotated by issues in geometry and electron density. Residues are color-coded according to the number of geometric quality criteria for which they contain at least one outlier: green = 0, yellow = 1, orange = 2 and red = 3 or more. A red dot above a residue indicates a poor fit to the electron density ($RSRZ > 2$). Stretches of 2 or more consecutive residues without any outlier are shown as a green connector. Residues present in the sample, but not in the model, are shown in grey.

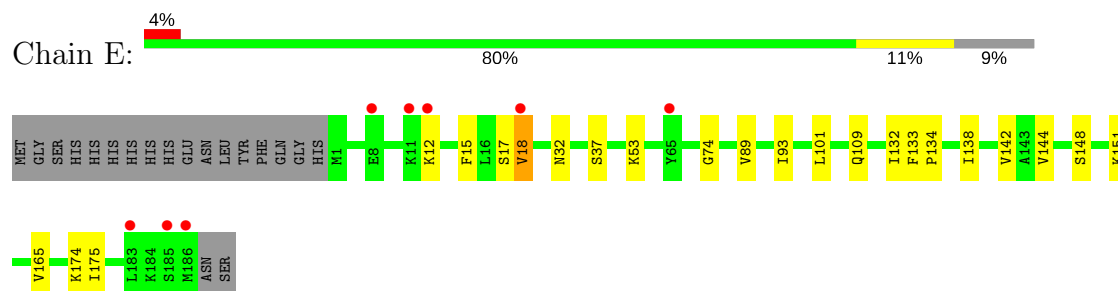
• Molecule 1: Galactoside O-acetyltransferase



• Molecule 1: Galactoside O-acetyltransferase



• Molecule 1: Galactoside O-acetyltransferase



4 Data and refinement statistics

Property	Value	Source
Space group	P 41	Depositor
Cell constants a, b, c, α , β , γ	71.11Å 71.11Å 138.18Å 90.00° 90.00° 90.00°	Depositor
Resolution (Å)	38.66 – 1.80 38.66 – 1.80	Depositor EDS
% Data completeness (in resolution range)	91.0 (38.66-1.80) 91.0 (38.66-1.80)	Depositor EDS
R_{merge}	0.06	Depositor
R_{sym}	0.06	Depositor
$\langle I/\sigma(I) \rangle$ ¹	1.19 (at 1.79Å)	Xtriage
Refinement program	REFMAC 5.5.0109	Depositor
R, R_{free}	0.198 , 0.245 0.199 , 0.245	Depositor DCC
R_{free} test set	2893 reflections (5.01%)	wwPDB-VP
Wilson B-factor (Å ²)	18.6	Xtriage
Anisotropy	0.049	Xtriage
Bulk solvent k_{sol} (e/Å ³), B_{sol} (Å ²)	0.35 , 45.1	EDS
L-test for twinning ²	$\langle L \rangle = 0.51$, $\langle L^2 \rangle = 0.34$	Xtriage
Estimated twinning fraction	0.042 for h,-k,-l	Xtriage
F_o, F_c correlation	0.96	EDS
Total number of atoms	4900	wwPDB-VP
Average B, all atoms (Å ²)	27.0	wwPDB-VP

Xtriage's analysis on translational NCS is as follows: *The largest off-origin peak in the Patterson function is 5.11% of the height of the origin peak. No significant pseudotranslation is detected.*

¹Intensities estimated from amplitudes.

²Theoretical values of $\langle |L| \rangle$, $\langle L^2 \rangle$ for acentric reflections are 0.5, 0.333 respectively for untwinned datasets, and 0.375, 0.2 for perfectly twinned datasets.

5 Model quality

5.1 Standard geometry

Bond lengths and bond angles in the following residue types are not validated in this section: COA, OFX, BCT, CL

The Z score for a bond length (or angle) is the number of standard deviations the observed value is removed from the expected value. A bond length (or angle) with $|Z| > 5$ is considered an outlier worth inspection. RMSZ is the root-mean-square of all Z scores of the bond lengths (or angles).

Mol	Chain	Bond lengths		Bond angles	
		RMSZ	# Z >5	RMSZ	# Z >5
1	A	0.53	0/1487	1.04	6/2005 (0.3%)
1	C	0.49	0/1463	1.02	4/1972 (0.2%)
1	E	0.45	0/1488	0.98	0/2007
All	All	0.49	0/4438	1.01	10/5984 (0.2%)

There are no bond length outliers.

All (10) bond angle outliers are listed below:

Mol	Chain	Res	Type	Atoms	Z	Observed(°)	Ideal(°)
1	A	117	LYS	CD-CE-NZ	7.21	128.27	111.70
1	A	166	ARG	NE-CZ-NH2	-6.37	117.11	120.30
1	A	154	LEU	CB-CG-CD2	6.34	121.79	111.00
1	C	117	LYS	CD-CE-NZ	5.82	125.08	111.70
1	A	147	MET	CA-CB-CG	-5.79	103.46	113.30
1	C	43	ARG	NE-CZ-NH2	-5.38	117.61	120.30
1	A	77	MET	CG-SD-CE	5.37	108.79	100.20
1	A	152	GLU	OE1-CD-OE2	5.24	129.59	123.30
1	C	144	VAL	CG1-CB-CG2	5.06	119.00	110.90
1	C	95	ASP	CB-CG-OD2	5.06	122.86	118.30

There are no chirality outliers.

There are no planarity outliers.

5.2 Too-close contacts

In the following table, the Non-H and H(model) columns list the number of non-hydrogen atoms and hydrogen atoms in the chain respectively. The H(added) column lists the number of hydrogen atoms added and optimized by MolProbity. The Clashes column lists the number of clashes within the asymmetric unit, whereas Symm-Clashes lists symmetry related clashes.

Mol	Chain	Non-H	H(model)	H(added)	Clashes	Symm-Clashes
1	A	1451	0	1509	16	0
1	C	1437	0	1490	15	0
1	E	1452	0	1511	16	0
2	A	48	0	32	2	0
2	C	48	0	32	1	0
2	E	48	0	32	3	0
3	A	35	0	26	2	0
3	C	35	0	26	3	0
3	E	35	0	26	3	0
4	A	4	0	0	1	0
4	C	4	0	0	2	0
4	E	4	0	0	2	0
5	E	1	0	0	0	0
6	A	112	0	0	1	0
6	C	97	0	0	2	0
6	E	89	0	0	0	0
All	All	4900	0	4684	53	0

The all-atom clashscore is defined as the number of clashes found per 1000 atoms (including hydrogen atoms). The all-atom clashscore for this structure is 6.

All (53) close contacts within the same asymmetric unit are listed below, sorted by their clash magnitude.

Atom-1	Atom-2	Interatomic distance (Å)	Clash overlap (Å)
1:C:76:GLU:OE2	1:C:117:LYS:NZ	2.18	0.76
1:C:6:SER:HB2	1:C:9:GLU:H	1.54	0.71
1:A:6:SER:OG	1:A:9:GLU:OE1	2.09	0.70
3:E:1500:0FX:N4A	4:E:453:BCT:O3	2.23	0.70
3:E:1500:0FX:H8	4:E:453:BCT:C	2.05	0.70
1:A:182:PHE:O	1:A:185:SER:HB3	1.93	0.67
1:C:15:PHE:HB2	1:C:18:VAL:CG2	2.28	0.63
1:C:6:SER:HB2	1:C:9:GLU:HG3	1.82	0.62
3:C:1500:0FX:H8	4:C:453:BCT:C	2.12	0.61
1:E:133[B]:PHE:CD2	1:E:151:LYS:HG2	2.38	0.57
3:A:1500:0FX:N4A	2:C:189:COA:S1P	2.79	0.56
1:A:160:TYR:HB3	1:A:165:VAL:HB	1.87	0.55
1:C:15:PHE:HB2	1:C:18:VAL:HG22	1.89	0.54
1:E:148[B]:SER:HB2	1:E:165:VAL:HG12	1.89	0.53
1:E:148[A]:SER:HB3	1:E:165:VAL:HG12	1.89	0.53
1:E:17:SER:HB3	1:E:37:SER:HB2	1.91	0.53
1:A:148[B]:SER:HB3	1:A:165:VAL:HG12	1.92	0.52
1:E:133[A]:PHE:HB3	1:E:134:PRO:CD	2.40	0.52

Continued on next page...

Continued from previous page...

Atom-1	Atom-2	Interatomic distance (Å)	Clash overlap (Å)
1:A:148[A]:SER:HB2	1:A:165:VAL:HG12	1.92	0.51
1:E:138:ILE:HG22	1:E:142:VAL:HB	1.92	0.50
1:A:41:ASN:HB3	6:A:212:HOH:O	2.11	0.49
1:E:144:VAL:CG1	1:E:148[B]:SER:OG	2.61	0.48
1:A:144:VAL:CG1	1:A:148[A]:SER:OG	2.61	0.48
1:A:184:LYS:O	1:A:186:MET:N	2.47	0.48
1:E:89:VAL:HG22	1:E:132:ILE:HD12	1.96	0.48
1:A:133[B]:PHE:CZ	2:A:189:COA:H61	2.49	0.47
1:A:16:LEU:HD23	1:A:37[A]:SER:OG	2.13	0.47
1:C:109:GLN:HE21	1:C:109:GLN:HB2	1.51	0.46
1:C:15:PHE:CB	1:C:18:VAL:HG22	2.45	0.46
1:A:186:MET:H	1:A:186:MET:HG2	1.60	0.46
1:A:148[A]:SER:HB2	1:A:165:VAL:CG1	2.46	0.46
1:C:85:SER:O	1:C:86:ARG:HB2	2.16	0.46
3:A:1500:0FX:H8	4:A:453:BCT:C	2.28	0.46
1:C:106:ILE:HA	1:C:107:PRO:HD3	1.87	0.45
1:E:15:PHE:HB2	1:E:18:VAL:HG22	1.98	0.45
1:E:93:ILE:HG22	2:E:189:COA:H22	1.97	0.45
1:C:93:ILE:HB	1:C:134:PRO:HG2	1.99	0.45
1:C:175:ILE:CG1	1:E:101:LEU:HD23	2.46	0.45
2:A:189:COA:S1P	3:E:1500:0FX:N4A	2.90	0.45
3:C:1500:0FX:N4A	2:E:189:COA:S1P	2.90	0.45
1:E:151:LYS:NZ	2:E:189:COA:O1A	2.50	0.44
1:A:10:LEU:HD11	1:A:24:ILE:HD12	1.99	0.44
1:C:53:LYS:O	1:C:74:GLY:HA2	2.18	0.43
1:C:175:ILE:HG13	1:E:101:LEU:HD23	2.01	0.43
3:C:1500:0FX:N4A	4:C:453:BCT:O2	2.43	0.42
1:C:96:PHE:CD2	6:C:246:HOH:O	2.71	0.42
1:A:32:ASN:HA	1:A:32:ASN:HD22	1.57	0.41
1:C:117:LYS:HE2	6:C:264:HOH:O	2.21	0.41
1:E:148[A]:SER:HB3	1:E:165:VAL:CG1	2.51	0.41
1:A:147:MET:HB3	1:A:147:MET:HE2	1.87	0.41
1:A:3:SER:O	1:A:26:LYS:HD2	2.21	0.41
1:E:53:LYS:O	1:E:74:GLY:HA2	2.21	0.41
1:E:148[B]:SER:HB2	1:E:165:VAL:CG1	2.51	0.40

There are no symmetry-related clashes.

5.3 Torsion angles

5.3.1 Protein backbone

In the following table, the Percentiles column shows the percent Ramachandran outliers of the chain as a percentile score with respect to all X-ray entries followed by that with respect to entries of similar resolution.

The Analysed column shows the number of residues for which the backbone conformation was analysed, and the total number of residues.

Mol	Chain	Analysed	Favoured	Allowed	Outliers	Percentiles	
1	A	187/205 (91%)	175 (94%)	11 (6%)	1 (0%)	31	16
1	C	184/205 (90%)	176 (96%)	8 (4%)	0	100	100
1	E	187/205 (91%)	179 (96%)	8 (4%)	0	100	100
All	All	558/615 (91%)	530 (95%)	27 (5%)	1 (0%)	49	34

All (1) Ramachandran outliers are listed below:

Mol	Chain	Res	Type
1	A	185	SER

5.3.2 Protein sidechains

In the following table, the Percentiles column shows the percent sidechain outliers of the chain as a percentile score with respect to all X-ray entries followed by that with respect to entries of similar resolution.

The Analysed column shows the number of residues for which the sidechain conformation was analysed, and the total number of residues.

Mol	Chain	Analysed	Rotameric	Outliers	Percentiles	
1	A	160/174 (92%)	149 (93%)	11 (7%)	17	5
1	C	157/174 (90%)	150 (96%)	7 (4%)	30	14
1	E	160/174 (92%)	154 (96%)	6 (4%)	36	20
All	All	477/522 (91%)	453 (95%)	24 (5%)	27	11

All (24) residues with a non-rotameric sidechain are listed below:

Mol	Chain	Res	Type
1	A	1	MET
1	A	7	GLN

Continued on next page...

Continued from previous page...

Mol	Chain	Res	Type
1	A	12	LYS
1	A	20	LYS
1	A	32	ASN
1	A	37[A]	SER
1	A	37[B]	SER
1	A	108	ASN
1	A	109	GLN
1	A	174	LYS
1	A	186	MET
1	C	1	MET
1	C	7	GLN
1	C	32	ASN
1	C	72	GLU
1	C	93	ILE
1	C	106	ILE
1	C	109	GLN
1	E	12	LYS
1	E	18	VAL
1	E	32	ASN
1	E	109	GLN
1	E	174	LYS
1	E	175	ILE

Some sidechains can be flipped to improve hydrogen bonding and reduce clashes. All (6) such sidechains are listed below:

Mol	Chain	Res	Type
1	A	32	ASN
1	A	109	GLN
1	C	32	ASN
1	C	109	GLN
1	E	32	ASN
1	E	109	GLN

5.3.3 RNA ⓘ

There are no RNA molecules in this entry.

5.4 Non-standard residues in protein, DNA, RNA chains ⓘ

There are no non-standard protein/DNA/RNA residues in this entry.

5.5 Carbohydrates [i](#)

There are no carbohydrates in this entry.

5.6 Ligand geometry [i](#)

Of 10 ligands modelled in this entry, 1 is monoatomic - leaving 9 for Mogul analysis.

In the following table, the Counts columns list the number of bonds (or angles) for which Mogul statistics could be retrieved, the number of bonds (or angles) that are observed in the model and the number of bonds (or angles) that are defined in the Chemical Component Dictionary. The Link column lists molecule types, if any, to which the group is linked. The Z score for a bond length (or angle) is the number of standard deviations the observed value is removed from the expected value. A bond length (or angle) with $|Z| > 2$ is considered an outlier worth inspection. RMSZ is the root-mean-square of all Z scores of the bond lengths (or angles).

Mol	Type	Chain	Res	Link	Bond lengths			Bond angles		
					Counts	RMSZ	# Z > 2	Counts	RMSZ	# Z > 2
3	0FX	A	1500	-	29,37,37	0.64	0	41,57,57	2.32	9 (21%)
2	COA	A	189	-	41,50,50	0.82	1 (2%)	51,75,75	1.87	10 (19%)
4	BCT	A	453	-	0,3,3	0.00	-	0,3,3	0.00	-
3	0FX	C	1500	-	29,37,37	0.60	0	41,57,57	1.91	11 (26%)
2	COA	C	189	-	41,50,50	0.69	1 (2%)	51,75,75	1.82	8 (15%)
4	BCT	C	453	-	0,3,3	0.00	-	0,3,3	0.00	-
3	0FX	E	1500	-	29,37,37	0.64	0	41,57,57	1.90	12 (29%)
2	COA	E	189	-	41,50,50	0.85	2 (4%)	51,75,75	2.04	12 (23%)
4	BCT	E	453	-	0,3,3	0.00	-	0,3,3	0.00	-

In the following table, the Chirals column lists the number of chiral outliers, the number of chiral centers analysed, the number of these observed in the model and the number defined in the Chemical Component Dictionary. Similar counts are reported in the Torsion and Rings columns. '-' means no outliers of that kind were identified.

Mol	Type	Chain	Res	Link	Chirals	Torsions	Rings
3	0FX	A	1500	-	-	0/17/53/53	0/3/3/3
2	COA	A	189	-	-	0/44/64/64	0/3/3/3
4	BCT	A	453	-	-	0/0/0/0	0/0/0/0
3	0FX	C	1500	-	-	0/17/53/53	0/3/3/3
2	COA	C	189	-	-	0/44/64/64	0/3/3/3
4	BCT	C	453	-	-	0/0/0/0	0/0/0/0
3	0FX	E	1500	-	-	0/17/53/53	0/3/3/3
2	COA	E	189	-	-	0/44/64/64	0/3/3/3
4	BCT	E	453	-	-	0/0/0/0	0/0/0/0

All (4) bond length outliers are listed below:

Mol	Chain	Res	Type	Atoms	Z	Observed(Å)	Ideal(Å)
2	C	189	COA	O4B-C1B	2.13	1.44	1.41
2	E	189	COA	P3B-O3B	2.24	1.63	1.59
2	A	189	COA	P3B-O3B	2.56	1.64	1.59
2	E	189	COA	O4B-C1B	3.00	1.45	1.41

All (62) bond angle outliers are listed below:

Mol	Chain	Res	Type	Atoms	Z	Observed(°)	Ideal(°)
2	C	189	COA	N3A-C2A-N1A	-9.53	120.71	128.86
2	E	189	COA	N3A-C2A-N1A	-9.04	121.13	128.86
2	A	189	COA	N3A-C2A-N1A	-7.75	122.23	128.86
2	E	189	COA	CDP-CBP-CCP	-3.32	102.81	108.23
3	C	1500	0FX	C1G-C2G-C3G	-3.23	103.22	109.98
2	A	189	COA	C6P-C7P-N8P	-2.92	105.93	111.85
3	E	1500	0FX	C3G-C4G-N4A	-2.81	105.28	111.05
2	A	189	COA	C7P-N8P-C9P	-2.78	117.49	122.59
3	A	1500	0FX	P-OPP-P2	-2.71	123.52	132.63
2	E	189	COA	O5A-P2A-O6A	-2.66	95.38	107.75
2	E	189	COA	O3B-P3B-O7A	-2.62	99.26	109.39
2	E	189	COA	CEP-CBP-CDP	-2.46	104.02	109.16
2	C	189	COA	CDP-CBP-CCP	-2.45	104.23	108.23
3	C	1500	0FX	O1G-P2-O3P	-2.45	100.05	109.38
3	E	1500	0FX	C5A-C51-C41	-2.37	116.91	121.29
2	C	189	COA	O3B-P3B-O7A	-2.37	100.26	109.39
3	E	1500	0FX	O4-C4-C3	-2.35	100.09	105.69
3	E	1500	0FX	C51-C61-N11	-2.35	119.61	122.15
2	C	189	COA	C6P-C7P-N8P	-2.32	107.16	111.85
2	C	189	COA	C7P-C6P-C5P	-2.31	108.52	112.31
3	A	1500	0FX	O3G-C3G-C4G	-2.18	106.30	110.22
3	A	1500	0FX	C1G-C2G-C3G	-2.15	105.47	109.98
2	C	189	COA	C5B-C4B-C3B	-2.12	107.22	114.35
3	C	1500	0FX	C2-C1-N11	-2.11	109.34	114.27
2	A	189	COA	O3B-P3B-O7A	-2.11	101.25	109.39
2	E	189	COA	C1B-N9A-C4A	-2.07	123.05	126.64
2	C	189	COA	C1B-N9A-C4A	-2.07	123.06	126.64
2	E	189	COA	C4A-C5A-N7A	-2.06	107.42	109.41
2	A	189	COA	O6A-CCP-CBP	2.01	113.77	110.55
3	E	1500	0FX	O5-C5-C4	2.03	116.07	109.00
3	C	1500	0FX	C3G-C4G-C5G	2.04	114.92	110.67
3	C	1500	0FX	O5G-C1G-C2G	2.09	114.84	110.34
3	A	1500	0FX	O2G-C2G-C1G	2.10	115.21	110.06
2	A	189	COA	O2B-C2B-C3B	2.12	117.17	111.17

Continued on next page...

Continued from previous page...

Mol	Chain	Res	Type	Atoms	Z	Observed(°)	Ideal(°)
3	E	1500	0FX	O5G-C1G-C2G	2.14	114.95	110.34
2	C	189	COA	O9A-P3B-O7A	2.17	119.06	110.60
2	E	189	COA	C2A-N1A-C6A	2.19	122.47	118.75
3	E	1500	0FX	C4-O4-C1	2.38	115.20	109.43
3	C	1500	0FX	O5G-C5G-C6G	2.42	111.78	106.71
3	E	1500	0FX	OPP-P2-O1G	2.50	107.64	102.53
2	E	189	COA	C3P-N4P-C5P	2.70	127.96	122.85
3	E	1500	0FX	C5A-C51-C61	2.70	124.26	118.67
3	A	1500	0FX	OPP-P2-O1G	2.75	108.14	102.53
2	A	189	COA	OAP-CAP-CBP	2.77	116.77	110.25
2	E	189	COA	O5A-P2A-O4A	2.92	126.98	112.14
3	C	1500	0FX	OPP-P2-O1G	2.94	108.52	102.53
2	A	189	COA	O9A-P3B-O8A	3.06	119.70	107.59
3	C	1500	0FX	O5G-C1G-O1G	3.14	115.47	111.36
3	A	1500	0FX	O5G-C5G-C6G	3.38	113.80	106.71
2	E	189	COA	CDP-CBP-CAP	3.56	115.00	108.82
2	E	189	COA	O9A-P3B-O7A	3.79	125.40	110.60
3	C	1500	0FX	O1G-C1G-C2G	3.83	115.40	108.38
3	E	1500	0FX	O5G-C1G-O1G	3.87	116.43	111.36
3	C	1500	0FX	O4-C1-N11	4.04	114.58	107.78
2	A	189	COA	C4B-O4B-C1B	4.07	114.07	109.83
3	E	1500	0FX	O1G-C1G-C2G	4.43	116.49	108.38
2	A	189	COA	CDP-CBP-CAP	4.83	117.20	108.82
3	E	1500	0FX	C41-N31-C21	5.34	119.69	115.14
3	A	1500	0FX	O5G-C1G-O1G	5.60	118.69	111.36
3	C	1500	0FX	C41-N31-C21	6.49	120.67	115.14
3	A	1500	0FX	O1G-C1G-C2G	6.96	121.14	108.38
3	A	1500	0FX	C41-N31-C21	8.22	122.14	115.14

There are no chirality outliers.

There are no torsion outliers.

There are no ring outliers.

9 monomers are involved in 11 short contacts:

Mol	Chain	Res	Type	Clashes	Symm-Clashes
3	A	1500	0FX	2	0
2	A	189	COA	2	0
4	A	453	BCT	1	0
3	C	1500	0FX	3	0
2	C	189	COA	1	0
4	C	453	BCT	2	0

Continued on next page...

Continued from previous page...

Mol	Chain	Res	Type	Clashes	Symm-Clashes
3	E	1500	0FX	3	0
2	E	189	COA	3	0
4	E	453	BCT	2	0

5.7 Other polymers [i](#)

There are no such residues in this entry.

5.8 Polymer linkage issues [i](#)

There are no chain breaks in this entry.

6 Fit of model and data [i](#)

6.1 Protein, DNA and RNA chains [i](#)

In the following table, the column labelled ‘#RSRZ > 2’ contains the number (and percentage) of RSRZ outliers, followed by percent RSRZ outliers for the chain as percentile scores relative to all X-ray entries and entries of similar resolution. The OWAB column contains the minimum, median, 95th percentile and maximum values of the occupancy-weighted average B-factor per residue. The column labelled ‘Q < 0.9’ lists the number of (and percentage) of residues with an average occupancy less than 0.9.

Mol	Chain	Analysed	<RSRZ>	#RSRZ>2	OWAB(Å ²)	Q<0.9
1	A	186/205 (90%)	0.02	4 (2%) 62 57	11, 22, 46, 65	0
1	C	186/205 (90%)	-0.14	6 (3%) 47 42	13, 26, 47, 64	0
1	E	186/205 (90%)	-0.05	8 (4%) 35 29	13, 27, 49, 67	0
All	All	558/615 (90%)	-0.06	18 (3%) 47 42	11, 24, 47, 67	0

All (18) RSRZ outliers are listed below:

Mol	Chain	Res	Type	RSRZ
1	A	1	MET	3.7
1	E	8	GLU	3.2
1	E	186	MET	3.0
1	A	88	ILE	2.5
1	E	185	SER	2.4
1	C	1	MET	2.4
1	E	183	LEU	2.3
1	C	110	TYR	2.3
1	E	11	LYS	2.3
1	C	11	LYS	2.2
1	C	186	MET	2.2
1	E	12	LYS	2.2
1	A	87	THR	2.2
1	A	67	ALA	2.1
1	E	18	VAL	2.1
1	E	65	TYR	2.0
1	C	12	LYS	2.0
1	C	184	LYS	2.0

6.2 Non-standard residues in protein, DNA, RNA chains [i](#)

There are no non-standard protein/DNA/RNA residues in this entry.

6.3 Carbohydrates [i](#)

There are no carbohydrates in this entry.

6.4 Ligands [i](#)

In the following table, the Atoms column lists the number of modelled atoms in the group and the number defined in the chemical component dictionary. The B-factors column lists the minimum, median, 95th percentile and maximum values of B factors of atoms in the group. The column labelled 'Q< 0.9' lists the number of atoms with occupancy less than 0.9.

Mol	Type	Chain	Res	Atoms	RSCC	RSR	B-factors(\AA^2)	Q<0.9
4	BCT	E	453	4/4	0.87	0.25	17,20,20,21	4
4	BCT	A	453	4/4	0.90	0.29	20,23,23,24	4
3	0FX	A	1500	35/35	0.92	0.10	32,40,49,52	0
4	BCT	C	453	4/4	0.92	0.19	21,23,23,25	4
3	0FX	C	1500	35/35	0.96	0.08	25,33,38,41	0
2	COA	E	189	48/48	0.96	0.07	14,22,33,39	0
2	COA	A	189	48/48	0.97	0.08	11,21,30,37	0
3	0FX	E	1500	35/35	0.97	0.07	22,29,33,35	0
2	COA	C	189	48/48	0.98	0.06	11,21,40,42	0
5	CL	E	190	1/1	0.99	0.14	20,20,20,20	0

6.5 Other polymers [i](#)

There are no such residues in this entry.