



Full wwPDB X-ray Structure Validation Report ⓘ

Mar 26, 2018 – 11:55 AM EDT

PDB ID : 5VCQ
Title : A Hyrdrogen Producing Hybrid Streptavidin-Diiron Catalyst
Authors : Simmons, C.R.; Roy, A.; Vaughn, M.D.; Allen, J.P.; Ghirlanda, G.
Deposited on : 2017-03-31
Resolution : 2.05 Å(reported)

This is a Full wwPDB X-ray Structure Validation Report for a publicly released PDB entry.

We welcome your comments at validation@mail.wwpdb.org

A user guide is available at

<https://www.wwpdb.org/validation/2017/XrayValidationReportHelp>

with specific help available everywhere you see the ⓘ symbol.

The following versions of software and data (see [references ⓘ](#)) were used in the production of this report:

MolProbity : 4.02b-467
Mogul : 1.7.3 (157068), CSD as539be (2018)
Xtriage (Phenix) : 1.13
EDS : rb-20031021
Percentile statistics : 20171227.v01 (using entries in the PDB archive December 27th 2017)
Refmac : 5.8.0158
CCP4 : 7.0 (Gargrove)
Ideal geometry (proteins) : Engh & Huber (2001)
Ideal geometry (DNA, RNA) : Parkinson et al. (1996)
Validation Pipeline (wwPDB-VP) : rb-20031021

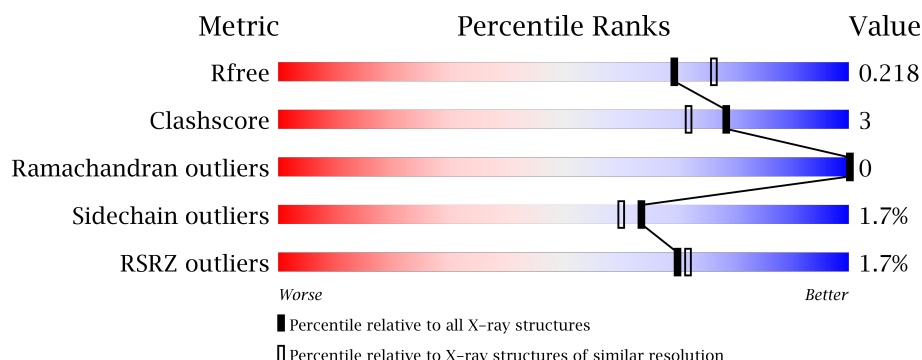
1 Overall quality at a glance

The following experimental techniques were used to determine the structure:

X-RAY DIFFRACTION

The reported resolution of this entry is 2.05 Å.

Percentile scores (ranging between 0-100) for global validation metrics of the entry are shown in the following graphic. The table shows the number of entries on which the scores are based.



Metric	Whole archive (#Entries)	Similar resolution (#Entries, resolution range(Å))
R_{free}	111664	2250 (2.08-2.04)
Clashscore	122126	2358 (2.08-2.04)
Ramachandran outliers	120053	2339 (2.08-2.04)
Sidechain outliers	120020	2339 (2.08-2.04)
RSRZ outliers	108989	2211 (2.08-2.04)

The table below summarises the geometric issues observed across the polymeric chains and their fit to the electron density. The red, orange, yellow and green segments on the lower bar indicate the fraction of residues that contain outliers for ≥ 3 , 2, 1 and 0 types of geometric quality criteria. A grey segment represents the fraction of residues that are not modelled. The numeric value for each fraction is indicated below the corresponding segment, with a dot representing fractions $\leq 5\%$. The upper red bar (where present) indicates the fraction of residues that have poor fit to the electron density. The numeric value is given above the bar.

Mol	Chain	Length	Quality of chain
1	A	183	<div> <div style="width: 100%; height: 10px; position: relative;"> <div style="position: absolute; top: -10px; left: 0; width: 100%; height: 1px; background-color: red;"></div> <div style="position: absolute; bottom: 0; left: 0; width: 100%; height: 10px;"> <div style="width: 61%; height: 10px; background-color: green;"></div> <div style="width: 5%; height: 10px; background-color: yellow;"></div> <div style="width: 34%; height: 10px; background-color: grey;"></div> </div> </div> </div>
1	B	183	<div> <div style="width: 100%; height: 10px; position: relative;"> <div style="position: absolute; top: -10px; left: 0; width: 100%; height: 1px; background-color: red;"></div> <div style="position: absolute; bottom: 0; left: 0; width: 100%; height: 10px;"> <div style="width: 64%; height: 10px; background-color: green;"></div> <div style="width: 5%; height: 10px; background-color: yellow;"></div> <div style="width: 34%; height: 10px; background-color: grey;"></div> </div> </div> </div>
1	C	183	<div> <div style="width: 100%; height: 10px; position: relative;"> <div style="position: absolute; top: -10px; left: 0; width: 100%; height: 1px; background-color: red;"></div> <div style="position: absolute; bottom: 0; left: 0; width: 100%; height: 10px;"> <div style="width: 61%; height: 10px; background-color: green;"></div> <div style="width: 5%; height: 10px; background-color: yellow;"></div> <div style="width: 34%; height: 10px; background-color: grey;"></div> </div> </div> </div>
1	D	183	<div> <div style="width: 100%; height: 10px; position: relative;"> <div style="position: absolute; top: -10px; left: 0; width: 100%; height: 1px; background-color: red;"></div> <div style="position: absolute; bottom: 0; left: 0; width: 100%; height: 10px;"> <div style="width: 62%; height: 10px; background-color: green;"></div> <div style="width: 5%; height: 10px; background-color: yellow;"></div> <div style="width: 34%; height: 10px; background-color: grey;"></div> </div> </div> </div>

2 Entry composition [i](#)

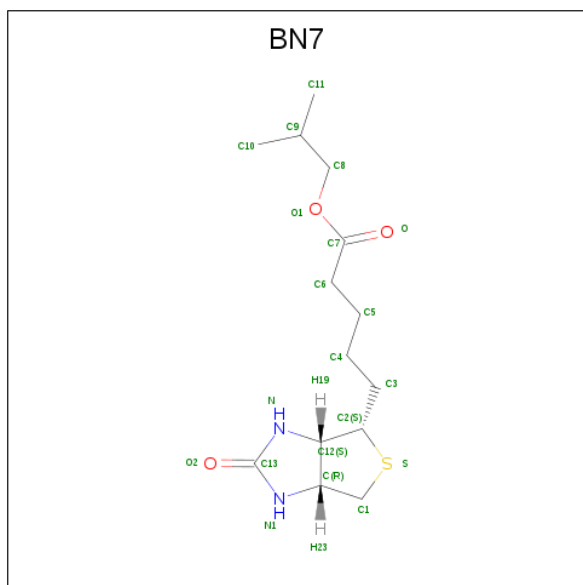
There are 3 unique types of molecules in this entry. The entry contains 4203 atoms, of which 0 are hydrogens and 0 are deuteriums.

In the tables below, the ZeroOcc column contains the number of atoms modelled with zero occupancy, the AltConf column contains the number of residues with at least one atom in alternate conformation and the Trace column contains the number of residues modelled with at most 2 atoms.

- Molecule 1 is a protein called Streptavidin.

Mol	Chain	Residues	Atoms				ZeroOcc	AltConf	Trace
1	A	121	Total	C	N	O	0	5	0
			920	575	158	187			
1	B	120	Total	C	N	O	0	2	0
			905	566	156	183			
1	C	121	Total	C	N	O	0	2	0
			907	566	157	184			
1	D	120	Total	C	N	O	0	4	0
			914	571	157	186			

- Molecule 2 is 2-methylpropyl 5-[(3aS,4S,6aR)-2-oxohexahydro-1H-thieno[3,4-d]imidazol-4-yl]pentanoate (three-letter code: BN7) (formula: C₁₄H₂₄N₂O₃S).



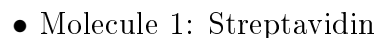
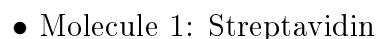
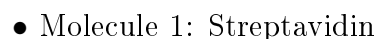
Continued from previous page...

Mol	Chain	Residues	Atoms					ZeroOcc	AltConf
2	C	1	Total	C	N	O	S	0	0
			20	14	2	3	1		
2	D	1	Total	C	N	O	S	0	0
			20	14	2	3	1		

- Molecule 3 is water.

Mol	Chain	Residues	Atoms		ZeroOcc	AltConf
3	A	104	Total	O	0	0
			104	104		
3	B	127	Total	O	0	0
			127	127		
3	C	129	Total	O	0	0
			129	129		
3	D	117	Total	O	0	0
			117	117		

- Molecule 1: Streptavidin



4 Data and refinement statistics

Property	Value	Source
Space group	P 65	Depositor
Cell constants a, b, c, α , β , γ	56.85Å 56.85Å 239.61Å 90.00° 90.00° 120.00°	Depositor
Resolution (Å)	49.23 – 2.05 49.23 – 2.05	Depositor EDS
% Data completeness (in resolution range)	99.8 (49.23-2.05) 99.8 (49.23-2.05)	Depositor EDS
R_{merge}	0.13	Depositor
R_{sym}	(Not available)	Depositor
$\langle I/\sigma(I) \rangle$ ¹	4.12 (at 2.05Å)	Xtriage
Refinement program	PHENIX 1.9_1692	Depositor
R, R_{free}	0.165 , 0.218 0.166 , 0.218	Depositor DCC
R_{free} test set	2002 reflections (7.35%)	wwPDB-VP
Wilson B-factor (Å ²)	18.9	Xtriage
Anisotropy	0.404	Xtriage
Bulk solvent k_{sol} (e/Å ³), B_{sol} (Å ²)	0.31 , 33.2	EDS
L-test for twinning ²	$\langle L \rangle = 0.53$, $\langle L^2 \rangle = 0.37$	Xtriage
Estimated twinning fraction	0.490 for h,-h-k,-l	Xtriage
F_o, F_c correlation	0.96	EDS
Total number of atoms	4203	wwPDB-VP
Average B, all atoms (Å ²)	21.0	wwPDB-VP

Xtriage's analysis on translational NCS is as follows: *The largest off-origin peak in the Patterson function is 6.76% of the height of the origin peak. No significant pseudotranslation is detected.*

¹Intensities estimated from amplitudes.

²Theoretical values of $\langle |L| \rangle$, $\langle L^2 \rangle$ for acentric reflections are 0.5, 0.333 respectively for untwinned datasets, and 0.375, 0.2 for perfectly twinned datasets.

5 Model quality [i](#)

5.1 Standard geometry [i](#)

Bond lengths and bond angles in the following residue types are not validated in this section: BN7

The Z score for a bond length (or angle) is the number of standard deviations the observed value is removed from the expected value. A bond length (or angle) with $|Z| > 5$ is considered an outlier worth inspection. RMSZ is the root-mean-square of all Z scores of the bond lengths (or angles).

Mol	Chain	Bond lengths		Bond angles	
		RMSZ	$\# Z > 5$	RMSZ	$\# Z > 5$
1	A	0.38	0/955	0.56	0/1307
1	B	0.38	0/937	0.56	0/1283
1	C	0.37	0/934	0.56	0/1278
1	D	0.37	0/950	0.59	0/1301
All	All	0.38	0/3776	0.57	0/5169

There are no bond length outliers.

There are no bond angle outliers.

There are no chirality outliers.

There are no planarity outliers.

5.2 Too-close contacts [i](#)

In the following table, the Non-H and H(model) columns list the number of non-hydrogen atoms and hydrogen atoms in the chain respectively. The H(added) column lists the number of hydrogen atoms added and optimized by MolProbity. The Clashes column lists the number of clashes within the asymmetric unit, whereas Symm-Clashes lists symmetry related clashes.

Mol	Chain	Non-H	H(model)	H(added)	Clashes	Symm-Clashes
1	A	920	0	863	8	0
1	B	905	0	848	2	0
1	C	907	0	849	10	0
1	D	914	0	855	4	0
2	A	20	0	0	0	0
2	B	20	0	0	0	0
2	C	20	0	0	0	0
2	D	20	0	0	0	0
3	A	104	0	0	0	0

Continued on next page...

Continued from previous page...

Mol	Chain	Non-H	H(model)	H(added)	Clashes	Symm-Clashes
3	B	127	0	0	0	0
3	C	129	0	0	4	0
3	D	117	0	0	0	0
All	All	4203	0	3415	22	0

The all-atom clashscore is defined as the number of clashes found per 1000 atoms (including hydrogen atoms). The all-atom clashscore for this structure is 3.

All (22) close contacts within the same asymmetric unit are listed below, sorted by their clash magnitude.

Atom-1	Atom-2	Interatomic distance (Å)	Clash overlap (Å)
1:A:134:LYS:HB3	1:A:134:LYS:NZ	2.09	0.67
1:C:21:TRP:CE3	1:C:132:LYS:HB2	2.38	0.58
1:B:134:LYS:H	1:B:134:LYS:HE2	1.72	0.54
1:C:40[A]:THR:HG21	3:C:391:HOH:O	2.09	0.52
1:C:21:TRP:CZ3	1:C:132:LYS:HB2	2.46	0.50
1:C:40[A]:THR:HG22	3:C:328:HOH:O	2.10	0.50
1:A:101:GLU:H	1:A:101:GLU:CD	2.14	0.50
1:A:51:GLU:OE2	1:A:84:ARG:HD2	2.11	0.49
1:C:105:ASN:ND2	1:C:129:THR:HG23	2.27	0.49
1:D:22:TYR:CZ	1:D:134:LYS:HG3	2.48	0.49
1:D:131:THR:OG1	1:D:133:VAL:HG12	2.13	0.48
1:A:91:THR:HB	1:B:91:THR:HB	1.99	0.45
1:A:134:LYS:HB3	1:A:134:LYS:HZ3	1.81	0.44
1:C:14:GLU:N	3:C:308:HOH:O	2.52	0.43
1:C:30:ILE:O	1:C:41:GLY:HA3	2.19	0.42
1:A:110[A]:LEU:HD23	1:A:124:LEU:HD12	2.01	0.42
1:C:40[A]:THR:HG23	3:C:302:HOH:O	2.21	0.41
1:A:133:VAL:HA	1:A:134:LYS:C	2.41	0.41
1:A:90[A]:THR:OG1	1:A:110[A]:LEU:HD13	2.21	0.41
1:D:134:LYS:HA	1:D:135:PRO:HD2	1.87	0.41
1:C:91:THR:HB	1:D:91:THR:HB	2.02	0.40
1:C:105:ASN:HD22	1:C:129:THR:HG23	1.85	0.40

There are no symmetry-related clashes.

5.3 Torsion angles

5.3.1 Protein backbone

In the following table, the Percentiles column shows the percent Ramachandran outliers of the chain as a percentile score with respect to all X-ray entries followed by that with respect to entries of similar resolution.

The Analysed column shows the number of residues for which the backbone conformation was analysed, and the total number of residues.

Mol	Chain	Analysed	Favoured	Allowed	Outliers	Percentiles	
1	A	123/183 (67%)	119 (97%)	4 (3%)	0	100	100
1	B	120/183 (66%)	115 (96%)	5 (4%)	0	100	100
1	C	120/183 (66%)	115 (96%)	5 (4%)	0	100	100
1	D	122/183 (67%)	120 (98%)	2 (2%)	0	100	100
All	All	485/732 (66%)	469 (97%)	16 (3%)	0	100	100

There are no Ramachandran outliers to report.

5.3.2 Protein sidechains

In the following table, the Percentiles column shows the percent sidechain outliers of the chain as a percentile score with respect to all X-ray entries followed by that with respect to entries of similar resolution.

The Analysed column shows the number of residues for which the sidechain conformation was analysed, and the total number of residues.

Mol	Chain	Analysed	Rotameric	Outliers	Percentiles	
1	A	93/134 (69%)	92 (99%)	1 (1%)	76	74
1	B	91/134 (68%)	88 (97%)	3 (3%)	41	34
1	C	90/134 (67%)	89 (99%)	1 (1%)	76	74
1	D	93/134 (69%)	91 (98%)	2 (2%)	55	49
All	All	367/536 (68%)	360 (98%)	7 (2%)	63	55

All (7) residues with a non-rotameric sidechain are listed below:

Mol	Chain	Res	Type
1	A	134	LYS
1	B	116[A]	GLU

Continued on next page...

Continued from previous page...

Mol	Chain	Res	Type
1	B	116[B]	GLU
1	B	134	LYS
1	C	73	LEU
1	D	73	LEU
1	D	134	LYS

Some sidechains can be flipped to improve hydrogen bonding and reduce clashes. There are no such sidechains identified.

5.3.3 RNA [i](#)

There are no RNA molecules in this entry.

5.4 Non-standard residues in protein, DNA, RNA chains [i](#)

There are no non-standard protein/DNA/RNA residues in this entry.

5.5 Carbohydrates [i](#)

There are no carbohydrates in this entry.

5.6 Ligand geometry [i](#)

4 ligands are modelled in this entry.

In the following table, the Counts columns list the number of bonds (or angles) for which Mogul statistics could be retrieved, the number of bonds (or angles) that are observed in the model and the number of bonds (or angles) that are defined in the Chemical Component Dictionary. The Link column lists molecule types, if any, to which the group is linked. The Z score for a bond length (or angle) is the number of standard deviations the observed value is removed from the expected value. A bond length (or angle) with $|Z| > 2$ is considered an outlier worth inspection. RMSZ is the root-mean-square of all Z scores of the bond lengths (or angles).

Mol	Type	Chain	Res	Link	Bond lengths			Bond angles		
					Counts	RMSZ	$\# Z > 2$	Counts	RMSZ	$\# Z > 2$
2	BN7	A	201	-	21,21,21	1.49	3 (14%)	28,28,28	1.93	7 (25%)
2	BN7	B	201	-	21,21,21	1.36	2 (9%)	28,28,28	1.71	6 (21%)
2	BN7	C	201	-	21,21,21	1.42	3 (14%)	28,28,28	1.85	6 (21%)
2	BN7	D	201	-	21,21,21	1.53	3 (14%)	28,28,28	2.14	8 (28%)

In the following table, the Chirals column lists the number of chiral outliers, the number of chiral centers analysed, the number of these observed in the model and the number defined in the Chemical Component Dictionary. Similar counts are reported in the Torsion and Rings columns. '-' means no outliers of that kind were identified.

Mol	Type	Chain	Res	Link	Chirals	Torsions	Rings
2	BN7	A	201	-	-	0/12/33/33	0/2/2/2
2	BN7	B	201	-	-	0/12/33/33	0/2/2/2
2	BN7	C	201	-	-	0/12/33/33	0/2/2/2
2	BN7	D	201	-	-	0/12/33/33	0/2/2/2

All (11) bond length outliers are listed below:

Mol	Chain	Res	Type	Atoms	Z	Observed(Å)	Ideal(Å)
2	D	201	BN7	C2-S	-4.15	1.76	1.82
2	A	201	BN7	C2-S	-4.09	1.76	1.82
2	B	201	BN7	C2-S	-3.47	1.77	1.82
2	C	201	BN7	C2-S	-3.24	1.77	1.82
2	D	201	BN7	C1-S	-2.26	1.75	1.81
2	C	201	BN7	C1-S	-2.19	1.75	1.81
2	A	201	BN7	C1-S	-2.10	1.75	1.81
2	B	201	BN7	O1-C7	4.30	1.45	1.33
2	A	201	BN7	O1-C7	4.53	1.46	1.33
2	D	201	BN7	O1-C7	4.54	1.46	1.33
2	C	201	BN7	O1-C7	4.70	1.46	1.33

All (27) bond angle outliers are listed below:

Mol	Chain	Res	Type	Atoms	Z	Observed(°)	Ideal(°)
2	A	201	BN7	C1-C-N1	-6.60	106.48	113.15
2	D	201	BN7	C1-C-N1	-6.20	106.88	113.15
2	B	201	BN7	C1-C-N1	-5.67	107.41	113.15
2	C	201	BN7	C1-C-N1	-5.43	107.66	113.15
2	D	201	BN7	C12-C2-S	-4.02	101.26	105.21
2	D	201	BN7	O1-C7-O	-2.96	116.35	123.58
2	D	201	BN7	C-C1-S	-2.95	104.12	106.24
2	C	201	BN7	C12-C2-S	-2.55	102.71	105.21
2	A	201	BN7	O1-C7-O	-2.48	117.53	123.58
2	B	201	BN7	O1-C7-O	-2.44	117.62	123.58
2	A	201	BN7	C12-C2-S	-2.31	102.94	105.21
2	D	201	BN7	C2-C12-N	-2.26	111.04	113.13
2	C	201	BN7	O1-C7-O	-2.16	118.31	123.58
2	A	201	BN7	N-C13-N1	2.08	110.46	108.83
2	B	201	BN7	N-C13-N1	2.09	110.47	108.83

Continued on next page...

Continued from previous page...

Mol	Chain	Res	Type	Atoms	Z	Observed(°)	Ideal(°)
2	B	201	BN7	C1-C-C12	2.21	110.55	108.70
2	B	201	BN7	C1-S-C2	2.42	94.82	89.98
2	A	201	BN7	C1-S-C2	2.54	95.04	89.98
2	C	201	BN7	C1-C-C12	2.87	111.10	108.70
2	A	201	BN7	O1-C8-C9	2.95	118.14	108.89
2	D	201	BN7	C1-S-C2	2.96	95.89	89.98
2	D	201	BN7	O1-C8-C9	2.99	118.27	108.89
2	C	201	BN7	C1-S-C2	3.21	96.39	89.98
2	B	201	BN7	O1-C7-C6	3.54	122.16	111.92
2	A	201	BN7	O1-C7-C6	3.67	122.54	111.92
2	C	201	BN7	O1-C7-C6	3.98	123.42	111.92
2	D	201	BN7	O1-C7-C6	4.25	124.21	111.92

There are no chirality outliers.

There are no torsion outliers.

There are no ring outliers.

No monomer is involved in short contacts.

5.7 Other polymers [i](#)

There are no such residues in this entry.

5.8 Polymer linkage issues [i](#)

There are no chain breaks in this entry.

6 Fit of model and data [i](#)

6.1 Protein, DNA and RNA chains [i](#)

In the following table, the column labelled ‘#RSRZ> 2’ contains the number (and percentage) of RSRZ outliers, followed by percent RSRZ outliers for the chain as percentile scores relative to all X-ray entries and entries of similar resolution. The OWAB column contains the minimum, median, 95th percentile and maximum values of the occupancy-weighted average B-factor per residue. The column labelled ‘Q< 0.9’ lists the number of (and percentage) of residues with an average occupancy less than 0.9.

Mol	Chain	Analysed	<RSRZ>	#RSRZ>2	OWAB(Å ²)	Q<0.9
1	A	121/183 (66%)	-0.61	2 (1%) 70 72	10, 17, 39, 71	0
1	B	120/183 (65%)	-0.67	2 (1%) 70 72	11, 19, 32, 65	0
1	C	121/183 (66%)	-0.59	2 (1%) 70 72	10, 18, 35, 100	0
1	D	120/183 (65%)	-0.68	2 (1%) 70 72	10, 18, 38, 83	0
All	All	482/732 (65%)	-0.64	8 (1%) 70 72	10, 18, 38, 100	0

All (8) RSRZ outliers are listed below:

Mol	Chain	Res	Type	RSRZ
1	C	133	VAL	7.3
1	A	133	VAL	6.4
1	C	134	LYS	6.3
1	D	135	PRO	3.3
1	A	134	LYS	3.1
1	B	134	LYS	2.5
1	B	135	PRO	2.5
1	D	133	VAL	2.4

6.2 Non-standard residues in protein, DNA, RNA chains [i](#)

There are no non-standard protein/DNA/RNA residues in this entry.

6.3 Carbohydrates [i](#)

There are no carbohydrates in this entry.

6.4 Ligands [i](#)

In the following table, the Atoms column lists the number of modelled atoms in the group and the number defined in the chemical component dictionary. The B-factors column lists the minimum, median, 95th percentile and maximum values of B factors of atoms in the group. The column labelled 'Q<0.9' lists the number of atoms with occupancy less than 0.9.

Mol	Type	Chain	Res	Atoms	RSCC	RSR	B-factors(\AA^2)	Q<0.9
2	BN7	A	201	20/20	0.91	0.12	5,13,24,30	0
2	BN7	D	201	20/20	0.93	0.12	7,12,23,29	0
2	BN7	C	201	20/20	0.95	0.10	9,15,31,42	0
2	BN7	B	201	20/20	0.96	0.10	10,16,28,30	0

6.5 Other polymers [i](#)

There are no such residues in this entry.