



# Full wwPDB X-ray Structure Validation Report ⓘ

Mar 8, 2018 – 09:49 pm GMT

PDB ID : 2VQO  
Title : Structure of HDAC4 catalytic domain with a gain-of-function mutation bound to a trifluoromethylketone inhibitor  
Authors : Bottomley, M.J.; Lo Surdo, P.; Di Giovine, P.; Cirillo, A.; Scarpelli, R.; Ferrigno, F.; Jones, P.; Neddermann, P.; De Francesco, R.; Steinkuhler, C.; Gallinari, P.; Carfi, A.  
Deposited on : 2008-03-18  
Resolution : 2.15 Å (reported)

This is a Full wwPDB X-ray Structure Validation Report for a publicly released PDB entry.

We welcome your comments at [validation@mail.wwpdb.org](mailto:validation@mail.wwpdb.org)

A user guide is available at

<https://www.wwpdb.org/validation/2017/XrayValidationReportHelp>

with specific help available everywhere you see the ⓘ symbol.

---

The following versions of software and data (see [references ⓘ](#)) were used in the production of this report:

MolProbity	:	4.02b-467
Mogul	:	1.7.3 (157068), CSD as539be (2018)
Xtriage (Phenix)	:	1.13
EDS	:	trunk30967
Percentile statistics	:	20171227.v01 (using entries in the PDB archive December 27th 2017)
Refmac	:	5.8.0158
CCP4	:	7.0 (Gargrove)
Ideal geometry (proteins)	:	Engh & Huber (2001)
Ideal geometry (DNA, RNA)	:	Parkinson et al. (1996)
Validation Pipeline (wwPDB-VP)	:	trunk30967

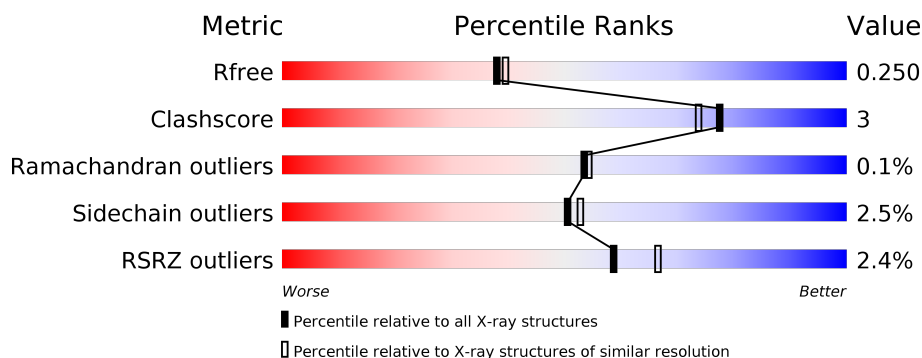
# 1 Overall quality at a glance

The following experimental techniques were used to determine the structure:

*X-RAY DIFFRACTION*

The reported resolution of this entry is 2.15 Å.

Percentile scores (ranging between 0-100) for global validation metrics of the entry are shown in the following graphic. The table shows the number of entries on which the scores are based.



Metric	Whole archive (#Entries)	Similar resolution (#Entries, resolution range(Å))
$R_{free}$	111664	1287 (2.16-2.16)
Clashscore	122126	1390 (2.16-2.16)
Ramachandran outliers	120053	1368 (2.16-2.16)
Sidechain outliers	120020	1367 (2.16-2.16)
RSRZ outliers	108989	1262 (2.16-2.16)

The table below summarises the geometric issues observed across the polymeric chains and their fit to the electron density. The red, orange, yellow and green segments on the lower bar indicate the fraction of residues that contain outliers for  $\geq 3$ , 2, 1 and 0 types of geometric quality criteria. A grey segment represents the fraction of residues that are not modelled. The numeric value for each fraction is indicated below the corresponding segment, with a dot representing fractions  $\leq 5\%$ . The upper red bar (where present) indicates the fraction of residues that have poor fit to the electron density. The numeric value is given above the bar.

Mol	Chain	Length	Quality of chain
1	A	413	<div> <div>3%</div> <div> <div></div> <div>80%</div> <div>7%</div> <div>13%</div> </div> </div>
1	B	413	<div> <div>%</div> <div> <div></div> <div>79%</div> <div>7%</div> <div>13%</div> </div> </div>

## 2 Entry composition [i](#)

There are 6 unique types of molecules in this entry. The entry contains 5790 atoms, of which 0 are hydrogens and 0 are deuteriums.

In the tables below, the ZeroOcc column contains the number of atoms modelled with zero occupancy, the AltConf column contains the number of residues with at least one atom in alternate conformation and the Trace column contains the number of residues modelled with at most 2 atoms.

- Molecule 1 is a protein called HISTONE DEACETYLASE 4.

Mol	Chain	Residues	Atoms					ZeroOcc	AltConf	Trace
1	A	360	Total	C	N	O	S	0	10	0
			2762	1751	473	521	17			
1	B	358	Total	C	N	O	S	0	3	1
			2697	1702	465	513	17			

There are 6 discrepancies between the modelled and reference sequences:

Chain	Residue	Modelled	Actual	Comment	Reference
A	25	ALA	CYS	engineered mutation	UNP P56524
A	56	ALA	CYS	engineered mutation	UNP P56524
A	332	TYR	HIS	engineered mutation	UNP P56524
B	25	ALA	CYS	engineered mutation	UNP P56524
B	56	ALA	CYS	engineered mutation	UNP P56524
B	332	TYR	HIS	engineered mutation	UNP P56524

- Molecule 2 is SULFATE ION (three-letter code: SO4) (formula: O<sub>4</sub>S).

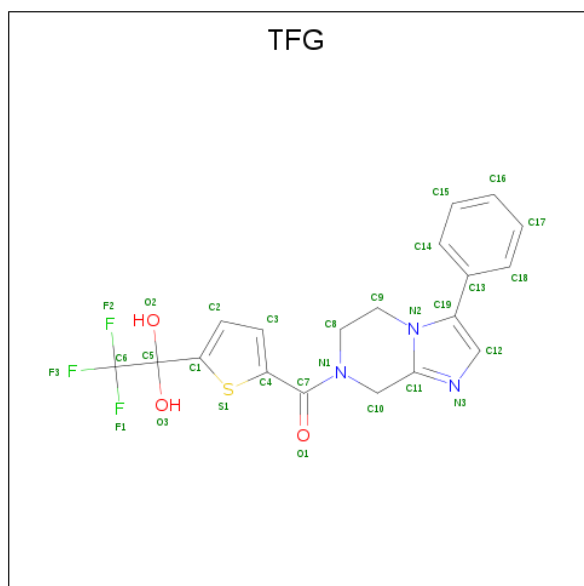


Mol	Chain	Residues	Atoms	ZeroOcc	AltConf
2	A	1	Total O S 5 4 1	0	0
2	A	1	Total O S 5 4 1	0	0
2	B	1	Total O S 5 4 1	0	0

- Molecule 3 is POTASSIUM ION (three-letter code: K) (formula: K).

Mol	Chain	Residues	Atoms	ZeroOcc	AltConf
3	B	2	Total K 2 2	0	0
3	A	2	Total K 2 2	0	0

- Molecule 4 is 2,2,2-TRIFLUORO-1-{5-[(3-PHENYL-5,6-DIHYDROIMIDAZO[1,2-A]PYR AZIN-7(8H)-YL)CARBONYL]THIOPHEN-2-YL}ETHANE-1,1-DIOL (three-letter code: TFG) (formula: C<sub>19</sub>H<sub>16</sub>F<sub>3</sub>N<sub>3</sub>O<sub>3</sub>S).



Mol	Chain	Residues	Atoms	ZeroOcc	AltConf
4	A	1	Total C F N O S 29 19 3 3 1	0	0
4	B	1	Total C F N O S 29 19 3 3 1	0	0

- Molecule 5 is ZINC ION (three-letter code: ZN) (formula: Zn).

Mol	Chain	Residues	Atoms		ZeroOcc	AltConf
5	B	1	Total 1	Zn 1	0	0
5	A	1	Total 1	Zn 1	0	0

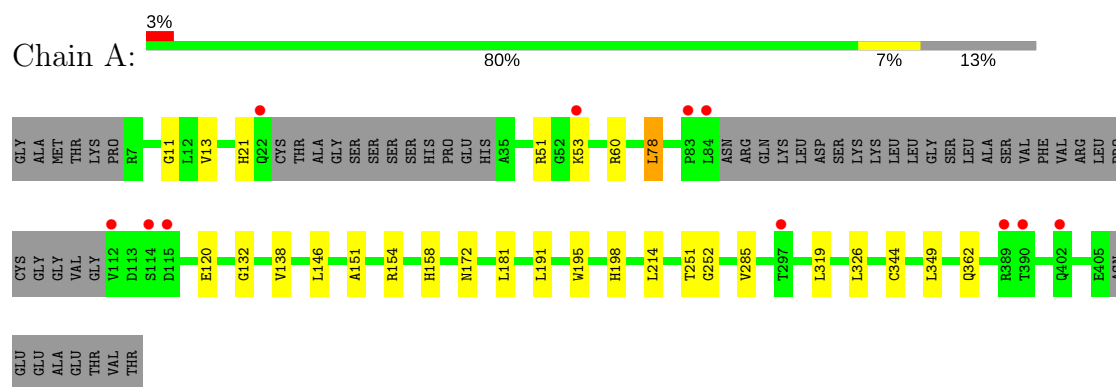
- Molecule 6 is water.

Mol	Chain	Residues	Atoms		ZeroOcc	AltConf
6	A	125	Total 125	O 125	0	0
6	B	127	Total 127	O 127	0	0

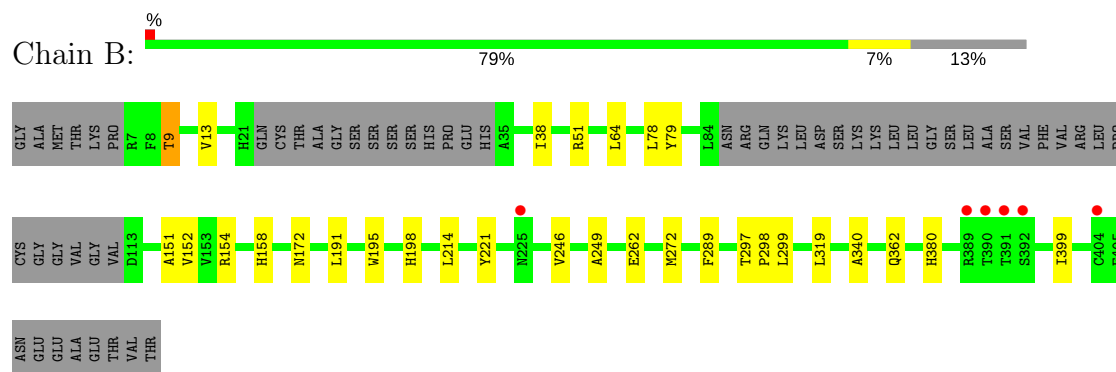
### 3 Residue-property plots [i](#)

These plots are drawn for all protein, RNA and DNA chains in the entry. The first graphic for a chain summarises the proportions of the various outlier classes displayed in the second graphic. The second graphic shows the sequence view annotated by issues in geometry and electron density. Residues are color-coded according to the number of geometric quality criteria for which they contain at least one outlier: green = 0, yellow = 1, orange = 2 and red = 3 or more. A red dot above a residue indicates a poor fit to the electron density ( $RSRZ > 2$ ). Stretches of 2 or more consecutive residues without any outlier are shown as a green connector. Residues present in the sample, but not in the model, are shown in grey.

#### • Molecule 1: HISTONE DEACETYLASE 4



#### • Molecule 1: HISTONE DEACETYLASE 4



## 4 Data and refinement statistics

Property	Value	Source
Space group	P 1 21 1	Depositor
Cell constants a, b, c, $\alpha$ , $\beta$ , $\gamma$	86.09Å 70.97Å 88.33Å 90.00° 108.11° 90.00°	Depositor
Resolution (Å)	40.00 – 2.15 14.99 – 2.15	Depositor EDS
% Data completeness (in resolution range)	97.2 (40.00-2.15) 97.5 (14.99-2.15)	Depositor EDS
$R_{merge}$	0.13	Depositor
$R_{sym}$	(Not available)	Depositor
$\langle I/\sigma(I) \rangle$ <sup>1</sup>	1.54 (at 2.16Å)	Xtriage
Refinement program	REFMAC 5.2.0019	Depositor
R, $R_{free}$	0.210 , 0.250 0.213 , 0.250	Depositor DCC
$R_{free}$ test set	2719 reflections (5.06%)	wwPDB-VP
Wilson B-factor (Å <sup>2</sup> )	32.3	Xtriage
Anisotropy	0.184	Xtriage
Bulk solvent $k_{sol}$ (e/Å <sup>3</sup> ), $B_{sol}$ (Å <sup>2</sup> )	0.37 , 26.9	EDS
L-test for twinning <sup>2</sup>	$\langle  L  \rangle = 0.48$ , $\langle L^2 \rangle = 0.31$	Xtriage
Estimated twinning fraction	0.196 for l,-k,h	Xtriage
$F_o, F_c$ correlation	0.95	EDS
Total number of atoms	5790	wwPDB-VP
Average B, all atoms (Å <sup>2</sup> )	34.0	wwPDB-VP

Xtriage's analysis on translational NCS is as follows: *The largest off-origin peak in the Patterson function is 4.73% of the height of the origin peak. No significant pseudotranslation is detected.*

<sup>1</sup>Intensities estimated from amplitudes.

<sup>2</sup>Theoretical values of  $\langle |L| \rangle$ ,  $\langle L^2 \rangle$  for acentric reflections are 0.5, 0.333 respectively for untwinned datasets, and 0.375, 0.2 for perfectly twinned datasets.

## 5 Model quality [i](#)

### 5.1 Standard geometry [i](#)

Bond lengths and bond angles in the following residue types are not validated in this section: ZN, K, TFG, SO4

The Z score for a bond length (or angle) is the number of standard deviations the observed value is removed from the expected value. A bond length (or angle) with  $|Z| > 5$  is considered an outlier worth inspection. RMSZ is the root-mean-square of all Z scores of the bond lengths (or angles).

Mol	Chain	Bond lengths		Bond angles	
		RMSZ	$\# Z  > 5$	RMSZ	$\# Z  > 5$
1	A	0.36	0/2848	0.50	0/3866
1	B	0.36	0/2763	0.51	1/3751 (0.0%)
All	All	0.36	0/5611	0.51	1/7617 (0.0%)

There are no bond length outliers.

All (1) bond angle outliers are listed below:

Mol	Chain	Res	Type	Atoms	Z	Observed(°)	Ideal(°)
1	B	297	THR	N-CA-C	5.08	124.72	111.00

There are no chirality outliers.

There are no planarity outliers.

### 5.2 Too-close contacts [i](#)

In the following table, the Non-H and H(model) columns list the number of non-hydrogen atoms and hydrogen atoms in the chain respectively. The H(added) column lists the number of hydrogen atoms added and optimized by MolProbity. The Clashes column lists the number of clashes within the asymmetric unit, whereas Symm-Clashes lists symmetry related clashes.

Mol	Chain	Non-H	H(model)	H(added)	Clashes	Symm-Clashes
1	A	2762	0	2723	16	0
1	B	2697	0	2633	17	0
2	A	10	0	0	0	0
2	B	5	0	0	0	0
3	A	2	0	0	0	0
3	B	2	0	0	0	0
4	A	29	0	14	2	0
4	B	29	0	14	6	0

*Continued on next page...*



*Continued from previous page...*

Mol	Chain	Non-H	H(model)	H(added)	Clashes	Symm-Clashes
5	A	1	0	0	0	0
5	B	1	0	0	0	0
6	A	125	0	0	5	0
6	B	127	0	0	2	0
All	All	5790	0	5384	35	0

The all-atom clashscore is defined as the number of clashes found per 1000 atoms (including hydrogen atoms). The all-atom clashscore for this structure is 3.

All (35) close contacts within the same asymmetric unit are listed below, sorted by their clash magnitude.

Atom-1	Atom-2	Interatomic distance (Å)	Clash overlap (Å)
1:A:326:LEU:HD22	6:A:2094:HOH:O	1.25	1.32
1:A:319:LEU:HD22	6:A:2096:HOH:O	1.80	0.82
1:A:78:LEU:HD21	4:B:1409:TFG:H9C1	1.74	0.69
1:B:362:GLN:HG2	1:B:399:ILE:HD12	1.77	0.66
1:B:78:LEU:HD12	1:B:79:TYR:CE1	2.32	0.65
1:B:272:MET:CE	1:B:319:LEU:HD11	2.30	0.61
1:B:272:MET:HE3	1:B:319:LEU:HD11	1.83	0.59
1:B:246:VAL:HG22	1:B:380:HIS:CE1	2.41	0.56
1:A:191:LEU:HD13	1:A:214:LEU:HD23	1.89	0.55
1:B:262:GLU:OE1	6:B:2081:HOH:O	2.18	0.54
1:B:299:LEU:HD21	4:B:1409:TFG:H9C2	1.89	0.53
1:A:285:VAL:HB	1:A:326:LEU:HG	1.90	0.53
4:A:1410:TFG:H9C1	1:B:78:LEU:HD11	1.91	0.53
1:B:9:THR:HG21	6:B:2012:HOH:O	2.10	0.52
4:B:1409:TFG:H18	4:B:1409:TFG:C9	2.40	0.51
1:A:138:VAL:CG1	1:A:181:LEU:HD11	2.41	0.51
1:B:78:LEU:HD12	1:B:79:TYR:CZ	2.48	0.49
1:A:11:GLY:HA3	1:A:146:LEU:HD13	1.95	0.48
1:A:362:GLN:CD	6:A:2109:HOH:O	2.52	0.47
1:B:191:LEU:HD13	1:B:214:LEU:HD23	1.95	0.47
1:A:78:LEU:CD2	4:B:1409:TFG:H9C1	2.41	0.47
1:A:53[A]:LYS:HG3	1:A:349:LEU:HD22	1.97	0.47
1:A:251[A]:THR:HG22	1:A:252:GLY:N	2.30	0.46
1:A:60:ARG:O	1:A:132:GLY:HA3	2.15	0.46
1:A:198:HIS:CE1	4:A:1410:TFG:S1	3.10	0.45
1:B:272:MET:HE1	1:B:319:LEU:HD11	1.98	0.45
1:B:198:HIS:CE1	4:B:1409:TFG:S1	3.09	0.44
1:A:13:VAL:HG12	1:A:151:ALA:HA	2.00	0.43
1:B:221:TYR:CB	1:B:249:ALA:HB1	2.49	0.43

*Continued on next page...*

*Continued from previous page...*

Atom-1	Atom-2	Interatomic distance (Å)	Clash overlap (Å)
1:B:13:VAL:HG12	1:B:151:ALA:HA	1.99	0.42
1:B:38:ILE:HB	1:B:152:VAL:HG12	2.02	0.42
1:A:344:CYS:HB3	6:A:2094:HOH:O	2.19	0.41
1:A:21:HIS:NE2	6:A:2004:HOH:O	2.23	0.41
4:B:1409:TFG:C18	4:B:1409:TFG:C9	2.97	0.41
1:B:289:PHE:CD2	1:B:340:ALA:HB1	2.56	0.40

There are no symmetry-related clashes.

## 5.3 Torsion angles [i](#)

### 5.3.1 Protein backbone [i](#)

In the following table, the Percentiles column shows the percent Ramachandran outliers of the chain as a percentile score with respect to all X-ray entries followed by that with respect to entries of similar resolution.

The Analysed column shows the number of residues for which the backbone conformation was analysed, and the total number of residues.

Mol	Chain	Analysed	Favoured	Allowed	Outliers	Percentiles	
1	A	363/413 (88%)	353 (97%)	10 (3%)	0	100	100
1	B	355/413 (86%)	346 (98%)	8 (2%)	1 (0%)	43	39
All	All	718/826 (87%)	699 (97%)	18 (2%)	1 (0%)	53	54

All (1) Ramachandran outliers are listed below:

Mol	Chain	Res	Type
1	B	298	PRO

### 5.3.2 Protein sidechains [i](#)

In the following table, the Percentiles column shows the percent sidechain outliers of the chain as a percentile score with respect to all X-ray entries followed by that with respect to entries of similar resolution.

The Analysed column shows the number of residues for which the sidechain conformation was analysed, and the total number of residues.

Mol	Chain	Analysed	Rotameric	Outliers	Percentiles	
1	A	295/333 (89%)	288 (98%)	7 (2%)	52	54
1	B	285/333 (86%)	278 (98%)	7 (2%)	50	53
All	All	580/666 (87%)	566 (98%)	14 (2%)	50	54

All (14) residues with a non-rotameric sidechain are listed below:

Mol	Chain	Res	Type
1	A	51	ARG
1	A	78	LEU
1	A	120	GLU
1	A	154	ARG
1	A	158	HIS
1	A	172	ASN
1	A	195	TRP
1	B	9	THR
1	B	51	ARG
1	B	64	LEU
1	B	154	ARG
1	B	158	HIS
1	B	172	ASN
1	B	195	TRP

Some sidechains can be flipped to improve hydrogen bonding and reduce clashes. All (13) such sidechains are listed below:

Mol	Chain	Res	Type
1	A	22	GLN
1	A	172	ASN
1	A	204	GLN
1	A	245	ASN
1	A	247	ASN
1	A	368	ASN
1	B	172	ASN
1	B	204	GLN
1	B	245	ASN
1	B	247	ASN
1	B	303	ASN
1	B	362	GLN
1	B	402	GLN

### 5.3.3 RNA ⓘ

There are no RNA molecules in this entry.

## 5.4 Non-standard residues in protein, DNA, RNA chains ⓘ

There are no non-standard protein/DNA/RNA residues in this entry.

## 5.5 Carbohydrates ⓘ

There are no carbohydrates in this entry.

## 5.6 Ligand geometry ⓘ

Of 11 ligands modelled in this entry, 6 are monoatomic - leaving 5 for Mogul analysis.

In the following table, the Counts columns list the number of bonds (or angles) for which Mogul statistics could be retrieved, the number of bonds (or angles) that are observed in the model and the number of bonds (or angles) that are defined in the Chemical Component Dictionary. The Link column lists molecule types, if any, to which the group is linked. The Z score for a bond length (or angle) is the number of standard deviations the observed value is removed from the expected value. A bond length (or angle) with  $|Z| > 2$  is considered an outlier worth inspection. RMSZ is the root-mean-square of all Z scores of the bond lengths (or angles).

Mol	Type	Chain	Res	Link	Bond lengths			Bond angles		
					Counts	RMSZ	# $ Z  > 2$	Counts	RMSZ	# $ Z  > 2$
2	SO4	A	1406	-	4,4,4	0.23	0	6,6,6	0.14	0
2	SO4	A	1407	-	4,4,4	0.16	0	6,6,6	0.12	0
4	TFG	A	1410	5	25,32,32	1.96	6 (24%)	25,49,49	1.60	6 (24%)
2	SO4	B	1406	-	4,4,4	0.17	0	6,6,6	0.12	0
4	TFG	B	1409	5	25,32,32	1.94	6 (24%)	25,49,49	1.78	5 (20%)

In the following table, the Chirals column lists the number of chiral outliers, the number of chiral centers analysed, the number of these observed in the model and the number defined in the Chemical Component Dictionary. Similar counts are reported in the Torsion and Rings columns. '-' means no outliers of that kind were identified.

Mol	Type	Chain	Res	Link	Chirals	Torsions	Rings
2	SO4	A	1406	-	-	0/0/0/0	0/0/0/0
2	SO4	A	1407	-	-	0/0/0/0	0/0/0/0
4	TFG	A	1410	5	-	0/17/36/36	0/3/4/4
2	SO4	B	1406	-	-	0/0/0/0	0/0/0/0
4	TFG	B	1409	5	-	0/17/36/36	0/3/4/4

All (12) bond length outliers are listed below:

Mol	Chain	Res	Type	Atoms	Z	Observed(Å)	Ideal(Å)
4	A	1410	TFG	C13-C19	-4.46	1.40	1.48
4	B	1409	TFG	C13-C19	-4.34	1.40	1.48
4	B	1409	TFG	C1-S1	-4.24	1.66	1.74
4	A	1410	TFG	C1-S1	-4.15	1.66	1.74
4	A	1410	TFG	C12-C19	-2.80	1.33	1.38
4	B	1409	TFG	C12-C19	-2.35	1.34	1.38
4	A	1410	TFG	C10-C11	2.15	1.55	1.51
4	B	1409	TFG	C10-C11	2.21	1.55	1.51
4	B	1409	TFG	O2-C5	3.06	1.43	1.40
4	A	1410	TFG	O2-C5	4.03	1.44	1.40
4	A	1410	TFG	O3-C5	4.78	1.45	1.40
4	B	1409	TFG	O3-C5	5.37	1.45	1.40

All (11) bond angle outliers are listed below:

Mol	Chain	Res	Type	Atoms	Z	Observed(°)	Ideal(°)
4	B	1409	TFG	O1-C7-N1	-4.28	115.05	122.35
4	A	1410	TFG	O1-C7-N1	-3.65	116.13	122.35
4	A	1410	TFG	C11-C10-N1	-2.85	105.85	111.24
4	B	1409	TFG	C11-C10-N1	-2.38	106.73	111.24
4	B	1409	TFG	C8-N1-C7	-2.08	116.05	122.78
4	A	1410	TFG	C12-C19-C13	2.17	130.95	128.32
4	A	1410	TFG	O2-C5-C6	2.30	111.93	107.52
4	A	1410	TFG	C6-C5-C1	3.02	113.66	109.69
4	A	1410	TFG	C4-C7-N1	3.21	128.07	119.84
4	B	1409	TFG	C4-C7-N1	3.37	128.47	119.84
4	B	1409	TFG	C6-C5-C1	4.90	116.13	109.69

There are no chirality outliers.

There are no torsion outliers.

There are no ring outliers.

2 monomers are involved in 8 short contacts:

Mol	Chain	Res	Type	Clashes	Symm-Clashes
4	A	1410	TFG	2	0
4	B	1409	TFG	6	0

## 5.7 Other polymers [i](#)

There are no such residues in this entry.

## 5.8 Polymer linkage issues [i](#)

There are no chain breaks in this entry.

## 6 Fit of model and data [i](#)

### 6.1 Protein, DNA and RNA chains [i](#)

In the following table, the column labelled ‘#RSRZ > 2’ contains the number (and percentage) of RSRZ outliers, followed by percent RSRZ outliers for the chain as percentile scores relative to all X-ray entries and entries of similar resolution. The OWAB column contains the minimum, median, 95<sup>th</sup> percentile and maximum values of the occupancy-weighted average B-factor per residue. The column labelled ‘Q < 0.9’ lists the number of (and percentage) of residues with an average occupancy less than 0.9.

Mol	Chain	Analysed	<RSRZ>	#RSRZ>2	OWAB(Å <sup>2</sup> )	Q<0.9
1	A	360/413 (87%)	-0.02	11 (3%) 49 57	23, 33, 50, 58	0
1	B	358/413 (86%)	-0.10	6 (1%) 70 75	23, 33, 48, 58	0
All	All	718/826 (86%)	-0.06	17 (2%) 59 66	23, 33, 49, 58	0

All (17) RSRZ outliers are listed below:

Mol	Chain	Res	Type	RSRZ
1	A	84	LEU	5.7
1	A	112	VAL	4.1
1	A	390	THR	3.8
1	A	389	ARG	3.7
1	B	390	THR	3.4
1	A	83	PRO	2.7
1	A	22	GLN	2.6
1	B	391	THR	2.5
1	A	402[A]	GLN	2.4
1	A	114	SER	2.4
1	B	404	CYS	2.4
1	A	115	ASP	2.4
1	B	225	ASN	2.3
1	A	297	THR	2.2
1	B	392	SER	2.1
1	A	53[A]	LYS	2.1
1	B	389	ARG	2.0

### 6.2 Non-standard residues in protein, DNA, RNA chains [i](#)

There are no non-standard protein/DNA/RNA residues in this entry.

### 6.3 Carbohydrates [i](#)

There are no carbohydrates in this entry.

### 6.4 Ligands [i](#)

In the following table, the Atoms column lists the number of modelled atoms in the group and the number defined in the chemical component dictionary. The B-factors column lists the minimum, median, 95<sup>th</sup> percentile and maximum values of B factors of atoms in the group. The column labelled 'Q< 0.9' lists the number of atoms with occupancy less than 0.9.

Mol	Type	Chain	Res	Atoms	RSCC	RSR	B-factors( $\text{\AA}^2$ )	Q<0.9
4	TFG	B	1409	29/29	0.96	0.09	26,31,33,33	0
3	K	A	1409	1/1	0.96	0.08	59,59,59,59	0
4	TFG	A	1410	29/29	0.96	0.09	27,28,33,34	0
2	SO4	A	1407	5/5	0.98	0.06	52,52,52,52	0
3	K	B	1408	1/1	0.98	0.09	59,59,59,59	0
2	SO4	A	1406	5/5	0.99	0.09	35,35,36,36	0
2	SO4	B	1406	5/5	0.99	0.09	30,31,32,32	0
5	ZN	B	1410	1/1	1.00	0.17	28,28,28,28	0
5	ZN	A	1411	1/1	1.00	0.16	25,25,25,25	0
3	K	B	1407	1/1	1.00	0.08	32,32,32,32	0
3	K	A	1408	1/1	1.00	0.08	31,31,31,31	0

### 6.5 Other polymers [i](#)

There are no such residues in this entry.