



Full wwPDB X-ray Structure Validation Report ⓘ

Mar 13, 2018 – 09:34 pm GMT

PDB ID : 3W2L
Title : Structure of Trypanosoma cruzi dihydroorotate dehydrogenase in complex with MII-3-169
Authors : Inaoka, D.K.; Iida, M.; Tabuchi, T.; Lee, N.; Matsuoka, S.; Shiba, T.; Sakamoto, K.; Suzuki, S.; Balogun, E.O.; Nara, T.; Aoki, T.; Inoue, M.; Honma, T.; Tanaka, A.; Harada, S.; Kita, K.
Deposited on : 2012-11-29
Resolution : 1.64 Å(reported)

This is a Full wwPDB X-ray Structure Validation Report for a publicly released PDB entry.

We welcome your comments at validation@mail.wwpdb.org

A user guide is available at

<https://www.wwpdb.org/validation/2017/XrayValidationReportHelp>

with specific help available everywhere you see the ⓘ symbol.

The following versions of software and data (see [references ⓘ](#)) were used in the production of this report:

MolProbity : 4.02b-467
Mogul : 1.7.3 (157068), CSD as539be (2018)
Xtriage (Phenix) : 1.13
EDS : trunk31020
Percentile statistics : 20171227.v01 (using entries in the PDB archive December 27th 2017)
Refmac : 5.8.0158
CCP4 : 7.0 (Gargrove)
Ideal geometry (proteins) : Engh & Huber (2001)
Ideal geometry (DNA, RNA) : Parkinson et al. (1996)
Validation Pipeline (wwPDB-VP) : trunk31020

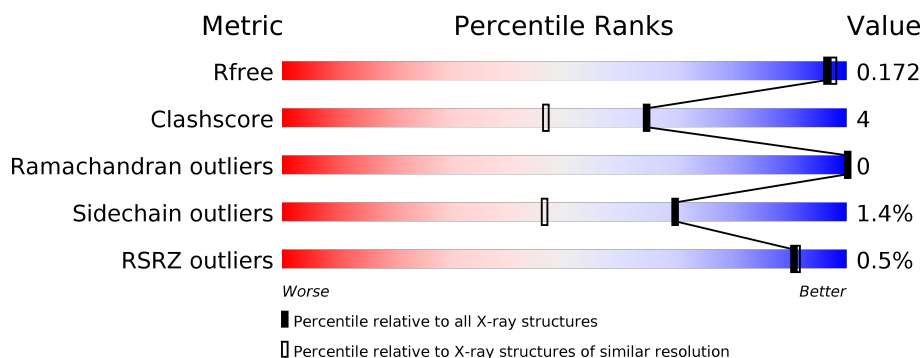
1 Overall quality at a glance

The following experimental techniques were used to determine the structure:

X-RAY DIFFRACTION

The reported resolution of this entry is 1.64 Å.

Percentile scores (ranging between 0-100) for global validation metrics of the entry are shown in the following graphic. The table shows the number of entries on which the scores are based.



Metric	Whole archive (#Entries)	Similar resolution (#Entries, resolution range(Å))
R_{free}	111664	2539 (1.66-1.62)
Clashscore	122126	2672 (1.66-1.62)
Ramachandran outliers	120053	2629 (1.66-1.62)
Sidechain outliers	120020	2629 (1.66-1.62)
RSRZ outliers	108989	2498 (1.66-1.62)

The table below summarises the geometric issues observed across the polymeric chains and their fit to the electron density. The red, orange, yellow and green segments on the lower bar indicate the fraction of residues that contain outliers for ≥ 3 , 2, 1 and 0 types of geometric quality criteria. A grey segment represents the fraction of residues that are not modelled. The numeric value for each fraction is indicated below the corresponding segment, with a dot representing fractions $\leq 5\%$. The upper red bar (where present) indicates the fraction of residues that have poor fit to the electron density. The numeric value is given above the bar.

Mol	Chain	Length	Quality of chain
1	A	313	
1	B	313	

The following table lists non-polymeric compounds, carbohydrate monomers and non-standard residues in protein, DNA, RNA chains that are outliers for geometric or electron-density-fit criteria:

Mol	Type	Chain	Res	Chirality	Geometry	Clashes	Electron density
3	GOL	B	410	-	-	X	-

2 Entry composition [i](#)

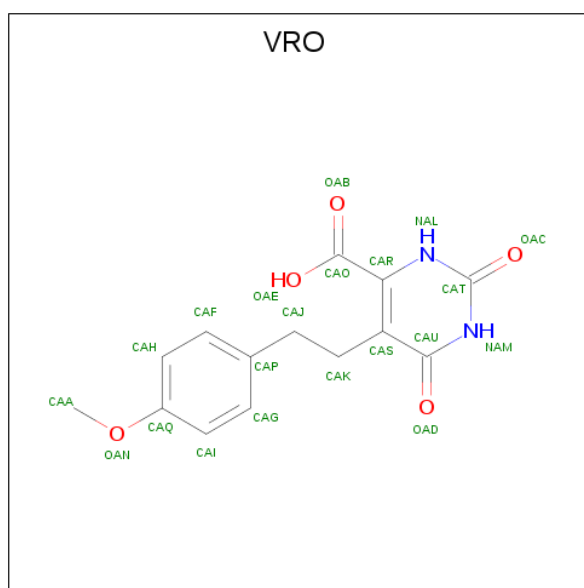
There are 6 unique types of molecules in this entry. The entry contains 5704 atoms, of which 0 are hydrogens and 0 are deuteriums.

In the tables below, the ZeroOcc column contains the number of atoms modelled with zero occupancy, the AltConf column contains the number of residues with at least one atom in alternate conformation and the Trace column contains the number of residues modelled with at most 2 atoms.

- Molecule 1 is a protein called Dihydroorotate dehydrogenase (fumarate).

Mol	Chain	Residues	Atoms					ZeroOcc	AltConf	Trace
1	A	313	Total	C	N	O	S	0	0	0
			2388	1530	396	444	18			
1	B	313	Total	C	N	O	S	0	0	0
			2388	1530	396	444	18			

- Molecule 2 is 5-[2-(4-methoxyphenyl)ethyl]-2,6-dioxo-1,2,3,6-tetrahydropyrimidine-4-carboxylic acid (three-letter code: VRO) (formula: C₁₄H₁₄N₂O₅).



Mol	Chain	Residues	Atoms				ZeroOcc	AltConf
2	A	1	Total	C	N	O	0	0
			21	14	2	5		
2	B	1	Total	C	N	O	0	0
			21	14	2	5		

- Molecule 3 is GLYCEROL (three-letter code: GOL) (formula: C₃H₈O₃).



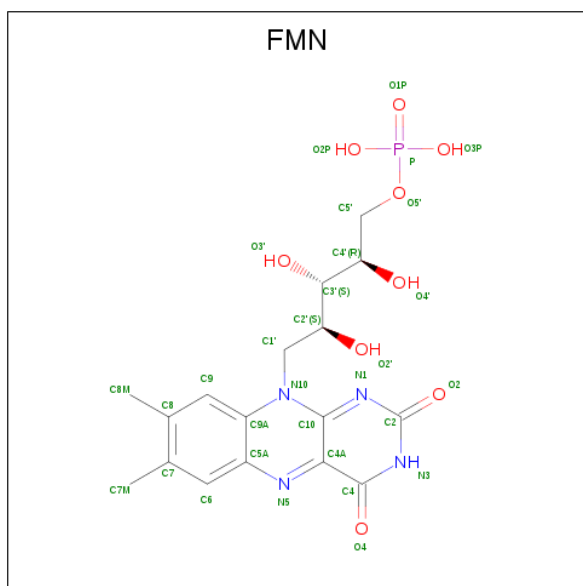
Mol	Chain	Residues	Atoms			ZeroOcc	AltConf
3	A	1	Total	C	O	0	0
			6	3	3		
3	A	1	Total	C	O	0	0
			6	3	3		
3	A	1	Total	C	O	0	0
			6	3	3		
3	A	1	Total	C	O	0	0
			6	3	3		
3	A	1	Total	C	O	0	0
			6	3	3		
3	A	1	Total	C	O	0	0
			6	3	3		
3	A	1	Total	C	O	0	0
			6	3	3		
3	A	1	Total	C	O	0	0
			6	3	3		
3	B	1	Total	C	O	0	0
			6	3	3		
3	B	1	Total	C	O	0	0
			6	3	3		
3	B	1	Total	C	O	0	0
			6	3	3		

Continued on next page...

Continued from previous page...

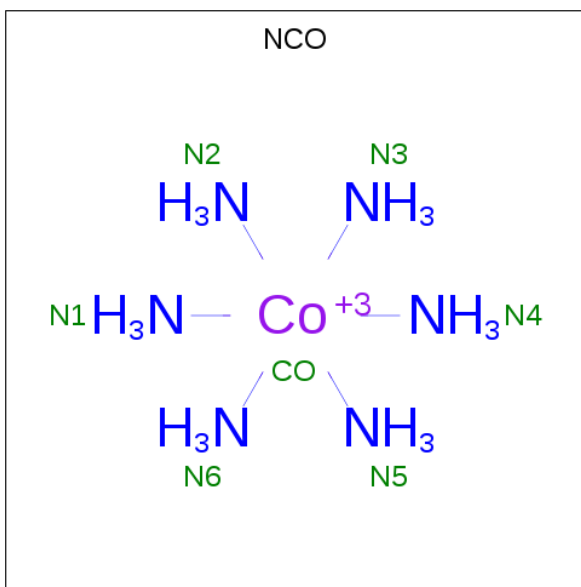
[illegible]

- Molecule 4 is FLAVIN MONONUCLEOTIDE (three-letter code: FMN) (formula: $\text{C}_{17}\text{H}_{21}\text{N}_4\text{O}_9\text{P}$).



Mol	Chain	Residues	Atoms					ZeroOcc	AltConf
4	A	1	Total 31	C 17	N 4	O 9	P 1	0	0
4	B	1	Total 31	C 17	N 4	O 9	P 1	0	0

- Molecule 5 is COBALT HEXAMMINE(III) (three-letter code: NCO) (formula: $\text{CoH}_{18}\text{N}_6$).



Mol	Chain	Residues	Atoms			ZeroOcc	AltConf
5	A	1	Total	Co	N	0	0
			7	1	6		

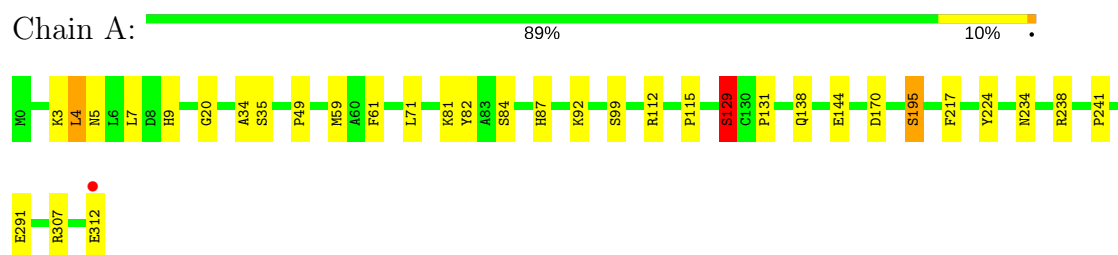
- Molecule 6 is water.

Mol	Chain	Residues	Atoms		ZeroOcc	AltConf
6	A	348	Total	O	0	0
			348	348		
6	B	337	Total	O	0	0
			337	337		

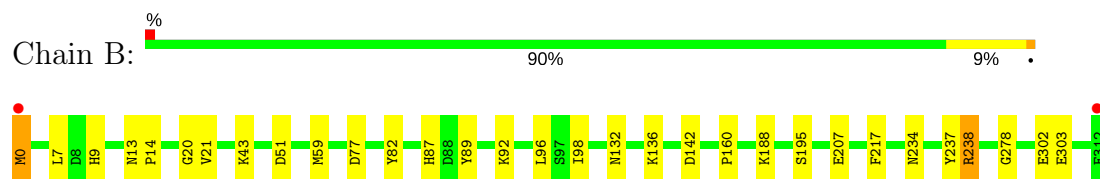
3 Residue-property plots [i](#)

These plots are drawn for all protein, RNA and DNA chains in the entry. The first graphic for a chain summarises the proportions of the various outlier classes displayed in the second graphic. The second graphic shows the sequence view annotated by issues in geometry and electron density. Residues are color-coded according to the number of geometric quality criteria for which they contain at least one outlier: green = 0, yellow = 1, orange = 2 and red = 3 or more. A red dot above a residue indicates a poor fit to the electron density ($RSRZ > 2$). Stretches of 2 or more consecutive residues without any outlier are shown as a green connector. Residues present in the sample, but not in the model, are shown in grey.

- Molecule 1: Dihydroorotate dehydrogenase (fumarate)



- Molecule 1: Dihydroorotate dehydrogenase (fumarate)



4 Data and refinement statistics

Property	Value	Source
Space group	P 21 21 21	Depositor
Cell constants a, b, c, α , β , γ	67.94Å 71.98Å 129.27Å 90.00° 90.00° 90.00°	Depositor
Resolution (Å)	34.67 – 1.64 34.67 – 1.64	Depositor EDS
% Data completeness (in resolution range)	87.1 (34.67-1.64) 87.1 (34.67-1.64)	Depositor EDS
R_{merge}	0.06	Depositor
R_{sym}	(Not available)	Depositor
$\langle I/\sigma(I) \rangle$ ¹	4.00 (at 1.64Å)	Xtriage
Refinement program	REFMAC 5.7.0029	Depositor
R, R_{free}	0.134 , 0.170 0.137 , 0.172	Depositor DCC
R_{free} test set	3461 reflections (5.06%)	wwPDB-VP
Wilson B-factor (Å ²)	12.2	Xtriage
Anisotropy	0.064	Xtriage
Bulk solvent k_{sol} (e/Å ³), B_{sol} (Å ²)	0.39 , 53.3	EDS
L-test for twinning ²	$\langle L \rangle = 0.49$, $\langle L^2 \rangle = 0.33$	Xtriage
Estimated twinning fraction	No twinning to report.	Xtriage
F_o, F_c correlation	0.97	EDS
Total number of atoms	5704	wwPDB-VP
Average B, all atoms (Å ²)	15.0	wwPDB-VP

Xtriage's analysis on translational NCS is as follows: *The analyses of the Patterson function reveals a significant off-origin peak that is 27.24 % of the origin peak, indicating pseudo-translational symmetry. The chance of finding a peak of this or larger height randomly in a structure without pseudo-translational symmetry is equal to 2.2767e-03. The detected translational NCS is most likely also responsible for the elevated intensity ratio.*

¹Intensities estimated from amplitudes.

²Theoretical values of $\langle |L| \rangle$, $\langle L^2 \rangle$ for acentric reflections are 0.5, 0.333 respectively for untwinned datasets, and 0.375, 0.2 for perfectly twinned datasets.

5 Model quality

5.1 Standard geometry

Bond lengths and bond angles in the following residue types are not validated in this section: FMN, GOL, VRO, NCO

The Z score for a bond length (or angle) is the number of standard deviations the observed value is removed from the expected value. A bond length (or angle) with $|Z| > 5$ is considered an outlier worth inspection. RMSZ is the root-mean-square of all Z scores of the bond lengths (or angles).

Mol	Chain	Bond lengths		Bond angles	
		RMSZ	# Z >5	RMSZ	# Z >5
1	A	1.29	10/2440 (0.4%)	1.07	6/3305 (0.2%)
1	B	1.20	8/2440 (0.3%)	1.05	4/3305 (0.1%)
All	All	1.25	18/4880 (0.4%)	1.06	10/6610 (0.2%)

All (18) bond length outliers are listed below:

Mol	Chain	Res	Type	Atoms	Z	Observed(Å)	Ideal(Å)
1	A	195	SER	CB-OG	-7.25	1.32	1.42
1	A	49	PRO	N-CD	6.79	1.57	1.47
1	A	84	SER	CB-OG	-6.41	1.33	1.42
1	A	131	PRO	N-CD	6.10	1.56	1.47
1	B	303	GLU	CD-OE2	-5.87	1.19	1.25
1	A	144	GLU	CD-OE2	5.86	1.32	1.25
1	A	99	SER	CB-OG	-5.77	1.34	1.42
1	B	21	VAL	C-O	-5.58	1.12	1.23
1	B	142	ASP	C-O	-5.58	1.12	1.23
1	A	129	SER	CB-OG	5.53	1.49	1.42
1	A	115	PRO	N-CD	5.44	1.55	1.47
1	B	237	TYR	CE1-CZ	-5.39	1.31	1.38
1	B	238	ARG	CZ-NH2	5.34	1.40	1.33
1	A	224	TYR	CE1-CZ	-5.32	1.31	1.38
1	B	207	GLU	CD-OE1	-5.29	1.19	1.25
1	A	35	SER	CB-OG	5.25	1.49	1.42
1	B	278	GLY	N-CA	-5.13	1.38	1.46
1	B	237	TYR	CB-CG	-5.12	1.44	1.51

All (10) bond angle outliers are listed below:

Mol	Chain	Res	Type	Atoms	Z	Observed(°)	Ideal(°)
1	A	112	ARG	NE-CZ-NH2	-7.61	116.49	120.30

Continued on next page...

Continued from previous page...

Mol	Chain	Res	Type	Atoms	Z	Observed(°)	Ideal(°)
1	A	3	LYS	CD-CE-NZ	6.91	127.60	111.70
1	B	77	ASP	CB-CG-OD2	-5.97	112.92	118.30
1	B	51	ASP	CB-CG-OD2	-5.66	113.21	118.30
1	A	112	ARG	NE-CZ-NH1	5.47	123.04	120.30
1	B	77	ASP	CB-CG-OD1	5.37	123.13	118.30
1	B	142	ASP	CB-CG-OD2	-5.30	113.53	118.30
1	A	170	ASP	CB-CG-OD1	5.29	123.07	118.30
1	A	4	LEU	CA-CB-CG	5.21	127.27	115.30
1	A	71	LEU	CB-CG-CD2	-5.04	102.44	111.00

There are no chirality outliers.

There are no planarity outliers.

5.2 Too-close contacts ⓘ

In the following table, the Non-H and H(model) columns list the number of non-hydrogen atoms and hydrogen atoms in the chain respectively. The H(added) column lists the number of hydrogen atoms added and optimized by MolProbity. The Clashes column lists the number of clashes within the asymmetric unit, whereas Symm-Clashes lists symmetry related clashes.

Mol	Chain	Non-H	H(model)	H(added)	Clashes	Symm-Clashes
1	A	2388	0	2391	18	0
1	B	2388	0	2391	22	0
2	A	21	0	13	0	0
2	B	21	0	13	2	0
3	A	66	0	88	6	0
3	B	66	0	88	10	0
4	A	31	0	19	1	0
4	B	31	0	19	1	0
5	A	7	0	0	0	0
6	A	348	0	0	5	0
6	B	337	0	0	5	0
All	All	5704	0	5022	45	0

The all-atom clashscore is defined as the number of clashes found per 1000 atoms (including hydrogen atoms). The all-atom clashscore for this structure is 4.

All (45) close contacts within the same asymmetric unit are listed below, sorted by their clash magnitude.

Atom-1	Atom-2	Interatomic distance (Å)	Clash overlap (Å)
1:A:59:MET:HE3	6:A:626:HOH:O	1.82	0.79
2:B:401:VRO:H13	3:B:403:GOL:H31	1.72	0.71
1:B:9:HIS:CE1	3:B:410:GOL:H11	2.26	0.71
1:A:129:SER:HA	1:A:138:GLN:OE1	1.93	0.69
1:B:234:ASN:HD21	1:B:238:ARG:HE	1.39	0.68
1:A:61:PHE:CE1	3:A:407:GOL:H32	2.31	0.64
1:B:9:HIS:CE1	3:B:410:GOL:C1	2.81	0.63
1:A:234:ASN:HD21	1:A:238:ARG:HE	1.47	0.63
1:B:82:TYR:OH	1:B:87:HIS:HD2	1.82	0.62
1:A:82:TYR:OH	1:A:87:HIS:HD2	1.83	0.60
1:B:96:LEU:CD2	1:B:98:ILE:HD11	2.31	0.60
1:A:7:LEU:O	1:A:9:HIS:HD2	1.86	0.59
1:B:89:TYR:HB3	3:B:410:GOL:H2	1.83	0.59
1:B:9:HIS:ND1	3:B:410:GOL:H11	2.17	0.59
2:B:401:VRO:CAI	3:B:403:GOL:H31	2.32	0.59
1:B:87:HIS:HE1	1:B:92:LYS:O	1.87	0.56
3:A:404:GOL:H32	6:A:574:HOH:O	2.06	0.56
1:B:59:MET:CE	6:B:615:HOH:O	2.54	0.56
1:A:291:GLU:CD	6:A:774:HOH:O	2.45	0.54
3:B:410:GOL:H31	6:B:766:HOH:O	2.08	0.53
1:A:307:ARG:NH2	6:A:813:HOH:O	2.38	0.52
1:A:87:HIS:HE1	1:A:92:LYS:O	1.93	0.52
1:A:312:GLU:CD	1:A:312:GLU:C	2.69	0.51
1:B:59:MET:HE3	6:B:615:HOH:O	2.10	0.51
1:B:0:MET:N	6:B:610:HOH:O	2.44	0.50
1:B:234:ASN:ND2	1:B:238:ARG:HE	2.09	0.50
1:B:160:PRO:HB3	1:B:188:LYS:HG3	1.96	0.48
1:B:7:LEU:O	1:B:9:HIS:HD2	1.96	0.47
1:A:241:PRO:HA	3:A:404:GOL:H32	1.97	0.47
1:B:96:LEU:CD2	1:B:98:ILE:CD1	2.93	0.47
1:B:195:SER:HB3	6:B:779:HOH:O	2.16	0.46
1:B:9:HIS:ND1	3:B:410:GOL:C1	2.80	0.45
1:B:20:GLY:HA3	4:B:413:FMN:N5	2.32	0.45
1:A:195:SER:HB3	6:A:782:HOH:O	2.17	0.45
1:B:96:LEU:HD22	1:B:98:ILE:HD11	2.00	0.44
1:A:312:GLU:C	1:A:312:GLU:OE2	2.56	0.44
3:A:411:GOL:H2	3:B:412:GOL:H2	1.99	0.44
1:A:20:GLY:HA3	4:A:413:FMN:N5	2.33	0.44
1:B:13:ASN:HB2	1:B:14:PRO:HD2	2.00	0.43
1:A:217:PHE:CE1	3:B:402:GOL:H12	2.53	0.43
3:A:403:GOL:H31	1:B:217:PHE:CE1	2.54	0.42
1:A:234:ASN:ND2	1:A:238:ARG:HE	2.14	0.41

Continued on next page...

Continued from previous page...

Atom-1	Atom-2	Interatomic distance (Å)	Clash overlap (Å)
1:A:81:LYS:NZ	1:A:81:LYS:HB2	2.35	0.41
1:B:20:GLY:HA2	1:B:43:LYS:HD2	2.02	0.41
1:A:34:ALA:HB3	3:A:402:GOL:H12	2.04	0.40

There are no symmetry-related clashes.

5.3 Torsion angles [i](#)

5.3.1 Protein backbone [i](#)

In the following table, the Percentiles column shows the percent Ramachandran outliers of the chain as a percentile score with respect to all X-ray entries followed by that with respect to entries of similar resolution.

The Analysed column shows the number of residues for which the backbone conformation was analysed, and the total number of residues.

Mol	Chain	Analysed	Favoured	Allowed	Outliers	Percentiles	
1	A	311/313 (99%)	303 (97%)	8 (3%)	0	100	100
1	B	311/313 (99%)	303 (97%)	8 (3%)	0	100	100
All	All	622/626 (99%)	606 (97%)	16 (3%)	0	100	100

There are no Ramachandran outliers to report.

5.3.2 Protein sidechains [i](#)

In the following table, the Percentiles column shows the percent sidechain outliers of the chain as a percentile score with respect to all X-ray entries followed by that with respect to entries of similar resolution.

The Analysed column shows the number of residues for which the sidechain conformation was analysed, and the total number of residues.

Mol	Chain	Analysed	Rotameric	Outliers	Percentiles	
1	A	258/258 (100%)	255 (99%)	3 (1%)	74	52
1	B	258/258 (100%)	254 (98%)	4 (2%)	65	40
All	All	516/516 (100%)	509 (99%)	7 (1%)	69	46

All (7) residues with a non-rotameric sidechain are listed below:

Mol	Chain	Res	Type
1	A	4	LEU
1	A	5	ASN
1	A	129	SER
1	B	0	MET
1	B	132	ASN
1	B	136	LYS
1	B	302	GLU

Some sidechains can be flipped to improve hydrogen bonding and reduce clashes. All (13) such sidechains are listed below:

Mol	Chain	Res	Type
1	A	5	ASN
1	A	9	HIS
1	A	87	HIS
1	A	152	GLN
1	A	234	ASN
1	A	275	GLN
1	B	9	HIS
1	B	87	HIS
1	B	132	ASN
1	B	152	GLN
1	B	215	GLN
1	B	234	ASN
1	B	275	GLN

5.3.3 RNA [i](#)

There are no RNA molecules in this entry.

5.4 Non-standard residues in protein, DNA, RNA chains [i](#)

There are no non-standard protein/DNA/RNA residues in this entry.

5.5 Carbohydrates [i](#)

There are no carbohydrates in this entry.

5.6 Ligand geometry [i](#)

27 ligands are modelled in this entry.

In the following table, the Counts columns list the number of bonds (or angles) for which Mogul statistics could be retrieved, the number of bonds (or angles) that are observed in the model and the number of bonds (or angles) that are defined in the Chemical Component Dictionary. The Link column lists molecule types, if any, to which the group is linked. The Z score for a bond length (or angle) is the number of standard deviations the observed value is removed from the expected value. A bond length (or angle) with $|Z| > 2$ is considered an outlier worth inspection. RMSZ is the root-mean-square of all Z scores of the bond lengths (or angles).

Mol	Type	Chain	Res	Link	Bond lengths			Bond angles		
					Counts	RMSZ	$\# Z > 2$	Counts	RMSZ	$\# Z > 2$
2	VRO	A	401	-	17,22,22	2.69	5 (29%)	16,30,30	3.52	2 (12%)
3	GOL	A	402	-	5,5,5	0.77	0	5,5,5	2.35	3 (60%)
3	GOL	A	403	-	5,5,5	0.49	0	5,5,5	1.04	1 (20%)
3	GOL	A	404	-	5,5,5	0.29	0	5,5,5	0.42	0
3	GOL	A	405	-	5,5,5	1.13	0	5,5,5	0.67	0
3	GOL	A	406	-	5,5,5	0.78	0	5,5,5	1.24	1 (20%)
3	GOL	A	407	-	5,5,5	1.16	0	5,5,5	1.42	1 (20%)
3	GOL	A	408	-	5,5,5	0.59	0	5,5,5	0.44	0
3	GOL	A	409	-	5,5,5	0.73	0	5,5,5	0.47	0
3	GOL	A	410	-	5,5,5	0.15	0	5,5,5	0.88	0
3	GOL	A	411	-	5,5,5	0.56	0	5,5,5	0.95	0
3	GOL	A	412	-	5,5,5	0.28	0	5,5,5	0.51	0
4	FMN	A	413	-	31,33,33	1.58	8 (25%)	39,50,50	2.16	7 (17%)
5	NCO	A	414	-	6,6,6	2.86	4 (66%)	0,15,15	0.00	-
2	VRO	B	401	-	17,22,22	2.32	5 (29%)	16,30,30	2.82	6 (37%)
3	GOL	B	402	-	5,5,5	0.49	0	5,5,5	0.86	0
3	GOL	B	403	-	5,5,5	0.57	0	5,5,5	0.93	0
3	GOL	B	404	-	5,5,5	0.62	0	5,5,5	0.59	0
3	GOL	B	405	-	5,5,5	0.40	0	5,5,5	0.54	0
3	GOL	B	406	-	5,5,5	0.40	0	5,5,5	0.74	0
3	GOL	B	407	-	5,5,5	0.59	0	5,5,5	0.88	0
3	GOL	B	408	-	5,5,5	0.81	0	5,5,5	1.34	2 (40%)
3	GOL	B	409	-	5,5,5	0.62	0	5,5,5	1.66	1 (20%)
3	GOL	B	410	-	5,5,5	0.29	0	5,5,5	0.97	0
3	GOL	B	411	-	5,5,5	0.49	0	5,5,5	0.88	0
3	GOL	B	412	-	5,5,5	0.75	0	5,5,5	0.84	0
4	FMN	B	413	-	31,33,33	1.19	2 (6%)	39,50,50	2.63	8 (20%)

In the following table, the Chirals column lists the number of chiral outliers, the number of chiral centers analysed, the number of these observed in the model and the number defined in the Chemical Component Dictionary. Similar counts are reported in the Torsion and Rings columns. '-' means no outliers of that kind were identified.

Mol	Type	Chain	Res	Link	Chirals	Torsions	Rings
2	VRO	A	401	-	-	0/7/11/11	0/2/2/2
3	GOL	A	402	-	-	0/4/4/4	0/0/0/0
3	GOL	A	403	-	-	0/4/4/4	0/0/0/0
3	GOL	A	404	-	-	0/4/4/4	0/0/0/0
3	GOL	A	405	-	-	0/4/4/4	0/0/0/0
3	GOL	A	406	-	-	0/4/4/4	0/0/0/0
3	GOL	A	407	-	-	0/4/4/4	0/0/0/0
3	GOL	A	408	-	-	0/4/4/4	0/0/0/0
3	GOL	A	409	-	-	0/4/4/4	0/0/0/0
3	GOL	A	410	-	-	0/4/4/4	0/0/0/0
3	GOL	A	411	-	-	0/4/4/4	0/0/0/0
3	GOL	A	412	-	-	0/4/4/4	0/0/0/0
4	FMN	A	413	-	-	0/16/18/18	0/3/3/3
5	NCO	A	414	-	-	0/0/0/0	0/0/0/0
2	VRO	B	401	-	-	0/7/11/11	0/2/2/2
3	GOL	B	402	-	-	0/4/4/4	0/0/0/0
3	GOL	B	403	-	-	0/4/4/4	0/0/0/0
3	GOL	B	404	-	-	0/4/4/4	0/0/0/0
3	GOL	B	405	-	-	0/4/4/4	0/0/0/0
3	GOL	B	406	-	-	0/4/4/4	0/0/0/0
3	GOL	B	407	-	-	0/4/4/4	0/0/0/0
3	GOL	B	408	-	-	0/4/4/4	0/0/0/0
3	GOL	B	409	-	-	0/4/4/4	0/0/0/0
3	GOL	B	410	-	-	0/4/4/4	0/0/0/0
3	GOL	B	411	-	-	0/4/4/4	0/0/0/0
3	GOL	B	412	-	-	0/4/4/4	0/0/0/0
4	FMN	B	413	-	-	0/16/18/18	0/3/3/3

All (24) bond length outliers are listed below:

Mol	Chain	Res	Type	Atoms	Z	Observed(Å)	Ideal(Å)
2	A	401	VRO	CAK-CAS	-5.91	1.41	1.52
2	B	401	VRO	CAJ-CAP	-4.82	1.37	1.51
2	A	401	VRO	CAJ-CAP	-4.08	1.39	1.51
4	B	413	FMN	C2-N1	-2.70	1.32	1.38
4	A	413	FMN	C1'-N10	-2.33	1.46	1.48
4	A	413	FMN	C2-N3	-2.27	1.33	1.38
2	A	401	VRO	OAN-CAA	2.06	1.48	1.42
4	B	413	FMN	C6-C7	2.18	1.43	1.37
2	B	401	VRO	CAH-CAF	2.19	1.42	1.38
4	A	413	FMN	C8-C7	2.23	1.46	1.40
4	A	413	FMN	C4-N3	2.25	1.37	1.33
4	A	413	FMN	C9A-N10	2.39	1.41	1.38

Continued on next page...

Continued from previous page...

Mol	Chain	Res	Type	Atoms	Z	Observed(Å)	Ideal(Å)
2	B	401	VRO	OAN-CAA	2.56	1.50	1.42
4	A	413	FMN	C5'-C4'	2.86	1.55	1.51
4	A	413	FMN	C4A-C10	2.88	1.45	1.41
5	A	414	NCO	CO-N4	3.07	2.08	1.97
5	A	414	NCO	CO-N2	3.14	2.08	1.97
5	A	414	NCO	CO-N1	3.20	2.08	1.97
5	A	414	NCO	CO-N6	3.79	2.10	1.97
4	A	413	FMN	C5A-N5	3.98	1.41	1.35
2	B	401	VRO	CAR-NAL	4.60	1.42	1.34
2	A	401	VRO	CAU-NAM	4.74	1.41	1.33
2	B	401	VRO	CAU-NAM	4.80	1.41	1.33
2	A	401	VRO	CAR-NAL	4.88	1.42	1.34

All (32) bond angle outliers are listed below:

Mol	Chain	Res	Type	Atoms	Z	Observed(°)	Ideal(°)
4	B	413	FMN	C4-C4A-C10	-5.55	115.81	119.95
4	A	413	FMN	C4A-C4-N3	-4.54	117.01	123.47
4	B	413	FMN	C4A-C4-N3	-4.11	117.63	123.47
4	A	413	FMN	C4-C4A-C10	-4.10	116.89	119.95
4	B	413	FMN	C4A-C10-N10	-3.87	116.80	120.40
4	B	413	FMN	C1'-N10-C10	-3.77	114.69	118.46
3	A	402	GOL	O2-C2-C1	-3.70	92.11	109.00
4	A	413	FMN	C4A-C10-N10	-3.59	117.06	120.40
2	B	401	VRO	CAF-CAH-CAQ	-2.73	116.38	119.73
3	B	409	GOL	C3-C2-C1	-2.52	101.92	111.63
2	B	401	VRO	CAJ-CAP-CAG	-2.14	115.74	121.23
3	A	402	GOL	O2-C2-C3	-2.04	99.66	109.00
3	B	408	GOL	C3-C2-C1	-2.04	103.78	111.63
3	A	403	GOL	C3-C2-C1	2.07	119.59	111.63
4	B	413	FMN	C4A-N5-C5A	2.08	118.95	116.76
3	B	408	GOL	O2-C2-C3	2.10	118.59	109.00
2	B	401	VRO	CAJ-CAP-CAF	2.24	126.99	121.23
3	A	407	GOL	C3-C2-C1	2.25	120.30	111.63
3	A	406	GOL	O3-C3-C2	2.31	121.33	110.11
4	A	413	FMN	C1'-N10-C9A	2.47	120.51	118.31
2	A	401	VRO	CAH-CAF-CAP	2.53	124.50	121.02
3	A	402	GOL	C3-C2-C1	2.54	121.42	111.63
2	B	401	VRO	CAH-CAF-CAP	2.62	124.64	121.02
4	B	413	FMN	C4-C4A-N5	2.81	121.86	118.70
4	A	413	FMN	O5'-C5'-C4'	3.16	117.79	109.36
4	A	413	FMN	C10-C4A-N5	3.68	124.82	120.59

Continued on next page...

Continued from previous page...

Mol	Chain	Res	Type	Atoms	Z	Observed(°)	Ideal(°)
2	B	401	VRO	CAG-CAI-CAQ	4.00	124.65	119.73
4	B	413	FMN	C1'-N10-C9A	5.21	122.94	118.31
2	B	401	VRO	CAU-NAM-CAT	8.69	122.54	115.14
4	A	413	FMN	C4-N3-C2	9.06	122.85	115.14
4	B	413	FMN	C4-N3-C2	10.95	124.46	115.14
2	A	401	VRO	CAU-NAM-CAT	13.53	126.66	115.14

There are no chirality outliers.

There are no torsion outliers.

There are no ring outliers.

12 monomers are involved in 17 short contacts:

Mol	Chain	Res	Type	Clashes	Symm-Clashes
3	A	402	GOL	1	0
3	A	403	GOL	1	0
3	A	404	GOL	2	0
3	A	407	GOL	1	0
3	A	411	GOL	1	0
4	A	413	FMN	1	0
2	B	401	VRO	2	0
3	B	402	GOL	1	0
3	B	403	GOL	2	0
3	B	410	GOL	6	0
3	B	412	GOL	1	0
4	B	413	FMN	1	0

5.7 Other polymers [i](#)

There are no such residues in this entry.

5.8 Polymer linkage issues [i](#)

There are no chain breaks in this entry.

6 Fit of model and data [i](#)

6.1 Protein, DNA and RNA chains [i](#)

In the following table, the column labelled ‘#RSRZ > 2’ contains the number (and percentage) of RSRZ outliers, followed by percent RSRZ outliers for the chain as percentile scores relative to all X-ray entries and entries of similar resolution. The OWAB column contains the minimum, median, 95th percentile and maximum values of the occupancy-weighted average B-factor per residue. The column labelled ‘Q < 0.9’ lists the number of (and percentage) of residues with an average occupancy less than 0.9.

Mol	Chain	Analysed	<RSRZ>	#RSRZ>2	OWAB(Å ²)	Q<0.9
1	A	313/313 (100%)	-0.38	1 (0%) 93 93	6, 11, 22, 50	0
1	B	313/313 (100%)	-0.33	2 (0%) 89 89	6, 12, 26, 54	0
All	All	626/626 (100%)	-0.36	3 (0%) 90 91	6, 11, 24, 54	0

All (3) RSRZ outliers are listed below:

Mol	Chain	Res	Type	RSRZ
1	A	312	GLU	3.7
1	B	312	GLU	2.8
1	B	0	MET	2.8

6.2 Non-standard residues in protein, DNA, RNA chains [i](#)

There are no non-standard protein/DNA/RNA residues in this entry.

6.3 Carbohydrates [i](#)

There are no carbohydrates in this entry.

6.4 Ligands [i](#)

In the following table, the Atoms column lists the number of modelled atoms in the group and the number defined in the chemical component dictionary. The B-factors column lists the minimum, median, 95th percentile and maximum values of B factors of atoms in the group. The column labelled ‘Q < 0.9’ lists the number of atoms with occupancy less than 0.9.

Mol	Type	Chain	Res	Atoms	RSCC	RSR	B-factors(Å ²)	Q<0.9
3	GOL	B	407	6/6	0.67	0.40	43,54,56,56	0
3	GOL	B	405	6/6	0.72	0.21	40,47,49,51	0

Continued on next page...

Continued from previous page...

Mol	Type	Chain	Res	Atoms	RSCC	RSR	B-factors(\AA^2)	Q<0.9
3	GOL	B	412	6/6	0.76	0.20	40,44,45,46	0
3	GOL	B	411	6/6	0.78	0.21	40,47,48,49	0
3	GOL	A	408	6/6	0.79	0.13	35,38,40,43	0
3	GOL	B	409	6/6	0.79	0.14	34,37,43,47	0
3	GOL	A	409	6/6	0.83	0.27	31,47,50,55	0
3	GOL	B	406	6/6	0.84	0.16	34,36,38,43	0
3	GOL	A	406	6/6	0.86	0.21	25,35,38,39	0
3	GOL	B	404	6/6	0.87	0.12	39,41,42,47	0
3	GOL	A	410	6/6	0.88	0.15	35,47,54,65	0
3	GOL	A	411	6/6	0.88	0.18	37,38,41,50	0
3	GOL	A	404	6/6	0.88	0.12	39,45,47,51	0
3	GOL	A	405	6/6	0.89	0.16	19,26,36,39	0
3	GOL	B	408	6/6	0.89	0.11	26,29,36,40	0
3	GOL	A	412	6/6	0.90	0.21	46,49,51,52	0
3	GOL	A	407	6/6	0.92	0.16	28,32,32,33	0
3	GOL	A	402	6/6	0.92	0.11	17,17,20,21	0
3	GOL	B	410	6/6	0.92	0.26	27,41,42,55	0
3	GOL	B	402	6/6	0.92	0.08	20,22,24,30	0
3	GOL	A	403	6/6	0.94	0.07	18,20,22,24	0
3	GOL	B	403	6/6	0.95	0.12	20,29,37,39	0
2	VRO	A	401	21/21	0.95	0.10	7,11,32,44	0
2	VRO	B	401	21/21	0.97	0.08	8,10,23,32	0
4	FMN	A	413	31/31	0.98	0.09	6,7,9,9	0
4	FMN	B	413	31/31	0.99	0.08	6,7,9,9	0
5	NCO	A	414	7/7	0.99	0.09	10,11,12,13	0

6.5 Other polymers [i](#)

There are no such residues in this entry.