



wwPDB X-ray Structure Validation Summary Report ⓘ

Mar 13, 2018 – 03:48 pm GMT

PDB ID : 2WPF
Title : Trypanosoma brucei trypanothione reductase in complex with 3,4- dihydro-quinazoline inhibitor (DDD00085762)
Authors : Alphey, M.S.; Patterson, S.; Fairlamb, A.H.
Deposited on : 2009-08-06
Resolution : 1.90 Å(reported)

This is a wwPDB X-ray Structure Validation Summary Report for a publicly released PDB entry.

We welcome your comments at validation@mail.wwpdb.org

A user guide is available at

<https://www.wwpdb.org/validation/2017/XrayValidationReportHelp>

with specific help available everywhere you see the ⓘ symbol.

The following versions of software and data (see [references ⓘ](#)) were used in the production of this report:

MolProbity : 4.02b-467
Mogul : 1.7.3 (157068), CSD as539be (2018)
Xtriage (Phenix) : 1.13
EDS : trunk31020
Percentile statistics : 20171227.v01 (using entries in the PDB archive December 27th 2017)
Refmac : 5.8.0158
CCP4 : 7.0 (Gargrove)
Ideal geometry (proteins) : Engh & Huber (2001)
Ideal geometry (DNA, RNA) : Parkinson et al. (1996)
Validation Pipeline (wwPDB-VP) : trunk31020

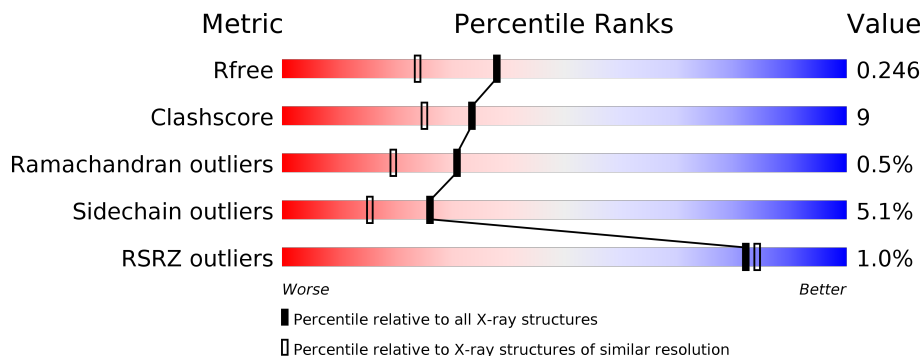
1 Overall quality at a glance

The following experimental techniques were used to determine the structure:

X-RAY DIFFRACTION

The reported resolution of this entry is 1.90 Å.

Percentile scores (ranging between 0-100) for global validation metrics of the entry are shown in the following graphic. The table shows the number of entries on which the scores are based.



Metric	Whole archive (#Entries)	Similar resolution (#Entries, resolution range(Å))
R_{free}	111664	5502 (1.90-1.90)
Clashscore	122126	6115 (1.90-1.90)
Ramachandran outliers	120053	6048 (1.90-1.90)
Sidechain outliers	120020	6048 (1.90-1.90)
RSRZ outliers	108989	5379 (1.90-1.90)

The table below summarises the geometric issues observed across the polymeric chains and their fit to the electron density. The red, orange, yellow and green segments on the lower bar indicate the fraction of residues that contain outliers for ≥ 3 , 2, 1 and 0 types of geometric quality criteria. A grey segment represents the fraction of residues that are not modelled. The numeric value for each fraction is indicated below the corresponding segment, with a dot representing fractions $\leq 5\%$. The upper red bar (where present) indicates the fraction of residues that have poor fit to the electron density. The numeric value is given above the bar.

Mol	Chain	Length	Quality of chain
1	A	495	<div> <div style="width: 100%; height: 10px; background: linear-gradient(to right, red 1%, orange 1%, yellow 19%, green 77%, grey 3%);"></div> <div style="display: flex; justify-content: space-between; width: 100%;"> % 77% 19% .. </div> </div>
1	B	495	<div> <div style="width: 100%; height: 10px; background: linear-gradient(to right, red 1%, orange 1%, yellow 20%, green 76%, grey 2%);"></div> <div style="display: flex; justify-content: space-between; width: 100%;"> % 76% 20% .. </div> </div>
1	C	495	<div> <div style="width: 100%; height: 10px; background: linear-gradient(to right, red 2%, orange 1%, yellow 21%, green 76%, grey 2%);"></div> <div style="display: flex; justify-content: space-between; width: 100%;"> 2% 76% 21% .. </div> </div>
1	D	495	<div> <div style="width: 100%; height: 10px; background: linear-gradient(to right, red 1%, orange 1%, yellow 17%, green 80%, grey 1%);"></div> <div style="display: flex; justify-content: space-between; width: 100%;"> % 80% 17% .. </div> </div>

2 Entry composition

There are 6 unique types of molecules in this entry. The entry contains 16503 atoms, of which 0 are hydrogens and 0 are deuteriums.

In the tables below, the ZeroOcc column contains the number of atoms modelled with zero occupancy, the AltConf column contains the number of residues with at least one atom in alternate conformation and the Trace column contains the number of residues modelled with at most 2 atoms.

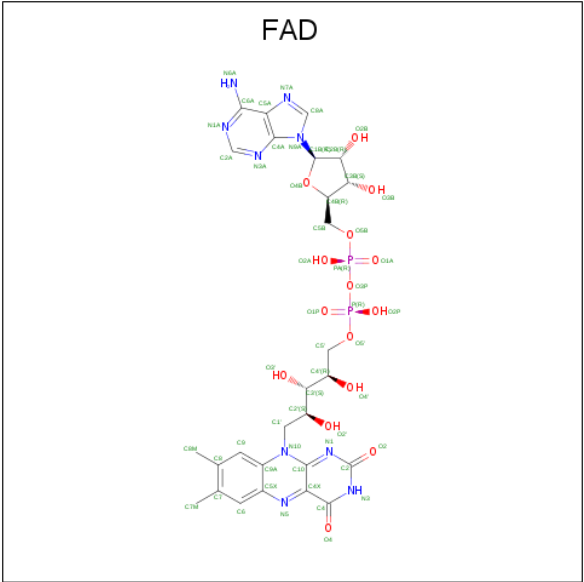
- Molecule 1 is a protein called TRYPANOTHIONE REDUCTASE.

Mol	Chain	Residues	Atoms					ZeroOcc	AltConf	Trace
1	A	490	Total	C	N	O	S	0	2	0
			3733	2374	636	702	21			
1	B	487	Total	C	N	O	S	0	2	0
			3702	2353	631	699	19			
1	C	487	Total	C	N	O	S	0	3	0
			3716	2364	630	703	19			
1	D	491	Total	C	N	O	S	0	2	0
			3737	2376	635	706	20			

There are 12 discrepancies between the modelled and reference sequences:

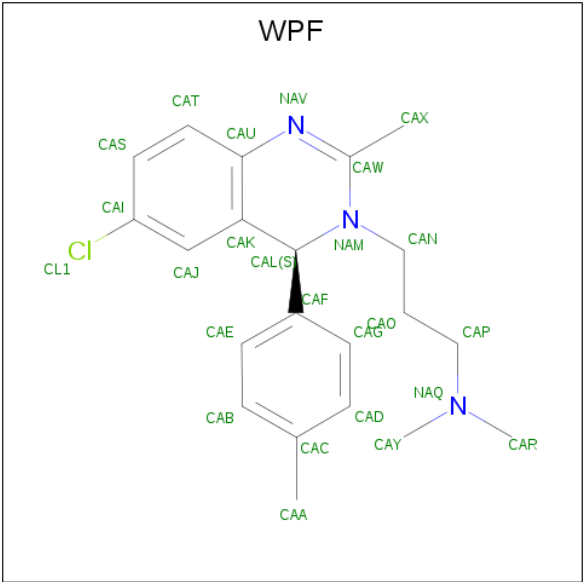
Chain	Residue	Modelled	Actual	Comment	Reference
A	-2	GLY	-	expression tag	UNP P39051
A	-1	SER	-	expression tag	UNP P39051
A	0	HIS	-	expression tag	UNP P39051
B	-2	GLY	-	expression tag	UNP P39051
B	-1	SER	-	expression tag	UNP P39051
B	0	HIS	-	expression tag	UNP P39051
C	-2	GLY	-	expression tag	UNP P39051
C	-1	SER	-	expression tag	UNP P39051
C	0	HIS	-	expression tag	UNP P39051
D	-2	GLY	-	expression tag	UNP P39051
D	-1	SER	-	expression tag	UNP P39051
D	0	HIS	-	expression tag	UNP P39051

- Molecule 2 is FLAVIN-ADENINE DINUCLEOTIDE (three-letter code: FAD) (formula: $C_{27}H_{33}N_9O_{15}P_2$).



Mol	Chain	Residues	Atoms					ZeroOcc	AltConf
2	A	1	Total	C	N	O	P	0	0
			53	27	9	15	2		
2	B	1	Total	C	N	O	P	0	0
			53	27	9	15	2		
2	C	1	Total	C	N	O	P	0	0
			53	27	9	15	2		
2	D	1	Total	C	N	O	P	0	0
			53	27	9	15	2		

- Molecule 3 is 3-[(4S)-6-CHLORO-2-METHYL-4-(4-METHYLPHENYL)QUINAZOLI N-3(4H)-YL]-N,N-DIMETHYLPROPAN-1-AMINE (three-letter code: WPF) (formula: C₂₁H₂₆ClN₃).



Mol	Chain	Residues	Atoms				ZeroOcc	AltConf
3	A	1	Total	C	Cl	N	0	0
			25	21	1	3		
3	B	1	Total	C	Cl	N	0	0
			25	21	1	3		
3	C	1	Total	C	Cl	N	0	0
			25	21	1	3		
3	D	1	Total	C	Cl	N	0	0
			25	21	1	3		

- Molecule 4 is CHLORIDE ION (three-letter code: CL) (formula: Cl).

Mol	Chain	Residues	Atoms		ZeroOcc	AltConf
4	B	2	Total	Cl	0	0
			2	2		
4	A	3	Total	Cl	0	0
			3	3		
4	C	2	Total	Cl	0	0
			2	2		

- Molecule 5 is BROMIDE ION (three-letter code: BR) (formula: Br).

Mol	Chain	Residues	Atoms		ZeroOcc	AltConf
5	B	1	Total	Br	0	0
			1	1		
5	D	2	Total	Br	0	0
			2	2		

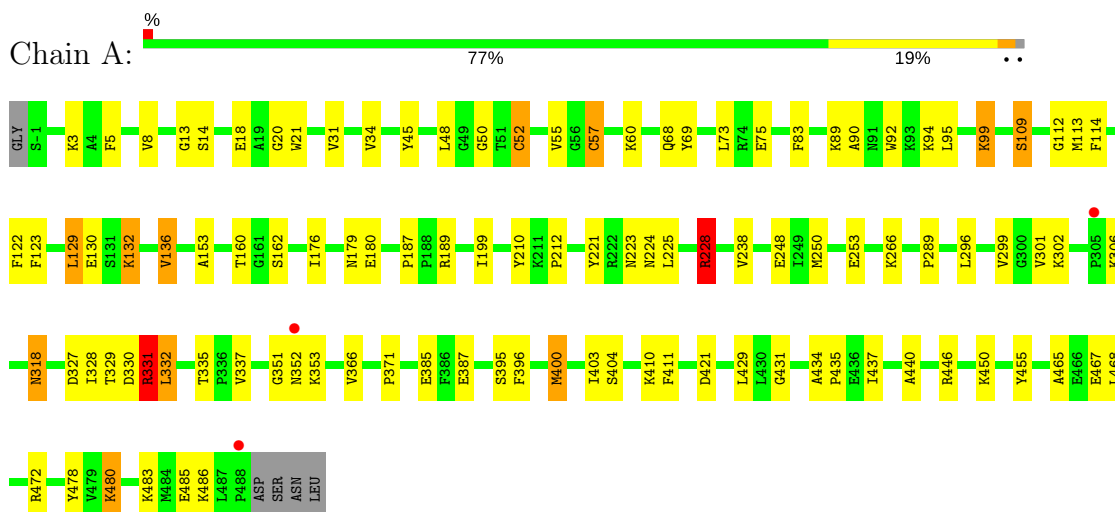
- Molecule 6 is water.

Mol	Chain	Residues	Atoms		ZeroOcc	AltConf
6	A	374	Total	O	0	0
			374	374		
6	B	290	Total	O	0	0
			290	290		
6	C	282	Total	O	0	0
			282	282		
6	D	347	Total	O	0	0
			347	347		

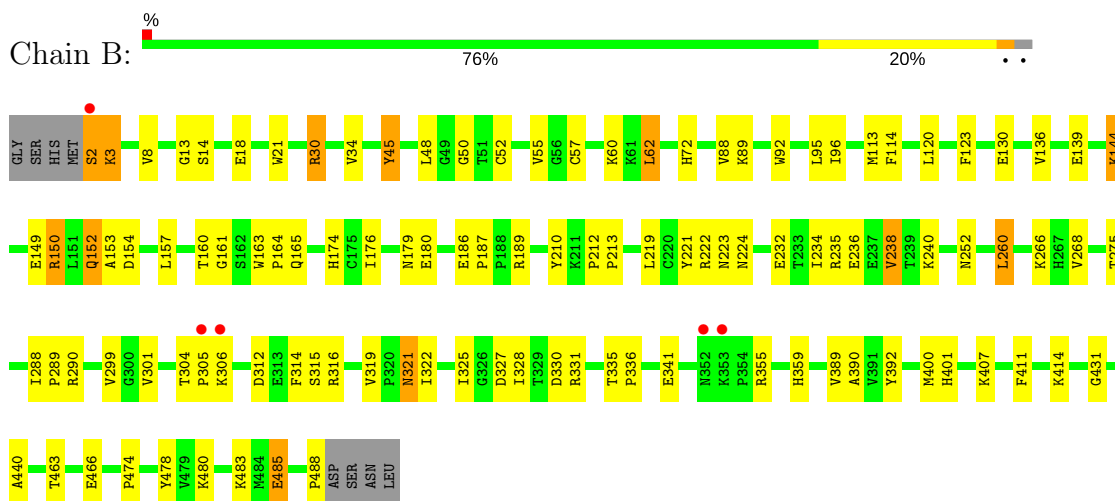
3 Residue-property plots [i](#)

These plots are drawn for all protein, RNA and DNA chains in the entry. The first graphic for a chain summarises the proportions of the various outlier classes displayed in the second graphic. The second graphic shows the sequence view annotated by issues in geometry and electron density. Residues are color-coded according to the number of geometric quality criteria for which they contain at least one outlier: green = 0, yellow = 1, orange = 2 and red = 3 or more. A red dot above a residue indicates a poor fit to the electron density ($RSRZ > 2$). Stretches of 2 or more consecutive residues without any outlier are shown as a green connector. Residues present in the sample, but not in the model, are shown in grey.

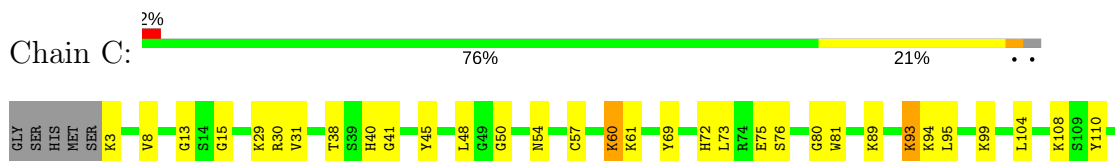
• Molecule 1: TRYPANOTHIONE REDUCTASE

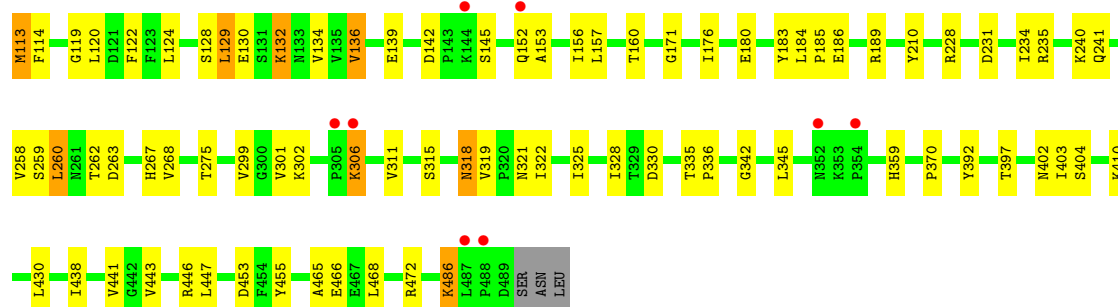


• Molecule 1: TRYPANOTHIONE REDUCTASE

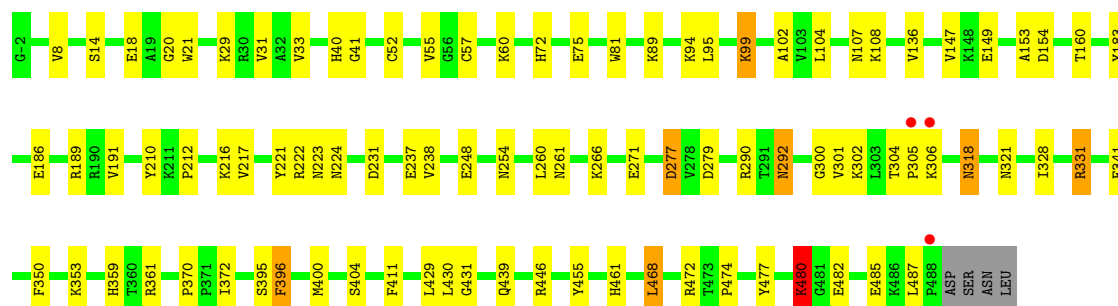
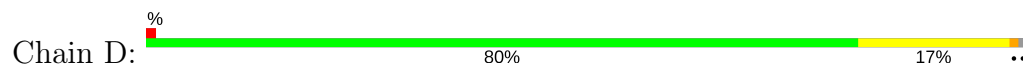


• Molecule 1: TRYPANOTHIONE REDUCTASE





• Molecule 1: TRYPANOTHIONE REDUCTASE



4 Data and refinement statistics

Property	Value	Source
Space group	P 1 21 1	Depositor
Cell constants a, b, c, α , β , γ	99.82Å 62.76Å 167.44Å 90.00° 98.13° 90.00°	Depositor
Resolution (Å)	19.89 – 1.90 19.89 – 1.90	Depositor EDS
% Data completeness (in resolution range)	100.0 (19.89-1.90) 99.4 (19.89-1.90)	Depositor EDS
R_{merge}	0.11	Depositor
R_{sym}	(Not available)	Depositor
$\langle I/\sigma(I) \rangle$ ¹	2.78 (at 1.90Å)	Xtriage
Refinement program	REFMAC 5.5.0088	Depositor
R, R_{free}	0.185 , 0.247 0.185 , 0.246	Depositor DCC
R_{free} test set	8048 reflections (5.00%)	wwPDB-VP
Wilson B-factor (Å ²)	19.0	Xtriage
Anisotropy	0.159	Xtriage
Bulk solvent k_{sol} (e/Å ³), B_{sol} (Å ²)	0.37 , 50.0	EDS
L-test for twinning ²	$\langle L \rangle = 0.43$, $\langle L^2 \rangle = 0.26$	Xtriage
Estimated twinning fraction	No twinning to report.	Xtriage
F_o, F_c correlation	0.95	EDS
Total number of atoms	16503	wwPDB-VP
Average B, all atoms (Å ²)	24.0	wwPDB-VP

Xtriage's analysis on translational NCS is as follows: *The largest off-origin peak in the Patterson function is 9.34% of the height of the origin peak. No significant pseudotranslation is detected.*

¹Intensities estimated from amplitudes.

²Theoretical values of $\langle |L| \rangle$, $\langle L^2 \rangle$ for acentric reflections are 0.5, 0.333 respectively for untwinned datasets, and 0.375, 0.2 for perfectly twinned datasets.

5 Model quality ⓘ

5.1 Standard geometry ⓘ

Bond lengths and bond angles in the following residue types are not validated in this section: WPF, BR, FAD, CL

The Z score for a bond length (or angle) is the number of standard deviations the observed value is removed from the expected value. A bond length (or angle) with $|Z| > 5$ is considered an outlier worth inspection. RMSZ is the root-mean-square of all Z scores of the bond lengths (or angles).

Mol	Chain	Bond lengths		Bond angles	
		RMSZ	# $ Z > 5$	RMSZ	# $ Z > 5$
1	A	1.10	3/3818 (0.1%)	1.00	3/5178 (0.1%)
1	B	0.98	1/3785 (0.0%)	0.93	7/5135 (0.1%)
1	C	0.97	2/3803 (0.1%)	0.92	4/5161 (0.1%)
1	D	1.04	1/3822 (0.0%)	0.95	6/5184 (0.1%)
All	All	1.02	7/15228 (0.0%)	0.95	20/20658 (0.1%)

The worst 5 of 7 bond length outliers are listed below:

Mol	Chain	Res	Type	Atoms	Z	Observed(Å)	Ideal(Å)
1	A	228	ARG	CG-CD	6.56	1.68	1.51
1	C	240	LYS	CD-CE	5.77	1.65	1.51
1	A	366	VAL	CB-CG1	5.28	1.64	1.52
1	C	240	LYS	CE-NZ	5.23	1.62	1.49
1	A	136	VAL	CB-CG2	-5.11	1.42	1.52

The worst 5 of 20 bond angle outliers are listed below:

Mol	Chain	Res	Type	Atoms	Z	Observed(°)	Ideal(°)
1	A	331[A]	ARG	NE-CZ-NH2	-9.95	115.33	120.30
1	A	331[B]	ARG	NE-CZ-NH2	-9.95	115.33	120.30
1	A	228	ARG	NE-CZ-NH1	6.89	123.75	120.30
1	B	290	ARG	NE-CZ-NH2	-6.84	116.88	120.30
1	B	312	ASP	CB-CG-OD1	5.85	123.57	118.30

There are no chirality outliers.

There are no planarity outliers.

5.2 Too-close contacts ⓘ

In the following table, the Non-H and H(model) columns list the number of non-hydrogen atoms and hydrogen atoms in the chain respectively. The H(added) column lists the number of hydrogen atoms added and optimized by MolProbity. The Clashes column lists the number of clashes within the asymmetric unit, whereas Symm-Clashes lists symmetry related clashes.

Mol	Chain	Non-H	H(model)	H(added)	Clashes	Symm-Clashes
1	A	3733	0	3750	74	0
1	B	3702	0	3701	75	0
1	C	3716	0	3725	76	0
1	D	3737	0	3747	61	0
2	A	53	0	31	0	0
2	B	53	0	31	1	0
2	C	53	0	31	0	0
2	D	53	0	31	0	0
3	A	25	0	26	4	0
3	B	25	0	26	3	0
3	C	25	0	26	8	0
3	D	25	0	26	3	0
4	A	3	0	0	1	0
4	B	2	0	0	0	0
4	C	2	0	0	0	0
5	B	1	0	0	0	0
5	D	2	0	0	0	0
6	A	374	0	0	14	0
6	B	290	0	0	10	0
6	C	282	0	0	5	0
6	D	347	0	0	8	0
All	All	16503	0	15151	278	0

The all-atom clashscore is defined as the number of clashes found per 1000 atoms (including hydrogen atoms). The all-atom clashscore for this structure is 9.

The worst 5 of 278 close contacts within the same asymmetric unit are listed below, sorted by their clash magnitude.

Atom-1	Atom-2	Interatomic distance (Å)	Clash overlap (Å)
1:B:2:SER:O	1:B:3:LYS:HG2	1.61	0.99
1:B:8:VAL:HG23	1:B:153:ALA:HB2	1.51	0.91
1:B:130:GLU:HB2	1:B:136:VAL:HG23	1.53	0.91
1:C:130:GLU:HB2	1:C:136:VAL:CG2	2.01	0.89
1:C:301:VAL:HA	1:C:318:ASN:HD21	1.46	0.80

There are no symmetry-related clashes.

5.3 Torsion angles [i](#)

5.3.1 Protein backbone [i](#)

In the following table, the Percentiles column shows the percent Ramachandran outliers of the chain as a percentile score with respect to all X-ray entries followed by that with respect to entries of similar resolution.

The Analysed column shows the number of residues for which the backbone conformation was analysed, and the total number of residues.

Mol	Chain	Analysed	Favoured	Allowed	Outliers	Percentiles	
1	A	490/495 (99%)	472 (96%)	16 (3%)	2 (0%)	36	25
1	B	487/495 (98%)	468 (96%)	16 (3%)	3 (1%)	27	15
1	C	488/495 (99%)	471 (96%)	15 (3%)	2 (0%)	36	25
1	D	491/495 (99%)	475 (97%)	13 (3%)	3 (1%)	27	15
All	All	1956/1980 (99%)	1886 (96%)	60 (3%)	10 (0%)	31	20

5 of 10 Ramachandran outliers are listed below:

Mol	Chain	Res	Type
1	C	132	LYS
1	B	3	LYS
1	B	45	TYR
1	D	480	LYS
1	A	480	LYS

5.3.2 Protein sidechains [i](#)

In the following table, the Percentiles column shows the percent sidechain outliers of the chain as a percentile score with respect to all X-ray entries followed by that with respect to entries of similar resolution.

The Analysed column shows the number of residues for which the sidechain conformation was analysed, and the total number of residues.

Mol	Chain	Analysed	Rotameric	Outliers	Percentiles	
1	A	405/407 (100%)	381 (94%)	24 (6%)	21	11
1	B	399/407 (98%)	382 (96%)	17 (4%)	32	21
1	C	403/407 (99%)	382 (95%)	21 (5%)	25	15

Continued on next page...

Continued from previous page...

Mol	Chain	Analysed	Rotameric	Outliers	Percentiles	
1	D	405/407 (100%)	382 (94%)	23 (6%)	23	12
All	All	1612/1628 (99%)	1527 (95%)	85 (5%)	26	14

5 of 85 residues with a non-rotameric sidechain are listed below:

Mol	Chain	Res	Type
1	B	407	LYS
1	C	99	LYS
1	D	331	ARG
1	B	480	LYS
1	C	57	CYS

Some sidechains can be flipped to improve hydrogen bonding and reduce clashes. 5 of 22 such sidechains are listed below:

Mol	Chain	Res	Type
1	C	107	ASN
1	C	318	ASN
1	D	321	ASN
1	C	152	GLN
1	C	310	GLN

5.3.3 RNA [i](#)

There are no RNA molecules in this entry.

5.4 Non-standard residues in protein, DNA, RNA chains [i](#)

There are no non-standard protein/DNA/RNA residues in this entry.

5.5 Carbohydrates [i](#)

There are no carbohydrates in this entry.

5.6 Ligand geometry [i](#)

Of 18 ligands modelled in this entry, 10 are monoatomic - leaving 8 for Mogul analysis.

In the following table, the Counts columns list the number of bonds (or angles) for which Mogul statistics could be retrieved, the number of bonds (or angles) that are observed in the model and

the number of bonds (or angles) that are defined in the Chemical Component Dictionary. The Link column lists molecule types, if any, to which the group is linked. The Z score for a bond length (or angle) is the number of standard deviations the observed value is removed from the expected value. A bond length (or angle) with $|Z| > 2$ is considered an outlier worth inspection. RMSZ is the root-mean-square of all Z scores of the bond lengths (or angles).

Mol	Type	Chain	Res	Link	Bond lengths			Bond angles		
					Counts	RMSZ	# Z > 2	Counts	RMSZ	# Z > 2
3	WPF	A	1000	-	27,27,27	2.09	6 (22%)	33,38,38	1.69	7 (21%)
2	FAD	A	998	-	51,58,58	1.29	6 (11%)	57,89,89	2.12	11 (19%)
3	WPF	B	1000	-	27,27,27	2.22	7 (25%)	33,38,38	1.90	7 (21%)
2	FAD	B	998	-	51,58,58	1.31	4 (7%)	57,89,89	2.48	11 (19%)
3	WPF	C	1000	-	27,27,27	2.47	9 (33%)	33,38,38	1.83	8 (24%)
2	FAD	C	998	-	51,58,58	1.24	5 (9%)	57,89,89	2.63	18 (31%)
3	WPF	D	1000	-	27,27,27	2.19	7 (25%)	33,38,38	1.64	4 (12%)
2	FAD	D	998	-	51,58,58	1.16	4 (7%)	57,89,89	2.16	12 (21%)

In the following table, the Chirals column lists the number of chiral outliers, the number of chiral centers analysed, the number of these observed in the model and the number defined in the Chemical Component Dictionary. Similar counts are reported in the Torsion and Rings columns. '-' means no outliers of that kind were identified.

Mol	Type	Chain	Res	Link	Chirals	Torsions	Rings
3	WPF	A	1000	-	-	0/10/26/26	0/3/3/3
2	FAD	A	998	-	-	0/28/50/50	0/6/6/6
3	WPF	B	1000	-	-	0/10/26/26	0/3/3/3
2	FAD	B	998	-	-	0/28/50/50	0/6/6/6
3	WPF	C	1000	-	-	0/10/26/26	0/3/3/3
2	FAD	C	998	-	-	0/28/50/50	0/6/6/6
3	WPF	D	1000	-	-	0/10/26/26	0/3/3/3
2	FAD	D	998	-	-	0/28/50/50	0/6/6/6

The worst 5 of 48 bond length outliers are listed below:

Mol	Chain	Res	Type	Atoms	Z	Observed(Å)	Ideal(Å)
2	B	998	FAD	C9A-C5X	-2.37	1.37	1.42
2	C	998	FAD	C4-C4X	-2.19	1.37	1.41
3	B	1000	WPF	CAJ-CAI	2.02	1.41	1.38
3	C	1000	WPF	CAI-CL1	2.02	1.79	1.74
2	D	998	FAD	C5X-N5	2.09	1.38	1.35

The worst 5 of 78 bond angle outliers are listed below:

Mol	Chain	Res	Type	Atoms	Z	Observed($^{\circ}$)	Ideal($^{\circ}$)
2	C	998	FAD	N3A-C2A-N1A	-11.67	118.87	128.86
2	B	998	FAD	N3A-C2A-N1A	-9.70	120.56	128.86
2	A	998	FAD	N3A-C2A-N1A	-9.06	121.11	128.86
2	D	998	FAD	N3A-C2A-N1A	-7.64	122.32	128.86
3	A	1000	WPF	CAF-CAL-NAM	-6.10	102.48	111.60

There are no chirality outliers.

There are no torsion outliers.

There are no ring outliers.

5 monomers are involved in 19 short contacts:

Mol	Chain	Res	Type	Clashes	Symm-Clashes
3	A	1000	WPF	4	0
3	B	1000	WPF	3	0
2	B	998	FAD	1	0
3	C	1000	WPF	8	0
3	D	1000	WPF	3	0

5.7 Other polymers [i](#)

There are no such residues in this entry.

5.8 Polymer linkage issues [i](#)

There are no chain breaks in this entry.

6 Fit of model and data [i](#)

6.1 Protein, DNA and RNA chains [i](#)

In the following table, the column labelled ‘#RSRZ> 2’ contains the number (and percentage) of RSRZ outliers, followed by percent RSRZ outliers for the chain as percentile scores relative to all X-ray entries and entries of similar resolution. The OWAB column contains the minimum, median, 95th percentile and maximum values of the occupancy-weighted average B-factor per residue. The column labelled ‘Q< 0.9’ lists the number of (and percentage) of residues with an average occupancy less than 0.9.

Mol	Chain	Analysed	<RSRZ>	#RSRZ>2	OWAB(Å ²)	Q<0.9
1	A	490/495 (98%)	-0.43	3 (0%) 89 90	9, 19, 33, 46	0
1	B	487/495 (98%)	-0.28	5 (1%) 82 84	13, 24, 41, 53	0
1	C	487/495 (98%)	-0.18	8 (1%) 72 75	12, 24, 45, 57	0
1	D	491/495 (99%)	-0.41	3 (0%) 89 90	10, 20, 33, 47	0
All	All	1955/1980 (98%)	-0.32	19 (0%) 82 84	9, 21, 41, 57	0

The worst 5 of 19 RSRZ outliers are listed below:

Mol	Chain	Res	Type	RSRZ
1	C	352	ASN	4.2
1	B	352	ASN	4.0
1	C	306	LYS	3.5
1	C	305	PRO	3.5
1	D	305	PRO	3.1

6.2 Non-standard residues in protein, DNA, RNA chains [i](#)

There are no non-standard protein/DNA/RNA residues in this entry.

6.3 Carbohydrates [i](#)

There are no carbohydrates in this entry.

6.4 Ligands [i](#)

In the following table, the Atoms column lists the number of modelled atoms in the group and the number defined in the chemical component dictionary. The B-factors column lists the minimum, median, 95th percentile and maximum values of B factors of atoms in the group. The column labelled ‘Q< 0.9’ lists the number of atoms with occupancy less than 0.9.

Mol	Type	Chain	Res	Atoms	RSCC	RSR	B-factors(\AA^2)	Q<0.9
3	WPF	C	1000	25/25	0.81	0.27	48,62,66,67	0
3	WPF	B	1000	25/25	0.90	0.19	36,41,54,55	0
3	WPF	A	1000	25/25	0.91	0.16	22,30,47,48	0
3	WPF	D	1000	25/25	0.92	0.15	25,32,43,46	0
5	BR	D	1489	1/1	0.94	0.09	66,66,66,66	0
5	BR	B	1491	1/1	0.95	0.15	69,69,69,69	0
2	FAD	B	998	53/53	0.97	0.08	15,21,27,28	0
2	FAD	A	998	53/53	0.98	0.07	2,12,16,17	0
4	CL	A	1491	1/1	0.98	0.04	27,27,27,27	0
2	FAD	D	998	53/53	0.98	0.07	11,14,18,19	0
4	CL	C	1491	1/1	0.98	0.04	22,22,22,22	0
2	FAD	C	998	53/53	0.98	0.07	13,21,27,28	0
4	CL	A	1489	1/1	0.99	0.10	17,17,17,17	0
4	CL	C	1490	1/1	0.99	0.08	15,15,15,15	0
4	CL	B	1489	1/1	0.99	0.10	17,17,17,17	0
4	CL	A	1490	1/1	0.99	0.09	19,19,19,19	0
4	CL	B	1490	1/1	1.00	0.08	18,18,18,18	0
5	BR	D	1490	1/1	1.00	0.02	36,36,36,36	0

6.5 Other polymers [i](#)

There are no such residues in this entry.