



# Full wwPDB X-ray Structure Validation Report ⓘ

Mar 8, 2018 – 07:31 pm GMT

PDB ID : 2WZ6  
Title : G93A SOD1 mutant complexed with Quinazoline.  
Authors : Antonyuk, S.V.; Strange, R.W.; Hasnain, S.S.  
Deposited on : 2009-11-23  
Resolution : 1.55 Å(reported)

This is a Full wwPDB X-ray Structure Validation Report for a publicly released PDB entry.

We welcome your comments at [validation@mail.wwpdb.org](mailto:validation@mail.wwpdb.org)

A user guide is available at

<https://www.wwpdb.org/validation/2017/XrayValidationReportHelp>

with specific help available everywhere you see the ⓘ symbol.

---

The following versions of software and data (see [references ⓘ](#)) were used in the production of this report:

MolProbity : 4.02b-467  
Mogul : 1.7.3 (157068), CSD as539be (2018)  
Xtriage (Phenix) : 1.13  
EDS : trunk30967  
Percentile statistics : 20171227.v01 (using entries in the PDB archive December 27th 2017)  
Refmac : 5.8.0158  
CCP4 : 7.0 (Gargrove)  
Ideal geometry (proteins) : Engh & Huber (2001)  
Ideal geometry (DNA, RNA) : Parkinson et al. (1996)  
Validation Pipeline (wwPDB-VP) : trunk30967

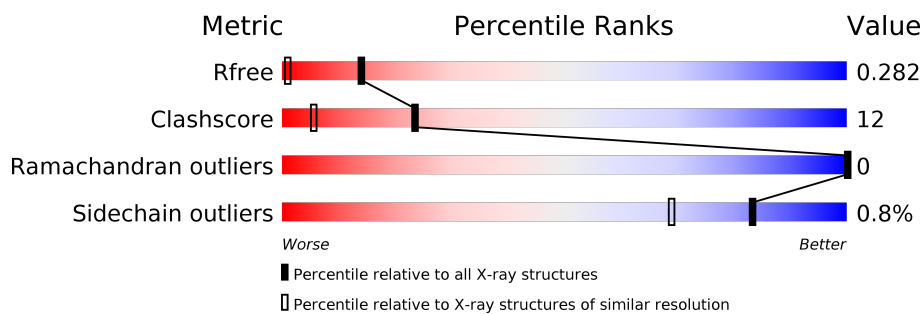
# 1 Overall quality at a glance

The following experimental techniques were used to determine the structure:

*X-RAY DIFFRACTION*

The reported resolution of this entry is 1.55 Å.

Percentile scores (ranging between 0-100) for global validation metrics of the entry are shown in the following graphic. The table shows the number of entries on which the scores are based.



Metric	Whole archive (#Entries)	Similar resolution (#Entries, resolution range(Å))
$R_{free}$	111664	1224 (1.56-1.56)
Clashscore	122126	1265 (1.56-1.56)
Ramachandran outliers	120053	1240 (1.56-1.56)
Sidechain outliers	120020	1238 (1.56-1.56)

The table below summarises the geometric issues observed across the polymeric chains and their fit to the electron density. The red, orange, yellow and green segments on the lower bar indicate the fraction of residues that contain outliers for  $\geq 3$ , 2, 1 and 0 types of geometric quality criteria. A grey segment represents the fraction of residues that are not modelled. The numeric value for each fraction is indicated below the corresponding segment, with a dot representing fractions  $\leq 5\%$ .

Mol	Chain	Length	Quality of chain
1	A	153	 90%      10%
1	F	153	 86%      14%

## 2 Entry composition [i](#)

There are 6 unique types of molecules in this entry. The entry contains 2775 atoms, of which 0 are hydrogens and 0 are deuteriums.

In the tables below, the ZeroOcc column contains the number of atoms modelled with zero occupancy, the AltConf column contains the number of residues with at least one atom in alternate conformation and the Trace column contains the number of residues modelled with at most 2 atoms.

- Molecule 1 is a protein called SUPEROXIDE DISMUTASE [CU-ZN].

Mol	Chain	Residues	Atoms					ZeroOcc	AltConf	Trace
1	A	153	Total	C	N	O	S	0	7	0
			1149	705	208	232	4			
1	F	153	Total	C	N	O	S	0	7	0
			1135	698	205	228	4			

There are 2 discrepancies between the modelled and reference sequences:

Chain	Residue	Modelled	Actual	Comment	Reference
A	93	ALA	GLY	engineered mutation	UNP P00441
F	93	ALA	GLY	engineered mutation	UNP P00441

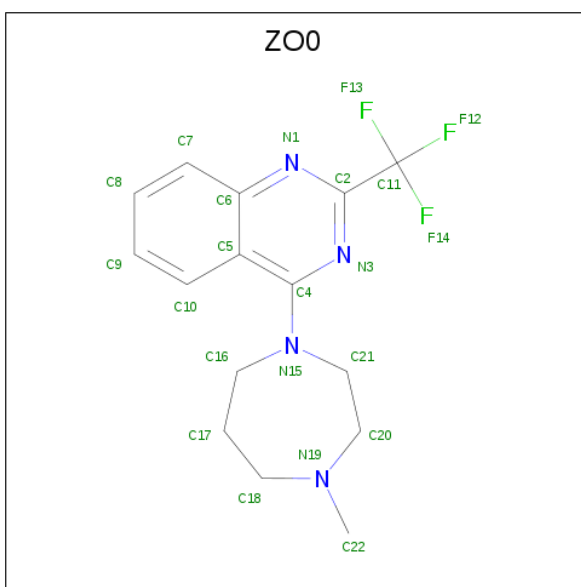
- Molecule 2 is ZINC ION (three-letter code: ZN) (formula: Zn).

Mol	Chain	Residues	Atoms		ZeroOcc	AltConf
2	A	2	Total	Zn	0	1
			2	2		
2	F	2	Total	Zn	0	1
			2	2		

- Molecule 3 is COPPER (II) ION (three-letter code: CU) (formula: Cu).

Mol	Chain	Residues	Atoms		ZeroOcc	AltConf
3	A	1	Total	Cu	0	1
			1	1		
3	F	1	Total	Cu	0	1
			1	1		

- Molecule 4 is 4-(4-METHYL-1,4-DIAZEPAN-1-YL)-2-(TRIFLUOROMETHYL)QUINAZOLINE (three-letter code: ZO0) (formula: C<sub>15</sub>H<sub>17</sub>F<sub>3</sub>N<sub>4</sub>).



Mol	Chain	Residues	Atoms				ZeroOcc	AltConf
4	A	1	Total	C	F	N	0	0
			22	15	3	4		
4	F	1	Total	C	F	N	0	0
			22	15	3	4		

- Molecule 5 is SULFATE ION (three-letter code: SO4) (formula: O<sub>4</sub>S).



Mol	Chain	Residues	Atoms			ZeroOcc	AltConf
5	A	1	Total	O	S	0	0
			5	4	1		
5	F	1	Total	O	S	0	0
			5	4	1		

*Continued on next page...*

*Continued from previous page...*

Mol	Chain	Residues	Atoms			ZeroOcc	AltConf
5	F	1	Total	O	S	0	0
			5	4	1		

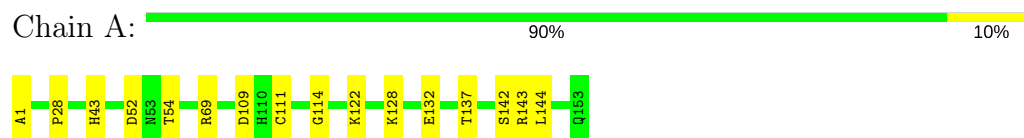
- Molecule 6 is water.

Mol	Chain	Residues	Atoms		ZeroOcc	AltConf
6	A	212	Total	O	0	2
			212	212		
6	F	214	Total	O	0	2
			214	214		

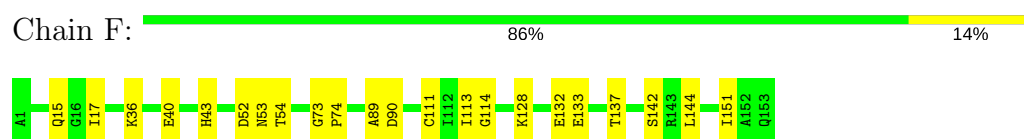
### 3 Residue-property plots

These plots are drawn for all protein, RNA and DNA chains in the entry. The first graphic for a chain summarises the proportions of the various outlier classes displayed in the second graphic. The second graphic shows the sequence view annotated by issues in geometry. Residues are color-coded according to the number of geometric quality criteria for which they contain at least one outlier: green = 0, yellow = 1, orange = 2 and red = 3 or more. Stretches of 2 or more consecutive residues without any outlier are shown as a green connector. Residues present in the sample, but not in the model, are shown in grey.

#### • Molecule 1: SUPEROXIDE DISMUTASE [CU-ZN]



#### • Molecule 1: SUPEROXIDE DISMUTASE [CU-ZN]



## 4 Data and refinement statistics

Property	Value	Source
Space group	P 1 21 1	Depositor
Cell constants a, b, c, $\alpha$ , $\beta$ , $\gamma$	39.00Å 68.03Å 50.63Å 90.00° 105.88° 90.00°	Depositor
Resolution (Å)	24.85 – 1.55 26.43 – 1.54	Depositor EDS
% Data completeness (in resolution range)	95.4 (24.85-1.55) 94.3 (26.43-1.54)	Depositor EDS
$R_{merge}$	0.07	Depositor
$R_{sym}$	(Not available)	Depositor
$\langle I/\sigma(I) \rangle$ <sup>1</sup>	3.78 (at 1.54Å)	Xtriage
Refinement program	REFMAC 5.5.0106	Depositor
R, $R_{free}$	0.195 , 0.248 0.243 , 0.282	Depositor DCC
$R_{free}$ test set	1780 reflections (5.00%)	wwPDB-VP
Wilson B-factor (Å <sup>2</sup> )	13.2	Xtriage
Anisotropy	0.506	Xtriage
Bulk solvent $k_{sol}$ (e/Å <sup>3</sup> ), $B_{sol}$ (Å <sup>2</sup> )	0.29 , 46.2	EDS
L-test for twinning <sup>2</sup>	$\langle  L  \rangle = 0.51$ , $\langle L^2 \rangle = 0.34$	Xtriage
Estimated twinning fraction	No twinning to report.	Xtriage
$F_o, F_c$ correlation	0.93	EDS
Total number of atoms	2775	wwPDB-VP
Average B, all atoms (Å <sup>2</sup> )	17.0	wwPDB-VP

Xtriage's analysis on translational NCS is as follows: *The largest off-origin peak in the Patterson function is 18.30% of the height of the origin peak. No significant pseudotranslation is detected.*

<sup>1</sup>Intensities estimated from amplitudes.

<sup>2</sup>Theoretical values of  $\langle |L| \rangle$ ,  $\langle L^2 \rangle$  for acentric reflections are 0.5, 0.333 respectively for untwinned datasets, and 0.375, 0.2 for perfectly twinned datasets.

## 5 Model quality

### 5.1 Standard geometry

Bond lengths and bond angles in the following residue types are not validated in this section: ZOO, ZN, SO4, CU

The Z score for a bond length (or angle) is the number of standard deviations the observed value is removed from the expected value. A bond length (or angle) with  $|Z| > 5$  is considered an outlier worth inspection. RMSZ is the root-mean-square of all Z scores of the bond lengths (or angles).

Mol	Chain	Bond lengths		Bond angles	
		RMSZ	$\# Z  > 5$	RMSZ	$\# Z  > 5$
1	A	0.71	0/1185	0.80	0/1598
1	F	0.71	0/1175	0.76	0/1582
All	All	0.71	0/2360	0.78	0/3180

There are no bond length outliers.

There are no bond angle outliers.

There are no chirality outliers.

There are no planarity outliers.

### 5.2 Too-close contacts

In the following table, the Non-H and H(model) columns list the number of non-hydrogen atoms and hydrogen atoms in the chain respectively. The H(added) column lists the number of hydrogen atoms added and optimized by MolProbity. The Clashes column lists the number of clashes within the asymmetric unit, whereas Symm-Clashes lists symmetry related clashes.

Mol	Chain	Non-H	H(model)	H(added)	Clashes	Symm-Clashes
1	A	1149	0	1128	23	0
1	F	1135	0	1120	26	1
2	A	2	0	0	0	0
2	F	2	0	0	0	0
3	A	1	0	0	0	0
3	F	1	0	0	0	0
4	A	22	0	17	3	0
4	F	22	0	17	1	0
5	A	5	0	0	1	0
5	F	10	0	0	2	0
6	A	212	0	0	20	2

*Continued on next page...*



*Continued from previous page...*

Mol	Chain	Non-H	H(model)	H(added)	Clashes	Symm-Clashes
6	F	214	0	0	28	1
All	All	2775	0	2282	56	3

The all-atom clashscore is defined as the number of clashes found per 1000 atoms (including hydrogen atoms). The all-atom clashscore for this structure is 12.

All (56) close contacts within the same asymmetric unit are listed below, sorted by their clash magnitude.

Atom-1	Atom-2	Interatomic distance (Å)	Clash overlap (Å)
1:F:74:PRO:HD2	6:F:315:HOH:O	1.10	1.22
5:A:205:SO4:O2	6:A:302:HOH:O	1.67	1.09
1:A:43:HIS:CE1	6:A:304:HOH:O	2.12	1.02
1:F:43:HIS:CE1	6:F:306:HOH:O	2.15	0.98
1:A:144:LEU:HD11	6:A:304:HOH:O	1.63	0.98
5:F:201:SO4:O3	6:F:303:HOH:O	1.82	0.96
1:F:90:ASP:HA	6:F:304:HOH:O	1.65	0.95
1:F:132[B]:GLU:OE2	1:F:133:GLU:OE2	1.83	0.93
1:A:69[A]:ARG:NH1	6:A:303:HOH:O	1.98	0.91
1:F:52:ASP:OD1	1:F:54:THR:HG23	1.75	0.86
1:F:73:GLY:HA3	6:F:315:HOH:O	1.76	0.85
1:F:43:HIS:ND1	6:F:306:HOH:O	2.08	0.83
4:A:204:ZO0:H211	4:A:204:ZO0:H10	1.62	0.82
1:A:144:LEU:CD1	6:A:304:HOH:O	2.23	0.81
1:A:54[B]:THR:CG2	6:A:443:HOH:O	2.27	0.81
1:A:43:HIS:ND1	6:A:304:HOH:O	2.12	0.79
1:A:114:GLY:CA	6:F:310:HOH:O	2.33	0.77
4:A:204:ZO0:H222	6:A:410:HOH:O	1.86	0.74
1:F:89:ALA:O	6:F:304:HOH:O	2.04	0.74
5:F:205:SO4:O3	6:F:305:HOH:O	2.05	0.71
1:A:137:THR:HG21	6:A:459:HOH:O	1.91	0.70
1:A:54[B]:THR:HG21	6:A:443:HOH:O	1.91	0.69
1:A:111:CYS:SG	6:A:444:HOH:O	2.07	0.69
1:A:54[B]:THR:HG23	6:A:443:HOH:O	1.89	0.69
4:F:206:ZO0:H221	6:F:478:HOH:O	1.93	0.68
1:F:53:ASN:ND2	6:F:308:HOH:O	2.27	0.68
1:F:73:GLY:CA	6:F:315:HOH:O	2.33	0.67
1:F:114:GLY:CA	6:F:310:HOH:O	2.46	0.62
1:F:142:SER:HB2	6:F:434:HOH:O	2.01	0.61
1:F:111:CYS:SG	6:F:466:HOH:O	2.08	0.60
1:F:132[B]:GLU:OE2	1:F:133:GLU:CD	2.41	0.59
1:F:114:GLY:N	6:F:310:HOH:O	2.34	0.59

*Continued on next page...*

Continued from previous page...

Atom-1	Atom-2	Interatomic distance (Å)	Clash overlap (Å)
1:A:52:ASP:OD1	1:A:54[A]:THR:HG23	2.04	0.57
1:F:90:ASP:OD1	6:F:304:HOH:O	2.18	0.56
1:F:144:LEU:CD1	6:F:306:HOH:O	2.54	0.55
1:F:74:PRO:CD	6:F:315:HOH:O	1.95	0.55
1:F:144:LEU:HD11	6:F:306:HOH:O	2.06	0.54
1:A:69[A]:ARG:NH1	6:A:307:HOH:O	2.33	0.54
1:F:133:GLU:HG2	6:F:403[A]:HOH:O	2.07	0.53
1:F:113:ILE:HG22	6:F:310:HOH:O	2.11	0.51
1:A:122:LYS:HE3	6:A:404:HOH:O	2.12	0.50
1:A:142:SER:HB2	6:A:401:HOH:O	2.13	0.49
1:A:114:GLY:N	6:F:310:HOH:O	2.45	0.48
1:F:15:GLN:OE1	1:F:36:LYS:NZ	2.44	0.48
4:A:204:ZO0:C10	4:A:204:ZO0:H211	2.38	0.48
1:A:1:ALA:HB2	6:A:462:HOH:O	2.15	0.47
1:A:28:PRO:HG2	6:A:313:HOH:O	2.15	0.46
1:A:128:LYS:NZ	6:A:308:HOH:O	2.34	0.45
1:A:143:ARG:NE	6:A:319:HOH:O	2.51	0.43
1:F:40:GLU:OE2	6:F:307:HOH:O	2.21	0.42
1:A:1:ALA:CB	6:A:462:HOH:O	2.67	0.42
1:F:137:THR:HG21	6:F:462:HOH:O	2.20	0.41
1:A:114:GLY:HA3	6:F:310:HOH:O	2.14	0.41
1:F:89:ALA:C	6:F:304:HOH:O	2.57	0.41
1:A:54[A]:THR:HG21	6:F:392:HOH:O	2.20	0.40
1:F:151[B]:ILE:HG21	1:F:151[B]:ILE:HD13	1.84	0.40

All (3) symmetry-related close contacts are listed below. The label for Atom-2 includes the symmetry operator and encoded unit-cell translations to be applied.

Atom-1	Atom-2	Interatomic distance (Å)	Clash overlap (Å)
6:A:329:HOH:O	6:F:455:HOH:O[2_656]	2.01	0.19
1:F:17:ILE:CD1	1:F:128:LYS:O[2_655]	2.09	0.11
6:A:428:HOH:O	6:A:470:HOH:O[2_656]	2.11	0.09

## 5.3 Torsion angles ⓘ

### 5.3.1 Protein backbone ⓘ

In the following table, the Percentiles column shows the percent Ramachandran outliers of the chain as a percentile score with respect to all X-ray entries followed by that with respect to entries of similar resolution.

The Analysed column shows the number of residues for which the backbone conformation was analysed, and the total number of residues.

Mol	Chain	Analysed	Favoured	Allowed	Outliers	Percentiles	
1	A	158/153 (103%)	157 (99%)	1 (1%)	0	100	100
1	F	157/153 (103%)	157 (100%)	0	0	100	100
All	All	315/306 (103%)	314 (100%)	1 (0%)	0	100	100

There are no Ramachandran outliers to report.

### 5.3.2 Protein sidechains ⓘ

In the following table, the Percentiles column shows the percent sidechain outliers of the chain as a percentile score with respect to all X-ray entries followed by that with respect to entries of similar resolution.

The Analysed column shows the number of residues for which the sidechain conformation was analysed, and the total number of residues.

Mol	Chain	Analysed	Rotameric	Outliers	Percentiles	
1	A	125/118 (106%)	123 (98%)	2 (2%)	65	37
1	F	124/118 (105%)	124 (100%)	0	100	100
All	All	249/236 (106%)	247 (99%)	2 (1%)	83	69

All (2) residues with a non-rotameric sidechain are listed below:

Mol	Chain	Res	Type
1	A	109	ASP
1	A	132	GLU

Some sidechains can be flipped to improve hydrogen bonding and reduce clashes. All (2) such sidechains are listed below:

Mol	Chain	Res	Type
1	A	15	GLN
1	F	53	ASN

### 5.3.3 RNA ⓘ

There are no RNA molecules in this entry.

## 5.4 Non-standard residues in protein, DNA, RNA chains [i](#)

There are no non-standard protein/DNA/RNA residues in this entry.

## 5.5 Carbohydrates [i](#)

There are no carbohydrates in this entry.

## 5.6 Ligand geometry [i](#)

Of 11 ligands modelled in this entry, 6 are monoatomic - leaving 5 for Mogul analysis.

In the following table, the Counts columns list the number of bonds (or angles) for which Mogul statistics could be retrieved, the number of bonds (or angles) that are observed in the model and the number of bonds (or angles) that are defined in the Chemical Component Dictionary. The Link column lists molecule types, if any, to which the group is linked. The Z score for a bond length (or angle) is the number of standard deviations the observed value is removed from the expected value. A bond length (or angle) with  $|Z| > 2$  is considered an outlier worth inspection. RMSZ is the root-mean-square of all Z scores of the bond lengths (or angles).

Mol	Type	Chain	Res	Link	Bond lengths			Bond angles		
					Counts	RMSZ	$\# Z  > 2$	Counts	RMSZ	$\# Z  > 2$
4	ZO0	A	204	-	24,24,24	1.70	4 (16%)	30,35,35	2.50	13 (43%)
5	SO4	A	205	2	4,4,4	0.16	0	6,6,6	0.57	0
5	SO4	F	201	2	4,4,4	0.41	0	6,6,6	0.29	0
5	SO4	F	205	-	4,4,4	0.19	0	6,6,6	0.36	0
4	ZO0	F	206	-	24,24,24	1.50	4 (16%)	30,35,35	2.43	13 (43%)

In the following table, the Chirals column lists the number of chiral outliers, the number of chiral centers analysed, the number of these observed in the model and the number defined in the Chemical Component Dictionary. Similar counts are reported in the Torsion and Rings columns. '-' means no outliers of that kind were identified.

Mol	Type	Chain	Res	Link	Chirals	Torsions	Rings
4	ZO0	A	204	-	-	0/8/21/21	0/2/3/3
5	SO4	A	205	2	-	0/0/0/0	0/0/0/0
5	SO4	F	201	2	-	0/0/0/0	0/0/0/0
5	SO4	F	205	-	-	0/0/0/0	0/0/0/0
4	ZO0	F	206	-	-	0/8/21/21	0/2/3/3

All (8) bond length outliers are listed below:

Mol	Chain	Res	Type	Atoms	Z	Observed(Å)	Ideal(Å)
4	F	206	ZO0	C2-N1	2.18	1.36	1.33
4	F	206	ZO0	C4-N3	2.40	1.35	1.32
4	A	204	ZO0	C4-N15	2.56	1.44	1.36
4	F	206	ZO0	C4-C5	2.70	1.49	1.43
4	A	204	ZO0	C4-C5	3.18	1.51	1.43
4	A	204	ZO0	C4-N3	3.44	1.37	1.32
4	F	206	ZO0	C5-C6	4.61	1.50	1.42
4	A	204	ZO0	C5-C6	4.92	1.50	1.42

All (26) bond angle outliers are listed below:

Mol	Chain	Res	Type	Atoms	Z	Observed(°)	Ideal(°)
4	A	204	ZO0	C20-C21-N15	-6.56	105.04	113.32
4	F	206	ZO0	N1-C2-N3	-4.27	122.46	129.22
4	A	204	ZO0	N1-C2-N3	-4.25	122.50	129.22
4	F	206	ZO0	C17-C18-N19	-4.14	106.82	117.35
4	A	204	ZO0	C5-C4-N3	-3.67	114.57	122.64
4	A	204	ZO0	F13-C11-C2	-3.50	102.91	112.70
4	F	206	ZO0	C21-C20-N19	-3.49	106.43	116.27
4	F	206	ZO0	F13-C11-C2	-3.28	103.53	112.70
4	F	206	ZO0	C5-C4-N3	-2.86	116.36	122.64
4	A	204	ZO0	C17-C18-N19	-2.34	111.39	117.35
4	F	206	ZO0	C5-C6-N1	-2.20	120.46	122.83
4	A	204	ZO0	C21-C20-N19	-2.16	110.18	116.27
4	F	206	ZO0	C20-C21-N15	-2.07	110.71	113.32
4	A	204	ZO0	C11-C2-N3	2.11	118.31	115.19
4	F	206	ZO0	C5-C4-N15	2.54	126.19	121.04
4	A	204	ZO0	C11-C2-N1	2.97	119.12	114.96
4	A	204	ZO0	C5-C4-N15	3.30	127.72	121.04
4	A	204	ZO0	C22-N19-C18	3.32	118.34	110.52
4	F	206	ZO0	C2-N3-C4	3.53	124.70	114.53
4	F	206	ZO0	C2-N1-C6	3.62	119.63	115.61
4	A	204	ZO0	C22-N19-C20	3.64	119.08	110.52
4	F	206	ZO0	C22-N19-C18	3.75	119.35	110.52
4	A	204	ZO0	C2-N3-C4	3.76	125.36	114.53
4	A	204	ZO0	C2-N1-C6	3.76	119.80	115.61
4	F	206	ZO0	C22-N19-C20	4.25	120.52	110.52
4	F	206	ZO0	C11-C2-N1	4.76	121.63	114.96

There are no chirality outliers.

There are no torsion outliers.

There are no ring outliers.

5 monomers are involved in 7 short contacts:

Mol	Chain	Res	Type	Clashes	Symm-Clashes
4	A	204	ZO0	3	0
5	A	205	SO4	1	0
5	F	201	SO4	1	0
5	F	205	SO4	1	0
4	F	206	ZO0	1	0

## 5.7 Other polymers [i](#)

There are no such residues in this entry.

## 5.8 Polymer linkage issues [i](#)

There are no chain breaks in this entry.

## 6 Fit of model and data

### 6.1 Protein, DNA and RNA chains

Unable to reproduce the depositors R factor - this section is therefore empty.

### 6.2 Non-standard residues in protein, DNA, RNA chains

Unable to reproduce the depositors R factor - this section is therefore empty.

### 6.3 Carbohydrates

Unable to reproduce the depositors R factor - this section is therefore empty.

### 6.4 Ligands

Unable to reproduce the depositors R factor - this section is therefore empty.

### 6.5 Other polymers

Unable to reproduce the depositors R factor - this section is therefore empty.