



Full wwPDB X-ray Structure Validation Report ⓘ

Mar 13, 2018 – 12:33 pm GMT

PDB ID : 4WZK
Title : Crystal structure of P domain from norovirus strain Saga4 in complex with HBGA type H2 (triglycan)
Authors : Singh, B.K.; Hansman, G.S.
Deposited on : 2014-11-20
Resolution : 1.49 Å(reported)

This is a Full wwPDB X-ray Structure Validation Report for a publicly released PDB entry.

We welcome your comments at validation@mail.wwpdb.org

A user guide is available at

<https://www.wwpdb.org/validation/2017/XrayValidationReportHelp>

with specific help available everywhere you see the ⓘ symbol.

The following versions of software and data (see [references ⓘ](#)) were used in the production of this report:

MolProbity : 4.02b-467
Mogul : 1.7.3 (157068), CSD as539be (2018)
Xtriage (Phenix) : 1.13
EDS : trunk31020
Percentile statistics : 20171227.v01 (using entries in the PDB archive December 27th 2017)
Refmac : 5.8.0158
CCP4 : 7.0 (Gargrove)
Ideal geometry (proteins) : Engh & Huber (2001)
Ideal geometry (DNA, RNA) : Parkinson et al. (1996)
Validation Pipeline (wwPDB-VP) : trunk31020

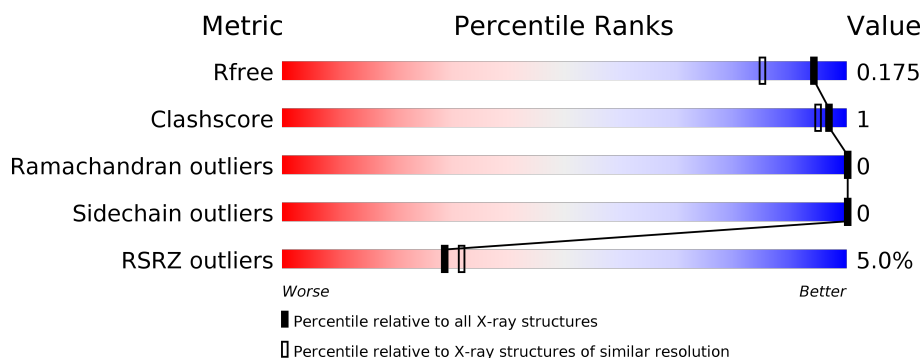
1 Overall quality at a glance

The following experimental techniques were used to determine the structure:

X-RAY DIFFRACTION

The reported resolution of this entry is 1.49 Å.

Percentile scores (ranging between 0-100) for global validation metrics of the entry are shown in the following graphic. The table shows the number of entries on which the scores are based.



Metric	Whole archive (#Entries)	Similar resolution (#Entries, resolution range(Å))
R_{free}	111664	2534 (1.50-1.50)
Clashscore	122126	2727 (1.50-1.50)
Ramachandran outliers	120053	2661 (1.50-1.50)
Sidechain outliers	120020	2659 (1.50-1.50)
RSRZ outliers	108989	2481 (1.50-1.50)

The table below summarises the geometric issues observed across the polymeric chains and their fit to the electron density. The red, orange, yellow and green segments on the lower bar indicate the fraction of residues that contain outliers for ≥ 3 , 2, 1 and 0 types of geometric quality criteria. A grey segment represents the fraction of residues that are not modelled. The numeric value for each fraction is indicated below the corresponding segment, with a dot representing fractions $\leq 5\%$. The upper red bar (where present) indicates the fraction of residues that have poor fit to the electron density. The numeric value is given above the bar.

Mol	Chain	Length	Quality of chain
1	A	309	<div> <div>6%</div> <div>98%</div> <div>.</div> </div>
1	B	309	<div> <div>4%</div> <div>97%</div> <div>.</div> </div>

2 Entry composition [i](#)

There are 6 unique types of molecules in this entry. The entry contains 9012 atoms, of which 3589 are hydrogens and 0 are deuteriums.

In the tables below, the ZeroOcc column contains the number of atoms modelled with zero occupancy, the AltConf column contains the number of residues with at least one atom in alternate conformation and the Trace column contains the number of residues modelled with at most 2 atoms.

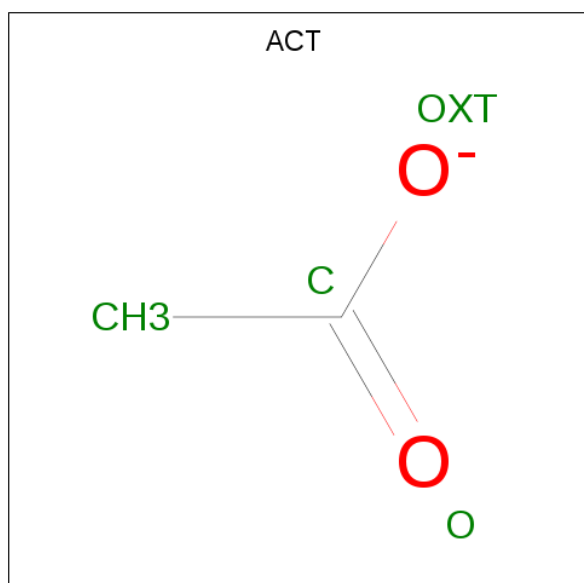
- Molecule 1 is a protein called VP1.

Mol	Chain	Residues	Atoms						ZeroOcc	AltConf	Trace
1	A	309	Total	C	H	N	O	S	0	2	0
			4166	1532	1757	414	453	10			
1	B	309	Total	C	H	N	O	S	0	0	0
			4226	1523	1832	408	453	10			

There are 6 discrepancies between the modelled and reference sequences:

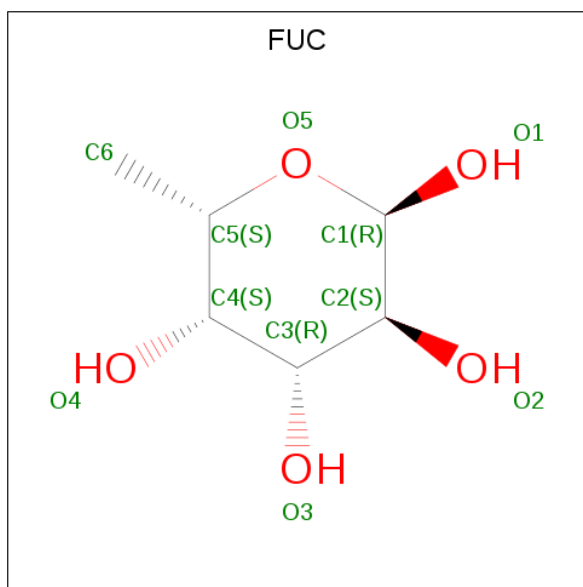
Chain	Residue	Modelled	Actual	Comment	Reference
A	222	THR	-	expression tag	UNP B5BTR7
A	223	GLY	-	expression tag	UNP B5BTR7
A	224	SER	-	expression tag	UNP B5BTR7
B	222	THR	-	expression tag	UNP B5BTR7
B	223	GLY	-	expression tag	UNP B5BTR7
B	224	SER	-	expression tag	UNP B5BTR7

- Molecule 2 is ACETATE ION (three-letter code: ACT) (formula: C₂H₃O₂).



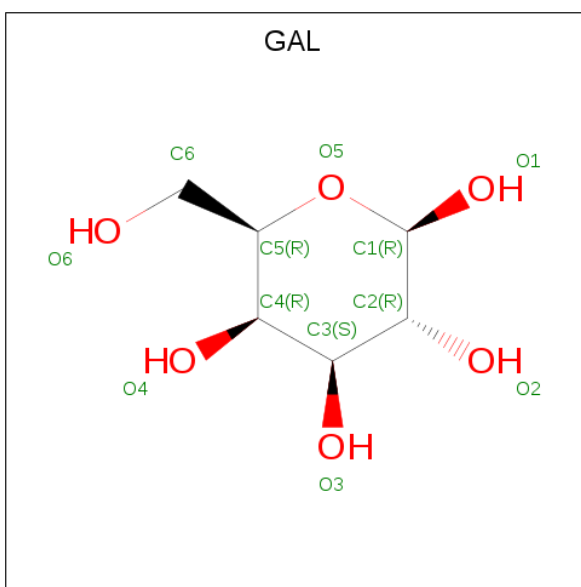
Mol	Chain	Residues	Atoms			ZeroOcc	AltConf
2	A	1	Total	C	O	0	0
			4	2	2		
2	B	1	Total	C	O	0	0
			4	2	2		

- Molecule 3 is ALPHA-L-FUCOSE (three-letter code: FUC) (formula: $C_6H_{12}O_5$).



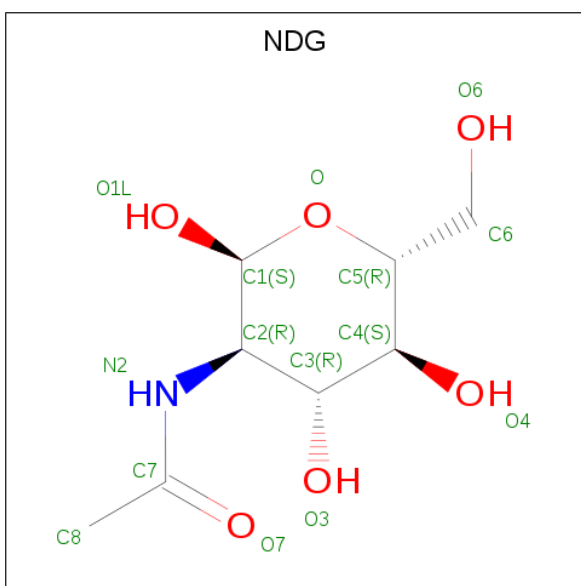
Mol	Chain	Residues	Atoms			ZeroOcc	AltConf
3	A	1	Total	C	O	0	0
			10	6	4		
3	B	1	Total	C	O	0	0
			10	6	4		

- Molecule 4 is BETA-D-GALACTOSE (three-letter code: GAL) (formula: $C_6H_{12}O_6$).



Mol	Chain	Residues	Atoms			ZeroOcc	AltConf
4	A	1	Total	C	O	0	0
			11	6	5		
4	B	1	Total	C	O	0	0
			11	6	5		

- Molecule 5 is 2-(ACETYLAMINO)-2-DEOXY-A-D-GLUCOPYRANOSE (three-letter code: NDG) (formula: $C_8H_{15}NO_6$).



Mol	Chain	Residues	Atoms				ZeroOcc	AltConf
5	A	1	Total	C	N	O	0	0
			15	8	1	6		

Continued on next page...

Continued from previous page...

Mol	Chain	Residues	Atoms				ZeroOcc	AltConf
5	B	1	Total	C	N	O	0	0
			15	8	1	6		

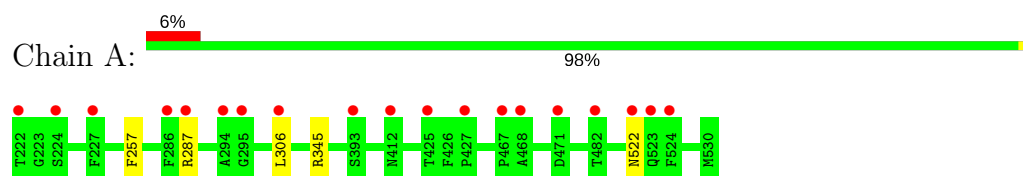
- Molecule 6 is water.

Mol	Chain	Residues	Atoms		ZeroOcc	AltConf
6	A	241	Total	O	0	0
			241	241		
6	B	299	Total	O	0	0
			299	299		

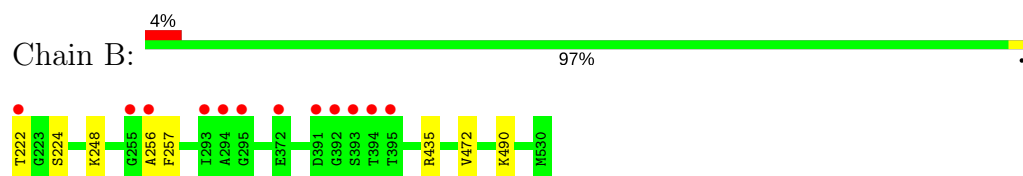
3 Residue-property plots [i](#)

These plots are drawn for all protein, RNA and DNA chains in the entry. The first graphic for a chain summarises the proportions of the various outlier classes displayed in the second graphic. The second graphic shows the sequence view annotated by issues in geometry and electron density. Residues are color-coded according to the number of geometric quality criteria for which they contain at least one outlier: green = 0, yellow = 1, orange = 2 and red = 3 or more. A red dot above a residue indicates a poor fit to the electron density ($RSRZ > 2$). Stretches of 2 or more consecutive residues without any outlier are shown as a green connector. Residues present in the sample, but not in the model, are shown in grey.

- Molecule 1: VP1



- Molecule 1: VP1



4 Data and refinement statistics

Property	Value	Source
Space group	C 1 2 1	Depositor
Cell constants a, b, c, α , β , γ	114.99Å 58.81Å 98.02Å 90.00° 108.11° 90.00°	Depositor
Resolution (Å)	29.66 – 1.49 46.58 – 1.47	Depositor EDS
% Data completeness (in resolution range)	97.6 (29.66-1.49) 97.4 (46.58-1.47)	Depositor EDS
R_{merge}	0.03	Depositor
R_{sym}	(Not available)	Depositor
$\langle I/\sigma(I) \rangle$ ¹	2.50 (at 1.47Å)	Xtriage
Refinement program	PHENIX	Depositor
R, R_{free}	0.139 , 0.173 0.141 , 0.175	Depositor DCC
R_{free} test set	5140 reflections (5.00%)	wwPDB-VP
Wilson B-factor (Å ²)	18.8	Xtriage
Anisotropy	0.077	Xtriage
Bulk solvent k_{sol} (e/Å ³), B_{sol} (Å ²)	0.40 , 45.9	EDS
L-test for twinning ²	$\langle L \rangle = 0.48$, $\langle L^2 \rangle = 0.31$	Xtriage
Estimated twinning fraction	No twinning to report.	Xtriage
F_o, F_c correlation	0.98	EDS
Total number of atoms	9012	wwPDB-VP
Average B, all atoms (Å ²)	25.0	wwPDB-VP

Xtriage's analysis on translational NCS is as follows: *The analyses of the Patterson function reveals a significant off-origin peak that is 52.14 % of the origin peak, indicating pseudo-translational symmetry. The chance of finding a peak of this or larger height randomly in a structure without pseudo-translational symmetry is equal to 5.0757e-05. The detected translational NCS is most likely also responsible for the elevated intensity ratio.*

¹Intensities estimated from amplitudes.

²Theoretical values of $\langle |L| \rangle$, $\langle L^2 \rangle$ for acentric reflections are 0.5, 0.333 respectively for untwinned datasets, and 0.375, 0.2 for perfectly twinned datasets.

5 Model quality

5.1 Standard geometry

Bond lengths and bond angles in the following residue types are not validated in this section: GAL, FUC, NDG, ACT

The Z score for a bond length (or angle) is the number of standard deviations the observed value is removed from the expected value. A bond length (or angle) with $|Z| > 5$ is considered an outlier worth inspection. RMSZ is the root-mean-square of all Z scores of the bond lengths (or angles).

Mol	Chain	Bond lengths		Bond angles	
		RMSZ	$\# Z > 5$	RMSZ	$\# Z > 5$
1	A	0.46	0/2487	0.61	0/3402
1	B	0.52	0/2466	0.62	0/3375
All	All	0.49	0/4953	0.62	0/6777

There are no bond length outliers.

There are no bond angle outliers.

There are no chirality outliers.

There are no planarity outliers.

5.2 Too-close contacts

In the following table, the Non-H and H(model) columns list the number of non-hydrogen atoms and hydrogen atoms in the chain respectively. The H(added) column lists the number of hydrogen atoms added and optimized by MolProbity. The Clashes column lists the number of clashes within the asymmetric unit, whereas Symm-Clashes lists symmetry related clashes.

Mol	Chain	Non-H	H(model)	H(added)	Clashes	Symm-Clashes
1	A	2409	1757	2324	3	1
1	B	2394	1832	2300	7	1
2	A	4	0	3	0	0
2	B	4	0	3	0	0
3	A	10	0	10	1	0
3	B	10	0	10	0	0
4	A	11	0	9	0	0
4	B	11	0	9	0	0
5	A	15	0	14	0	0
5	B	15	0	14	0	0
6	A	241	0	0	1	0

Continued on next page...

Continued from previous page...

Mol	Chain	Non-H	H(model)	H(added)	Clashes	Symm-Clashes
6	B	299	0	0	2	0
All	All	5423	3589	4696	10	1

The all-atom clashscore is defined as the number of clashes found per 1000 atoms (including hydrogen atoms). The all-atom clashscore for this structure is 1.

All (10) close contacts within the same asymmetric unit are listed below, sorted by their clash magnitude.

Atom-1	Atom-2	Interatomic distance (Å)	Clash overlap (Å)
1:A:257:PHE:O	6:A:701:HOH:O	2.11	0.68
1:B:222:THR:O	6:B:701:HOH:O	2.10	0.68
1:B:248:LYS:HE3	1:B:435:ARG:CD	2.24	0.67
1:B:257:PHE:O	6:B:974:HOH:O	2.12	0.67
1:B:222:THR:HG22	1:B:224:SER:H	1.65	0.61
1:B:248:LYS:HE3	1:B:435:ARG:HD2	1.82	0.59
1:A:287[B]:ARG:NH2	1:A:306:LEU:HD23	2.20	0.57
1:B:472:VAL:HG11	1:B:490:LYS:HG2	2.01	0.42
1:A:345:ARG:HB3	3:A:602:FUC:H2	2.03	0.41
1:B:248:LYS:HE3	1:B:435:ARG:HD3	2.03	0.40

All (1) symmetry-related close contacts are listed below. The label for Atom-2 includes the symmetry operator and encoded unit-cell translations to be applied.

Atom-1	Atom-2	Interatomic distance (Å)	Clash overlap (Å)
1:A:522:ASN:ND2	1:B:256:ALA:O[3_445]	2.16	0.04

5.3 Torsion angles ⓘ

5.3.1 Protein backbone ⓘ

In the following table, the Percentiles column shows the percent Ramachandran outliers of the chain as a percentile score with respect to all X-ray entries followed by that with respect to entries of similar resolution.

The Analysed column shows the number of residues for which the backbone conformation was analysed, and the total number of residues.

Mol	Chain	Analysed	Favoured	Allowed	Outliers	Percentiles
1	A	309/309 (100%)	304 (98%)	5 (2%)	0	100 100

Continued on next page...

Continued from previous page...

Mol	Chain	Analysed	Favoured	Allowed	Outliers	Percentiles	
1	B	307/309 (99%)	302 (98%)	5 (2%)	0	100	100
All	All	616/618 (100%)	606 (98%)	10 (2%)	0	100	100

There are no Ramachandran outliers to report.

5.3.2 Protein sidechains [i](#)

In the following table, the Percentiles column shows the percent sidechain outliers of the chain as a percentile score with respect to all X-ray entries followed by that with respect to entries of similar resolution.

The Analysed column shows the number of residues for which the sidechain conformation was analysed, and the total number of residues.

Mol	Chain	Analysed	Rotameric	Outliers	Percentiles	
1	A	268/268 (100%)	268 (100%)	0	100	100
1	B	266/268 (99%)	266 (100%)	0	100	100
All	All	534/536 (100%)	534 (100%)	0	100	100

There are no protein residues with a non-rotameric sidechain to report.

Some sidechains can be flipped to improve hydrogen bonding and reduce clashes. There are no such sidechains identified.

5.3.3 RNA [i](#)

There are no RNA molecules in this entry.

5.4 Non-standard residues in protein, DNA, RNA chains [i](#)

There are no non-standard protein/DNA/RNA residues in this entry.

5.5 Carbohydrates [i](#)

There are no carbohydrates in this entry.

5.6 Ligand geometry [i](#)

8 ligands are modelled in this entry.

In the following table, the Counts columns list the number of bonds (or angles) for which Mogul statistics could be retrieved, the number of bonds (or angles) that are observed in the model and the number of bonds (or angles) that are defined in the Chemical Component Dictionary. The Link column lists molecule types, if any, to which the group is linked. The Z score for a bond length (or angle) is the number of standard deviations the observed value is removed from the expected value. A bond length (or angle) with $|Z| > 2$ is considered an outlier worth inspection. RMSZ is the root-mean-square of all Z scores of the bond lengths (or angles).

Mol	Type	Chain	Res	Link	Bond lengths			Bond angles		
					Counts	RMSZ	$\# Z > 2$	Counts	RMSZ	$\# Z > 2$
2	ACT	A	601	-	1,3,3	1.70	0	0,3,3	0.00	-
3	FUC	A	602	4	9,10,11	0.30	0	13,14,16	0.59	0
4	GAL	A	603	3,5	11,11,12	0.77	0	15,15,17	0.81	0
5	NDG	A	604	4	15,15,15	0.41	0	21,21,21	0.50	0
2	ACT	B	601	-	1,3,3	1.59	0	0,3,3	0.00	-
3	FUC	B	602	4	9,10,11	0.29	0	13,14,16	0.59	0
4	GAL	B	603	3,5	11,11,12	0.81	0	15,15,17	0.77	0
5	NDG	B	604	4	15,15,15	0.41	0	21,21,21	0.51	0

In the following table, the Chirals column lists the number of chiral outliers, the number of chiral centers analysed, the number of these observed in the model and the number defined in the Chemical Component Dictionary. Similar counts are reported in the Torsion and Rings columns. '-' means no outliers of that kind were identified.

Mol	Type	Chain	Res	Link	Chirals	Torsions	Rings
2	ACT	A	601	-	-	0/0/0/0	0/0/0/0
3	FUC	A	602	4	-	0/0/17/20	0/1/1/1
4	GAL	A	603	3,5	-	0/2/19/22	0/1/1/1
5	NDG	A	604	4	-	0/6/26/26	0/1/1/1
2	ACT	B	601	-	-	0/0/0/0	0/0/0/0
3	FUC	B	602	4	-	0/0/17/20	0/1/1/1
4	GAL	B	603	3,5	-	0/2/19/22	0/1/1/1
5	NDG	B	604	4	-	0/6/26/26	0/1/1/1

There are no bond length outliers.

There are no bond angle outliers.

There are no chirality outliers.

There are no torsion outliers.

There are no ring outliers.

1 monomer is involved in 1 short contact:

Mol	Chain	Res	Type	Clashes	Symm-Clashes
3	A	602	FUC	1	0

5.7 Other polymers [i](#)

There are no such residues in this entry.

5.8 Polymer linkage issues [i](#)

There are no chain breaks in this entry.

6 Fit of model and data ⓘ

6.1 Protein, DNA and RNA chains ⓘ

In the following table, the column labelled ‘#RSRZ > 2’ contains the number (and percentage) of RSRZ outliers, followed by percent RSRZ outliers for the chain as percentile scores relative to all X-ray entries and entries of similar resolution. The OWAB column contains the minimum, median, 95th percentile and maximum values of the occupancy-weighted average B-factor per residue. The column labelled ‘Q < 0.9’ lists the number of (and percentage) of residues with an average occupancy less than 0.9.

Mol	Chain	Analysed	<RSRZ>	#RSRZ > 2		OWAB(Å ²)	Q < 0.9
1	A	309/309 (100%)	0.13	19 (6%)	21 23	13, 25, 39, 49	0
1	B	309/309 (100%)	-0.00	12 (3%)	39 44	11, 20, 39, 56	0
All	All	618/618 (100%)	0.06	31 (5%)	29 32	11, 23, 39, 56	0

All (31) RSRZ outliers are listed below:

Mol	Chain	Res	Type	RSRZ
1	B	222	THR	5.8
1	B	392	GLY	4.9
1	B	393	SER	4.5
1	A	295	GLY	3.9
1	B	255	GLY	3.5
1	A	468	ALA	3.5
1	A	425	THR	3.5
1	B	395	THR	3.5
1	A	222	THR	3.4
1	A	393	SER	3.4
1	B	394	THR	3.3
1	A	294	ALA	3.2
1	A	522	ASN	3.0
1	B	293	ILE	3.0
1	A	524	PHE	2.9
1	B	256	ALA	2.9
1	A	427	PRO	2.8
1	A	306	LEU	2.7
1	B	294	ALA	2.7
1	B	391	ASP	2.6
1	A	471	ASP	2.4
1	A	286	PHE	2.4
1	A	287[A]	ARG	2.4
1	A	523	GLN	2.4

Continued on next page...

Continued from previous page...

Mol	Chain	Res	Type	RSRZ
1	A	224	SER	2.3
1	A	227	PHE	2.2
1	A	412	ASN	2.2
1	B	372	GLU	2.1
1	A	467	PRO	2.1
1	B	295	GLY	2.1
1	A	482	THR	2.1

6.2 Non-standard residues in protein, DNA, RNA chains [i](#)

There are no non-standard protein/DNA/RNA residues in this entry.

6.3 Carbohydrates [i](#)

There are no carbohydrates in this entry.

6.4 Ligands [i](#)

In the following table, the Atoms column lists the number of modelled atoms in the group and the number defined in the chemical component dictionary. The B-factors column lists the minimum, median, 95th percentile and maximum values of B factors of atoms in the group. The column labelled 'Q<0.9' lists the number of atoms with occupancy less than 0.9.

Mol	Type	Chain	Res	Atoms	RSCC	RSR	B-factors(Å ²)	Q<0.9
5	NDG	A	604	15/15	0.80	0.28	39,59,73,89	0
5	NDG	B	604	15/15	0.83	0.26	42,60,74,88	0
2	ACT	B	601	4/4	0.87	0.12	30,33,40,50	0
3	FUC	A	602	10/11	0.87	0.10	25,27,36,37	0
4	GAL	A	603	11/12	0.90	0.34	33,41,63,70	0
4	GAL	B	603	11/12	0.92	0.20	32,41,65,68	0
3	FUC	B	602	10/11	0.92	0.09	27,29,33,33	0
2	ACT	A	601	4/4	0.94	0.14	28,36,47,55	0

6.5 Other polymers [i](#)

There are no such residues in this entry.