



# Full wwPDB X-ray Structure Validation Report ⓘ

Oct 29, 2019 – 04:20 PM EDT

PDB ID : 1X0S  
Title : Crystal structure of the 13-cis isomer of bacteriorhodopsin  
Authors : Nishikawa, T.; Murakami, M.; Kouyama, T.  
Deposited on : 2005-03-28  
Resolution : 2.50 Å(reported)

This is a Full wwPDB X-ray Structure Validation Report for a publicly released PDB entry.

We welcome your comments at [validation@mail.wwpdb.org](mailto:validation@mail.wwpdb.org)

A user guide is available at

<https://www.wwpdb.org/validation/2017/XrayValidationReportHelp>

with specific help available everywhere you see the ⓘ symbol.

---

The following versions of software and data (see [references ⓘ](#)) were used in the production of this report:

MolProbity : 4.02b-467  
Mogul : 1.8.0 (224370), CSD as540be (2019)  
Xtriage (Phenix) : 1.13  
EDS : 2.4  
buster-report : 1.1.7 (2018)  
Percentile statistics : 20171227.v01 (using entries in the PDB archive December 27th 2017)  
Refmac : 5.8.0158  
CCP4 : 7.0 (Gargrove)  
Ideal geometry (proteins) : Engh & Huber (2001)  
Ideal geometry (DNA, RNA) : Parkinson et al. (1996)  
Validation Pipeline (wwPDB-VP) : 2.4

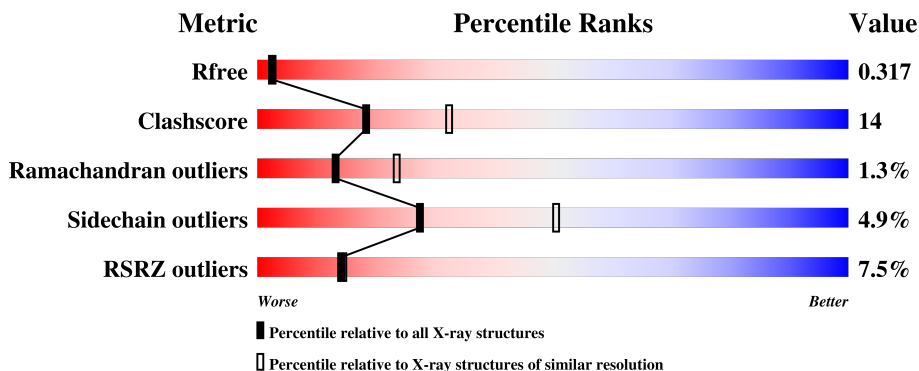
# 1 Overall quality at a glance

The following experimental techniques were used to determine the structure:

*X-RAY DIFFRACTION*

The reported resolution of this entry is 2.50 Å.

Percentile scores (ranging between 0-100) for global validation metrics of the entry are shown in the following graphic. The table shows the number of entries on which the scores are based.



Metric	Whole archive (#Entries)	Similar resolution (#Entries, resolution range(Å))
$R_{free}$	111664	4155 (2.50-2.50)
Clashscore	122126	4827 (2.50-2.50)
Ramachandran outliers	120053	4735 (2.50-2.50)
Sidechain outliers	120020	4737 (2.50-2.50)
RSRZ outliers	108989	4058 (2.50-2.50)

The table below summarises the geometric issues observed across the polymeric chains and their fit to the electron density. The red, orange, yellow and green segments on the lower bar indicate the fraction of residues that contain outliers for  $\geq 3$ , 2, 1 and 0 types of geometric quality criteria. A grey segment represents the fraction of residues that are not modelled. The numeric value for each fraction is indicated below the corresponding segment, with a dot representing fractions  $\leq 5\%$ . The upper red bar (where present) indicates the fraction of residues that have poor fit to the electron density. The numeric value is given above the bar.

Mol	Chain	Length	Quality of chain
1	A	248	

The following table lists non-polymeric compounds, carbohydrate monomers and non-standard residues in protein, DNA, RNA chains that are outliers for geometric or electron-density-fit criteria:

Mol	Type	Chain	Res	Chirality	Geometry	Clashes	Electron density
2	GLC	A	400	X	-	-	-

*Continued on next page...*

*Continued from previous page...*

Mol	Type	Chain	Res	Chirality	Geometry	Clashes	Electron density
5	SO4	A	700	-	-	X	-
7	L3P	A	260	-	-	-	X
7	L3P	A	290	-	-	-	X

## 2 Entry composition [i](#)

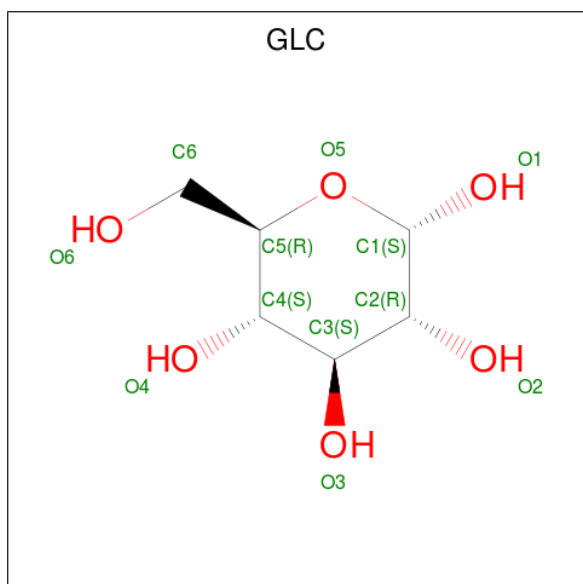
There are 9 unique types of molecules in this entry. The entry contains 2101 atoms, of which 0 are hydrogens and 0 are deuteriums.

In the tables below, the ZeroOcc column contains the number of atoms modelled with zero occupancy, the AltConf column contains the number of residues with at least one atom in alternate conformation and the Trace column contains the number of residues modelled with at most 2 atoms.

- Molecule 1 is a protein called Bacteriorhodopsin.

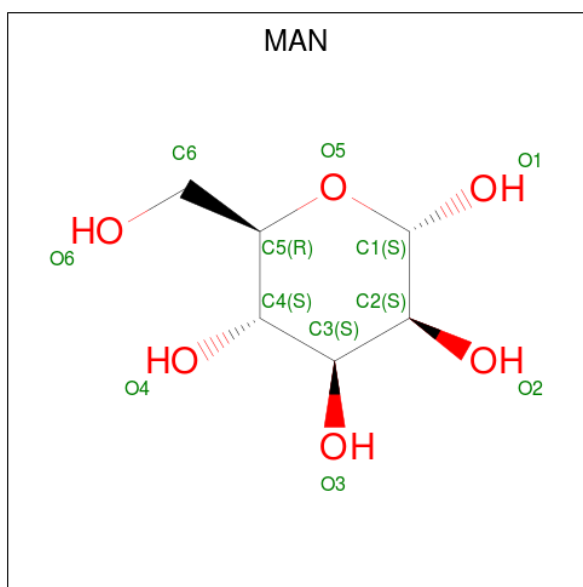
Mol	Chain	Residues	Atoms					ZeroOcc	AltConf	Trace
1	A	227	Total	C	N	O	S	0	0	0
			1756	1180	268	299	9			

- Molecule 2 is ALPHA-D-GLUCOSE (three-letter code: GLC) (formula: C<sub>6</sub>H<sub>12</sub>O<sub>6</sub>).



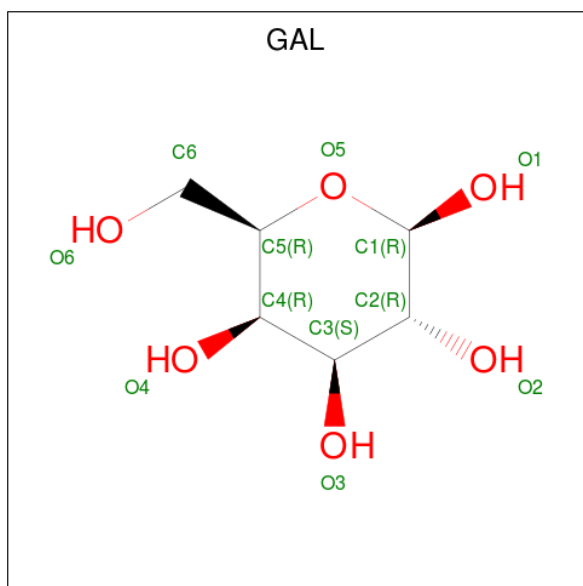
Mol	Chain	Residues	Atoms			ZeroOcc	AltConf
2	A	1	Total	C	O	0	0
			11	6	5		

- Molecule 3 is ALPHA-D-MANNOSE (three-letter code: MAN) (formula: C<sub>6</sub>H<sub>12</sub>O<sub>6</sub>).



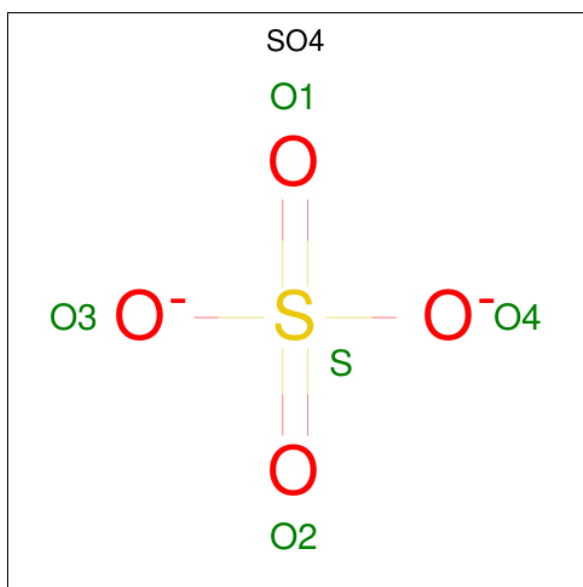
Mol	Chain	Residues	Atoms			ZeroOcc	AltConf
3	A	1	Total	C	O	0	0
			11	6	5		

- Molecule 4 is BETA-D-GALACTOSE (three-letter code: GAL) (formula:  $C_6H_{12}O_6$ ).



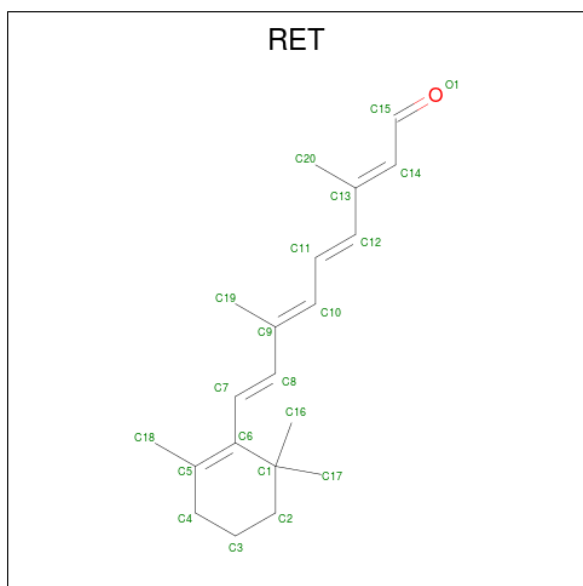
Mol	Chain	Residues	Atoms			ZeroOcc	AltConf
4	A	1	Total	C	O	0	0
			11	6	5		

- Molecule 5 is SULFATE ION (three-letter code: SO4) (formula:  $O_4S$ ).



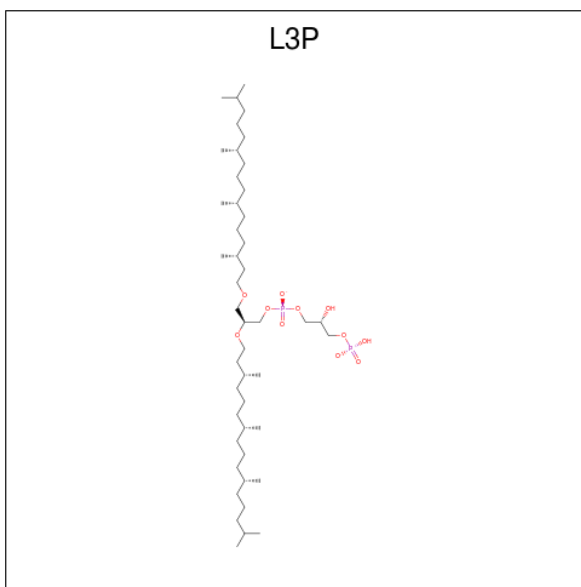
Mol	Chain	Residues	Atoms			ZeroOcc	AltConf
5	A	1	Total	O	S	0	0
			5	4	1		

- Molecule 6 is RETINAL (three-letter code: RET) (formula:  $C_{20}H_{28}O$ ).



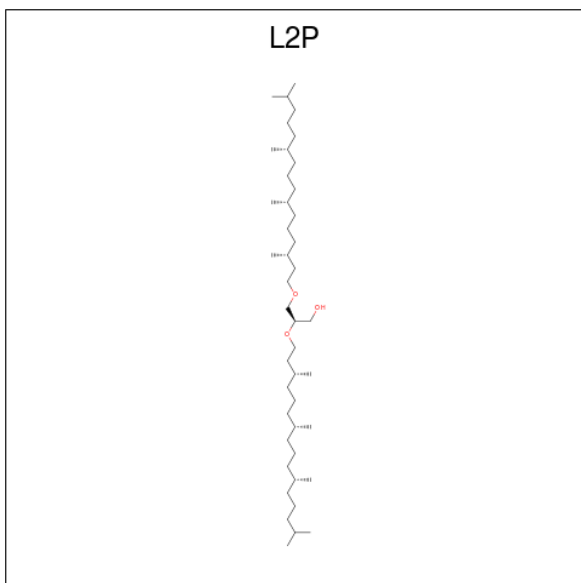
Mol	Chain	Residues	Atoms		ZeroOcc	AltConf
6	A	1	Total	C	0	0
			20	20		

- Molecule 7 is 2,3-DI-O-PHYTANLY-3-SN-GLYCERO-1-PHOSPHORYL-3'-SN-GLYCEROL-1'-PHOSPHATE (three-letter code: L3P) (formula:  $C_{46}H_{94}O_{11}P_2$ ).



Mol	Chain	Residues	Atoms				ZeroOcc	AltConf
			Total	C	O	P		
7	A	1	59	46	11	2	0	0
7	A	1	40	33	6	1	0	0
7	A	1	50	43	6	1	0	0
7	A	1	50	43	6	1	0	0

- Molecule 8 is 2,3-DI-PHYTANYL-GLYCEROL (three-letter code: L2P) (formula:  $C_{43}H_{88}O_3$ ).



Mol	Chain	Residues	Atoms			ZeroOcc	AltConf
8	A	1	Total	C	O	0	0
			46	43	3		

- Molecule 9 is water.

Mol	Chain	Residues	Atoms		ZeroOcc	AltConf
9	A	42	Total	O	0	0
			42	42		

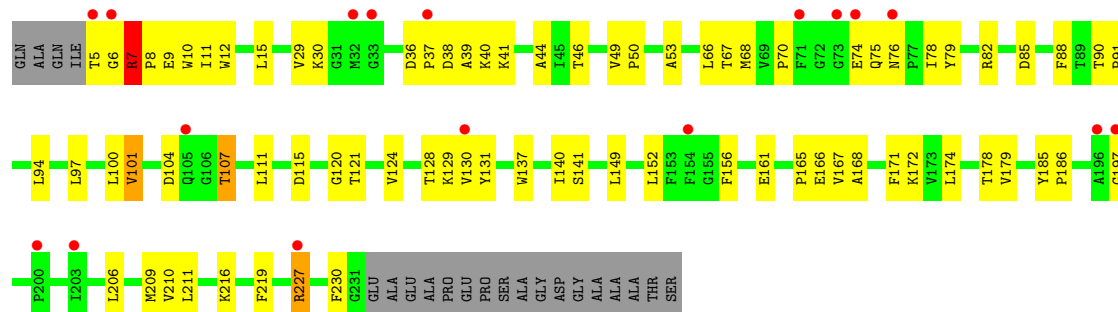


### 3 Residue-property plots [i](#)

These plots are drawn for all protein, RNA and DNA chains in the entry. The first graphic for a chain summarises the proportions of the various outlier classes displayed in the second graphic. The second graphic shows the sequence view annotated by issues in geometry and electron density. Residues are color-coded according to the number of geometric quality criteria for which they contain at least one outlier: green = 0, yellow = 1, orange = 2 and red = 3 or more. A red dot above a residue indicates a poor fit to the electron density ( $RSRZ > 2$ ). Stretches of 2 or more consecutive residues without any outlier are shown as a green connector. Residues present in the sample, but not in the model, are shown in grey.

#### • Molecule 1: Bacteriorhodopsin

Chain A: 



## 4 Data and refinement statistics

Property	Value	Source
Space group	P 6 2 2	Depositor
Cell constants a, b, c, $\alpha$ , $\beta$ , $\gamma$	101.98Å 101.98Å 112.10Å 90.00° 90.00° 120.00°	Depositor
Resolution (Å)	14.94 – 2.50 17.84 – 2.50	Depositor EDS
% Data completeness (in resolution range)	96.6 (14.94-2.50) 96.3 (17.84-2.50)	Depositor EDS
$R_{merge}$	0.06	Depositor
$R_{sym}$	0.06	Depositor
$\langle I/\sigma(I) \rangle$ <sup>1</sup>	2.36 (at 2.49Å)	Xtriage
Refinement program	CNS 1.1, XTALVIEW	Depositor
R, $R_{free}$	0.271 , 0.305 0.283 , 0.317	Depositor DCC
$R_{free}$ test set	615 reflections (5.12%)	wwPDB-VP
Wilson B-factor (Å <sup>2</sup> )	57.6	Xtriage
Anisotropy	0.399	Xtriage
Bulk solvent $k_{sol}$ (e/Å <sup>3</sup> ), $B_{sol}$ (Å <sup>2</sup> )	0.43 , 91.4	EDS
L-test for twinning <sup>2</sup>	$\langle  L  \rangle = 0.52$ , $\langle L^2 \rangle = 0.36$	Xtriage
Estimated twinning fraction	No twinning to report.	Xtriage
$F_o, F_c$ correlation	0.93	EDS
Total number of atoms	2101	wwPDB-VP
Average B, all atoms (Å <sup>2</sup> )	66.0	wwPDB-VP

Xtriage's analysis on translational NCS is as follows: *The largest off-origin peak in the Patterson function is 5.48% of the height of the origin peak. No significant pseudotranslation is detected.*

<sup>1</sup>Intensities estimated from amplitudes.

<sup>2</sup>Theoretical values of  $\langle |L| \rangle$ ,  $\langle L^2 \rangle$  for acentric reflections are 0.5, 0.333 respectively for untwinned datasets, and 0.375, 0.2 for perfectly twinned datasets.

## 5 Model quality

### 5.1 Standard geometry

Bond lengths and bond angles in the following residue types are not validated in this section: GLC, RET, L2P, GAL, SO4, L3P, MAN

The Z score for a bond length (or angle) is the number of standard deviations the observed value is removed from the expected value. A bond length (or angle) with  $|Z| > 5$  is considered an outlier worth inspection. RMSZ is the root-mean-square of all Z scores of the bond lengths (or angles).

Mol	Chain	Bond lengths		Bond angles	
		RMSZ	$\# Z  > 5$	RMSZ	$\# Z  > 5$
1	A	0.45	0/1804	0.62	0/2464

There are no bond length outliers.

There are no bond angle outliers.

There are no chirality outliers.

There are no planarity outliers.

### 5.2 Too-close contacts

In the following table, the Non-H and H(model) columns list the number of non-hydrogen atoms and hydrogen atoms in the chain respectively. The H(added) column lists the number of hydrogen atoms added and optimized by MolProbity. The Clashes column lists the number of clashes within the asymmetric unit, whereas Symm-Clashes lists symmetry related clashes.

Mol	Chain	Non-H	H(model)	H(added)	Clashes	Symm-Clashes
1	A	1756	0	1813	60	1
2	A	11	0	9	0	0
3	A	11	0	9	0	0
4	A	11	0	10	0	0
5	A	5	0	0	2	0
6	A	20	0	27	3	0
7	A	199	0	331	4	0
8	A	46	0	86	1	0
9	A	42	0	0	6	0
All	All	2101	0	2285	62	1

The all-atom clashscore is defined as the number of clashes found per 1000 atoms (including hydrogen atoms). The all-atom clashscore for this structure is 14.

All (62) close contacts within the same asymmetric unit are listed below, sorted by their clash magnitude.

Atom-1	Atom-2	Interatomic distance (Å)	Clash overlap (Å)
1:A:15:LEU:HB3	1:A:209:MET:HE2	1.52	0.90
1:A:227:ARG:HB3	1:A:227:ARG:HH11	1.46	0.79
1:A:38:ASP:HA	1:A:41:LYS:HE3	1.70	0.74
1:A:15:LEU:HD23	1:A:209:MET:HE1	1.68	0.73
1:A:6:GLY:HA2	1:A:9:GLU:OE1	1.88	0.73
1:A:174:LEU:O	1:A:178:THR:HG23	1.94	0.67
1:A:124:VAL:O	1:A:128:THR:HG23	1.96	0.66
1:A:44:ALA:HA	7:A:260:L3P:H111	1.79	0.64
1:A:15:LEU:HD23	1:A:209:MET:CE	2.28	0.63
1:A:186:PRO:HB3	6:A:250:RET:H183	1.80	0.63
1:A:107:THR:HG21	9:A:629:HOH:O	2.01	0.60
1:A:104:ASP:O	1:A:107:THR:HG23	2.01	0.60
1:A:128:THR:HA	5:A:700:SO4:O1	2.02	0.60
1:A:44:ALA:HA	7:A:260:L3P:H142	1.85	0.59
1:A:104:ASP:HB2	1:A:107:THR:HG22	1.84	0.58
1:A:12:TRP:CE3	1:A:206:LEU:HD23	2.38	0.58
1:A:7:ARG:HB3	1:A:8:PRO:CD	2.35	0.57
1:A:120:GLY:HA3	8:A:270:L2P:H491	1.87	0.56
1:A:165:PRO:HG2	9:A:630:HOH:O	2.06	0.56
1:A:46:THR:O	1:A:50:PRO:HD2	2.05	0.55
1:A:168:ALA:O	1:A:172:LYS:HG2	2.06	0.55
1:A:141:SER:OG	6:A:250:RET:H41	2.08	0.54
1:A:79:TYR:O	1:A:82:ARG:HG3	2.08	0.53
1:A:156:PHE:HB3	1:A:171:PHE:CZ	2.43	0.52
1:A:12:TRP:CD1	1:A:206:LEU:HB2	2.44	0.52
1:A:185:TYR:N	1:A:186:PRO:HD2	2.25	0.52
1:A:227:ARG:HD2	1:A:230:PHE:CD2	2.45	0.51
1:A:227:ARG:HB3	1:A:227:ARG:NH1	2.21	0.51
1:A:90:THR:OG1	1:A:91:PRO:HD3	2.11	0.51
1:A:12:TRP:CD2	1:A:206:LEU:HD23	2.46	0.50
1:A:82:ARG:NH1	9:A:605:HOH:O	2.46	0.49
7:A:260:L3P:H2	9:A:634:HOH:O	2.13	0.49
1:A:67:THR:HG22	1:A:78:ILE:O	2.13	0.49
1:A:149:LEU:HD22	1:A:179:VAL:HA	1.94	0.49
1:A:5:THR:HB	9:A:641:HOH:O	2.11	0.49
1:A:90:THR:HB	1:A:115:ASP:OD2	2.12	0.49
1:A:152:LEU:O	1:A:156:PHE:HB2	2.14	0.47
1:A:66:LEU:HB2	1:A:79:TYR:CE1	2.48	0.47
1:A:29:VAL:O	1:A:29:VAL:HG12	2.14	0.47
1:A:128:THR:HG21	1:A:137:TRP:CD1	2.50	0.47

*Continued on next page...*

Continued from previous page...

Atom-1	Atom-2	Interatomic distance (Å)	Clash overlap (Å)
1:A:130:VAL:O	1:A:131:TYR:C	2.54	0.46
1:A:5:THR:OG1	1:A:6:GLY:N	2.48	0.46
1:A:49:VAL:HG12	1:A:216:LYS:HD3	1.97	0.46
1:A:7:ARG:HB3	1:A:8:PRO:HD3	1.97	0.46
1:A:174:LEU:HD22	1:A:219:PHE:CE2	2.51	0.45
1:A:53:ALA:HA	1:A:85:ASP:OD2	2.17	0.45
1:A:121:THR:HG23	1:A:137:TRP:HE3	1.82	0.45
1:A:88:PHE:O	1:A:91:PRO:HD2	2.17	0.44
1:A:129:LYS:HB2	5:A:700:SO4:O4	2.17	0.44
1:A:10:TRP:CG	1:A:11:ILE:N	2.86	0.44
1:A:68:MET:HA	1:A:76:ASN:O	2.18	0.44
1:A:206:LEU:O	1:A:210:VAL:HG23	2.19	0.43
1:A:121:THR:HG21	1:A:140:ILE:HB	2.02	0.42
1:A:36:ASP:HB3	1:A:39:ALA:HB3	2.01	0.42
1:A:166:GLU:HG3	9:A:630:HOH:O	2.19	0.42
1:A:88:PHE:C	1:A:91:PRO:HD2	2.39	0.42
1:A:36:ASP:HA	1:A:37:PRO:HD2	1.93	0.42
1:A:100:LEU:CD1	1:A:167:VAL:HG13	2.50	0.41
6:A:250:RET:H191	6:A:250:RET:H11	1.94	0.41
1:A:40:LYS:HZ2	7:A:260:L3P:P1	2.43	0.41
1:A:101:VAL:O	1:A:101:VAL:HG13	2.20	0.40
1:A:70:PRO:HA	1:A:74:GLU:O	2.22	0.40

All (1) symmetry-related close contacts are listed below. The label for Atom-2 includes the symmetry operator and encoded unit-cell translations to be applied.

Atom-1	Atom-2	Interatomic distance (Å)	Clash overlap (Å)
1:A:75:GLN:NE2	1:A:75:GLN:NE2[12_555]	2.13	0.07

## 5.3 Torsion angles ⓘ

### 5.3.1 Protein backbone ⓘ

In the following table, the Percentiles column shows the percent Ramachandran outliers of the chain as a percentile score with respect to all X-ray entries followed by that with respect to entries of similar resolution.

The Analysed column shows the number of residues for which the backbone conformation was analysed, and the total number of residues.

Mol	Chain	Analysed	Favoured	Allowed	Outliers	Percentiles
1	A	225/248 (91%)	211 (94%)	11 (5%)	3 (1%)	13 23

All (3) Ramachandran outliers are listed below:

Mol	Chain	Res	Type
1	A	7	ARG
1	A	30	LYS
1	A	197	GLY

### 5.3.2 Protein sidechains [i](#)

In the following table, the Percentiles column shows the percent sidechain outliers of the chain as a percentile score with respect to all X-ray entries followed by that with respect to entries of similar resolution.

The Analysed column shows the number of residues for which the sidechain conformation was analysed, and the total number of residues.

Mol	Chain	Analysed	Rotameric	Outliers	Percentiles
1	A	182/194 (94%)	173 (95%)	9 (5%)	27 50

All (9) residues with a non-rotameric sidechain are listed below:

Mol	Chain	Res	Type
1	A	7	ARG
1	A	94	LEU
1	A	97	LEU
1	A	101	VAL
1	A	107	THR
1	A	111	LEU
1	A	161	GLU
1	A	211	LEU
1	A	227	ARG

Some sidechains can be flipped to improve hydrogen bonding and reduce clashes. All (1) such sidechains are listed below:

Mol	Chain	Res	Type
1	A	105	GLN

### 5.3.3 RNA ⓘ

There are no RNA molecules in this entry.

## 5.4 Non-standard residues in protein, DNA, RNA chains ⓘ

There are no non-standard protein/DNA/RNA residues in this entry.

## 5.5 Carbohydrates ⓘ

There are no carbohydrates in this entry.

## 5.6 Ligand geometry ⓘ

10 ligands are modelled in this entry.

In the following table, the Counts columns list the number of bonds (or angles) for which Mogul statistics could be retrieved, the number of bonds (or angles) that are observed in the model and the number of bonds (or angles) that are defined in the Chemical Component Dictionary. The Link column lists molecule types, if any, to which the group is linked. The Z score for a bond length (or angle) is the number of standard deviations the observed value is removed from the expected value. A bond length (or angle) with  $|Z| > 2$  is considered an outlier worth inspection. RMSZ is the root-mean-square of all Z scores of the bond lengths (or angles).

Mol	Type	Chain	Res	Link	Bond lengths			Bond angles		
					Counts	RMSZ	$\# Z  > 2$	Counts	RMSZ	$\# Z  > 2$
6	RET	A	250	1	20,20,21	2.48	6 (30%)	27,27,28	1.44	5 (18%)
7	L3P	A	260	-	58,58,58	1.25	8 (13%)	69,73,73	1.33	9 (13%)
8	L2P	A	270	2	45,45,45	1.59	12 (26%)	53,53,53	2.16	19 (35%)
7	L3P	A	280	-	39,39,58	1.97	12 (30%)	47,48,73	1.41	6 (12%)
7	L3P	A	290	-	49,49,58	1.91	19 (38%)	59,60,73	1.29	6 (10%)
7	L3P	A	300	-	49,49,58	1.72	14 (28%)	59,60,73	1.26	7 (11%)
2	GLC	A	400	8,3	11,11,12	2.60	5 (45%)	15,15,17	1.30	2 (13%)
3	MAN	A	410	2,4	11,11,12	2.21	6 (54%)	15,15,17	1.38	2 (13%)
4	GAL	A	420	3	11,11,12	2.71	6 (54%)	15,15,17	1.42	3 (20%)
5	SO4	A	700	-	4,4,4	0.38	0	6,6,6	0.31	0

In the following table, the Chirals column lists the number of chiral outliers, the number of chiral centers analysed, the number of these observed in the model and the number defined in the Chemical Component Dictionary. Similar counts are reported in the Torsion and Rings columns. '–' means no outliers of that kind were identified.

Mol	Type	Chain	Res	Link	Chirals	Torsions	Rings
6	RET	A	250	1	-	0/13/30/31	0/1/1/1
7	L3P	A	260	-	-	32/67/67/67	-
8	L2P	A	270	2	-	25/51/51/51	-
7	L3P	A	280	-	-	16/43/43/67	-
7	L3P	A	290	-	-	22/55/55/67	-
7	L3P	A	300	-	-	29/55/55/67	-
2	GLC	A	400	8,3	1/1/4/5	0/2/19/22	0/1/1/1
3	MAN	A	410	2,4	-	2/2/19/22	0/1/1/1
4	GAL	A	420	3	-	1/2/19/22	0/1/1/1

All (88) bond length outliers are listed below:

Mol	Chain	Res	Type	Atoms	Z	Observed(Å)	Ideal(Å)
6	A	250	RET	C1-C6	5.92	1.61	1.53
7	A	280	L3P	O2-C2	5.06	1.58	1.43
6	A	250	RET	C14-C13	4.80	1.37	1.33
2	A	400	GLC	O5-C5	4.65	1.53	1.43
7	A	300	L3P	P1-O3	4.62	1.75	1.60
4	A	420	GAL	O5-C5	4.58	1.52	1.43
7	A	290	L3P	P1-O3	4.57	1.74	1.60
2	A	400	GLC	O5-C1	4.20	1.50	1.43
7	A	280	L3P	C3-C2	4.00	1.63	1.50
7	A	280	L3P	P1-O2P	3.98	1.70	1.54
8	A	270	L2P	C26-C25	3.98	1.69	1.52
6	A	250	RET	C7-C6	3.80	1.58	1.45
4	A	420	GAL	C4-C5	3.79	1.61	1.53
6	A	250	RET	C5-C6	3.68	1.40	1.34
3	A	410	MAN	C2-C3	3.67	1.57	1.52
2	A	400	GLC	C1-C2	3.66	1.60	1.52
4	A	420	GAL	O5-C1	3.63	1.49	1.43
7	A	280	L3P	C1-C2	3.56	1.61	1.50
6	A	250	RET	C12-C13	3.55	1.53	1.45
2	A	400	GLC	C2-C3	3.55	1.57	1.52
4	A	420	GAL	C1-C2	3.42	1.60	1.52
7	A	290	L3P	C12-C11	3.39	1.62	1.50
3	A	410	MAN	O2-C2	3.37	1.50	1.43
7	A	290	L3P	C3-C2	3.34	1.61	1.50
7	A	300	L3P	C12-C11	3.30	1.62	1.50
7	A	300	L3P	C3-C2	3.27	1.60	1.50
7	A	260	L3P	P1-O3	3.21	1.72	1.59
7	A	260	L3P	O2-C41	3.20	1.51	1.43
4	A	420	GAL	C4-C3	3.17	1.60	1.52

*Continued on next page...*



*Continued from previous page...*

Mol	Chain	Res	Type	Atoms	Z	Observed(Å)	Ideal(Å)
6	A	250	RET	C2-C3	-3.06	1.44	1.52
7	A	290	L3P	C15-C13	2.97	1.68	1.52
7	A	300	L3P	P1-O2P	2.89	1.66	1.54
7	A	280	L3P	O2-C41	2.87	1.51	1.43
8	A	270	L2P	C42-C41	2.84	1.60	1.50
8	A	270	L2P	C25-C23	2.84	1.67	1.52
8	A	270	L2P	O2-C41	2.79	1.50	1.43
7	A	290	L3P	P1-O2P	2.79	1.65	1.54
4	A	420	GAL	C2-C3	2.78	1.56	1.52
8	A	270	L2P	C47-C48	2.77	1.67	1.52
7	A	290	L3P	C14-C13	2.75	1.61	1.52
3	A	410	MAN	O5-C1	2.72	1.48	1.43
7	A	290	L3P	C25-C23	2.71	1.67	1.52
7	A	280	L3P	C56-C55	2.71	1.63	1.52
8	A	270	L2P	C3-C2	2.70	1.58	1.50
7	A	280	L3P	P1-O3	2.66	1.68	1.60
7	A	260	L3P	C42-C41	2.65	1.59	1.50
7	A	280	L3P	O1-C1	2.59	1.49	1.42
7	A	290	L3P	O1-C11	2.59	1.53	1.42
7	A	300	L3P	C15-C13	2.59	1.66	1.52
7	A	290	L3P	C56-C55	2.55	1.63	1.52
3	A	410	MAN	C1-C2	2.55	1.58	1.52
7	A	290	L3P	C19-C18	2.53	1.61	1.52
7	A	260	L3P	O2-C2	2.52	1.50	1.43
7	A	290	L3P	C26-C27	2.51	1.63	1.52
7	A	290	L3P	C17-C18	2.51	1.65	1.52
3	A	410	MAN	C4-C5	2.50	1.58	1.53
7	A	290	L3P	C55-C53	2.47	1.65	1.52
7	A	300	L3P	C17-C18	2.46	1.65	1.52
7	A	300	L3P	O1-C11	2.46	1.52	1.42
7	A	300	L3P	C55-C53	2.43	1.65	1.52
7	A	260	L3P	C6-C5	2.40	1.60	1.51
7	A	280	L3P	C42-C41	2.39	1.58	1.50
7	A	300	L3P	C26-C27	2.38	1.62	1.52
7	A	300	L3P	C19-C18	2.31	1.60	1.52
7	A	290	L3P	C26-C25	2.31	1.62	1.52
7	A	280	L3P	C56-C57	2.29	1.62	1.52
3	A	410	MAN	O5-C5	2.27	1.48	1.43
7	A	280	L3P	C12-C11	2.26	1.58	1.50
7	A	290	L3P	O2-C41	2.26	1.49	1.43
7	A	260	L3P	P1-O4	2.25	1.68	1.59
7	A	260	L3P	P2-O6	2.24	1.67	1.60

*Continued on next page...*

*Continued from previous page...*

Mol	Chain	Res	Type	Atoms	Z	Observed(Å)	Ideal(Å)
7	A	290	L3P	C54-C53	2.24	1.60	1.52
7	A	300	L3P	C14-C13	2.23	1.60	1.52
7	A	280	L3P	C52-C53	2.21	1.64	1.52
7	A	300	L3P	C26-C25	2.21	1.61	1.52
8	A	270	L2P	C24-C23	2.18	1.59	1.52
7	A	300	L3P	C56-C55	2.17	1.61	1.52
7	A	290	L3P	C16-C15	2.14	1.61	1.52
8	A	270	L2P	O2-C2	2.12	1.49	1.43
8	A	270	L2P	C22-C23	2.11	1.63	1.52
8	A	270	L2P	O1-C1	2.09	1.48	1.42
2	A	400	GLC	C4-C5	2.08	1.57	1.53
7	A	290	L3P	C1-C2	2.07	1.57	1.50
8	A	270	L2P	C50-C48	2.05	1.63	1.52
7	A	260	L3P	O1-C1	2.05	1.47	1.42
8	A	270	L2P	C1-C2	2.03	1.57	1.50
7	A	300	L3P	C25-C23	2.03	1.63	1.52
7	A	290	L3P	C42-C41	2.01	1.57	1.50

All (59) bond angle outliers are listed below:

Mol	Chain	Res	Type	Atoms	Z	Observed(°)	Ideal(°)
8	A	270	L2P	O1-C1-C2	6.82	125.48	109.44
8	A	270	L2P	C29-C28-C27	5.68	147.34	111.52
7	A	290	L3P	O1-C1-C2	5.32	121.95	109.44
7	A	260	L3P	C41-O2-C2	5.05	127.00	115.40
7	A	280	L3P	C41-C42-C43	4.63	123.12	113.80
7	A	280	L3P	C11-C12-C13	4.14	122.14	113.80
7	A	280	L3P	C51-C50-C48	4.01	128.28	115.77
8	A	270	L2P	C41-C42-C43	3.94	121.73	113.80
8	A	270	L2P	O3-C3-C2	3.64	121.64	111.73
7	A	260	L3P	O2-C41-C42	3.62	116.38	108.77
8	A	270	L2P	C26-C27-C28	3.60	133.32	116.00
8	A	270	L2P	C54-C53-C52	-3.41	98.88	111.30
3	A	410	MAN	O6-C6-C5	3.40	123.09	111.29
8	A	270	L2P	C51-C52-C53	3.20	125.75	115.77
8	A	270	L2P	C11-C12-C13	-3.18	107.40	113.80
8	A	270	L2P	C16-C17-C18	-3.07	106.20	115.77
7	A	300	L3P	O1-C1-C2	3.05	116.61	109.44
8	A	270	L2P	C16-C15-C13	-3.03	106.32	115.77
7	A	300	L3P	C11-C12-C13	3.00	119.83	113.80
7	A	290	L3P	O2P-P1-O3	2.94	114.56	106.73
7	A	260	L3P	C26-C25-C23	-2.92	106.65	115.77

*Continued on next page...*

*Continued from previous page...*

Mol	Chain	Res	Type	Atoms	Z	Observed(°)	Ideal(°)
8	A	270	L2P	C41-O2-C2	2.90	122.06	115.40
7	A	260	L3P	C41-C42-C43	-2.87	108.03	113.80
4	A	420	GAL	O5-C5-C6	2.86	111.67	107.15
7	A	260	L3P	C46-C45-C43	-2.84	106.90	115.77
7	A	300	L3P	O2P-P1-O3	2.84	114.28	106.73
7	A	300	L3P	C21-C20-C18	2.75	124.33	115.77
7	A	290	L3P	C47-C46-C45	-2.63	101.00	113.25
7	A	260	L3P	C11-O1-C1	2.61	125.33	113.63
8	A	270	L2P	C30-C28-C29	-2.61	98.33	110.50
8	A	270	L2P	C22-C21-C20	-2.58	101.22	113.25
7	A	300	L3P	C47-C46-C45	-2.57	101.27	113.25
8	A	270	L2P	C52-C51-C50	-2.55	101.34	113.25
8	A	270	L2P	C19-C18-C20	-2.53	102.09	111.30
7	A	300	L3P	O4-P1-O3	2.52	113.44	106.73
2	A	400	GLC	O6-C6-C5	2.48	119.89	111.29
7	A	280	L3P	O2-C41-C42	2.47	113.96	108.77
3	A	410	MAN	C1-O5-C5	2.46	115.55	112.20
8	A	270	L2P	C14-C13-C12	-2.45	102.37	111.30
7	A	300	L3P	C16-C17-C18	2.44	123.37	115.77
7	A	290	L3P	O4-P1-O3	2.41	113.16	106.73
6	A	250	RET	C20-C13-C14	-2.41	116.42	123.66
7	A	260	L3P	P2-O6-C6	2.34	124.73	118.30
7	A	290	L3P	C11-C12-C13	2.33	118.49	113.80
6	A	250	RET	C11-C10-C9	-2.31	124.02	127.31
6	A	250	RET	C1-C6-C5	-2.29	119.39	122.59
4	A	420	GAL	C1-O5-C5	2.28	115.30	112.20
8	A	270	L2P	C49-C48-C47	2.21	119.35	111.30
8	A	270	L2P	C46-C47-C48	2.20	122.61	115.77
7	A	280	L3P	C51-C52-C53	2.17	122.53	115.77
6	A	250	RET	C7-C8-C9	-2.13	123.02	126.21
2	A	400	GLC	O5-C5-C6	-2.11	103.80	107.15
4	A	420	GAL	C6-C5-C4	-2.09	108.10	113.00
6	A	250	RET	C1-C6-C7	2.08	121.71	115.78
7	A	260	L3P	C56-C55-C53	2.08	122.25	115.77
7	A	260	L3P	C51-C50-C48	-2.05	109.37	115.77
7	A	290	L3P	C21-C20-C18	2.05	122.16	115.77
7	A	280	L3P	C56-C55-C53	2.05	122.15	115.77
8	A	270	L2P	C51-C50-C48	2.02	122.05	115.77

All (1) chirality outliers are listed below:

*Continued on next page...*

*Continued from previous page...*

Mol	Chain	Res	Type	Atom
-----	-------	-----	------	------

Mol	Chain	Res	Type	Atom
2	A	400	GLC	C1

All (127) torsion outliers are listed below:

Mol	Chain	Res	Type	Atoms
7	A	290	L3P	C3-O3-P1-O4
7	A	290	L3P	C3-O3-P1-O1P
7	A	290	L3P	C3-O3-P1-O2P
7	A	260	L3P	C4-O4-P1-O3
7	A	260	L3P	C4-O4-P1-O1P
7	A	260	L3P	C4-O4-P1-O2P
8	A	270	L2P	C24-C23-C25-C26
7	A	280	L3P	C49-C48-C50-C51
7	A	300	L3P	C42-C41-O2-C2
7	A	300	L3P	C3-O3-P1-O4
7	A	300	L3P	C3-O3-P1-O1P
7	A	300	L3P	C3-O3-P1-O2P
7	A	300	L3P	C16-C17-C18-C19
7	A	290	L3P	C53-C55-C56-C57
3	A	410	MAN	O5-C5-C6-O6
7	A	260	L3P	O4-C4-C5-C6
7	A	260	L3P	C20-C21-C22-C23
7	A	280	L3P	C55-C56-C57-C58
7	A	300	L3P	C50-C51-C52-C53
7	A	260	L3P	C23-C25-C26-C27
7	A	300	L3P	C23-C25-C26-C27
7	A	290	L3P	C18-C20-C21-C22
7	A	260	L3P	C52-C53-C55-C56
7	A	280	L3P	C45-C46-C47-C48
7	A	300	L3P	C45-C46-C47-C48
7	A	260	L3P	C18-C20-C21-C22
7	A	260	L3P	C48-C50-C51-C52
8	A	270	L2P	C55-C56-C57-C58
7	A	260	L3P	C53-C55-C56-C57
3	A	410	MAN	C4-C5-C6-O6
8	A	270	L2P	C25-C26-C27-C28
7	A	260	L3P	O4-C4-C5-O5
7	A	290	L3P	C50-C51-C52-C53
7	A	290	L3P	C26-C27-C28-C30
7	A	260	L3P	C26-C27-C28-C29
7	A	280	L3P	C16-C17-C18-C20

*Continued on next page...*

*Continued from previous page...*

Mol	Chain	Res	Type	Atoms
7	A	300	L3P	C43-C45-C46-C47
8	A	270	L2P	C14-C13-C15-C16
7	A	280	L3P	C44-C43-C45-C46
7	A	300	L3P	C44-C43-C45-C46
8	A	270	L2P	C15-C16-C17-C18
7	A	300	L3P	C56-C57-C58-C59
7	A	300	L3P	C15-C16-C17-C18
8	A	270	L2P	C26-C27-C28-C30
7	A	280	L3P	C16-C17-C18-C19
7	A	290	L3P	C26-C27-C28-C29
7	A	300	L3P	C56-C57-C58-C60
7	A	260	L3P	C26-C27-C28-C30
8	A	270	L2P	C26-C27-C28-C29
7	A	260	L3P	C47-C48-C50-C51
7	A	280	L3P	C12-C13-C15-C16
7	A	280	L3P	C42-C43-C45-C46
7	A	300	L3P	C42-C43-C45-C46
8	A	270	L2P	C2-C1-O1-C11
4	A	420	GAL	O5-C5-C6-O6
7	A	280	L3P	C56-C57-C58-C60
7	A	260	L3P	C49-C48-C50-C51
7	A	260	L3P	C54-C53-C55-C56
8	A	270	L2P	C51-C52-C53-C54
7	A	280	L3P	C14-C13-C15-C16
7	A	280	L3P	C43-C45-C46-C47
7	A	290	L3P	C15-C16-C17-C18
7	A	280	L3P	C56-C57-C58-C59
8	A	270	L2P	C11-C12-C13-C14
8	A	270	L2P	C45-C46-C47-C48
7	A	290	L3P	C56-C57-C58-C59
7	A	260	L3P	C21-C22-C23-C25
8	A	270	L2P	C12-C13-C15-C16
8	A	270	L2P	C51-C52-C53-C55
7	A	300	L3P	C16-C17-C18-C20
7	A	260	L3P	C21-C22-C23-C24
7	A	260	L3P	C24-C23-C25-C26
7	A	260	L3P	C44-C43-C45-C46
8	A	270	L2P	C16-C17-C18-C19
7	A	290	L3P	C48-C50-C51-C52
7	A	290	L3P	C1-C2-C3-O3
7	A	260	L3P	C1-C2-C3-O3
7	A	290	L3P	C56-C57-C58-C60

*Continued on next page...*

*Continued from previous page...*

Mol	Chain	Res	Type	Atoms
7	A	300	L3P	C41-C42-C43-C45
7	A	300	L3P	C26-C27-C28-C29
7	A	290	L3P	O1-C1-C2-C3
7	A	260	L3P	C25-C26-C27-C28
7	A	260	L3P	C17-C18-C20-C21
7	A	260	L3P	C22-C23-C25-C26
8	A	270	L2P	C16-C17-C18-C20
8	A	270	L2P	C22-C23-C25-C26
7	A	280	L3P	C47-C48-C50-C51
7	A	300	L3P	C46-C47-C48-C50
7	A	260	L3P	C41-C42-C43-C44
7	A	300	L3P	O1-C11-C12-C13
7	A	260	L3P	C41-C42-C43-C45
8	A	270	L2P	C11-C12-C13-C15
7	A	260	L3P	O2-C2-C3-O3
7	A	290	L3P	O1-C1-C2-O2
7	A	300	L3P	C26-C27-C28-C30
7	A	300	L3P	C2-C1-O1-C11
7	A	290	L3P	C52-C53-C55-C56
7	A	260	L3P	C42-C43-C45-C46
7	A	300	L3P	C51-C52-C53-C55
7	A	290	L3P	O2-C2-C3-O3
7	A	290	L3P	C25-C26-C27-C28
8	A	270	L2P	O1-C1-C2-O2
7	A	260	L3P	C19-C18-C20-C21
7	A	300	L3P	C46-C47-C48-C49
8	A	270	L2P	C12-C11-O1-C1
7	A	300	L3P	C12-C11-O1-C1
7	A	300	L3P	C41-C42-C43-C44
7	A	260	L3P	C3-O3-P1-O4
8	A	270	L2P	O1-C1-C2-C3
8	A	270	L2P	C56-C57-C58-C60
7	A	300	L3P	C49-C48-C50-C51
7	A	300	L3P	C51-C52-C53-C54
7	A	290	L3P	C42-C41-O2-C2
7	A	260	L3P	C42-C41-O2-C2
8	A	270	L2P	C42-C41-O2-C2
7	A	280	L3P	C42-C41-O2-C2
8	A	270	L2P	C56-C57-C58-C59
7	A	280	L3P	C50-C51-C52-C53
7	A	300	L3P	O1-C1-C2-O2
7	A	290	L3P	C54-C53-C55-C56

*Continued on next page...*

*Continued from previous page...*

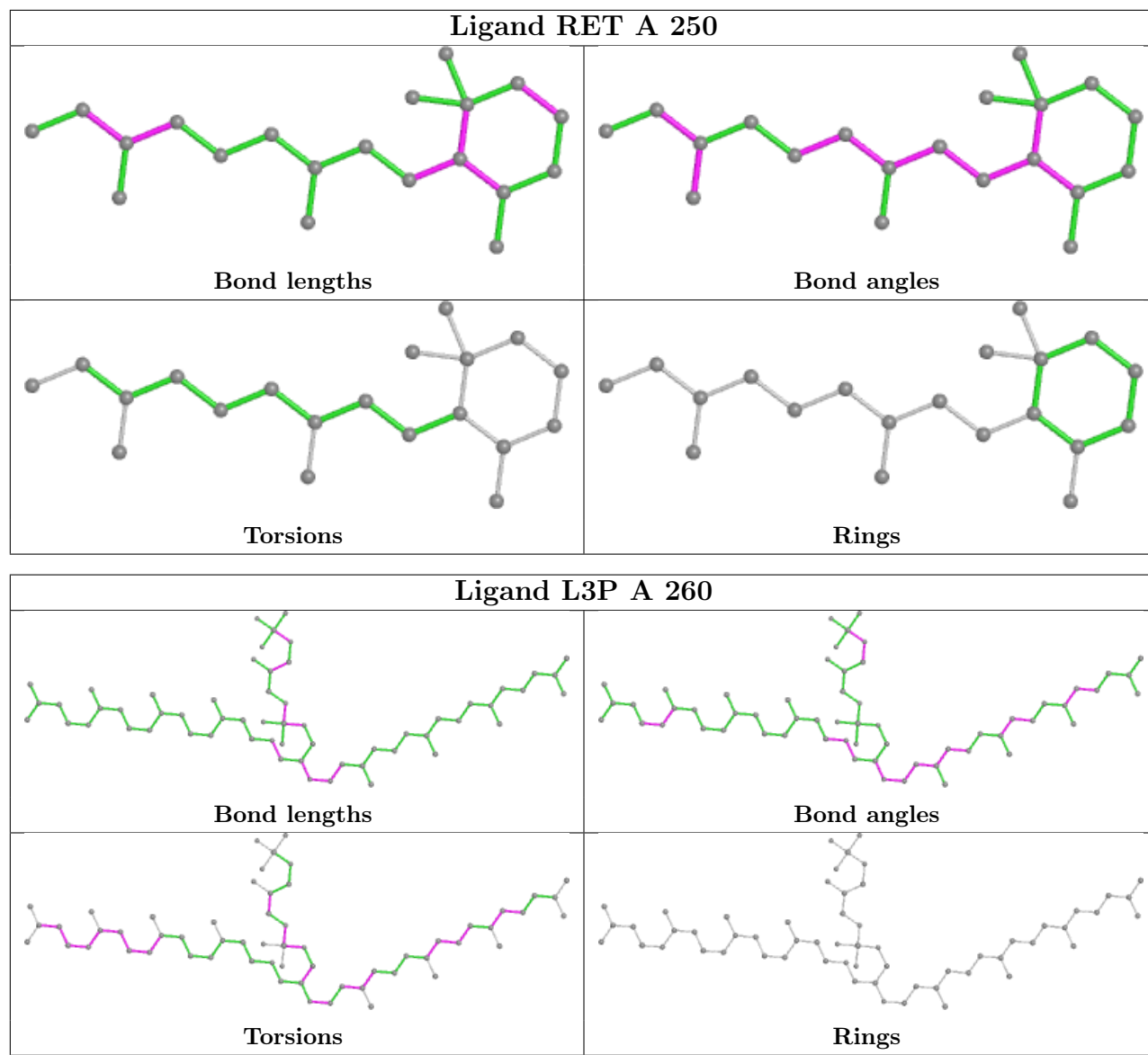
Mol	Chain	Res	Type	Atoms
8	A	270	L2P	C46-C47-C48-C49
7	A	290	L3P	C42-C43-C45-C46
7	A	300	L3P	C47-C48-C50-C51
7	A	260	L3P	C50-C51-C52-C53
7	A	280	L3P	C12-C11-O1-C1
7	A	290	L3P	C44-C43-C45-C46
8	A	270	L2P	C46-C47-C48-C50

There are no ring outliers.

3 monomers are involved in 8 short contacts:

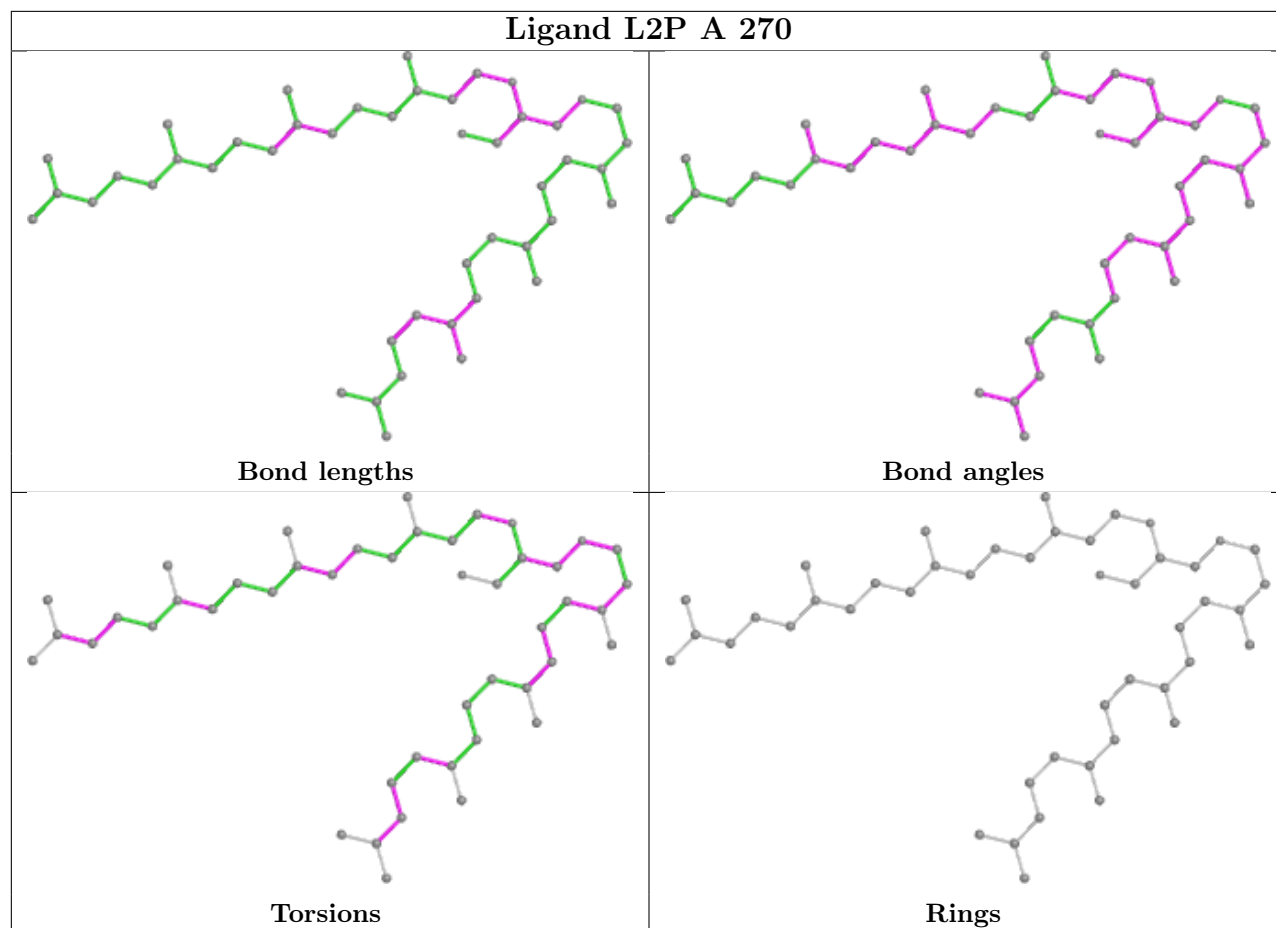
Mol	Chain	Res	Type	Clashes	Symm-Clashes
6	A	250	RET	3	0
7	A	260	L3P	4	0
8	A	270	L2P	1	0

The following is a two-dimensional graphical depiction of Mogul quality analysis of bond lengths, bond angles, torsion angles, and ring geometry for all instances of the Ligand of Interest. In addition, ligands with molecular weight > 250 and outliers as shown on the validation Tables will also be included. For torsion angles, if less than 5% of the Mogul distribution of torsion angles is within 10 degrees of the torsion angle in question, then that torsion angle is considered an outlier. Any bond that is central to one or more torsion angles identified as an outlier by Mogul will be highlighted in the graph. For rings, the root-mean-square deviation (RMSD) between the ring in question and similar rings identified by Mogul is calculated over all ring torsion angles. If the average RMSD is greater than 60 degrees and the minimal RMSD between the ring in question and any Mogul-identified rings is also greater than 60 degrees, then that ring is considered an outlier. The outliers are highlighted in purple. The color gray indicates Mogul did not find sufficient equivalents in the CSD to analyse the geometry.

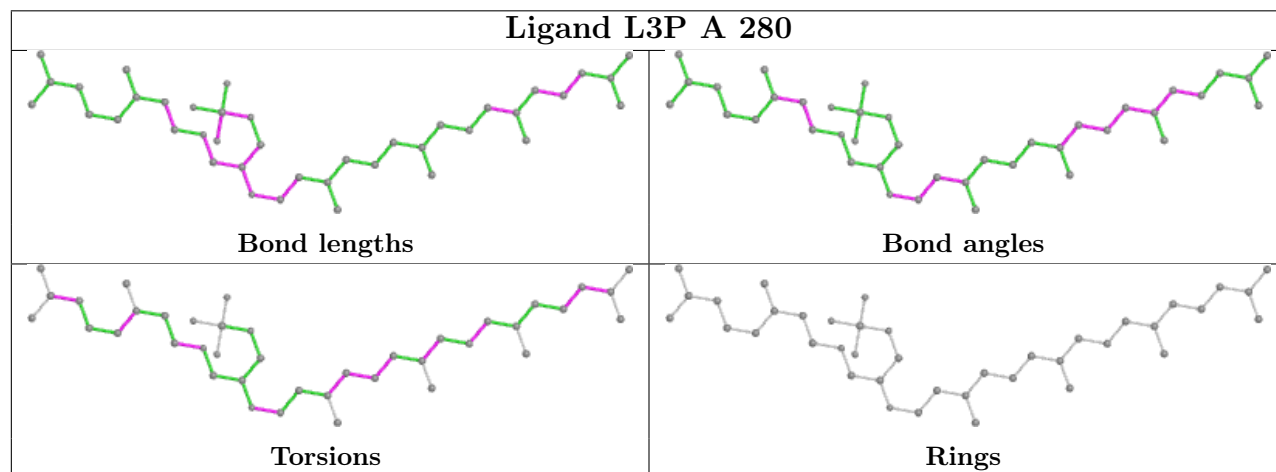


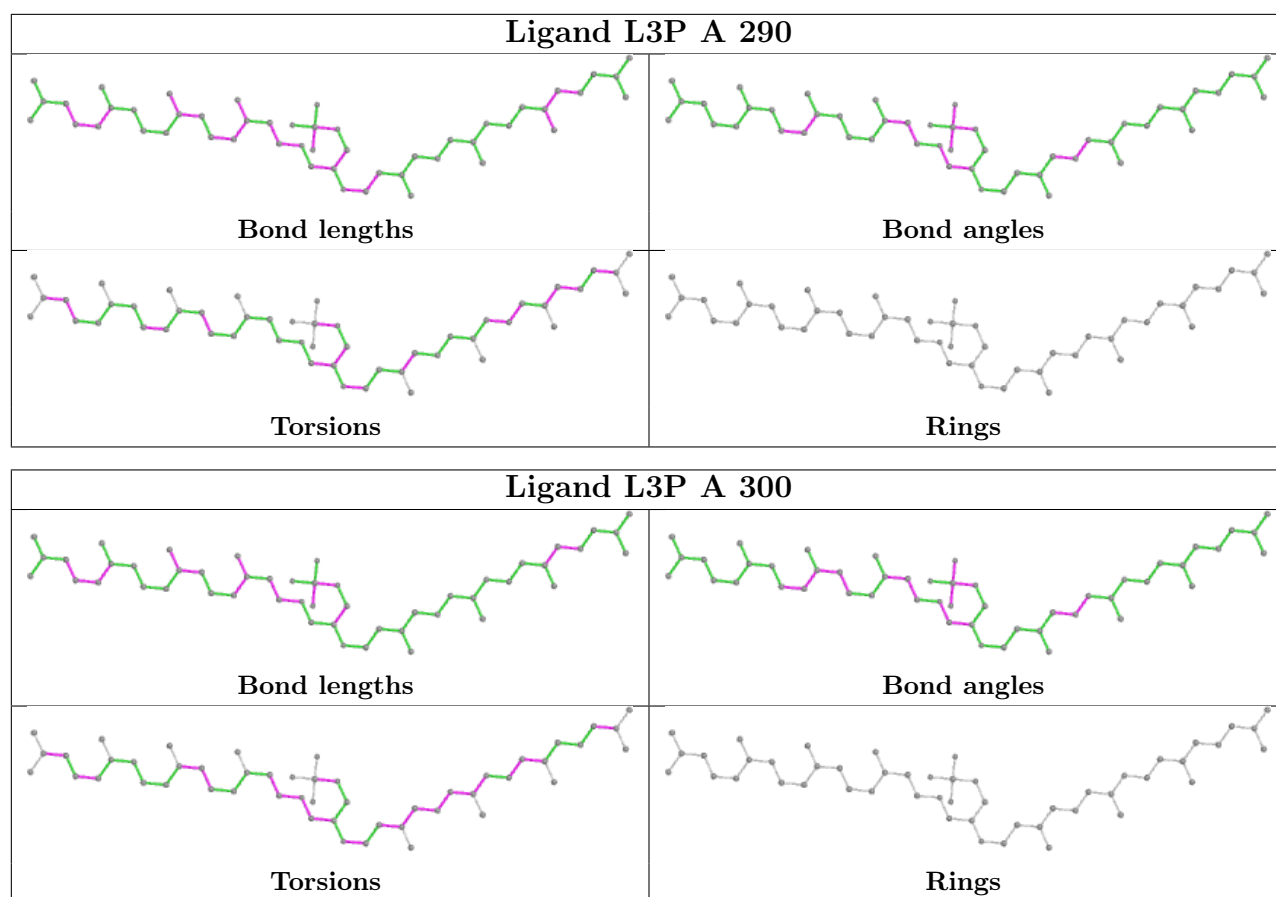


## Ligand L2P A 270



## Ligand L3P A 280





## 5.7 Other polymers [i](#)

There are no such residues in this entry.

## 5.8 Polymer linkage issues [i](#)

There are no chain breaks in this entry.

## 6 Fit of model and data [i](#)

### 6.1 Protein, DNA and RNA chains [i](#)

In the following table, the column labelled ‘#RSRZ > 2’ contains the number (and percentage) of RSRZ outliers, followed by percent RSRZ outliers for the chain as percentile scores relative to all X-ray entries and entries of similar resolution. The OWAB column contains the minimum, median, 95<sup>th</sup> percentile and maximum values of the occupancy-weighted average B-factor per residue. The column labelled ‘Q < 0.9’ lists the number of (and percentage) of residues with an average occupancy less than 0.9.

Mol	Chain	Analysed	<RSRZ>	#RSRZ>2	OWAB(Å <sup>2</sup> )	Q<0.9
1	A	227/248 (91%)	0.26	17 (7%) 14 14	41, 57, 79, 96	0

All (17) RSRZ outliers are listed below:

Mol	Chain	Res	Type	RSRZ
1	A	6	GLY	6.8
1	A	73	GLY	3.8
1	A	5	THR	3.6
1	A	203	ILE	3.5
1	A	71	PHE	3.5
1	A	32	MET	3.4
1	A	37	PRO	3.3
1	A	227	ARG	3.2
1	A	196	ALA	2.8
1	A	74	GLU	2.8
1	A	200	PRO	2.8
1	A	33	GLY	2.7
1	A	130	VAL	2.4
1	A	197	GLY	2.2
1	A	76	ASN	2.2
1	A	105	GLN	2.1
1	A	154	PHE	2.1

### 6.2 Non-standard residues in protein, DNA, RNA chains [i](#)

There are no non-standard protein/DNA/RNA residues in this entry.

### 6.3 Carbohydrates [i](#)

There are no carbohydrates in this entry.

## 6.4 Ligands ⓘ

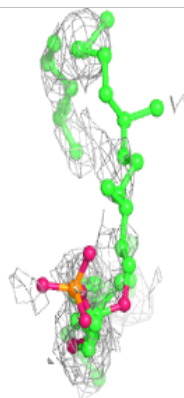
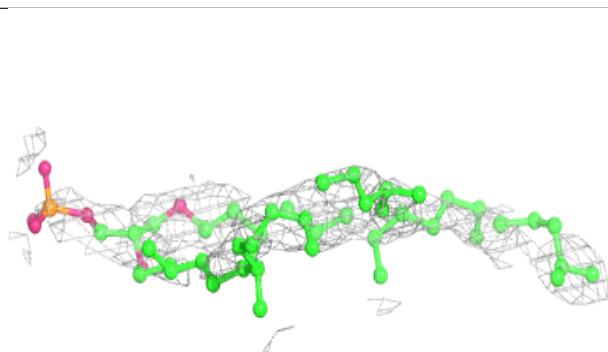
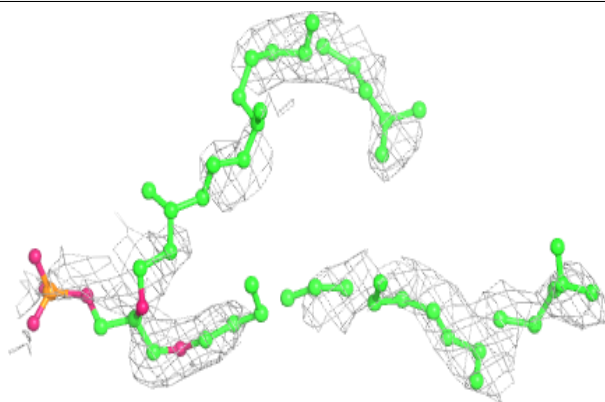
In the following table, the Atoms column lists the number of modelled atoms in the group and the number defined in the chemical component dictionary. The B-factors column lists the minimum, median, 95<sup>th</sup> percentile and maximum values of B factors of atoms in the group. The column labelled 'Q< 0.9' lists the number of atoms with occupancy less than 0.9.

Mol	Type	Chain	Res	Atoms	RSCC	RSR	B-factors(Å <sup>2</sup> )	Q<0.9
7	L3P	A	290	50/59	0.37	0.46	130,135,147,147	0
7	L3P	A	300	50/59	0.46	0.39	118,126,134,135	0
7	L3P	A	280	40/59	0.51	0.35	101,118,127,127	0
7	L3P	A	260	59/59	0.63	0.47	73,99,108,109	13
4	GAL	A	420	11/12	0.64	0.31	109,111,112,114	0
8	L2P	A	270	46/46	0.70	0.32	78,96,118,118	0
2	GLC	A	400	11/12	0.72	0.36	102,105,107,107	0
3	MAN	A	410	11/12	0.79	0.27	103,106,107,107	0
5	SO4	A	700	5/5	0.88	0.47	112,113,114,114	0
6	RET	A	250	20/21	0.94	0.24	47,50,52,53	0

The following is a graphical depiction of the model fit to experimental electron density of all instances of the Ligand of Interest. In addition, ligands with molecular weight > 250 and outliers as shown on the geometry validation Tables will also be included. Each fit is shown from different orientation to approximate a three-dimensional view.

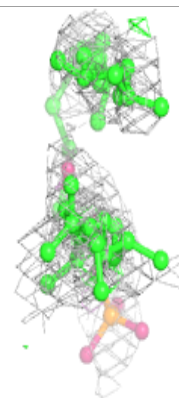
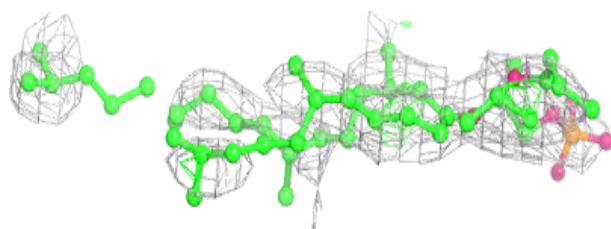
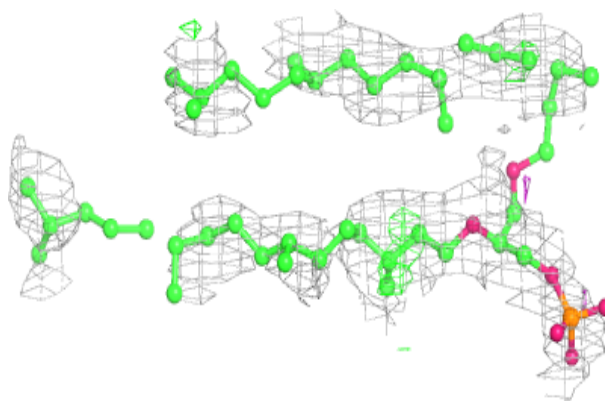
### Electron density around L3P A 290:

2mF<sub>o</sub>-DF<sub>c</sub> (at 0.7 rmsd) in gray  
mF<sub>o</sub>-DF<sub>c</sub> (at 3 rmsd) in purple (negative)  
and green (positive)

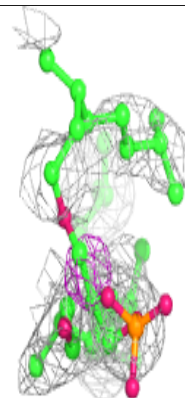
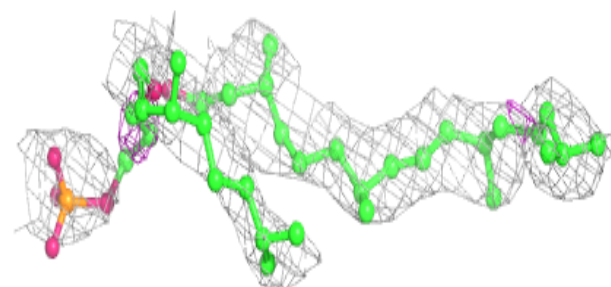
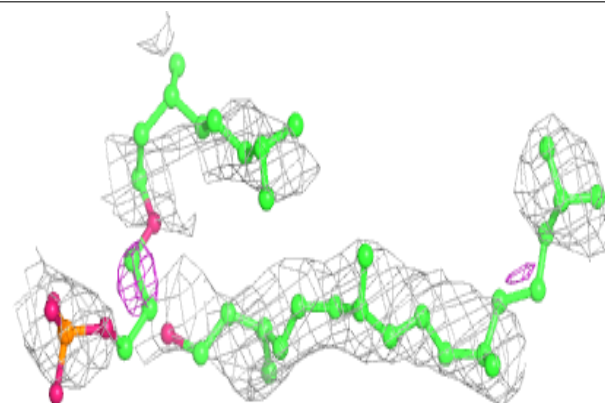


**Electron density around L3P A 300:**

$2mF_o-DF_c$  (at 0.7 rmsd) in gray  
 $mF_o-DF_c$  (at 3 rmsd) in purple (negative)  
and green (positive)

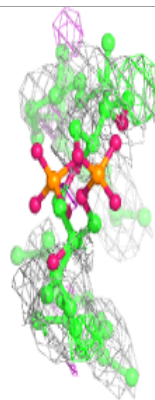
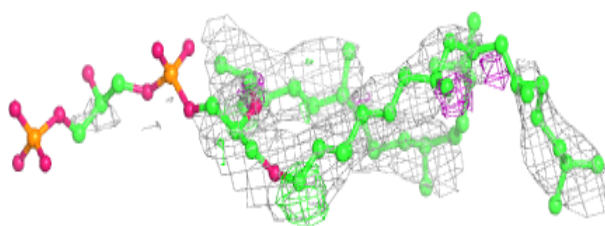
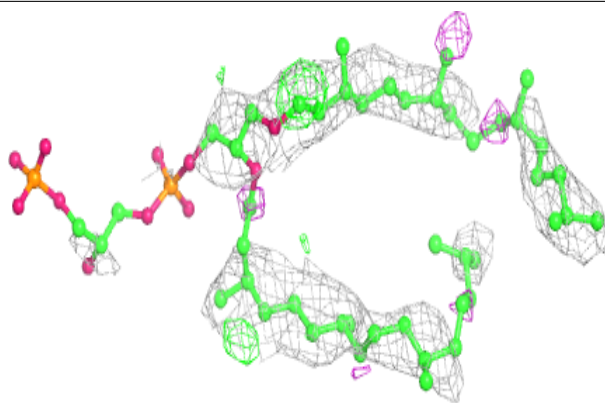
**Electron density around L3P A 280:**

$2mF_o-DF_c$  (at 0.7 rmsd) in gray  
 $mF_o-DF_c$  (at 3 rmsd) in purple (negative)  
and green (positive)

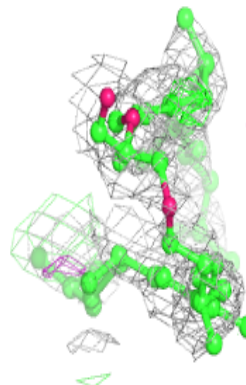
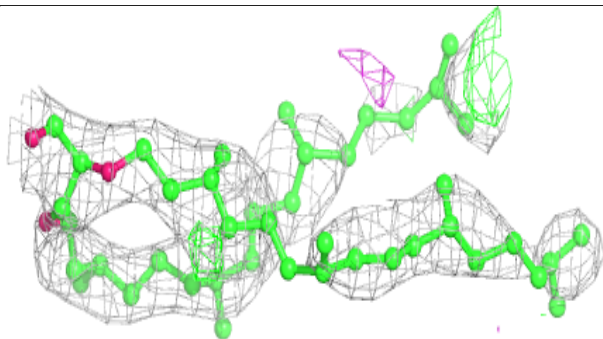
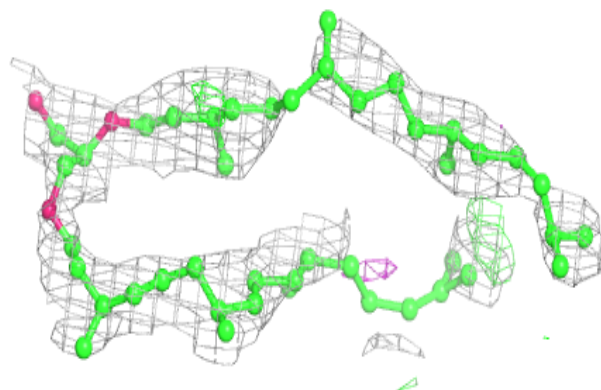


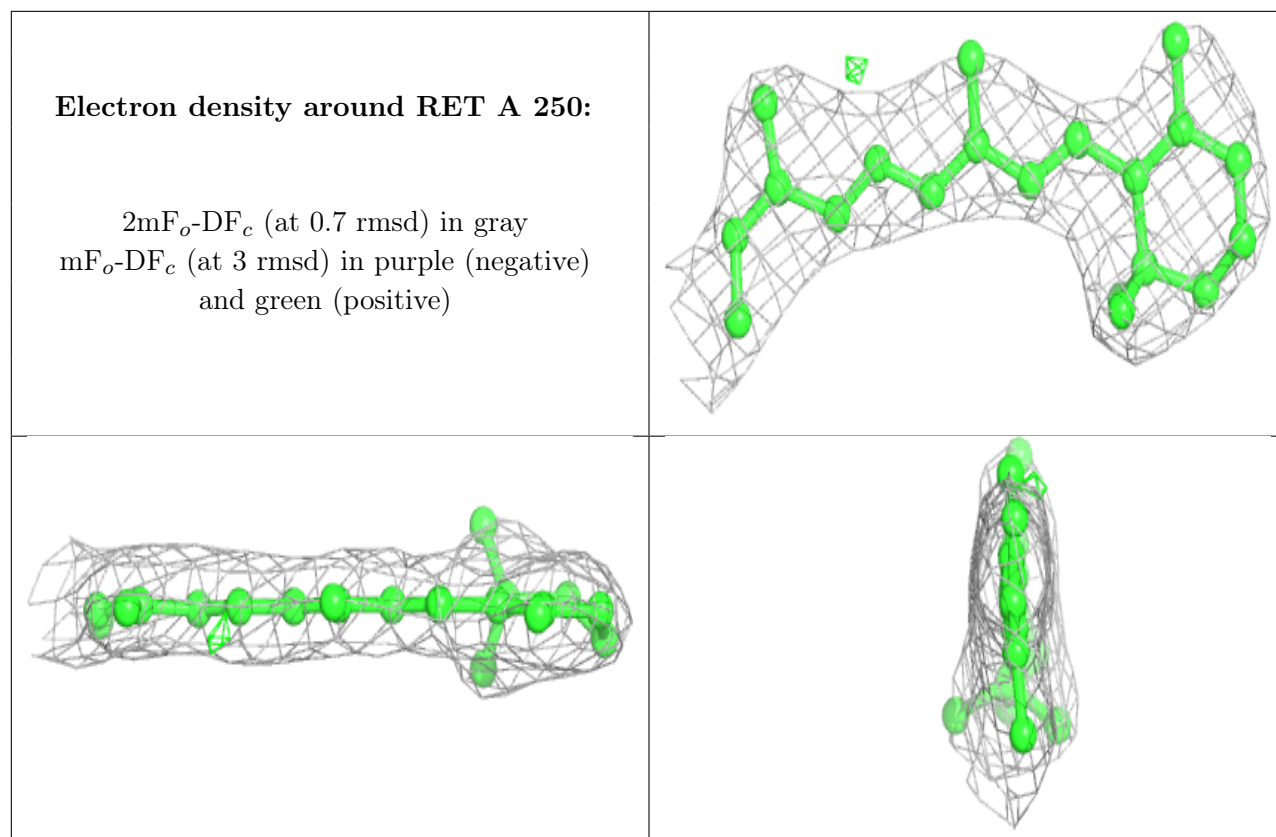
**Electron density around L3P A 260:**

$2mF_o-DF_c$  (at 0.7 rmsd) in gray  
 $mF_o-DF_c$  (at 3 rmsd) in purple (negative)  
and green (positive)

**Electron density around L2P A 270:**

$2mF_o-DF_c$  (at 0.7 rmsd) in gray  
 $mF_o-DF_c$  (at 3 rmsd) in purple (negative)  
and green (positive)





## 6.5 Other polymers [i](#)

There are no such residues in this entry.