



Full wwPDB X-ray Structure Validation Report ⓘ

Mar 8, 2018 – 07:58 pm GMT

PDB ID : 1X7D
Title : Crystal Structure Analysis of Ornithine Cyclodeaminase Complexed with NAD and ornithine to 1.6 Angstroms
Authors : Alam, S.; Goodman, J.L.; Wang, S.; Ruzicka, F.J.; Frey, P.A.; Wedekind, J.E.
Deposited on : 2004-08-13
Resolution : 1.60 Å(reported)

This is a Full wwPDB X-ray Structure Validation Report for a publicly released PDB entry.

We welcome your comments at validation@mail.wwpdb.org

A user guide is available at

<https://www.wwpdb.org/validation/2017/XrayValidationReportHelp>

with specific help available everywhere you see the ⓘ symbol.

The following versions of software and data (see [references ⓘ](#)) were used in the production of this report:

MolProbity : 4.02b-467
Mogul : 1.7.3 (157068), CSD as539be (2018)
Xtriage (Phenix) : 1.13
EDS : trunk30967
Percentile statistics : 20171227.v01 (using entries in the PDB archive December 27th 2017)
Refmac : 5.8.0158
CCP4 : 7.0 (Gargrove)
Ideal geometry (proteins) : Engh & Huber (2001)
Ideal geometry (DNA, RNA) : Parkinson et al. (1996)
Validation Pipeline (wwPDB-VP) : trunk30967

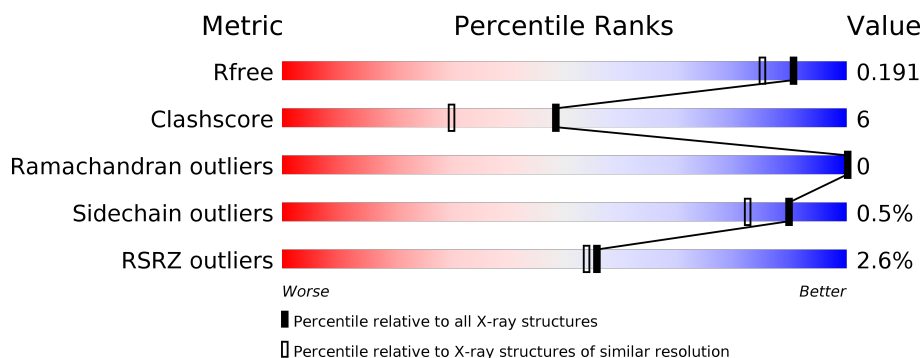
1 Overall quality at a glance

The following experimental techniques were used to determine the structure:

X-RAY DIFFRACTION

The reported resolution of this entry is 1.60 Å.

Percentile scores (ranging between 0-100) for global validation metrics of the entry are shown in the following graphic. The table shows the number of entries on which the scores are based.



Metric	Whole archive (#Entries)	Similar resolution (#Entries, resolution range(Å))
R_{free}	111664	2957 (1.60-1.60)
Clashscore	122126	3202 (1.60-1.60)
Ramachandran outliers	120053	3117 (1.60-1.60)
Sidechain outliers	120020	3116 (1.60-1.60)
RSRZ outliers	108989	2883 (1.60-1.60)

The table below summarises the geometric issues observed across the polymeric chains and their fit to the electron density. The red, orange, yellow and green segments on the lower bar indicate the fraction of residues that contain outliers for ≥ 3 , 2, 1 and 0 types of geometric quality criteria. A grey segment represents the fraction of residues that are not modelled. The numeric value for each fraction is indicated below the corresponding segment, with a dot representing fractions $\leq 5\%$. The upper red bar (where present) indicates the fraction of residues that have poor fit to the electron density. The numeric value is given above the bar.

Mol	Chain	Length	Quality of chain
1	A	350	<div> <div>3%</div> <div> <div></div> <div>87%</div> <div>10%</div> <div></div> </div> </div>
1	B	350	<div> <div>2%</div> <div> <div></div> <div>83%</div> <div>13%</div> <div></div> </div> </div>

2 Entry composition

There are 7 unique types of molecules in this entry. The entry contains 6249 atoms, of which 0 are hydrogens and 0 are deuteriums.

In the tables below, the ZeroOcc column contains the number of atoms modelled with zero occupancy, the AltConf column contains the number of residues with at least one atom in alternate conformation and the Trace column contains the number of residues modelled with at most 2 atoms.

- Molecule 1 is a protein called ornithine cyclodeaminase.

Mol	Chain	Residues	Atoms						ZeroOcc	AltConf	Trace
1	A	340	Total	C	N	O	S	Se	0	0	0
			2620	1659	454	498	1	8			
1	B	339	Total	C	N	O	S	Se	0	0	0
			2615	1656	453	497	1	8			

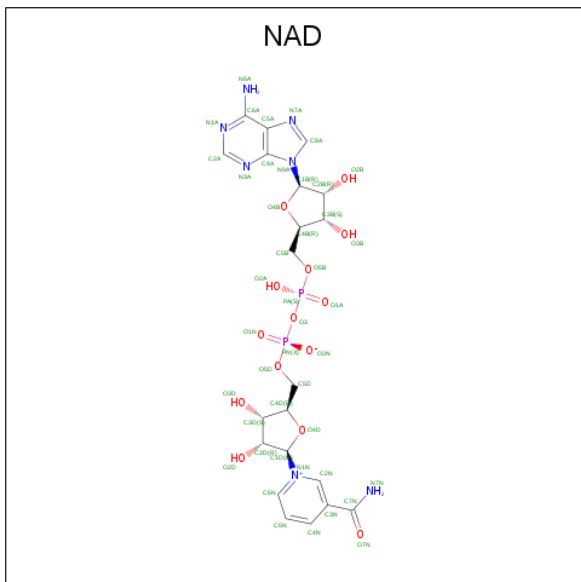
There are 16 discrepancies between the modelled and reference sequences:

Chain	Residue	Modelled	Actual	Comment	Reference
A	10	MSE	MET	MODIFIED RESIDUE	UNP Q88H32
A	58	MSE	MET	MODIFIED RESIDUE	UNP Q88H32
A	86	MSE	MET	MODIFIED RESIDUE	UNP Q88H32
A	119	MSE	MET	MODIFIED RESIDUE	UNP Q88H32
A	132	MSE	MET	MODIFIED RESIDUE	UNP Q88H32
A	215	MSE	MET	MODIFIED RESIDUE	UNP Q88H32
A	220	MSE	MET	MODIFIED RESIDUE	UNP Q88H32
A	316	MSE	MET	MODIFIED RESIDUE	UNP Q88H32
B	10	MSE	MET	MODIFIED RESIDUE	UNP Q88H32
B	58	MSE	MET	MODIFIED RESIDUE	UNP Q88H32
B	86	MSE	MET	MODIFIED RESIDUE	UNP Q88H32
B	119	MSE	MET	MODIFIED RESIDUE	UNP Q88H32
B	132	MSE	MET	MODIFIED RESIDUE	UNP Q88H32
B	215	MSE	MET	MODIFIED RESIDUE	UNP Q88H32
B	220	MSE	MET	MODIFIED RESIDUE	UNP Q88H32
B	316	MSE	MET	MODIFIED RESIDUE	UNP Q88H32

- Molecule 2 is SODIUM ION (three-letter code: NA) (formula: Na).

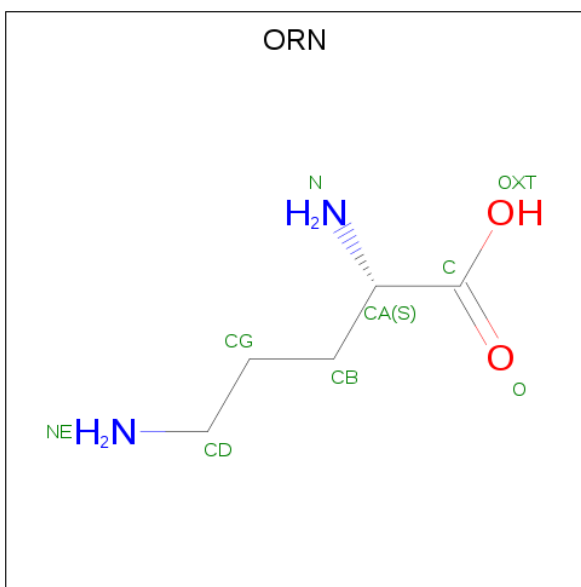
Mol	Chain	Residues	Atoms		ZeroOcc	AltConf
2	B	1	Total	Na	0	0
			1	1		
2	A	1	Total	Na	0	0
			1	1		

- Molecule 3 is NICOTINAMIDE-ADENINE-DINUCLEOTIDE (three-letter code: NAD) (formula: $\text{C}_{21}\text{H}_{27}\text{N}_7\text{O}_{14}\text{P}_2$).



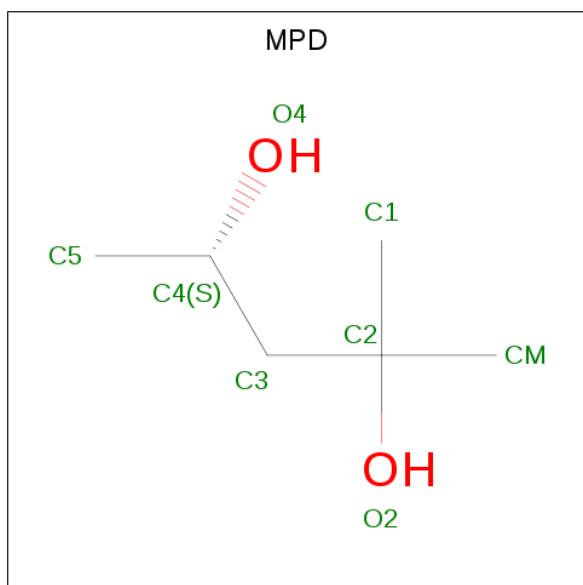
Mol	Chain	Residues	Atoms					ZeroOcc	AltConf
3	A	1	Total 44	C 21	N 7	O 14	P 2	0	0
3	B	1	Total 44	C 21	N 7	O 14	P 2	0	0

- Molecule 4 is L-ornithine (three-letter code: ORN) (formula: $\text{C}_5\text{H}_{12}\text{N}_2\text{O}_2$).



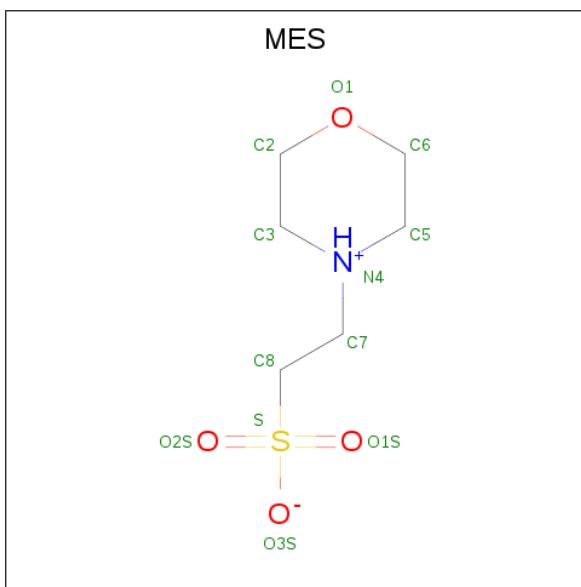
Mol	Chain	Residues	Atoms				ZeroOcc	AltConf
4	A	1	Total	C	N	O	0	1
			18	10	4	4		
4	A	1	Total	C	N	O	0	1
			18	10	4	4		

- Molecule 5 is (4S)-2-METHYL-2,4-PENTANEDIOL (three-letter code: MPD) (formula: $C_6H_{14}O_2$).



Mol	Chain	Residues	Atoms			ZeroOcc	AltConf
5	A	1	Total	C	O	0	0
			8	6	2		
5	A	1	Total	C	O	0	0
			8	6	2		
5	A	1	Total	C	O	0	0
			8	6	2		
5	A	1	Total	C	O	0	0
			8	6	2		
5	B	1	Total	C	O	0	0
			8	6	2		
5	B	1	Total	C	O	0	0
			8	6	2		

- Molecule 6 is 2-(N-MORPHOLINO)-ETHANESULFONIC ACID (three-letter code: MES) (formula: $C_6H_{13}NO_4S$).



Mol	Chain	Residues	Atoms					ZeroOcc	AltConf
6	B	1	Total	C	N	O	S	0	0
			12	6	1	4	1		

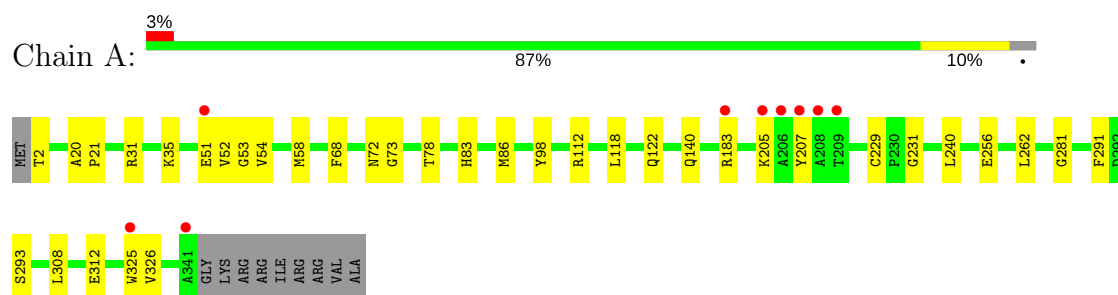
- Molecule 7 is water.

Mol	Chain	Residues	Atoms		ZeroOcc	AltConf
7	A	443	Total	O	0	0
			443	443		
7	B	385	Total	O	0	0
			385	385		

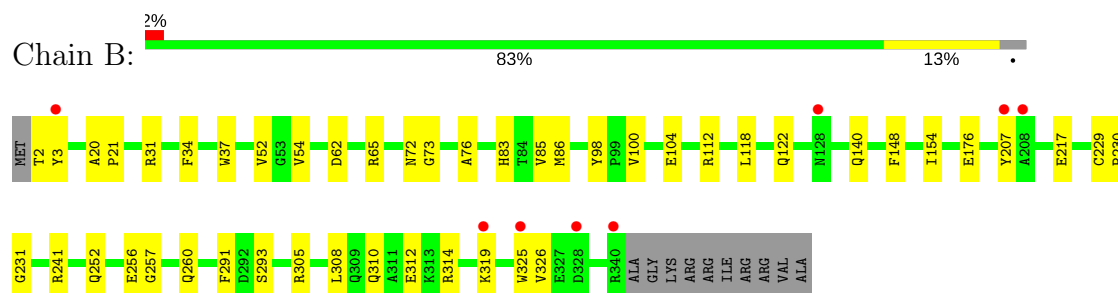
3 Residue-property plots [i](#)

These plots are drawn for all protein, RNA and DNA chains in the entry. The first graphic for a chain summarises the proportions of the various outlier classes displayed in the second graphic. The second graphic shows the sequence view annotated by issues in geometry and electron density. Residues are color-coded according to the number of geometric quality criteria for which they contain at least one outlier: green = 0, yellow = 1, orange = 2 and red = 3 or more. A red dot above a residue indicates a poor fit to the electron density ($RSRZ > 2$). Stretches of 2 or more consecutive residues without any outlier are shown as a green connector. Residues present in the sample, but not in the model, are shown in grey.

- Molecule 1: ornithine cyclodeaminase



- Molecule 1: ornithine cyclodeaminase



4 Data and refinement statistics

Property	Value	Source
Space group	P 21 21 21	Depositor
Cell constants a, b, c, α , β , γ	69.88Å 78.62Å 119.94Å 90.00° 90.00° 90.00°	Depositor
Resolution (Å)	24.95 – 1.60 24.95 – 1.60	Depositor EDS
% Data completeness (in resolution range)	98.6 (24.95-1.60) 98.8 (24.95-1.60)	Depositor EDS
R_{merge}	(Not available)	Depositor
R_{sym}	0.05	Depositor
$\langle I/\sigma(I) \rangle$ ¹	2.97 (at 1.60Å)	Xtriage
Refinement program	CNS 1.1	Depositor
R, R_{free}	0.170 , 0.190 0.170 , 0.191	Depositor DCC
R_{free} test set	4400 reflections (5.08%)	wwPDB-VP
Wilson B-factor (Å ²)	13.2	Xtriage
Anisotropy	0.131	Xtriage
Bulk solvent k_{sol} (e/Å ³), B_{sol} (Å ²)	0.34 , 52.7	EDS
L-test for twinning ²	$\langle L \rangle = 0.49$, $\langle L^2 \rangle = 0.32$	Xtriage
Estimated twinning fraction	No twinning to report.	Xtriage
F_o, F_c correlation	0.96	EDS
Total number of atoms	6249	wwPDB-VP
Average B, all atoms (Å ²)	16.0	wwPDB-VP

Xtriage's analysis on translational NCS is as follows: *The largest off-origin peak in the Patterson function is 4.44% of the height of the origin peak. No significant pseudotranslation is detected.*

¹Intensities estimated from amplitudes.

²Theoretical values of $\langle |L| \rangle$, $\langle L^2 \rangle$ for acentric reflections are 0.5, 0.333 respectively for untwinned datasets, and 0.375, 0.2 for perfectly twinned datasets.

5 Model quality [i](#)

5.1 Standard geometry [i](#)

Bond lengths and bond angles in the following residue types are not validated in this section: ORN, NA, MPD, MES, NAD

The Z score for a bond length (or angle) is the number of standard deviations the observed value is removed from the expected value. A bond length (or angle) with $|Z| > 5$ is considered an outlier worth inspection. RMSZ is the root-mean-square of all Z scores of the bond lengths (or angles).

Mol	Chain	Bond lengths		Bond angles	
		RMSZ	$\# Z > 5$	RMSZ	$\# Z > 5$
1	A	0.29	0/2664	0.63	1/3609 (0.0%)
1	B	0.29	0/2659	0.62	0/3602
All	All	0.29	0/5323	0.63	1/7211 (0.0%)

There are no bond length outliers.

All (1) bond angle outliers are listed below:

Mol	Chain	Res	Type	Atoms	Z	Observed(°)	Ideal(°)
1	A	281	GLY	N-CA-C	-5.04	100.49	113.10

There are no chirality outliers.

There are no planarity outliers.

5.2 Too-close contacts [i](#)

In the following table, the Non-H and H(model) columns list the number of non-hydrogen atoms and hydrogen atoms in the chain respectively. The H(added) column lists the number of hydrogen atoms added and optimized by MolProbity. The Clashes column lists the number of clashes within the asymmetric unit, whereas Symm-Clashes lists symmetry related clashes.

Mol	Chain	Non-H	H(model)	H(added)	Clashes	Symm-Clashes
1	A	2620	0	2608	31	0
1	B	2615	0	2603	39	0
2	A	1	0	0	0	0
2	B	1	0	0	0	0
3	A	44	0	26	1	0
3	B	44	0	26	1	0
4	A	36	0	44	12	0
5	A	32	0	56	0	0

Continued on next page...

Continued from previous page...

Mol	Chain	Non-H	H(model)	H(added)	Clashes	Symm-Clashes
5	B	16	0	28	1	0
6	B	12	0	13	2	0
7	A	443	0	0	7	0
7	B	385	0	0	7	0
All	All	6249	0	5404	70	0

The all-atom clashscore is defined as the number of clashes found per 1000 atoms (including hydrogen atoms). The all-atom clashscore for this structure is 6.

All (70) close contacts within the same asymmetric unit are listed below, sorted by their clash magnitude.

Atom-1	Atom-2	Interatomic distance (Å)	Clash overlap (Å)
1:A:52:VAL:HG22	7:A:1754:HOH:O	1.83	0.78
1:A:53:GLY:HA2	1:A:205:LYS:HE3	1.64	0.78
1:A:51:GLU:HG2	1:A:52:VAL:HG13	1.67	0.76
1:B:20:ALA:HB3	1:B:21:PRO:HD3	1.69	0.74
4:A:1102[B]:ORN:NE	1:B:73:GLY:HA3	2.03	0.73
1:A:183:ARG:HD2	7:A:1825:HOH:O	1.91	0.70
1:B:310:GLN:NE2	1:B:314:ARG:HH12	1.90	0.69
4:A:1102[A]:ORN:HE2	1:B:85:VAL:HG22	1.58	0.69
1:A:73:GLY:HA3	4:A:1101[A]:ORN:NE	2.06	0.68
1:A:308:LEU:O	1:A:312:GLU:HG3	1.93	0.68
1:B:2:THR:N	1:B:98:TYR:HH	1.93	0.67
1:B:3:TYR:CE1	1:B:319:LYS:HG3	2.30	0.67
1:B:308:LEU:O	1:B:312:GLU:HG3	1.98	0.63
1:A:54:VAL:CG1	4:A:1101[A]:ORN:HE2	2.12	0.62
1:A:20:ALA:HB3	1:A:21:PRO:HD3	1.82	0.62
1:A:31:ARG:HD2	7:A:1900:HOH:O	1.99	0.62
1:A:2:THR:N	1:A:98:TYR:HH	1.99	0.60
1:B:72:ASN:ND2	1:B:86:MSE:HB2	2.16	0.60
1:A:73:GLY:HA3	4:A:1101[B]:ORN:HE1	1.67	0.60
4:A:1102[B]:ORN:HE2	1:B:54:VAL:CG1	2.16	0.58
1:B:72:ASN:HD21	1:B:86:MSE:HB2	1.70	0.57
1:A:325:TRP:CE3	1:A:326:VAL:HG22	2.40	0.56
1:A:73:GLY:HA3	4:A:1101[B]:ORN:NE	2.21	0.55
1:B:100:VAL:HG21	5:B:1406:MPD:HM3	1.88	0.55
1:A:53:GLY:CA	1:A:205:LYS:HE3	2.35	0.55
1:B:229:CYS:HA	1:B:256:GLU:HB3	1.88	0.55
1:B:217:GLU:HA	7:B:3440:HOH:O	2.09	0.52
1:B:207:TYR:CZ	1:B:231:GLY:HA2	2.45	0.51
1:B:229:CYS:HB2	1:B:230:PRO:HD2	1.92	0.51

Continued on next page...

Continued from previous page...

Atom-1	Atom-2	Interatomic distance (Å)	Clash overlap (Å)
1:B:176:GLU:OE2	6:B:3158:MES:H32	2.11	0.51
1:B:241:ARG:HD2	7:B:3529:HOH:O	2.10	0.50
1:A:229:CYS:HA	1:A:256:GLU:HB3	1.93	0.50
1:A:73:GLY:HA3	4:A:1101[A]:ORN:HE1	1.74	0.50
1:A:83:HIS:HD2	7:B:3234:HOH:O	1.95	0.50
4:A:1102[A]:ORN:HE1	1:B:73:GLY:HA3	1.77	0.49
4:A:1102[A]:ORN:NE	1:B:85:VAL:HG22	2.26	0.49
1:B:118:LEU:O	1:B:122:GLN:HG3	2.13	0.48
1:B:65:ARG:HD2	1:B:305:ARG:HD3	1.95	0.48
1:B:325:TRP:CG	1:B:326:VAL:N	2.79	0.47
1:A:207:TYR:CZ	1:A:231:GLY:HA2	2.50	0.47
1:B:148:PHE:HB3	1:B:154:ILE:HG13	1.97	0.47
1:B:252:GLN:HG2	1:B:256:GLU:OE1	2.15	0.47
1:B:310:GLN:HE21	1:B:314:ARG:HH12	1.62	0.46
1:B:34:PHE:O	1:B:37:TRP:HB2	2.15	0.46
7:A:1583:HOH:O	1:B:83:HIS:HD2	1.98	0.46
1:A:78:THR:HG23	7:A:1760:HOH:O	2.16	0.45
1:B:140:GLN:HG2	3:B:1301:NAD:PN	2.56	0.45
1:B:176:GLU:OE2	6:B:3158:MES:H72	2.16	0.45
1:B:52:VAL:HG22	7:B:3310:HOH:O	2.17	0.45
1:A:54:VAL:HG13	4:A:1101[A]:ORN:HE2	1.81	0.45
1:A:73:GLY:CA	4:A:1101[B]:ORN:NE	2.79	0.45
1:B:257:GLY:O	1:B:260:GLN:HG2	2.17	0.45
1:B:65:ARG:NE	1:B:305:ARG:HH11	2.15	0.44
1:A:51:GLU:HG3	7:A:1932:HOH:O	2.17	0.44
1:A:72:ASN:OD1	1:A:86:MSE:HB2	2.17	0.44
1:B:31:ARG:NH2	1:B:122:GLN:OE1	2.52	0.43
1:B:217:GLU:CA	7:B:3440:HOH:O	2.66	0.43
1:B:310:GLN:HE21	1:B:314:ARG:NH1	2.17	0.43
1:B:76:ALA:HB3	7:B:3368:HOH:O	2.18	0.43
1:B:291:PHE:CE2	1:B:293:SER:HB2	2.54	0.43
1:B:62:ASP:HB2	7:B:3511:HOH:O	2.18	0.42
1:A:240:LEU:CB	1:A:262:LEU:HD11	2.49	0.42
1:A:118:LEU:O	1:A:122:GLN:HG3	2.19	0.41
1:A:31:ARG:HD3	7:A:1847:HOH:O	2.20	0.41
1:A:140:GLN:HG2	3:A:1302:NAD:PN	2.60	0.41
1:B:310:GLN:NE2	1:B:314:ARG:NH1	2.66	0.41
1:A:31:ARG:O	1:A:35:LYS:HG3	2.21	0.41
1:A:291:PHE:CE2	1:A:293:SER:HB2	2.56	0.40
1:A:58:MSE:O	1:A:68:PHE:HA	2.21	0.40
1:A:240:LEU:HB2	1:A:262:LEU:HD11	2.03	0.40

There are no symmetry-related clashes.

5.3 Torsion angles [i](#)

5.3.1 Protein backbone [i](#)

In the following table, the Percentiles column shows the percent Ramachandran outliers of the chain as a percentile score with respect to all X-ray entries followed by that with respect to entries of similar resolution.

The Analysed column shows the number of residues for which the backbone conformation was analysed, and the total number of residues.

Mol	Chain	Analysed	Favoured	Allowed	Outliers	Percentiles	
1	A	338/350 (97%)	326 (96%)	12 (4%)	0	100	100
1	B	337/350 (96%)	323 (96%)	14 (4%)	0	100	100
All	All	675/700 (96%)	649 (96%)	26 (4%)	0	100	100

There are no Ramachandran outliers to report.

5.3.2 Protein sidechains [i](#)

In the following table, the Percentiles column shows the percent sidechain outliers of the chain as a percentile score with respect to all X-ray entries followed by that with respect to entries of similar resolution.

The Analysed column shows the number of residues for which the sidechain conformation was analysed, and the total number of residues.

Mol	Chain	Analysed	Rotameric	Outliers	Percentiles	
1	A	275/275 (100%)	274 (100%)	1 (0%)	92	86
1	B	275/275 (100%)	273 (99%)	2 (1%)	85	75
All	All	550/550 (100%)	547 (100%)	3 (0%)	90	82

All (3) residues with a non-rotameric sidechain are listed below:

Mol	Chain	Res	Type
1	A	112	ARG
1	B	104	GLU
1	B	112	ARG

Some sidechains can be flipped to improve hydrogen bonding and reduce clashes. All (10) such

sidechains are listed below:

Mol	Chain	Res	Type
1	A	83	HIS
1	A	144	GLN
1	A	223	ASN
1	B	72	ASN
1	B	83	HIS
1	B	137	ASN
1	B	144	GLN
1	B	223	ASN
1	B	309	GLN
1	B	310	GLN

5.3.3 RNA [i](#)

There are no RNA molecules in this entry.

5.4 Non-standard residues in protein, DNA, RNA chains [i](#)

There are no non-standard protein/DNA/RNA residues in this entry.

5.5 Carbohydrates [i](#)

There are no carbohydrates in this entry.

5.6 Ligand geometry [i](#)

Of 15 ligands modelled in this entry, 2 are monoatomic - leaving 13 for Mogul analysis.

In the following table, the Counts columns list the number of bonds (or angles) for which Mogul statistics could be retrieved, the number of bonds (or angles) that are observed in the model and the number of bonds (or angles) that are defined in the Chemical Component Dictionary. The Link column lists molecule types, if any, to which the group is linked. The Z score for a bond length (or angle) is the number of standard deviations the observed value is removed from the expected value. A bond length (or angle) with $|Z| > 2$ is considered an outlier worth inspection. RMSZ is the root-mean-square of all Z scores of the bond lengths (or angles).

Mol	Type	Chain	Res	Link	Bond lengths			Bond angles		
					Counts	RMSZ	$\# Z > 2$	Counts	RMSZ	$\# Z > 2$
4	ORN	A	1101[A]	-	3,8,8	0.22	0	2,9,9	0.75	0
4	ORN	A	1101[B]	-	3,8,8	0.32	0	2,9,9	0.82	0
4	ORN	A	1102[A]	-	3,8,8	0.28	0	2,9,9	0.76	0

Mol	Type	Chain	Res	Link	Bond lengths			Bond angles		
					Counts	RMSZ	# Z > 2	Counts	RMSZ	# Z > 2
4	ORN	A	1102[B]	-	3,8,8	0.25	0	2,9,9	0.79	0
3	NAD	A	1302	-	40,48,48	2.34	10 (25%)	44,73,73	2.31	7 (15%)
5	MPD	A	1401	-	7,7,7	0.75	0	9,10,10	0.86	0
5	MPD	A	1402	-	7,7,7	0.80	0	9,10,10	0.81	0
5	MPD	A	1403	-	7,7,7	1.01	0	9,10,10	0.71	0
5	MPD	A	1404	-	7,7,7	0.69	0	9,10,10	0.69	0
3	NAD	B	1301	-	40,48,48	2.33	10 (25%)	44,73,73	2.36	7 (15%)
5	MPD	B	1405	-	7,7,7	0.70	0	9,10,10	0.70	0
5	MPD	B	1406	-	7,7,7	0.71	0	9,10,10	0.74	0
6	MES	B	3158	-	12,12,12	2.65	6 (50%)	14,16,16	4.15	7 (50%)

In the following table, the Chirals column lists the number of chiral outliers, the number of chiral centers analysed, the number of these observed in the model and the number defined in the Chemical Component Dictionary. Similar counts are reported in the Torsion and Rings columns. '-' means no outliers of that kind were identified.

Mol	Type	Chain	Res	Link	Chirals	Torsions	Rings
4	ORN	A	1101[A]	-	-	0/4/8/8	0/0/0/0
4	ORN	A	1101[B]	-	-	0/4/8/8	0/0/0/0
4	ORN	A	1102[A]	-	-	0/4/8/8	0/0/0/0
4	ORN	A	1102[B]	-	-	0/4/8/8	0/0/0/0
3	NAD	A	1302	-	-	0/22/62/62	0/5/5/5
5	MPD	A	1401	-	-	0/5/5/5	0/0/0/0
5	MPD	A	1402	-	-	0/5/5/5	0/0/0/0
5	MPD	A	1403	-	-	0/5/5/5	0/0/0/0
5	MPD	A	1404	-	-	0/5/5/5	0/0/0/0
3	NAD	B	1301	-	-	0/22/62/62	0/5/5/5
5	MPD	B	1405	-	-	0/5/5/5	0/0/0/0
5	MPD	B	1406	-	-	0/5/5/5	0/0/0/0
6	MES	B	3158	-	-	0/6/14/14	0/1/1/1

All (26) bond length outliers are listed below:

Mol	Chain	Res	Type	Atoms	Z	Observed(Å)	Ideal(Å)
6	B	3158	MES	O3S-S	-2.91	1.37	1.47
3	A	1302	NAD	C2N-C3N	-2.85	1.34	1.39
3	B	1301	NAD	C2N-C3N	-2.69	1.34	1.39
3	A	1302	NAD	C3B-C4B	2.07	1.58	1.53
3	B	1301	NAD	C3B-C4B	2.11	1.58	1.53
3	B	1301	NAD	C8A-N9A	2.23	1.39	1.36
3	A	1302	NAD	O4D-C4D	2.30	1.50	1.45
3	B	1301	NAD	O4D-C4D	2.34	1.50	1.45

Continued on next page...

Continued from previous page...

Mol	Chain	Res	Type	Atoms	Z	Observed(Å)	Ideal(Å)
6	B	3158	MES	C5-N4	2.47	1.53	1.46
3	A	1302	NAD	C8A-N9A	2.49	1.39	1.36
3	B	1301	NAD	O4D-C1D	2.61	1.44	1.41
3	A	1302	NAD	O4D-C1D	2.85	1.45	1.41
6	B	3158	MES	C3-N4	3.07	1.55	1.46
6	B	3158	MES	C7-N4	3.38	1.55	1.47
3	B	1301	NAD	C4A-N3A	3.46	1.40	1.35
3	A	1302	NAD	C4A-N3A	3.52	1.40	1.35
6	B	3158	MES	O2S-S	4.30	1.57	1.45
3	A	1302	NAD	C6N-N1N	4.41	1.46	1.35
3	B	1301	NAD	C6N-N1N	4.49	1.47	1.35
6	B	3158	MES	C8-S	4.68	1.84	1.77
3	A	1302	NAD	C2A-N3A	5.20	1.40	1.32
3	B	1301	NAD	C2A-N3A	5.34	1.40	1.32
3	A	1302	NAD	C5N-C4N	6.22	1.51	1.38
3	B	1301	NAD	C5N-C4N	6.35	1.51	1.38
3	B	1301	NAD	C4N-C3N	7.83	1.52	1.39
3	A	1302	NAD	C4N-C3N	7.90	1.53	1.39

All (21) bond angle outliers are listed below:

Mol	Chain	Res	Type	Atoms	Z	Observed(°)	Ideal(°)
3	B	1301	NAD	C5N-C4N-C3N	-10.20	108.37	120.35
3	A	1302	NAD	C5N-C4N-C3N	-9.98	108.64	120.35
6	B	3158	MES	O1S-S-C8	-8.48	96.70	106.92
3	B	1301	NAD	N3A-C2A-N1A	-8.26	121.79	128.86
3	A	1302	NAD	N3A-C2A-N1A	-7.97	122.04	128.86
6	B	3158	MES	O3S-S-C8	-6.47	95.31	105.77
6	B	3158	MES	O2S-S-C8	-4.92	100.99	106.92
6	B	3158	MES	C2-C3-N4	-3.05	105.90	110.11
3	A	1302	NAD	C4B-O4B-C1B	-2.81	106.90	109.83
3	B	1301	NAD	C6N-C5N-C4N	-2.76	115.31	119.43
3	A	1302	NAD	C6N-C5N-C4N	-2.58	115.58	119.43
3	B	1301	NAD	C4B-O4B-C1B	-2.40	107.32	109.83
6	B	3158	MES	O3S-S-O2S	-2.29	105.68	111.27
3	B	1301	NAD	N6A-C6A-N1A	2.04	122.79	118.57
3	A	1302	NAD	N6A-C6A-N1A	2.06	122.85	118.57
3	A	1302	NAD	C3N-C2N-N1N	2.30	122.72	120.41
3	B	1301	NAD	C3N-C2N-N1N	2.32	122.74	120.41
6	B	3158	MES	C6-C5-N4	3.30	114.66	110.11
3	A	1302	NAD	C2A-N1A-C6A	4.09	125.69	118.75
3	B	1301	NAD	C2A-N1A-C6A	4.16	125.81	118.75

Continued on next page...

Continued from previous page...

Mol	Chain	Res	Type	Atoms	Z	Observed(°)	Ideal(°)
6	B	3158	MES	O3S-S-O1S	8.31	131.57	111.27

There are no chirality outliers.

There are no torsion outliers.

There are no ring outliers.

8 monomers are involved in 17 short contacts:

Mol	Chain	Res	Type	Clashes	Symm-Clashes
4	A	1101[A]	ORN	4	0
4	A	1101[B]	ORN	3	0
4	A	1102[A]	ORN	3	0
4	A	1102[B]	ORN	2	0
3	A	1302	NAD	1	0
3	B	1301	NAD	1	0
5	B	1406	MPD	1	0
6	B	3158	MES	2	0

5.7 Other polymers [i](#)

There are no such residues in this entry.

5.8 Polymer linkage issues [i](#)

There are no chain breaks in this entry.

6 Fit of model and data [i](#)

6.1 Protein, DNA and RNA chains [i](#)

In the following table, the column labelled ‘#RSRZ > 2’ contains the number (and percentage) of RSRZ outliers, followed by percent RSRZ outliers for the chain as percentile scores relative to all X-ray entries and entries of similar resolution. The OWAB column contains the minimum, median, 95th percentile and maximum values of the occupancy-weighted average B-factor per residue. The column labelled ‘Q < 0.9’ lists the number of (and percentage) of residues with an average occupancy less than 0.9.

Mol	Chain	Analysed	<RSRZ>	#RSRZ>2	OWAB(Å ²)	Q<0.9
1	A	332/350 (94%)	-0.13	9 (2%) 54 53	7, 12, 23, 38	0
1	B	331/350 (94%)	-0.06	8 (2%) 59 57	6, 13, 23, 33	0
All	All	663/700 (94%)	-0.09	17 (2%) 56 54	6, 12, 23, 38	0

All (17) RSRZ outliers are listed below:

Mol	Chain	Res	Type	RSRZ
1	A	51	GLU	4.9
1	A	207	TYR	4.4
1	A	341	ALA	4.0
1	B	207	TYR	3.0
1	A	208	ALA	2.9
1	A	325	TRP	2.8
1	B	208	ALA	2.8
1	B	328	ASP	2.5
1	A	205	LYS	2.5
1	B	3	TYR	2.4
1	B	319	LYS	2.4
1	B	128	ASN	2.3
1	B	325	TRP	2.3
1	A	209	THR	2.2
1	A	206	ALA	2.2
1	B	340	ARG	2.2
1	A	183	ARG	2.1

6.2 Non-standard residues in protein, DNA, RNA chains [i](#)

There are no non-standard protein/DNA/RNA residues in this entry.

6.3 Carbohydrates [i](#)

There are no carbohydrates in this entry.

6.4 Ligands [i](#)

In the following table, the Atoms column lists the number of modelled atoms in the group and the number defined in the chemical component dictionary. The B-factors column lists the minimum, median, 95th percentile and maximum values of B factors of atoms in the group. The column labelled 'Q< 0.9' lists the number of atoms with occupancy less than 0.9.

Mol	Type	Chain	Res	Atoms	RSCC	RSR	B-factors(\AA^2)	Q<0.9
5	MPD	A	1403	8/8	0.51	0.38	51,51,52,52	0
6	MES	B	3158	12/12	0.60	0.29	36,39,49,49	0
5	MPD	A	1404	8/8	0.65	0.18	27,29,30,30	0
5	MPD	B	1406	8/8	0.66	0.18	41,42,43,43	0
5	MPD	B	1405	8/8	0.69	0.17	29,32,33,34	0
5	MPD	A	1401	8/8	0.69	0.17	44,45,45,46	0
5	MPD	A	1402	8/8	0.78	0.30	45,46,46,47	0
4	ORN	A	1102[A]	9/9	0.90	0.21	10,13,19,28	9
4	ORN	A	1102[B]	9/9	0.90	0.21	10,13,19,28	9
4	ORN	A	1101[B]	9/9	0.94	0.16	8,9,15,24	9
4	ORN	A	1101[A]	9/9	0.94	0.16	8,9,15,24	9
2	NA	A	1501	1/1	0.95	0.08	12,12,12,12	0
3	NAD	B	1301	44/44	0.96	0.09	7,10,14,16	0
3	NAD	A	1302	44/44	0.97	0.08	7,9,13,14	0
2	NA	B	1502	1/1	0.97	0.08	13,13,13,13	0

6.5 Other polymers [i](#)

There are no such residues in this entry.