



Full wwPDB X-ray Structure Validation Report ⓘ

Mar 14, 2018 – 02:28 pm GMT

PDB ID : 1X9T
Title : The crystal structure of human adenovirus 2 penton base in complex with an ad2 N-terminal fibre peptide
Authors : Zubieta, C.; Schoehn, G.; Chroboczek, J.; Cusack, S.
Deposited on : 2004-08-24
Resolution : 3.50 Å(reported)

This is a Full wwPDB X-ray Structure Validation Report for a publicly released PDB entry.

We welcome your comments at validation@mail.wwpdb.org

A user guide is available at

<https://www.wwpdb.org/validation/2017/XrayValidationReportHelp>

with specific help available everywhere you see the ⓘ symbol.

The following versions of software and data (see [references ⓘ](#)) were used in the production of this report:

MolProbity : 4.02b-467
Mogul : 1.7.3 (157068), CSD as539be (2018)
Xtriage (Phenix) : 1.13
EDS : trunk31020
Percentile statistics : 20171227.v01 (using entries in the PDB archive December 27th 2017)
Refmac : 5.8.0158
CCP4 : 7.0 (Gargrove)
Ideal geometry (proteins) : Engh & Huber (2001)
Ideal geometry (DNA, RNA) : Parkinson et al. (1996)
Validation Pipeline (wwPDB-VP) : trunk31020

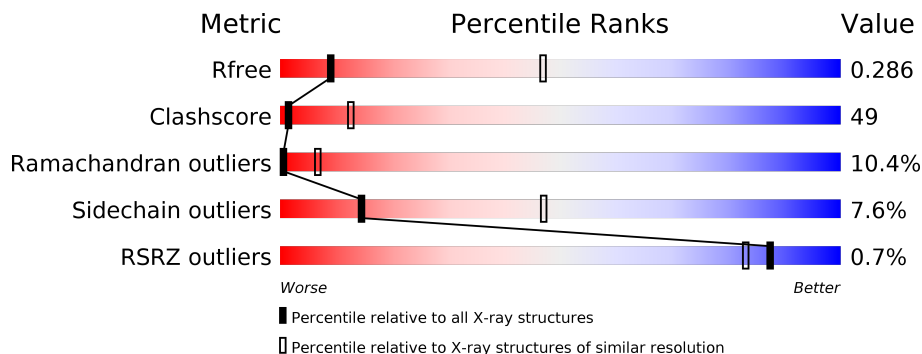
1 Overall quality at a glance

The following experimental techniques were used to determine the structure:

X-RAY DIFFRACTION

The reported resolution of this entry is 3.50 Å.

Percentile scores (ranging between 0-100) for global validation metrics of the entry are shown in the following graphic. The table shows the number of entries on which the scores are based.



Metric	Whole archive (#Entries)	Similar resolution (#Entries, resolution range(Å))
R_{free}	111664	1391 (3.60-3.40)
Clashscore	122126	1485 (3.60-3.40)
Ramachandran outliers	120053	1446 (3.60-3.40)
Sidechain outliers	120020	1447 (3.60-3.40)
RSRZ outliers	108989	1303 (3.60-3.40)

The table below summarises the geometric issues observed across the polymeric chains and their fit to the electron density. The red, orange, yellow and green segments on the lower bar indicate the fraction of residues that contain outliers for ≥ 3 , 2, 1 and 0 types of geometric quality criteria. A grey segment represents the fraction of residues that are not modelled. The numeric value for each fraction is indicated below the corresponding segment, with a dot representing fractions $\leq 5\%$. The upper red bar (where present) indicates the fraction of residues that have poor fit to the electron density. The numeric value is given above the bar.

Mol	Chain	Length	Quality of chain
1	A	523	<div> <div></div> <div>33% 40% 11% 16%</div> </div>
2	B	21	<div> <div></div> <div>10% 33% 5% 52%</div> </div>

The following table lists non-polymeric compounds, carbohydrate monomers and non-standard residues in protein, DNA, RNA chains that are outliers for geometric or electron-density-fit criteria:

Mol	Type	Chain	Res	Chirality	Geometry	Clashes	Electron density
3	C15	A	1014	-	-	-	X
3	C15	A	2000	-	-	-	X

2 Entry composition [i](#)

There are 3 unique types of molecules in this entry. The entry contains 3645 atoms, of which 0 are hydrogens and 0 are deuteriums.

In the tables below, the ZeroOcc column contains the number of atoms modelled with zero occupancy, the AltConf column contains the number of residues with at least one atom in alternate conformation and the Trace column contains the number of residues modelled with at most 2 atoms.

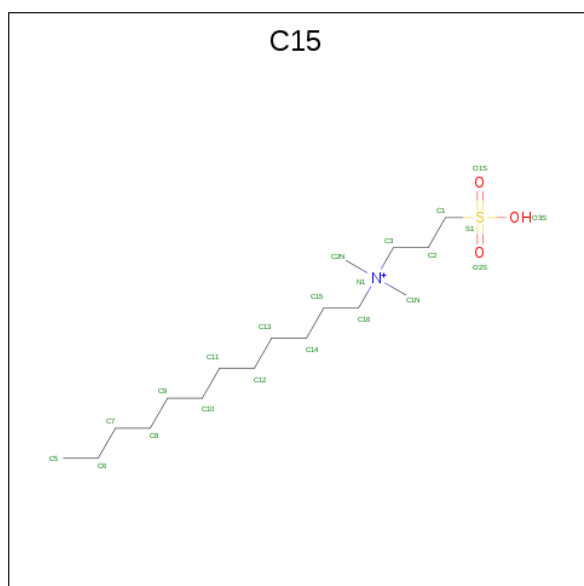
- Molecule 1 is a protein called Penton protein.

Mol	Chain	Residues	Atoms					ZeroOcc	AltConf	Trace
1	A	440	Total	C	N	O	S	0	0	0
			3519	2227	608	672	12			

- Molecule 2 is a protein called N-terminal peptide of Fiber protein.

Mol	Chain	Residues	Atoms				ZeroOcc	AltConf	Trace
2	B	10	Total	C	N	O	0	0	0
			86	58	11	17			

- Molecule 3 is N-DODECYL-N,N-DIMETHYL-3-AMMONIO-1-PROPANESULFONATE (three-letter code: C15) (formula: $C_{17}H_{38}NO_3S$).



Mol	Chain	Residues	Atoms					ZeroOcc	AltConf
3	A	1	Total	C	N	O	S	0	0
			20	15	1	3	1		
3	A	1	Total	C	N	O	S	0	0
			20	15	1	3	1		

4 Data and refinement statistics

Property	Value	Source
Space group	C 1 2 1	Depositor
Cell constants a, b, c, α , β , γ	438.37Å 299.82Å 419.58Å 90.00° 103.22° 90.00°	Depositor
Resolution (Å)	29.98 – 3.50 39.81 – 3.50	Depositor EDS
% Data completeness (in resolution range)	53.6 (29.98-3.50) 53.7 (39.81-3.50)	Depositor EDS
R_{merge}	0.19	Depositor
R_{sym}	0.19	Depositor
$\langle I/\sigma(I) \rangle$ ¹	1.36 (at 3.48Å)	Xtriage
Refinement program	CNS 1.1	Depositor
R, R_{free}	0.306 , 0.303 0.282 , 0.286	Depositor DCC
R_{free} test set	17745 reflections (5.00%)	wwPDB-VP
Wilson B-factor (Å ²)	64.5	Xtriage
Anisotropy	0.082	Xtriage
Bulk solvent k_{sol} (e/Å ³), B_{sol} (Å ²)	0.30 , 32.9	EDS
L-test for twinning ²	$\langle L \rangle = 0.45$, $\langle L^2 \rangle = 0.27$	Xtriage
Estimated twinning fraction	No twinning to report.	Xtriage
F_o, F_c correlation	0.80	EDS
Total number of atoms	3645	wwPDB-VP
Average B, all atoms (Å ²)	77.0	wwPDB-VP

Xtriage's analysis on translational NCS is as follows: *The largest off-origin peak in the Patterson function is 4.01% of the height of the origin peak. No significant pseudotranslation is detected.*

¹Intensities estimated from amplitudes.

²Theoretical values of $\langle |L| \rangle$, $\langle L^2 \rangle$ for acentric reflections are 0.5, 0.333 respectively for untwinned datasets, and 0.375, 0.2 for perfectly twinned datasets.

5 Model quality [i](#)

5.1 Standard geometry [i](#)

Bond lengths and bond angles in the following residue types are not validated in this section: C15

The Z score for a bond length (or angle) is the number of standard deviations the observed value is removed from the expected value. A bond length (or angle) with $|Z| > 5$ is considered an outlier worth inspection. RMSZ is the root-mean-square of all Z scores of the bond lengths (or angles).

Mol	Chain	Bond lengths		Bond angles	
		RMSZ	$\# Z > 5$	RMSZ	$\# Z > 5$
1	A	0.61	0/3602	0.81	1/4904 (0.0%)
2	B	0.66	0/90	0.69	0/125
All	All	0.61	0/3692	0.81	1/5029 (0.0%)

There are no bond length outliers.

All (1) bond angle outliers are listed below:

Mol	Chain	Res	Type	Atoms	Z	Observed(°)	Ideal(°)
1	A	482	TYR	N-CA-C	-7.26	91.39	111.00

There are no chirality outliers.

There are no planarity outliers.

5.2 Too-close contacts [i](#)

In the following table, the Non-H and H(model) columns list the number of non-hydrogen atoms and hydrogen atoms in the chain respectively. The H(added) column lists the number of hydrogen atoms added and optimized by MolProbity. The Clashes column lists the number of clashes within the asymmetric unit, whereas Symm-Clashes lists symmetry related clashes.

Mol	Chain	Non-H	H(model)	H(added)	Clashes	Symm-Clashes
1	A	3519	0	3452	335	0
2	B	86	0	73	16	0
3	A	40	0	64	13	0
All	All	3645	0	3589	355	0

The all-atom clashscore is defined as the number of clashes found per 1000 atoms (including hydrogen atoms). The all-atom clashscore for this structure is 49.

All (355) close contacts within the same asymmetric unit are listed below, sorted by their clash magnitude.

Atom-1	Atom-2	Interatomic distance (Å)	Clash overlap (Å)
1:A:68:ARG:NH1	1:A:562:SER:HB3	1.68	1.09
1:A:479:GLN:O	1:A:483:SER:HB2	1.59	1.03
1:A:468:LEU:HD12	1:A:469:PRO:HD2	1.41	1.01
1:A:197:ARG:HE	1:A:198:GLN:NE2	1.59	0.99
1:A:483:SER:O	1:A:487:ARG:N	1.95	0.98
1:A:479:GLN:O	1:A:483:SER:CB	2.13	0.97
1:A:68:ARG:HG2	1:A:68:ARG:HH11	1.26	0.95
1:A:197:ARG:HE	1:A:198:GLN:HE21	1.05	0.92
1:A:230:VAL:HG13	1:A:503:GLN:NE2	1.83	0.92
1:A:132:PRO:HA	1:A:175:TYR:OH	1.67	0.92
1:A:274:THR:HG22	1:A:276:ASP:H	1.37	0.89
1:A:275:TYR:CE1	1:A:404:ARG:HD3	2.09	0.88
1:A:83:ASN:HA	1:A:86:ASN:HD22	1.38	0.87
3:A:1014:C15:H7C1	3:A:2000:C15:H112	1.57	0.87
1:A:68:ARG:HH12	1:A:562:SER:HB3	1.36	0.85
1:A:475:PHE:O	1:A:513:ILE:HA	1.77	0.85
1:A:379:ILE:O	1:A:381:PRO:HD3	1.75	0.85
1:A:217:LEU:HB2	1:A:232:THR:HG21	1.57	0.84
1:A:528:THR:HG21	1:A:564:ARG:HH21	1.42	0.83
1:A:197:ARG:NE	1:A:198:GLN:HE21	1.80	0.80
1:A:444:MET:HE3	1:A:561:VAL:HG21	1.63	0.80
1:A:544:THR:CG2	1:A:548:ARG:HA	2.10	0.80
1:A:230:VAL:HG13	1:A:503:GLN:HE22	1.47	0.79
1:A:468:LEU:HD12	1:A:469:PRO:CD	2.12	0.79
1:A:68:ARG:NH1	1:A:68:ARG:HG2	1.97	0.78
1:A:403:TYR:CD1	1:A:504:ILE:HG12	2.19	0.78
1:A:104:GLY:O	1:A:107:SER:HB3	1.83	0.77
1:A:217:LEU:HB2	1:A:232:THR:CG2	2.14	0.76
1:A:145:ALA:HB3	1:A:168:PHE:HE1	1.50	0.76
1:A:135:ASN:HA	1:A:172:GLU:HG2	1.68	0.76
1:A:96:ILE:HG22	1:A:98:ASN:H	1.51	0.76
1:A:146:ARG:O	1:A:246:CYS:HB2	1.87	0.75
3:A:1014:C15:H9C1	3:A:2000:C15:H132	1.69	0.74
1:A:378:VAL:HG23	1:A:379:ILE:N	2.01	0.74
1:A:512:THR:O	1:A:513:ILE:HB	1.88	0.74
1:A:277:ASP:HB3	1:A:419:ILE:HD11	1.70	0.74
1:A:134:VAL:HG13	1:A:140:THR:O	1.87	0.74
1:A:528:THR:HG21	1:A:564:ARG:NH2	2.02	0.73
1:A:544:THR:HG22	1:A:548:ARG:HA	1.69	0.73
1:A:193:LEU:HD11	1:A:498:ARG:HH12	1.54	0.73

Continued on next page...

Continued from previous page...

Atom-1	Atom-2	Interatomic distance (Å)	Clash overlap (Å)
1:A:214:ASN:HD22	1:A:214:ASN:C	1.93	0.73
1:A:146:ARG:NH1	3:A:2000:C15:H1C2	2.04	0.73
2:B:10:THR:HG22	2:B:10:THR:O	1.89	0.73
1:A:215:PHE:O	1:A:216:ARG:HB2	1.89	0.72
1:A:275:TYR:CZ	1:A:404:ARG:HD3	2.26	0.71
1:A:154:THR:HG22	1:A:155:LYS:HG3	1.72	0.70
1:A:146:ARG:HH12	3:A:2000:C15:H1C2	1.57	0.70
1:A:424:LEU:HD23	1:A:425:LEU:N	2.06	0.69
1:A:378:VAL:O	1:A:380:LYS:N	2.25	0.69
1:A:274:THR:HG22	1:A:276:ASP:N	2.06	0.69
1:A:98:ASN:HD22	1:A:99:ASN:N	1.90	0.69
1:A:504:ILE:HG22	1:A:505:LEU:N	2.06	0.69
1:A:211:ASP:OD1	1:A:213:ARG:HG2	1.94	0.68
1:A:378:VAL:HG23	1:A:379:ILE:H	1.57	0.68
1:A:283:ILE:O	1:A:401:THR:HG23	1.93	0.68
1:A:499:PHE:HD1	1:A:505:LEU:HB3	1.59	0.68
1:A:428:PRO:O	1:A:429:ASP:HB3	1.93	0.68
1:A:217:LEU:CB	1:A:232:THR:HG21	2.25	0.67
1:A:274:THR:HG22	1:A:275:TYR:N	2.10	0.67
1:A:83:ASN:HA	1:A:86:ASN:ND2	2.09	0.67
1:A:457:ILE:HD12	1:A:458:SER:H	1.58	0.67
1:A:130:ASN:HA	1:A:519:ASN:CG	2.16	0.66
1:A:214:ASN:HD21	1:A:216:ARG:HB3	1.60	0.66
1:A:487:ARG:NH1	1:A:507:ARG:NH2	2.44	0.66
1:A:215:PHE:HB3	1:A:283:ILE:HG23	1.77	0.65
1:A:440:SER:C	1:A:442:PRO:HD3	2.17	0.65
1:A:133:ASN:HB2	1:A:175:TYR:CD2	2.32	0.65
1:A:224:GLY:O	1:A:225:LEU:HD23	1.97	0.65
1:A:440:SER:HB3	1:A:461:PRO:O	1.97	0.65
1:A:145:ALA:HB3	1:A:168:PHE:CE1	2.31	0.65
2:B:18:ASP:OD1	2:B:18:ASP:O	2.15	0.65
1:A:498:ARG:HD3	2:B:14:VAL:HG12	1.80	0.64
3:A:1014:C15:H122	3:A:2000:C15:H121	1.78	0.64
1:A:513:ILE:O	1:A:513:ILE:HG22	1.97	0.64
1:A:468:LEU:CD1	1:A:469:PRO:HD2	2.24	0.64
1:A:210:PHE:HD2	1:A:240:ILE:HG22	1.63	0.63
1:A:171:PRO:O	1:A:174:ASN:ND2	2.32	0.63
1:A:444:MET:CE	1:A:561:VAL:HG21	2.28	0.63
1:A:134:VAL:HA	1:A:140:THR:OG1	1.98	0.63
1:A:138:MET:O	1:A:139:PHE:HB2	1.99	0.63
1:A:207:GLY:O	1:A:208:VAL:HB	1.97	0.63

Continued on next page...

Continued from previous page...

Atom-1	Atom-2	Interatomic distance (Å)	Clash overlap (Å)
1:A:544:THR:HG21	1:A:548:ARG:HA	1.80	0.63
1:A:436:GLN:NE2	1:A:438:TYR:HE2	1.96	0.63
1:A:477:ASN:C	1:A:479:GLN:N	2.53	0.62
1:A:177:GLU:HG3	1:A:178:THR:N	2.15	0.61
1:A:154:THR:HG22	1:A:155:LYS:N	2.14	0.61
1:A:481:VAL:HG12	1:A:481:VAL:O	2.00	0.61
1:A:481:VAL:HA	1:A:484:GLN:HB3	1.83	0.61
1:A:385:ASP:OD1	1:A:389:ARG:HD2	2.00	0.61
1:A:477:ASN:C	1:A:479:GLN:H	2.03	0.61
1:A:292:TYR:CD1	1:A:378:VAL:HG12	2.35	0.60
1:A:430:VAL:HG21	1:A:517:SER:N	2.16	0.60
1:A:52:ARG:N	1:A:116:ARG:HH12	2.00	0.60
1:A:378:VAL:CG2	1:A:379:ILE:H	2.14	0.60
1:A:57:TYR:O	1:A:58:SER:C	2.40	0.60
1:A:210:PHE:CD2	1:A:240:ILE:HG22	2.37	0.59
1:A:378:VAL:CG2	1:A:379:ILE:N	2.65	0.59
1:A:159:VAL:HG23	1:A:159:VAL:O	2.00	0.59
1:A:278:LEU:HD22	1:A:406:TRP:HA	1.84	0.59
1:A:480:ALA:HB1	1:A:510:ALA:HB3	1.83	0.59
1:A:493:THR:HB	1:A:495:VAL:HG23	1.84	0.59
1:A:435:GLU:OE1	1:A:435:GLU:HA	2.03	0.59
1:A:237:HIS:CD2	1:A:238:PRO:O	2.56	0.59
1:A:497:ASN:O	1:A:499:PHE:N	2.34	0.59
1:A:208:VAL:HG22	1:A:242:LEU:CD2	2.33	0.59
1:A:233:ASN:OD1	1:A:509:PRO:HG3	2.02	0.59
1:A:499:PHE:N	1:A:499:PHE:CD2	2.69	0.59
1:A:211:ASP:OD1	1:A:212:THR:N	2.31	0.59
1:A:389:ARG:HH11	1:A:389:ARG:HG2	1.67	0.59
1:A:122:ASP:OD1	1:A:528:THR:HG22	2.03	0.58
1:A:173:GLY:O	1:A:175:TYR:CD1	2.55	0.58
1:A:274:THR:CG2	1:A:275:TYR:N	2.67	0.58
1:A:504:ILE:O	1:A:506:ALA:N	2.37	0.58
1:A:498:ARG:O	2:B:16:PRO:HD3	2.03	0.58
1:A:98:ASN:C	1:A:98:ASN:HD22	2.06	0.58
1:A:175:TYR:CD1	1:A:175:TYR:N	2.72	0.58
1:A:479:GLN:O	1:A:483:SER:N	2.36	0.58
2:B:15:TYR:HD2	2:B:16:PRO:N	2.02	0.58
1:A:538:VAL:HG23	1:A:538:VAL:O	2.02	0.57
1:A:273:ILE:HG23	1:A:273:ILE:O	2.02	0.57
1:A:175:TYR:H	1:A:175:TYR:HD1	1.52	0.57
1:A:498:ARG:C	1:A:499:PHE:HD2	2.08	0.57

Continued on next page...

Continued from previous page...

Atom-1	Atom-2	Interatomic distance (Å)	Clash overlap (Å)
1:A:295:SER:OG	1:A:377:PRO:HD3	2.03	0.57
1:A:411:ASN:N	1:A:411:ASN:OD1	2.36	0.57
1:A:500:PRO:HG2	1:A:501:GLU:OE2	2.04	0.57
1:A:441:LEU:N	1:A:442:PRO:HD3	2.19	0.57
1:A:258:LEU:CD1	1:A:430:VAL:HA	2.35	0.57
2:B:15:TYR:HD2	2:B:16:PRO:CD	2.18	0.56
1:A:130:ASN:HA	1:A:519:ASN:ND2	2.21	0.56
1:A:69:VAL:CG2	1:A:561:VAL:HB	2.36	0.56
1:A:498:ARG:C	1:A:499:PHE:CD2	2.78	0.56
1:A:520:VAL:HG23	1:A:521:PRO:HD2	1.87	0.56
1:A:431:THR:O	1:A:432:CYS:HB2	2.05	0.56
1:A:463:VAL:HB	1:A:529:LEU:HD13	1.87	0.56
1:A:86:ASN:HB3	1:A:90:ASN:O	2.06	0.56
1:A:243:LEU:HG	1:A:403:TYR:HE2	1.71	0.56
1:A:279:GLU:O	1:A:280:GLY:O	2.24	0.55
2:B:18:ASP:CG	2:B:18:ASP:O	2.44	0.55
1:A:446:GLN:O	1:A:448:PRO:HD3	2.07	0.55
1:A:151:ARG:HB3	1:A:201:VAL:H	1.70	0.55
1:A:132:PRO:HD2	1:A:553:TYR:CE2	2.41	0.55
1:A:88:HIS:ND1	1:A:555:TYR:O	2.38	0.55
1:A:154:THR:CG2	1:A:155:LYS:N	2.69	0.55
1:A:150:SER:HB3	1:A:199:ASN:HD22	1.71	0.55
1:A:197:ARG:HG3	1:A:198:GLN:HG3	1.89	0.55
1:A:544:THR:CG2	1:A:549:ARG:N	2.70	0.54
1:A:565:VAL:HG12	1:A:566:LEU:N	2.23	0.54
1:A:377:PRO:O	1:A:379:ILE:N	2.40	0.54
1:A:214:ASN:ND2	1:A:214:ASN:C	2.58	0.54
1:A:214:ASN:O	1:A:216:ARG:N	2.41	0.54
1:A:67:THR:OG1	1:A:68:ARG:N	2.39	0.54
1:A:171:PRO:HG2	1:A:174:ASN:ND2	2.23	0.54
1:A:177:GLU:CG	1:A:178:THR:N	2.71	0.54
1:A:444:MET:HB2	1:A:539:GLN:OE1	2.08	0.54
1:A:497:ASN:O	1:A:500:PRO:HD3	2.08	0.53
1:A:122:ASP:OD1	1:A:528:THR:CG2	2.56	0.53
1:A:406:TRP:NE1	1:A:419:ILE:HG21	2.22	0.53
1:A:403:TYR:HD1	1:A:504:ILE:HG12	1.69	0.53
1:A:430:VAL:CG1	1:A:515:THR:HB	2.38	0.53
1:A:52:ARG:N	1:A:116:ARG:NH1	2.56	0.53
1:A:65:ASP:O	1:A:66:THR:HB	2.06	0.53
1:A:279:GLU:O	1:A:280:GLY:C	2.45	0.53
1:A:406:TRP:HE1	1:A:419:ILE:HG21	1.73	0.53

Continued on next page...

Continued from previous page...

Atom-1	Atom-2	Interatomic distance (Å)	Clash overlap (Å)
1:A:544:THR:HG22	1:A:545:ASP:H	1.74	0.53
1:A:126:ILE:HG12	1:A:523:LEU:HD23	1.91	0.53
1:A:223:THR:HG21	1:A:227:MET:SD	2.49	0.52
1:A:488:GLN:HE22	1:A:497:ASN:ND2	2.07	0.52
1:A:493:THR:HG23	2:B:15:TYR:CE1	2.45	0.52
1:A:151:ARG:HB3	1:A:201:VAL:N	2.24	0.52
1:A:457:ILE:HD12	1:A:458:SER:N	2.25	0.52
1:A:457:ILE:HA	1:A:460:PHE:CE2	2.45	0.52
1:A:394:ILE:HA	1:A:402:GLN:HE21	1.74	0.52
1:A:479:GLN:O	1:A:483:SER:HB3	2.07	0.52
1:A:57:TYR:OH	1:A:109:GLN:NE2	2.42	0.52
1:A:558:LEU:HD12	1:A:558:LEU:C	2.30	0.52
1:A:227:MET:HB2	1:A:228:PRO:HD3	1.92	0.52
1:A:420:ARG:O	1:A:420:ARG:HG2	2.10	0.52
1:A:378:VAL:C	1:A:380:LYS:N	2.62	0.51
1:A:243:LEU:HG	1:A:403:TYR:CE2	2.44	0.51
1:A:476:TYR:CD1	1:A:513:ILE:HD11	2.45	0.51
1:A:513:ILE:N	1:A:513:ILE:HD12	2.25	0.51
1:A:277:ASP:O	1:A:419:ILE:HD13	2.10	0.51
1:A:132:PRO:HA	1:A:175:TYR:CZ	2.45	0.51
1:A:237:HIS:CD2	1:A:425:LEU:HD11	2.46	0.51
1:A:487:ARG:NH1	1:A:507:ARG:HH22	2.07	0.51
1:A:231:TYR:HD1	1:A:503:GLN:HB3	1.75	0.51
1:A:178:THR:OG1	1:A:511:PRO:HD2	2.10	0.51
1:A:214:ASN:ND2	1:A:216:ARG:HB3	2.24	0.51
1:A:429:ASP:OD1	1:A:429:ASP:C	2.49	0.50
3:A:1014:C15:H7C1	3:A:2000:C15:H9C1	1.94	0.50
1:A:130:ASN:C	1:A:130:ASN:HD22	2.14	0.50
2:B:15:TYR:HD2	2:B:16:PRO:HD2	1.77	0.50
1:A:235:ALA:C	1:A:236:PHE:HD1	2.15	0.50
1:A:270:GLY:O	3:A:1014:C15:O1S	2.29	0.50
1:A:154:THR:CG2	1:A:155:LYS:HG3	2.41	0.50
1:A:544:THR:HG22	1:A:545:ASP:N	2.27	0.50
1:A:113:LEU:O	1:A:114:ASP:C	2.47	0.49
1:A:389:ARG:NH1	1:A:389:ARG:HG2	2.26	0.49
1:A:375:LYS:O	1:A:376:LYS:HG3	2.12	0.49
1:A:386:SER:O	1:A:388:LYS:N	2.45	0.49
1:A:394:ILE:HD11	1:A:398:SER:OG	2.13	0.49
1:A:98:ASN:C	1:A:98:ASN:ND2	2.66	0.49
1:A:493:THR:HG22	1:A:494:HIS:N	2.27	0.49
1:A:151:ARG:CB	1:A:201:VAL:H	2.25	0.49

Continued on next page...

Continued from previous page...

Atom-1	Atom-2	Interatomic distance (Å)	Clash overlap (Å)
1:A:292:TYR:HD1	1:A:378:VAL:HG12	1.75	0.49
1:A:68:ARG:NH1	1:A:68:ARG:CG	2.67	0.49
1:A:197:ARG:HG3	1:A:198:GLN:N	2.27	0.49
1:A:295:SER:CB	1:A:377:PRO:CG	2.90	0.49
1:A:545:ASP:OD1	1:A:549:ARG:HG2	2.12	0.49
1:A:497:ASN:ND2	1:A:500:PRO:HB3	2.28	0.49
1:A:503:GLN:HA	1:A:503:GLN:OE1	2.12	0.49
1:A:173:GLY:O	1:A:175:TYR:CE1	2.65	0.49
1:A:243:LEU:CD2	1:A:244:PRO:HD3	2.42	0.49
1:A:499:PHE:O	1:A:501:GLU:N	2.45	0.49
1:A:131:MET:HA	1:A:553:TYR:CD2	2.47	0.49
1:A:240:ILE:HD11	1:A:273:ILE:HG21	1.94	0.48
1:A:391:TYR:O	1:A:392:ASN:C	2.51	0.48
1:A:243:LEU:CG	1:A:403:TYR:HE2	2.25	0.48
1:A:179:MET:CE	1:A:487:ARG:NH2	2.77	0.48
1:A:520:VAL:CG2	1:A:521:PRO:HD2	2.43	0.48
1:A:201:VAL:O	1:A:201:VAL:HG13	2.12	0.48
1:A:424:LEU:HD23	1:A:425:LEU:H	1.76	0.48
1:A:130:ASN:HD22	1:A:130:ASN:N	2.10	0.48
1:A:249:ASP:C	1:A:249:ASP:OD1	2.51	0.48
1:A:145:ALA:HA	1:A:248:VAL:HA	1.96	0.48
1:A:244:PRO:HA	1:A:275:TYR:CD2	2.49	0.48
1:A:211:ASP:HA	1:A:508:PRO:CG	2.44	0.48
1:A:542:THR:HG22	1:A:542:THR:O	2.13	0.48
1:A:130:ASN:ND2	1:A:130:ASN:N	2.61	0.48
1:A:142:LYS:HD3	1:A:167:GLU:OE2	2.14	0.48
1:A:237:HIS:HD2	1:A:238:PRO:O	1.96	0.47
1:A:269:GLU:HG3	1:A:269:GLU:O	2.14	0.47
1:A:142:LYS:O	1:A:143:PHE:HB3	2.14	0.47
1:A:180:THR:HG21	1:A:258:LEU:CD2	2.44	0.47
1:A:239:ASP:HB3	1:A:407:TYR:HB2	1.96	0.47
1:A:74:ASN:O	1:A:75:LYS:C	2.52	0.47
1:A:179:MET:HE3	1:A:487:ARG:HH22	1.78	0.47
1:A:142:LYS:HG2	1:A:169:THR:HG22	1.97	0.47
1:A:456:GLN:O	1:A:458:SER:N	2.47	0.47
1:A:193:LEU:HD22	1:A:197:ARG:NH1	2.29	0.47
1:A:499:PHE:HD1	1:A:505:LEU:CB	2.25	0.47
1:A:476:TYR:HD1	1:A:513:ILE:HD11	1.80	0.47
1:A:277:ASP:O	1:A:279:GLU:N	2.46	0.47
1:A:131:MET:SD	1:A:138:MET:HG3	2.55	0.47
1:A:544:THR:HG22	1:A:549:ARG:H	1.79	0.47

Continued on next page...

Continued from previous page...

Atom-1	Atom-2	Interatomic distance (Å)	Clash overlap (Å)
1:A:75:LYS:O	1:A:78:ASP:OD1	2.32	0.47
1:A:493:THR:HG22	1:A:495:VAL:N	2.29	0.47
1:A:102:SER:O	1:A:103:PRO:C	2.52	0.46
1:A:215:PHE:CE1	1:A:241:ILE:HD11	2.49	0.46
1:A:544:THR:CG2	1:A:549:ARG:H	2.28	0.46
2:B:15:TYR:CD2	2:B:16:PRO:HD2	2.51	0.46
3:A:1014:C15:H9C1	3:A:2000:C15:C13	2.41	0.46
1:A:385:ASP:C	1:A:386:SER:O	2.52	0.46
1:A:463:VAL:HB	1:A:529:LEU:CD1	2.44	0.46
1:A:289:VAL:HG13	1:A:290:ASP:N	2.30	0.46
1:A:378:VAL:C	1:A:380:LYS:H	2.19	0.46
1:A:449:VAL:HG12	1:A:450:THR:HG23	1.97	0.46
1:A:242:LEU:HD22	1:A:247:GLY:HA2	1.98	0.46
1:A:78:ASP:HB2	1:A:82:LEU:HD12	1.97	0.46
1:A:250:PHE:O	1:A:252:HIS:N	2.49	0.46
1:A:454:THR:OG1	1:A:455:SER:N	2.49	0.46
1:A:295:SER:HB3	1:A:377:PRO:HG2	1.98	0.45
1:A:295:SER:CB	1:A:377:PRO:HG2	2.46	0.45
1:A:479:GLN:OE1	1:A:479:GLN:HA	2.16	0.45
1:A:243:LEU:HD21	1:A:403:TYR:CE2	2.51	0.45
1:A:487:ARG:CZ	1:A:507:ARG:HH22	2.29	0.45
1:A:225:LEU:CD2	1:A:399:THR:HB	2.47	0.45
1:A:436:GLN:NE2	1:A:438:TYR:CE2	2.81	0.45
1:A:504:ILE:C	1:A:506:ALA:H	2.20	0.45
1:A:123:LEU:HD13	1:A:561:VAL:HG22	1.98	0.45
1:A:177:GLU:CG	1:A:178:THR:H	2.30	0.45
1:A:476:TYR:CD1	1:A:513:ILE:CD1	3.00	0.45
1:A:132:PRO:CA	1:A:175:TYR:OH	2.53	0.44
1:A:378:VAL:O	1:A:379:ILE:C	2.55	0.44
1:A:87:ASP:O	1:A:89:SER:N	2.46	0.44
1:A:171:PRO:O	1:A:172:GLU:O	2.35	0.44
1:A:202:LEU:HD23	1:A:202:LEU:N	2.33	0.44
1:A:231:TYR:H	1:A:503:GLN:HE21	1.65	0.44
2:B:10:THR:CG2	2:B:10:THR:O	2.60	0.44
1:A:231:TYR:CD1	1:A:503:GLN:HB3	2.51	0.44
1:A:131:MET:HA	1:A:132:PRO:HD3	1.80	0.44
1:A:272:ARG:HH12	3:A:2000:C15:H1C1	1.83	0.44
1:A:460:PHE:O	1:A:548:ARG:NH2	2.50	0.44
1:A:448:PRO:HG2	1:A:462:VAL:O	2.17	0.44
1:A:387:LYS:HZ2	2:B:16:PRO:HB3	1.82	0.44
1:A:244:PRO:HA	1:A:275:TYR:CE2	2.53	0.44

Continued on next page...

Continued from previous page...

Atom-1	Atom-2	Interatomic distance (Å)	Clash overlap (Å)
1:A:394:ILE:HG13	1:A:395:SER:N	2.32	0.44
1:A:237:HIS:HE1	1:A:426:CYS:O	2.00	0.44
1:A:547:ARG:O	1:A:548:ARG:HB2	2.16	0.44
1:A:493:THR:HG23	2:B:15:TYR:CZ	2.52	0.44
3:A:1014:C15:H102	3:A:2000:C15:H9C1	2.00	0.44
1:A:189:VAL:O	1:A:192:TYR:N	2.51	0.44
1:A:441:LEU:N	1:A:442:PRO:CD	2.79	0.44
1:A:207:GLY:HA3	1:A:246:CYS:SG	2.58	0.44
1:A:113:LEU:HB3	1:A:119:TRP:CE2	2.53	0.44
1:A:135:ASN:C	1:A:135:ASN:OD1	2.55	0.44
1:A:383:THR:HG22	1:A:384:GLU:HG3	1.99	0.44
1:A:69:VAL:HG22	1:A:561:VAL:HB	2.00	0.44
1:A:430:VAL:HG13	1:A:515:THR:HB	2.00	0.43
1:A:64:PHE:O	1:A:65:ASP:HB2	2.17	0.43
1:A:384:GLU:HA	1:A:389:ARG:O	2.17	0.43
1:A:508:PRO:HA	1:A:509:PRO:HD3	1.81	0.43
1:A:69:VAL:HG23	1:A:69:VAL:O	2.18	0.43
1:A:207:GLY:O	1:A:208:VAL:CB	2.64	0.43
1:A:383:THR:O	1:A:383:THR:CG2	2.65	0.43
1:A:83:ASN:CA	1:A:86:ASN:HD22	2.21	0.43
1:A:566:LEU:O	1:A:567:SER:HB3	2.19	0.43
1:A:223:THR:HG22	1:A:225:LEU:HB2	1.99	0.43
1:A:181:ILE:O	1:A:184:MET:HB2	2.19	0.43
1:A:192:TYR:CD1	1:A:196:GLY:HA3	2.54	0.43
1:A:499:PHE:CD1	1:A:505:LEU:HB3	2.44	0.43
1:A:75:LYS:HE2	1:A:75:LYS:HB3	1.88	0.43
3:A:1014:C15:H102	3:A:2000:C15:C9	2.49	0.43
1:A:177:GLU:HG3	1:A:178:THR:H	1.82	0.43
1:A:179:MET:HE3	1:A:487:ARG:NH2	2.34	0.42
1:A:544:THR:HG23	1:A:549:ARG:N	2.34	0.42
1:A:223:THR:CG2	1:A:225:LEU:HB2	2.49	0.42
1:A:132:PRO:CD	1:A:553:TYR:CE2	3.02	0.42
1:A:95:VAL:HG12	1:A:95:VAL:O	2.19	0.42
1:A:117:SER:HA	1:A:568:SER:HA	2.02	0.42
1:A:243:LEU:HD23	1:A:244:PRO:HD3	2.01	0.42
1:A:481:VAL:O	1:A:481:VAL:CG1	2.66	0.42
1:A:424:LEU:CD2	1:A:425:LEU:N	2.80	0.42
1:A:58:SER:OG	1:A:59:GLU:N	2.52	0.42
1:A:87:ASP:OD1	1:A:89:SER:HB3	2.19	0.42
1:A:243:LEU:CG	1:A:403:TYR:CE2	3.03	0.42
1:A:282:ASN:HA	1:A:404:ARG:HA	2.02	0.42

Continued on next page...

Continued from previous page...

Atom-1	Atom-2	Interatomic distance (Å)	Clash overlap (Å)
1:A:126:ILE:HG12	1:A:523:LEU:CD2	2.49	0.42
1:A:73:ASP:OD1	1:A:73:ASP:N	2.53	0.41
1:A:224:GLY:O	1:A:399:THR:HB	2.20	0.41
2:B:15:TYR:C	2:B:15:TYR:CD2	2.92	0.41
1:A:137:PHE:HE1	1:A:549:ARG:NE	2.18	0.41
3:A:1014:C15:H111	3:A:2000:C15:H141	2.01	0.41
2:B:12:ASN:HA	2:B:13:PRO:HD3	1.90	0.41
1:A:208:VAL:HG22	1:A:242:LEU:HD22	2.03	0.41
1:A:443:ASP:HB2	1:A:539:GLN:OE1	2.21	0.41
1:A:171:PRO:O	1:A:172:GLU:C	2.59	0.41
1:A:179:MET:HE2	1:A:487:ARG:NH2	2.35	0.41
1:A:154:THR:CG2	1:A:155:LYS:H	2.34	0.41
1:A:403:TYR:CE1	1:A:504:ILE:HG12	2.56	0.41
1:A:114:ASP:OD2	1:A:116:ARG:NH1	2.54	0.41
1:A:544:THR:HG21	1:A:548:ARG:HD2	2.02	0.41
1:A:551:CYS:HA	1:A:552:PRO:HD3	1.89	0.41
1:A:132:PRO:HA	1:A:175:TYR:HH	1.79	0.41
1:A:83:ASN:OD1	1:A:92:LEU:N	2.38	0.41
3:A:1014:C15:H2C1	3:A:1014:C15:H161	1.72	0.41
1:A:196:GLY:O	1:A:201:VAL:HG12	2.21	0.40
1:A:565:VAL:CG1	1:A:566:LEU:N	2.84	0.40
2:B:18:ASP:O	2:B:19:THR:HB	2.21	0.40
1:A:375:LYS:O	1:A:376:LYS:CG	2.70	0.40
1:A:441:LEU:O	1:A:443:ASP:N	2.54	0.40
1:A:53:ASN:O	1:A:53:ASN:ND2	2.55	0.40
1:A:150:SER:OG	1:A:162:LYS:HB2	2.21	0.40
1:A:283:ILE:HG22	1:A:284:PRO:O	2.22	0.40
1:A:483:SER:O	1:A:484:GLN:C	2.59	0.40

There are no symmetry-related clashes.

5.3 Torsion angles ⓘ

5.3.1 Protein backbone ⓘ

In the following table, the Percentiles column shows the percent Ramachandran outliers of the chain as a percentile score with respect to all X-ray entries followed by that with respect to entries of similar resolution.

The Analysed column shows the number of residues for which the backbone conformation was analysed, and the total number of residues.

Mol	Chain	Analysed	Favoured	Allowed	Outliers	Percentiles	
1	A	436/523 (83%)	321 (74%)	69 (16%)	46 (11%)	0	6
2	B	8/21 (38%)	5 (62%)	3 (38%)	0	100	100
All	All	444/544 (82%)	326 (73%)	72 (16%)	46 (10%)	0	7

All (46) Ramachandran outliers are listed below:

Mol	Chain	Res	Type
1	A	82	LEU
1	A	130	ASN
1	A	172	GLU
1	A	174	ASN
1	A	201	VAL
1	A	216	ARG
1	A	280	GLY
1	A	378	VAL
1	A	449	VAL
1	A	457	ILE
1	A	469	PRO
1	A	481	VAL
1	A	498	ARG
1	A	58	SER
1	A	84	TYR
1	A	175	TYR
1	A	196	GLY
1	A	215	PHE
1	A	219	PHE
1	A	251	THR
1	A	279	GLU
1	A	379	ILE
1	A	387	LYS
1	A	388	LYS
1	A	428	PRO
1	A	442	PRO
1	A	505	LEU
1	A	75	LYS
1	A	81	SER
1	A	88	HIS
1	A	89	SER
1	A	101	TYR
1	A	114	ASP
1	A	176	SER
1	A	199	ASN

Continued on next page...

Continued from previous page...

Mol	Chain	Res	Type
1	A	233	ASN
1	A	270	GLY
1	A	500	PRO
1	A	513	ILE
1	A	55	ILE
1	A	67	THR
1	A	208	VAL
1	A	382	LEU
1	A	392	ASN
1	A	381	PRO
1	A	418	GLY

5.3.2 Protein sidechains ⓘ

In the following table, the Percentiles column shows the percent sidechain outliers of the chain as a percentile score with respect to all X-ray entries followed by that with respect to entries of similar resolution.

The Analysed column shows the number of residues for which the sidechain conformation was analysed, and the total number of residues.

Mol	Chain	Analysed	Rotameric	Outliers	Percentiles	
1	A	399/451 (88%)	369 (92%)	30 (8%)	15	47
2	B	10/20 (50%)	9 (90%)	1 (10%)	8	34
All	All	409/471 (87%)	378 (92%)	31 (8%)	14	47

All (31) residues with a non-rotameric sidechain are listed below:

Mol	Chain	Res	Type
1	A	83	ASN
1	A	98	ASN
1	A	107	SER
1	A	124	LYS
1	A	130	ASN
1	A	133	ASN
1	A	168	PHE
1	A	199	ASN
1	A	202	LEU
1	A	214	ASN
1	A	249	ASP
1	A	256	SER

Continued on next page...

Continued from previous page...

Mol	Chain	Res	Type
1	A	271	PHE
1	A	276	ASP
1	A	279	GLU
1	A	401	THR
1	A	404	ARG
1	A	411	ASN
1	A	419	ILE
1	A	424	LEU
1	A	429	ASP
1	A	436	GLN
1	A	440	SER
1	A	450	THR
1	A	459	ASN
1	A	478	ASP
1	A	484	GLN
1	A	512	THR
1	A	545	ASP
1	A	562	SER
2	B	15	TYR

Some sidechains can be flipped to improve hydrogen bonding and reduce clashes. All (17) such sidechains are listed below:

Mol	Chain	Res	Type
1	A	53	ASN
1	A	74	ASN
1	A	86	ASN
1	A	98	ASN
1	A	109	GLN
1	A	130	ASN
1	A	174	ASN
1	A	198	GLN
1	A	199	ASN
1	A	214	ASN
1	A	237	HIS
1	A	402	GLN
1	A	436	GLN
1	A	459	ASN
1	A	471	HIS
1	A	497	ASN
1	A	503	GLN

5.3.3 RNA ⓘ

There are no RNA molecules in this entry.

5.4 Non-standard residues in protein, DNA, RNA chains ⓘ

There are no non-standard protein/DNA/RNA residues in this entry.

5.5 Carbohydrates ⓘ

There are no carbohydrates in this entry.

5.6 Ligand geometry ⓘ

2 ligands are modelled in this entry.

In the following table, the Counts columns list the number of bonds (or angles) for which Mogul statistics could be retrieved, the number of bonds (or angles) that are observed in the model and the number of bonds (or angles) that are defined in the Chemical Component Dictionary. The Link column lists molecule types, if any, to which the group is linked. The Z score for a bond length (or angle) is the number of standard deviations the observed value is removed from the expected value. A bond length (or angle) with $|Z| > 2$ is considered an outlier worth inspection. RMSZ is the root-mean-square of all Z scores of the bond lengths (or angles).

Mol	Type	Chain	Res	Link	Bond lengths			Bond angles		
					Counts	RMSZ	$\# Z > 2$	Counts	RMSZ	$\# Z > 2$
3	C15	A	1014	-	19,19,21	2.46	4 (21%)	20,21,26	1.85	5 (25%)
3	C15	A	2000	-	19,19,21	2.57	5 (26%)	20,21,26	2.19	6 (30%)

In the following table, the Chirals column lists the number of chiral outliers, the number of chiral centers analysed, the number of these observed in the model and the number defined in the Chemical Component Dictionary. Similar counts are reported in the Torsion and Rings columns. '-' means no outliers of that kind were identified.

Mol	Type	Chain	Res	Link	Chirals	Torsions	Rings
3	C15	A	1014	-	-	0/17/17/21	0/0/0/0
3	C15	A	2000	-	-	0/17/17/21	0/0/0/0

All (9) bond length outliers are listed below:

Mol	Chain	Res	Type	Atoms	Z	Observed(Å)	Ideal(Å)
3	A	2000	C15	C15-C16	2.14	1.60	1.51

Continued on next page...

Continued from previous page...

Mol	Chain	Res	Type	Atoms	Z	Observed(Å)	Ideal(Å)
3	A	1014	C15	C12-C11	2.25	1.64	1.51
3	A	2000	C15	C14-C13	2.33	1.64	1.51
3	A	2000	C15	C15-C14	2.60	1.66	1.51
3	A	1014	C15	C10-C9	2.66	1.66	1.51
3	A	1014	C15	C1-S1	4.57	1.84	1.77
3	A	2000	C15	C1-S1	5.12	1.84	1.77
3	A	1014	C15	O3S-S1	8.00	1.75	1.47
3	A	2000	C15	O3S-S1	8.51	1.77	1.47

All (11) bond angle outliers are listed below:

Mol	Chain	Res	Type	Atoms	Z	Observed(°)	Ideal(°)
3	A	2000	C15	O3S-S1-O1S	-2.88	104.23	111.27
3	A	1014	C15	O3S-S1-O1S	-2.44	105.30	111.27
3	A	2000	C15	O2S-S1-O1S	-2.36	105.77	113.95
3	A	2000	C15	C9-C8-C7	-2.06	103.23	114.41
3	A	1014	C15	O2S-S1-O1S	-2.01	106.98	113.95
3	A	1014	C15	C14-C13-C12	2.02	125.39	114.41
3	A	2000	C15	O3S-S1-C1	3.36	111.21	105.77
3	A	2000	C15	C15-C16-N1	3.53	120.92	112.08
3	A	1014	C15	O3S-S1-C1	3.62	111.62	105.77
3	A	1014	C15	O2S-S1-C1	5.67	113.75	106.92
3	A	2000	C15	O2S-S1-C1	6.30	114.51	106.92

There are no chirality outliers.

There are no torsion outliers.

There are no ring outliers.

2 monomers are involved in 13 short contacts:

Mol	Chain	Res	Type	Clashes	Symm-Clashes
3	A	1014	C15	10	0
3	A	2000	C15	11	0

5.7 Other polymers ⓘ

There are no such residues in this entry.

5.8 Polymer linkage issues ⓘ

There are no chain breaks in this entry.

6 Fit of model and data [i](#)

6.1 Protein, DNA and RNA chains [i](#)

In the following table, the column labelled ‘#RSRZ> 2’ contains the number (and percentage) of RSRZ outliers, followed by percent RSRZ outliers for the chain as percentile scores relative to all X-ray entries and entries of similar resolution. The OWAB column contains the minimum, median, 95th percentile and maximum values of the occupancy-weighted average B-factor per residue. The column labelled ‘Q< 0.9’ lists the number of (and percentage) of residues with an average occupancy less than 0.9.

Mol	Chain	Analysed	<RSRZ>	#RSRZ>2	OWAB(Å ²)	Q<0.9
1	A	440/523 (84%)	-0.39	3 (0%) 87 83	50, 74, 113, 130	0
2	B	10/21 (47%)	0.40	0 100 100	104, 109, 126, 129	0
All	All	450/544 (82%)	-0.37	3 (0%) 87 83	50, 74, 114, 130	0

All (3) RSRZ outliers are listed below:

Mol	Chain	Res	Type	RSRZ
1	A	296	LEU	3.0
1	A	156	ASP	2.3
1	A	482	TYR	2.3

6.2 Non-standard residues in protein, DNA, RNA chains [i](#)

There are no non-standard protein/DNA/RNA residues in this entry.

6.3 Carbohydrates [i](#)

There are no carbohydrates in this entry.

6.4 Ligands [i](#)

In the following table, the Atoms column lists the number of modelled atoms in the group and the number defined in the chemical component dictionary. The B-factors column lists the minimum, median, 95th percentile and maximum values of B factors of atoms in the group. The column labelled ‘Q< 0.9’ lists the number of atoms with occupancy less than 0.9.

Mol	Type	Chain	Res	Atoms	RSCC	RSR	B-factors(Å ²)	Q<0.9
3	C15	A	2000	20/22	0.38	0.71	127,133,139,139	0
3	C15	A	1014	20/22	0.78	0.55	107,120,124,125	0

6.5 Other polymers [i](#)

There are no such residues in this entry.